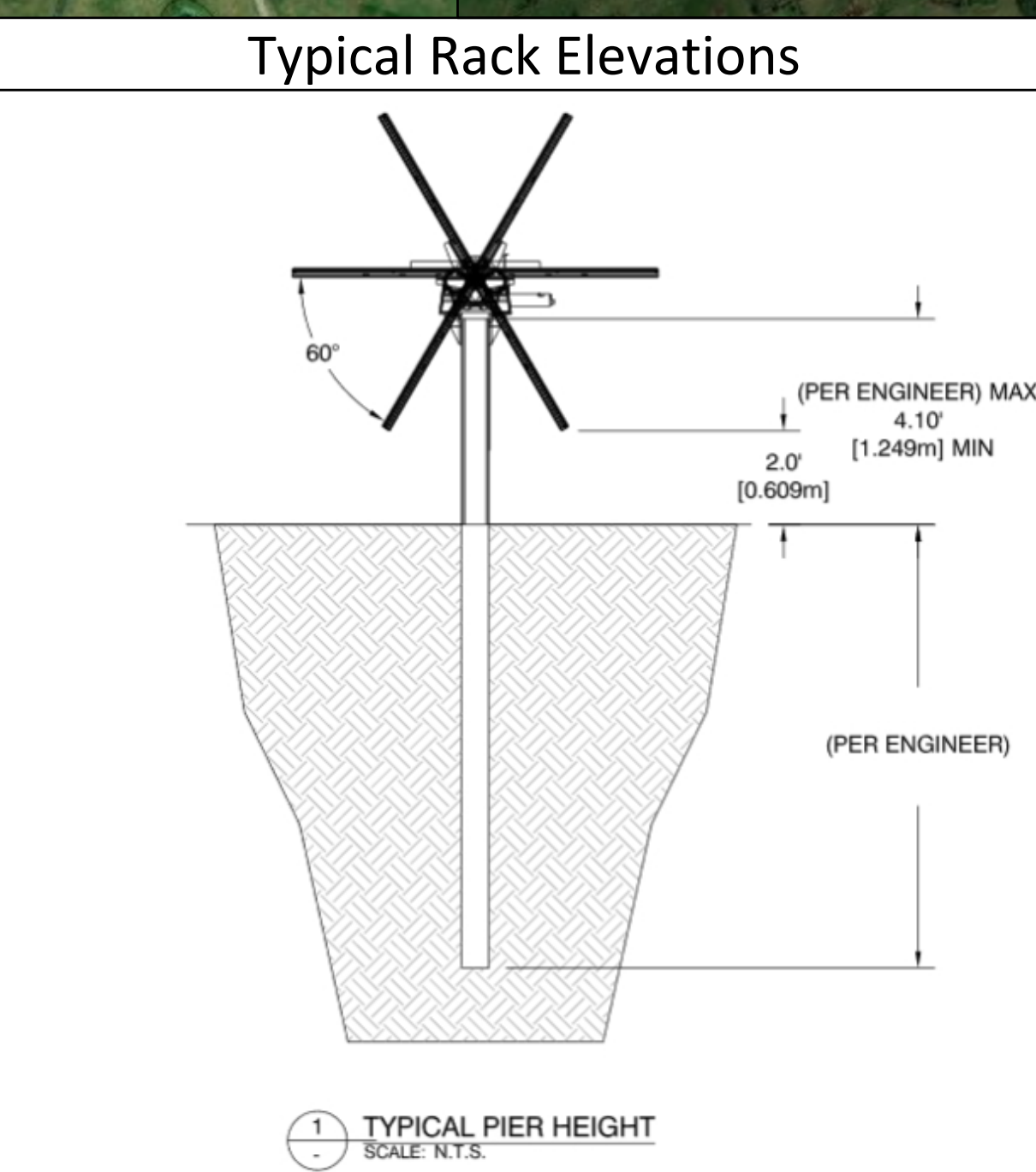


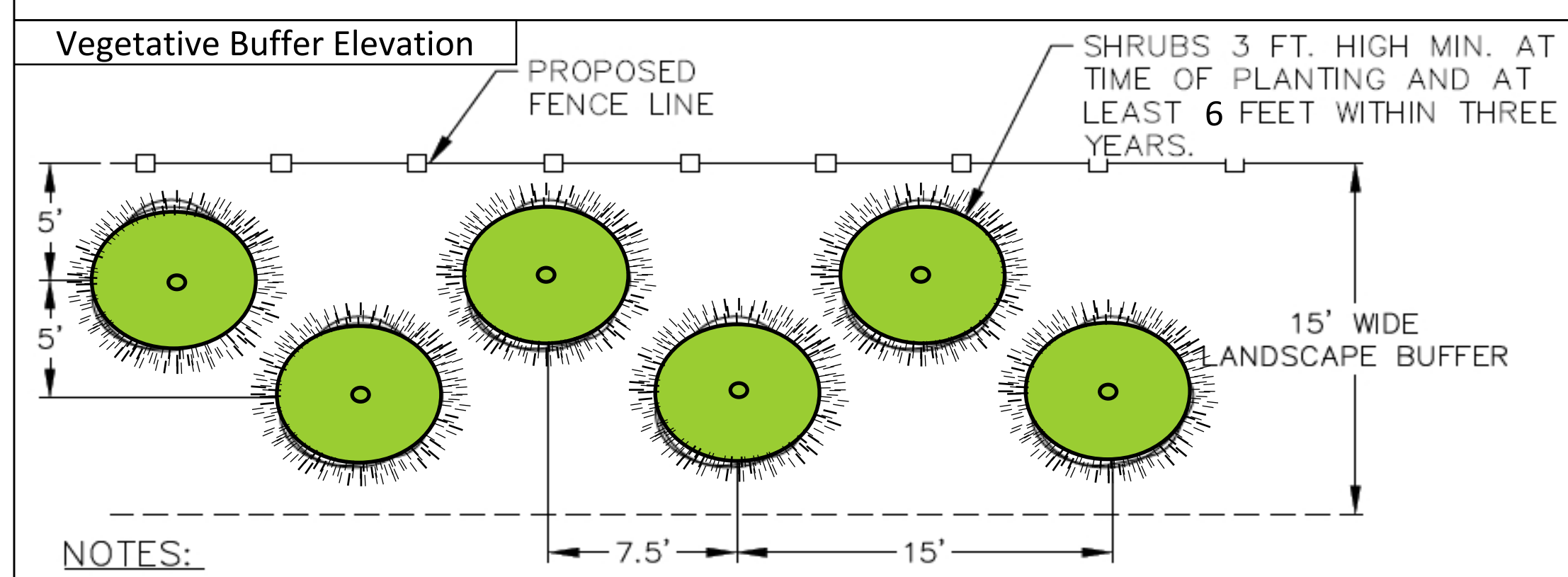
Solar panel, equipment and road locations are indicative and may be adjusted within the shaded areas shown within the Project Footprint

Drawing Legend	
	Potential Project Footprint
	Wetland Features
	Utility Easement
	Water Features
	Array Area
	Parcel Boundary
	Fence Boundary
	Access Roads
	Vegetative Buffer



Standard Notes

- (1) The Purpose of this plan is for a Power Generation Permit for review and approval by the Kentucky State Siting Board to construct a solar energy system. All information shown is for planning purposes only.
- (2) The property lines, existing improvements, and topographic data shown hereon are not based on a field survey and have been completed from ArcGIS & Google Earth Imagry. No field evidence of property markers were located with this Exhibit.
- (3) Wetlands and Streams are shown representative of a delineation received by Carolina Solar Energy.
- (4) Project area will be cleared and grubbed as necessary, retaining pre-development drainage patterns as much as possible. Minor grading will occur around inverter areas to divert surface drainage. Areas subject to rutting during construction will be temporarily stabilized with gravel that will remain after construction. Soil conditions and equipment loads will determine final design.
- (5) Proposed construction and temporary laydown yard/construction staging area to be used during site construction. A portion of this area will be covered with gravel to allow delivery of construction materials. Prior to construction, this area will be compacted by a smooth drum or sheepsfoot roller to reduce/prevent rutting. Following construction gravel laydown yard will be removed.
- (6) Access aisles shown on this plan indicate construction and maintenance access points for ingress/egress. Prior to construction, these aisles are compacted by a smooth drum or sheepsfoot roller to reduce/prevent rutting. Gravel may be placed in high traffic or poorly draining areas during construction activities to improve access. Soil access aisle will be scarified, aerated, and re-seeded after construction. Access aisles to inverters may require gravel to support delivery equipment loads. Soil conditions and final equipment selection will determine if gravel access aisles will be required to inverter locations
- (7) All Right-Of-Ways are public unless noted otherwise.
- (8) Utility lines and services shown hereon are approximate per aerial photography or as reported by various responsible parties. Location of underground utilities are not shown. Call appropriate authorities before digging.
- (9) No lighting is proposed for the array area. The Interconnection Substation will have some lighting.
- (10) 6' tall chain link fence with three strands of barbed wire or similar to meet National Electric Code requirements. The proposed access gate will be will be locked with a standard keyed or combination lock. Emergency personnel will be provided a key or combination for access.



Carolina Solar Energy
 400 W Main St
 Durham, NC 27701
 Suite 503

Turkey Creek Farm
 50 MWAC

ISSUE
 11.25.19
 12.04.19
 12.08.19

PROJECT
 Turkey Creek

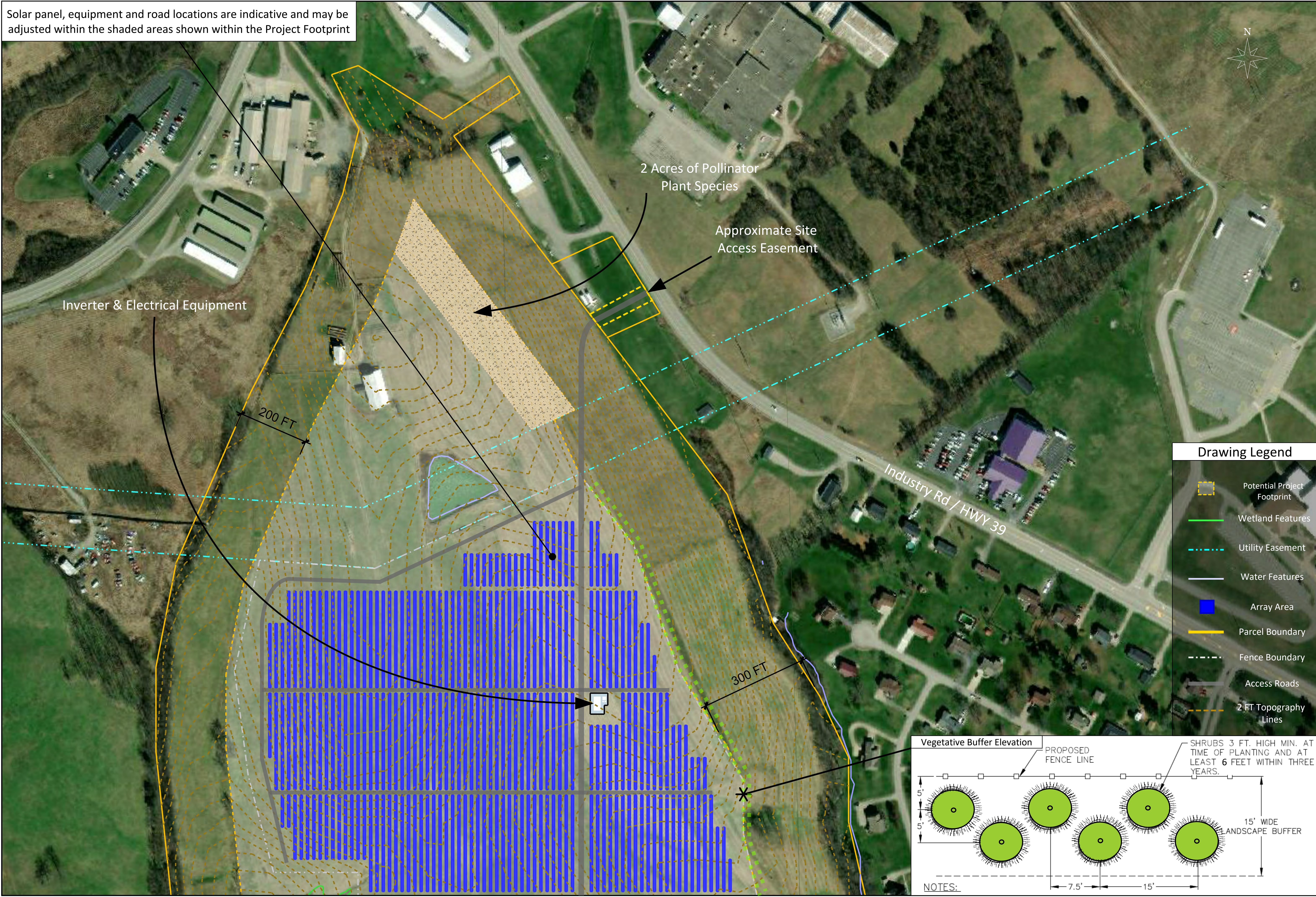
DRAWN BY
 CJ

DESCRIPTION
 Array Layout

a

01

Solar panel, equipment and road locations are indicative and may be adjusted within the shaded areas shown within the Project Footprint



Drawing Legend

- Potential Project Footprint
- Wetland Features
- Utility Easement
- Water Features
- Array Area
- Parcel Boundary
- Fence Boundary
- Access Roads
- 2 FT Topography Lines

Carolina Solar Energy
 400 W Main St
 Durham, NC 27701
 Suite 503

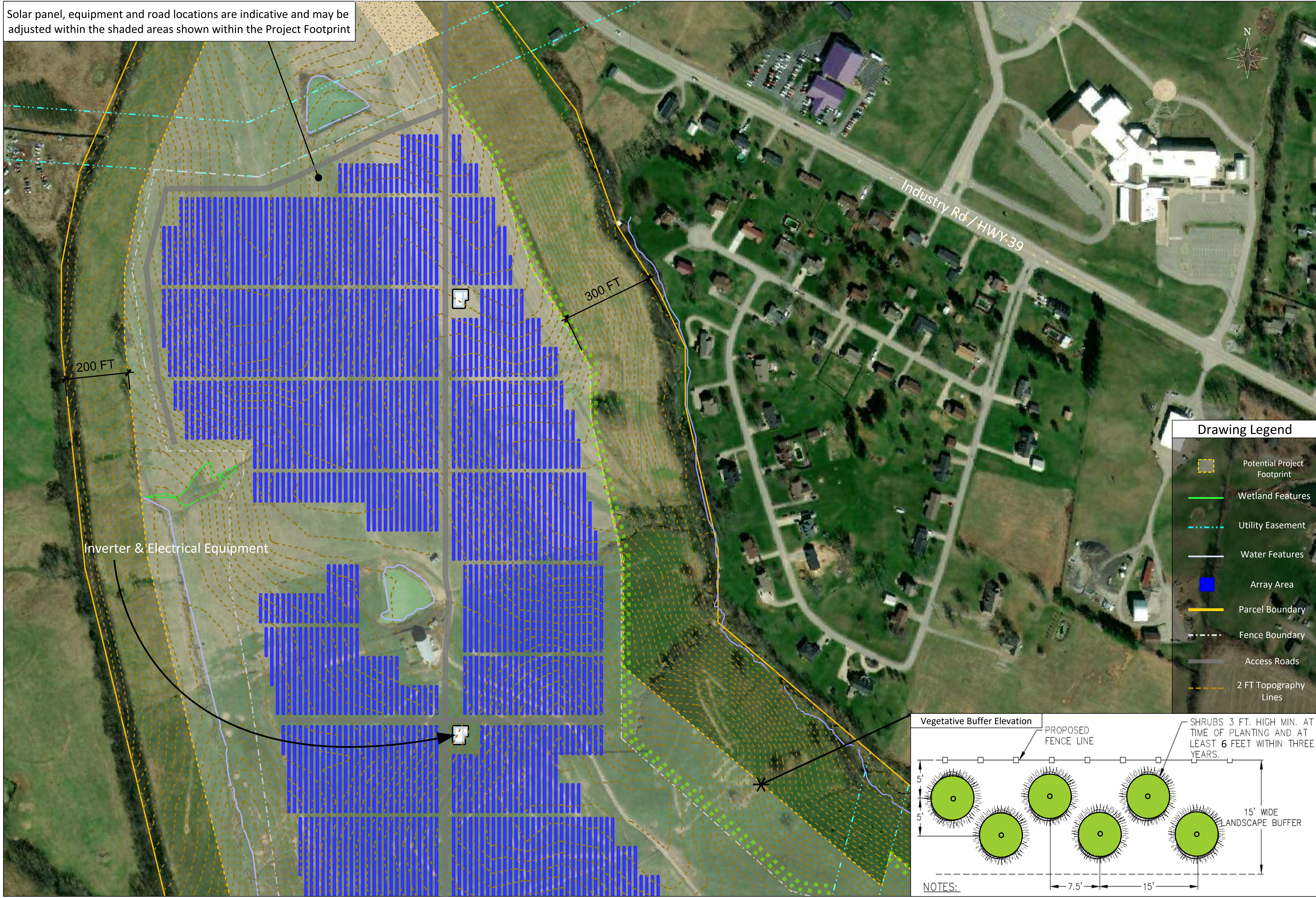
Turkey Creek Farm
 50 MWAC

ISSUE
 11.25.19
 12.04.19
 12.08.19

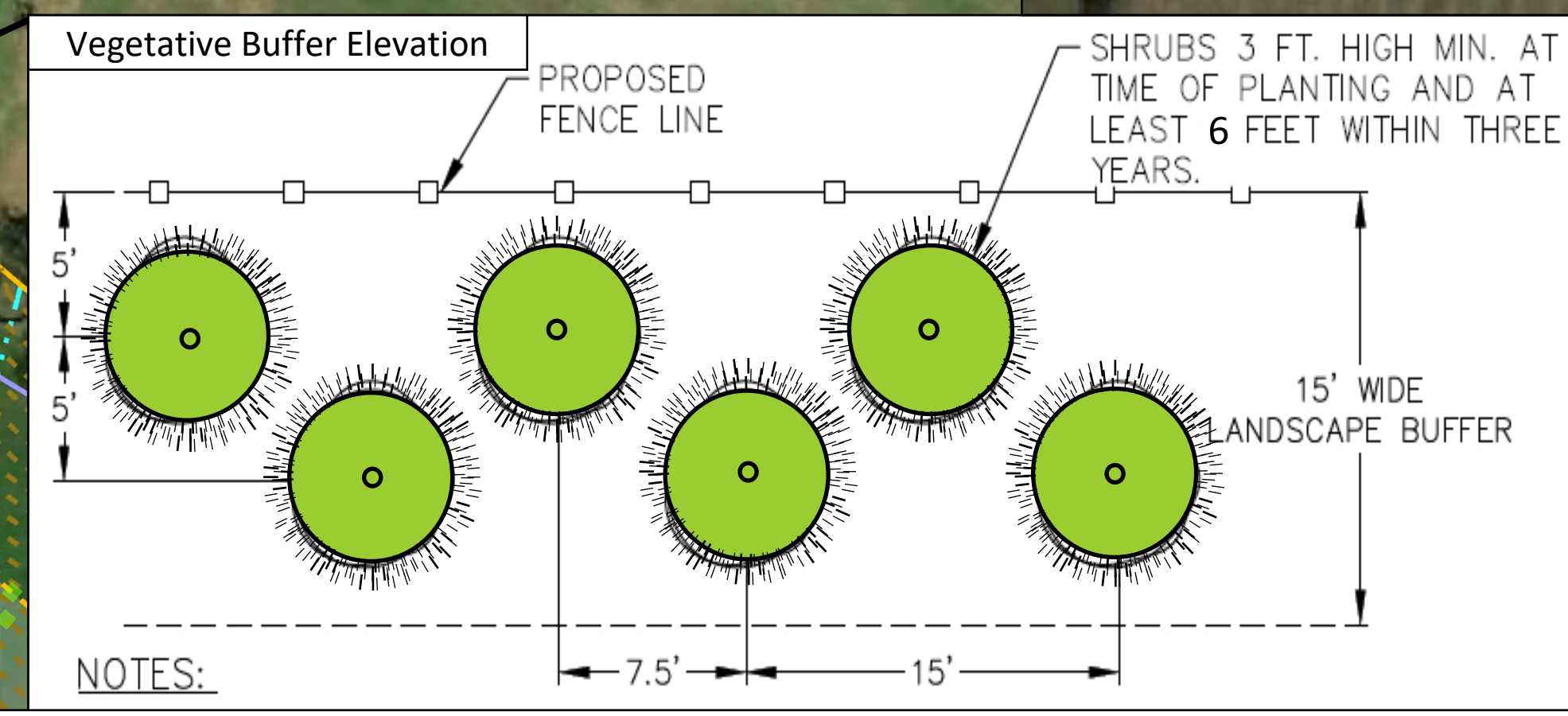
PROJECT
 Turkey Creek

DRAWN BY
 CJ

Solar panel, equipment and road locations are indicative and may be adjusted within the shaded areas shown within the Project Footprint



Drawing Legend	
	Potential Project Footprint
	Wetland Features
	Utility Easement
	Water Features
	Array Area
	Parcel Boundary
	Fence Boundary
	Access Roads
	2 FT Topography Lines



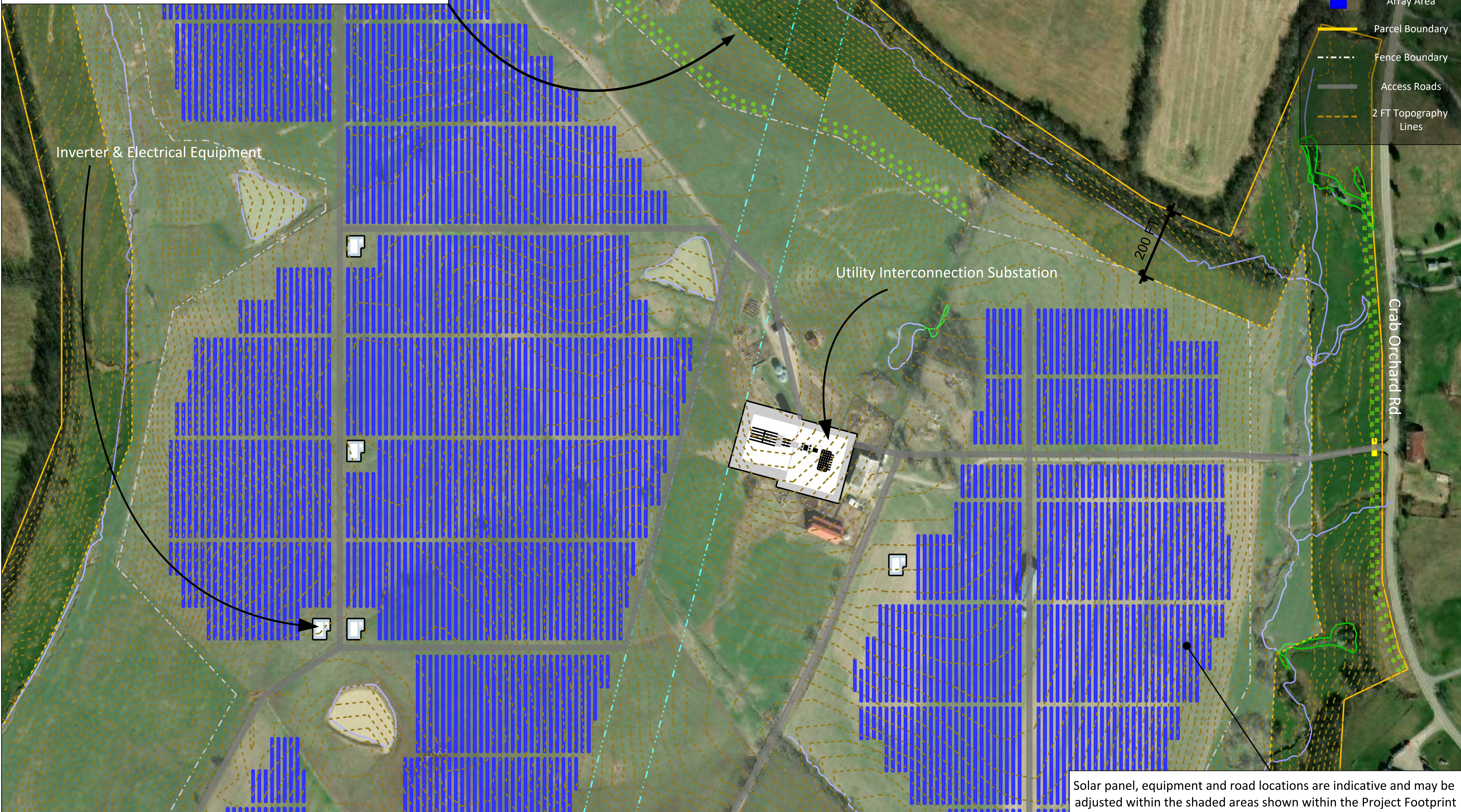
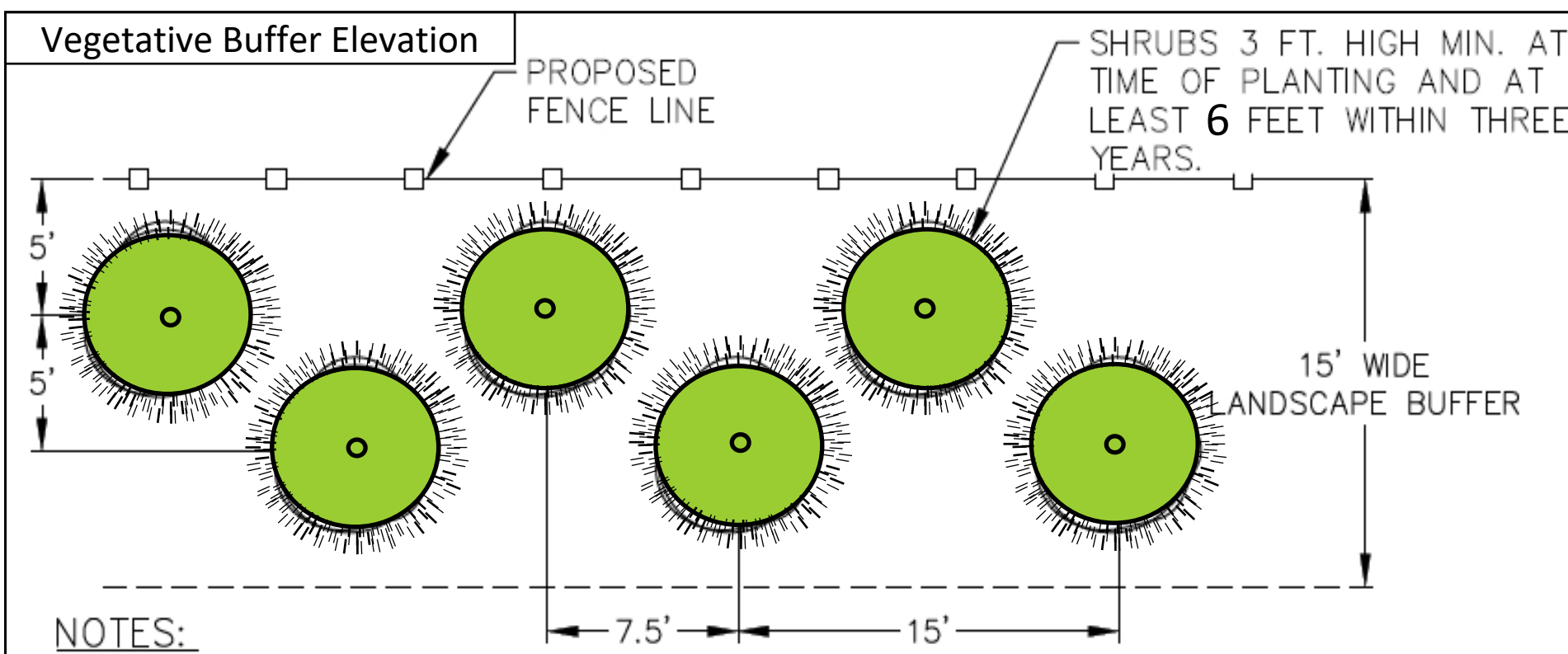
Carolina Solar Energy
400 W Main St
Durham, NC 27701
Suite 503

Turkey Creek Farm
50 MWAC

ISSUE
11.25.19
12.04.19
12.08.19

PROJECT
Turkey Creek

DRAWN BY
CJ



Drawing Legend

- Potential Project Footprint
- Wetland Features
- Utility Easement
- Water Features
- Array Area
- Parcel Boundary
- Fence Boundary
- Access Roads
- 2 FT Topography Lines

CAROLINA SOLAR ENERGY

Carolina Solar Energy
400 W Main St
Durham, NC 27701
Suite 503

Turkey Creek Farm
50 MWAC

ISSUE
11.25.19
12.04.19
12.08.19

PROJECT
Turkey Creek

DRAWN BY
CJ

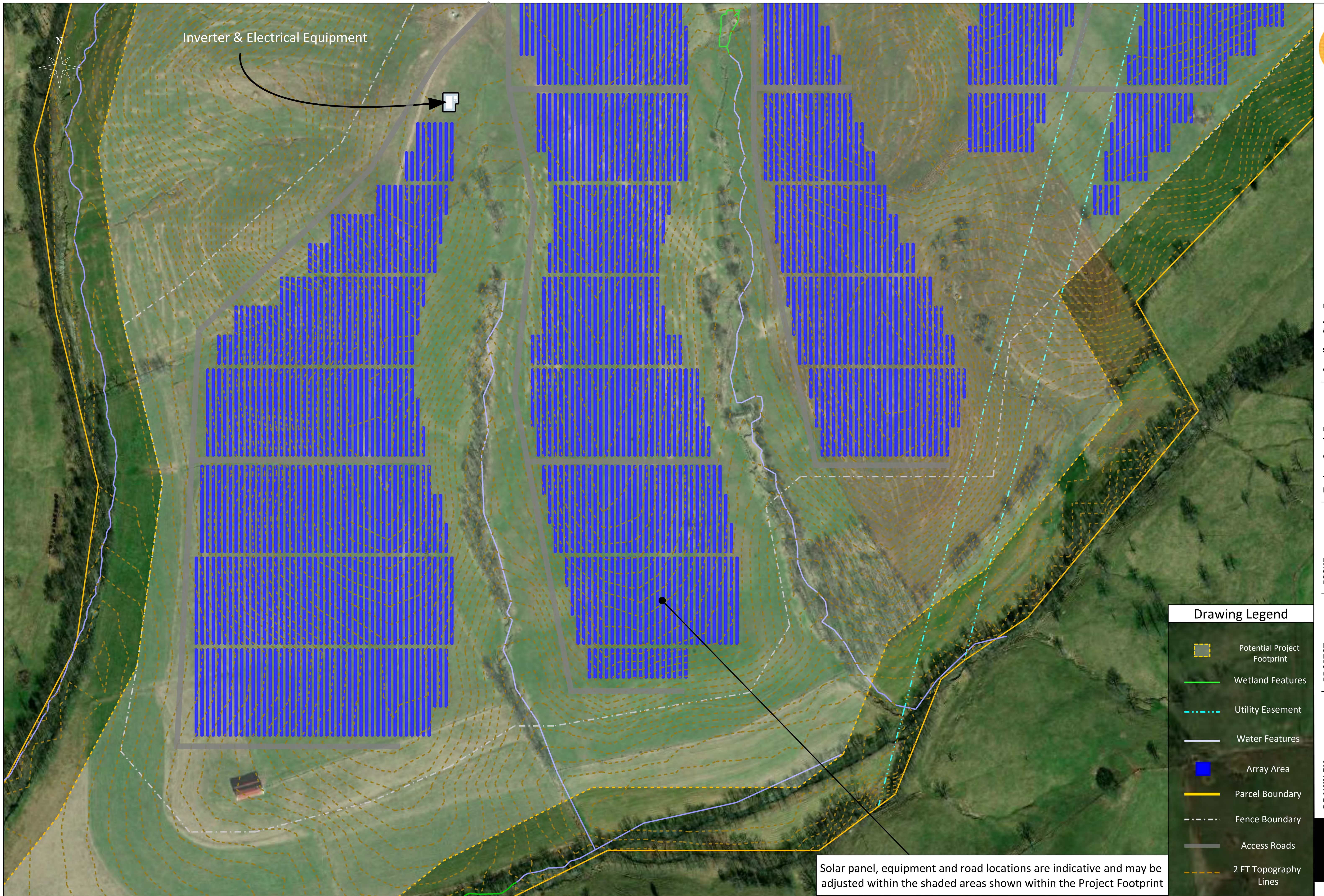
Solar panel, equipment and road locations are indicative and may be adjusted within the shaded areas shown within the Project Footprint



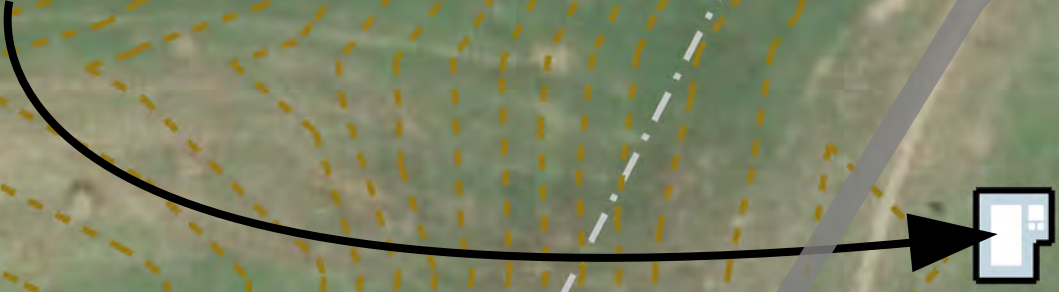
Inverter & Electrical Equipment

Drawing Legend	
	Potential Project Footprint
	Wetland Features
	Utility Easement
	Water Features
	Array Area
	Parcel Boundary
	Fence Boundary
	Access Roads
	2 FT Topography Lines

Solar panel, equipment and road locations are indicative and may be adjusted within the shaded areas shown within the Project Footprint



Inverter & Electrical Equipment



Drawing Legend	
	Potential Project Footprint
	Wetland Features
	Utility Easement
	Water Features
	Array Area
	Parcel Boundary
	Fence Boundary
	Access Roads
	2 FT Topography Lines

Solar panel, equipment and road locations are indicative and may be adjusted within the shaded areas shown within the Project Footprint



Carolina Solar Energy
400 W Main St
Durham, NC 27701
Suite 503

Turkey Creek Farm
50 MWAC

ISSUE
11.25.19
12.04.19
12.08.19

PROJECT
Turkey Creek

DRAWN BY
CJ