

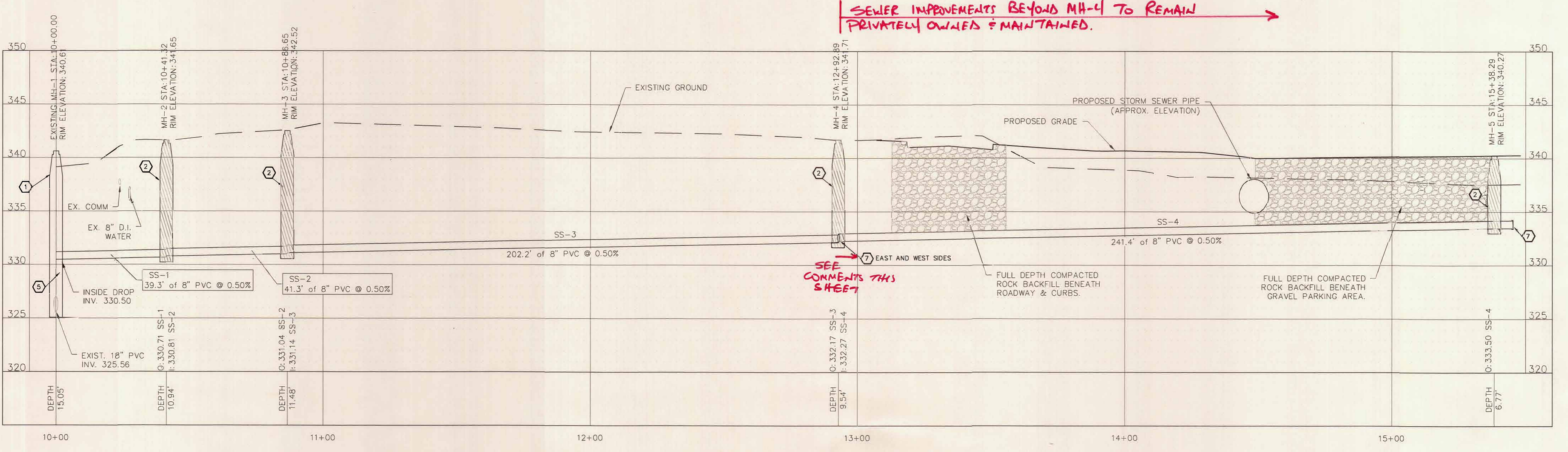
SEE COMMENT THIS SHEET

TO BE LOCATED SO IT CAN ADEQUATELY SERVE THE NEXT BLDG.

**MOVE MANHOLE TO APPROX. STA 13+00 SO IT IS WITHIN THE PROPOSED EASEMENT IN CASE OF FUTURE EXTENSION TO THE EAST.*

FUTURE GAS STATION/ CONVENIENCE STORE

**THIS SERVICE TO BE LOCATED ON THE LOT USED FOR FUTURE GAS/CONV STORE*



SEWER IMPROVEMENTS BEYOND MH-4 TO REMAIN PRIVATELY OWNED & MAINTAINED.

SEE COMMENTS THIS SHEET



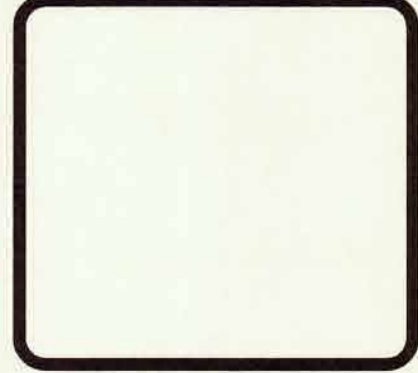
PROJECT NO. 19231	DATE: APRIL 2020
DRAWN BY: DRC	CHECKED BY: BG
REV.	DESCRIPTION

BACON | FARMER | WORKMAN
ENGINEERING & TESTING, INC.
500 W. MARKET STREET, SUITE 100
PADUCAH, KY 40301
PHONE: 270-443-1885 FAX: 270-443-1887
902 LAMAR BLVD., SUITE 2
PADUCAH, KY 40301
PHONE: 270-335-4882 FAX: 270-335-4883



SANITARY SEWER PLAN & PROFILE
US HIGHWAY 60
PADUCAH, McCRACKEN COUNTY, KENTUCKY
JACKSON PURCHASE ENERGY CORPORATION FACILITY

SHEET
SS-1



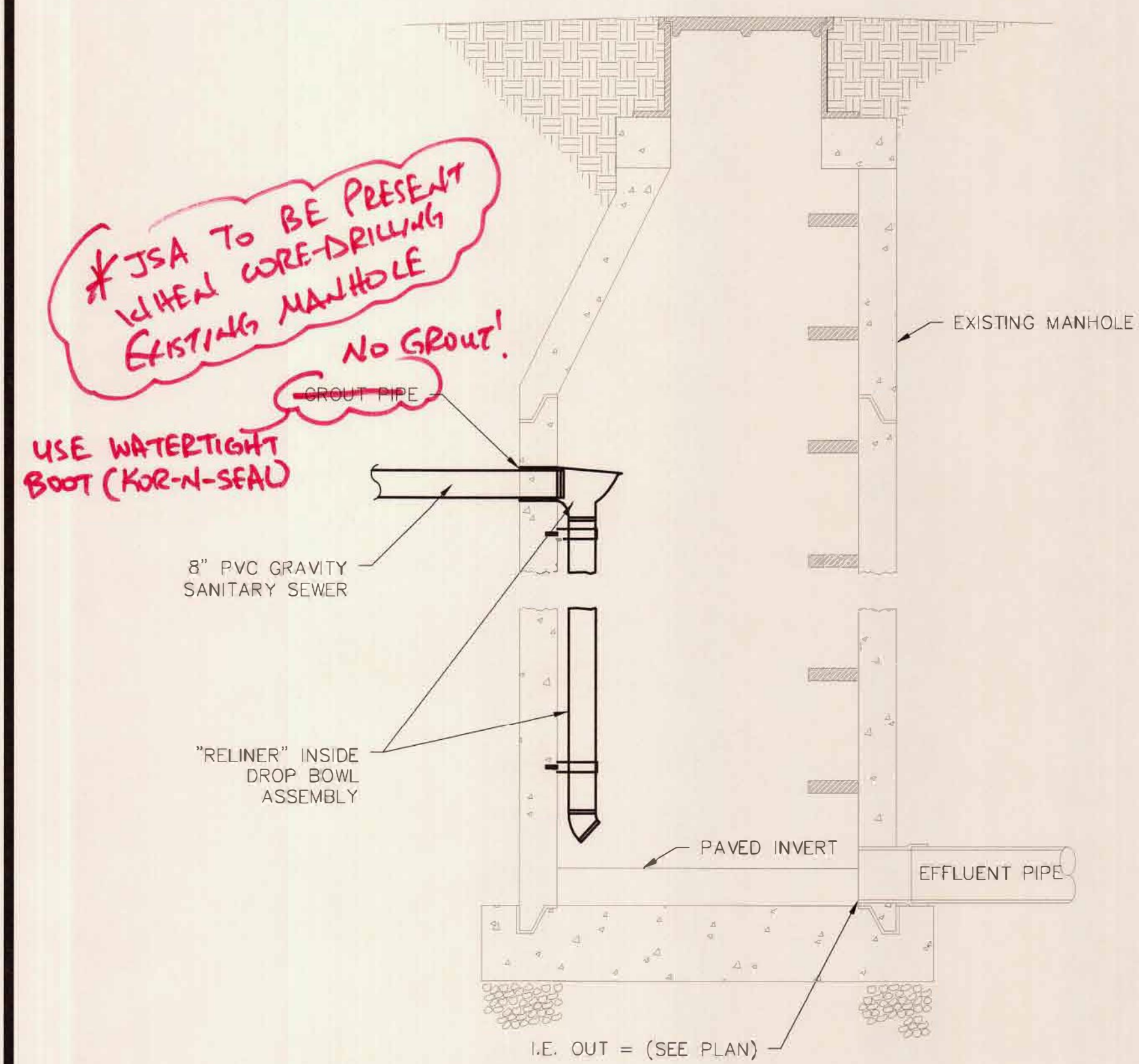
PROJECT NO. 19231	DATE: APRIL 2020	CHECKED BY: BG
DRAWN BY: DRC	BY: _____	DATE: _____
REV. DESCRIPTION	BY	DATE

BACON | FARMER | WORKMAN
ENGINEERING & TESTING, INC.
400 S. MAIN ST. SUITE 200
PADUCAH, KY 40360
PHONE: 270.443.2525
FAX: 270.443.2526
902 JAMES EARL RAY BLVD. SUITE 2
PADUCAH, KY 40360
PHONE: 270.443.4822
FAX: 270.443.4823



SANITARY SEWER DETAILS
US HIGHWAY 60
PADUCAH, McCRACKEN COUNTY, KENTUCKY
JACKSON PURCHASE ENERGY CORPORATION FACILITY

SHEET
SS-2

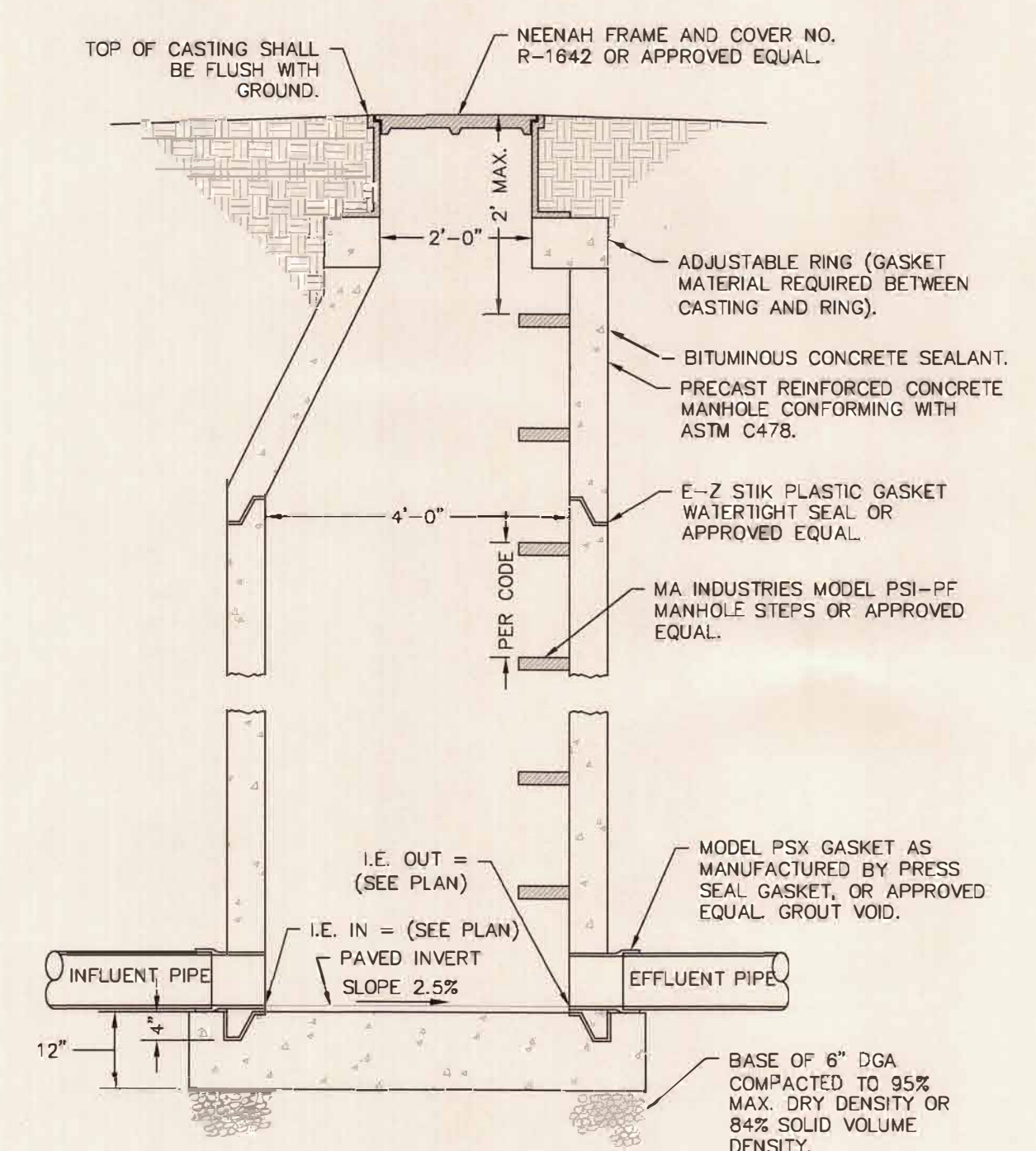


**JSA TO BE PRESENT WHEN CORE-DRILLING EXISTING MANHOLE*
NO GROUT!
USE WATERTIGHT BOOT (KOR-N-SEAL)

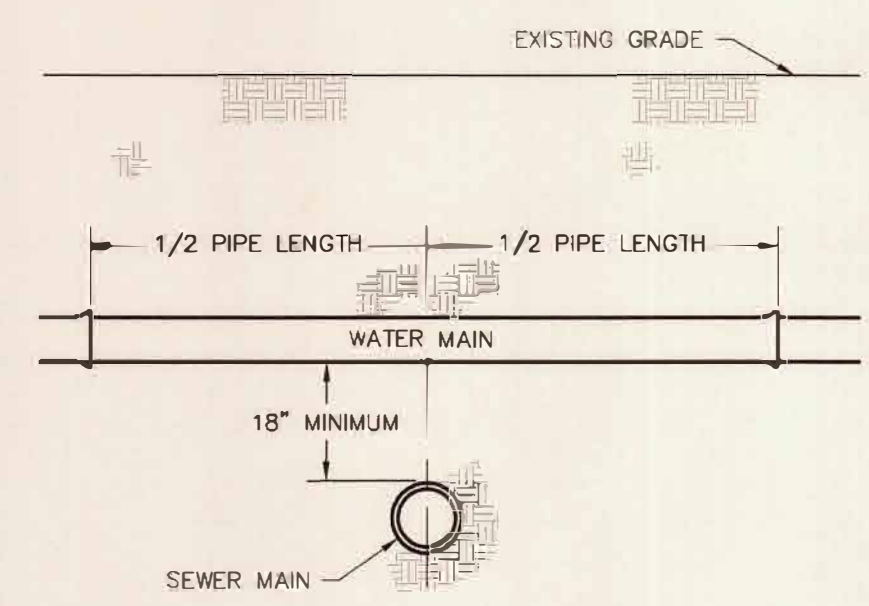
NOTE: THE "INSIDE DROP BOWL" BY RELINER MAY BE USED IN LIEU OF AN EXTERNAL DROP IF AN INTERNAL DROP IS CONSTRUCTED, THE ROCK BEDDING SHALL EXTEND TO 6" ABOVE THE PIPE.

1 CONNECTION TO EXISTING MANHOLE w/ INSIDE DROP
SCALE: N.T.S.

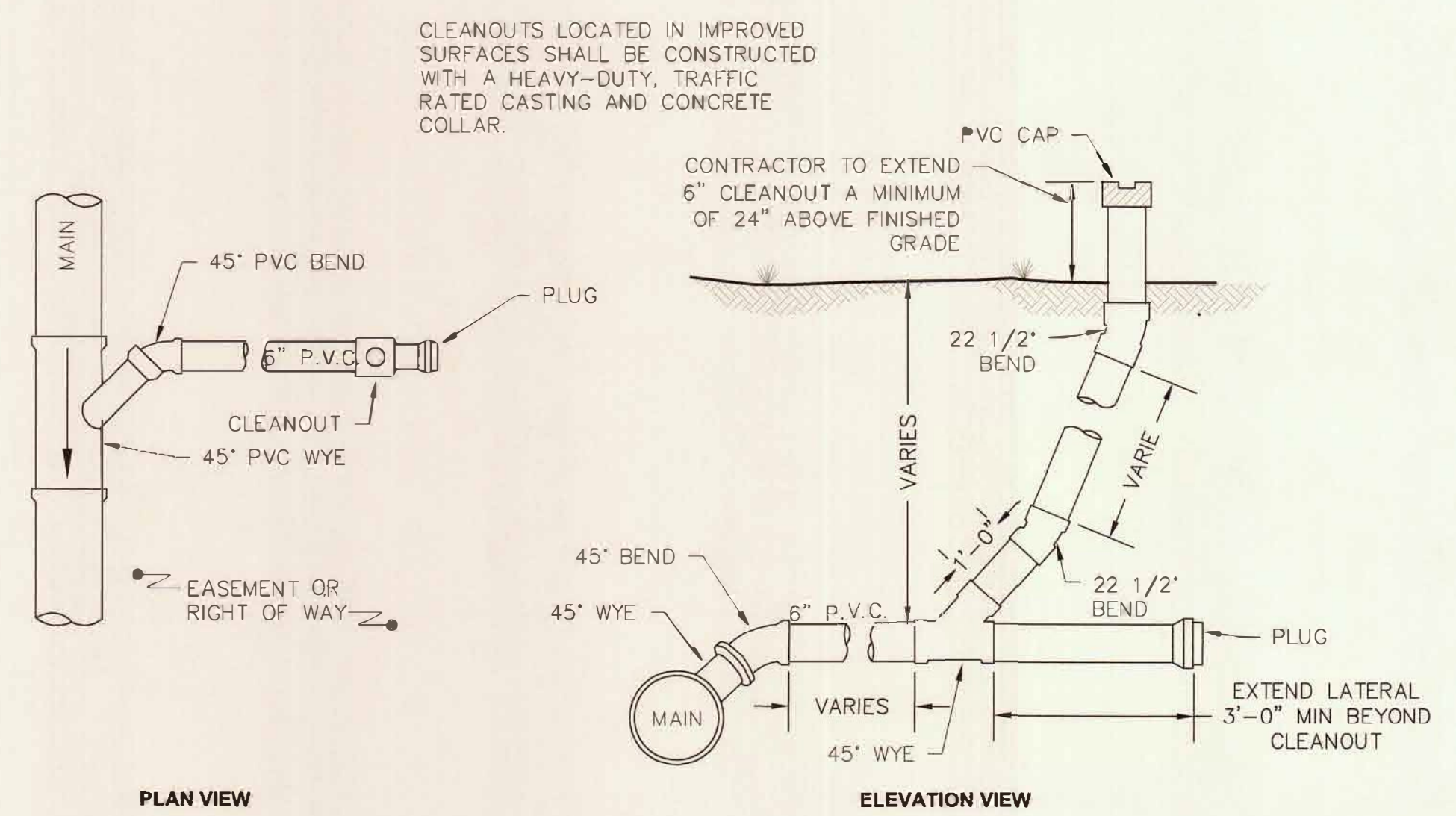
- SITE UTILITY NOTES:**
- CONTRACTOR SHALL COORDINATE EXACT LOCATION OF UTILITY LINES AND TIE-IN POINTS WITH LOCAL UTILITY COMPANIES AND INSTALL APPROPRIATE CONDUITS, FOUNDATIONS AND ETC. FOR SERVICE TO UTILITY CONNECTION POINT AS IDENTIFIED HEREON OR AS DIRECTED BY UTILITY PROVIDER. SERVICES INCLUDE, WATER, GAS, ELECTRIC, TELEPHONE, CABLE T.V. AND INTERNET.
 - SEE PLUMBING PLANS FOR CLEAN-OUT DETAILS.
 - THE CONTRACTOR IS RESPONSIBLE FOR ALL UTILITY TAP-ON FEES, METERS AND ETC. CONTRACTOR TO COORDINATE WITH UTILITY COMPANIES.
 - ALL CONSTRUCTION SHALL BE IN CONFORMANCE WITH FEDERAL, STATE & LOCAL CODES AND SPECIFICATIONS.
 - CONTRACTOR SHALL VERIFY SIZE, TYPE, LOCATION AND DEPTH OF UTILITIES ENTRY TO BUILDING WITH ARCHITECTURAL AND MECHANICAL/PLUMBING/ELECTRICAL PLANS.
 - ALL TRENCHES BENEATH PROPOSED OR EXISTING IMPROVED SURFACES (ASPHALT/CONCRETE), SHALL BE BACKFILLED WITH COMPACTED CRUSHED STONE. CONTRACTOR SHALL RESTORE EXISTING IMPROVED SURFACES WITH SAME TYPE AND THICKNESS, SEE DETAILS.
 - THE CONTRACTOR SHALL FULLY RESTORE ALL AREAS (ASPHALT, CONCRETE, CURBS, SIDEWALKS, LANDSCAPING, & ETC.) DISTURBED DURING CONSTRUCTION AT NO ADDITIONAL COST TO THE OWNER.
 - THE SANITARY SEWER LATERAL SHALL BE INSTALLED AT A MINIMUM OF 1.0% SLOPE. INSTALL STACKS AND CLEAN OUTS AS REQUIRED PER PLUMBING CODES. SEE "MEP" PLANS FOR SIZE AND SPECIFICATIONS.
 - CONTRACTOR SHALL NOTIFY UTILITY OWNERS PRIOR TO ANY CONNECTIONS OR WORK INVOLVING THEIR FACILITIES.
 - ALL UTILITY MATERIALS AND CONSTRUCTION SHALL COMPLY WITH THAT PARTICULAR UTILITY PROVIDER'S STANDARDS, METHODS AND PROCEDURES.
 - CONTRACTOR TO COORDINATE TELEPHONE, INTERNET AND CABLE T.V. SERVICE WITH LOCAL PROVIDER. SERVICES TO BE INSTALLED UNDERGROUND IN PVC CONDUIT. REFER TO DETAILS FOR BEDDING AND BACKFILL REQUIREMENTS.



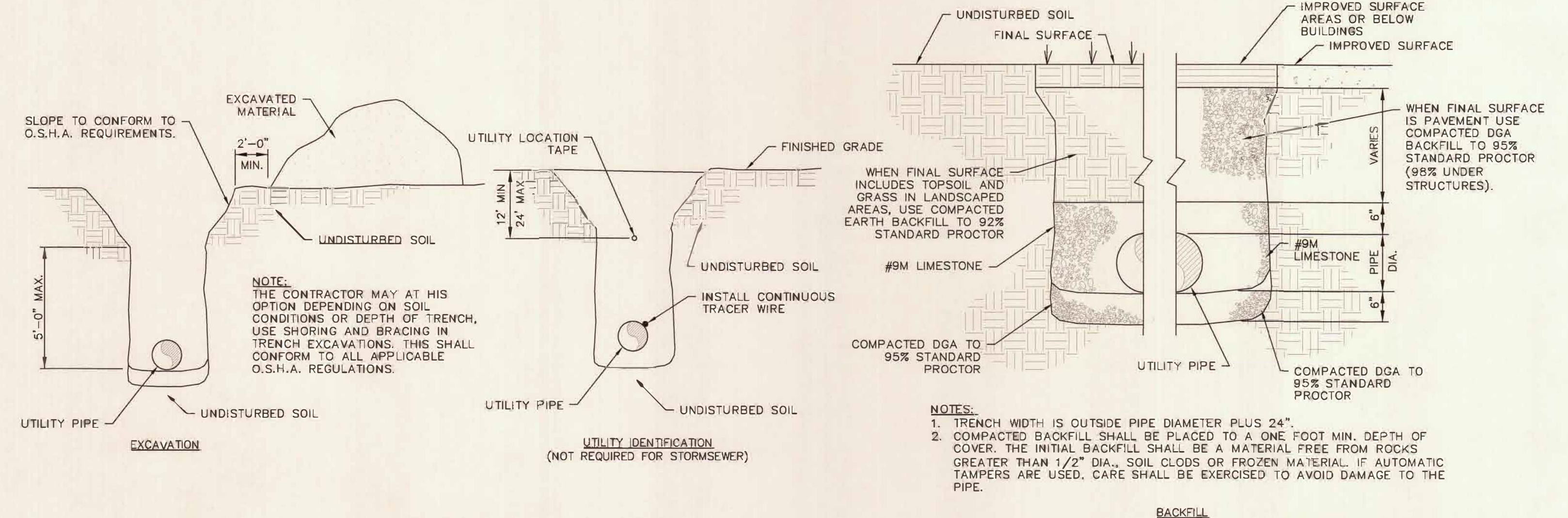
2 48"Ø SANITARY SEWER MANHOLE
SCALE: N.T.S.



3 WATER MAIN CROSSING SEWER
SCALE: N.T.S.



5 SERVICE LATERAL WITH CLEANOUT (UNIMPROVED)
SCALE: N.T.S.



4 UTILITY TRENCH DETAILS FOR GRAVITY SYSTEM
SCALE: N.T.S.

PADUCAH McCRACKEN COUNTY
JOINT SEWER AGENCY
APPROVED
APPROVED AS NOTED
NOT APPROVED
Name: *Stefano* Date: _____