

COMMONWEALTH OF KENTUCKY
BEFORE THE PUBLIC SERVICE COMMISSION

In the Matter of:

**ELECTRONIC PROPOSED ACQUISITION BY)
BLUEGRASS WATER UTILITY OPERATING)
COMPANY, LLC AND THE TRANSFER OF)
OWNERSHIP AND CONTROL OF ASSETS BY P.R.)
WASTEWATER MANAGEMENT, INC., MARSHALL)
COUNTY ENVIRONMENTAL SERVICES, LLC, LH)
TREATMENT COMPANY, LLC, KINGSWOOD)
DEVELOPMENT, INC., AIRVIEW UTILITIES, LLC,)
BROCKLYN UTILITIES, LLC, FOX RUN)
UTILITIES, LLC, AND LAKE COLUMBIA)
UTILITIES, INC.)**

**CASE NO.
2019-00104**

NOTICE OF FILING

Pursuant to ordering paragraph 3 of the Appendix to the Commission's August 14, 2019 Final Order in this case, Bluegrass Utility Operating Company is filing an updated organization chart showing all of its subsidiaries and affiliates as of December 31, 2023.

Notice is given to all parties that the following materials are hereby filed into the record of this proceeding and are attached as exhibits herein:

- Bluegrass Water Utility Operating Company's Organization Chart, which is current as of December 31, 2023.

On this 26th day of March, 2024.

Respectfully submitted,

/s/ Edward T. Depp

Edward T. Depp
R. Brooks Herrick
John D.A. Lavanga

Dinsmore & Shohl LLP
101 South Fifth Street
Suite 2500
Louisville, KY 40202
Telephone: (502) 540-2347
Facsimile: (502) 585-2207
tip.depp@dinsmore.com
brooks.herrick@dinsmore.com
john.lavanga@dinsmore.com

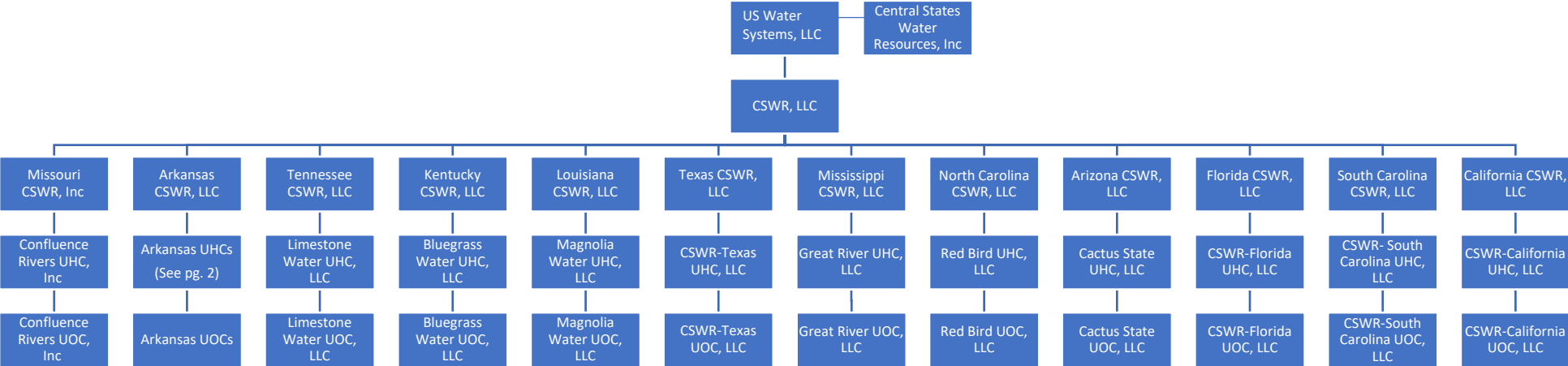
*Counsel to Bluegrass Water Utility
Operating Company*

Certification

I hereby certify that a copy of this Notice of Filing and its exhibits has been served electronically on all parties of record through the use of the Commission's electronic filing system, and there are currently no parties that the Commission has excused from participation by electronic means. Pursuant to the Commission's July 22, 2021 Order in Case No. 2020-00085, a paper copy of this filing has not been transmitted to the Commission.

/s/ Edward T. Depp
Edward T. Depp
*Counsel to Bluegrass Water
Utility Operating Company*

Central States Water Resources Corporate Entity Organizational Chart



Arkansas CSWR Organizational Chart Detail

