

MONDAY MORNING SAFETY MEETING

DATE: April 9, 2019

TIME: 7:43 AM

The meeting was held at Grayson Rural Electric Cooperative Corporation.

Those attending are on the attached sign-in sheet.

Meeting was opened by Kyle Clevenger.

The invocation was given by Mark Hutchinson.

Kyle Clevenger, Manager of Operations, was in charge of meeting.

Tony Dempsey with KAEC was our guest speaker. He presented a power point on **Chainsaw Safety**. Topics that were discussed was parts of a chainsaw, safety features, caring to the saw daily, wear personal protective equipment, types of hazards, correct starting methods, and ground and leg lock method.

Kyle explained that it was going to be a pretty day, be safe and go home tonight.

The meeting was adjourned at 8:55 ~~AM~~.

Respectfully Submitted,



Nancy Lea Madden

Grayson RECC Safety Meeting Roster

Date 4-9-19

**OUTSIDE**

Willis Barker Mechanic  
 Michael Blevins Maintenance Leadman  
 Tony Brewer First Class Lineman  
 Steven Burton First Class Lineman  
 Steve Bush Meterman First Class  
 Richard Easton Maintenance Leadman  
 Cheyenne Holbrook Maintenance Leadman  
 Mark Hutchinson Maintenance Leadman  
 Roger Kitchen Warehouseman  
 Donnie Martin Groundman  
 Shane McDavid First Class Lineman  
 Scott McGuire Meterman First Class  
 Chris Mosier Maintenance Leadman  
 Mike Reynolds Maintenance Leadman  
 Ryan Rice First Class Lineman  
 Bryan Rogers First Class Lineman  
 Joe Sargent Engineering Party Chief  
 Scott Speaks Engineering Party Chief  
 Justin Staniford First Class Lineman  
 Herbie Steagall Construction Leadman  
 Jamey Withrow Construction Leadman

*Willis Barker*  
*Michael Blevins*  
*Tony Brewer*  
*Steven Burton*  
*Steve Bush*  
*Richard Easton*  
*Cheyenne Holbrook*  
*Mark Hutchinson*  
*Roger Kitchen*  
*Donnie Martin*  
*Shane McDavid*  
*Scott McGuire*  
*Chris Mosier*  
*Mike Reynolds*  
*Ryan Rice*  
*Bryan Rogers*  
*Joe Sargent*  
*Scott Speaks*  
*Justin Staniford*  
*Herbie Steagall*  
*J. Withrow*

**INSIDE**

Anita Bellew Billing Administrator  
 Rebecca Bender Member Service Representative  
 Robert Brown Geographical Information System Technician  
 Sherry Buckler Mgr of Accounting & Human Resources  
 Kim Bush Executive Assistant  
 Bradley Cherry Mgr of Finance & Accounting  
 Kyle Clevenger Manager of Operations  
 Sherry Conley Member Services Supervisor  
 Carol Fraley President & CEO  
 Joan Litteral Payroll/Bookkeeper  
 Nancy Madden Division Assistant of Operations  
 Mike Martin Asst. Manager of Operations  
 Andrea McCleese Technical Services Supervisor  
 Brian Poling Mgr of Technical Services  
 Tina Preece Member Services Advisor  
 Sue Roberts Customer Representative/Cashier  
 Caitlin Sexton Division Assistant, Accounting & Finance  
 Peggy Skaggs AMI Administrator  
 Marsha Thacker Plant Accountant  
 Amber Weddington Member Service Representative  
 Janet Whitt Member Service Representative

*Anita Bellew*  
*Rebecca Bender*  
*Sherry Buckler*  
*Kim Bush*  
*Bradley Cherry*  
*Kyle Clevenger*  
*Sherry Conley*  
*Joan Litteral*  
*Nancy Madden*  
*Mike Martin*  
*Brian Poling*  
*Tina Preece*  
*Sue Roberts*

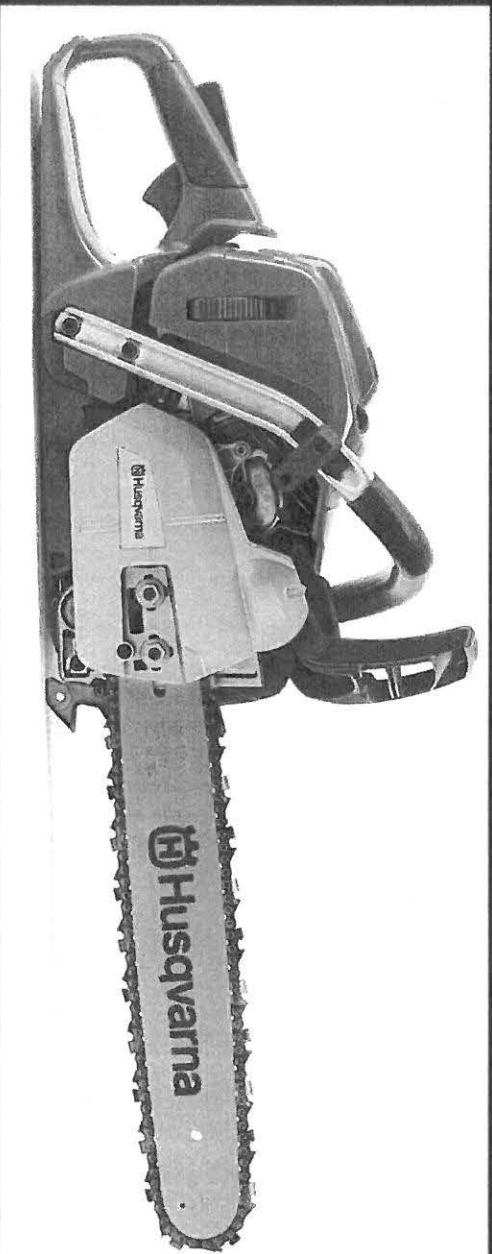
# CHAINSAW SAFETY

KENTUCKY ELECTRIC  
COOPERATIVES

TONY DEMPSEY



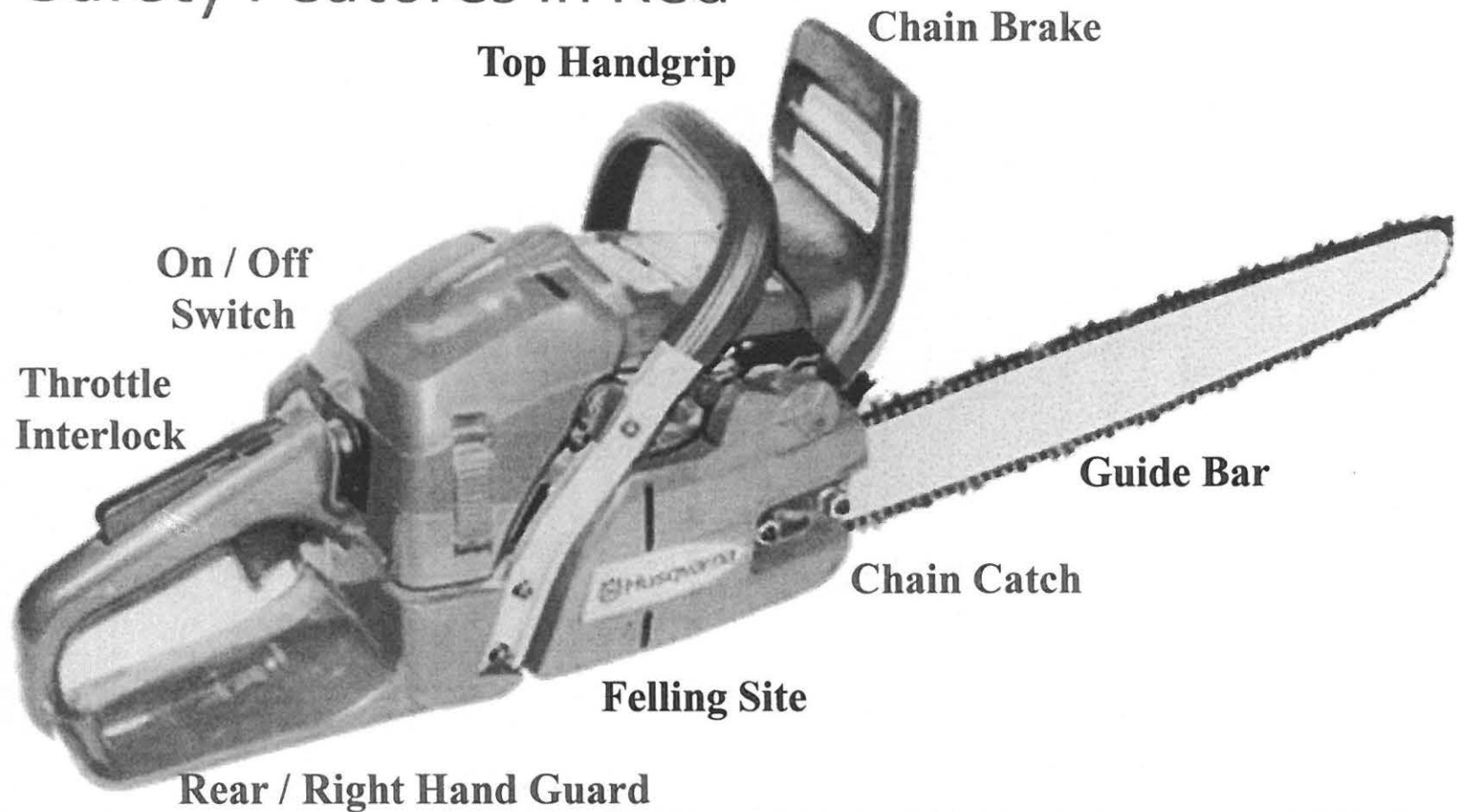
Over 40,000 people are injured by  
chain saws every year...



How not to be one of them!

# Parts of a Chain Saw

## Safety Features in Red



# Caring for your Saw Daily

- Air Filter & Cover
- Safety Features
- Remove side cover and bar to clean area
- Turn guide bar, clean groove, oil end sprocket
- De-Burr guide bar rails
- Keep saw properly sharpened
- File depth gauges(Rakers) as needed
- Use guide system and guage



## Look for these safety features

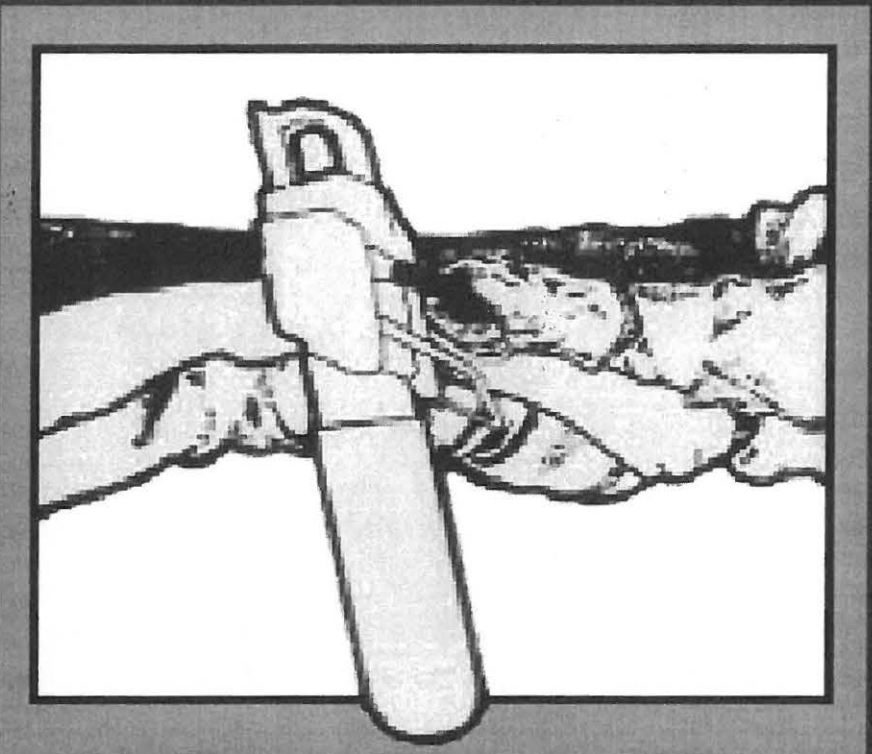
- Low kickback saw chain
- Hand guard
- Safety tip
- Chain brake
- Vibration reduction system
- Spark arrestor on gasoline models
- Trigger or throttle lockout
- Chain catcher
- Bumper spikes

The most common  
chainsaw injury is????

- Cut to left thigh!
- WHY?

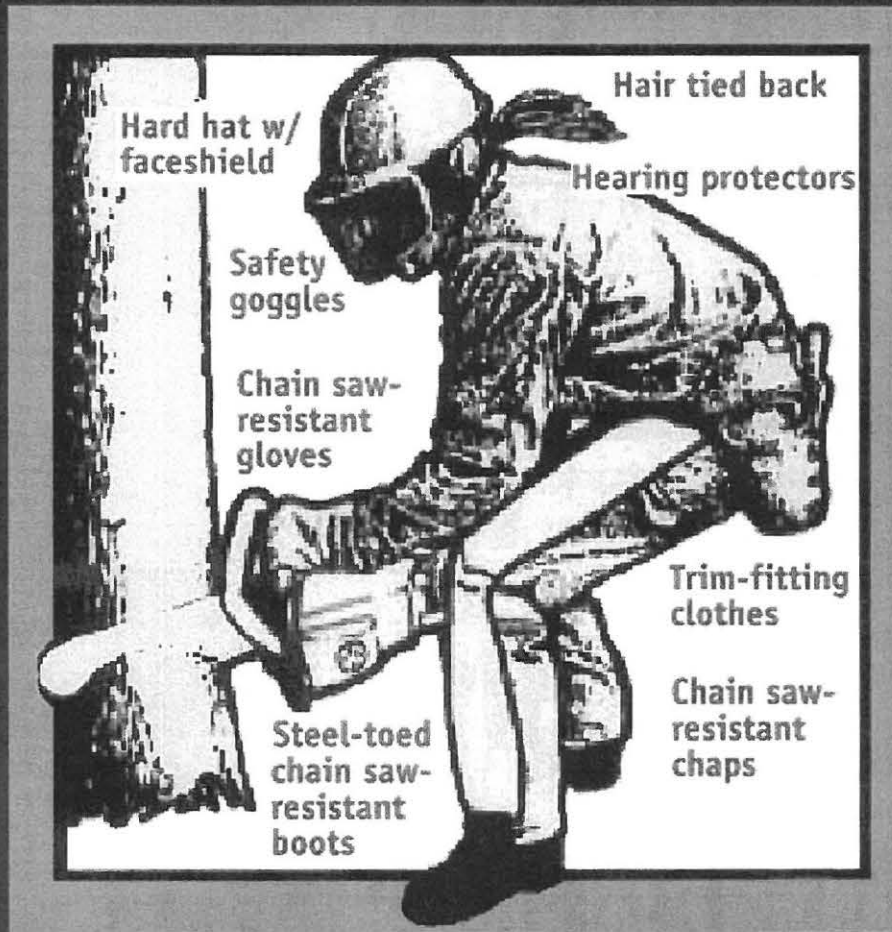


# How to Carry a Chain Saw



- The engine should be shut off.
- The chain brake should be engaged.
- The scabbard is covering the guide bar to prevent cuts.
- The chain saw is carried backward.
- The muffler is carried away from the body to prevent burns.

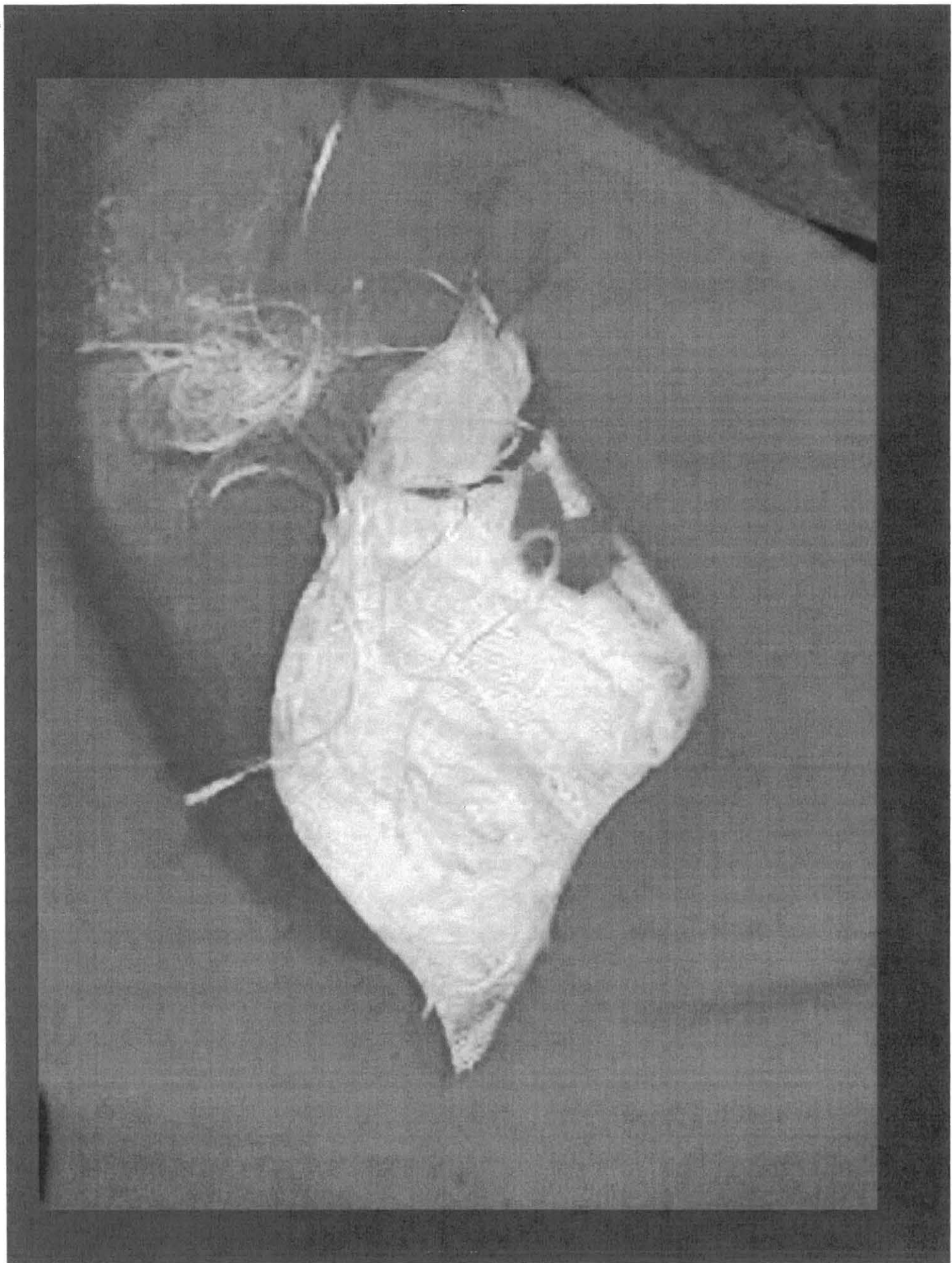
# Preventing Injuries



- Personal protective equipment (PPE) **MUST** be worn at all times.
- This can greatly reduce injuries and prevent death from chain saw injuries.
- Keep both hands on the chain saw handles.







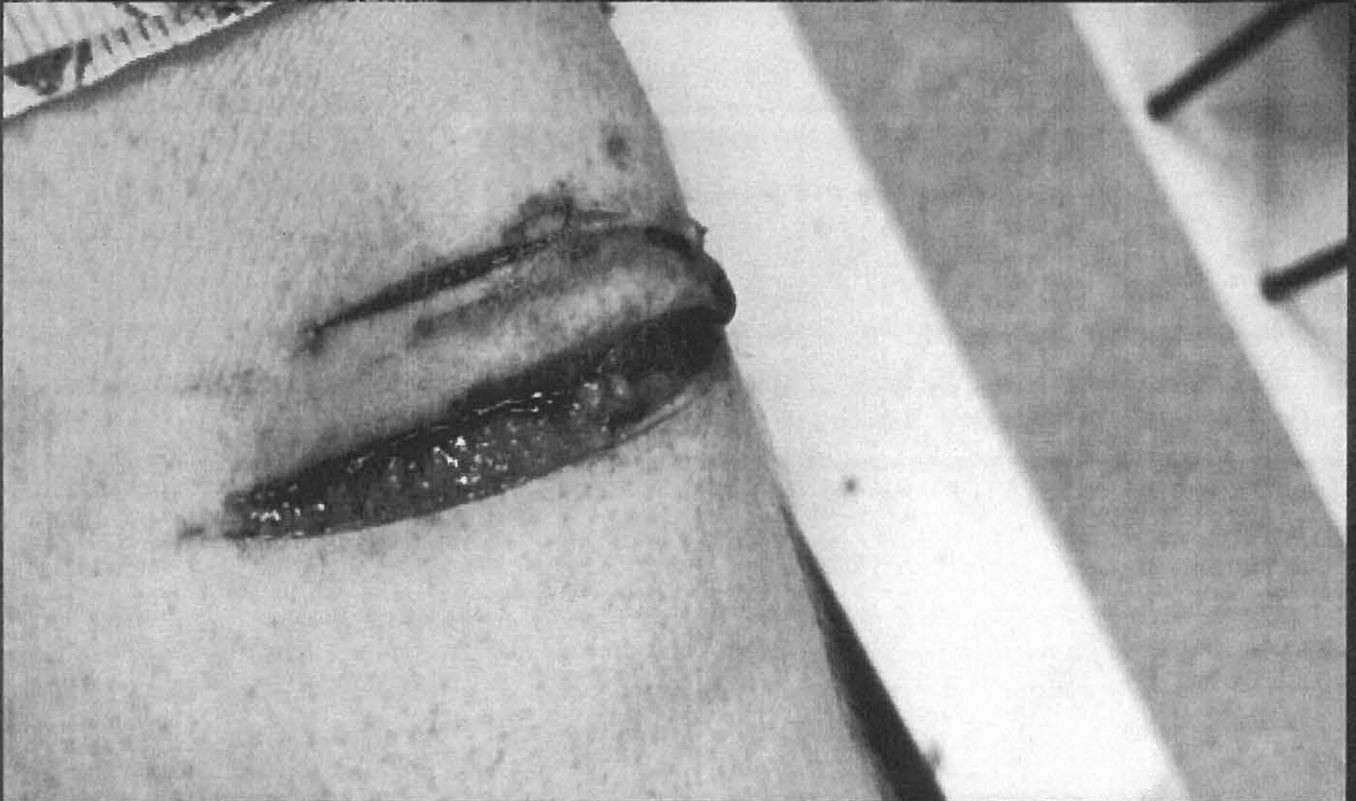
# Battery Powered Saws



- Full throttle in under a second
- 6600 rpm
- High Torque
- No chaps to Protect

**WARNING!!**  
**GRAPHIC PHOTO**  
**NEXT SLIDE**



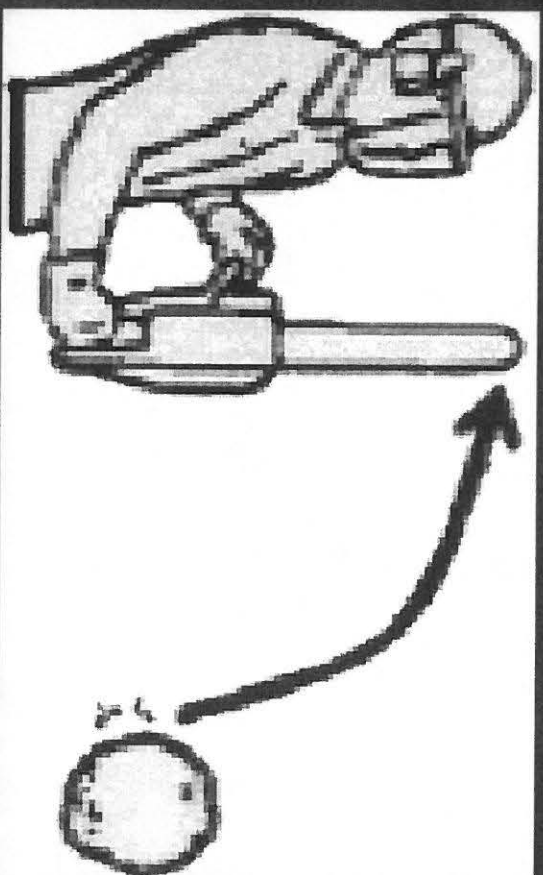


# Types of Hazards

- Kickback
- Vibration Syndrome
- Widowmaker
- Entanglement
- Stump Jump
- Setback
- Crown Shatter
- Barber Chair
- Moving Tree
- Springpole

# What is Kickback?

- Kickback is caused by a spinning chain coming in contact with resistance.
- It causes the chain saw to "kick back" toward your face.
- It is not as common today because of chains with anti kickback drag teeth



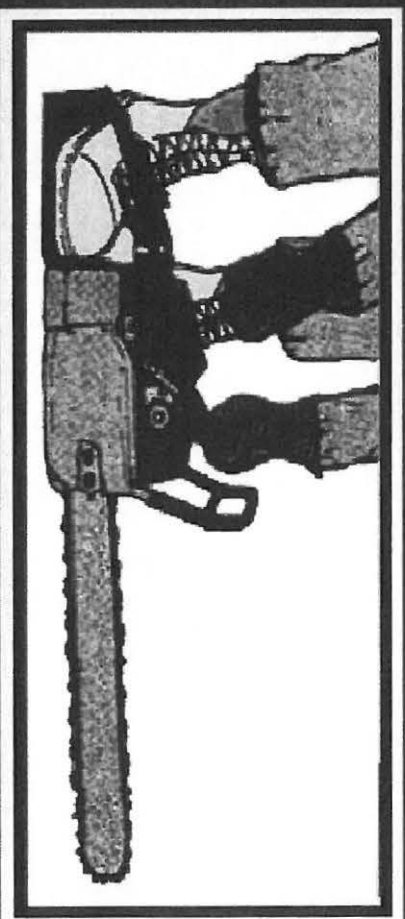


# How can Kickback be Prevented?

- NEVER cut with the tip of the chain saw!
- Lock your front elbow.
- Be careful not to cut through nails or knots in the wood.
- Stand to the side.
- Use a low kickback chain.
- Use a chain brake.

# Correct Starting Ground Method

1. Hold the chain saw firmly in place.
2. Remove all loose debris and make sure the guide bar is not touching anything.
3. Make sure the chain brake is engaged.
4. Grip the front handle with left hand.



5. Depress the throttle for one second with the right hand.
6. The chain should not creep forward because the brake is engaged.



# Correct Starting Leg Lock Method



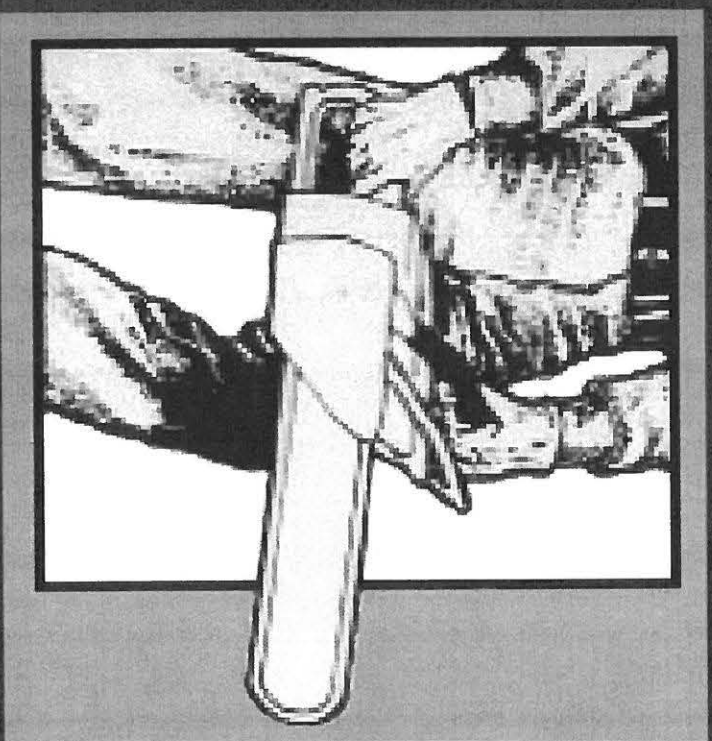


# Incorrect Starting



# How to Hold a Chain Saw

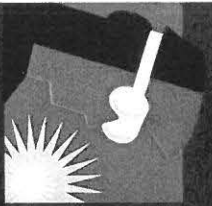
- Keep thumb under the bar of front hand grip
- Keep firm grip with right hand on rear handle so the user is in control of the stop switch and throttle interlock
- There are no left handed chainsaws!



# Safety Tips

- Keep the chain saw handle clean and dry.
- Make sure that the handle is free from oil or fuel.
- Keep your chain saw properly maintained.
- Follow the manufacturer's suggestions for sharpening and maintaining the equipment.
- Never use a chain saw to cut anything other than wood!!!

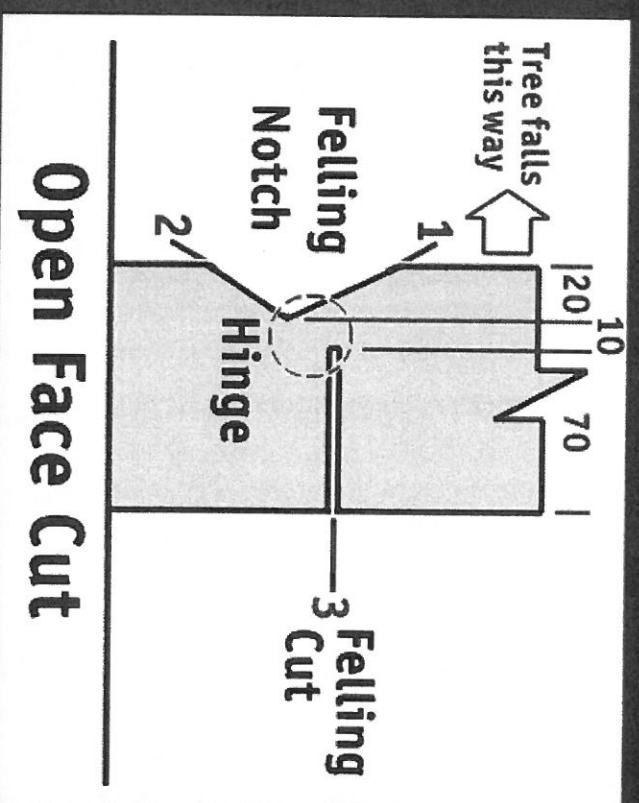
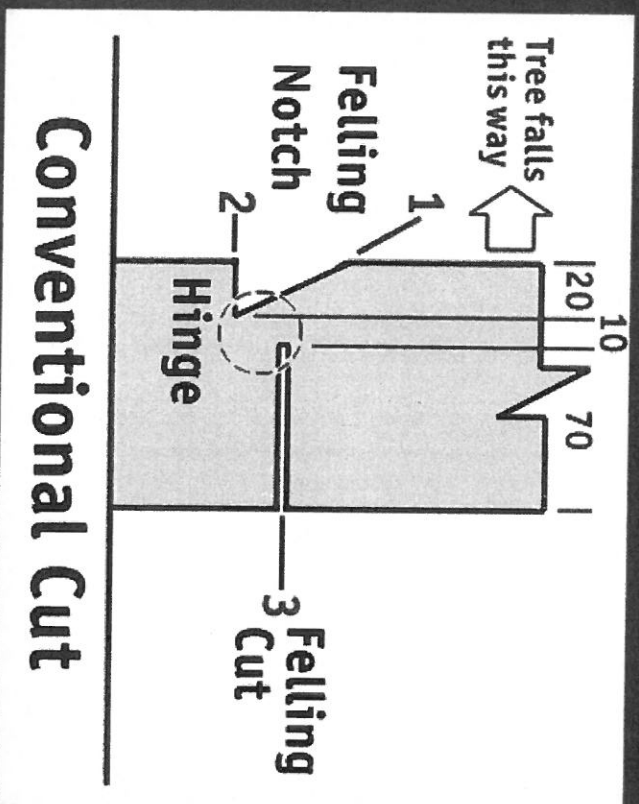




## How Can You Eliminate Some Hazards in the Area?

- Clear loose debris from the area.
- Remove combustible materials.
- Look for broken or dead limbs in the tree to be felled.
- Assure that there are no power lines nearby.
- Make sure you have an escape route.
- Be aware of where others are in relation to what you are cutting. This includes people, houses, automobiles, etc.

# Felling 101: Types of Cuts



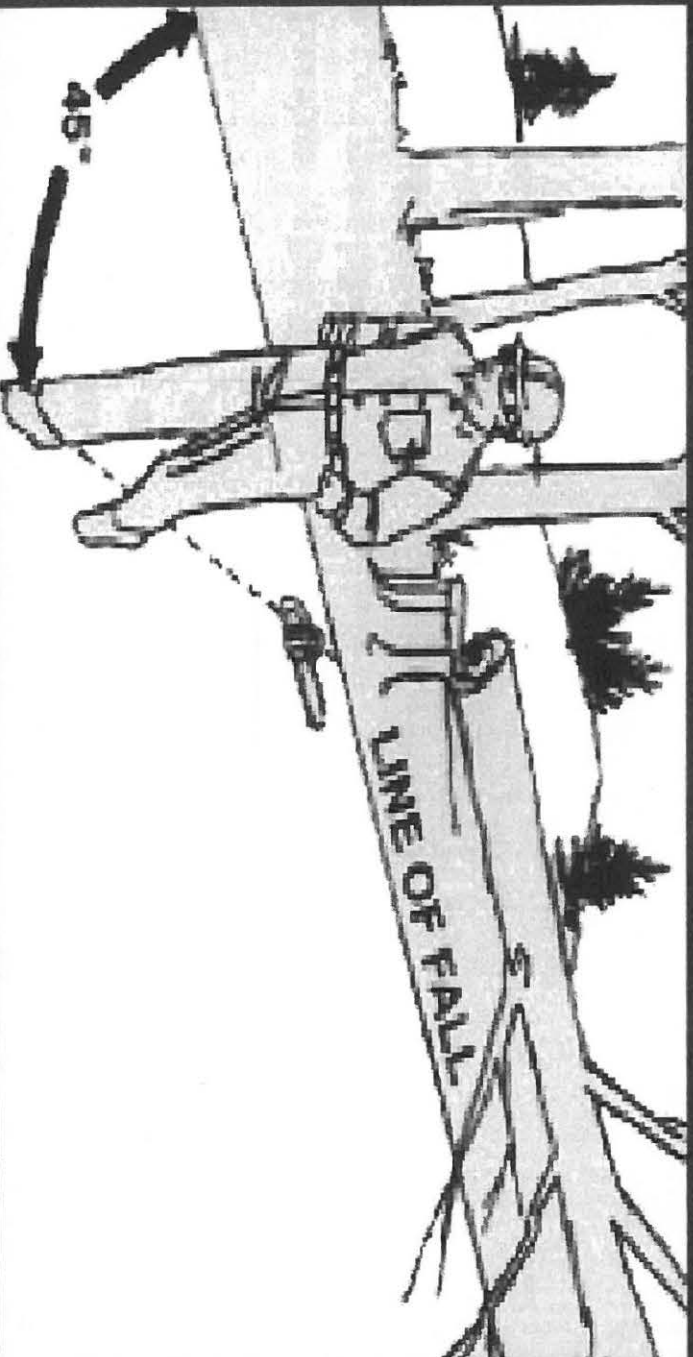
# Have an Escape Plan... and Use it!

1. Plan an escape route to prevent injuries due to stump jump.
2. When the tree begins to move, turn off the chain saw and escape.



# Escaping From Danger

- Always plan an escape route that is a path at a 45-degree angle away from the line of the tree's fall.





# When Do You Call a Professional?



- Any time that a situation requires more skills than you have.
- If a tree has a larger diameter than the length of the guide bar.
- If the tree is dead, hollow, split, or rotten.
- If there isn't enough room to safely fell the tree or if there is no clear escape route.



*Be AWARE!*

*Be ALERT!*

*Be ALIVE!*



