

Kentucky Power Company
KPSC Case No. 2018-00418
Commission Staff's First Set of Data Requests
Order Dated January 23, 2019

DATA REQUEST

KPSC 1_4 Provide an aerial map depicting the locations of the Braidy Atlas Mill, the Braidy Service Center, the Braidy Life Center, and the Veloxint facility. Identify in this map the point of delivery for electric power and energy to be provided by Kentucky Power.

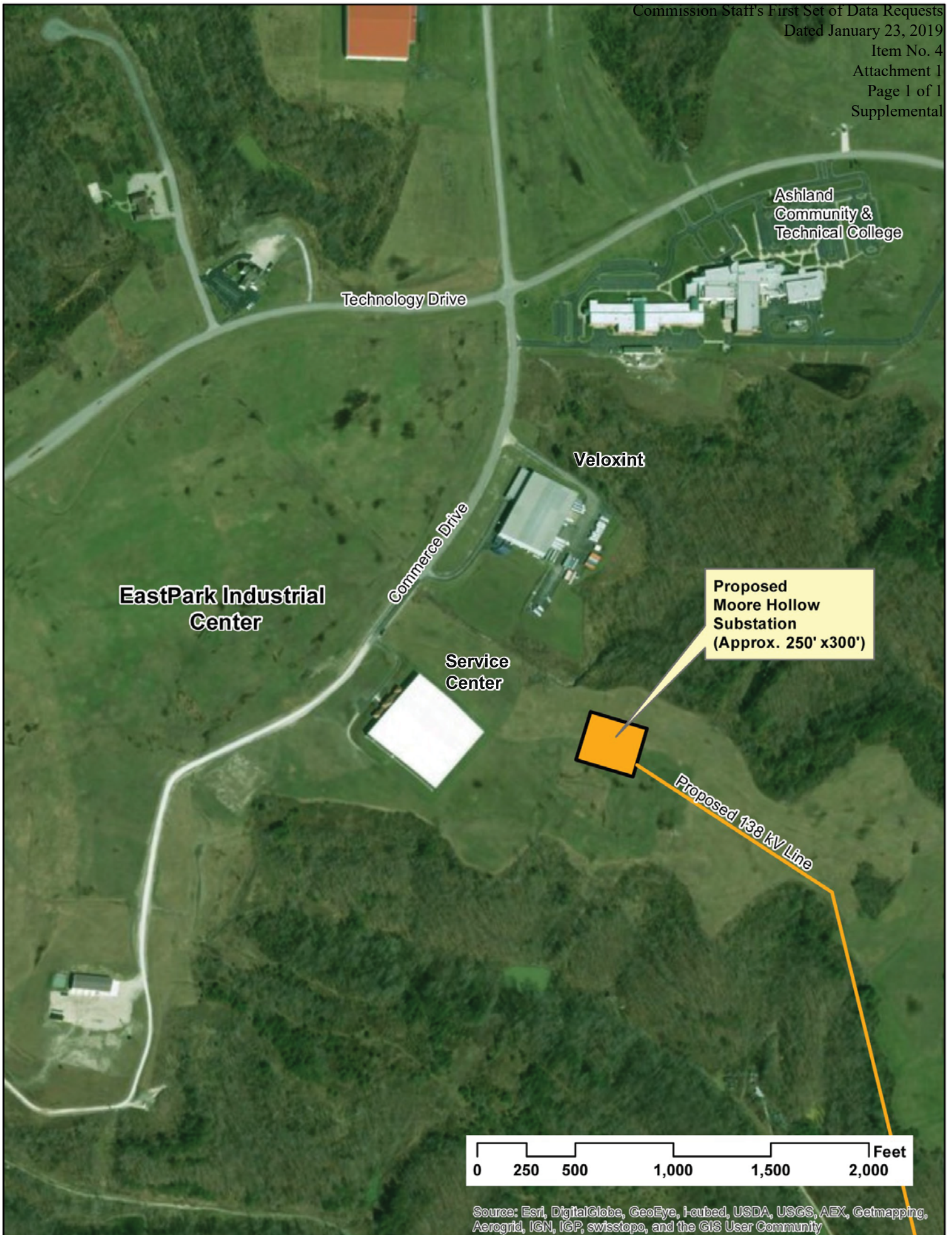
RESPONSE

The requested aerial map currently is not available. Kentucky Power will seasonably supplement this response with the map when it is available.

March 12, 2019 SUPPLEMENTAL RESPONSE

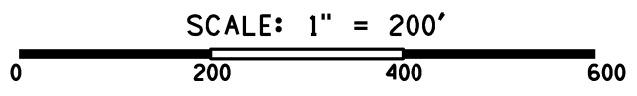
Please refer to KPCO_SR_KPSC_1_4_Attachment1.pdf and KPCO_SR_KPSC_1_4_Attachment2.pdf for the requested maps. The Braidy Atlas Mill and Braidy Life Center are not shown because Braidy has not definitively determined where the two facilities will be located. It is Kentucky Power's understanding the Braidy Atlas Mill will be located in the map area labeled "EastPark Industrial Center." The Company has no specific information on the location of the Life Center.

Witness: Ranie K. Wohnhas





Stage 1: Initial 34.5kV Service
 Stage 2: 34.5kV Express Feed
 Stage 3: Radial 138kV Line from KES to New Station
 Stage 4: Second 138kV Line From Princess Station to New Station (Completes Looped Service)



PROPOSED STATION LOCATION AND LINE EXITS FOR BRAIDY INDUSTRIES

VERIFICATION

The undersigned, Ranie K. Wohnhas, being duly sworn, deposes and says he is the Managing Director of Regulatory & Finance for Kentucky Power, that he has personal knowledge of the matters set forth in the foregoing responses and the information contained therein is true and correct to the best of his information, knowledge, and belief.


Ranie K. Wohnhas

Commonwealth of Kentucky)
)
County of Boyd) Case No. 2018-00418

Subscribed and sworn before me, a Notary Public, by Ranie K. Wohnhas this
11 day of March, 2019.


Notary Public

My Commission Expires 3-18-19

