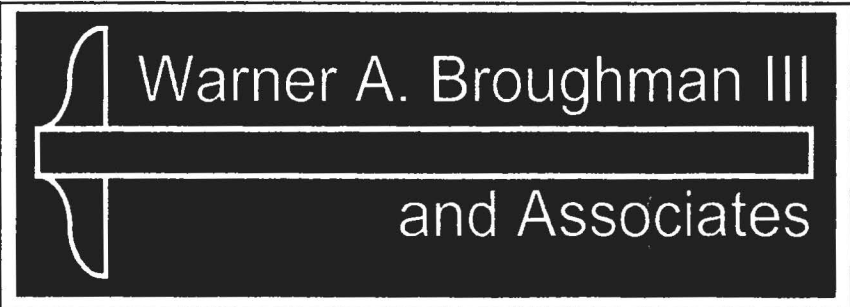


# NORTHEAST WOODFORD WATER DISTRICT

## SYSTEM UPGRADES

PIPELINES & APPURTENCES  
DECEMBER 2017

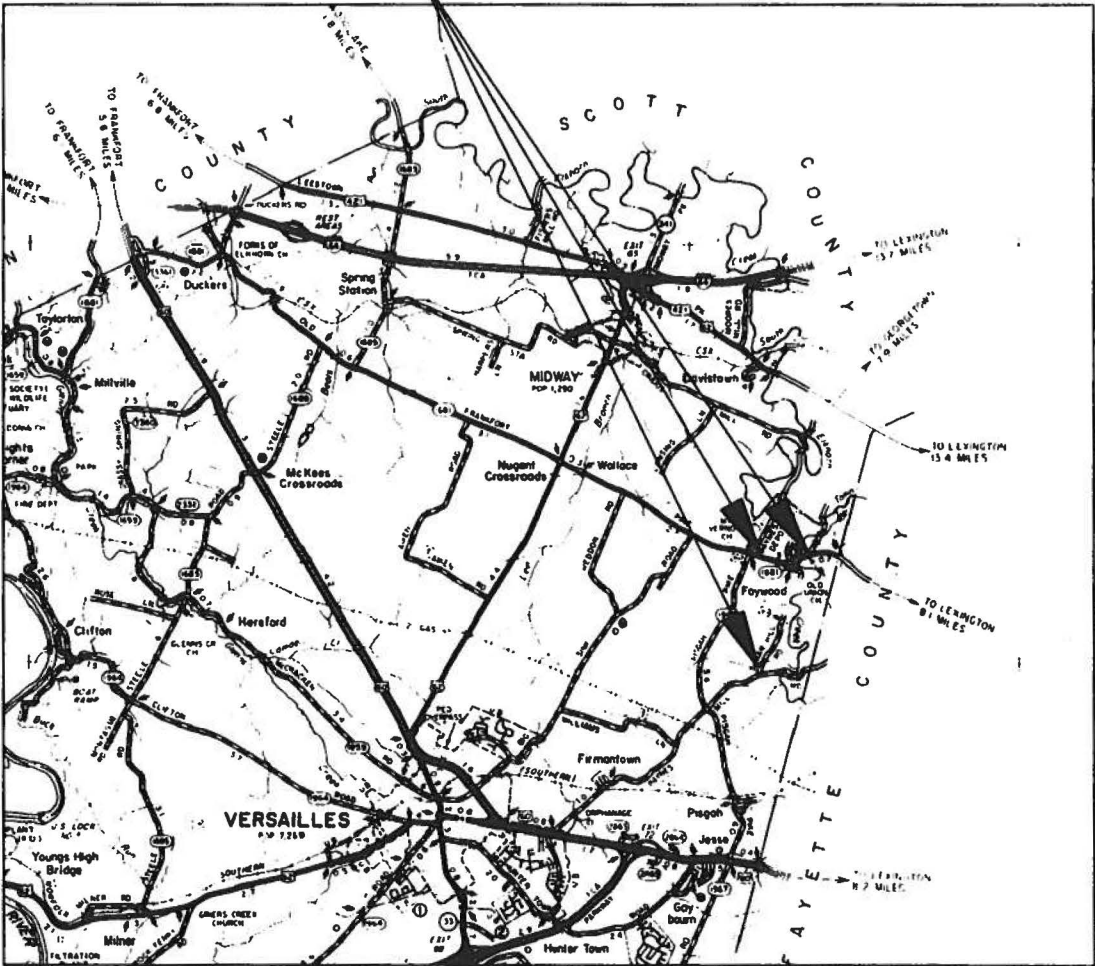


LEXINGTON

KENTUCKY

INDEX OF SHEETS	
SHEET	DESCRIPTION
COVER	TITLE, INDEX, & VICINITY MAP
1	OLD FRANKFORT PIKE @ PAYNES DEPOT ROAD
2	OLD FRANKFORT PIKE @ FAYWOOD LANE
3	SUGAR HILL PIKE
W-1	DETAIL SHEET
W-2	DETAIL SHEET

PROJECT SITES



VICINITY MAP



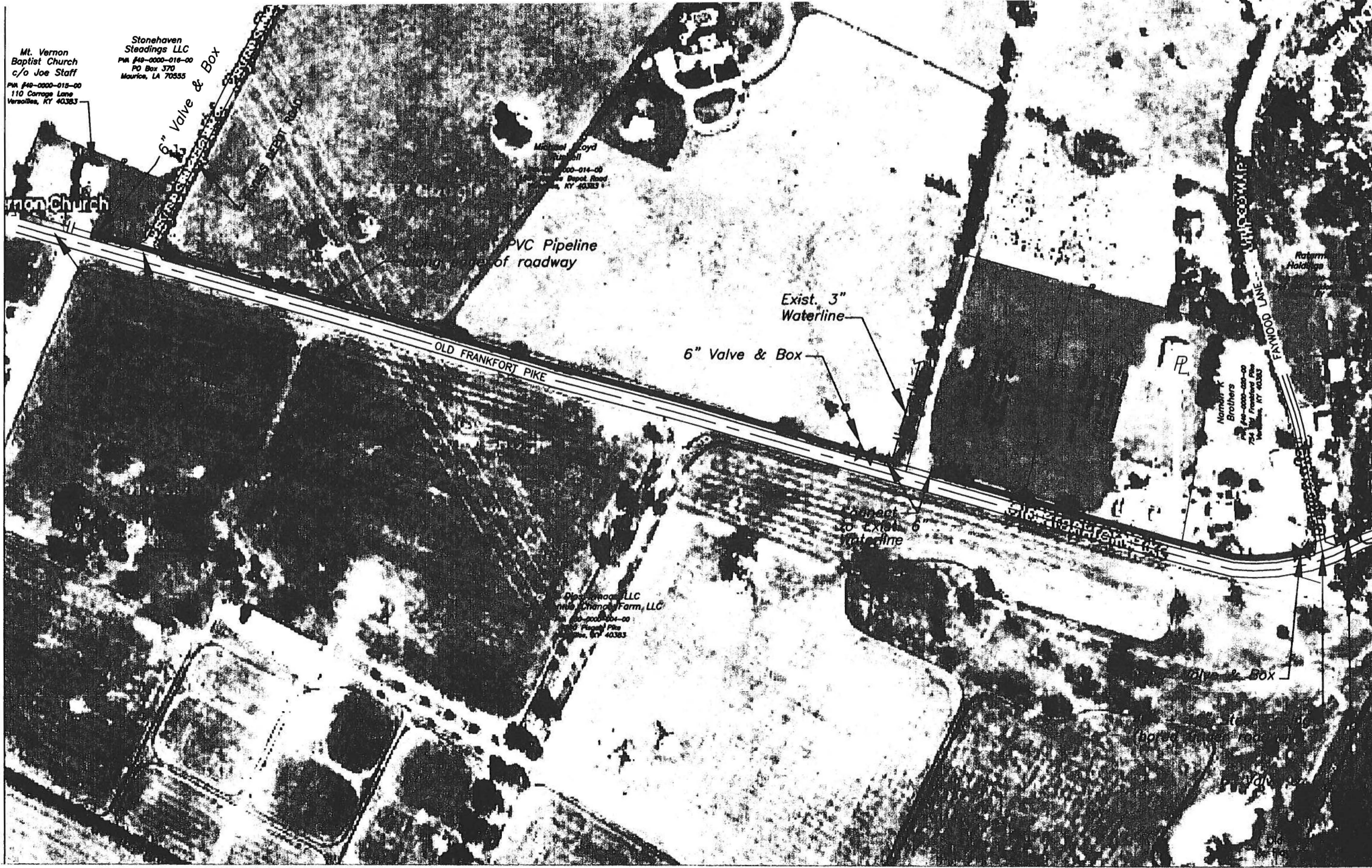
Mt. Vernon Baptist Church  
c/o Joe Staff  
P.O. #40-0000-015-00  
110 Carriage Lane  
Versailles, KY 40383

Stonehaven Steadings LLC  
P.O. #40-0000-016-00  
PO Box 370  
Maurice, LA 70355

Michael Loyd  
P.O. #40-0000-014-00  
Depot Road  
Versailles, KY 40383

Norman K Brothers  
P.O. #40-0000-009-00  
754 W. Frankfort Pike  
Versailles, KY 40383

Dishman LLC  
and Chandy Farm, LLC  
P.O. #40-0000-004-00  
P.O. #40-0000-018-00  
Versailles, KY 40383

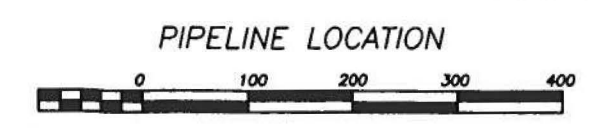


MATCH LINE SEE SHEET 2

Warner A. Broughman III  
and Associates

Concept WAB  
Drawn BJC  
Checked \_\_\_\_\_  
File 17-00

# NE WOODFORD WATER DISTRICT SYSTEM UPGRADE

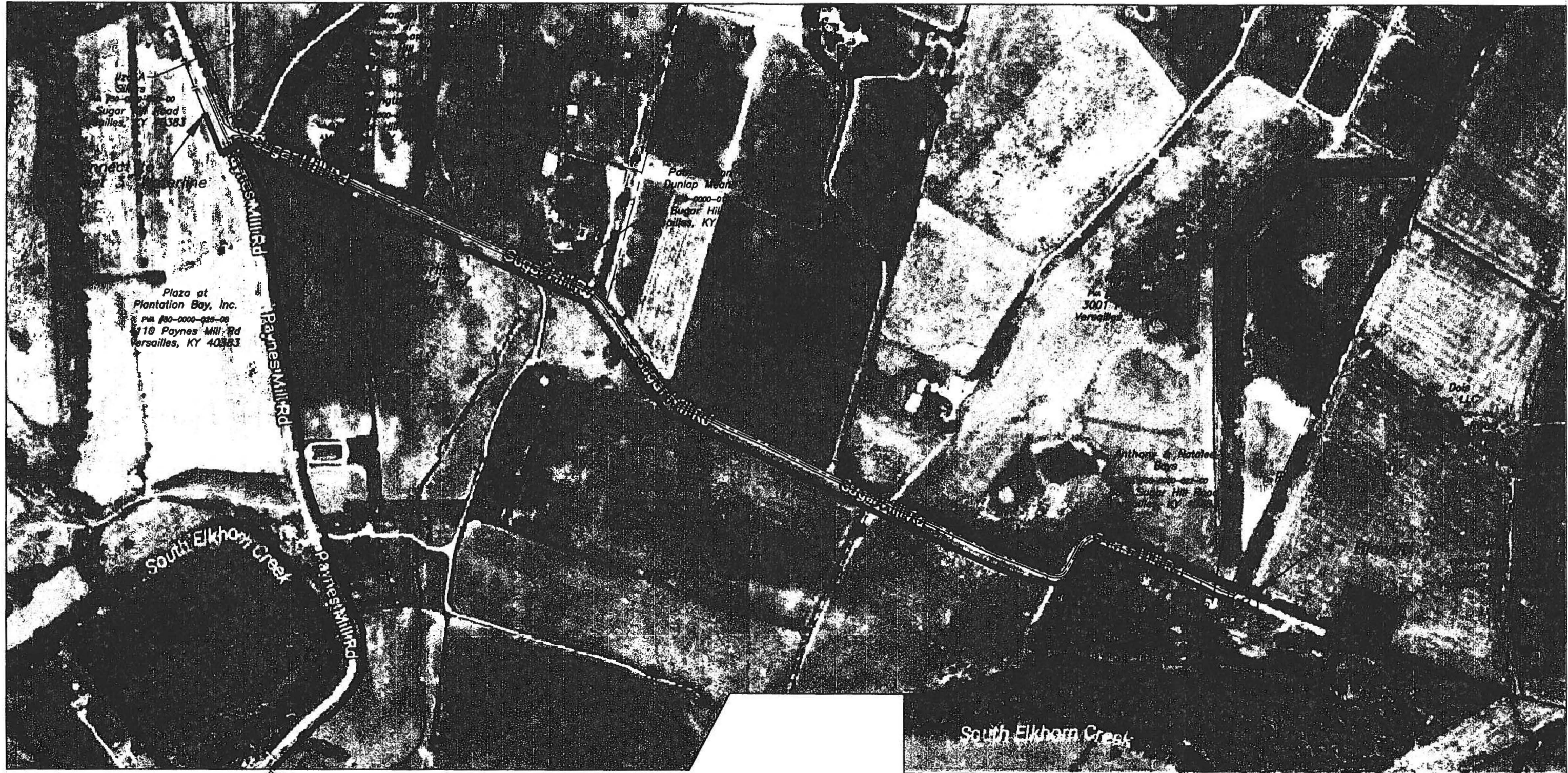


Sheet No.  
**1**









Plaza at  
Plantation Bay, Inc.  
PA #30-0000-025-00  
110 Paynes Mill Rd  
Versailles, KY 40383

Dunlap Meats  
PA #000-01  
Sugar Hill  
Versailles, KY

PA #  
3001  
Versailles

Anthony & Natalie  
Bays  
PA #0000-022-00  
Sugar Hill  
Versailles, KY

Dole  
LLC

Connect to  
Exist 3" Waterline

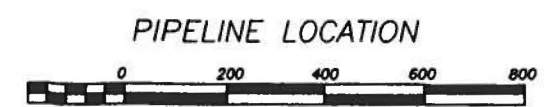
Sugar Hill Pike

South Elkhorn Creek

Warner A. Broughman III  
and Associates

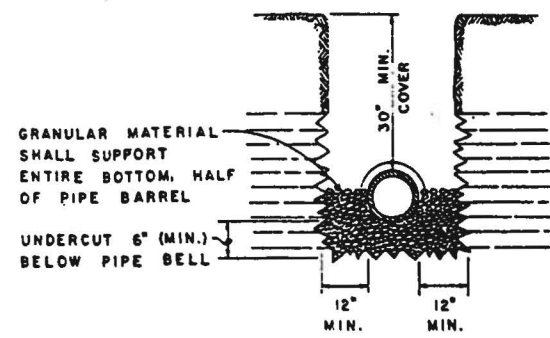
Concept WAB  
Drawn B/C  
Checked \_\_\_\_\_  
File 17-00

# NE WOODFORD WATER DISTRICT SYSTEM UPGRADE



Sheet No.  
**3**

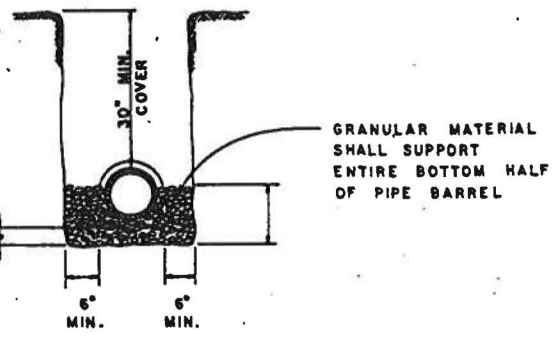




ROCK CUT

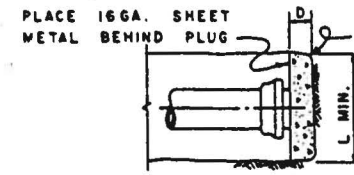
GRANULAR MATERIAL OF GRADED CRUSHED STONE, FINE GRAVEL OR SAND, APPROVED BY THE ENGINEER

UNDERCUT, 4" (MIN.) BELOW BELLS

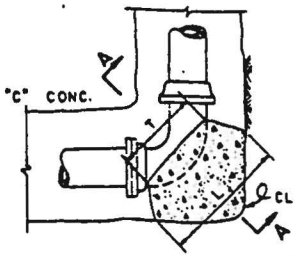


EARTH CUT

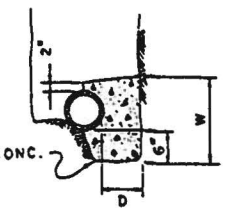
PIPE BEDDING REQUIREMENTS



PLUGS  
PLAN VIEW



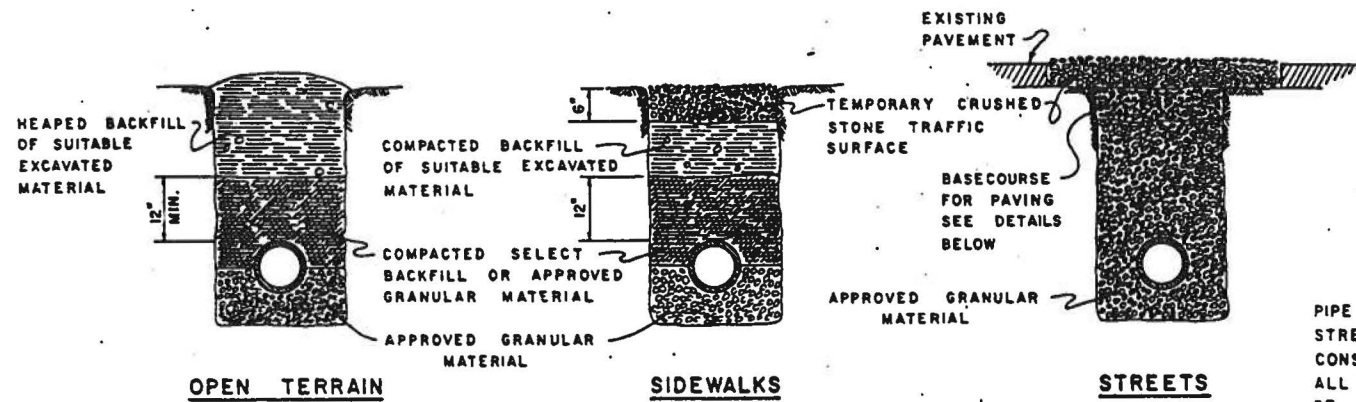
BENDS  
PLAN VIEW



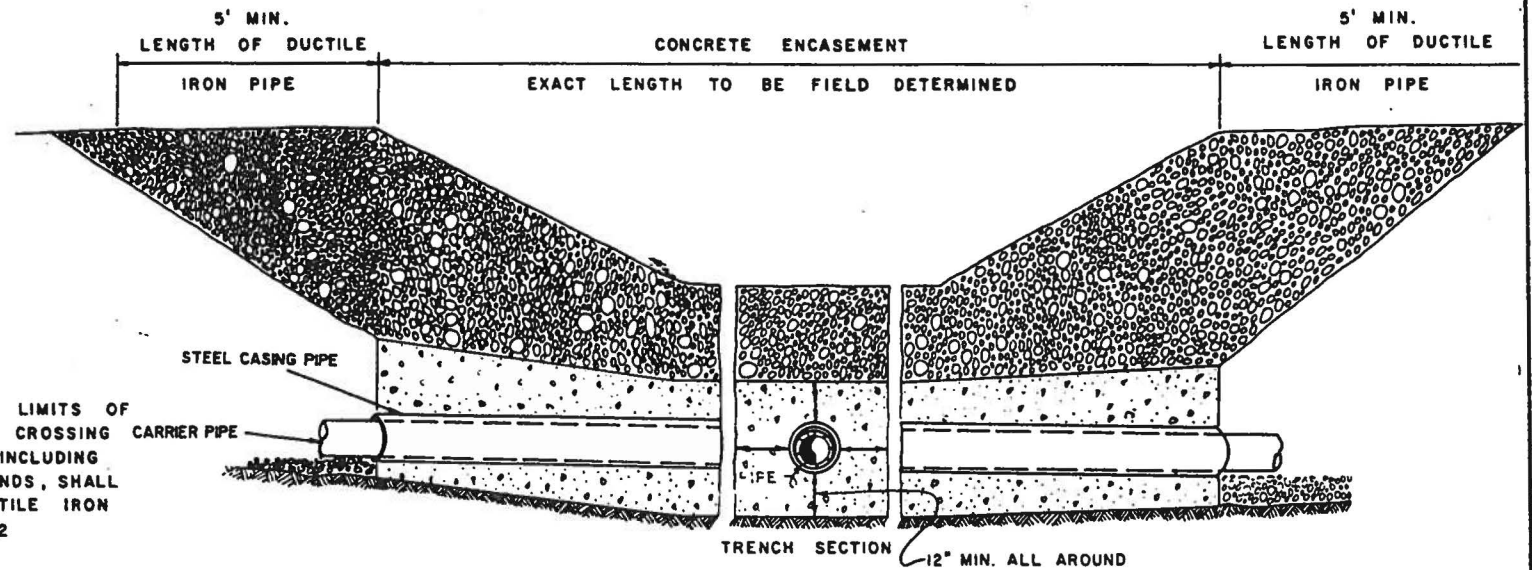
SIZE DIM.	PLUGS								45° BENDS								90° BENDS							
	6	8	10	12	16	18	20	24	6	8	10	12	16	18	20	24	6	8	10	12	16	18	20	24
D	6	6	6	6	10	12	14	18	6	6	6	6	8	8	10	8	10	8	10	12	12	16	20	20
L	20	22	24	24	32	36	40	48	18	20	22	24	34	40	45	52	24	27	30	34	48	51	54	70
T									16	16	18	18	28	33	37	46	16	18	20	22	36	40	44	50
W	20	22	24	24	32	36	40	48	12	14	16	18	22	25	28	32	12	16	20	24	28	34	40	44

DIMENSIONS GIVEN IN INCHES

THRUST BLOCKS

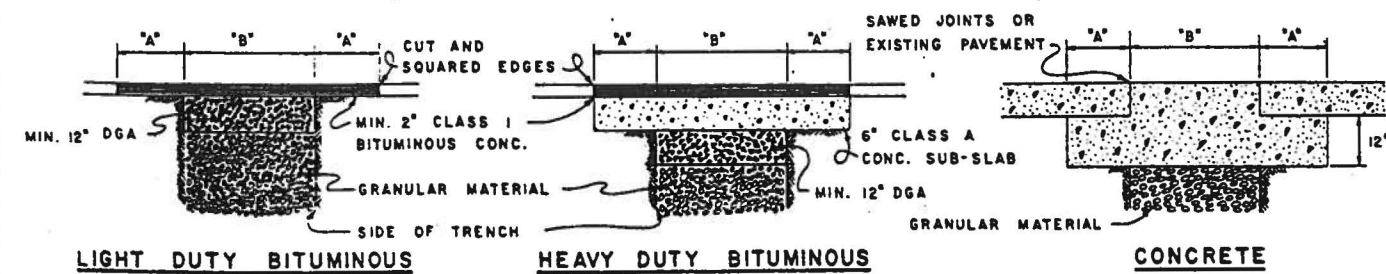


BACKFILLING



STREAM CROSSING DETAIL

NO SCALE

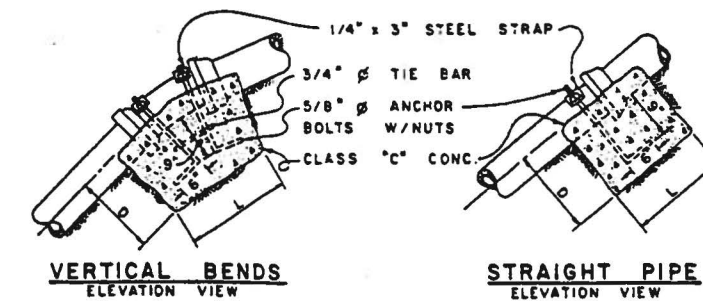


PAVEMENT RESTORATION

IF DISTANCE TO NEAREST JOINT OR BREAK IS LESS THAN 6 FEET, REMOVE EXISTING PAVEMENT TO THE JOINT OR BREAK AND RESTORE ENTIRE AREA. REPLACE WITH CONCRETE PAVEMENT THE SAME THICKNESS AS EXISTING PAVEMENT.

PIPE SIZE	MAX. PAY WIDTH SCHEDULE		WIDTH OF REPLACEMENT
	"A"	"B"	
4" THRU 12"	12"	30"	4'-6"
14" THRU 18"	12"	36"	5'-0"
20" THRU 24"	12"	42"	5'-6"
26" THRU 36"	12"	54"	6'-6"

PAY SCHEDULE

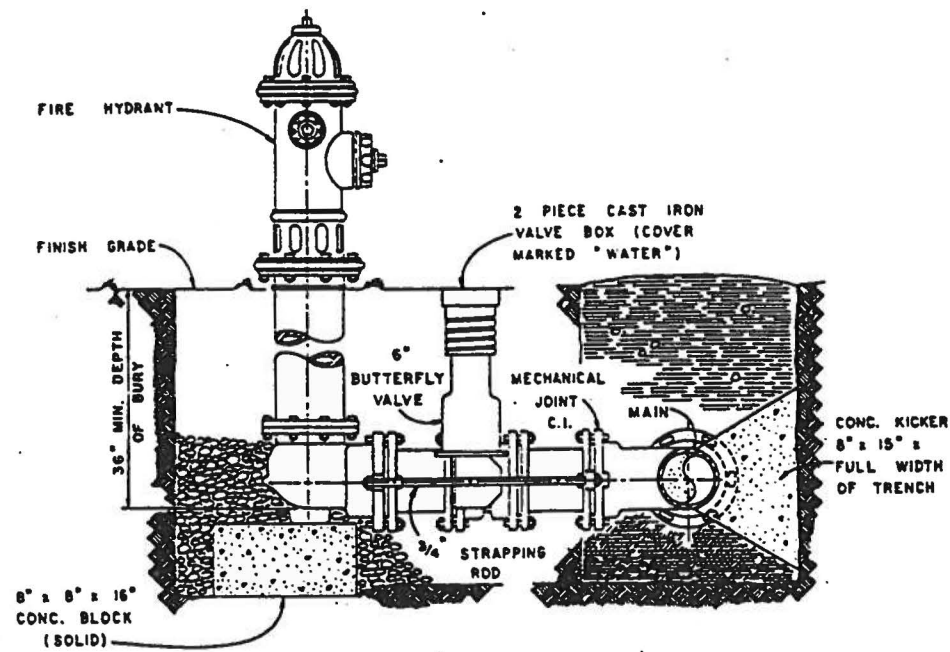


NOTE: PIERS MUST BE PLACED AGAINST UNDISTURBED EARTH. ANCHORS TO BE FULL WIDTH OF TRENCH.

SIZE	VERTICAL BEND & STRAIGHT PIPE							
	6"	8"	10"	12"	16"	18"	20"	24"
D	15"	15"	18"	18"	21"	21"	24"	24"
L	24"	24"	30"	30"	36"	36"	36"	42"

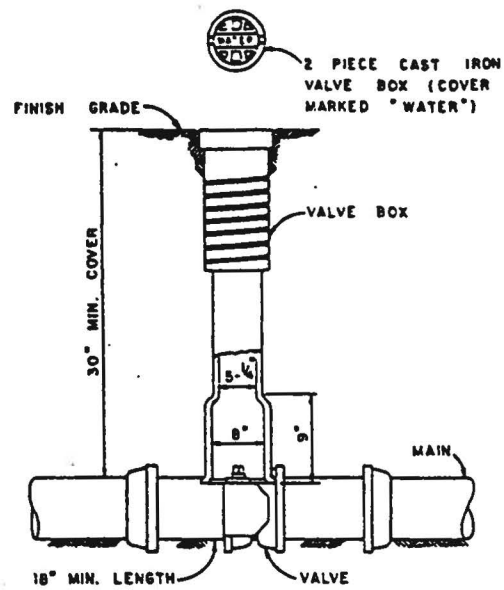
ANCHOR BLOCKS





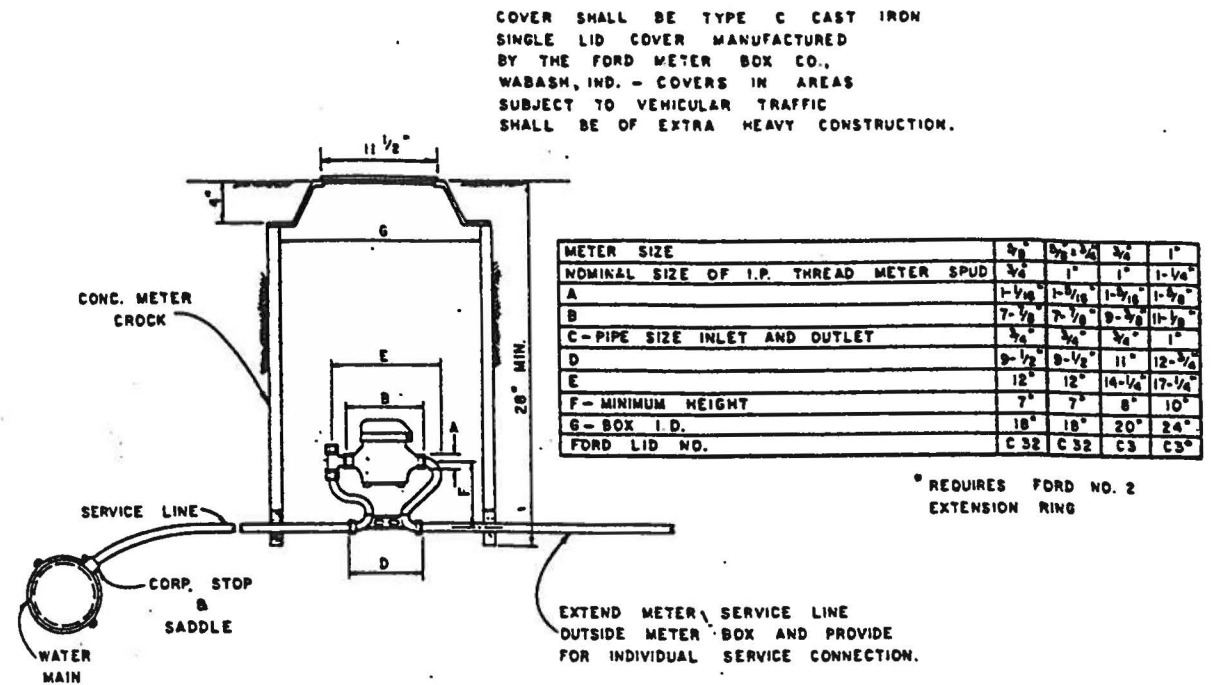
**FIRE HYDRANT INSTALLATION**

NO SCALE



**VALVE INSTALLATION**

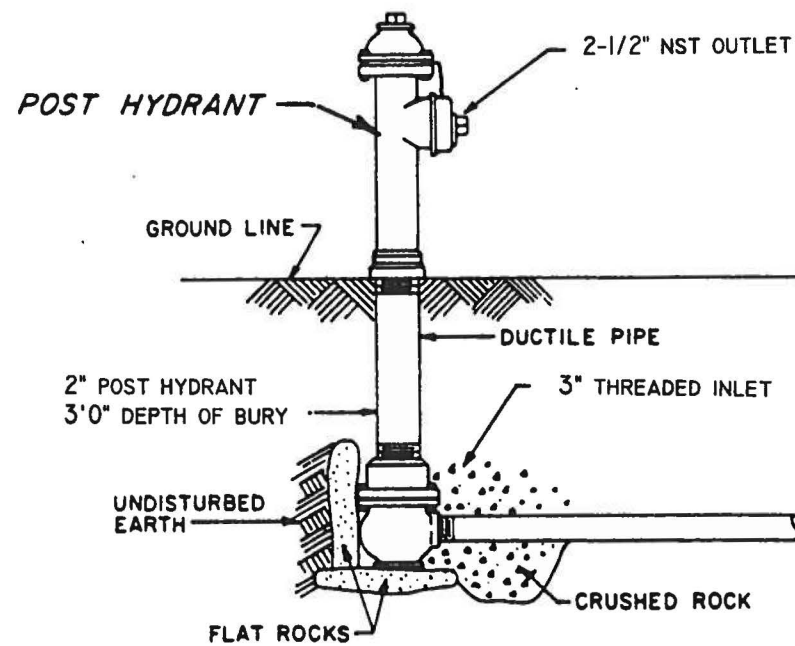
NO SCALE



**TYPICAL METER SETTING**

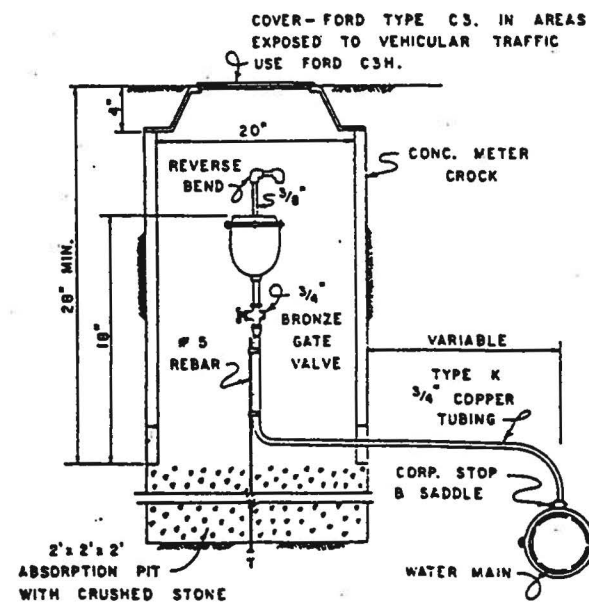
NO SCALE

\* REQUIRES FORD NO. 2 EXTENSION RING



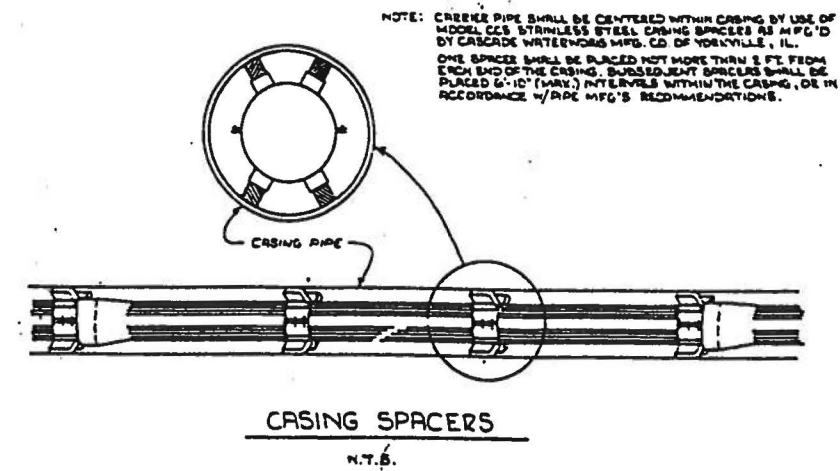
**BLOWOFF INSTALLATION**

NO SCALE



**AIR RELEASE VALVE**

NO SCALE



**CASKING SPACERS**

N.T.S.