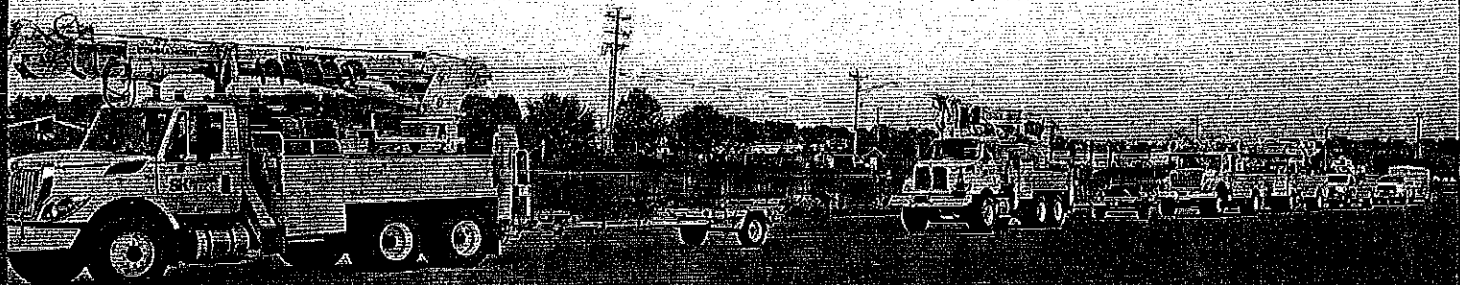


Discovering SOUTHERN KENTUCKY



Do Unto Others

South Kentucky RECC's Mutual Aid Agreements

Story & Photos by Joy Bullock

*Be the beacon of light in someone's
darkness"*

—Randi G Fine, inspirational author, speaker, counselor, and radio show host

While that quote from Randi G. Fine pertains to the human condition, South Kentucky RECC strives to be the literal "beacon of light in someone's darkness" through its mutual aid contracts with other Kentucky electric cooperatives and through Touchstone Energy.

A mutual aid contract is an agreement that SKRECC has with other co-ops that says we will provide emergency assistance in the form of personnel, equipment, materials, etc.

when they experience major outages. In turn, these co-ops will do the same if South Kentucky RECC experiences a major outage situation.

The most recent event for which South Kentucky RECC provided aid was in September when the co-op sent three, four-man crews to Coastal Electric Cooperative, in Midway, Georgia, to aid with restoration following Hurricane Irma.

Coastal Electric CEO Whit Hollowell says the assistance from mutual aid contracts is very welcome.

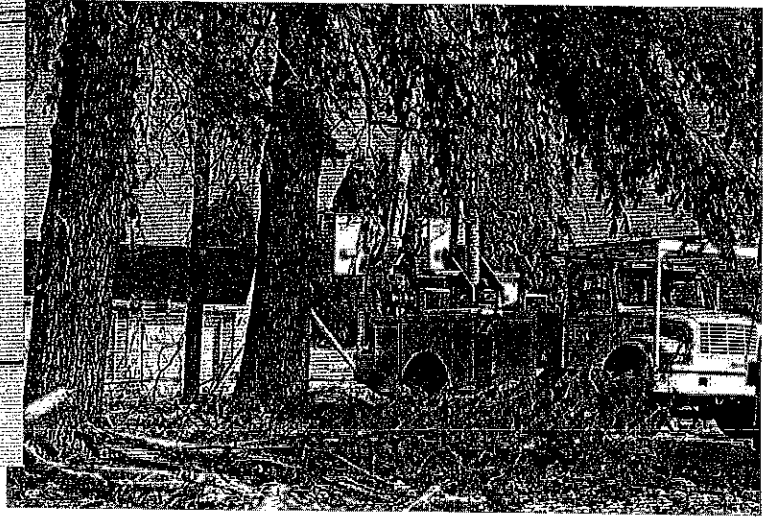
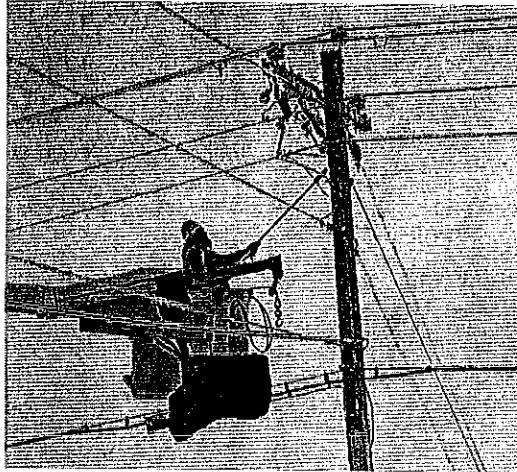
"Cooperation among coopera-

Above, South Kentucky RECC crews and equipment lined up to go to Coastal Electric Cooperative in September after that co-op suffered major damage from Hurricane Irma.

tives is alive and well. People all across Coastal Georgia benefitted from hard work and dedication as they partnered with us to restore our system."

The most notable example for mutual aid contracts and their benefits was the extreme ice storm that Kentucky endured in 2009. At that time, with the majority of the state without electric, more than 1,100 electric co-op employees from Alabama, Florida, Georgia, Illinois, Indiana, Michigan, Minnesota, Mississippi, North Carolina, Ohio, Pennsylvania, South Carolina, Tennessee, and Virginia assisted with restoration efforts. An equal number of contract

Bullock No. 6208
EXHIBIT
"2"



labor was also employed and in force assisting. In addition, South Kentucky RECC, one of only a couple of co-ops not greatly affected by the storm, sent crews to assist neighboring co-ops, which had most of their systems without power.

South Kentucky RECC Interim CEO Dennis Holt says the co-op was fortunate that it wasn't affected greatly, but he adds that we never know when it might strike our system.

"One of the greatest benefits of being a Touchstone Energy Cooperative is the aid that we can get from our sister cooperatives when the need arises. We have been very fortunate for a number of years that we haven't had a devastating, weather-related outage on our system. That could change this winter.

"While a number of the co-ops that we have provided assistance for over the past couple of years have had outages due to hurricanes, our biggest threat in Kentucky is ice. Kentucky is located in the portion of the United States that is usually on the fringe of winter storms, which means it is more susceptible to ice, as shown in the storm of 2009. When you get a great deal of ice laying heavily on power lines or tree limbs, that can spell disaster to a co-op."

Holt adds that South Kentucky RECC, as a cooperative, adheres to the seven cooperative principles; one of which is 'Cooperation Among Cooperatives.'

"I don't know of any better way to show our cooperation than by assisting a co-op that is trying to restore power following a major outage," says Holt. "Another cooperative principle is 'Concern for Community.' When it comes right down to it, we are all community, and we need to help our neighbors." **DSK**

In 2009, when a major ice storm crippled most of Kentucky without affecting SKRECC, crews went to Inter-County Energy, Danville, to assist. In both photos, crews are working in the Perryville area to restore power.

South Kentucky RECC members can now receive discounts with three area air ambulance services:

Air Evac, Air Methods, and PHI.

Applications for all three air ambulance services are available at all South Kentucky RECC offices.

For more information and pricing, contact:

Air Evac Lifecare (part of the AirMedCare Network)

Dorothy Smith, Membership Sales Manager

(606) 306-7705 or by email:

dorothysmith@airmedcarenetwork.com

Visit their website at: [www.AM\(CN\)RECC.com](http://www.AM(CN)RECC.com)

Air Methods Advantage

(855) 877-2518 or by email:

airmethodsadvantage@airmethods.com

Visit their website at: www.airmethodsadvantage.com

PHI Air Medical

Chandra Younger, National Membership Representative

(859) 608-0029 or by email: cyounger@philico.com

Visit their website at: www.phiairmedical.com

• South Kentucky RECC cannot guarantee that the air ambulance you have membership with will be the one used in the event of an emergency.

People Fund Drive Winner

Visit www.skrecc.com to pay your bill online, to visit our outage center, or for more information about the Co-op Connections Program or our energy-efficiency programs.

The address for the new Somerset headquarters is:
200 Electric Avenue
Somerset, KY 42501

Editor
Joy Bullock

Interim President & CEO
Dennis Holt

Board of Directors
Greg Redmon, Chairperson
Cathy Crew Epperson, Vice Chairperson
Greg Beard, Secretary/Treasurer
Billy Gene Hurd
Boris Haynes
Rick Halloran
Brent Tackett

Through the month of September, South Kentucky RECC placed special emphasis on the co-op's People Fund.

The People Fund was started in 2004. It allows SKRECC members to "round up" their monthly bills to the nearest dollar, with that change being used to create a system of grants available to organizations in our local communities whose financial needs are not being met by other agencies or resources. To date, more than \$225,000 has been distributed in nearly 400 grants to organizations/groups, including local schools, food banks, and many other

organizations. The most that rounding up can cost any member in a year is \$11.88, or \$.99 each month.

As part of the emphasis, any South Kentucky RECC member that registered their account for People Fund was included in a drawing for \$250, which was anonymously donated and did not come from the co-op or People Fund, and two University of Kentucky versus University of Tennessee football tickets for October 28.

For more information on the People Fund, contact your local office or visit www.skrecc.com.



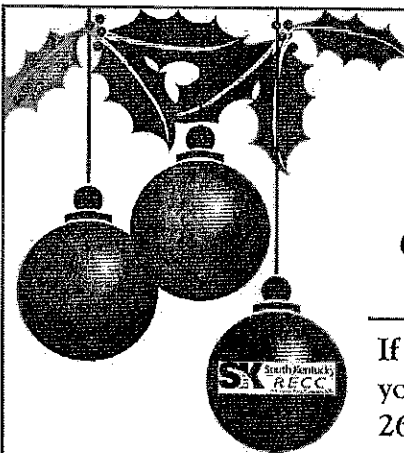
South Kentucky RECC member Gordon Hicks, center, Wayne County, accepts his prize from left, SKRECC System Inspector and Chairman of the People Fund Don Bethel and, right, Interim SKRECC CEO Dennis Holt.

DISCOVERING SOUTHERN KENTUCKY is a supplement to *Kentucky Living* magazine and is published by the Kentucky Association of Electric Cooperatives, Louisville, KY, and by South Kentucky Rural Electric Cooperative Corporation, P.O. Box 910, Somerset, KY 42502, (606) 678-4121 with offices in: Albany (606) 387-6476; Monticello (606) 348-6771; Russell Springs (270) 343-7500; Whitley City (606) 376-5997.

DISCOVERING SOUTHERN KENTUCKY assumes no responsibility for unsolicited material. Manuscripts, photographs, and artwork must be accompanied by self-addressed envelopes with sufficient postage to be returned. DISCOVERING SOUTHERN KENTUCKY does not guarantee the publication of any material received and reserves the right to edit any material published.

Address all correspondence to: DISCOVERING SOUTHERN KENTUCKY, P.O. Box 910, Somerset, Kentucky 42502.

South Kentucky RECC is an equal opportunity employer and provider.



The offices of South Kentucky RECC will be CLOSED on Monday, December 25, and Tuesday, December 26, for Christmas. Offices will also be CLOSED on Monday, January 1, for New Year's.

If you have an emergency, please call your local office number or (800) 264-5112 for 24-hour dispatch. You can pay your bill by phone, online at www.skrecc.com, or download our mobile app SKRECC.

*From our family to yours
Merry Christmas &
Happy New Year!*

Weathering Winter Storms Safely

Winter storms can bring bitterly cold temperatures, high winds, and even ice and snow. Such weather can cause hazardous road conditions, downed power lines, and extended power outages. South Kentucky RECC shares tips on preparing for and safely weathering winter storms.

Before a storm ever begins, tune into your local weather service for the weather forecast. It is important to know the differences among various watches and warnings.

- Winter Storm Watches signify that stormy conditions, including heavy snow, freezing rain or sleet, are a possibility within the next few days.
- Winter Storm Warnings call for stormy conditions to begin within the next 24 hours.
- Blizzard Warnings advise those in the affected areas to seek refuge immediately due to high levels of snow, strong winds and resulting near-zero visibility to those traveling on the road.

"Heavy snow and accumulating ice can easily bring tree limbs down onto power lines, cutting off power to homes and businesses," says Dennis Holt, South Kentucky RECC Interim CEO.

If power lines go down because of a winter storm and the electricity goes out, first notify the co-op of the outage.

Have an emergency kit prepared for your home before a storm strikes to help you and your family weather the storm and the outage safely and comfortably. Some of the items this kit should include are bottled water, non-perishable food, flashlights, a weather radio and extra batteries.

If you are using an alternative heating source during a power outage, be sure to know how to use it safely and that you have all supplies for it gathered. To help you and your family stay warm during an outage, dress warmly, cover windows at night, close off unneeded rooms, and place draft blocks at the bottom of doors.

When the power is restored, there will be a power surge. To protect your circuits and appliances, switch off lights and unplug appliances. Leave one light

switched on as a quick reminder that the power is restored.

Due to the potential for a winter storm to bring down power lines, individuals should only venture outside if absolutely necessary. Downed power lines could be submerged in snow and



ice, making them difficult to see. Therefore, stay indoors if possible. If you must go outside, use caution and treat all downed and hanging lines as if they are energized. Stay away, warn others to stay away, and immediately contact South Kentucky RECC or 911.

"A power line does not need to be sparking or arcing to be energized," Holt says. "It's best to assume all low and downed lines are energized and dangerous. Lines that appear to be dead can become energized as crews work to restore power, or sometimes from improper use of emergency generators."

If travel is necessary, be especially cautious driving, and keep an emergency kit in your vehicle. Kit supplies should include a windshield scraper, a first aid kit, a cell phone charging adaptor, booster cables, a blanket and a flashlight with extra batteries.

Never drive over a downed line because that could pull down the pole and other equipment, causing additional hazards. If you see a downed line, do not get out of your car. The safest place is inside the vehicle. Contact SKRECC immediately.

Many SKRECC members are in

households that have someone who needs some type of life support system, such as oxygen. Should you be part of such a household, it is important that you have an emergency plan in place in the event of a major outage. While South Kentucky RECC does all it can, including utilizing contract labor and support labor from sister co-operatives, there may be instances that power cannot be restored for several hours, or even days. Members requiring life support need to be prepared to go somewhere that has electricity to sustain equipment.

Outages are an unwanted part of winter weather; however, be assured that South Kentucky RECC does all it can to provide the best possible service to its members and is prepared for all types of weather and the situations that come with it.

Keep your local South Kentucky RECC office number or (800) 264-5112 in your phone contacts or nearby to report an outage.

For more information on outages, energy-efficiency programs, and to keep up with the changes and happenings of the co-op, follow South Kentucky RECC on

facebook

twitter