

STATE OF KENTUCKY
 MARK A. SNEVE
 18511
 8/15/17

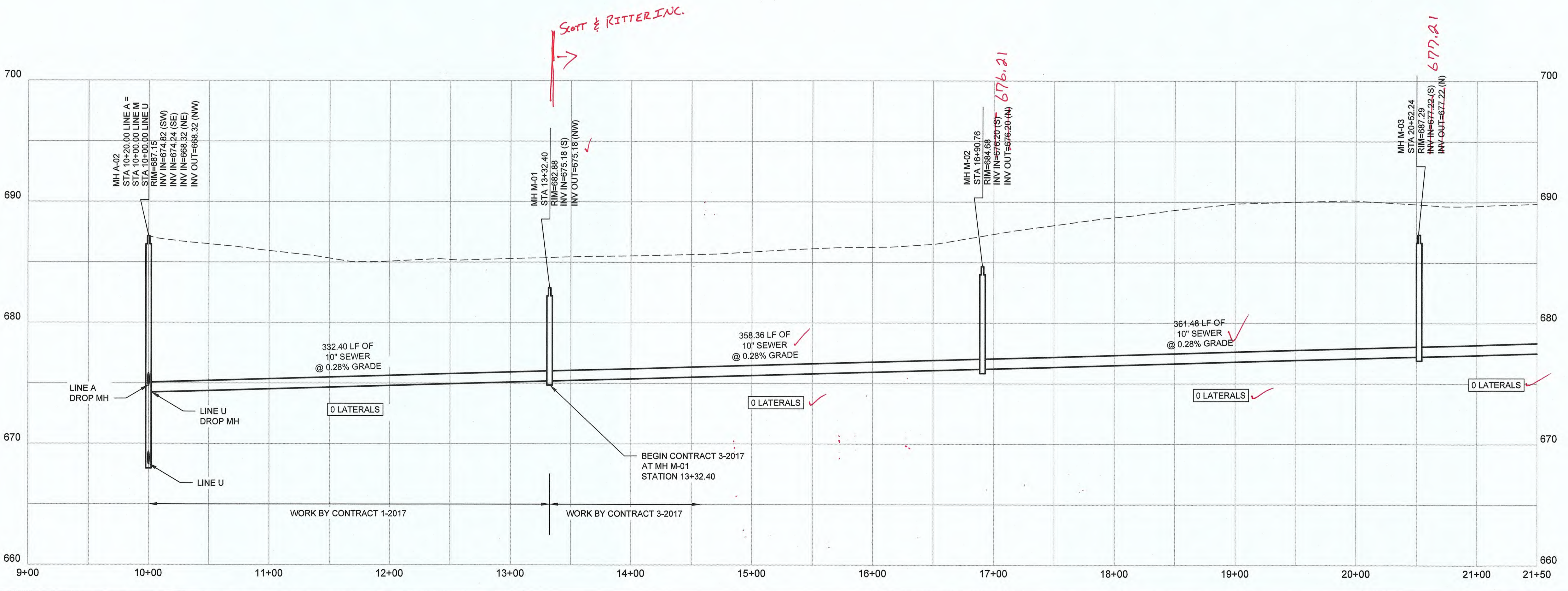
DATE:	NO.	REVISIONS

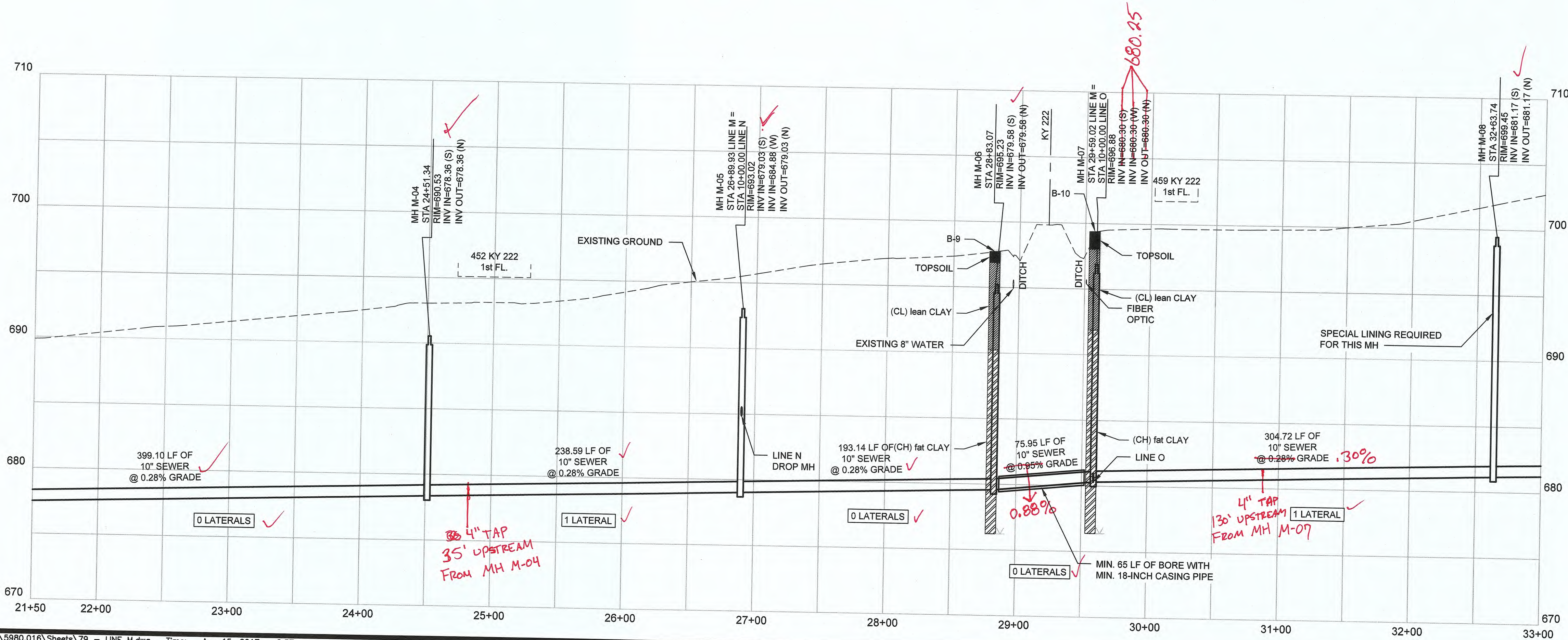
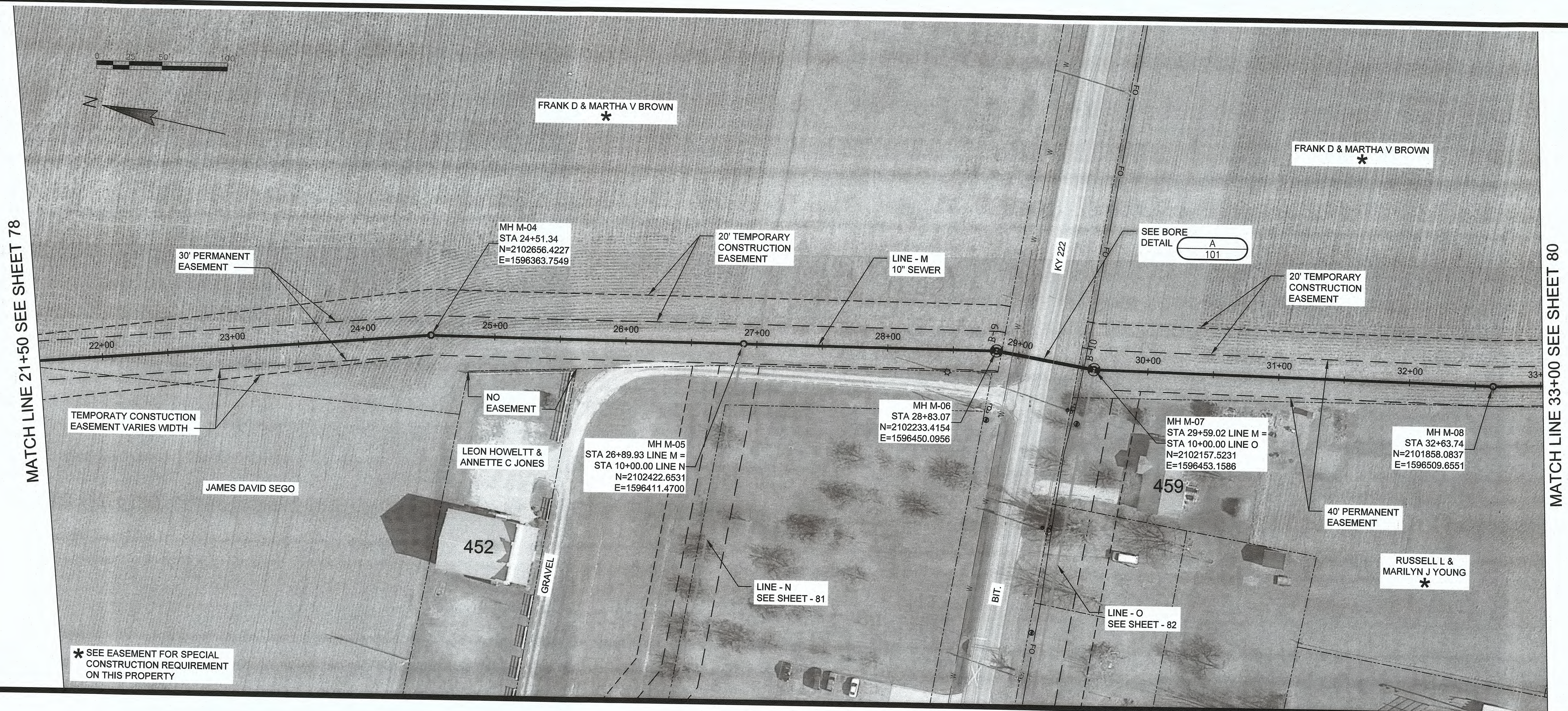
GRAVITY SEWER PLAN AND PROFILE
 LINE M STA. 10+00 TO STA. 21+50
 CONTRACT 3-2017
 NOLIN RIVER WATERSHED SEWER INFRASTRUCTURE
 HARDIN COUNTY WATER DISTRICT NO. 2
 HARDIN COUNTY, KENTUCKY

JOB NO.
 5980.020
 PROJECT MGR.
 MAS



SHEET
 78





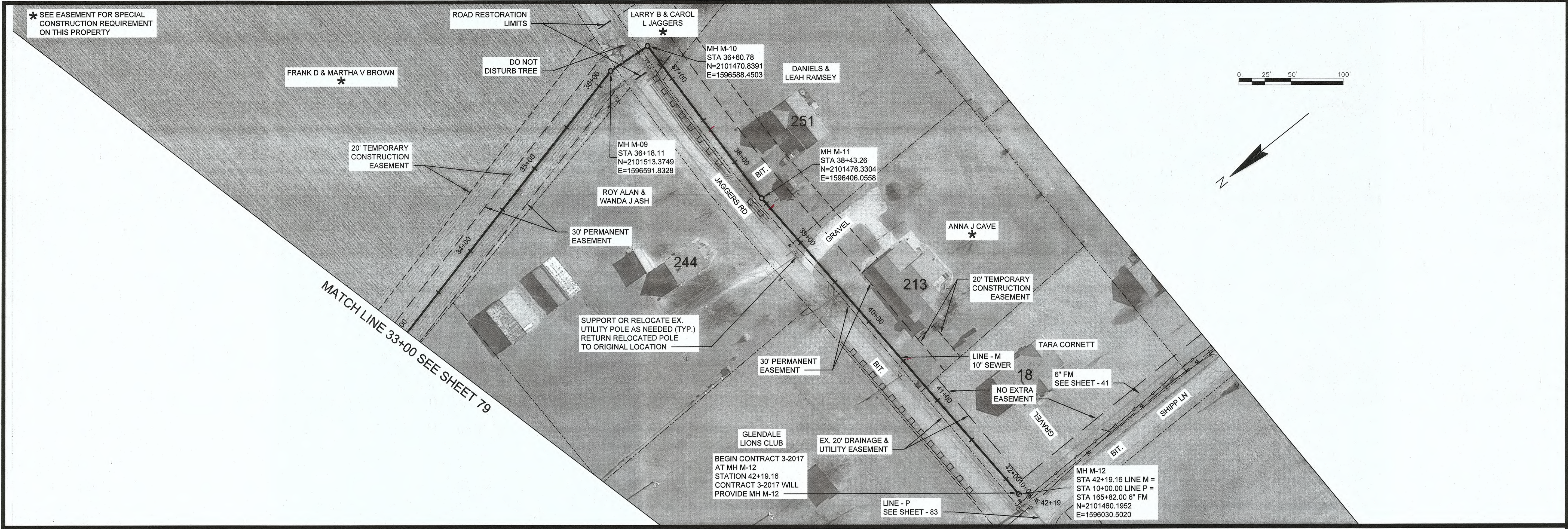
NO.	REVISIONS	DATE:

GRAVITY SEWER PLAN AND PROFILE
LINE M STA. 21+50 TO STA. 33+00
CONTRACT 3-2017
 NOLIN RIVER WATERSHED SEWER INFRASTRUCTURE
 HARDIN COUNTY WATER DISTRICT NO. 2
 HARDIN COUNTY, KENTUCKY

JOB NO.
5980.020
PROJECT MGR.
MAS



SHEET
79

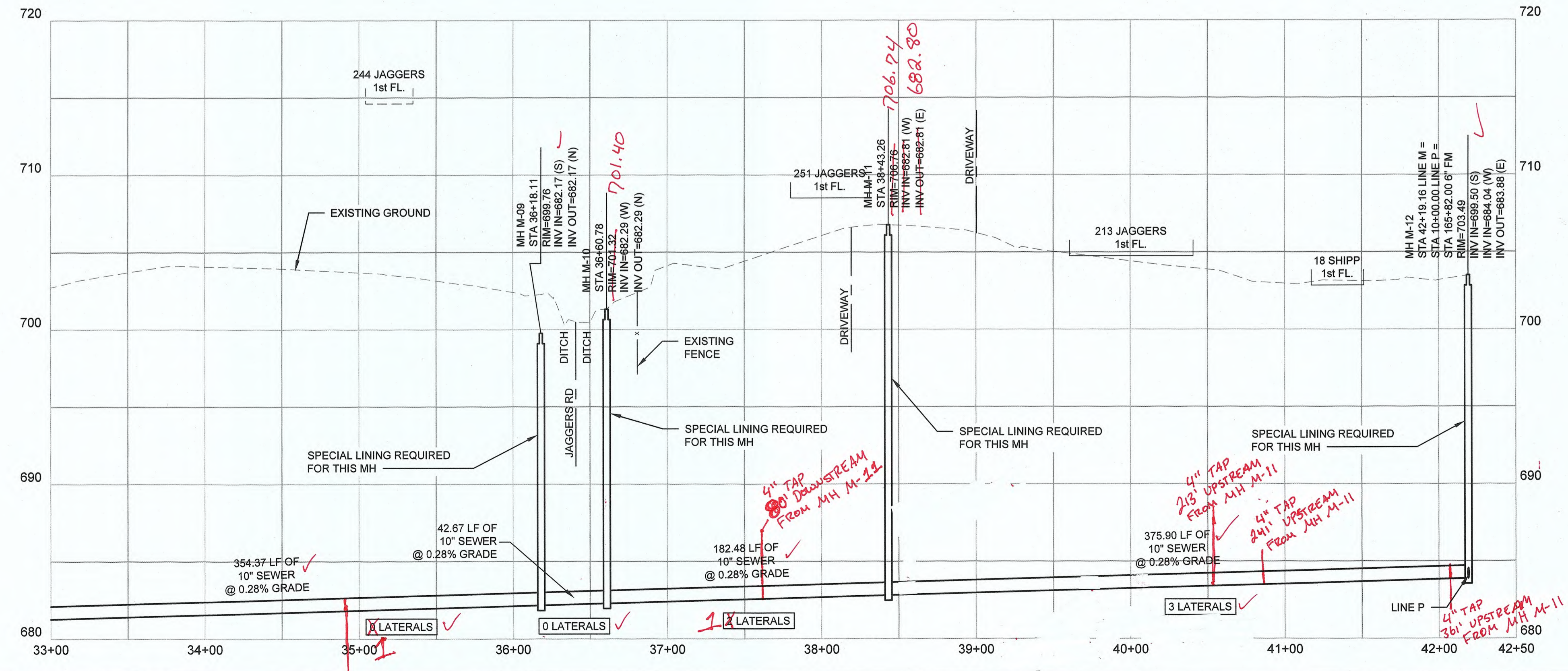


DATE	REVISIONS	NO.

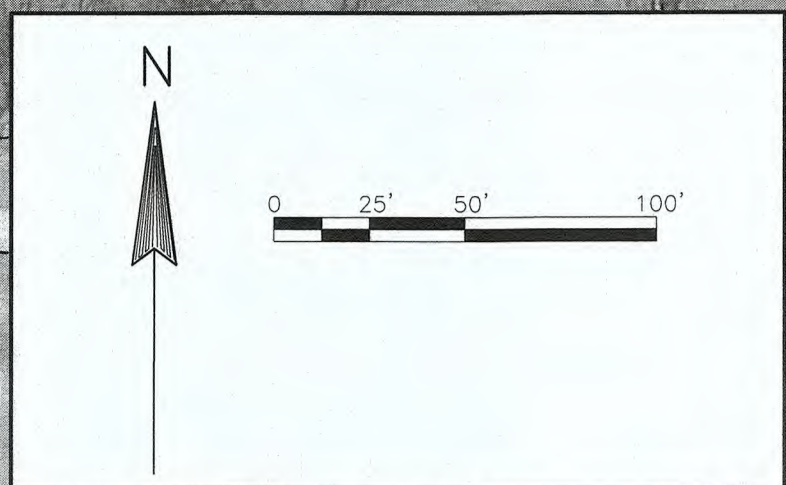
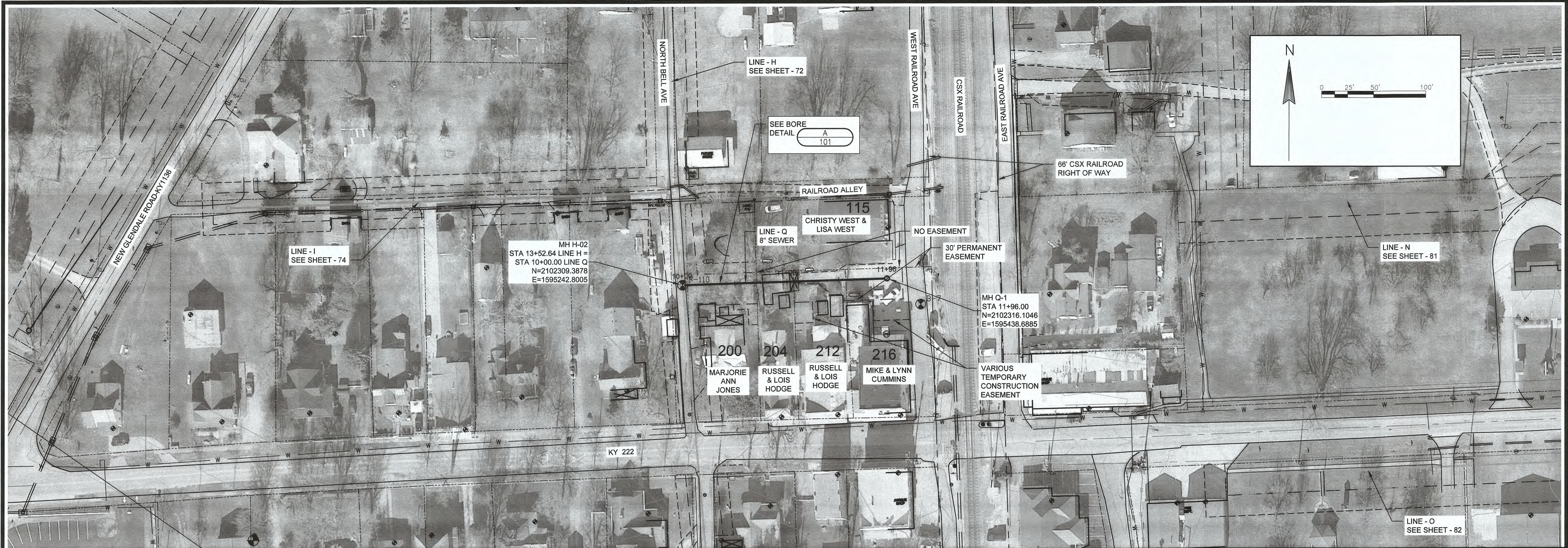
GRAVITY SEWER PLAN AND PROFILE
LINE M STA. 33+00 TO STA. 42+19.16
CONTRACT 3-2017
 NOLIN RIVER WATERSHED SEWER INFRASTRUCTURE
 HARDIN COUNTY WATER DISTRICT NO. 2
 HARDIN COUNTY, KENTUCKY

JOB NO.
 5980.020
PROJECT MGR.
 MAS

STRAND ASSOCIATES
SHEET
 80



*4" TAP
285' UPSTREAM
FROM MH M-08*



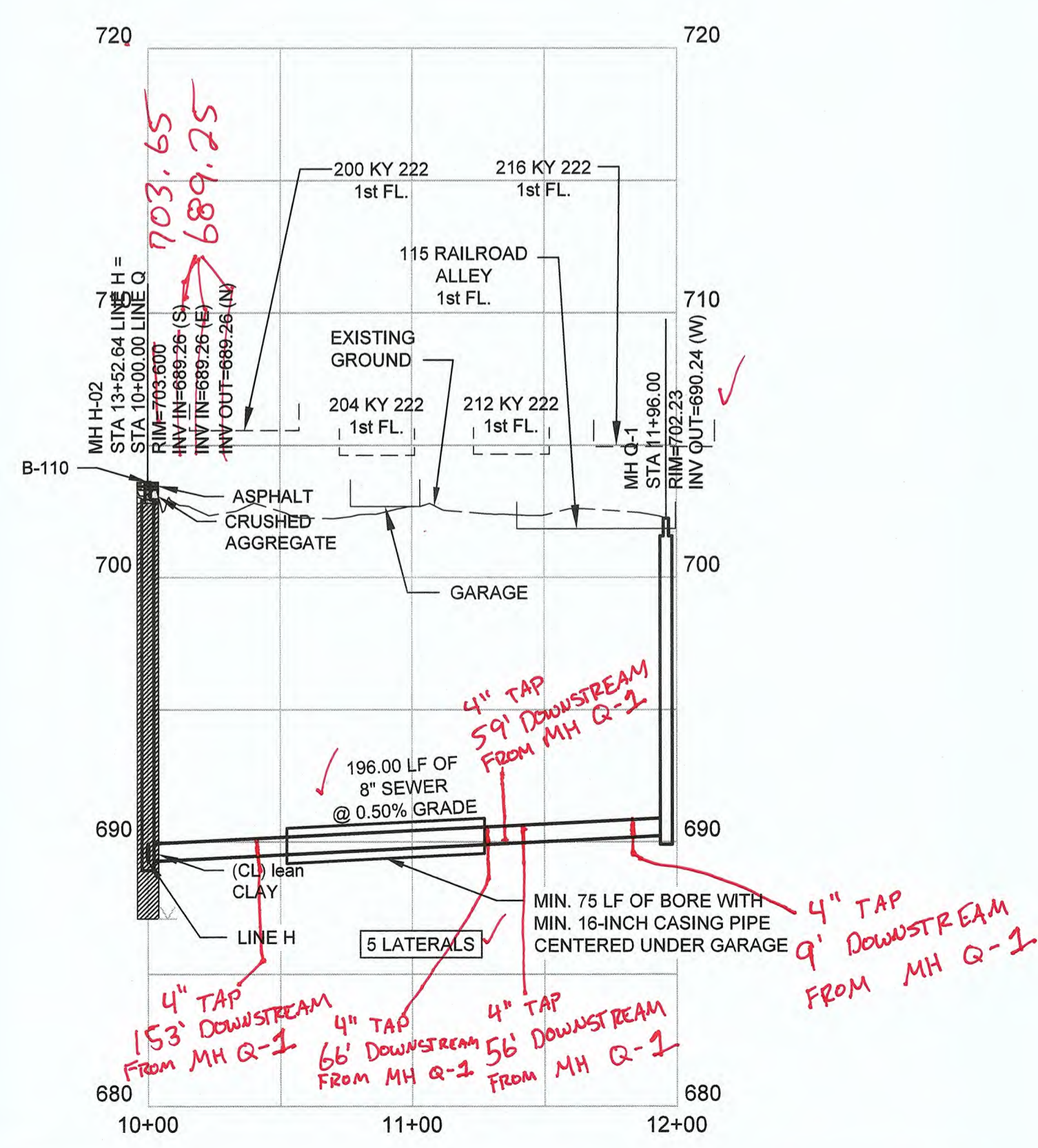
DATE:

NO.:

NO.	REVISIONS

GRAVITY SEWER PLAN AND PROFILE
LINE Q STA. 10+00 TO STA. 11+96.00
CONTRACT 3-2017

NOLIN RIVER WATERSHED SEWER INFRASTRUCTURE
HARDIN COUNTY WATER DISTRICT NO. 2
HARDIN COUNTY, KENTUCKY

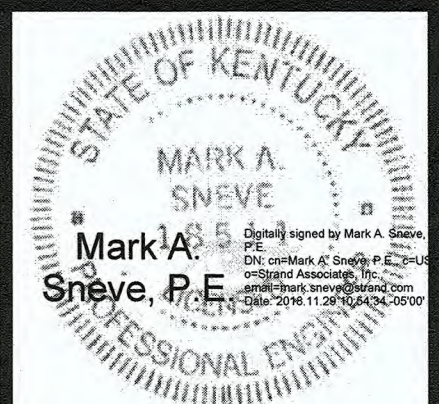
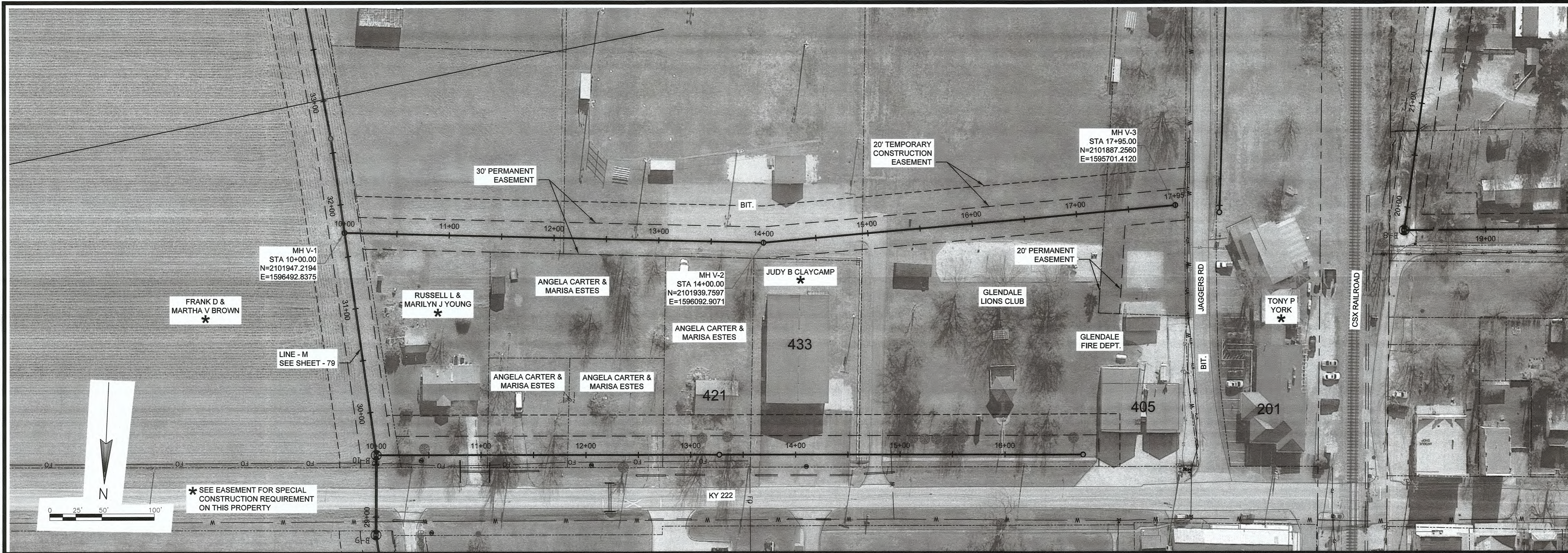


JOB NO.
5980.020

PROJECT MGR.
MAS

STRAND ASSOCIATES®

SHEET
84



NO.	REVISIONS

GRAVITY SEWER PLAN AND PROFILE
LINE V STA. 10+00 TO STA. 17+95.00
ALTERNATIVE CONTRACT
 NOLIN RIVER WATERSHED SEWER INFRASTRUCTURE
 HARDIN COUNTY WATER DISTRICT NO. 2
 HARDIN COUNTY, KENTUCKY

JOB NO.
5980.020
PROJECT MGR.
MAS



SHEET
113

