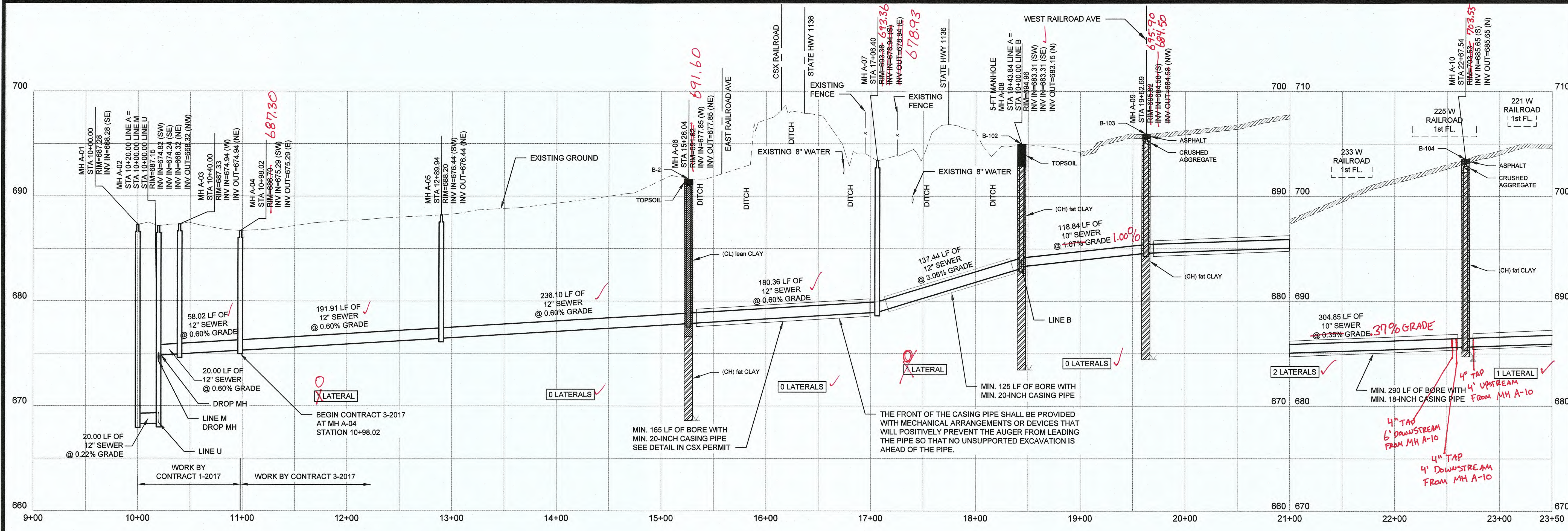


STATE OF KENTUCKY
 MARK A. SNEVE
 18511
 8/15/17

NO.	REVISIONS	DATE

GRAVITY SEWER PLAN AND PROFILE
LINE A STA. 10+00 TO STA. 23+50
CONTRACT 3-2017

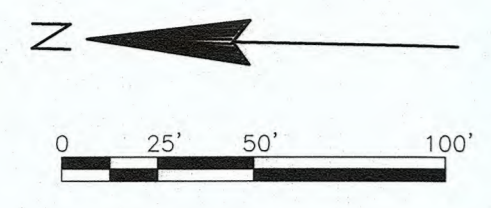
NOLIN RIVER WATERSHED SEWER INFRASTRUCTURE
 HARDIN COUNTY WATER DISTRICT NO. 2
 HARDIN COUNTY, KENTUCKY



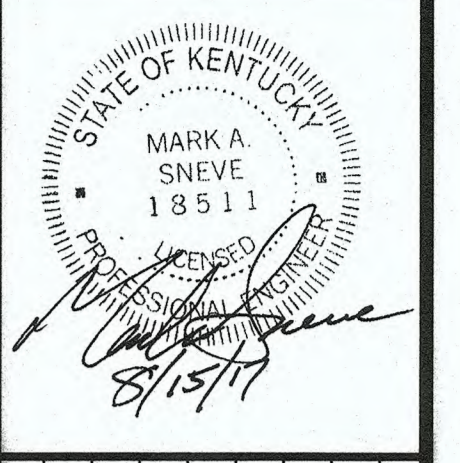
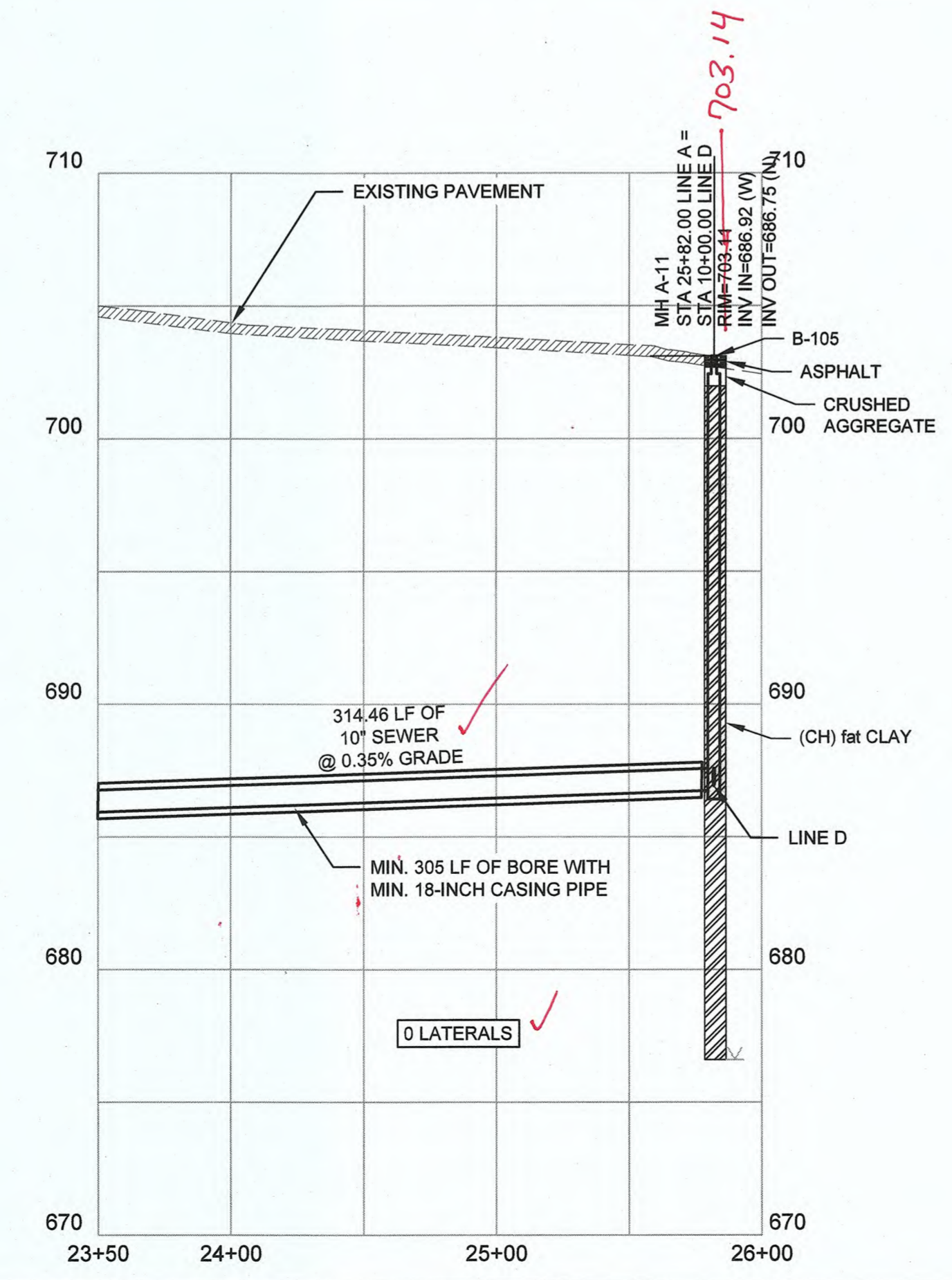
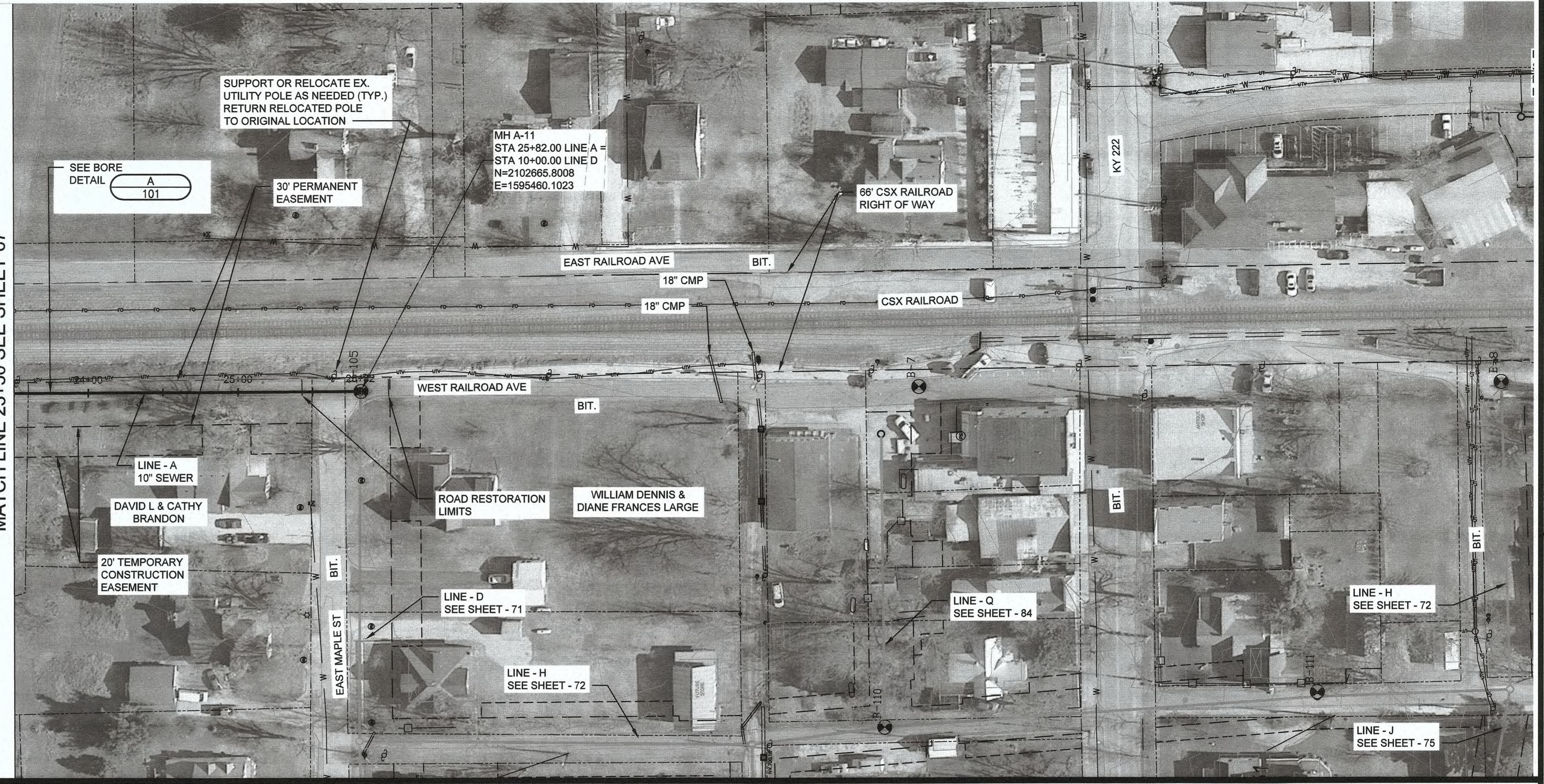
JOB NO.
 5980.020
 PROJECT MGR.
 MAS



SHEET
 67



MATCH LINE 23+50 SEE SHEET 67



NO.	REVISIONS	DATE:

GRAVITY SEWER PLAN AND PROFILE
LINE A STA. 23+50 TO STA. 25+82.00
CONTRACT 3-2017

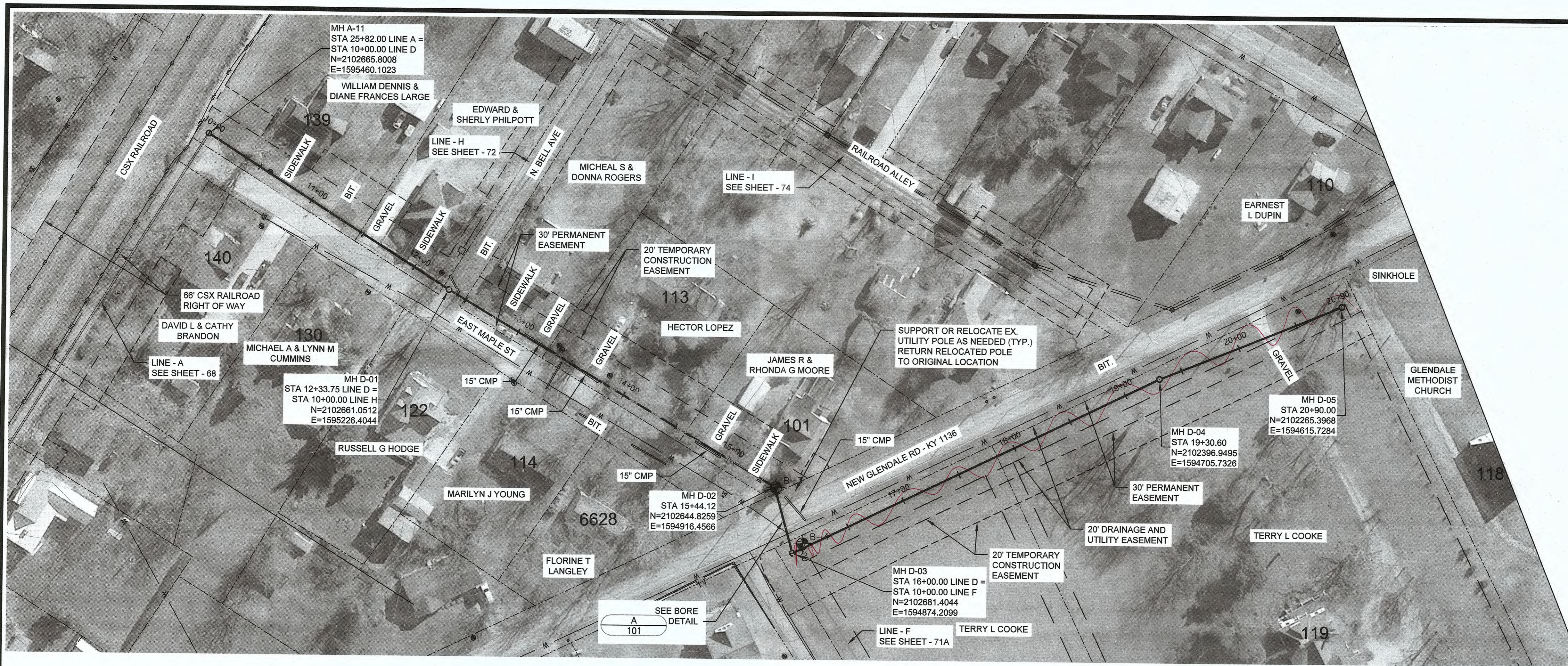
NOLIN RIVER WATERSHED SEWER INFRASTRUCTURE
 HARDIN COUNTY WATER DISTRICT NO. 2
 HARDIN COUNTY, KENTUCKY

JOB NO.
5980.020

PROJECT MGR.
MAS



SHEET
68



NO.	REVISIONS	DATE

GRAVITY SEWER PLAN AND PROFILE
LINE D STA. 10+00 TO STA. 20+90.00
CONTRACT 3-2017

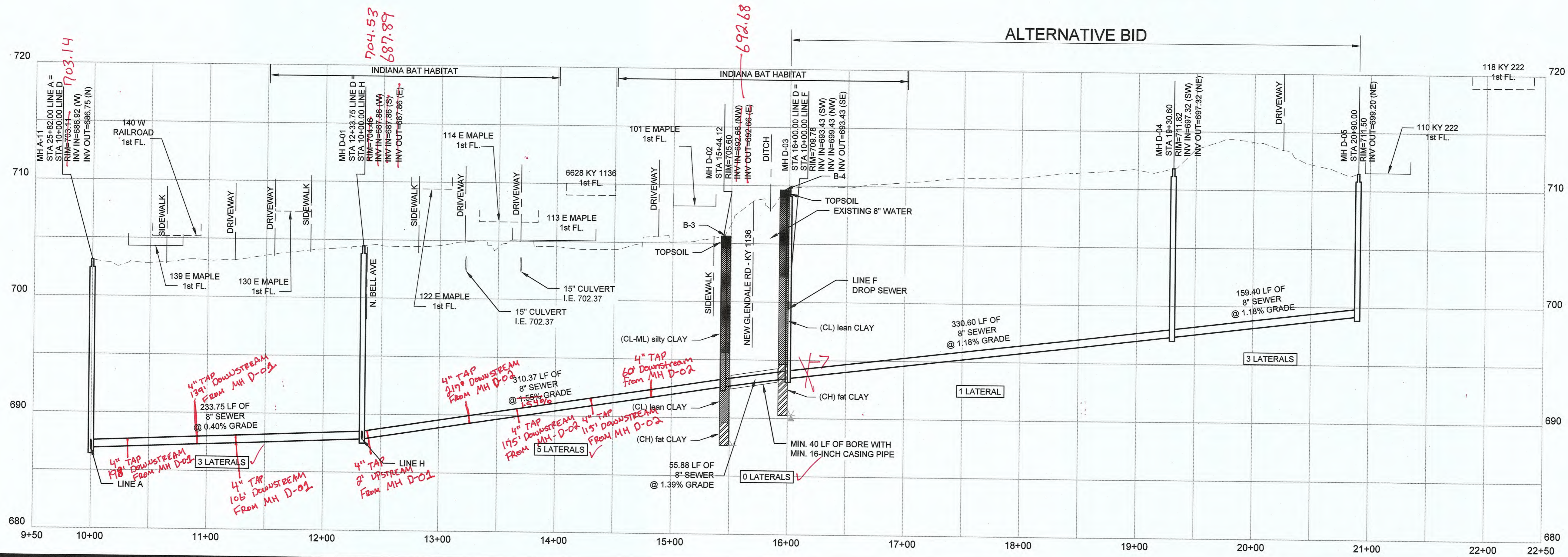
NOLIN RIVER WATERSHED SEWER INFRASTRUCTURE
 HARDIN COUNTY WATER DISTRICT NO. 2
 HARDIN COUNTY, KENTUCKY

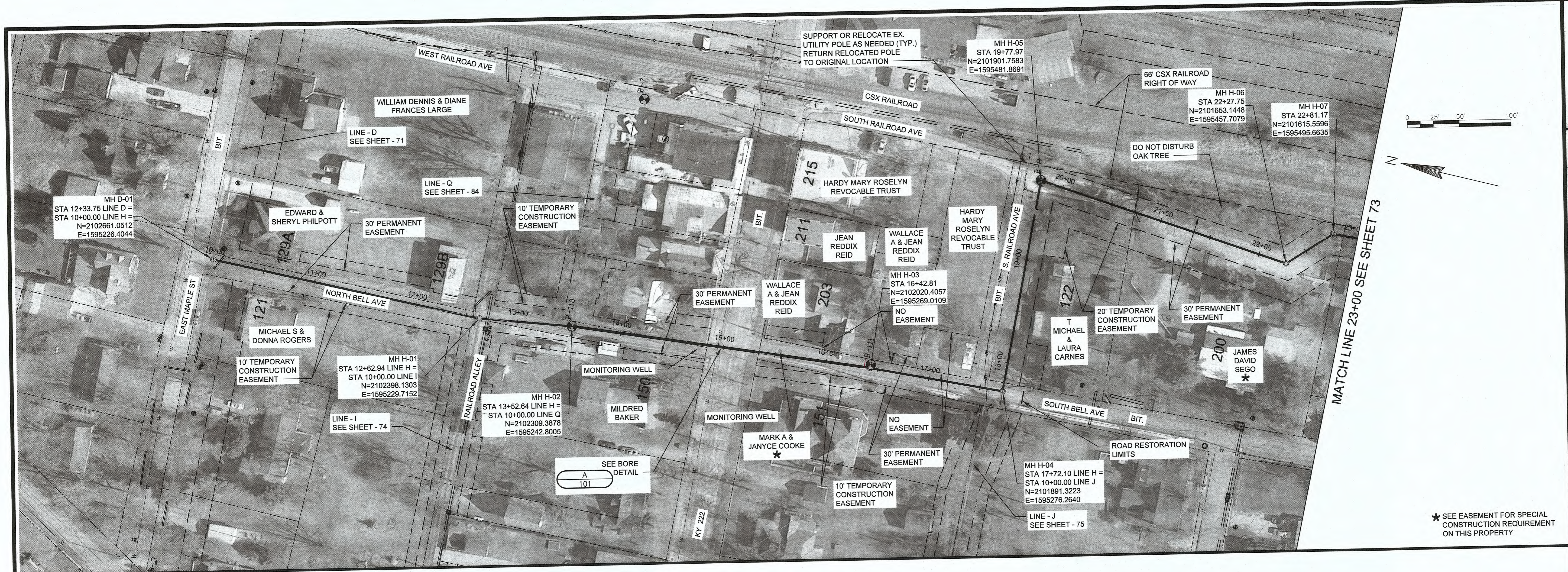
JOB NO.
5980.020

PROJECT MGR.
MAS



SHEET
71



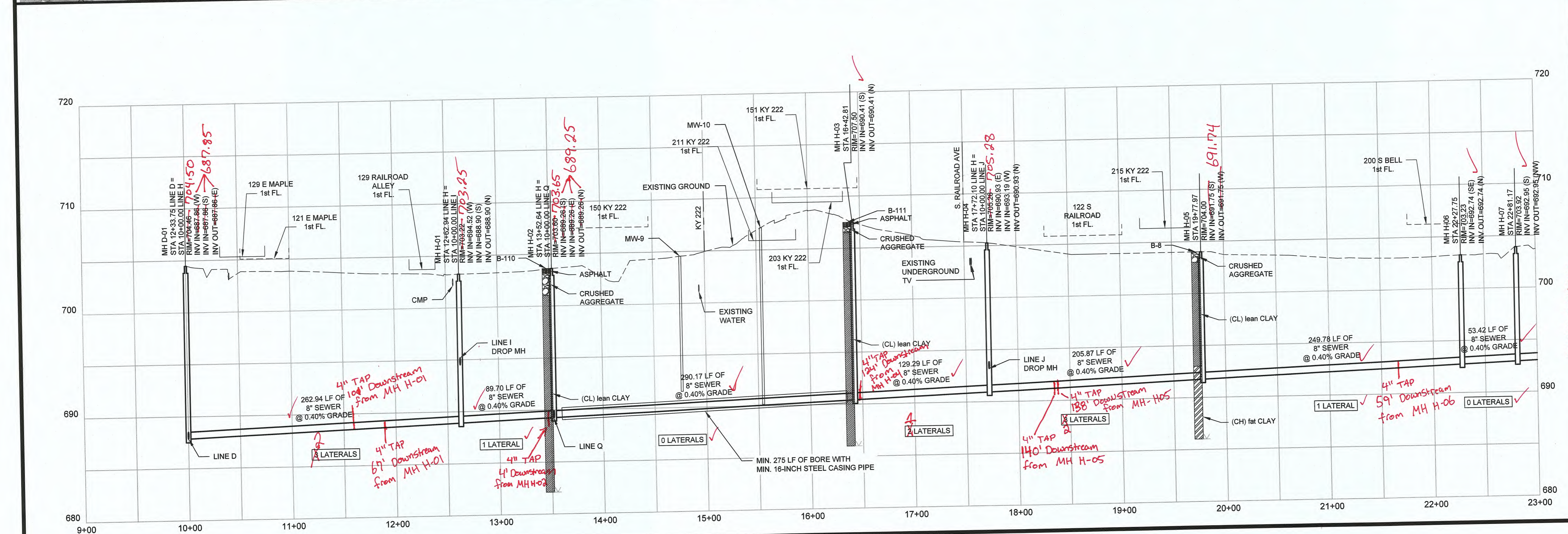


DATE: _____

NO. _____

REVISIONS

SEE EASEMENT FOR SPECIAL CONSTRUCTION REQUIREMENT ON THIS PROPERTY



GRAVITY SEWER PLAN AND PROFILE
LINE H STA. 10+00 TO STA. 23+00
CONTRACT 3-2017

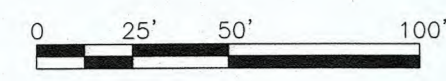
NOLIN RIVER WATERSHED SEWER INFRASTRUCTURE
 HARDIN COUNTY WATER DISTRICT NO. 2
 HARDIN COUNTY, KENTUCKY

JOB NO.
5980.020

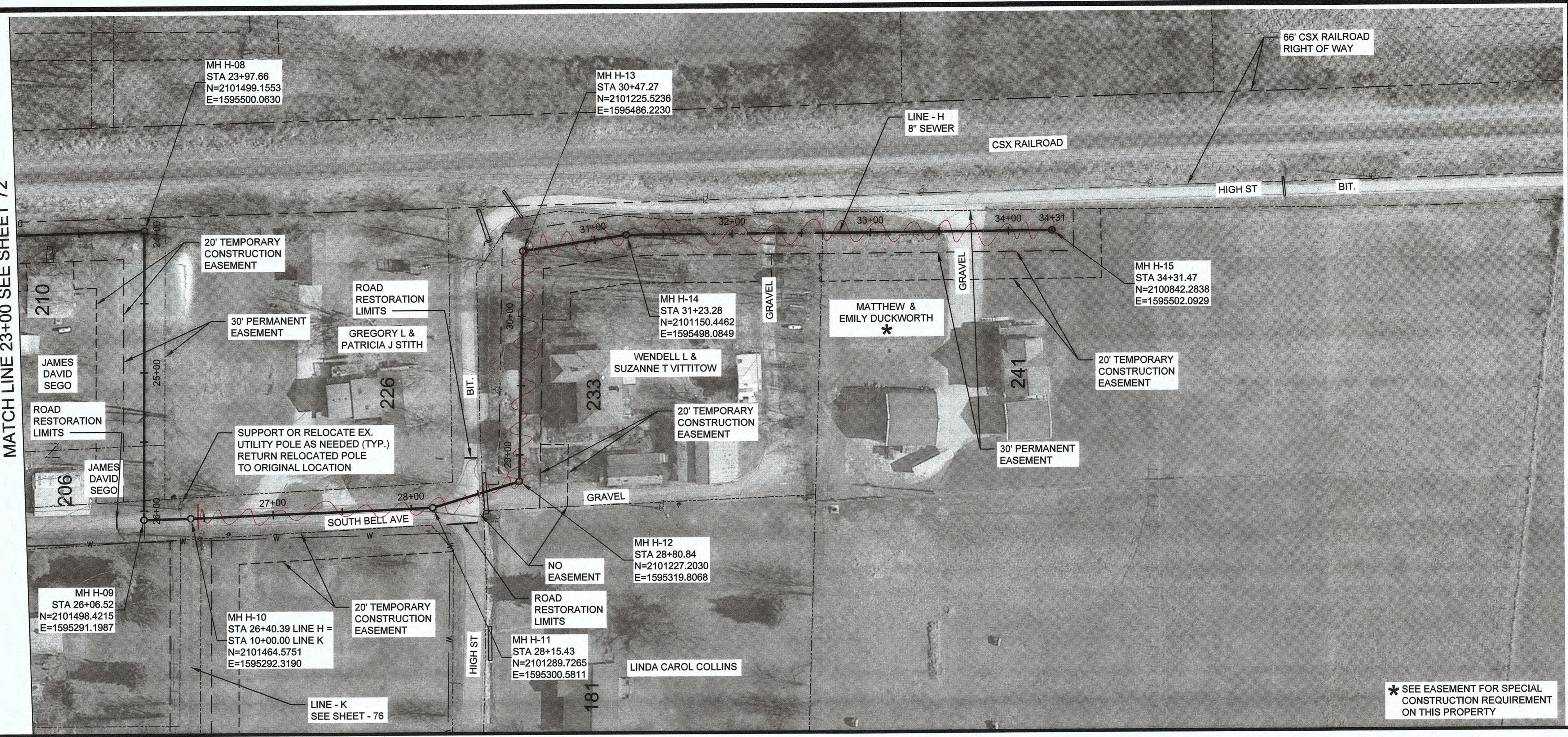
PROJECT MGR.
MAS



SHEET
72



MATCH LINE 23+00 SEE SHEET 72

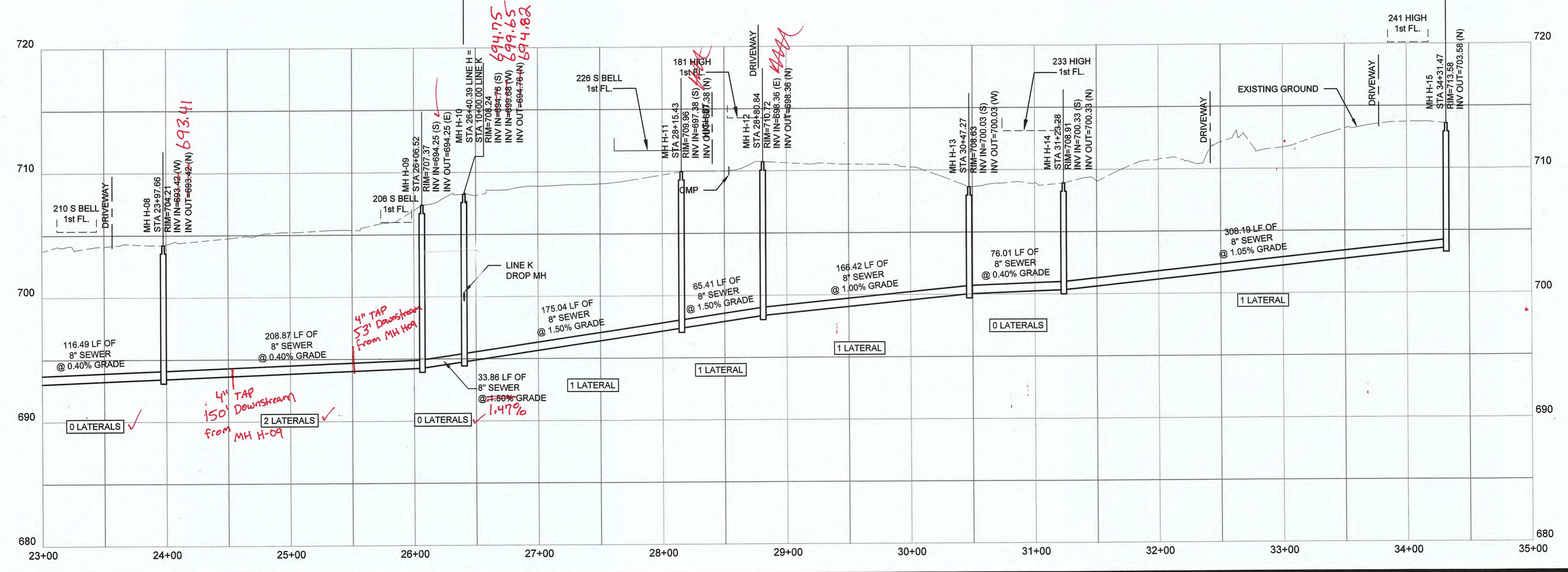


* SEE EASEMENT FOR SPECIAL CONSTRUCTION REQUIREMENT ON THIS PROPERTY



NO.	REVISIONS	DATE:

ALTERNATIVE BID

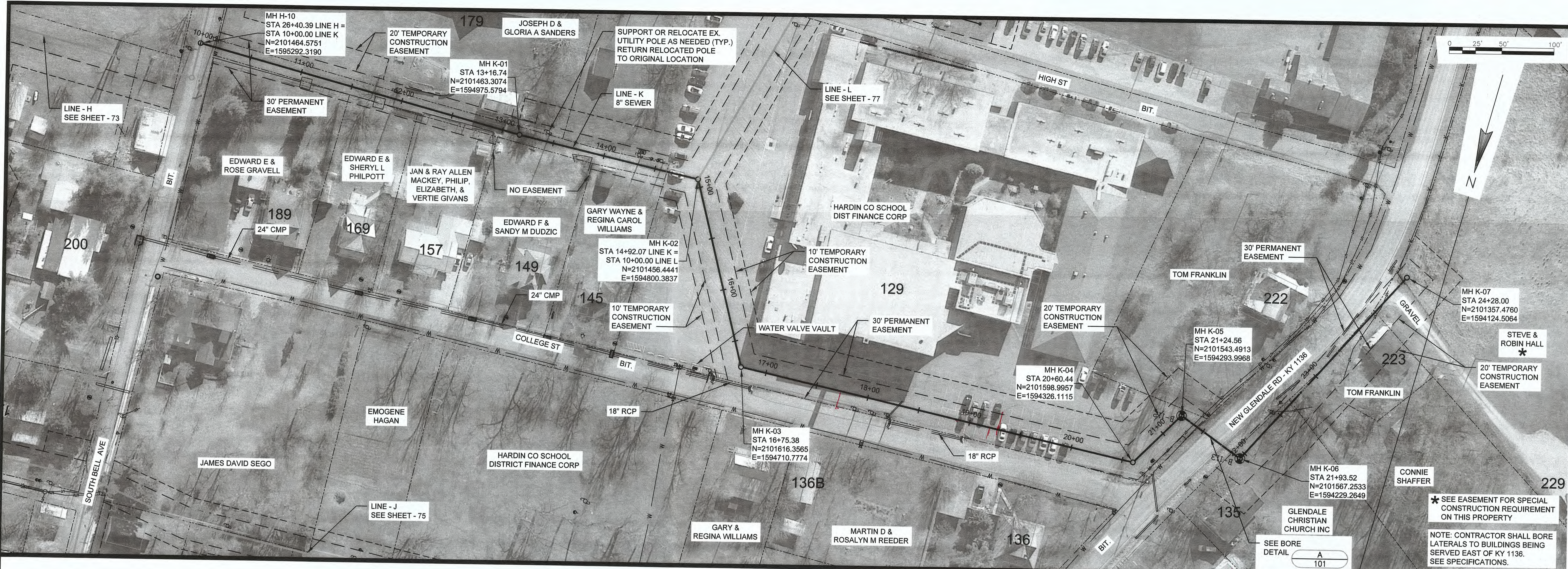


GRAVITY SEWER PLAN AND PROFILE
LINE H STA. 23+00 TO STA. 34+31.20
CONTRACT 3-2017
 NOLIN RIVER WATERSHED SEWER INFRASTRUCTURE
 HARDIN COUNTY WATER DISTRICT NO. 2
 HARDIN COUNTY, KENTUCKY

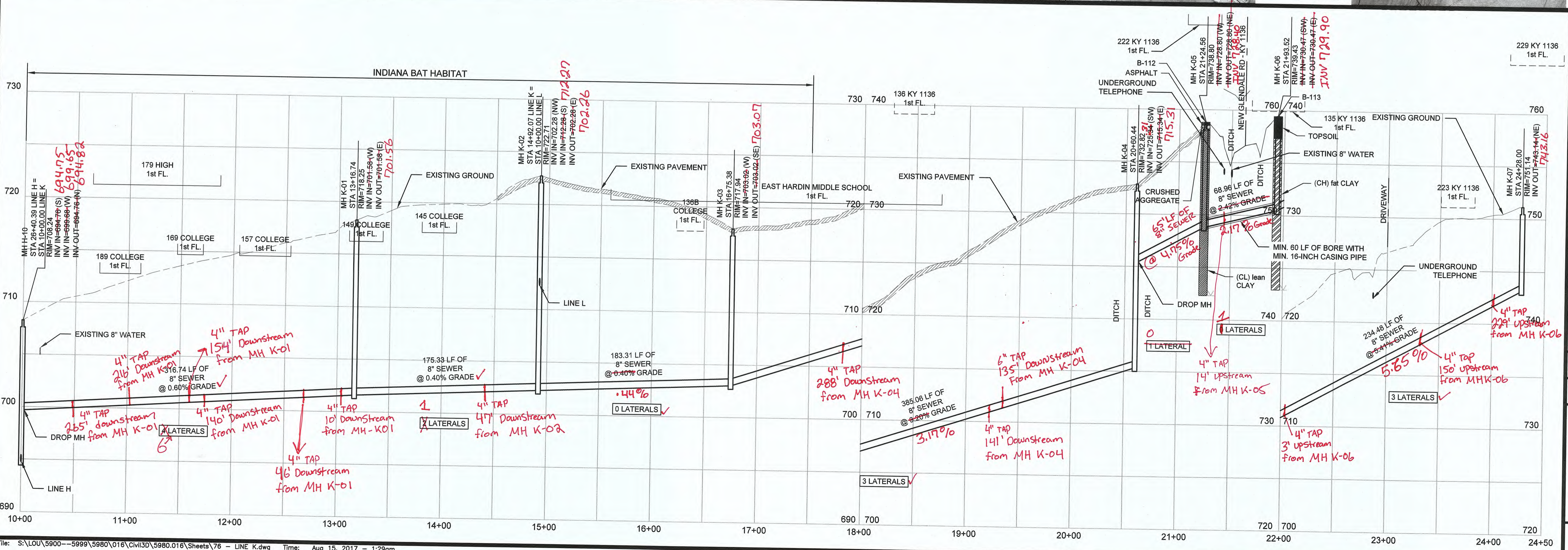
JOB NO.
5980.020
PROJECT MGR.
MAS



SHEET
73



NO.	REVISIONS	DATE



GRAVITY SEWER PLAN AND PROFILE
LINE K STA. 10+00 TO STA. 24+28.00
CONTRACT 3-2017

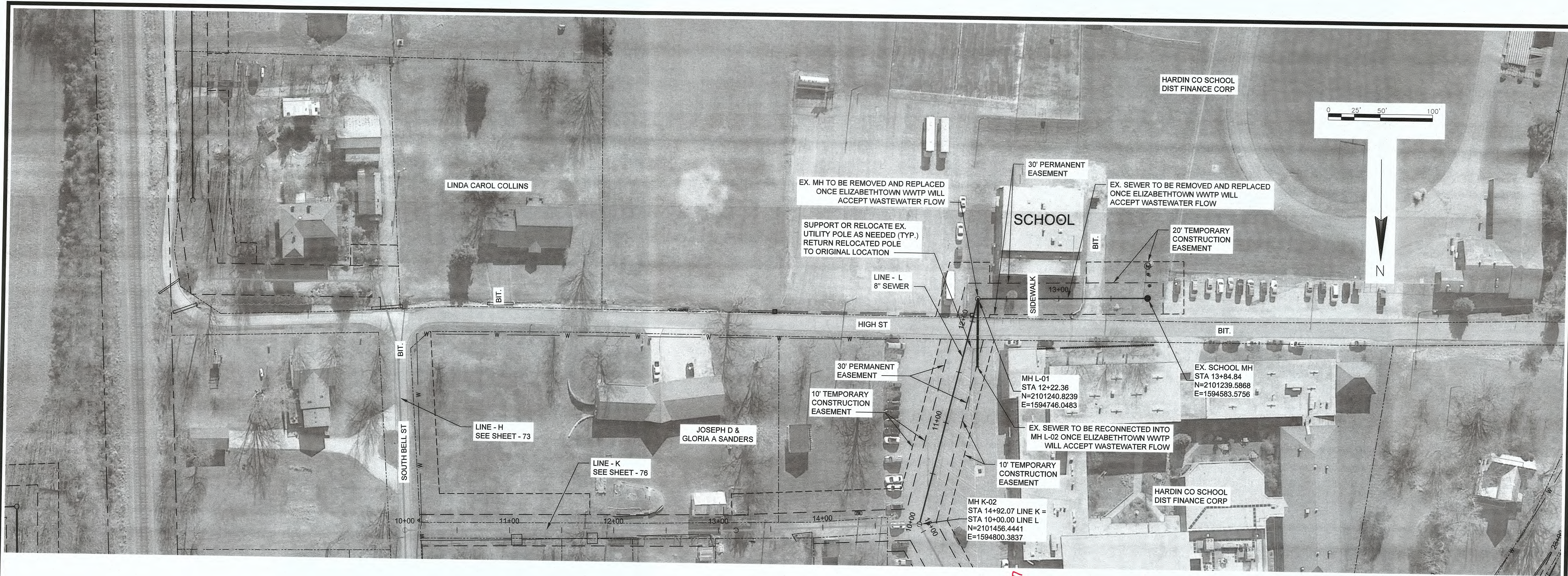
NOLIN RIVER WATERSHED SEWER INFRASTRUCTURE
 HARDIN COUNTY WATER DISTRICT NO. 2
 HARDIN COUNTY, KENTUCKY

JOB NO.
5980.020

PROJECT MGR.
MAS

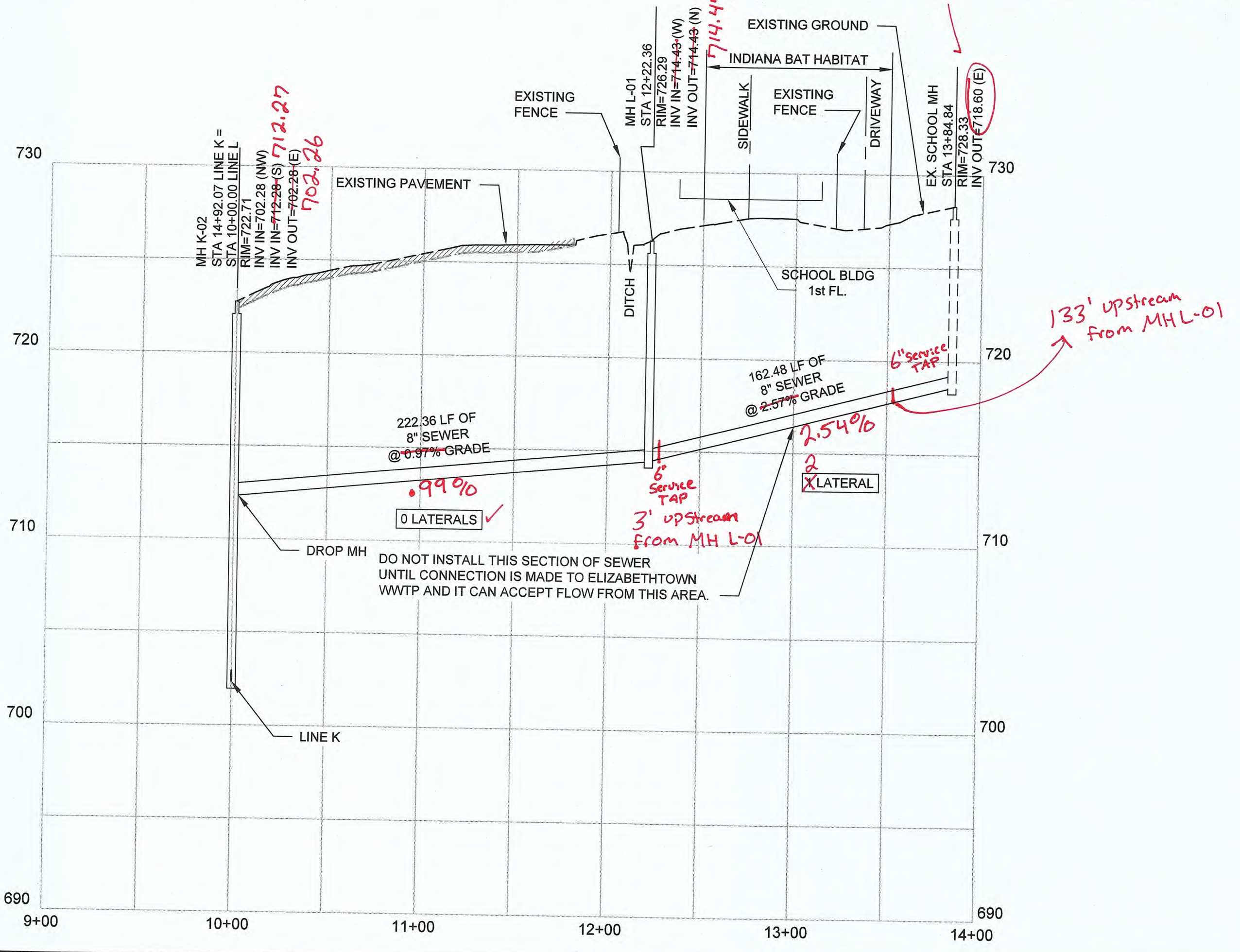


SHEET
76



STATE OF KENTUCKY
 MARK A SNEVE
 18511
 8/15/17

NO.	REVISIONS	DATE



GRAVITY SEWER PLAN AND PROFILE
LINE L STA. 10+00 TO STA. 13+84.84
CONTRACT 3-2017
 NOLIN RIVER WATERSHED SEWER INFRASTRUCTURE
 HARDIN COUNTY WATER DISTRICT NO. 2
 HARDIN COUNTY, KENTUCKY

JOB NO.
 5980.020
 PROJECT MGR.
 MAS



SHEET
 77