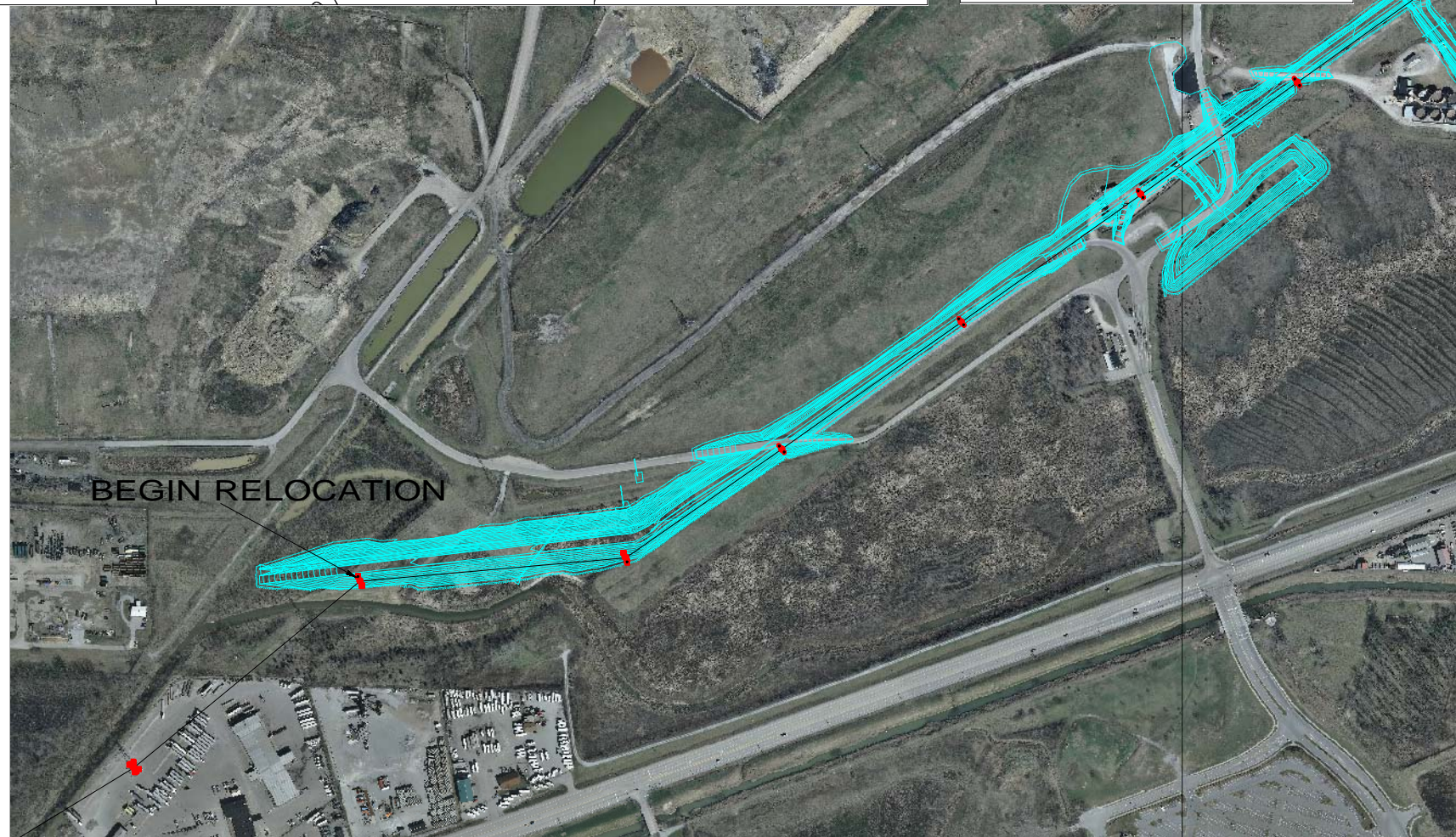
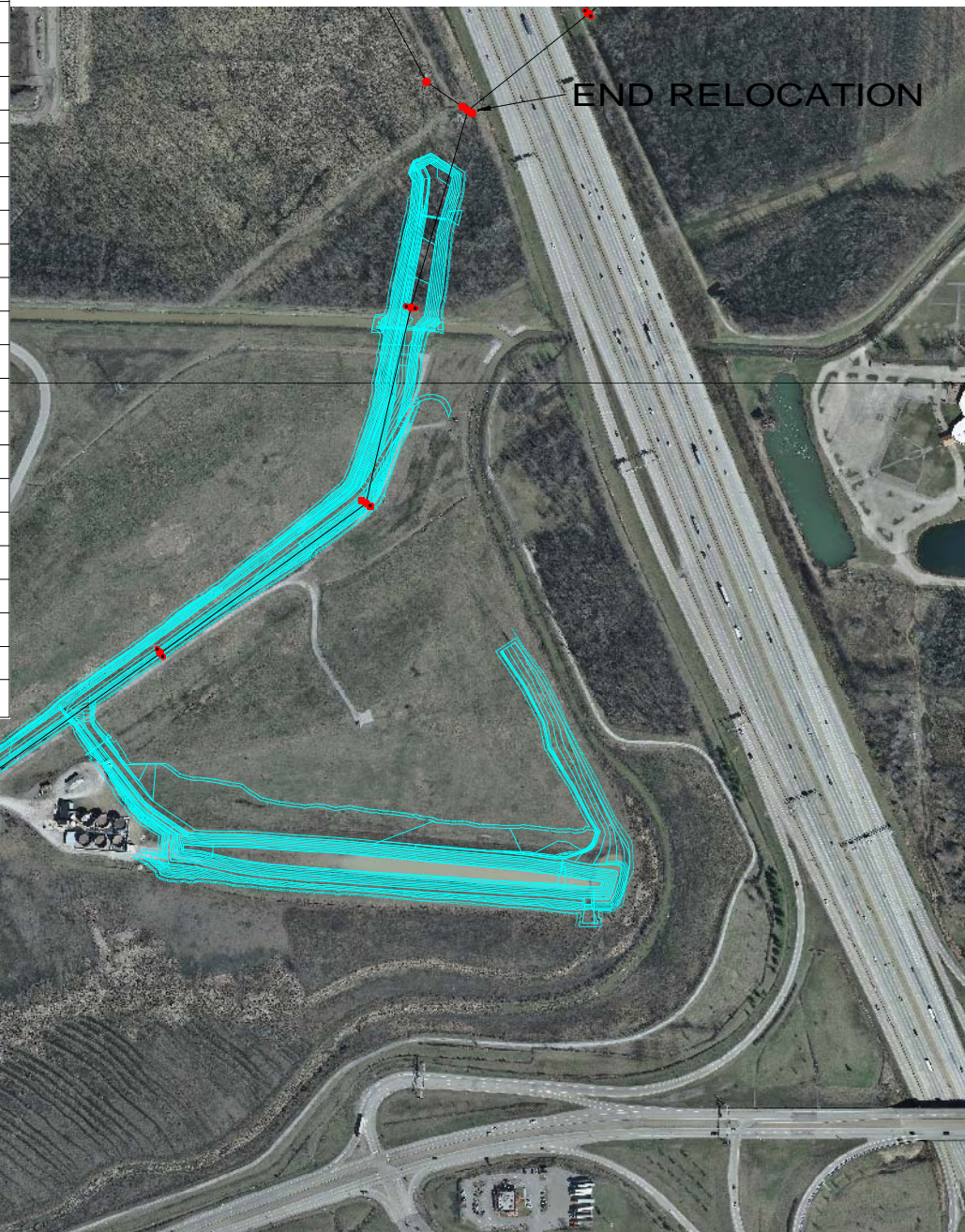


SHEET INDEX	
SHEET	CONTENT
N1	FULL BILL OF MATERIAL
1	P&P
2	P&P
A1	STRUCTURE 2 FRAMING AND BILL OF MATERIAL
A2	STRUCTURE 3 FRAMING AND BILL OF MATERIAL
A3	STRUCTURE 4 FRAMING AND BILL OF MATERIAL
A4	STRUCTURE 5 FRAMING AND BILL OF MATERIAL
A5	STRUCTURE 6 FRAMING AND BILL OF MATERIAL
A6	STRUCTURE 7 FRAMING AND BILL OF MATERIAL
A7	STRUCTURE 8 FRAMING AND BILL OF MATERIAL
A8	STRUCTURE 9 FRAMING AND BILL OF MATERIAL
A9	STRUCTURE 10 FRAMING AND BILL OF MATERIAL
A10	STRUCTURE 11B FRAMING AND BILL OF MATERIAL
A11	STANDARD DETAILS
A12	FAA LIGHTING SPECIFICATION
A13	STATIC STRINGING CHARTS
A14	CONDUCTOR STRINGING CHARTS
B-01	FOUNDATION DETAILS
B-02	FOUNDATION DETAILS

REPORT GENERATED: 12:11:11 PM 12/4/2017



APPROVED FOR CONSTRUCTION

SUBMITTED BY: **APPROVED**
By John Doll at 9:41 am, Dec 18, 2017

AUTHORIZED BY: **APPROVED**
By Ted Hornbuckle at 11:32 am, Dec 18, 2017

COMPLETED BY: *Alan Strunk* 6/14/18

NOTE: UPON COMPLETION OF WORK IN THE FIELD SEND
PRINT MARKED AS-BUILT TO: ALAN STRUNK
GENERAL OFFICE LEXINGTON KY. WITH ANY
CHANGES SHOWN ON PRINT

SURVEY BY

SCALES

1" = 550 FT

REVISED BY DATE

SURVEY BY:
DRAWN BY:
CHECKED BY:

OUTER LOOP LANDFILL RELOCATION
PROJECT: 146709 TASK: 3836.1
UNIT NO.: 385036



SHEET
COVER