

BOUNDLESS ENERGY<sup>SM</sup>

---

Efficiency and Effectiveness Metrics  
Kentucky Power Company

June 2017

# 2017 Efficiency & Effectiveness Metric Performance (vs. Target)

## OPERATING COMPANY OVERALL

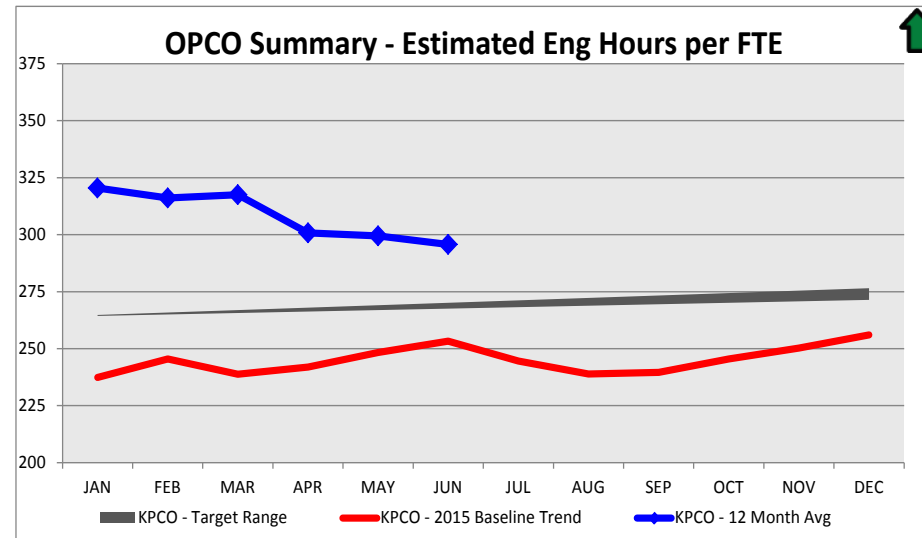
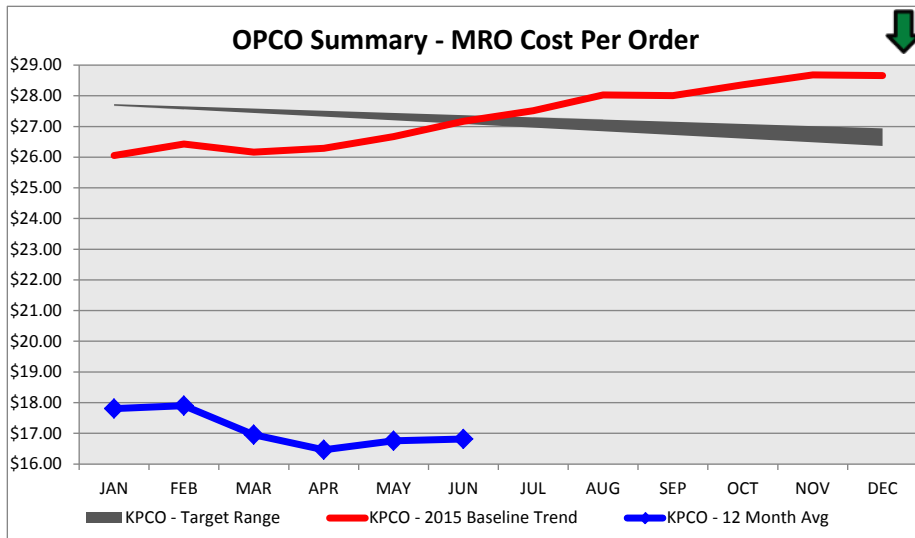
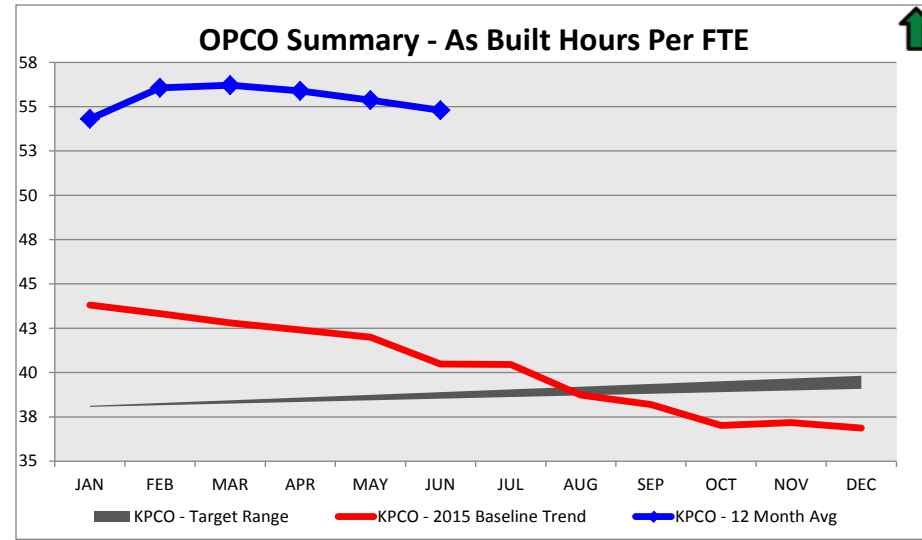
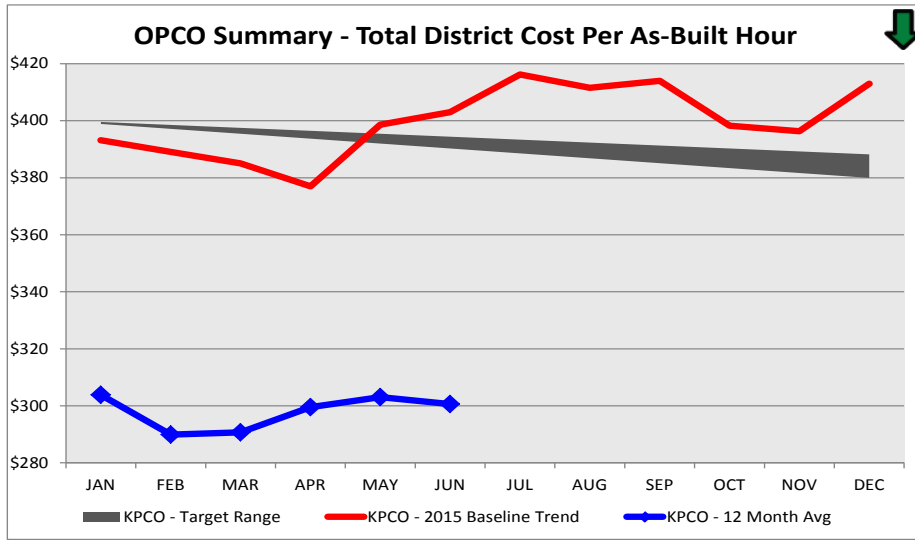
### Operating Company Operational Performance Metrics 12-Month Rolling Average - June 2017

Focus Area	Metric	KPCO	
		YTD Target	Actual
Key Metrics	Total District Cost per As Built Hour	\$394	\$301
	MRO Cost per Order Completed	\$27.37	\$16.82
	As Built Hours per FTE	38.5	54.8
	Est Engineering Hours Per FTE	268	296

Color Coding reflects favorable/unfavorable performance relative to Operational Target

# Efficiency & Effectiveness Metrics Performance

KPCO



# 2017 Efficiency & Effectiveness Metric Performance (vs. Target)

ALL DISTRICTS

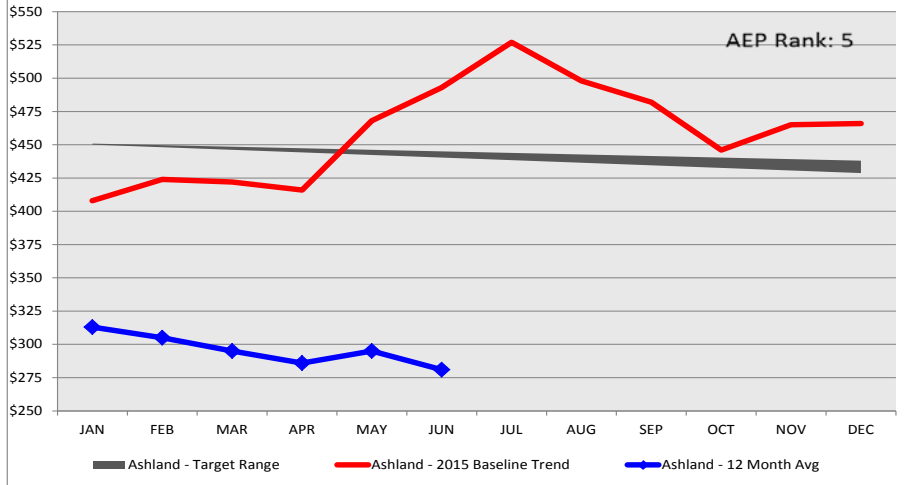
## District Operational Performance Metrics - 12-Month Rolling Average - June 2017

Focus Area	Metric	Ashland		Hazard		Pikeville	
		YTD Target	Actual	YTD Target	Actual	YTD Target	Actual
Key Metrics	Total District Cost per As Built Hour	\$445	\$281	\$359	\$341	\$387	\$287
	MRO Cost per Order Completed	\$28.18	\$16.31	\$31.36	\$20.07	\$24.26	\$15.21
	As Built Hours per FTE	33.0	57.4	47.3	52.9	36.0	54.3
	Est Engineering Hours Per FTE	239	287	275	306	285	295

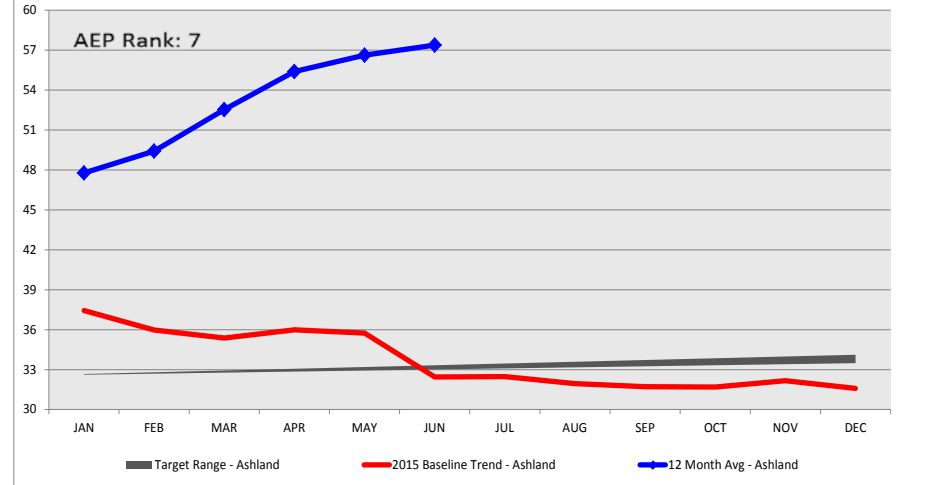
Color Coding reflects favorable/unfavorable performance relative to Operational Target

# Efficiency & Effectiveness Metrics Performance

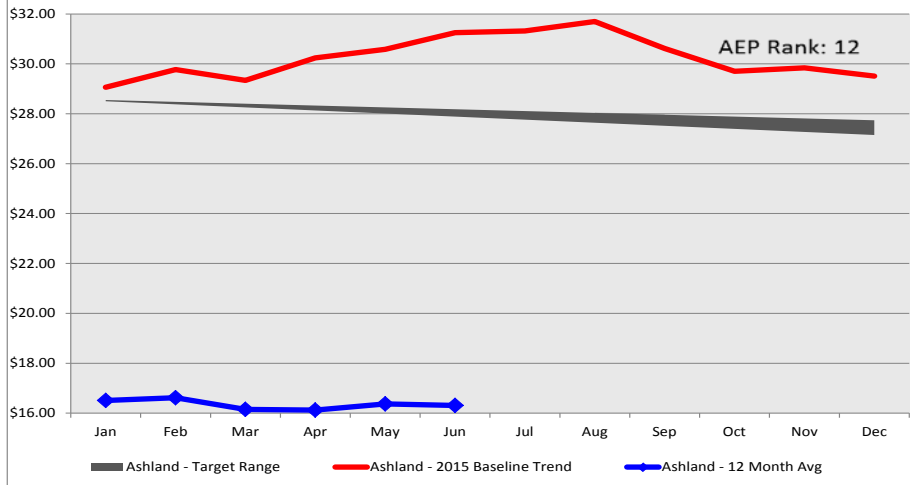
**Monetization: Total District Cost Per As-Built Hour**



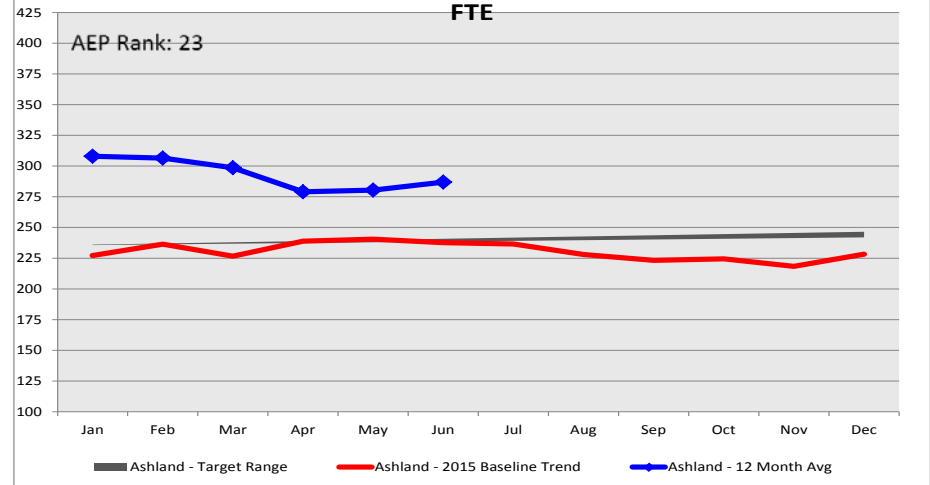
**Crew: As Built Hours per FTE**



**MRO: Cost per Order Completed**

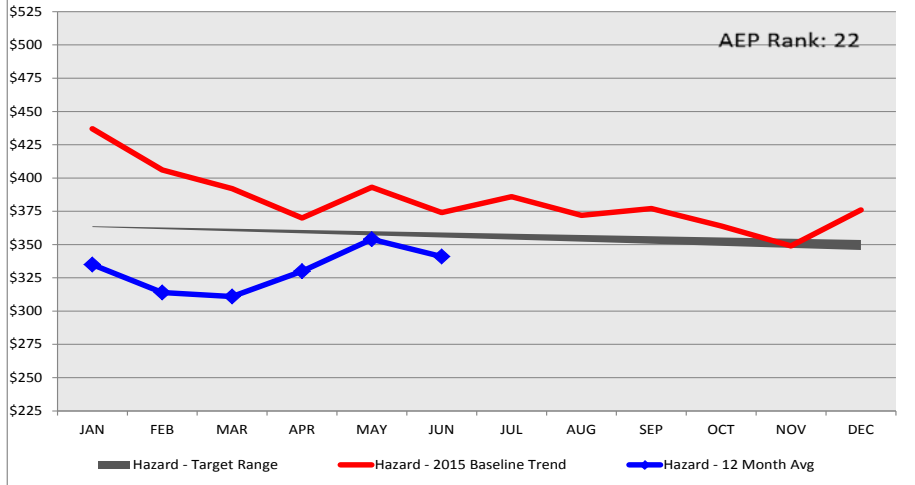


**Design: Engineering Productivity - Engineering Hrs per FTE**

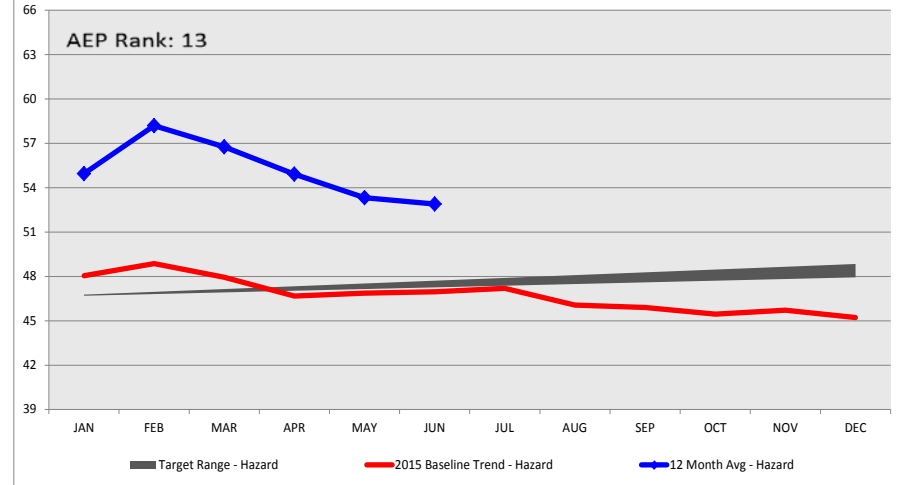


# Efficiency & Effectiveness Metrics Performance

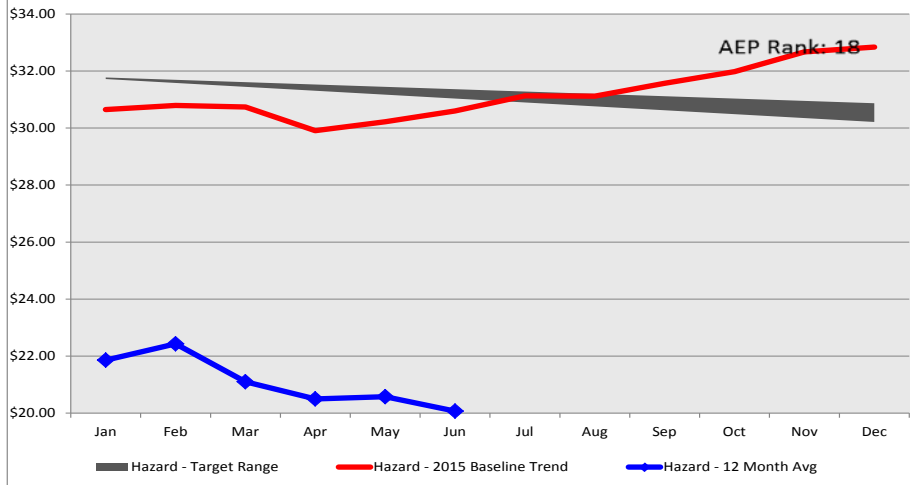
**Monetization: Total District Cost Per As-Built Hour**



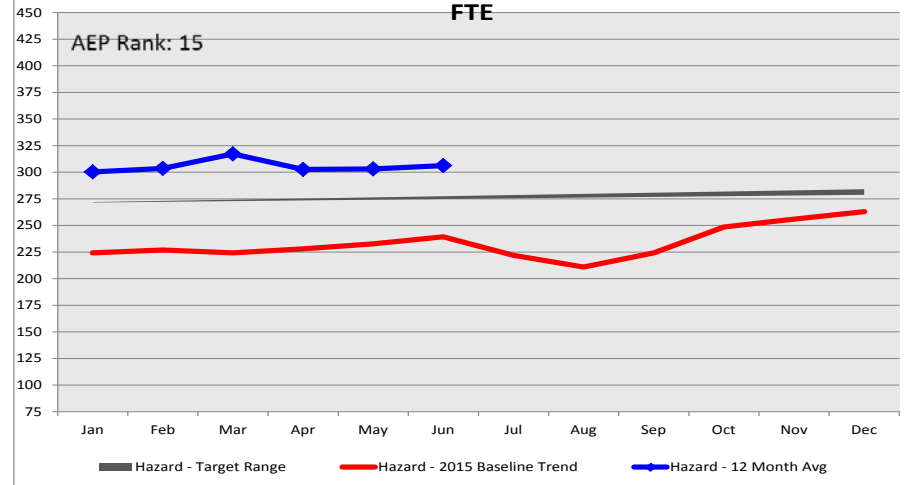
**Crew: As Built Hours per FTE**



**MRO: Cost per Order Completed**



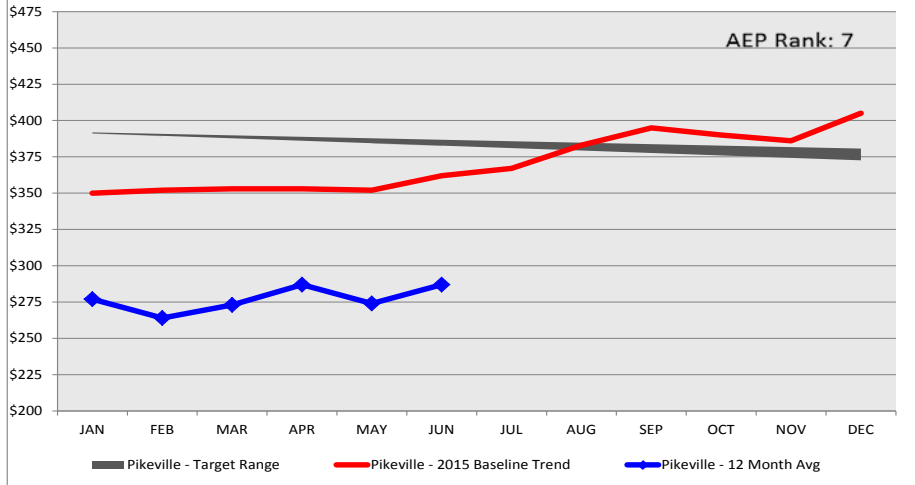
**Design: Engineering Productivity - Engineering Hrs per FTE**



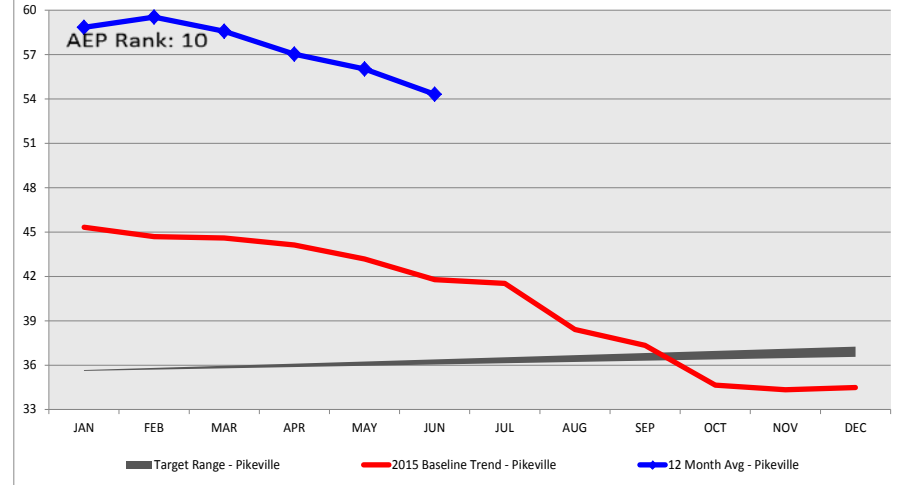
# Efficiency & Effectiveness Metrics Performance

PIKEVILLE

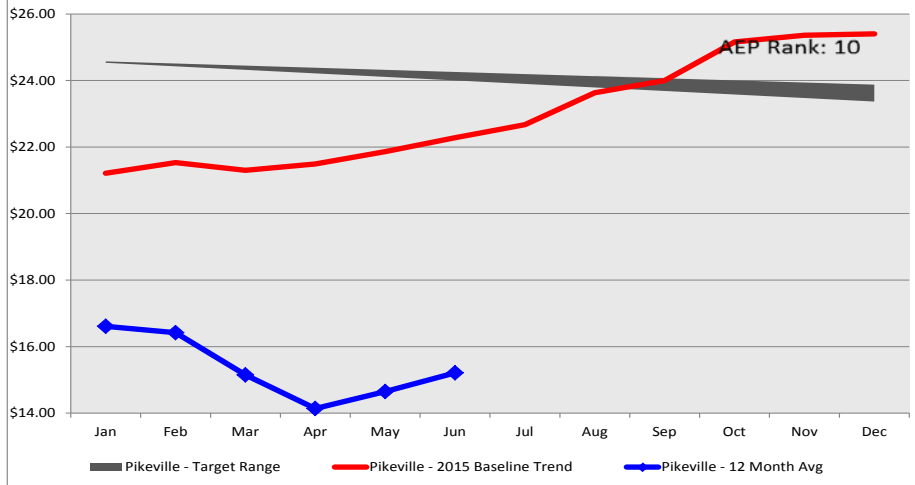
### Monetization: Total District Cost Per As-Built Hour



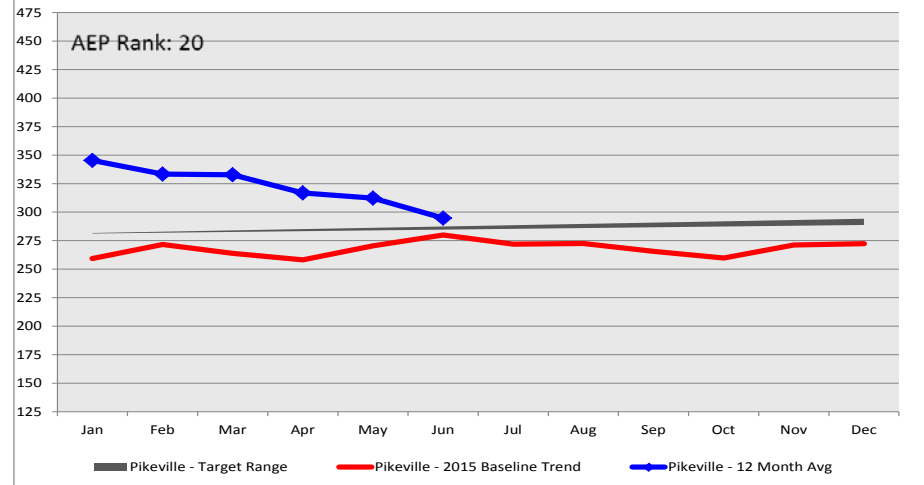
### Crew: As Built Hours per FTE



### MRO: Cost per Order Completed



### Design: Engineering Productivity - Engineering Hrs per FTE







# 2017 Efficiency & Effectiveness Macro Metric Performance (vs. Baseline Performance)

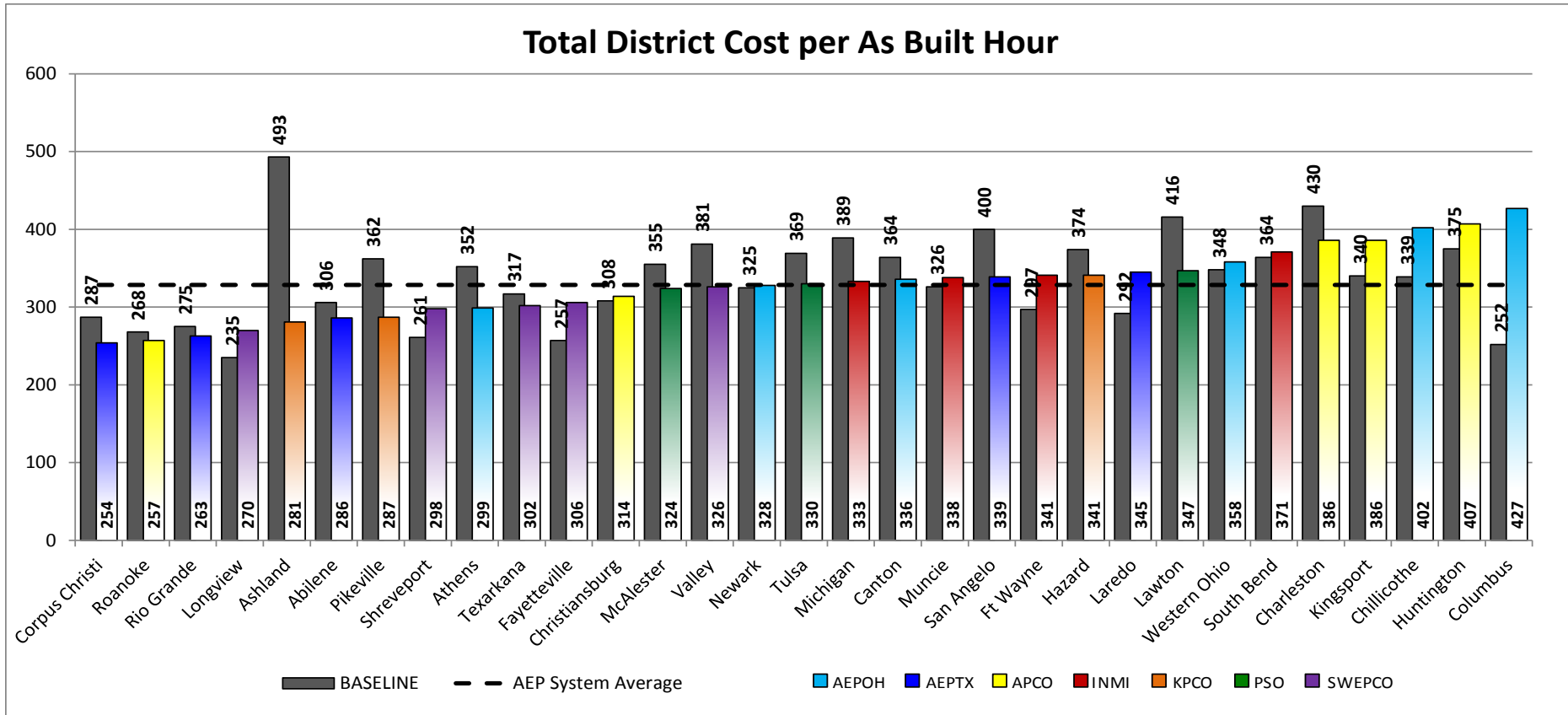
ALL DISTRICTS

## District Lean Macro Metrics - Rolling 12-Month June 2017

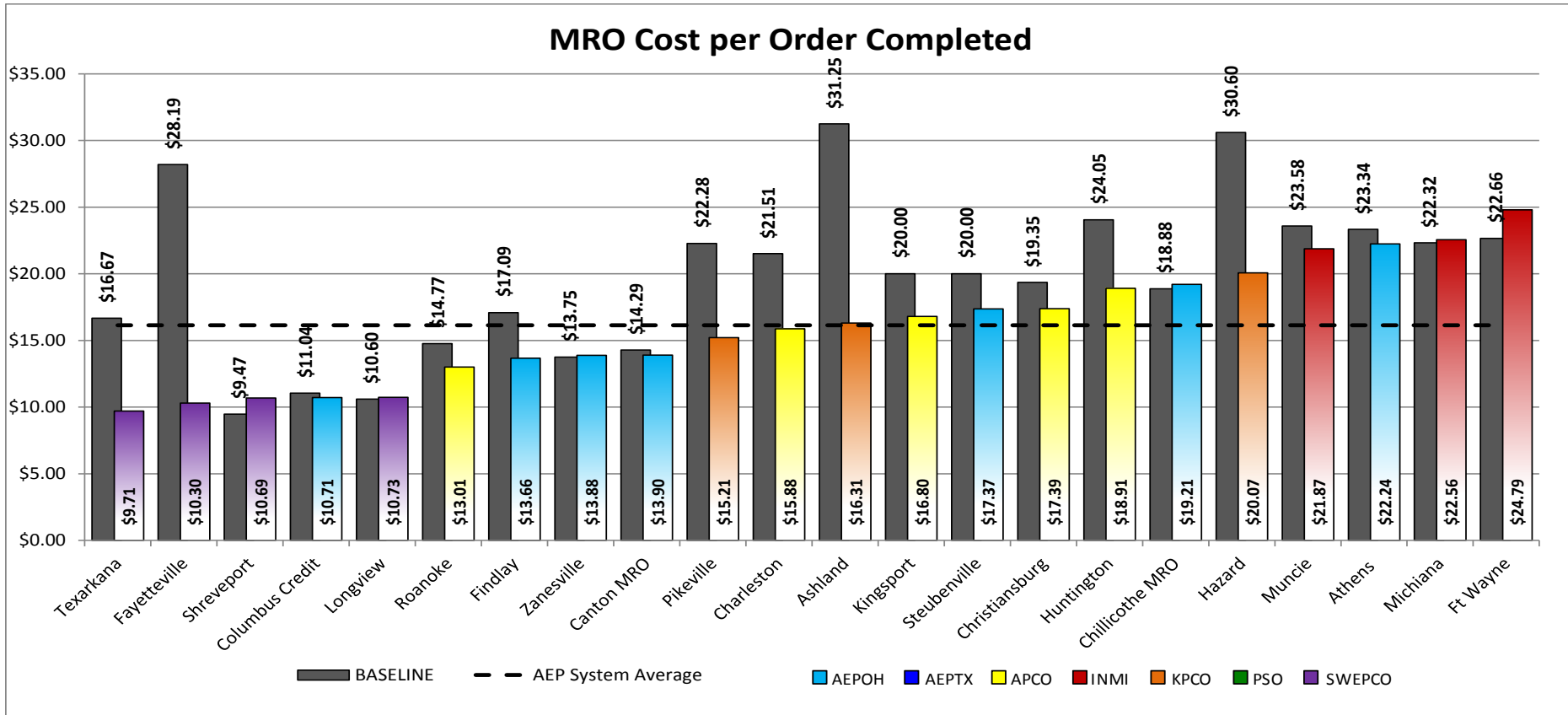
Metric	Ashland		Hazard		Pikeville	
	YTD		YTD		YTD	
	Baseline	Actual	Baseline	Actual	Baseline	Actual
Company Labor Cost per As Built Hour	\$336	\$181	\$233	\$198	\$253	\$191
Contractor Cost	\$245,587	\$137,582	\$217,385	\$146,365	\$276,528	\$246,547
Discretionary OT Hrs - Dist Front Line	1,600	1,026	1671	1198	797	894
Discretionary OT Hours - Engineering	865	416	462	315	1456	514
Discretionary OT Hours - MRO	760	964	512	735	624	879
Average MRO Orders per MRO FTE	224	353	186	306	314	343
As Built Hours per FTE (with Adders)	\$0	\$0	0	0.0	0	0.0
Productivity - ASB Hours / Labor Hours	29%	49%	40%	44%	34%	43%
Efficiency - ASB Hrs / Jobsite Hrs	60%	76%	55%	66%	53%	59%
Availability - Jobsite Hrs / Labor Hrs	71%	66%	61%	61%	56%	59%
Design to Build Accuracy	98%	96%	91%	97%	97%	92%
Percentage of Unit Cost (DOLC)	NA	69.51%	NA	93.41%	NA	83.92%
Percentage of Time & Materials (DOLC)	NA	30.49%	NA	6.59%	NA	16.08%

Color Coding reflects favorable/unfavorable performance relative to Baseline

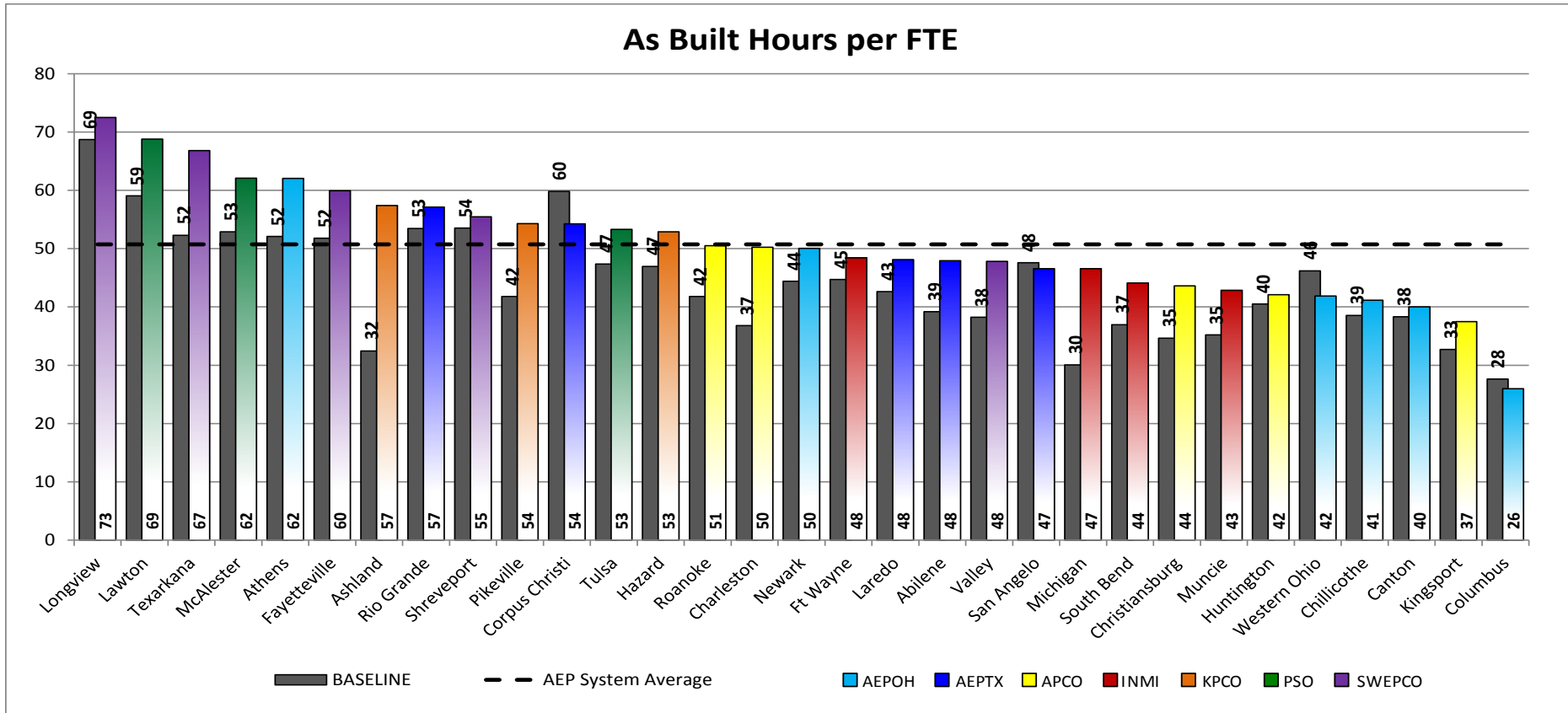
# 2017 Efficiency & Effectiveness Metric Performance – Ranking Across Districts



# 2017 Efficiency & Effectiveness Metric Performance – Ranking Across Districts



# 2017 Efficiency & Effectiveness Metric Performance – Ranking Across Districts



# 2017 Efficiency & Effectiveness Metric Performance – Ranking Across Districts

## Engineering Productivity Est Average Engineering Hours per FTE

