

NOTARIZED PROOF OF PUBLICATION

COMMONWEALTH OF KENTUCKY

COUNTY OF Franklin

Before me, a Notary Public, in and for said county and state, this 7th day of December, 2016 came Rachael McCarty, personally known to me, who, being duly sworn, states as follows: that she is the Advertising Assistant of the Kentucky Press Service, Inc.; that she has personal knowledge of the contents of this affidavit; and that the publications included on the attached list published the Legal Notice for Duke Energy Corporation.

Rachael McCarty
Signature

Bonnie J. House
Notary Public
My Commission Expires: 9-18-20

(SEAL) Id. # 563384

OFFICIAL PUBLICATION OFFICIAL PUBLICATION OFFICIAL PUBLICATION

NOTICE

Please take notice that Duke Energy Kentucky, Inc. has applied to the Kentucky Public Service Commission for approval to revise its Demand Side Management (DSM) rate for gas service and electric service for residential and commercial customers. Duke Energy Kentucky's current monthly DSM rate for residential gas customers is \$0.044741 per hundred cubic feet and for non-residential gas customers is \$0.000000 per hundred cubic feet. Duke Energy Kentucky's current monthly DSM rate for residential electric customers is \$0.007128 per kilowatt-hour and for non-residential customers is \$0.002758 per kilowatt-hour for distribution service and \$0.000049 per kilowatt-hour for transmission service.

Duke Energy Kentucky seeks approval to revise these rates as follows: Duke Energy Kentucky's monthly DSM rate for residential gas customers would decrease to (\$0.013241) per hundred cubic feet and for non-residential gas customers would remain at \$0.000000 per hundred cubic feet. Duke Energy Kentucky's monthly DSM rate for residential electric customers would increase to \$0.007967 per kilowatt-hour and for non-residential customers would decrease to \$0.002576 per kilowatt-hour for distribution service and would increase to \$0.000183 per kilowatt-hour for transmission service.

The rate contained in this notice is the rate proposed by Duke Energy Kentucky. However, the Public Service Commission may order a rate to be charged that differs from this proposed rate. Such action may result in a rate for consumers other than the rate in this notice. The foregoing rates reflect a proposed increase in electric revenues of approximately \$0.80 million or 0.25% over current total electric revenues and a decrease in gas revenues of approximately \$3.4 million or (4.00%) of current total gas revenues.

A typical residential gas customer using 70 ccf in a month will see a decrease of \$4.06 or (5.3%). A typical residential electric customer using 1000 kWh in a month will see an increase of \$0.84 or 0.95%. A typical non-residential electric customer using 40 kilowatts and 14,000 kWh will see a decrease of \$2.55 or (0.22%). A non-residential customer served at transmission voltage using 10,000 kilowatts and 4,000,000 kWh will see an increase of \$536.00 or 0.22%. Non-residential gas customers will see no change in their bills from this application.

Any corporation, association, body politic or person may by motion within thirty (30) days after publication or mailing of notice of the proposed rate changes, submit a written request to intervene to the Public Service Commission, 211 Sower Boulevard, P.O. Box 615, Frankfort, Kentucky 40602, and shall set forth the grounds for the request including the status and interest of the party. The intervention may be granted beyond the thirty (30) day period for good cause shown. Written comments regarding the proposed rate may be submitted to the Public Service Commission by mail or through the Public Service Commission's website. A copy of this application filed with the Public Service Commission is available for public inspection at Duke Energy Kentucky's office at 4580 Olympic Boulevard, Erlanger, Kentucky 41018 and on its website at <http://www.duke-energy.com>. This filing and any other related documents can be found on the Public Service Commission's website at <http://psc.ky.gov>.

PERMIT NOTICE

Final Major Construction/Operating Permit
 15-031 R2
 Bea, Inc.

24 - Agency Interest: 48936

Florence, KY 41042 has applied to the Kentucky Department of Environmental Protection for a permit to construct and install a Chemical Product Manufacturing facility at 8280, 10 Industrial Rd, 7130 New Buffington Road, classified as a Conditional Major source due to non-hazardous regulated air pollutants greater than the permit contains practically enforceable limitations to less than a major source threshold.

Permitting information should shortly become available at <http://www.ky.gov/permits.aspx>. Official copies of the draft permit are available for inspection by the public during the following locations: Division for Air Quality, 300 Sower Boulevard, Phone (502) 782-6783; Division for Air Quality, 300 Sower Boulevard, Phone (502) 782-6783; Division for Air Quality, 300 Sower Boulevard, Phone (502) 782-6783; Division for Air Quality, 300 Sower Boulevard, Phone (502) 782-6783.

Comments and/or public hearing requests should be submitted at the above Frankfort address or e-mail to the Division for Air Quality. If the Division finds that a hearing will contribute to resolving significant issues affecting the draft permit, all relevant comments will be considered in the permit decision. Information can be obtained by calling Mr. Sajjad

who will not discriminate on the basis of race, color, or disability in employment or the provision of reasonable accommodation including auxiliary aids. Individuals with disabilities an equal opportunity to participate in the process will be provided in alternate format

REQUEST FOR PROPOSAL

Proposals will be received by the Northern Kentucky Independent District Health Department (NKIDHD) on the date listed for the following:

PROPOSAL ITEM: PAYROLL - HUMAN RESOURCES PROCESSING OPENING
TIME: 12:00 PM Eastern Standard Time (synchronized at the following web-site): <http://www.time.gov>
LOCAL TIME
DATE: December 2, 2016
LOCATION NORTHERN KENTUCKY HEALTH DEPT
Office of Administration & Accounting
610 Medical Village Drive
Edgewood, KY 41017

Copies of this Solicitation and issued addenda may be obtained from George Moore by phone at (859) 344-5461, by fax at (859) 578-3689, or by e-mail at George.Moore@nkyhealth.org. Proposer shall submit the request prior to the time and date specified for the response deadline, and any and all requests must be made between the hours of 8:30 a.m. and 5:00 p.m. Proposals must be submitted in a sealed envelope or other sealed container, marked "PAYROLL/HR PROCESSING". Proposals will be opened and read aloud at 12:00 PM EST, local time. No oral, telegraphic, electronic, facsimile, or telephonic proposals or modifications will be accepted. The NKIDHD reserves the right to reject any and all proposals, to waive any informalities and to negotiate for the modifications of any proposal or accept that proposal which is deemed the most desirable and advantageous from the standpoint of customer value and may not, on its face, appear to be the lowest and best price. Proposer's authorized representatives may withdraw proposals only by written request received by George Moore before the Proposal Submittal Deadline. No proposal may be withdrawn for a period of ninety (90) days after the scheduled proposal opening date. At no time may the successful Proposer(s) withdraw his/her proposal. 507BCR, Nov17, '16#1726500

01-000082940

BOONE COUNTY 11/24/16

Sheila R. Hammons
Secretary/Treasurer

NOTICE

Please take notice that Duke Energy Kentucky, Inc. has applied to the Kentucky Public Service Commission for approval to revise its Demand Side Management (DSM) rate for gas service and electric service for residential and commercial customers. Duke Energy Kentucky's current monthly DSM rate for residential gas customers is \$0.044741 per hundred cubic feet and for non-residential gas customers is \$0.000000 per hundred cubic feet. Duke Energy Kentucky's current monthly DSM rate for residential electric customers is \$0.007128 per kilowatt-hour and for non-residential customers is \$0.002758 per kilowatt-hour for distribution service and \$0.000049 per kilowatt-hour for transmission service.

Duke Energy Kentucky seeks approval to revise these rates as follows: Duke Energy Kentucky's monthly DSM rate for residential gas customers would decrease to (\$0.013241) per hundred cubic feet and for non-residential gas customers would remain at \$0.000000 per hundred cubic feet. Duke Energy Kentucky's monthly DSM rate for residential electric customers would increase to \$0.007967 per kilowatt-hour and for non-residential customers would decrease to \$0.002578 per kilowatt-hour for distribution service and would increase to \$0.000183 per kilowatt-hour for transmission service.

The rate contained in this notice is the rate proposed by Duke Energy Kentucky. However, the Public Service Commission may order a rate to be charged that differs from this proposed rate. Such action may result in a rate for consumers other than the rate in this notice. The foregoing rates reflect a proposed increase in electric revenues of approximately \$0.80 million or 0.25% over current total electric revenues and a decrease in gas revenues of approximately \$3.4 million or (4.00%) of current total gas revenues.

A typical residential gas customer using 70 ccf in a month will see a decrease of \$4.06 or (5.3%). A typical residential electric customer using 1000 kWh in a month will see an increase of \$0.84 or 0.95%. A typical non-residential electric customer using 40 kilowatts and 14,000 kWh will see a decrease of \$2.55 or (0.22%). A non-residential customer served at transmission voltage using 10,000 kilowatts and 4,000,000 kWh will see an increase of \$536.00 or 0.22%. Non-residential gas customers will see no change in their bills from this application.

Any corporation, association, body politic or person may by motion within thirty (30) days after publication or mailing of notice of the proposed rate changes, submit a written request to intervene to the Public Service Commission, 211 Sower Boulevard, P.O. Box 615, Frankfort, Kentucky 40602, and shall set forth the grounds for the request including the status and interest of the party. The intervention may be granted beyond the thirty (30) day period for good cause shown. Written comments regarding the proposed rate may be submitted to the Public Service Commission by mail or through the Public Service Commission's website. A copy of this application filed with the Public Service Commission is available for public inspection at Duke Energy Kentucky's office at 4580 Olympic Boulevard, Erlanger, Kentucky 41018 and on its website at <http://www.duke-energy.com>. This filing and any other related documents can be found on the Public Service Commission's website at <http://psc.ky.gov>.

NOTICE TO BID

The Boone County Fiscal Court will receive sealed bids in the Office of the Purchasing Agent, Second Floor, Administration Building, 2950 Washington Street, PO Box 900, Burlington, Kentucky 41005, until 2:00 p.m., December 1, 2016 for a 7-passenger van for the Boone County Sheriff Department. Bids will be opened and publicly read aloud at that time in the Fiscal Courtroom, First Floor, Administration Building. Late, electronically submitted or facsimile bids will not be accepted.

BID ENVELOPE MUST BE LABELED: "SEALED BID: Passenger Van." Envelopes must also be labeled with the name and address of the vendor submitting the bid

Specifications may be obtained in the Human Resources Office, 2950 Washington St, Second Floor, Administration Building, 2950 Washington Street, Burlington, KY 41005 or by visiting our website at www.boonecountky.org, transparency, bids.

Boone County reserves the right to reject any and all bids, to waive any informalities and to negotiate for the modifications of any bid or to accept that bid which is deemed the most desirable and advantageous from the standpoint of customer value and service and concept of operations, even though such bid may not, on its face, appear to be the lowest and best price. No bid may be withdrawn for a period of sixty (60) days after scheduled time of receipt of bids.

Gary W. Moore
Boone County Judge Executive
507BCR, Nov24, '16#1739304

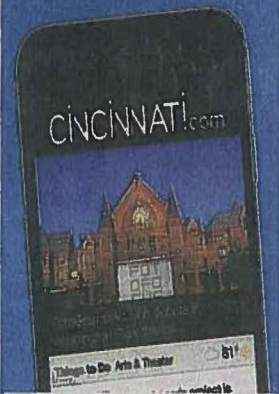
KENTON COUNTY AIRPORT BOARD 19TH CENTURY FAMILY CEMETERIES

The Kenton County Airport Board (KCAB) seeks information on two 19th century family cemeteries, both associated with the Popham family. They are both located on CVG Airport property north of US 18, south of Limaburg Creek, west of ZigZag Rd, Boone County, Kentucky. Known burials include Ann and Job Popham. Possible burials include Elizabeth Popham Crisler, Thomas Popham, Mary Popham Crisler, and others unknown. KCAB seeks direct descendants of persons buried in these family cemeteries. If you have knowledge in particular of these persons or other relevant information, please respond no later than January 13, 2017 to dconrad@cvgairport.com or call 859-767-7021. This advertisement is in compliance with Kentucky state law. BCR, Nov24, '16#1743837

#424 Erin Murphy
#527 Chasity Baker
The goods in this Auction are being sold under the Judicial Lien Act. The goods are generally described as household goods and / or business related items unless otherwise noted. COM-PASS SELF STORAGE reserves the right to accept or reject any and all bids. The payment terms of the sale are cash only. Complete terms of Auction will be posted day of sale at the Auction Site. Items may shift during inventory process. See and bid on all units at www.storage treasures.com

UPDATED ALL DAY.

NOW THAT'S REFRESHING.



THE NEWS IS ALWAYS CHANGING. SO ARE WE. VISIT US ONLINE TODAY

ENQUIRER MEDIA
A GANNETT COMPANY

BOONE COUNTY 12/1/16

OFFICIAL PUBLICATION

OFFICIAL PUBLICATION

OFFICIAL PUBLICATION

NOTICE

Please take notice that Duke Energy Kentucky, Inc. has applied to the Kentucky Public Service Commission for approval to revise its Demand Side Management (DSM) rate for gas service and electric service for residential and commercial customers. Duke Energy Kentucky's current monthly DSM rate for residential gas customers is \$0.044741 per hundred cubic feet and for non-residential gas customers is \$0.000000 per hundred cubic feet. Duke Energy Kentucky's current monthly DSM rate for residential electric customers is \$0.007128 per kilowatt-hour and for non-residential customers is \$0.002758 per kilowatt-hour for distribution service and \$0.000049 per kilowatt-hour for transmission service.

Duke Energy Kentucky seeks approval to revise these rates as follows: Duke Energy Kentucky's monthly DSM rate for residential gas customers would decrease to (\$0.013241) per hundred cubic feet and for non-residential gas customers would remain at \$0.000000 per hundred cubic feet. Duke Energy Kentucky's monthly DSM rate for residential electric customers would increase to \$0.007967 per kilowatt-hour and for non-residential customers would decrease to \$0.002576 per kilowatt-hour for distribution service and would increase to \$0.000183 per kilowatt-hour for transmission service.

The rate contained in this notice is the rate proposed by Duke Energy Kentucky. However, the Public Service Commission may order a rate to be charged that differs from this proposed rate. Such action may result in a rate for consumers other than the rate in this notice. The foregoing rates reflect a proposed increase in electric revenues of approximately \$0.80 million or 0.25% over current total electric revenues and a decrease in gas revenues of approximately \$3.4 million or (4.00%) of current total gas revenues.

A typical residential gas customer using 70 ccf in a month will see a decrease of \$4.06 or (5.3%). A typical residential electric customer using 1000 kWh in a month will see an increase of \$0.84 or 0.95%. A typical non-residential electric customer using 40 kilowatts and 14,000 kWh will see a decrease of \$2.55 or (0.22%). A non-residential customer served at transmission voltage using 10,000 kilowatts and 4,000,000 kWh will see an increase of \$536.00 or 0.22%. Non-residential gas customers will see no change in their bills from this application.

Any corporation, association, body politic or person may by motion within thirty (30) days after publication or mailing of notice of the proposed rate changes, submit a written request to intervene to the Public Service Commission, 211 Sower Boulevard, P.O. Box 815, Frankfort, Kentucky 40602, and shall set forth the grounds for the request including the status and interest of the party. The intervention may be granted beyond the thirty (30) day period for good cause shown. Written comments regarding the proposed rate may be submitted to the Public Service Commission by mail or through the Public Service Commission's website. A copy of this application filed with the Public Service Commission is available for public inspection at Duke Energy Kentucky's office at 4580 Olympic Boulevard, Erlanger, Kentucky 41018 and on its website at <http://www.duke-energy.com>. This filing and any other related documents can be found on the Public Service Commission's website at <http://psc.ky.gov>.

LEGAL NOTICE NOTICE OF APPOINTMENT

COMMONWEALTH OF KY
COUNTY OF BOONE

I, DIANNE MURRAY, CLERK OF THE DISTRICT COURT IN AND FOR THE COUNTY AND STATE AFORESAID, DO HEREBY CERTIFY THAT THE FOLLOWING PERSONS HAVE BEEN APPOINTED BY THE BOONE DISTRICT COURT AND HAVE QUALIFIED ACCORDING TO LAW. ALL PERSONS HAVING CLAIMS AGAINST THESE ESTATES ARE HEREBY NOTIFIED TO FILE THEIR CLAIMS WITH THE FIDUCIARY WITHIN SIX (6) MONTHS FROM THE DATE OF APPOINTMENT.

<u>ESTATE & ADDRESS</u>	<u>FIDUCIARY & ADDRESS</u>	<u>ATTORNEY & ADDRESS</u>	<u>DATE OF APPT</u>
WILLIAM MORRIS HENDRICKSON 8828 VALLEY CIRCLE FLORENCE, KY 41042	GARNETT FAY DYER HENDRICKSON 8828 VALLEY CIRCLE FLORENCE, KY 41042	JEFFREY R. AYLOR 6900 HOUSTON RD., BLDG. 700. STE 35 FLORENCE, KY 41042	09-28-2016
MARK EDWARD RUSSELL 10112 CARNATION COURT, APT 5 FLORENCE, KY 41042	BARBARA JEAN RUSSELL 10112 CARNATION COURT, APT 5 FLORENCE, KY 41042	JACOB G. SAMAD 7 W. 7TH ST., SUITE 1400 CINCINNATI, OH 45202	09-28-2016
HERBERT JOHNSON 13296 SERVICE ROAD WALTON, KY 41084	KAREN SWEATT 717 WINSTON HILL DR. TAYLOR MILL, KY 41015	JOHN R. KUMMER 909 WRIGHT'S SUMMIT PARKWAY FT. WRIGHT, KY 41011	10-05-2016
JIMMY R. LITRELL 11214 BIG BONE ROAD UNION, KY 41091	PHYLLIS EVELYN NALLY 316 QUEENSWAY DRIVE LEXINGTON, KY 40502	EDDIE W. BROWN 6900 HOUSTON RD BLDG. 600. STE 23 FLORENCE, KY 41042	10-04-2016
FRANK MARCUS BARBERICK 965 MISTFLOWER LANE FLORENCE, KY 41042	JESSICA BARBERICK 17 BUTLER STREET LUDLOW, KY 41016	BENJAMIN T. D. PUGH 28 WEST 5TH STREET COVINGTON, KY 41011	10-11-2016
DAVID M. COLYER 2913 SECOND ST PO BOX 97 PETERSBURG KY 41080	FRED D. COLYER 2913 SECOND ST PO BOX 97 PETERSBURG KY 41080		10-12-2016

THE CLICKAWAY!
line & Get More!
withoutlook.com
! EXTRA!

JUST
DON'T
DO IT



PEOPLE WHO READ
NEWSPAPERS ARE
MORE SUCCESSFUL
BUSINESS OWNERS
IT ALL STARTS WITH
NEWSPAPERS!

NOTICE

Please take notice that Duke Energy Kentucky, Inc. has applied to the Kentucky Public Service Commission for approval to revise its Demand Side Management (DSM) rate for gas service and electric service for residential and commercial customers. Duke Energy Kentucky's current monthly DSM rate for residential gas customers is \$0.044741 per hundred cubic feet and for non-residential gas customers is \$0.000000 per hundred cubic feet. Duke Energy Kentucky's current monthly DSM rate for residential electric customers is \$0.007128 per kilowatt-hour and for non-residential customers is \$0.002758 per kilowatt-hour for distribution service and \$0.000049 per kilowatt-hour for transmission service.

Duke Energy Kentucky seeks approval to revise these rates as follows: Duke Energy Kentucky's monthly DSM rate for residential gas customers would decrease to (\$0.013241) per hundred cubic feet and for non-residential gas customers would remain at \$0.000000 per hundred cubic feet. Duke Energy Kentucky's monthly DSM rate for residential electric customers would increase to \$0.007967 per kilowatt-hour and for non-residential customers would decrease to \$0.002578 per kilowatt-hour for distribution service and would increase to \$0.000183 per kilowatt-hour for transmission service.

The rate contained in this notice is the rate proposed by Duke Energy Kentucky. However, the Public Service Commission may order a rate to be charged that differs from this proposed rate. Such action may result in a rate for consumers other than the rate in this notice. The foregoing rates reflect a proposed increase in electric revenues of approximately \$0.80 million or 0.25% over current total electric revenues and a decrease in gas revenues of approximately \$3.4 million or (4.00%) of current total gas revenues.

A typical residential gas customer using 70 ccf in a month will see a decrease of \$4.06 or (5.3%). A typical residential electric customer using 1000 kWh in a month will see an increase of \$0.84 or 0.95%. A typical non-residential electric customer using 40 kilowatts and 14,000 kWh will see a decrease of \$2.55 or (0.22%). A non-residential customer served at transmission voltage using 10,000 kilowatts and 4,000,000 kWh will see an increase of \$536.00 or 0.22%. Non-residential gas customers will see no change in their bills from this application.

Any corporation, association, body politic or person may by motion within thirty (30) days after publication or mailing of notice of the proposed rate changes, submit a written request to intervene to the Public Service Commission, 211 Sower Boulevard, P.O. Box 615, Frankfort, Kentucky 40602, and shall set forth the grounds for the request including the status and interest of the party. The intervention may be granted beyond the thirty (30) day period for good cause shown. Written comments regarding the proposed rate may be submitted to the Public Service Commission by mail or through the Public Service Commission's website. A copy of this application filed with the Public Service Commission is available for public inspection at Duke Energy Kentucky's office at 4580 Olympic Boulevard, Erlanger, Kentucky 41018 and on its website at <http://www.duke-energy.com>. This filing and any other related documents can be found on the Public Service Commission's website at <http://psc.ky.gov>.

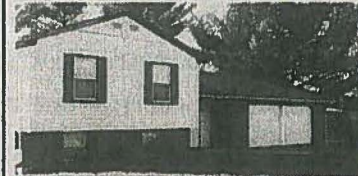
Pendleton County Industrial Development Authority, Inc.
ACCEPTING SEALED BIDS

The Pendleton County Industrial Development Authority, Inc. will be taking sealed bids to purchase the house and building located at 108 Ideal Drive. This is a three bedroom, two car garage house with a large metal building on a nice lot.

Bids must be submitted by 4 p.m. on December 6, 2016 to the Pendleton County Court House, 2nd floor, 233 Main St., Falmouth, KY 41040. Bids will be opened at a special meeting at 6 p.m. on December 6, 2016. The meeting will be held at the Citizens Building, 135 W. Shelby St., Falmouth, Ky.

Property will be shown by appointment. Call 859-654-4332 for appointment or questions.

All bids should be sealed and marked "Bid." No faxed bids will be accepted. The Pendleton County Industrial Development Authority, Inc. reserves the right to accept or reject any and all bids.



3 BR Home & Metal Building

108 Ideal Drive, Falmouth, KY 41040

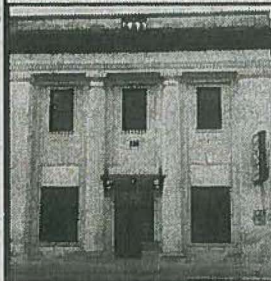
Pendleton County Industrial Development Authority, Inc.
ACCEPTING SEALED BIDS

The Pendleton County Industrial Development Authority, Inc. will be taking sealed bids on the Citizens Building and rear parking lot located at 135 W. Shelby St., Falmouth, Ky. This is a two-story office building with a large conference room, large safe, and kitchen.

Bids must be submitted by 4 p.m. on December 6, 2016, to the Pendleton Co. Courthouse, 2nd floor, 233 Main St., Falmouth, KY 41040. Bids will be opened at a special meeting on December 6, 2016 at 6 p.m. The meeting will be held at the Citizens Building.

Property will be shown by appointment. You can call 859-654-4332 to schedule an appointment or with questions.

All bids should be sealed and clearly marked "Bid."



No faxed bids will be accepted. The Pendleton County Industrial Development Authority, Inc. reserves the right to accept or reject any and all bids.

Citizens Building & Parking Lot

135 W. Shelby Street
Falmouth, KY 41040

FALMOUTH 11/15/16

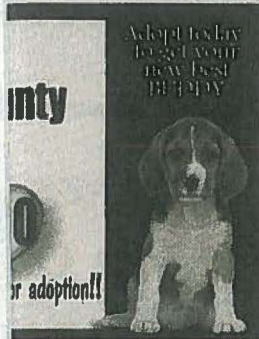
Students at Phillip Sharp participated in the annual "Quality Store" on Friday, November 18. This program stresses the importance of higher education and personal responsibility to the students as they plan out a budget.

As the students begin the program, they choose an education and career path to determine the amount of money they will have to spend at each booth. The students then passed by the booth where they had to make income taxes. After this, the students had free range to choose where their money

would be invested. This included a number of outlets, including savings, charities, and a lottery. If any of the students became tight on money there was an option to take out loans or to pick up a second job.

This is the 19th time the event has been put on by Phillip Sharp and it is worked

every year by volunteers from the Family Resource Center, the Rotarians, and the Pendleton County Extension. It's important that kids get this opportunity to participate because it is one of the few times throughout their education where they will have to apply what they've learned to real life situations.



School
Semester
End - PM
9th - AM
/ session,
dule.
ificate and
creening.
the week
erwork is
h.
make an
ormation.

NOTICE

Please take notice that Duke Energy Kentucky, Inc. has applied to the Kentucky Public Service Commission for approval to revise its Demand Side Management (DSM) rate for gas service and electric service for residential and commercial customers. Duke Energy Kentucky's current monthly DSM rate for residential gas customers is \$0.044741 per hundred cubic feet and for non-residential gas customers is \$0.000000 per hundred cubic feet. Duke Energy Kentucky's current monthly DSM rate for residential electric customers is \$0.007128 per kilowatt-hour and for non-residential customers is \$0.002758 per kilowatt-hour for distribution service and \$0.000049 per kilowatt-hour for transmission service.

Duke Energy Kentucky seeks approval to revise these rates as follows: Duke Energy Kentucky's monthly DSM rate for residential gas customers would decrease to (\$0.013241) per hundred cubic feet and for non-residential gas customers would remain at \$0.000000 per hundred cubic feet. Duke Energy Kentucky's monthly DSM rate for residential electric customers would increase to \$0.007967 per kilowatt-hour and for non-residential customers would decrease to \$0.002578 per kilowatt-hour for distribution service and would increase to \$0.000183 per kilowatt-hour for transmission service.

The rate contained in this notice is the rate proposed by Duke Energy Kentucky. However, the Public Service Commission may order a rate to be charged that differs from this proposed rate. Such action may result in a rate for consumers other than the rate in this notice. The foregoing rates reflect a proposed increase in electric revenues of approximately \$0.80 million or 0.25% over current total electric revenues and a decrease in gas revenues of approximately \$3 million or (4.00%) of current total gas revenues.

A typical residential gas customer using 70 ccf in a month will see a decrease of \$4.08 (5.3%). A typical residential electric customer using 1000 kWh in a month will see an increase of \$0.84 or 0.95%. A typical non-residential electric customer using 40 kilowatts and 14,000 kWh will see a decrease of \$2.55 or (0.22%). A non-residential customer served at transmission voltage using 10,000 kilowatts and 4,000,000 kWh will see an increase of \$536.00 (0.22%). Non-residential gas customers will see no change in their bills from this application.

Any corporation, association, body politic or person may by motion within thirty (30) days after publication or mailing of notice of the proposed rate changes, submit a written request to intervene to the Public Service Commission, 211 Sower Boulevard, P.O. Box 815, Frankfort, Kentucky 40602, and shall set forth the grounds for the request including the status and interest of the party. The intervention may be granted beyond the thirty (30) day period for good cause shown. Written comments regarding the proposed rate may be submitted to the Public Service Commission by mail or through the Public Service Commission's website. A copy of the application filed with the Public Service Commission is available for public inspection at Duke Energy Kentucky's office at 4580 Olympic Boulevard, Erlanger, Kentucky 41018 and on its website at <http://www.duke-energy.com>. This filing and any other related documents can be found on the Public Service Commission's website at <http://psc.ky.gov>.

FALMOUTH 11/22/16



ld it!



arn, riding arena, horse
e built? Give us a call!

Y POLE BARN
ynthiana, KY 41031
724-2135

ook.com

The Falmouth Outlook
ISSN: 0891-8694

Neil Belcher
Publisher
Debbie Dennie,
Publisher Emeritus
Phone: 859-654-3332
Fax: 859-654-4365
Main Email:
news@falmouthoutlook.com
ads@falmouthoutlook.com

Website: www.falmouthoutlook.com
PUBLISHED WEEKLY BY OUTLOOK PUBLICATIONS, 210 MAIN STREET, FALMOUTH, KENTUCKY 41040. SUBSCRIPTION RATES: IN-COUNTY \$30 PER YEAR; OUT-OF-COUNTY \$39 PER YEAR; OUT-OF-STATE \$47 PER YEAR. PRICE PER SINGLE COPY \$1 + TAX. ADVERTISING RATES UPON REQUEST.

NEIL BELCHER: PUBLISHER
JACKIE VAUGHN: NEWS EDITOR/LAYOUT
JESSIE BECKETT: ADVERTISING/GRAPHICS COORDINATOR
KATHY RANDOLPH: BOOKKEEPER
SARAH TACKETT: TYPESETTER/LAYOUT
ED SALERNO: REPORTER
SAM MCCLEANAHAN: REPORTER/SALES
Periodicals Postage Paid at Falmouth, Kentucky; Periodicals Postal Permit USPS 185-060. Postmaster: Send address change to:
The Falmouth Outlook, P.O. Box 111, Falmouth, KY 41040.



Gotten married

Call (859) 654-3333 to find out how to submit your photos (for only \$10) and announcements in the paper or E-mail them to news@falmouthoutlook.com

The Falmouth Outlook

NOTICE

Please take notice that Duke Energy Kentucky, Inc. has applied to the Kentucky Public Service Commission for approval to revise its Demand Side Management (DSM) rate for gas service and electric service for residential and commercial customers. Duke Energy Kentucky's current monthly DSM rate for residential gas customers is \$0.044741 per hundred cubic feet and for non-residential gas customers is \$0.000000 per hundred cubic feet. Duke Energy Kentucky's current monthly DSM rate for residential electric customers is \$0.007128 per kilowatt-hour and for non-residential customers is \$0.002758 per kilowatt-hour for distribution service and \$0.000049 per kilowatt-hour for transmission service.

Duke Energy Kentucky seeks approval to revise these rates as follows: Duke Energy Kentucky's monthly DSM rate for residential gas customers would decrease to (\$0.013241) per hundred cubic feet and for non-residential gas customers would remain at \$0.000000 per hundred cubic feet. Duke Energy Kentucky's monthly DSM rate for residential electric customers would increase to \$0.007967 per kilowatt-hour and for non-residential customers would decrease to \$0.002578 per kilowatt-hour for distribution service and would increase to \$0.000183 per kilowatt-hour for transmission service.

The rate contained in this notice is the rate proposed by Duke Energy Kentucky. However, the Public Service Commission may order a rate to be charged that differs from this proposed rate. Such action may result in a rate for consumers other than the rate in this notice. The foregoing rates reflect a proposed increase in electric revenues of approximately \$0.80 million or 0.25% over current total electric revenues and a decrease in gas revenues of approximately \$3.4 million or (4.00%) of current total gas revenues.

A typical residential gas customer using 70 ccf in a month will see a decrease of \$4.06 or (5.3%). A typical residential electric customer using 1000 kWh in a month will see an increase of \$0.84 or 0.95%. A typical non-residential electric customer using 40 kilowatts and 14,000 kWh will see a decrease of \$2.55 or (0.22%). A non-residential customer served at transmission voltage using 10,000 kilowatts and 4,000,000 kWh will see an increase of \$538.00 or 0.22%. Non-residential gas customers will see no change in their bills from this application.

Any corporation, association, body politic or person may by motion within thirty (30) days after publication or mailing of notice of the proposed rate changes, submit a written request to intervene to the Public Service Commission, 211 Sower Boulevard, P.O. Box 615, Frankfort, Kentucky 40602, and shall set forth the grounds for the request including the status and interest of the party. The intervention may be granted beyond the thirty (30) day period for good cause shown. Written comments regarding the proposed rate may be submitted to the Public Service Commission by mail or through the Public Service Commission's website. A copy of this application filed with the Public Service Commission is available for public inspection at Duke Energy Kentucky's office at 4580 Olympic Boulevard, Erlanger, Kentucky 41018 and on its website at <http://www.duke-energy.com>. This filing and any other related documents can be found on the Public Service Commission's website at <http://psc.ky.gov>.

9/15/11 FALMOUTH



Duke

OFFICIAL PUBLICATION

OFFICIAL PUBLICATION

OFFICIAL PUBLICATION

NOTICE

Please take notice that Duke Energy Kentucky, Inc. has applied to the Kentucky Public Service Commission for approval to revise its Demand Side Management (DSM) rate for gas service and electric service for residential and commercial customers. Duke Energy Kentucky's current monthly DSM rate for residential gas customers is \$0.044741 per hundred cubic feet and for non-residential gas customers is \$0.000000 per hundred cubic feet. Duke Energy Kentucky's current monthly DSM rate for residential electric customers is \$0.007128 per kilowatt-hour and for non-residential customers is \$0.002758 per kilowatt-hour for distribution service and \$0.000049 per kilowatt-hour for transmission service.

Duke Energy Kentucky seeks approval to revise these rates as follows: Duke Energy Kentucky's monthly DSM rate for residential gas customers would decrease to (\$0.013241) per hundred cubic feet and for non-residential gas customers would remain at \$0.000000 per hundred cubic feet. Duke Energy Kentucky's monthly DSM rate for residential electric customers would increase to \$0.007967 per kilowatt-hour and for non-residential customers would decrease to \$0.002576 per kilowatt-hour for distribution service and would increase to \$0.000183 per kilowatt-hour for transmission service.

The rate contained in this notice is the rate proposed by Duke Energy Kentucky. However, the Public Service Commission may order a rate to be charged that differs from this proposed rate. Such action may result in a rate for consumers other than the rate in this notice. The foregoing rates reflect a proposed increase in electric revenues of approximately \$0.80 million or 0.25% over current total electric revenues and a decrease in gas revenues of approximately \$3.4 million or (4.00%) of current total gas revenues.

A typical residential gas customer using 70 ccf in a month will see a decrease of \$4.06 or (5.3%). A typical residential electric customer using 1000 kWh in a month will see an increase of \$0.84 or 0.95%. A typical non-residential electric customer using 40 kilowatts and 14,000 kWh will see a decrease of \$2.55 or (0.22%). A non-residential customer served at transmission voltage using 10,000 kilowatts and 4,000,000 kWh will see an increase of \$536.00 or 0.22%. Non-residential gas customers will see no change in their bills from this application.

Any corporation, association, body politic or person may by motion within thirty (30) days after publication or mailing of notice of the proposed rate changes, submit a written request to intervene to the Public Service Commission, 211 Sower Boulevard, P.O. Box 615, Frankfort, Kentucky 40602, and shall set forth the grounds for the request including the status and interest of the party. The intervention may be granted beyond the thirty (30) day period for good cause shown. Written comments regarding the proposed rate may be submitted to the Public Service Commission by mail or through the Public Service Commission's website. A copy of this application filed with the Public Service Commission is available for public inspection at Duke Energy Kentucky's office at 4580 Olympic Boulevard, Erlanger, Kentucky 41018 and on its website at <http://www.duke-energy.com>. This filing and any other related documents can be found on the Public Service Commission's website at <http://psc.ky.gov>.

LEGAL NOTICE

NOTICE is hereby given that the Kentucky Public Service Commission has scheduled a public hearing in a case styled "In the Matter of Application of Duke Energy Kentucky, Inc. for (1) A Certificate of Public Convenience and Necessity Authorizing the Construction of an Advanced Metering Infrastructure; (2) Request for Accounting Treatment; and (3) All Other Necessary Waivers, Approval, and Relief," Case No. 2016-00152, beginning Thursday, December 1, 2016, at 9:00 a.m. Eastern Daylight Time, at the Commission's offices, 211 Sower Boulevard, Frankfort, Kentucky for approval to replace and upgrade its existing metering infrastructure by constructing and installing a more advanced system of digital technologies including Advanced Metering Infrastructure for its electric and combination electric and

REQUEST FOR PROPOSAL

Proposals will be received by the Northern Kentucky Independent District Health Department (NKIDHD) on the date listed for the following:

PROPOSAL ITEM: PAYROLL - HUMAN RESOURCES PROCESSING OPENING

TIME: 12:00 PM Eastern Standard Time (synchronized at the following web-site): <http://www.time.gov>

LOCAL TIME

DATE: December 2, 2016

LOCATION NORTHERN KENTUCKY HEALTH DEPT
Office of Administration & Accounting
610 Medical Village Drive
Edgewood, KY 41017

Copies of this Solicitation and issued addenda may be obtained from George Moore by phone at (859) 344-5461, by fax at (859) 578-3689, or by e-mail at George.Moore@nkyihe.alth.org. Proposer shall submit the request prior to the time and date specified for the response deadline, and any and all requests must be made between the hours of 8:30 a.m. and 5:00 p.m. Proposals must be submitted in a sealed envelope or other sealed container, marked "PAYROLL/HR PROCESSING". Proposals will be opened and read aloud at 12:00 PM EST, local time. No oral, telegraphic, electronic, facsimile, or telephonic proposals or modifications will be accepted. The NKIDHD reserves the right to reject any and all proposals, to waive any informalities and to negotiate for the modifications of any proposal or accept that proposal which is deemed the most desirable and advantageous from the standpoint of customer value and may not, on its face, appear to be the lowest and best price. Proposer's authorized representatives may withdraw proposals only by written request received by George Moore before the Proposal Submittal Deadline. No proposal may be withdrawn for a period of ninety (90) days after the scheduled proposal opening date. At no time

Duke

OFFICIAL PUBLICATION OFFICIAL PUBLICATION OFFICIAL PUBLICATION

NOTICE

Please take notice that Duke Energy Kentucky, Inc. has applied to the Kentucky Public Service Commission for approval to revise its Demand Side Management (DSM) rate for gas service and electric service for residential and commercial customers. Duke Energy Kentucky's current monthly DSM rate for residential gas customers is \$0.044741 per hundred cubic feet and for non-residential gas customers is \$0.000000 per hundred cubic feet. Duke Energy Kentucky's current monthly DSM rate for residential electric customers is \$0.007128 per kilowatt-hour and for non-residential customers is \$0.002758 per kilowatt-hour for distribution service and \$0.000049 per kilowatt-hour for transmission service.

Duke Energy Kentucky seeks approval to revise these rates as follows: Duke Energy Kentucky's monthly DSM rate for residential gas customers would decrease to (\$0.013241) per hundred cubic feet and for non-residential gas customers would remain at \$0.000000 per hundred cubic feet. Duke Energy Kentucky's monthly DSM rate for residential electric customers would increase to \$0.007967 per kilowatt-hour and for non-residential customers would decrease to \$0.002578 per kilowatt-hour for distribution service and would increase to \$0.000183 per kilowatt-hour for transmission service.

The rate contained in this notice is the rate proposed by Duke Energy Kentucky. However, the Public Service Commission may order a rate to be charged that differs from this proposed rate. Such action may result in a rate for consumers other than the rate in this notice. The foregoing rates reflect a proposed increase in electric revenues of approximately \$0.80 million or 0.25% over current total electric revenues and a decrease in gas revenues of approximately \$3.4 million or (4.00%) of current total gas revenues.

A typical residential gas customer using 70 ccf in a month will see a decrease of \$4.06 or (5.3%). A typical residential electric customer using 1000 kWh in a month will see an increase of \$0.84 or 0.95%. A typical non-residential electric customer using 40 kilowatts and 14,000 kWh will see a decrease of \$2.55 or (0.22%). A non-residential customer served at transmission voltage using 10,000 kilowatts and 4,000,000 kWh will see an increase of \$536.00 or 0.22%. Non-residential gas customers will see no change in their bills from this application.

Any corporation, association, body politic or person may by motion within thirty (30) days after publication or mailing of notice of the proposed rate changes, submit a written request to intervene to the Public Service Commission, 211 Sower Boulevard, P.O. Box 615, Frankfort, Kentucky 40602, and shall set forth the grounds for the request including the status and interest of the party. The intervention may be granted beyond the thirty (30) day period for good cause shown. Written comments regarding the proposed rate may be submitted to the Public Service Commission by mail or through the Public Service Commission's website. A copy of this application filed with the Public Service Commission is available for public inspection at Duke Energy Kentucky's office at 4580 Olympic Boulevard, Erlanger, Kentucky 41018 and on its website at http://www.duke-energy.com. This filing and any other related documents can be found on the Public Service Commission's website at http://pac.ky.gov.

LEGAL NOTICE

NOTICE IS HEREBY GIVEN THAT THE FOLLOWING SETTLEMENTS HAVE BEEN PRESENTED TO THE CAMPBELL DISTRICT COURT. WRITTEN EXCEPTIONS TO THE BELOW STATEMENTS MUST BE FILED NO LATER THAN TWENTY DAYS FROM THE DATE OF THIS ADVERTISEMENT. IF NO EXCEPTIONS ARE FILED, SETTLEMENTS WILL BE CONFIRMED AND ORDERED RECORDED.

DECEASED	FIDUCIARY	SETTLEMENT
JULIET ENDA BETZ	THOMAS L. ROUSE	FINAL
RAYMOND E. ALFORD	CAROL L. DEMOSS & JOYCE A. ANDERSON	FINAL
STEVE STRASINGER	LARRY STRASINGER	FINAL
BETTY C. PENROD	JACQUELINE KELLY PENROD	FINAL
CHARLES D. SMITH	CHARLES E. SMITH	PARTIAL
MARY L. SHORT	ROSE A. CHALK	FINAL
BETTY LEE NORDHEIM	KATHLEEN TITHER WEBBER & ALEXIS WALDEN MURRAY	FORMAL
JULIE A. FARLEY	MONICA WINKLER & MATTHEW WINKLER	FINAL
TR U/W WILLIAM M. HIRST	FIFTH THIRD BANK	ANNUAL
BEVERLY JEAN KERN	PATRICIA JUSTICE	FINAL

EXCEPTIONS CAN BE MAILED TO: CAMPBELL COUNTY DISTRICT COURT
ATTN. PROBATE CLERK
330 YORK STREET
NEWPORT, KY 41071

CC 12/1/16

OFFICIAL PUBLICATION

OFFICIAL PUBLICATION

OFFICIAL PUBLICATION

NOTICE

Please take notice that Duke Energy Kentucky, Inc. has applied to the Kentucky Public Service Commission for approval to revise its Demand Side Management (DSM) rate for gas service and electric service for residential and commercial customers. Duke Energy Kentucky's current monthly DSM rate for residential gas customers is \$0.044741 per hundred cubic feet and for non-residential gas customers is \$0.000000 per hundred cubic feet. Duke Energy Kentucky's current monthly DSM rate for residential electric customers is \$0.007128 per kilowatt-hour and for non-residential customers is \$0.002758 per kilowatt-hour for distribution service and \$0.000049 per kilowatt-hour for transmission service.

Duke Energy Kentucky seeks approval to revise these rates as follows: Duke Energy Kentucky's monthly DSM rate for residential gas customers would decrease to (\$0.013241) per hundred cubic feet and for non-residential gas customers would remain at \$0.000000 per hundred cubic feet. Duke Energy Kentucky's monthly DSM rate for residential electric customers would increase to \$0.007967 per kilowatt-hour and for non-residential customers would decrease to \$0.002576 per kilowatt-hour for distribution service and would increase to \$0.000183 per kilowatt-hour for transmission service.

The rate contained in this notice is the rate proposed by Duke Energy Kentucky. However, the Public Service Commission may order a rate to be charged that differs from this proposed rate. Such action may result in a rate for consumers other than the rate in this notice. The foregoing rates reflect a proposed increase in electric revenues of approximately \$0.80 million or 0.25% over current total electric revenues and a decrease in gas revenues of approximately \$3.4 million or (4.00%) of current total gas revenues.

A typical residential gas customer using 70 ccf in a month will see a decrease of \$4.08 or (5.3%). A typical residential electric customer using 1000 kWh in a month will see an increase of \$0.84 or 0.95%. A typical non-residential electric customer using 40 kilowatts and 14,000 kWh will see a decrease of \$2.55 or (0.22%). A non-residential customer served at transmission voltage using 10,000 kilowatts and 4,000,000 kWh will see an increase of \$536.00 or 0.22%. Non-residential gas customers will see no change in their bills from this application.

Any corporation, association, body politic or person may by motion within thirty (30) days after publication or mailing of notice of the proposed rate changes, submit a written request to intervene to the Public Service Commission, 211 Sower Boulevard, P.O. Box 615, Frankfort, Kentucky 40602, and shall set forth the grounds for the request including the status and interest of the party. The intervention may be granted beyond the thirty (30) day period for good cause shown. Written comments regarding the proposed rate may be submitted to the Public Service Commission by mail or through the Public Service Commission's website. A copy of this application filed with the Public Service Commission is available for public inspection at Duke Energy Kentucky's office at 4580 Olympic Boulevard, Erlanger, Kentucky 41018 and on its website at <http://www.duke-energy.com>. This filing and any other related documents can be found on the Public Service Commission's website at <http://psc.ky.gov>.

NOTICE OF BOND SALE

Notice is hereby given that electronic bids will be received by the City of Highland Heights, Kentucky (the "City"), until 11:00 a.m., E.T. on December 14, 2016 (or at such later time and date announced at least forty-eight hours in advance via the BIDCOMP™/PARITY™ system) for the purchase of approximately \$5,035,000 of the City's General Obligation Refunding Bonds, Series 2017 (the "Bonds"). Alternatively, written sealed or facsimile bids for the Bonds by the designated time will be received by the Mayor, 175 Johns Hill Road, Highland Heights, Kentucky 41076 (FAX: (859) 441-8293).

The Bonds will be dated their date of initial delivery, will be issued as fully registered bonds in denominations in multiples of \$5,000 (within the same maturity), will mature on December 1 of the years 2017 through 2038 and are subject to redemption prior to their stated maturities as described in the Official Terms and Conditions of Bond Sale contained in the Preliminary Official Statement, to which reference is made for official terms relating to the sale of the Bonds. Electronic bids may be submitted via BIDCOMP™/PARITY™, in the manner described below.

Additional information, including the Preliminary Official Statement, the Official Terms and Conditions of Bond Sale and the Official Bid Form, may be obtained from the City's Financial Advisor, Ross, Sinclair & Associates, LLC, 325 West Main Street, Suite 300, Lexington, Kentucky 40507. Further information regarding BIDCOMP™/PARITY™ may be obtained from BIDCOMP™/PARITY™, 1359 Broadway - 2nd Floor, New York, NY 10018, Telephone: (800) 850-7422.

Sale of Bonds on tax-exempt basis, subject to approving le...

NOTICE

NOTICE is hereby given that the Kentucky Public Service Commission has scheduled a public hearing in a case styled "In the Matter of Application of Duke Energy Kentucky, Inc. for (1) A Certificate of Public Convenience and Necessity Authorizing the Construction of an Advanced Metering Infrastructure; (2) Request for Accounting Treatment; and (3) All Other Necessary Waivers, Approval, and Relief," Case No. 2016-00152, beginning Thursday, December 8, 2016, at 9:00 a.m. Eastern Daylight Time, at the Commission's offices, 211 Sower Boulevard, Frankfort, Kentucky for approval to replace and upgrade its existing metering infrastructure by constructing and installing a more advanced system of

Class A Delivery Drivers

— \$17.70/Hour to Start! —

\$19.20/Hour after 9 Months

- Local/Regional Runs • Full Benefits Package
- 50 Hours per Week • Layover Pay • Great Equipment!

Call Today! (859) 442-4685

Or Apply In Person

10295 Toebben Dr., Independence, KY 41051

Jr1

NOTICE

Please take notice that Duke Energy Kentucky, Inc. has applied to the Kentucky Public Service Commission for approval to revise its Demand Side Management (DSM) rate for gas service and electric service for residential and commercial customers. Duke Energy Kentucky's current monthly DSM rate for residential gas customers is \$0.044741 per hundred cubic feet and for non-residential gas customers is \$0.000000 per hundred cubic feet. Duke Energy Kentucky's current monthly DSM rate for residential electric customers is \$0.007128 per kilowatt-hour and for non-residential customers is \$0.002758 per kilowatt-hour for distribution service and \$0.000049 per kilowatt-hour for transmission service.

Duke Energy Kentucky seeks approval to revise these rates as follows: Duke Energy Kentucky's monthly DSM rate for residential gas customers would decrease to (\$0.013241) per hundred cubic feet and for non-residential gas customers would remain at \$0.000000 per hundred cubic feet. Duke Energy Kentucky's monthly DSM rate for residential electric customers would increase to \$0.007967 per kilowatt-hour and for non-residential customers would decrease to \$0.002578 per kilowatt-hour for distribution service and would increase to \$0.000183 per kilowatt-hour for transmission service.

The rate contained in this notice is the rate proposed by Duke Energy Kentucky. However, the Public Service Commission may order a rate to be charged that differs from this proposed rate. Such action may result in a rate for consumers other than the rate in this notice. The foregoing rates reflect a proposed increase in electric revenues of approximately \$0.80 million or 0.25% over current total electric revenues and a decrease in gas revenues of approximately \$3.4 million or (4.00%) of current total gas revenues.

A typical residential gas customer using 70 ccf in a month will see a decrease of \$4.06 or (5.3%). A typical residential electric customer using 1000 kWh in a month will see an increase of \$0.84 or 0.95%. A typical non-residential electric customer using 40 kilowatts and 14,000 kWh will see a decrease of \$2.55 or (0.22%). A non-residential customer served at transmission voltage using 10,000 kilowatts and 4,000,000 kWh will see an increase of \$536.00 or 0.22%. Non-residential gas customers will see no change in their bills from this application.

Any corporation, association, body politic or person may by motion within thirty (30) days after publication or mailing of notice of the proposed rate changes, submit a written request to intervene to the Public Service Commission, 211 Sower Boulevard, P.O. Box 615, Frankfort, Kentucky 40602, and shall set forth the grounds for the request including the status and interest of the party. The intervention may be granted beyond the thirty (30) day period for good cause shown. Written comments regarding the proposed rate may be submitted to the Public Service Commission by mail or through the Public Service Commission's website. A copy of this application filed with the Public Service Commission is available for public inspection at Duke Energy Kentucky's office at 4580 Olympic Boulevard, Erlanger, Kentucky 41018 and on its website at <http://www.duke-energy.com>. This filing and any other related documents can be found on the Public Service Commission's website at <http://psc.ky.gov>.

GALLATIN 11/9/16

ly
B
S-
n.
e
r
r
S
y
B
r
g
d
S
r
S
l

NOTICE

Please take notice that Duke Energy Kentucky, Inc. has applied to the Kentucky Public Service Commission for approval to revise its Demand Side Management (DSM) rate for gas service and electric service for residential and commercial customers. Duke Energy Kentucky's current monthly DSM rate for residential gas customers is \$0.044741 per hundred cubic feet and for non-residential gas customers is \$0.000000 per hundred cubic feet. Duke Energy Kentucky's current monthly DSM rate for residential electric customers is \$0.007128 per kilowatt-hour and for non-residential customers is \$0.002758 per kilowatt-hour for distribution service and \$0.000049 per kilowatt-hour for transmission service.

Duke Energy Kentucky seeks approval to revise these rates as follows: Duke Energy Kentucky's monthly DSM rate for residential gas customers would decrease to (\$0.013241) per hundred cubic feet and for non-residential gas customers would remain at \$0.000000 per hundred cubic feet. Duke Energy Kentucky's monthly DSM rate for residential electric customers would increase to \$0.007967 per kilowatt-hour and for non-residential customers would decrease to \$0.002576 per kilowatt-hour for distribution service and would increase to \$0.000183 per kilowatt-hour for transmission service.

The rate contained in this notice is the rate proposed by Duke Energy Kentucky. However, the Public Service Commission may order a rate to be charged that differs from this proposed rate. Such action may result in a rate for consumers other than the rate in this notice. The foregoing rates reflect a proposed increase in electric revenues of approximately \$0.80 million or 0.25% over current total electric revenues and a decrease in gas revenues of approximately \$3.4 million or (4.00%) of current total gas revenues.

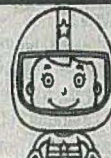
A typical residential gas customer using 70 ccf in a month will see a decrease of \$4.06 or (5.3%). A typical residential electric customer using 1000 kWh in a month will see an increase of \$0.84 or 0.95%. A typical non-residential electric customer using 40 kilowatts and 14,000 kWh will see a decrease of \$2.55 or (0.22%). A non-residential customer served at transmission voltage using 10,000 kilowatts and 4,000,000 kWh will see an increase of \$536.00 or 0.22%. Non-residential gas customers will see no change in their bills from this application.

Any corporation, association, body politic or person may by motion within thirty (30) days after publication or mailing of notice of the proposed rate changes, submit a written request to intervene to the Public Service Commission, 211 Sower Boulevard, P.O. Box 615, Frankfort, Kentucky 40602, and shall set forth the grounds for the request including the status and interest of the party. The intervention may be granted beyond the thirty (30) day period for good cause shown. Written comments regarding the proposed rate may be submitted to the Public Service Commission by mail or through the Public Service Commission's website. A copy of this application filed with the Public Service Commission is available for public inspection at Duke Energy Kentucky's office at 4580 Olympic Boulevard, Erlanger, Kentucky 41018 and on its website at <http://www.duke-energy.com>. This filing and any other related documents can be found on the Public Service Commission's website at <http://psc.ky.gov>.

GALLATIN 11/16/16

Kidz Maze Mania

Help the driver find
the race car at the



Dulle

NOTICE

Please take notice that Duke Energy Kentucky, Inc. has applied to the Kentucky Public Service Commission for approval to revise its Demand Side Management (DSM) rate for gas service and electric service for residential and commercial customers. Duke Energy Kentucky's current monthly DSM rate for residential gas customers is \$0.044741 per hundred cubic feet and for non-residential gas customers is \$0.000000 per hundred cubic feet. Duke Energy Kentucky's current monthly DSM rate for residential electric customers is \$0.007128 per kilowatt-hour and for non-residential customers is \$0.002758 per kilowatt-hour for distribution service and \$0.000049 per kilowatt-hour for transmission service.

Duke Energy Kentucky seeks approval to revise these rates as follows: Duke Energy Kentucky's monthly DSM rate for residential gas customers would decrease to (\$0.013241) per hundred cubic feet and for non-residential gas customers would remain at \$0.000000 per hundred cubic feet. Duke Energy Kentucky's monthly DSM rate for residential electric customers would increase to \$0.007987 per kilowatt-hour and for non-residential customers would decrease to \$0.002576 per kilowatt-hour for distribution service and would increase to \$0.000183 per kilowatt-hour for transmission service.

The rate contained in this notice is the rate proposed by Duke Energy Kentucky. However, the Public Service Commission may order a rate to be charged that differs from this proposed rate. Such action may result in a rate for consumers other than the rate in this notice. The foregoing rates reflect a proposed increase in electric revenues of approximately \$0.80 million or 0.25% over current total electric revenues and a decrease in gas revenues of approximately \$3.4 million or (4.00%) of current total gas revenues.

A typical residential gas customer using 70 ccf in a month will see a decrease of \$4.06 or (5.3%). A typical residential electric customer using 1000 kWh in a month will see an increase of \$0.84 or 0.95%. A typical non-residential electric customer using 40 kilowatts and 14,000 kWh will see a decrease of \$2.55 or (0.22%). A non-residential customer served at transmission voltage using 10,000 kilowatts and 4,000,000 kWh will see an increase of \$536.00 or 0.22%. Non-residential gas customers will see no change in their bills from this application.

Any corporation, association, body politic or person may by motion within thirty (30) days after publication or mailing of notice of the proposed rate changes, submit a written request to intervene to the Public Service Commission, 211 Sower Boulevard, P.O. Box 615, Frankfort, Kentucky 40602, and shall set forth the grounds for the request including the status and interest of the party. The intervention may be granted beyond the thirty (30) day period for good cause shown. Written comments regarding the proposed rate may be submitted to the Public Service Commission by mail or through the Public Service Commission's website. A copy of this application filed with the Public Service Commission is available for public inspection at Duke Energy Kentucky's office at 4580 Olympic Boulevard, Erlanger, Kentucky 41018 and on its website at <http://www.duke-energy.com>. This filing and any other related documents can be found on the Public Service Commission's website at <http://psc.ky.gov>.

PUBLIC NOTICES

PUBLIC NOTICE: The Kentucky State Police will be conducting traffic safety checkpoints in the counties of Oldham, Trimble, Henry, Owen, Carroll and Gallatin during the month of December 2016.

The intent of a traffic safety checkpoint is to provide for high visibility public safety service, focusing on vehicular equipment deficiencies, confirming appropriate registration of vehicles and the licensing of drivers. Violation of law or other public safety

PUBLIC NOTICE: The public will take notice that the undersigned has qualified as the executor of the estate of Mary Jo Mylor, deceased. All persons indebted to, will make payment to, and all persons having claims upon said estate will make their claims as required by law.

Martin Lee Mylor
P.O. Box 683
Warsaw, KY 41095
47-1c

PUBLIC NOTICE: The District School Report Card Summary Report provides a summary of the district data results for the most recent test results and other non-academic achievement. The data is disaggregated by gender and race. Included in the academic data are the percentage of students who perform at the proficient or distinguished level in each content area or meet benchmarks. The Graduation Rate indicates the percentage of students who graduate on time in four years. Other indicators included in the Summary Report are Attendance, Retention Rate, Student Transition to adult Life, Learning Environment, and Parental Involvement. For more information about the School Report Cards, please visit <http://openhouse.education.ky.gov/>.

Filed Network



ADVERTISING DEADLINES

Grant County Express before 3 p.m. Wednesday
Grant County News before 3 p.m. Monday
 Let us know on the first time your ad runs when there are any mistakes.
 Deadlines change during holidays.

NOTICE

Please take notice that Duke Energy Kentucky, Inc. has applied to the Kentucky Public Service Commission for approval to revise its Demand Side Management (DSM) rate for gas service and electric service for residential and commercial customers. Duke Energy Kentucky's current monthly DSM rate for residential gas customers is \$0.044741 per hundred cubic feet and for non-residential gas customers is \$0.000000 per hundred cubic feet. Duke Energy Kentucky's current monthly DSM rate for residential electric customers is \$0.007128 per kilowatt-hour and for non-residential customers is \$0.002758 per kilowatt-hour for distribution service and \$0.000049 per kilowatt-hour for transmission service.

Duke Energy Kentucky seeks approval to revise these rates as follows: Duke Energy Kentucky's monthly DSM rate for residential gas customers would decrease to (\$0.013241) per hundred cubic feet and for non-residential gas customers would remain at \$0.000000 per hundred cubic feet. Duke Energy Kentucky's monthly DSM rate for residential electric customers would increase to \$0.007967 per kilowatt-hour and for non-residential customers would decrease to \$0.002576 per kilowatt-hour for distribution service and would increase to \$0.000183 per kilowatt-hour for transmission service.

The rate contained in this notice is the rate proposed by Duke Energy Kentucky. However, the Public Service Commission may order a rate to be charged that differs from this proposed rate. Such action may result in a rate for consumers other than the rate in this notice. The foregoing rates reflect a proposed increase in electric revenues of approximately \$0.80 million or 0.25% over current total electric revenues and a decrease in gas revenues of approximately \$3.4 million or (4.00%) of current total gas revenues.

A typical residential gas customer using 70 ccf in a month will see a decrease of \$4.06 or (5.3%). A typical residential electric customer using 1000 kWh in a month will see an increase of \$0.84 or 0.95%. A typical non-residential electric customer using 40 kilowatts and 14,000 kWh will see a decrease of \$2.55 or (0.22%). A non-residential customer served at transmission voltage using 10,000 kilowatts and 4,000,000 kWh will see an increase of \$536.00 or 0.22%. Non-residential gas customers will see no change in their bills from this application.

Any corporation, association, body politic or person may by motion within thirty (30) days after publication or mailing of notice of the proposed rate changes, submit a written request to intervene to the Public Service Commission, 211 Sower Boulevard, P.O. Box 615, Frankfort, Kentucky 40602, and shall set forth the grounds for the request including the status and interest of the party. The intervention may be granted beyond the thirty (30) day period for good cause shown. Written comments regarding the proposed rate may be submitted to the Public Service Commission by mail or through the Public Service Commission's website. A copy of this application filed with the Public Service Commission is available for public inspection at Duke Energy Kentucky's office at 4580 Olympic Boulevard, Erlanger, Kentucky 41018 and on its website at <http://www.duke-energy.com>. This filing and any other related documents can be found on the Public Service Commission's website at <http://psc.ky.gov>.

N1110 E11/24/16

Studio Apartment available
Lower Deposit
859-884-4888
 N1110X1114 E11/24/16

RENTAL PROPERTY

COUNTRY LIVING APARTMENTS
 859-428-2466

To advertise call 824-3343 and ask for John Seebold or e-mail jseebold@grantky.com

Locust Ridge Apartments
 Now renting
 1 2 & 3 bedroom

PINEWOOD INN ONE PERSON ONLY
 \$90-\$120 WEEK
 Clean, Quiet, Affordable
 No Pets - \$150 Deposit
 CALL FOR DETAILS
859-823-8201

NOTICE

Please take notice that Duke Energy Kentucky, Inc. has applied to the Kentucky Public Service Commission for approval to revise its Demand Side Management (DSM) rate for gas service and electric service for residential and commercial customers. Duke Energy Kentucky's current monthly DSM rate for residential gas customers is \$0.044741 per hundred cubic feet and for non-residential gas customers is \$0.000000 per hundred cubic feet. Duke Energy Kentucky's current monthly DSM rate for residential electric customers is \$0.007128 per kilowatt-hour and for non-residential customers is \$0.002758 per kilowatt-hour for distribution service and \$0.000049 per kilowatt-hour for transmission service.

Duke Energy Kentucky seeks approval to revise these rates as follows: Duke Energy Kentucky's monthly DSM rate for residential gas customers would decrease to (\$0.013241) per hundred cubic feet and for non-residential gas customers would remain at \$0.000000 per hundred cubic feet. Duke Energy Kentucky's monthly DSM rate for residential electric customers would increase to \$0.007967 per kilowatt-hour and for non-residential customers would decrease to \$0.002576 per kilowatt-hour for distribution service and would increase to \$0.000183 per kilowatt-hour for transmission service.

The rate contained in this notice is the rate proposed by Duke Energy Kentucky. However, the Public Service Commission may order a rate to be charged that differs from this proposed rate. Such action may result in a rate for consumers other than the rate in this notice. The foregoing rates reflect a proposed increase in electric revenues of approximately \$0.80 million or 0.25% over current total electric revenues and a decrease in gas revenues of approximately \$3.4 million or (4.00%) of current total gas revenues.

A typical residential gas customer using 70 ccf in a month will see a decrease of \$4.06 or (5.3%). A typical residential electric customer using 1000 kWh in a month will see an increase of \$0.84 or 0.96%. A typical non-residential electric customer using 40 kilowatts and 14,000 kWh will see a decrease of \$2.55 or (0.22%). A non-residential customer served at transmission voltage using 10,000 kilowatts and 4,000,000 kWh will see an increase of \$536.00 or 0.22%. Non-residential gas customers will see no change in their bills from this application.

Any corporation, association, body politic or person may by motion within thirty (30) days after publication or mailing of notice of the proposed rate changes, submit a written request to intervene to the Public Service Commission, 211 Sower Boulevard, P.O. Box 615, Frankfort, Kentucky 40602, and shall set forth the grounds for the request including the status and interest of the party. The intervention may be granted beyond the thirty (30) day period for good cause shown. Written comments regarding the proposed rate may be submitted to the Public Service Commission by mail or through the Public Service Commission's website. A copy of this application filed with the Public Service Commission is available for public inspection at Duke Energy Kentucky's office at 4580 Olympic Boulevard, Erlanger, Kentucky 41018 and on its website at <http://www.duke-energy.com>. This filing and any other related documents can be found on the Public Service Commission's website at <http://psc.ky.gov>.

N1110 E11/24/16

COMMONWEALTH OF KENTUCKY
UNIFIED COURT OF JUSTICE
GRANT CIRCUIT COURT
CIVIL ACTION NO.: 16-CI-00259

VANDERBILT MORTGAGE AND FINANCE, INC.

PLAINTIFF

VS.

NOTICE OF COMMISSIONER'S SALE

LONNIE A. KING, ET AL

DEFENDANTS

** ** *

By virtue of a Judgment and Order of Sale entered in the Grant Circuit Court on November 10, 2016, I will sell at public auction at the **Judicial Center Lobby, 224 South Main Street, Williamstown, Kentucky**, the property described herein located in Grant County, Kentucky, on **WEDNESDAY, December 7, 2016**, at the hour of **11:00 a.m.**, prevailing time, and more particularly described as follows:

BEING the same property conveyed to Lonnie A. King by virtue of Deed recorded in Deed Book 298, Page 792, of the Grant County Clerk's records, Williamstown, Kentucky.

Property Address: **5825 Baton Rouge Road, Williamstown, KY**
Map #025-00-00-055.00

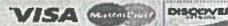
There is a mobile home, doublewide and/or manufactured home included in the sale.
Announcements made on the day of sale take precedence over printed material.

The amount of money to be raised by this sale is the principal sum of \$125,472.48, together with accrued interest thereon of \$6,340.23, late charges of \$100.00, escrow of \$1,118.10, advancements for protection of the property in the amount of \$2,398.60, attorney's fees of \$1,605.00, and court costs and service fees of \$747.63. After application and credit of unapplied funds in the amount of \$480.97 by the Plaintiff to the subject indebtedness, Plaintiff is hereby awarded an (in rem) judgment in the amount of \$137,301.07 as of October 14, 2016, plus interest thereafter at the Note rate of 6.50% per annum until paid in full.

The real estate shall be sold on the terms of 10% cash at the time of the sale, except that said deposit shall be waived if the Plaintiff is the successful bidder at the sale, and the balance on a credit of thirty (30) days

GRANT 11/24/16

ified Network



ADVERTISING
ADLINES

Grant County Express before 3 p.m. Wednesday
Grant County News before 3 p.m. Monday
Let us know on the first time your ad runs when there are any mistakes.
Deadlines change during holidays.

LEGAL NOTICE

NOTICE

Please take notice that Duke Energy Kentucky, Inc. has applied to the Kentucky Public Service Commission for approval to revise its Demand Side Management (DSM) rate for gas service and electric service for residential and commercial customers. Duke Energy Kentucky's current monthly DSM rate for residential gas customers is \$0.044741 per hundred cubic feet and for non-residential gas customers is \$0.000000 per hundred cubic feet. Duke Energy Kentucky's current monthly DSM rate for residential electric customers is \$0.007128 per kilowatt-hour and for non-residential customers is \$0.002758 per kilowatt-hour for distribution service and \$0.000049 per kilowatt-hour for transmission service.

Duke Energy Kentucky seeks approval to revise these rates as follows: Duke Energy Kentucky's monthly DSM rate for residential gas customers would decrease to (\$0.013241) per hundred cubic feet and for non-residential gas customers would remain at \$0.000000 per hundred cubic feet. Duke Energy Kentucky's monthly DSM rate for residential electric customers would increase to \$0.007967 per kilowatt-hour and for non-residential customers would decrease to \$0.002576 per kilowatt-hour for distribution service and would increase to \$0.000183 per kilowatt-hour for transmission service.

The rate contained in this notice is the rate proposed by Duke Energy Kentucky. However, the Public Service Commission may order a rate to be charged that differs from this proposed rate. Such action may result in a rate for consumers other than the rate in this notice. The foregoing rates reflect a proposed increase in electric revenues of approximately \$0.80 million or 0.25% over current total electric revenues and a decrease in gas revenues of approximately \$3.4 million or (4.00%) of current total gas revenues.

A typical residential gas customer using 70 ccf in a month will see a decrease of \$4.06 or (5.3%). A typical residential electric customer using 1000 kWh in a month will see an increase of \$0.84 or 0.95%. A typical non-residential electric customer using 40 kilowatts and 14,000 kWh will see a decrease of \$2.55 or (0.22%). A non-residential customer served at transmission voltage using 10,000 kilowatts and 4,000,000 kWh will see an increase of \$536.00 or 0.22%. Non-residential gas customers will see no change in their bills from this application.

Any corporation, association, body politic or person may by motion within thirty (30) days after publication or mailing of notice of the proposed rate changes, submit a written request to intervene to the Public Service Commission, 211 Sower Boulevard, P.O. Box 615, Frankfort, Kentucky 40602, and shall set forth the grounds for the request including the status and interest of the party. The intervention may be granted beyond the thirty (30) day period for good cause shown. Written comments regarding the proposed rate may be submitted to the Public Service Commission by mail or through the Public Service Commission's website. A copy of this application filed with the Public Service Commission is available for public inspection at Duke Energy Kentucky's office at 4580 Olympic Boulevard, Erlanger, Kentucky 41018 and on its website at <http://www.duke-energy.com>. This filing and any other related documents can be found on the Public Service Commission's website at <http://psc.ky.gov>.

N1110 E11/24/16

RENTAL PROPERTY

Check us out at www.grantky.com



Advertise HERE
by calling
859-824-3343
Grant County News,
Express & Marketplace
1x1" ad for only
\$19.42 per week

PINEWOOD INN ONE PERSON ONLY

\$90-\$120 WEEK
Clean, Quiet, Affordable
No Pets - \$150 Deposit
CALL FOR DETAILS
859-823-8201

01/27/2016 11:00 AM

Duke

OFFICIAL PUBLICATION

OFFICIAL PUBLICATION

OFFICIAL PUBLICATION

NOTICE

Please take notice that Duke Energy Kentucky, Inc. has applied to the Kentucky Public Service Commission for approval to revise its Demand Side Management (DSM) rate for gas service and electric service for residential and commercial customers. Duke Energy Kentucky's current monthly DSM rate for residential gas customers is \$0.044741 per hundred cubic feet and for non-residential gas customers is \$0.000000 per hundred cubic feet. Duke Energy Kentucky's current monthly DSM rate for residential electric customers is \$0.007128 per kilowatt-hour and for non-residential customers is \$0.002758 per kilowatt-hour for distribution service and \$0.000049 per kilowatt-hour for transmission service.

Duke Energy Kentucky seeks approval to revise these rates as follows: Duke Energy Kentucky's monthly DSM rate for residential gas customers would decrease to (\$0.013241) per hundred cubic feet and for non-residential gas customers would remain at \$0.000000 per hundred cubic feet. Duke Energy Kentucky's monthly DSM rate for residential electric customers would increase to \$0.007967 per kilowatt-hour and for non-residential customers would decrease to \$0.002576 per kilowatt-hour for distribution service and would increase to \$0.000183 per kilowatt-hour for transmission service.

The rate contained in this notice is the rate proposed by Duke Energy Kentucky. However, the Public Service Commission may order a rate to be charged that differs from this proposed rate. Such action may result in a rate for consumers other than the rate in this notice. The foregoing rates reflect a proposed increase in electric revenues of approximately \$0.80 million or 0.25% over current total electric revenues and a decrease in gas revenues of approximately \$3.4 million or (4.00%) of current total gas revenues.

A typical residential gas customer using 70 ccf in a month will see a decrease of \$4.06 or (5.3%). A typical residential electric customer using 1000 kWh in a month will see an increase of \$0.84 or 0.95%. A typical non-residential electric customer using 40 kilowatts and 14,000 kWh will see a decrease of \$2.55 or (0.22%). A non-residential customer served at transmission voltage using 10,000 kilowatts and 4,000,000 kWh will see an increase of \$536.00 or 0.22%. Non-residential gas customers will see no change in their bills from this application.

Any corporation, association, body politic or person may by motion within thirty (30) days after publication or mailing of notice of the proposed rate changes, submit a written request to intervene to the Public Service Commission, 211 Sower Boulevard, P.O. Box 615, Frankfort, Kentucky 40602, and shall set forth the grounds for the request including the status and interest of the party. The intervention may be granted beyond the thirty (30) day period for good cause shown. Written comments regarding the proposed rate may be submitted to the Public Service Commission by mail or through the Public Service Commission's website. A copy of this application filed with the Public Service Commission is available for public inspection at Duke Energy Kentucky's office at 4580 Olympic Boulevard, Erlanger, Kentucky 41018 and on its website at <http://www.duke-energy.com>. This filing and any other related documents can be found on the Public Service Commission's website at <http://psc.ky.gov>.

OFFICIAL PUBLICATION

LEGAL NOTICE

NOTICE is hereby given that the Kentucky Public Service Commission has scheduled a public hearing in a case styled "In the Matter of Application of Duke Energy Kentucky, Inc. for (1) A Certificate of Public Convenience and Necessity Authorizing the Construction of an Advanced Metering Infrastructure; (2) Request for Accounting Treatment; and (3) All Other Necessary Waivers, Approval, and Relief," Case No. 2016-00152, beginning Thursday, December 1, 2016, at 9:00 a.m. Eastern Daylight Time, at the Commission's offices, 211 Sower Boulevard, Frankfort, Kentucky for approval to replace and upgrade its existing metering infrastructure by constructing and installing a

REQUEST FOR PROPOSAL

Proposals will be received by the Northern Kentucky Independent District Health Department (NKIDHD) on the date listed for the following:

PROPOSAL ITEM: PAYROLL - HUMAN RESOURCES PROCESSING OPENING

TIME: 12:00 PM Eastern Standard Time (synchronized at the following web-site): <http://www.time.gov>

LOCAL TIME

DATE: December 2, 2016

**LOCATION NORTHERN KENTUCKY HEALTH DEPT
Office of Administration & Accounting
610 Medical Village Drive
Edgewood, KY 41017**

Copies of this Solicitation and issued addenda may be obtained from George Moore by phone at (859) 344-5461, by fax at (859) 578-3689, or by e-mail at George.Moore@nkyhealth.org. Proposer shall submit the request prior to the time and date specified for the response deadline, and any and all requests must be made between the hours of 8:30 a.m. and 5:00 p.m. Proposals must be submitted in a sealed envelope or other sealed container, marked "PAYROLL/HR PROCESSING". Proposals will be opened and read aloud at 12:00 PM EST, local time. No oral, telegraphic, electronic, facsimile, or telephonic proposals or modifications will be accepted. The NKIDHD reserves the right to reject any and all proposals, to waive any informalities and to negotiate for the modifications of any proposal or accept that proposal which is deemed the most desirable and advantageous from the standpoint of customer value and may not, on its face, appear to be the lowest and best price. Proposer's authorized representatives may withdraw proposals only by written request received by George Moore before the Proposal Submittal Deadline. No proposal may be withdrawn for a period of ninety (90) days after the scheduled proposal opening date. At no time

KENTON

11/24/14

OFFICIAL PUBLICATION

OFFICIAL PUBLICATION

OFFICIAL PUBLICATION

NOTICE

Please take notice that Duke Energy Kentucky, Inc. has applied to the Kentucky Public Service Commission for approval to revise its Demand Side Management (DSM) rate for gas service and electric service for residential and commercial customers. Duke Energy Kentucky's current monthly DSM rate for residential gas customers is \$0.044741 per hundred cubic feet and for non-residential gas customers is \$0.000000 per hundred cubic feet. Duke Energy Kentucky's current monthly DSM rate for residential electric customers is \$0.007128 per kilowatt-hour and for non-residential customers is \$0.002758 per kilowatt-hour for distribution service and \$0.000049 per kilowatt-hour for transmission service.

Duke Energy Kentucky seeks approval to revise these rates as follows: Duke Energy Kentucky's monthly DSM rate for residential gas customers would decrease to (\$0.013241) per hundred cubic feet and for non-residential gas customers would remain at \$0.000000 per hundred cubic feet. Duke Energy Kentucky's monthly DSM rate for residential electric customers would increase to \$0.007967 per kilowatt-hour and for non-residential customers would decrease to \$0.002576 per kilowatt-hour for distribution service and would increase to \$0.000183 per kilowatt-hour for transmission service.

The rate contained in this notice is the rate proposed by Duke Energy Kentucky. However, the Public Service Commission may order a rate to be charged that differs from this proposed rate. Such action may result in a rate for consumers other than the rate in this notice. The foregoing rates reflect a proposed increase in electric revenues of approximately \$0.80 million or 0.25% over current total electric revenues and a decrease in gas revenues of approximately \$3.4 million or (4.00%) of current total gas revenues.

A typical residential gas customer using 70 ccf in a month will see a decrease of \$4.06 or (5.3%). A typical residential electric customer using 1000 kWh in a month will see an increase of \$0.84 or 0.95%. A typical non-residential electric customer using 40 kilowatts and 14,000 kWh will see a decrease of \$2.55 or (0.22%). A non-residential customer served at transmission voltage using 10,000 kilowatts and 4,000,000 kWh will see an increase of \$536.00 or 0.22%. Non-residential gas customers will see no change in their bills from this application.

Any corporation, association, body politic or person may by motion within thirty (30) days after publication or mailing of notice of the proposed rate changes, submit a written request to intervene to the Public Service Commission, 211 Sower Boulevard, P.O. Box 615, Frankfort, Kentucky 40602, and shall set forth the grounds for the request including the status and interest of the party. The intervention may be granted beyond the thirty (30) day period for good cause shown. Written comments regarding the proposed rate may be submitted to the Public Service Commission by mail or through the Public Service Commission's website. A copy of this application filed with the Public Service Commission is available for public inspection at Duke Energy Kentucky's office at 4580 Olympic Boulevard, Erlanger, Kentucky 41018 and on its website at <http://www.duke-energy.com>. This filing and any other related documents can be found on the Public Service Commission's website at <http://psc.ky.gov>.

PUBLIC NOTICE

The following storage units from Stronghold of Kentucky will be sold at public auction by Don Bates Auctioneer's, at 3700 Holly Lane, Erlanger, Kentucky, 41018 on **November 28, 2016 at 10:00 A.M.** and will continue until all items are sold.

- Unit 275, Jerry Bernstein, 3458 Forest View Dr, Union Ky 41091
- Unit 24, Willie Scharf, 571 Garner Dr Covington, Ky 41015
- Unit 243, Deborah Owens, P.O. 641, Florence, Ky 41022
- Unit 240, Deborah Owens, P.O. 641, Florence, Ky 41022
- 502GOM, Nov 17, 24, '16 #1703261

CINCINNATI.com

Garage & Yard Sale

VISIT: cincinnati.com/classifieds
TO PLACE YOUR AD



Great Buys

Garage Sales 
neighborly deals...

 **Estate Sales**



Rare Beatles Collection from
1964 Program Magazine

 **Events & Fairs**

ATTENTION!

Florence, 7500 Turfway Road,
Sat Nov. 26 10-4 Holiday Market-
place inside Turfway Park (4th fir).
60+ vendors & crafters, raffles & si-
lent auction benefit Lovesome
Stables FREE.

UPDATED
ALL
DAY.
NOW THAT'S
REFRESHING

OFFICIAL PUBLICATION OFFICIAL PUBLICATION OFFICIAL PUBLICATION

NOTICE
Please take notice that Duke Energy Kentucky, Inc. has applied to the Kentucky Public Service Commission for approval to revise its Demand Side Management (DSM) rate for gas service and electric service for residential and commercial customers.

Duke Energy Kentucky seeks approval to revise these rates as follows: Duke Energy Kentucky's monthly DSM rate for residential gas customers would decrease to \$0.013241 per hundred cubic feet and for non-residential gas customers would remain at \$0.000000 per hundred cubic feet.

The rate contained in this notice is the rate proposed by Duke Energy Kentucky. However, the Public Service Commission may order a rate to be changed that differs from this proposed rate.

A typical residential gas customer using 70 cf in a month will see a decrease of \$4.06 or (5.09%). A typical residential electric customer using 1000 kWh in a month will see an increase of \$0.94 or (0.89%).

Any corporation, association, body politic or person may by motion within thirty (30) days after publication or filing of notice of proposed rate changes, submit a written request to intervene in the Public Service Commission, 211 Bower Boulevard, P.O. Box 915, Frankfort, Kentucky 40602, and shall set forth the grounds for the request including the status and interest of the party.

Domestic Pets

Dog, German Shepherd, Male and Female, \$450.00, 9 weeks, Black and Tan German Shepherd puppies available to take home now - 8 weeks old. Both male and female available. Well socialized family dogs. Pure bred with both parents on premises. Non-registered. First shots and vet exam completed. \$37-304-9715 (937)304-9715 Wolf-obsglobal.net

Domestic Pets

Dog, Pure bred German Shepherd, male or female, \$800, 6 weeks, black/tan and sable black/tan, Calm, playful, caring, wanting to run! Pure bred German Shepherd pups, AKC registrable, good looks, calm temperament, beautiful puppies, vent, call, or email for pictures. Ready to go Dec. 6th! Can hold longer (513)763-0794 jdstapleton93@yahoo.com

FIND GOOD HELP! Post jobs. WANT CLASSIFIEDS online at dndmail.com ENQUIRER MEDIA

NOTICE

NOTICE is hereby given that the Kentucky Public Service Commission has scheduled a public hearing in a case styled "In the Matter of Application of Duke Energy Kentucky, Inc. for (1) A Certificate of Public Convenience and Necessity Authorizing the Construction of an Advanced Metering Infrastructure; (2) Request for Accounting Treatment; and (3) All Other Necessary Waivers, Approvals, and Relief; Case No. 2016-00182, beginning Thursday, December 8, 2016, at 9:00 a.m. Eastern Daylight Time, at the Commission's offices, 211 Bower Boulevard, Frankfort, Kentucky for approval to replace and upgrade its existing metering infrastructure by constructing and installing a more advanced system of digital technologies including Advanced Metering Infrastructure for its electric and combined electric and natural gas operations and an Automated Meter Reading Infrastructure for its gas only operations. This hearing will be streamed live and may be viewed on the PSC website, psc.ky.gov.

INVITATION TO BID

PROJECT: Wedgewood Drive and Clubhouse Drive Water Main Replacement City of Independence, Kantan County, Kentucky

SEALED BIDS WILL BE RECEIVED AT: Northern Kentucky Water District (Owner) 2833 Crescent Springs Road P.O. Box 1849 Erlanger, Kentucky 41018

UNTIL: Date: December 14, 2016 Time: 2:00 PM (Local Time)

All bids must be in accordance with the instructions to Bidders and Contract Documents on file, and available for examination at:

The proposed Work is generally described as follows: Construction of approximately 2,410 linear feet of 8" PVC water main together with the appurtenances and related work along Wedgewood Drive (Turkeyfoot Road to House and Clubhouse Drive (Turkeyfoot Road to Pearl Drive) in the City of Independence, Kantan County, Kentucky.

All Bids must be in accordance with the instructions to Bidders and Contract Documents on file, and available for examination at:

Northern Kentucky Water District (Owner) 2833 Crescent Springs Road Erlanger, Kentucky 41018 CT Consultants, Inc. 2161 Chamber Center Drive Fort Mitchell, KY 41017 Phone: 859-438-4544

Copies of the Bidding Documents may be obtained from the office of CT Consultants at the address indicated herein. Charges for all documents obtained will be made on the following basis:

Table with 2 columns: Item, Charge. Complete set of Bidding Documents (Mailing and Handling (U.S. Mail) (if requested)) \$ 45.00 \$ 15.00

Charges for Bidding Documents and mailings and handling, if applicable, will not be refunded.

Bids will be received on a unit price and/or lump sum basis as described in the Contract Documents.

Bid security, in the form of a certified check or a Bid Bond (insuring/bonding company shall be rated "A" by A.M. Best) in the amount of ten percent (10%) of the maximum total bid price, must accompany each Bid.

The Successful Bidder will be required to furnish a Construction Payment Bond and a Construction Performance Bond (insuring/bonding company shall be rated "A" by A.M. Best) as security for the faithful performance of the contract and the payment of all bills and obligations arising from the performance of the Contract.

Contractor and all Subcontractors will be required to conform to the labor standards set forth in the Contract Documents. This project falls under the provisions of KRS 227.885 to 227.893 for prevailing wage rates. Evaluation of Bids and the awarding of a final contract are subject to the reciprocal preference for Kentucky resident bidders pursuant to KRS 22A.094 and (KAR 200.5-005).

Owner reserves the right to reject any or all bids, including without limitation the right to reject any or all nonconforming, non-responsive, incomplete, unbalanced, or conditional bids, to waive informality, and to reject the Bid of any Bidder if Owner believes that it would not be in the best interest of Owner to make an award to that Bidder. Owner also reserves the right to negotiate with the apparent successful Bidder to such an extent as may be determined by Owner.

Minority Bidders are encouraged to bid.

Bids shall remain subject to acceptance for 90 days after the day of bid opening or for such longer period of time to which a Bidder may agree in writing upon request of the Owner. If a Contract is to be awarded, the Owner will give the successful Bidder a Notice of Award during the period of time during which the successful Bidder's bid remains subject to acceptance.

Amy Kramer, Vice President of Engineering, Production & Distribution Northern Kentucky Water District 605 KENT. DAVI 1/68177776

Garage & Yard Sale VISIT Cincinnati.com/classifieds TO PLACE YOUR AD

Great Buys Garage Sales neighborhood deals...

Estate Sales

Events & Fairs

ESTATE SALE Cincinnati OH Estate Sale 3440 Washburn Ave. Cincinnati, OH 45224 12/2 & 12/3 Fri - 9-4, Sat @ 8-4; Sun 9-4 Contents of home & basement. Rough wood king bed, twin bed, gaiter table, bookcase w/drawers, portable bar, dining table/chair set, old quilts, bookcases, lamps, trunk, electronics, washer home gym, washer, 2 dressers, jewelry, holiday, Lionel train set, boys bikes, yard art, lots of smalls - too much to list - all priced to sell info @ pic-hustatatesales.com or 859-992-0312. Dir: Kenwood Rd-Euclid (no parking in drive) parking on Nodding Way (across the street) or Pleasant Ln (just past house)

HOPEFUL LUTHERAN PRESCHOOL is hosting a Holiday Bazaar/angeles December 2, 2016 9:00 a.m. to 2:00 p.m. Get all your Christmas shopping done in one place! \$1 admission includes raffie ticket for a variety of prizes Food and drinks available Over 30 crafts and vendors. Luteoies, Thirty One Gifts, Essential oils, wood crafts, jewelry, crocheted items, and so much more! 6430 Hopeful Church Road Florence, KY 41043 Taylor Mill/Independence House of Prayer Holiday Shopping Bazaar, Sat. Dec. 3, 1-4pm, 6263 Taylor Mill Rd

Bethlehem-MIDGE CHURCH Bazaar/Sale! St. John UCC in Basement 820 Fairfield & Ward, Fri 12/2, 9p-8p & Sat 12/3, 9a-1p. Christmas trees, ornaments & decorations, household items, chairs, boots, clothes & much more. All proceeds to benefit Church. Burlington, Fri 12/2 & Sat 12/3, 9-3 6348 Stonehenge Cir Boys & girls baby clothes & toys, household items, men & women clothes, an appliances, electronics, furniture, tools, coats & hoodies, collectibles & lots more. Dir: r116 to left on east bend right on featherstone right on redstone right on stonehenge

ESTATE SALE Crittendon Estate Sale 18003 Violet Rd Crittenden, KY 41030 12/2 & 12/3 Fri-9-4, Sat @ 8-4; Sun 9-4 Contents of beautiful country home to include - rd out kitchen table Brooklyn Q bed, mirrored dresser & armors, curio cabinets, oak desk, 20s tables, wood medicine cabinet, chest of drawers, child's wood table, loveseat, shuff-board, 2 tables, jewelry, shuff-board, N scale train layout, Frankoma dolls, Legos, toys, cast-iron, clocks, butter churn, electronics, drafting table, men's bike, old shed, smoker, yard tools, old lamps, books, CDs, holiday kitchen items - too much to list - all priced to sell info and pic-hustatatesales.com or 859-992-0488, Dir: 75 south-Walton exit R off exit-L-Walton-Verona Rd-L-Connector Rd-L-Eads-R-Violet Rd (Corner House)

Rare Beatles Collection from 1964! Progress, Magazines, Pictures, 45's & LPs (some very rare), Also, 100 Elvis 45's LPs (some rare), Old Comics from 1940, Old Baseball cards from 1955, Pocket Knives, Some Antique Furniture, UK Baseball Collection, 17 signed & framed pictures, Old Vaseline & Cat Paws signed by '78 Championship Team. Old Scrapbooks from 1945, Rupp-Caldwell posters, Great Christmas Gift! Call for appointment, 859-939-2897 or 859-430-2684, Independence, KY. NOW TILL CHRISTMAS!!

Independence, KY- Hugs Tool Sale Dec. 2, 8a-1p, Dec. 3, 8a-2p 8432 TAYLOR MILL RD Drill presses, Lathe, Milling Machine, mills, tools & much more. Cash Only, Rain or Shine

ATTENTION Florence, KY - Estate Sale, 208 Kentaboo Ave, Sat 10-4, Sun 10-4, Antiques, furniture, treadmill, lamps, dishes, pots, pans, figurines, Dir: Off Dixie Highway

Grand Antique Mall Grand Holiday Sale! 15%-50% OFF Dec. 3rd & 4th 27,600 Sq. Ft. Mon-Sat, 10am-6pm Sun, 12pm-6pm 9071 Harding Rd (Evards Plaza) 45218 513-854-1919 www.grandantiquemall.com

Post your rental. WANT CLASSIFIEDS online at dndmail.com ENQUIRER MEDIA

Domestic Pets German Shepherd DOB 10/14/16, sable & black/tan, loving temperament, AKC, males and females parents on site 1st shot and wormed \$800 THY Pups on FB (937)774-2093 @dndmail.com

German Shepherd Puppies - 6 Male & 6 Female, \$59-930-3087 www.kentuckyshepherd.com

German Shepherd Pups for Christmas! AKC, photo & wormed, black, black & tan, coal blue, & pure white. \$550-4750 cash/ MC/ Visa. 418-628-3830, 418-333-1185 @dndmail.com

Great Dane Puppies, AKC, P-1 Black & 1-Fawn Parents on site, \$700 \$59-927-9393 or 859-667-7437

Miniature Schnauzer Pups. M & F, \$250, Available November 21st. 937-919-9299

Siamex kittens, Seal Point, Born 11/16, \$195. Also, Beagle Pups - \$275, shot/wormed, 937-725-9641; Blanchester, OH

Yorkies CUC, Males-9400 & females-8500, parents are 2-8 lbs, vet checked, shots, will hold until Christmas 513-947-0996

Automotive Rides best deal for you... Autos Wanted

CASH for junk cars, trucks & vans. Free pick up. Call Jim Roy anytime 859-988-2909 or 859-991-6178

CADILLAC 1998 SEDAN DEVILLE d'Elegance, gold edit, Power, Garage kept, new tires, etc. call 859-428-8182

Chrysler 2007 PT Cruiser - 1 owner, all records, 60K mi, like new, \$1,800 859-430-2560

Service Directory CALL 813-421-4300 TO PLACE YOUR AD

Mercedes 190 Benz E200 new tires, new gas \$2,850 OBO: 859-431-0059

Classic & Antique

1984 Chevrolet Corvette C3 Stingray, 4 speed coupe, 327/300HP, silver pearl/black interior, 118000, marlynburbk et770@gmail.com / 502-255-1746

ENQUIRER MEDIA

SUVs JEEP 2004 Grand Cherokee Laredo, 4x4, Low miles, 8 cyl, gas, heat, new tires Call 859-428-4383

Vans Chrysler '07 Town & Country Van, 3rd row seat, 82k, cond. 90K miles, new tires Call 859-428-4383

Roofing & Siding R & R ROOFING Residential Roofing Free estimates or on-site • Free Estimates • Fully Insured • 6" & 6" Gypsum Ceilings Rodney Goles 859-740-8806

ENQUIRER MEDIA

ENQUIRER MEDIA

ENQUIRER MEDIA

ENQUIRER MEDIA

ENQUIRER MEDIA

ENQUIRER MEDIA

ENQUIRER MEDIA



\$1 OFF
Admission

Good for up to 4 people. Limit one discount per visit. Coupon must be presented. Not valid with other offers.

PARKS

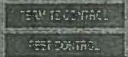
Whimsical

Wonderland

at Krohn

Special Holiday Hours
Thanksgiving Nov. 24th
& Christmas Dec. 25th
10 am - 2 pm

Presented By:



The ANNUAL HOLIDAY SHOW!
at KROHN CONSERVATORY
NOVEMBER 12 - JANUARY 8

Open Daily 10 am - 5 pm

Admission: Adults \$7 • Children (5-12) \$4 • Children 4 and younger Free

THE ENQUIRER
Cincinnati.com

1501 Eden Park Drive, Cincinnati, OH 45202 • 513-421-5707

www.cincinnati-parks.com • @cincyparks

Reasonable accommodation upon request. Visitors may be photographed, filmed, or recorded by the Cincinnati Park Board for educational or promotional uses.

NOTICE

Please take notice that Duke Energy Kentucky, Inc. has applied to the Kentucky Public Service Commission for approval to revise its Demand Side Management (DSM) rate for gas service and electric service for residential and commercial customers. Duke Energy Kentucky's current monthly DSM rate for residential gas customers is \$0.044741 per hundred cubic feet and for non-residential gas customers is \$0.000000 per hundred cubic feet. Duke Energy Kentucky's current monthly DSM rate for residential electric customers is \$0.007128 per kilowatt-hour and for non-residential customers is \$0.002758 per kilowatt-hour for distribution service and \$0.000049 per kilowatt-hour for transmission service.

Duke Energy Kentucky seeks approval to revise these rates as follows: Duke Energy Kentucky's monthly DSM rate for residential gas customers would decrease to (\$0.013241) per hundred cubic feet and for non-residential gas customers would remain at \$0.000000 per hundred cubic feet. Duke Energy Kentucky's monthly DSM rate for residential electric customers would increase to \$0.007967 per kilowatt-hour and for non-residential customers would decrease to \$0.002576 per kilowatt-hour for distribution service and would increase to \$0.000183 per kilowatt-hour for transmission service.

The rate contained in this notice is the rate proposed by Duke Energy Kentucky. However, the Public Service Commission may order a rate to be charged that differs from this proposed rate. Such action may result in a rate for consumers other than the rate in this notice. The foregoing rates reflect a proposed increase in electric revenues of approximately \$0.80 million or 0.25% over current total electric revenues and a decrease in gas revenues of approximately \$3.4 million or (4.00%) of current total gas revenues.

A typical residential gas customer using 70 ccf in a month will see a decrease of \$4.06 or (5.3%). A typical residential electric customer using 1000 kWh in a month will see an increase of \$0.84 or 0.95%. A typical non-residential electric customer using 40 kilowatts and 14,000 kWh will see a decrease of \$2.55 or (0.22%). A non-residential customer served at transmission voltage using 10,000 kilowatts and 4,000,000 kWh will see an increase of \$536.00 or 0.22%. Non-residential gas customers will see no change in their bills from this application.

Any corporation, association, body politic or person may by motion within thirty (30) days after publication or mailing of notice of the proposed rate changes, submit a written request to intervene to the Public Service Commission, 211 Sower Boulevard, P.O. Box 615, Frankfort, Kentucky 40602, and shall set forth the grounds for the request including the status and interest of the party. The intervention may be granted beyond the thirty (30) day period for good cause shown. Written comments regarding the proposed rate may be submitted to the Public Service Commission by mail or through the Public Service Commission's website. A copy of this application filed with the Public Service Commission is available for public inspection at Duke Energy Kentucky's office at 4580 Olympic Boulevard, Erlanger, Kentucky 41018 and on its website at <http://www.duke-energy.com>. This filing and any other related documents can be found on the Public Service Commission's website at <http://psc.ky.gov>.

Enquirer 11/11/16

WITH CUSTOM PULL-OUT SHELVES,

there's a lot to be thankful for.

Get more access with pull-out shelves for existing cabinets.



Schedule your free design consultation
(888) 267-1805 • shelfgenie.com

50% OFF INSTALLATION*

ShelfGenie
EVERYTHING WITHIN REACH™

*Limit one offer per household. Applies to purchases of 5 or more Classic or Designer Glide-Out™ shelves. Expires 12/31/2016. Lifetime warranty valid for Classic or Designer Solutions.



NOTICE

Please take notice that Duke Energy Kentucky, Inc. has applied to the Kentucky Public Service Commission for approval to revise its Demand Side Management (DSM) rate for gas service and electric service for residential and commercial customers. Duke Energy Kentucky's current monthly DSM rate for residential gas customers is \$0.044741 per hundred cubic feet and for non-residential gas customers is \$0.000000 per hundred cubic feet. Duke Energy Kentucky's current monthly DSM rate for residential electric customers is \$0.007128 per kilowatt-hour and for non-residential customers is \$0.002758 per kilowatt-hour for distribution service and \$0.000049 per kilowatt-hour for transmission service.

Duke Energy Kentucky seeks approval to revise these rates as follows: Duke Energy Kentucky's monthly DSM rate for residential gas customers would decrease to (\$0.013241) per hundred cubic feet and for non-residential gas customers would remain at \$0.000000 per hundred cubic feet. Duke Energy Kentucky's monthly DSM rate for residential electric customers would increase to \$0.007967 per kilowatt-hour and for non-residential customers would decrease to \$0.002576 per kilowatt-hour for distribution service and would increase to \$0.000183 per kilowatt-hour for transmission service.

The rate contained in this notice is the rate proposed by Duke Energy Kentucky. However, the Public Service Commission may order a rate to be charged that differs from this proposed rate. Such action may result in a rate for consumers other than the rate in this notice. The foregoing rates reflect a proposed increase in electric revenues of approximately \$0.80 million or 0.25% over current total electric revenues and a decrease in gas revenues of approximately \$3.4 million or (4.00%) of current total gas revenues.

A typical residential gas customer using 70 ccf in a month will see a decrease of \$4.06 or (5.3%). A typical residential electric customer using 1000 kWh in a month will see an increase of \$0.84 or 0.95%. A typical non-residential electric customer using 40 kilowatts and 14,000 kWh will see a decrease of \$2.55 or (0.22%). A non-residential customer served at transmission voltage using 10,000 kilowatts and 4,000,000 kWh will see an increase of \$536.00 or 0.22%. Non-residential gas customers will see no change in their bills from this application.

Any corporation, association, body politic or person may by motion within thirty (30) days after publication or mailing of notice of the proposed rate changes, submit a written request to intervene to the Public Service Commission, 211 Sower Boulevard, P.O. Box 615, Frankfort, Kentucky 40602, and shall set forth the grounds for the request including the status and interest of the party. The intervention may be granted beyond the thirty (30) day period for good cause shown. Written comments regarding the proposed rate may be submitted to the Public Service Commission by mail or through the Public Service Commission's website. A copy of this application filed with the Public Service Commission is available for public inspection at Duke Energy Kentucky's office at 4580 Olympic Boulevard, Erlanger, Kentucky 41018 and on its website at <http://www.duke-energy.com>. This filing and any other related documents can be found on the Public Service Commission's website at <http://psc.ky.gov>.

ENCLOSURE 11/18/16

arctic polar regions, where the ice is melting.

So why don't they find new homes? Some do, said Roman, who studied the effects of the diaspora on the Kiribati culture as a Fulbright Scholar while in New Zealand to earn a doctorate in anthropology. New Zealand accepts 75 Kiribati who move each year.

Others move to the United States and assimilate into American society. "What happens when a country disappears?" said Roman, who believes his childhood, moving from town to town as his father opened new Kodak

of the science center, climate change and what is at stake.

If you believe and you care, do something about it, he says. Drive less. Try to use renewable energy and conserve energy when possible. Consider donating to the nonprofit Kiribati Keepers, created to provide disaster relief after Cyclone Pam, Roman said.

"Know about us," said Roman, who considers himself a part of the Kiribati community. "Know our story."

Learn more on the Facebook page, www.facebook.com/humansofkiribati.

40% BLACK FRIDAY OFF WEEKEND ONLY

Friday, Saturday & Sunday

GNC

LIVE WELL

Bring in this coupon to any of the 7 Participating Hilycord GNC Stores and receive 40% OFF your entire purchase.

Store locations below.

Store hours are Friday 10am-8pm, Saturday 10am-6pm and Sunday 12pm-5pm

Only Valid Friday November 25th through Sunday November 27th, 2016.

Village Green

513-939-0270

675 Deis Dr. #K, Fairfield, OH 45014

Blue Ash Commons

513-984-9522

4118 Hunt Rd., Cincinnati, OH 45236

Mulberry Square

513-831-3332

1081-G SR28, Milford, OH 45150

Glenwood Crossing

513-772-7899

10587 Springfield Pike, Woodlawn, OH 45215

Union Village Center

859-384-0496

8761 US 42, Union, KY 41091

The Shoppes of Mason

513-336-7575

5220 Kings Mill Road, Mason, OH 45040

Shoppes at Burlington

859-689-4900

1773 Patrick Drive, Burlington, KY 41005

Must present coupon. 40% off Retail Price Only. Cannot be combined with any other offers or in conjunction with Blue Tag EDLP or member discounts/pricing. Valid at only these participating locations in SW Ohio and Northern Kentucky. Prices good Nov 25th-27th. Coupon#17836

NOTICE

Please take notice that Duke Energy Kentucky, Inc. has applied to the Kentucky Public Service Commission for approval to revise its Demand Side Management (DSM) rate for gas service and electric service for residential and commercial customers. Duke Energy Kentucky's current monthly DSM rate for residential gas customers is \$0.044741 per hundred cubic feet and for non-residential gas customers is \$0.000000 per hundred cubic feet. Duke Energy Kentucky's current monthly DSM rate for residential electric customers is \$0.007128 per kilowatt-hour and for non-residential customers is \$0.002758 per kilowatt-hour for distribution service and \$0.000049 per kilowatt-hour for transmission service.

Duke Energy Kentucky seeks approval to revise these rates as follows: Duke Energy Kentucky's monthly DSM rate for residential gas customers would decrease to (\$0.013241) per hundred cubic feet and for non-residential gas customers would remain at \$0.000000 per hundred cubic feet. Duke Energy Kentucky's monthly DSM rate for residential electric customers would increase to \$0.007967 per kilowatt-hour and for non-residential customers would decrease to \$0.002576 per kilowatt-hour for distribution service and would increase to \$0.000183 per kilowatt-hour for transmission service.

The rate contained in this notice is the rate proposed by Duke Energy Kentucky. However, the Public Service Commission may order a rate to be charged that differs from this proposed rate. Such action may result in a rate for consumers other than the rate in this notice. The foregoing rates reflect a proposed increase in electric revenues of approximately \$0.80 million or 0.25% over current total electric revenues and a decrease in gas revenues of approximately \$3.4 million or (4.00%) of current total gas revenues.

A typical residential gas customer using 70 ccf in a month will see a decrease of \$4.06 or (5.3%). A typical residential electric customer using 1000 kWh in a month will see an increase of \$0.84 or 0.95%. A typical non-residential electric customer using 40 kilowatts and 14,000 kWh will see a decrease of \$2.55 or (0.22%). A non-residential customer served at transmission voltage using 10,000 kilowatts and 4,000,000 kWh will see an increase of \$536.00 or 0.22%. Non-residential gas customers will see no change in their bills from this application.

Any corporation, association, body politic or person may by motion within thirty (30) days after publication or mailing of notice of the proposed rate changes, submit a written request to intervene to the Public Service Commission, 211 Sower Boulevard, P.O. Box 615, Frankfort, Kentucky 40602, and shall set forth the grounds for the request including the status and interest of the party. The intervention may be granted beyond the thirty (30) day period for good cause shown. Written comments regarding the proposed rate may be submitted to the Public Service Commission by mail or through the Public Service Commission's website. A copy of this application filed with the Public Service Commission is available for public inspection at Duke Energy Kentucky's office at 4580 Olympic Boulevard, Erlanger, Kentucky 41018 and on its website at <http://www.duke-energy.com>. This filing and any other related documents can be found on the Public Service Commission's website at <http://psc.ky.gov>.

ENQUIRER 1/25/16