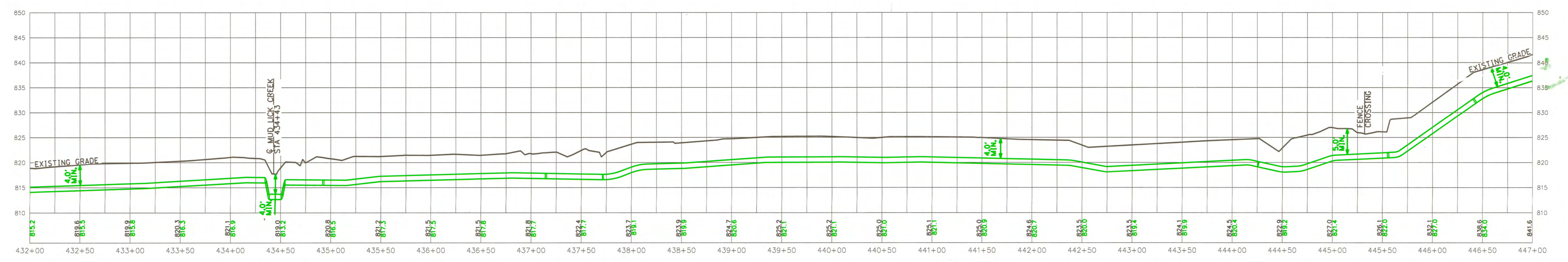


OWNERSHIP	← *264-GREENFIELD FARM INC →	← KYTC ROW →	← *264-GREENFIELD FARM INC →	KYTC ROW	*223-CHRIS BROOK FARM	
PIPE DETAIL	INSTALL - 1500' 12" SWPC X-52 .250" W.T.					
SPECIAL CONDITIONS	BRUSH/GRASS	GRAVEL/DRIVEWAY	BRUSH/GRASS	ASPHALT/PAVEMENT	GRAVEL/DRIVEWAY	BRUSH/GRASS

SKY-CDK-025
STA. 434+45
UNT TO MUD
LICK CREEK

SKY-CDK-026
STA. 442+62
UNT TO MUD
LICK CREEK

SKY-CDK-027
STA. 444+39
UNT TO MUD
LICK CREEK



PROFILE VIEW
HORIZONTAL SCALE: 1"=50'
VERTICAL SCALE: 1"=10'

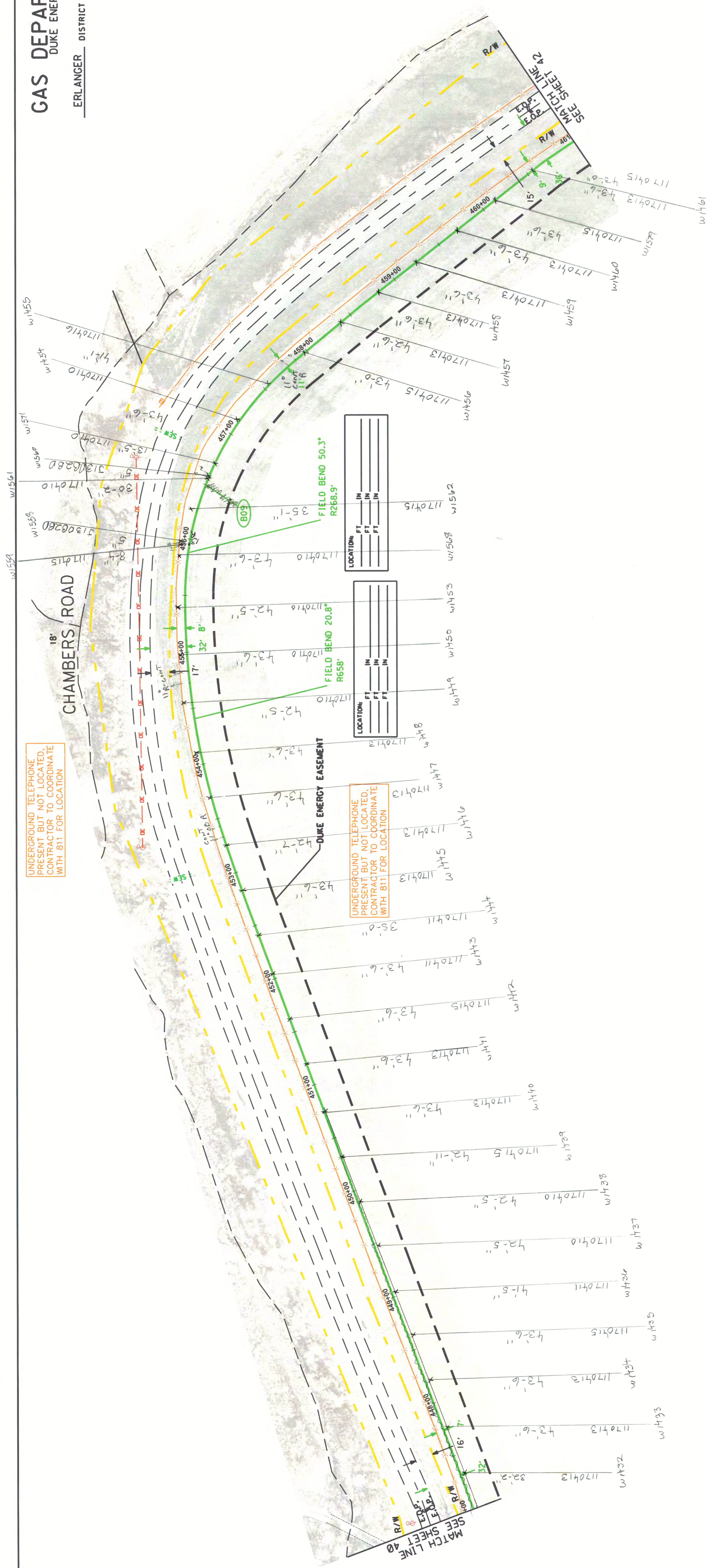
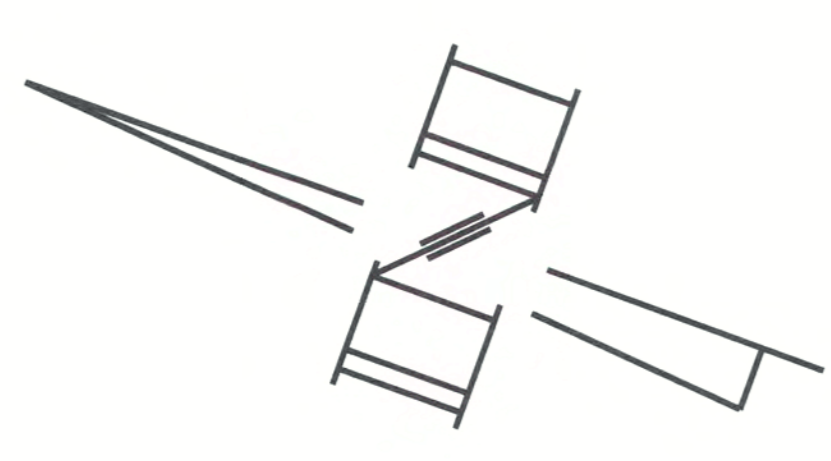
APRIL 07, 2017

BIG BONE 8205804

REVISIONS
Schns Date 4/10/17
MADP ISSUE REV 7
Jim White

41
54

GAS DEPARTMENT
DUKE ENERGY
ERLANGER DISTRICT



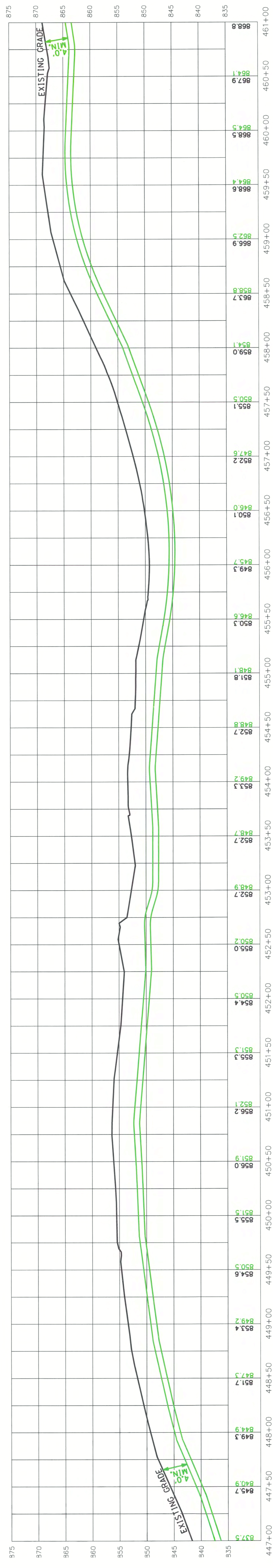
UNDERGROUND TELEPHONE
NO. NOTED.
CONTRACTOR TO COORDINATE
WITH 811 FOR LOCATION.

LOCATION	IN	FT	IN

LOCATION	IN	FT	IN

UNDERGROUND TELEPHONE
NO. NOTED.
CONTRACTOR TO COORDINATE
WITH 811 FOR LOCATION.

OWNERSHIP	← 223-CHRIS BROOK FARM →
PIPE DETAIL	INSTALL - 1400'
SPECIAL CONDITIONS	12" SWPC X-52 .250" W.T. BRUSH/GRASS



PROFILE VIEW
HORIZONTAL SCALE: 1"=50'
VERTICAL SCALE: 1"=10'

APRIL 07, 2017

REVISIONS

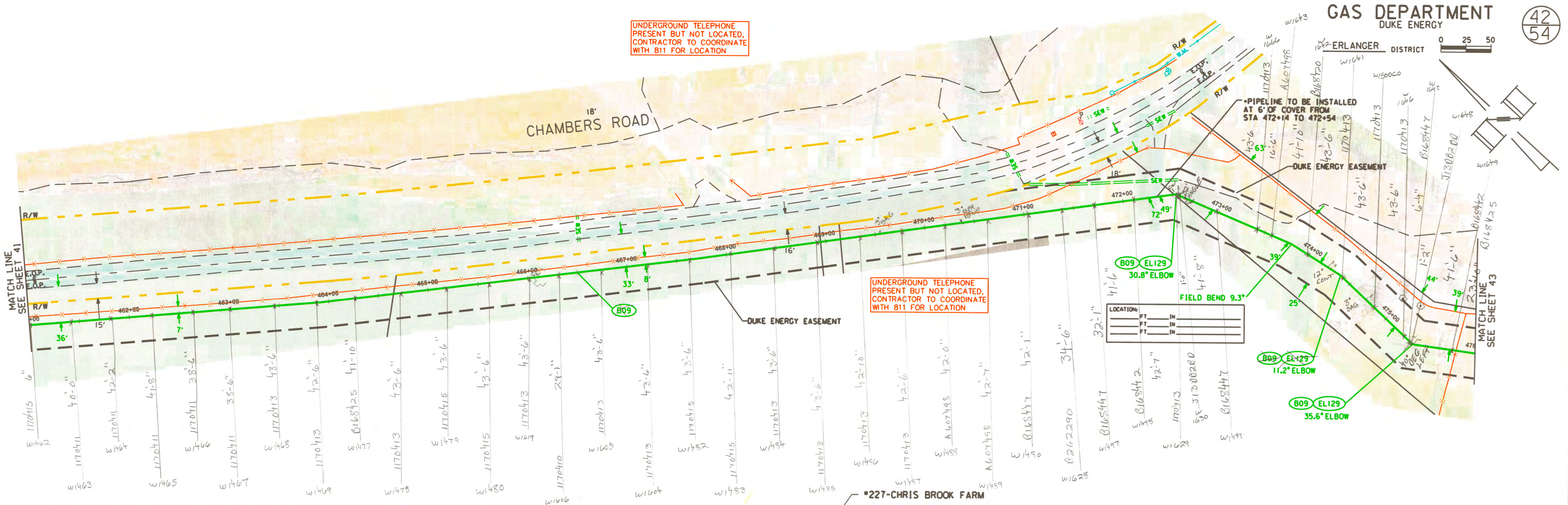
GAS DEPARTMENT
DUKE ENERGY

42
54

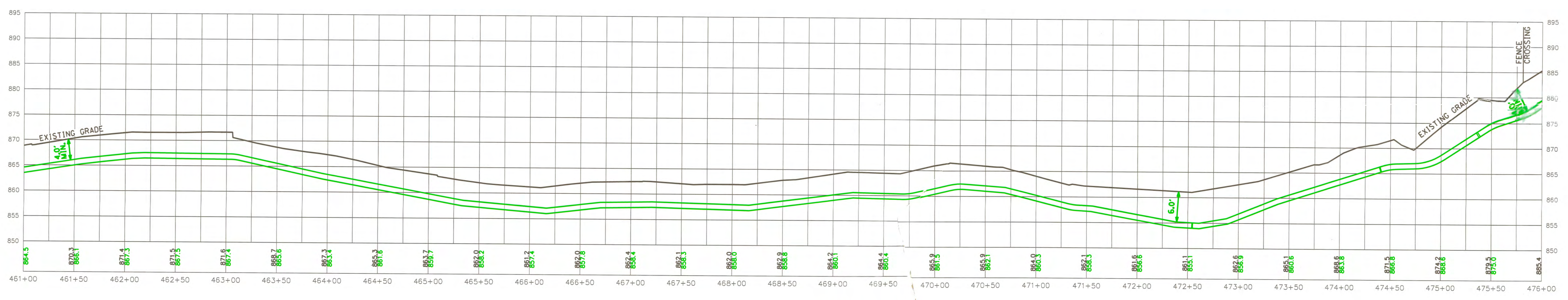
ERLANGER DISTRICT

UNDERGROUND TELEPHONE
PRESENT BUT NOT LOCATED.
CONTRACTOR TO COORDINATE
WITH B11 FOR LOCATION

UNDERGROUND TELEPHONE
PRESENT BUT NOT LOCATED.
CONTRACTOR TO COORDINATE
WITH B11 FOR LOCATION



OWNERSHIP	← *223-CHRIS BROOK FARM →	← *225-CHRIS BROOK FARM →	← *231-CHRIS BROOK FARM →
PIPE DETAIL	INSTALL - 1500' 12" SWPC X-52 .250" W.T.		
SPECIAL CONDITIONS	BRUSH/GRASS		ASPHALT DRIVEWAY

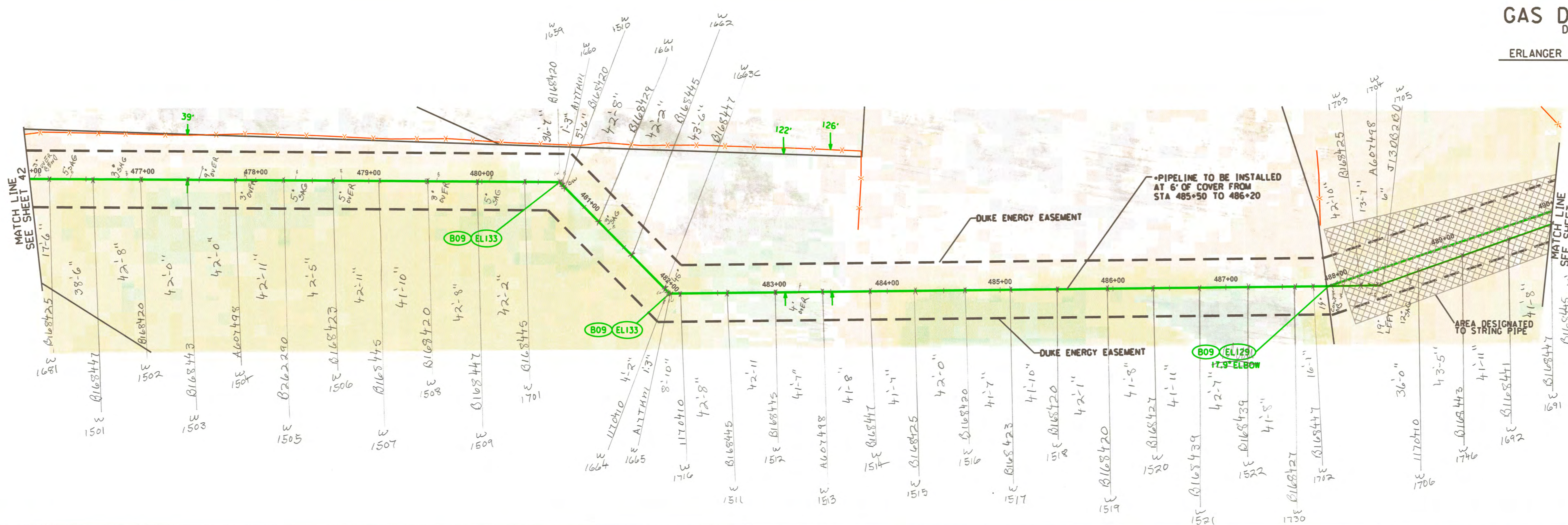
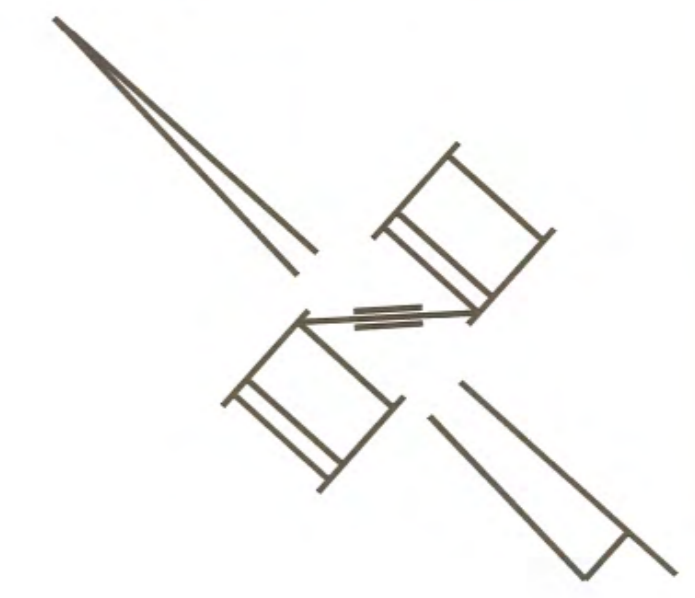


PROFILE VIEW
HORIZONTAL SCALE: 1"=50'
VERTICAL SCALE: 1"=10'

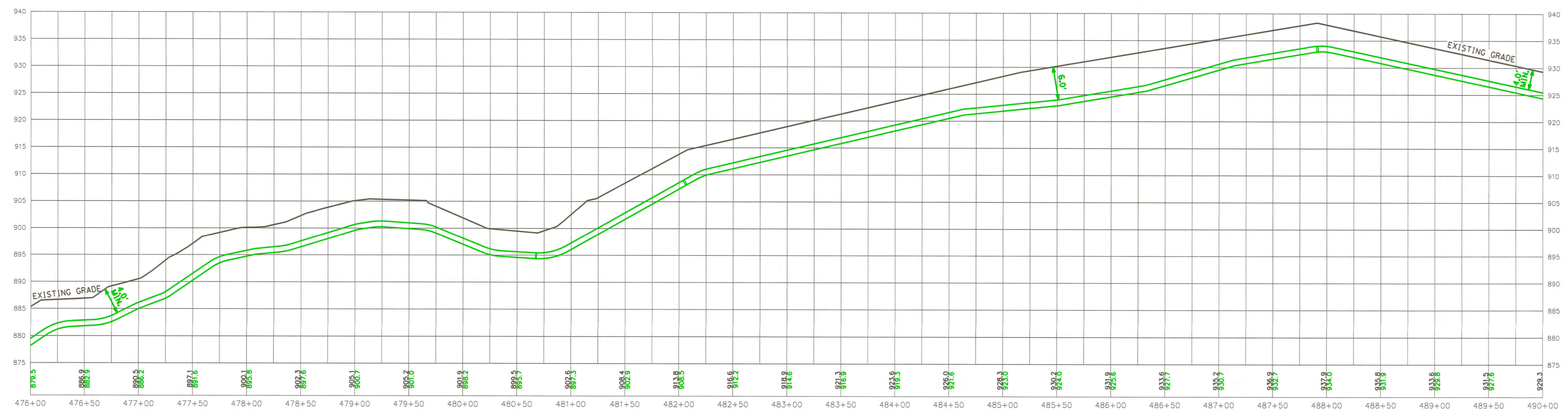
REVISIONS

REVISION 1: ADDED 6' COVER NOTE ON PLAN VIEW.

APRIL 07, 2017



OWNERSHIP	← #231-CHRIS BROOK FARM →	#233-CRAIG SHANNON D & JENNIFER J
PIPE DETAIL	INSTALL - 1400' 12" SWPC X-52 .250" W.T.	
SPECIAL CONDITIONS	BRUSH/GRASS	



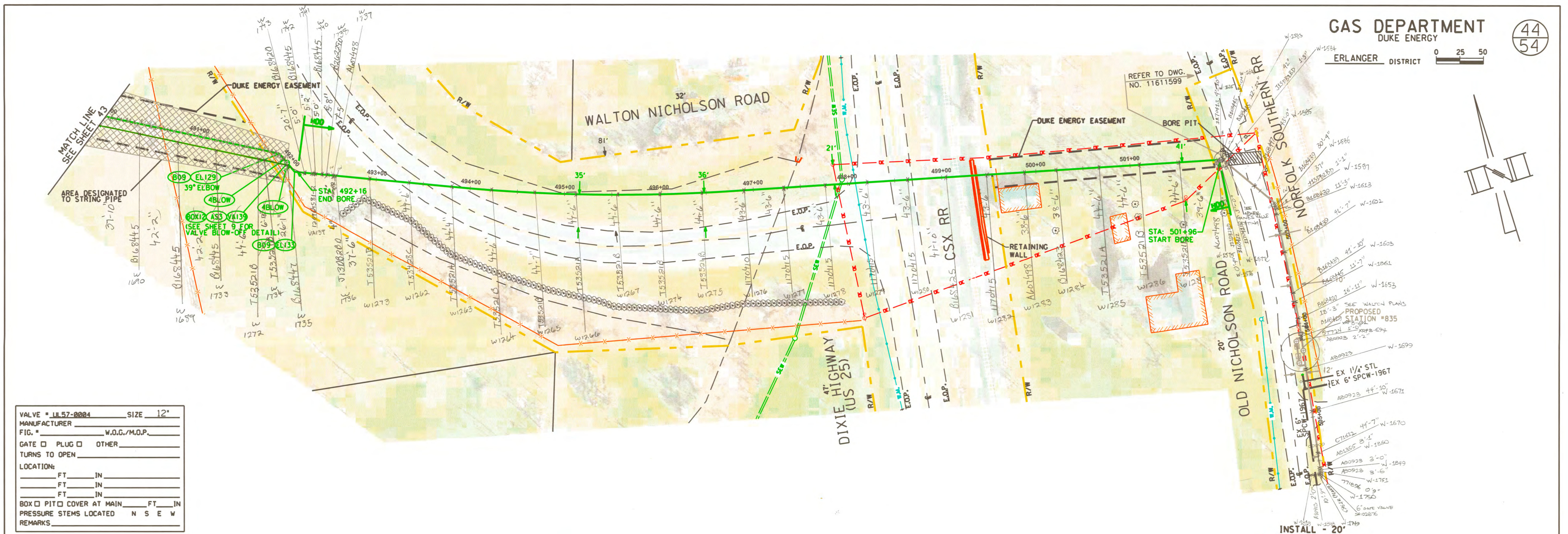
PROFILE VIEW
HORIZONTAL SCALE: 1"=50'
VERTICAL SCALE: 1"=10'

REVISIONS
Scan Date 4/10/18
MAP Issue Rev 7
Jo Wood

REVISION 1: ADDED 6' COVER NOTE ON PLAN VIEW.

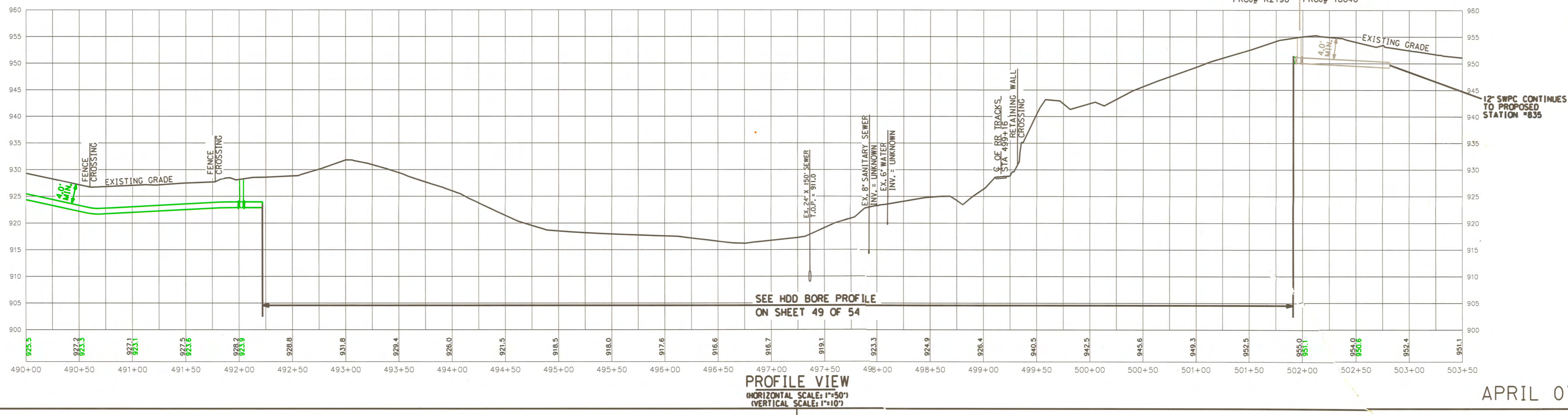
APRIL 07, 2017

BIG BONE 8205804



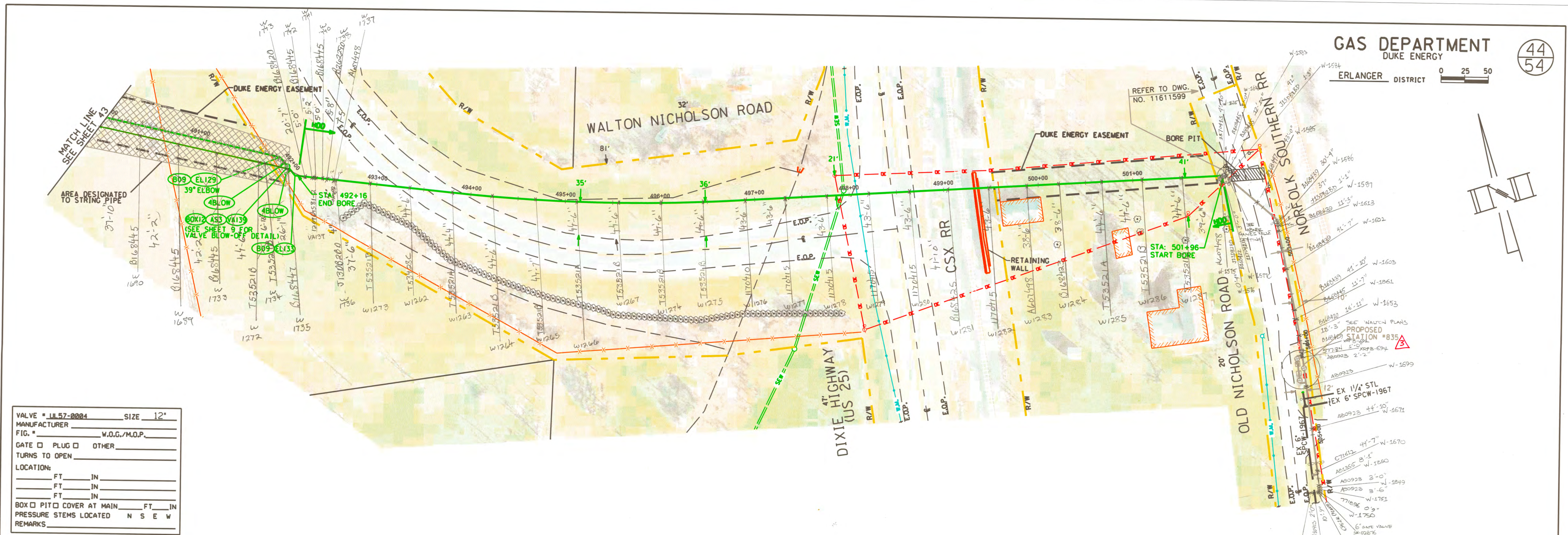
VALVE #	LL57-0004	SIZE	12"
MANUFACTURER			
FIG. #	W.O.G./M.O.P.		
GATE	<input type="checkbox"/> PLUG	<input type="checkbox"/> OTHER	
TURNS TO OPEN			
LOCATION:			
FT	IN		
FT	IN		
FT	IN		
BOX	<input type="checkbox"/> PIT	<input type="checkbox"/> COVER AT MAIN	FT IN
PRESSURE STEMS LOCATED N S E W			
REMARKS			

OWNERSHIP	← 233-CRAIG SHANNON D & JENNIFER J →	← KYTC ROW →	← 241-CITY OF WALTON →	← KYTC ROW →
PIPE DETAIL	INSTALL - 215' 12" SWPC X-52 .250" W.T.	HDD - 980' 12" SWPC X-52 .250" W.T. (POWERCRETE)		PART OF W.O.#11611599 12" SWPC X-52 .250" W.T.
SPECIAL CONDITIONS	BRUSH/GRASS	ASPHALT/PAVEMENT	BRUSH/GRASS	ASPHALT/PAVEMENT BRUSH/GRASS



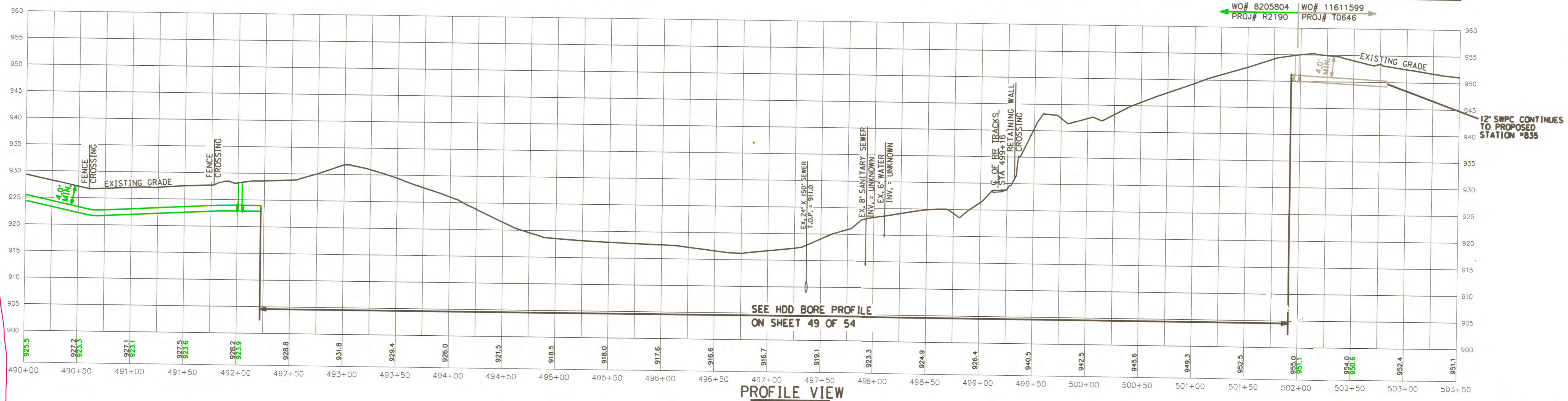
REVISIONS
Revision 02
Revised 6/14/2018

APRIL 07, 2017



VALVE #	JL 57-0004	SIZE	12"
MANUFACTURER			
FIG. #	W.O.G./M.O.P.		
GATE	<input type="checkbox"/> PLUG	<input type="checkbox"/> OTHER	
URNS TO OPEN			
LOCATION:	FT. IN.		
	FT. IN.		
	FT. IN.		
BOX	<input type="checkbox"/> PIT	<input type="checkbox"/> COVER AT MAIN	FT. IN.
PRESSURE STEMS LOCATED	N S E W		
REMARKS			

OWNERSHIP	← *233-CRAIG SHANNON D & JENNIFER J →		← KYTC ROW →		← *241-CITY OF WALTON →		← KYTC ROW →	
PIPE DETAIL	INSTALL - 215' 12" SWPC X-52 .250" W.T.		HDD - 980' 12" SWPC X-52 .250" W.T. (POWERCRETE)		PART OF W.O.#11611599 12" SWPC X-52 .250" W.T.		12" SWPC X-52 .250" W.T.	
SPECIAL CONDITIONS	BRUSH/GRASS		ASPHALT/PAVEMENT		BRUSH/GRASS		ASPHALT/PAVEMENT	



REVISIONS

Revision 02
Revised 6/14/2018
Revised 6/14/2018

Revision 03
Revised 6/14/2018
Revised 6/14/2018

PROFILE VIEW
HORIZONTAL SCALE: 1"=50'
VERTICAL SCALE: 1"=10'

APRIL 07, 2017

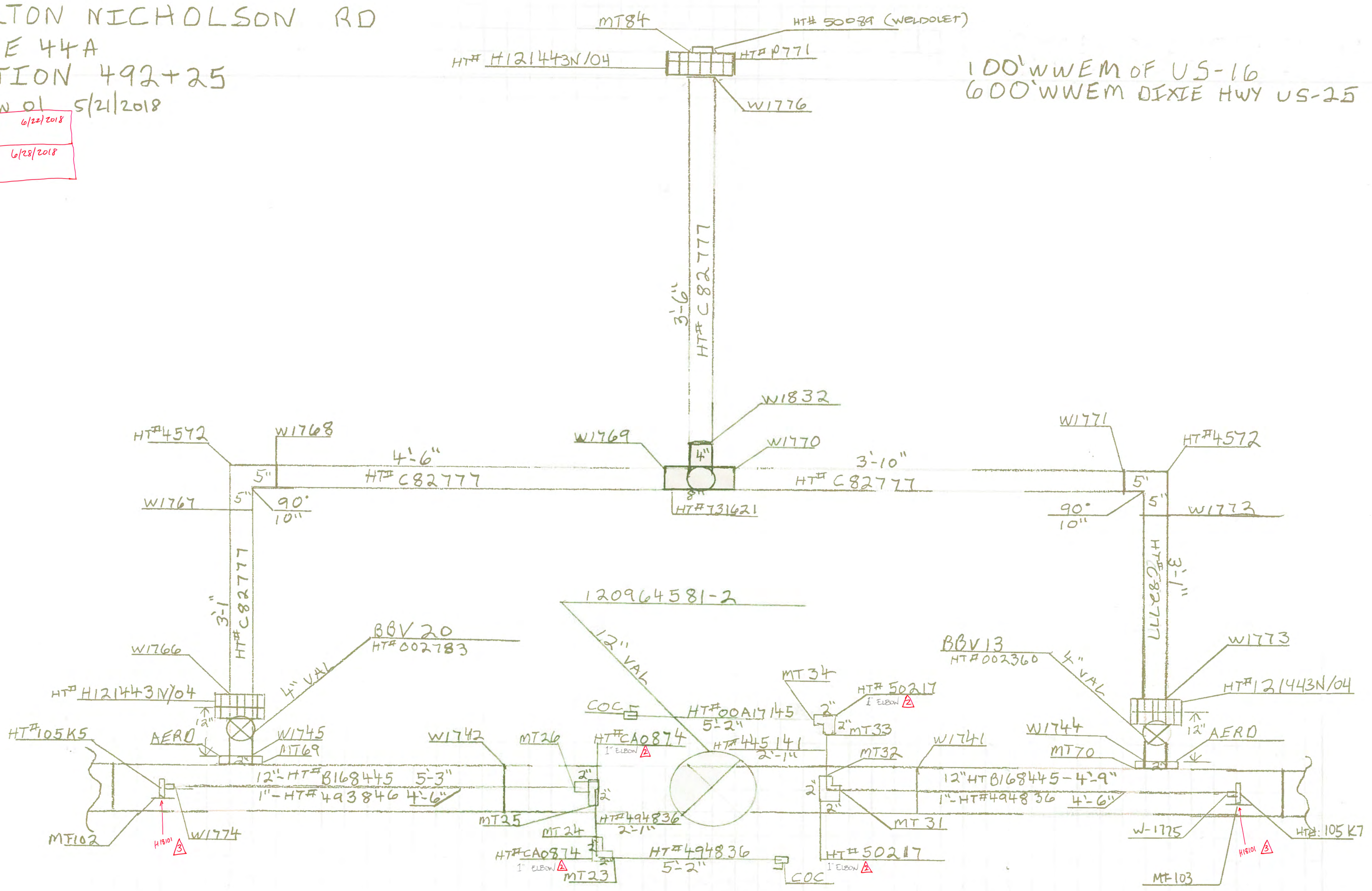
DETAIL C

WALTON NICHOLSON RD

PAGE 44A
STATION 492+25
Revision of 5/21/2018

Revision 02 6/22/2018
Redline DWG
Revision 03 6/28/2018
Redline DWG

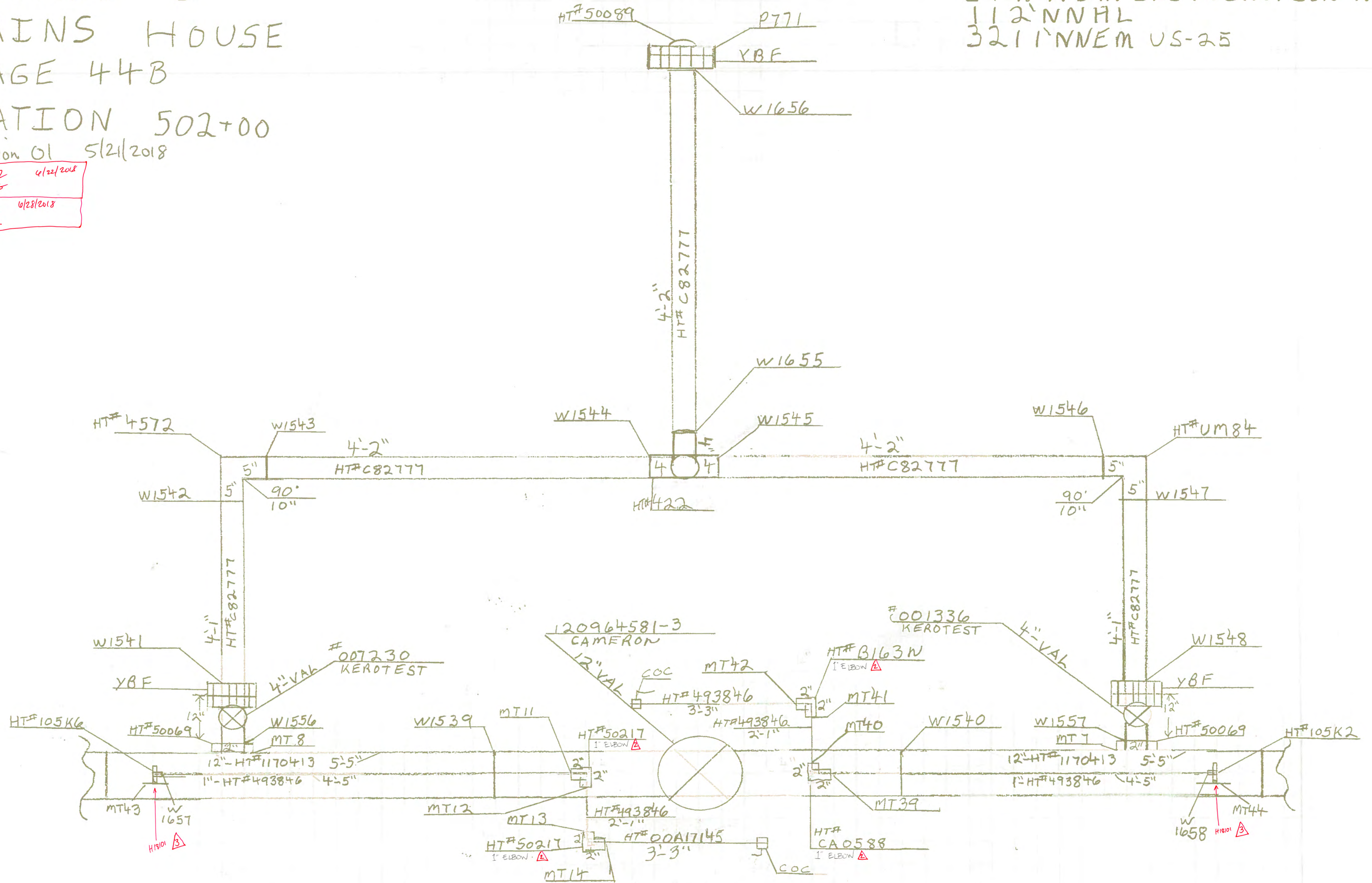
100' WWEM OF US-16
600' WWEM DIXIE HWY US-25



DETAIL D
GAINS HOUSE
PAGE 44B
STATION 502+00
Revision 01 5/21/2018

37' W WEM OLD NICHOLSON RD
112' N NHL
321' N NEM US-25

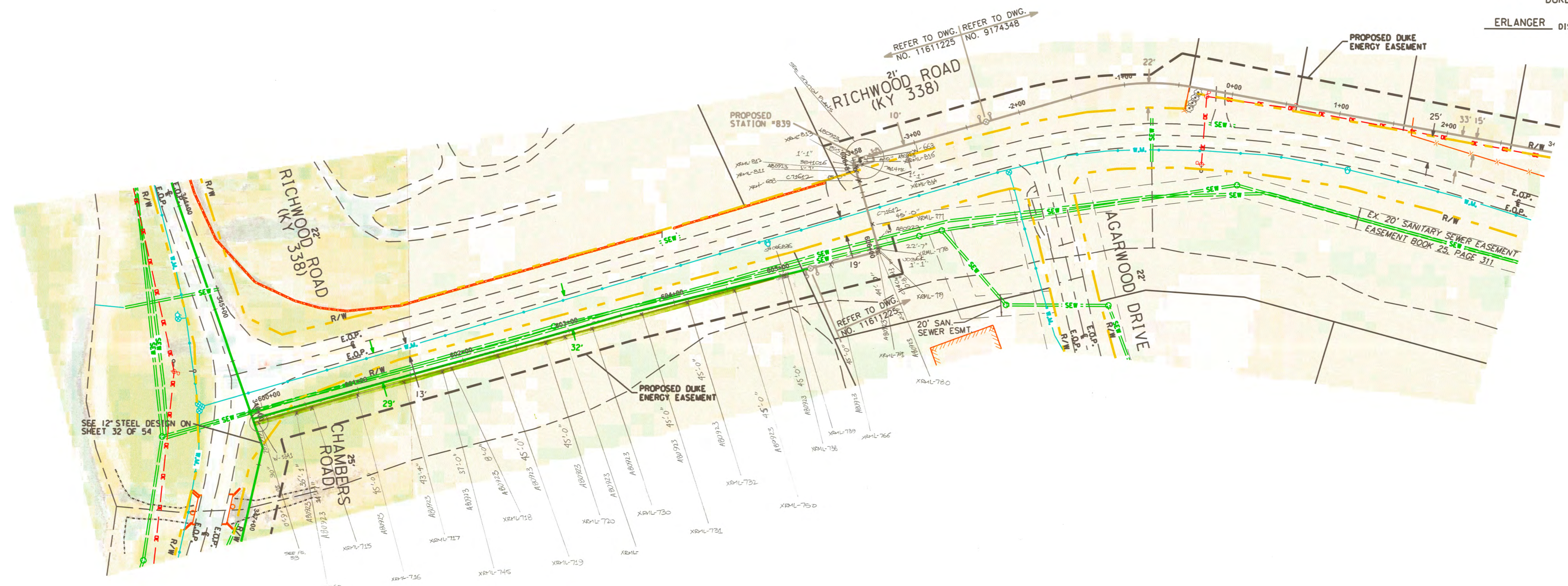
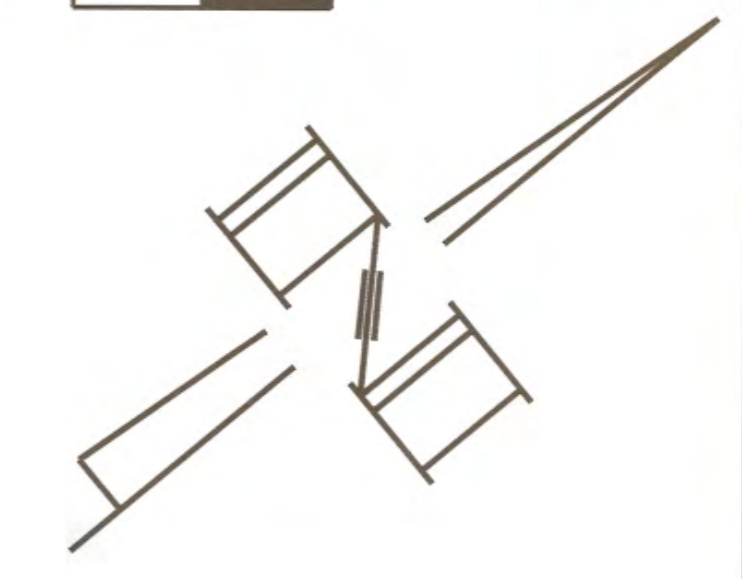
Revision 02 4/22/2018
Redline DWG
Revision 03 6/28/2018
Redline DWG



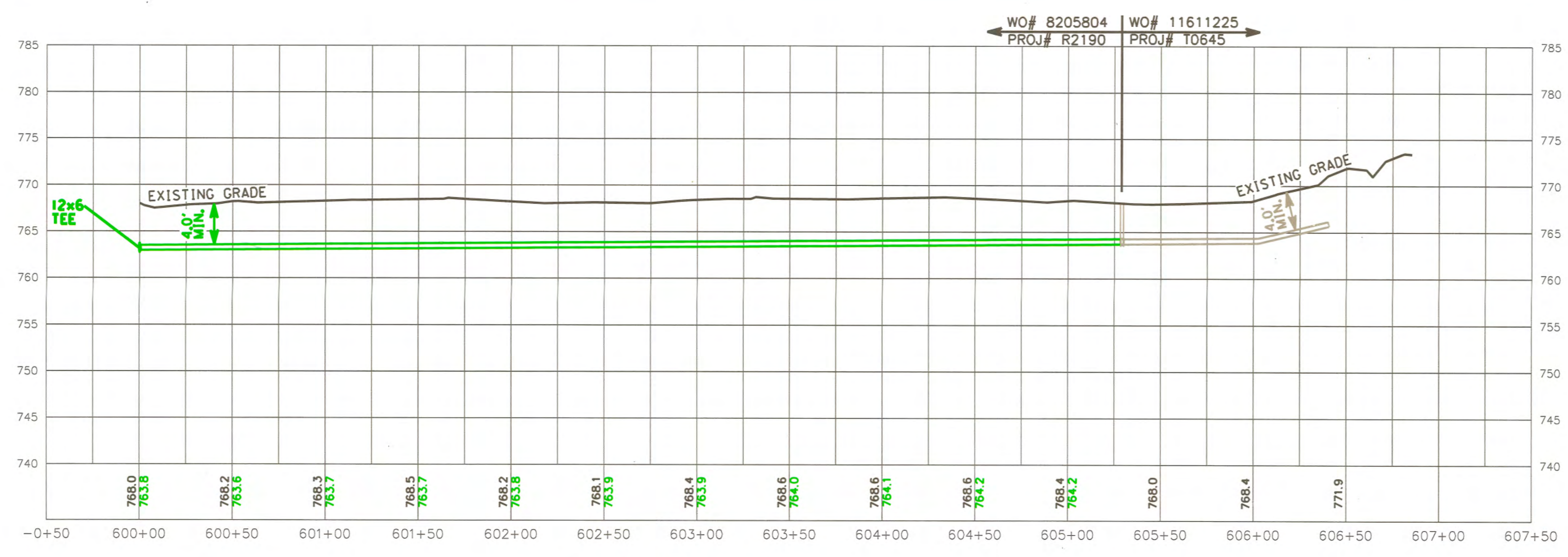
GAS DEPARTMENT
DUKE ENERGY
ERLANGER DISTRICT

45
54

0 25 50



OWNERSHIP	KYTC ROW	← #178-CAID RUSSELL D & RUTH LAVERNE →	#801-ESTATES OF RICHWOOD	KYTC ROW	← #176-RICHWOOD PRESBYTERIAN CHURCH →
PIPE DETAIL	INSTALL - 534'		PART OF W.O.#11611225		
	6" SWPC X-52		6" SWPC X-52		
SPECIAL CONDITIONS	BRUSH/GRASS				



PROFILE VIEW
(HORIZONTAL SCALE: 1"=50')
(VERTICAL SCALE: 1"=10')

REVISIONS
Revision of
Baseline 6/14/2018

APRIL 07, 2