

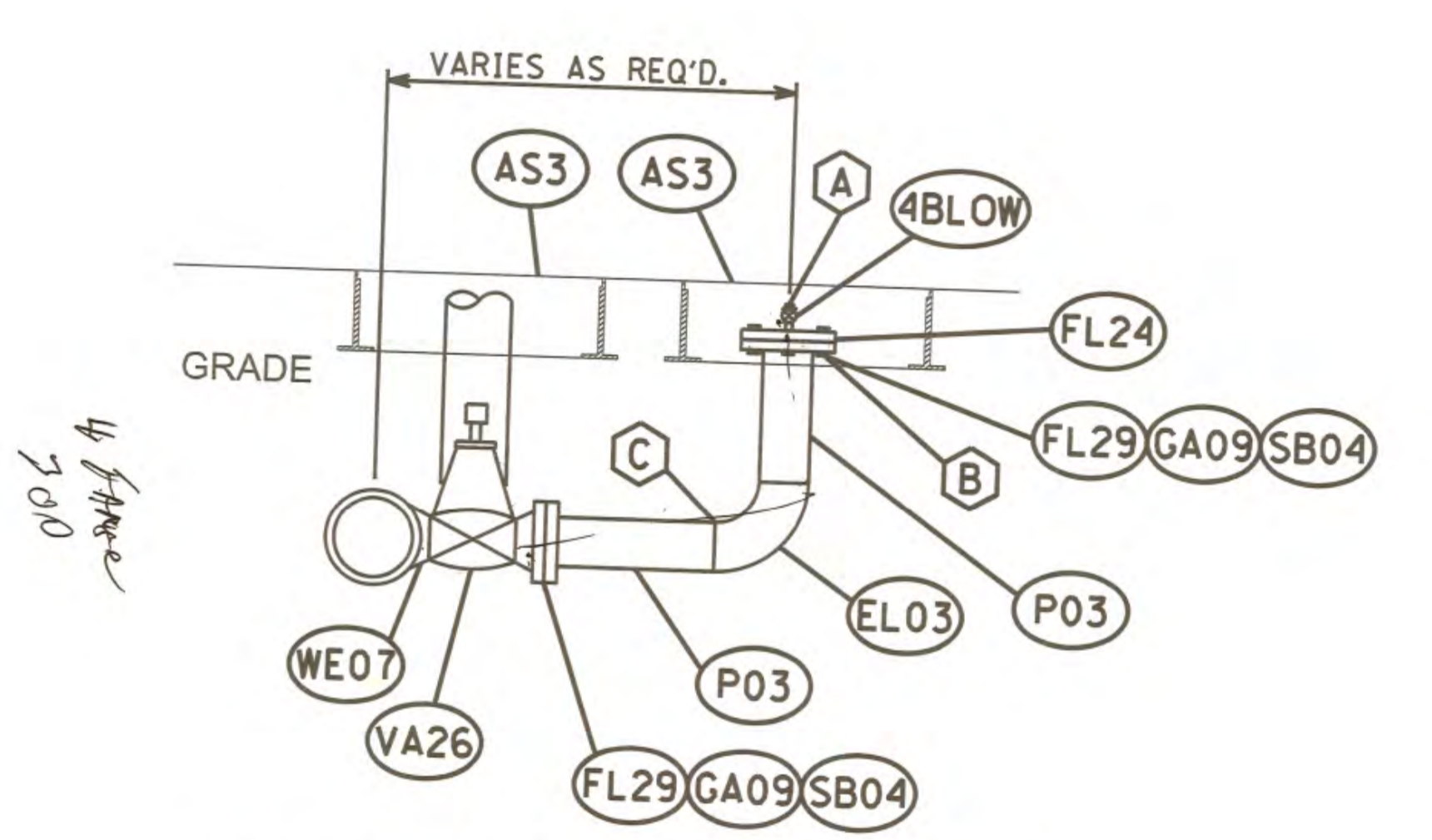
**GAS DEPARTMENT**  
DUKE ENERGY

9  
54

ERLANGER DISTRICT N.T.S.

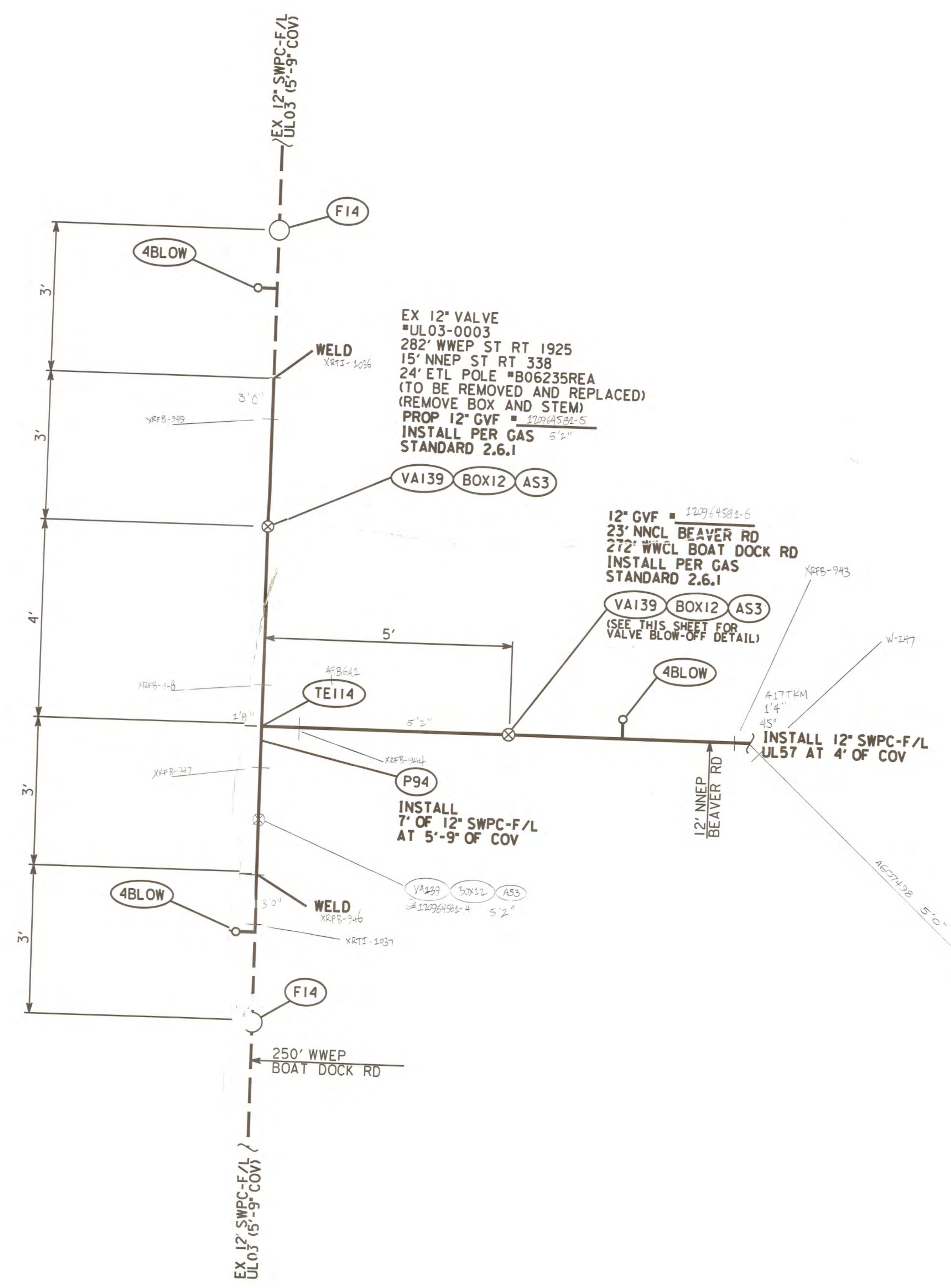
VALVE # UL03-0039 SIZE 12"  
 MANUFACTURER \_\_\_\_\_  
 FIG. # \_\_\_\_\_ W.O.G./M.O.P. \_\_\_\_\_  
 GATE  PLUG  OTHER \_\_\_\_\_  
 TURNS TO OPEN \_\_\_\_\_  
 LOCATION:  
 \_\_\_\_\_ FT \_\_\_\_\_ IN  
 \_\_\_\_\_ FT \_\_\_\_\_ IN  
 \_\_\_\_\_ FT \_\_\_\_\_ IN  
 BOX  PIT  COVER AT MAIN \_\_\_\_\_ FT \_\_\_\_\_ IN  
 PRESSURE STEMS LOCATED N S E W  
 REMARKS \_\_\_\_\_

VALVE # UL03-UL57 SIZE 12"  
 MANUFACTURER \_\_\_\_\_  
 FIG. # \_\_\_\_\_ W.O.G./M.O.P. \_\_\_\_\_  
 GATE  PLUG  OTHER \_\_\_\_\_  
 TURNS TO OPEN \_\_\_\_\_  
 LOCATION:  
 \_\_\_\_\_ FT \_\_\_\_\_ IN  
 \_\_\_\_\_ FT \_\_\_\_\_ IN  
 \_\_\_\_\_ FT \_\_\_\_\_ IN  
 BOX  PIT  COVER AT MAIN \_\_\_\_\_ FT \_\_\_\_\_ IN  
 PRESSURE STEMS LOCATED N S E W  
 REMARKS \_\_\_\_\_



**VALVE BLOW-OFF DETAIL**  
SCALE N.T.S.  
(TYP. OF 2)

DETAIL NOTES:  
 A. TAP 1/2" HOLE THROUGH CENTER OF BLIND FLANGE OR DRILL 1/2" HOLE THROUGH CENTER OF BLIND FLANGE AND WELD 1/2" THREAD-O-LET OVER HOLE. THREAD 1/2" DIA. X 2" LONG EXTRA HEAVY NIPPLE IN BLIND FLANGE OR THREAD-O-LET AND CONNECT NEEDLE VALVE TO OPPOSITE END. TURN VALVE TO THE OFF POSITION AND PLACE PLUG IN THREADED OUTLET OF NEEDLE VALVE.  
 B. TACK WELD STUD NUTS TO BOTTOM SIDE OF FLANGE.  
 C. BLOCKING TO SUPPORT BLOW-OFF MAY BE NECESSARY IN SANDY OR LOOSE SOIL.  
 D. TWO BLOW-OFFS REQUIRED FOR EVERY VALVE, EXCEPT FOR WEST TIE-IN WHERE THERE ARE 3 TOTAL.

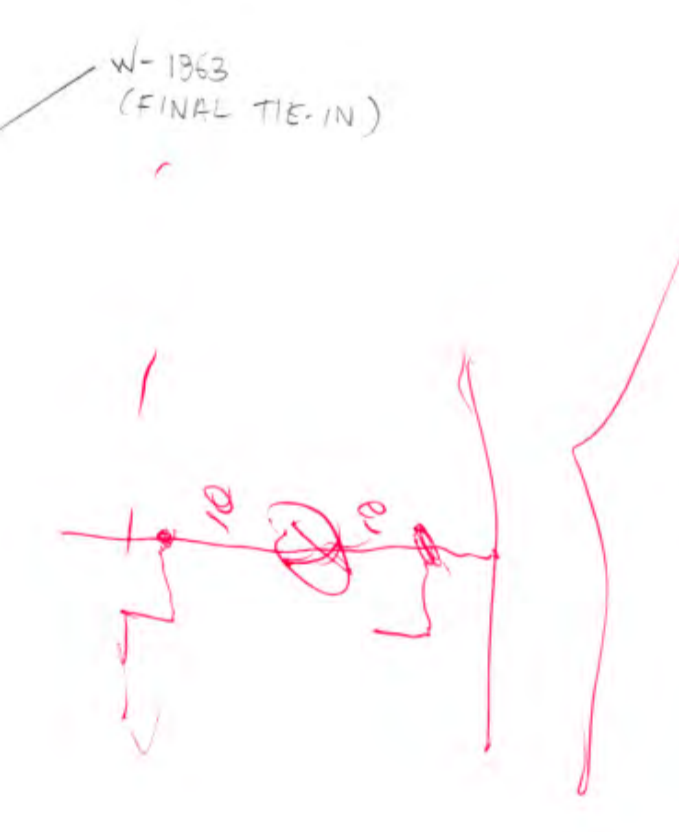


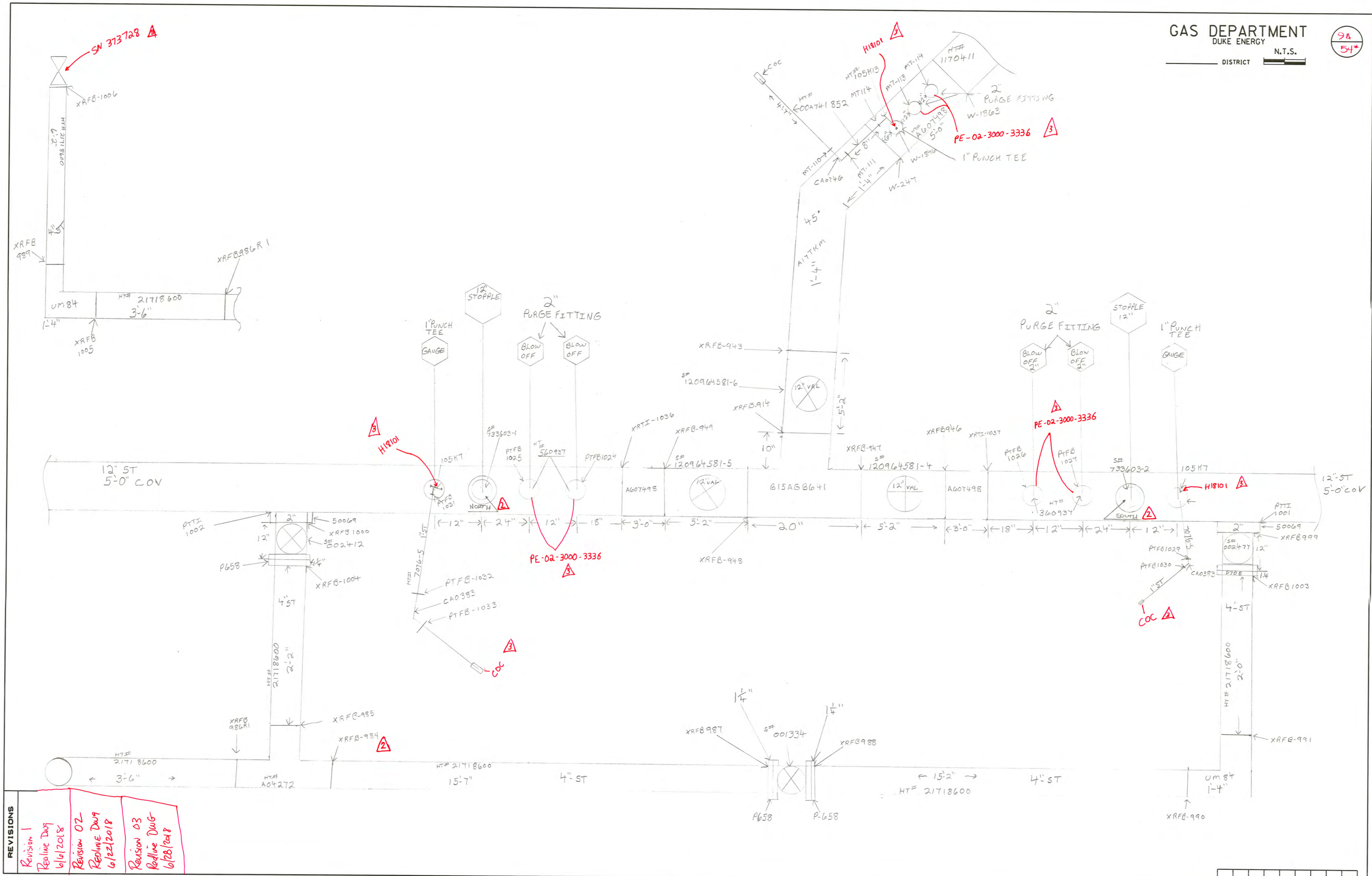
**DETAIL "A"**  
N.T.S.  
(FROM SHEET 8)

Redline Revision 01 5/22/2018

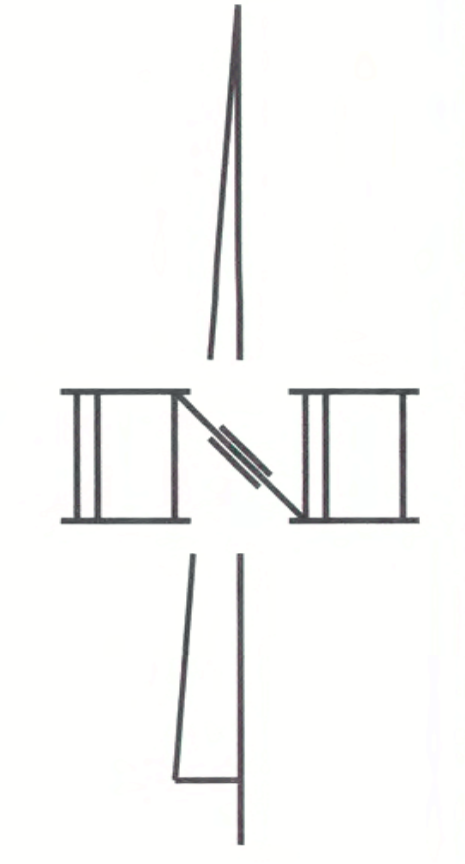
REVISIONS

REVISION 1: REMOVED BOM FOR VALVE BLOW-OFF.





REVISIONS
Revision 01 Redline DWG 6/16/2018
Revision 02 Redline DWG 6/22/2018
Revision 03 Redline DWG 6/28/2018



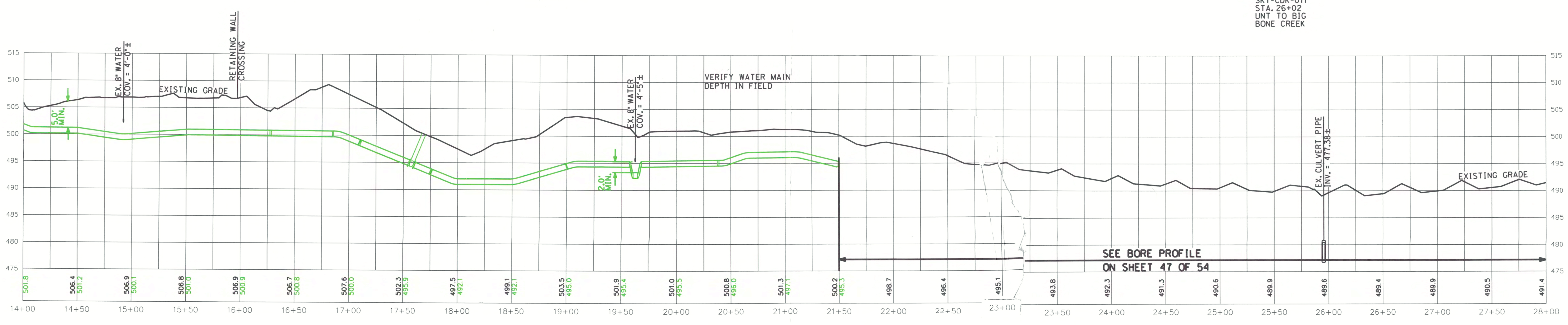
UNDERGROUND TELEPHONE  
PRESENT BUT NOT LOCATED.  
CONTRACTOR TO COORDINATE  
WITH 811 FOR LOCATION

17° Bend  
9' SSEM Beaver Rd  
250' WEM Big Bone Rd  
78' EHL #3422 Beaver Rd

SEE OORIZATION STATION  
DESIGN PER WO# XXXXXXX

BOX 12 ASS VAL 139  
(SEE SHEET 9 FOR  
VALVE BLOW-OFF DETAIL)

OWNERSHIP	← KYTC ROW →		PROPERTY TO BE PURCHASED BY DUKE ENERGY			← KYTC ROW →	
PIPE DETAIL	INSTALL - 769'			BORE - 631'			
SPECIAL CONDITIONS	BRUSH/GRASS			GRAVEL/DRIVEWAY	BRUSH/GRASS	ASPHALT/PAVEMENT	GRAVEL
	12" SWPC X-52 .250" W.T.			12" SWPC X-52 .250" W.T. (POWERCRETE)			



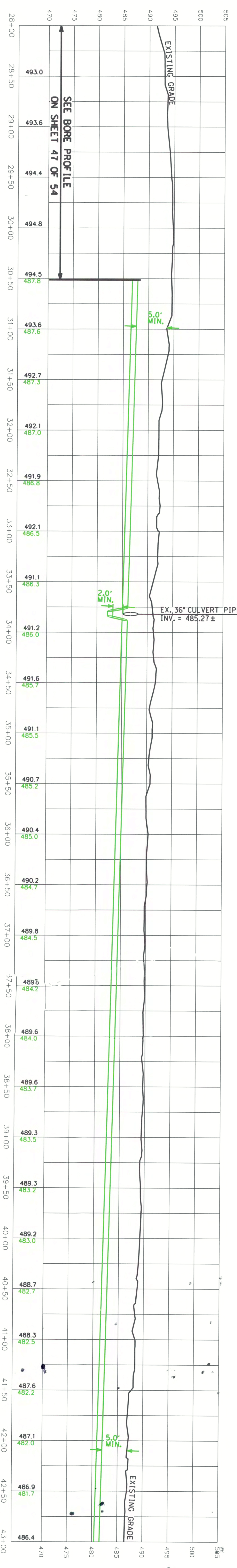
**PROFILE VIEW**  
HORIZONTAL SCALE: 1"=50'  
VERTICAL SCALE: 1"=10'

REVISIONS

REVISION 1: CHANGED CROSSING AT STA 20+00 FROM BORE TO OPEN CUT

APRIL 07, 2017

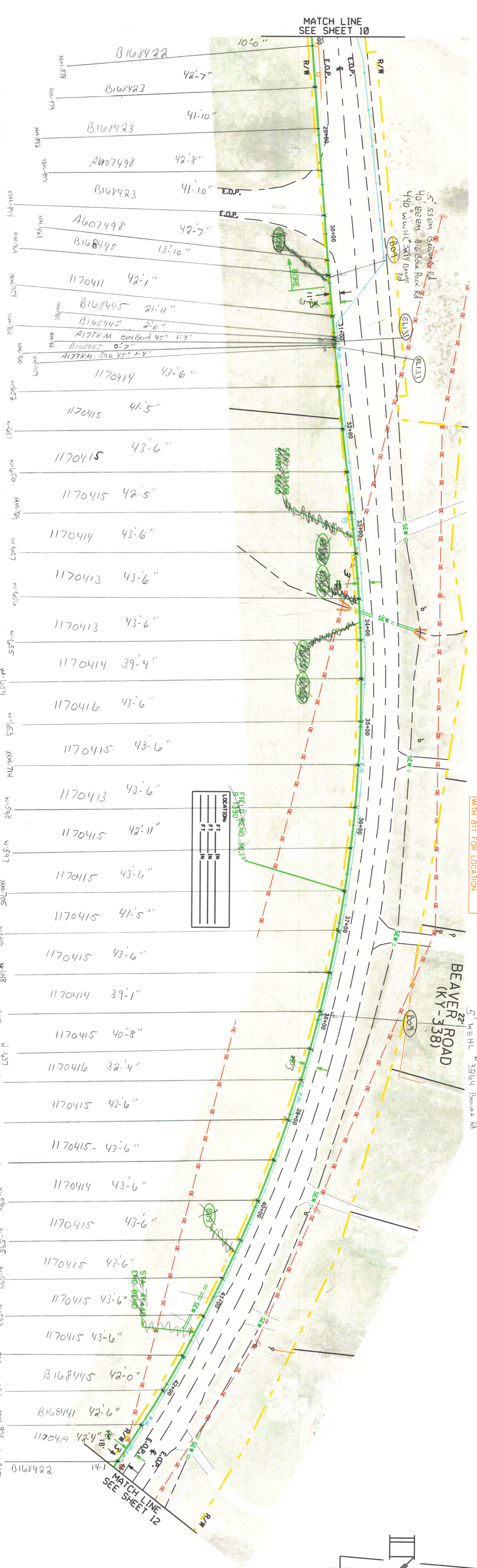
REVISIONS



PROFILE VIEW  
HORIZONTAL SCALE: 1"=50'  
VERTICAL SCALE: 1"=10'

APRIL 07, 2017

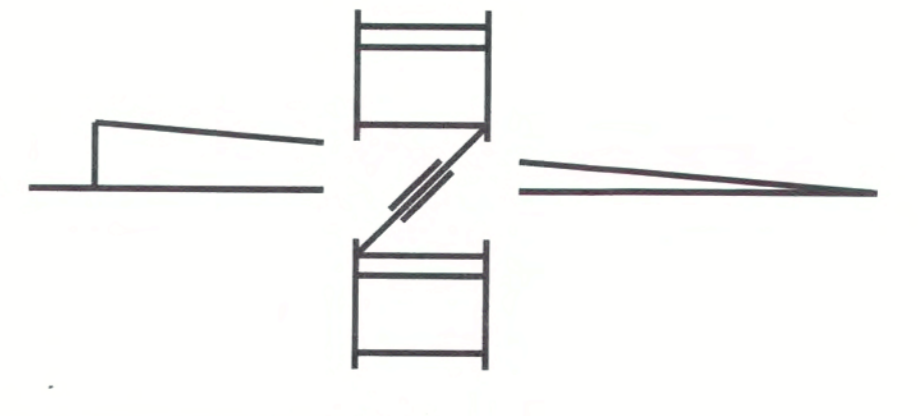
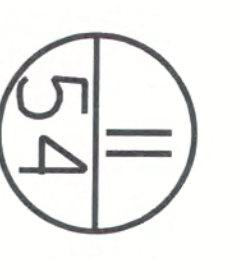
OWNERSHIP	BORE - 253'	
PIPE DETAIL	12" SWPC X-52, 250' W.T. (POWERCRETE)	
SPECIAL CONDITIONS	BRUSH/GRASS	ASPHALT/PAVEMENT
	INSTALL - 1247	
	12" SWPC X-52, 250' W.T.	
	BRUSH/GRASS	BRUSH/GRASS
	GRAVEL/DRIVEWAY	BRUSH/GRASS



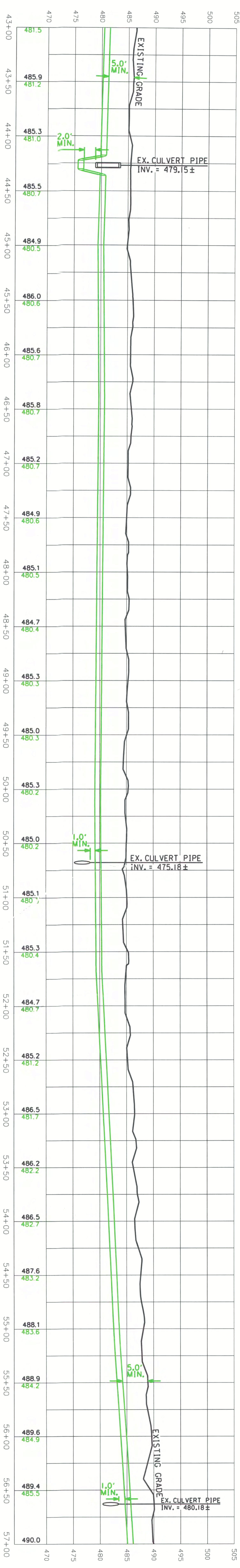
UNDERGROUND TELEPHONE  
PRESENT BUT NOT LOCATED.  
CONTRACTOR TO COORDINATE  
WITH 811 FOR LOCATION

3' SSEM Beaver Rd  
816' SSEM Big Bone Park Rd  
5' WEHL # 3204 Beaver Rd

**GAS DEPARTMENT**  
DUKE ENERGY  
ERLANGER DISTRICT



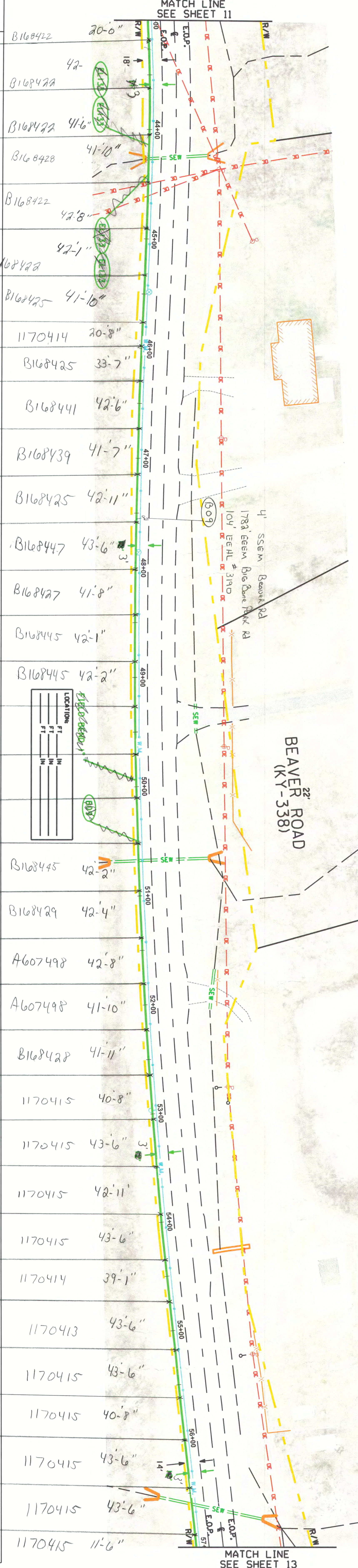
REVISIONS



PROFILE VIEW  
HORIZONTAL SCALE: 1"=50'  
VERTICAL SCALE: 1"=10'

APRIL 07, 2017

OWNERSHIP	PIPE DETAIL	SPECIAL CONDITIONS
B168422	20'-0"	
B168422A	42'	
B168422	41'-6"	
B168422	41'-10"	
B168422	42'-8"	
B168422	42'-1"	
B168425	41'-10"	
1170414	20'-8"	
B168425	33'-7"	
B168441	42'-6"	
B168439	41'-7"	
B168425	42'-11"	
B168447	43'-6"	
B168427	41'-8"	
B168445	42'-1"	
B168445	42'-2"	
B168429	41'-10"	
B168428	41'-11"	
B168447	41'-7"	
B168445	42'-2"	
B168429	42'-4"	
A607498	42'-8"	
A607498	41'-10"	
B168428	41'-11"	
1170415	40'-8"	
1170415	43'-6"	
1170415	42'-11"	
1170415	43'-6"	
1170414	39'-1"	
1170413	43'-6"	
1170415	43'-6"	
1170415	40'-8"	
1170415	43'-6"	
1170415	43'-6"	
1170415	11'-6"	



UNDERGROUND TELEPHONE  
PRESENT BUT NOT LOCATED.  
CONTRACTOR TO COORDINATE  
WITH G11 FOR LOCATION.

GAS DEPARTMENT  
DUKE ENERGY  
ERLANGER DISTRICT



12  
54



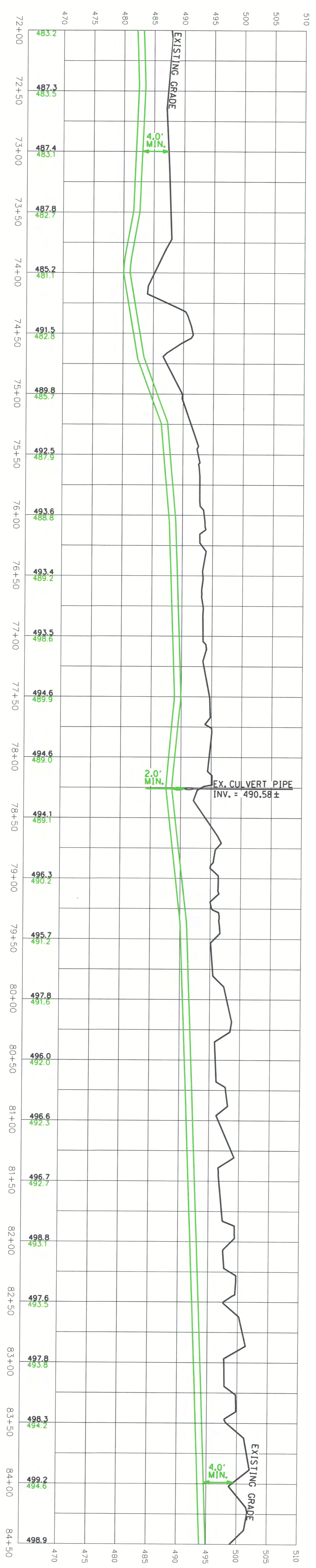


**GAS DEPARTMENT**  
DUKE ENERGY  
ERLANGER DISTRICT

0 25 50

14  
54

OWNERSHIP	W & BARBARA JOSEPH										
PIPE DETAIL	INSTALL - 1250' 12" SWPC X-52 .250" W.I.										
SPECIAL CONDITIONS	BRUSH/GRASS	ASPHALT/PAVEMENT	BRUSH/GRASS	GRAVEL/DRIVEWAY	BRUSH/GRASS	GRAVEL/DRIVEWAY	BRUSH/GRASS	GRAVEL/DRIVEWAY	BRUSH/GRASS	GRAVEL/DRIVEWAY	BRUSH/GRASS

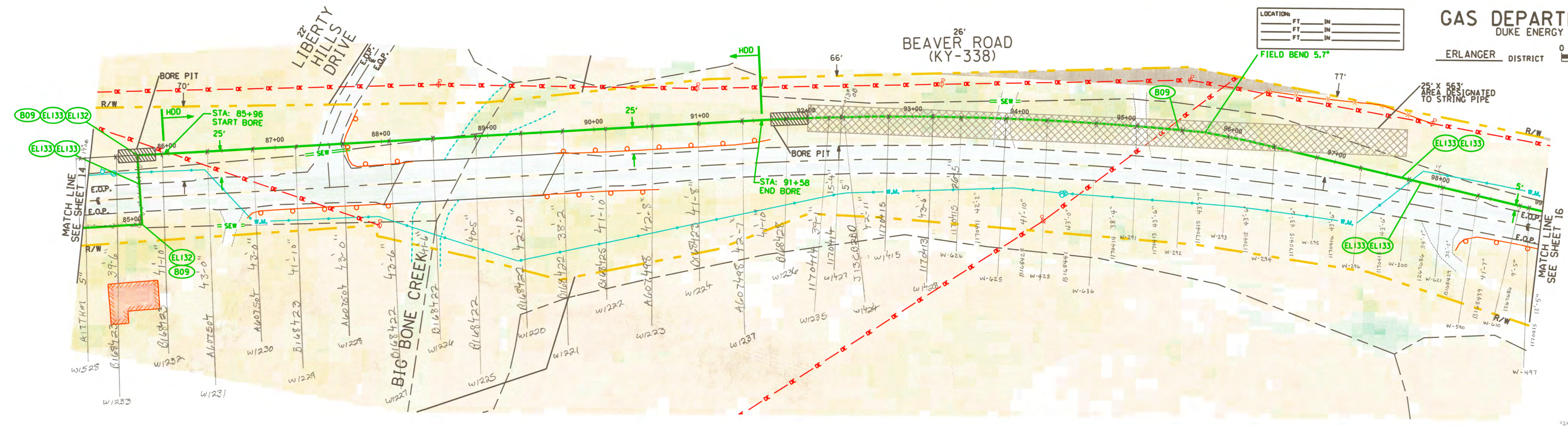


**PROFILE VIEW**  
HORIZONTAL SCALE: 1"=100'  
VERTICAL SCALE: 1"=10'

**REVISIONS**

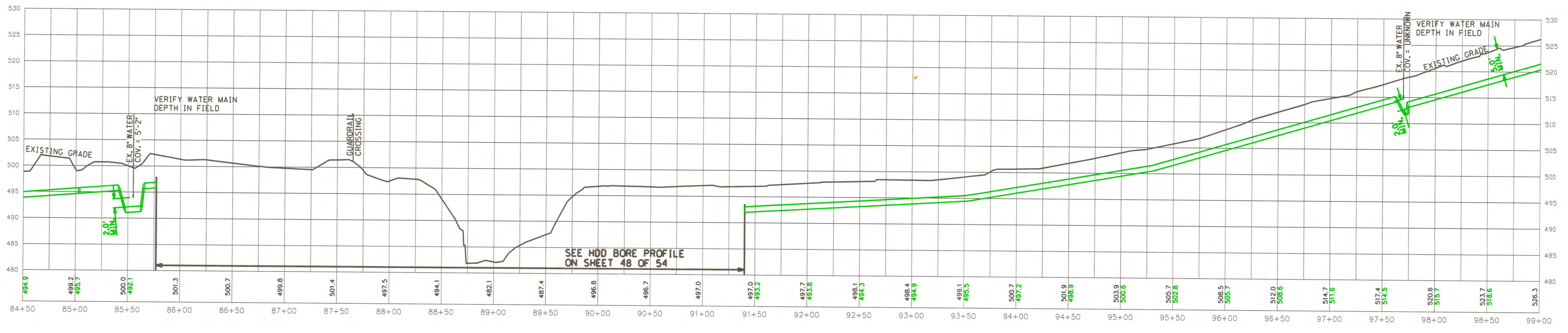
REVISION 1: CHANGED CROSSING AT STA 74+40 FROM BORE TO OPEN CUT.

APRIL 07, 2017



OWNERSHIP				
PIPE DETAIL	INSTALL - 146' 12" SWPC X-52 .250" W.T.	HDD - 563' 12" SWPC X-52 .250" W.T. (POWERCRETE)	INSTALL - 741' 12" SWPC X-52 .250" W.T.	
SPECIAL CONDITIONS	BRUSH/GRASS ASPHALT/PAVEMENT	BRUSH/GRASS ASPHALT/PAVEMENT	BRUSH/GRASS GRAVEL/DRIVEWAY	BRUSH/GRASS GRAVEL/DRIVEWAY

SKY-CDK-006  
STA. 88+94  
BIG BONE CREEK



**PROFILE VIEW**  
HORIZONTAL SCALE: 1"=50'  
VERTICAL SCALE: 1"=10'

REVISIONS

APRIL 07, 2017



