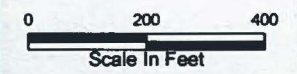


- LEGEND:**
- Centerline
 - Mapped Soil Units
 - Right of Way
 - Study Area

Note: The LOD will be restricted to a 30-foot width at stream and wetland crossings.

BASE MAP SOURCE:
 ESRI World Imagery 2014

SPATIAL DATA SOURCE:
 Soils - USDA, NRCS 2013



*Duke Energy Welton-Big Bone
 Natural Gas Pipeline Project,
 Boone County, Kentucky*

FIGURE NUMBER 2J
SOILS MAP

PN: 673325	DATE: 4/21/2016
CREATED BY: NC	ch2m
REVIEWED BY:	

CONFIDENTIAL PROPRIETARY TRADE SECRET

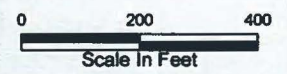


- LEGEND:**
- Centerline
 - Mapped Soil Units
 - Right of Way
 - Study Area

Note: The LOD will be restricted to a 30-foot width at stream and wetland crossings.

BASE MAP SOURCE:
 ESRI World Imagery 2014

SPATIAL DATA SOURCE:
 Soils - USDA, NRCS 2013

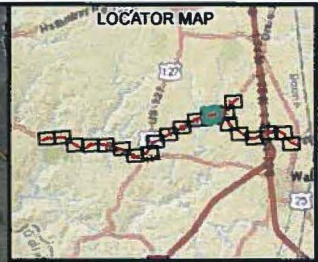


Duke Energy Walton-Big Bone
 Natural Gas Pipeline Project,
 Boone County, Kentucky

FIGURE NUMBER 2K
 SOILS MAP

PN: 673325	DATE: 4/21/2016
CREATED BY: NC	
REVIEWED BY:	



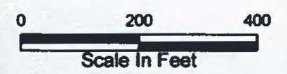


- LEGEND:**
- Centerline
 - Mapped Soil Units
 - Right of Way
 - Study Area

Note: The LOD will be restricted to a 30-foot width at stream and wetland crossings.

BASE MAP SOURCE:
ESRI World Imagery 2014

SPATIAL DATA SOURCE:
Soils - USDA, NRCS 2013



Duke Energy Walton-Big Bone
Natural Gas Pipeline Project,
Boone County, Kentucky

**FIGURE NUMBER 2M
SOILS MAP**

PN: 673325	DATE: 4/21/2016
CREATED BY: NC	
REVIEWED BY:	



\\ncm\nc\gauran\GIS\00 - Proj\01\Drawings - Bulb\Bulb.dwg (10/1/2015 10:51:59 AM) (2) Soils.mxd

CONFIDENTIAL PROPRIETARY TRADE SECRET



\\concepts\gruana\GIS\300_Plan\DU\Drawings\Bioscience.mxd

CONFIDENTIAL PROPRIETARY TRADE SECRET



LEGEND:

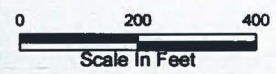
- Centerline
- Mapped Soil Units
- Right of Way
- Study Area



Note: The LOD will be restricted to a 30-foot width at stream and wetland crossings.

BASE MAP SOURCE:
 ESRI World Imagery 2014

SPATIAL DATA SOURCE:
 Soils - USDA, NRCS 2013



Duke Energy Walton-Big Bone
 Natural Gas Pipeline Project,
 Boone County, Kentucky

FIGURE NUMBER 2P
 SOILS MAP

PN: 673325	DATE: 4/21/2016
CREATED BY: NC	
REVIEWED BY:	

CONFIDENTIAL PROPRIETARY TRADE SECRET



CONFIDENTIAL PROPRIETARY TRADE SECRET



LEGEND:

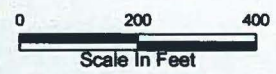
- Centerline
- Mapped Soil Units
- Right of Way
- Study Area

N

Note: The LOD will be restricted to a 30-foot width at stream and wetland crossings.

BASE MAP SOURCE:
ESRI World Imagery 2014

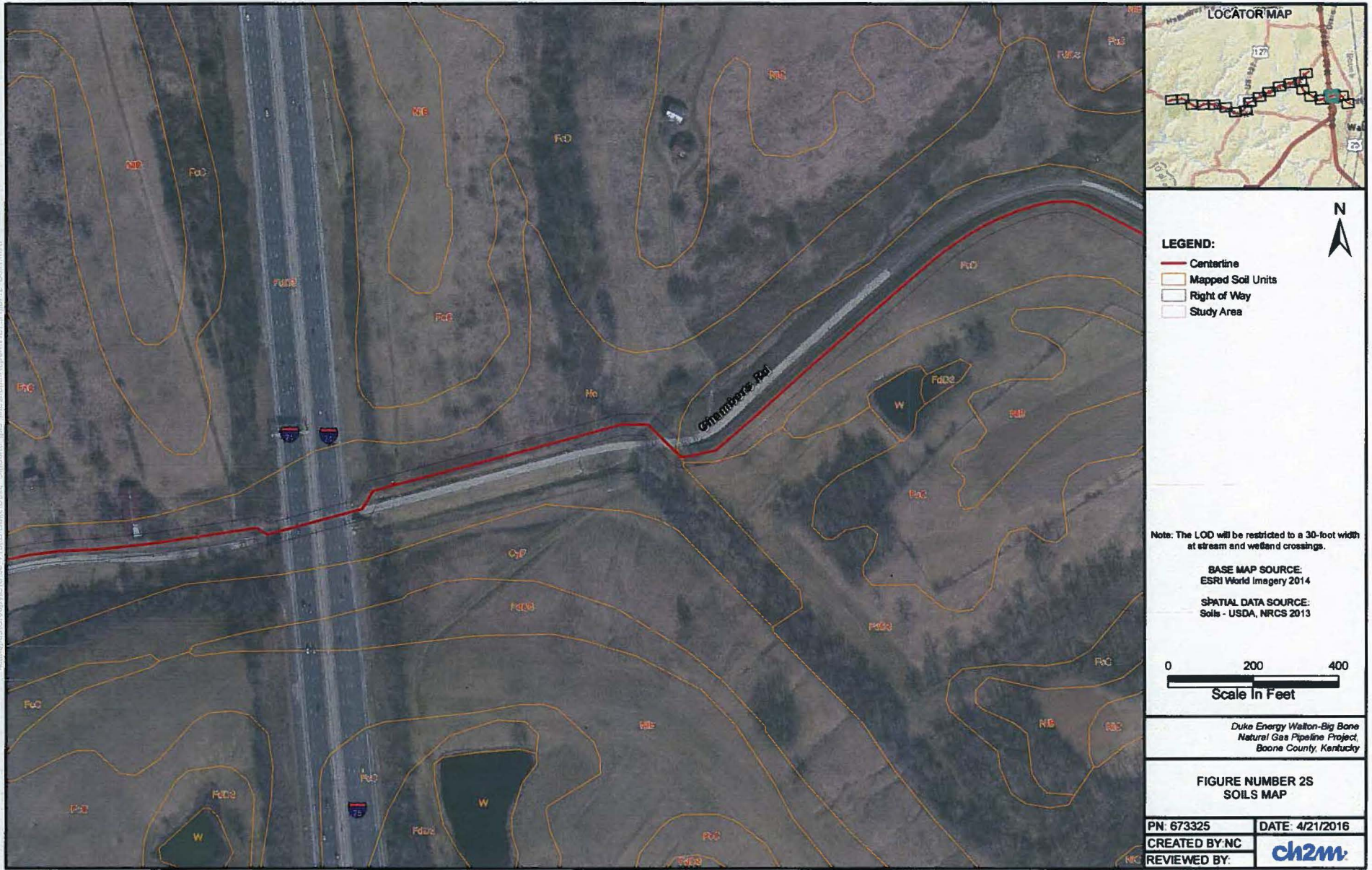
SPATIAL DATA SOURCE:
Soils - USDA, NRCS 2013



Duke Energy Walton-Big Bone
Natural Gas Pipeline Project,
Boone County, Kentucky

**FIGURE NUMBER 2R
SOILS MAP**

PN: 673325	DATE: 4/21/2016
CREATED BY: NC	ch2m
REVIEWED BY:	



\\nc\apps\GIS\Projects\2016\20160421\20160421_DukeEnergyWaltonBigBone_NaturalGasPipelineProject_SoilsMap.mxd



CONFIDENTIAL PROPRIETARY TRADE SECRET



- LEGEND:**
- Centerline
 - Mapped Soil Units
 - Right of Way
 - Study Area

Note: The LOD will be restricted to a 30-foot width at stream and wetland crossings.

BASE MAP SOURCE:
 ESRI World Imagery 2014

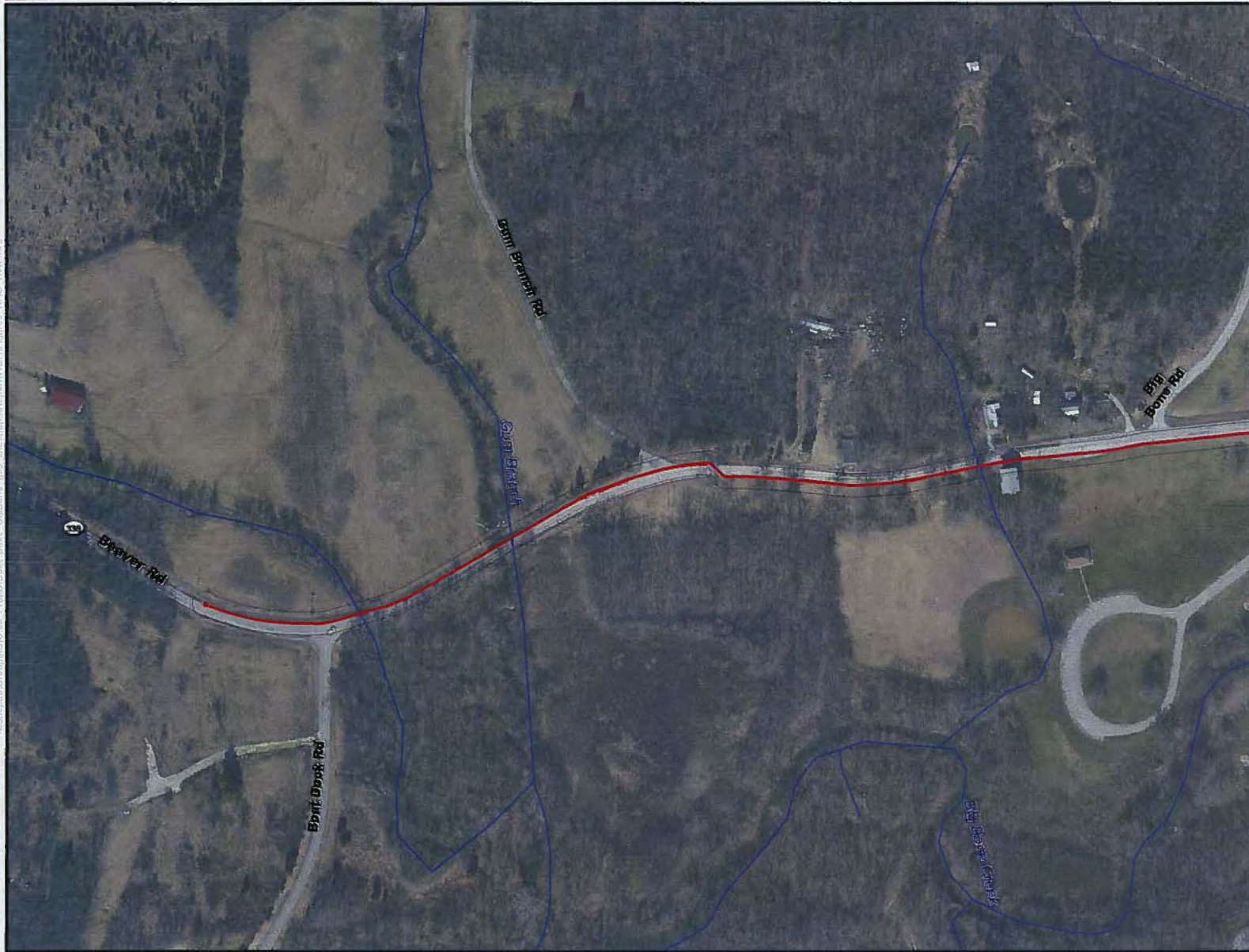
SPATIAL DATA SOURCE:
 Soils - USDA, NRCS 2013



Duke Energy Walton-Big Bone
 Natural Gas Pipeline Project,
 Boone County, Kentucky

FIGURE NUMBER 2U
 SOILS MAP

PN: 673325	DATE: 4/21/2016
CREATED BY: NC	
REVIEWED BY:	



LEGEND:

- Centerline
- Stream (NHD)
- Wetland (NWI)
- Right of Way
- Study Area

N

Note: The LOD will be restricted to a 30-foot width at stream end wetland crossings.

SPATIAL DATA SOURCE:
Stream - USGS, National Hydrography Dataset
Wetland - FWS, NWI Wetlands

BASE MAP SOURCE:
ESRI World Imagery 2014



Duke Energy Walton-Big Bone
Natural Gas Pipeline Project,
Boone County, Kentucky

**FIGURE NUMBER 3A
NATIONAL WETLAND INVENTORY AND
NATIONAL HYDROGRAPHY DATASET**

PN: 673325	DATE: 4/21/2016
CREATED BY: NC	ch2m
REVIEWED BY:	

\\nc\nc\c\source\GIS\00 - Proj\DW\Doc\Doc - Draft\Map\Bene\Bene\Fig\3A - NHD - NWI.mxd

CONFIDENTIAL PROPRIETARY TRADE SECRET



- LEGEND:**
- Centerline
 - Stream (NHD)
 - ▨ Wetland (NWI)
 - Right of Way
 - Study Area



Note: The LOD will be restricted to a 30-foot width at stream and wetland crossings.

SPATIAL DATA SOURCE:
 Stream - USGS, National Hydrography Dataset
 Wetland - FWS, NWI Wetlands

BASE MAP SOURCE:
 ESRI World Imagery 2014



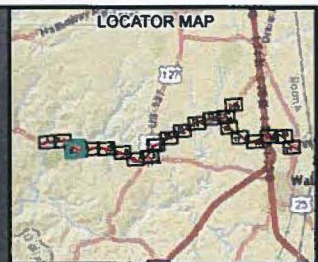
Duke Energy Walton-Big Bone
 Natural Gas Pipeline Project,
 Boone County, Kentucky

FIGURE NUMBER 3B
NATIONAL WETLAND INVENTORY AND
NATIONAL HYDROGRAPHY DATASET

PN: 673325	DATE: 4/21/2016
CREATED BY: NC	ch2m
REVIEWED BY:	

I:\projects\GIS\9901_P00101\Drawings\BigBone.cws I:\projects\GIS\9901_P00101\Drawings\NHD_NWI.mxd

CONFIDENTIAL PROPRIETARY TRADE SECRET



LEGEND:

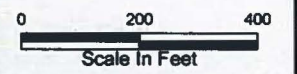
- Centerline
- Stream (NHD)
- Wetland (NWI)
- Right of Way
- Study Area

N

Note: The LOD will be restricted to a 30-foot width at stream and wetland crossings.

SPATIAL DATA SOURCE:
Stream - USGS, National Hydrography Dataset
Wetland - FWS, NWI Wetlands

BASE MAP SOURCE:
ESRI World Imagery 2014



Duke Energy Walton-Big Bone
Natural Gas Pipeline Project,
Boone County, Kentucky

**FIGURE NUMBER 3C
NATIONAL WETLAND INVENTORY AND
NATIONAL HYDROGRAPHY DATASET**

PN: 673325	DATE: 4/21/2016
CREATED BY: NC	ch2m
REVIEWED BY:	

\\server01\groups\CUS001\proj\01\Drawings\Boone\gis\InfoMap\Report\FEB\barack_brdg_010616.mxd

51
8015
8016



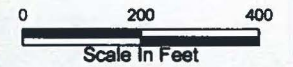
- LEGEND:**
- Centerline
 - Stream (NHD)
 - ▨ Wetland (NWI)
 - Right of Way
 - Study Area



Note: The LOD will be restricted to a 30-foot width at stream and wetland crossings.

SPATIAL DATA SOURCE:
Stream - USGS, National Hydrography Dataset
Wetland- FWS, NWI Wetlands

BASE MAP SOURCE:
ESRI World Imagery 2014



Duke Energy Walton-Big Bone
Natural Gas Pipeline Project,
Boone County, Kentucky

FIGURE NUMBER 3D
NATIONAL WETLAND INVENTORY AND
NATIONAL HYDROGRAPHY DATASET

PN: 673325	DATE: 4/21/2016
CREATED BY: NC	
REVIEWED BY:	

CONFIDENTIAL PROPRIETARY TRADE SECRET



LEGEND:

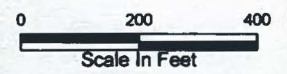
- Centerline
- Stream (NHD)
- ▨ Wetland (NWI)
- Right of Way
- Study Area



Note: The LOD will be restricted to a 30-foot width at stream and wetland crossings.

SPATIAL DATA SOURCE:
 Stream - USGS, National Hydrography Dataset
 Wetland - FWS, NWI Wetlands

BASE MAP SOURCE:
 ESRI World Imagery 2014



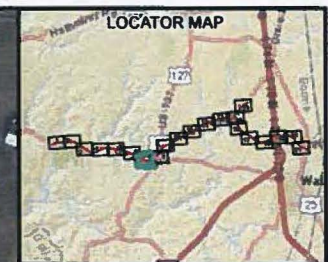
Duke Energy Walton-Big Bone
 Natural Gas Pipeline Project,
 Boone County, Kentucky

**FIGURE NUMBER 3E
 NATIONAL WETLAND INVENTORY AND
 NATIONAL HYDROGRAPHY DATASET**

PN: 673325	DATE: 4/21/2016
CREATED BY: NC	ch2m
REVIEWED BY:	

C:\workspace\GIS\03000 - Final\DWG\Draw - Beabarra.mxd; Beabarra.mxd; FinalMap\Export\NWD\BEABARRA_3E_NWI.mxd

CONFIDENTIAL PROPRIETARY TRADE SECRET



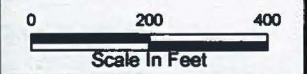
LEGEND:

- Centerline
- Stream (NHD)
- ▨ Wetland (NWI)
- Right of Way
- Study Area

Note: The LOD will be restricted to a 30-foot width at stream and wetland crossings.

SPATIAL DATA SOURCE:
 Stream - USGS, National Hydrography Dataset
 Wetland - FWS, NWI Wetlands

BASE MAP SOURCE:
 ESRI World Imagery 2014



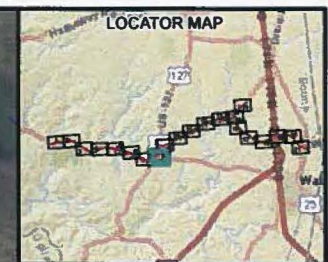
Duke Energy Walton-Big Bone
 Natural Gas Pipeline Project,
 Boone County, Kentucky

**FIGURE NUMBER 3G
 NATIONAL WETLAND INVENTORY AND
 NATIONAL HYDROGRAPHY DATASET**

PN: 673325	DATE: 4/21/2016
CREATED BY: NC	ch2m
REVIEWED BY:	

C:\projects\GIS\0001_Produ\DUK\DUK_BigBone.nls (local\State\Separate\DEVELOPERS\NHD_NWI.mxd)

CONFIDENTIAL PROPRIETARY TRADE SECRET



LEGEND:

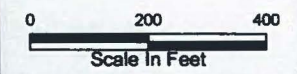
- Centerline
- Stream (NHD)
- Wetland (NWI)
- Right of Way
- Study Area

N

Note: The LOD will be restricted to a 30-foot width at stream and wetland crossings.

SPATIAL DATA SOURCE:
 Stream - USGS, National Hydrography Dataset
 Wetland - FWS, NWI Wetlands

BASE MAP SOURCE:
 ESRI World Imagery 2014



Duke Energy Walton-Big Bone
 Natural Gas Pipeline Project,
 Boone County, Kentucky

**FIGURE NUMBER 3H
 NATIONAL WETLAND INVENTORY AND
 NATIONAL HYDROGRAPHY DATASET**

PN: 673325	DATE: 4/21/2016
CREATED BY: NC	
REVIEWED BY:	

G:\projects\Boone\GIS\000 - Prop\DW\Doc\Draw - Big Bone - mrs. Joe\Map\3h\3h\Wetland\Wetland3_H1.D, NWI.mxd

CONFIDENTIAL PROPRIETARY TRADE SECRET



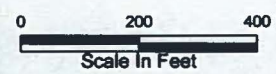
- LEGEND:**
- Centerline
 - Stream (NHD)
 - ▨ Wetland (NWI)
 - Right of Way
 - Study Area



Note: The LOD will be restricted to a 30-foot width at stream and wetland crossings.

SPATIAL DATA SOURCE:
 Stream - USGS, National Hydrography Dataset
 Wetland - FWS, NWI Wetlands

BASE MAP SOURCE:
 ESRI World Imagery 2014



Duke Energy Walton-Big Bone
 Natural Gas Pipeline Project,
 Boone County, Kentucky

FIGURE NUMBER 31
NATIONAL WETLAND INVENTORY AND
NATIONAL HYDROGRAPHY DATASET

PN: 673325	DATE: 4/21/2016
CREATED BY: NC	ch2m
REVIEWED BY:	

C:\arcgis\Ground\C18100_P16131\DrawData\Burbank.mxd, ArcMap, mxd, Issue\Issue\Report\VC\Report3_NWCI_NWMI.mxd

CONFIDENTIAL PROPRIETARY TRADE SECRET



LEGEND:

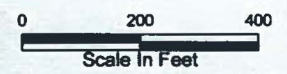
- Centerline
- Stream (NHD)
- ▨ Wetland (NWI)
- Right of Way
- Study Area



Note: The LOD will be restricted to a 30-foot width at stream and wetland crossings.

SPATIAL DATA SOURCE:
 Stream - USGS, National Hydrography Dataset
 Wetland - FWS, NWI Wetlands

BASE MAP SOURCE:
 ESRI World Imagery 2014



Duke Energy Walton-Big Bone
 Natural Gas Pipeline Project,
 Boone County, Kentucky

FIGURE NUMBER 3J
NATIONAL WETLAND INVENTORY AND
NATIONAL HYDROGRAPHY DATASET

PN: 673325	DATE: 4/21/2016
CREATED BY: NC	
REVIEWED BY:	

C:\Users\Gagana\GIS\001_Produ\3DView\Duke_BigBone.nas_Inv\Map\Beneath\GeoBeneath3_Ar10_NWI.mxd



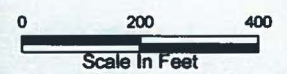
- LEGEND:**
- Centerline
 - Stream (NHD)
 - ▨ Wetland (NWI)
 - Right of Way
 - Study Area



Note: The LOD will be restricted to a 30-foot width at stream and wetland crossings.

SPATIAL DATA SOURCE:
Stream - USGS, National Hydrography Dataset
Wetland - FWS, NWI Wetlands

BASE MAP SOURCE:
ESRI World Imagery 2014



Duke Energy Walton-Big Bone
Natural Gas Pipeline Project,
Boone County, Kentucky

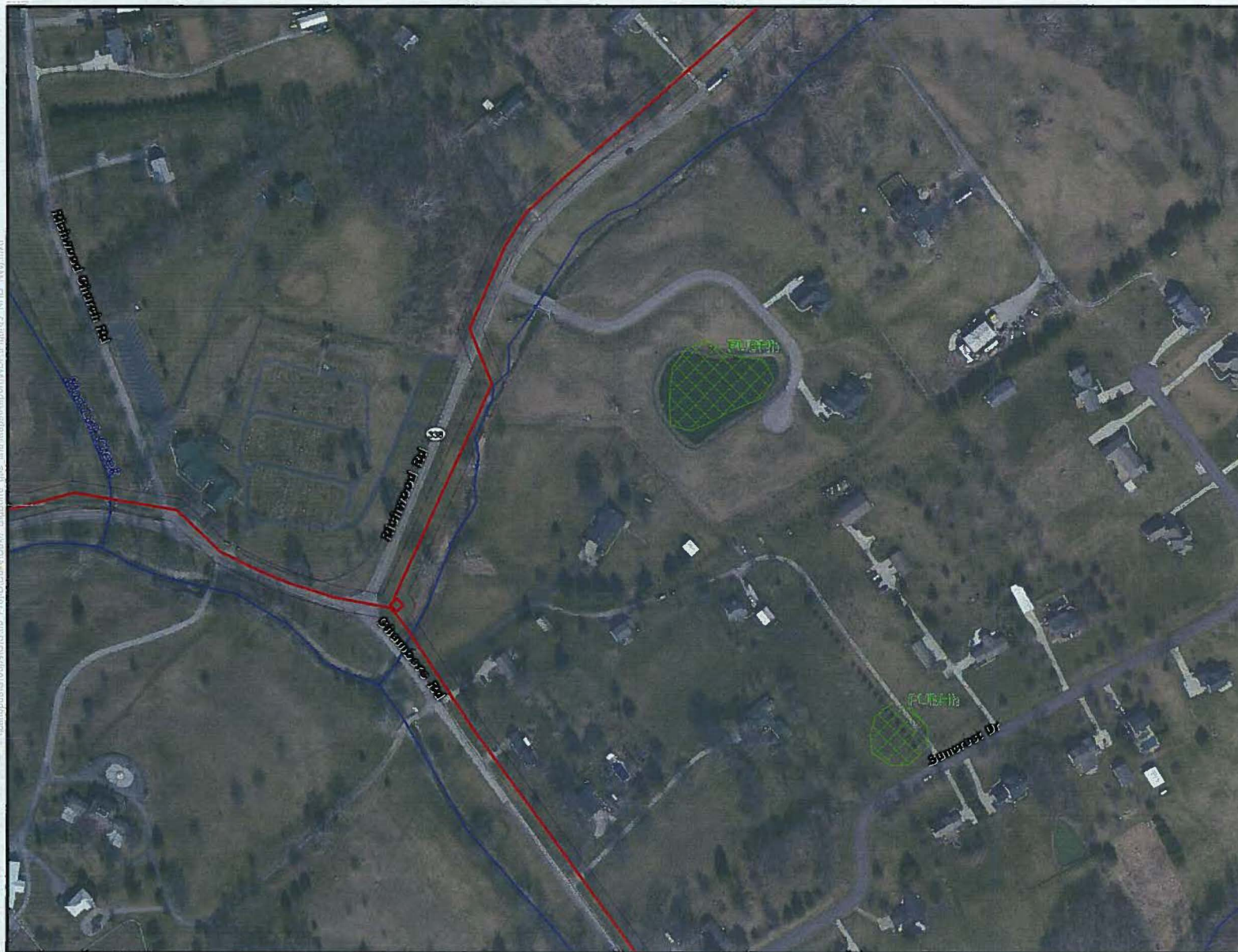
**FIGURE NUMBER 3L
NATIONAL WETLAND INVENTORY AND
NATIONAL HYDROGRAPHY DATASET**

PN: 673325	DATE: 4/21/2016
CREATED BY: NC	
REVIEWED BY:	

C:\arcgis\GIS000_P\01\DD\Doc\Doc\Boone.nct\fig\Map\Buckoff\001\Fig3L.mxd



C:\arcgis\CO\work\673325\Proj\DATA\ch2m\ch2m.aprx



LEGEND:

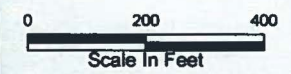
- Centerline
- Stream (NHD)
- ▨ Wetland (NWI)
- Right of Way
- Study Area



Note: The LOD will be restricted to a 30-foot width at stream and wetland crossings.

SPATIAL DATA SOURCE:
 Stream - USGS, National Hydrography Dataset
 Wetland - FWS, NWI Wetlands

BASE MAP SOURCE:
 ESRI World Imagery 2014



Duke Energy Walton-Big Bone
 Natural Gas Pipeline Project,
 Boone County, Kentucky

**FIGURE NUMBER 3N
 NATIONAL WETLAND INVENTORY AND
 NATIONAL HYDROGRAPHY DATASET**

PN: 673325	DATE: 4/21/2016
CREATED BY: NC	
REVIEWED BY:	

CONFIDENTIAL PROPRIETARY TRADE SECRET



LEGEND:

- Centerline
- Stream (NHD)
- ▧ Wetland (NWI)
- Right of Way
- Study Area



Note: The LOD will be restricted to a 30-foot width at stream and wetland crossings.

SPATIAL DATA SOURCE:
 Stream - USGS, National Hydrography Dataset
 Wetland - FWS, NWI Wetlands

BASE MAP SOURCE:
 ESRI World Imagery 2014



Duke Energy Walton-Big Bone
 Natural Gas Pipeline Project,
 Boone County, Kentucky

FIGURE NUMBER 30
NATIONAL WETLAND INVENTORY AND
NATIONAL HYDROGRAPHY DATASET

PN: 673325	DATE: 4/21/2016
CREATED BY: NC	
REVIEWED BY:	



LEGEND:

- Centerline (Red line)
- Stream (NHD) (Blue line)
- Wetland (NWI) (Green hatched box)
- Right of Way (White box with black border)
- Study Area (Pink box)

N
↑

Note: The LOD will be restricted to a 30-foot width at stream and wetland crossings.

SPATIAL DATA SOURCE:
Stream - USGS, National Hydrography Dataset
Wetland - FWS, NWI Wetlands

BASE MAP SOURCE:
ESRI World Imagery 2014



Duke Energy Walton-Big Bone
Natural Gas Pipeline Project,
Boone County, Kentucky

**FIGURE NUMBER 3P
NATIONAL WETLAND INVENTORY AND
NATIONAL HYDROGRAPHY DATASET**

PN: 673325	DATE: 4/21/2016
CREATED BY NC	ch2m
REVIEWED BY:	

\\nas001\geog\proj\GIS\10\Draw - Draft\Bent - same - Rich\Map\Rebar\10\CP\Figure3_P16.mxd



LEGEND:

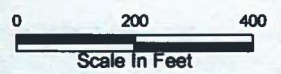
- Centerline
- Stream (NHD)
- Wetland (NWI)
- Right of Way
- Study Area

N

Note: The LOD will be restricted to a 30-foot width at stream and wetland crossings.

SPATIAL DATA SOURCE:
Stream - USGS, National Hydrography Dataset
Wetland - FWS, NWI Wetlands

BASE MAP SOURCE:
ESRI World Imagery 2014



*Duke Energy Walton-Big Bone
Natural Gas Pipeline Project,
Boone County, Kentucky*

**FIGURE NUMBER 3Q
NATIONAL WETLAND INVENTORY AND
NATIONAL HYDROGRAPHY DATASET**

PN: 673325	DATE: 4/21/2016
CREATED BY: NC	
REVIEWED BY:	



- LEGEND:**
- Centerline
 - Stream (NHD)
 - Wetland (NWI)
 - Right of Way
 - Study Area



Note: The LOD will be restricted to a 30-foot width at stream and wetland crossings.

SPATIAL DATA SOURCE:
Stream - USGS, National Hydrography Dataset
Wetland - FWS, NWI Wetlands

BASE MAP SOURCE:
ESRI World Imagery 2014



Duke Energy Walton-Big Bone
Natural Gas Pipeline Project,
Boone County, Kentucky

FIGURE NUMBER 3R
NATIONAL WETLAND INVENTORY AND
NATIONAL HYDROGRAPHY DATASET

PN: 673325	DATE: 4/21/2016
CREATED BY: NC	ch2m
REVIEWED BY:	



LEGEND:

- Centerline
- Stream (NHD)
- Wetland (NWI)
- Right of Way
- Study Area



Note: The LOD will be restricted to a 30-foot width at stream and wetland crossings.

SPATIAL DATA SOURCE:
Stream - USGS, National Hydrography Dataset
Wetland - FWS, NWI Wetlands

BASE MAP SOURCE:
ESRI World Imagery 2014



Duka Energy Walton-Big Bone
Natural Gas Pipeline Project,
Boone County, Kentucky

**FIGURE NUMBER 3S
NATIONAL WETLAND INVENTORY AND
NATIONAL HYDROGRAPHY DATASET**

PN: 673325	DATE: 4/21/2016
CREATED BY: NC	ch2m
REVIEWED BY:	



LEGEND:

- Centerline
- Stream (NHD)
- ▨ Wetland (NWI)
- Right of Way
- Study Area



Note: The LOD will be restricted to a 30-foot width at stream and wetland crossings.

SPATIAL DATA SOURCE:
Stream - USGS, National Hydrography Dataset
Wetland - FWS, NWI Wetlands

BASE MAP SOURCE:
ESRI World Imagery 2014

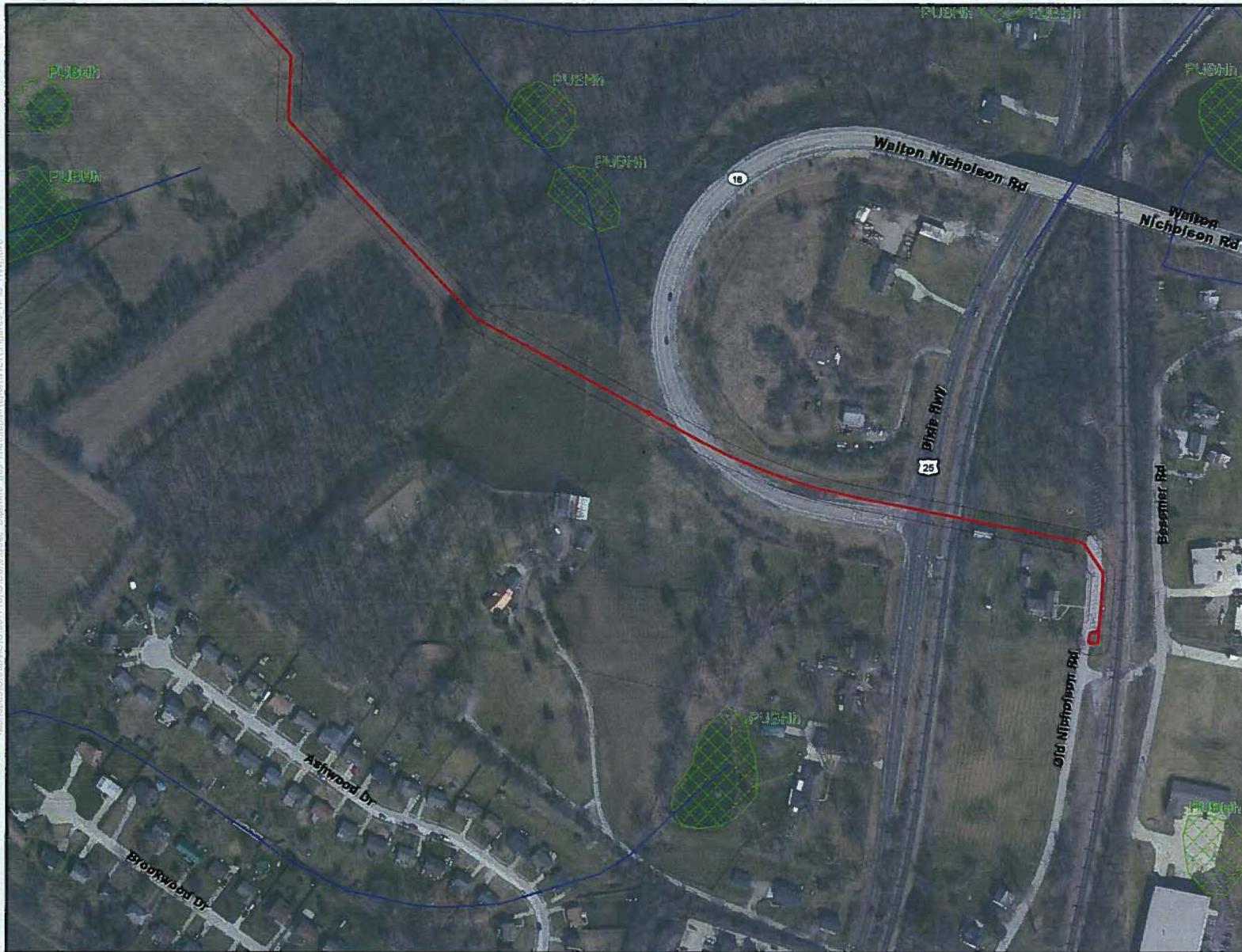


Duke Energy Walton-Big Bone
Natural Gas Pipeline Project,
Boone County, Kentucky

**FIGURE NUMBER 3T
NATIONAL WETLAND INVENTORY AND
NATIONAL HYDROGRAPHY DATASET**

PN: 673325	DATE: 4/21/2016
CREATED BY: NC	ch2m
REVIEWED BY:	

\\arcgis01\arcgis\GIS\0001_Proj\U\Due\U\tr. BlueBarre_gas_line\kaps\mform\WOP\figure3T_NHD_NWI.mxd



LEGEND:

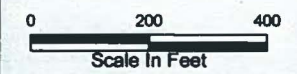
- Centerline
- Stream (NHD)
- ▨ Wetland (NWI)
- Right of Way
- Study Area

N
↑

Note: The LOD will be restricted to a 30-foot width at stream and wetland crossings.

SPATIAL DATA SOURCE:
Stream - USGS, National Hydrography Dataset
Wetland - FWS, NWI Wetlands

BASE MAP SOURCE:
ESRI World Imagery 2014



Duke Energy Walton-Big Bone
Natural Gas Pipeline Project,
Boone County, Kentucky

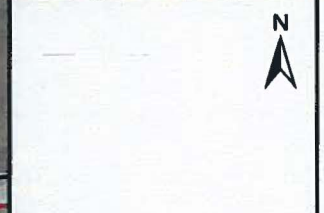
**FIGURE NUMBER 3U
NATIONAL WETLAND INVENTORY AND
NATIONAL HYDROGRAPHY DATASET**

PN: 673325	DATE: 4/21/2016
CREATED BY: NC	ch2m
REVIEWED BY:	

L:\arcgis\GIS\Projects\2016\20160421\20160421_25.mxd



\\scarcas\cresna\GIS\DWI_Proj\DWI\CDK\CDK_Biotope.mxd Local\apps\Bamer\WOP\Bamer6_Delineated_Features_Review_20160416.mxd



- LEGEND:**
- Centerline
 - Right of Way
 - Study Area
 - Stream (GAI Delineated)
 - Stream (CH Delineated)
 - Pond (CH Delineated)
 - Wetland (CH Delineated)**
 - PEM
 - PFO
 - PSS

Note: The LOD will be restricted to a 30-foot width at stream and wetland crossings.

BASE MAP SOURCE:
ESRI World Imagery 2014



Duke Energy Walton-Big Bone
Natural Gas Pipeline Project,
Boone County, Kentucky

**FIGURE 4B
WETLAND AND WATERBODIES
DELINEATION MAP**

PN: 673325	DATE: 4/21/2016
CREATED BY: NC	
REVIEWED BY:	

\\scm001\geopna\GIS\300 - Proj\300\Draw - Big Bone.nas (work\kca\h\outh\095\Draw) Delineated Figures Review 20160419.mxd

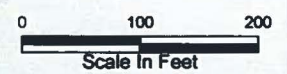


LEGEND:

- Centerline
- Right of Way
- Study Area
- Stream (GAI Delineated)
- Stream (CH Delineated)
- Pond (CH Delineated)
- Wetland (CH Delineated)**
- PEM
- PFO
- PSS

Note: The LOD will be restricted to a 30-foot width at stream and wetland crossings.

BASE MAP SOURCE:
ESRI World Imagery 2014



Duke Energy Walton-Big Bone
Natural Gas Pipeline Project,
Boone County, Kentucky

**FIGURE 4C
WETLAND AND WATERBODIES
DELINEATION MAP**

PN: 673325	DATE: 4/21/2016
CREATED BY: NC	
REVIEWED BY:	

\\source\geoproc\GIS\1000_Proj\01\Drawings_Basemap.mxd; \\\source\geoproc\GIS\1000\Drawings\Delin\Wetland\Final\Map_20160418.mxd



LEGEND:

- Centerline
- Right of Way
- Study Area
- Stream (GAI Delineated)
- Stream (CH Delineated)
- Pond (CH Delineated)
- Wetland (CH Delineated)**
 - PEM
 - PFO
 - PSS

Note: The LOD will be restricted to a 30-foot width at stream and wetland crossings.

BASE MAP SOURCE:
ESRI World Imagery 2014



Duke Energy Walton-Big Bone
Natural Gas Pipeline Project,
Boone County, Kentucky

**FIGURE 4D
WETLAND AND WATERBODIES
DELINEATION MAP**

PN: 673325	DATE: 4/21/2016
CREATED BY: NC	
REVIEWED BY:	

I:\arcgis\Geoproc\CIS000_ Proj\GIS\Draw\Draw_BigBone.nas File\Mapa\3arcz\W\05\05\04\Delin\Wetland\Entire\Map_20160418.mxd



LEGEND:

- Centerline
- Right of Way
- Study Area
- Stream (GAI Delineated)
- Stream (CH Delineated)
- Pond (CH Delineated)
- Wetland (CH Delineated)**
- PEM
- PFO
- PSS

Note: The LOD will be restricted to a 30-foot width at stream and wetland crossings.

BASE MAP SOURCE:
ESRI World Imagery 2014



Duke Energy Walton-Big Bone
Natural Gas Pipeline Project,
Boone County, Kentucky

**FIGURE 4E
WETLAND AND WATERBODIES
DELINEATION MAP**

PN: 673325	DATE: 4/21/2016
CREATED BY: NC	
REVIEWED BY:	

\\server1\Gis\work\GIS\000_Proj\DC\Drawings\Big Bone\aps_line\Mapa\Parcel\W009\Parcel_Delineated_Features_Peace_20160418.mxd

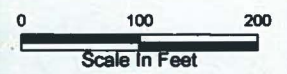


LEGEND:

- Centerline
- Right of Way
- Study Area
- Stream (GAI Delineated)
- Stream (CH Delineated)
- Pond (CH Delineated)
- Wetland (CH Delineated)**
- PEM
- PFO
- PSS

Note: The LOD will be restricted to a 30-foot width at stream and wetland crossings.

BASE MAP SOURCE:
ESRI World Imagery 2014



Duke Energy Walton-Big Bone
Natural Gas Pipeline Project,
Boone County, Kentucky

**FIGURE 4F
WETLAND AND WATERBODIES
DELINEATION MAP**

PN: 673325	DATE: 4/21/2016
CREATED BY: NC	
REVIEWED BY:	



\\cm\apps\GIS\GIS\000_Proj\GIS\Drawings\BigBone_onsite\Map\Borembody\06\Borembody\Delineted_Features_Boremb_20160419.mxd