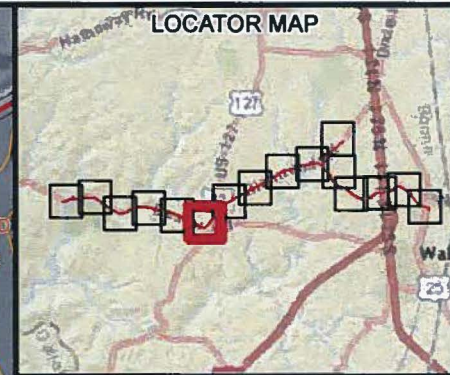






CONFIDENTIAL PROPRIETARY TRADE SECRET

CREATED BY:

Duke/Duke - BigBone_gas_line/Maps/Report/WDR/figure2_Soils_8_11.mxd

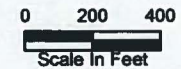


LEGEND:

-  Centerline
-  Mapped Soil Units
-  Construction Corridor
-  Study Area

BASE MAP SOURCE:
ESRI World Imagery 2014

SPATIAL DATA SOURCE:
Soils - USDA, NRCS 2013



Duke Energy Walton-Big Bone
Natural Gas Pipeline Project,
Boone County, Kentucky

**FIGURE NUMBER 2F
SOILS MAP**

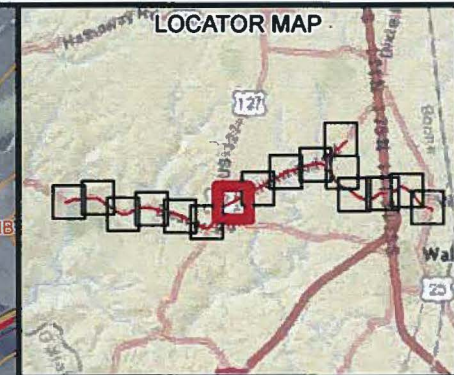
PN: 673325

DATE: 4/25/2016



CONFIDENTIAL PROPRIETARY TRADE SECRET

CREATED BY



- LEGEND:**
- Centerline
 - Mapped Soil Units
 - Construction Corridor
 - Study Area

BASE MAP SOURCE:
ESRI World Imagery 2014

SPATIAL DATA SOURCE:
Soils - USDA, NRCS 2013



Duke Energy Walton-Big Bone
Natural Gas Pipeline Project,
Boone County, Kentucky

FIGURE NUMBER 2G
SOILS MAP

PN: 673325
DATE: 4/25/2016

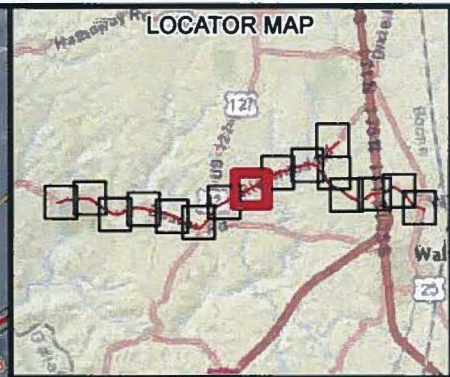


Duke\Duke_BigBone_gas_line\Maps\Report\WDR\Figure2_Soils_8_11.mxd

CONFIDENTIAL PROPRIETARY TRADE SECRET

CREATED BY

Duke\Duke_BigBone_gas_line\Maps\Report\WDR\Figure2_Soils_8_11.mxd



- LEGEND:**
- Centerline
 - Mapped Soil Units
 - Construction Corridor
 - Study Area

BASE MAP SOURCE:
ESRI World Imagery 2014

SPATIAL DATA SOURCE:
Soils - USDA, NRCS 2013



Duke Energy Walton-Big Bone
Natural Gas Pipeline Project,
Boone County, Kentucky

FIGURE NUMBER 2H
SOILS MAP

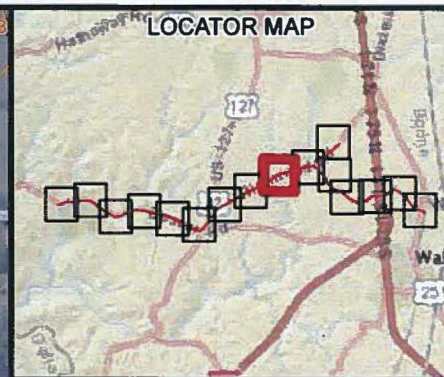
PN: 673325
DATE: 4/25/2016







CONFIDENTIAL PROPRIETARY TRADE SECRET

CREATED BY

Duke\Bonne Big Bone Gas Line\Maps\Report\WDR\Figure2_Soils_8_11.mxd



LEGEND:

-  Centerline
-  Mapped Soil Units
-  Construction Corridor
-  Study Area

BASE MAP SOURCE:
ESRI World Imagery 2014

SPATIAL DATA SOURCE:
Soils - USDA, NRCS 2013



Duke Energy Walton-Big Bone
Natural Gas Pipeline Project,
Boone County, Kentucky

FIGURE NUMBER 21
SOILS MAP

PN: 673325

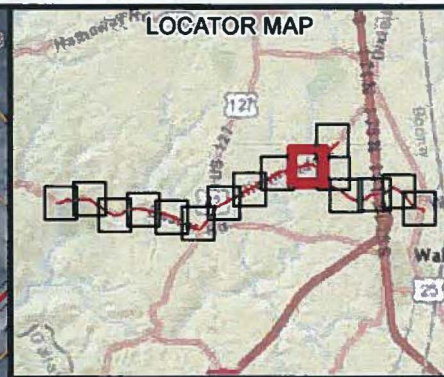
DATE: 4/25/2016



CONFIDENTIAL PROPRIETARY TRADE SECRET

CREATED BY

Duke\duke.BigBone_gas_line\Maps\Report\WDR\Figure2_Soils_8_11.mxd



LEGEND:

- Centerline
- Mapped Soil Units
- Construction Corridor
- Study Area

BASE MAP SOURCE:
ESRI World Imagery 2014

SPATIAL DATA SOURCE:
Soils - USDA, NRCS 2013



Duke Energy Walton-Big Bone
Natural Gas Pipeline Project,
Boone County, Kentucky

FIGURE NUMBER 2J
SOILS MAP

PN: 673325

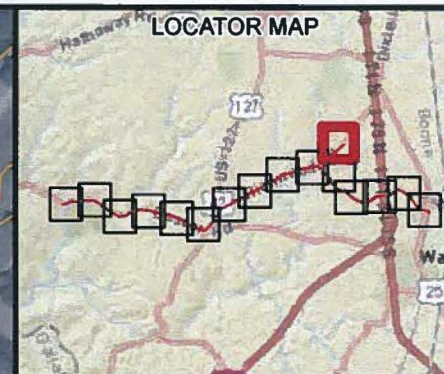
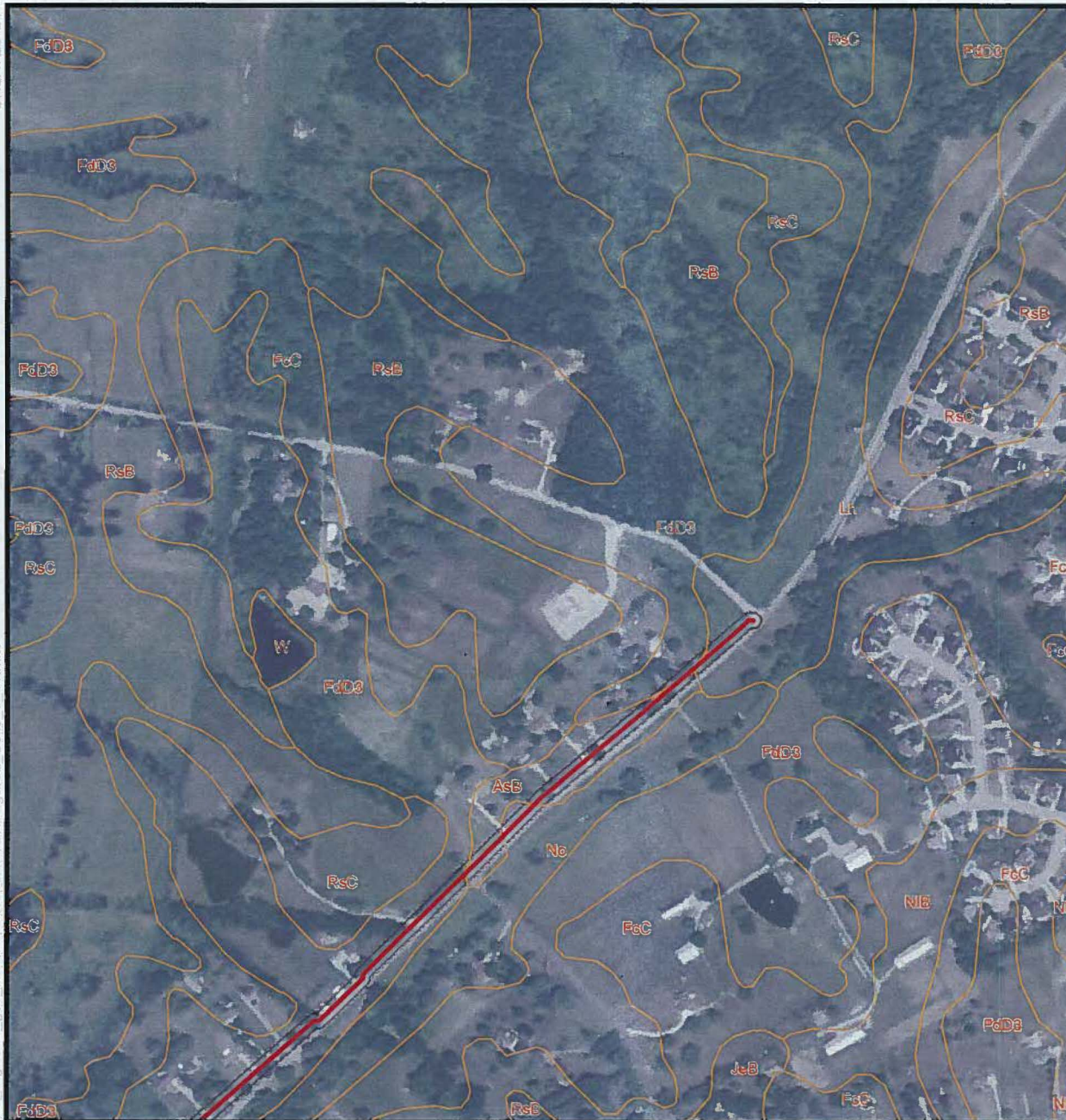
DATE: 4/25/2016



CONFIDENTIAL PROPRIETARY TRADE SECRET

CREATED BY:

Duke\duke_BigBone_gas_line\Mapa\Report\WRI\Figure2_Soils_8_11.mxd

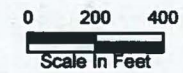


LEGEND:

- Centerline
- Mapped Soil Units
- Construction Corridor
- Study Area

BASE MAP SOURCE:
ESRI World Imagery 2014

SPATIAL DATA SOURCE:
Soils - USDA, NRCS 2013



Duke Energy Walton-Big Bone
Natural Gas Pipeline Project,
Boone County, Kentucky

FIGURE NUMBER 2K
SOILS MAP

PN: 673325

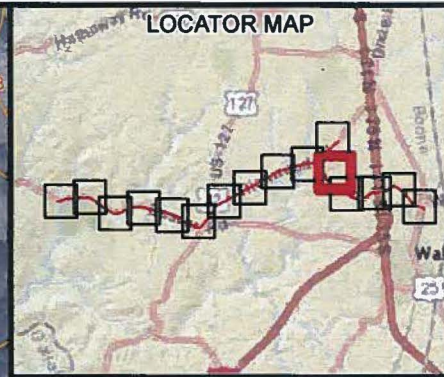
DATE: 4/25/2016



CONFIDENTIAL PROPRIETARY TRADE SECRET

CREATED BY:

D:\ke\duke_BigBone_gas_line\Maps\Report\WDR\Figure2_Soils_8_11.mxd



LEGEND:

- Centerline
- Mapped Soil Units
- Construction Corridor
- Study Area

BASE MAP SOURCE:
ESRI World Imagery 2014

SPATIAL DATA SOURCE:
Soils - USDA, NRCS 2013



Duke Energy Walton-Big Bone
Natural Gas Pipeline Project,
Boone County, Kentucky

FIGURE NUMBER 2L
SOILS MAP

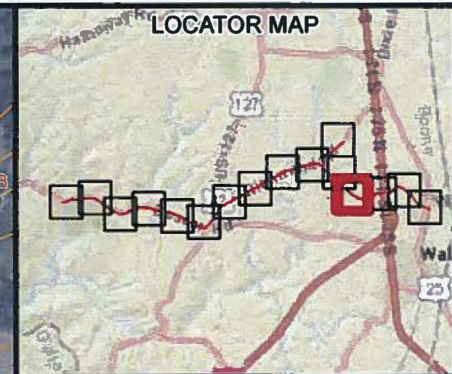
PN: 673325

DATE: 4/25/2016



CONFIDENTIAL PROPRIETARY TRADE SECRET

CREATED BY



LEGEND:

- Centerline
- Mapped Soil Units
- Construction Corridor
- Study Area

BASE MAP SOURCE:
 ESRI World Imagery 2014

SPATIAL DATA SOURCE:
 Soils - USDA, NRCS 2013



Duke Energy Walton-Big Bone
 Natural Gas Pipeline Project,
 Boone County, Kentucky

**FIGURE NUMBER 2M
 SOILS MAP**

PN: 673325

DATE: 4/25/2016

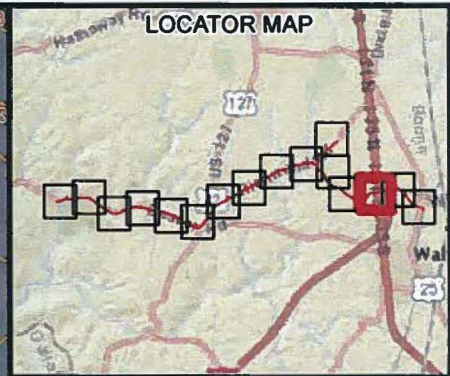


Duke\Duke_BigBone_gas_line\Maps\Report\WDR\Figure2_Soils_8_11.mxd





CONFIDENTIAL PROPRIETARY TRADE SECRET

CREATED BY

Duke\Bonne_BigBone_gas_line\Maps\Report\WDR\Figure2_Soils_8_11.mxd



LEGEND:

-  Centerline
-  Mapped Soil Units
-  Construction Corridor
-  Study Area

BASE MAP SOURCE:
ESRI World Imagery 2014

SPATIAL DATA SOURCE:
Soils - USDA, NRCS 2013



Duke Energy Walton-Big Bone
Natural Gas Pipeline Project,
Boone County, Kentucky

FIGURE NUMBER 2N
SOILS MAP

PN: 673325

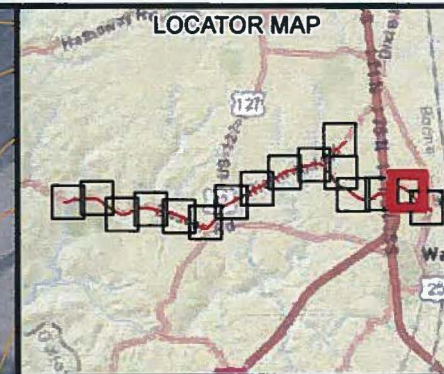
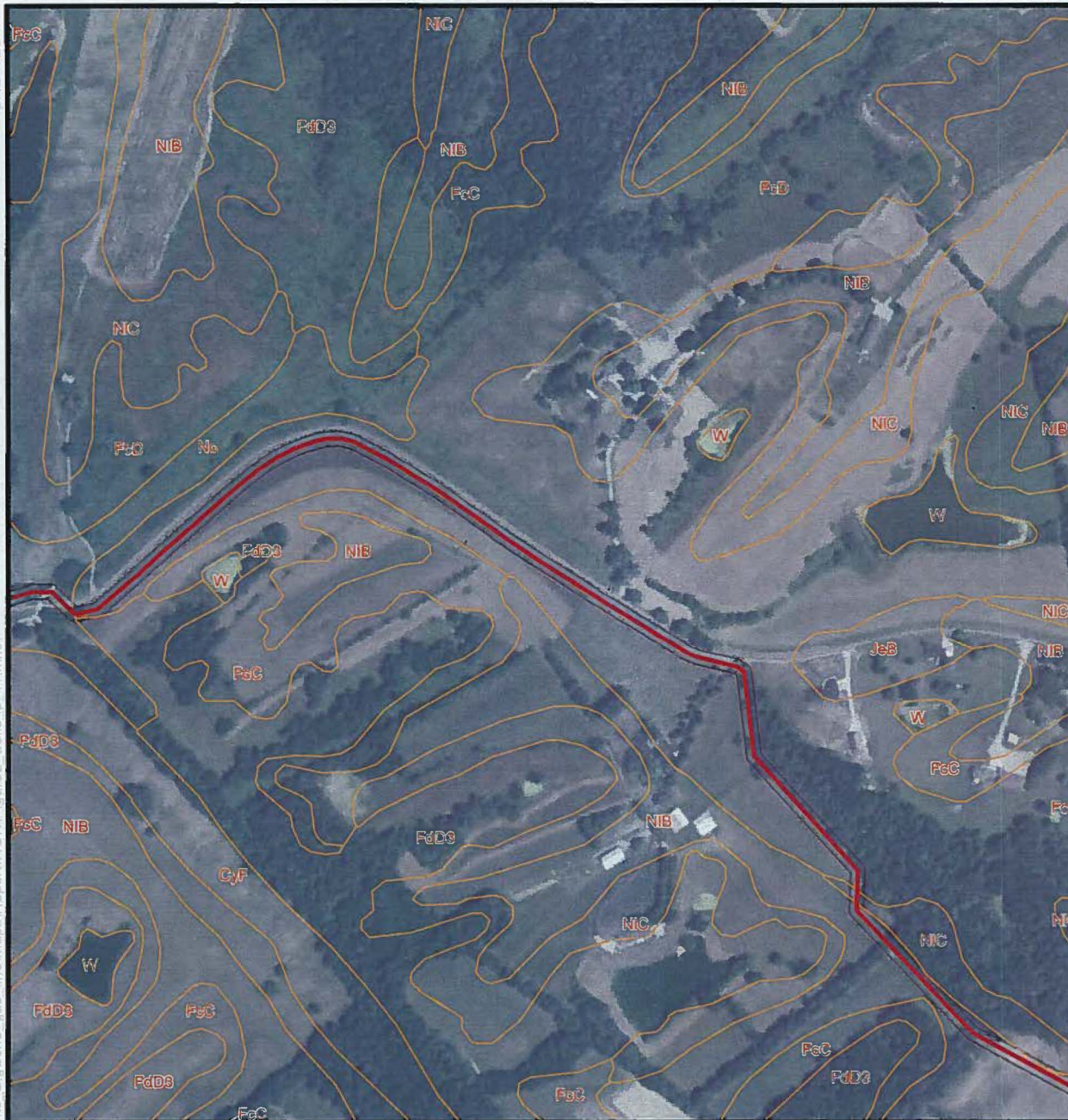
DATE: 4/25/2016



CONFIDENTIAL PROPRIETARY TRADE SECRET

CREATED BY

Duke\Bonne_BigBone_gas_line\Map\Report\WDR\Figure2_Soils_8_11.mxd



LEGEND:

- Centerline
- Mapped Soil Units
- Construction Corridor
- Study Area

BASE MAP SOURCE:
ESRI World Imagery 2014

SPATIAL DATA SOURCE:
Soils - USDA, NRCS 2013



Duke Energy Walton-Big Bone
Natural Gas Pipeline Project,
Boone County, Kentucky

FIGURE NUMBER 20
SOILS MAP

PN: 673325

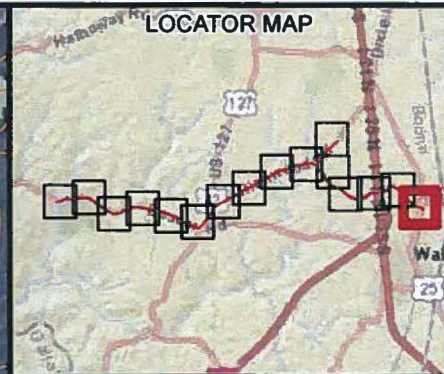
DATE: 4/25/2016







CONFIDENTIAL PROPRIETARY TRADE SECRET

CREATED BY

Duke\Duke_BigBone_gas_line\Maps\Reports\WDR\Figure2_Soils_8_11.mxd



LEGEND:

-  Centerline
-  Mapped Soil Units
-  Construction Corridor
-  Study Area

BASE MAP SOURCE:
ESRI World Imagery 2014

SPATIAL DATA SOURCE:
Soils - USDA, NRCS 2013



Duke Energy Walton-Big Bone
Natural Gas Pipeline Project,
Boone County, Kentucky

FIGURE NUMBER 2P
SOILS MAP

PN: 673325

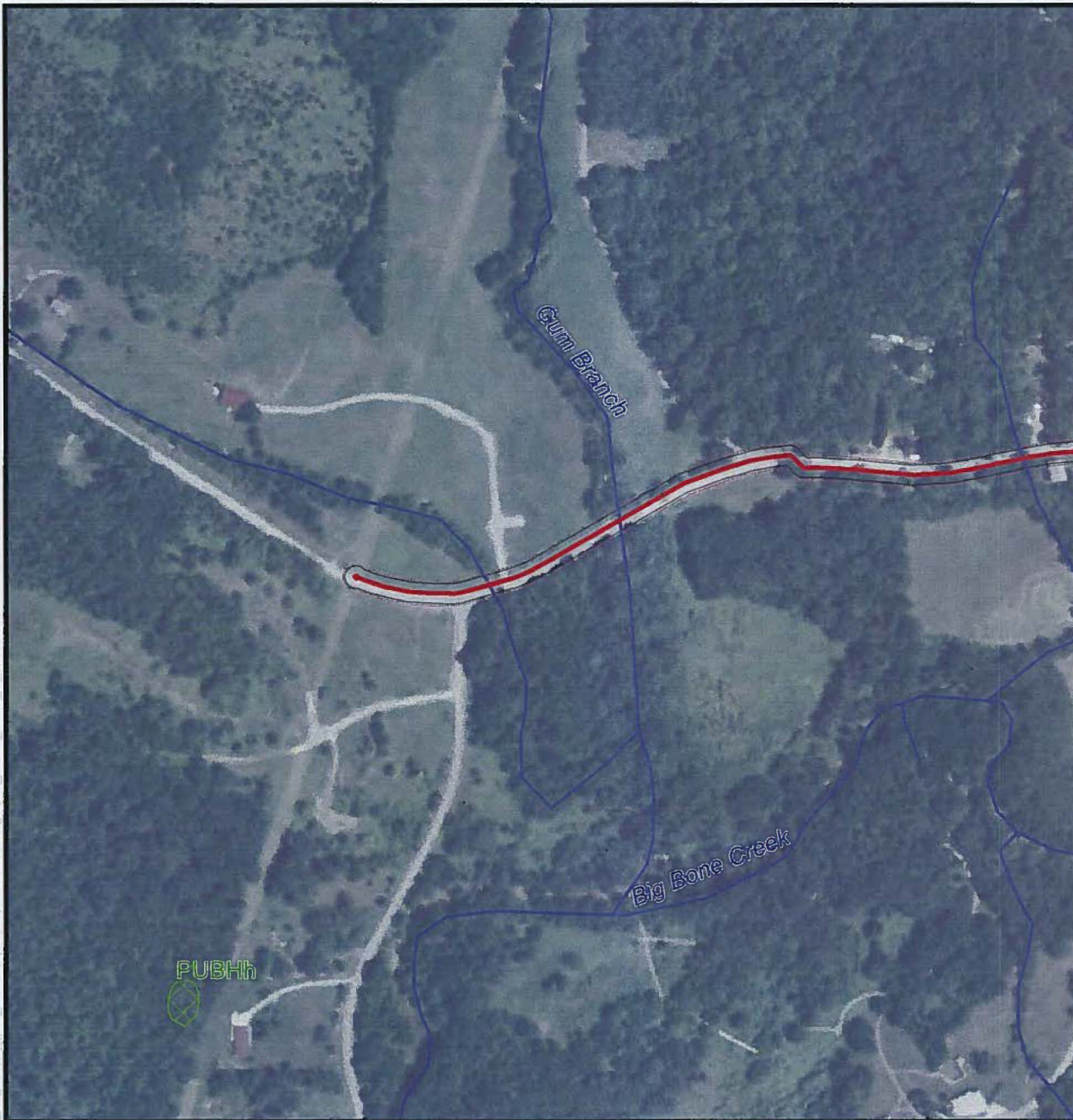
DATE: 4/25/2016



CONFIDENTIAL PROPRIETARY TRADE SECRET

CREATED BY

ke\Duke_BigBone_gas_line\Maps\Report\WDR\Figure3_NHD_NWI_8_11.mxd



LEGEND:

- Centerline
- Stream (NHD)
- Wetland (NWI)
- Construction Corridor
- Study Area



Note: The LOD will be restricted to a 30-foot width at stream and wetland crossings.

SPATIAL DATA SOURCE:
Stream - USGS, National Hydrography Dataset
Wetland- FWS, NWI Wetlands

BASE MAP SOURCE:
ESRI World Imagery 2014



Duke Energy Walton-Big Bone
Natural Gas Pipeline Project,
Boone County, Kentucky

FIGURE NUMBER 3A
NATIONAL WETLAND INVENTORY AND
NATIONAL HYDROGRAPHY DATASET

PN: 673325

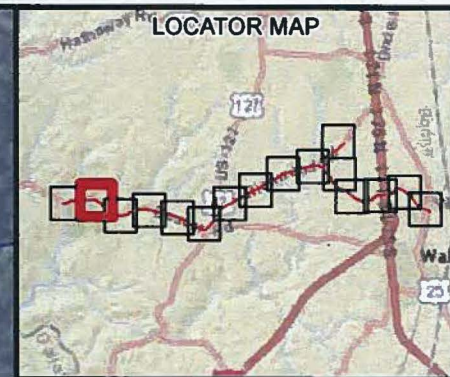
DATE: 4/25/2016



CONFIDENTIAL PROPRIETARY TRADE SECRET

CREATED BY

ke.Duke_BigBone_gas_line\\Maps\\Report\\WDR\\Figure3_NHD_NWI_8_11.mxd



LEGEND:

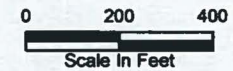
- Centerline
- Stream (NHD)
- ▨ Wetland (NWI)
- Construction Corridor
- Study Area



Note: The LOD will be restricted to a 30-foot width at stream and wetland crossings.

SPATIAL DATA SOURCE:
Stream - USGS, National Hydrography Dataset
Wetland- FWS, NWI Wetlands

BASE MAP SOURCE:
ESRI World Imagery 2014



Duke Energy Walton-Big Bone
Natural Gas Pipeline Project,
Boone County, Kentucky

FIGURE NUMBER 3B
NATIONAL WETLAND INVENTORY AND
NATIONAL HYDROGRAPHY DATASET

PN: 673325

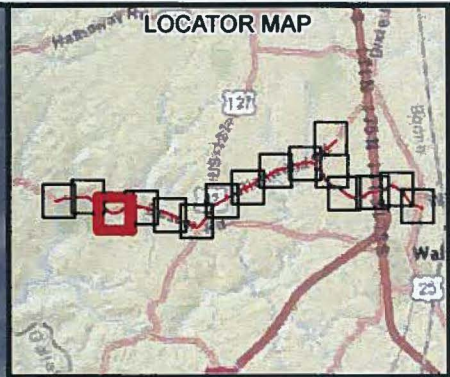
DATE: 4/25/2016






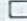

CONFIDENTIAL PROPRIETARY TRADE SECRET

CREATED BY:

ke\Duke_BigBone_gas_line\Maps\Report\WDR\Figure3_NHD_NWI_8_11.mxd



LEGEND:

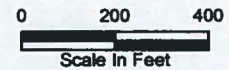
-  Centerline
-  Stream (NHD)
-  Wetland (NWI)
-  Construction Corridor
-  Study Area



Note: The LOD will be restricted to a 30-foot width at stream and wetland crossings.

SPATIAL DATA SOURCE:
Stream - USGS, National Hydrography Dataset
Wetland- FWS, NWI Wetlands

BASE MAP SOURCE:
ESRI World Imagery 2014



Duke Energy Walton-Big Bone
Natural Gas Pipeline Project,
Boone County, Kentucky

FIGURE NUMBER 3C
NATIONAL WETLAND INVENTORY AND
NATIONAL HYDROGRAPHY DATASET

PN: 673325

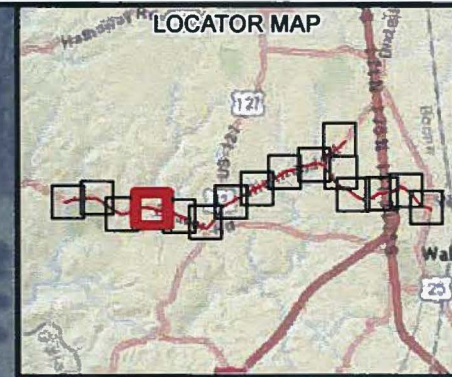
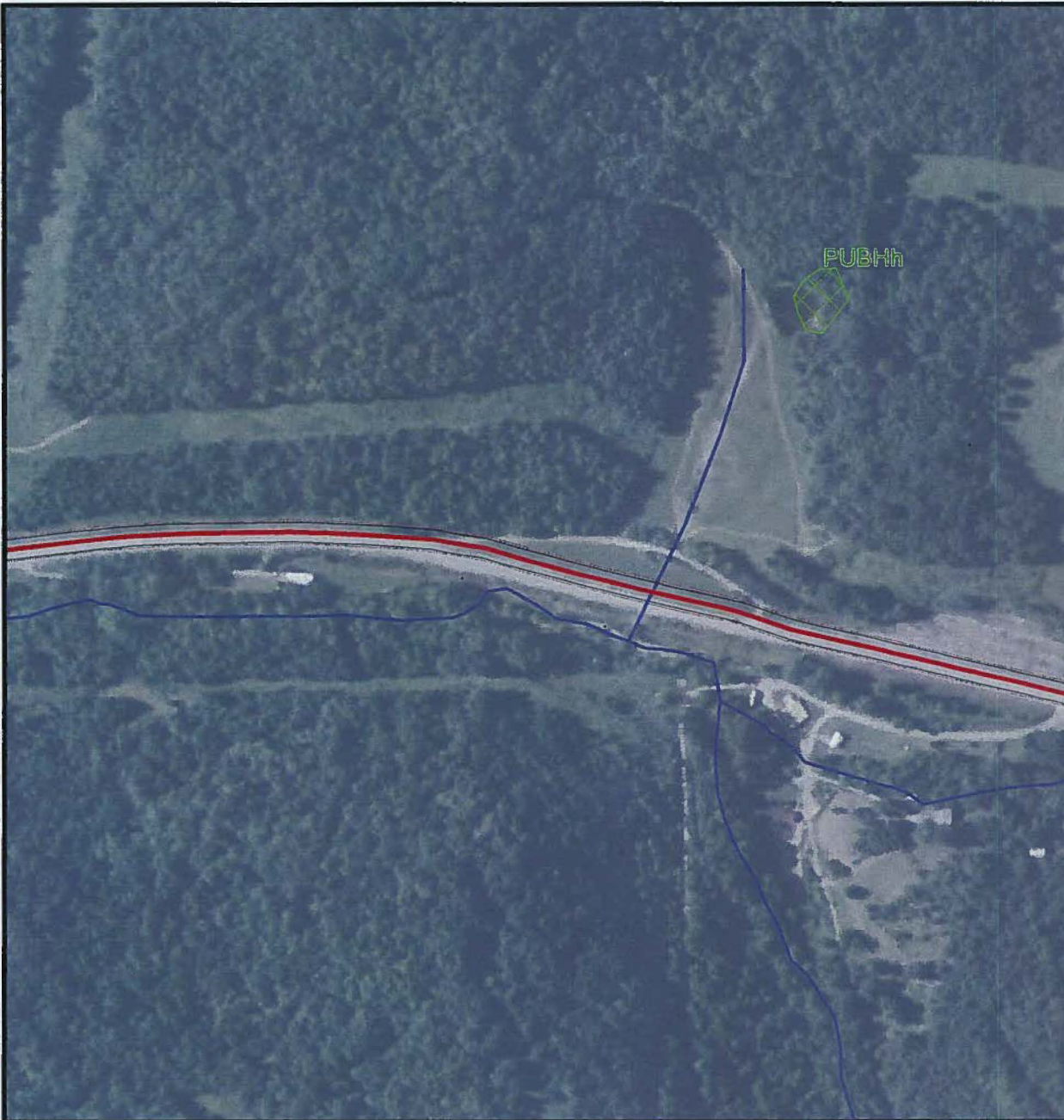
DATE: 4/25/2016








CONFIDENTIAL PROPRIETARY TRADE SECRET

CREATED BY

ke\Duke_BigBone_gas_line\Maps\Report\WDR\Figure3_NHD_NWI_8_11.mxd



LEGEND:

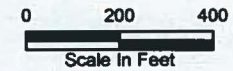
-  Centerline
-  Stream (NHD)
-  Wetland (NWI)
-  Construction Corridor
-  Study Area



Note: The LOD will be restricted to a 30-foot width at stream and wetland crossings.

SPATIAL DATA SOURCE:
Stream - USGS, National Hydrography Dataset
Wetland- FWS, NWI Wetlands

BASE MAP SOURCE:
ESRI World Imagery 2014



Duke Energy Walton-Big Bone
Natural Gas Pipeline Project,
Boone County, Kentucky

FIGURE NUMBER 3D
NATIONAL WETLAND INVENTORY AND
NATIONAL HYDROGRAPHY DATASET

PN: 673325

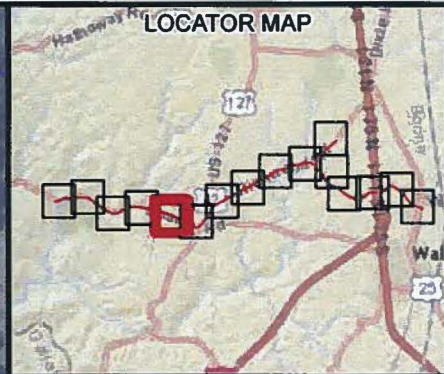
DATE: 4/25/2016



CONFIDENTIAL PROPRIETARY TRADE SECRET

CREATED BY

ke:\Duke-BigBorre_gas_line\Maps\Report\WDR\Figure3_NHD_NWI_8_11.mxd



LEGEND:

- Centerline
- Stream (NHD)
- Wetland (NWI)
- Construction Corridor
- Study Area

Note: The LOD will be restricted to a 30-foot width at stream and wetland crossings.

SPATIAL DATA SOURCE:
Stream - USGS, National Hydrography Dataset
Wetland- FWS, NWI Wetlands

BASE MAP SOURCE:
ESRI World Imagery 2014

0 200 400
Scale In Feet

DUKE ENERGY
Duke Energy Walton-Big Bone Natural Gas Pipeline Project, Boone County, Kentucky

**FIGURE NUMBER 3E
NATIONAL WETLAND INVENTORY AND
NATIONAL HYDROGRAPHY DATASET**

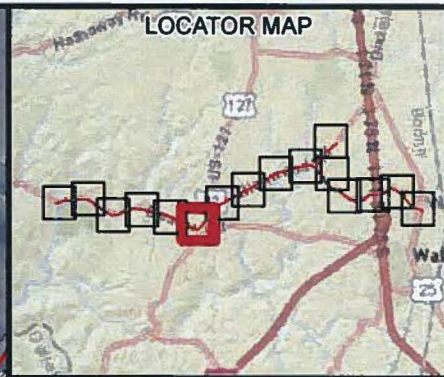
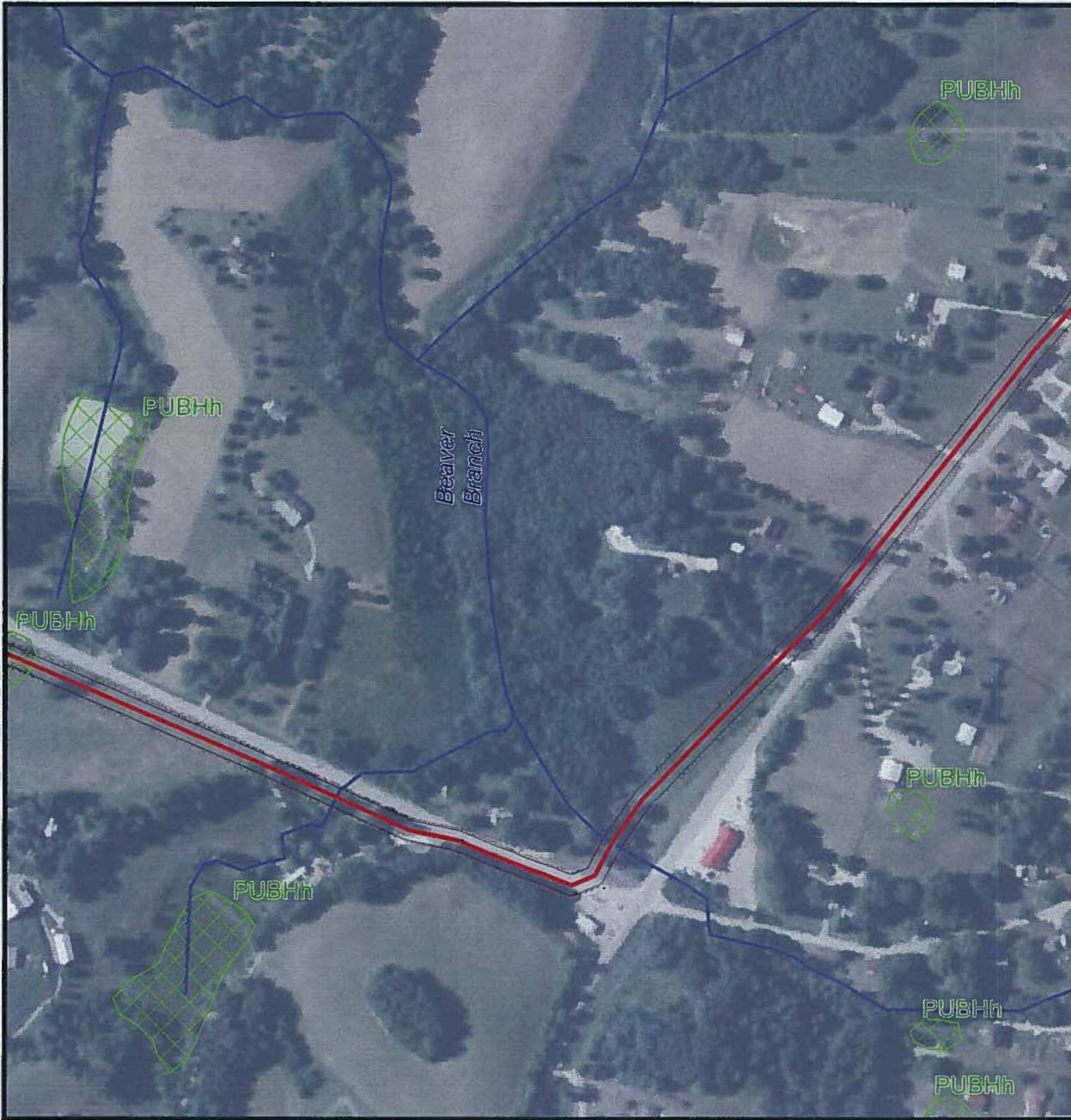
PN: 673325
DATE: 4/25/2016

ch2m






CONFIDENTIAL PROPRIETARY TRADE SECRET

CREATED BY:

ke:\Duke - BigBore_gas_line\Map\Report\WDR\Figure3_NHD_NWI_8_11.mxd



LEGEND:

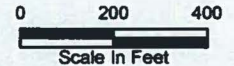
-  Centerline
-  Stream (NHD)
-  Wetland (NWI)
-  Construction Corridor
-  Study Area



Note: The LOD will be restricted to a 30-foot width at stream and wetland crossings.

SPATIAL DATA SOURCE:
Stream - USGS, National Hydrography Dataset
Wetland- FWS, NWI Wetlands

BASE MAP SOURCE:
ESRI World Imagery 2014



Duke Energy Walton-Big Bore
Natural Gas Pipeline Project,
Boone County, Kentucky

FIGURE NUMBER 3F
NATIONAL WETLAND INVENTORY AND
NATIONAL HYDROGRAPHY DATASET

PN: 673325

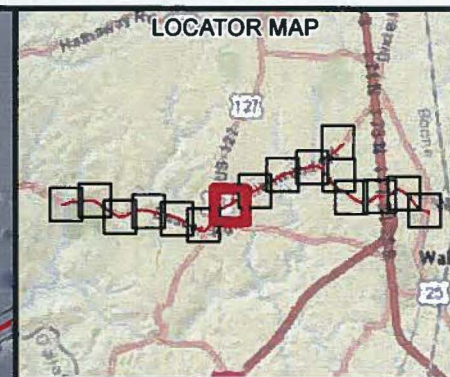
DATE: 4/25/2016



CONFIDENTIAL PROPRIETARY TRADE SECRET

CREATED BY

ke\Duke_BigBone_gas_line\Maps\Report\WDR\Figure3_NHD_NWI_8_11.mxd



LEGEND:

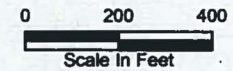
- Centerline
- Stream (NHD)
- ▨ Wetland (NWI)
- Construction Corridor
- Study Area



Note: The LOD will be restricted to a 30-foot width at stream and wetland crossings.

SPATIAL DATA SOURCE:
Stream - USGS, National Hydrography Dataset
Wetland- FWS, NWI Wetlands

BASE MAP SOURCE:
ESRI World Imagery 2014



Duke Energy Walton-Big Bone
Natural Gas Pipeline Project,
Boone County, Kentucky

FIGURE NUMBER 3G
NATIONAL WETLAND INVENTORY AND
NATIONAL HYDROGRAPHY DATASET

PN: 673325

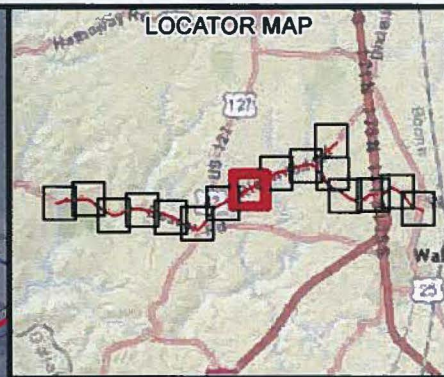
DATE: 4/25/2016



CONFIDENTIAL PROPRIETARY TRADE SECRET

CREATED BY

ke\Duke_BigBone_gas_line\Maps\Report\WDR\Figure3_NHD_NWI_8_11.mxd



- LEGEND:**
- Centerline
 - Stream (NHD)
 - Wetland (NWI)
 - Construction Corridor
 - Study Area



Note: The LOD will be restricted to a 30-foot width at stream and wetland crossings.

SPATIAL DATA SOURCE:
Stream - USGS, National Hydrography Dataset
Wetland- FWS, NWI Wetlands

BASE MAP SOURCE:
ESRI World Imagery 2014



Duke Energy Walton-Big Bone
Natural Gas Pipeline Project,
Boone County, Kentucky

FIGURE NUMBER 3H
NATIONAL WETLAND INVENTORY AND
NATIONAL HYDROGRAPHY DATASET

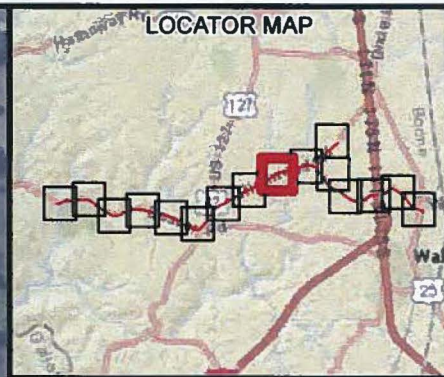
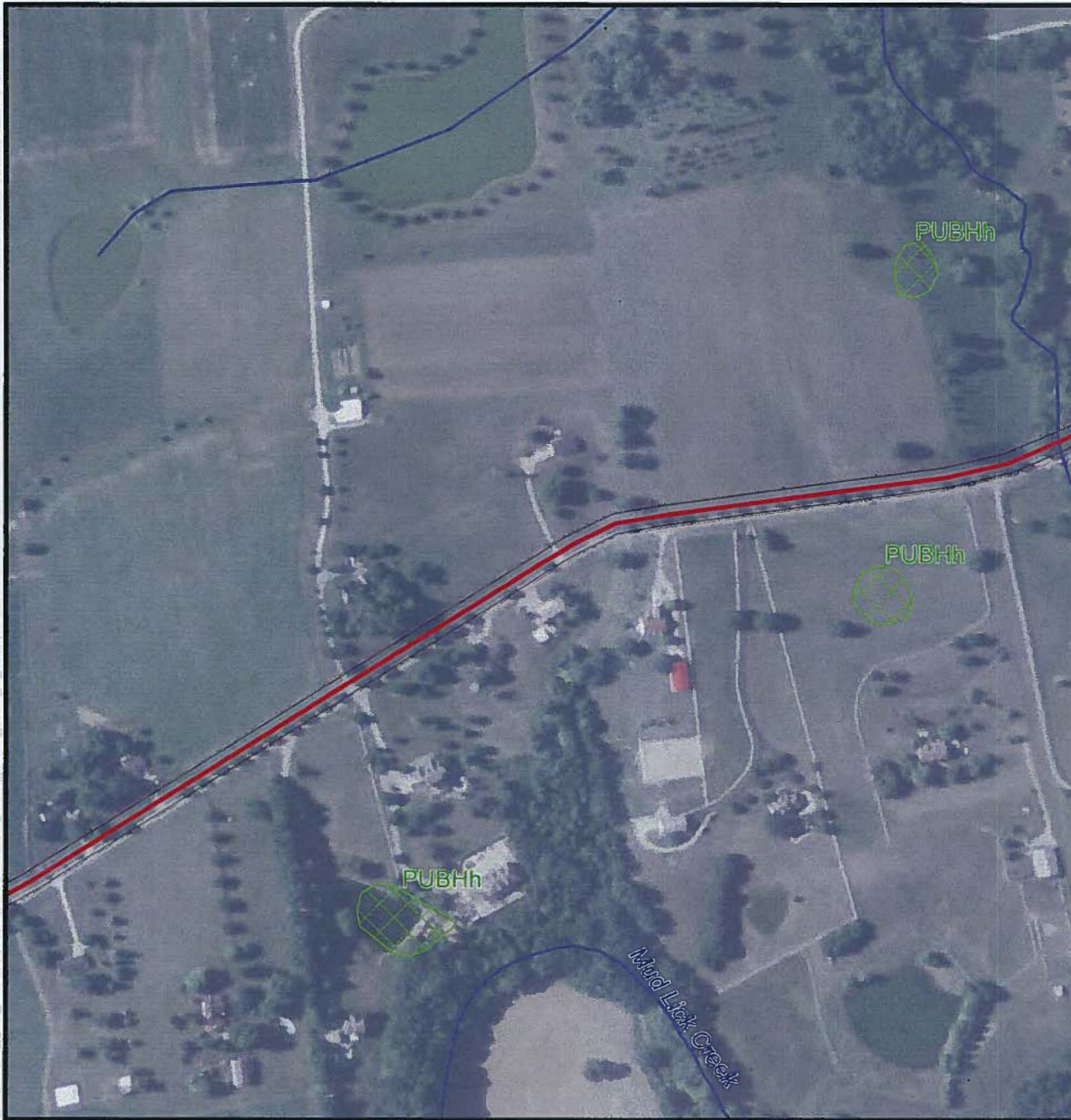
PN: 673325
DATE: 4/25/2016



CONFIDENTIAL PROPRIETARY TRADE SECRET

CREATED BY

ke\Duke_BigBone_gas_line\Mapst\Report\WDR\Figure3_NHD_NWI_8_11.mxd



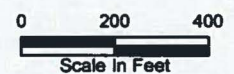
- LEGEND:**
- Centerline
 - Stream (NHD)
 - Wetland (NWI)
 - Construction Corridor
 - Study Area



Note: The LOD will be restricted to a 30-foot width at stream and wetland crossings.

SPATIAL DATA SOURCE:
Stream - USGS, National Hydrography Dataset
Wetland- FWS, NWI Wetlands

BASE MAP SOURCE:
ESRI World Imagery 2014



Duke Energy Walton-Big Bone
Natural Gas Pipeline Project,
Boone County, Kentucky

FIGURE NUMBER 3I
NATIONAL WETLAND INVENTORY AND
NATIONAL HYDROGRAPHY DATASET

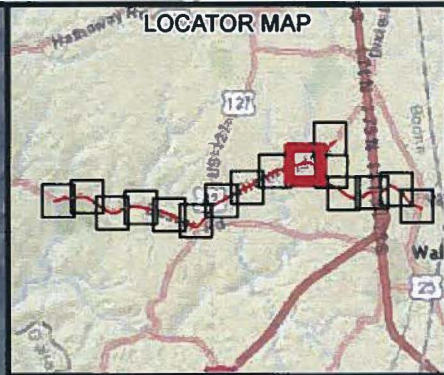
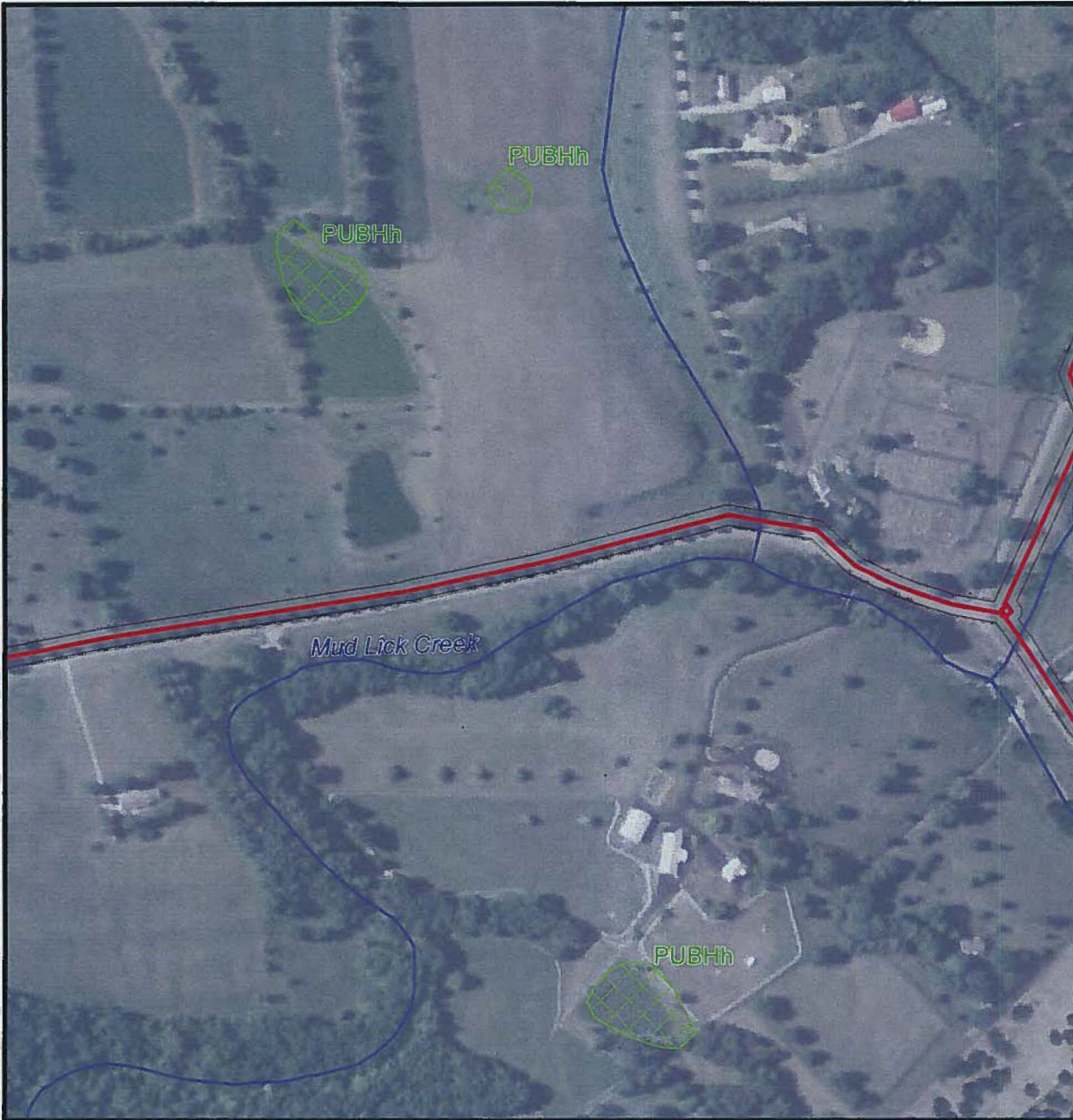
PN: 673325
DATE: 4/25/2016



CONFIDENTIAL PROPRIETARY TRADE SECRET

CREATED BY

ke\Duke_BigBone_gas_line\Maps\Report\WDR\Figure3_NHD_NWI_8_11.mxd



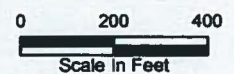
- LEGEND:**
- Centerline
 - Stream (NHD)
 - ▨ Wetland (NWI)
 - Construction Corridor
 - Study Area



Note: The LOD will be restricted to a 30-foot width at stream and wetland crossings.

SPATIAL DATA SOURCE:
 Stream - USGS, National Hydrography Dataset
 Wetland- FWS, NWI Wetlands

BASE MAP SOURCE:
 ESRI World Imagery 2014



Duke Energy Walton-Big Bone
 Natural Gas Pipeline Project,
 Boone County, Kentucky

FIGURE NUMBER 3J
NATIONAL WETLAND INVENTORY AND
NATIONAL HYDROGRAPHY DATASET

PN: 673325

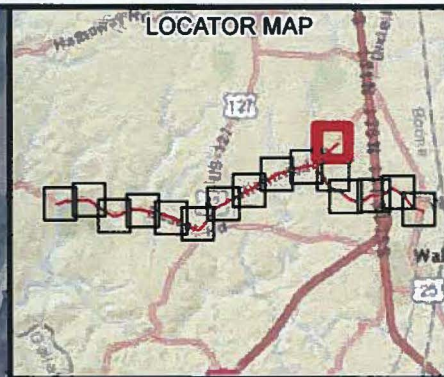
DATE: 4/25/2016



CONFIDENTIAL PROPRIETARY TRADE SECRET

CREATED BY

ke\Duke_BigBone_das_line\Maps\Report\WDR\Fig\Fig3_NHD_NWI_8_11.mxd



LEGEND:

- Centerline
- Stream (NHD)
- ▨ Wetland (NWI)
- Construction Corridor
- Study Area



Note: The LOD will be restricted to a 30-foot width at stream and wetland crossings.

SPATIAL DATA SOURCE:
 Stream - USGS, National Hydrography Dataset
 Wetland- FWS, NWI Wetlands

BASE MAP SOURCE:
 ESRI World Imagery 2014



Duke Energy Walton-Big Bone
 Natural Gas Pipeline Project,
 Boone County, Kentucky

FIGURE NUMBER 3K
 NATIONAL WETLAND INVENTORY AND
 NATIONAL HYDROGRAPHY DATASET

PN: 673325

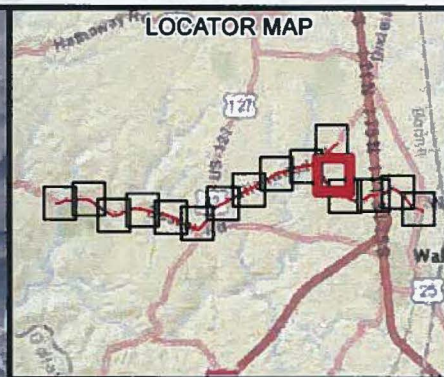
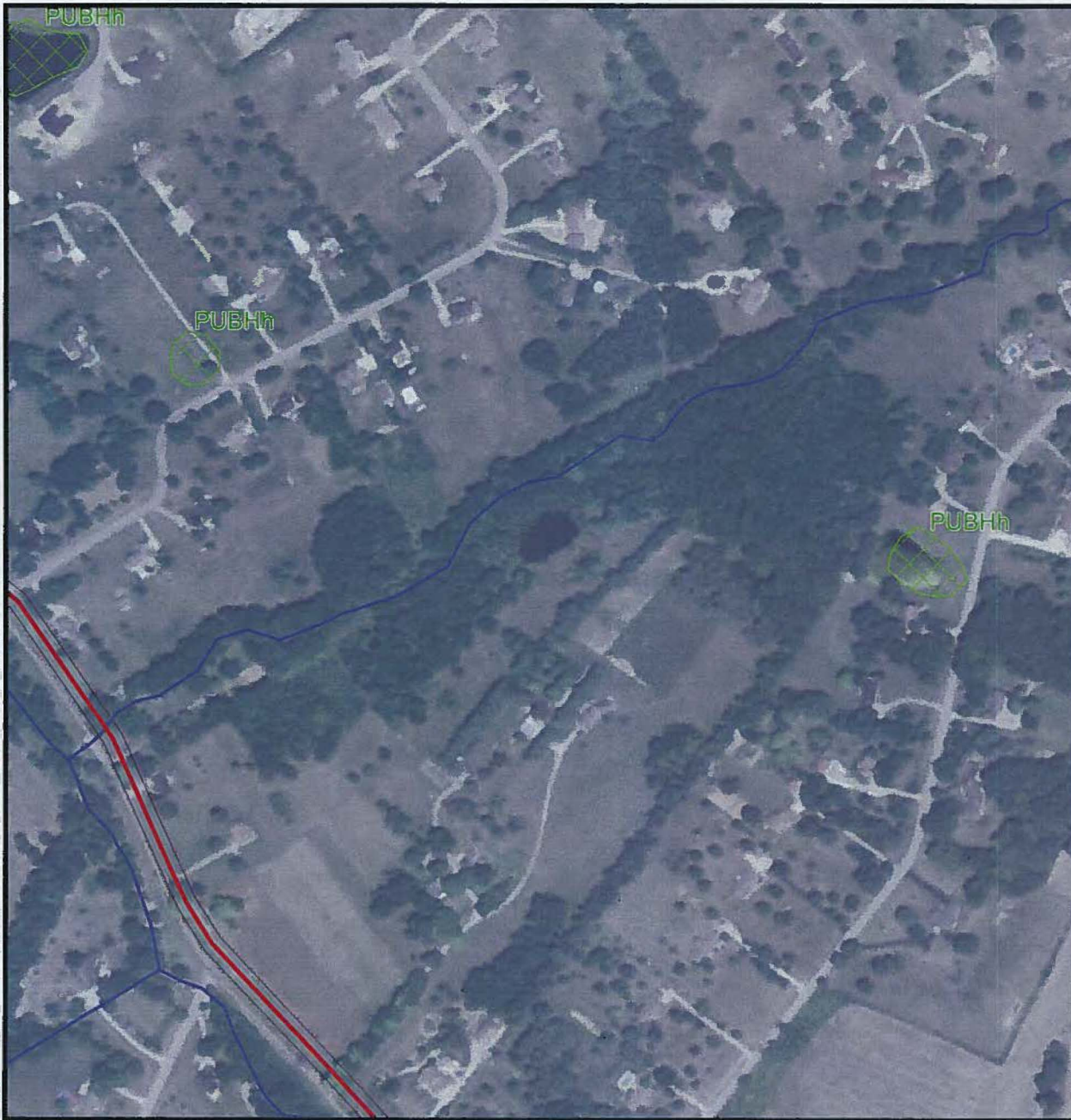
DATE: 4/25/2016



CONFIDENTIAL PROPRIETARY TRADE SECRET

CREATED BY

ke\duke\BigBone_gas_line\Maps\Report\WOR\Figure3_NHD_NWI_8_11.mxd



LEGEND:

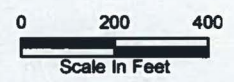
- Centerline
- Stream (NHD)
- Wetland (NWI)
- Construction Corridor
- Study Area



Note: The LOD will be restricted to a 30-foot width at stream and wetland crossings.

SPATIAL DATA SOURCE:
 Stream - USGS, National Hydrography Dataset
 Wetland- FWS, NWI Wetlands

BASE MAP SOURCE:
 ESRI World Imagery 2014



Duke Energy Walton-Big Bone
 Natural Gas Pipeline Project,
 Boone County, Kentucky

FIGURE NUMBER 3L
 NATIONAL WETLAND INVENTORY AND
 NATIONAL HYDROGRAPHY DATASET

PN: 673325

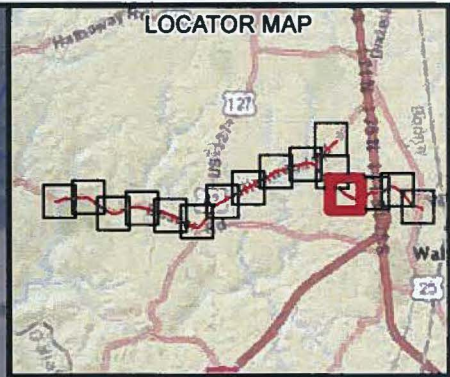
DATE: 4/25/2016



CONFIDENTIAL PROPRIETARY TRADE SECRET

CREATED BY

ke:\Duke_BigBone_gas_line\MapstReport\WDR\Figures3_NHD_NWI\8_11.mxd



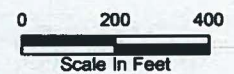
- LEGEND:**
- Centerline
 - Stream (NHD)
 - Wetland (NWI)
 - Construction Corridor
 - Study Area



Note: The LOD will be restricted to a 30-foot width at stream and wetland crossings.

SPATIAL DATA SOURCE:
Stream - USGS, National Hydrography Dataset
Wetland- FWS, NWI Wetlands

BASE MAP SOURCE:
ESRI World Imagery 2014



Duke Energy Walton-Big Bone
Natural Gas Pipeline Project,
Boone County, Kentucky

**FIGURE NUMBER 3M
NATIONAL WETLAND INVENTORY AND
NATIONAL HYDROGRAPHY DATASET**

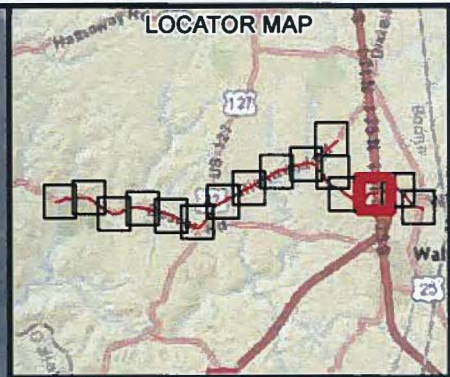
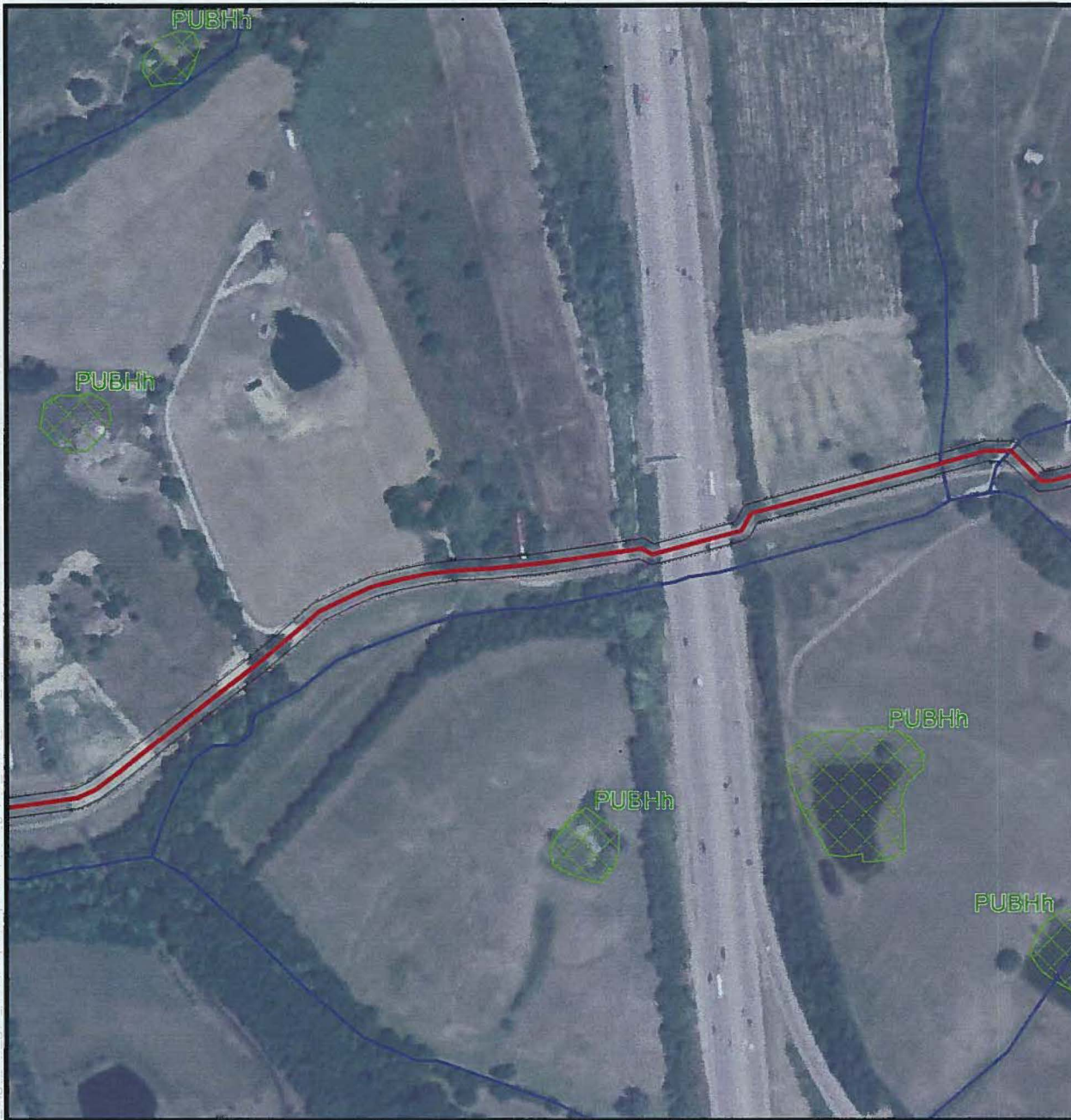
PN: 673325
DATE: 4/25/2016



CONFIDENTIAL PROPRIETARY TRADE SECRET

CREATED BY:

ke\Duke_BigBone_gas_line\Maps\Report\WDR\Figure3_NHD_NWI_8_11.mxd



LEGEND:

- Centerline
- Stream (NHD)
- Wetland (NWI)
- Construction Corridor
- Study Area



Note: The LOD will be restricted to a 30-foot width at stream and wetland crossings.

SPATIAL DATA SOURCE:
Stream - USGS, National Hydrography Dataset
Wetland- FWS, NWI Wetlands

BASE MAP SOURCE:
ESRI World Imagery 2014



Duke Energy Walton-Big Bone
Natural Gas Pipeline Project,
Boone County, Kentucky

FIGURE NUMBER 3N
NATIONAL WETLAND INVENTORY AND
NATIONAL HYDROGRAPHY DATASET

PN: 673325

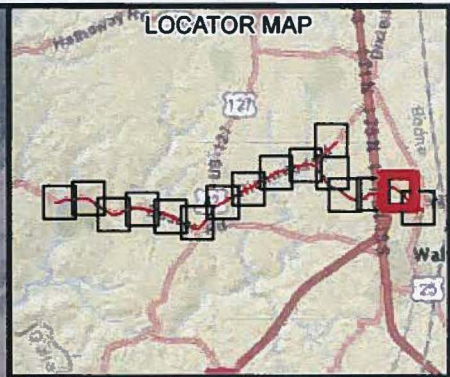
DATE: 4/25/2016



CONFIDENTIAL PROPRIETARY TRADE SECRET

CREATED BY

ke\Duke_BigBone_gas_line\Maps\Report\WDR\Figure3_NHD_NWI_8_11.mxd



LEGEND:

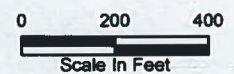
- Centerline
- Stream (NHD)
- Wetland (NWI)
- Construction Corridor
- Study Area

N

Note: The LOD will be restricted to a 30-foot width at stream and wetland crossings.

SPATIAL DATA SOURCE:
Stream - USGS, National Hydrography Dataset
Wetland- FWS, NWI Wetlands

BASE MAP SOURCE:
ESRI World Imagery 2014



	Duke Energy Walton-Big Bone Natural Gas Pipeline Project, Boone County, Kentucky
--	--

**FIGURE NUMBER 30
NATIONAL WETLAND INVENTORY AND
NATIONAL HYDROGRAPHY DATASET**

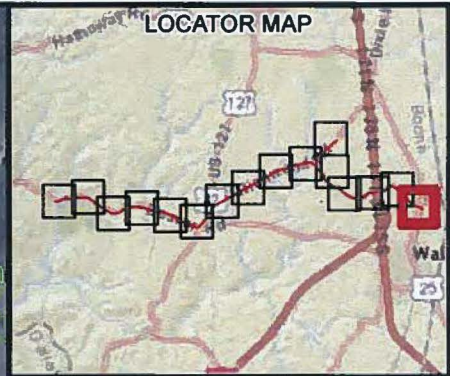
PN: 673325
DATE: 4/25/2016



CONFIDENTIAL PROPRIETARY TRADE SECRET

CREATED BY

ke\Duke_BigBone_gas_line\Maps\Report\WDR\Figure3_NHD_NWI_8_11.mxd



LEGEND:

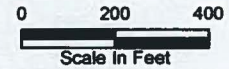
- Centerline
- Stream (NHD)
- Wetland (NWI)
- Construction Corridor
- Study Area



Note: The LOD will be restricted to a 30-foot width at stream and wetland crossings.

SPATIAL DATA SOURCE:
Stream - USGS, National Hydrography Dataset
Wetland- FWS, NWI Wetlands

BASE MAP SOURCE:
ESRI World Imagery 2014



Duke Energy Walton-Big Bone
Natural Gas Pipeline Project,
Boone County, Kentucky

FIGURE NUMBER 3P
NATIONAL WETLAND INVENTORY AND
NATIONAL HYDROGRAPHY DATASET

PN: 673325

DATE: 4/25/2016



CONFIDENTIAL PROPRIETARY TRADE SECRET

CREATED BY

31gBone_04s_linea\Maps\Report\WDP\Figure4_Delineated_Features_Review_8_11.mxd



N

LEGEND:

- Centerline
- Construction Corridor
- Study Area
- Stream (GAI Delineated)
- Stream (CH Delineated)
- Pond (CH Delineated)
- Wetland (CH Delineated)
- PEM
- PFO
- PSS

Note: The LOD will be restricted to a 30-foot width at stream and wetland crossings.

BASE MAP SOURCE:
 ESRI World Imagery 2014

0 100 200

 Scale in Feet

	<i>Duke Energy Walton-Big Bone Natural Gas Pipeline Project, Boone County, Kentucky</i>
--	---

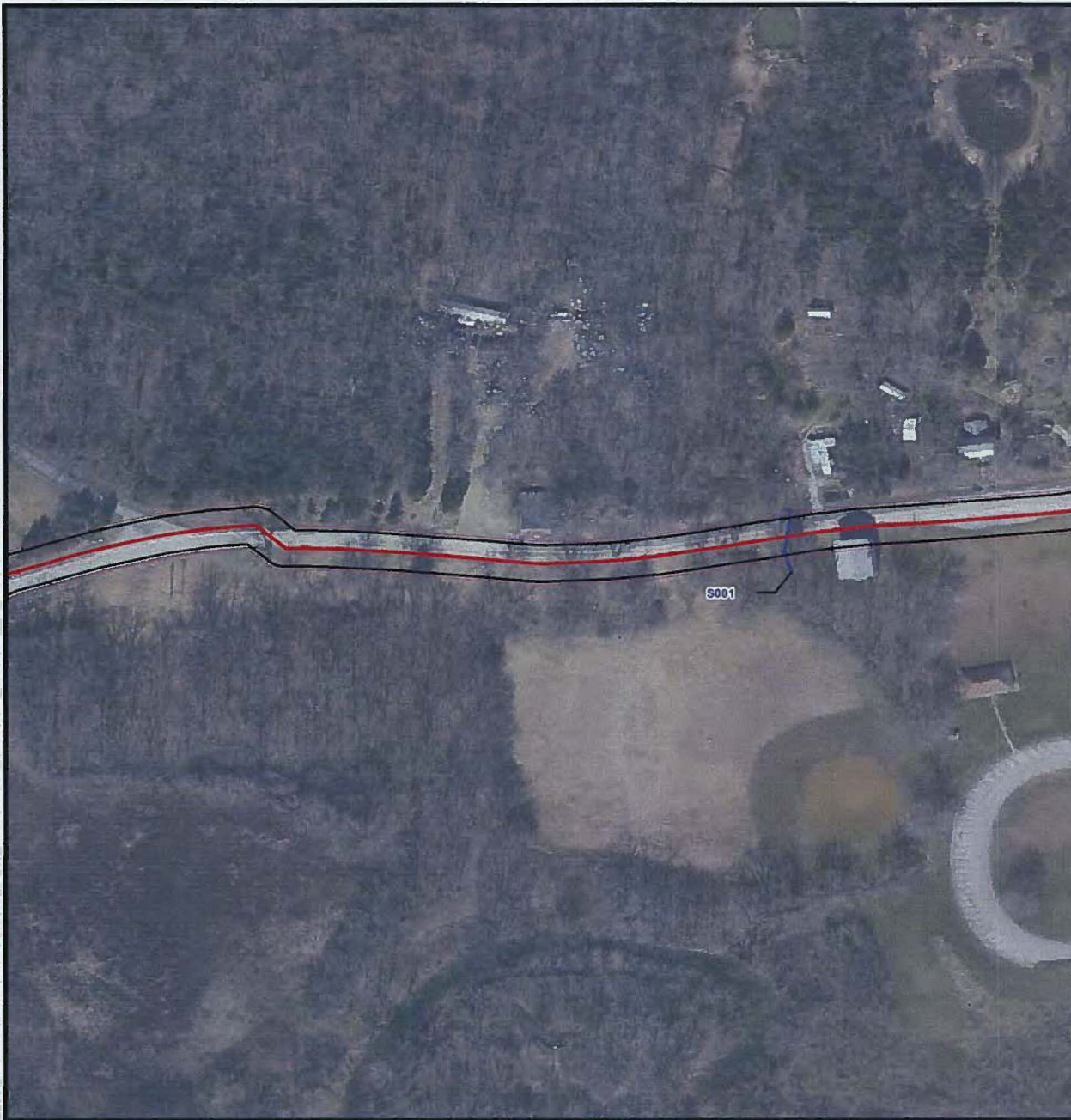
**FIGURE 4A
 WETLAND AND WATERBODIES
 DELINEATION MAP**

PN: 673325	
DATE: 4/25/2016	

CONFIDENTIAL PROPRIETARY TRADE SECRET

CREATED BY

3fgBoone.dwg: InaWmaps\Report\WDR\Figure4_Delineated_Features_Review_8_11.mxd



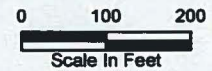
LEGEND:

- Centerline
- ▭ Construction Corridor
- ▭ Study Area
- Stream (GAI Delineated)
- Stream (CH Delineated)
- Pond (CH Delineated)
- Wetland (CH Delineated)
- ▭ PEM
- ▭ PFO
- ▭ PSS



Note: The LOD will be restricted to a 30-foot width at stream and wetland crossings.

BASE MAP SOURCE:
ESRI World Imagery 2014



Duke Energy Walton-Big Bone
Natural Gas Pipeline Project,
Boone County, Kentucky

**FIGURE 4B
WETLAND AND WATERBODIES
DELINEATION MAP**

PN: 673325

DATE: 4/25/2016



CONFIDENTIAL PROPRIETARY TRADE SECRET

CREATED BY

31gBone.gps_lineMaps\Report\WDR\Figure4_Delineated_Features_Review_8_11.mxd



LEGEND:

- Centerline
- Construction Corridor
- Study Area
- Stream (GAI Delineated)
- Stream (CH Delineated)
- Pond (CH Delineated)
- Wetland (CH Delineated)
- PEM
- PFO
- PSS



Note: The LOD will be restricted to a 30-foot width at stream and wetland crossings.

BASE MAP SOURCE:
 ESRI World Imagery 2014



Duke Energy Walton-Big Bone
 Natural Gas Pipeline Project,
 Boone County, Kentucky

**FIGURE 4C
 WETLAND AND WATERBODIES
 DELINEATION MAP**

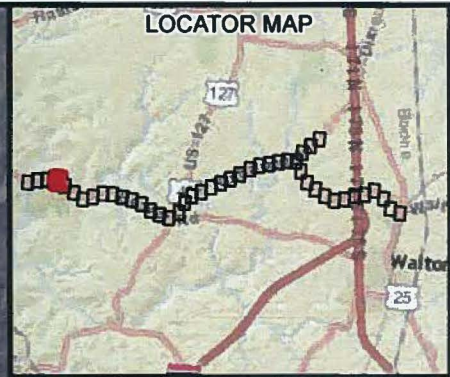
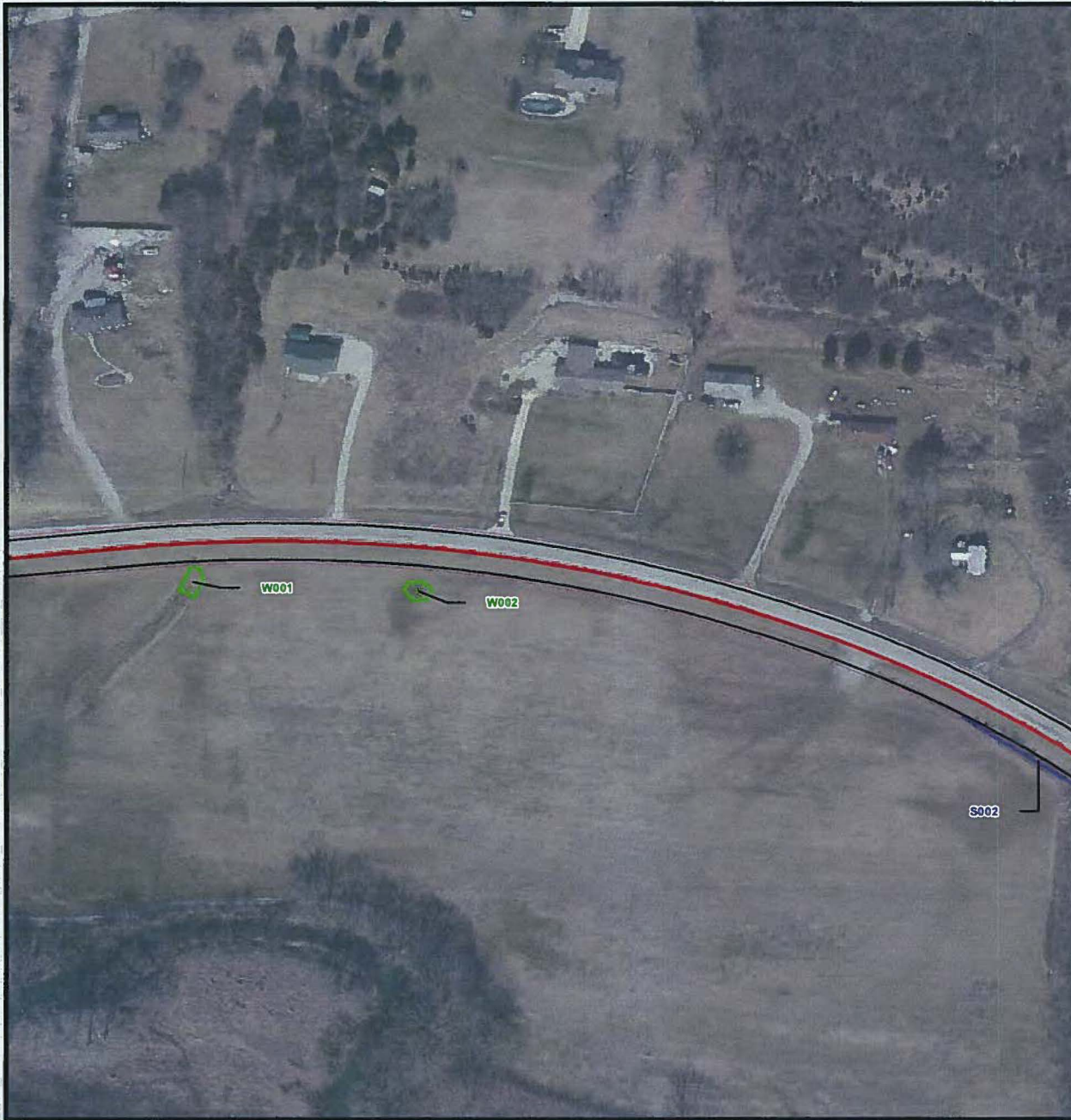
PN: 673325
 DATE: 4/25/2016



CONFIDENTIAL PROPRIETARY TRADE SECRET

CREATED BY

31qBone.dwg: line\maps\Report\WDR\Figure4_Delineated_Features_Review_8_11.mxd



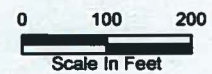
LEGEND:

- Centerline
- Construction Corridor
- Study Area
- Stream (GAI Delineated)
- Stream (CH Delineated)
- Pond (CH Delineated)
- Wetland (CH Delineated)
- PEM
- PFO
- PSS



Note: The LOD will be restricted to a 30-foot width at stream and wetland crossings.

BASE MAP SOURCE:
ESRI World Imagery 2014



Duke Energy Walton-Big Bone
Natural Gas Pipeline Project,
Boone County, Kentucky

**FIGURE 4D
WETLAND AND WATERBODIES
DELINEATION MAP**

PN: 673325

DATE: 4/25/2016



CONFIDENTIAL PROPRIETARY TRADE SECRET

CREATED BY:

3lgBoone.das_lineMapsReport\WDR\Figure4_Delineated_Features_Review_B_11.mxd

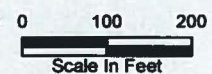


LEGEND:

- Centerline
- Construction Corridor
- Study Area
- Stream (GAI Delineated)
- Stream (CH Delineated)
- Pond (CH Delineated)
- Wetland (CH Delineated)
- PEM
- PFO
- PSS

Note: The LOD will be restricted to a 30-foot width at stream and wetland crossings.

BASE MAP SOURCE:
 ESRI World Imagery 2014



Duke Energy Walton-Big Bone
 Natural Gas Pipeline Project,
 Boone County, Kentucky

**FIGURE 4E
 WETLAND AND WATERBODIES
 DELINEATION MAP**

PN: 673325

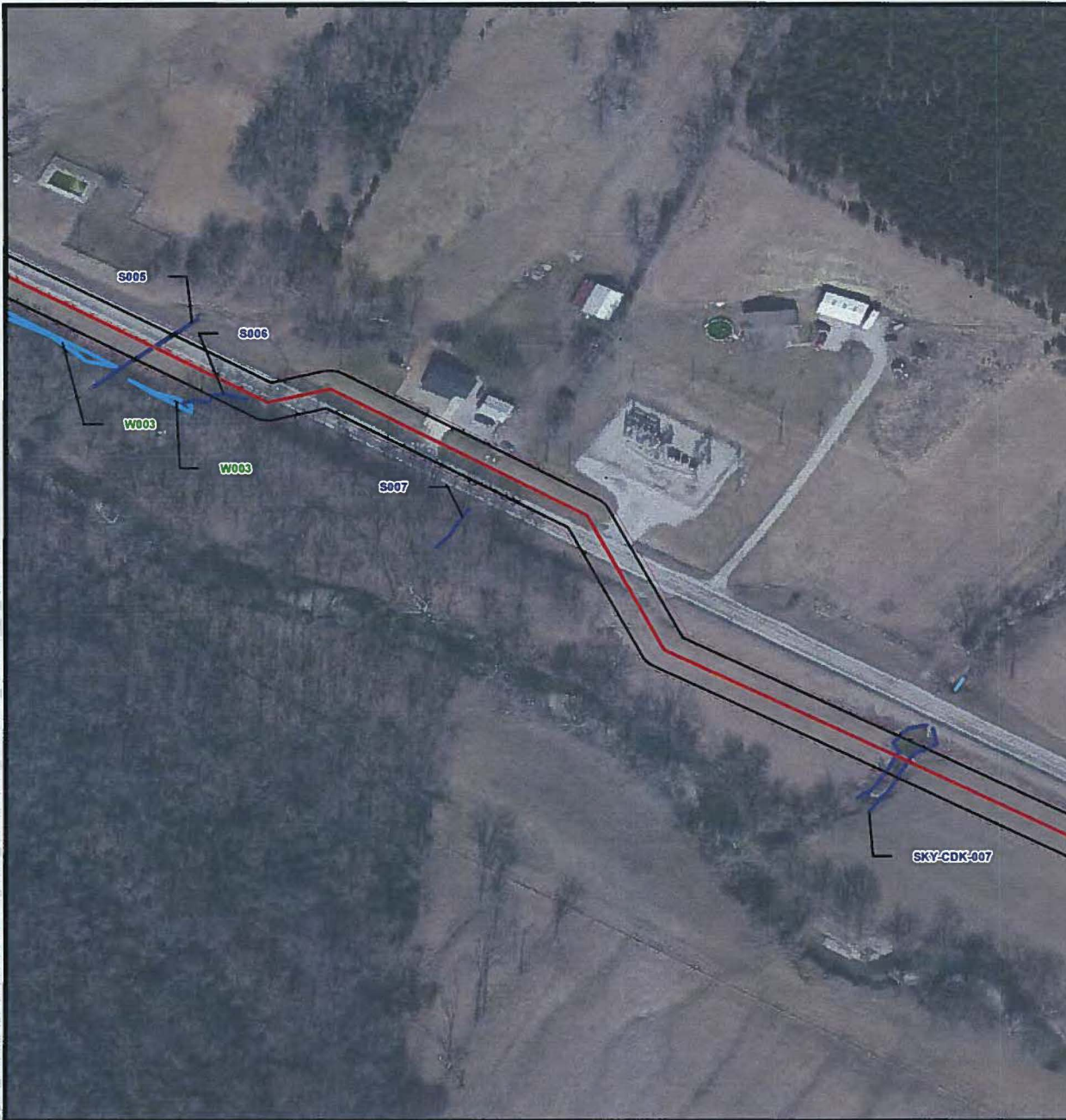
DATE: 4/25/2016



CONFIDENTIAL PROPRIETARY TRADE SECRET

CREATED BY

3lgBone_gas_lineMapstReportWDR\Figure4_Delineated_Features_Review_8_11.mxd



LEGEND:

-  Centerline
-  Construction Corridor
-  Study Area
-  Stream (GAI Delineated)
-  Stream (CH Delineated)
-  Pond (CH Delineated)
-  Wetland (CH Delineated)
-  PEM
-  PFO
-  PSS

Note: The LOD will be restricted to a 30-foot width at stream and wetland crossings.

BASE MAP SOURCE:
 ESRI World Imagery 2014



Duke Energy Walton-Big Bone
 Natural Gas Pipeline Project,
 Boone County, Kentucky

**FIGURE 4F
 WETLAND AND WATERBODIES
 DELINEATION MAP**

PN: 673325

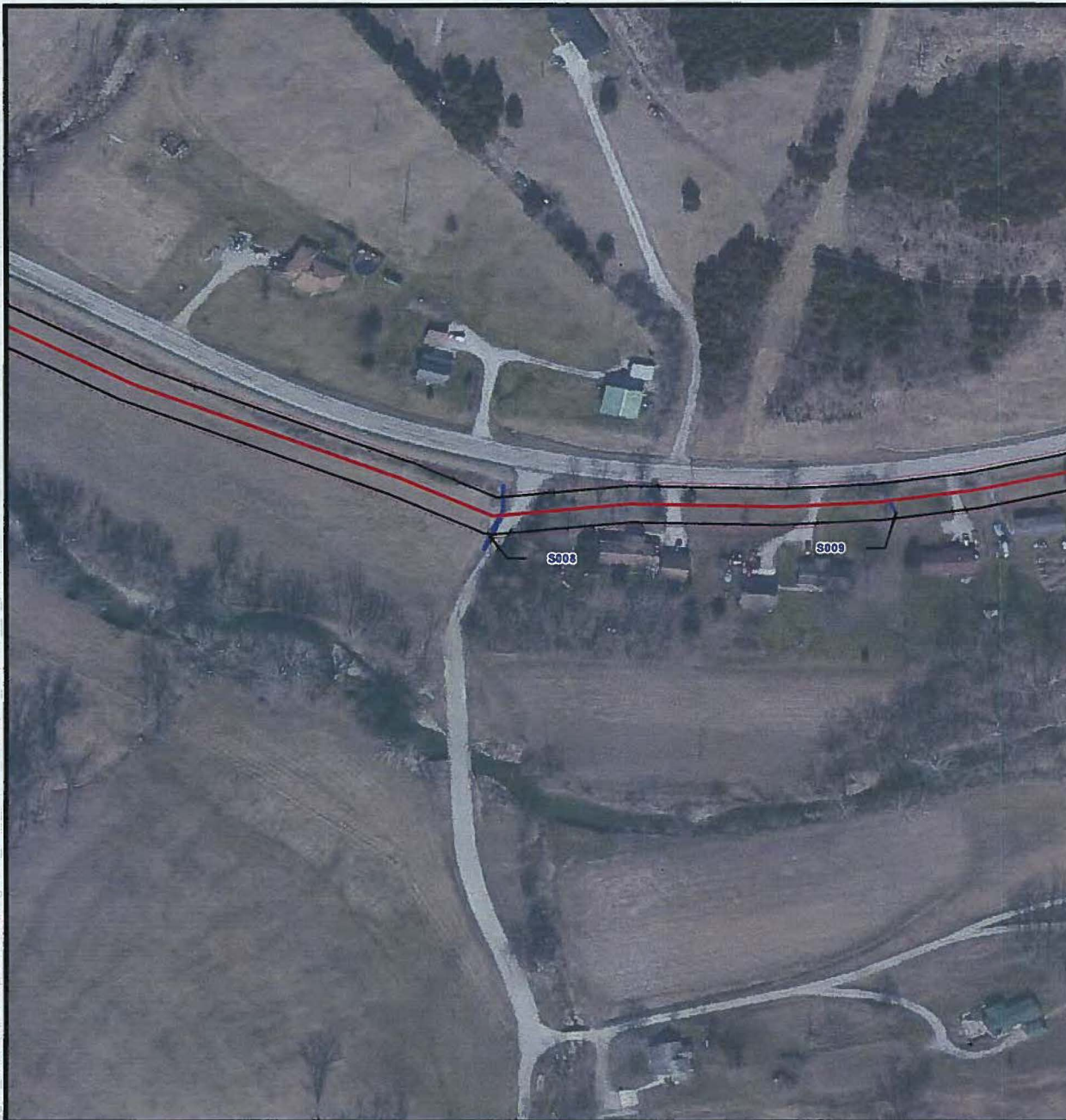
DATE: 4/25/2016



CONFIDENTIAL PROPRIETARY TRADE SECRET

CREATED BY:

3igBone.gas_line\maps\Report\WDR\Figure4_Delineated_Features_Review_8_11.mxd

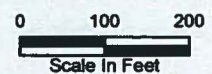


LEGEND:

- Centerline
- Construction Corridor
- Study Area
- Stream (GAI Delineated)
- Stream (CH Delineated)
- Pond (CH Delineated)
- Wetland (CH Delineated)
- PEM
- PFO
- PSS

Note: The LOD will be restricted to a 30-foot width at stream and wetland crossings.

BASE MAP SOURCE:
 ESRI World Imagery 2014



Duke Energy Walton-Big Bone
 Natural Gas Pipeline Project,
 Boone County, Kentucky

**FIGURE 4G
 WETLAND AND WATERBODIES
 DELINEATION MAP**

PN: 673325

DATE: 4/25/2016



CONFIDENTIAL PROPRIETARY TRADE SECRET

CREATED BY:

3igBone_gas_line\Maps\Report\WDR\Figure4_Delineated_Features_Review_8_11.mxd

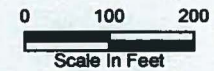


LEGEND:

- Centerline
- Construction Corridor
- Study Area
- Stream (GAI Delineated)
- Stream (CH Delineated)
- Pond (CH Delineated)
- Wetland (CH Delineated)
- PEM
- PFO
- PSS

Note: The LOD will be restricted to a 30-foot width at stream and wetland crossings.

BASE MAP SOURCE:
 ESRI World Imagery 2014



Duke Energy Walton-Big Bone
 Natural Gas Pipeline Project,
 Boone County, Kentucky

**FIGURE 4H
 WETLAND AND WATERBODIES
 DELINEATION MAP**

PN: 673325

DATE: 4/25/2016



CONFIDENTIAL PROPRIETARY TRADE SECRET

CREATED BY

31gBoone.gas_line\apps\Report\WDR\Figure4_Delineated_Features_Review_a_11.mxd



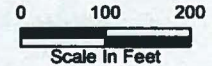
LEGEND:

- Centerline
- Construction Corridor
- Study Area
- Stream (GAI Delineated)
- Stream (CH Delineated)
- Pond (CH Delineated)
- Wetland (CH Delineated)
- PEM
- PFO
- PSS



Note: The LOD will be restricted to a 30-foot width at stream and wetland crossings.

BASE MAP SOURCE:
ESRI World Imagery 2014



Duke Energy Walton-Big Bone
Natural Gas Pipeline Project,
Boone County, Kentucky

**FIGURE 41
WETLAND AND WATERBODIES
DELINEATION MAP**

PN: 673325

DATE: 4/25/2016













CONFIDENTIAL PROPRIETARY TRADE SECRET

CREATED BY

31gBone_gas_line\Map\Report\WDR\Figure4_Delineated_Features_Review_8_11.mxd

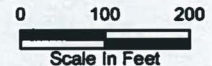


LEGEND:

-  Centerline
-  Construction Corridor
-  Study Area
-  Stream (GAI Delineated)
-  Stream (CH Delineated)
-  Pond (CH Delineated)
-  Wetland (CH Delineated)
-  PEM
-  PFO
-  PSS

Note: The LOD will be restricted to a 30-foot width at stream and wetland crossings.

BASE MAP SOURCE:
ESRI World Imagery 2014



Duke Energy Walton-Big Bone
Natural Gas Pipeline Project,
Boone County, Kentucky

FIGURE 4J
WETLAND AND WATERBODIES
DELINEATION MAP

PN: 673325

DATE: 4/25/2016



CONFIDENTIAL PROPRIETARY TRADE SECRET

CREATED BY:

3gBone_gas_line\Maps\Report\WDR\Figure4_Delineated_Features_Review_8_11.mxd



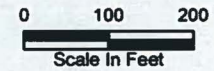
LEGEND:

- Centerline
- Construction Corridor
- Study Area
- Stream (GAI Delineated)
- Stream (CH Delineated)
- Pond (CH Delineated)
- Wetland (CH Delineated)
- PEM
- PFO
- PSS



Note: The LOD will be restricted to a 30-foot width at stream and wetland crossings.

BASE MAP SOURCE:
ESRI World Imagery 2014



Duke Energy Walton-Big Bone
Natural Gas Pipeline Project,
Boone County, Kentucky

**FIGURE 4K
WETLAND AND WATERBODIES
DELINEATION MAP**

PN: 673325

DATE: 4/25/2016



CONFIDENTIAL PROPRIETARY TRADE SECRET

CREATED BY

3igBone_gas_line\Maps\Report\WDR\Figure4_Delineated_Features_Review_B_11.mxd

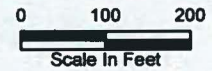


LEGEND:

- Centerline
- Construction Corridor
- Study Area
- Stream (GAI Delineated)
- Stream (CH Delineated)
- Pond (CH Delineated)
- Wetland (CH Delineated)
- PEM
- PFO
- PSS

Note: The LOD will be restricted to a 30-foot width at stream and wetland crossings.

BASE MAP SOURCE:
ESRI World Imagery 2014



Duke Energy Walton-Big Bone
Natural Gas Pipeline Project,
Boone County, Kentucky

**FIGURE 4L
WETLAND AND WATERBODIES
DELINEATION MAP**

PN: 673325

DATE: 4/25/2016



CONFIDENTIAL PROPRIETARY TRADE SECRET

CREATED BY

3lgBone.gas_line\maps\Report\WDR\Figure4_Delineated_Features_Review... 8_17.mxd



LEGEND:

- Centerline
- Construction Corridor
- Study Area
- Stream (GAI Delineated)
- Stream (CH Delineated)
- Pond (CH Delineated)
- Wetland (CH Delineated)
- PEM
- PFO
- PSS



Note: The LOD will be restricted to a 30-foot width at stream and wetland crossings.

BASE MAP SOURCE:
ESRI World Imagery 2014



Duke Energy Walton-Big Bone
Natural Gas Pipeline Project,
Boone County, Kentucky

**FIGURE 4M
WETLAND AND WATERBODIES
DELINEATION MAP**

PN: 673325

DATE: 4/25/2016

