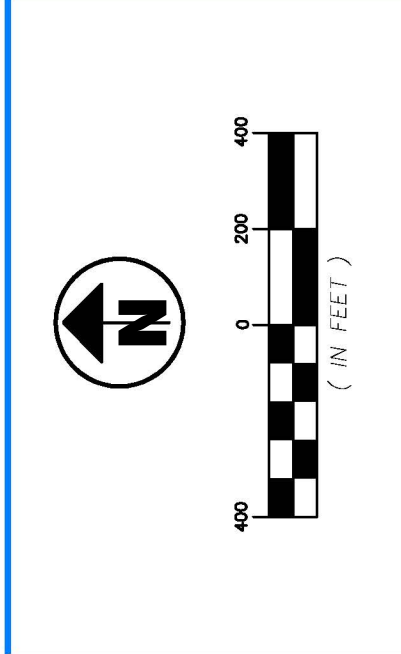


ATTACHMENT 40
Soils Inventory Map
Special Waste Landfill Permit
Big Sandy Plant – Ash Pond Closure
Lawrence County, Kentucky

A soil inventory map was created as part of the **Soil Borrow Study** in **Attachment 39**. The soil inventory map is also included as part of this attachment.



REVISIONS	
NO	DESCRIPTION

RECORD DRAWINGS	DATE	BY

NOTES:

- SUBSURFACE INVESTIGATION DATA FROM THE AEP 2009 BORROW STUDY AND URS 2012 INVESTIGATION WERE COMBINED WITH THE PREVIOUS SOILS MAP COMPLETED BY FMSM IN 2005 FOR THE BURKE BRANCH PERMIT APPLICATION.
- THE SOIL MAPPING INFORMATION SHOWN ON THIS DRAWING DEPICTS APPROXIMATE SUBSURFACE CONDITIONS ONLY AT THE SPECIFIC BORING/TEST PIT LOCATIONS AT THE TIME OF INVESTIGATION. CONDITIONS AT OTHER LOCATIONS MAY DIFFER FROM THOSE OCCURRING AT THE BORING LOCATIONS. ANY CORRELATIONS SHOWN BETWEEN BORINGS ARE GENERALLY BASED ON STRAIGHT LINE INTERPOLATION. ACTUAL CONDITIONS BETWEEN BORINGS ARE UNKNOWN AND MAY DIFFER FROM THOSE SHOWN.

REFERENCES:

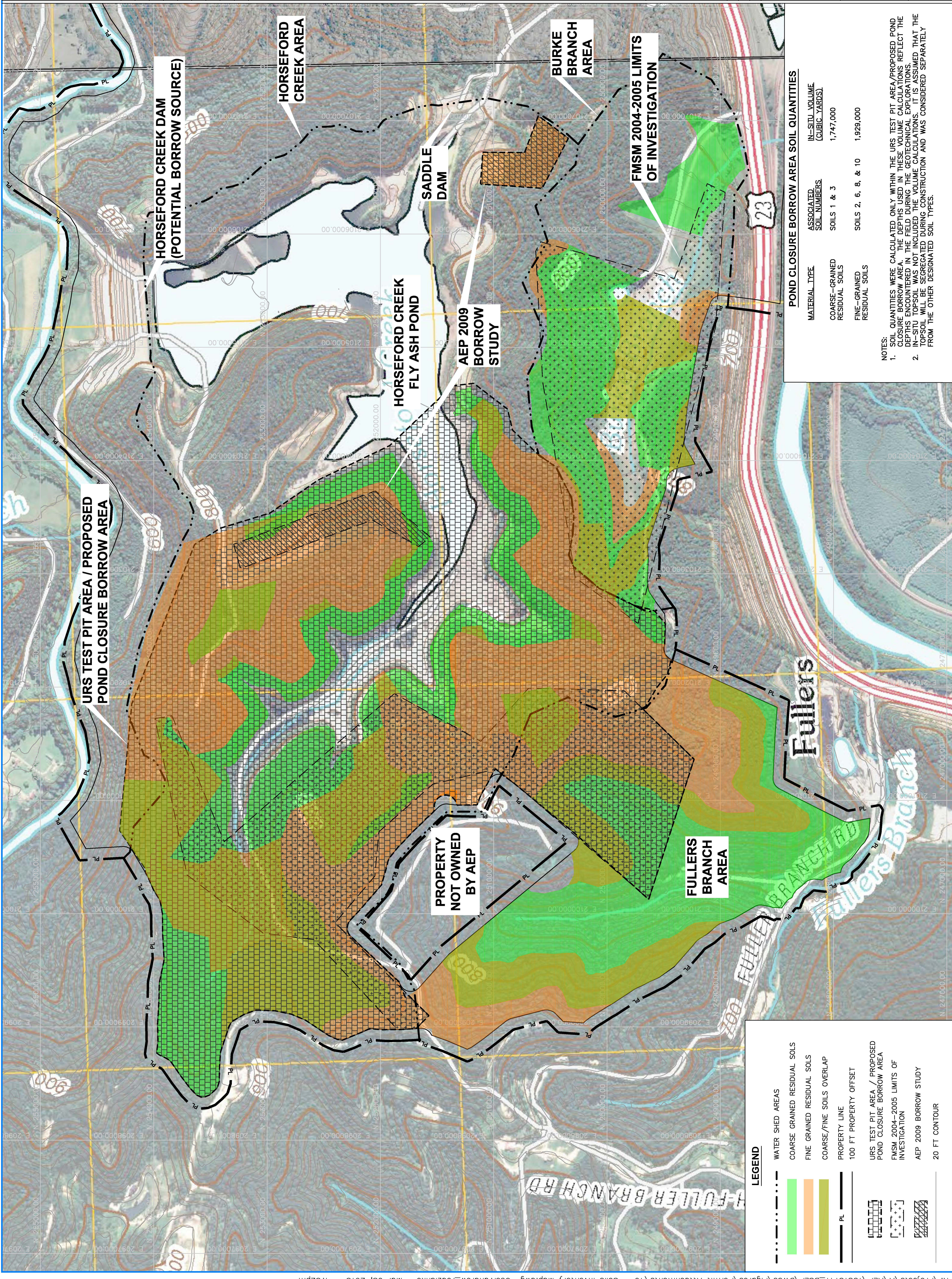
- TOPOGRAPHY FOR THE PLANT AREA PROVIDED BY GEONE (REYNOLDSBURG, OHIO) VIA AERIAL PHOTOMETRIC SURVEY PERFORMED ON APRIL 13, 2001 WITH CONTOUR INTERVAL OF 2 FT. TOPOGRAPHY: A MAJORITY OF THE PROPERTY PROVIDED BY HENDERSON AERIAL SURVEYS INC. (GROVE CITY, OHIO) VIA AERIAL PHOTOMETRIC SURVEY PERFORMED ON MARCH 9, 2007 WITH CONTOUR INTERVAL OF 2 FT. TOPOGRAPHY WAS SUPPLEMENTED IN PERIPHERAL AREAS WITH USGS TAGGED VECTOR CONTOURS FROM THE FALLSBURG AND PRICHARD USGS 7-1/2 MINUTE TOPOGRAPHIC QUADRANGLE MAPS.

DRAWN	ANR	DATE	9/12
CHECKED	MDR	JOB NO	13815151
SCALE	1" = 400'		

**AEP BIG SANDY
SOILS INVENTORY MAP**

URS
Akron Cleveland Columbus
564 White Pond Drive, Akron, Ohio 44320-1100
PHONE: (330) 836-9111. FAX: 330-836-9115

ATTACHMENT 40



POND CLOSURE BORROW AREA SOIL QUANTITIES

MATERIAL TYPE	ASSOCIATED SOIL NUMBERS	IN-SITU VOLUME (CUBIC YARDS)
COARSE-GRAINED RESIDUAL SOILS	SOILS 1 & 3	1,747,000
FINE-GRAINED RESIDUAL SOILS	SOILS 2, 6, 8, & 10	1,929,000

NOTES:

- SOIL QUANTITIES WERE CALCULATED ONLY WITHIN THE URS TEST PIT AREA/PROPOSED POND CLOSURE BORROW AREA. THE DEPTHS USED IN THESE VOLUME CALCULATIONS REFLECT THE DEPTHS ENCOUNTERED IN THE FIELD DURING THE GEOTECHNICAL EXPLORATIONS. IN-SITU TOPSOIL WAS NOT INCLUDED IN THE VOLUME CALCULATIONS. IT IS ASSUMED THAT THE TOPSOIL WILL BE SEGREGATED DURING CONSTRUCTION AND WAS CONSIDERED SEPARATELY FROM THE OTHER DESIGNATED SOIL TYPES.

LEGEND

	WATER SHED AREAS
	COARSE GRAINED RESIDUAL SOILS
	FINE GRAINED RESIDUAL SOILS
	COARSE/FINE SOILS OVERLAP
	PROPERTY LINE
	100 FT PROPERTY OFFSET
	URS TEST PIT AREA / PROPOSED POND CLOSURE BORROW AREA
	FMSM 2004-2005 LIMITS OF INVESTIGATION
	AEP 2009 BORROW STUDY
	20 FT CONTOUR