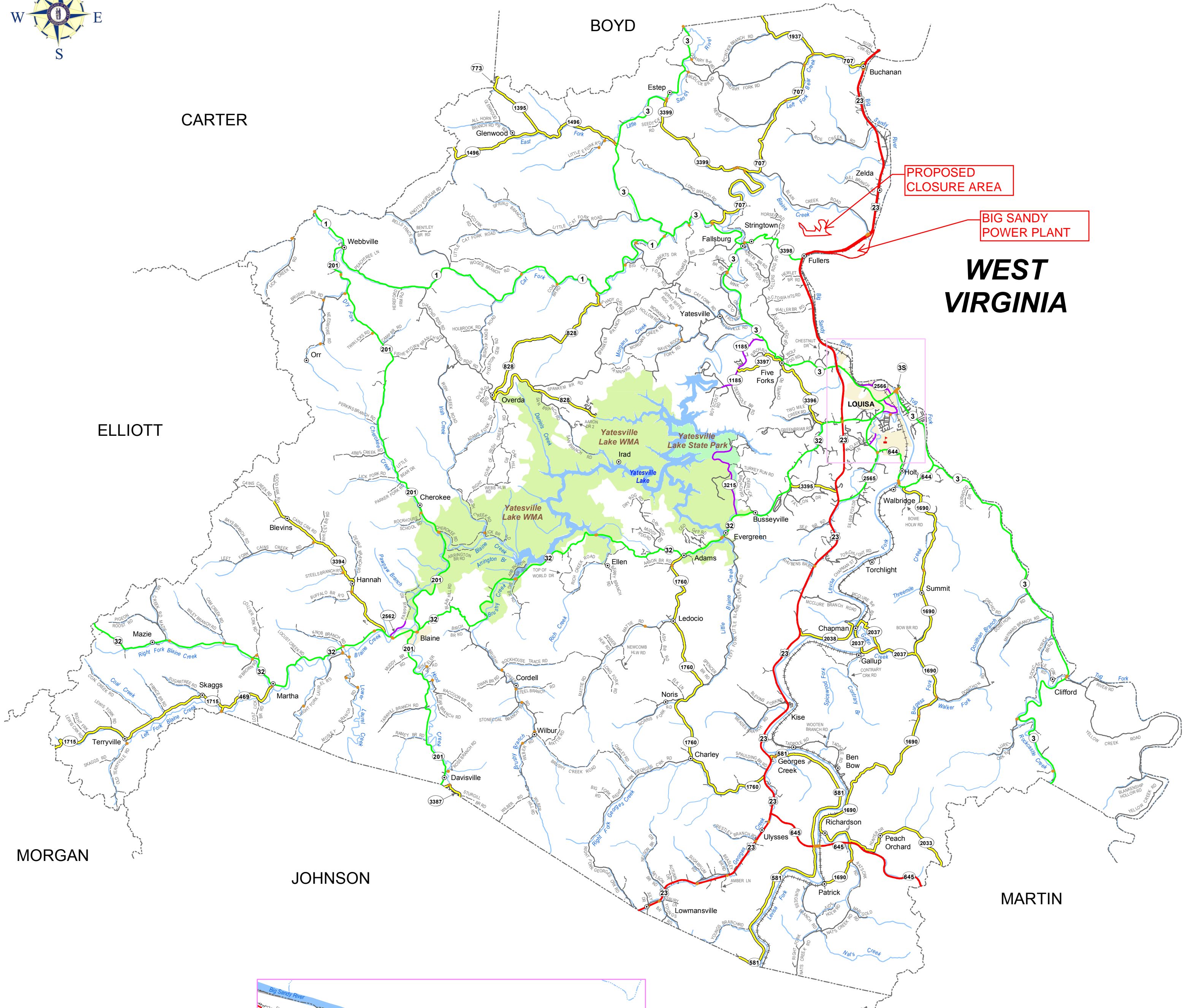


**ATTACHMENT 19**  
**General County Highway Map**  
**Special Waste Landfill Permit**  
**Big Sandy Plant – Ash Pond Closure**  
**Lawrence County, Kentucky**

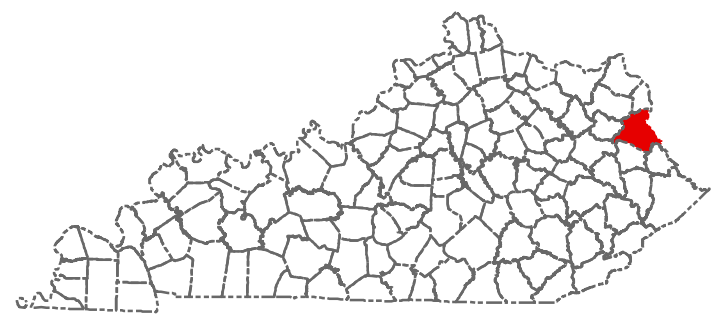
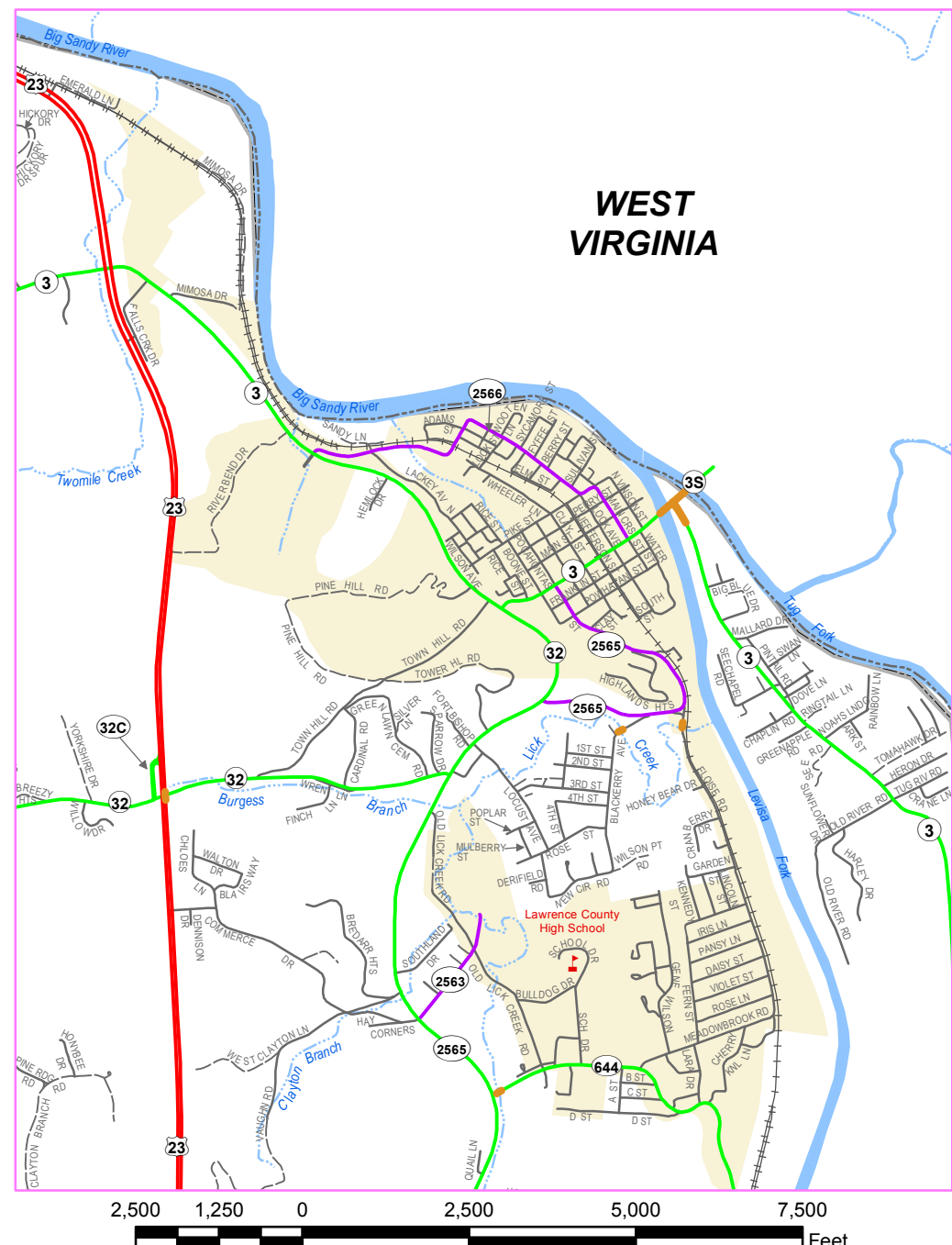
A copy of the general county highway map for Lawrence County, Kentucky is provided as part of this attachment. The map can be downloaded from the Kentucky Transportation Cabinet at <http://www.planning.kytc.ky.gov> and was accessed on January 19, 2013 for this project.



PROPOSED CLOSURE AREA

BIG SANDY POWER PLANT

WEST VIRGINIA



- State Primary Road System**
- Interstate
  - Parkway
  - Other State Primary
  - State Secondary
  - Rural Secondary
  - Supplemental Road
  - Unimproved
  - Paved or Concrete
  - Bridge
  - Railroad
  - Stream
  - City/Town
  - Incorporated Area
  - Lake
  - State Park
  - National Park or Recreation Area
  - Defense Facility
  - Wildlife Area
  - Geological Area
  - State, National, or Private Forest

The Kentucky Transportation Cabinet does not warrant that the information contained on this map is accurate or complete. The Kentucky Transportation Cabinet states that all attempts are made to insure the correctness of road network portrayal and it is based on the best available information at a given time but disclaims any and all representations and/or warranties made with respect to this map by any contributing source as to its contents, whether expressed, implied, or statutory, including, but not limited to, warranties of title, merchantability, and fitness for a particular purpose. Incorporated area boundaries are based on KRS 81A.470 filings recorded in the Kentucky Secretary of State's Office.

Division of Planning

**State Primary Road System**

**LAWRENCE COUNTY**

2 1 0 2 4 Miles

Last map revision: JULY 2012

Road centerlines collected using GPS technology

Kentucky State Plane Coordinate System (NAD83)

[www.planning.kytc.ky.gov/](http://www.planning.kytc.ky.gov/)