



Mr. Jeff Moore  
Commonwealth of Kentucky  
Public Service Commission  
P. O. Box 615  
Frankfort, KY. 40602

July 11, 2012

RE: KPCo 06/29/2012 Wind Storm Outage Incidents  
Ashland and Pikeville Districts

Dear Jeff:

This is a follow-up summary of Kentucky Power Company's initial report of the above styled outage incidents that began around 6:00 p.m., June 29, 2012, when a strong line of thunderstorms, with winds exceeding 60 mph, struck KPCo Ashland District, and moved quickly into Pikeville District, downing trees and power lines, thus interrupting electric service to thousands of KPCo customers within the two districts.

At the peak of the storm, approximately 63,800 customers were affected by the storms. By 9:00 a.m., June 30, 2012, the customer count was down to 54,000. By 10:40 a.m., June 30, 2012, the customer count was down to 52,827. By 8:00 p.m., June 30, 2012, the customer count was down to 36,000. By 7:00 p.m., July 1, the customer count was down to 19,000.

Sunday night, July 1, 2012, Kentucky Power had restored power to 70 percent of the 63,800 customers affected by the June 29 storm, when another round of severe weather hit Kentucky Power's Ashland and Pikeville service territories, at approximately 9:30 p.m., causing an additional 23,500 customers to lose power. At 10:00 a.m., 2012, July 2, approximately 43,000 customers were without power due to both storms. At 12:00 Noon, July 2, the customer count was up to 45,500. By 9:00 p.m., July 2, the customer count was down to 18,289. By 11:00 a.m., July 3, the customer count was down to 13,877. By 6 p.m., July 3, the customer count was down to 9,292. By 11 a.m., July 4, the customer count was down to 5,231. By 10:00 p.m., July 4, the customer count was down to 777. At 3:00 p.m., July 5, 2012, the customer count was down to approximately 700; at this time another round of strong thunderstorms hit Kentucky Power's service territory.

Preliminary reports indicate 78 broken poles, 77 transformers, 252 broken cross arms, 172,417 feet of wire and 11,462 splices were replaced during the course of the 06/29/2012 storm.

Kentucky Power brought in additional line workers, assessors and other personnel to assist in restoration efforts. During restoration, 162 KPCo employees, 96 storm assessors (external), 644 contract line employees (internal and external), 319 Asplundh Tree Expert employees, and 72 Area Wide Protection flaggers were utilized in line, assessor and support roles. This represents a total of 1,293 employees who participated in this large restoration effort.

I have attached several photos reflecting the 06/29/12 storm damage:

The photo below reflects storm damage in Ashland District. From the padmount that feeds the new Boyd County High School, Ashland, KY, to the structure that had the tarp across all three phases is 2,800 feet. The tarp was burnt so badly that men had to climb the structure and cut it off with a knife. (It appears the tarp may have blown from the new high school into our conductors during the storm.) If this hadn't hit our structure, it's possible that it would have made it to I-64. The photo doesn't really show how large the tarp really was.



media1.jpeg

The next three photos reflect storm damage in Pikeville District.



100\_4369.jpg



100\_4370.jpg



100\_4371.jpg

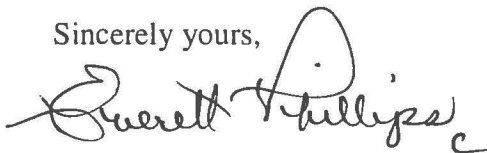
The final photo reflects more storm damage in Ashland District.



06292012AshlandStormDamage.pdf

Should you have any questions or need additional information regarding the 06/29/2012 event, please feel free to contact me at (606) 929-1463. A summary report of the 07/05/2012 event will follow.

Sincerely yours,

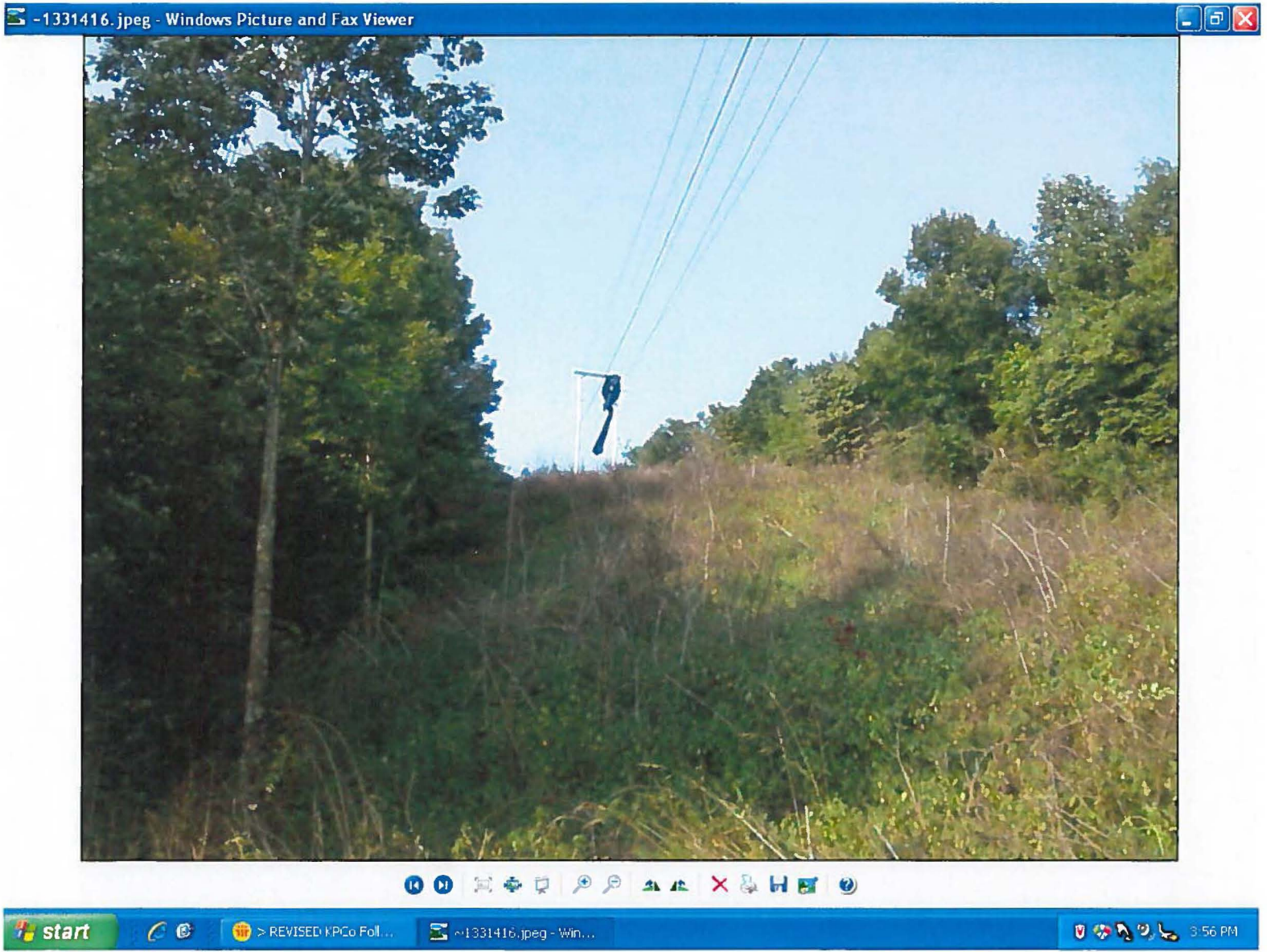


Everett Phillips  
Managing Director Distribution Operations

EP:jrc

cc: Steve Kingsolver  
Lila Munsey

**ASHLAND DISTRICT**  
**Tarp in Conductor**



**PIKEVILLE DISTRICT**  
**Storm Damage**

100\_4369.jpg - Windows Picture and Fax Viewer

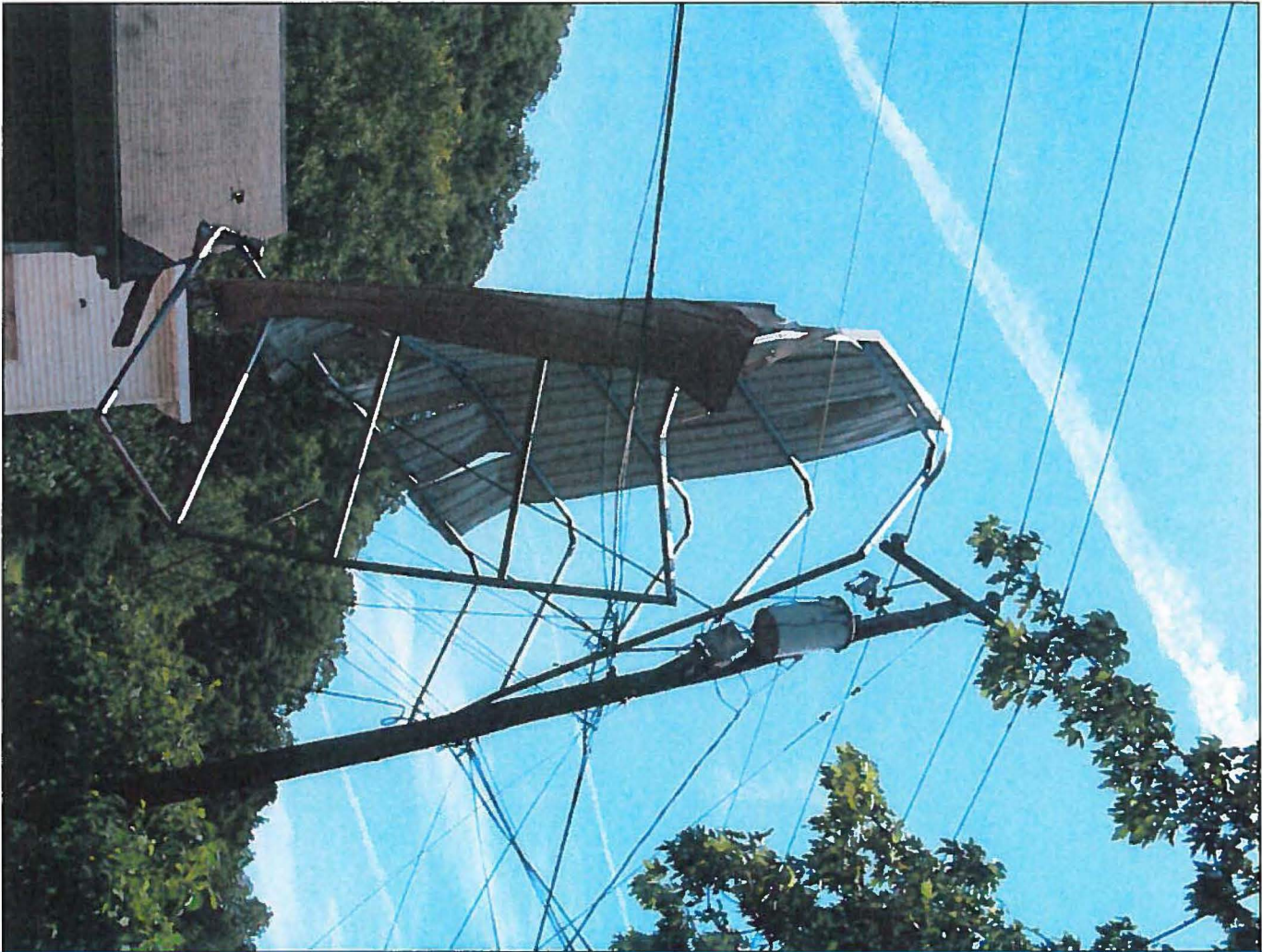


Windows Picture and Fax Viewer toolbar icons: back, forward, home, print, copy, paste, zoom, rotate, delete, refresh, help, and search.

Windows taskbar: start button, taskbar icons for 'REVISIED KPCo Fol...', '100\_4369.jpg - Wind...', system tray icons, and time '3:58 PM'.

Windows taskbar showing the Start button, system tray icons, and the active window title: "100\_4370.jpg - Wind..."

Windows Photo Viewer toolbar with icons for back, forward, home, stop, close, print, rotate, zoom, and other image manipulation functions.



Windows Photo Viewer toolbar showing the close, print, and zoom icons, and the window title: "100\_4370.jpg - Windows Picture and Fax Viewer".





**ASHLAND DISTRICT**  
**Storm Damage**







Sent from my iPhone

