

***American Electric Power  
Retirement Plan — East***

---

Actuarial Valuation Report

Pension Cost for Fiscal Year Ending December 31, 2007

Employer Contributions for Plan Year Beginning January 1, 2007

---

***May 2007***

This report is confidential and intended solely for the information and benefit of the immediate recipient thereof. It may not be distributed to a third party unless expressly allowed under the "Actuarial Certification, Reliances and Distribution" Section herein.



## *Table of Contents*

*Management Summary of Valuation Results*..... **MS**

*Supplemental Information*..... **SI**

*Miscellaneous by Location*..... **ML**



## ***Management Summary of Valuation Results***

<b><i>Financial Results</i></b> .....	<b><i>MS-1</i></b>
<b><i>Highlights</i></b> .....	<b><i>MS-3</i></b>
<b><i>FAS 87 Pension Cost and Funded Position</i></b> .....	<b><i>MS-7</i></b>
<b><i>Employer Contributions and ERISA Funded Position</i></b> .....	<b><i>MS-10</i></b>
<b><i>Actuarial Certification</i></b> .....	<b><i>MS-13</i></b>



## Financial Results

This report summarizes financial results for American Electric Power's (AEP) Retirement Plan for East Employees based on actuarial valuations as of January 1, 2007, and January 1, 2006.

	January 1, 2007	January 1, 2006
<b>FAS 87 Pension Cost</b>		
Amount	\$ 35,449,208	\$ 44,579,070
Percent of covered pay	3.1%	4.1%
<b>FAS 87 Funded Position</b>		
Accumulated benefit obligation [ABO]	\$ 2,855,230,126	\$ 2,900,638,374
Projected benefit obligation [PBO]	2,997,063,353	3,035,914,899
Fair value of assets [FV]	3,160,858,560	2,982,806,371
Overfunded (underfunded) PBO	163,795,207	(53,108,528)
PBO funded percentage [FV ÷ PBO]	105.5%	98.3%
<b>Employer Contributions</b>		
Minimum required	\$ 0	\$ 0
Percent of covered pay	0.0%	0.0%
Maximum deductible	\$ 1,355,547,872	\$ 1,276,138,811
Percent of covered pay	118.9%	118.5%
<b>ERISA Funded Position</b>		
Actuarial accrued liability [AAL]	\$ 2,433,868,439	\$ 2,363,628,658
Actuarial value of assets [AV]	2,994,330,956	2,940,626,547
AAL funded percentage [AV ÷ AAL]	123.0%	124.4%
<b>Current liability funded percentage:</b>		
▶ Selected interest rate	103.6%	104.6%
▶ Highest allowable interest rate	103.6%	104.6%

## Discussion of Financial Results

The financial results of AEP's East Retirement Plan were affected by the following factors:

- ▶ On August 17, 2006, the Pension Protection Act (PPA) was signed into law. Among other provisions, the PPA:
  - Extended interest rate relief for calculating current liability for the 2006 and 2007 plan years.
  - Modified several aspects of the calculation of the maximum tax-deductible contribution for 2006 and 2007 (most notably, increased the maximum deductible amount from 100% of the plan's unfunded current liability to 150%).
  - Beginning with 2008, made extensive changes in the determination of both the minimum required contribution and the maximum tax-deductible limit.

Note that there is some uncertainty regarding how the 25% of pay combined deductible limit for DB and DC plans is to be applied for 2007. Maximum amounts contained in this report may require modification when regulations are issued clarifying these uncertainties.

- ▶ The mortality table used for the calculation of current liability was changed from 1983 GAM to RP-2000 to reflect final IRS regulations issued in February 2007, which had no effect on the minimum required contribution and decreased the current liability funded percentage.
- ▶ Investment returns during the prior year were higher than expected, which increased the funded percentage and decreased the pension cost.
- ▶ The bond yields on available high-quality bonds used in selecting the FAS 87 discount rate increased during the prior year, resulting in a higher FAS 87 discount rate, which decreased the pension cost.
- ▶ The plan experienced demographic losses primarily due to (i) more active employees continuing in active status than expected (i.e., fewer terminations during 2006 among nonvested participants), (ii) bonus amounts paid in 2006 being greater than assumed, (iii) more retired participants from terminated vested status than expected and (iv) more retirees from active status electing an annuity than expected. The effect of these losses increased the pension cost.
- ▶ The current liability interest rate was changed from 5.77% to 5.78%, which slightly increased the current liability funded percentage.
- ▶ There continues to be no minimum required contribution required by ERISA.



## Highlights

### Economic Assumptions

The discount rate for pension cost purposes reflects the time value of money as of the measurement date. This rate is based on high-grade bond yields, after allowing for call and default risk. AEP selects a rate based on each plan's expected cash flows. The duration of the plan is 9.45 years. The following benchmark bond yields illustrate the general interest rate environment:

	December 31, 2006	December 31, 2005
30-year Treasury	4.81%	4.54%
Merrill Lynch 10+ High Quality	5.85%	5.68%
Moody's Aa	5.72%	5.41%

The assumed rate of return on assets for pension cost purposes is the weighted average of expected long-term asset return assumptions. The salary increase rate is a long-term rate based on current expectations of future pay increases. The assumptions for pension cost purposes are:

	December 31, 2006	December 31, 2005
Discount rate	5.75%	5.50%
Rate of return on assets	8.50%	8.50%
Salary increase rate	Rates vary by age from 5.00% to 11.50%	Rates vary by age from 5.00% to 11.50%

Assumptions used to determine statutory contribution limits must be reasonable taking into account the experience of the plan and reasonable expectations. The discount rate used to determine the normal cost and actuarial accrued liability is based on the long-term expected return on assets. The selected current liability interest rate must be within the permissible range as issued by the IRS. That range and assumptions for contribution purposes are:

	January 1, 2007	January 1, 2006
Discount rate for normal cost and actuarial accrued liability	8.50%	8.50%
Current liability interest rates:		
▶ Permissible range	5.21% to 5.78%	5.19% to 5.77%
▶ Selected rate	5.78%	5.77%
Salary increase rate	Rates vary by age from 5.00% to 11.50%	Rates vary by age from 5.00% to 11.50%

### Demographic Assumptions

The cost of providing plan benefits depends on demographic factors such as retirement, mortality and turnover. With the exception of the IRS-required mortality basis used to calculate current liability, demographic assumptions used in the valuation were selected to reflect the experience of the covered population and reasonable expectations. If actual experience is more favorable than assumed, future plan costs will be lower. Alternatively, if actual experience is less favorable than assumed, future plan costs will be higher.

The mortality basis used to calculate current liability was changed from 1983 GAM to RP-2000 with mortality improvement projections to reflect final IRS regulations issued in February 2007. Plans were given the option to use separate non-annuitant and annuitant mortality tables, or to use a single combined table of non-annuitant and annuitant mortality. For purposes of the 2007 plan year valuation, a single combined table was used. The mortality assumption for purposes other than current liability has been updated from 1994 GAM to separate RP-2000 non-annuitant and annuitant mortality tables with mortality improvement projections. This update was made to align all mortality table assumptions with IRS guidance. No other demographic assumptions have changed since the prior valuation.

## Assets

In the year ended December 31, 2006, the plan's portfolio achieved a 12.8% investment return (net of expenses), while the capital markets performed as follows:

Large equities [S&P 500]	15.8%
Intermediate/small equities [Russell 2500]	16.2%
Non-U.S. equities [EAFE]	26.9%
Bonds [Lehman Brothers Aggregate]	4.3%
Cash equivalents [Citi 3-Month Treasury Bill]	4.8%

## Changes in Benefits Valued

- ▶ Increases in statutory pay and benefit limits.
- ▶ A provision of PPA required vesting for cash balance pension plans to be changed from a minimum of 5-year cliff vesting to 3-year cliff vesting.
- ▶ Statutory limits on compensation that were temporarily increased under provisions of the Economic Growth and Tax Relief Reconciliation Act of 2001 (EGTRRA) were made permanent under PPA (impacts FAS 87, FAS 132(r), and FAS 158 calculations only).

## Legislative Changes

On August 17, 2006, PPA was signed into law. Among other provisions, the PPA:

- ▶ Extended current liability interest rate relief for the 2006 and 2007 plan years.
- ▶ Modified several aspects of the calculation of the maximum tax-deductible contribution for 2006 and 2007 (most notably, increased the maximum deductible amount from 100% of the plan's unfunded current liability to 150%).
- ▶ Beginning with 2008, made extensive changes in the determination of both the minimum required contribution and the maximum tax-deductible limit.

Note that there is some uncertainty regarding how the 25% of pay combined deductible limit for DB and DC plans is to be applied for 2007. Maximum amounts contained in this report may require modification when regulations are issued clarifying these uncertainties.

In September 2006, the FASB issued Financial Accounting Standard No. 158, Employers' Accounting for Defined Benefit Pension and Other Postretirement Plans ("FAS 158"), which amends FAS 87, FAS 88, and FAS 132(R). FAS 158 requires recognition of the overfunded or underfunded status of pension and other postretirement benefit plans on the balance sheet.

Under FAS 158, gains and losses, prior service costs and credits, and any remaining transition amounts under FAS 87 that have not yet been recognized through net periodic benefit cost are recognized in accumulated other comprehensive income, net of tax effects.

These changes were effective for publicly held entities for fiscal years ending after December 15, 2006.

In February 2007, the IRS issued final regulations regarding the selection of the mortality basis used to calculate current liability. These regulations updated the basis from 1983 GAM sex-distinct mortality to RP-2000 sex-distinct mortality.

### PBGC Reporting Requirements

Beginning in 2007, the PPA eliminated the PBGC participant notification requirements for plans that are required to pay a PBGC variable premium and have a funded percentage below a specified "gateway" percentage. The PPA stipulates that all defined benefit plans are required to issue annual funding notices (due 120 days after the end of the plan year) for plan years beginning in 2008.

Additional financial and actuarial information must be provided to the PBGC if, at the end of the year, all defined benefit plans within the controlled group have an unfunded vested liability of \$50 million or more using assumptions mandated by the PBGC. In February 2007, the IRS updated the interest rate assumption and asset valuation method used to calculate the \$50 million "gateway test." The interest rate assumption was updated from 85% to 100% of the applicable PFEA corporate bond rate, and the asset valuation method was updated from actuarial value to market value for all calculations.

As of January 1, 2007, unfunded vested liabilities for all defined benefit plans within the controlled group were less than \$50 million. Consequently, reporting of additional financial and actuarial information was not required.

## FAS 87 Pension Cost and Funded Position

Pension cost is the amount recognized in AEP's financial statement as the cost of the pension plan and is determined in accordance with Financial Accounting Standard No. 87. The fiscal 2007 pension cost for the plan is \$35,449,208, or 3.1% of covered pay.

Under FAS 87, as amended by FAS 158, the projected benefit obligation (PBO) funded status of each pension plan at the plan's measurement date is required to be reported as an asset (for overfunded plans) or a liability (for underfunded plans). The PBO is the actuarial present value of benefits attributed to service rendered prior to the measurement date, measured using expected future pay increases for pay-related plans. The plan's overfunded (underfunded) PBO as of January 1, 2007, was \$163,795,207, based on a fair value of plan assets of \$3,160,858,560 and a PBO of \$2,997,063,353.

Fiscal year-end financial reporting and disclosures are prepared before detailed participant data and the full valuation results are available. Therefore, the December 31, 2006, postretirement benefit asset/(liability) was derived from the January 1, 2006, valuation results. The December 31, 2007, financial reporting information will be developed based on the results of the January 1, 2007, valuation, rolled forward to the end of the year and adjusted for the year-end discount rate and asset values, as well as significant changes in plan provisions and participant population.

### Change in Pension Cost and Overfunded (Underfunded) PBO

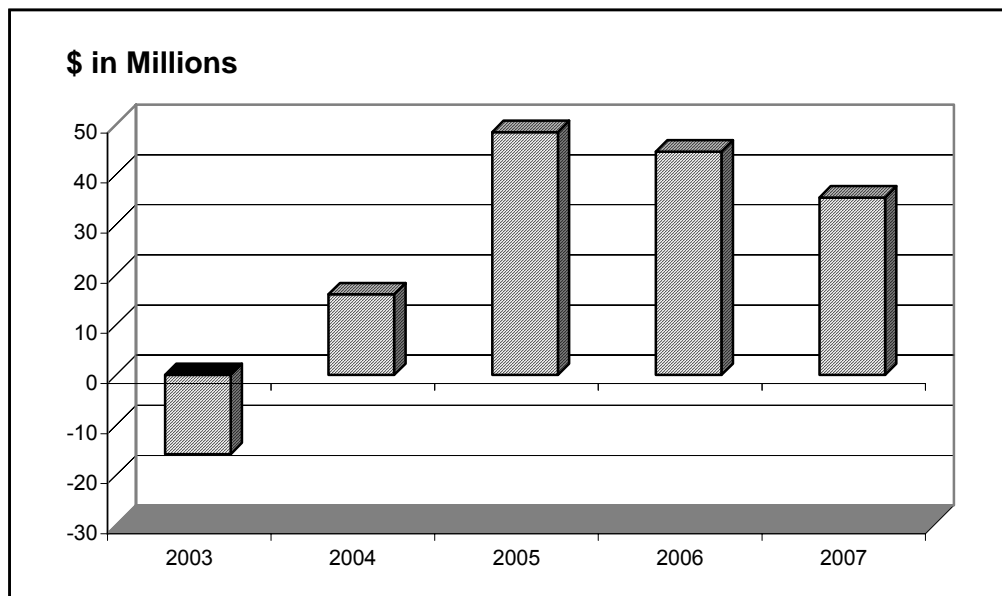
The pension cost decreased from \$44,599,070 in fiscal 2006 to \$35,449,208 in fiscal 2007, and the overfunded (underfunded) PBO increased from \$(53,108,528) to \$163,795,207 because:

- ▶ Expected changes, based on prior year's assumptions, methods, plan provisions and contributions, increased the pension cost approximately \$4,200,000.
- ▶ Noninvestment experience increased the pension cost approximately \$10,000,000.
- ▶ The return on the fair value of plan assets was 12.8% in fiscal 2006. This was greater than the expected rate of return, and thus decreased the pension cost by approximately \$15,200,000.
- ▶ Assumption changes decreased the pension cost approximately \$10,200,000.
- ▶ Changes in benefits valued increased the pension cost approximately \$2,100,000.

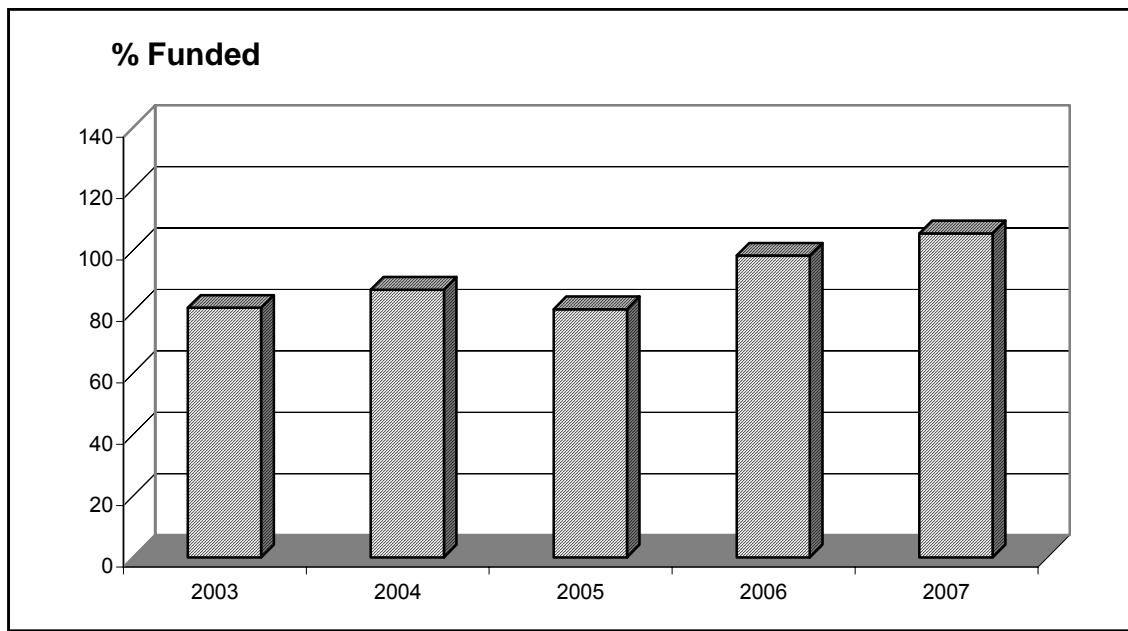
## History of Pension Cost and Funded Position

The following charts show the history of the plan's pension cost and PBO funded position:

### History of Pension Cost



### History of the Projected Benefit Obligation (PBO) Funded Status



---

History of Pension Cost and PBO Funded Percentage

----- Pension cost -----

<i>Fiscal year</i>	<i>Amount</i>	<i>Percent of covered pay</i>	<i>PBO funded percentage</i>	<i>Discount rate</i>
2007	\$ 35,449,208	3.1%	105.5%	5.75%
2006	44,579,070	4.1	98.3	5.50
2005	48,522,750	4.4	80.8	5.50
2004	16,123,936	1.5	87.2	6.25
2003	(15,794,829)	(1.4)	81.3	6.75

---

## Employer Contributions and ERISA Funded Position

AEP's funding policy is to contribute an amount equal to the minimum required contribution under ERISA. For 2007, there is no minimum required contribution. The maximum deductible contribution under the Internal Revenue Code is \$1,355,547,872, or 118.9% of covered pay.

The funded position, on a contribution basis, is measured by comparing the actuarial value of assets with the actuarial accrued liability (AAL). The actuarial value of assets is a smoothed value that recognizes investment gains and losses over time. The AAL is the funding target, under ERISA, on which the employer contribution limits are based. As the funded percentage for a plan approaches or exceeds 100%, contributions to the plan may be restricted.

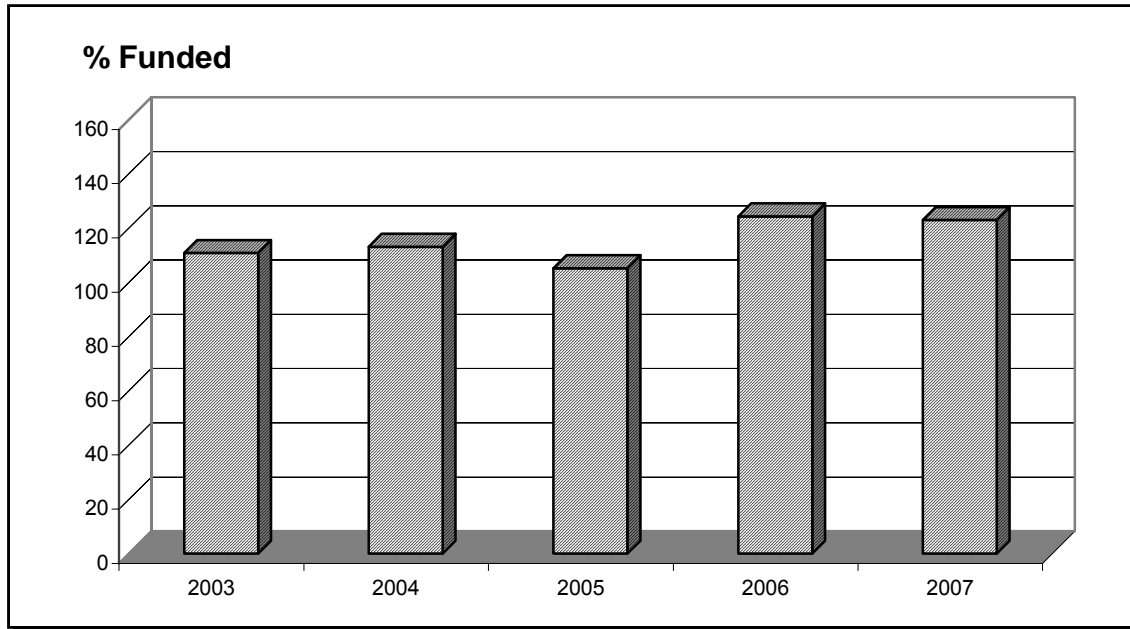
The plan's funded percentage (actuarial value of assets divided by AAL) is 123.0% as of January 1, 2007. This percentage is based on an actuarial value of assets of \$2,994,330,956 and an AAL of \$2,433,868,439.



## History of Employer Contributions and Funded Position

The following charts show a history of the AAL funded position, as well as the history of employer contributions and the funding range for 2007.

History of Actuarial Accrued Liability (AAL) Funded Position



History of Employer Contributions and AAL Funded Percentage and Current Year's Funding Range

--- *Employer contributions* ---

<i>Plan year</i>	<i>Amount</i>	<i>Percent of covered pay</i>	<i>AAL funded percentage</i>	<i>Discount rate</i>
2007:				
▶ Minimum	\$ 0	0.0%	123.0%	8.50%
▶ Maximum	1,355,547,872	118.9		
2006	0	0.0	124.4	8.50
2005	606,600,000	55.5	105.3	8.50
2004	16,123,936	1.5	113.2	8.50
2003	53,293,130	4.8	110.9	8.50

## Current Liability

An alternative measure of funded position compares the actuarial value of assets with the plan's current liability. The current liability is the present value of benefits accrued to the valuation date reflecting IRS restrictions on interest and mortality assumptions.

The Pension Protection Act of 2006 (PPA) extended interest rate relief created under the Pension Funding Equity Act of 2004 through the end of plan year 2007. PPA raised the ceiling on interest rates used to calculate current liability and, beginning with plan year 2008, PPA creates a new methodology for minimum required funding based on a single funding target percentage and interest rates chosen based on a plan's expected benefit payment stream.

If the current liability funded percentage is below 100%, quarterly contributions may be required in the following plan year. The plan's current liability funded percentage is 103.6% as of January 1, 2007. This percentage is based on an actuarial value of assets of \$2,994,330,956 and a current liability of \$2,891,127,456.

If the current liability funded percentage using the highest allowable interest rate is below 90%, additional funding requirements, as well as employee notification requirements, may be triggered. The highest allowable current liability interest rate for 2007 is 5.78%. The plan's current liability funded percentage on this basis is 103.6% as of January 1, 2007.

## Actuarial Certification, Reliances and Distribution

American Electric Power retained Towers Perrin to perform a valuation of its pension plan for the purpose of determining (1) its pension cost in accordance with FAS 87 and (2) the minimum required and maximum tax-deductible contributions in accordance with ERISA and allowed by the Internal Revenue Code. This valuation has been conducted in accordance with generally accepted actuarial principles and practices.

The consulting actuaries are members of the Society of Actuaries and other professional actuarial organizations and meet their "General Qualification Standard for Prescribed Statements of Actuarial Opinions" relating to pension plans.

In preparing the results presented in this report, we have relied upon information provided to us regarding plan provisions, plan participants, and plan assets. While the scope of our engagement did not call for us to perform an audit or independent verification of this information, we have reviewed this information for reasonableness but have not audited it. The accuracy of the results presented in this report is dependent upon the accuracy and completeness of the underlying information.

The actuarial assumptions and the accounting policies and methods employed in the development of the pension cost have been selected by the plan sponsor, with the concurrence of Towers Perrin. FAS 87 requires that each significant assumption "individually represent the best estimate of a particular future event."

The actuarial assumptions and methods employed in the development of the contribution limits have been selected by Towers Perrin, with the concurrence of the plan sponsor. The Internal Revenue Code requires the use of assumptions "each of which is reasonable (taking into account the experience of the plan and reasonable expectations)" and "which, in combination, offer the actuary's best estimate of anticipated experience under the plan."

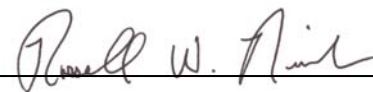
The results shown in this report have been developed based on actuarial assumptions that are considered to be reasonable and within the "best-estimate range" as described by the Actuarial Standards of Practice. Other actuarial assumptions could also be considered to be reasonable and within the best-estimate range. Thus, reasonable results differing from those presented in this report could have been developed by selecting different points within the best-estimate ranges for various assumptions.

The information contained in this report was prepared for the internal use of American Electric Power and its auditors in connection with our actuarial valuation of the pension plan. It is neither intended nor necessarily suitable for other purposes. American Electric Power may also distribute this actuarial valuation report to the appropriate authorities who have the legal right to require American Electric Power to provide them this report, in which case American Electric Power will use best efforts to notify Towers Perrin in advance of this distribution. Further distribution to, or use by, other parties of all or part of this report is expressly prohibited without Towers Perrin's prior written consent.



Joseph A. Perko, FSA, MAAA, EA  
Towers Perrin

May 2007



Russell W. Niswander, ASA

## ***Supplemental Information***

<b><i>Asset Values.....</i></b>	<b><i>SI-1</i></b>
<b><i>Basic Results for Pension Cost.....</i></b>	<b><i>SI-2</i></b>
<b><i>Pension Cost.....</i></b>	<b><i>SI-3</i></b>
<b><i>Selected Financial Statement Disclosure Information.....</i></b>	<b><i>SI-4</i></b>
<b><i>Present Value of Accumulated Plan Benefits for FAS 35.....</i></b>	<b><i>SI-6</i></b>
<b><i>Basic Results for Employer Contributions.....</i></b>	<b><i>SI-7</i></b>
<b><i>Minimum Required Employer Contribution.....</i></b>	<b><i>SI-8</i></b>
<b><i>Maximum Deductible Employer Contribution.....</i></b>	<b><i>SI-9</i></b>
<b><i>Actuarial Assumptions and Methods.....</i></b>	<b><i>SI-10</i></b>
<b><i>Participant Data.....</i></b>	<b><i>SI-14</i></b>
<b><i>Plan Provisions.....</i></b>	<b><i>SI-18</i></b>

## Asset Values

### Asset Values for Calculating Pension Cost

Fair value, excluding contributions receivable:

▶ As of January 1, 2006	\$	2,982,806,371
▶ Contributions		0
▶ Disbursements		(190,252,175)
▶ Investment return		<u>368,304,364</u>
▶ As of January 1, 2007	\$	3,160,858,560
▶ Rate of return		6.8%

Market-related value:

▶ As of January 1, 2006	\$	2,954,965,528
▶ As of January 1, 2007		3,002,105,003
▶ Rate of return		8.3%

### Asset Values for Calculating Employer Contributions

Market value, including contributions receivable:

▶ As of January 1, 2006	\$	2,982,806,371
▶ Contributions		0
▶ Disbursements		190,252,175
▶ Investment return		<u>368,304,364</u>
▶ As of January 1, 2007	\$	3,160,858,560
▶ Rate of return		6.8%

Actuarial value:

▶ As of January 1, 2006	\$	2,940,626,547
▶ As of January 1, 2007		2,940,626,546
▶ Rate of return		8.6%
Rate of return (assuming mid-year cash flow) for Schedule B of Form 5500		8.6%

SI-2

## Basic Results for Pension Cost

	January 1, 2007	January 1, 2006
Service Cost	\$ 74,028,096	\$ 73,359,591
Obligations		
Accumulated benefit obligation [ABO]:		
▶ Participants currently receiving benefits	\$ 1,329,976,436	\$ 1,402,427,494
▶ Deferred inactive participants	141,798,281	155,212,953
▶ Active participants	<u>1,383,455,409</u>	<u>1,342,997,927</u>
Total ABO	\$ 2,855,230,126	\$ 2,900,638,374
Obligation due to future salary increases	<u>141,833,227</u>	<u>135,276,525</u>
Projected benefit obligation [PBO]	\$ 2,997,063,353	\$ 3,035,914,899
Assets		
Fair value [FV]	\$ 3,160,858,560	\$ 2,982,806,371
Unrecognized investment losses (gains)	<u>(158,753,557)</u>	<u>(27,840,843)</u>
Market-related value	\$ 3,002,105,003	\$ 2,954,965,528
Amounts Not Yet Recognized in Net Periodic Cost		
Net actuarial loss (gain)	\$ 465,739,012	\$ 725,567,874
Prior service cost (credit)	22,616,902	24,270,845
Transition obligation (asset)	<u>0</u>	<u>0</u>
Total	\$ 488,355,914	\$ 749,838,719
Funded Position		
Overfunded (Unfunded) PBO	\$ (163,795,207)	\$ 53,108,528
PBO funded percentage	105.5%	98.3%
Key Economic Assumptions		
Discount rate	5.75%	5.50%
Rate of return on assets	8.50%	8.50%
Salary increase rate	Rates vary by age from 5.0% to 11.5%	Rates vary by age from 5.0% to 11.5%

## Pension Cost

	Fiscal 2007	Fiscal 2006
Pension Cost		
Service cost	\$ 74,028,096	\$ 73,359,591
Interest cost	169,298,435	164,449,819
Expected return on assets	(244,473,520)	(241,105,471)
Amortization:		
▶ Transition obligation (asset)	0	0
▶ Prior service cost (credit)	3,949,256	3,951,957
▶ Net loss (gain)	<u>32,646,941</u>	<u>43,923,174</u>
Pension cost	\$ 35,449,208	\$ 44,579,070
Percent of covered pay	3.1%	4.1%
Per active participant	\$ 2,329	\$ 3,016
Change in Pension Cost		
Pension cost for fiscal 2006		\$ 44,600,000
Change from fiscal 2006 to fiscal 2007:		
▶ Expected based on prior valuation		4,200,000
▶ Loss (gain) from noninvestment experience		10,000,000
▶ Loss (gain) from asset experience		(15,200,000)
▶ Assumption changes		(10,200,000)
▶ Plan amendments		<u>2,100,000</u>
Pension cost for fiscal 2007		\$ 35,500,000

## Selected Financial Statement Disclosure Information

The following information was included in AEP's 2006 pension disclosures. This information was developed by adjusting the prior year's valuation results for the passage of time and other significant changes.

	Fiscal 2006	Fiscal 2005
Change in Benefit Obligation		
PBO, beginning of year	\$ 3,105,732,893	\$ 2,889,589,764
Service cost	73,359,591	71,546,810
Interest cost	164,449,819	161,470,138
Plan amendments	1,787,065	0
Actuarial loss (gain)	(219,869,340)	167,979,286
Benefits paid	(190,252,175)	(184,853,105)
Effect of curtailments, settlements and termination benefits	<u>0</u>	<u>0</u>
PBO, end of year	\$ 2,935,207,853	\$ 3,105,732,893
Change in Plan Assets		
Fair value of plan assets, beginning of year	\$ 2,982,806,371	\$ 2,405,743,218
Actual return on plan assets	337,579,716	155,316,258
Employer contributions	0	606,600,000
Benefits paid	(190,252,175)	(184,853,105)
Settlements	<u>0</u>	<u>0</u>
Fair value of plan assets, end of year	\$ 3,130,133,912	\$ 2,982,806,371



The following information was also provided for 2006's pension financial reporting.

	December 31, 2006	December 31, 2005
Reconciliation of Funded Status		
Funded status [FV-PBO]	\$ 194,926,059	\$ (122,926,522)
Unrecognized net actuarial loss (gain)	N/A	795,385,868
Unrecognized prior service cost (credit)	N/A	24,270,845
Unrecognized transition obligation (asset)	N/A	<u>0</u>
Prepaid (accrued) pension cost	N/A	\$ 696,730,191

Amount Recognized in Statement  
of Financial Position

Noncurrent asset	\$ 194,926,059	N/A
Current liability	0	N/A
Noncurrent liability	0	N/A
Prepaid pension cost	N/A	\$ 696,730,191
Accrued pension cost	N/A	0
Intangible asset	N/A	0
Accumulated other comprehensive income	<u>N/A</u>	<u>0</u>
Net amount recognized	\$ 194,926,059	\$ 696,730,191

Amounts Recognized in  
Accumulated Other  
Comprehensive Income

Net actuarial loss/(gain)	\$ 43,923,174	N/A
Prior service cost/(credit)	3,951,957	N/A
Transition obligation/(asset)	<u>0</u>	N/A
Net amount recognized in AOCI	\$ 47,875,131	N/A

The accumulated other comprehensive income has not been tax effected. Any tax effect would have been separately recognized.

SI-6

## Present Value of Accumulated Plan Benefits for FAS 35

	January 1, 2007	January 1, 2006
Actuarial Present Value of Accumulated Plan Benefits		
Vested benefits:		
▶ Participants currently receiving benefits	\$ 1,129,447,583	\$ 1,135,197,742
▶ Other participants	<u>1,156,868,592</u>	<u>1,073,086,705</u>
▶ Total vested benefits	\$ 2,286,316,175	\$ 2,208,284,447
Nonvested benefits	<u>58,499,175</u>	<u>78,216,925</u>
Total accumulated benefits	\$ 2,344,815,350	\$ 2,286,501,372
Market value of assets	3,160,858,560	2,982,806,371
Key Assumptions		
Interest rate	8.50%	8.50%
Mortality	RP2000	GAM94
Change in Actuarial Present Value of Accumulated Plan Benefits		
Actuarial present value of accumulated plan benefits as of January 1, 2006	\$ 2,286,501,372	
Change from 2006 to 2007:		
▶ Additional benefits accumulated (including the effect of noninvestment experience)	62,372,798	
▶ Interest due to decrease in the discount period	186,431,785	
▶ Benefits paid	(190,252,175)	
▶ Assumption changes	(1,916,680)	
▶ Plan amendments	<u>1,678,250</u>	
Actuarial present value of accumulated plan benefits as of January 1, 2007	\$ 2,344,815,350	

## Basic Results for Employer Contributions

	January 1, 2007	January 1, 2006
Normal Cost and Liabilities		
Normal cost	\$ 56,172,575	\$ 53,538,543
Actuarial accrued liability [AAL]	2,433,868,439	2,363,628,658
Current liability [CL]:		
▶ Selected interest rate	2,891,127,456	2,812,121,663
▶ Highest allowable interest rate	2,891,127,456	2,812,121,663
Assets		
Market value	\$ 3,160,858,560	\$ 2,982,806,371
Unrecognized investment losses (gains)	(220,232,015)	(42,179,824)
Actuarial value [AV]	\$ 2,940,626,546	\$ 2,940,626,547
Funded Position		
Unfunded actuarial accrued liability [AAL – AV]	\$ (506,758,107)	\$ (576,997,889)
AAL funded percentage [AV ÷ AAL]	120.8%	124.4%
CL funded percentage:		
▶ Selected interest rate	101.7%	104.6%
▶ Highest allowable interest rate	101.7%	104.6%
Key Economic Assumptions		
Discount rate for normal cost and actuarial accrued liability	8.50%	8.50%
Current liability interest rate:		
▶ Selected	5.78%	5.77%
▶ Highest allowable	5.78%	5.77%
Salary increase rate	Rates vary by age from 5.0% to 11.5%	Rates vary by age from 5.0% to 11.5%

SI-8

## Minimum Required Employer Contribution

	January 1, 2007	January 1, 2006
Minimum Required Employer Contribution		
Normal cost	\$ 56,172,575	\$ 53,538,543
Amortization amounts	7,377,145	7,008,302
Interest adjustments	5,401,726	5,146,490
Additional funding charge	0	0
Credit balance with interest	<u>(661,985,845)</u>	<u>(675,818,638)</u>
Minimum required contribution before full funding limit	\$ 0	\$ 0
Minimum required contribution after full funding limit	0	0
Percent of covered pay	0.00%	0.00%
Per active participant	\$ 0	\$ 0
Changes in Minimum Required Employer Contribution		
Minimum required contribution as of January 1, 2006	\$ 0	
Changes from 2006 to 2007:		
▶ Expected based on prior valuation	0	
▶ Loss (gain) from noninvestment experience	0	
▶ Loss (gain) from asset experience	0	
▶ Change in assumptions	0	
Minimum required contribution as of January 1, 2007	\$ 0	

## Maximum Deductible Employer Contribution

	January 1, 2007	January 1, 2006
Maximum Deductible Employer Contribution		
Maximum deductible contribution before adjustments	\$ 60,947,244	\$ 58,089,427
Allowable deduction, the greatest of:		
▶ Maximum deductible contribution after full funding limit	0	58,089,427
▶ Contribution necessary to satisfy minimum funding standards	0	0
▶ Contribution necessary to fund 150% of current liability	1,355,547,872	1,276,138,811
Maximum deductible contribution	\$ 1,355,547,872	\$ 1,276,138,811
Percent of covered pay	118.8%	118.5%
Per active participant	\$ 89,075	\$ 86,331

The above amount represents the maximum deductible contribution for this plan. Deductibility of contributions to a defined contribution plan maintained for the same employees may be affected by the 25% of pay limitation for defined benefit and defined contribution plans combined.

Note that there is some uncertainty regarding how the 25% of pay combined deductible limit for DC and DB plans is to be applied for 2006 and 2007. Maximum amounts contained in this report may require modification when regulations are issued clarifying these uncertainties.

### Changes in Maximum Deductible Employer Contribution

Maximum deductible contribution as of January 1, 2006	\$ 1,276,138,811
Changes from 2006 to 2007:	
▶ Expected based on prior valuation	33,892,327
▶ Loss (gain) from noninvestment experience	(4,812,735)
▶ Loss (gain) from asset experience	(2,087,714)
▶ Change in assumptions	48,308,636
▶ Plan changes	4,108,548
Maximum deductible contribution as of January 1, 2007	\$ 1,355,547,872

SI-10

## Actuarial Assumptions and Methods

	Pension Cost		Contributions
<b>Economic Assumptions</b>			
▶ Discount rate		5.75%	8.50%
▶ Return on assets		8.50%	N/A
▶ Current liability		N/A	5.78%
▶ FAS 35		N/A	8.50%
Annual rates of increase in:			
▶ Total Compensation	<i>Age</i>	<i>Rate</i>	<i>Rate</i>
	<25	11.50%	11.50%
	25-34	9.50%	9.50%
	35-44	6.50%	6.50%
	>45	5.00%	5.00%
▶ Cash balance crediting rate and lump sum interest rate		5.25%	5.50%
▶ Future Social Security wage bases		4.00%	4.00%
▶ Indexed limits on compensation and benefits		3.00%	N/A
<b>Demographic Assumptions</b>			
Preretirement Healthy Mortality	RP2000, No Projection, No Collar Adjustment	RP2000, Projected to 2022, No Collar Adjustment (IRS Optional Table used for Current Liability)	
Postretirement Healthy Mortality	RP2000, No Projection, No Collar Adjustment	RP2000, Projected to 2014, No Collar Adjustment (IRS Optional Table used for Current Liability)	
Disabled Mortality	RP2000 Disabled Retiree, No Projection	RP2000 Disabled Retiree, No Projection (1983 Group Annuity Mortality used for Current Liability)	

Termination	Rates varying by age and service:		
		<i>Rate</i>	
		<i>Less than five</i>	<i>Five or more</i>
	<i>Age</i>	<i>years of service</i>	<i>years of service</i>
	<25	12.50%	10.00%
	25-30	12.50%	6.00%
	30-35	12.50%	5.00%
	35-40	12.50%	3.50%
	>40	12.50%	3.00%

Retirement Rates varying by age; average retirement age 60:

<i>Age</i>	<i>Rate</i>
55-57	7.5%
58-60	15.0%
61-63	35.0%
64-65	25.0%
66-69	20.0%
70+	100%

Form of payment 75% lump sum; 25% annuity.

Percent married 80% of male participants; 70% of female participants.

Spouse ages Wives are assumed to be three years younger than husbands.

Valuation pay 2007 Base Salary Pay (Grandfathered) – estimated as 2006 Base Pay updated one year according to the salary increase assumption.

2007 Expanded Pay (Cash Balance) – sum of the following updated one year according to the salary increase assumption:

- (i) 2006 base salary
- (ii) A 12% increase for overtime eligible employees and a target bonus percent increase for incentive-eligible employees.

SI-12

## Actuarial Methods

### Pension cost:

- ▶ Service cost and projected benefit obligation      Projected unit credit.
- ▶ Market-related value of assets      The market value on the valuation date less the following percentages of prior years' investment gains and losses:
  - 80% of the prior year
  - 60% of the second prior year
  - 40% of the third prior year
  - 20% of the fourth prior year.

The investment gain or loss is calculated each year by:

- Rolling forward the prior year's fair value of assets with actual contributions, benefit payments, and expected return on investments using the long-term yield assumption
- Comparing the actual fair value of assets to the expected value calculated above.

### Contributions:

- ▶ Normal cost and actuarial accrued liability      Projected unit credit.
- ▶ Actuarial value of assets      Same technique as above in market-related value, except the valuation interest rate is used to compute the expected market value; the actuarial value of assets must be within 20% of the fair value, plus contributions receivable.

- ▶ Benefits not valued      All benefits were valued except:
  - Any liabilities that may be reinstated in the event of reemployment
  - Preretirement death benefits for terminated vested participants
  - The alternate benefit formula for members who did not elect to withdraw their contributions
  - Any liabilities relating to member's unwithdrawn contributions
  - Liabilities related to special benefits as a result of termination due to restructuring or downsizing.



## Change in Assumptions and Methods Since Prior Valuation

### Pension Cost

- The discount rate for benefit obligations was changed from 5.50% to 5.75%.
- The mortality table used to value the benefit obligations was updated from 1994 GAM (male and female) to RP-2000, no collar adjustment, no projection.

### Contributions

- The selected current liability interest rate was changed from 5.77% to 5.78%. These rates are within the permissible ranges for these calculations.
- The required mortality table used to calculate current liability was changed from 1983 GAM to a version of RP-2000, single combined table of rates for annuitants and non-annuitants to comply with IRS regulations issued in 2007.
- The mortality table used to calculate the actuarial accrued liability was updated from 1994 GAM (male and female) to versions of RP-2000 with separate tables for annuitants and non-annuitants.

### Data Sources

Towers Perrin used participant and asset data as of January 1, 2007, and accrued pension costs as of December 31, 2006, supplied by AEP. Data were reviewed for reasonableness and consistency, but no audit was performed. Assumptions or estimates were made by Towers Perrin actuaries when data were not available. We are not aware of any errors or omissions in the data that would have a significant effect on the results of our calculations.

SI-14

## Participant Data

	January 1, 2007	January 1, 2006
Active		
Number	15,218	14,782
Average age	47.0	47.0
Average past service	18.1	18.4
Average future service	9.9	10.2
Covered pay:		
▶ Total	\$ 1,141,216,687	\$ 1,077,096,610
▶ Average	74,991	72,865
Deferred Inactive		
Number	3,757	3,859
Average age	50.7	50.1
Annual benefits:		
▶ Total	\$ 26,635,235	\$ 28,241,467
▶ Average	7,089	7,318
Currently Receiving Benefits		
Number	11,137	11,198
Average age	72.6	72.3
Annual benefits:		
▶ Total	\$ 143,039,877	\$ 143,475,024
▶ Average	12,844	12,813
Total Participants Included in Valuation		
Number	30,112	29,839

## Analysis of Inactive Participant Data

### Deferred Inactive

<i>Age nearest birthday</i>	<i>Number</i>	<i>Annual benefit</i>	<i>Average annual benefit</i>
< 40	170	\$ 906,792	\$ 5,334
40 – 44	488	2,504,851	5,133
45 – 49	928	5,955,610	6,418
50 – 54	1,060	8,443,217	7,965
55 – 59	761	6,222,203	8,176
60 – 64	325	2,492,422	7,669
> 64	<u>25</u>	<u>110,141</u>	4,406
Total	3,757	\$ 26,635,235	\$ 7,089

### Currently Receiving Benefits

<i>Age nearest birthday</i>	<i>Number</i>	<i>Annual benefit</i>	<i>Average annual benefit</i>
< 55	105	\$ 407,949	\$ 3,885
55 – 59	709	10,062,637	14,193
60 – 64	1,716	29,053,586	16,931
65 – 69	1,947	24,870,453	12,774
70 – 74	1,901	25,356,138	13,338
75 – 79	1,903	24,898,969	13,084
>79	<u>2,856</u>	<u>28,390,145</u>	9,941
Total	11,137	\$ 143,039,877	\$ 12,844

SI-16

Active Participant Data by Age and Service  
 AEP East Retirement Plan  
 2007 Projected Pay

Age Nearest Birthday	Completed Years of Service									Total
	0	1-4	5-9	10-14	15-19	20-24	25-29	30-34	Over 35	
0-24	Number	257	5	0	0	0	0	0	0	262
	Avg Pay	44,706	46,074	0	0	0	0	0	0	44,732
25-29	Number	589	195	0	0	0	0	0	0	784
	Avg Pay	52,782	57,063	0	0	0	0	0	0	53,847
30-34	Number	523	387	81	3	0	0	0	0	994
	Avg Pay	58,977	69,133	73,391	74,570	0	0	0	0	64,153
35-39	Number	441	410	246	169	3	0	0	0	1,269
	Avg Pay	63,301	75,475	76,939	77,486	90,904	0	0	0	71,832
40-44	Number	346	395	256	593	348	15	0	0	1,953
	Avg Pay	66,768	76,932	72,799	80,729	81,241	74,647	0	0	76,493
45-49	Number	248	312	196	488	742	1,010	39	0	3,035
	Avg Pay	69,637	77,991	70,592	75,884	83,429	78,483	72,883	0	77,919
50-54	Number	173	244	112	343	488	1,204	644	24	3,232
	Avg Pay	72,447	74,864	74,436	73,001	80,791	82,544	79,982	82,511	79,355
55-59	Number	99	175	90	194	301	524	679	523	2,585
	Avg Pay	72,492	78,980	68,946	70,014	76,229	80,041	83,239	82,334	79,401
60-64	Number	56	93	43	61	95	148	141	357	994
	Avg Pay	82,500	71,129	68,965	65,451	76,636	76,084	77,981	81,938	77,446
65-69	Number	8	28	12	8	7	10	10	14	97
	Avg Pay	69,194	66,501	63,170	64,019	99,434	56,718	91,717	73,423	71,073
Over 69	Number	1	8	0	1	2	1	0	0	13
	Avg Pay	128,297	62,866	0	44,395	70,774	63,122	0	0	67,715
Total	Number	2,741	2,252	1,036	1,860	1,986	2,912	1,513	918	15,218
	Avg Pay	60,825	73,200	72,982	76,018	81,036	80,221	81,152	82,049	74,991

Average Age = 47.0

Average Service = 18.1

Reconciliation of Participant Data

	<i>Active</i>	<i>Deferred Inactive</i>	<i>Currently receiving benefits</i>	<i>Total</i>
Included in January 1, 2006, valuation	14,782	3,859	11,198	29,839
Change due to:				
▶ New hire and rehire	1,167	(31)	0	1,136
▶ Nonvested termination	(192)	0	0	(192)
▶ Vested termination	(107)	107	0	0
▶ Retirement	(176)	(108)	284	0
▶ Disability	0	0	0	0
▶ Death without beneficiary	(11)	(4)	(369)	(384)
▶ Death with beneficiary	(5)	1	4	0
▶ Cashout	(242)	(115)	(1)	(358)
▶ Miscellaneous	<u>2</u>	<u>48</u>	<u>21</u>	<u>71</u>
▶ Net change	436	(102)	(61)	273
Included in January 1, 2007, valuation	15,218	3,757	11,137	30,112

## Plan Provisions

Effective Date	May 1, 1955. Restated effective January 1, 2001.
Recent Amendments	Effective as of March 27, 2006.
Covered Employees	Employees become Members of the Plan on the first day of the month following completion of one year of service.
Participation Date	Date of becoming a covered employee.
Definitions	
Grandfathered Employee	If on December 31, 2000, either: <ul style="list-style-type: none"><li>■ Participate in AEP System Retirement Plan, or</li><li>■ In one-year waiting period for AEP System Retirement Plan participation.</li></ul>
Vesting Service	A period of time from employment date to termination date and, in general, includes periods of severance that are not in excess of 12 months.
Accredited Service	Elapsed time from date of hire (from benefit service start date).
Final Average Pay	Average of the highest 36-consecutive months of base pay out of the last 120 months of employment, subject to IRS limits.
Cash Balance Pay	Pay received during the year, including base pay, overtime, shift differential/Sunday premium pay and incentive pay, subject to IRS limits.
Covered Compensation Amount	The average of the Social Security taxable wage base during the 35-year period including the year in which the participant retires, dies, becomes disabled or otherwise terminates employment. This monthly average is calculated to the next lower or equal whole dollar amount and is then rounded to nearest \$50.
Normal Retirement Date (NRD)	The first day of the calendar month whose first day is nearest the later of the member's 65 <sup>th</sup> birthday or the completion of five years of Vesting Service.

**Cash Balance Account** Recordkeeping account to which annual interest credits and annual compensation credits is credited. The cash balance account is updated at the end of each plan year and is equal to:

$$\begin{aligned} &\text{Cash Balance Account as of the} \\ &\text{End of the Prior Plan Year} \\ &+ \\ &\text{Interest Credits} \\ &+ \\ &\text{Company Credits} \end{aligned}$$

**Cash Balance Benefit** Cash Balance Account converted to a monthly annuity.

**Opening Balance** For those participating in or eligible for the AEP System Retirement Plan on December 31, 2000, opening balance is calculated as follows:

- Present value of monthly normal retirement benefit determined as of December 31, 2000, and payable at age 65 (or current age if older)
  - Present value determined based on 5.78% interest and IRS regulated mortality (GAM83 Unisex) data for lump sums (postretirement only)

Plus

- Credit for early retirement subsidy for monthly payments beginning at age 62 (or current age if older)

Plus

- Transition credit based on age, service and pay received in 2000 (see "Company Credits" for credit percentages)
  - Age and service based on completed whole years as of December 31, 2000.

For employees hired on or after January 1, 2001, opening balance is \$0.

**Interest Credits** Interest credits are applied to beginning of year account balance on December 31 each year.

Based on the average 30-year Treasury Bond rate for November of the previous year.

Minimum of 4%.

Company Credits Applied to account balance on December 31 or termination date if earlier.

Amount is a percentage of eligible pay received during the year, based on age plus years of Vesting Service (age and service in completed whole years as of December 31).

<i>Age Plus Years of Service</i>	<i>Annual Company Credit</i>
Less than 30	3.0%
30 – 39	3.5%
40 – 49	4.5%
50 – 59	5.5%
60 – 69	7.0%
70+	8.5%

Monthly Grandfathered Benefit Sum of (1)+(2)+(3):

- (1) 1.1% of Final Average Pay x Accredited Service up to 35 years
- (2) 0.5% of Final Average Pay Less Covered Compensation x Accredited Service up to 35 years
- (3) 1.33% of Final Average Pay x Accredited Service between 35 and 45 years.

Service continues to accrue and Final Average Pay grows through December 31, 2010.

Long-term Disability and Paid Leaves Compensation equal to base rate of pay as of disability date. Vesting service continues.

Unpaid Leave No compensation for annual compensation credit. Vesting service continues.

Eligibility for Benefits

Normal Retirement All members at or after their Normal Retirement Date.



Vested	All members who terminate employment after completion of three years of Vesting Service, or upon death.
Early Retirement	Any time after attainment of age 55 and completion of five years of vesting.
Disability	All members who are unable to work at own occupation solely because of sickness or injury for the first 24 months of disability. After 24 months of disability, the participant is eligible if unable to work at any gainful occupation for which the participant may be able, or may reasonably become qualified by education, training or experience, to perform.
Surviving Spouse	The surviving spouse of a Grandfathered Member who retired or is eligible to retire on Normal or Early Retirement and who was married to that spouse for the year preceding commencement and whose grandfathered benefit exceeds his or her Cash Balance Benefit.
Preretirement Death	Beneficiary of deceased member.

#### Monthly Benefits Paid Upon the Following Events

Normal Retirement	For Grandfathered Employees, the better of the monthly grandfathered benefit or the Cash Balance Benefit determined as of Normal Retirement Date. For all other employees, the Cash Balance Benefit determined as of Normal Retirement Date.
Early Retirement	For Grandfathered Employees, the better of:  (1) The monthly grandfathered retirement benefit reduced by 3% per year for each year commencement precedes age 62, and  (2) The Cash Balance Benefit determined as of the Early Retirement Date.  For all other employees, the Cash Balance Benefit determined as of the Early Retirement Date.

SI-22

Deferred Vested Retirement      The accrued Normal Retirement Benefit (better of Cash Balance and Grandfathered Benefits, if eligible), payable at Normal Retirement Date or actuarially reduced and payable at any age.

Disability      The greater of (1) or (2):

- (1) Accrued Grandfathered Retirement Benefit reduced as in the Early Retirement Benefit. If retirement occurs prior to age 55, the benefit is further reduced actuarially from age 55. The Disability Retirement Benefit will reflect Accredited Service that accrued (at most recent rate of base earnings) to a member while receiving benefits under the Company's LTD plan.

- (2) The Cash Balance Benefit with continued Company Credits while disabled.

Benefit (1) applies for Grandfathered Employees only.

Preretirement Death      Better of (1) or (2):

- (1) The grandfathered monthly benefit as if the employee commenced a 60% qualified joint and survivor benefit at his earliest retirement date
- (2) Annuity equivalent of Cash Balance account, or the cash balance account.

Benefit (1) applies for a Grandfathered Employee whose beneficiary is his or her spouse.

Surviving Spouse Benefits      A benefit payable for life equal to 30% of the single life annuity payable to the grandfathered member. The spouse's benefit is actuarially reduced for each year by which the spouse is more than ten years younger than the member. Payable to Grandfathered Employees only.

## Form of Payment

### ■ Grandfathered Employees

The following are available for Grandfathered Employees for both the Grandfathered Benefit and the Cash Balance Benefit.

- Full lump sum payment.
- Combination of partial lump sum (25%, 50% or 75% of full lump sum) with remainder paid as a monthly benefit (see below).
- Monthly payment:
  - Single life annuity.
  - Optional joint annuities (spouse or other beneficiary).
    - Available in 40%, 50%, 60%, 75%, 100%.
    - Can elect pop-up and/or level income options.
  - Automatic company-paid 30% surviving spouse annuity included in Grandfathered Benefit annuity if terminate on or after age 55 and married at least one year. Cash Balance Benefit is actuarially reduced for this feature.

### ■ Employees Hired on or After January 1, 2001

The following are available for those hired on or after January 1, 2001:

- Full lump sum payment.
- Combination of partial lump sum (25%, 50% or 75% of full lump sum) with remainder paid as a monthly benefit (see below).
- Monthly payment:
  - Single life annuity.
  - Joint annuities (spouse or other beneficiary).
    - Available in 50%, 75%, 100%.

## Member Contributions

Prior to January 1, 1978, employee contributions were required as a condition of Membership. In May and June of 1981, Members were permitted an election to withdraw those contributions. Those who did not elect to withdraw have retirement benefits based on a formula that differs from the one appearing in this table. However, the number of nonelecting Members is so small that special plan provisions for that group have not been included in this summary.

## Benefits Not Valued

A small portion of the population made employee contributions to the plan. Because the amount of these contributions is not material to the plan, they are not part of the valuation.

Participants who were employees of Columbus Southern Power (CSP) at the time AEP acquired that company have a frozen benefit under the CSP benefit formula at December 31, 1986. Benefits for these participants are the greater of an all-service AEP benefit and a two-part benefit consisting of the frozen CSP benefit plus an AEP benefit accrued from January 1, 1987. Because this applies to a small portion of the population and the CSP frozen benefit is not often the greater benefit for these participants, this benefit is not valued.

## Future Plan Changes

No future plan changes were recognized in determining pension cost. Towers Perrin is not aware of any future plan changes that are required to be reflected.

## Changes in Benefits Valued Since Prior Year

- ▶ Changes in the IRS pay cap and 415 limits.
- ▶ Vesting for cash balance plans was changed from a minimum of five-year cliff vesting to three-year cliff vesting under provisions of the Pension Protection Act of 2006 (PPA).
- ▶ Statutory limits on compensation that were temporarily increased under provisions of the Economic Growth and Tax Relief Reconciliation Act of 2001 (EGTRRA) were made permanent under PPA (impacts FAS 87, FAS 132(r), and FAS 158 calculations only).

**AMERICAN ELECTRIC POWER  
EAST RETIREMENT PLAN  
SUMMARY OF PLAN PARTICIPANTS FOR THE 2007 VALUATION**

ML - 1

Location	Vested Actives	Non-Vested Actives	Total Actives	Retirees Receiving Benefits	Beneficiaries	Deferred Vesteds	Total Inactives	Total Participants
AEP Energy Services, Inc.	5	0	5	3	0	38	41	46
AEP Pro Serv, Inc.	0	0	0	0	0	2	2	2
AEP T & D Services, LLC	0	0	0	0	0	0	0	0
American Electric Power Service Corporation	3,855	988	4,843	1,484	376	1,447	3,307	8,150
Appalachian Power Co - Distribution	1,143	58	1,201	1,201	422	325	1,948	3,149
Appalachian Power Co - Generation	996	88	1,084	624	200	98	922	2,006
Appalachian Power Co - Transmission	187	8	195	79	8	29	116	311
C3 Communications, Inc.	0	0	0	0	0	1	1	1
Cardinal Operating Company	235	10	245	140	49	26	215	460
AEP Texas Central Company - Distribution	61	114	175	2	1	1	4	179
AEP Texas Central Company - Generation	0	0	0	0	0	0	0	0
AEP Texas Central Company - Nuclear	0	0	0	0	0	0	0	0
AEP Texas Central Company - Transmission	7	13	20	1	0	0	1	21
Columbus Southern Power Co - Distribution	595	128	723	979	116	168	1,263	1,986
Columbus Southern Power Co - Generation	303	29	332	358	46	91	495	827
Columbus Southern Power Co - Transmission	49	11	60	76	14	13	103	163
Conesville Coal Preparation Company	13	0	13	4	0	0	4	17
Cook Coal Terminal	12	0	12	10	0	0	10	22
CSW Energy, Inc.	5	4	9	0	0	0	0	9
Elmwood	71	43	114	2	0	2	4	118
EnerShop Inc.	0	0	0	0	0	0	0	0
Indiana Michigan Power Co - Distribution	589	107	696	732	256	180	1,168	1,864
Indiana Michigan Power Co - Generation	405	28	433	257	82	188	527	960
Indiana Michigan Power Co - Nuclear	956	76	1,032	242	44	328	614	1,646
Indiana Michigan Power Co - Transmission	135	15	150	80	10	22	112	262
Kentucky Power Co - Distribution	282	11	293	167	68	87	322	615
Kentucky Power Co - Generation	137	13	150	64	20	18	102	252
Kentucky Power Co - Transmission	51	4	55	4	0	5	9	64
Kingsport Power Co - Distribution	45	3	48	43	15	21	79	127
Kingsport Power Co - Transmission	10	1	11	4	1	0	5	16
Memco	221	215	436	0	0	9	9	445
Ohio Power Co - Distribution	792	120	912	905	311	193	1,409	2,321
Ohio Power Co - Generation	755	88	843	593	195	159	947	1,790
Ohio Power Co - Transmission	188	32	220	105	35	23	163	383
Public Service Co of Oklahoma - Distribution	56	121	177	0	1	3	4	181
Public Service Co of Oklahoma - Generation	23	21	44	0	0	2	2	46
Public Service Co of Oklahoma - Transmission	2	10	12	1	0	0	1	13
Southwestern Electric Power Co - Distribution	33	87	120	0	0	1	1	121
Southwestern Electric Power Co - Generation	16	62	78	0	0	1	1	79
Southwestern Electric Power Co - Texas - Distribution	18	20	38	25	0	26	51	89
Southwestern Electric Power Co - Texas - Transmission	0	0	0	0	0	0	0	0
Southwestern Electric Power Co - Transmission	8	11	19	0	0	0	0	19
Water Transportation (Blackhawk)	217	90	307	112	34	26	172	479
AEP Texas North Company - Distribution	16	22	38	0	0	1	1	39
AEP Texas North Company - Generation	0	0	0	0	0	0	0	0
AEP Texas North Company - Transmission	2	3	5	0	0	0	0	5
Wheeling Power Co - Distribution	57	7	64	62	28	10	100	164
Wheeling Power Co - Transmission	0	0	0	6	8	1	15	15
Cedar Coal Co	4	0	4	77	38	15	130	134
Central Coal Company	0	0	0	0	0	0	0	0
Central Ohio Coal	0	0	0	67	15	40	122	122
Southern Ohio Coal - Martinka	0	0	0	65	12	63	140	140
Southern Ohio Coal - Meigs	2	0	2	71	32	19	122	124
Windsor	0	0	0	28	9	16	53	53
Price River Coal	0	0	0	15	2	5	22	22
Houston Pipeline (HPL)	0	0	0	1	0	54	55	55
<b>Total</b>	<b>12,557</b>	<b>2,661</b>	<b>15,218</b>	<b>8,689</b>	<b>2,448</b>	<b>3,757</b>	<b>14,894</b>	<b>30,112</b>

AMERICAN ELECTRIC POWER RETIREMENT PLAN-EAST

ML-2

FUNDED STATUS OF PRESENT VALUE OF ACCUMULATED PLAN BENEFITS (FAS 35) AS OF JANUARY 1, 2007

Location	Present Value of Vested Benefits	Present Value of Non-Vested Benefits	Present Value of Accumulated Plan Benefits	Market Value of Assets	Percent Funded
AEP Energy Services, Inc.	\$1,133,931	\$3,440	\$1,137,371	\$1,331,376	117.1%
AEP Pro Serv, Inc.	79,674	0	79,674	165,783	208.1%
AEP T & D Services, LLC	0	0	0	0	0.0%
American Electric Power Service Corporation	661,999,207	21,537,167	683,536,374	905,294,319	132.4%
Appalachian Power Co - Distribution	235,084,831	4,610,301	239,695,132	327,546,470	136.7%
Appalachian Power Co - Generation	176,587,583	4,677,238	181,264,821	240,671,006	132.8%
Appalachian Power Co - Transmission	30,930,428	883,885	31,814,313	43,375,969	136.3%
C3 Communications, Inc.	6,272	0	6,272	35,007	558.1%
Cardinal Operating Company	46,608,483	1,263,575	47,872,058	63,910,906	133.5%
AEP Texas Central Company - Distribution	1,529,787	117,390	1,647,177	1,949,148	118.3%
AEP Texas Central Company - Generation	0	0	0	0	0.0%
AEP Texas Central Company - Nuclear	0	0	0	0	0.0%
AEP Texas Central Company - Transmission	332,436	25,792	358,228	320,108	89.4%
Columbus Southern Power Co - Distribution	174,836,282	2,256,455	177,092,737	243,750,327	137.6%
Columbus Southern Power Co - Generation	78,104,854	1,530,390	79,635,244	108,921,226	136.8%
Columbus Southern Power Co - Transmission	18,517,874	275,379	18,793,253	26,536,700	141.2%
Conesville Coal Preparation Company	2,117,161	47,753	2,164,914	3,030,302	140.0%
Cook Coal Terminal	2,105,971	50,959	2,156,930	2,904,135	134.6%
CSW Energy, Inc.	107,278	15,408	122,686	282,563	230.3%
Elmwood	799,288	73,009	872,297	908,132	104.1%
EnerShop Inc.	0	0	0	0	0.0%
Indiana Michigan Power Co - Distribution	129,439,054	2,569,475	132,008,529	178,917,710	135.5%
Indiana Michigan Power Co - Generation	67,677,591	2,019,789	69,697,380	96,166,023	138.0%
Indiana Michigan Power Co - Nuclear	108,601,001	4,125,654	112,726,655	151,428,062	134.3%
Indiana Michigan Power Co - Transmission	24,942,599	658,178	25,600,777	34,740,379	135.7%
Kentucky Power Co - Distribution	45,682,633	1,219,918	46,902,551	64,466,708	137.4%
Kentucky Power Co - Generation	21,819,588	707,945	22,527,533	30,736,411	136.4%
Kentucky Power Co - Transmission	4,479,033	257,863	4,736,896	6,536,700	138.0%
Kingsport Power Co - Distribution	9,539,228	159,204	9,698,432	12,983,597	133.9%
Kingsport Power Co - Transmission	2,130,334	53,239	2,183,573	2,816,102	129.0%
Memco	4,724,396	463,770	5,188,166	5,015,114	96.7%
Ohio Power Co - Distribution	174,237,775	3,031,308	177,269,083	241,047,941	136.0%
Ohio Power Co - Generation	156,169,379	3,479,805	159,649,184	215,137,581	134.8%
Ohio Power Co - Transmission	38,148,512	868,365	39,016,877	52,662,997	135.0%
Public Service Co of Oklahoma - Distribution	1,412,228	175,668	1,587,896	1,815,806	114.4%
Public Service Co of Oklahoma - Generation	366,554	42,399	408,953	481,777	117.8%
Public Service Co of Oklahoma - Transmission	409,936	32,570	442,506	599,281	135.4%
Southwestern Electric Power Co - Distribution	797,889	130,273	928,162	1,063,157	114.5%
Southwestern Electric Power Co - Generation	752,353	177,051	929,404	1,021,611	109.9%
Southwestern Electric Power Co - Texas - Distribution	1,654,071	36,175	1,690,246	1,063,310	62.9%
Southwestern Electric Power Co - Texas - Transmission	0	0	0	0	0.0%
Southwestern Electric Power Co - Transmission	262,420	33,753	296,173	359,025	121.2%
Water Transportation (Blackhawk)	19,926,292	649,930	20,576,222	27,095,841	131.7%
AEP Texas North Company - Distribution	196,054	24,821	220,875	293,402	132.8%
AEP Texas North Company - Generation	0	0	0	0	0.0%
AEP Texas North Company - Transmission	32,287	1,158	33,445	37,985	113.6%
Wheeling Power Co - Distribution	12,057,925	195,260	12,253,185	17,049,408	139.1%
Wheeling Power Co - Transmission	948,869	0	948,869	1,389,174	146.4%
Cedar Coal Co	3,297,190	6,325	3,303,515	4,821,949	146.0%
Central Coal Company	0	0	0	0	0.0%
Central Ohio Coal	7,962,560	0	7,962,560	11,575,346	145.4%
Southern Ohio Coal - Martinka	5,032,238	0	5,032,238	8,021,826	159.4%
Southern Ohio Coal - Meigs	8,918,938	11,138	8,930,076	13,287,366	148.8%
Windsor	2,682,525	0	2,682,525	4,224,200	157.5%
Price River Coal	343,432	0	343,432	536,206	156.1%
Houston Pipeline (HPL)	789,951	0	789,951	2,533,088	320.7%
Total	\$2,286,316,175	\$58,499,175	\$2,344,815,350	\$3,160,858,560	134.8%

AMERICAN ELECTRIC POWER RETIREMENT PLAN-EAST  
 SUMMARY OF FAS 87 VALUATION RESULTS AS OF JANUARY 1, 2007

ML-3

Location	Actives	Number of Participants		Total	Valuation Earnings	Service Cost	Accumulated Benefit Obligation	Projected Benefit Obligation	December 31, 2006 (Accrued)/Prepaid Pension Cost
		Deferred Vested	Beneficiaries & Retirees						
AEP Energy Services, Inc.	5	38	3	46	\$0	\$19,725	\$1,518,307	\$1,519,765	(\$582,101)
AEP Pro Serv, Inc.	0	2	0	2	0	0	139,642	139,642	(41,046)
AEP T & D Services, LLC	0	0	0	0	0	0	0	0	(622)
American Electric Power Service Corporation	4,843	1,447	1,860	8,150	0	26,524,977	844,917,902	907,421,115	112,093,863
Appalachian Power Co - Distribution	1,201	325	1,623	3,149	0	5,427,918	288,758,196	298,338,600	88,016,272
Appalachian Power Co - Generation	1,084	98	824	2,006	0	5,448,398	218,916,389	228,066,982	50,685,384
Appalachian Power Co - Transmission	195	29	87	311	0	1,009,422	39,274,907	41,027,532	7,962,154
C3 Communications, Inc.	0	1	0	1	0	0	14,111	14,111	(43,819)
Cardinal Operating Company	245	26	189	460	0	1,288,723	57,842,650	60,303,887	12,804,899
AEP Texas Central Company - Distribution	175	1	3	179	0	394,566	2,200,702	2,928,389	(325,005)
AEP Texas Central Company - Generation	0	0	0	0	0	0	0	0	(9,240)
AEP Texas Central Company - Nuclear	0	0	0	0	0	0	0	0	0
AEP Texas Central Company - Transmission	20	0	1	21	0	58,017	458,639	558,783	(52,079)
Columbus Southern Power Co - Distribution	723	168	1,095	1,986	0	3,056,758	211,087,793	217,073,761	85,846,675
Columbus Southern Power Co - Generation	332	91	404	827	0	1,781,616	95,074,986	98,229,196	32,635,651
Columbus Southern Power Co - Transmission	60	13	90	163	0	296,894	22,238,491	22,891,791	9,089,627
Conesville Coal Preparation Company	13	0	4	17	0	90,045	2,568,969	2,757,496	218,286
Cook Coal Terminal	12	0	10	22	0	66,131	2,662,706	2,756,405	562,613
CSW Energy, Inc.	9	0	0	9	0	45,582	178,845	241,000	(31,269)
Elmwood	114	2	2	118	0	231,026	1,115,061	1,243,000	(383,677)
EnerShop Inc.	0	0	0	0	0	0	0	0	0
Indiana Michigan Power Co - Distribution	696	180	988	1,864	0	3,190,582	158,154,959	164,518,785	40,842,423
Indiana Michigan Power Co - Generation	433	188	339	960	0	2,214,996	85,825,173	89,580,121	17,149,008
Indiana Michigan Power Co - Nuclear	1,032	328	286	1,646	0	6,174,913	142,642,938	150,944,227	11,658,652
Indiana Michigan Power Co - Transmission	150	22	90	262	0	755,931	31,169,339	32,564,937	6,442,017
Kentucky Power Co - Distribution	293	87	235	615	0	1,374,556	57,237,489	59,627,980	12,821,136
Kentucky Power Co - Generation	150	18	84	252	0	743,953	27,479,358	28,598,820	5,878,340
Kentucky Power Co - Transmission	55	5	4	64	0	269,846	6,006,473	6,435,772	365,927
Kingsport Power Co - Distribution	48	21	58	127	0	215,056	11,698,795	12,053,813	3,725,162
Kingsport Power Co - Transmission	11	0	5	16	0	61,393	2,576,473	2,723,997	587,190
Memco	436	9	0	445	0	1,421,460	6,537,071	7,841,205	(3,350,646)
Ohio Power Co - Distribution	912	193	1,216	2,321	0	3,954,359	211,795,383	218,601,126	70,910,164
Ohio Power Co - Generation	843	159	788	1,790	0	4,070,851	193,236,809	199,920,997	52,958,494
Ohio Power Co - Transmission	220	23	140	383	0	1,096,791	46,878,950	48,741,350	12,707,187
Public Service Co of Oklahoma - Distribution	177	3	1	181	0	482,726	2,156,937	2,896,516	(558,103)
Public Service Co of Oklahoma - Generation	44	2	0	46	0	135,435	553,458	794,694	(174,203)
Public Service Co of Oklahoma - Transmission	12	0	1	13	0	39,703	566,746	630,479	96,621
Southwestern Electric Power Co - Distribution	120	1	0	121	0	295,520	1,301,448	1,786,968	(365,438)
Southwestern Electric Power Co - Generation	78	1	0	79	0	237,391	1,227,313	1,586,771	(152,492)
Southwestern Electric Power Co - Texas - Distribution	38	26	25	89	0	110,235	2,153,753	2,386,862	145,332
Southwestern Electric Power Co - Texas - Transmission	0	0	0	0	0	0	0	0	0
Southwestern Electric Power Co - Transmission	19	0	0	19	0	61,678	385,528	485,483	(29,960)
Water Transportation (Blackhawk)	307	26	146	479	0	981,936	25,111,647	26,642,393	2,437,455
AEP Texas North Company - Distribution	38	1	0	39	0	86,295	319,043	475,004	(98,399)
AEP Texas North Company - Generation	0	0	0	0	0	0	0	0	(8,322)
AEP Texas North Company - Transmission	5	0	0	5	0	15,881	48,763	83,459	(25,742)
Wheeling Power Co - Distribution	64	10	90	164	0	273,905	14,517,050	14,897,065	6,032,032
Wheeling Power Co - Transmission	0	1	14	15	0	0	1,101,176	1,101,176	677,507
Cedar Coal Co	4	15	115	134	0	10,826	3,878,825	3,889,639	3,254,746
Central Coal Company	0	0	0	0	0	0	0	0	3,979
Central Ohio Coal	0	40	82	122	0	0	9,574,918	9,574,918	3,408,929
Southern Ohio Coal - Martinka	0	63	77	140	0	0	6,425,137	6,425,137	1,925,489
Southern Ohio Coal - Meigs	2	19	103	124	0	12,080	10,856,462	10,897,788	3,854,294
Windsor	0	16	37	53	0	0	3,324,260	3,324,260	1,267,728
Price River Coal	0	5	17	22	0	0	421,145	421,145	334,590
Houston Pipeline (HPL)	0	54	1	55	0	0	1,099,011	1,099,011	(1,016,542)
<b>Total</b>	<b>15,218</b>	<b>3,757</b>	<b>11,137</b>	<b>30,112</b>	<b>\$0</b>	<b>\$74,028,096</b>	<b>\$2,855,230,126</b>	<b>\$2,997,063,353</b>	<b>\$652,151,121</b>

AMERICAN ELECTRIC POWER  
EAST RETIREMENT PLAN  
2007 NET PERIODIC PENSION COST

ML - 4

Location	Service Cost	Projected Benefit Obligation	Market-Related Value of Assets	Interest Cost	Expected Return on Assets	Amortization of Initial Transition (Asset)/ Obligation	Amortization of Prior Service Cost	Amortization of Gain/Loss Amortization	Net Periodic Pension Cost
AEP Energy Services, Inc.	\$19,725	\$1,519,765	\$1,264,508	\$84,867	(\$102,974)	\$0	\$3,299	\$16,555	\$21,472
AEP Pro Serv, Inc.	0	139,642	157,457	7,698	(12,822)	0	78	1,521	(3,525)
AEP T & D Services, LLC	0	0	0	0	0	0	0	0	0
American Electric Power Service Corporation	26,524,977	907,421,115	859,826,076	51,485,150	(70,019,102)	0	1,124,179	9,884,519	18,999,723
Appalachian Power Co - Distribution	5,427,918	298,338,600	311,095,507	16,745,576	(25,333,762)	0	405,895	3,249,795	495,422
Appalachian Power Co - Generation	5,448,398	228,066,982	228,583,348	12,872,879	(18,614,464)	0	287,916	2,484,328	2,479,057
Appalachian Power Co - Transmission	1,009,422	41,027,532	41,197,419	2,317,349	(3,354,872)	0	48,020	446,912	466,831
C3 Communications, Inc.	0	14,111	33,249	778	(2,708)	0	128	154	(1,648)
Cardinal Operating Company	1,288,723	60,303,887	60,700,992	3,395,383	(4,943,127)	0	74,027	656,889	471,895
AEP Texas Central Company - Distribution	394,566	2,928,389	1,851,252	183,183	(150,755)	0	8,690	31,899	467,583
AEP Texas Central Company - Generation	0	0	0	0	0	0	0	0	0
AEP Texas Central Company - Nuclear	0	0	0	0	0	0	0	0	0
AEP Texas Central Company - Transmission	58,017	558,783	304,031	34,002	(24,758)	0	1,127	6,087	74,475
Columbus Southern Power Co - Distribution	3,056,758	217,073,761	231,508,010	12,135,019	(18,852,631)	0	319,868	2,364,579	(976,407)
Columbus Southern Power Co - Generation	1,781,616	98,229,196	103,450,677	5,513,243	(8,424,406)	0	135,228	1,070,008	75,689
Columbus Southern Power Co - Transmission	296,894	22,891,791	25,203,899	1,278,310	(2,052,455)	0	32,550	249,360	(195,341)
Conesville Coal Preparation Company	90,045	2,757,496	2,878,106	156,975	(234,376)	0	3,218	30,037	45,899
Cook Coal Terminal	66,131	2,756,405	2,758,275	155,596	(224,617)	0	3,208	30,025	30,343
CSW Energy, Inc.	45,582	241,000	268,371	15,798	(21,855)	0	776	2,625	42,926
Elmwood	231,026	1,243,000	862,521	81,258	(70,239)	0	3,624	13,540	259,209
EnerShop Inc.	0	0	0	0	0	0	0	0	0
Indiana Michigan Power Co - Distribution	3,190,582	164,518,785	169,931,600	9,245,226	(13,838,216)	0	215,134	1,792,099	604,825
Indiana Michigan Power Co - Generation	2,214,996	89,580,121	91,336,102	5,060,341	(7,437,867)	0	112,198	975,794	925,462
Indiana Michigan Power Co - Nuclear	6,174,913	150,944,227	143,822,615	8,661,424	(11,712,056)	0	183,558	1,644,232	4,952,071
Indiana Michigan Power Co - Transmission	755,931	32,564,937	32,995,550	1,836,862	(2,686,961)	0	40,801	354,729	301,362
Kentucky Power Co - Distribution	1,374,556	59,627,980	61,228,879	3,362,855	(4,986,115)	0	70,801	649,526	471,623
Kentucky Power Co - Generation	743,953	28,598,820	29,192,680	1,617,564	(2,377,278)	0	35,453	311,526	331,218
Kentucky Power Co - Transmission	269,846	6,435,772	6,208,395	369,657	(505,575)	0	7,178	70,105	211,211
Kingsport Power Co - Distribution	215,056	12,053,813	12,331,498	676,339	(1,004,204)	0	15,997	131,302	34,490
Kingsport Power Co - Transmission	61,393	2,723,997	2,674,664	153,549	(217,809)	0	3,089	29,672	29,894
Memco	1,421,460	7,841,205	4,763,231	510,618	(387,889)	0	18,618	85,414	1,648,221
Ohio Power Co - Distribution	3,954,359	218,601,126	228,941,351	12,268,699	(18,643,618)	0	310,627	2,381,217	271,284
Ohio Power Co - Generation	4,070,851	199,920,997	204,332,334	11,245,351	(16,639,606)	0	266,538	2,177,735	1,120,869
Ohio Power Co - Transmission	1,096,791	48,741,350	50,018,007	2,747,401	(4,073,168)	0	65,228	530,938	367,190
Public Service Co of Oklahoma - Distribution	482,726	2,896,516	1,724,607	186,286	(140,442)	0	9,727	31,552	569,849
Public Service Co of Oklahoma - Generation	135,435	794,694	457,580	51,275	(37,263)	0	1,952	8,657	160,056
Public Service Co of Oklahoma - Transmission	39,703	630,479	569,182	36,945	(46,351)	0	1,462	6,868	38,627
Southwestern Electric Power Co - Distribution	295,520	1,786,968	1,009,760	114,800	(82,229)	0	6,056	19,465	353,612
Southwestern Electric Power Co - Generation	237,391	1,586,771	970,301	100,560	(79,016)	0	6,405	17,285	282,625
Southwestern Electric Power Co - Texas - Distribution	110,235	2,386,862	1,009,905	137,656	(82,241)	0	2,292	26,000	193,942
Southwestern Electric Power Co - Texas - Transmission	0	0	0	0	0	0	0	0	0
Southwestern Electric Power Co - Transmission	61,678	485,483	340,993	30,163	(27,768)	0	1,072	5,288	70,433
Water Transportation (Blackhawk)	981,936	26,642,393	25,734,957	1,522,832	(2,095,701)	0	39,757	290,215	739,039
AEP Texas North Company - Distribution	86,295	475,004	278,666	30,942	(22,693)	0	1,404	5,174	101,122
AEP Texas North Company - Generation	0	0	0	0	0	0	0	0	0
AEP Texas North Company - Transmission	15,881	83,459	36,077	5,476	(2,938)	0	32	909	19,360
Wheeling Power Co - Distribution	273,905	14,897,065	16,193,105	836,322	(1,318,670)	0	21,515	162,273	(24,655)
Wheeling Power Co - Transmission	0	1,101,176	1,319,403	60,704	(107,444)	0	1,872	11,995	(32,873)
Cedar Coal Co	10,826	3,889,639	4,579,767	215,019	(372,949)	0	8,980	42,370	(95,754)
Central Coal Company	0	0	0	0	0	0	0	0	0
Central Ohio Coal	0	9,574,918	10,993,976	527,831	(895,284)	0	13,405	104,299	(249,749)
Southern Ohio Coal - Martinka	0	6,425,137	7,618,931	354,195	(620,440)	0	7,950	69,989	(188,306)
Southern Ohio Coal - Meigs	12,080	10,897,788	12,620,010	601,423	(1,027,698)	0	16,988	118,709	(278,498)
Windsor	0	3,324,260	4,012,040	183,255	(326,717)	0	5,640	36,211	(101,611)
Price River Coal	0	421,145	509,275	23,216	(41,472)	0	1,124	4,588	(12,544)
Houston Pipeline (HPL)	0	1,099,011	2,405,864	60,585	(195,919)	0	4,574	11,972	(118,788)
<b>Total</b>	<b>\$74,028,096</b>	<b>\$2,997,063,353</b>	<b>\$3,002,105,003</b>	<b>\$169,298,435</b>	<b>(\$244,473,520)</b>	<b>\$0</b>	<b>\$3,949,256</b>	<b>\$32,646,941</b>	<b>\$35,449,208</b>







AMERICAN ELECTRIC POWER  
EAST RETIREMENT PLAN  
ESTIMATED 2009 NET PERIODIC PENSION COST

Location	Service Cost	Projected Benefit Obligation	Market-Related Value of Assets	Interest Cost	Expected Return on Assets	Initial Transition (Asset)/ Obligation	Prior Service Cost	Gain/Loss Amortization	Net Periodic Pension Cost
AEP Energy Services, Inc.	\$21,335	\$1,502,455	\$1,311,515	\$83,786	(\$106,745)	\$0	\$3,299	\$6,308	\$7,983
AEP Pro Serv, Inc.	0	138,052	163,310	7,591	(13,292)	0	78	580	(5,043)
AEP T & D Services, LLC	0	0	0	0	0	0	0	0	0
American Electric Power Service Corporation	28,689,415	897,085,798	891,789,543	50,903,950	(72,583,248)	0	1,124,179	3,766,553	11,900,851
Appalachian Power Co - Distribution	5,870,836	294,940,592	322,660,278	16,540,181	(26,261,500)	0	405,895	1,238,354	(2,206,234)
Appalachian Power Co - Generation	5,892,987	225,469,352	237,080,784	12,721,508	(19,296,137)	0	287,916	946,668	552,942
Appalachian Power Co - Transmission	1,091,791	40,560,238	42,728,906	2,290,246	(3,477,729)	0	48,020	170,298	122,625
C3 Communications, Inc.	0	13,950	34,485	767	(2,807)	0	128	59	(1,853)
Cardinal Operating Company	1,393,883	59,617,040	62,957,511	3,354,699	(5,124,147)	0	74,027	250,311	(51,227)
AEP Texas Central Company - Distribution	426,763	2,895,035	1,920,071	182,650	(156,276)	0	8,690	12,155	473,982
AEP Texas Central Company - Generation	0	0	0	0	0	0	0	0	0
AEP Texas Central Company - Nuclear	0	0	0	0	0	0	0	0	0
AEP Texas Central Company - Transmission	62,751	552,419	315,333	33,825	(25,665)	0	1,127	2,319	74,358
Columbus Southern Power Co - Distribution	3,306,189	214,601,341	240,114,167	11,981,693	(19,543,026)	0	319,868	901,037	(3,034,238)
Columbus Southern Power Co - Generation	1,926,996	97,110,388	107,296,387	5,445,592	(8,732,913)	0	135,228	407,733	(817,364)
Columbus Southern Power Co - Transmission	321,121	22,631,059	26,140,837	1,262,031	(2,127,617)	0	32,550	95,020	(416,896)
Conesville Coal Preparation Company	97,393	2,726,089	2,985,098	155,250	(242,959)	0	3,218	11,446	24,348
Cook Coal Terminal	71,527	2,725,010	2,860,812	153,768	(232,843)	0	3,208	11,441	7,102
CSW Energy, Inc.	49,301	238,255	278,348	15,811	(22,655)	0	776	1,000	44,235
Elmwood	249,878	1,228,843	894,585	81,308	(72,811)	0	3,624	5,159	267,158
EnerShop Inc.	0	0	0	0	0	0	0	0	0
Indiana Michigan Power Co - Distribution	3,450,934	162,644,954	176,248,695	9,132,818	(14,344,979)	0	215,134	682,890	(863,203)
Indiana Michigan Power Co - Generation	2,395,740	88,559,824	94,731,461	5,001,211	(7,710,246)	0	112,198	371,832	170,735
Indiana Michigan Power Co - Nuclear	6,678,786	149,225,007	149,169,126	8,572,404	(12,140,958)	0	183,558	626,544	3,920,333
Indiana Michigan Power Co - Transmission	817,615	32,194,030	34,222,137	1,815,152	(2,785,359)	0	40,801	135,172	23,381
Kentucky Power Co - Distribution	1,486,720	58,948,831	63,505,022	3,323,062	(5,168,709)	0	70,801	247,506	(40,621)
Kentucky Power Co - Generation	804,660	28,273,086	30,277,899	1,598,846	(2,464,335)	0	35,453	118,709	93,333
Kentucky Power Co - Transmission	291,865	6,362,470	6,439,188	365,890	(524,089)	0	7,178	26,714	167,558
Kingsport Power Co - Distribution	232,605	11,916,523	12,789,913	668,022	(1,040,978)	0	15,997	50,033	(74,321)
Kingsport Power Co - Transmission	66,403	2,692,971	2,774,093	151,725	(225,785)	0	3,089	11,307	6,738
Memco	1,537,451	7,751,895	4,940,301	510,777	(402,094)	0	18,618	32,548	1,697,300
Ohio Power Co - Distribution	4,277,035	216,111,310	237,452,095	12,118,101	(19,326,358)	0	310,627	907,377	(1,713,219)
Ohio Power Co - Generation	4,403,032	197,643,943	211,928,254	11,109,597	(17,248,959)	0	266,538	829,839	(639,953)
Ohio Power Co - Transmission	1,186,289	48,186,197	51,877,393	2,714,757	(4,222,330)	0	65,228	202,317	(53,739)
Public Service Co of Oklahoma - Distribution	522,116	2,863,525	1,788,718	186,160	(145,585)	0	9,727	12,023	584,442
Public Service Co of Oklahoma - Generation	146,486	785,643	474,591	51,253	(38,627)	0	1,952	3,299	164,363
Public Service Co of Oklahoma - Transmission	42,943	623,298	590,341	36,633	(48,048)	0	1,462	2,617	35,607
Southwestern Electric Power Co - Distribution	319,634	1,766,615	1,047,297	114,713	(85,240)	0	6,056	7,417	362,580
Southwestern Electric Power Co - Generation	256,762	1,568,698	1,006,372	100,373	(81,909)	0	6,405	6,586	288,218
Southwestern Electric Power Co - Texas - Distribution	119,230	2,359,676	1,047,448	136,303	(85,252)	0	2,292	9,907	182,480
Southwestern Electric Power Co - Texas - Transmission	0	0	0	0	0	0	0	0	0
Southwestern Electric Power Co - Transmission	66,711	479,953	353,669	30,058	(28,785)	0	1,072	2,015	71,071
Water Transportation (Blackhawk)	1,062,062	26,338,942	26,691,637	1,506,650	(2,172,447)	0	39,757	110,588	546,610
AEP Texas North Company - Distribution	93,337	469,594	289,025	30,953	(23,524)	0	1,404	1,972	104,141
AEP Texas North Company - Generation	0	0	0	0	0	0	0	0	0
AEP Texas North Company - Transmission	17,177	82,508	37,418	5,481	(3,045)	0	32	346	19,991
Wheeling Power Co - Distribution	296,256	14,727,391	16,795,073	826,078	(1,366,960)	0	21,515	61,835	(161,277)
Wheeling Power Co - Transmission	0	1,088,634	1,368,451	59,859	(111,379)	0	1,872	4,571	(45,077)
Cedar Coal Co	11,709	3,845,337	4,750,017	212,081	(386,607)	0	8,980	16,145	(137,692)
Central Coal Company	0	0	0	0	0	0	0	0	0
Central Ohio Coal	0	9,465,862	11,402,670	520,482	(928,070)	0	13,405	39,744	(354,438)
Southern Ohio Coal - Martinka	0	6,351,956	7,902,159	349,264	(643,161)	0	7,950	26,670	(259,278)
Southern Ohio Coal - Meigs	13,066	10,773,665	13,089,151	593,111	(1,065,333)	0	16,988	45,235	(396,934)
Windsor	0	3,286,397	4,161,185	180,703	(338,681)	0	5,640	13,798	(138,539)
Price River Coal	0	416,348	528,207	22,893	(42,991)	0	1,124	1,748	(17,226)
Houston Pipeline (HPL)	0	1,086,494	2,495,301	59,741	(203,094)	0	4,574	4,562	(134,217)
Total	\$80,068,789	\$2,962,927,492	\$3,113,706,277	\$167,319,809	(\$253,426,288)	\$0	\$3,949,256	\$12,440,309	\$10,351,876



AMERICAN ELECTRIC POWER  
 EAST RETIREMENT PLAN  
 ESTIMATED 2011 NET PERIODIC PENSION COST

Location	Service Cost	Projected Benefit Obligation	Market-Related Value of Assets	Interest Cost	Expected Return on Assets	Initial Transition (Asset)/ Obligation	Prior Service Cost	Gain/Loss Amortization	Net Periodic Pension Cost
AEP Energy Services, Inc.	\$18,194	\$1,478,822	\$1,314,611	\$82,237	(\$107,005)	\$0	\$3,299	\$2,913	(\$361)
AEP Pro Serv, Inc.	0	135,880	163,696	7,464	(13,324)	0	\$78	268	(5,514)
AEP T & D Services, LLC	0	0	0	0	0	0	\$0	0	0
American Electric Power Service Corporation	24,466,333	882,974,988	893,894,823	49,849,605	(72,759,973)	0	\$1,124,179	1,739,464	4,419,608
Appalachian Power Co - Distribution	5,006,649	290,301,292	323,421,993	16,222,519	(26,325,441)	0	\$405,895	571,895	(4,118,484)
Appalachian Power Co - Generation	5,025,540	221,922,807	237,640,469	12,467,236	(19,343,119)	0	\$287,916	437,189	(1,125,239)
Appalachian Power Co - Transmission	931,079	39,922,241	42,829,778	2,244,246	(3,486,197)	0	\$48,020	78,647	(184,205)
C3 Communications, Inc.	0	13,731	34,567	754	(2,814)	0	\$128	27	(1,904)
Cardinal Operating Company	1,188,703	58,679,287	63,106,137	3,288,803	(5,136,623)	0	\$74,027	115,598	(469,492)
AEP Texas Central Company - Distribution	363,943	2,849,498	1,924,604	176,528	(156,656)	0	\$8,690	5,614	398,118
AEP Texas Central Company - Generation	0	0	0	0	0	0	\$0	0	0
AEP Texas Central Company - Nuclear	0	0	0	0	0	0	\$0	0	0
AEP Texas Central Company - Transmission	53,514	543,729	316,078	32,809	(25,728)	0	\$1,127	1,071	62,794
Columbus Southern Power Co - Distribution	2,819,518	211,225,745	240,681,014	11,758,415	(19,590,609)	0	\$319,868	416,116	(4,276,692)
Columbus Southern Power Co - Generation	1,643,342	95,582,880	107,549,686	5,341,049	(8,754,176)	0	\$135,228	188,299	(1,446,258)
Columbus Southern Power Co - Transmission	273,852	22,275,081	26,202,549	1,238,709	(2,132,798)	0	\$32,550	43,882	(543,805)
Conesville Coal Preparation Company	83,056	2,683,208	2,992,145	151,963	(243,550)	0	\$3,218	5,286	(27)
Cook Coal Terminal	60,998	2,682,147	2,867,565	150,693	(233,410)	0	\$3,208	5,284	(13,227)
CSW Energy, Inc.	42,044	234,507	279,005	15,192	(22,710)	0	\$776	462	35,765
Elmwood	213,096	1,209,513	896,697	78,150	(72,988)	0	\$3,624	2,383	224,265
EnerShop Inc.	0	0	0	0	0	0	\$0	0	0
Indiana Michigan Power Co - Distribution	2,942,956	160,086,612	176,664,772	8,955,906	(14,379,907)	0	\$215,134	315,371	(1,950,539)
Indiana Michigan Power Co - Generation	2,043,087	87,166,813	94,955,097	4,900,679	(7,729,019)	0	\$112,198	171,719	(501,337)
Indiana Michigan Power Co - Nuclear	5,695,669	146,877,756	149,521,275	8,381,506	(12,170,519)	0	\$183,558	289,350	2,379,563
Indiana Michigan Power Co - Transmission	697,262	31,687,630	34,302,927	1,779,040	(2,792,141)	0	\$40,801	62,425	(212,613)
Kentucky Power Co - Distribution	1,267,875	58,021,589	63,654,941	3,257,022	(5,181,294)	0	\$70,801	114,303	(471,294)
Kentucky Power Co - Generation	686,214	27,828,361	30,349,377	1,566,427	(2,470,335)	0	\$35,453	54,822	(127,420)
Kentucky Power Co - Transmission	248,903	6,262,391	6,454,389	357,693	(525,365)	0	\$7,178	12,337	100,746
Kingsport Power Co - Distribution	198,365	11,729,081	12,820,107	655,225	(1,043,513)	0	\$15,997	23,106	(150,819)
Kingsport Power Co - Transmission	56,628	2,650,612	2,780,642	148,720	(226,335)	0	\$3,089	5,222	(12,676)
Memco	1,311,138	7,629,961	4,951,964	491,173	(403,073)	0	\$18,618	15,031	1,432,888
Ohio Power Co - Distribution	3,647,455	212,711,963	238,012,657	11,885,541	(19,373,414)	0	\$310,627	419,043	(3,110,747)
Ohio Power Co - Generation	3,754,906	194,535,081	212,428,561	10,892,911	(17,290,956)	0	\$266,538	383,235	(1,993,366)
Ohio Power Co - Transmission	1,011,667	47,428,247	51,999,862	2,661,010	(4,232,610)	0	\$65,228	93,434	(401,271)
Public Service Co of Oklahoma - Distribution	445,261	2,818,483	1,792,941	179,291	(145,939)	0	\$9,727	5,552	493,892
Public Service Co of Oklahoma - Generation	124,924	773,285	475,711	49,342	(38,721)	0	\$1,952	1,523	139,020
Public Service Co of Oklahoma - Transmission	36,622	613,494	591,735	35,714	(48,165)	0	\$1,462	1,209	26,840
Southwestern Electric Power Co - Distribution	272,584	1,738,827	1,049,769	110,495	(85,448)	0	\$6,056	3,425	307,113
Southwestern Electric Power Co - Generation	218,967	1,544,023	1,008,748	96,849	(82,109)	0	\$6,405	3,042	243,154
Southwestern Electric Power Co - Texas - Distribution	101,679	2,322,559	1,049,921	133,174	(85,460)	0	\$2,292	4,575	156,260
Southwestern Electric Power Co - Texas - Transmission	0	0	0	0	0	0	\$0	0	0
Southwestern Electric Power Co - Transmission	56,891	472,404	354,504	29,076	(28,855)	0	\$1,072	931	59,114
Water Transportation (Blackhawk)	905,726	25,924,641	26,754,649	1,473,906	(2,177,737)	0	\$39,757	51,072	292,724
AEP Texas North Company - Distribution	79,598	462,207	289,708	29,764	(23,581)	0	\$1,404	911	88,094
AEP Texas North Company - Generation	0	0	0	0	0	0	\$0	0	0
AEP Texas North Company - Transmission	14,648	81,211	37,507	5,266	(3,053)	0	\$32	160	17,054
Wheeling Power Co - Distribution	252,647	14,495,735	16,834,722	810,191	(1,370,289)	0	\$21,515	28,557	(257,379)
Wheeling Power Co - Transmission	0	1,071,510	1,371,681	58,863	(111,650)	0	\$1,872	2,111	(48,805)
Cedar Coal Co	9,986	3,784,851	4,761,231	208,467	(387,548)	0	\$8,980	7,456	(152,660)
Central Coal Company	0	0	0	0	0	0	\$0	0	0
Central Ohio Coal	0	9,316,968	11,429,588	511,821	(930,329)	0	\$13,405	18,354	(386,749)
Southern Ohio Coal - Martinka	0	6,252,042	7,920,814	343,451	(644,727)	0	\$7,950	12,317	(281,010)
Southern Ohio Coal - Meigs	11,142	10,604,199	13,120,051	583,146	(1,067,927)	0	\$16,988	20,890	(435,761)
Windsor	0	3,234,704	4,171,008	177,696	(339,506)	0	\$5,640	6,372	(149,797)
Price River Coal	0	409,799	529,454	22,512	(43,096)	0	\$1,124	807	(18,652)
Houston Pipeline (HPL)	0	1,069,403	2,501,192	58,747	(203,588)	0	\$4,574	2,107	(138,161)
<b>Total</b>	<b>\$68,282,663</b>	<b>\$2,916,321,798</b>	<b>\$3,121,056,917</b>	<b>\$163,956,995</b>	<b>(\$254,043,331)</b>	<b>\$0</b>	<b>\$3,949,256</b>	<b>\$5,745,165</b>	<b>(\$12,109,252)</b>

AMERICAN ELECTRIC POWER  
EAST RETIREMENT PLAN  
ESTIMATED 2012 NET PERIODIC PENSION COST

Location	Service Cost	Projected Benefit Obligation	Market-Related Value of Assets	Interest Cost	Expected Return on Assets	Initial Transition (Asset)/ Obligation	Prior Service Cost	Gain/Loss Amortization	Net Periodic Pension Cost
AEP Energy Services, Inc.	\$20,195	\$1,459,261	\$1,307,398	\$81,229	(\$106,387)	\$0	\$1,331	\$2,725	(\$906)
AEP Pro Serv, Inc.	0	134,083	162,797	7,362	(13,247)	0	32	250	(5,604)
AEP T & D Services, LLC	0	0	0	0	0	0	0	0	0
American Electric Power Service Corporation	27,157,630	871,295,180	888,990,153	49,329,227	(72,339,821)	0	516,125	1,627,271	6,290,431
Appalachian Power Co - Distribution	5,557,380	286,461,247	321,647,424	16,033,177	(26,173,425)	0	166,387	535,008	(3,881,472)
Appalachian Power Co - Generation	5,578,349	218,987,258	236,336,570	12,329,694	(19,231,422)	0	119,791	408,991	(794,599)
Appalachian Power Co - Transmission	1,033,498	39,394,158	42,594,777	2,219,666	(3,466,066)	0	19,666	73,574	(119,662)
C3 Communications, Inc.	0	13,549	34,377	744	(2,797)	0	52	25	(1,977)
Cardinal Operating Company	1,319,461	57,903,090	62,759,883	3,251,593	(5,106,962)	0	30,415	108,142	(397,350)
AEP Texas Central Company - Distribution	403,977	2,811,805	1,914,044	176,561	(155,752)	0	7,855	5,251	437,893
AEP Texas Central Company - Generation	0	0	0	0	0	0	0	0	0
AEP Texas Central Company - Nuclear	0	0	0	0	0	0	0	0	0
AEP Texas Central Company - Transmission	59,401	536,537	314,343	32,720	(25,579)	0	936	1,002	68,480
Columbus Southern Power Co - Distribution	3,129,665	208,431,696	239,360,432	11,615,700	(19,477,483)	0	134,197	389,277	(4,208,644)
Columbus Southern Power Co - Generation	1,824,110	94,318,529	106,959,576	5,278,677	(8,703,625)	0	56,246	176,154	(1,368,438)
Columbus Southern Power Co - Transmission	303,975	21,980,431	26,058,779	1,223,517	(2,120,482)	0	13,668	41,052	(538,269)
Conesville Coal Preparation Company	92,193	2,647,716	2,975,727	150,434	(242,144)	0	1,299	4,945	6,726
Cook Coal Terminal	67,708	2,646,668	2,851,831	149,032	(232,062)	0	1,305	4,943	(9,074)
CSW Energy, Inc.	46,669	231,405	277,474	15,268	(22,579)	0	733	432	40,523
Elmwood	236,536	1,193,514	891,777	78,516	(72,567)	0	3,115	2,229	247,830
EnerShop Inc.	0	0	0	0	0	0	0	0	0
Indiana Michigan Power Co - Distribution	3,266,681	157,969,020	175,695,438	8,852,588	(14,296,870)	0	90,723	295,030	(1,791,848)
Indiana Michigan Power Co - Generation	2,267,826	86,013,788	94,434,092	4,847,070	(7,684,388)	0	46,622	160,643	(362,227)
Indiana Michigan Power Co - Nuclear	6,322,192	144,934,888	148,700,874	8,304,715	(12,100,240)	0	81,958	270,687	2,879,313
Indiana Michigan Power Co - Transmission	773,961	31,268,473	34,114,712	1,759,278	(2,776,017)	0	16,997	58,398	(167,383)
Kentucky Power Co - Distribution	1,407,341	57,254,091	63,305,675	3,220,785	(5,151,375)	0	29,097	106,930	(387,222)
Kentucky Power Co - Generation	761,697	27,460,254	30,182,855	1,549,516	(2,456,070)	0	14,902	51,286	(78,669)
Kentucky Power Co - Transmission	276,282	6,179,553	6,418,975	354,455	(522,331)	0	3,160	11,541	(123,107)
Kingsport Power Co - Distribution	220,185	11,573,931	12,749,765	647,552	(1,037,487)	0	6,593	21,616	(141,541)
Kingsport Power Co - Transmission	62,857	2,615,550	2,765,385	147,057	(225,028)	0	1,299	4,885	(8,930)
Memco	1,455,364	7,529,034	4,924,793	493,285	(400,745)	0	16,917	14,062	1,578,882
Ohio Power Co - Distribution	4,048,675	209,898,254	236,706,716	11,746,679	(19,261,542)	0	130,218	392,016	(2,943,955)
Ohio Power Co - Generation	4,167,946	191,961,811	211,262,996	10,768,434	(17,191,110)	0	111,633	358,517	(1,784,581)
Ohio Power Co - Transmission	1,122,951	46,800,876	51,714,546	2,631,240	(4,208,169)	0	27,734	87,407	(338,837)
Public Service Co of Oklahoma - Distribution	494,240	2,781,201	1,783,103	179,837	(145,096)	0	9,061	5,194	543,235
Public Service Co of Oklahoma - Generation	138,665	763,056	473,101	49,509	(38,498)	0	1,753	1,425	152,854
Public Service Co of Oklahoma - Transmission	40,650	605,379	588,488	35,470	(47,887)	0	1,167	1,131	30,531
Southwestern Electric Power Co - Distribution	302,569	1,715,826	1,044,010	110,819	(84,954)	0	5,880	3,205	337,518
Southwestern Electric Power Co - Generation	243,053	1,523,599	1,003,213	96,997	(81,634)	0	6,086	2,846	267,348
Southwestern Electric Power Co - Texas - Distribution	112,864	2,291,837	1,044,160	132,029	(84,966)	0	1,806	4,280	166,013
Southwestern Electric Power Co - Texas - Transmission	0	0	0	0	0	0	0	0	0
Southwestern Electric Power Co - Transmission	63,149	466,155	352,559	29,061	(28,689)	0	936	871	65,328
Water Transportation (Blackhawk)	1,005,356	25,581,715	26,607,850	1,459,754	(2,165,161)	0	19,016	47,778	366,742
AEP Texas North Company - Distribution	88,353	456,093	288,118	29,893	(23,445)	0	1,248	852	96,900
AEP Texas North Company - Generation	0	0	0	0	0	0	0	0	0
AEP Texas North Company - Transmission	16,260	80,136	37,301	5,293	(3,035)	0	24	150	18,690
Wheeling Power Co - Distribution	280,438	14,303,988	16,742,352	800,753	(1,362,376)	0	9,031	26,715	(245,440)
Wheeling Power Co - Transmission	0	1,057,336	1,364,155	58,053	(111,005)	0	755	1,975	(50,223)
Cedar Coal Co	11,084	3,734,786	4,735,106	205,666	(385,310)	0	3,623	6,975	(157,962)
Central Coal Company	0	0	0	0	0	0	0	0	0
Central Ohio Coal	0	9,193,725	11,366,876	504,778	(924,957)	0	5,409	17,171	(397,600)
Southern Ohio Coal - Martinka	0	6,169,342	7,877,354	338,725	(641,004)	0	3,207	11,522	(287,549)
Southern Ohio Coal - Meigs	12,368	10,463,929	13,048,063	575,197	(1,061,760)	0	6,854	19,543	(447,798)
Windsor	0	3,191,916	4,148,123	175,251	(337,545)	0	2,276	5,961	(154,057)
Price River Coal	0	404,379	526,549	22,202	(42,847)	0	454	755	(19,436)
Houston Pipeline (HPL)	0	1,055,258	2,487,468	57,939	(202,413)	0	1,846	1,971	(140,658)
Total	\$75,793,756	\$2,877,745,304	\$3,103,932,134	\$162,162,996	(\$252,576,358)	\$0	\$1,731,433	\$5,374,609	(\$7,513,567)

AMERICAN ELECTRIC POWER  
EAST RETIREMENT PLAN  
ESTIMATED 2013 NET PERIODIC PENSION COST

Location	Service Cost	Projected Benefit Obligation	Market-Related Value of Assets	Interest Cost	Expected Return on Assets	Initial Transition (Asset)/ Obligation	Prior Service Cost	Gain/Loss Amortization	Net Periodic Pension Cost
AEP Energy Services, Inc.	\$21,003	\$1,442,459	\$1,299,452	\$80,375	(\$105,790)	\$0	\$94	\$2,565	(\$1,752)
AEP Pro Serv, Inc.	0	132,539	161,808	7,279	(13,173)	0	2	236	(5,656)
AEP T & D Services, LLC	0	0	0	0	0	0	0	0	0
American Electric Power Service Corporation	28,243,935	861,263,470	883,586,840	48,852,988	(71,934,006)	0	133,860	1,531,691	6,828,468
Appalachian Power Co - Distribution	5,779,676	283,163,058	319,692,440	15,869,138	(26,026,596)	0	15,816	503,584	(3,858,382)
Appalachian Power Co - Generation	5,801,483	216,465,935	234,900,108	12,207,237	(19,123,537)	0	14,096	384,968	(715,754)
Appalachian Power Co - Transmission	1,074,838	38,940,591	42,335,884	2,197,703	(3,446,622)	0	1,841	69,253	(102,987)
C3 Communications, Inc.	0	13,393	34,168	736	(2,782)	0	4	24	(2,019)
Cardinal Operating Company	1,372,239	57,236,419	62,378,427	3,218,869	(5,078,313)	0	2,999	101,791	(382,415)
AEP Texas Central Company - Distribution	420,136	2,779,431	1,902,410	175,725	(154,878)	0	7,330	4,943	453,256
AEP Texas Central Company - Generation	0	0	0	0	0	0	0	0	0
AEP Texas Central Company - Nuclear	0	0	0	0	0	0	0	0	0
AEP Texas Central Company - Transmission	61,777	530,359	312,433	32,521	(25,436)	0	816	943	70,621
Columbus Southern Power Co - Distribution	3,254,852	206,031,905	237,905,591	11,494,321	(19,368,218)	0	17,472	366,412	(4,235,161)
Columbus Southern Power Co - Generation	1,897,074	93,232,587	106,309,472	5,224,654	(8,654,799)	0	6,593	165,807	(1,360,671)
Columbus Southern Power Co - Transmission	316,134	21,727,358	25,900,393	1,210,659	(2,108,586)	0	1,798	38,640	(541,354)
Conesville Coal Preparation Company	95,880	2,617,231	2,957,641	149,008	(240,786)	0	92	4,655	8,849
Cook Coal Terminal	70,417	2,616,195	2,834,498	147,552	(230,760)	0	108	4,653	(8,031)
CSW Energy, Inc.	48,536	228,741	275,787	15,228	(22,452)	0	706	407	42,425
Elmwood	245,998	1,179,773	886,357	78,305	(72,160)	0	2,794	2,098	257,036
EnerShop Inc.	0	0	0	0	0	0	0	0	0
Indiana Michigan Power Co - Distribution	3,397,348	156,150,234	174,627,555	8,762,576	(14,216,667)	0	12,509	277,701	(1,766,532)
Indiana Michigan Power Co - Generation	2,358,539	85,023,463	93,860,119	4,799,142	(7,641,280)	0	5,396	151,208	(326,996)
Indiana Michigan Power Co - Nuclear	6,575,080	143,266,171	147,797,065	8,229,491	(12,032,360)	0	18,086	254,788	3,045,084
Indiana Michigan Power Co - Transmission	804,919	30,908,462	33,907,361	1,741,743	(2,760,444)	0	2,032	54,968	(156,782)
Kentucky Power Co - Distribution	1,463,634	56,594,893	62,920,901	3,188,655	(5,122,476)	0	2,879	100,650	(366,658)
Kentucky Power Co - Generation	792,165	27,144,088	29,999,402	1,534,298	(2,442,292)	0	1,981	48,274	(65,574)
Kentucky Power Co - Transmission	287,333	6,108,405	6,379,960	351,263	(519,401)	0	634	10,863	130,692
Kingsport Power Co - Distribution	228,993	11,440,674	12,672,271	640,914	(1,031,667)	0	681	20,346	(140,733)
Kingsport Power Co - Transmission	65,372	2,585,436	2,748,577	145,586	(223,765)	0	173	4,598	(8,036)
Memco	1,513,578	7,442,348	4,894,860	491,872	(398,497)	0	15,847	13,236	1,636,036
Ohio Power Co - Distribution	4,210,622	207,481,577	235,268,005	11,626,431	(19,153,488)	0	16,801	368,990	(2,930,644)
Ohio Power Co - Generation	4,334,664	189,751,648	209,978,933	10,659,491	(17,094,670)	0	14,249	337,459	(1,748,808)
Ohio Power Co - Transmission	1,167,869	46,262,032	51,400,224	2,604,916	(4,184,562)	0	4,163	82,273	(325,341)
Public Service Co of Oklahoma - Distribution	514,009	2,749,179	1,772,265	179,219	(144,283)	0	8,643	4,889	562,477
Public Service Co of Oklahoma - Generation	144,212	754,270	470,225	49,346	(38,282)	0	1,628	1,341	158,245
Public Service Co of Oklahoma - Transmission	42,276	598,409	584,911	35,187	(47,618)	0	982	1,064	31,891
Southwestern Electric Power Co - Distribution	314,671	1,696,071	1,037,664	110,433	(84,478)	0	5,770	3,016	349,413
Southwestern Electric Power Co - Generation	252,775	1,506,057	997,115	96,598	(81,176)	0	5,885	2,678	276,760
Southwestern Electric Power Co - Texas - Distribution	117,379	2,265,450	1,037,813	130,868	(84,490)	0	1,500	4,029	169,286
Southwestern Electric Power Co - Texas - Transmission	0	0	0	0	0	0	0	0	0
Southwestern Electric Power Co - Transmission	65,675	460,788	350,416	28,914	(28,528)	0	850	819	67,731
Water Transportation (Blackhawk)	1,045,571	25,287,179	26,446,127	1,446,231	(2,153,015)	0	5,977	44,971	389,735
AEP Texas North Company - Distribution	91,887	450,842	286,367	29,807	(23,314)	0	1,149	802	100,333
AEP Texas North Company - Generation	0	0	0	0	0	0	0	0	0
AEP Texas North Company - Transmission	16,910	79,214	37,074	5,279	(3,018)	0	18	141	19,330
Wheeling Power Co - Distribution	291,655	14,139,298	16,640,592	792,568	(1,354,733)	0	1,183	25,146	(244,181)
Wheeling Power Co - Transmission	0	1,045,163	1,355,864	57,402	(110,383)	0	53	1,859	(51,069)
Cedar Coal Co	11,528	3,691,785	4,706,326	203,391	(383,148)	0	256	6,566	(161,409)
Central Coal Company	0	0	0	0	0	0	0	0	0
Central Ohio Coal	0	9,087,872	11,297,788	499,119	(919,768)	0	382	16,162	(404,106)
Southern Ohio Coal - Martinka	0	6,098,311	7,829,475	334,928	(637,408)	0	226	10,845	(291,409)
Southern Ohio Coal - Meigs	12,863	10,343,452	12,968,756	568,783	(1,055,804)	0	483	18,395	(455,280)
Windsor	0	3,155,165	4,122,910	173,286	(335,652)	0	161	5,611	(156,594)
Price River Coal	0	399,723	523,349	21,953	(42,607)	0	32	711	(19,910)
Houston Pipeline (HPL)	0	1,043,108	2,472,349	57,289	(201,277)	0	130	1,855	(142,003)
Total	\$78,825,506	\$2,844,612,210	\$3,085,066,328	\$160,559,279	(\$251,159,444)	\$0	\$337,159	\$5,058,923	(\$6,378,579)

AMERICAN ELECTRIC POWER  
EAST RETIREMENT PLAN  
ESTIMATED 2014 NET PERIODIC PENSION COST

Location	Service Cost	Projected Benefit Obligation	Market-Related Value of Assets	Interest Cost	Expected Return on Assets	Initial Transition (Asset)/ Obligation	Prior Service Cost	Gain/Loss Amortization	Net Periodic Pension Cost
AEP Energy Services, Inc.	\$21,843	\$1,428,662	\$1,292,804	\$79,613	(\$105,200)	\$0	\$94	\$2,405	(\$1,245)
AEP Pro Serv, Inc.	0	131,271	160,980	7,205	(13,100)	0	2	221	(5,671)
AEP T & D Services, LLC	0	0	0	0	0	0	0	0	0
American Electric Power Service Corporation	29,373,692	853,025,152	879,066,859	48,431,545	(71,533,012)	0	133,860	1,436,154	7,842,239
Appalachian Power Co - Distribution	6,010,863	280,454,494	318,057,056	15,723,003	(25,881,512)	0	15,816	472,173	(3,659,656)
Appalachian Power Co - Generation	6,033,542	214,395,355	233,698,479	12,098,511	(19,016,934)	0	14,096	360,956	(509,829)
Appalachian Power Co - Transmission	1,117,831	38,568,109	42,119,315	2,178,212	(3,427,409)	0	1,841	64,933	(64,592)
C3 Communications, Inc.	0	13,265	33,993	728	(2,766)	0	4	22	(2,012)
Cardinal Operating Company	1,427,129	56,688,930	62,059,330	3,189,771	(5,050,004)	0	2,999	95,442	(334,664)
AEP Texas Central Company - Distribution	436,941	2,752,845	1,892,679	175,075	(154,014)	0	7,330	4,635	469,967
AEP Texas Central Company - Generation	0	0	0	0	0	0	0	0	0
AEP Texas Central Company - Nuclear	0	0	0	0	0	0	0	0	0
AEP Texas Central Company - Transmission	64,248	525,286	310,835	32,357	(25,294)	0	816	884	73,012
Columbus Southern Power Co - Distribution	3,385,046	204,061,130	236,688,587	11,385,938	(19,260,250)	0	17,472	343,557	(4,128,236)
Columbus Southern Power Co - Generation	1,972,957	92,340,781	105,765,647	5,176,525	(8,606,553)	0	6,593	155,465	(1,295,012)
Columbus Southern Power Co - Transmission	328,780	21,519,527	25,767,900	1,199,171	(2,096,832)	0	1,798	36,230	(530,853)
Conesville Coal Preparation Company	99,716	2,592,196	2,942,511	147,749	(239,443)	0	92	4,364	12,477
Cook Coal Terminal	73,233	2,591,170	2,819,998	146,239	(229,474)	0	108	4,362	(5,531)
CSW Energy, Inc.	50,477	226,553	274,377	15,205	(22,327)	0	706	381	44,443
Elmwood	255,838	1,168,488	881,823	78,176	(71,757)	0	2,794	1,967	267,018
EnerShop Inc.	0	0	0	0	0	0	0	0	0
Indiana Michigan Power Co - Distribution	3,533,242	154,656,597	173,734,249	8,682,444	(14,137,416)	0	12,509	260,380	(1,648,841)
Indiana Michigan Power Co - Generation	2,452,881	84,210,181	93,379,978	4,756,609	(7,598,684)	0	5,396	141,776	(242,022)
Indiana Michigan Power Co - Nuclear	6,838,083	141,895,775	147,041,010	8,163,441	(11,965,286)	0	18,086	238,896	3,293,220
Indiana Michigan Power Co - Transmission	837,116	30,612,810	33,733,909	1,726,168	(2,745,056)	0	2,032	51,540	(128,201)
Kentucky Power Co - Distribution	1,522,180	56,053,541	62,599,030	3,160,114	(5,093,921)	0	2,879	94,372	(314,377)
Kentucky Power Co - Generation	823,852	26,884,445	29,845,940	1,520,804	(2,428,678)	0	1,981	45,263	(36,778)
Kentucky Power Co - Transmission	298,827	6,049,975	6,347,323	348,462	(516,506)	0	634	10,186	141,602
Kingsport Power Co - Distribution	238,152	11,331,239	12,607,447	635,000	(1,025,916)	0	681	19,077	(133,005)
Kingsport Power Co - Transmission	67,986	2,560,705	2,734,516	144,279	(222,518)	0	173	4,311	(5,768)
Memco	1,574,121	7,371,159	4,869,820	490,973	(396,276)	0	15,847	12,410	1,697,075
Ohio Power Co - Distribution	4,379,047	205,496,936	234,064,493	11,519,301	(19,046,718)	0	16,801	345,975	(2,785,594)
Ohio Power Co - Generation	4,508,050	187,936,600	208,904,787	10,562,561	(16,999,377)	0	14,249	316,410	(1,598,106)
Ohio Power Co - Transmission	1,214,584	45,819,517	51,137,286	2,581,524	(4,161,235)	0	4,163	77,142	(283,823)
Public Service Co of Oklahoma - Distribution	534,570	2,722,882	1,763,199	178,789	(143,478)	0	8,643	4,584	583,108
Public Service Co of Oklahoma - Generation	149,980	747,056	467,820	49,235	(38,068)	0	1,628	1,258	164,032
Public Service Co of Oklahoma - Transmission	43,967	592,685	581,919	34,943	(47,353)	0	982	998	33,537
Southwestern Electric Power Co - Distribution	327,258	1,679,847	1,032,356	110,162	(84,007)	0	5,770	2,828	362,012
Southwestern Electric Power Co - Generation	262,886	1,491,651	992,014	96,300	(80,724)	0	5,885	2,511	286,859
Southwestern Electric Power Co - Texas - Distribution	122,074	2,243,780	1,032,504	129,853	(84,019)	0	1,500	3,778	173,186
Southwestern Electric Power Co - Texas - Transmission	0	0	0	0	0	0	0	0	0
Southwestern Electric Power Co - Transmission	68,302	456,380	348,623	28,798	(28,369)	0	850	768	70,350
Water Transportation (Blackhawk)	1,087,393	25,045,297	26,310,842	1,434,325	(2,141,013)	0	5,977	42,166	428,848
AEP Texas North Company - Distribution	95,563	446,530	284,902	29,753	(23,184)	0	1,149	752	104,034
AEP Texas North Company - Generation	0	0	0	0	0	0	0	0	0
AEP Texas North Company - Transmission	17,587	78,456	36,884	5,271	(3,001)	0	18	132	20,007
Wheeling Power Co - Distribution	303,322	14,004,051	16,555,467	785,278	(1,347,181)	0	1,183	23,577	(233,822)
Wheeling Power Co - Transmission	0	1,035,165	1,348,928	56,816	(109,767)	0	53	1,743	(51,155)
Cedar Coal Co	11,989	3,656,472	4,682,251	201,348	(381,013)	0	256	6,156	(161,264)
Central Coal Company	0	0	0	0	0	0	0	0	0
Central Ohio Coal	0	9,000,943	11,239,994	494,028	(914,641)	0	382	15,154	(405,078)
Southern Ohio Coal - Martinka	0	6,039,978	7,789,424	331,512	(633,855)	0	226	10,169	(291,948)
Southern Ohio Coal - Meigs	13,377	10,244,513	12,902,415	563,017	(1,049,919)	0	483	17,248	(455,793)
Windsor	0	3,124,985	4,101,819	171,519	(333,781)	0	161	5,261	(156,840)
Price River Coal	0	395,899	520,672	21,729	(42,369)	0	32	667	(19,941)
Houston Pipeline (HPL)	0	1,033,130	2,459,702	56,705	(200,155)	0	130	1,739	(141,581)
<b>Total</b>	<b>\$81,978,526</b>	<b>\$2,817,402,394</b>	<b>\$3,069,284,696</b>	<b>\$159,136,084</b>	<b>(\$249,759,364)</b>	<b>\$0</b>	<b>\$337,159</b>	<b>\$4,743,381</b>	<b>(\$3,564,212)</b>



AMERICAN ELECTRIC POWER  
 EAST RETIREMENT PLAN  
 ESTIMATED 2015 NET PERIODIC PENSION COST

Location	Service Cost	Projected Benefit Obligation	Market-Related Value of Assets	Interest Cost	Expected Return on Assets	Initial Transition (Asset)/ Obligation	Prior Service Cost	Gain/Loss Amortization	Net Periodic Pension Cost
AEP Energy Services, Inc.	\$22,717	\$1,415,025	\$1,284,972	\$78,897	(\$104,554)	\$0	\$16	\$2,276	(\$648)
AEP Pro Serv, Inc.	0	130,018	160,005	7,135	(13,019)	0	0	209	(5,675)
AEP T & D Services, LLC	0	0	0	0	0	0	0	0	0
American Electric Power Service Corporation	30,548,640	844,883,033	873,740,923	48,040,001	(71,093,637)	0	109,694	1,358,868	8,963,567
Appalachian Power Co - Distribution	6,251,297	277,777,558	316,130,068	15,586,307	(25,722,540)	0	6,298	446,764	(3,431,875)
Appalachian Power Co - Generation	6,274,884	212,348,953	232,282,588	11,997,155	(18,900,126)	0	7,414	341,532	(279,142)
Appalachian Power Co - Transmission	1,162,545	38,199,977	41,864,130	2,160,049	(3,406,357)	0	714	61,439	(21,610)
C3 Communications, Inc.	0	13,138	33,788	721	(2,749)	0	1	21	(2,006)
Cardinal Operating Company	1,484,214	56,147,835	61,683,336	3,162,604	(5,018,985)	0	1,265	90,305	(280,597)
AEP Texas Central Company - Distribution	454,419	2,726,569	1,881,212	174,559	(153,068)	0	7,297	4,385	487,592
AEP Texas Central Company - Generation	0	0	0	0	0	0	0	0	0
AEP Texas Central Company - Nuclear	0	0	0	0	0	0	0	0	0
AEP Texas Central Company - Transmission	66,818	520,273	308,951	32,217	(25,138)	0	809	837	75,542
Columbus Southern Power Co - Distribution	3,520,448	202,113,368	235,254,580	11,284,317	(19,141,948)	0	10,093	325,069	(4,002,021)
Columbus Southern Power Co - Generation	2,051,875	91,459,389	105,124,853	5,131,504	(8,553,689)	0	3,454	147,099	(1,219,757)
Columbus Southern Power Co - Transmission	341,931	21,314,124	25,611,782	1,188,393	(2,083,953)	0	1,047	34,281	(518,301)
Conesville Coal Preparation Company	103,704	2,567,454	2,924,683	146,582	(237,973)	0	15	4,129	16,458
Cook Coal Terminal	76,163	2,566,438	2,802,913	145,015	(228,064)	0	32	4,128	(2,727)
CSW Energy, Inc.	52,496	224,391	272,714	15,194	(22,190)	0	704	361	46,566
Elmwood	266,071	1,157,334	876,480	78,110	(71,316)	0	2,774	1,861	277,501
EnerShop Inc.	0	0	0	0	0	0	0	0	0
Indiana Michigan Power Co - Distribution	3,674,572	153,180,401	172,681,659	8,607,540	(14,050,580)	0	7,565	246,368	(1,514,536)
Indiana Michigan Power Co - Generation	2,550,996	83,406,395	92,814,224	4,716,979	(7,552,011)	0	2,789	134,147	(147,099)
Indiana Michigan Power Co - Nuclear	7,111,606	140,541,381	146,150,144	8,102,574	(11,891,792)	0	14,048	226,040	3,562,476
Indiana Michigan Power Co - Transmission	870,601	30,320,611	33,529,527	1,711,642	(2,728,195)	0	1,086	48,766	(96,101)
Kentucky Power Co - Distribution	1,583,067	55,518,510	62,219,766	3,133,494	(5,062,633)	0	1,221	89,293	(255,557)
Kentucky Power Co - Generation	856,806	26,627,833	29,665,115	1,508,241	(2,413,760)	0	1,165	42,827	(4,722)
Kentucky Power Co - Transmission	310,780	5,992,228	6,308,867	345,883	(513,333)	0	474	9,638	153,441
Kingsport Power Co - Distribution	247,679	11,223,083	12,531,063	629,467	(1,019,614)	0	307	18,051	(124,111)
Kingsport Power Co - Transmission	70,706	2,536,263	2,717,949	143,059	(221,151)	0	102	4,079	(3,204)
Memco	1,637,086	7,300,801	4,840,316	490,474	(393,842)	0	15,780	11,742	1,761,240
Ohio Power Co - Distribution	4,554,209	203,535,469	232,646,384	11,419,085	(18,929,727)	0	9,631	327,356	(2,619,446)
Ohio Power Co - Generation	4,688,372	186,142,746	207,639,111	10,472,008	(16,894,962)	0	8,093	299,383	(1,427,106)
Ohio Power Co - Transmission	1,263,167	45,382,170	50,827,465	2,559,700	(4,135,676)	0	2,673	72,990	(237,146)
Public Service Co of Oklahoma - Distribution	555,952	2,696,893	1,752,517	178,502	(142,597)	0	8,616	4,338	604,812
Public Service Co of Oklahoma - Generation	155,980	739,925	464,985	49,163	(37,834)	0	1,620	1,190	170,118
Public Service Co of Oklahoma - Transmission	45,726	587,027	578,394	34,723	(47,062)	0	970	944	35,301
Southwestern Electric Power Co - Distribution	340,348	1,663,813	1,026,101	109,980	(83,491)	0	5,763	2,676	375,277
Southwestern Electric Power Co - Generation	273,402	1,477,413	986,004	96,077	(80,228)	0	5,873	2,376	297,500
Southwestern Electric Power Co - Texas - Distribution	126,957	2,222,363	1,026,249	128,921	(83,503)	0	1,481	3,574	177,430
Southwestern Electric Power Co - Texas - Transmission	0	0	0	0	0	0	0	0	0
Southwestern Electric Power Co - Transmission	71,034	452,024	346,511	28,703	(28,195)	0	845	727	73,115
Water Transportation (Blackhawk)	1,130,889	24,806,240	26,151,434	1,423,320	(2,127,863)	0	5,152	39,897	471,396
AEP Texas North Company - Distribution	99,385	442,267	283,176	29,724	(23,041)	0	1,143	711	107,922
AEP Texas North Company - Generation	0	0	0	0	0	0	0	0	0
AEP Texas North Company - Transmission	18,290	77,707	36,661	5,268	(2,983)	0	18	125	20,718
Wheeling Power Co - Distribution	315,455	13,870,382	16,455,164	778,459	(1,338,907)	0	686	22,308	(221,998)
Wheeling Power Co - Transmission	0	1,025,285	1,340,755	56,263	(109,093)	0	9	1,649	(51,172)
Cedar Coal Co	12,468	3,621,571	4,653,883	199,421	(378,672)	0	43	5,825	(160,916)
Central Coal Company	0	0	0	0	0	0	0	0	0
Central Ohio Coal	0	8,915,029	11,171,895	489,219	(909,023)	0	64	14,338	(405,402)
Southern Ohio Coal - Martinka	0	5,982,326	7,742,230	328,285	(629,962)	0	38	9,622	(292,017)
Southern Ohio Coal - Meigs	13,912	10,146,729	12,824,244	557,573	(1,043,470)	0	81	16,320	(455,584)
Windsor	0	3,095,157	4,076,968	169,849	(331,730)	0	27	4,978	(156,876)
Price River Coal	0	392,120	517,517	21,518	(42,109)	0	5	631	(19,955)
Houston Pipeline (HPL)	0	1,023,269	2,444,799	56,153	(198,926)	0	22	1,646	(141,106)
Total	\$85,257,667	\$2,790,510,309	\$3,050,689,054	\$157,810,028	(\$248,225,273)	\$0	\$249,016	\$4,488,120	(\$420,441)

AMERICAN ELECTRIC POWER  
EAST RETIREMENT PLAN  
ESTIMATED 2016 NET PERIODIC PENSION COST

Location	Service Cost	Projected Benefit Obligation	Market-Related Value of Assets	Interest Cost	Expected Return on Assets	Initial Transition (Asset)/ Obligation	Prior Service Cost	Gain/Loss Amortization	Net Periodic Pension Cost
AEP Energy Services, Inc.	\$23,626	\$1,402,947	\$1,276,965	\$78,282	(\$103,904)	\$0	\$0	\$2,161	\$165
AEP Pro Serv, Inc.	0	128,908	159,008	7,074	(12,938)	0	0	199	(5,666)
AEP T & D Services, LLC	0	0	0	0	0	0	0	0	0
American Electric Power Service Corporation	31,770,586	837,671,554	868,296,996	47,709,957	(70,651,547)	0	97,828	1,290,575	10,217,400
Appalachian Power Co - Distribution	6,501,349	275,406,594	314,160,389	15,469,478	(25,562,587)	0	4,096	424,311	(3,163,353)
Appalachian Power Co - Generation	6,525,879	210,536,453	230,835,329	11,911,126	(18,782,597)	0	5,668	324,367	(15,557)
Appalachian Power Co - Transmission	1,209,046	37,873,922	41,603,292	2,144,647	(3,385,175)	0	455	58,351	27,326
C3 Communications, Inc.	0	13,026	33,577	715	(2,732)	0	0	20	(1,997)
Cardinal Operating Company	1,543,582	55,668,586	61,299,012	3,139,473	(4,987,775)	0	857	85,767	(218,096)
AEP Texas Central Company - Distribution	472,596	2,703,296	1,869,491	174,275	(152,117)	0	6,802	4,165	505,720
AEP Texas Central Company - Generation	0	0	0	0	0	0	0	0	0
AEP Texas Central Company - Nuclear	0	0	0	0	0	0	0	0	0
AEP Texas Central Company - Transmission	69,491	515,832	307,026	32,119	(24,982)	0	753	795	78,175
Columbus Southern Power Co - Distribution	3,661,266	200,388,234	233,788,804	11,197,057	(19,022,916)	0	8,037	308,732	(3,847,824)
Columbus Southern Power Co - Generation	2,133,950	90,678,740	104,469,862	5,093,024	(8,500,499)	0	2,636	139,706	(1,131,183)
Columbus Southern Power Co - Transmission	355,608	21,132,197	25,452,205	1,179,127	(2,070,994)	0	837	32,558	(502,864)
Conesville Coal Preparation Company	107,852	2,545,539	2,906,461	145,603	(236,493)	0	0	3,922	20,884
Cook Coal Terminal	79,209	2,544,532	2,785,449	143,976	(226,646)	0	16	3,920	475
CSW Energy, Inc.	54,596	222,475	271,015	15,204	(22,052)	0	657	343	48,748
Elmwood	276,714	1,147,456	871,019	78,150	(70,873)	0	2,584	1,768	288,343
EnerShop Inc.	0	0	0	0	0	0	0	0	0
Indiana Michigan Power Co - Distribution	3,821,555	151,872,933	171,605,749	8,543,613	(13,963,208)	0	6,134	233,986	(1,357,920)
Indiana Michigan Power Co - Generation	2,653,036	82,694,482	92,235,936	4,683,378	(7,505,049)	0	2,115	127,405	(39,115)
Indiana Michigan Power Co - Nuclear	7,396,071	139,341,793	145,239,541	8,052,126	(11,817,844)	0	12,352	214,680	3,857,384
Indiana Michigan Power Co - Transmission	905,425	30,061,810	33,320,619	1,699,303	(2,711,230)	0	836	46,315	(59,352)
Kentucky Power Co - Distribution	1,646,390	55,044,633	61,832,100	3,110,876	(5,031,151)	0	829	84,806	(188,251)
Kentucky Power Co - Generation	891,078	26,400,552	29,480,284	1,497,607	(2,398,750)	0	934	40,675	31,543
Kentucky Power Co - Transmission	323,211	5,941,082	6,269,559	343,748	(510,141)	0	412	9,153	166,384
Kingsport Power Co - Distribution	257,586	11,127,288	12,452,987	624,736	(1,013,274)	0	216	17,143	(113,592)
Kingsport Power Co - Transmission	73,534	2,514,615	2,701,014	142,023	(219,776)	0	82	3,874	(263)
Memco	1,702,569	7,238,485	4,810,158	490,633	(391,393)	0	14,710	11,152	1,827,672
Ohio Power Co - Distribution	4,736,377	201,798,197	231,196,859	11,333,423	(18,812,014)	0	7,645	310,904	(2,423,664)
Ohio Power Co - Generation	4,875,907	184,553,929	206,345,396	10,394,814	(16,789,902)	0	6,400	284,337	(1,228,445)
Ohio Power Co - Transmission	1,313,694	44,994,812	50,510,779	2,541,143	(4,109,959)	0	2,215	69,322	(183,585)
Public Service Co of Oklahoma - Distribution	578,190	2,673,873	1,741,598	178,454	(141,710)	0	8,034	4,120	627,088
Public Service Co of Oklahoma - Generation	162,219	733,609	462,088	49,158	(37,599)	0	1,510	1,130	176,417
Public Service Co of Oklahoma - Transmission	47,555	582,017	574,790	34,547	(46,769)	0	903	897	37,132
Southwestern Electric Power Co - Distribution	353,962	1,649,611	1,019,708	109,945	(82,972)	0	5,376	2,542	388,853
Southwestern Electric Power Co - Generation	284,338	1,464,803	979,861	95,983	(79,729)	0	5,477	2,257	308,325
Southwestern Electric Power Co - Texas - Distribution	132,035	2,203,394	1,019,855	128,155	(82,983)	0	1,378	3,395	181,979
Southwestern Electric Power Co - Texas - Transmission	0	0	0	0	0	0	0	0	0
Southwestern Electric Power Co - Transmission	73,876	448,166	344,352	28,647	(28,019)	0	787	690	75,981
Water Transportation (Blackhawk)	1,176,125	24,594,507	25,988,495	1,414,143	(2,114,631)	0	4,653	37,892	518,182
AEP Texas North Company - Distribution	103,361	438,492	281,412	29,734	(22,898)	0	1,066	676	111,938
AEP Texas North Company - Generation	0	0	0	0	0	0	0	0	0
AEP Texas North Company - Transmission	19,022	77,044	36,432	5,272	(2,964)	0	17	119	21,464
Wheeling Power Co - Distribution	328,073	13,751,992	16,352,638	772,633	(1,330,581)	0	548	21,187	(208,140)
Wheeling Power Co - Transmission	0	1,016,533	1,332,401	55,781	(108,415)	0	0	1,566	(51,067)
Cedar Coal Co	12,967	3,590,659	4,624,887	197,746	(376,318)	0	0	5,532	(160,072)
Central Coal Company	0	0	0	0	0	0	0	0	0
Central Ohio Coal	0	8,838,935	11,102,287	485,030	(903,370)	0	0	13,618	(404,723)
Southern Ohio Coal - Martinka	0	5,931,264	7,693,992	325,473	(626,044)	0	0	9,138	(291,433)
Southern Ohio Coal - Meigs	14,469	10,060,122	12,744,341	552,835	(1,036,981)	0	0	15,499	(454,177)
Windsor	0	3,068,738	4,051,566	168,395	(329,668)	0	0	4,728	(156,545)
Price River Coal	0	388,773	514,293	21,334	(41,847)	0	0	599	(19,914)
Houston Pipeline (HPL)	0	1,014,535	2,429,567	55,672	(197,689)	0	0	1,563	(140,454)
<b>Total</b>	<b>\$88,667,974</b>	<b>\$2,766,691,974</b>	<b>\$3,031,681,443</b>	<b>\$156,685,644</b>	<b>(\$246,681,704)</b>	<b>\$0</b>	<b>\$215,855</b>	<b>\$4,262,558</b>	<b>\$3,150,326</b>

AMERICAN ELECTRIC POWER  
 EAST RETIREMENT PLAN  
 ESTIMATED 2017 NET PERIODIC PENSION COST

Location	Service Cost	Projected Benefit Obligation	Market-Related Value of Assets	Interest Cost	Expected Return on Assets	Initial Transition (Asset)/ Obligation	Prior Service Cost	Gain/Loss Amortization	Net Periodic Pension Cost
AEP Energy Services, Inc.	\$24,571	\$1,392,909	\$1,269,041	\$77,750	(\$103,280)	\$0	\$0	\$2,058	\$1,098
AEP Pro Serv, Inc.	0	127,986	158,021	7,020	(12,860)	0	0	189	(5,651)
AEP T & D Services, LLC	0	0	0	0	0	0	0	0	0
American Electric Power Service Corporation	33,041,409	831,677,684	862,908,726	47,430,482	(70,226,998)	0	0	1,228,496	11,473,389
Appalachian Power Co - Distribution	6,761,403	273,435,951	312,210,848	15,369,032	(25,408,980)	0	0	403,900	(2,874,644)
Appalachian Power Co - Generation	6,786,914	209,029,982	229,402,866	11,837,716	(18,669,732)	0	0	308,764	263,663
Appalachian Power Co - Transmission	1,257,408	37,602,919	41,345,120	2,131,518	(3,364,833)	0	0	55,544	79,637
C3 Communications, Inc.	0	12,933	33,369	709	(2,716)	0	0	19	(1,987)
Cardinal Operating Company	1,605,326	55,270,256	60,918,617	3,119,668	(4,957,803)	0	0	81,641	(151,169)
AEP Texas Central Company - Distribution	491,500	2,683,953	1,857,889	174,176	(151,203)	0	0	3,965	518,438
AEP Texas Central Company - Generation	0	0	0	0	0	0	0	0	0
AEP Texas Central Company - Nuclear	0	0	0	0	0	0	0	0	0
AEP Texas Central Company - Transmission	72,270	512,141	305,121	32,055	(24,832)	0	0	756	80,250
Columbus Southern Power Co - Distribution	3,807,716	198,954,377	232,338,013	11,121,651	(18,908,606)	0	0	293,881	(3,685,357)
Columbus Southern Power Co - Generation	2,219,308	90,029,898	103,821,568	5,059,937	(8,449,419)	0	0	132,986	(1,037,187)
Columbus Southern Power Co - Transmission	369,832	20,980,988	25,294,260	1,171,108	(2,058,549)	0	0	30,992	(486,617)
Conesville Coal Preparation Company	112,166	2,527,325	2,888,425	144,778	(235,072)	0	0	3,733	25,606
Cook Coal Terminal	82,378	2,526,325	2,768,164	143,089	(225,284)	0	0	3,732	3,914
CSW Energy, Inc.	56,780	220,883	269,333	15,230	(21,919)	0	0	326	50,417
Elmwood	287,783	1,139,245	865,614	78,274	(70,447)	0	0	1,683	297,292
EnerShop Inc.	0	0	0	0	0	0	0	0	0
Indiana Michigan Power Co - Distribution	3,974,417	150,786,222	170,540,839	8,488,736	(13,879,302)	0	0	222,731	(1,193,419)
Indiana Michigan Power Co - Generation	2,759,157	82,102,770	91,663,560	4,654,739	(7,459,951)	0	0	121,276	75,223
Indiana Michigan Power Co - Nuclear	7,691,913	138,344,748	144,338,249	8,010,219	(11,746,830)	0	0	204,353	4,159,656
Indiana Michigan Power Co - Transmission	941,642	29,846,706	33,113,845	1,688,764	(2,694,938)	0	0	44,087	(20,446)
Kentucky Power Co - Distribution	1,712,245	54,650,767	61,448,397	3,091,553	(5,000,919)	0	0	80,726	(116,394)
Kentucky Power Co - Generation	926,721	26,211,645	29,297,342	1,488,559	(2,384,336)	0	0	38,718	69,663
Kentucky Power Co - Transmission	336,139	5,898,571	6,230,653	341,978	(507,076)	0	0	8,713	179,755
Kingsport Power Co - Distribution	267,889	11,047,668	12,375,709	620,667	(1,007,185)	0	0	16,319	(102,311)
Kingsport Power Co - Transmission	76,476	2,496,622	2,684,253	141,136	(218,455)	0	0	3,688	2,844
Memco	1,770,672	7,186,691	4,780,308	491,318	(389,041)	0	0	10,616	1,883,565
Ohio Power Co - Distribution	4,925,833	200,354,251	229,762,152	11,259,764	(18,698,972)	0	0	295,949	(2,217,426)
Ohio Power Co - Generation	5,070,943	183,233,373	205,064,907	10,328,631	(16,689,010)	0	0	270,659	(1,018,777)
Ohio Power Co - Transmission	1,366,241	44,672,856	50,197,331	2,525,279	(4,085,262)	0	0	65,988	(127,754)
Public Service Co of Oklahoma - Distribution	601,318	2,654,741	1,730,790	178,597	(140,859)	0	0	3,921	642,978
Public Service Co of Oklahoma - Generation	168,708	728,360	459,221	49,205	(37,373)	0	0	1,076	181,615
Public Service Co of Oklahoma - Transmission	49,457	577,852	571,223	34,408	(46,488)	0	0	854	38,230
Southwestern Electric Power Co - Distribution	368,121	1,637,808	1,013,380	110,027	(82,473)	0	0	2,419	398,094
Southwestern Electric Power Co - Generation	295,711	1,454,321	973,780	95,991	(79,250)	0	0	2,148	314,600
Southwestern Electric Power Co - Texas - Distribution	137,317	2,187,628	1,013,526	127,525	(82,485)	0	0	3,231	185,588
Southwestern Electric Power Co - Texas - Transmission	0	0	0	0	0	0	0	0	0
Southwestern Electric Power Co - Transmission	76,831	444,959	342,215	28,621	(27,851)	0	0	657	78,258
Water Transportation (Blackhawk)	1,223,170	24,418,523	25,827,222	1,406,466	(2,101,924)	0	0	36,069	563,781
AEP Texas North Company - Distribution	107,495	435,355	279,665	29,776	(22,760)	0	0	643	115,154
AEP Texas North Company - Generation	0	0	0	0	0	0	0	0	0
AEP Texas North Company - Transmission	19,783	76,493	36,206	5,281	(2,947)	0	0	113	22,230
Wheeling Power Co - Distribution	341,196	13,653,591	16,251,161	767,624	(1,322,585)	0	0	20,168	(193,597)
Wheeling Power Co - Transmission	0	1,009,260	1,324,133	55,359	(107,763)	0	0	1,491	(50,914)
Cedar Coal Co	13,486	3,564,967	4,596,187	196,281	(374,056)	0	0	5,266	(159,024)
Central Coal Company	0	0	0	0	0	0	0	0	0
Central Ohio Coal	0	8,775,689	11,033,391	481,353	(897,942)	0	0	12,963	(403,626)
Southern Ohio Coal - Martinka	0	5,888,824	7,646,246	323,006	(622,282)	0	0	8,699	(290,577)
Southern Ohio Coal - Meigs	15,048	9,988,138	12,665,255	548,682	(1,030,750)	0	0	14,754	(452,266)
Windsor	0	3,046,780	4,026,424	167,118	(327,687)	0	0	4,500	(156,068)
Price River Coal	0	385,992	511,101	21,172	(41,595)	0	0	570	(19,853)
Houston Pipeline (HPL)	0	1,007,275	2,414,490	55,250	(196,501)	0	0	1,488	(139,763)
Total	\$92,214,693	\$2,746,895,202	\$3,012,868,158	\$155,727,277	(\$245,199,381)	\$0	\$0	\$4,057,521	\$6,800,111