



*American Electric Power
Retirement Plan — East*

Actuarial Valuation Report

Pension Cost for Fiscal Year Ending December 31, 2005

Employer Contributions for Plan Year Beginning January 1, 2005

March 2005

Table of Contents

Management Summary of Valuation Results..... *MS*

Supplemental Information..... *SI*

Miscellaneous by Location..... *ML*

Management Summary of Valuation Results

<i>Financial Results</i>	<i>MS-1</i>
<i>Highlights</i>	<i>MS-3</i>
<i>FAS 87 Pension Cost and Funded Position</i>	<i>MS-7</i>
<i>Employer Contributions and ERISA Funded Position</i>	<i>MS-10</i>
<i>Actuarial Certification</i>	<i>MS-13</i>

Financial Results

This report summarizes financial results for American Electric Power's (AEP) Retirement Plan for East Employees based on actuarial valuations as of January 1, 2005, and January 1, 2004.



	January 1, 2005	January 1, 2004
FAS 87 Pension Cost		
Amount	\$ 48,522,750	\$ 16,123,936
Percent of covered pay	4.6%	1.5%
FAS 87 Funded Position		
Accumulated benefit obligation [ABO]	\$ 2,865,596,559	\$ 2,556,986,820
Fair value of assets [FV]	2,395,158,061	2,277,129,710
ABO funded percentage [FV ÷ ABO]	83.6%	89.1%
Prepaid (accrued) pension cost	\$ 138,652,941	\$ 138,652,941
Employer Contributions		
Minimum required	\$ 0	\$ 0
Percent of covered pay	0.0%	0.0%
Maximum deductible	\$ 862,646,399	\$ 24,654,406
Percent of covered pay	81.5%	2.2%
ERISA Funded Position		
Actuarial accrued liability [AAL]	\$ 2,290,303,649	\$ 2,212,339,296
Actuarial value of assets [AV]	2,412,147,355	2,505,032,141
AAL funded percentage [AV ÷ AAL]	105.3%	113.2%
Current liability funded percentage:		
▶ Selected interest rate	90.7%	99.6%
▶ Highest allowable interest rate	90.7%	102.9%

Discussion of Financial Results

The financial results of AEP's East Retirement Plan were affected by the following factors:

- ▶ Investment returns during the prior year were higher than expected, which increased the funded percentage and decreased the pension cost.
- ▶ Improved data for the terminated vested population increased liabilities, which increased the pension cost and decreased the funded status.
- ▶ Long-term bond yields decreased during the prior year resulting in a lower FAS 87 discount rate, which increased the pension cost.
- ▶ The Pension Funding Equity Act provided current liability interest rate relief for the 2004 and 2005 plan years. This increased the current liability funded percentage. There is no minimum required contribution for 2005.

Highlights

Economic Assumptions

The discount rate for pension cost purposes reflects the time value of money as the measurement date. This rate is based on high-grade bond yields, after allowing for call and default risk. Historically, AEP selected a single discount rate for all plans: Moody's Aa corporate bond rate, rounded up to the next quarter of a percent. AEP now selects a rate based on each plan's expected cash flows. The duration of AEP's pension plans is 10.3 years. The following benchmark bond yields illustrate change in the markets during 2004:

	December 31, 2004	December 31, 2003
30-year Treasury	4.83%	5.07%
Merrill Lynch 10+ High Quality	5.62%	5.84%
Moody's Aa	5.66%	6.01%

The assumed rate of return on assets for pension cost purposes is the weighted average of expected long-term asset return assumptions. The salary increase rate is a long-term rate based on current expectations of future pay increases. The assumptions for pension cost purposes are:

	December 31, 2004	December 31, 2003
Discount rate	5.50%	6.25%
Rate of return on assets	8.75%	8.75%
Salary increase rate	Rates vary by age from 3.50% to 8.50%	Rates vary by age from 3.50% to 8.50%

Assumptions used to determine statutory contribution limits must be reasonable taking into account the experience of the plan and reasonable expectations. The discount rate used to determine the normal cost and actuarial accrued liability is based on the long-term expected return on assets. The current liability interest rate must be within the permissible range as issued by the IRS. The Pension Funding Equity Act extended interest rate relief for the 2004 and 2005 plan years. That range and assumptions for contribution purposes are:

	January 1, 2005	January 1, 2004
Discount rate for normal cost and actuarial accrued liability	8.50%	8.50%
Current liability interest rate:		
▶ Permissible range	4.59% to 6.10%	4.72% to 6.55%
▶ Selected rate	6.10%	6.29%
Salary increase rate	Rates vary by age from 3.50% to 8.50%	Rates vary by age from 3.50% to 8.50%

Demographic Assumptions

The cost of providing plan benefits depends on demographic factors such as retirement, mortality and turnover. Demographic assumptions used in the valuation were selected to reflect the experience of the covered population and reasonable expectations. If actual experience is more favorable than assumed, future plan costs will be lower. Alternatively, if actual experience is less favorable than assumed, future plan costs will be higher. The mortality table was changed from the 1983 Group Annuity Mortality Table to the 1994 Group Annuity Mortality Table to value all liabilities except for current liability purposes. The lump sum election percentage was changed from 100% electing lump sums to 75% electing lump sums and 25% electing life annuities. No other demographic assumptions have changed since the prior valuation.

Assets

In the year ended December 31, 2004, the plan's portfolio achieved a 12.9% investment return (net of expenses), while the capital markets performed as follows:



Large equities [S&P 500]	10.9%
Intermediate/small equities [Russell 2500]	18.3%
Non-U.S. equities [EAFE]	20.2%
Bonds [Lehman Brothers Aggregate]	4.3%
Cash equivalents [Salomon Brothers 90-Day T-Bill]	1.2%

Changes in Benefits Valued

There have been no changes in benefits valued since the prior year.

PBGC Reporting Requirements

Participants must be notified of the plan's funded position if the plan is required to pay a variable PBGC premium and the funded percentage is below a specified "gateway" percentage. The plan is not expected to pay a variable PBGC premium for 2005. Also, the plan's current liability funded percentage is above the "gateway" percentage for both 2005 and 2004. Consequently, no participant notice is required.

Additional financial and actuarial information must be provided to the PBGC if, at the end of the year, all defined benefit plans within the controlled group have an unfunded vested liability of \$50 million or more using assumptions mandated by the PBGC. In accordance with PBGC guidance, this includes the use of an interest rate equal to 100% of the yield on 30-year U.S. Treasury bonds for information years ending in 2004. As of December 31, 2004, unfunded vested liabilities for all defined benefit plans within the controlled group were more than \$50 million. Consequently, additional financial and actuarial information must be provided to the PBGC. The due date for the PBGC filing is 105 days after the end of the company's fiscal year.

FAS 87 Pension Cost and Funded Position

Pension cost is the amount recognized in AEP's financial statement as the cost of the pension plan and is determined in accordance with Financial Accounting Standard No. 87. The fiscal 2005 pension cost for the plan is \$48,522,750, or 4.6% of covered pay.

Under FAS 87, an important measure of funded position is a comparison of the fair value of assets to the accumulated benefit obligation (ABO). The ABO is the present value of accumulated benefits based on service and pay as of the measurement date.

The plan's ABO funded percentage is 83.6% as of January 1, 2005, based on the fair value of assets of \$2,395,158,061 and an ABO of \$2,865,596,559. AEP's balance sheet must reflect a minimum liability equal to the unfunded ABO for each pension plan with a funded percentage (fair value of assets divided by ABO) under 100%. To the extent that the minimum liability exceeds the accrued pension cost, an additional liability is recorded together with an offsetting intangible asset and/or a reduction in shareholders' equity (accumulated other comprehensive income).

Disclosures at fiscal year-end are prepared before the corresponding valuation results are available. Therefore, the December 31, 2004, additional minimum liability was derived from the January 1, 2004, valuation results. The December 31, 2005, disclosures will be developed based on the results of the January 1, 2005, valuation, rolled forward to the end of the year and adjusted for the year-end discount rate and asset values, as well as significant changes in plan provisions and participant population.

Change in Pension Cost and Funded Position

The pension cost increased from \$16,123,936 in fiscal 2004 to \$48,522,750 in fiscal 2005 because:

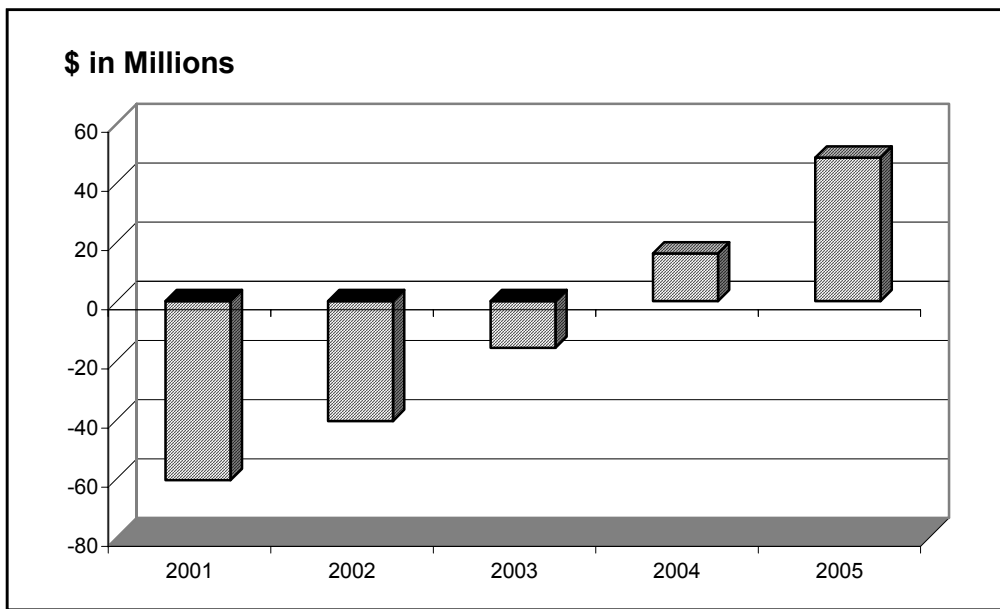
- ▶ Expected changes, based on prior year's assumptions, methods, plan provisions and contributions, increased the pension cost \$8,979,519.
- ▶ Noninvestment experience increased the pension cost \$2,842,478. The primary source of this change was better inactive data provided for the valuation.
- ▶ The return on the fair value of plan assets was 12.9% in fiscal 2004, which decreased the pension cost \$2,407,443.
- ▶ Assumption changes increased the pension cost \$22,984,260.

The ABO funded percentage decreased from 89.1% to 83.6% primarily due to a lower discount rate increasing the ABO. This was offset somewhat by better than expected asset returns.

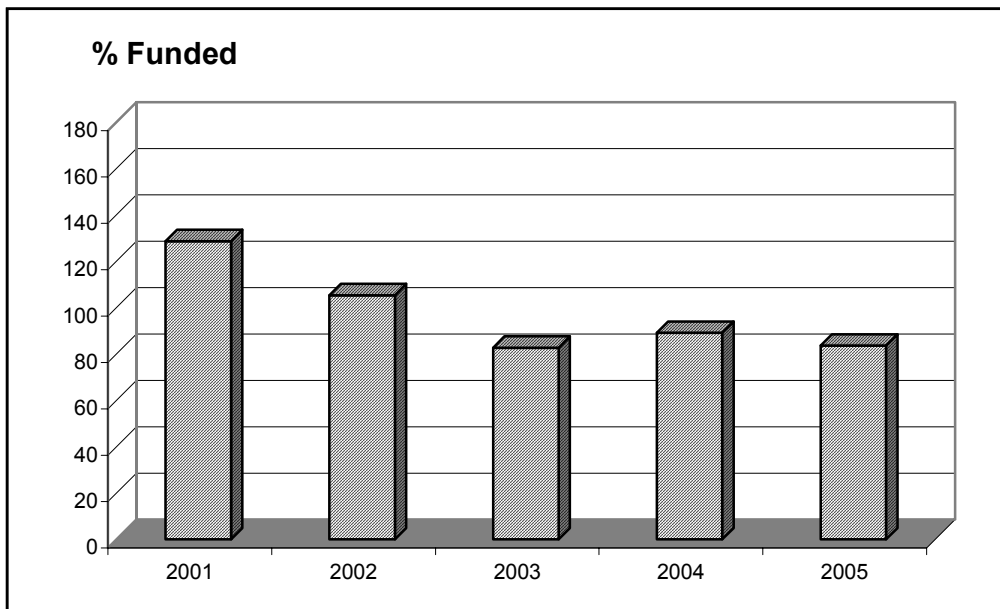
History of Pension Cost and Funded Position

The following charts show the history of the plan's pension cost and ABO funded position:

History of Pension Cost



History of the Accumulated Benefit Obligation Funded Status



History of Pension Cost and ABO Funded Percentage

----- Pension cost -----

<i>Fiscal year</i>	<i>Amount</i>	<i>Percent of covered pay</i>	<i>ABO funded percentage</i>	<i>Discount rate</i>
2005	\$ 48,522,750	4.6%	83.6%	5.50%
2004	16,123,936	1.5	89.1	6.25
2003	(15,794,829)	(1.4)	82.7	6.75
2002	(40,513,046)	(4.0)	105.3	7.25
2001	(60,470,982)	(6.1)	128.6	7.50

Employer Contributions and ERISA Funded Position

AEP's funding policy is to contribute an amount equal to the net pension cost each year under FAS 87. For 2005, there is no minimum required contribution. The maximum deductible contribution under the Internal Revenue Code is \$862,646,399, or 81.5% of covered pay. AEP intends to fund an amount equal to the expected unfunded ABO by the end of 2005 to eliminate the reduction in shareholders' equity.

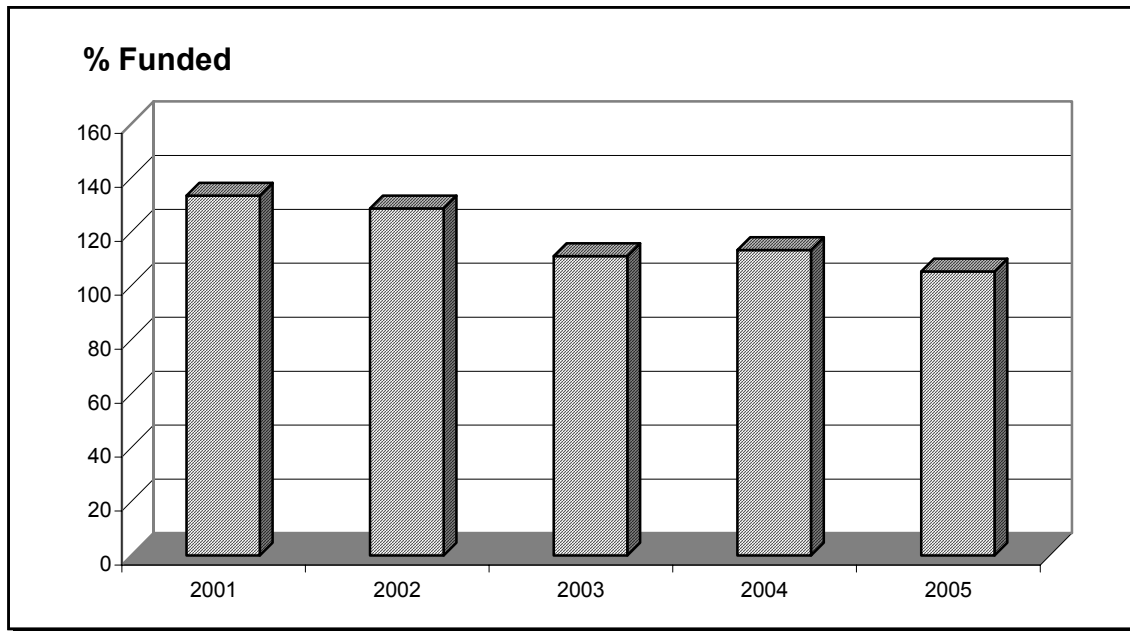
The funded position, on a contribution basis, is measured by comparing the actuarial value of assets with the actuarial accrued liability (AAL). The actuarial value of assets is a smoothed value that recognizes investment gains and losses over time. The AAL is the funding target, under ERISA, on which the employer contribution limits are based. As the funded percentage for a plan approaches or exceeds 100%, contributions to the plan may be restricted.

The plan's funded percentage (actuarial value of assets divided by AAL) is 105.3% as of January 1, 2005. This percentage is based on an actuarial value of assets of \$2,412,147,355 and an AAL of \$2,290,303,649.

History of Employer Contributions and Funded Position

The following charts show the history of employer contributions and the funding range for 2005, as well as AAL funded position.

History of Actuarial Accrued Liability (AAL) Funded Position



History of Employer Contributions and AAL Funded Percentage and Current Year's Funding Range

----- Employer contributions -----

Plan year	Amount	Percent of covered pay	AAL funded percentage	Discount rate
2005:				
▶ Minimum	\$ 0	0.0%	105.3%	8.50%
▶ Maximum	862,646,399	81.5		
2004	16,123,936	1.5	113.2	8.50
2003	53,293,130	4.8	110.9	8.50
2002	0	0.0	128.6	8.50
2001	0	0.0	133.4	8.50

Current Liability

An alternative measure of funded position compares the actuarial value of assets with the plan's current liability. The current liability is the present value of benefits accrued to the valuation date reflecting IRS restrictions on interest and mortality assumptions.

If the current liability funded percentage is below 100%, quarterly contributions may be required in the following plan year. The plan's current liability funded percentage is 90.7% as of January 1, 2005. This percentage is based on an actuarial value of assets of \$2,412,147,355 and a current liability of \$2,659,093,161.

If the current liability funded percentage using the highest allowable interest rate is below 90%, additional funding requirements, as well as employee notification requirements, may be triggered. As a result of the Pension Funding Equity Act, the highest allowable current liability interest rate was increased for the 2004 and 2005 plan years. The highest allowable current liability interest rate for 2005 is 6.10%. The plan's current liability funded percentage on this basis is 90.7% as of January 1, 2005.

Actuarial Certification

American Electric Power retained Towers Perrin to perform a valuation of its pension plan for the purpose of determining (1) its pension cost in accordance with FAS 87 and (2) the minimum required and maximum tax-deductible contributions in accordance with ERISA and allowed by the Internal Revenue Code. This valuation has been conducted in accordance with generally accepted actuarial principles and practices.

The consulting actuaries are members of the Society of Actuaries and other professional actuarial organizations and meet their "General Qualification Standard for Prescribed Statements of Actuarial Opinions" relating to pension plans.


In preparing the results presented in this report, we have relied upon information provided to us regarding plan provisions, plan participants, and plan assets. While the scope of our engagement did not call for us to perform an audit or independent verification of this information, we have reviewed this information for reasonableness but have not audited it. The accuracy of the results presented in this report is dependent upon the accuracy and completeness of the underlying information.

The actuarial assumptions and the accounting policies and methods employed in the development of the pension cost have been selected by the plan sponsor, with the concurrence of Towers Perrin. FAS 87 requires that each significant assumption "individually represent the best estimate of a particular future event."

The actuarial assumptions and methods employed in the development of the contribution limits have been selected by Towers Perrin, with the concurrence of the plan sponsor. The Internal Revenue Code requires the use of assumptions "each of which is reasonable (taking into account the experience of the plan and reasonable expectations)" and "which, in combination, offer the actuary's best estimate of anticipated experience under the plan."

The results shown in this report are reasonable actuarial results. However, a different set of results could also be considered reasonable actuarial results, since the Actuarial Standards of Practice describe a "best-estimate range" for each assumption, rather than a single best-estimate value. Thus, reasonable results differing from those presented in this report could have been developed by selecting different points within the best-estimate ranges for various assumptions.

The information contained in this report was prepared for the internal use of American Electric Power and its auditors in connection with our actuarial valuation of the pension plan. It is not intended nor necessarily suitable for other purposes. Further distribution to, or use by, other parties of all or part of this report is expressly prohibited without Towers Perrin's prior written consent.



Michael J. Turk, ASA, EA, MAAA

Towers Perrin

March 2005



Joseph A. Perko, FSA, EA, MAAA

Supplemental Information

<i>Asset Values</i>	<i>SI-1</i>
<i>Basic Results for Pension Cost</i>	<i>SI-2</i>
<i>Pension Cost</i>	<i>SI-4</i>
<i>Selected Financial Statement Disclosure Information</i>	<i>SI-5</i>
<i>Present Value of Accumulated Plan Benefits for FAS 35</i>	<i>SI-7</i>
<i>Basic Results for Employer Contributions</i>	<i>SI-8</i>
<i>Minimum Required Employer Contribution</i>	<i>SI-9</i>
<i>Maximum Deductible Employer Contribution</i>	<i>SI-10</i>
<i>Actuarial Assumptions and Methods</i>	<i>SI-11</i>
<i>Participant Data</i>	<i>SI-15</i>
<i>Plan Provisions</i>	<i>SI-19</i>

Asset Values

Asset Values for Calculating Pension Cost

Fair value, excluding contributions receivable:

▶ As of January 1, 2004	\$ 2,277,129,710
▶ Contributions	16,123,936
▶ Disbursements	(180,661,201)
▶ Investment return	<u>282,565,616</u>
▶ As of January 1, 2005	\$ 2,395,158,061
▶ Rate of return	12.9%

Market-related value:

▶ As of January 1, 2004	\$ 2,527,767,287
▶ As of January 1, 2005	2,429,603,813
▶ Rate of return	2.7%

Asset Values for Calculating Employer Contributions

Market value, including contributions receivable:

▶ As of January 1, 2004	\$ 2,277,129,710
▶ Contributions	16,123,936
▶ Disbursements	(180,661,201)
▶ Investment return	<u>282,565,616</u>
▶ As of January 1, 2005	\$ 2,395,158,061
▶ Rate of return	12.9%

Actuarial value:

▶ As of January 1, 2004	\$ 2,505,032,141
▶ As of January 1, 2005	2,412,147,355
▶ Rate of return	3.0%
▶ Rate of return (assuming mid-year cash flow) for Schedule B of Form 5500	3.0%

Basic Results for Pension Cost

	January 1, 2005	January 1, 2004
Service Cost	\$ 71,546,810	\$ 63,327,398
Obligations		
Accumulated benefit obligation [ABO]:		
▶ Participants currently receiving benefits	\$ 1,428,537,934	\$ 1,294,816,626
▶ Deferred inactive participants	137,334,882	134,603,068
▶ Active participants	<u>1,299,723,743</u>	<u>1,127,567,126</u>
Total ABO	\$ 2,865,596,559	\$ 2,556,986,820
Obligation due to future salary increases	<u>98,675,183</u>	<u>53,317,026</u>
Projected benefit obligation [PBO]	\$ 2,964,271,742	\$ 2,610,303,846
Assets		
Fair value [FV]	\$ 2,395,158,061	\$ 2,277,129,710
Unrecognized investment losses (gains)	<u>34,445,752</u>	<u>250,637,577</u>
Market-related value	\$ 2,429,603,813	\$ 2,527,767,287
Funded Position		
Unfunded PBO	\$ 569,113,681	\$ 333,174,136
Minimum liability [ABO – FV, minimum zero]	470,438,498	279,857,110
Key Economic Assumptions		
Discount rate	5.50%	6.25%
Rate of return on assets	8.75%	8.75%
Salary increase rate	Rates vary by age from 3.50% to 8.50%	Rates vary by age from 3.50% to 8.50%

Fiscal 2004

**Development of Prepaid (Accrued)
 Pension Cost as of December 31,
 2004**

Prepaid (accrued) pension cost, as of December 31, 2003	\$ 138,652,941
Change during fiscal 2004:	
▶ Income (cost) recognized	(16,123,936)
▶ Employer contributions	16,123,936
▶ Effect of curtailments, settlements, and termination benefits	<u>0</u>
Prepaid (accrued) pension cost, as of December 31, 2004	\$ 138,652,941

January 1, 2005

January 1, 2004

Reconciliation of Funded Status

Funded status [FV – PBO]	\$ (569,113,681)	\$ (333,174,136)
Unrecognized net actuarial loss (gain)	679,543,817	439,652,312
Unrecognized prior service cost (credit)	28,222,805	32,174,765
Unrecognized transition obligation (asset)	<u>0</u>	<u>0</u>
Prepaid (accrued) pension cost	\$ 138,652,941	\$ 138,652,941

Balance Sheet Effects

Prepaid pension cost	\$ 138,652,941	\$ 138,652,941
Accrued pension cost	0	0
Additional minimum liability	(609,091,439)	(418,510,051)
Intangible asset	28,222,805	32,174,765
Accumulated other comprehensive income	<u>580,868,634</u>	<u>386,335,286</u>
Balance sheet effect	\$ 138,652,941	\$ 138,652,941

The additional minimum liability is equal to the minimum liability, adjusted for the prepaid (accrued) pension cost.

Pension Cost

	Fiscal 2005	Fiscal 2004
Pension Cost		
Service cost	\$ 71,546,810	\$ 63,327,398
Interest cost	161,470,138	159,414,696
Expected return on assets	(216,072,407)	(210,570,118)
Amortization:		
▶ Transition obligation (asset)	0	0
▶ Prior service cost (credit)	3,951,960	3,951,960
▶ Net loss (gain)	<u>27,626,249</u>	<u>0</u>
Pension cost	\$ 48,522,750	\$ 16,123,936
Percent of covered pay	4.6%	1.5%
Per active participant	\$ 3,241	\$ 1,055

Change in Pension Cost

Pension cost for fiscal 2004	\$ 16,123,936
Change from fiscal 2004 to fiscal 2005:	
▶ Expected based on prior valuation	8,979,519
▶ Loss (gain) from noninvestment experience	2,842,478
▶ Loss (gain) from asset experience	(2,407,443)
▶ Assumption changes	22,984,260
▶ Plan amendments	<u>0</u>
Pension cost for fiscal 2005	\$ 48,522,750

Selected Financial Statement Disclosure Information

The following information was included in AEP's 2004 pension disclosures. This information was developed by adjusting the prior year's valuation results for the passage of time and other significant changes.

	Fiscal 2004	Fiscal 2003
Change in Benefit Obligation		
PBO, beginning of year	\$ 2,554,102,543	\$2,476,865,924
Service cost	63,327,398	57,162,979
Interest cost	159,414,696	161,329,254
Plan amendments	0	0
Actuarial loss (gain)	293,406,328	59,906,159
Benefits paid	(180,661,201)	(201,161,773)
Effect of curtailments, settlements and termination benefits	<u>0</u>	<u>0</u>
PBO, end of year	\$ 2,889,589,764	\$2,554,102,543
Change in Plan Assets		
Fair value of plan assets, beginning of year	\$ 2,278,132,394	\$ 1,985,181,830
Actual return on plan assets	292,148,089	440,819,207
Employer contributions	16,123,936	53,293,130
Benefits paid	(180,661,201)	(201,161,773)
Settlements	<u>0</u>	<u>0</u>
Fair value of plan assets, end of year	\$ 2,405,743,218	\$2,278,132,394

SI-6

The following information was included in AEP's pension disclosures.

	December 31, 2004	December 31, 2003
Reconciliation of Funded Status		
Funded status	\$ (483,846,546)	\$ (275,970,149)
Unrecognized net actuarial loss (gain)	594,276,682	382,448,325
Unrecognized prior service cost (credit)	28,222,805	32,174,765
Unrecognized transition obligation (asset)	<u>0</u>	<u>0</u>
Prepaid (accrued) pension cost	\$ 138,652,941	\$ 138,652,941
Amount Recognized in Statement of Financial Position		
Prepaid pension cost	\$ 138,652,941	\$ 138,652,941
Accrued pension cost	0	0
Additional minimum liability	(532,597,301)	(371,473,827)
Intangible asset	28,222,805	32,174,765
Accumulated other comprehensive income	<u>504,374,496</u>	<u>339,299,062</u>
Net amount recognized	\$ 138,652,941	\$ 138,652,941

The accumulated other comprehensive income has not been tax effected. Any tax effect would have been separately recognized.

Present Value of Accumulated Plan Benefits for FAS 35

	January 1, 2005	January 1, 2004
Actuarial Present Value of Accumulated Plan Benefits		
Vested benefits:		
▶ Participants currently receiving benefits	\$ 1,152,485,435	\$ 1,108,052,994
▶ Other participants	<u>1,004,201,676</u>	<u>1,013,969,196</u>
▶ Total vested benefits	\$ 2,156,687,111	\$ 2,122,022,190
Nonvested benefits	<u>81,551,953</u>	<u>64,412,728</u>
Total accumulated benefits	\$ 2,238,239,064	\$ 2,186,434,918
Market value of assets	2,395,158,061	2,277,129,710

Key Assumptions

Interest rate	8.50%	8.50%
Mortality	GAM94	GAM83

Change in Actuarial Present Value of Accumulated Plan Benefits

Actuarial present value of accumulated plan benefits as of January 1, 2004 \$ 2,186,434,918

Change from 2004 to 2005:

▶ Additional benefits accumulated (including the effect of noninvestment experience)	55,156,096
▶ Interest due to decrease in the discount period	178,325,440
▶ Benefits paid	(180,661,201)
▶ Assumption changes	(1,016,189)
▶ Plan amendments	<u>0</u>

Actuarial present value of accumulated plan benefits as of January 1, 2005 \$ 2,238,239,064

Basic Results for Employer Contributions

	January 1, 2005	January 1, 2004
Normal Cost and Liabilities		
Normal cost	\$ 51,495,684	\$ 52,179,549
Actuarial accrued liability [AAL]	2,290,303,649	2,212,339,296
Current liability [CL]:		
▶ Selected interest rate	2,659,093,161	2,515,292,360
▶ Highest allowable interest rate	2,659,093,161	2,434,389,548
Assets		
Market value	\$ 2,395,158,061	\$ 2,277,129,710
Unrecognized investment losses (gains)	<u>16,989,294</u>	<u>227,902,431</u>
Actuarial value [AV]	\$ 2,412,147,355	\$ 2,505,032,141
Funded Position		
Unfunded actuarial accrued liability [AAL – AV]	\$ (121,843,706)	\$ (292,692,845)
AAL funded percentage [AV ÷ AAL]	105.3%	113.2%
CL funded percentage:		
▶ Selected interest rate	90.7%	99.6%
▶ Highest allowable interest rate	90.7%	102.9%
Key Economic Assumptions		
Discount rate for normal cost and actuarial accrued liability	8.50%	8.50%
Current liability interest rate:		
▶ Selected	6.10%	6.29%
▶ Highest allowable	6.10%	6.55%
Salary increase rate	Rates vary by age from 3.50% to 8.50%	Rates vary by age from 3.50% to 8.50%

Minimum Required Employer Contribution

	January 1, 2005	January 1, 2004
Minimum Required Employer Contribution		
Normal cost	\$ 51,495,684	\$ 52,179,549
Amortization amounts	0	0
Interest adjustments	4,377,133	4,435,262
Additional funding charge	0	0
Credit balance with interest	<u>(18,077,650)</u>	<u>(12,926)</u>
Minimum required contribution before full funding limit	\$ 37,795,167	\$ 56,601,885
Minimum required contribution after full funding limit	0	0
Percent of covered pay	0.0%	0.0%
Per active participant	\$ 0	\$ 0

Maximum Deductible Employer Contribution

	January 1, 2005	January 1, 2004
Maximum Deductible Employer Contribution		
Maximum deductible contribution before adjustments	\$ 55,872,817	\$ 56,614,811
Allowable deduction, the greatest of:		
▶ Maximum deductible contribution after full funding limit	55,872,817	0
▶ Contribution necessary to satisfy minimum funding standards	0	0
▶ Contribution necessary to fund 100% of current liability	862,646,399	24,654,406
Maximum deductible contribution	\$ 862,646,399*	\$ 24,654,406
Percent of covered pay	81.5%	2.2%
Per active participant	\$ 57,617	\$ 1,614

The above amount represents the maximum deductible contribution for this plan. Deductibility of contributions to a defined contribution plan maintained for the same employees may be affected by the 25% of pay limitation for defined benefit and defined contribution plans combined.

Changes in Maximum Deductible Employer Contribution

Maximum required contribution as of January 1, 2004	\$ 24,654,406
Changes from 2004 to 2005:	
▶ Expected based on prior valuation	2,306,304
▶ Loss (gain) from noninvestment experience	15,338,145
▶ Loss (gain) from asset experience	145,691,949
▶ Change in assumptions	<u>674,655,595</u>
Maximum deductible contribution as of January 1, 2005	\$ 862,646,399

*Based on lowest permissible current liability rate of 4.59%.

Actuarial Assumptions and Methods

	Pension Cost	Contributions
Economic Assumptions		
▶ Discount rate	5.50%	8.50%
▶ Return on assets	8.50%	N/A
▶ Current liability	N/A	6.10%
▶ FAS 35	N/A	8.50%

Annual rates of increase in:

	Rates varying by age		
	Age	Rate	Rate
▶ Salaries	20	8.50%	8.50%
	30	6.00%	6.00%
	40	4.50%	4.50%
	50	3.50%	3.50%
	60	3.50%	3.50%
▶ Cash balance crediting rate and lump sum interest rate		5.50%	5.75%
▶ Future Social Security wage bases		4.00%	4.00%
▶ Indexed limits on compensation and benefits		3.00%	N/A

Demographic Assumptions

Mortality 1994 Group Annuity Mortality Table (male and female)
 1983 Group Annuity Mortality (male and female) for current liability purposes

Termination Rates varying by age

Age	Rate
20	10.4%
30	5.9%
40	2.7%
50	0.9%
60	0.9%

SI-12

Retirement

Rates varying by age; average retirement age 61

<i>Age</i>	<i>Rate</i>
55	10%
56-59	7%
60-61	16%
62	40%
63	20%
64	44%
65	84%
66-69	50%
70+	100%

Form of payment

75% lump sum; 25% annuity

Percent married

80% of male participants; 70% of female participants

Spouse ages

Wives are assumed to be three years younger than husbands

Valuation pay

2005 Base Salary Pay (Grandfathered) – estimated as the sum of the following updated one year according to the salary increase assumption:

(i) 2004 base salary for the period January 1, 2004, to November 30, 2004

(ii) The monthly base rate of pay on December 1, 2004.

2005 Expanded Pay (Cash Balance) – sum of the following updated one year according to the salary increase assumption:

(i) 2004 base salary for the period January 1, 2004, to November 30, 2004

(ii) The monthly base rate of pay on December 1, 2004

(iii) Average incentive paid for 2004, 2003 and 2002, including deferred amounts

Actuarial Methods

Pension cost:

- ▶ Service cost and projected benefit obligation Projected unit credit
- ▶ Market-related value of assets The market value on the valuation date less the following percentages of prior years' investment gains and losses:
 - 80% of the prior year
 - 60% of the second prior year
 - 40% of the third prior year
 - 20% of the fourth prior year.

The investment gain or loss is calculated each year by:

- Rolling forward the prior years' fair value of assets with actual contributions, benefit payments, and expected return on investments using the long term yield assumption.
- Comparing the actual fair value of assets to the expected value calculated above.

Contributions:

- ▶ Normal cost and actuarial accrued liability Projected unit credit
- ▶ Actuarial value of assets Same technique as above in market-related value, except the valuation interest rate is used to compute the expected market value. The actuarial value of assets must be within 20% of the fair value, plus contributions receivable.
- ▶ Benefits not valued All benefits were valued except:
 - Any liabilities that may be reinstated in the event of reemployment.
 - Preretirement death benefits for terminated vested participants.
 - The alternate benefit formula for Members who did not elect to withdraw their contributions.
 - Any liabilities relating to Member's unwithdrawn contributions.
 - Liabilities related to special benefits as a result of termination due to restructuring or downsizing.

Change in Assumptions and Methods Since Prior Valuation

Pension cost	Discount rate for benefit obligations changed from 6.25% to 5.50%.
Contributions	Current liability interest rate changed from 6.29% to 6.10%.

The mortality table was changed from the 1983 Group Annuity Mortality Table to the 1994 Group Mortality Table to value all liabilities except for current liability purposes.

The lump sum election percentage was changed from 100% electing lump sums to 75% electing lump sums and 25% electing life annuities to better reflect actual experience.

Data Sources

Towers Perrin used participant data as of December 1, 2004, and accrued pension costs as of December 31, 2004, supplied by AEP. Data were reviewed for reasonableness and consistency, but no audit was performed. Assumptions or estimates were made by the Towers Perrin actuaries when data were not available. We are not aware of any errors or omissions in the data that would have a significant effect on the results of our calculations.

Participant Data

	January 1, 2005	January 1, 2004
Active		
Number	14,972	15,280
Average age	46.8	46.2
Average past service	18.5	18.1
Average future service	12.6	12.9
Covered pay:		
▶ Total	\$ 1,092,042,708	\$ 1,104,348,759
▶ Average	72,939	72,274
Deferred Inactive		
Number	3,656	4,328
Average age	49.2	49.6
Annual benefits:		
▶ Total	\$ 27,601,809	\$ 29,278,060
▶ Average	7,550	6,765
Currently Receiving Benefits		
Number	11,315	10,931
Average age	71.9	71.5
Annual benefits:		
▶ Total	\$ 143,598,397	\$ 140,505,207
▶ Average	12,691	12,854
Total Participants Included in Valuation		
Number	29,943	30,539

SI-16

Analysis of Inactive Participant Data

Deferred Inactive

<i>Age nearest birthday</i>	<i>Number</i>	<i>Annual benefit</i>	<i>Average annual benefit</i>
< 40	242	\$ 1,198,142	\$ 4,951
40 – 49	1,649	10,955,956	6,644
50 – 54	995	8,688,340	8,732
55 – 59	567	5,207,328	9,184
60 – 64	187	1,439,339	7,697
> 64	<u>16</u>	<u>112,704</u>	7,044
Total	3,656	\$ 27,601,809	\$ 7,550

Currently Receiving Benefits

<i>Age nearest birthday</i>	<i>Number</i>	<i>Annual benefit</i>	<i>Average annual benefit</i>
< 55	144	\$ 740,160	\$ 5,140
55 – 59	910	13,125,840	14,424
60 – 64	1,759	29,157,184	16,576
65 – 69	1,942	26,117,958	13,449
70 – 74	1,975	26,510,425	13,423
75 – 79	2,035	25,636,930	12,598
80 – 84	1,450	14,572,500	10,050
> 84	<u>1,100</u>	<u>7,737,400</u>	7,034
Total	11,315	\$ 143,598,397	\$ 12,691

Active Participant Data by Age and Service
 AEP East Retirement Plan
 2005 Projected Pay

Age Nearest Birthday	Completed Years of Service												Total	
	0	1	2	3	4	5-9	10-14	15-19	20-24	25-29	30-34	Over 34		
0-24	Number		78	78	45	7	1							209
	Avg Pay		34,539	36,800	38,632	41,128	60,532							36,609
	Avg CB		1,323	2,275	3,028	13,335	8,130							2,480
25-29	Number		105	143	188	53	98	2						589
	Avg Pay		41,653	47,821	51,652	64,053	57,748	58,034						51,091
	Avg CB		1,750	3,380	5,281	8,857	10,451	5,900						5,374
30-34	Number		97	124	220	79	303	76	3					902
	Avg Pay		51,551	62,587	63,493	72,262	67,993	68,822	68,881					64,831
	Avg CB		2,545	5,007	7,040	10,126	13,691	20,291	22,800					9,950
35-39	Number		61	97	202	73	276	396	230	5				1,340
	Avg Pay		59,684	66,098	62,521	75,921	72,595	74,964	73,533	77,099				71,078
	Avg CB		3,383	5,863	7,714	12,506	17,587	29,185	38,671	46,533				21,481
40-44	Number		73	73	197	64	250	342	739	494	58			2,290
	Avg Pay		62,341	75,136	70,821	83,487	75,619	71,316	77,764	74,797	67,845			74,663
	Avg CB		4,026	7,770	11,096	17,308	21,932	34,923	51,636	64,657	69,401			41,793
45-49	Number		59	59	175	61	198	254	532	899	1,080	29		3,346
	Avg Pay		59,874	68,138	70,112	83,266	74,450	73,620	73,785	81,502	76,422	71,315		76,351
	Avg CB		3,970	8,029	13,326	20,074	25,735	44,735	61,772	88,809	99,064	113,450		72,834
50-54	Number		30	35	141	37	141	166	357	520	957	624	49	3,057
	Avg Pay		60,926	70,041	71,768	87,490	75,456	71,485	72,212	78,520	78,602	77,722	69,534	76,506
	Avg CB		4,625	9,301	15,895	23,099	31,551	54,561	75,639	110,176	131,761	155,496	164,245	108,778
55-59	Number		19	27	85	38	103	84	216	283	413	719	500	2,487
	Avg Pay		55,911	66,367	68,079	88,459	70,384	62,469	65,916	73,118	75,066	81,571	79,977	76,023
	Avg CB		4,602	9,487	16,747	26,755	38,088	59,126	91,600	131,816	160,632	208,817	233,761	161,690
60-64	Number		5	11	44	16	35	42	57	81	90	103	195	679
	Avg Pay		74,267	65,539	60,092	80,095	60,561	58,697	65,775	71,371	66,279	71,635	72,631	68,689
	Avg CB		6,866	12,048	16,072	26,951	40,699	67,509	112,975	169,358	184,567	239,406	265,420	174,889
65-69	Number		3	2	14	1	9	4	8	8	7	4	4	64
	Avg Pay		66,134	81,327	60,176	87,330	51,288	50,368	68,406	63,001	76,519	79,204	55,243	63,728
	Avg CB		5,529	14,928	15,778	30,736	33,742	79,450	141,165	150,025	280,758	366,916	310,449	123,810
Over 69	Number			2	2		1	3		1				9
	Avg Pay			79,138	63,185		39,245	28,863		48,598				51,009
	Avg CB			17,017	17,345		28,855	39,131		113,953				36,547
Total	Number		530	651	1,313	429	1,415	1,369	2,142	2,291	2,605	1,479	748	14,972
	Avg Pay		51,419	59,403	63,813	77,677	71,034	71,577	73,835	77,897	76,467	79,048	77,245	72,939
	Avg CB		2,916	5,636	10,192	16,180	21,726	39,234	62,718	96,744	123,619	187,008	237,871	82,989

Average Age = 46.8

Average Service = 18.5

SI-18

Reconciliation of Participant Data

	<i>Active</i>	<i>Deferred inactive</i>	<i>Currently receiving benefits</i>	<i>Total</i>
Included in January 1, 2004, valuation	15,280	4,328	10,931	30,539
Change due to:				
▶ New hire and rehire	608	(21)	0	587
▶ Nonvested termination	(284)	0	0	(284)
▶ Vested termination	(130)	130	0	0
▶ Retirement	(210)	(179)	389	0
▶ Disability	0	0	0	0
▶ Death without beneficiary	(8)	(25)	(310)	(343)
▶ Death with beneficiary	(7)	2	5	0
▶ Cashout	(277)	(181)	(1)	(459)
▶ Miscellaneous	<u>0</u>	<u>(398)*</u>	<u>301*</u>	<u>(97)</u>
▶ Net change	(308)	(672)	384	(596)
Included in January 1, 2005, valuation	14,972	3,656	11,315	29,943

* Majority of miscellaneous changes due to deferred inactive clean-up initiative in 2004.

Plan Provisions

Effective Date	May 1, 1955. Restated effective January 1, 2001.
Recent Amendments	Effective as of October 1, 2004.
Covered Employees	Employees become Members of the Plan on the first day of the month following completion of one year of service.
Participation Date	Date of becoming a covered employee.
Definitions	
Grandfathered Employee	If on December 31, 2000, either: <ul style="list-style-type: none">■ Participate in AEP System Retirement Plan, or■ In one-year waiting period for AEP System Retirement Plan participation.
Vesting Service	A period of time from employment date to termination date and, in general, includes periods of severance that are not in excess of 12 months.
Accredited Service	Elapsed time from date of hire (from benefit service start date).
Final Average Pay	Average of the highest 36-consecutive months of base pay out of the last 120 months of employment, subject to IRS limits.
Cash Balance Pay	Pay received during the year, including base pay, overtime, shift differential/Sunday premium pay and incentive pay, subject to IRS limits.
Covered Compensation Amount	The average of the Social Security taxable wage base during the 35-year period including the year in which the participant retires, dies, becomes disabled or otherwise terminates employment. This monthly average is calculated to the next lower or equal whole dollar amount and is then rounded to nearest \$50.
Normal Retirement Date (NRD)	The first day of the calendar month whose first day is nearest the later of the Member's 65 th birthday or the completion of five years of Vesting Service.

SI-20

Cash Balance Account Recordkeeping account to which annual interest credits and annual compensation credits is credited. The cash balance account is updated at the end of each plan year and is equal to:

$$\begin{aligned} & \text{Cash Balance Account as of the} \\ & \text{End of the Prior Plan Year} \\ & + \\ & \text{Interest Credits} \\ & + \\ & \text{Company Credits} \end{aligned}$$

Cash Balance Benefit Cash Balance Account converted to a monthly annuity.

Opening Balance For those participating or eligible for the AEP System Retirement Plan on December 31, 2000, opening balance is calculated as follows:

- Present value of monthly normal retirement benefit determined as of December 31, 2000, and payable at age 65 (or current age if older)
 - Present value determined based on 5.78% interest and IRS regulated mortality (GAM83 Unisex) data for lump sums (postretirement only)

Plus

- Credit for early retirement subsidy for monthly payments beginning at age 62 (or current age if older)

Plus

- Transition credit based on age, service and pay received in 2000 (see "Company Credits" for credit percentages)
 - Age and service based on completed whole years as of December 31, 2000.

For employees hired on or after January 1, 2001, opening balance is \$0.

Interest Credits Interest credits are applied to beginning of year account balance on December 31 each year.

Based on the average 30-year Treasury Bond rate for November of the previous year.

Minimum of 4%.

Company Credits Applied to account balance on December 31 or termination date if earlier.

Amount is a percentage of eligible pay received during the year, based on age plus years of Vesting Service (age and service in completed whole years as of December 31).

<i>Age Plus Years of Service</i>	<i>Annual Company Credit</i>
Less than 30	3.0%
30 – 39	3.5%
40 – 49	4.5%
50 – 59	5.5%
60 – 69	7.0%
70+	8.5%

Monthly Grandfathered Benefit Sum of (i)+(ii)+(iii):

- (i) 1.1% of Final Average Pay x Accredited Service up to 35 years
- (ii) 0.5% of Final Average Pay Less Covered Compensation x Accredited Service up to 35 years
- (iii) 1.33% of Final Average Pay x Accredited Service between 35 and 45 years.

Service continues to accrue and Final Average Pay grows through December 31, 2010.

Long-term Disability and Paid Leaves Compensation equal to base rate of pay as of disability date. Vesting service continues.

Unpaid Leave No compensation for annual compensation credit. Vesting service continues.

Eligibility for Benefits

Normal Retirement All Members at or after their Normal Retirement Date.

SI-22

Vested	All Members who terminate employment after completion of five years of Vesting Service, or upon death.
Early Retirement	Any time after attainment of age 55 and completion of five years of vesting.
Disability	All Members who are unable to work at own occupation solely because of sickness or injury for the first 24 months of disability. After 24 months of disability, the participant is eligible if unable to work at any gainful occupation for which the participant may be able, or may reasonably become qualified by education, training or experience, to perform.
Surviving Spouse	The surviving spouse of a Grandfathered Member who retired or is eligible to retire on Normal or Early Retirement and who was married to that spouse for the year preceding commencement and whose grandfathered benefit exceeds his or her Cash Balance Benefit.
Preretirement Death	Beneficiary of deceased Member.

Monthly Benefits Paid Upon the Following Events

Normal Retirement	For Grandfathered Employees, the better of the monthly grandfathered benefit or the Cash Balance Benefit determined as of Normal Retirement Date. For all other employees, the Cash Balance Benefit determined as of Normal Retirement Date.
Early Retirement	For Grandfathered Employees, the better of: (1) The monthly grandfathered retirement benefit reduced by 3% per year for each year commencement precedes age 62, and (2) The Cash Balance Benefit determined as of the Early Retirement Date. For all other employees, the Cash Balance Benefit determined as of the Early Retirement Date.

Deferred Vested Retirement The accrued Normal Retirement Benefit (better of Cash Balance and Grandfathered Benefits, if eligible), payable at Normal Retirement Date or actuarially reduced and payable at any age.

Disability The greater of (1) or (2):

- (1) Accrued Grandfathered Retirement Benefit reduced as in the Early Retirement Benefit. If retirement occurs prior to age 55, the benefit is further reduced actuarially from age 55. The Disability Retirement Benefit will reflect Accredited Service that accrued (at most recent rate of base earnings) to a Member while receiving benefits under the Company's LTD plan.

- (2) The Cash Balance Benefit with continued Company Credits while disabled.

Benefit (1) applies for Grandfathered Employees only.

Preretirement Death Better of (1) or (2):

- (1) The grandfathered monthly benefit as if the employee commenced a 60% qualified joint and survivor benefit at his earliest retirement date

- (2) Annuity equivalent of Cash Balance account, or the cash balance account.

Benefit (1) applies for Grandfathered Employees whose beneficiary is his or her spouse.

Surviving Spouse Benefits A benefit payable for life equal to 30% of the single life annuity payable to the grandfathered Member. The spouse's benefit is actuarially reduced for each year by which the spouse is more than 10 years younger than the Member. Payable to Grandfathered Employees only.

Form of Payment

- **Grandfathered Employees**

The following are available for Grandfathered Employees for both the Grandfathered Benefit and the Cash Balance Benefit.

 - Full lump sum payment.
 - Combination of partial lump sum (25%, 50% or 75% of full lump sum) with remainder paid as a monthly benefit (see below).
 - Monthly payment:
 - Single life annuity.
 - Optional joint annuities (spouse or other beneficiary).
 - Available in 40%, 50%, 60%, 75%, 100%.
 - Can elect pop-up and/or level income options.
 - Automatic company-paid 30% surviving spouse annuity included in Grandfathered Benefit annuity if terminate on or after age 55 and married at least one year. Cash Balance Benefit is actuarially reduced for this feature.

- **Employees Hired On or After January 1, 2001**

The following are available for those hired on or after January 1, 2001:

 - Full lump sum payment.
 - Combination of partial lump sum (25%, 50% or 75% of full lump sum) with remainder paid as a monthly benefit (see below).
 - Monthly payment:
 - Single life annuity.
 - Joint annuities (spouse or other beneficiary).
 - Available in 50%, 75%, 100%.

Member Contributions

Prior to January 1, 1978, employee contributions were required as a condition of Membership. In May and June of 1981, Members were permitted an election to withdraw those contributions. Those who did not elect to withdraw have retirement benefits based on a formula that differs from the one appearing in this table. However, the number of nonelecting Members is so small that special plan provisions for that group have not been included in this summary.

Benefits Not Valued

A small portion of the population made employee contributions to the plan. Because the amount of these contributions is not material to the plan, they are not part of the valuation.

Participants who were employees of Columbus Southern Power (CSP) at the time AEP acquired that company have a frozen benefit under the CSP benefit formula at December 31, 1986. Benefits for these participants are the greater of an all-service AEP benefit and a two-part benefit consisting of the frozen CSP benefit plus an AEP benefit accrued from January 1, 1987. Because this applies to a small portion of the population and the CSP frozen benefit is not often the greater benefit for these participants, this benefit is not valued.

Future Plan Changes

No future plan changes were recognized in determining pension cost. Towers Perrin is not aware of any future plan changes that are required to be reflected.

Changes in Benefits Valued Since Prior Year

Other than changes in the IRS pay cap and 415 limits, there have been no other changes in benefits valued since the prior year. The plan change effective October 1, 2004, incorporated the 417(e) rates for the lump sum and level income options; it did not affect the benefits valued.

AMERICAN ELECTRIC POWER
 EAST RETIREMENT PLAN
 SUMMARY OF PLAN PARTICIPANTS FOR THE 2005 VALUATION

ML - 1

Location	Vested Actives	Non-Vested Actives	Total Actives	Retirees Receiving Benefits	Beneficiaries	Deferred Vesteds	Total Inactives	Total Participants
AEP Energy Services, Inc.	3	1	4	2	0	39	41	45
AEP Pro Serv, Inc.	0	0	0	0	0	2	2	2
AEP T & D Services, LLC	0	0	0	0	0	0	0	0
American Electric Power Service Corporation	3,830	1,090	4,920	1,421	301	1,398	3,120	8,040
Appalachian Power Co - Distribution	1,188	51	1,239	1,277	430	314	2,021	3,260
Appalachian Power Co - Generation	1,061	22	1,083	610	200	100	910	1,993
Appalachian Power Co - Transmission	193	0	193	75	5	30	110	303
C3 Communications, Inc.	0	0	0	0	0	1	1	1
Cardinal Operating Company	250	0	250	140	40	26	206	456
AEP Texas Central Company - Distribution	7	85	92	2	1	0	3	95
AEP Texas Central Company - Generation	0	0	0	0	0	0	0	0
AEP Texas Central Company - Nuclear	0	0	0	0	0	0	0	0
AEP Texas Central Company - Transmission	2	8	10	0	0	0	0	10
Columbus Southern Power Co - Distribution	572	120	692	1,043	98	166	1,307	1,999
Columbus Southern Power Co - Generation	329	8	337	389	32	91	512	849
Columbus Southern Power Co - Transmission	43	6	49	85	10	14	109	158
Conesville Coal Preparation Company	12	1	13	4	1	0	5	18
Cook Coal Terminal	10	0	10	10	0	0	10	20
CSW Energy, Inc.	0	9	9	0	0	0	0	9
Elmwood	70	52	122	1	0	0	1	123
EnerShop Inc.	0	0	0	0	0	0	0	0
Indiana Michigan Power Co - Distribution	543	78	621	773	258	200	1,231	1,852
Indiana Michigan Power Co - Generation	421	0	421	277	82	181	540	961
Indiana Michigan Power Co - Nuclear	872	216	1,088	247	44	314	605	1,693
Indiana Michigan Power Co - Transmission	140	7	147	79	9	22	110	257
Kentucky Power Co - Distribution	247	5	252	187	72	83	342	594
Kentucky Power Co - Generation	138	0	138	70	18	19	107	245
Kentucky Power Co - Transmission	51	0	51	4	0	5	9	60
Kingsport Power Co - Distribution	49	2	51	46	15	18	79	130
Kingsport Power Co - Transmission	10	0	10	4	1	0	5	15
Memco	188	150	338	1	0	1	2	340
Ohio Power Co - Distribution	811	92	903	977	314	209	1,500	2,403
Ohio Power Co - Generation	808	1	809	604	188	175	967	1,776
Ohio Power Co - Transmission	191	6	197	105	36	26	167	364
Public Service Co of Oklahoma - Distribution	17	78	95	0	1	0	1	96
Public Service Co of Oklahoma - Generation	2	29	31	0	0	0	0	31
Public Service Co of Oklahoma - Transmission	0	3	3	1	0	0	1	4
Southwestern Electric Power Co - Distribution	5	67	72	0	0	0	0	72
Southwestern Electric Power Co - Generation	5	18	23	0	0	0	0	23
Southwestern Electric Power Co - Texas - Distributor	1	12	13	13	0	1	14	27
Southwestern Electric Power Co - Texas - Transmissi	0	0	0	0	0	0	0	0
Southwestern Electric Power Co - Transmission	2	4	6	0	0	0	0	6
Water Transportation (Blackhawk)	226	112	338	110	37	26	173	511
AEP Texas North Company - Distribution	2	25	27	0	0	0	0	27
AEP Texas North Company - Generation	1	1	2	0	0	0	0	2
AEP Texas North Company - Transmission	0	4	4	0	0	0	0	4
Wheeling Power Co - Distribution	57	5	62	69	31	12	112	174
Wheeling Power Co - Transmission	0	0	0	8	7	1	16	16
Cedar Coal Co	3	0	3	88	35	7	130	133
Central Coal Company	0	0	0	0	0	0	0	0
Central Ohio Coal	0	0	0	68	14	40	122	122
Southern Ohio Coal - Martinka	0	0	0	62	13	75	150	150
Southern Ohio Coal - Meigs	2	0	2	83	29	23	135	137
Windsor	0	0	0	33	7	18	58	58
Price River Coal	0	0	0	15	2	6	23	23
Houston Pipeline (HPL)	146	96	242	1	0	13	14	256
Total	12,508	2,464	14,972	8,984	2,331	3,656	14,971	29,943

AMERICAN ELECTRIC POWER
EAST RETIREMENT PLAN

ML-2

FUNDED STATUS OF PRESENT VALUE OF ACCUMULATED PLAN BENEFITS (FAS 35) AS OF JANUARY 1, 2005

Location	Present Value of Vested Benefits	Present Value of Non-Vested Benefits	Present Value of Accumulated Plan Benefits	Market Value of Assets	Percent Funded
AEP Energy Services, Inc.	\$892,103	\$9,609	\$901,712	\$1,064,242	118.0%
AEP Pro Serv, Inc.	64,185	0	64,185	107,115	166.9%
AEP T & D Services, LLC	0	0	0	0	0.0%
American Electric Power Service Corporation	606,646,273	30,993,718	637,639,991	708,226,260	111.1%
Appalachian Power Co - Distribution	233,566,930	5,706,148	239,273,078	249,125,507	104.1%
Appalachian Power Co - Generation	163,576,503	6,397,135	169,973,638	179,205,278	105.4%
Appalachian Power Co - Transmission	27,080,056	1,144,259	28,224,315	30,632,662	108.5%
C3 Communications, Inc.	13,646	0	13,646	22,625	165.8%
Cardinal Operating Company	43,374,438	1,607,740	44,982,178	47,167,534	104.9%
AEP Texas Central Company - Distribution	772,479	192,676	965,155	1,225,687	127.0%
AEP Texas Central Company - Generation	0	0	0	0	0.0%
AEP Texas Central Company - Nuclear	0	0	0	0	0.0%
AEP Texas Central Company - Transmission	172,919	29,331	202,250	242,996	120.1%
Columbus Southern Power Co - Distribution	178,227,214	3,445,165	181,672,379	187,618,122	103.3%
Columbus Southern Power Co - Generation	76,942,347	2,327,676	79,270,023	82,163,925	103.7%
Columbus Southern Power Co - Transmission	18,352,665	346,049	18,698,714	19,133,864	102.3%
Conesville Coal Preparation Company	1,911,897	123,905	2,035,802	2,161,776	106.2%
Cook Coal Terminal	1,899,518	42,503	1,942,021	2,077,041	107.0%
CSW Energy, Inc.	0	46,714	46,714	81,507	174.5%
Elmwood	460,193	141,201	601,394	735,086	122.2%
EnerShop Inc.	0	0	0	0	0.0%
Indiana Michigan Power Co - Distribution	121,007,930	2,890,372	123,898,302	128,597,551	103.8%
Indiana Michigan Power Co - Generation	63,319,676	2,360,066	65,679,742	71,025,676	108.1%
Indiana Michigan Power Co - Nuclear	92,063,606	6,913,010	98,976,616	113,130,097	114.3%
Indiana Michigan Power Co - Transmission	22,982,890	837,634	23,820,524	25,515,830	107.1%
Kentucky Power Co - Distribution	40,324,870	1,301,628	41,626,498	44,220,590	106.2%
Kentucky Power Co - Generation	19,713,956	852,289	20,566,245	21,947,241	106.7%
Kentucky Power Co - Transmission	3,740,834	270,392	4,011,226	4,592,935	114.5%
Kingsport Power Co - Distribution	8,849,217	198,080	9,047,297	9,496,475	105.0%
Kingsport Power Co - Transmission	1,835,650	76,171	1,911,821	1,974,271	103.3%
Memco	2,343,409	639,266	2,982,675	3,670,361	123.1%
Ohio Power Co - Distribution	175,869,420	4,100,245	179,969,665	186,473,549	103.6%
Ohio Power Co - Generation	149,131,810	4,606,483	153,738,293	161,433,252	105.0%
Ohio Power Co - Transmission	34,949,829	1,104,612	36,054,441	37,827,940	104.9%
Public Service Co of Oklahoma - Distribution	498,762	256,046	754,808	1,054,704	139.7%
Public Service Co of Oklahoma - Generation	115,441	143,198	258,639	375,870	145.3%
Public Service Co of Oklahoma - Transmission	280,213	8,479	288,692	310,048	107.4%
Southwestern Electric Power Co - Distribution	46,880	153,980	200,860	347,659	173.1%
Southwestern Electric Power Co - Generation	486,033	116,064	602,097	749,312	124.5%
Southwestern Electric Power Co - Texas - Distribution	605,809	34,080	639,889	677,095	105.8%
Southwestern Electric Power Co - Texas - Transmission	0	0	0	0	0.0%
Southwestern Electric Power Co - Transmission	118,713	26,893	145,606	171,692	117.9%
Water Transportation (Blackhawk)	18,179,775	1,017,128	19,196,903	20,462,636	106.6%
AEP Texas North Company - Distribution	87,510	53,549	141,059	213,818	151.6%
AEP Texas North Company - Generation	14,007	4,599	18,606	28,446	152.9%
AEP Texas North Company - Transmission	0	12,509	12,509	23,676	189.3%
Wheeling Power Co - Distribution	12,306,428	277,904	12,584,332	12,875,620	102.3%
Wheeling Power Co - Transmission	1,114,546	0	1,114,546	1,103,442	99.0%
Cedar Coal Co	3,641,024	10,878	3,651,902	3,653,743	100.1%
Central Coal Company	0	0	0	0	0.0%
Central Ohio Coal	8,497,275	0	8,497,275	8,824,110	103.8%
Southern Ohio Coal - Martinka	5,167,706	0	5,167,706	5,750,274	111.3%
Southern Ohio Coal - Meigs	9,671,255	26,210	9,697,465	10,163,644	104.8%
Windsor	3,110,303	0	3,110,303	3,327,447	107.0%
Price River Coal	384,535	0	384,535	403,494	104.9%
Houston Pipeline (HPL)	2,274,433	706,359	2,980,792	3,744,346	125.6%
Total	\$2,156,687,111	\$81,551,953	\$2,238,239,064	\$2,395,158,061	107.0%

AMERICAN ELECTRIC POWER
 EAST RETIREMENT PLAN
 SUMMARY OF FAS 87 VALUATION RESULTS AS OF JANUARY 1, 2005

ML-3

Location	Actives	Number of Participants Deferred Vested	Beneficiaries & Retirees	Total	Valuation Earnings	Service Cost	Accumulated Benefit Obligation	Projected Benefit Obligation	31-Dec-05 (Accrued)/Prepaid Pension Cost
AEP Energy Services, Inc.	4	39	2	45	\$388,787	\$23,673	\$1,313,731	\$1,317,116	(\$907,573)
AEP Pro Serv, Inc.	0	2	0	2	0	0	132,566	132,566	(60,455)
AEP T & D Services, LLC	0	0	0	0	0	0	0	0	(622)
American Electric Power Service Corporation	4,920	1,398	1,722	8,040	394,566,336	25,446,338	828,967,045	876,507,953	11,900,830
Appalachian Power Co - Distribution	1,239	314	1,707	3,260	81,859,331	5,471,818	302,088,538	308,320,236	19,697,491
Appalachian Power Co - Generation	1,083	100	810	1,993	77,316,985	5,433,651	215,572,606	221,786,258	10,484,335
Appalachian Power Co - Transmission	193	30	80	303	13,532,927	961,269	36,843,279	37,911,291	1,949,222
C3 Communications, Inc.	0	1	0	1	0	0	28,001	28,001	(67,226)
Cardinal Operating Company	250	26	180	456	18,130,219	1,294,570	56,714,859	58,375,016	1,854,635
AEP Texas Central Company - Distribution	92	0	3	95	4,053,933	174,335	1,318,470	1,516,922	(6,030)
AEP Texas Central Company - Generation	0	0	0	0	0	0	0	0	(8,740)
AEP Texas Central Company - Nuclear	0	0	0	0	0	0	0	0	0
AEP Texas Central Company - Transmission	10	0	0	10	580,212	28,236	263,061	300,721	1,776
Columbus Southern Power Co - Distribution	692	166	1,141	1,999	44,996,601	2,952,928	228,224,544	232,198,077	30,499,113
Columbus Southern Power Co - Generation	337	91	421	849	24,495,009	1,815,187	99,498,717	101,886,901	11,128,906
Columbus Southern Power Co - Transmission	49	14	95	158	3,267,302	238,797	23,328,827	23,680,263	3,283,315
Conesville Coal Preparation Company	13	0	5	18	1,236,808	89,770	2,539,959	2,675,435	(60,680)
Cook Coal Terminal	10	0	10	20	847,087	58,220	2,531,378	2,570,567	46,768
CSW Energy, Inc.	9	0	0	9	671,384	31,729	75,072	100,874	(8,939)
Elmwood	122	0	1	123	4,798,981	258,201	808,648	909,750	(39,897)
EnerShop Inc.	0	0	0	0	0	0	0	0	0
Indiana Michigan Power Co - Distribution	621	200	1,031	1,852	40,161,440	2,687,639	155,729,419	159,153,624	5,982,226
Indiana Michigan Power Co - Generation	421	181	359	961	30,771,297	2,131,410	85,360,274	87,902,091	2,189,667
Indiana Michigan Power Co - Nuclear	1,088	314	291	1,693	101,692,992	6,297,156	133,644,169	140,010,947	(879,757)
Indiana Michigan Power Co - Transmission	147	22	88	257	10,337,569	708,438	30,670,957	31,578,649	938,705
Kentucky Power Co - Distribution	252	83	259	594	17,291,137	1,193,392	53,448,932	54,727,847	2,149,319
Kentucky Power Co - Generation	138	19	88	245	9,945,923	716,891	26,526,256	27,162,126	887,495
Kentucky Power Co - Transmission	51	5	4	60	3,650,984	249,758	5,423,298	5,684,263	39,225
Kingsport Power Co - Distribution	51	18	61	130	3,389,081	222,481	11,486,330	11,752,934	1,250,643
Kingsport Power Co - Transmission	10	0	5	15	705,020	52,566	2,363,970	2,443,378	165,551
Memco	338	1	1	340	19,326,248	1,053,970	3,961,338	4,542,476	(1,475,003)
Ohio Power Co - Distribution	903	209	1,291	2,403	57,957,811	3,885,942	226,012,911	230,781,543	18,996,057
Ohio Power Co - Generation	809	175	792	1,776	57,532,913	4,009,304	195,343,195	199,791,419	12,296,429
Ohio Power Co - Transmission	197	26	141	364	14,218,701	1,005,928	45,663,967	46,816,240	3,686,431
Public Service Co of Oklahoma - Distribution	95	0	1	96	5,206,776	238,683	1,094,385	1,305,312	(28,483)
Public Service Co of Oklahoma - Generation	31	0	0	31	1,819,769	86,817	380,434	465,181	(16,705)
Public Service Co of Oklahoma - Transmission	3	0	1	4	164,458	7,681	378,045	383,719	18,485
Southwestern Electric Power Co - Distribution	72	0	0	72	3,209,602	139,373	315,171	430,267	(22,760)
Southwestern Electric Power Co - Generation	23	0	0	23	1,468,868	75,160	833,369	927,356	(6,477)
Southwestern Electric Power Co - Texas - Distribution	13	1	13	27	679,540	29,501	813,882	837,980	(3,477)
Southwestern Electric Power Co - Texas - Transmission	0	0	0	0	0	0	0	0	0
Southwestern Electric Power Co - Transmission	6	0	0	6	359,924	20,072	193,472	212,488	221
Water Transportation (Blackhawk)	338	26	147	511	16,266,205	949,223	24,506,796	25,324,765	(1,532,459)
AEP Texas North Company - Distribution	27	0	0	27	1,040,716	46,487	222,365	264,623	(8,902)
AEP Texas North Company - Generation	2	0	0	2	125,251	6,495	29,209	35,205	(1,922)
AEP Texas North Company - Transmission	4	0	0	4	217,893	9,049	20,461	29,302	(1,156)
Wheeling Power Co - Distribution	62	12	100	174	3,903,659	259,352	15,690,511	15,934,998	2,135,899
Wheeling Power Co - Transmission	0	1	15	16	0	0	1,365,631	1,365,631	238,210
Cedar Coal Co	3	7	123	133	102,100	6,729	4,521,690	4,521,909	1,835,829
Central Coal Company	0	0	0	0	0	0	0	0	3,979
Central Ohio Coal	0	40	82	122	0	0	10,920,807	10,920,807	183,815
Southern Ohio Coal - Martinka	0	75	75	150	0	0	7,116,597	7,116,597	109,009
Southern Ohio Coal - Meigs	2	23	112	137	134,605	10,657	12,542,420	12,578,629	232,934
Windsor	0	18	40	58	0	0	4,118,081	4,118,081	77,338
Price River Coal	0	6	17	23	0	0	499,368	499,368	192,170
Houston Pipeline (HPL)	242	13	1	256	19,618,230	1,167,934	4,149,548	4,634,040	(665,824)
Total	14,972	3,656	11,315	29,943	\$1,092,040,614	\$71,546,810	\$2,865,596,559	\$2,964,271,742	\$138,652,941

AMERICAN ELECTRIC POWER
 EAST RETIREMENT PLAN
 2005 CONTRIBUTION FUNDING POLICY

ML-5

Location	EOY				Quarterly Contribution to Be Made April 15, 2005	Quarterly Contribution to Be Made July 15, 2005	Quarterly Contribution to Be Made October 15, 2005	Final Contribution to Be Made EOY 2005	Total Plan Year 2005 Contribution
	EOY Accrued Benefit Obligation	Fair Value of Assets, Without Contributions Made December 31, 2005	Preliminary Contribution to Eliminate AOCI	Additional Contribution to Eliminate AOCI					
AEP Energy Services, Inc.	\$1,329,674	\$1,096,859	\$232,815	\$232,815	\$46,854	\$46,854	\$46,854	\$86,713	\$227,275
AEP Pro Serv, Inc.	134,175	110,682	23,493	23,493	4,728	4,728	4,728	8,750	22,934
AEP T & D Services, LLC	0	0	0	0	0	0	0	0	0
American Electric Power Service Corporation	839,027,093	692,120,350	146,906,743	146,906,743	29,564,671	29,564,671	29,564,671	54,716,052	143,410,061
Appalachian Power Co - Distribution	305,754,577	252,219,465	53,535,112	53,535,112	10,773,830	10,773,830	10,773,830	19,939,384	52,260,874
Appalachian Power Co - Generation	218,188,718	179,985,668	38,203,050	38,203,050	7,688,284	7,688,284	7,688,284	14,228,891	37,293,743
Appalachian Power Co - Transmission	37,290,396	30,761,154	6,529,242	6,529,242	1,313,996	1,313,996	1,313,996	2,431,844	6,373,832
C3 Communications, Inc.	28,341	23,379	4,962	4,962	999	999	999	1,848	4,845
Cardinal Operating Company	57,403,130	47,352,314	10,050,816	10,050,816	2,022,706	2,022,706	2,022,706	3,743,470	9,811,588
AEP Texas Central Company - Distribution	1,334,470	1,100,816	233,654	233,654	47,022	47,022	47,022	87,025	228,091
AEP Texas Central Company - Generation	0	0	0	0	0	0	0	0	0
AEP Texas Central Company - Nuclear	0	0	0	0	0	0	0	0	0
AEP Texas Central Company - Transmission	266,263	219,635	46,618	46,618	9,382	9,382	9,382	17,363	45,509
Columbus Southern Power Co - Distribution	230,994,196	190,549,012	40,445,184	40,445,184	8,139,509	8,139,509	8,139,509	15,063,984	39,482,511
Columbus Southern Power Co - Generation	100,706,198	83,073,371	17,632,827	17,632,827	3,548,570	3,548,570	3,548,570	6,567,423	17,213,133
Columbus Southern Power Co - Transmission	23,611,937	19,477,681	4,134,256	4,134,256	832,010	832,010	832,010	1,539,822	4,035,852
Conesville Coal Preparation Company	2,570,783	2,120,660	450,123	450,123	90,586	90,586	90,586	167,650	439,408
Cook Coal Terminal	2,562,098	2,113,496	448,602	448,602	90,280	90,280	90,280	167,084	437,924
CSW Energy, Inc.	75,983	62,679	13,304	13,304	2,677	2,677	2,677	4,955	12,986
Elmwood	818,461	675,156	143,305	143,305	28,840	28,840	28,840	53,375	139,895
EnerShop, Inc.	0	0	0	0	0	0	0	0	0
Indiana Michigan Power Co - Distribution	157,619,296	130,021,453	27,597,843	27,597,843	5,554,008	5,554,008	5,554,008	10,278,936	26,940,960
Indiana Michigan Power Co - Generation	86,396,176	71,268,916	15,127,260	15,127,260	3,044,330	3,044,330	3,044,330	5,634,213	14,767,203
Indiana Michigan Power Co - Nuclear	135,266,027	111,582,058	23,683,969	23,683,969	4,766,349	4,766,349	4,766,349	8,821,197	23,120,244
Indiana Michigan Power Co - Transmission	31,043,169	25,607,765	5,435,404	5,435,404	1,093,864	1,093,864	1,093,864	2,024,440	5,306,032
Kentucky Power Co - Distribution	54,097,569	44,625,530	9,472,039	9,472,039	1,906,228	1,906,228	1,906,228	3,527,902	9,246,586
Kentucky Power Co - Generation	26,848,169	22,147,276	4,700,893	4,700,893	946,045	946,045	946,045	1,750,868	4,589,003
Kentucky Power Co - Transmission	5,489,113	4,528,015	961,098	961,098	193,419	193,419	193,419	357,965	938,222
Kingsport Power Co - Distribution	11,625,724	9,590,155	2,035,569	2,035,569	409,654	409,654	409,654	758,156	1,987,118
Kingsport Power Co - Transmission	2,392,658	1,973,724	418,934	418,934	84,310	84,310	84,310	156,034	408,964
Memo	4,009,411	3,307,396	702,015	702,015	141,279	141,279	141,279	261,469	685,306
Ohio Power Co - Distribution	228,755,723	188,702,477	40,053,246	40,053,246	8,060,632	8,060,632	8,060,632	14,918,005	39,099,901
Ohio Power Co - Generation	197,713,810	163,095,748	34,618,062	34,618,062	6,966,813	6,966,813	6,966,813	12,893,647	33,794,086
Ohio Power Co - Transmission	46,218,129	38,125,714	8,092,415	8,092,415	1,628,582	1,628,582	1,628,582	3,014,055	7,899,801
Public Service Co of Oklahoma - Distribution	1,107,666	913,723	193,943	193,943	39,031	39,031	39,031	72,235	189,328
Public Service Co of Oklahoma - Generation	385,051	317,632	67,419	67,419	13,568	13,568	13,568	25,110	65,814
Public Service Co of Oklahoma - Transmission	382,633	315,637	66,996	66,996	13,483	13,483	13,483	24,953	65,402
Southwestern Electric Power Co - Distribution	318,996	263,142	55,854	55,854	11,241	11,241	11,241	20,803	54,526
Southwestern Electric Power Co - Generation	843,482	695,796	147,686	147,686	29,721	29,721	29,721	55,006	144,169
Southwestern Electric Power Co - Texas - Distribution	823,759	679,526	144,233	144,233	29,027	29,027	29,027	53,720	140,801
Southwestern Electric Power Co - Texas - Transmission	0	0	0	0	0	0	0	0	0
Southwestern Electric Power Co - Transmission	195,820	161,533	34,287	34,287	6,900	6,900	6,900	12,770	33,470
Water Transportation (Blackhawk)	24,804,202	20,461,190	4,343,012	4,343,012	874,022	874,022	874,022	1,617,574	4,239,640
AEP Texas North Company - Distribution	225,064	185,657	39,407	39,407	7,931	7,931	7,931	14,677	38,470
AEP Texas North Company - Generation	29,563	24,387	5,176	5,176	1,042	1,042	1,042	1,928	5,054
AEP Texas North Company - Transmission	20,709	17,083	3,626	3,626	730	730	730	1,351	3,541
Wheeling Power Co - Distribution	15,880,925	13,100,306	2,780,619	2,780,619	559,594	559,594	559,594	1,035,654	2,714,436
Wheeling Power Co - Transmission	1,382,204	1,140,191	242,013	242,013	48,705	48,705	48,705	90,139	236,254
Cedar Coal Co	4,576,564	3,775,245	801,319	801,319	161,264	161,264	161,264	298,455	782,247
Central Coal Company	0	0	0	0	0	0	0	0	0
Central Ohio Coal	11,053,338	9,117,989	1,935,349	1,935,349	389,485	389,485	389,485	720,829	1,889,284
Southern Ohio Coal - Martinika	7,202,961	5,941,782	1,261,179	1,261,179	253,810	253,810	253,810	469,732	1,231,162
Southern Ohio Coal - Meigs	12,694,630	10,471,905	2,222,725	2,222,725	447,319	447,319	447,319	827,864	2,169,821
Windsor	4,168,057	3,438,264	729,793	729,793	146,869	146,869	146,869	271,815	712,422
Price River Coal	505,428	416,932	88,496	88,496	17,810	17,810	17,810	32,961	86,391
Houston Pipeline (HPL)	4,199,905	3,464,537	735,368	735,368	147,991	147,991	147,991	273,891	717,864
Total	\$2,900,372,414	\$2,392,541,061	\$507,831,353	\$507,831,353	\$102,200,000	\$102,200,000	\$102,200,000	\$189,143,987	\$495,743,983

AMERICAN ELECTRIC POWER
 EAST RETIREMENT PLAN
 10-YEAR CONTRIBUTION FORECAST

ML-7

Location	Estimated Plan Year Contributions For Qualified Plans										
	2005	2006	2007	2008	2009	2010	2011	2012	2013	2014	2015
AEP Energy Services, Inc.	\$227,275	\$0	\$0	\$1,742	\$3,342	\$4,973	\$0	\$0	\$0	\$3,176	\$6,358
AEP Communications	0	0	0	0	0	0	0	0	0	0	0
AEP Pro Serv, Inc.	22,934	0	0	176	338	503	0	0	0	322	643
AEP T & D Services, LLC	0	0	0	0	0	0	0	0	0	0	0
American Electric Power Service Corporation	143,410,061	0	0	1,098,691	2,108,564	3,137,597	0	0	0	2,003,741	4,011,596
Appalachian Power Co - Distribution	52,260,874	0	0	400,380	768,394	1,143,389	0	0	0	730,195	1,461,889
Appalachian Power Co - Generation	37,293,743	0	0	285,714	548,332	815,931	0	0	0	521,072	1,043,214
Appalachian Power Co - Transmission	6,373,832	0	0	48,832	93,716	139,451	0	0	0	89,057	178,296
C3 Communications, Inc.	4,845	0	0	38	72	106	0	0	0	68	137
Cardinal Operating Company	9,811,588	0	0	75,169	144,261	214,664	0	0	0	137,089	274,459
AEP Texas Central Company - Distribution	228,091	0	0	1,746	3,353	4,990	0	0	0	3,187	6,380
AEP Texas Central Company - Generation	0	0	0	0	0	0	0	0	0	0	0
AEP Texas Central Company - Nuclear	0	0	0	0	0	0	0	0	0	0	0
AEP Texas Central Company - Transmission	45,509	0	0	350	670	997	0	0	0	636	1,273
Columbus Southern Power Co - Distribution	39,482,511	0	0	302,482	580,512	863,817	0	0	0	551,653	1,104,439
Columbus Southern Power Co - Generation	17,213,133	0	0	131,872	253,085	376,597	0	0	0	240,504	481,501
Columbus Southern Power Co - Transmission	4,035,852	0	0	30,920	59,340	88,299	0	0	0	56,391	112,896
Conesville Coal Preparation Company	439,408	0	0	3,367	6,461	9,614	0	0	0	6,140	12,292
Cook Coal Terminal	437,924	0	0	3,356	6,440	9,582	0	0	0	6,120	12,251
CSW Energy, Inc.	12,986	0	0	99	190	284	0	0	0	183	365
Elmwood	139,895	0	0	1,072	2,057	3,061	0	0	0	1,955	3,914
EnerShop Inc.	0	0	0	0	0	0	0	0	0	0	0
Indiana Michigan Power Co - Distribution	26,940,960	0	0	206,401	396,115	589,429	0	0	0	376,425	753,620
Indiana Michigan Power Co - Generation	14,767,203	0	0	113,135	217,123	323,085	0	0	0	206,329	413,081
Indiana Michigan Power Co - Nuclear	23,120,244	0	0	177,128	339,938	505,836	0	0	0	323,039	646,741
Indiana Michigan Power Co - Transmission	5,306,032	0	0	40,650	78,015	116,089	0	0	0	74,136	148,425
Kentucky Power Co - Distribution	9,246,586	0	0	70,841	135,953	202,302	0	0	0	129,196	258,656
Kentucky Power Co - Generation	4,589,003	0	0	35,158	67,473	100,401	0	0	0	64,119	128,368
Kentucky Power Co - Transmission	938,222	0	0	7,188	13,795	20,527	0	0	0	13,109	26,245
Kingsport Power Co - Distribution	1,987,118	0	0	15,223	29,216	43,475	0	0	0	27,763	55,585
Kingsport Power Co - Transmission	408,964	0	0	3,134	6,013	8,947	0	0	0	5,714	11,439
Memo	685,306	0	0	5,250	10,076	14,993	0	0	0	9,574	19,169
Ohio Power Co - Distribution	39,099,901	0	0	299,552	574,888	855,448	0	0	0	546,310	1,093,739
Ohio Power Co - Generation	33,794,086	0	0	258,904	496,877	739,365	0	0	0	472,176	945,320
Ohio Power Co - Transmission	7,899,801	0	0	60,522	116,151	172,836	0	0	0	110,376	220,980
Public Service Co of Oklahoma - Distribution	189,328	0	0	1,450	2,783	4,142	0	0	0	2,645	5,296
Public Service Co of Oklahoma - Generation	65,814	0	0	503	966	1,439	0	0	0	919	1,840
Public Service Co of Oklahoma - Transmission	65,402	0	0	500	961	1,430	0	0	0	912	1,828
Southwestern Electric Power Co - Distribution	54,526	0	0	417	800	1,192	0	0	0	760	1,524
Southwestern Electric Power Co - Generation	144,169	0	0	1,106	2,121	3,155	0	0	0	2,016	4,034
Southwestern Electric Power Co - Texas - Distribution	140,801	0	0	1,077	2,069	3,079	0	0	0	1,965	3,936
Southwestern Electric Power Co - Texas - Transmission	0	0	0	0	0	0	0	0	0	0	0
Southwestern Electric Power Co - Transmission	33,470	0	0	256	492	732	0	0	0	466	934
Water Transportation (Blackhawk)	4,239,640	0	0	32,481	62,336	92,758	0	0	0	59,237	118,596
AEP Texas North Company - Distribution	38,470	0	0	295	566	842	0	0	0	538	1,076
AEP Texas North Company - Generation	5,054	0	0	40	76	112	0	0	0	72	143
AEP Texas North Company - Transmission	3,541	0	0	28	53	78	0	0	0	50	99
Wheeling Power Co - Distribution	2,714,436	0	0	20,796	39,910	59,388	0	0	0	37,927	75,931
Wheeling Power Co - Transmission	236,254	0	0	1,811	3,474	5,169	0	0	0	3,301	6,609
Cedar Coal Co	782,247	0	0	5,992	11,500	17,113	0	0	0	10,927	21,880
Central Coal Company	0	0	0	0	0	0	0	0	0	0	0
Central Ohio Coal	1,889,284	0	0	14,474	27,778	41,335	0	0	0	26,397	52,848
Southern Ohio Coal - Martinka	1,231,162	0	0	9,432	18,102	26,936	0	0	0	17,201	34,438
Southern Ohio Coal - Meigs	2,169,821	0	0	16,623	31,902	47,472	0	0	0	30,316	60,696
Windsor	712,422	0	0	5,458	10,474	15,586	0	0	0	9,954	19,929
Price River Coal	86,391	0	0	661	1,269	1,889	0	0	0	1,206	2,415
Houston Pipeline (HPL)	717,864	0	0	5,500	10,556	15,707	0	0	0	10,031	20,082
Total	\$495,743,983	\$0	\$0	\$3,797,992	\$7,288,948	\$10,846,142	\$0	\$0	\$0	\$6,926,595	\$13,867,405
Current Liability Interest Rate	6.10%	5.13%	4.99%	4.92%	4.89%	4.89%	4.89%	4.89%	4.89%	4.89%	4.89%



AMERICAN ELECTRIC POWER
EAST RETIREMENT PLAN
ESTIMATED 2006 NET PERIODIC PENSION COST

ML-8

Location	Service Cost	Projected Benefit Obligation	Market-Related Value of Assets	Interest Cost	Expected Return on Assets	Initial Transition (Asset)/ Obligation	Prior Service Cost	Gain/Loss Amortization	Net Periodic Pension Cost
AEP Energy Services, Inc.	\$24,620	\$1,330,365	\$1,298,819	\$72,063	(\$109,566)	\$0	\$3,507	\$14,900	\$3,772
AEP Communications	0	0	0	0	0	0	0	0	0
AEP Pro Serv, Inc.	0	133,900	131,061	7,121	(11,056)	0	83	1,500	(2,258)
AEP T & D Services, LLC	0	0	0	0	0	0	0	0	0
American Electric Power Service Corporation	26,464,191	885,324,953	819,557,446	48,492,328	(69,136,537)	0	1,083,071	9,915,288	16,903,828
Appalachian Power Co - Distribution	5,690,691	311,421,702	298,659,534	16,865,213	(25,194,434)	0	426,781	3,487,799	1,260,321
Appalachian Power Co - Generation	5,650,997	224,017,258	213,125,643	12,214,610	(17,978,934)	0	299,584	2,508,904	2,691,262
Appalachian Power Co - Transmission	999,720	38,292,650	36,425,071	2,089,714	(3,072,760)	0	50,524	428,862	496,079
C3 Communications, Inc.	0	28,283	27,683	1,504	(2,335)	0	136	317	(477)
Cardinal Operating Company	1,346,353	58,962,224	56,071,089	3,207,434	(4,730,066)	0	77,711	660,353	561,899
AEP Texas Central Company - Distribution	181,308	1,532,181	1,303,504	91,130	(109,961)	0	1,488	17,160	181,659
AEP Texas Central Company - Generation	0	0	0	0	0	0	250	0	0
AEP Texas Central Company - Nuclear	0	0	0	0	0	0	0	0	0
AEP Texas Central Company - Transmission	29,365	303,746	260,075	17,716	(21,940)	0	340	3,402	28,945
Columbus Southern Power Co - Distribution	3,071,045	234,533,812	225,633,969	12,636,707	(19,034,116)	0	330,849	2,626,686	(390,112)
Columbus Southern Power Co - Generation	1,887,794	102,709,794	98,369,308	5,562,888	(8,298,275)	0	140,738	1,150,309	438,284
Columbus Southern Power Co - Transmission	248,349	23,918,468	23,064,021	1,285,281	(1,945,643)	0	33,646	267,877	(112,566)
Conesville Coal Preparation Company	93,361	2,702,348	2,511,128	148,686	(211,835)	0	3,421	30,265	64,044
Cook Coal Terminal	60,549	2,596,425	2,502,644	141,308	(211,119)	0	3,392	29,079	23,244
CSW Energy, Inc.	32,998	101,889	74,220	7,174	(6,261)	0	77	1,141	35,186
Elmwood	268,529	918,901	799,469	63,152	(67,442)	0	908	10,291	275,743
EnerShop Inc.	0	0	0	0	0	0	0	0	0
Indiana Michigan Power Co - Distribution	2,795,145	160,754,588	153,961,735	8,698,181	(12,987,962)	0	221,690	1,800,388	517,934
Indiana Michigan Power Co - Generation	2,216,666	88,786,319	84,391,350	4,839,876	(7,119,117)	0	116,852	994,371	1,048,988
Indiana Michigan Power Co - Nuclear	6,549,042	141,419,350	132,127,175	7,869,508	(11,146,034)	0	181,041	1,583,841	5,043,019
Indiana Michigan Power Co - Transmission	736,776	31,896,306	30,322,811	1,735,548	(2,557,983)	0	42,417	357,226	313,667
Kentucky Power Co - Distribution	1,241,128	55,278,367	52,842,233	3,005,916	(4,457,685)	0	74,313	619,096	481,418
Kentucky Power Co - Generation	745,567	27,435,356	26,225,156	1,498,766	(2,212,312)	0	36,621	307,265	375,499
Kentucky Power Co - Transmission	259,748	5,741,442	5,361,738	319,166	(452,308)	0	7,160	64,302	198,486
Kingsport Power Co - Distribution	231,380	11,871,160	11,355,949	643,658	(957,969)	0	16,757	132,952	65,690
Kingsport Power Co - Transmission	54,669	2,467,957	2,337,136	134,163	(197,157)	0	3,190	27,640	22,572
LIG Liquids Company, L.L.C.	0	0	0	0	0	0	0	0	0
Louisiana Intrastate Gas Company, L.L.C	0	0	0	0	0	0	0	0	0
Memco	1,096,129	4,588,170	3,916,372	302,312	(330,379)	0	3,032	51,386	1,125,504
Ohio Power Co - Distribution	4,041,380	233,103,029	223,447,439	12,612,219	(18,849,664)	0	321,472	2,610,661	722,274
Ohio Power Co - Generation	4,169,676	201,801,168	193,125,855	10,954,293	(16,291,784)	0	276,027	2,260,093	1,358,640
Ohio Power Co - Transmission	1,046,165	47,287,176	45,145,636	2,570,546	(3,808,413)	0	66,811	529,598	400,312
Public Service Co of Oklahoma - Distribution	248,230	1,318,442	1,081,963	83,321	(91,273)	0	1,186	14,766	256,785
Public Service Co of Oklahoma - Generation	90,290	469,860	376,116	29,791	(31,729)	0	355	5,262	94,234
Public Service Co of Oklahoma - Transmission	7,988	387,579	373,754	21,038	(31,529)	0	525	4,341	2,349
Southwestern Electric Power Co - Distribution	144,948	434,595	311,594	30,822	(26,286)	0	312	4,867	154,926
Southwestern Electric Power Co - Generation	78,166	936,684	823,909	53,974	(69,504)	0	569	10,490	74,363
Southwestern Electric Power Co - Texas - Distribution	30,681	846,409	804,644	46,647	(67,878)	0	866	9,479	20,046
Southwestern Electric Power Co - Texas - Transmission	0	0	0	0	0	0	0	0	0
Southwestern Electric Power Co - Transmission	20,875	214,625	191,276	12,525	(16,136)	0	242	2,404	19,951
Water Transportation (Blackhawk)	987,192	25,579,513	24,228,620	1,412,916	(2,043,887)	0	36,959	286,480	676,464
AEP Texas North Company - Distribution	48,346	267,285	219,841	16,786	(18,545)	0	278	2,993	49,934
AEP Texas North Company - Generation	6,755	35,559	28,877	2,250	(2,436)	0	177	398	7,014
AEP Texas North Company - Transmission	9,411	29,597	20,228	2,075	(1,706)	0	15	331	10,150
Wheeling Power Co - Distribution	269,726	16,095,292	15,512,408	870,352	(1,308,602)	0	22,245	180,261	32,982
Wheeling Power Co - Transmission	0	1,379,368	1,350,130	73,360	(113,895)	0	1,990	15,448	(23,266)
Cedar Coal Co	6,998	4,567,396	4,470,365	243,283	(377,113)	0	9,545	51,153	(69,650)
Central Coal Company	0	0	0	0	0	0	0	0	0
Central Ohio Coal	0	11,030,662	10,796,845	586,652	(910,804)	0	14,249	123,539	(186,054)
Southern Ohio Coal - Martinka	0	7,188,185	7,035,816	382,294	(593,530)	0	8,450	80,505	(121,243)
Southern Ohio Coal - Meigs	11,083	12,705,160	12,400,051	676,297	(1,046,048)	0	18,057	142,293	(199,605)
Windsor	0	4,159,506	4,071,337	221,218	(343,451)	0	5,995	46,585	(70,158)
Price River Coal	0	504,391	493,700	26,825	(41,648)	0	1,195	5,649	(8,508)
Houston Pipeline (HPL)	0	4,680,655	4,102,446	248,935	(346,076)	0	4,862	52,421	(38,542)
Total	\$73,194,031	\$2,994,090,050	\$2,833,069,189	\$163,129,542	(\$238,993,122)	\$0	\$3,951,960	\$33,532,619	\$34,815,028

AMERICAN ELECTRIC POWER
 EAST RETIREMENT PLAN
 ESTIMATED 2008 NET PERIODIC PENSION COST

ML-10

Location	Service Cost	Projected Benefit Obligation	Market-Related Value of Assets	Interest Cost	Expected Return on Assets	Initial Transition (Asset)/ Obligation	Prior Service Cost	Gain/Loss Amortization	Net Periodic Pension Cost
AEP Energy Services, Inc.	\$26,629	\$1,353,881	\$1,351,278	\$73,268	(\$113,826)	\$0	\$3,299	\$10,211	(\$2,065)
AEP Communications	0	0	0	0	0	0	0	0	0
AEP Pro Serv, Inc.	0	136,266	136,354	7,232	(11,486)	0	78	1,028	(3,060)
AEP T & D Services, LLC	0	0	0	0	0	0	0	0	0
American Electric Power Service Corporation	28,623,670	900,974,327	852,658,885	49,337,006	(71,824,207)	0	1,018,927	6,795,332	14,031,151
Appalachian Power Co - Distribution	6,155,051	316,926,522	310,722,215	17,147,065	(26,173,863)	0	401,505	2,390,324	(94,715)
Appalachian Power Co - Generation	6,112,118	227,977,081	221,733,661	12,423,930	(18,677,861)	0	281,841	1,719,450	1,855,809
Appalachian Power Co - Transmission	1,081,297	38,969,526	37,896,258	2,125,637	(3,192,213)	0	47,532	293,916	356,187
C3 Communications, Inc.	0	28,783	28,801	1,528	(2,426)	0	128	217	(646)
Cardinal Operating Company	1,456,215	60,004,465	58,335,767	3,261,933	(4,913,947)	0	73,109	452,566	329,983
AEP Texas Central Company - Distribution	196,103	1,559,265	1,356,152	93,163	(114,236)	0	1,400	11,760	188,693
AEP Texas Central Company - Generation	0	0	0	0	0	0	235	0	0
AEP Texas Central Company - Nuclear	0	0	0	0	0	0	0	0	0
AEP Texas Central Company - Transmission	31,762	309,115	270,579	18,092	(22,792)	0	320	2,331	29,769
Columbus Southern Power Co - Distribution	3,321,642	238,679,530	234,747,191	12,843,846	(19,774,063)	0	311,254	1,800,170	(1,517,174)
Columbus Southern Power Co - Generation	2,041,839	104,525,335	102,342,386	5,655,891	(8,620,869)	0	132,403	788,351	(7,248)
Columbus Southern Power Co - Transmission	268,614	24,341,261	23,995,563	1,306,132	(2,021,280)	0	31,653	183,587	(233,246)
Conesville Coal Preparation Company	100,979	2,750,116	2,612,551	151,318	(220,070)	0	3,218	20,742	56,324
Cook Coal Terminal	65,490	2,642,320	2,603,724	143,713	(219,326)	0	3,191	19,929	13,029
CSW Energy, Inc.	35,691	103,690	77,218	7,397	(6,504)	0	72	782	37,492
Elmwood	290,441	935,144	831,759	65,046	(70,064)	0	854	7,053	293,617
EnerShop Inc.	0	0	0	0	0	0	0	0	0
Indiana Michigan Power Co - Distribution	3,023,228	163,596,153	160,180,158	8,843,071	(13,492,867)	0	208,560	1,233,875	(193,075)
Indiana Michigan Power Co - Generation	2,397,546	90,355,743	87,799,867	4,922,740	(7,395,872)	0	109,931	681,481	716,147
Indiana Michigan Power Co - Nuclear	7,083,444	143,919,138	137,463,713	8,014,233	(11,579,334)	0	170,319	1,085,467	4,779,418
Indiana Michigan Power Co - Transmission	796,896	32,460,119	31,547,531	1,765,066	(2,657,424)	0	39,905	244,821	188,966
Kentucky Power Co - Distribution	1,342,404	56,255,491	54,976,499	3,056,921	(4,630,977)	0	69,912	424,290	261,280
Kentucky Power Co - Generation	806,405	27,920,315	27,284,374	1,524,627	(2,298,315)	0	34,452	210,581	277,366
Kentucky Power Co - Transmission	280,944	5,842,930	5,578,295	325,015	(469,891)	0	6,736	44,069	187,266
Kingsport Power Co - Distribution	250,261	12,080,999	11,814,609	654,463	(995,210)	0	15,765	91,117	15,372
Kingsport Power Co - Transmission	59,130	2,511,581	2,431,532	136,437	(204,821)	0	3,001	18,943	12,752
LIG Liquids Company, L.L.C.	0	0	0	0	0	0	0	0	0
Louisiana Intrastate Gas Company, L.L.C	0	0	0	0	0	0	0	0	0
Memco	1,185,573	4,669,272	4,074,552	310,737	(343,222)	0	2,852	35,217	1,194,002
Ohio Power Co - Distribution	4,371,156	237,223,455	232,472,349	12,822,268	(19,582,441)	0	302,433	1,789,188	(310,374)
Ohio Power Co - Generation	4,509,922	205,368,290	200,926,094	11,138,968	(16,925,124)	0	259,679	1,548,929	523,282
Ohio Power Co - Transmission	1,131,532	48,123,043	46,969,041	2,614,112	(3,956,464)	0	62,854	362,954	210,853
Public Service Co of Oklahoma - Distribution	268,486	1,341,748	1,125,663	85,461	(94,821)	0	1,116	10,120	270,883
Public Service Co of Oklahoma - Generation	97,657	478,166	391,307	30,561	(32,962)	0	334	3,606	99,446
Public Service Co of Oklahoma - Transmission	8,640	394,430	388,850	21,392	(32,755)	0	494	2,975	734
Southwestern Electric Power Co - Distribution	156,776	442,277	324,179	31,794	(27,307)	0	294	3,336	165,137
Southwestern Electric Power Co - Generation	84,545	953,242	857,186	55,079	(72,206)	0	535	7,190	75,771
Southwestern Electric Power Co - Texas - Distribution	33,185	861,371	837,143	47,477	(70,517)	0	815	6,497	17,692
Southwestern Electric Power Co - Texas - Transmission	0	0	0	0	0	0	0	0	0
Southwestern Electric Power Co - Transmission	22,578	218,419	199,002	12,791	(16,763)	0	228	1,647	20,520
Water Transportation (Blackhawk)	1,067,747	26,031,667	25,207,200	1,438,260	(2,123,343)	0	34,770	196,336	610,764
AEP Texas North Company - Distribution	52,292	272,010	228,720	17,212	(19,266)	0	262	2,052	52,620
AEP Texas North Company - Generation	7,306	36,188	30,043	2,308	(2,531)	0	167	273	7,401
AEP Texas North Company - Transmission	10,179	30,120	21,045	2,139	(1,773)	0	14	227	10,809
Wheeling Power Co - Distribution	291,736	16,379,799	16,138,945	884,816	(1,359,473)	0	20,928	123,540	(39,395)
Wheeling Power Co - Transmission	0	1,403,750	1,404,661	74,502	(118,322)	0	1,872	10,587	(31,520)
Cedar Coal Co	7,569	4,648,131	4,650,920	247,094	(391,773)	0	8,980	35,057	(96,381)
Central Coal Company	0	0	0	0	0	0	0	0	0
Central Ohio Coal	0	11,225,645	11,232,923	595,784	(946,212)	0	13,405	84,666	(252,064)
Southern Ohio Coal - Martinka	0	7,315,246	7,319,988	388,246	(616,603)	0	7,950	55,173	(164,259)
Southern Ohio Coal - Meigs	11,988	12,929,742	12,900,882	686,863	(1,086,713)	0	16,988	97,519	(274,567)
Windsor	0	4,233,031	4,235,776	224,662	(356,803)	0	5,640	31,926	(95,050)
Price River Coal	0	513,307	513,640	27,243	(43,267)	0	1,124	3,871	(11,526)
Houston Pipeline (HPL)	0	4,763,392	4,268,141	252,810	(359,529)	0	4,574	35,926	(64,981)
Total	\$79,166,664	\$3,047,014,837	\$2,947,495,173	\$165,917,349	(\$248,283,936)	\$0	\$3,717,906	\$22,981,206	\$23,499,189



AMERICAN ELECTRIC POWER
EAST RETIREMENT PLAN
ESTIMATED 2015 NET PERIODIC PENSION COST

ML-17

Location	Service Cost	Projected Benefit Obligation	Market-Related Value of Assets	Interest Cost	Expected Return on Assets	Initial Transition (Asset)/ Obligation	Prior Service Cost	Gain/Loss Amortization	Net Periodic Pension Cost
AEP Energy Services, Inc.	\$29,489	\$1,344,181	\$1,377,190	\$72,437	(\$115,337)	\$0	\$16	\$5,481	(\$7,923)
AEP Communications	0	0	0	0	0	0	0	0	0
AEP Pro Serv, Inc.	0	135,290	138,969	7,134	(11,638)	0	0	552	(3,952)
AEP T & D Services, LLC	0	0	0	0	0	0	0	0	0
American Electric Power Service Corporation	31,697,779	894,519,153	869,009,971	48,841,516	(72,778,032)	0	4,841	3,647,327	11,413,815
Appalachian Power Co - Distribution	6,816,088	314,655,852	316,680,806	16,951,943	(26,521,451)	0	1,908	1,282,983	(1,468,600)
Appalachian Power Co - Generation	6,768,544	226,343,703	225,985,756	12,292,537	(18,925,903)	0	1,339	922,898	1,059,397
Appalachian Power Co - Transmission	1,197,425	38,690,323	38,622,979	2,103,371	(3,234,605)	0	226	157,757	224,174
C3 Communications, Inc.	0	28,576	29,353	1,507	(2,458)	0	1	117	(835)
Cardinal Operating Company	1,612,609	59,574,553	59,454,448	3,226,538	(4,979,204)	0	347	242,910	103,201
AEP Texas Central Company - Distribution	217,164	1,548,093	1,382,158	93,086	(115,753)	0	7	6,312	200,818
AEP Texas Central Company - Generation	0	0	0	0	0	0	1	0	0
AEP Texas Central Company - Nuclear	0	0	0	0	0	0	0	0	0
AEP Texas Central Company - Transmission	35,173	306,900	275,768	18,038	(23,095)	0	2	1,251	31,369
Columbus Southern Power Co - Distribution	3,678,378	236,969,472	239,248,841	12,689,906	(20,036,663)	0	1,479	966,223	(2,700,771)
Columbus Southern Power Co - Generation	2,261,127	103,776,446	104,304,963	5,591,601	(8,735,354)	0	629	423,140	(458,880)
Columbus Southern Power Co - Transmission	297,463	24,166,864	24,455,716	1,290,059	(2,048,123)	0	150	98,538	(361,921)
Conesville Coal Preparation Company	111,824	2,730,412	2,662,651	149,878	(222,992)	0	15	11,133	49,858
Cook Coal Terminal	72,523	2,623,389	2,653,655	142,162	(222,239)	0	15	10,697	3,158
CSW Energy, Inc.	39,524	102,947	78,698	7,513	(6,591)	0	4	420	40,866
Elmwood	321,634	928,444	847,709	65,919	(70,994)	0	4	3,786	320,350
EnerShop Inc.	0	0	0	0	0	0	0	0	0
Indiana Michigan Power Co - Distribution	3,347,915	162,424,042	163,251,867	8,741,531	(13,672,052)	0	991	662,271	(919,387)
Indiana Michigan Power Co - Generation	2,655,037	89,708,375	89,483,568	4,870,532	(7,494,089)	0	522	365,778	397,782
Indiana Michigan Power Co - Nuclear	7,844,188	142,888,006	140,099,798	7,948,450	(11,733,108)	0	809	582,614	4,642,979
Indiana Michigan Power Co - Transmission	882,481	32,227,553	32,152,505	1,745,967	(2,692,715)	0	190	131,405	67,327
Kentucky Power Co - Distribution	1,486,574	55,852,439	56,030,761	3,023,616	(4,692,476)	0	332	227,734	45,774
Kentucky Power Co - Generation	893,011	27,720,276	27,807,596	1,508,843	(2,328,836)	0	164	113,027	186,207
Kentucky Power Co - Transmission	311,116	5,801,068	5,685,268	322,309	(476,131)	0	32	23,653	180,982
Kingsport Power Co - Distribution	277,138	11,994,443	12,041,173	647,108	(1,008,427)	0	75	48,906	(35,204)
Kingsport Power Co - Transmission	65,480	2,493,587	2,478,160	134,945	(207,541)	0	14	10,167	3,066
LIG Liquids Company, L.L.C.	0	0	0	0	0	0	0	0	0
Louisiana Intrastate Gas Company, L.L.C	0	0	0	0	0	0	0	0	0
Memco	1,312,900	4,635,819	4,152,688	313,689	(347,780)	0	14	18,902	1,297,739
Ohio Power Co - Distribution	4,840,607	235,523,830	236,930,374	12,674,961	(19,842,495)	0	1,437	960,329	(1,365,223)
Ohio Power Co - Generation	4,994,276	203,896,896	204,779,170	11,015,304	(17,149,889)	0	1,234	831,373	(307,746)
Ohio Power Co - Transmission	1,253,056	47,778,258	47,869,747	2,585,532	(4,009,006)	0	299	194,812	24,673
Public Service Co of Oklahoma - Distribution	297,321	1,332,135	1,147,249	85,925	(96,080)	0	5	5,432	292,605
Public Service Co of Oklahoma - Generation	108,145	474,740	398,811	30,737	(33,400)	0	2	1,936	107,421
Public Service Co of Oklahoma - Transmission	9,568	391,604	396,307	21,155	(33,190)	0	2	1,597	(868)
Southwestern Electric Power Co - Distribution	173,613	439,108	330,396	32,310	(27,670)	0	1	1,790	180,046
Southwestern Electric Power Co - Generation	93,625	946,412	873,624	54,843	(73,164)	0	3	3,859	79,168
Southwestern Electric Power Co - Texas - Distribution	36,749	855,199	853,197	47,034	(71,454)	0	4	3,487	15,821
Southwestern Electric Power Co - Texas - Transmission	0	0	0	0	0	0	0	0	0
Southwestern Electric Power Co - Transmission	25,003	216,854	202,818	12,754	(16,986)	0	1	884	21,657
Water Transportation (Blackhawk)	1,182,420	25,845,159	25,690,588	1,425,225	(2,151,541)	0	165	105,381	561,637
AEP Texas North Company - Distribution	57,908	270,061	233,106	17,295	(19,522)	0	1	1,101	56,783
AEP Texas North Company - Generation	8,091	35,928	30,619	2,321	(2,564)	0	1	146	7,994
AEP Texas North Company - Transmission	11,272	29,904	21,449	2,171	(1,796)	0	0	122	11,769
Wheeling Power Co - Distribution	323,067	16,262,443	16,448,435	874,592	(1,377,527)	0	99	66,309	(113,464)
Wheeling Power Co - Transmission	0	1,393,693	1,431,598	73,493	(119,894)	0	9	5,683	(40,710)
Cedar Coal Co	8,382	4,614,829	4,740,109	243,792	(396,976)	0	43	18,817	(125,958)
Central Coal Company	0	0	0	0	0	0	0	0	0
Central Ohio Coal	0	11,145,217	11,448,332	587,713	(958,777)	0	64	45,444	(325,556)
Southern Ohio Coal - Martinka	0	7,262,835	7,460,361	382,986	(624,792)	0	38	29,614	(212,150)
Southern Ohio Coal - Meigs	13,275	12,837,105	13,148,277	677,630	(1,101,145)	0	81	52,342	(357,823)
Windsor	0	4,202,703	4,317,004	221,618	(361,541)	0	27	17,136	(122,763)
Price River Coal	0	509,629	523,490	26,874	(43,841)	0	5	2,078	(14,887)
Houston Pipeline (HPL)	0	4,729,264	4,349,990	249,385	(364,304)	0	22	19,283	(95,608)
Total	\$87,668,964	\$3,025,184,015	\$3,004,018,065	\$164,147,786	(\$251,581,143)	\$0	\$17,665	\$12,334,936	\$12,588,207



**AMERICAN ELECTRIC POWER
 EAST RETIREMENT PLAN
 ESTIMATED 2006 CONTRIBUTIONS**

ML-18

Location	EOY	EOY	Year-End Contribution to Eliminate AOCI	Funding Policy Contribution
	Accrued Benefit Obligation	Fair Value of Assets, Without Contributions Made in Calendar Year 2006		
AEP Energy Services, Inc.	\$1,345,668	\$1,346,300	\$0	\$0
AEP Pro Serv, Inc.	135,789	135,852	0	0
AEP T & D Services, LLC	0	0	0	0
American Electric Power Service Corporation	849,119,129	849,517,868	0	0
Appalachian Power Co - Distribution	309,432,273	309,577,580	0	0
Appalachian Power Co - Generation	220,813,149	220,916,841	0	0
Appalachian Power Co - Transmission	37,738,935	37,756,656	0	0
C3 Communications, Inc.	28,682	28,695	0	0
Cardinal Operating Company	58,093,590	58,120,870	0	0
AEP Texas Central Company - Distribution	1,350,521	1,351,156	0	0
AEP Texas Central Company - Generation	0	0	0	0
AEP Texas Central Company - Nuclear	0	0	0	0
AEP Texas Central Company - Transmission	269,456	269,583	0	0
Columbus Southern Power Co - Distribution	233,772,654	233,882,432	0	0
Columbus Southern Power Co - Generation	101,917,518	101,965,378	0	0
Columbus Southern Power Co - Transmission	23,895,948	23,907,168	0	0
Conesville Coal Preparation Company	2,601,705	2,602,927	0	0
Cook Coal Terminal	2,592,916	2,594,133	0	0
CSW Energy, Inc.	76,897	76,933	0	0
Elmwood	828,306	828,695	0	0
EnerShop Inc.	0	0	0	0
Indiana Michigan Power Co - Distribution	159,515,182	159,590,088	0	0
Indiana Michigan Power Co - Generation	87,435,372	87,476,430	0	0
Indiana Michigan Power Co - Nuclear	136,893,042	136,957,326	0	0
Indiana Michigan Power Co - Transmission	31,416,564	31,431,317	0	0
Kentucky Power Co - Distribution	54,748,269	54,773,978	0	0
Kentucky Power Co - Generation	27,171,106	27,183,865	0	0
Kentucky Power Co - Transmission	5,555,137	5,557,746	0	0
Kingsport Power Co - Distribution	11,765,561	11,771,086	0	0
Kingsport Power Co - Transmission	2,421,438	2,422,574	0	0
Memco	4,057,637	4,059,542	0	0
Ohio Power Co - Distribution	231,507,256	231,615,969	0	0
Ohio Power Co - Generation	200,091,963	200,185,924	0	0
Ohio Power Co - Transmission	46,774,053	46,796,017	0	0
Public Service Co of Oklahoma - Distribution	1,120,989	1,121,516	0	0
Public Service Co of Oklahoma - Generation	389,682	389,866	0	0
Public Service Co of Oklahoma - Transmission	387,235	387,417	0	0
Southwestern Electric Power Co - Distribution	322,833	322,985	0	0
Southwestern Electric Power Co - Generation	853,628	854,029	0	0
Southwestern Electric Power Co - Texas - Distribution	833,667	834,059	0	0
Southwestern Electric Power Co - Texas - Transmission	0	0	0	0
Southwestern Electric Power Co - Transmission	198,175	198,268	0	0
Water Transportation (Blackhawk)	25,102,553	25,114,342	0	0
AEP Texas North Company - Distribution	227,771	227,878	0	0
AEP Texas North Company - Generation	29,919	29,933	0	0
AEP Texas North Company - Transmission	20,958	20,967	0	0
Wheeling Power Co - Distribution	16,071,945	16,079,492	0	0
Wheeling Power Co - Transmission	1,398,830	1,399,486	0	0
Cedar Coal Co	4,631,612	4,633,787	0	0
Central Coal Company	0	0	0	0
Central Ohio Coal	11,186,290	11,191,543	0	0
Southern Ohio Coal - Martinka	7,289,600	7,293,023	0	0
Southern Ohio Coal - Meigs	12,847,324	12,853,358	0	0
Windsor	4,218,191	4,220,172	0	0
Price River Coal	511,507	511,748	0	0
Houston Pipeline (HPL)	4,250,423	4,252,418	0	0
Total	\$2,935,258,848	\$2,936,637,216	\$0	\$0

**AMERICAN ELECTRIC POWER
 EAST RETIREMENT PLAN
 ESTIMATED 2007 CONTRIBUTIONS**

ML-19

Location	EOY		Year-End Contribution to Eliminate AOCI	Funding Policy Contribution
	EOY Accrued Benefit Obligation	Fair Value of Assets, Without Contributions Made in Calendar Year 2007		
AEP Energy Services, Inc.	\$1,359,455	\$1,359,577	\$0	\$0
AEP Pro Serv, Inc.	137,180	137,192	0	0
AEP T & D Services, LLC	0	0	0	0
American Electric Power Service Corporation	857,818,454	857,895,560	0	0
Appalachian Power Co - Distribution	312,602,443	312,630,542	0	0
Appalachian Power Co - Generation	223,075,406	223,095,457	0	0
Appalachian Power Co - Transmission	38,125,575	38,129,001	0	0
C3 Communications, Inc.	28,976	28,978	0	0
Cardinal Operating Company	58,688,766	58,694,041	0	0
AEP Texas Central Company - Distribution	1,364,357	1,364,481	0	0
AEP Texas Central Company - Generation	0	0	0	0
AEP Texas Central Company - Nuclear	0	0	0	0
AEP Texas Central Company - Transmission	272,217	272,241	0	0
Columbus Southern Power Co - Distribution	236,167,682	236,188,910	0	0
Columbus Southern Power Co - Generation	102,961,675	102,970,930	0	0
Columbus Southern Power Co - Transmission	24,140,765	24,142,934	0	0
Conesville Coal Preparation Company	2,628,360	2,628,596	0	0
Cook Coal Terminal	2,619,481	2,619,715	0	0
CSW Energy, Inc.	77,685	77,692	0	0
Elmwood	836,792	836,867	0	0
EnerShop Inc.	0	0	0	0
Indiana Michigan Power Co - Distribution	161,149,434	161,163,918	0	0
Indiana Michigan Power Co - Generation	88,331,158	88,339,097	0	0
Indiana Michigan Power Co - Nuclear	138,295,527	138,307,958	0	0
Indiana Michigan Power Co - Transmission	31,738,430	31,741,283	0	0
Kentucky Power Co - Distribution	55,309,171	55,314,142	0	0
Kentucky Power Co - Generation	27,449,477	27,451,944	0	0
Kentucky Power Co - Transmission	5,612,050	5,612,555	0	0
Kingsport Power Co - Distribution	11,886,101	11,887,169	0	0
Kingsport Power Co - Transmission	2,446,246	2,446,465	0	0
Memco	4,099,208	4,099,576	0	0
Ohio Power Co - Distribution	233,879,075	233,900,097	0	0
Ohio Power Co - Generation	202,141,929	202,160,098	0	0
Ohio Power Co - Transmission	47,253,259	47,257,506	0	0
Public Service Co of Oklahoma - Distribution	1,132,474	1,132,576	0	0
Public Service Co of Oklahoma - Generation	393,674	393,710	0	0
Public Service Co of Oklahoma - Transmission	391,202	391,238	0	0
Southwestern Electric Power Co - Distribution	326,140	326,170	0	0
Southwestern Electric Power Co - Generation	862,374	862,451	0	0
Southwestern Electric Power Co - Texas - Distribution	842,208	842,284	0	0
Southwestern Electric Power Co - Texas - Transmission	0	0	0	0
Southwestern Electric Power Co - Transmission	200,205	200,224	0	0
Water Transportation (Blackhawk)	25,359,732	25,362,012	0	0
AEP Texas North Company - Distribution	230,105	230,125	0	0
AEP Texas North Company - Generation	30,226	30,228	0	0
AEP Texas North Company - Transmission	21,173	21,174	0	0
Wheeling Power Co - Distribution	16,236,604	16,238,064	0	0
Wheeling Power Co - Transmission	1,413,161	1,413,288	0	0
Cedar Coal Co	4,679,063	4,679,484	0	0
Central Coal Company	0	0	0	0
Central Ohio Coal	11,300,895	11,301,911	0	0
Southern Ohio Coal - Martinka	7,364,283	7,364,945	0	0
Southern Ohio Coal - Meigs	12,978,946	12,980,114	0	0
Windsor	4,261,407	4,261,790	0	0
Price River Coal	516,747	516,795	0	0
Houston Pipeline (HPL)	4,293,969	4,294,355	0	0
Total	\$2,965,330,922	\$2,965,597,460	\$0	\$0

**AMERICAN ELECTRIC POWER
 EAST RETIREMENT PLAN
 ESTIMATED 2008 CONTRIBUTIONS**

ML-20

Location	EOY	EOY	Year-End Contribution to Eliminate AOCI	Funding Policy Contribution
	Accrued Benefit Obligation	Fair Value of Assets, Without Contributions Made in Calendar Year 2008		
AEP Energy Services, Inc.	\$1,372,477	\$1,370,735	\$1,742	\$1,742
AEP Pro Serv, Inc.	138,494	138,318	176	176
AEP T & D Services, LLC	0	0	0	0
American Electric Power Service Corporation	866,035,451	864,936,760	1,098,691	1,098,691
Appalachian Power Co - Distribution	315,596,845	315,196,465	400,380	400,380
Appalachian Power Co - Generation	225,212,233	224,926,519	285,714	285,714
Appalachian Power Co - Transmission	38,490,778	38,441,946	48,832	48,832
C3 Communications, Inc.	29,254	29,216	38	38
Cardinal Operating Company	59,250,943	59,175,774	75,169	75,169
AEP Texas Central Company - Distribution	1,377,426	1,375,680	1,746	1,746
AEP Texas Central Company - Generation	0	0	0	0
AEP Texas Central Company - Nuclear	0	0	0	0
AEP Texas Central Company - Transmission	274,825	274,475	350	350
Columbus Southern Power Co - Distribution	238,429,919	238,127,437	302,482	302,482
Columbus Southern Power Co - Generation	103,947,939	103,816,067	131,872	131,872
Columbus Southern Power Co - Transmission	24,372,008	24,341,088	30,920	30,920
Conesville Coal Preparation Company	2,653,537	2,650,170	3,367	3,367
Cook Coal Terminal	2,644,573	2,641,217	3,356	3,356
CSW Energy, Inc.	78,429	78,330	99	99
Elmwood	844,808	843,736	1,072	1,072
EnerShop Inc.	0	0	0	0
Indiana Michigan Power Co - Distribution	162,693,076	162,486,675	206,401	206,401
Indiana Michigan Power Co - Generation	89,177,277	89,064,142	113,135	113,135
Indiana Michigan Power Co - Nuclear	139,620,252	139,443,124	177,128	177,128
Indiana Michigan Power Co - Transmission	32,042,451	32,001,801	40,650	40,650
Kentucky Power Co - Distribution	55,838,975	55,768,134	70,841	70,841
Kentucky Power Co - Generation	27,712,414	27,677,256	35,158	35,158
Kentucky Power Co - Transmission	5,665,808	5,658,620	7,188	7,188
Kingsport Power Co - Distribution	11,999,957	11,984,734	15,223	15,223
Kingsport Power Co - Transmission	2,469,678	2,466,544	3,134	3,134
Memco	4,138,474	4,133,224	5,250	5,250
Ohio Power Co - Distribution	236,119,390	235,819,838	299,552	299,552
Ohio Power Co - Generation	204,078,236	203,819,332	258,904	258,904
Ohio Power Co - Transmission	47,705,895	47,645,373	60,522	60,522
Public Service Co of Oklahoma - Distribution	1,143,322	1,141,872	1,450	1,450
Public Service Co of Oklahoma - Generation	397,445	396,942	503	503
Public Service Co of Oklahoma - Transmission	394,949	394,449	500	500
Southwestern Electric Power Co - Distribution	329,264	328,847	417	417
Southwestern Electric Power Co - Generation	870,635	869,529	1,106	1,106
Southwestern Electric Power Co - Texas - Distribution	850,275	849,198	1,077	1,077
Southwestern Electric Power Co - Texas - Transmission	0	0	0	0
Southwestern Electric Power Co - Transmission	202,123	201,867	256	256
Water Transportation (Blackhawk)	25,602,652	25,570,171	32,481	32,481
AEP Texas North Company - Distribution	232,309	232,014	295	295
AEP Texas North Company - Generation	30,516	30,476	40	40
AEP Texas North Company - Transmission	21,376	21,348	28	28
Wheeling Power Co - Distribution	16,392,134	16,371,338	20,796	20,796
Wheeling Power Co - Transmission	1,426,698	1,424,887	1,811	1,811
Cedar Coal Co	4,723,883	4,717,891	5,992	5,992
Central Coal Company	0	0	0	0
Central Ohio Coal	11,409,146	11,394,672	14,474	14,474
Southern Ohio Coal - Martinka	7,434,825	7,425,393	9,432	9,432
Southern Ohio Coal - Meigs	13,103,271	13,086,648	16,623	16,623
Windsor	4,302,227	4,296,769	5,458	5,458
Price River Coal	521,697	521,036	661	661
Houston Pipeline (HPL)	4,335,101	4,329,601	5,500	5,500
Total	\$2,993,735,670	\$2,989,937,678	\$3,797,992	\$3,797,992

**AMERICAN ELECTRIC POWER
EAST RETIREMENT PLAN
ESTIMATED 2009 CONTRIBUTIONS**

ML-21

Location	EOY	EOY	Year-End Contribution to Eliminate AOCI	Funding Policy Contribution
	Accrued Benefit Obligation	Fair Value of Assets, Without Contributions Made in Calendar Year 2009		
AEP Energy Services, Inc.	\$1,380,849	\$1,377,507	\$3,342	\$3,342
AEP Pro Serv, Inc.	139,339	139,001	338	338
AEP T & D Services, LLC	0	0	0	0
American Electric Power Service Corporation	871,318,014	869,209,450	2,108,564	2,108,564
Appalachian Power Co - Distribution	317,521,894	316,753,500	768,394	768,394
Appalachian Power Co - Generation	226,585,962	226,037,630	548,332	548,332
Appalachian Power Co - Transmission	38,725,561	38,631,845	93,716	93,716
C3 Communications, Inc.	29,432	29,360	72	72
Cardinal Operating Company	59,612,356	59,468,095	144,261	144,261
AEP Texas Central Company - Distribution	1,385,828	1,382,475	3,353	3,353
AEP Texas Central Company - Generation	0	0	0	0
AEP Texas Central Company - Nuclear	0	0	0	0
AEP Texas Central Company - Transmission	276,501	275,831	670	670
Columbus Southern Power Co - Distribution	239,884,272	239,303,760	580,512	580,512
Columbus Southern Power Co - Generation	104,581,991	104,328,906	253,085	253,085
Columbus Southern Power Co - Transmission	24,520,670	24,461,330	59,340	59,340
Conesville Coal Preparation Company	2,669,723	2,663,262	6,461	6,461
Cook Coal Terminal	2,660,704	2,654,264	6,440	6,440
CSW Energy, Inc.	78,907	78,717	190	190
Elmwood	849,961	847,904	2,057	2,057
EnerShop Inc.	0	0	0	0
Indiana Michigan Power Co - Distribution	163,685,456	163,289,341	396,115	396,115
Indiana Michigan Power Co - Generation	89,721,232	89,504,109	217,123	217,123
Indiana Michigan Power Co - Nuclear	140,471,895	140,131,957	339,938	339,938
Indiana Michigan Power Co - Transmission	32,237,901	32,159,886	78,015	78,015
Kentucky Power Co - Distribution	56,179,576	56,043,623	135,953	135,953
Kentucky Power Co - Generation	27,881,452	27,813,979	67,473	67,473
Kentucky Power Co - Transmission	5,700,368	5,686,573	13,795	13,795
Kingsport Power Co - Distribution	12,073,153	12,043,937	29,216	29,216
Kingsport Power Co - Transmission	2,484,742	2,478,729	6,013	6,013
Memco	4,163,717	4,153,641	10,076	10,076
Ohio Power Co - Distribution	237,559,649	236,984,761	574,888	574,888
Ohio Power Co - Generation	205,323,054	204,826,177	496,877	496,877
Ohio Power Co - Transmission	47,996,887	47,880,736	116,151	116,151
Public Service Co of Oklahoma - Distribution	1,150,296	1,147,513	2,783	2,783
Public Service Co of Oklahoma - Generation	399,869	398,903	966	966
Public Service Co of Oklahoma - Transmission	397,358	396,397	961	961
Southwestern Electric Power Co - Distribution	331,272	330,472	800	800
Southwestern Electric Power Co - Generation	875,946	873,825	2,121	2,121
Southwestern Electric Power Co - Texas - Distribution	855,461	853,392	2,069	2,069
Southwestern Electric Power Co - Texas - Transmission	0	0	0	0
Southwestern Electric Power Co - Transmission	203,356	202,864	492	492
Water Transportation (Blackhawk)	25,758,821	25,696,485	62,336	62,336
AEP Texas North Company - Distribution	233,726	233,160	566	566
AEP Texas North Company - Generation	30,702	30,626	76	76
AEP Texas North Company - Transmission	21,506	21,453	53	53
Wheeling Power Co - Distribution	16,492,121	16,452,211	39,910	39,910
Wheeling Power Co - Transmission	1,435,400	1,431,926	3,474	3,474
Cedar Coal Co	4,752,697	4,741,197	11,500	11,500
Central Coal Company	0	0	0	0
Central Ohio Coal	11,478,738	11,450,960	27,778	27,778
Southern Ohio Coal - Martinka	7,480,175	7,462,073	18,102	18,102
Southern Ohio Coal - Meigs	13,183,197	13,151,295	31,902	31,902
Windsor	4,328,469	4,317,995	10,474	10,474
Price River Coal	524,879	523,610	1,269	1,269
Houston Pipeline (HPL)	4,361,544	4,350,988	10,556	10,556
Total	\$3,011,996,579	\$3,004,707,631	\$7,288,948	\$7,288,948

**AMERICAN ELECTRIC POWER
 EAST RETIREMENT PLAN
 ESTIMATED 2010 CONTRIBUTIONS**

ML-22

Location	EOY	EOY	Year-End Contribution to Eliminate AOCI	Funding Policy Contribution
	Accrued Benefit Obligation	Fair Value of Assets, Without Contributions Made in Calendar Year 2010		
AEP Energy Services, Inc.	\$1,387,893	\$1,382,920	\$4,973	\$4,973
AEP Pro Serv, Inc.	140,050	139,547	503	503
AEP T & D Services, LLC	0	0	0	0
American Electric Power Service Corporation	875,762,885	872,625,288	3,137,597	3,137,597
Appalachian Power Co - Distribution	319,141,674	317,998,285	1,143,389	1,143,389
Appalachian Power Co - Generation	227,741,849	226,925,918	815,931	815,931
Appalachian Power Co - Transmission	38,923,112	38,783,661	139,451	139,451
C3 Communications, Inc.	29,582	29,476	106	106
Cardinal Operating Company	59,916,458	59,701,794	214,664	214,664
AEP Texas Central Company - Distribution	1,392,898	1,387,908	4,990	4,990
AEP Texas Central Company - Generation	0	0	0	0
AEP Texas Central Company - Nuclear	0	0	0	0
AEP Texas Central Company - Transmission	277,912	276,915	997	997
Columbus Southern Power Co - Distribution	241,107,998	240,244,181	863,817	863,817
Columbus Southern Power Co - Generation	105,115,497	104,738,900	376,597	376,597
Columbus Southern Power Co - Transmission	24,645,758	24,557,459	88,299	88,299
Conesville Coal Preparation Company	2,683,342	2,673,728	9,614	9,614
Cook Coal Terminal	2,674,277	2,664,695	9,582	9,582
CSW Energy, Inc.	79,310	79,026	284	284
Elmwood	854,297	851,236	3,061	3,061
EnerShop Inc.	0	0	0	0
Indiana Michigan Power Co - Distribution	164,520,468	163,931,039	589,429	589,429
Indiana Michigan Power Co - Generation	90,178,929	89,855,844	323,085	323,085
Indiana Michigan Power Co - Nuclear	141,188,487	140,682,651	505,836	505,836
Indiana Michigan Power Co - Transmission	32,402,357	32,286,268	116,089	116,089
Kentucky Power Co - Distribution	56,466,166	56,263,864	202,302	202,302
Kentucky Power Co - Generation	28,023,684	27,923,283	100,401	100,401
Kentucky Power Co - Transmission	5,729,447	5,708,920	20,527	20,527
Kingsport Power Co - Distribution	12,134,742	12,091,267	43,475	43,475
Kingsport Power Co - Transmission	2,497,417	2,488,470	8,947	8,947
Memco	4,184,957	4,169,964	14,993	14,993
Ohio Power Co - Distribution	238,771,517	237,916,069	855,448	855,448
Ohio Power Co - Generation	206,370,472	205,631,107	739,365	739,365
Ohio Power Co - Transmission	48,241,734	48,068,898	172,836	172,836
Public Service Co of Oklahoma - Distribution	1,156,164	1,152,022	4,142	4,142
Public Service Co of Oklahoma - Generation	401,909	400,470	1,439	1,439
Public Service Co of Oklahoma - Transmission	399,385	397,955	1,430	1,430
Southwestern Electric Power Co - Distribution	332,962	331,770	1,192	1,192
Southwestern Electric Power Co - Generation	880,414	877,259	3,155	3,155
Southwestern Electric Power Co - Texas - Distribution	859,825	856,746	3,079	3,079
Southwestern Electric Power Co - Texas - Transmission	0	0	0	0
Southwestern Electric Power Co - Transmission	204,393	203,661	732	732
Water Transportation (Blackhawk)	25,890,225	25,797,467	92,758	92,758
AEP Texas North Company - Distribution	234,918	234,076	842	842
AEP Texas North Company - Generation	30,859	30,747	112	112
AEP Texas North Company - Transmission	21,616	21,538	78	78
Wheeling Power Co - Distribution	16,576,253	16,516,865	59,388	59,388
Wheeling Power Co - Transmission	1,442,722	1,437,553	5,169	5,169
Cedar Coal Co	4,776,942	4,759,829	17,113	17,113
Central Coal Company	0	0	0	0
Central Ohio Coal	11,537,295	11,495,960	41,335	41,335
Southern Ohio Coal - Martinka	7,518,334	7,491,398	26,936	26,936
Southern Ohio Coal - Meigs	13,250,449	13,202,977	47,472	47,472
Windsor	4,350,550	4,334,964	15,586	15,586
Price River Coal	527,557	525,668	1,889	1,889
Houston Pipeline (HPL)	4,383,794	4,368,087	15,707	15,707
Total	\$3,027,361,735	\$3,016,515,593	\$10,846,142	\$10,846,142

**AMERICAN ELECTRIC POWER
 EAST RETIREMENT PLAN
 ESTIMATED 2011 CONTRIBUTIONS**

ML-23

Location	EOY	EOY	Year-End Contribution to Eliminate AOCI	Funding Policy Contribution
	Accrued Benefit Obligation	Fair Value of Assets, Without Contributions Made in Calendar Year 2011		
AEP Energy Services, Inc.	\$1,383,264	\$1,387,084	\$0	\$0
AEP Pro Serv, Inc.	139,583	139,968	0	0
AEP T & D Services, LLC	0	0	0	0
American Electric Power Service Corporation	872,842,223	875,252,576	0	0
Appalachian Power Co - Distribution	318,077,339	318,955,709	0	0
Appalachian Power Co - Generation	226,982,332	227,609,143	0	0
Appalachian Power Co - Transmission	38,793,304	38,900,430	0	0
C3 Communications, Inc.	29,483	29,564	0	0
Cardinal Operating Company	59,716,637	59,881,544	0	0
AEP Texas Central Company - Distribution	1,388,253	1,392,087	0	0
AEP Texas Central Company - Generation	0	0	0	0
AEP Texas Central Company - Nuclear	0	0	0	0
AEP Texas Central Company - Transmission	276,985	277,749	0	0
Columbus Southern Power Co - Distribution	240,303,905	240,967,505	0	0
Columbus Southern Power Co - Generation	104,764,938	105,054,247	0	0
Columbus Southern Power Co - Transmission	24,563,565	24,631,396	0	0
Conesville Coal Preparation Company	2,674,393	2,681,778	0	0
Cook Coal Terminal	2,665,358	2,672,718	0	0
CSW Energy, Inc.	79,046	79,264	0	0
Elmwood	851,448	853,799	0	0
EnerShop Inc.	0	0	0	0
Indiana Michigan Power Co - Distribution	163,971,794	164,424,600	0	0
Indiana Michigan Power Co - Generation	89,878,183	90,126,381	0	0
Indiana Michigan Power Co - Nuclear	140,717,625	141,106,216	0	0
Indiana Michigan Power Co - Transmission	32,294,295	32,383,475	0	0
Kentucky Power Co - Distribution	56,277,852	56,433,263	0	0
Kentucky Power Co - Generation	27,930,225	28,007,354	0	0
Kentucky Power Co - Transmission	5,710,339	5,726,109	0	0
Kingsport Power Co - Distribution	12,094,273	12,127,672	0	0
Kingsport Power Co - Transmission	2,489,088	2,495,962	0	0
Memco	4,171,000	4,182,519	0	0
Ohio Power Co - Distribution	237,975,216	238,632,383	0	0
Ohio Power Co - Generation	205,682,228	206,250,218	0	0
Ohio Power Co - Transmission	48,080,848	48,213,624	0	0
Public Service Co of Oklahoma - Distribution	1,152,308	1,155,491	0	0
Public Service Co of Oklahoma - Generation	400,569	401,676	0	0
Public Service Co of Oklahoma - Transmission	398,053	399,153	0	0
Southwestern Electric Power Co - Distribution	331,852	332,769	0	0
Southwestern Electric Power Co - Generation	877,478	879,900	0	0
Southwestern Electric Power Co - Texas - Distribution	856,957	859,326	0	0
Southwestern Electric Power Co - Texas - Transmission	0	0	0	0
Southwestern Electric Power Co - Transmission	203,711	204,275	0	0
Water Transportation (Blackhawk)	25,803,881	25,875,138	0	0
AEP Texas North Company - Distribution	234,135	234,781	0	0
AEP Texas North Company - Generation	30,756	30,839	0	0
AEP Texas North Company - Transmission	21,544	21,603	0	0
Wheeling Power Co - Distribution	16,520,971	16,566,594	0	0
Wheeling Power Co - Transmission	1,437,911	1,441,882	0	0
Cedar Coal Co	4,761,011	4,774,160	0	0
Central Coal Company	0	0	0	0
Central Ohio Coal	11,498,818	11,530,572	0	0
Southern Ohio Coal - Martinka	7,493,260	7,513,953	0	0
Southern Ohio Coal - Meigs	13,206,259	13,242,728	0	0
Windsor	4,336,041	4,348,015	0	0
Price River Coal	525,798	527,251	0	0
Houston Pipeline (HPL)	4,369,174	4,381,238	0	0
Total	\$3,017,265,509	\$3,025,597,681	\$0	\$0

**AMERICAN ELECTRIC POWER
 EAST RETIREMENT PLAN
 ESTIMATED 2012 CONTRIBUTIONS**

ML-24

Location	EOY	EOY	Year-End Contribution to Eliminate AOCI	Funding Policy Contribution
	Accrued Benefit Obligation	Fair Value of Assets, Without Contributions Made in Calendar Year 2012		
AEP Energy Services, Inc.	\$1,378,852	\$1,382,290	\$0	\$0
AEP Pro Serv, Inc.	139,138	139,484	0	0
AEP T & D Services, LLC	0	0	0	0
American Electric Power Service Corporation	870,057,951	872,228,006	0	0
Appalachian Power Co - Distribution	317,062,707	317,853,509	0	0
Appalachian Power Co - Generation	226,258,283	226,822,605	0	0
Appalachian Power Co - Transmission	38,669,558	38,766,004	0	0
C3 Communications, Inc.	29,389	29,462	0	0
Cardinal Operating Company	59,526,147	59,674,614	0	0
AEP Texas Central Company - Distribution	1,383,825	1,387,276	0	0
AEP Texas Central Company - Generation	0	0	0	0
AEP Texas Central Company - Nuclear	0	0	0	0
AEP Texas Central Company - Transmission	276,101	276,789	0	0
Columbus Southern Power Co - Distribution	239,537,362	240,134,804	0	0
Columbus Southern Power Co - Generation	104,430,749	104,691,216	0	0
Columbus Southern Power Co - Transmission	24,485,210	24,546,278	0	0
Conesville Coal Preparation Company	2,665,862	2,672,511	0	0
Cook Coal Terminal	2,656,856	2,663,482	0	0
CSW Energy, Inc.	78,794	78,990	0	0
Elmwood	848,732	850,849	0	0
EnerShop Inc.	0	0	0	0
Indiana Michigan Power Co - Distribution	163,448,742	163,856,405	0	0
Indiana Michigan Power Co - Generation	89,591,481	89,814,935	0	0
Indiana Michigan Power Co - Nuclear	140,268,751	140,618,602	0	0
Indiana Michigan Power Co - Transmission	32,191,280	32,271,569	0	0
Kentucky Power Co - Distribution	56,098,332	56,238,249	0	0
Kentucky Power Co - Generation	27,841,131	27,910,570	0	0
Kentucky Power Co - Transmission	5,692,124	5,706,321	0	0
Kingsport Power Co - Distribution	12,055,694	12,085,763	0	0
Kingsport Power Co - Transmission	2,481,148	2,487,337	0	0
Memco	4,157,695	4,168,066	0	0
Ohio Power Co - Distribution	237,216,101	237,807,752	0	0
Ohio Power Co - Generation	205,026,124	205,537,489	0	0
Ohio Power Co - Transmission	47,927,475	48,047,014	0	0
Public Service Co of Oklahoma - Distribution	1,148,632	1,151,498	0	0
Public Service Co of Oklahoma - Generation	399,291	400,288	0	0
Public Service Co of Oklahoma - Transmission	396,783	397,774	0	0
Southwestern Electric Power Co - Distribution	330,793	331,619	0	0
Southwestern Electric Power Co - Generation	874,679	876,859	0	0
Southwestern Electric Power Co - Texas - Distribution	854,223	856,356	0	0
Southwestern Electric Power Co - Texas - Transmission	0	0	0	0
Southwestern Electric Power Co - Transmission	203,061	203,569	0	0
Water Transportation (Blackhawk)	25,721,569	25,785,723	0	0
AEP Texas North Company - Distribution	233,388	233,970	0	0
AEP Texas North Company - Generation	30,658	30,733	0	0
AEP Texas North Company - Transmission	21,475	21,528	0	0
Wheeling Power Co - Distribution	16,468,271	16,509,345	0	0
Wheeling Power Co - Transmission	1,433,324	1,436,899	0	0
Cedar Coal Co	4,745,824	4,757,662	0	0
Central Coal Company	0	0	0	0
Central Ohio Coal	11,462,138	11,490,727	0	0
Southern Ohio Coal - Martinka	7,469,357	7,487,987	0	0
Southern Ohio Coal - Meigs	13,164,132	13,196,966	0	0
Windsor	4,322,210	4,332,990	0	0
Price River Coal	524,121	525,429	0	0
Houston Pipeline (HPL)	4,355,237	4,366,098	0	0
Total	\$3,007,640,760	\$3,015,142,261	\$0	\$0

**AMERICAN ELECTRIC POWER
EAST RETIREMENT PLAN
ESTIMATED 2013 CONTRIBUTIONS**

ML-25

Location	EOY	EOY	Year-End Contribution to Eliminate AOCI	Funding Policy Contribution
	Accrued Benefit Obligation	Fair Value of Assets, Without Contributions Made in Calendar Year 2013		
AEP Energy Services, Inc.	\$1,377,619	\$1,378,784	\$0	\$0
AEP Pro Serv, Inc.	139,014	139,130	0	0
AEP T & D Services, LLC	0	0	0	0
American Electric Power Service Corporation	869,279,777	870,015,454	0	0
Appalachian Power Co - Distribution	316,779,128	317,047,220	0	0
Appalachian Power Co - Generation	226,055,919	226,247,231	0	0
Appalachian Power Co - Transmission	38,634,972	38,667,667	0	0
C3 Communications, Inc.	29,363	29,387	0	0
Cardinal Operating Company	59,472,907	59,523,239	0	0
AEP Texas Central Company - Distribution	1,382,587	1,383,757	0	0
AEP Texas Central Company - Generation	0	0	0	0
AEP Texas Central Company - Nuclear	0	0	0	0
AEP Texas Central Company - Transmission	275,854	276,087	0	0
Columbus Southern Power Co - Distribution	239,323,121	239,525,662	0	0
Columbus Southern Power Co - Generation	104,337,347	104,425,649	0	0
Columbus Southern Power Co - Transmission	24,463,311	24,484,012	0	0
Conesville Coal Preparation Company	2,663,478	2,665,732	0	0
Cook Coal Terminal	2,654,480	2,656,725	0	0
CSW Energy, Inc.	78,724	78,790	0	0
Elmwood	847,973	848,690	0	0
EnerShop Inc.	0	0	0	0
Indiana Michigan Power Co - Distribution	163,302,555	163,440,756	0	0
Indiana Michigan Power Co - Generation	89,511,351	89,587,105	0	0
Indiana Michigan Power Co - Nuclear	140,143,296	140,261,899	0	0
Indiana Michigan Power Co - Transmission	32,162,488	32,189,707	0	0
Kentucky Power Co - Distribution	56,048,158	56,095,591	0	0
Kentucky Power Co - Generation	27,816,230	27,839,770	0	0
Kentucky Power Co - Transmission	5,687,033	5,691,846	0	0
Kingsport Power Co - Distribution	12,044,911	12,055,105	0	0
Kingsport Power Co - Transmission	2,478,929	2,481,027	0	0
Memco	4,153,976	4,157,493	0	0
Ohio Power Co - Distribution	237,003,937	237,204,513	0	0
Ohio Power Co - Generation	204,842,750	205,016,109	0	0
Ohio Power Co - Transmission	47,884,609	47,925,135	0	0
Public Service Co of Oklahoma - Distribution	1,147,605	1,148,577	0	0
Public Service Co of Oklahoma - Generation	398,934	399,272	0	0
Public Service Co of Oklahoma - Transmission	396,428	396,765	0	0
Southwestern Electric Power Co - Distribution	330,497	330,778	0	0
Southwestern Electric Power Co - Generation	873,897	874,635	0	0
Southwestern Electric Power Co - Texas - Distribution	853,459	854,184	0	0
Southwestern Electric Power Co - Texas - Transmission	0	0	0	0
Southwestern Electric Power Co - Transmission	202,879	203,052	0	0
Water Transportation (Blackhawk)	25,698,564	25,720,313	0	0
AEP Texas North Company - Distribution	233,179	233,376	0	0
AEP Texas North Company - Generation	30,631	30,655	0	0
AEP Texas North Company - Transmission	21,456	21,473	0	0
Wheeling Power Co - Distribution	16,453,542	16,467,466	0	0
Wheeling Power Co - Transmission	1,432,042	1,433,254	0	0
Cedar Coal Co	4,741,579	4,745,594	0	0
Central Coal Company	0	0	0	0
Central Ohio Coal	11,451,886	11,461,578	0	0
Southern Ohio Coal - Martinka	7,462,676	7,468,993	0	0
Southern Ohio Coal - Meigs	13,152,358	13,163,490	0	0
Windsor	4,318,344	4,321,999	0	0
Price River Coal	523,652	524,096	0	0
Houston Pipeline (HPL)	4,351,342	4,355,023	0	0
Total	\$3,004,950,747	\$3,007,493,845	\$0	\$0

**AMERICAN ELECTRIC POWER
 EAST RETIREMENT PLAN
 ESTIMATED 2014 CONTRIBUTIONS**

ML-26

Location	EOY	EOY	Year-End Contribution to Eliminate AOCI	Funding Policy Contribution
	Accrued Benefit Obligation	Fair Value of Assets, Without Contributions Made in Calendar Year 2014		
AEP Energy Services, Inc.	\$1,377,191	\$1,374,015	\$3,176	\$3,176
AEP Pro Serv, Inc.	138,971	138,649	322	322
AEP T & D Services, LLC	0	0	0	0
American Electric Power Service Corporation	869,009,968	867,006,227	2,003,741	2,003,741
Appalachian Power Co - Distribution	316,680,806	315,950,611	730,195	730,195
Appalachian Power Co - Generation	225,985,755	225,464,683	521,072	521,072
Appalachian Power Co - Transmission	38,622,980	38,533,923	89,057	89,057
C3 Communications, Inc.	29,354	29,286	68	68
Cardinal Operating Company	59,454,448	59,317,359	137,089	137,089
AEP Texas Central Company - Distribution	1,382,158	1,378,971	3,187	3,187
AEP Texas Central Company - Generation	0	0	0	0
AEP Texas Central Company - Nuclear	0	0	0	0
AEP Texas Central Company - Transmission	275,768	275,132	636	636
Columbus Southern Power Co - Distribution	239,248,839	238,697,186	551,653	551,653
Columbus Southern Power Co - Generation	104,304,963	104,064,459	240,504	240,504
Columbus Southern Power Co - Transmission	24,455,718	24,399,327	56,391	56,391
Conesville Coal Preparation Company	2,662,651	2,656,511	6,140	6,140
Cook Coal Terminal	2,653,656	2,647,536	6,120	6,120
CSW Energy, Inc.	78,700	78,517	183	183
Elmwood	847,710	845,755	1,955	1,955
EnerShop Inc.	0	0	0	0
Indiana Michigan Power Co - Distribution	163,251,869	162,875,444	376,425	376,425
Indiana Michigan Power Co - Generation	89,483,568	89,277,239	206,329	206,329
Indiana Michigan Power Co - Nuclear	140,099,798	139,776,759	323,039	323,039
Indiana Michigan Power Co - Transmission	32,152,505	32,078,369	74,136	74,136
Kentucky Power Co - Distribution	56,030,762	55,901,566	129,196	129,196
Kentucky Power Co - Generation	27,807,596	27,743,477	64,119	64,119
Kentucky Power Co - Transmission	5,685,268	5,672,159	13,109	13,109
Kingsport Power Co - Distribution	12,041,172	12,013,409	27,763	27,763
Kingsport Power Co - Transmission	2,478,160	2,472,446	5,714	5,714
Memco	4,152,687	4,143,113	9,574	9,574
Ohio Power Co - Distribution	236,930,375	236,384,065	546,310	546,310
Ohio Power Co - Generation	204,779,171	204,306,995	472,176	472,176
Ohio Power Co - Transmission	47,869,746	47,759,370	110,376	110,376
Public Service Co of Oklahoma - Distribution	1,147,249	1,144,604	2,645	2,645
Public Service Co of Oklahoma - Generation	398,810	397,891	919	919
Public Service Co of Oklahoma - Transmission	396,305	395,393	912	912
Southwestern Electric Power Co - Distribution	330,394	329,634	760	760
Southwestern Electric Power Co - Generation	873,626	871,610	2,016	2,016
Southwestern Electric Power Co - Texas - Distribution	853,194	851,229	1,965	1,965
Southwestern Electric Power Co - Texas - Transmission	0	0	0	0
Southwestern Electric Power Co - Transmission	202,816	202,350	466	466
Water Transportation (Blackhawk)	25,690,588	25,631,351	59,237	59,237
AEP Texas North Company - Distribution	233,107	232,569	538	538
AEP Texas North Company - Generation	30,621	30,549	72	72
AEP Texas North Company - Transmission	21,449	21,399	50	50
Wheeling Power Co - Distribution	16,448,435	16,410,508	37,927	37,927
Wheeling Power Co - Transmission	1,431,598	1,428,297	3,301	3,301
Cedar Coal Co	4,740,107	4,729,180	10,927	10,927
Central Coal Company	0	0	0	0
Central Ohio Coal	11,448,332	11,421,935	26,397	26,397
Southern Ohio Coal - Martinka	7,460,360	7,443,159	17,201	17,201
Southern Ohio Coal - Meigs	13,148,276	13,117,960	30,316	30,316
Windsor	4,317,004	4,307,050	9,954	9,954
Price River Coal	523,489	522,283	1,206	1,206
Houston Pipeline (HPL)	4,349,991	4,339,960	10,031	10,031
Total	\$3,004,018,064	\$2,997,091,469	\$6,926,595	\$6,926,595

**AMERICAN ELECTRIC POWER
 EAST RETIREMENT PLAN
 ESTIMATED 2015 CONTRIBUTIONS**

ML-27

Location	EOY	EOY	Year-End Contribution to Eliminate AOCI	Funding Policy Contribution
	Accrued Benefit Obligation	Fair Value of Assets, Without Contributions Made in Calendar Year 2015		
AEP Energy Services, Inc.	\$1,377,778	\$1,371,420	\$6,358	\$6,358
AEP Pro Serv, Inc.	139,030	138,387	643	643
AEP T & D Services, LLC	0	0	0	0
American Electric Power Service Corporation	869,380,421	865,368,825	4,011,596	4,011,596
Appalachian Power Co - Distribution	316,815,805	315,353,916	1,461,889	1,461,889
Appalachian Power Co - Generation	226,082,091	225,038,877	1,043,214	1,043,214
Appalachian Power Co - Transmission	38,639,445	38,461,149	178,296	178,296
C3 Communications, Inc.	29,367	29,230	137	137
Cardinal Operating Company	59,479,793	59,205,334	274,459	274,459
AEP Texas Central Company - Distribution	1,382,747	1,376,367	6,380	6,380
AEP Texas Central Company - Generation	0	0	0	0
AEP Texas Central Company - Nuclear	0	0	0	0
AEP Texas Central Company - Transmission	275,886	274,613	1,273	1,273
Columbus Southern Power Co - Distribution	239,350,829	238,246,390	1,104,439	1,104,439
Columbus Southern Power Co - Generation	104,349,427	103,867,926	481,501	481,501
Columbus Southern Power Co - Transmission	24,466,143	24,353,247	112,896	112,896
Conesville Coal Preparation Company	2,663,786	2,651,494	12,292	12,292
Cook Coal Terminal	2,654,787	2,642,536	12,251	12,251
CSW Energy, Inc.	78,734	78,369	365	365
Elmwood	848,071	844,157	3,914	3,914
EnerShop Inc.	0	0	0	0
Indiana Michigan Power Co - Distribution	163,321,462	162,567,842	753,620	753,620
Indiana Michigan Power Co - Generation	89,521,714	89,108,633	413,081	413,081
Indiana Michigan Power Co - Nuclear	140,159,522	139,512,781	646,741	646,741
Indiana Michigan Power Co - Transmission	32,166,211	32,017,786	148,425	148,425
Kentucky Power Co - Distribution	56,054,648	55,795,992	258,656	258,656
Kentucky Power Co - Generation	27,819,450	27,691,082	128,368	128,368
Kentucky Power Co - Transmission	5,687,692	5,661,447	26,245	26,245
Kingsport Power Co - Distribution	12,046,305	11,990,720	55,585	55,585
Kingsport Power Co - Transmission	2,479,216	2,467,777	11,439	11,439
Memco	4,154,457	4,135,288	19,169	19,169
Ohio Power Co - Distribution	237,031,377	235,937,638	1,093,739	1,093,739
Ohio Power Co - Generation	204,866,467	203,921,147	945,320	945,320
Ohio Power Co - Transmission	47,890,153	47,669,173	220,980	220,980
Public Service Co of Oklahoma - Distribution	1,147,738	1,142,442	5,296	5,296
Public Service Co of Oklahoma - Generation	398,980	397,140	1,840	1,840
Public Service Co of Oklahoma - Transmission	396,474	394,646	1,828	1,828
Southwestern Electric Power Co - Distribution	330,535	329,011	1,524	1,524
Southwestern Electric Power Co - Generation	873,998	869,964	4,034	4,034
Southwestern Electric Power Co - Texas - Distribution	853,558	849,622	3,936	3,936
Southwestern Electric Power Co - Texas - Transmission	0	0	0	0
Southwestern Electric Power Co - Transmission	202,902	201,968	934	934
Water Transportation (Blackhawk)	25,701,540	25,582,944	118,596	118,596
AEP Texas North Company - Distribution	233,206	232,130	1,076	1,076
AEP Texas North Company - Generation	30,634	30,491	143	143
AEP Texas North Company - Transmission	21,458	21,359	99	99
Wheeling Power Co - Distribution	16,455,447	16,379,516	75,931	75,931
Wheeling Power Co - Transmission	1,432,208	1,425,599	6,609	6,609
Cedar Coal Co	4,742,128	4,720,248	21,880	21,880
Central Coal Company	0	0	0	0
Central Ohio Coal	11,453,212	11,400,364	52,848	52,848
Southern Ohio Coal - Martinka	7,463,540	7,429,102	34,438	34,438
Southern Ohio Coal - Meigs	13,153,881	13,093,185	60,696	60,696
Windsor	4,318,844	4,298,915	19,929	19,929
Price River Coal	523,712	521,297	2,415	2,415
Houston Pipeline (HPL)	4,351,845	4,331,763	20,082	20,082
Total	\$3,005,298,654	\$2,991,431,249	\$13,867,405	\$13,867,405