

COMMONWEALTH OF KENTUCKY  
BEFORE THE PUBLIC SERVICE COMMISSION



Three Vegetation  
Management  
workers performing  
Task 2 work on  
Olive Hill – Globe  
Circuit in Carter  
County

2015 DISTRIBUTION VEGETATION MANAGEMENT  
REPORT OF KENTUCKY POWER COMPANY  
IN CONFORMITY WITH PARAGRAPH 8(d)  
OF THE SETTLEMENT AGREEMENT,  
APPENDIX A TO THE COMMISSION'S JUNE 22, 2015  
ORDER IN CASE NO. 2014-00396

March 31, 2016

In accordance with the Public Service Commission's Order dated June 22, 2015, in Case No. 2014-00396, Kentucky Power provides the following report regarding its Distribution Vegetation Management ("VM") Program for the 2015 calendar year:

## **Introduction**

The Commission's June 22, 2015 Order in Case No. 2014-00396 approved, with certain modifications unrelated to this report, the Settlement Agreement among Kentucky Power Company, Kentucky Industrial Utility Customers, Inc., and the Kentucky School Boards Association in that case ("Settlement Agreement"). Paragraph 8 of the Settlement Agreement modified the Company's existing VM Program. Generally, paragraph 8 of the Settlement Agreement provided for the following modifications to the then existing VM Program:

➤ Extended the period to perform the initial re-clearing of the Company's distribution right-of-way through 2018 ("Task 1"). Because the extension of the period for completing Task 1 was finalized subsequent to the Company's October 1, 2014 filing of its 2015 VM Program, the Task 1 mileage targets for 2015 approved as part of the Settlement Agreement are slightly different from those included in the October 1, 2014 VM Program Plan for 2015. In this report the 2015 Task 1 mileage targets are those provided for in the Settlement Agreement;<sup>1</sup>

➤ Implemented an interim program for the re-clearing of those portions of the Company's distribution right-of-way that were initially re-cleared beginning July 2010. ("Task 2"). The Settlement Agreement provides Task 2 is to be completed June 30, 2019;

➤ Provided for the initiation of a five-year cycle for VM Program maintenance re-clearing ("Task 3") beginning July 1, 2019;

➤ Maintained the Task 1 VM Program operation and maintenance and capital spending requirements approved by the Commission in Case No. 2009-00459;

➤ Provided an additional \$10,655,900 in revenue to fund the Task 2-related operation and maintenance activities required under the Settlement Agreement.

---

<sup>1</sup> The Company exceeded the 2015 Task 1 mileage targets contained in the October 1, 2014 filing and the Settlement Agreement.

- Provided modified total spending requirements for the years 2015-2023. These requirements will decrease beginning in 2019 with the completion of Task 1 and Task 2 and the initiation of Task 3;
- Provided an \$11,780,408 reduction of annual base rates beginning July 1, 2019 for those customer classes funding the VM Program;
- Established a one-way balancing account for annual deviations of total VM Program expenditures from the \$27,661,060 included in annual base rates beginning July 1, 2015.

### **2015 Work Performed And Expenditures**

During calendar 2015, Kentucky Power exceeded both its VM expenditure and VM mileage cleared targets.

#### **A. 2015 Distribution VM Expenditures**

The total O&M spending target for calendar year 2015 was \$22,327,777. Total O&M expenditures for the VM program were \$23,067,891 or \$740,114 (3.3%) more than the target amount.

2015 Task 1 expenditures were budgeted at \$8,618,983 for the first six months and 17,237,965 for the calendar year. Actual 2015 Task 1 O&M expenditures were \$9,447,174 (\$828,191 above target) during the first six months and \$18,932,943 (\$1,694,978 above target) for the calendar year.

Task 2 was initiated July 1, 2015. 2015 Task 2 O&M expenditures were budgeted at \$5,089,812. Actual 2015 Task 2 O&M expenditures were \$4,134,948 (\$954,864 less than budget).

Kentucky Power's 2015 Task 2 expenditures were less than budgeted because it was able to make greater use of the less expensive "local" crews to perform Task 2 work than originally projected. These crews, which originally were scheduled to perform Task 1 work during the second half of 2015, became available to perform Task 2 work because of the greater than projected amount of Task 1 work completed during the first half of the year. This in turn was due to the higher level of Task 1 expenditures during the first half of the year. In addition, the

Task 1 work is moving to some of the less heavily overgrown, and less expensive to clear, circuits.

Notwithstanding the lower than budgeted level of Task 2 expenditures, Kentucky Power exceeded its 2015 Task 2 mileage target.

The 2015 forestry capital spending target was \$2,371,472; forestry capital expenditures for calendar year 2015 were \$5,699,748 (\$3,328,276 above target). These additional capital funds were utilized to remove trees larger than 18 inches in diameter, widening rights-of-way, and for tree growth regulator applications (soil injections).

The 2015 total capital and O&M expenditures for the VM Program were \$28,767,639. This exceeded the 2015 expenditure target for O&M and forestry capital by \$4,068,390.

Please see Table 1 for further information on VM expenditures.

<b>Table 1: Kentucky Power Budgeted Expenses for 2015 Revised VM Program</b>						
Targeted Task VM Program	Jan - Jun		July - Dec		Year 2015	
	Budget	Actual	Budget	Actual	Budget	Actual
Task 1	\$ 8,618,982	\$ 9,447,174	\$ 8,618,983	\$ 9,485,769	\$ 17,237,965	\$ 18,932,943
Task 2	-	-	\$ 5,089,812	\$ 4,134,948	\$ 5,089,812	\$ 4,134,948
Task 3	-	-	-	-	-	-
<b>VM Program Dollars</b>	<b>\$8,618,982</b>	<b>\$9,447,174</b>	<b>\$13,708,795</b>	<b>\$13,620,717</b>	<b>\$22,327,777</b>	<b>\$23,067,891</b>

## **B. 2015 VM Mileage Cleared**

During calendar year 2015 the Company was projected to perform 987 miles of Task 1 work. The 2015 target for Task 2 work, which commenced July 1, 2015, was 371 miles. During 2015 Kentucky Power performed 1436 miles of Task 1 work (449 miles or 45% above target) and 434 miles of Task 2 work (63 miles or 17% above target). The VM plan also included 2,011 acres to be sprayed in 2015, and 1,967 acres (97.8%) were sprayed.

Since the beginning of the VM program in 2010, Kentucky Power has completed approximately 70% of the Task 1 work.

Further information concerning 2015 VM mileage cleared is presented in Table 2:

<b>Table 2: Targeted/Completed Mileage for Vegetation Management Program</b>		
<b>Distribution Vegetation Work Plan</b>	<b>Year - 2015</b>	
	<b>Targeted Mileage</b>	<b>Completed Mileage</b>
<b>Task 1</b>	<b>987</b>	<b>1436</b>
<b>Task 2</b>	<b>371</b>	<b>434</b>
<b>Task 3</b>	<b>-</b>	<b>-</b>
<b>Veg Program Miles</b>	<b>1358</b>	<b>1870</b>

Since it began July 2010, Kentucky Power’s VM program has trimmed 395,888 trees, cleared 9,366 acres of brush, sprayed 12,607 acres to control vegetation, and removed 1,338,402 trees.

**C. 2015 Distribution VM Work by Circuit**

Attachment 1 details the Task 1 VM work and expenditures by circuit. Attachment 2 similarly reports the 2015 (July 1 to December 31) Task 2 VM work and expenditures by circuit. Both attachments provide the number of miles of circuit completed, acres of brush cut, acres of brush sprayed, tree growth regulator (soil injection), trees removed, and trees trimmed.

O&M and capital expenditures are not accounted for on a circuit-by-circuit basis. The costs in Attachment 1 and 2 represent the total O&M and Capital expenditures for each circuit. Also unallocated on a circuit-by-circuit basis are: Internal Labor & Fleet, unscheduled hotspot maintenance, trouble restoration work, tree ticket investigation, contract foresters, tree contractor’s field supervision, incentive program for tree contractor’s employees, and contract clerical work expenses.

**D. Measures Of Improvement In System Reliability (SAIFI, CAIDI, SAIDI, and CMI)**

Table 3 provides total system reliability indices for Kentucky Power’s overall system for 2010 (when the VM Program began) through December 31, 2015. Table 4 provides reliability indices limited to Tree Inside of Right-of-Way outages for the same period.

The indices included in both Table 3 and Table 4 are System Average Interruption Frequency Index (“SAIFI”), the Customer Average Interruption Duration Index (“CAIDI”), and the System Average Interruption Duration Index (“SAIDI”) for each reporting period. Excluded from the calculation of the indices are major events as defined by IEEE standard 1366.

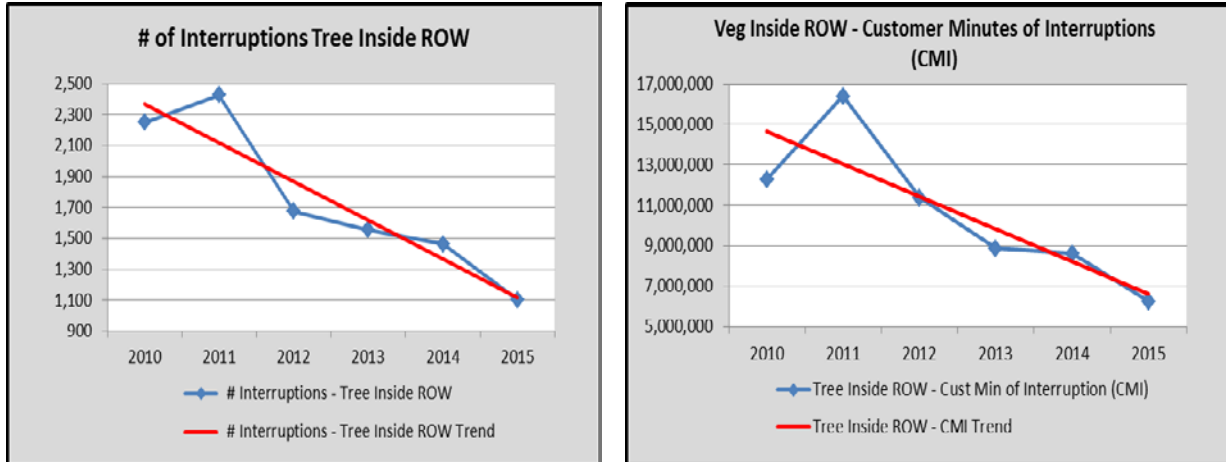
<b>Table 3: Six Year Reporting Indices for all Outage Cause Codes</b>			
<b>Year</b>	<b>SAIFI</b>	<b>CAIDI</b>	<b>SAIDI</b>
<b>2010</b>	2.4701	169.39	418.4
<b>2011</b>	3.0854	195.38	602.84
<b>2012</b>	2.4174	189.46	457.99
<b>2013</b>	2.1442	178.49	382.71
<b>2014</b>	2.3736	212.88	505.29
<b>2015</b>	2.4639	189.85	467.77

<b>Table 4: Six Year Reporting Indices for Tree Inside Right-of-Way Outage Cause Codes</b>			
<b>YEAR</b>	<b>Tree Inside Right-of-Way SAIFI</b>	<b>Tree Inside Right-of-Way CAIDI</b>	<b>Tree Inside Right-of-Way SAIDI</b>
<b>2010</b>	0.3707	190.7	70.68
<b>2011</b>	0.4192	227.4	95.32
<b>2012</b>	0.2562	258.8	66.31
<b>2013</b>	0.2815	184.3	51.88
<b>2014</b>	0.2154	236.3	50.89
<b>2015</b>	0.1782	207.6	37.00

Table 4 in particular is useful in assessing the efficacy of the Company’s VM Program because the VM Program focuses on inside right-of-way vegetation management. The 2015 Tree Inside Right-Of-Way SAIFI, CAIDI, and SAIDI metrics are 38%, 5%, and 40%, respectively, below the average Tree Inside Right-Of-Way SAIFI, CAIDI, and SAIDI metrics for the period 2010-2015.

Since the VM Program began in July 2010, the annual number of tree inside ROW outages (excluding major event days) has been reduced by approximately 51% from 2,248 to 1,102; the

annual number of customer minutes of interruption associated with these events has been reduced by approximately 49% from 12,247,282 to 6,236,943.



**E. VM Program-To-Date Expenditures**

Beginning with the commencement of the VM Program in July 2010, Kentucky Power committed to expend \$99,898,620 on VM O&M through December 31, 2015. Through that period the Company expended \$101,342,631 or \$1,444,011 (1.4%) more than its commitment. Kentucky Power’s VM Program capital spending commitment during the same period was \$11,220,000. It exceeded that target by 57% (\$6,447,154).

Kentucky Power Company continues to review its VM Program processes to permit it to transition in a safe, cost-efficient, and effective manner to a five-year cycle on or before July 1, 2019.

**F. Balancing Account**

Under paragraph 8(e)(ii) of the Settlement Agreement, a one-way balancing account was established beginning July 1, 2015. The account, which requires the Company to make \$27,661,060 in VM O&M expenditures during each July 1 through June 30 period (“Vegetation Management Year”), will continue until base rates are next established. The balancing account

will track any shortfall or over-expenditure in Vegetation Management Year VM O&M expenditures.

When Company base rates are next established any cumulative shortfall in VM O&M expenditures will be refunded to customers or used to reduce the Company's revenue requirement. The Company may not recover any cumulative over-expenditure.

The Company's VM O&M expenditures through December 31, 2015 (50% of the Vegetation Management Year) were \$13,620,717. These expenditures represents 49.2% of the July 1, 2015 through June 30, 2016 Vegetation Management Year requirement. Kentucky Power anticipates meeting the \$27,661,060 target by the close of the Vegetation Management Year.

**G Revised Kentucky Power Company's 2016 Distribution VM Plan**

Kentucky Power revised its 2016 Vegetation Management Plan (filed September 30, 2015) to reflect anticipated efficiency improvements and the fact that in 2015 the Company was able to re-clear 512 circuit miles scheduled for re-clearing in 2016 or 2015-2016. The revised plan will continue to focus on full circuit re-clearing (Task 1) and interim re-clearing (Task 2).

The revised 2016 Kentucky Power Distribution VM Plan projected expenditures for the three districts in its service territory for Task 1 and Task 2 are shown in Table 5. The revised 2016 Kentucky Power Distribution targeted mileage by district is shown in Table 6.

<b>Table 5: 2016 Kentucky Power Company Revised Distribution VM O&amp;M Forestry Plan (Task 1 &amp; Task 2) - Summary</b>				
<b><u>ACTIVITY</u></b>	<b><u>Total O&amp;M</u></b>	<b><u>Ashland</u></b>	<b><u>Hazard</u></b>	<b><u>Pikeville</u></b>
<b>Total Circuit Re-clearing</b>	<b>\$24,573,850</b>	\$7,457,217	\$4,142,475	\$12,974,158
<b>Total Spray</b>	<b>\$1,200,000</b>	\$288,000	\$432,000	\$480,000
<b>Contract Foresters</b>	<b>\$310,993</b>	\$103,664	\$103,664	\$103,665
<b>KPI INCENTIVE PROGRAM - Contractor Field Personnel</b>	<b>\$586,774</b>	\$195,591	\$195,591	\$195,592
<b>INTERNAL - Existing KY Forestry Staff</b>	<b>\$556,002</b>	\$185,334	\$155,334	\$215,334
<b>Unscheduled/Reactive Maintenance</b>	<b>\$436,979</b>	\$35,000	\$239,066	\$162,913
<b>Total O&amp;M</b>	<b>\$27,664,598</b>	<b>\$8,264,806</b>	<b>\$5,268,130</b>	<b>\$14,131,662</b>
<b>Forestry Capital</b>	<b>\$2,433,956</b>			
<b>Total KYPCO Forestry Budget</b>	<b>\$30,098,554</b>			



<b>Table 6: 2016 Kentucky Power Revised Distribution Targeted Mileage</b>			
<b>District</b>	<b>Planned Miles Initial Re-clear Task 1</b>	<b>Planned Miles Interim Re-clear Task 2</b>	<b>Total VM Target</b>
<b>Ashland</b>	394	210	604
<b>Hazard</b>	221	255	476
<b>Pikeville</b>	585	306	891
<b>Totals</b>	<b>1200</b>	<b>771</b>	<b>1971</b>

See Attachment 3 to this report for the 2016 revised Distribution VM Plan on a circuit-by-circuit basis. Adjustments to the Plan (Task 1 and Task 2) include: completion of circuit miles planned in 2015 that were not completed, additional circuit miles and circuits added where targets were exceeded in 2015, areas where reliability problems have increased, and forestry review of proposed rights-of-ways to be re-cleared.

The Commission’s June 22, 2015 Order in Case No. 2014-00396 directed Kentucky Power to seek leave of the Commission prior to “altering any proposed spending that deviates by 10 percent or more from the total amount or within each Division as set forth in an annual filing on September 30.”<sup>2</sup> The revised 2016 Distribution VM Plan proposes to increase total O&M spending by \$3,538 (0.0128%) and total forestry capital spending by \$911,631 (59.88%). By district, Kentucky Power proposes to modify O&M spending under the revised plan as follows: expenditures in the Ashland district will increase \$117,789 (1.45%); expenditures in the Hazard district will decrease by \$1,498,375 (-22.14%); and expenditures in the Pikeville district will increase \$1,384,124 (10.86%).

The proposed shift in spending between the three districts will permit Kentucky Power to maintain the Task 2 mileage targets by district, maintain the Task 1 mileage target for the Hazard district, and increase the Task 1 mileage targets for the Ashland (50 miles or 14.53%) and Pikeville (164 miles or 38.95%) districts . The shift in spending will permit the Company to deploy its resources efficiently, move the individual districts to similar states of completion of

---

<sup>2</sup> Order, *In the Matter of: Application of Kentucky Power Company For: (1) A General Adjustment Of Its Rates For Electric Service; (2) An Order Approving Its 2014 Environmental Compliance Plan; An Order Approving Its Tariffs And Riders; And (4) An Order Granting All Other Required Approvals And Relief*, Case No. 2014-00396 at 77 (Ky. P.S.C. June 22, 2015)

Task 1 work, and begin the Task 3 five year-cycle in each of the three districts at approximately the same time.

Kentucky Power will promptly file its request for leave to deviate from its September 2015 plan.

2015 KY POWER FORESTRY CIRCUIT HISTORY				Costs that were not allocated to a circuit include; internal labor & fleet costs, some unscheduled hotspot maintenance, trouble restoration work, tree ticket investigation, contract clerical work, contract foresters, tree contractors' field supervision, and incentive program for tree contractor's employees.							COMMENTS
Task 1 - Ashland District											
Circuit data in BOLD represent Full-Circuit Reclearing											
Circuit Number	Circuit Name	Cost (includes O&M and Capital)	Total Line Miles	Reclearing Miles Planned	Reclearing Miles Complete	Brush Cut (acres)	Brush Spray (acres)	Tree Growth Regulator	Tree Removal	Tree Trim	COMMENTS
2206403	South Neal - Whites Creek	\$8,856.02	38.8	0.0	20.0	0.0	31.5		4	70	Started Full Circuit Re-clear - completion in 2016
3000202	Big Sandy - Burnaugh North	\$894,819.60	84.4	84.4	84.5	52.3	133.1		9,382	4,731	Completed Full Circuit Re-clear
3000302	Bellefonte - Flatwoods	\$78,288.57	3.2	0.0	3.2	0.0	0.0		739	197	Completed Full Circuit Re-clear
3000304	Bellefont - Town Center	\$27,870.24	2.7	2.7	2.7	0.0	0.0		616	64	Completed Full Circuit Re-clear
3000901	Highland - Russell	\$302,040.13	24.3	26.4	24.3	5.0	0.0		1,375	1,060	Completed Full Circuit Re-clear
3000902	Highland - Flatwoods	\$215,388.06	13.9	13.9	13.9	7.5	0.0		2,128	1,290	Completed Full Circuit Re-clear
3000903	Highland - Wurtland	\$191,247.17	13.4	13.4	13.4	2.3	0.0		1,156	634	Completed Full Circuit Re-clear
3001201	Howard Collins - 13th St.	\$207,286.39	13.2	13.2	13.2	2.5	0.0		832	976	Completed Full Circuit Re-clear
3001203	Howard Collins - Floyd St.	\$144,260.84	11.1	11.7	11.1	2.3	0.0		583	735	Completed Full Circuit Re-clear
3001402	Louisa - High Bottom	\$167,205.43	13.0	0.0	10.0	0.0	0.0		25	1	Started Full Circuit Re-clear - completion in 2016
3002101	10th Street - 6th St.	\$1,139.67	0.6	0.6	0.6	0.1	0.0		23	4	Completed Full Circuit Re-clear
3002103	10th Street - 12th St.	\$103,636.87	6.8	6.8	6.8	3.5	0.0		692	585	Completed Full Circuit Re-clear
3002104	10th Street - 10-3	\$50,694.40	3.0	3.8	3.0	0.2	0.0		84	172	Completed Full Circuit Re-clear
3002105	10th Street - Midtown	\$18,515.92	3.7	3.9	3.7	0.0	0.0		14	19	Completed Full Circuit Re-clear
3002106	10th Street - Front Street	\$8,676.82	1.8	1.8	1.8	0.4	0.0		258	15	Completed Full Circuit Re-clear
3003701	Coalton - US 60 W	\$1,024,919.00	88.7	45.2	75.0	24.5	44.6		8,755	4,576	Started Full Circuit Re-clear - completion in 2016
3004301	Siloam - Distribution	\$165,334.00	22.7	5.0	5.0	1.5	0.0		1,426	608	Finish Full circuit Reclear - carry over from 2014
3007904	Busseyville - Torchlight	\$436,705.67	98.3	98.3	97.0	69.9	125.3		12,535	4,149	Completed Full Circuit Re-clear
3007905	Busseyville - Mattie	\$165,443.52	91.0	0.0	23.0	0.0	0.0		2,106	839	Started Full Circuit Re-clear - completion in 2016
3008003	47th Street - Catlettsburg	\$260,186.68	26.8	28.0	26.8	9.9	15.8		3,425	1,223	Completed Full Circuit Re-clear
3010602	Russell - Bear Run	\$0.00	13.0	0.0	3.0	0.0	28.9		467	126	Started Full Circuit Re-clear - completion in 2016
3010603	Russell - Ashland Oil	\$4,491.86	1.1	0.0	1.1	0.0	0.0		29	6	Completed Full Circuit Re-clear
3110901	Wurtland - Wurtland	\$5,136.75	2.9	2.9	2.9	0.0	0.0		5	16	Completed Full Circuit Re-clear
3116102	Grayson - Dixie Park	\$279,382.62	33.5	0.0	20.6	0.0	0.0		1,353	1,162	Started Full Circuit Re-clear - completion in 2016
3117601	Princess - Meade Station	\$357,805.41	46.8	0.0	34.2	16.2	0.0		3,449	2,066	Started Full Circuit Re-clear - completion in 2016
3000303	Bellefonte - Bellefonte	\$980.99	56.2	0.0	1.9	0.0	0.0		11	0	Quality of Service Work
3000801	Hayward - Halderman	\$13,481.04	117.0	0.0	1.0	0.0	0.0		405	26	Quality of Service Work
3000802	Hayward - Lawton	\$728.31	36.3	0.0	0.0	0.0	0.0		0	0	Work Planning for spray - deferred
3001002	Hitchins - Willard	\$114,620.17	152.0	0.0	0.0	38.4	0.0		1,387	0	Widening
3001003	Hitchins - Grayson	\$954.83	48.4	0.0	0.0	0.0	0.0		1	0	Capital removal
3001004	Hitchins - EK Road	\$323.84	31.4	0.0	0.0	0.0	0.0		13	0	Quality-of-Service Work
3001101	Hoods Creek - Summitt	\$219.39	22.7	0.0	0.0	0.0	0.0		2	0	Quality-of-Service Work
3001102	Hoods Creek - Rural	\$2,104.06	47.0	0.0	0.0	0.2	0.0		30	0	Quality-of-Service Work
3001401	Louisa - City	\$2,574.35	10.0	0.0	0.0	0.0	0.0		6	9	Quality-of-Service Work
3003702	Coalton - Cannonsburg	\$13,390.76	23.3	0.0	0.0	0.2	17.8		75	15	Quality of Service work; Ground Spray application
3003703	Coalton - Trace Creek	\$362.40	82.5	0.0	0.0	0.0	0.0		0	2	Quality-of-Service Work
3007903	Busseyville - Louisa	\$3,202.53	44.0	0.0	0.0	0.0	0.0		83	11	Quality-of-Service Work
3007906	Busseyville - Walbridge	\$150,040.76	94.0	0.0	0.0	3.8	207.5		239	135	Ground and Aerial Spray, Widening
3008701	Cannonsburg - Cannonsburg	\$37,445.61	63.0	0.0	0.0	0.0	0.0		91	9	Widening
3008702	Cannonsburg - Rt. 3	\$1,779.95	100.0	0.0	0.0	0.2	0.0		94	18	Danger tree removal
3010601	Russell - Kenwood	\$660.53	20.7	0.0	0.0	0.0	0.0		25	0	Quality-of-Service Work
3110902	Wurtland - Greenup	\$1,994.09	50.8	0.0	0.0	0.0	2.3		0	0	Quality-of-Service Work
3110903	Wurtland - Rt. 503	\$1,877.74	46.0	0.0	0.0	0.0	0.0		42	0	Quality-of-Service Work
3116101	Grayson - Lansdowne	\$37,385.86	36.1	0.0	0.0	0.0	0.0		653	20	Widening
<b>ASHLAND DISTRICT Totals</b>		<b>\$5,503,458.85</b>		<b>362.0</b>	<b>503.7</b>	<b>240.9</b>	<b>606.8</b>	<b>0</b>	<b>54,618</b>	<b>25,569</b>	

2015 KY POWER FORESTRY CIRCUIT HISTORY				Costs that were not allocated to a circuit include; internal labor & fleet costs, some unscheduled hotspot maintenance, trouble restoration work, tree ticket investigation, contract clerical work, contract foresters, tree contractors' field supervision, and incentive program for tree contractor's employees.							
Task 1 - Hazard District											
Circuit data in BOLD represent Full-Circuit Re-clearing											
Circuit Number	Circuit Name	Cost (includes O&M and Capital)	Total Line Miles	Re-clearing Miles Planned	Re-clearing Miles Complete	Brush Cut (acres)	Brush Spray (acres)	Tree Growth Regulator	Tree Removal	Tree Trim	COMMENTS
3303901	Leslie - Hyden	\$977,121.66	88.2	88.2	85.6	62.3	11.9		20,985	3,062	Completed Full Circuit Re-clear
3308601	Collier - Upper Rockhouse	\$129,377.66	37.4	28.4	28.4	22.6	0.8		1,770	689	Completed Full Circuit Re-clear
3309103	Whitesburg - Cowan	\$383,980.22	43.1	34.9	43.1	56.8	0.1		2,265	1,118	Completed Full Circuit Re-clear
3309302	Vicco - Jeff	\$263,107.03	84.7	19.0	23.2	46.2	33.7		7,149	1,014	Started Full Circuit Re-clear
3309902	Slemp - Leatherwood	\$248,130.08	71.3	0.0	18.0	0.0	1.6		7,766	789	Started Full Circuit Re-clear
3310501	Haddix - Quicksand	\$1,084,048.07	202.0	42.2	55.0	125.9	4.4		12,899	1,393	Started Full Circuit Re-clear
3310502	Haddix - Canoe	\$137,354.32	125.0	0.0	16.0	0.3	4.2		2,777	561	Started Full Circuit Re-clear
3401302	Fleming - McRoberts	\$148,426.89	30.2	0.0	10.0	0.0	0.4		881	471	Started Full Circuit Re-clear
3420001	Softshell - Vest	\$250,302.22	59.0	0.0	18.0	1.8	43.5		5,671	654	Started Full Circuit Re-clear
3420002	Softshell - Leburn	\$509,919.04	49.5	28.3	49.5	52.6	45.8		8,188	2,539	Completed Full Circuit Re-clear
3300601	Bluegrass - Walkertown	\$529.85	29.0	0.0	0.0	0.0	0.0		1	0	Quality-of-Service Work
3300602	Bluegrass - Hazard	\$11,802.63	11.4	0.0	0.0	1.3	0.0		352	4	Widening
3301101	Chaves - Chaves	\$25,475.26	69.1	0.0	0.0	0.9	2.4		186	7	Quality-of-Service Work, Widening
3301401	Combs - Combs	\$8,642.34	9.0	0.0	0.0	0.0	0.0		16	0	Quality-of-Service Work
3301402	Combs - Airport Gardens	\$79,635.24	43.0	0.0	0.0	0.0	2.8		739	0	Widening
3301701	Daisy - Leatherwood	\$9,297.23	88.0	0.0	0.0	0.0	1.1		136	0	Ground Spray, Widening
3303902	Leslie - Wootton	\$167,320.44	134.0	0.0	0.0	6.2	309.7		149	39	Ground Spray, Widening
3303903	Leslie - Hals Fork	\$8,983.75	76.0	0.0	0.0	0.0	6.1		0	0	Ground Spray - Basal
3307301	Bulan - Ary Hiner	\$1,324.43	54.0	0.0	0.0	0.0	1.7		0	0	Ground Spray - Basal
3307302	Bulan - Ajax Dwarf	\$1,476.27	40.0	0.0	0.0	0.0	1.8		0	0	Ground Spray - Basal
3308002	Jackson - Panbow	\$26,013.31	31.6	0.0	0.0	0.0	2.6		2	0	Ground Spray - Basal
3308401	Beckham - Hindman	\$56,305.18	102.0	0.0	0.0	0.0	8.9		477	0	Widening, Ground Spray
3308402	Beckham - Carr Creek	\$58,961.71	111.0	0.0	0.0	0.0	0.0		918	26	Widening
3308502	Bonnyman - Hazard	\$5,369.12	43.4	0.0	0.0	0.0	3.4		0	0	Ground Spray - Basal
3308503	Bonnyman - Big Creek	\$8,256.23	84.0	0.0	0.0	0.0	2.0		51	0	Ground Spray - Basal, Widening
3308602	Collier - Lower Rockhouse	\$8,244.25	66.0	0.0	0.0	0.0	1.2		60	9	Widening
3308603	Collier - Smoot Creek	\$57,660.03	81.0	0.0	0.0	0.4	40.4		192	15	Ground Spray, Widening
3309001	Jeff - Boone Ledge	\$13,526.82	5.0	0.0	0.0	0.0	0.6		159	20	Widening
3309002	Jeff - Jeff	\$16,514.28	5.7	0.0	0.0	0.0	0.3		14	3	Widening
3309003	Jeff - Viper	\$3,556.50	43.5	0.0	0.0	0.0	1.8		0	0	Ground Spray - Basal
3309101	Whitesburg - Whitesburg	\$862.96	10.0	0.0	0.0	0.0	0.0		3	0	Quality-of-Service Work
3309301	Vicco - Red Fox	\$7,824.94	48.5	0.0	0.0	1.2	0.0		113	20	Widening
3311101	Stinnett - Redbird	\$5,463.95	121.0	0.0	0.0	0.0	3.5		1	0	Ground Spray - Basal
3311102	Stinnett - Beech Fork	\$2,729.78	10.0	0.0	0.0	0.0	3.3		0	0	Ground Spray - Basal
3311103	Stinnett - Wendover	\$2,463.70	36.3	0.0	0.0	0.0	2.4		0	0	Ground Spray - Basal
3311401	Reedy - Deane	\$8,842.35	44.5	0.0	0.0	0.0	14.5		0	0	Ground Spray - Basal
3311701	Shamrock - Shamrock	\$33,266.25	54.0	0.0	0.0	0.0	12.1		0	0	Ground Spray - Basal
3312201	Engle - Industrial Park	\$15,039.97	4.1	0.0	0.0	0.0	32.9		18	0	Ground Spray, Widening
3312202	Engle - Grapewine	\$91,644.86	101.2	0.0	0.0	0.0	146.5		1	0	Ground Spray
3312901	Jenkins - Kona	\$2,565.63	26.0	0.0	0.0	0.0	0.2		6	0	Quality-of-Service Work
3312902	Jenkins - Jenkins	\$1,999.55	23.8	0.0	0.0	0.0	0.1		0	3	Quality-of-Service Work
3401301	Fleming - Neon	\$4,951.64	21.0	0.0	0.0	0.0	0.5		17	0	Quality-of-Service Work
3409503	Burdine - Jenkins	\$1,838.44	8.2	0.0	0.0	0.0	0.3		7	4	Quality-of-Service Work
<b>HAZARD DISTRICT Totals</b>		<b>\$4,880,156.08</b>		<b>241.0</b>	<b>346.8</b>	<b>378.5</b>	<b>749.5</b>	<b>0.0</b>	<b>73,969.0</b>	<b>12,440.0</b>	

2015 KY POWER FORESTRY CIRCUIT HISTORY				Costs that were not allocated to a circuit include; internal labor & fleet costs, some unscheduled hotspot maintenance, trouble restoration work, tree ticket investigation, contract clerical work, contract foresters, tree contractors' field supervision, and incentive program for tree contractor's employees.							
Task 1 - Pikeville District											
Circuit data in BOLD represent Full-Circuit Re-clearing											
Circuit Number	Circuit Name	Cost (includes O&M and Capital)	Total Line Miles	Re-clearing Miles Planned	Re-clearing Miles Complete	Brush Cut (acres)	Brush Spray (acres)	Tree Growth Regulator	Tree Removal	Tree Trim	COMMENTS
3200204	Barrenshe - Pounding Mill	\$217,908.77	16.0	9.0	16.0	19.7	0.0		2,915	683	Completed Full Circuit Re-clear
3401102	Falcon - Salyersville	\$323,715.68	44.0	0.0	43.0	56.3	0.0		3,636	1,356	Completed Full Circuit Re-clear
3401103	Falcon - Burning Fork	\$471,130.90	72.0	66.0	72.0	111.7	0.1		7,026	2,141	Completed Full Circuit Re-clear
3402003	Keyser - Mullins	\$329,713.23	30.0	30.0	30.0	34.3	0.0		2,590	1,155	Completed Full Circuit Re-clear
3403001	Pikeville - City	\$242,523.44	23.9	23.9	11.0	0.0	0.0		869	197	Started Full Circuit Re-clear - completion in 2016
3403003	Pikeville - Cedar Creek	\$492,755.36	28.0	28.0	28.0	0.5	1.2		3,384	667	Completed Full Circuit Re-clear
3403201	Beaver Creek - Ligon	\$819,562.42	80.0	53.0	58.0	42.1	44.6		8,404	1,740	Completed Full Circuit Re-clear
3404002	Spring Fork - Single Phase	\$84,809.16	11.0	7.9	11.0	26.8	0.0		2,943	127	Completed Full Circuit Re-clear
3407102	Topmost - Caney	\$2,130.26	4.4	4.4	0.0	0.0	0.0		0	0	Full Circuit Re-clear - deferred
3408303	Coleman - Peter Creek	\$1,050,715.02	40.0	39.7	40.0	56.1	2.7		14,058	3,057	Completed Full Circuit Re-clear
3408304	Coleman - Calloway	\$928,445.66	36.0	0.0	36.0	31.5	0.0		14,052	2,316	Completed Full Circuit Re-clear
3409302	Kenwood - Auxier	\$384,466.11	41.6	41.6	39.0	68.3	0.0		5,959	1,868	Started Full Circuit Re-clear - completion in 2016
3410602	E. Prestonsburg - Lancer	\$261,061.42	25.4	25.4	25.0	36.5	0.0		5,127	1,130	Completed Full Circuit Re-clear
3411401	Dewey - Inez A	\$451,131.89	171.0	0.0	27.5	65.1	0.6		5,546	1,452	Started Full Circuit Re-clear - completion in 2016
3411801	Johns Creek - Meta	\$1,840,905.02	167.0	40.7	80.1	136.5	11.5		26,190	3,411	Started Full Circuit Re-clear
3411802	Johns Creek - Raccoon	\$394,115.82	84.0	0.0	25.7	0.0	0.0		4,622	655	Started Full Circuit Re-clear - completion in 2016
3413401	Garrett - Garrett	\$355,970.94	38.0	38.0	38.0	67.1	0.0		6,069	1,396	Completed Full Circuit Re-clear
3451201	Beefhide - Beefhide	\$66,305.47	5.4	5.4	5.4	13.2	0.0		1,381	25	Completed Full Circuit Re-clear
2150103	Sprigg - Sprigg	\$1,690.04		0.0	0.0	0.0	1.8		0	0	Ground Spray
3150501	Borderland - Nolan A	\$835.31		0.0	0.0	0.0	0.0		12	0	Widening
3150502	Borderland - Chattaroy	\$3,616.30		0.0	0.0	1.0	0.0		137	0	Quality-of-Service Work
3200301	Belfry - Belfry	\$17,533.19		0.0	0.0	2.6	0.0		189	0	Quality-of-Service Work
3200302	Belfry - Toler	\$4,775.95		0.0	0.0	0.3	0.0		73	0	Quality-of-Service Work
3202201	Lovely - Lovely A	\$67,027.36		0.0	0.0	0.0	45.7		0	1	Ground Spray
3202202	Lovely - Wolf Creek	\$103,782.28		0.0	0.0	0.3	36.3		320	82	Ground Spray, carry-over from 2014, work complete
3202203	Lovely - Mt. Sterling	\$61,248.71		0.0	0.0	0.0	36.9		1	0	Ground Spray
3400101	Allen - Distribution	\$526.20		0.0	0.0	0.0	0.0		10	0	Quality-of-Service Work
3400301	Betsy Layne - Mud Creek	\$2,593.15		0.0	0.0	0.0	0.0		23	8	Quality-of-Service Work
3400302	Betsy Layne - Tram	\$7,386.21		0.0	0.0	0.2	0.0		61	6	Quality-of-Service Work
3400303	Betsy Layne - Harold	\$4,582.33		0.0	0.0	0.0	0.0		38	1	Quality-of-Service Work
3400601	Burton - Bevinsville	\$45,460.23		0.0	0.0	0.0	43.7		0	0	Ground Spray
3400602	Burton - Wheelwright	\$55,884.37		0.0	0.0	0.0	62.0		0	0	Ground Spray
3400701	Draffin - Belcher	\$1,099.41		0.0	0.0	0.0	0.0		2	0	Quality-of-Service Work
3400901	Elkhorn City - City	\$53,562.21		0.0	0.0	0.0	60.3		3	0	Ground Spray
3401001	Elwood - Dorton	\$99,038.80		0.0	0.0	0.0	0.0		320	0	Widening
3401702	Henry Clay - Regina	\$39,271.37		0.0	0.0	0.0	50.2		6	0	Ground Spray
3401801	Index - Distribution	\$25,817.87		0.0	0.0	0.0	0.0		329	26	Widening
3401802	Index - Hospital	\$966.06		0.0	0.0	0.0	0.0		8	0	Quality-of-Service Work
3402002	Keyser - Stonecoal	\$199.43		0.0	0.0	0.0	0.0		9	0	Quality-of-Service Work
3402202	McKinney - Gibson	\$58,505.83		0.0	0.0	0.0	80.6		31	1	Ground Spray
3402801	Painstville - City	\$1,034.00		0.0	0.0	0.0	0.0		1	0	Quality-of-Service Work
3403202	Beaver Creek - Price	\$56,357.76		0.0	0.0	0.0	18.0		2	0	Ground Spray
3403701	Russell Fork - Little Beaver	\$734.19		0.0	0.0	0.0	0.0		3	0	Quality-of-Service Work
3403801	Second Fork - Distribution	\$2,989.00		0.0	0.0	0.0	0.0		90	0	Quality-of-Service Work
3407101	Topmost - Dema	\$8,517.59		0.0	0.0	0.1	0.0		115	1	Quality-of-Service Work
3408103	Salisbury - Martin	\$3,726.72		0.0	0.0	0.0	0.0		15	5	Quality-of-Service Work
3408402	Kimper - Grapevine	\$5,750.77		0.0	0.0	0.0	0.0		75	7	Quality-of-Service Work
3409003	West Paintsville - Plaza	\$846.46		0.0	0.0	0.0	0.0		0	6	Quality-of-Service Work
3409301	Kenwood - W. Van Lear	\$2,366.12		0.0	0.0	0.0	0.0		3	0	Quality-of-Service Work
3409303	Kenwood - Hager Hill	\$461.87		0.0	0.0	0	0		3	0	Quality-of-Service Work
3410503	South Pikeville - Hospital	\$15,431.54		0.0	0.0	0	0		0	0	Planning for ground spray
3410601	E. Prestonsburg - Prestonsburg	\$8,034.72		0.0	0.0	0.0	0.0		12	0	Quality-of-Service Work
3411901	Fords Branch - Shelby	\$1,208.07		0.0	0.0	0.0	0.0		10	1	Quality-of-Service Work
3411902	Fords Branch - Robinson Ck	\$1,958.64		0.0	0.0	0.0	0.0		3	0	Quality-of-Service Work
3412901	Weeksbury - Distribution	\$47,924.14		0.0	0.0	0.1	48.6		25	0	Ground Spray
3413402	Garrett - Lackey	\$2,011.21		0.0	0.0	0.0	0.0		3	4	Quality-of-Service Work
3414501	Consol - Coal Co	\$6,110.65		0.0	0.0	0.8	0.0		138	33	Quality-of-Service Work
3417601	New Camp - South Side	\$36,433.96		0.0	0.0	0.0	17.5		0	0	Ground Spray
3420102	Mayo Trail - Euclid	\$12,712.41		0.0	0.0	0.0	0.0		161	4	Quality-of-Service Work
	<b>PIKEVILLE DISTRICT Totals</b>	<b>\$9,587,379.00</b>		<b>413.0</b>	<b>585.7</b>	<b>771.1</b>	<b>562.3</b>	<b>0.0</b>	<b>117,002</b>	<b>23,562</b>	
	<b>KY POWER Task 1 Totals</b>	<b>\$19,970,993.93</b>		<b>1,016.0</b>	<b>1,436.2</b>	<b>1,390.5</b>	<b>1,918.6</b>	<b>0</b>	<b>245,589</b>	<b>61,571</b>	

2015 KY POWER FORESTRY CIRCUIT HISTORY Ashland District - Task 2				Costs that were not allocated to a circuit include; internal labor & fleet costs, some unscheduled hotspot maintenance, trouble restoration work, tree ticket investigation, contract clerical work, contract foresters, tree contractors' field supervision, and incentive program for tree contractor's employees.							
Circuit Number	Circuit Name	Cost (includes O&M and Capital)	Total Line Miles	Reclearing Miles Planned	Reclearing Miles Complete	Brush Cut (acres)	Brush Spray (acres)	Tree Growth Regulator	Tree Removal	Tree Trim	COMMENTS
3000201	Big Sandy - Fallsburg South	\$292,425.41	158.0	24.3	29.3	1.9	73.1		999	1,357	Started interim re-clear
3000701	Graysbranch - Graysbranch	\$116,766.65	66.0	24.3	27.7	2.8	0.0		620	440	Started interim re-clear
3103101	Olive Hill - Globe	\$272,761.67	117.0	24.3	27.6	7.6	0.0		1,397	914	Started interim re-clear
<b>ASHLAND DISTRICT Totals</b>		<b>\$681,953.73</b>		<b>72.9</b>	<b>84.6</b>	<b>12.3</b>	<b>73.1</b>	<b>0</b>	<b>3,016</b>	<b>2,711</b>	
<b>Hazard District - Task 2</b>											
3302701	Hazard - Blackgold	\$325,278.60	55.0	55.0	55.0	0.0	3.5		5,511	841	Completed interim re-clear
3302703	Hazard - Hazard	\$92,110.95	11.2	11.2	11.2	0.0	0.0		449	505	Completed interim re-clear
3309104	Whitesburg - Crafts Colley	\$234,733.64	27.6	17.4	27.2	0.0	3.5		3,542	1,234	Interim re-clear
3309902	Slemp - Leatherwood	\$23,886.62	71.2	0.0	4.0	0.0	3.5		601	147	Started interim re-clear
3309903	Slemp - Beech Fork	\$2,697.09	1.7	1.7	1.7	0.0	0.0		75	3	Completed interim re-clear
3309904	Slemp - Royal Diamond	\$4,339.21	2.2	2.2	2.2	0.0	0.0		282	8	Completed interim re-clear
3311101	Stinnett - Redbird	\$123,631.67	120.7	0.0	16.0	0.0	3.5		2,806	571	Started interim re-clear
3311102	Stinnett - Beech Fork	\$21,916.02	9.5	8.0	8.0	0.0	3.3		228	26	Started interim re-clear
3314401	Mayking - Ermine	\$192,059.81	28.8	18.6	28.6	5.9	21.1		2,284	1,013	Interim re-clear
3314402	Mayking - Millstone	\$98,196.20	55.0	55.0	55.0	24.9	17.4		2,633	1,320	Completed interim re-clear
<b>HAZARD DISTRICT Totals</b>		<b>\$1,118,649.81</b>		<b>169.1</b>	<b>208.9</b>	<b>30.8</b>	<b>55.8</b>	<b>0</b>	<b>18,411</b>	<b>5,668</b>	
<b>Pikeville District - Task 2</b>											
3200202	Barrenshe - Vulcan A	\$11,592.67	45.0	0.0	0.0	0.0	0.0		0	0	Started interim re-clear
3400101	Allen - Distribution	\$2,293.76	27.8	0.0	0.0	0.0	0.0		0	0	Started interim re-clear
3401002	Elwood - Virgie	\$13,332.03	73.8	0.0	0.0	0.0	0.0		0	0	Started interim re-clear
3404302	Sidney - Coburn Mtn.	\$1,104,469.42	47.0	47.0	47.0	103.5	5.6		6,497	3,315	Completed interim re-clear
3409002	W. Paintsville - Staffordsville	\$441,628.83	46.7	22.0	33.0	4.3	0.0		3,050	1,290	Started interim re-clear
3409401	Feds Creek - Feds Creek	\$394,769.56	41.0	41.0	41.0	17.6	94.6		1,882	559	Completed interim re-clear
3409402	Feds Creek - Lick Creek	\$273,518.86	18.0	18.0	18.0	1.1	21.8		1,846	856	Completed interim re-clear
3974101	Big Rock - Conaway	\$7,066.47	1.0	1.0	1.0	0.0	0.0		15	29	Completed interim re-clear
<b>PIKEVILLE DISTRICT Totals</b>		<b>\$2,248,671.60</b>		<b>129.0</b>	<b>140.0</b>	<b>126.5</b>	<b>122.0</b>	<b>0</b>	<b>13,290</b>	<b>6,049</b>	
<b>Total Kentucky Power - Task 2</b>		<b>\$4,049,275.14</b>		<b>371</b>	<b>433.5</b>	<b>169.6</b>	<b>250.9</b>	<b>0</b>	<b>34,717</b>	<b>14,428</b>	

2016 Kentucky Power Revised Distribution VM PLAN						Costs that are not allocated to a circuit include; internal labor & fleet costs, unscheduled hotspot maintenance, trouble restoration work, tree ticket investigation, contract clerical work, contract foresters, tree contractors' field supervision, and incentive program for tree contractor's employees.				
Task 1 Full Circuit Re-Clearing Plan										
DISTRICT	STATION NAME	CIRCUIT NAME	CIRCUIT NUMBER	CIRCUIT LINE MILES	MILES PLANNED	PROJECTED O&M COST per MILE	O&M	FORESTRY CAPITAL ASSOCIATED WITH RE-CLEARING	TOTAL COST	COMMENTS
ASH	Ashland	25th St	3000101	1.4	1.4	\$11,300	\$15,820	\$1,740	\$17,560	Full Circuit Re-clear
ASH	Ashland	29th St	3000102	6.8	6.8	\$11,300	\$76,840	\$8,452	\$95,292	Full Circuit Re-clear
ASH	Ashland	14th St	3000103	1.3	1.3	\$11,300	\$14,690	\$1,616	\$16,306	Full Circuit Re-clear
ASH	Ashland	3rd St	3000104	0.2	0.2	\$11,300	\$2,260	\$249	\$2,509	Full Circuit Re-clear
ASH	Ashland	1st St	3000105	1.7	1.7	\$11,300	\$19,210	\$2,113	\$21,323	Full Circuit Re-clear
ASH	Princess	Meade	3117601	46.8	12.6	\$11,300	\$142,380	\$15,662	\$158,042	Complete Full Circuit Re-clear
ASH	Princess	Rt 180	3117602	23.1	12.2	\$11,300	\$137,860	\$15,165	\$153,025	Full Circuit Re-clear
ASH	Howard Collins	Summit	3001204	25.4	25.4	\$11,300	\$287,020	\$31,572	\$318,592	Full Circuit Re-clear
ASH	Grayson	Dixie Park	3116102	33.5	12.9	\$11,300	\$145,770	\$16,035	\$161,805	Complete Full Circuit Re-clear
ASH	Grayson	Lansdowne	3116101	35.3	35.3	\$11,300	\$398,890	\$43,878	\$442,768	Full Circuit Re-clear
ASH	Hitchens	Grayson	3001003	48.0	8.8	\$11,300	\$99,440	\$10,938	\$110,378	Begin Full Circuit Re-clear
ASH	Belhaven	Argillite	3116703	27.6	27.6	\$11,300	\$311,880	\$34,307	\$346,187	Full Circuit Re-clear
ASH	Belhaven	Indian Run	3116702	18.9	18.9	\$11,300	\$213,570	\$23,493	\$237,063	Full Circuit Re-clear
ASH	Belhaven	Diedrich	3116701	8.9	8.9	\$11,300	\$100,570	\$11,063	\$111,633	Full Circuit Re-clear
ASH	Russell	Bear Run	3010602	13.0	10.0	\$11,300	\$113,000	\$12,430	\$125,430	Complete Full Circuit Re-clear
ASH	Russell	Ashland Oil	3010603	1.1	1.1	\$11,300	\$12,430	\$1,367	\$13,797	Full Circuit Re-clear
ASH	Busseyville	Louisa	3007903	44.0	44.0	\$11,300	\$497,200	\$54,692	\$551,892	Full Circuit Re-clear
ASH	Busseyville	Mattie	3007905	92.5	69.5	\$11,300	\$785,350	\$86,389	\$871,739	Complete Full Circuit Re-clear
ASH	South Neal	Whites Creek	2206403	38.8	18.8	\$11,300	\$212,440	\$23,368	\$235,808	Complete Full Circuit Re-clear
ASH	Hoods Creek	Rural	3001102	47.2	32.2	\$11,300	\$363,860	\$40,025	\$403,885	Full Circuit Re-clear
ASH	Louisa	High Bottom	3001402	13.0	3.0	\$11,300	\$33,900	\$3,729	\$37,629	Complete Full Circuit Re-clear
ASH	Coalton	US 60 W	3003701	88.7	13.7	\$11,300	\$154,810	\$17,029	\$171,839	Complete Full Circuit Re-clear
ASH	Coalton	Trace Creek	3003703	82.5	27.7	\$11,300	\$313,010	\$34,431	\$347,441	Begin Full Circuit Re-clear
<b>Ashland District (Task 1) Totals</b>					<b>394.0</b>		<b>\$4,452,200</b>	<b>\$489,742</b>	<b>\$4,941,942</b>	
HAZ	Bluegrass	Walkertown	3300601	28.5	15.8	\$10,560	\$166,848	\$33,370	\$200,218	Full Circuit Re-clear
HAZ	Chavies	Chavies	3301101	68.1	20.0	\$10,560	\$211,200	\$42,240	\$253,440	Begin Full Circuit Re-clear
HAZ	Vicco	Jeff	3309302	84.7	29.8	\$10,560	\$314,688	\$62,938	\$377,626	Continue Full Circuit Re-clear
HAZ	Slemp	Defeated Creek	3309901	13.4	13.4	\$10,560	\$141,504	\$28,301	\$169,805	Full Circuit Re-clear
HAZ	Slemp	Leatherwood	3309902	71.3	27.7	\$10,560	\$292,512	\$58,502	\$351,014	Continue Full Circuit Re-clear
HAZ	Haddix	Quicksand	3310501	202.0	10.0	\$10,560	\$105,600	\$21,120	\$126,720	Continue Full Circuit Re-clear
HAZ	Haddix	Canoe	3310502	125.0	24.8	\$10,560	\$261,888	\$52,378	\$314,266	Continue Full Circuit Re-clear
HAZ	Fleming	Neon	3401301	20.5	20.5	\$10,560	\$216,480	\$43,296	\$259,776	Complete Full Circuit Re-clear
HAZ	Fleming	McRoberts	3401302	30.2	20.3	\$10,560	\$214,368	\$42,874	\$257,242	Complete Full Circuit Re-clear
HAZ	Softshell	Vest	3420001	59.0	38.7	\$10,560	\$408,672	\$81,734	\$490,406	Continue Full Circuit Re-clear
<b>Hazard District (Task 1) Totals</b>					<b>221.0</b>		<b>\$2,333,760</b>	<b>\$466,752</b>	<b>\$2,800,512</b>	
PKV	Dewey	Inez	3411401	171.0	143.5	\$14,420	\$2,069,218	\$186,230	\$2,255,448	Complete Full Circuit Re-clear
PKV	Johns Creek	Raccoon	3411802	84.0	58.3	\$14,420	\$840,665	\$75,660	\$916,325	Complete Full Circuit Re-clear
PKV	Betsy Layne	Tram	3400302	35.0	35.0	\$14,420	\$504,687	\$45,422	\$550,109	Full Circuit Re-clear
PKV	Henry Clay	Ashcamp	3401703	43.0	43.0	\$14,420	\$620,045	\$55,804	\$675,849	Full Circuit Re-clear
PKV	Henry Clay	Regina	3401702	110.0	49.3	\$14,420	\$710,888	\$63,980	\$774,868	Begin Full Circuit Re-clear
PKV	South Pikeville	Pikeville	3410501	10.0	10.0	\$14,420	\$144,196	\$12,978	\$157,174	Full Circuit Re-clear
PKV	Topmost	Dema	3407101	37.0	37.0	\$14,420	\$533,527	\$48,017	\$581,544	Full Circuit Re-clear
PKV	Topmost	Kite	3407103	25.0	25.0	\$14,420	\$360,491	\$32,444	\$392,935	Full Circuit Re-clear
PKV	Topmost	Caney	3407102	4.4	4.4	\$14,420	\$63,446	\$5,710	\$69,157	Full Circuit Re-clear
PKV	Pikeville	City	3403001	23.9	12.9	\$14,420	\$186,013	\$16,741	\$202,755	Complete Full Circuit Re-clear
PKV	Kenwood	Auxier	3409302	41.6	2.6	\$14,420	\$37,491	\$3,374	\$40,865	Complete Full Circuit Re-clear
PKV	Mckinney	Maytown	3402204	36.0	36.0	\$14,420	\$519,107	\$46,720	\$565,827	Full Circuit Re-clear
PKV	Garrett	Lackey	3413402	35.0	35.0	\$14,420	\$504,687	\$45,422	\$550,109	Full Circuit Re-clear
PKV	E. Prestonsburg	Prestonsburg	3410601	7.0	7.0	\$14,420	\$100,937	\$9,084	\$110,022	Full Circuit Re-clear
PKV	Prestonsburg	City	3403301	7.0	7.0	\$14,420	\$100,937	\$9,084	\$110,022	Full Circuit Re-clear
PKV	Kenwood	W. Vanlear	3409301	19.0	19.0	\$14,420	\$273,973	\$24,658	\$298,631	Full Circuit Re-clear
PKV	Index	Distribution	3401801	54.0	54.0	\$14,420	\$778,661	\$70,079	\$848,740	Full Circuit Re-clear
PKV	Middle Creek	Distribution	3402501	6.0	6.0	\$14,420	\$86,518	\$7,787	\$94,304	Full Circuit Re-clear
<b>Pikeville District (Task 1) Totals</b>					<b>585.0</b>		<b>\$8,435,490</b>	<b>\$759,194</b>	<b>\$9,194,684</b>	
<b>FULL-CIRCUIT RE-CLEARING (TASK 1) TOTALS</b>					<b>1200.0</b>		<b>\$15,221,450</b>	<b>\$1,715,688</b>	<b>\$16,937,138</b>	

2016 Kentucky Power Revised Distribution VM PLAN						Costs that are not allocated to a circuit include: internal labor & fleet costs, unscheduled hotspot maintenance, trouble restoration work, tree ticket investigation, contract clerical work, contract foresters, tree contractors' field supervision, and incentive program for tree contractor's employees.				
Task 2 Interim Re-Clearing Plan										
DISTRICT	STATION NAME	CIRCUIT NAME	CIRCUIT NUMBER	CIRCUIT LINE MILES	MILES PLANNED	PROJECTED O&M COST per MILE	O&M	FORESTRY CAPITAL ASSOCIATED WITH INTERIM RE-CLEAR	TOTAL COST	COMMENTS
ASH	Big Sandy	Fallsburg	3000201	159.9	58.1	\$14,310	\$831,388	\$33,256	\$864,644	Continue Interim Re-clear
ASH	Gray's Branch	Gray's Branch	3000701	68.3	23.0	\$14,310	\$329,121	\$13,165	\$342,286	Continue Interim Re-clear
ASH	Olive Hill	Globe	3103101	150.3	75.0	\$14,310	\$1,073,221	\$42,929	\$1,116,149	Continue Interim Re-clear
ASH	Wurtland	Route 503	3110903	45.5	18.0	\$14,310	\$257,573	\$10,303	\$267,876	Start Interim Re-clear
ASH	47th Street	39th Street	3008002	12.9	12.9	\$14,310	\$184,594	\$7,384	\$191,978	Interim Re-clear
ASH	Bellfonte	Westwood	3000302	23.0	23.0	\$14,310	\$329,121	\$13,165	\$342,286	Interim Re-clear
<b>Ashland District (Task 2) Totals</b>					<b>210.0</b>		<b>\$3,005,017</b>	<b>\$120,201</b>	<b>\$3,125,218</b>	
HAZ	Combs	Combs	3301401	9.0	9.0	\$7,093	\$63,837	\$2,553	\$66,390	Interim Re-clear
HAZ	Combs	Airport Gardens	3301402	42.9	42.9	\$7,093	\$304,290	\$12,172	\$316,461	Interim Re-clear
HAZ	Beckham	Hindman	3308401	101.5	61.5	\$7,093	\$436,220	\$17,449	\$453,668	Start Interim Re-clear
HAZ	Stinnett	Redbird	3311101	120.7	84.2	\$7,093	\$597,231	\$23,889	\$621,120	Continue Interim Re-clear
HAZ	Stinnett	Beech Fork	3311102	9.5	1.5	\$7,093	\$10,640	\$426	\$11,065	Complete Interim Re-clear
HAZ	Bluegrass	Walkertown	3300601	29.0	12.7	\$7,093	\$90,081	\$3,603	\$93,684	Start Interim Re-clear
HAZ	Reedy	Deane	3311401	43.2	43.2	\$7,093	\$306,418	\$12,257	\$318,674	Interim Re-clear
<b>Hazard District (Task 2) Totals</b>					<b>255.0</b>		<b>\$1,808,715</b>	<b>\$72,349</b>	<b>\$1,881,064</b>	
PKV	Allen	Distribution	3400101	38.0	15.0	\$14,832	\$222,484	\$8,899	\$231,383	Continue Interim Re-Clear
PKV	Elwood	Dorton	3401001	46.0	46.0	\$14,832	\$682,283	\$27,291	\$709,575	Interim Re-clear
PKV	Elwood	Virgie	3401002	71.0	71.0	\$14,832	\$1,053,090	\$42,124	\$1,095,213	Complete Interim Re-clear
PKV	Fishtrap	Distribution	3414901	4.4	4.0	\$14,832	\$59,329	\$2,373	\$61,702	Interim Re-clear
PKV	Barrenshe	Vulcan	3200202	49.0	49.0	\$14,832	\$726,780	\$29,071	\$755,851	Interim Re-clear
PKV	Fords Branch	Shelby	3411901	39.0	39.0	\$14,832	\$578,458	\$23,138	\$601,596	Interim Re-clear
PKV	Fords Branch	Robinson Creek	3411902	56.0	15.0	\$14,832	\$222,484	\$8,899	\$231,383	Interim Re-clear
PKV	Burdine	Levisa	3409502	39.0	15.0	\$14,832	\$222,484	\$8,899	\$231,383	Start Interim Re-clear
PKV	Kerwood	Hagerhill	3409303	51.0	20.0	\$14,832	\$296,645	\$11,866	\$308,511	Start Interim Re-clear
PKV	Draffin	Yellowhill	3400702	12.4	12.0	\$14,832	\$177,987	\$7,119	\$185,106	Interim Re-clear
PKV	Lovely	Lovely	3202201	41.0	20.0	\$14,832	\$296,645	\$11,866	\$308,511	Start Interim Re-clear
<b>Pikeville District (Task 2) Totals</b>					<b>306.0</b>		<b>\$4,538,668</b>	<b>\$181,547</b>	<b>\$4,720,215</b>	
<b>INTERIM RE-CLEARING (TASK 2) TOTALS</b>					<b>771</b>		<b>\$9,352,400</b>	<b>\$374,096</b>	<b>\$9,726,496</b>	



## **Kentucky Power Forestry Plan Terminology**

### **Feeder Breaker Zone**

Synonymous with Station Zone. Segment of line extending from the circuit station breaker to the first operating device. This zone includes unfused taps, but does not include fused taps.

### **Full Circuit Reclear**

Entire circuit from the station breaker to the end of the circuit.

### **Recloser Zone**

Line segment extending from a specific recloser to the next operating device. This zone includes unfused taps, but does not include fused taps.

### **Partial Reclear**

A portion of the circuit is planned for reclearing.

### **BID JOB**

Planned reclearing work released as an open, lump-sum bid for competing contractors.

### **Finish Full Circuit Reclear**

Reclearing scheduled to complete Full Circuit Reclear that began in the previous year.

### **2<sup>nd</sup> Recloser Zone**

Line segment beginning at the second operating device beyond the station circuit breaker extending to the next operating device. This zone includes unfused taps, but does not include fused taps.

### **Quality-of-Service Work**

Tree trimming or removal work scheduled for a line segment to address reliability issues. This work does not conform to reclearing specifications (e.g.-Hotspotting).

### **Cycle Buster Tree**

A tree that has to be revisited before the circuit is due for its next cycle trim.