

COMMONWEALTH OF KENTUCKY
BEFORE THE PUBLIC SERVICE COMMISSION

In the Matter of:

APPLICATION OF SHELBY ENERGY COOPERATIVE,)	
INC. FOR APPROVAL OF A PREPAY METERING)	CASE NO.
TARIFF)	2013-00129

RESPONSE TO COMMISSION STAFF'S INITIAL REQUEST FOR INFORMATION

DATED: MAY 10, 2013

VERIFICATION

The undersigned, Mary E. Purvis, being first duly sworn states that she is a Consultant for Shelby Energy Cooperative, Inc.; and that she has personal knowledge of the matters set forth in the foregoing application; and that the statements contained therein are true and correct to the best of her knowledge, information, and belief.

Mary E. Purvis
Mary E. Purvis, Consultant

COMMONWEALTH OF KENTUCKY)

)

COUNTY OF SHELBY)

Subscribed and sworn to before me by Mary E. Purvis, Consultant for Shelby Energy Cooperative, Inc. this 17 day of May, 2013.

Mary Gay Tennill
Notary Public

ID: 415621

My Commission Expires: 3-28-14

COMMISSION STAFF'S INITIAL REQUEST FOR INFORMATION
DATED MAY 10, 2013

Witness: Mary Elizabeth Purvis

Question:

1. Refer to the testimony of Mary Elizabeth Purvis ("Purvis Testimony"), Item 7.
 - a. Describe the level of interest expressed by Shelby customers for a prepay metering program.
 - b. State why Shelby proposes 500 customers as a reasonable number to expect to participate in the program.
 - c. Explain whether Shelby's prepay metering program is designed for a particular segment of its residential customer base.

Response:

- 1a. There has been no significant interest expressed by Shelby customers for a prepay metering program specifically. However; Shelby has had inquiries from members concerning other options available to avoid paying a security deposit when establishing service or when reconnecting service for non-payment of a bill. Shelby felt this would provide an option to both scenarios along with providing an opportunity for a customer to monitor and manage energy usage while serving as a personal budgeting and/or conservation tool.
- 1b. Shelby is estimating that 500 members will use the program. This number was calculated similarly to how other prepay programs calculated their initial numbers in that 500 represents three percent of its residential members.
- 1c. No particular segment of Shelby's residential customer base was targeted

COMMISSION STAFF'S INITIAL REQUEST FOR INFORMATION
DATED MAY 10, 2013

Witness: Mary Elizabeth Purvis

while designing the prepay metering program. The prepay metering program was designed to be available to any residential service and is voluntary.

COMMISSION STAFF'S INITIAL REQUEST FOR INFORMATION
DATED MAY 10, 2013

Witness: Mary Elizabeth Purvis

Question:

2. Refer to item 16 of the Purvis Testimony.
 - a. State whether Shelby has purchased any remote disconnect/reconnect collars to date. If so, provide the number that have been acquired.
 - b. Describe Shelby's plan for the acquisition of the remote disconnect/reconnect collars, specifically the expected number to be purchased and over what period of time.
 - c. Provide the total cost of the collars, broken down by purchase price and installation costs.
 - d. Provide a complete description of the collars that Shelby is proposing to purchase, including manufacturer and all features.
 - e. Describe the software necessary to support the prepay metering program and the remote disconnect/reconnect collars. Provide the total cost that Shelby will incur for software.

Response:

- 2a. Shelby has purchased and installed remote connect/disconnect collars since completing implementation of the AMI system. To date, Shelby has 1,426 remote collars installed on its system and 209 in inventory.
- 2b. Shelby expects to purchase 500 additional remote collars over a period of 12-18 months for members who select the prepay program.

COMMISSION STAFF'S INITIAL REQUEST FOR INFORMATION
DATED MAY 10, 2013

Witness: Mary Elizabeth Purvis

- 2c.** The total costs of the remote collars are as follows: The purchase price for each collar is \$185.50 and the installation cost for each collar is \$28.08. Total costs for the purchase price and installation cost respectively are \$92,750 & \$14,040.
- 2d.** The description of the remote collars currently being used by Shelby and proposed for purchase and use with the prepay metering program is the: TWACS Disconnect Switch Interbase Model # Y72190-311C. Please refer to Exhibit A for further details
- 2e.** The software needed to support the prepay metering program is the Meter Data Management (MDM) system supported by Southeastern Data Cooperative (SEDC). SEDC is the service provider for Shelby's billing, accounting, engineering, mapping and other software systems. The total costs for the MDM system is \$21,000.
-

COMMISSION STAFF'S INITIAL REQUEST FOR INFORMATION
DATED MAY 10, 2013

Witness: Mary Elizabeth Purvis

Question:

3. Refer to Exhibit E of the application, Section B, Basis for Fixed Charge Rate Percentages.
- a. Provide a copy of RUS Form 7, referenced in Items B.1, B.2, and B.3, which show the calculation of the depreciation, O & M, and Admin & General fixed charge percentages.
 - b. Provide the actual depreciation rate that Shelby will use to record depreciation for prepay metering equipment.
 - c. Identify the type(s) of meters Shelby currently has in service and the depreciation rate currently in effect.
 - d. Provide financial statements that support the capital structure and interest on long-term debt amounts shown in Item B.4.
 - e. Provide the calculations of the percentages shown under Return on Equity.

Response:

- 3a. Refer to Exhibit B
- 3b. Shelby proposes to use the approved meter depreciation rate of 6.65% which has been the standard rate approved by this commission for AMI equipment.
- 3c. Shelby has two types of residential single-phase meters which are depreciated at the rate of 3.0%:

<u>Manufacturer</u>	<u>Model</u>
Landis and Gyr	Focus AL
General Electric	1-210+

Refer to Exhibit C for details on each model.

COMMISSION STAFF'S INITIAL REQUEST FOR INFORMATION
DATED MAY 10, 2013

Witness: Mary Elizabeth Purvis

- 3d. Refer to Exhibit B.
- 3e. The percentages calculated for the Return on Capital on Section B.4 of Exhibit E of the original filing are as follows:

- Return on Debt:
 - Total 2012 percentages were calculated by finding the ratio of Interest on LTD to Total Debt which equates to 4.23%. Next the percent of debt is of capital structure was multiplied to this ratio to obtain 2.89%.

2012 LTD Interest Costs	\$1,762,335	
Total 2012 Debt	\$41,682,304	
Ratio		4.23%
% Debt is of total Capital Structure	68.30%	
Composite % of return on Debt		2.89%

- Return on Equity:
 - Total 2012 percentages were calculated by finding the ratio of Margins for a 2.0 TIER to Total Equity (Excluding GTCC) which equates to 9.11%. Next the percent of equity is of capital structure was multiplied to this ratio to obtain 2.89%.

2012 LTD Interest Costs	\$1,762,335	
Total 2012 Debt	\$19,344,330	
Ratio		9.11%
% Debt is of total Capital Structure	31.70%	
Composite % of return on Debt		2.89%

COMMISSION STAFF'S INITIAL REQUEST FOR INFORMATION
DATED MAY 10, 2013

Witness: Mary Elizabeth Purvis

Question:

4. Refer to the Purvis Testimony, Item 12. Explain whether Shelby performed a calculation of the costs of the prepay program using the actual cost method similar to the method used by other cooperatives, such as Blue Grass Energy. If yes, provide the results of that calculation.

Response:

- 4a. Exhibit D illustrates the monthly prepay costs for Shelby using Blue Grass Energy's approach. In this exhibit, Shelby is estimating 500 members participating.
-

COMMISSION STAFF'S INITIAL REQUEST FOR INFORMATION
DATED MAY 10, 2013

Witness: Mary Elizabeth Purvis

Question:

5. Refer to the Purvis Testimony, Item 14. Explain whether Shelby considered including a transaction fee. If so, state the amount of the fee considered and describe its calculation. If not, explain whether Shelby is concerned that the cost of transactions will not be recovered from participating members.

Response:

5. A transaction fee was considered, but the SEDC software is unable to support a transaction fee. Shelby considered increasing the Prepay Service Fee to include a transaction fee(s) but made the decision not to do so, because Shelby's approach was to look at the incremental investment only and to provide as low a fee as possible.

Currently, Shelby's members may pay as often and in the amount desired as long as the current bill is paid on or before the due date without incurring any additional fees. Shelby feels those members who select to use the prepay program should be treated in the same manner as other members regarding transaction fees.

COMMISSION STAFF'S INITIAL REQUEST FOR INFORMATION
DATED MAY 10, 2013

Witness: Mary Elizabeth Purvis

Question:

6. Refer to the Purvis Testimony, Item 15. Describe Accounts with Ancillary Services that are not eligible for the proposed Prepay service.

Response:

6. Shelby has no ancillary services at this time and has no current plans for future ancillary services.

COMMISSION STAFF'S INITIAL REQUEST FOR INFORMATION
DATED MAY 10, 2013

Witness: Mary Elizabeth Purvis

Question:

7. Refer to the Purvis Testimony, Item 20. Explain whether disconnections will occur after normal business hours.

Response:

7. Disconnects will not occur after normal business hours. Disconnects will take place during normal business hours only.

COMMISSION STAFF'S INITIAL REQUEST FOR INFORMATION
DATED MAY 10, 2013

Witness: Mary Elizabeth Purvis

Question:

- 8.** Refer to the Purvis Testimony, Item 22. If a member returns to the standard residential tariff from the proposed Prepay service tariff:
- a. Explain whether the remote connect and disconnect collar will be removed from that customer's meter.
 - b. If yes, explain whether there will be a charge to remove the collar.
 - c. Explain whether there will be other charges upon returning to the standard residential tariff from the proposed Prepay service tariff, other than a possible deposit.

Responses:

- 8a.** Yes, the remote connect/disconnect collar would be removed if the collar was installed only for participation in the prepay metering program.
 - 8b.** No, there will be no charge to remove the collar.
 - 8c.** No, there will be no other charges upon returning to the standard residential tariff other than a possible security deposit.
-

COMMISSION STAFF'S INITIAL REQUEST FOR INFORMATION
DATED MAY 10, 2013

Witness: Mary Elizabeth Purvis

Question:

- 9.** Refer to the Purvis Testimony, Item 26.
- a. Shelby states that studies show that prepay metering programs reduce energy consumption up to 12 percent. Provide copies of these studies.
 - b. Explain how the proposed prepay metering program will support Shelby's demand-side management initiatives.
 - c. Provide the estimated amount of cost savings, broken down by each expense category, that Shelby expects to achieve by offering the proposed prepay metering program.

Response:

- 9a.** The referenced studies are the same studies that were contained in Jackson Energy Cooperative Prepay Application Case No. 2010-00210.
- 9b.** The prepay metering program will support Shelby's demand-side management initiatives by providing the consumer a tool to monitor and control energy consumption.
- 9c.** The primary purpose and benefit of the prepay program was to provide an optional service to the members of Shelby to assist those who want or need an alternative to paying a security deposit, provide assistance with monetary/budgetary solutions, offer the ability to monitor and/or manage energy consumption and give those members who desire an additional tool to utilize for conservation efforts. Shelby may see some savings in the

COMMISSION STAFF'S INITIAL REQUEST FOR INFORMATION
DATED MAY 10, 2013

Witness: Mary Elizabeth Purvis

areas mentioned in the testimony but enough is not known at this point to provide an estimate of what, if any, savings might result from the prepay program.

COMMISSION STAFF'S INITIAL REQUEST FOR INFORMATION
DATED MAY 10, 2013

Witness: Mary Elizabeth Purvis

Question:

10. Explain whether a customer served under the proposed Prepay service tariff may request a paper bill.

Response:

10. Yes, the customer may request a paper bill and it will be provided in person at either office, by U.S. mail or by electronic mail as preferred by the member.

COMMISSION STAFF'S INITIAL REQUEST FOR INFORMATION
DATED MAY 10, 2013

Witness: Mary Elizabeth Purvis

Question:

11. State whether the service fee referenced in Item 17 of the proposed Prepay Service tariff is Shelby's late-payment fee. If so, explain whether Shelby would be willing to revise its proposed tariff to include the amount of the fee.

Response:

11. The fee referenced in Item 17 is not Shelby's late fee as there is no late fee for the prepay metering program as provided in Item 8 of the tariff. The fee referenced in Item 17 is the fee charged for an un-honored payment such as a returned check, returned e-check, returned credit card payment, etc. Shelby is willing to revise the proposed tariff to include the fee referenced in Shelby's rules and regulation that is applicable for an un-honored payment.
-

COMMISSION STAFF'S INITIAL REQUEST FOR INFORMATION
DATED MAY 10, 2013

Witness: Mary Elizabeth Purvis

Question:

12. Refer to Exhibit E of the application, Section C, Customer Charge Adder. Provide an analysis of the "Incremental Costs Associated of \$185.10.

Response:

12. The Incremental Cost of \$185.50 is the purchase price, including tax, of the disconnect collar.

TWACS® Disconnect Switch Interbase

Exhibit A
Page 1 of 2



(DSI)

The Disconnect Switch Interbase (DSI) from TWACS® offers a stand-alone, two-way, addressable disconnect switch which provides tamper detection capabilities and paves the way for pre-pay services.

The DSI combines the functionality of a 200 Amp latched relay with the

convenience of the superior TWACS two-way power line communications system.

Stand-alone Design

The stand-alone design offers a plug-in, self-contained solution, which requires no additional connections and is independent of the meter type or technology. All that is required is installation on a TWACS-enabled distribution system.

Whole House Disconnect

Now you can provide for remote whole house disconnect and reconnect with the DSI. The DSI utilizes a dependable and reliable 200 Amp latched relay and combines it with the powerful TWACS system. This combination permits the Customer Service Representative (CSR) to disconnect and reconnect individually metered residential or small commercial, single-phase 200 Amp services remotely from the utility office. The DSI disconnects the electric service to the home while leaving the meter powered for monitoring or communication purposes.

Remote Control - - From Utility Office

No longer is it necessary to create a work order and dispatch a meter technician to remove or "boot" a meter. The CSR or TWACS system operator can simply issue the command for an immediate or scheduled disconnection. Reconnection is equally easy. Each DSI is uniquely addressable based on a secure, factory assigned identity for the highest integrity. Remote communication is provided via the TWACS system which links the utility control center and the meter site. Rapid confirmation of service disconnect or reconnect can be obtained within 20 seconds of command initiation.

Universal Design

The DSI's universal design fits most residential applications. Compatibility is assured with 200 Amp 4-jaw form 2S and 5-jaw form 12S/25S residential sockets. The DSI works with meters both old and new, electromechanical and electronic. The DSI consists of an interbase collar, a 200 Amp latched relay and a TWACS

communication module with an electronic switch controller. The collar has four (or five) jaws that accept the blades from the meter on the topside and four (or five) blades that insert into a standard meter socket on the bottom side.

Utility and Consumer Benefits

Utilities utilizing this product will have at their disposal a powerful revenue collection tool for problem accounts, as well as the ability to enhance customer service by providing a convenience for seasonal and rental customers. Additionally, this improves utility efficiency and personnel safety by allowing connects and disconnects to be performed from the convenience of the utility office. The two-way addressable DSI also paves the way for future pre-pay metering implementations.

Tamper Detection

Tamper Detection is provided through the use of a periodic two-way communications check, load side detector, and diagnostic register. Two-way



Interior of Disconnect Switch Interbase

TWACS® Disconnect Switch Interbase (DSI)

communications confirm that the DSI has not been removed. Load side detection verifies proper operation and will indicate a bypass condition. The diagnostic register generates an alarm flag that is sent to the utility office if tamper is detected.

Switch Status LED and Connect Push-Button

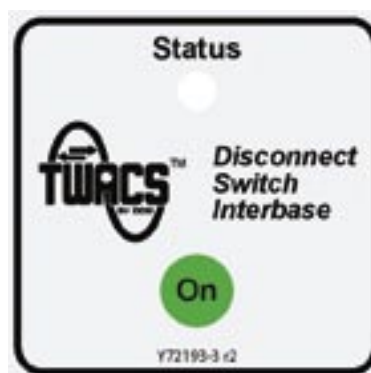
The DSI offers two options to close the switch: a) a direct software command from DCSI's master station software, or b) a two-step process that

allows the consumer to make sure their home is ready for connection. First a software command is issued to arm the switch followed by the consumer manually depressing the "On" Push-Button.

Low Profile

The Low Profile design enhances the universal fit and minimizes any change of appearance to the consumer's service.

Functional Specifications	Value or Range
Line Voltage Frequency	208, 240 VAC +/-15% 60 Hz +/-5%
Temperature Range With Solar Load Without Solar Load Storage Temperature	-40°C to +53°C -40°C to +60°C -40°C to +85°C (18 months max.)
Humidity	0% to 95%, non-condensing
Switch Operations Rated Current Short Circuit Closing Withstand Short Circuit Withstand Overload Peak Overload	200 Amps 10,000 Amps per UL 1008 - 1999 10,000 Amps per UL 508 - 1999 12,000 Amps per ANSI C12.1 - 1995 6 Cycles at 7000 Amps per ANSI C12.1, 1995
Temperature Rise Dielectric	UL 508. 1999 and UL 414 1500 volts at 60Hz for 1 minute per UL 508
Creepage and Clearance Switch Endurance	UL 508 - 1999 30,000 Mechanical Operations 5,000 Full Load Electrical Operations
Standards Compliance EMI/RFI Susceptibility AC Line Surge Electrical Fast Transient EMI/RFI Emissions	ANSI C12.1 Test No.26 ANSI/IEEE C62.41-1991 per ANSI C12.1-2001 Test No.17 IEC 61000 PT4 per ANSI C12.1-2001 Test No.25 CFR 47 Part 15, Subparts A&B per ANSI C12.1-2001 Test No.27
Meter Forms	Class 200 2S, 12S, 25S



The use of the Disconnect Switch Interbase "DSI" permitting remote disconnect/connect may be subject to certain laws, regulations, and/or tariffs at the federal, state and/or local level. Prior to utilizing such a feature, the user is responsible for compliance with all such laws, regulations and/or tariffs. DCSI is held harmless in case of violation of laws, regulations, and tariffs due to the use of the Disconnect Switch Interbase feature of the product.

According to the Paperwork Reduction Act of 1995, an agency may not conduct or sponsor, and a person is not required to respond to, a collection of information unless it displays a valid OMB control number. The valid OMB control number for this information collection is 0572-0032. The time required to complete this information collection is estimated to average 15 hours per response, including the time for reviewing instructions, searching existing data sources, gathering and maintaining the data needed, and completing and reviewing the collection of information.

UNITED STATES DEPARTMENT OF AGRICULTURE
RURAL UTILITIES SERVICE

BORROWER DESIGNATION KY0030

FINANCIAL AND OPERATING REPORT
ELECTRIC DISTRIBUTION

PERIOD ENDED December, 2012

BORROWER NAME Shelby Energy Cooperative, Inc.

INSTRUCTIONS - See help in the online application.

This information is analyzed and used to determine the submitter's financial situation and feasibility for loans and guarantees. You are required by contract and applicable regulations to provide the information. The information provided is subject to the Freedom of Information Act (5 U.S.C. 552)

CERTIFICATION

We recognize that statements contained herein concern a matter within the jurisdiction of an agency of the United States and the making of a false, fictitious or fraudulent statement may render the maker subject to prosecution under Title 18, United States Code Section 1001.

We hereby certify that the entries in this report are in accordance with the accounts and other records of the system and reflect the status of the system to the best of our knowledge and belief.

ALL INSURANCE REQUIRED BY PART 1788 OF 7 CFR CHAPTER XVII, RUS, WAS IN FORCE DURING THE REPORTING PERIOD AND RENEWALS HAVE BEEN OBTAINED FOR ALL POLICIES DURING THE PERIOD COVERED BY THIS REPORT PURSUANT TO PART 1718 OF 7 CFR CHAPTER XVII

(check one of the following)

All of the obligations under the RUS loan documents have been fulfilled in all material respects.

There has been a default in the fulfillment of the obligations under the RUS loan documents. Said default(s) is/are specifically described in Part D of this report.

DATE

PART A. STATEMENT OF OPERATIONS

ITEM	YEAR-TO-DATE			THIS MONTH (d)
	LAST YEAR (a)	THIS YEAR (b)	BUDGET (c)	
1. Operating Revenue and Patronage Capital	41,455,240	42,087,182	44,581,305	4,117,513
Power Production Expense				
2. Cost of Purchased Power	31,570,882	32,333,801	34,045,836	3,121,482
4. Transmission Expense				
5. Regional Market Expense				
6. Distribution Expense - Operation	1,562,550	1,585,252	1,626,264	187,248
7. Distribution Expense - Maintenance	1,920,189	1,950,366	1,835,759	96,162
8. Customer Accounts Expense	691,948	583,660	709,950	36,601
9. Customer Service and Informational Expense	199,827	342,051	220,302	24,348
10. Sales Expense	(19,456)	1,776	(16,814)	1,035
11. Administrative and General Expense	987,029	910,557	1,064,148	(17,222)
12. Total Operation & Maintenance Expense (2 thru 11)	36,912,969	37,707,463	39,485,445	3,449,654
13. Depreciation and Amortization Expense	2,159,641	2,270,691	2,153,764	193,342
14. Tax Expense - Property & Gross Receipts				
15. Tax Expense - Other	36,859	45,024	37,596	4,371
16. Interest on Long-Term Debt	1,838,774	1,762,335	1,763,147	143,212
17. Interest Charged to Construction - Credit				
18. Interest Expense - Other	45,928	84,988	72,419	19,287
19. Other Deductions	2,335	7,568	6,848	74
20. Total Cost of Electric Service (12 thru 19)	40,996,506	41,878,069	43,519,219	3,809,940
21. Patronage Capital & Operating Margins (1 minus 20)	458,734	209,113	1,062,086	307,573
22. Non Operating Margins - Interest	36,382	35,973	36,317	2,662
23. Allowance for Funds Used During Construction				
24. Income (Loss) from Equity Investments	107,944	131,781	(77,000)	131,781
25. Non Operating Margins - Other	(6,677)	10,052	6,962	(29,004)
26. Generation and Transmission Capital Credits	2,161,305	2,015,873		
27. Other Capital Credits and Patronage Dividends	62,460	41,026	(61,499)	10,637
Extraordinary Items				
28. Patronage Capital or Margins (21 thru 28)	2,820,148	2,443,818	966,866	423,649

UNITED STATES DEPARTMENT OF AGRICULTURE RURAL UTILITIES SERVICE FINANCIAL AND OPERATING REPORT ELECTRIC DISTRIBUTION	BORROWER DESIGNATION KY0030
INSTRUCTIONS - See help in the online application.	PERIOD ENDED December, 2012

PART B. DATA ON TRANSMISSION AND DISTRIBUTION PLANT					
ITEM	YEAR-TO-DATE		ITEM	YEAR-TO-DATE	
	LAST YEAR (a)	THIS YEAR (b)		LAST YEAR (a)	THIS YEAR (b)
1. New Services Connected	177	200	5. Miles Transmission	0.00	0.00
2. Services Retired	56	63	6. Miles Distribution - Overhead	1,889.73	1,891.77
3. Total Services in Place	17,183	16,897	7. Miles Distribution - Underground	207.60	211.77
4. Idle Services (Exclude Seasonals)	1,220	1,321	8. Total Miles Energized (5 + 6 + 7)	2,097.33	2,103.54

PART C. BALANCE SHEET			
ASSETS AND OTHER DEBITS		LIABILITIES AND OTHER CREDITS	
1. Total Utility Plant in Service	76,191,434	30. Memberships	0
2. Construction Work in Progress	1,517,877	31. Patronage Capital	28,076,845
3. Total Utility Plant (1 + 2)	77,709,311	32. Operating Margins - Prior Years	149,018
4. Accum. Provision for Depreciation and Amort.	14,146,239	33. Operating Margins - Current Year	2,266,012
5. Net Utility Plant (3 - 4)	63,563,072	34. Non-Operating Margins	740,556
6. Non-Utility Property (Net)	0	35. Other Margins and Equities	1,054,749
7. Investments in Subsidiary Companies	1,193,360	36. Total Margins & Equities (30 thru 35)	32,287,180
8. Invest. in Assoc. Org. - Patronage Capital	13,637,057	37. Long-Term Debt - RUS (Net)	19,157,572
9. Invest. in Assoc. Org. - Other - General Funds	0	38. Long-Term Debt - FFB - RUS Guaranteed	17,067,121
10. Invest. in Assoc. Org. - Other - Nongeneral Funds	697,663	39. Long-Term Debt - Other - RUS Guaranteed	0
11. Investments in Economic Development Projects	229,734	40. Long-Term Debt Other (Net)	5,457,611
12. Other Investments	96,922	41. Long-Term Debt - RUS - Econ. Devel. (Net)	0
Special Funds	0	42. Payments - Unapplied	
14. Total Other Property & Investments (6 thru 13)	15,854,736	43. Total Long-Term Debt (37 thru 41 - 42)	41,682,304
15. Cash - General Funds	1,740,452	44. Obligations Under Capital Leases - Noncurrent	0
16. Cash - Construction Funds - Trustee	0	45. Accumulated Operating Provisions and Asset Retirement Obligations	1,953,695
17. Special Deposits	425	46. Total Other Noncurrent Liabilities (44 + 45)	1,953,695
18. Temporary Investments	0	47. Notes Payable	3,287,316
19. Notes Receivable (Net)	0	48. Accounts Payable	3,369,796
20. Accounts Receivable - Sales of Energy (Net)	3,912,178	49. Consumers Deposits	1,245,575
21. Accounts Receivable - Other (Net)	268,199	50. Current Maturities Long-Term Debt	1,343,276
22. Renewable Energy Credits	0	51. Current Maturities Long-Term Debt - Economic Development	0
23. Materials and Supplies - Electric & Other	415,446	52. Current Maturities Capital Leases	0
24. Prepayments	198,886	53. Other Current and Accrued Liabilities	370,851
25. Other Current and Accrued Assets	9,721	54. Total Current & Accrued Liabilities (47 thru 53)	9,616,814
26. Total Current and Accrued Assets (15 thru 25)	6,545,307	55. Regulatory Liabilities	0
27. Regulatory Assets	266,138	56. Other Deferred Credits	934,547
28. Other Deferred Debits	245,287	57. Total Liabilities and Other Credits (36 + 43 + 46 + 54 thru 56)	86,474,540
29. Total Assets and Other Debits (5+14+26 thru 28)	86,474,540		

<p>UNITED STATES DEPARTMENT OF AGRICULTURE RURAL UTILITIES SERVICE FINANCIAL AND OPERATING REPORT ELECTRIC DISTRIBUTION</p>	<p>BORROWER DESIGNATION KY0030</p>
<p>INSTRUCTIONS - See help in the online application.</p>	<p>PERIOD ENDED December, 2012</p>
<p>PART D. NOTES TO FINANCIAL STATEMENTS</p>	

UNITED STATES DEPARTMENT OF AGRICULTURE RURAL UTILITIES SERVICE FINANCIAL AND OPERATING REPORT ELECTRIC DISTRIBUTION	BORROWER DESIGNATION KY0030
INSTRUCTIONS - See help in the online application.	PERIOD ENDED December, 2012
PART D. CERTIFICATION LOAN DEFAULT NOTES	

UNITED STATES DEPARTMENT OF AGRICULTURE RURAL UTILITIES SERVICE FINANCIAL AND OPERATING REPORT ELECTRIC DISTRIBUTION	BORROWER DESIGNATION KY0030
INSTRUCTIONS - See help in the online application.	PERIOD ENDED December, 2012

PART E. CHANGES IN UTILITY PLANT					
PLANT ITEM	BALANCE BEGINNING OF YEAR (a)	ADDITIONS (b)	RETIREMENTS (c)	ADJUSTMENTS AND TRANSFERS (d)	BALANCE END OF YEAR (e)
1. Distribution Plant	69,239,016	4,713,350	1,404,192		72,548,174
2. General Plant	2,153,881	285,211	100,999	25,000	2,363,093
3. Headquarters Plant	1,274,126	6,041			1,280,167
4. Intangibles	0				0
5. Transmission Plant	0				0
6. Regional Transmission and Market Operation Plant					
7. All Other Utility Plant	0				0
8. Total Utility Plant in Service (1 thru 7)	72,667,023	5,004,602	1,505,191	25,000	76,191,434
9. Construction Work in Progress	2,035,718	(517,841)			1,517,877
10. Total Utility Plant (8 + 9)	74,702,741	4,486,761	1,505,191	25,000	77,709,311

PART F. MATERIALS AND SUPPLIES							
ITEM	BALANCE BEGINNING OF YEAR (a)	PURCHASED (b)	SALVAGED (c)	USED (NET) (d)	SOLD (e)	ADJUSTMENT (f)	BALANCE END OF YEAR (g)
1. Electric	406,896	991,411		935,498	206	(50,670)	411,933
2. Other	3,028	1,296		811			3,513

PART G. SERVICE INTERRUPTIONS					
ITEM	AVERAGE MINUTES PER CONSUMER BY CAUSE				
	POWER SUPPLIER (a)	MAJOR EVENT (b)	PLANNED (c)	ALL OTHER (d)	TOTAL (e)
Present Year	3.620	128.220	14.270	76.640	222.750
Five-Year Average	19.200	916.730	5.880	81.680	1,023.490

PART H. EMPLOYEE-HOUR AND PAYROLL STATISTICS			
1. Number of Full Time Employees	37	4. Payroll - Expensed	1,352,378
2. Employee - Hours Worked - Regular Time	79,710	5. Payroll - Capitalized	936,160
3. Employee - Hours Worked - Overtime	5,666	6. Payroll - Other	185,949

PART I. PATRONAGE CAPITAL			
ITEM	DESCRIPTION	THIS YEAR (a)	CUMULATIVE (b)
1. Capital Credits - Distributions	a. General Retirements	361,993	3,953,371
	b. Special Retirements	80,046	2,656,295
	c. Total Retirements (a + b)	442,039	6,609,666
2. Capital Credits - Received	a. Cash Received From Retirement of Patronage Capital by Suppliers of Electric Power		
	b. Cash Received From Retirement of Patronage Capital by Lenders for Credit Extended to the Electric System	11,769	
	c. Total Cash Received (a + b)	11,769	

PART J. DUE FROM CONSUMERS FOR ELECTRIC SERVICE			
1. Amount Due Over 60 Days	\$	21,652	2. Amount Written Off During Year
			\$ 112,668

UNITED STATES DEPARTMENT OF AGRICULTURE RURAL UTILITIES SERVICE FINANCIAL AND OPERATING REPORT ELECTRIC DISTRIBUTION	BORROWER DESIGNATION KY0030
INSTRUCTIONS - See help in the online application	PERIOD ENDED December, 2012

PART K. kWh PURCHASED AND TOTAL COST

No	ITEM	SUPPLIER CODE	RENEWABLE ENERGY PROGRAM NAME	RENEWABLE FUEL TYPE	kWh PURCHASED	TOTAL COST	AVERAGE COST (Cents/kWh)	INCLUDED IN TOTAL COST - FUEL COST ADJUSTMENT	INCLUDED IN TOTAL COST - WHEELING AND OTHER CHARGES
	(a)	(b)	(c)	(d)	(e)	(f)	(g)	(h)	(i)
1	East Kentucky Power Coop, Inc (KY0059)	5580			467,695,359	32,333,801	6.91	(536,907)	4,696,773
	Total				467,695,359	32,333,801	6.91	(536,907)	4,696,773

UNITED STATES DEPARTMENT OF AGRICULTURE RURAL UTILITIES SERVICE FINANCIAL AND OPERATING REPORT ELECTRIC DISTRIBUTION		BORROWER DESIGNATION KY0030
INSTRUCTIONS - See help in the online application		PERIOD ENDED December, 2012
PART K. kWh PURCHASED AND TOTAL COST		
No	Comments	
1	Part I includes Metering Charge, Wheeling, Enviro Surcharge and Green Power Charge	

UNITED STATES DEPARTMENT OF AGRICULTURE RURAL UTILITIES SERVICE FINANCIAL AND OPERATING REPORT ELECTRIC DISTRIBUTION		BORROWER DESIGNATION KY0030	
INSTRUCTIONS - See help in the online application.		PERIOD ENDED December, 2012	
PART L. LONG-TERM LEASES			
No	NAME OF LESSOR (a)	TYPE OF PROPERTY (b)	RENTAL THIS YEAR (c)
TOTAL			

UNITED STATES DEPARTMENT OF AGRICULTURE RURAL UTILITIES SERVICE FINANCIAL AND OPERATING REPORT ELECTRIC DISTRIBUTION		BORROWER DESIGNATION KY0030	
INSTRUCTIONS - See help in the online application.		PERIOD ENDED December, 2012	
PART M. ANNUAL MEETING AND BOARD DATA			
1. Date of Last Annual Meeting 6/22/2012	2. Total Number of Members 12,153	3. Number of Members Present at Meeting 200	4. Was Quorum Present? Y
5. Number of Members Voting by Proxy or Mail 947	6. Total Number of Board Members 6	7. Total Amount of Fees and Expenses for Board Members \$ 120,117	8. Does Manager Have Written Contract? N

RUS Financial and Operating Report Electric Distribution

Revision Date 2010

UNITED STATES DEPARTMENT OF AGRICULTURE RURAL UTILITIES SERVICE FINANCIAL AND OPERATING REPORT ELECTRIC DISTRIBUTION		BORROWER DESIGNATION KY0030			
INSTRUCTIONS - See help in the online application.		PERIOD ENDED December, 2012			
PART N. LONG-TERM DEBT AND DEBT SERVICE REQUIREMENTS					
No	ITEM	BALANCE END OF YEAR (a)	INTEREST (Billed This Year) (b)	PRINCIPAL (Billed This Year) (c)	TOTAL (Billed This Year) (d)
1	Rural Utilities Service (Excludes RUS - Economic Development Loans)	19,157,572	792,540	468,475	1,261,015
2	National Rural Utilities Cooperative Finance Corporation	5,457,611	317,908	483,063	800,971
3	CoBank, ACB				
4	Federal Financing Bank	17,067,121	172,309	92,443	264,752
5	RUS - Economic Development Loans				
6	Payments Unapplied	0			
	TOTAL	41,682,304	1,282,757	1,043,981	2,326,738

UNITED STATES DEPARTMENT OF AGRICULTURE RURAL UTILITIES SERVICE		BORROWER DESIGNATION KY0030		
FINANCIAL AND OPERATING REPORT ELECTRIC DISTRIBUTION		PERIOD ENDED December, 2012		
INSTRUCTIONS - See help in the online application.				
PART O. POWER REQUIREMENTS DATABASE - ANNUAL SUMMARY				
CLASSIFICATION	CONSUMER SALES & REVENUE DATA	DECEMBER (a)	AVERAGE NO. CONSUMERS SERVED (b)	TOTAL YEAR TO DATE (c)
1. Residential Sales (excluding seasonal)	a. No. Consumers Served	14,929	14,903	
	b. kWh Sold			220,786,466
	c. Revenue			23,937,841
2. Residential Sales - Seasonal	a. No. Consumers Served	47	67	
	b. kWh Sold			226,610
	c. Revenue			32,422
3. Irrigation Sales	a. No. Consumers Served			
	b. kWh Sold			
	c. Revenue			
4. Comm. and Ind. 1000 KVA or Less	a. No. Consumers Served	356	350	
	b. kWh Sold			66,784,639
	c. Revenue			5,959,442
5. Comm. and Ind. Over 1000 KVA	a. No. Consumers Served	8	8	
	b. kWh Sold			162,323,813
	c. Revenue			11,383,414
6. Public Street & Highway Lighting	a. No. Consumers Served	32	32	
	b. kWh Sold			252,085
	c. Revenue			48,429
7. Other Sales to Public Authorities	a. No. Consumers Served			
	b. kWh Sold			
	c. Revenue			
8. Sales for Resale - RUS Borrowers	a. No. Consumers Served			
	b. kWh Sold			
	c. Revenue			
9. Sales for Resale - Other	a. No. Consumers Served			
	b. kWh Sold			
	c. Revenue			
10. Total No. of Consumers (lines 1a thru 9a)		15,372	15,360	
11. Total kWh Sold (lines 1b thru 9b)				450,373,613
12. Total Revenue Received From Sales of Electric Energy (lines 1c thru 9c)				41,361,548
13. Transmission Revenue				0
14. Other Electric Revenue				725,634
15. kWh - Own Use				0
16. Total kWh Purchased				467,695,359
17. Total kWh Generated				0
18. Cost of Purchases and Generation				32,333,801
19. Interchange - kWh - Net				
20. Peak - Sum All kW Input (Metered) Non-coincident <input type="checkbox"/> Coincident <input checked="" type="checkbox"/>				92,661

UNITED STATES DEPARTMENT OF AGRICULTURE RURAL UTILITIES SERVICE FINANCIAL AND OPERATING REPORT ELECTRIC DISTRIBUTION	BORROWER DESIGNATION KY0030
INSTRUCTIONS - See help in the online application.	PERIOD ENDED December, 2012

PART P. ENERGY EFFICIENCY PROGRAMS						
CLASSIFICATION	ADDED THIS YEAR			TOTAL TO DATE		
	No. of Consumers (a)	Amount Invested (b)	Estimated MMBTU Savings (c)	No. of Consumers (d)	Amount Invested (e)	Estimated MMBTU Savings (f)
1. Residential Sales (excluding seasonal)	703	2,407	499	5,179	29,222	2,989
2. Residential Sales - Seasonal						
3. Irrigation Sales						
4. Comm. and Ind. 1000 KVA or Less				4		1,092
5. Comm. and Ind. Over 1000 KVA				1		375
6. Public Street and Highway Lighting						
7. Other Sales to Public Authorities						
8. Sales for Resale - RUS Borrowers						
9. Sales for Resale - Other						
10. Total	703	2,407	499	5,184	29,222	4,456

RUS Financial and Operating Report Electric Distribution

Revision Date 2010

UNITED STATES DEPARTMENT OF AGRICULTURE RURAL UTILITIES SERVICE	BORROWER DESIGNATION KY0030
FINANCIAL AND OPERATING REPORT ELECTRIC DISTRIBUTION INVESTMENTS, LOAN GUARANTEES AND LOANS	PERIOD ENDED December, 2012

INSTRUCTIONS - Reporting of investments is required by 7 CFR 1717, Subpart N. Investment categories reported on this Part correspond to Balance Sheet items in Part C. Identify all investments in Rural Development with an 'X' in column (e). Both 'Included' and 'Excluded' Investments must be reported. See help in the online application.

PART Q. SECTION I. INVESTMENTS (See Instructions for definitions of Income or Loss)

No	DESCRIPTION (a)	INCLUDED (\$) (b)	EXCLUDED (\$) (c)	INCOME OR LOSS (\$) (d)	RURAL DEVELOPMENT (e)
2	Investments in Associated Organizations				
	EKP PATRONAGE CAPITAL		12,942,850		
	KAEC PATRONAGE CAPITAL	39,631			
	CFC CAPITAL TERM CERTIFICATES		642,963		
	CFC MEMBERSHIP	1,000			
	CRC MEMBERSHIP	2,500			
	EKP MEMBERSHIP		100		
	KAEC DETOXIFICATION CERTIFICATE	5,000			
	SEDC MEMBERSHIP	100			
	NTRC MEMBERSHIP	1,000			
	ENVISION ENERGY SERVICES	25,000			
	CRC EQUITY INVESTMENT	20,000			
	UUS PATRONAGE CAPITAL	361,707			
	CFC PATRONAGE CAPITAL		196,457		
	CRC PATRONAGE CAPITAL	5,828			
	NISC PATRONAGE CAPITAL	33,027			
	SEDC PATRONAGE CAPITAL	57,557			
	SHELBY ENERGY SERVICES CORP.	1,193,360			
	Totals	1,745,710	13,782,370		
3	Investments in Economic Development Projects				
	LAKE CUMBERLAND AREA DEVELOPMENT AND LITTLE KY RIVER WATERSHED	229,734			X
	Totals	229,734			
4	Other Investments				
	SOUTHERN STATES	1,000			
	FEDERATED RURAL ELECTRIC	70,912			
	TIME WARNER	10			
	CFC MEMBER CAPITAL SECURITIES	25,000			
	Totals	96,922			
6	Cash - General				
	CITIZENS UNION BANK - GENERAL FUNDS	1,229,260			
	CITIZENS UNION BANK - ECONOMIC DEV.		386,693		X
	BEDFORD LOAN AND DEPOSIT	98,205			
	CITIZENS UNION BANK - CAPITAL CR REFUNDS	7,240			
	UNITED CITIZENS - HENRY COUNTY	8,439			
	FARMERS BANK - MILTON	5,563			
	WORKING FUND - PERMANENT	5,050			
	Totals	1,353,757	386,693		
7	Special Deposits				
	BEDFORD OFFICE	425			
	Totals	425			
9	Accounts and Notes Receivable - NET				
	A T & T AND CROWN COMMUNICATIONS	(18,539)			
	ASSISTANCE VOUCHERS	2,131			
	MISC	(3,422)			
	SHELBY ENERGY SERVICES	2,399			
	FEMA	89,280			

UNITED STATES DEPARTMENT OF AGRICULTURE RURAL UTILITIES SERVICE		BORROWER DESIGNATION KY0030	
FINANCIAL AND OPERATING REPORT ELECTRIC DISTRIBUTION INVESTMENTS, LOAN GUARANTEES AND LOANS		PERIOD ENDED December, 2012	
INSTRUCTIONS - Reporting of investments is required by 7 CFR 1717, Subpart N. Investment categories reported on this Part correspond to Balance Sheet items in Part C. Identify all investments in Rural Development with an 'X' in column (e). Both 'Included' and 'Excluded' Investments must be reported. See help in the online application.			
PART Q. SECTION I. INVESTMENTS (See Instructions for definitions of Income or Loss)			
	CONSUMER BILL CONTRACTS	176,275	
	OTHER GROUP INS AND 401K	20,075	
	Totals	268,199	
11	TOTAL INVESTMENTS (1 thru 10)	3,694,747	14,169,063

UNITED STATES DEPARTMENT OF AGRICULTURE RURAL UTILITIES SERVICE FINANCIAL AND OPERATING REPORT ELECTRIC DISTRIBUTION INVESTMENTS, LOAN GUARANTEES AND LOANS	BORROWER DESIGNATION KY0030 PERIOD ENDED December, 2012
---	--

INSTRUCTIONS - Reporting of investments is required by 7 CFR 1717, Subpart N. Investment categories reported on this Part correspond to Balance Sheet items in Part C. Identify all investments in Rural Development with an 'X' in column (e). Both 'Included' and 'Excluded' Investments must be reported. See help in the online application.

PART Q, SECTION II. LOAN GUARANTEES					
No	ORGANIZATION (a)	MATURITY DATE (b)	ORIGINAL AMOUNT (\$) (c)	LOAN BALANCE (\$) (d)	RURAL DEVELOPMENT (e)
	TOTAL				
	TOTAL (Included Loan Guarantees Only)				

UNITED STATES DEPARTMENT OF AGRICULTURE RURAL UTILITIES SERVICE		BORROWER DESIGNATION KY0030			
FINANCIAL AND OPERATING REPORT ELECTRIC DISTRIBUTION INVESTMENTS, LOAN GUARANTEES AND LOANS		PERIOD ENDED December, 2012			
INSTRUCTIONS - Reporting of investments is required by 7 CFR 1717, Subpart N. Investment categories reported on this Part correspond to Balance Sheet items in Part C. Identify all investments in Rural Development with an 'X' in column (e). Both 'Included' and 'Excluded' Investments must be reported. See help in the online application.					
SECTION III. RATIO					
RATIO OF INVESTMENTS AND LOAN GUARANTEES TO UTILITY PLANT [Total of Included Investments (Section I, 11b) and Loan Guarantees - Loan Balance (Section II, 5d) to Total Utility Plant (Line 3, Part C) of this report]					4.76 %
SECTION IV. LOANS					
No	ORGANIZATION (a)	MATURITY DATE (b)	ORIGINAL AMOUNT (\$) (c)	LOAN BALANCE (\$) (d)	RURAL DEVELOPMENT (e)
TOTAL					

E130 FOCUS^{AL}

Leading-Edge Technology for Advanced Residential Metering Applications

The FOCUS[®] family of metering products provides the utility industry with an advanced, reliable and economical solid-state meter platform for advanced metering applications. The FOCUS AL was designed to be a low cost, active energy kWh-only meter. Utilizing a single circuit board design, the FOCUS AL allows room for installation of a modular communications board or a KYZ option output board. Fewer parts and connectors through the design increase reliability and contribute to better overall endpoint performance. Highly accurate load performance and the use of field-proven Digital Multiplication Measurement Technique ensure reliability and dependability during the entire life of the meter. The FOCUS AL technology includes measurement circuit, microprocessor, non-volatile memory, selectable metrics, flexible display functionality, factory programming option and is designed for a 20+ year life.

Meter reconfiguration can be accomplished optically through the configuration port located on the front cover.

- Select from displayable positive, negative, net and added (security) metrics
- Change the displayed information, order or digits
- Configure a CT/PT meter multiplier to obtain a direct reading
- Preset or reset kWh
- Adjust calibration



Key Benefits

- Digital Multiplication Measurement Technique
- Non-volatile memory
- Designed for a 20+ year life
- Meets or exceeds industry and ANSI standards
- Uses ANSI protocol (between meter and AMR device)
- 6 digit LCD and 2 Alpha ID
- Selectable meter multiplier up to 240 (1200:5 CT)

Landis
Gyr+
manage energy better

Product Specification and Schedule Sheet

Specifications

General Specifications	Active Energy “kWh-only” meter
	Digital Multiplication Measurement Technique
	Non-Volatile Memory
	Designed for 20+ years life
	Meets ANSI standards for performance
	Utilizes ANSI protocol (between meter and AMI device)
	8-Digit LCD
	Display scroll sequence programmable (factory or end user)
	Configuration Port – cover does not have to be removed
Operating Temperature	-40C to +85C under cover
Operating Voltage	80% to 115% of Vn
Frequency	60Hz +/- 5%
Humidity	5% to 95% relative humidity, non condensing
Voltage Burden	≤ 1.8W Max
Load Performance Accuracy	Accuracy Class 0.5% – typical accuracy 0.2%
Display Options	Energy Metrics: +kWh, -kWh, Net kWh, and added kWh (Security)
	Metric Energy Display Format – 4x1, 4x10, 5x1, 5x10, 6x1 or 6x10
AMI Platform	Modular or Integrated
Selectable Meter Multiplier	Up to 240 as result of PT ratio • CT ratio
Applicable Standards	ANSI C12.1 for electric meters
	ANSI C12.10 for physical aspects of watt hour meters
	ANSI C12.19 Utility Industry End Device Data Tables
	ANSI C12.20 for electricity meters, 0.2 and 0.5 accuracy classes
	CAN3-C17-M84 Canadian specifications for approval of type of electricity meters
Landis+Gyr Communication	2 Way Gridstream RF
	2 Way Gridstream PLC
	1 Way PLC
	1 Way Fixed network RF
	1 Way Airpoint RF Drive-By
Third Party Communication	Aclara STAR Network – RF
	Aclara TWACS Technology – PLC
	Trilliant 2 Way SecureMesh

The kWh FOCUS meter is available in the following forms:

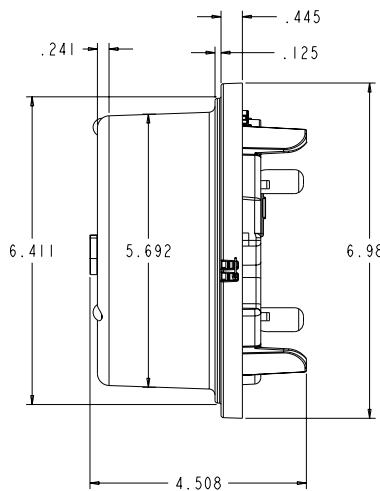
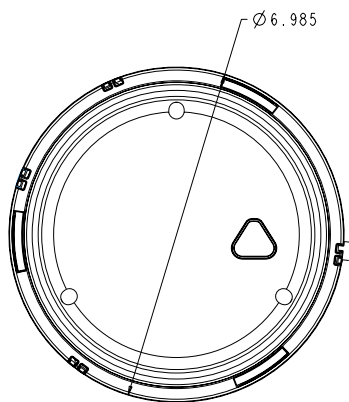
Form	Nominal Voltage	Current Class	Test Amps	Starting Load	Kh
1S	120V	CL 100	15.0	0.030 Amp (3.6W)	1.8
2S	240V	CL 200	30.0 / 50.0	0.050 Amp (12W)	7.2
2SE	240V	CL 320	30.0 / 50.0	0.080 Amp (19.2W)	12.0
2K	240V	CL 480	30.0 / 50.0	0.120 Amp (28.8W)	14.4
3S	120V	CL 10/20	2.5	0.005 Amp (0.6W)	0.3
3S	240V	CL 10/20	2.5	0.005 Amp (0.6W)	0.6
4S	240V	CL 10/20	2.5	0.005 Amp (0.6W)	0.6
25S	120V	CL 200	30.0	0.050 Amp (12W)	14.4
12S	120V	CL 200	30/50	0.050 Amp (12W)	14.4

Form	Net Lbs.	Single Pack Weight	Single Pack Dimensions	Four Pack Weight	Four Pack Dimensions	Pallet Weight	Pallet Dimensions
1S	2	3 lbs.	8 3/4" x 8 3/4" x 7"	9 lbs.	15 1/2" x 7" x 15 1/2"	190 lbs.	31" x 46" x 31"
2S	2	3 lbs.	8 3/4" x 8 3/4" x 7"	10 lbs.	15 1/2" x 7" x 15 1/2"	190 lbs.	31" x 46" x 31"
2SE	2	3 lbs.	8 3/4" x 8 3/4" x 7"	10 lbs.	15 1/2" x 7" x 15 1/2"	190 lbs.	31" x 46" x 31"
3S	2	3 lbs.	8 3/4" x 8 3/4" x 7"	9 lbs.	15 1/2" x 7" x 15 1/2"	190 lbs.	31" x 46" x 31"
4S	2	3 lbs.	8 3/4" x 8 3/4" x 7"	10 lbs.	15 1/2" x 7" x 15 1/2"	190 lbs.	31" x 46" x 31"
12S	2	3 lbs.	8 3/4" x 8 3/4" x 7"	10 lbs.	15 1/2" x 7" x 15 1/2"	190 lbs.	31" x 46" x 31"
25S	2	3 lbs.	8 3/4" x 8 3/4" x 7"	10 lbs.	15 1/2" x 7" x 15 1/2"	190 lbs.	31" x 46" x 31"
2K	4 1/2	6 lbs.	12 1/2" x 12 1/2" x 9"	N/A	N/A	195 lbs.*	31" x 46" x 43"

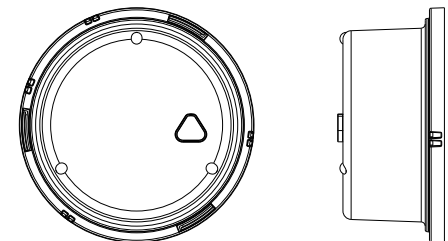
Standard pallet size of 96 meters

* Denotes alternate pallet size of 30 meters

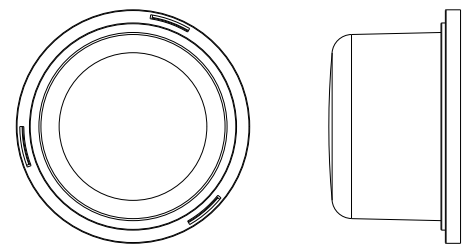
FOCUS AL S-Base



Cover Options

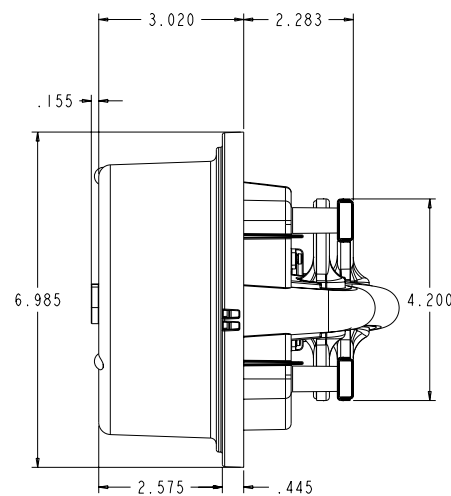
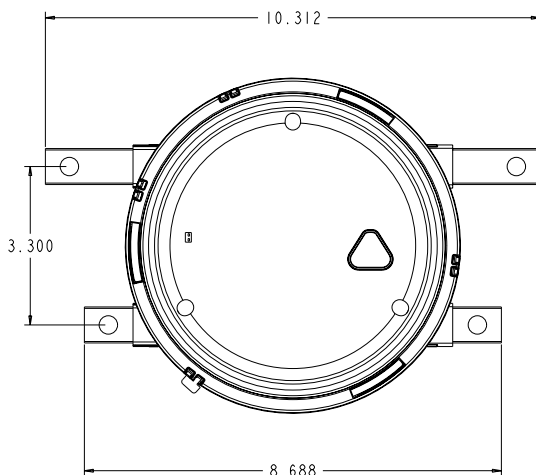


FOCUS AL Short Cover



FOCUS AL Tall Cover

FOCUS AL K-Base



I-210+ Product Information

The I-210+, GE Energy's latest singlephase basic energy meter, is designed to offer utilities high quality, solid-state measurement performance, affordability, accuracy and reliability. The I-210+ measures energy, and with the addition of a softswitch, is compatible with a suite of third-party AMR solutions. The I-210+ comes with the option of an integrated, factory installed remote disconnect switch to help utilities more efficiently address issues such as non-payments and move-in, move-outs. The meter is also offered in network forms (I-210+n) allowing utilities to more cost-effectively meter network services.

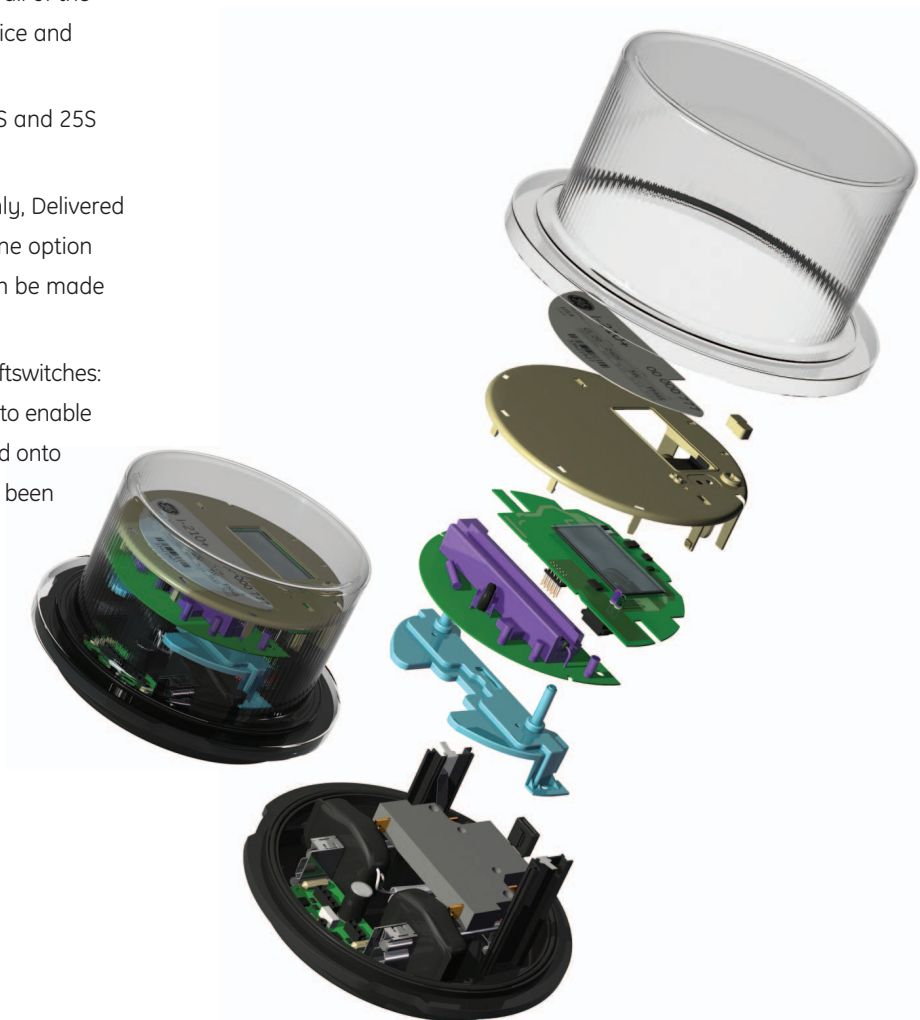
Key Product Highlights:

- Remote disconnect: The disconnect switch is fully integrated inside the I-210+. This is a factory installed option that must be specified at the time of order. To take advantage of all of the functionality this option offers, a two-way AMR device and system should be employed.
- Network Applications: The I-210+ is available in 12S and 25S forms for network applications.
- Four options for Energy Accumulation (Delivered only, Delivered + Received, Delivered—Received, Received only); one option must be specified at time of order, but changes can be made after the fact via GE's MeterMate® software.
- Additional functionality and flexibility provided by softswitches: The softswitch, which is a software application used to enable the meter with additional functionality, can be loaded onto the meter at the time of order or after the meter has been put in service to add functionality to the meter.

- IEEE® Reliability Data— This is an option that can be added via the V2 softswitch and allows the utility to directly measure and monitor quality of service provided to the customer.
- Incorporates a patented firmware algorithm to detect tamper-by-meter inversion (turning the meter upside down). This is more reliable than using mechanical devices.

I-210+ Available Softswitches:

- **O:** AMR communications (AMR interface formats include quadrature pulse, PSEM, SPI Format-1 data, SPI Format-2 data)
- **S₂:** Displayable AMR calculated Demand Value shown on the three lower LCD digits
- **V₂:** Simple Voltage Event monitor in addition to a display of RMS momentary voltage on the three lower LCD digits



fact sheet

Robust MeterMate reading and programming software to support all functionality; some advanced features include:

- Change factory program defaults, including measurement detents
- Set or change sag and swell thresholds
- Perform a master reset to clear energy values, voltage event and power fail counters
- Obtain a meter program and data summary report
- Upgrade and downgrade AMR and voltage event monitoring capability
- Ability to set AMR communication type to (1) PSEM, (2) SPI Format 1 data, (3) SPI Format 2 Data or (4) Quad Pulse Data Output

Meter specifications and related information

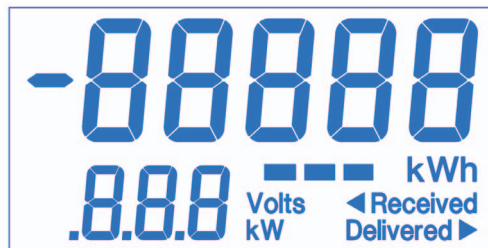
I210+ Meter ANSI® forms:

Form	Class	Volts
1S	100	120 & 240
2S	200 & 320	240
3S & 3CS	20	120 & 240
4S	20	240
12S	200 & 320	120 & 240
25S	200 & 320	120 & 240

I-210+ (Basic Energy): only one standard Polycarbonate cover is needed for units with or without AMR communications.

I-210+ Display

Performance meets or exceeds ANSI C12.1, C12.10, C12.20, C37.90.1



Operating Range:

- Voltage: +/- 20% (or ±20%)
- Temperature: -40°C through +85°C
- Typical Starting Watts: ≤5.0 Watts (Form 2S 240V CL200)
- Typical Watts Loss: 0.7 Watts
- Typical Accuracy: Within +/- 0.2%



For more information, contact us via e-mail at energy.tdsolutions@ge.com or visit our web site at ge.com/energy.

* trademarks of General Electric Company
IEEE is a registered trademark of the Institute of Electrical Electronics Engineers, Inc.
ANSI is a registered trademark of American National Standards Institute, Incorporated.
© 2007 General Electric Company. All rights reserved.

PREPAY TARIFF AND PROGRAM

PREPAY COSTS ANALYSIS

Monthly Charge

Equipment Costs:

		<u>Per Member</u>
1. Software for program (*)		
MDM	\$21,000	\$42.00
2. Hardware		
disconnect Collars		\$185.50

Installation Cost:

3. CSR set up per member:		
labor 15 min.	19.62	\$4.91
OH	0.40	\$1.96
4. Serviceman meter change per member:		
Labor 30 min.	30.3	\$15.15
Oh	0.40	<u>\$6.06</u>
5. Investment per Member		<u><u>\$255.58</u></u>

Annual Expenses based on 15 year life

1. Depreciation		\$17.04
2. Interest 4.8%		\$12.27
3. O & M		
Software - 20%		\$8.40
Hardware - 10%		<u>\$18.55</u>
4. Annual Expenses		\$56.26
5. Monthly Expense per member		\$4.69
6. Monthly software support	\$310	\$0.62
7. Communication Fees	4 notices	\$0.30
8. Transaction Fees	1.25 ea	<u>\$3.75</u>
8. Monthly Expense per Member		<u><u>\$9.36</u></u>

*Based on 500 participants