

COMMONWEALTH OF KENTUCKY
BEFORE THE PUBLIC SERVICE COMMISSION

REDACTED COPY

In the Matter of:

AN INVESTIGATION INTO THE)	ADMINISTRATIVE
INTRASTATE SWITCHED ACCESS RATES)	CASE NO.
OF ALL KENTUCKY INCUMBENT AND)	2010-00398
COMPETITIVE LOCAL EXCHANGE)	
CARRIERS)	

**RLECS' AMOUNT OF ACCESS REVENUE SHIFT IF INTRASTATE SWITCHED
ACCESS RATES MIRROR INTERSTATE SWITCHED ACCESS RATES**

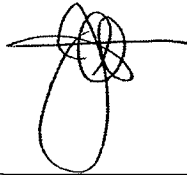
Pursuant to the March 10, 2011 Order of the Kentucky Public Service Commission in the above-captioned case, the RLECs¹ hereby file a copy of the amount of access revenue shift they will experience if their intrastate switched access rates mirror their interstate switched access rates. The spreadsheets containing this information are attached hereto as follows:

- **Exhibit 1:** RLECs' Combined Expected Revenue Shift
- **Exhibit 2:** Ballard Rural Telephone Cooperative Corporation, Inc.'s Expected Revenue Shift
- **Exhibit 3:** Brandenburg Telephone Company's Expected Revenue Shift
- **Exhibit 4:** Duo County Telephone Cooperative Corporation, Inc.'s Expected Revenue Shift
- **Exhibit 5:** Foothills Rural Telephone Cooperative, Inc.'s Expected Revenue Shift
- **Exhibit 6:** Gearhart Communications Company, Inc.'s Expected Revenue Shift
- **Exhibit 7:** Highland Telephone Cooperative, Inc.'s Expected Revenue Shift
- **Exhibit 8:** Logan Telephone Cooperative, Inc.'s Expected Revenue Shift

¹ Ballard Rural Telephone Cooperative Corporation, Inc., Brandenburg Telephone Company, Duo County Telephone Cooperative Corporation, Inc., Foothills Rural Telephone Cooperative, Inc., Gearhart Communications Co., Inc., Highland Telephone Cooperative, Inc., Logan Telephone Cooperative, Inc., Mountain Rural Telephone Cooperative, Inc., North Central Telephone Cooperative Corporation, Peoples Rural Telephone Cooperative, Inc., South Central Rural Telephone Cooperative Corporation, Inc., Thacker-Grigsby Telephone Company, Inc., and West Kentucky Rural Telephone Cooperative Corporation, Inc. (collectively the "RLECs").

- **Exhibit 9:** Mountain Rural Telephone Cooperative, Inc.'s Expected Revenue Shift
- **Exhibit 10:** North Central Telephone Cooperative Corporation's Expected Revenue Shift
- **Exhibit 11:** Peoples Rural Telephone Cooperative, Inc.'s Expected Revenue Shift
- **Exhibit 12:** South Central Rural Telephone Cooperative Corporation, Inc.'s Expected Revenue Shift
- **Exhibit 13:** Thacker-Grigsby Telephone Company, Inc.'s Expected Revenue Shift
- **Exhibit 14:** West Kentucky Rural Telephone Cooperative Corporation, Inc.'s Expected Revenue Shift

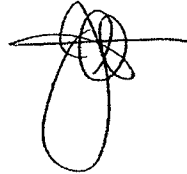
Respectfully submitted,



John E. Selent
Edward T. Depp
Stephen D. Thompson
DINSMORE & SHOHL LLP
1400 PNC Plaza
500 West Jefferson Street
Louisville, Kentucky 40202
(502) 540-2300 (Telephone)
(502) 585-2207 (Facsimile)
Counsel to the RLECs

CERTIFICATE OF SERVICE

In accordance with Ordering Paragraph No. 5 of the Commission's March 10, 2011 Order, this is to certify that the RLECs' April 15, 2011 electronic filing is a true and accurate copy of the documents to be filed in paper medium; that the electronic filing has been transmitted to the Commission on April 15, 2011; that an original and one copy of the filing will be delivered to the Commission on April 15, 2011; and that, on April 15, 2011, electronic mail notification of the electronic filing will be provided through the Commission's electronic filing system.

A handwritten signature consisting of several overlapping loops and a horizontal line extending to the right.

Counsel to the RLECs

EXHIBIT 1
RLECs' COMBINED EXPECTED REVENUE SHIFT

ITG Response to PSC Ky. Adm. Case No. 2010-00398

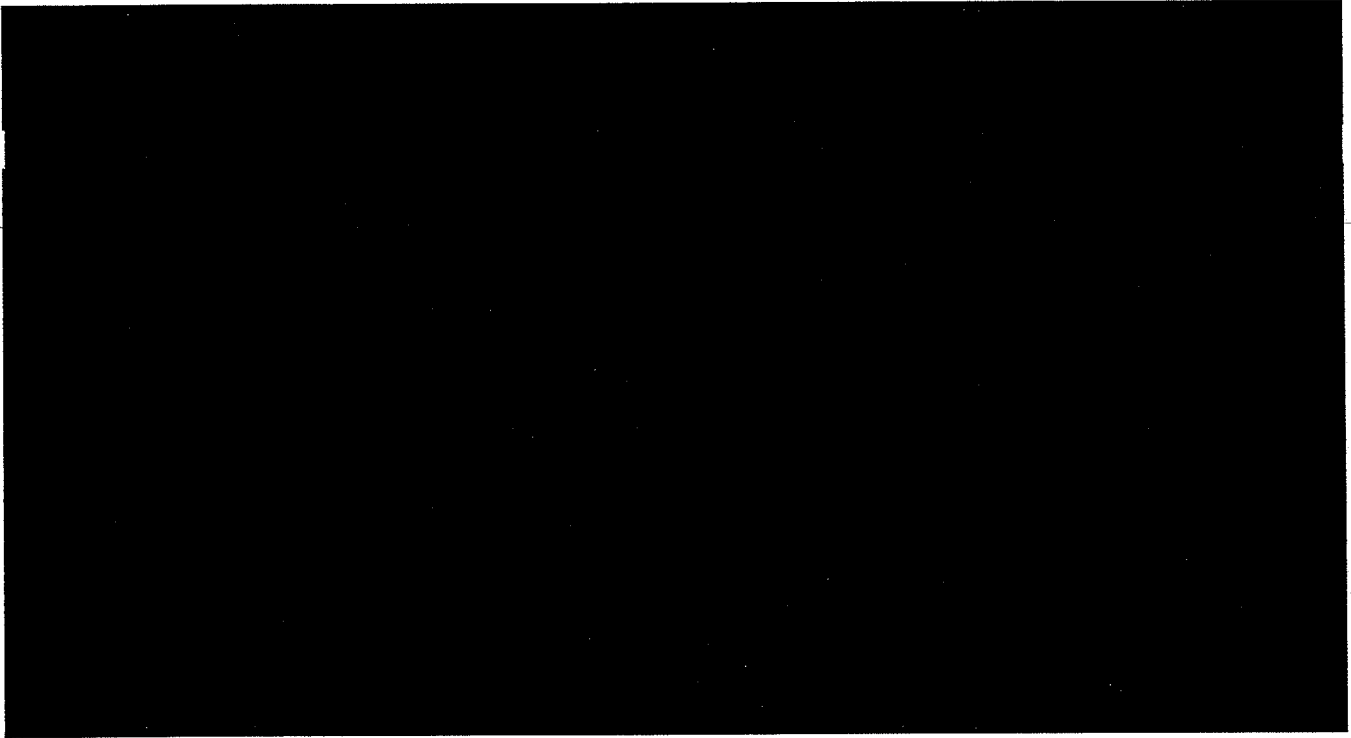


EXHIBIT 2
BALLARD RURAL TELEPHONE COOPERATIVE CORPORATION, INC.'S
EXPECTED REVENUE SHIFT

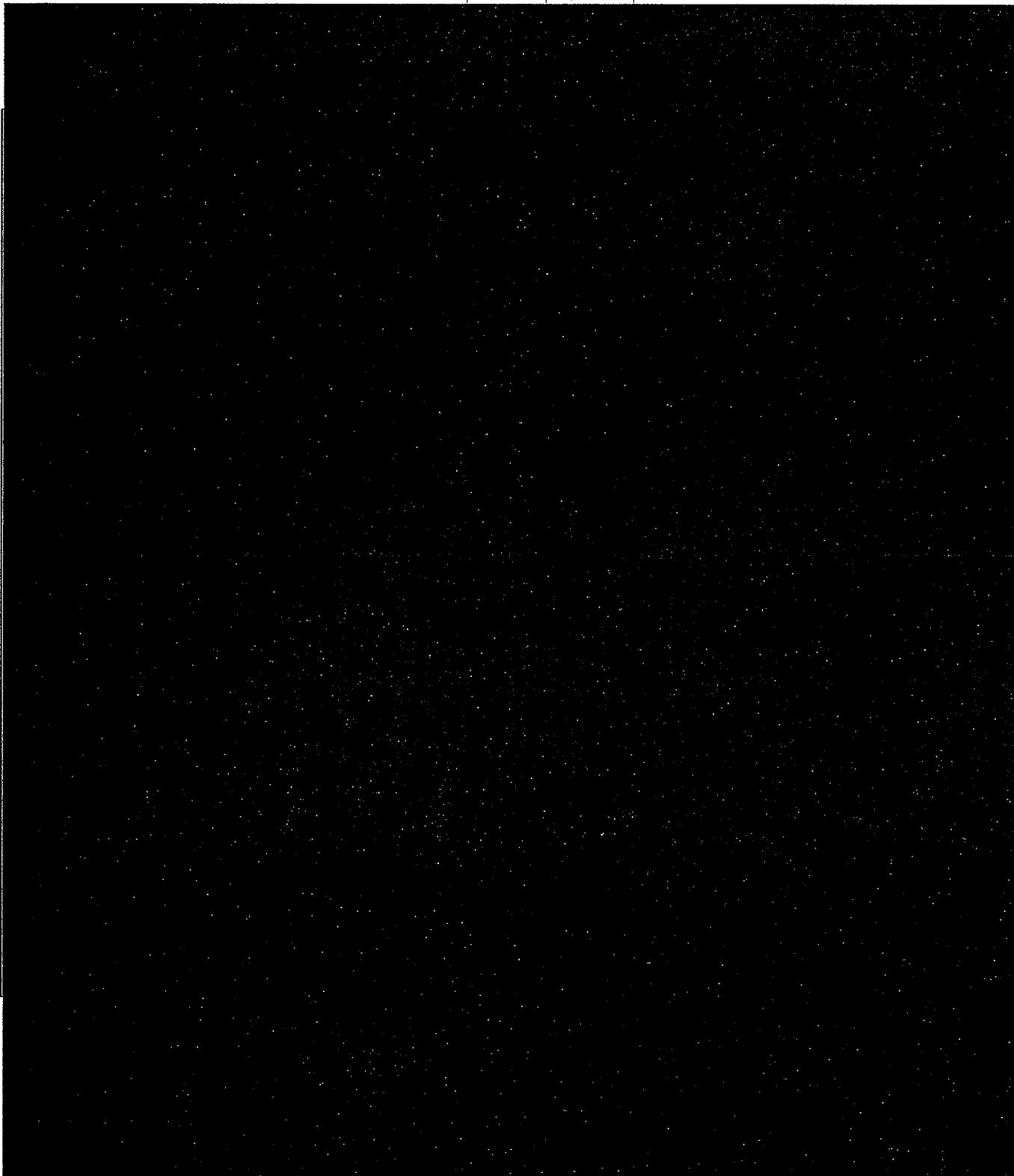
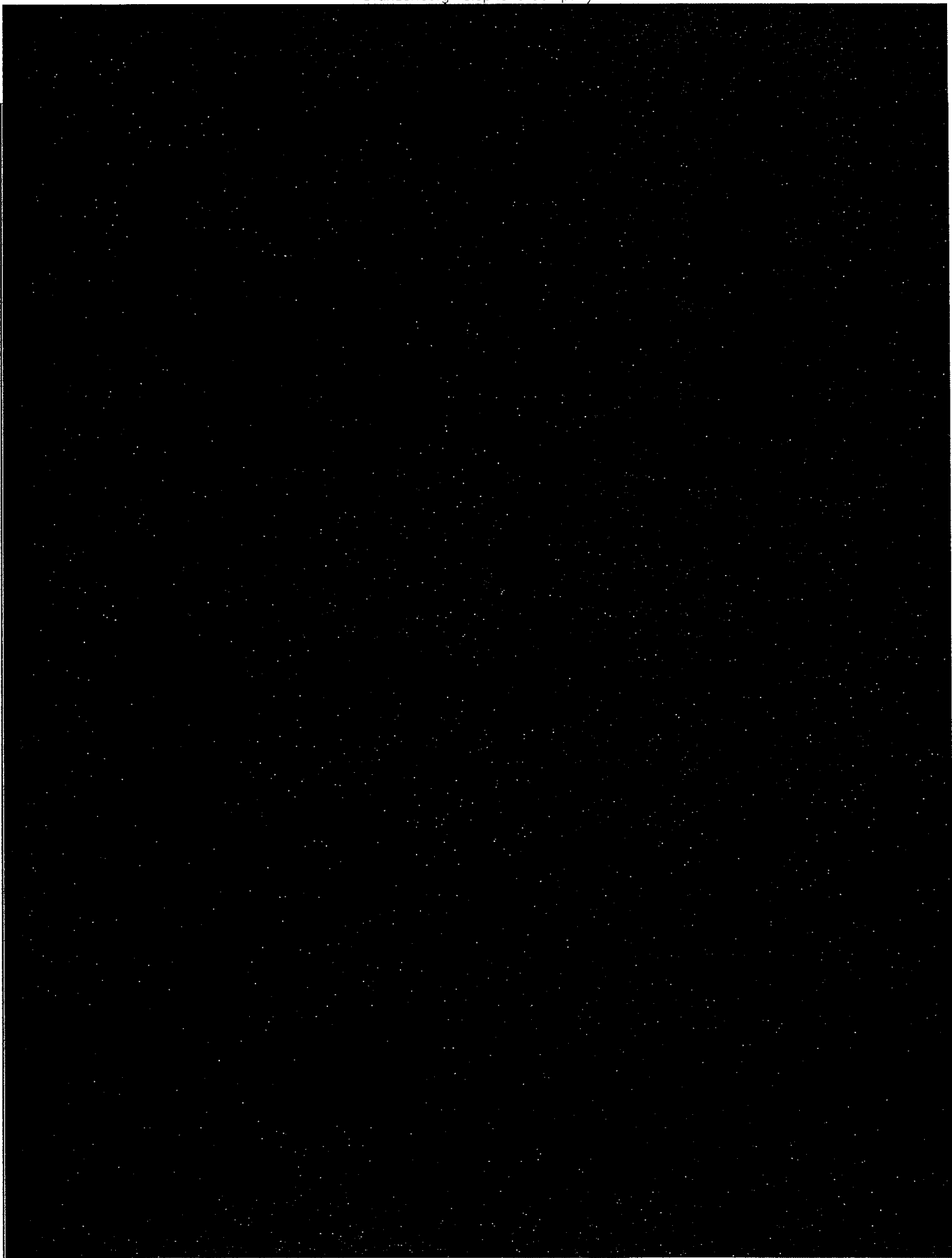
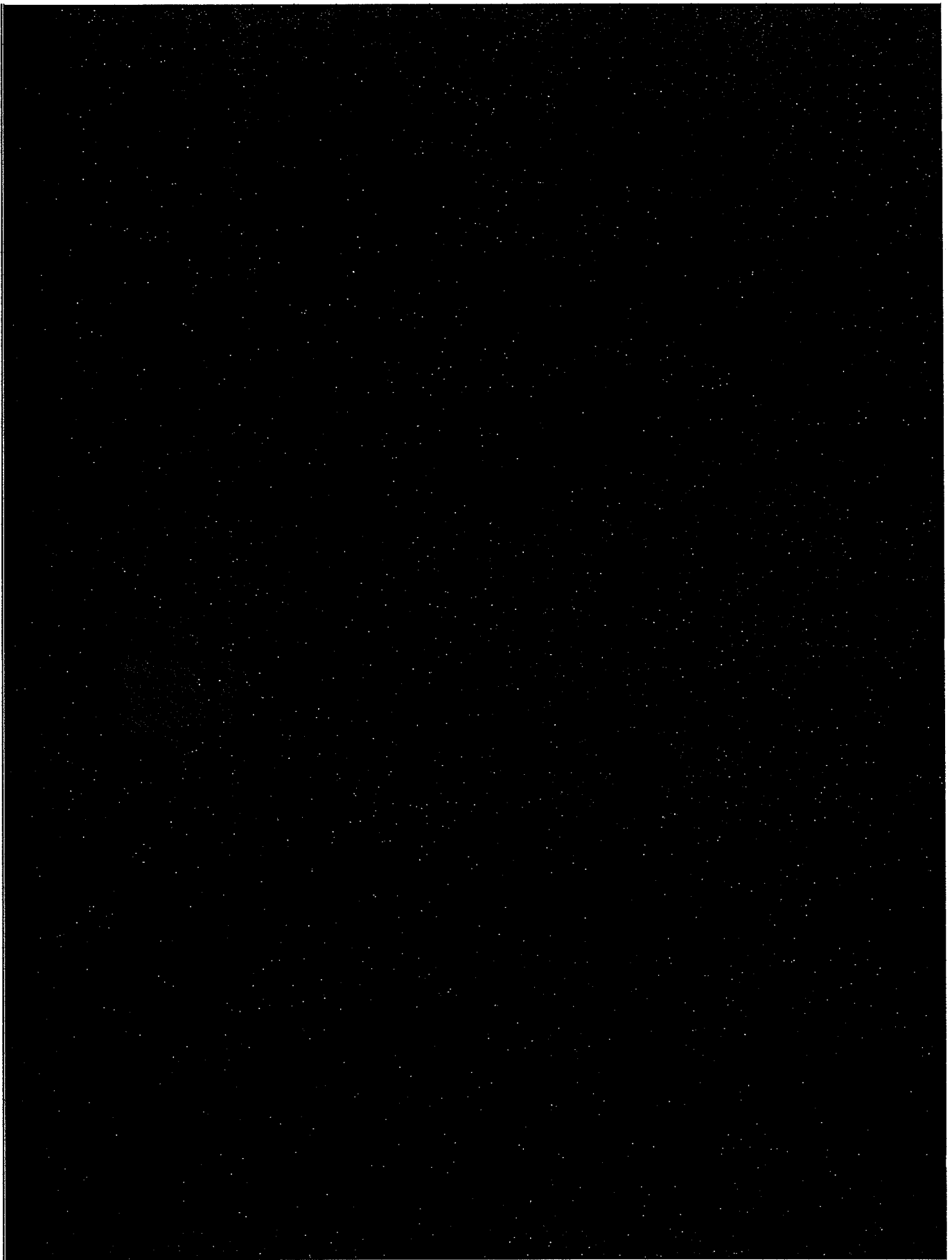
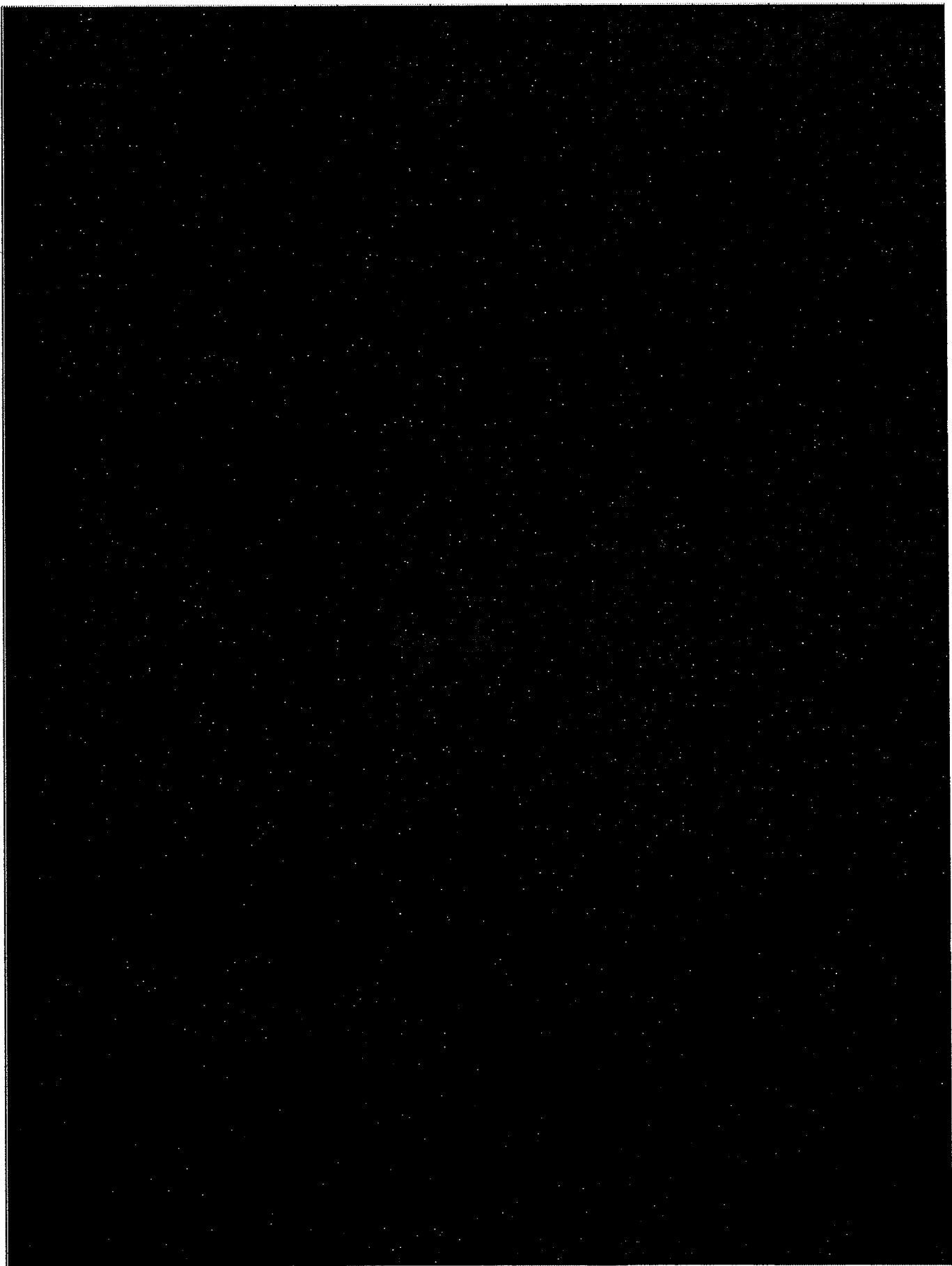


EXHIBIT 3
BRANDENBURG TELEPHONE COMPANY'S
EXPECTED REVENUE SHIFT







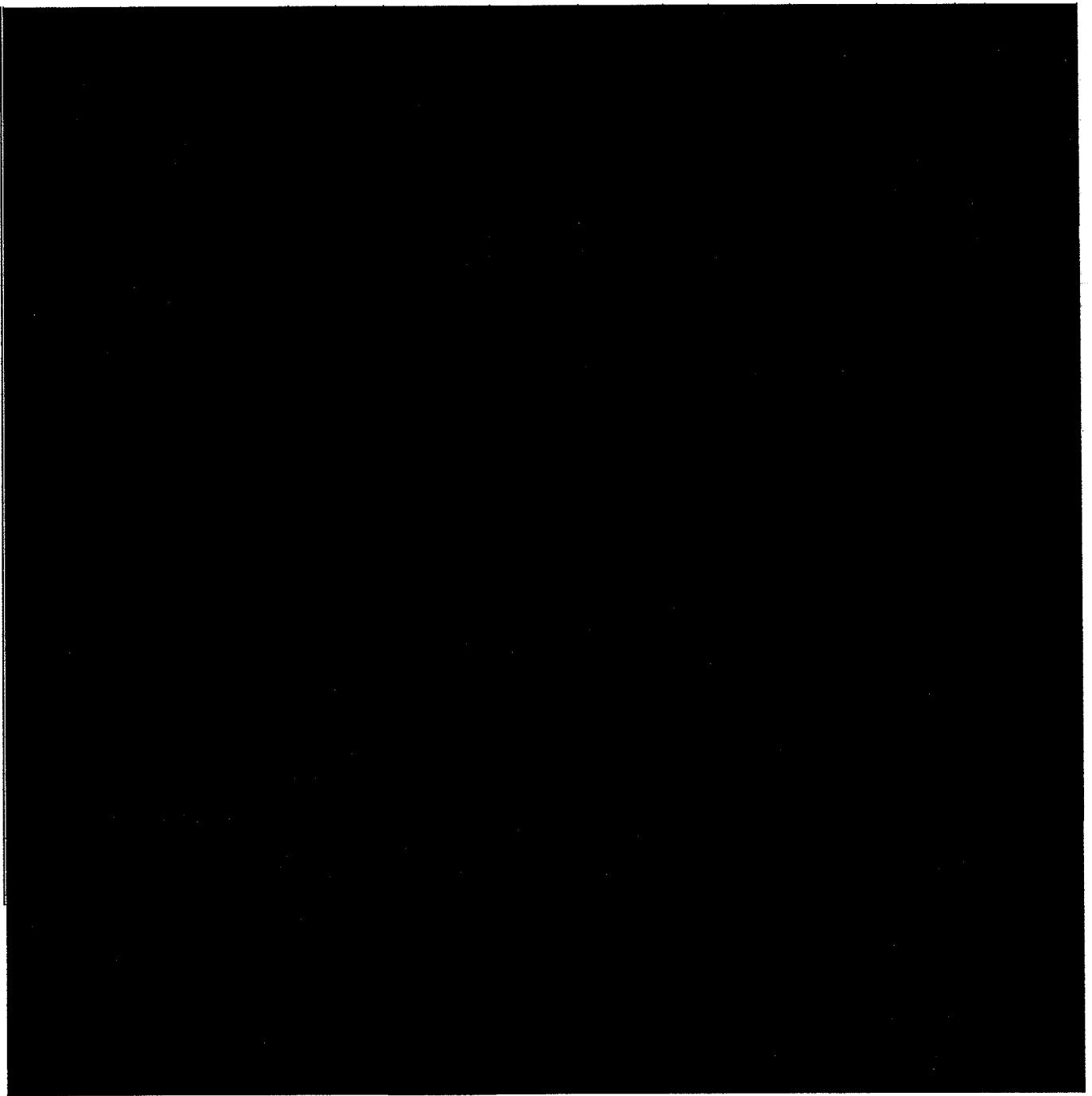
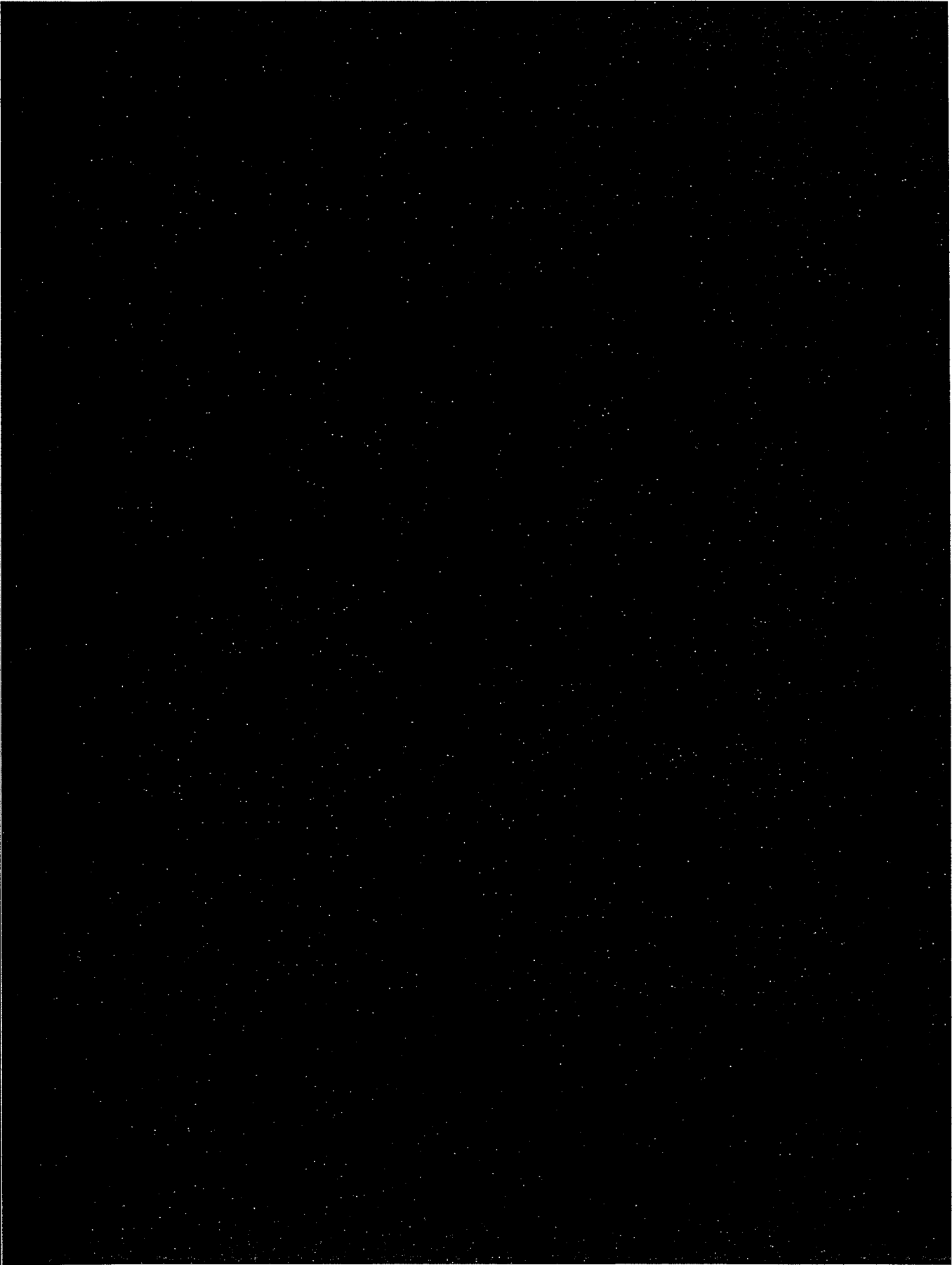
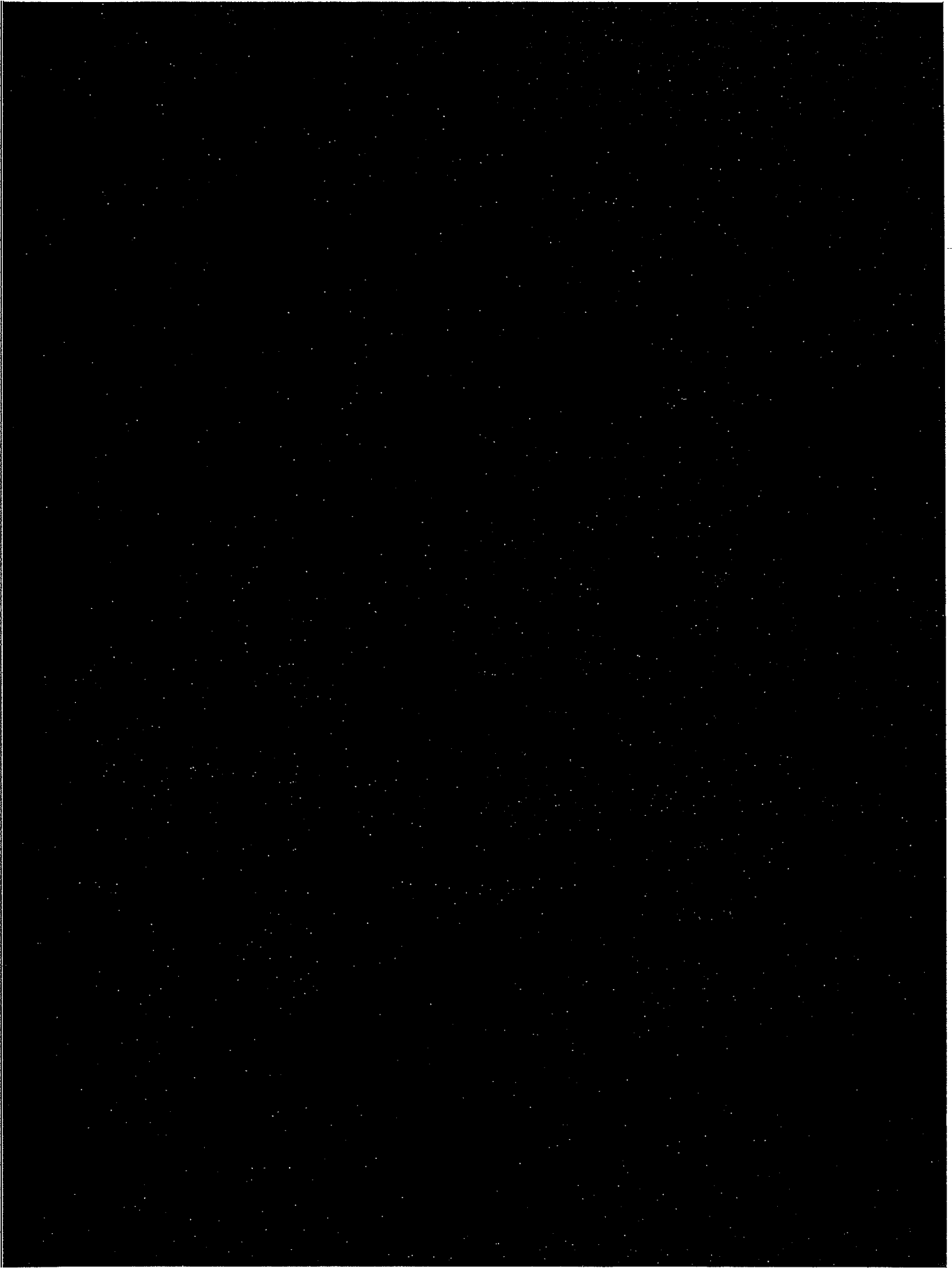


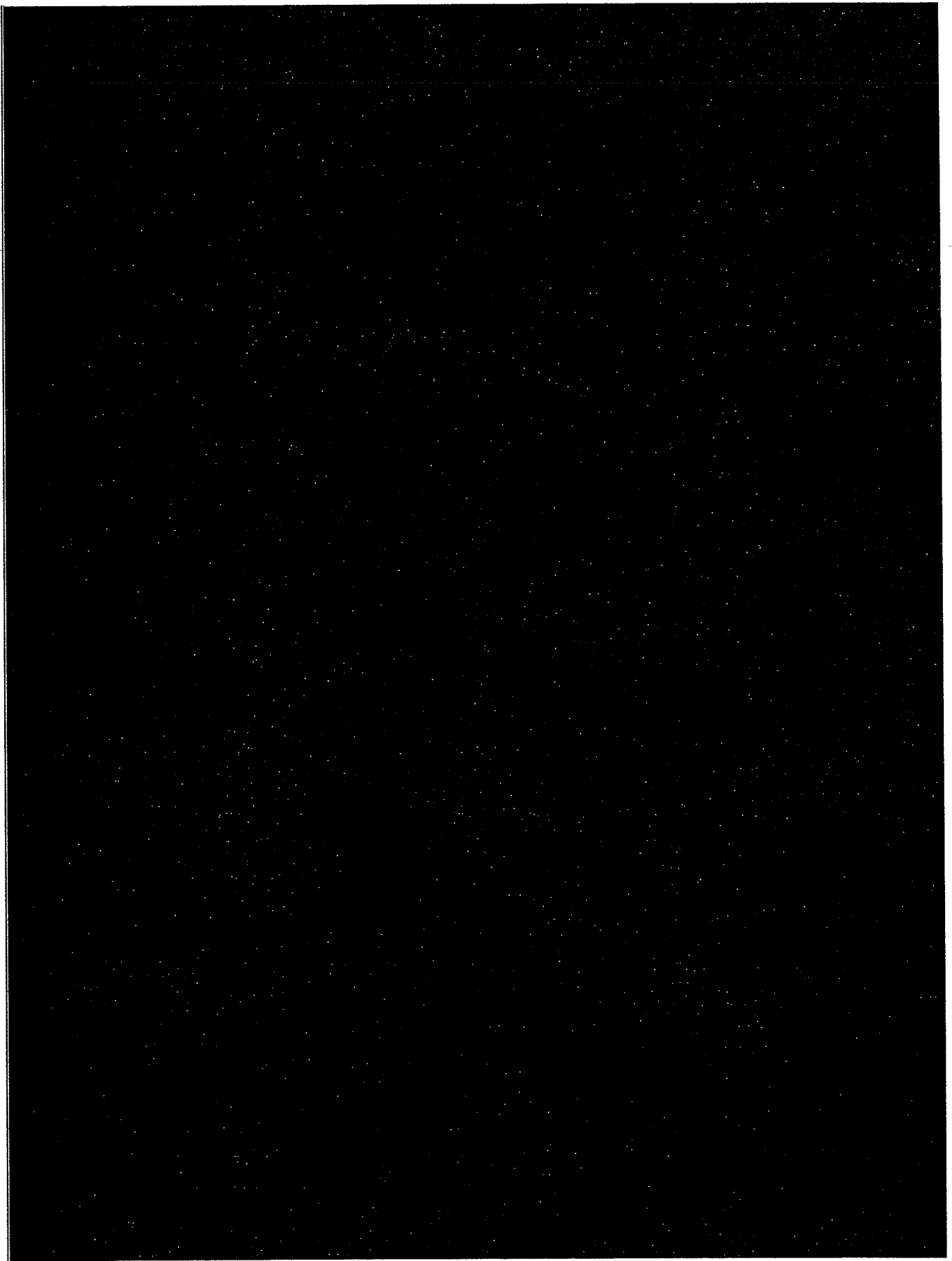
EXHIBIT 4
DUO COUNTY TELEPHONE COOPERATIVE CORPORATION, INC.'S
EXPECTED REVENUE SHIFT



EXHIBIT 5
FOOTHILLS RURAL TELEPHONE COOPERATIVE, INC.'S
EXPECTED REVENUE SHIFT







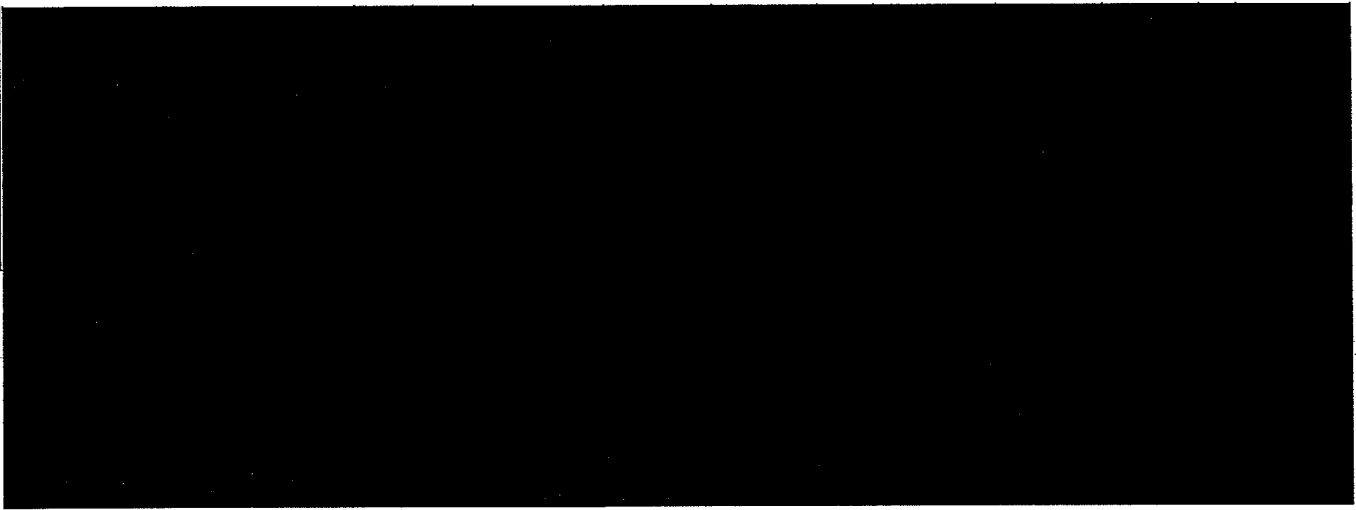
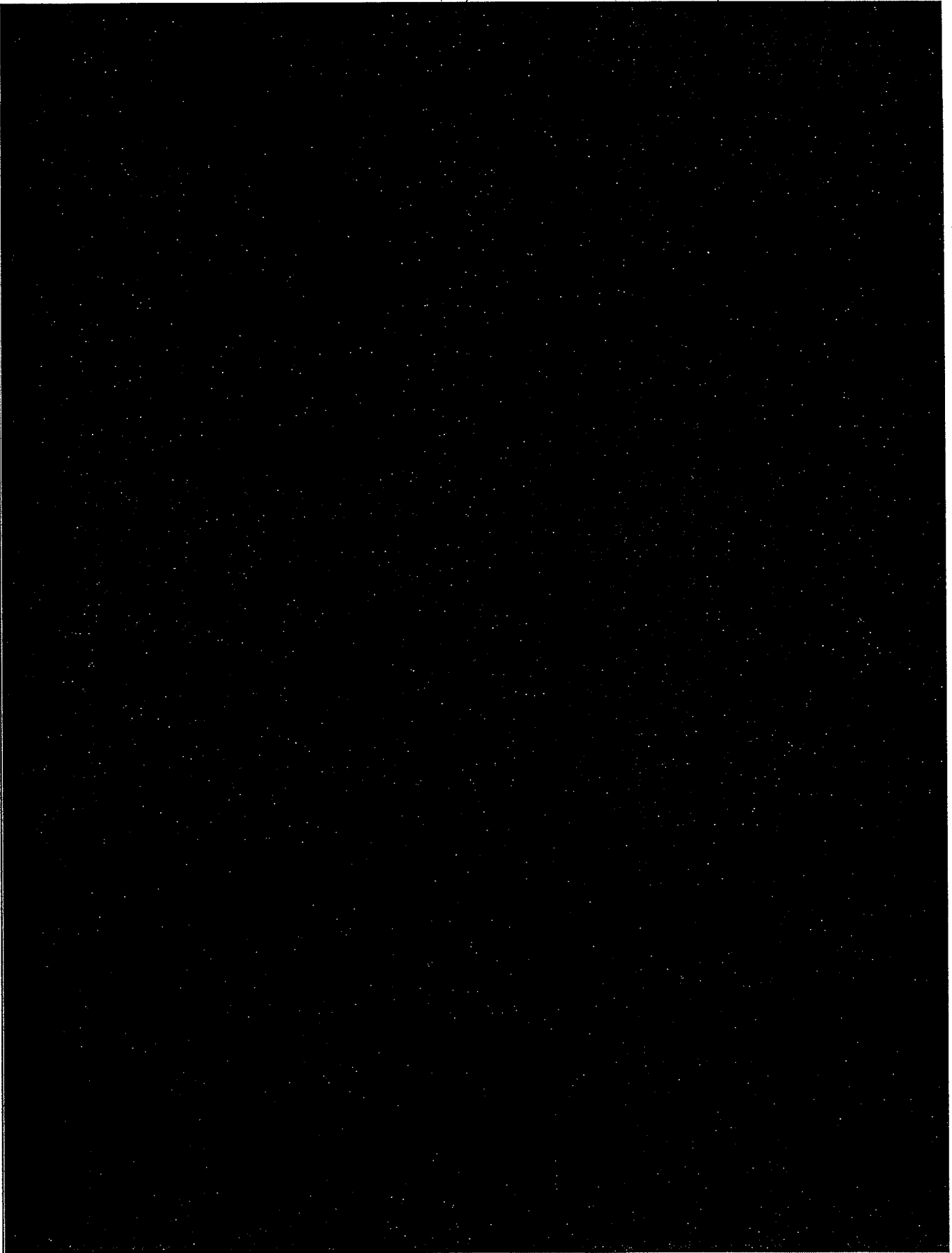


EXHIBIT 6
GEARHART COMMUNICATIONS COMPANY, INC.'S
EXPECTED REVENUE SHIFT



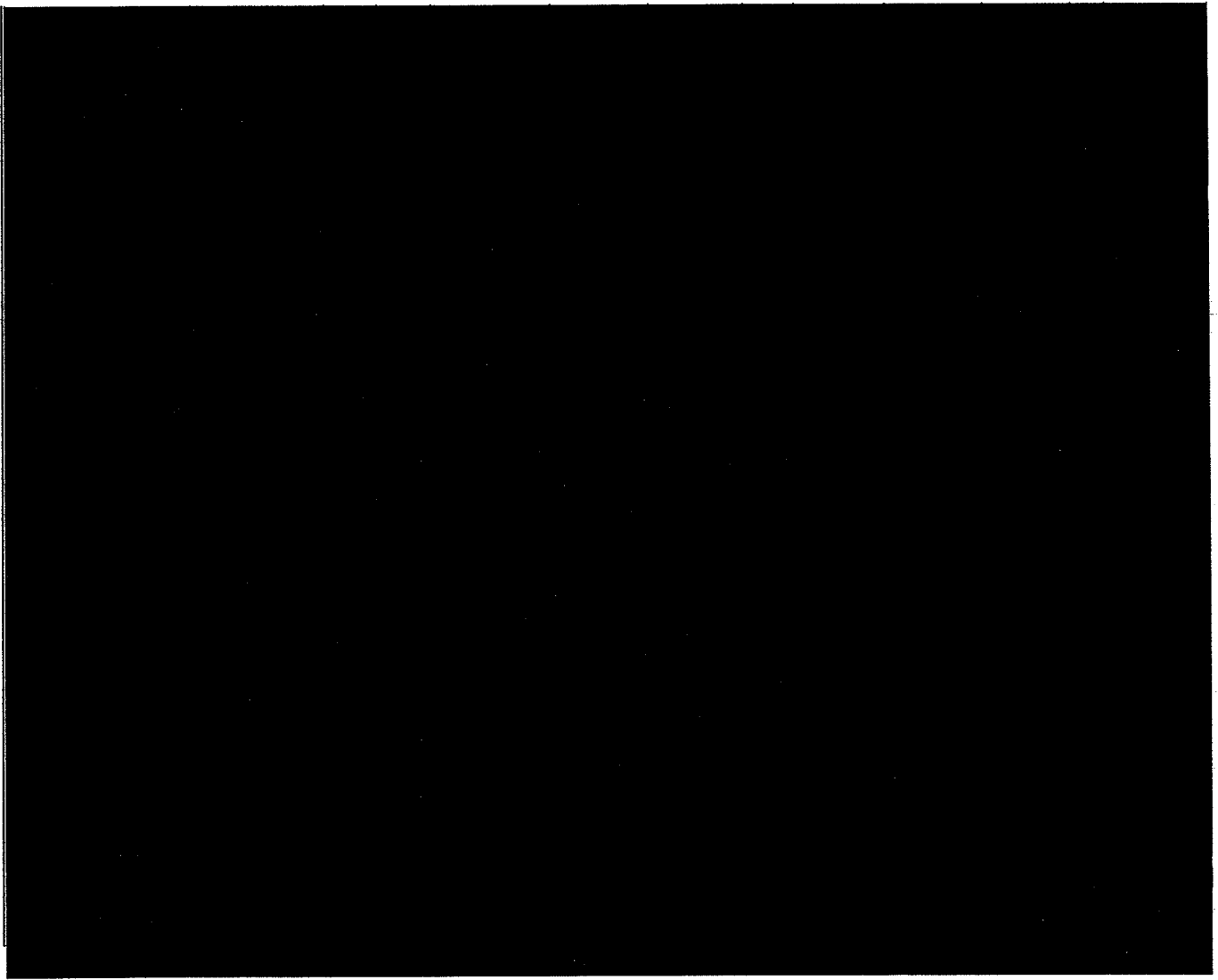
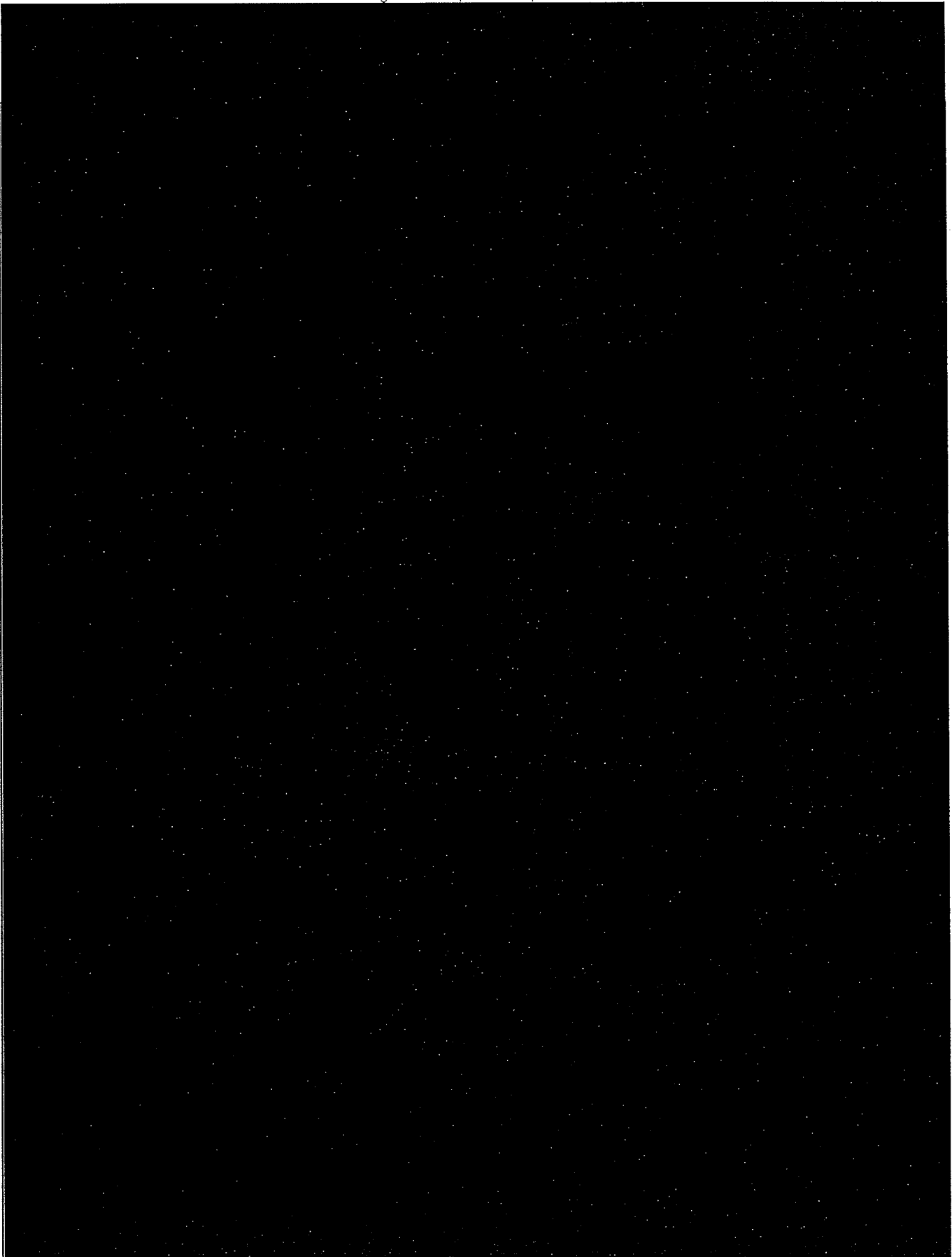
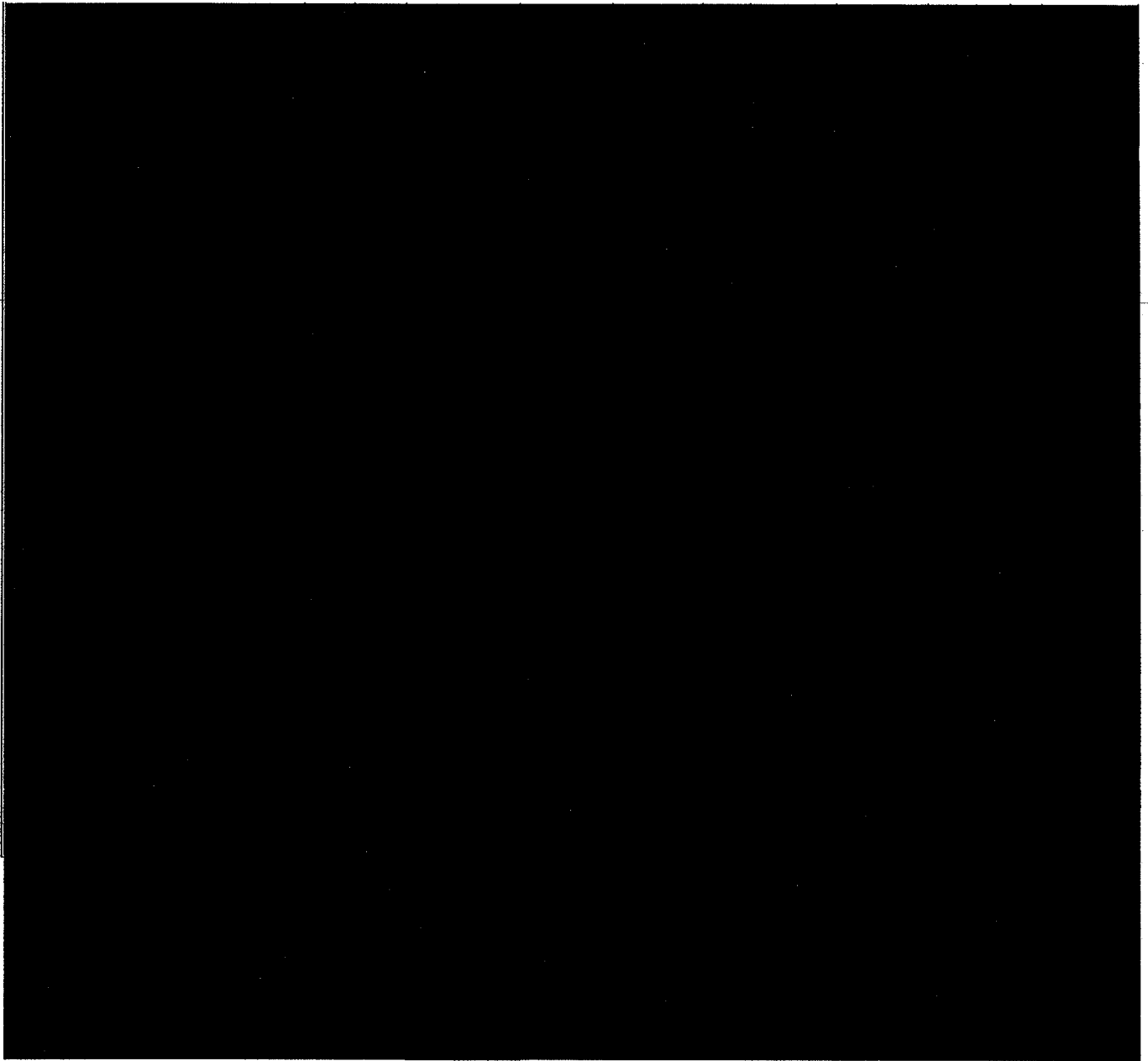


EXHIBIT 7
HIGHLAND TELEPHONE COOPERATIVE, INC.'S
EXPECTED REVENUE SHIFT





1

EXHIBIT 8
LOGAN TELEPHONE COOPERATIVE, INC.'S
EXPECTED REVENUE SHIFT

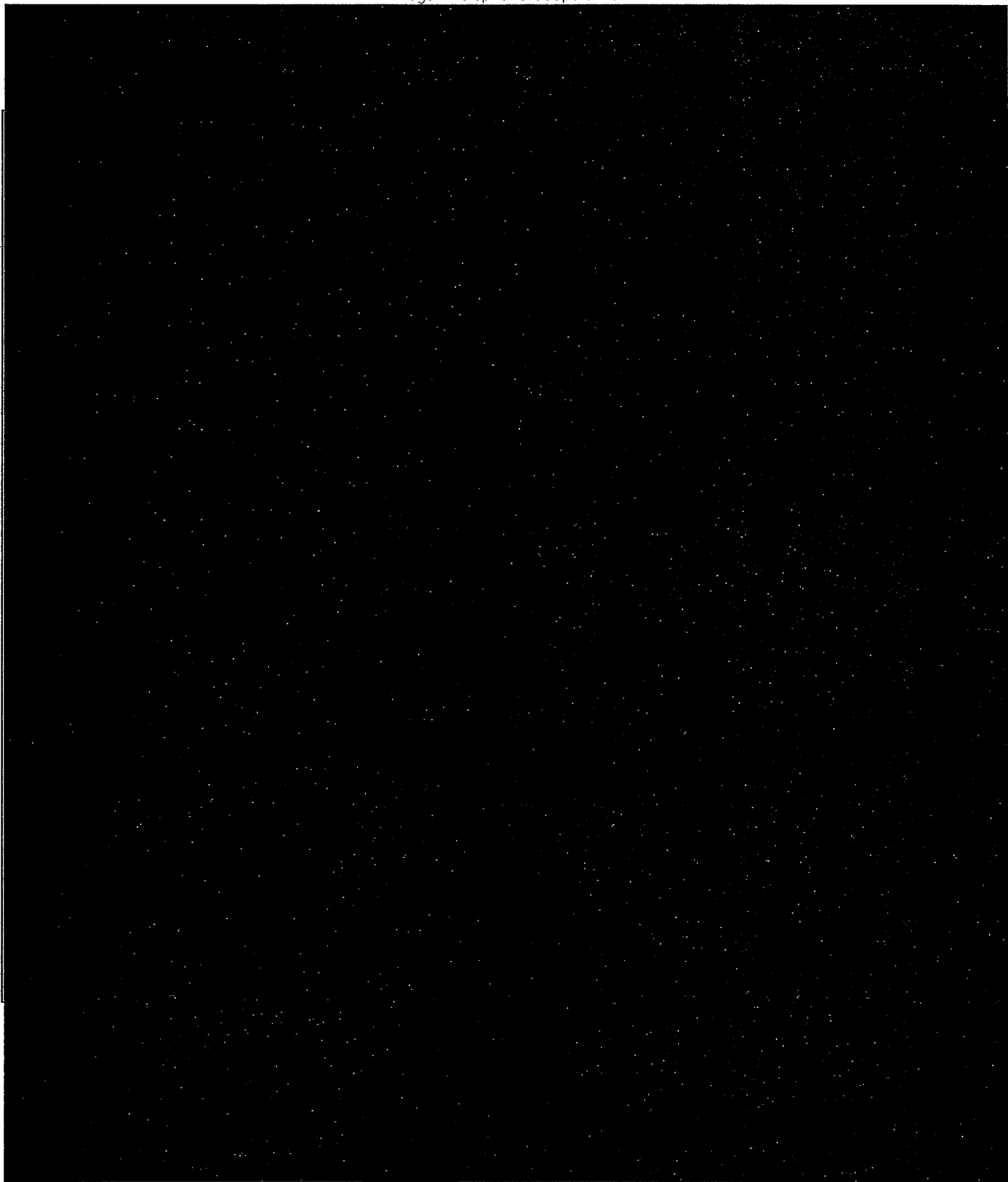
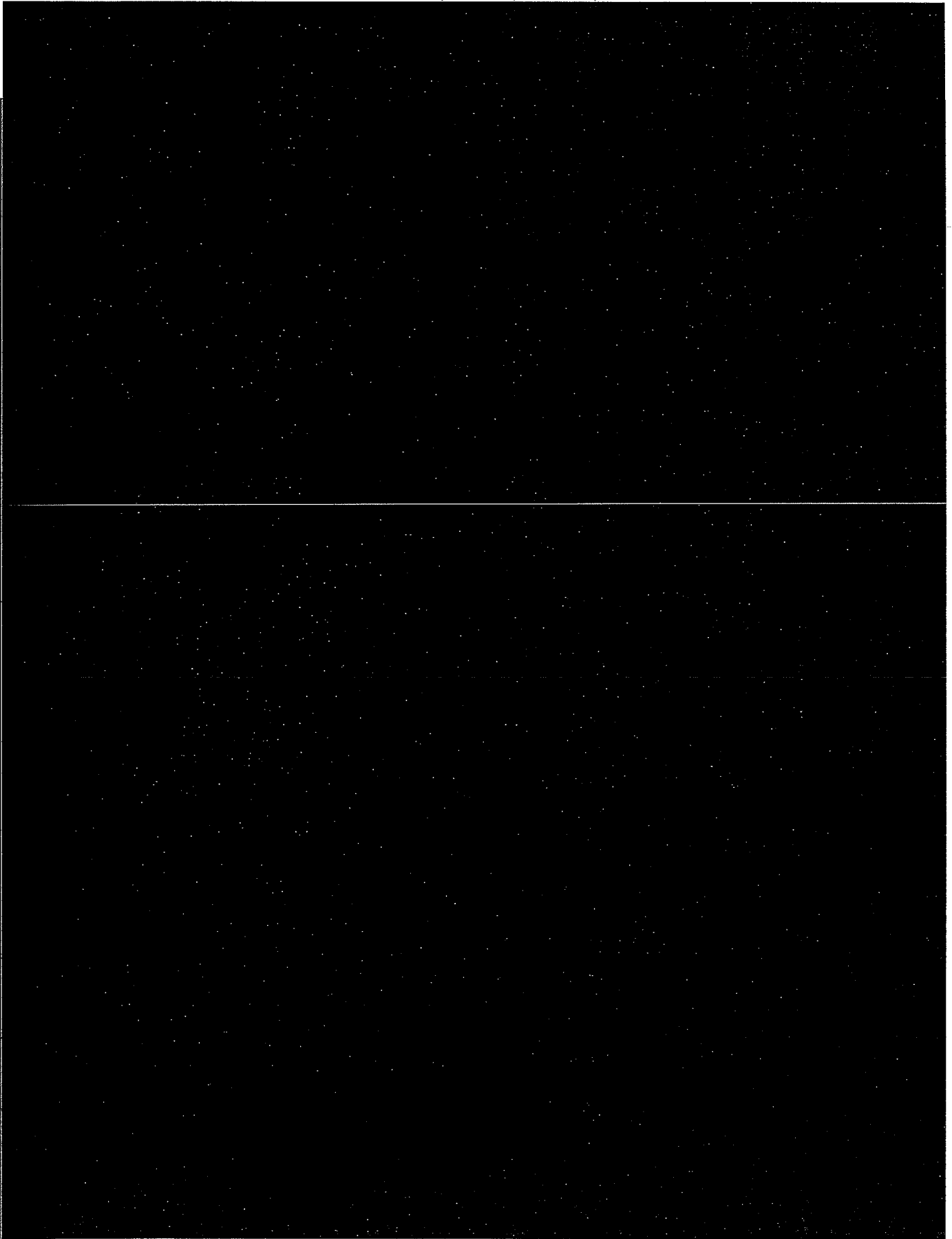
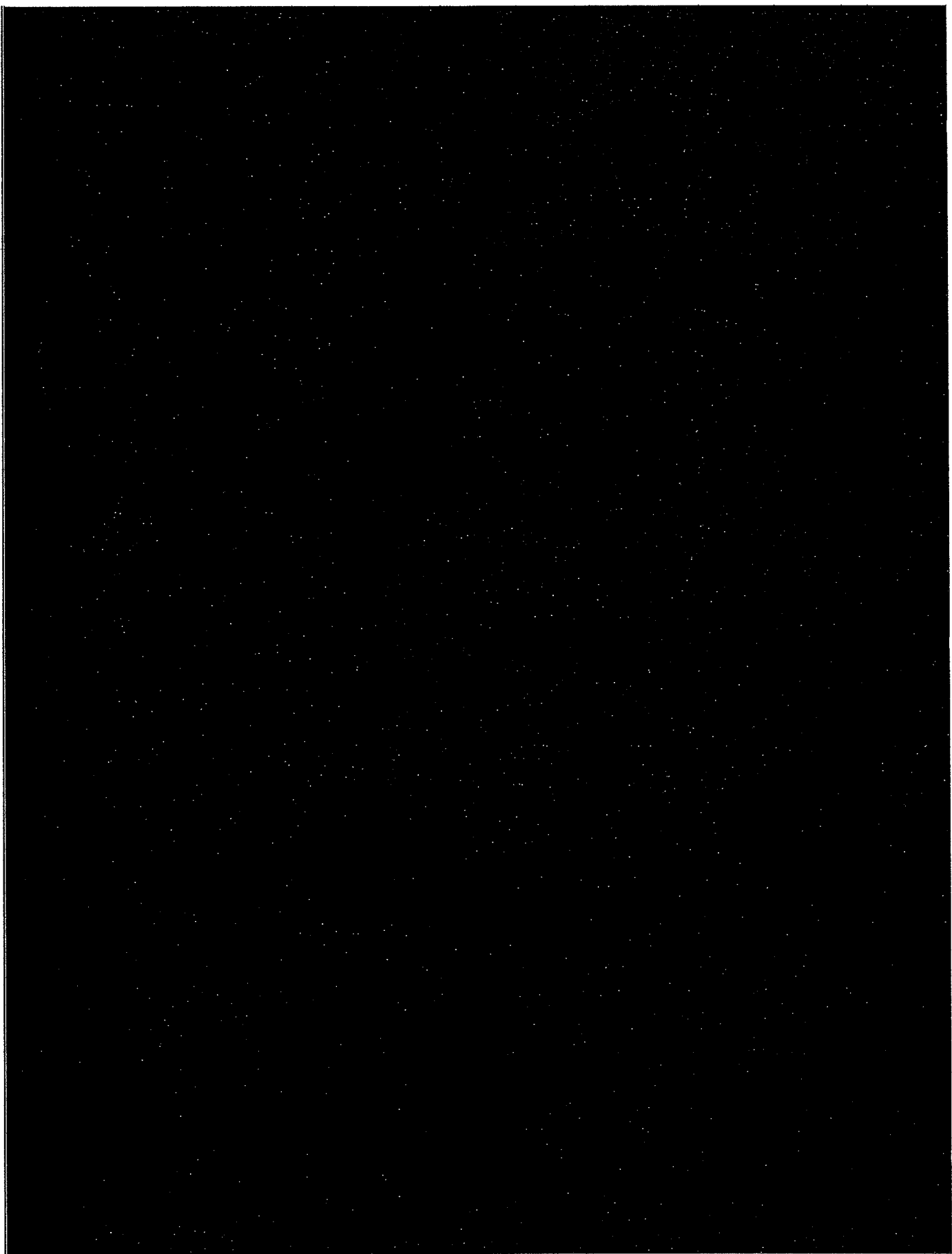
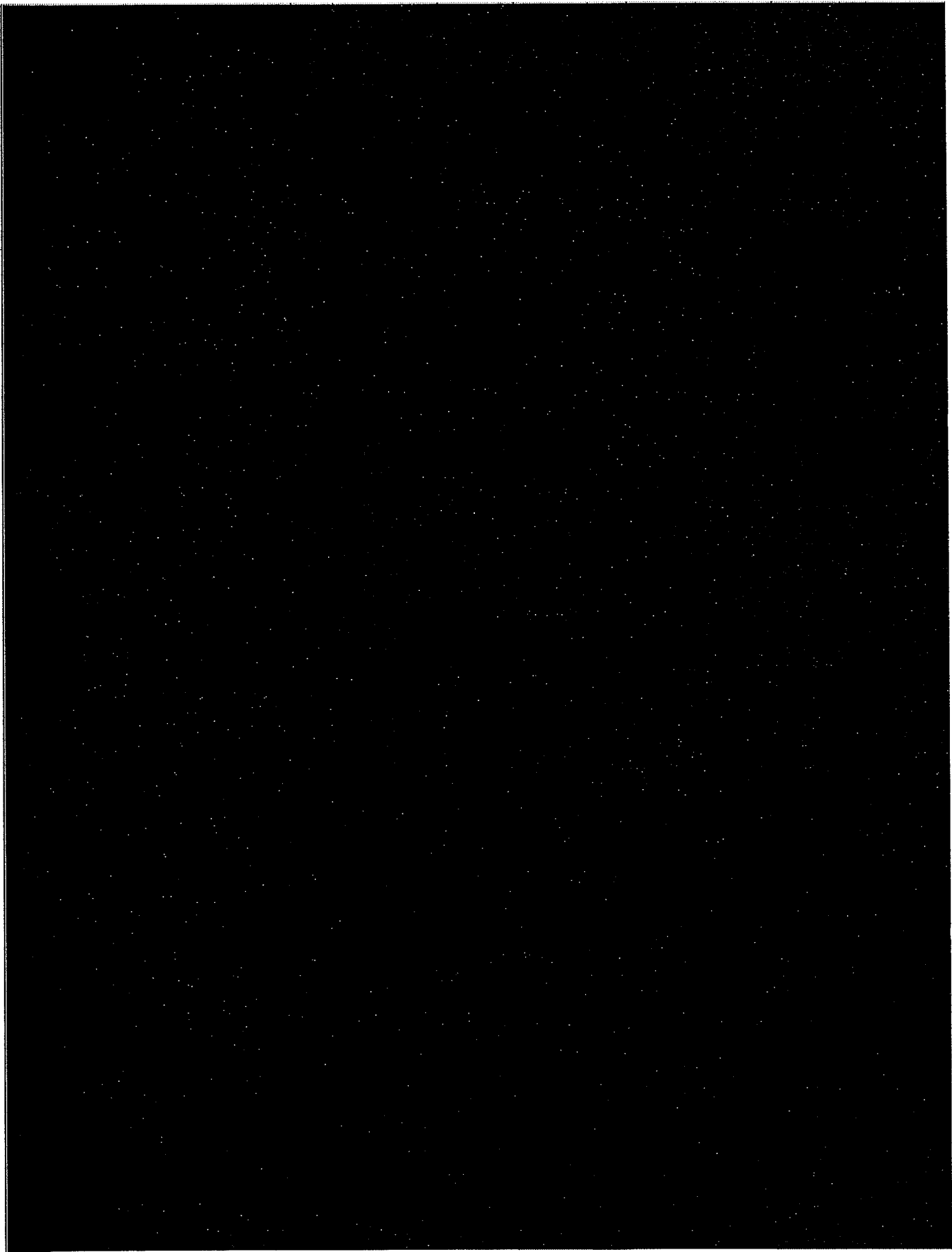


EXHIBIT 9
MOUNTAIN RURAL TELEPHONE COOPERATIVE, INC.'S
EXPECTED REVENUE SHIFT







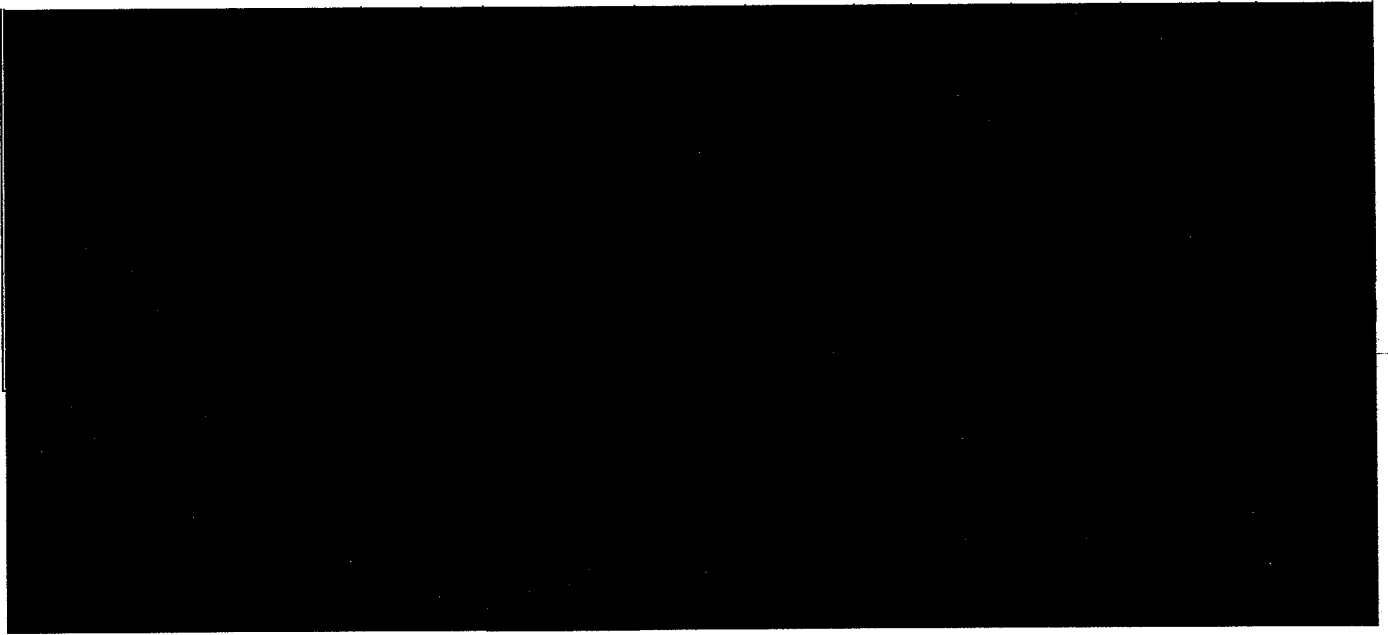


EXHIBIT 10
NORTH CENTRAL TELEPHONE COOPERATIVE CORPORATION'S
EXPECTED REVENUE SHIFT

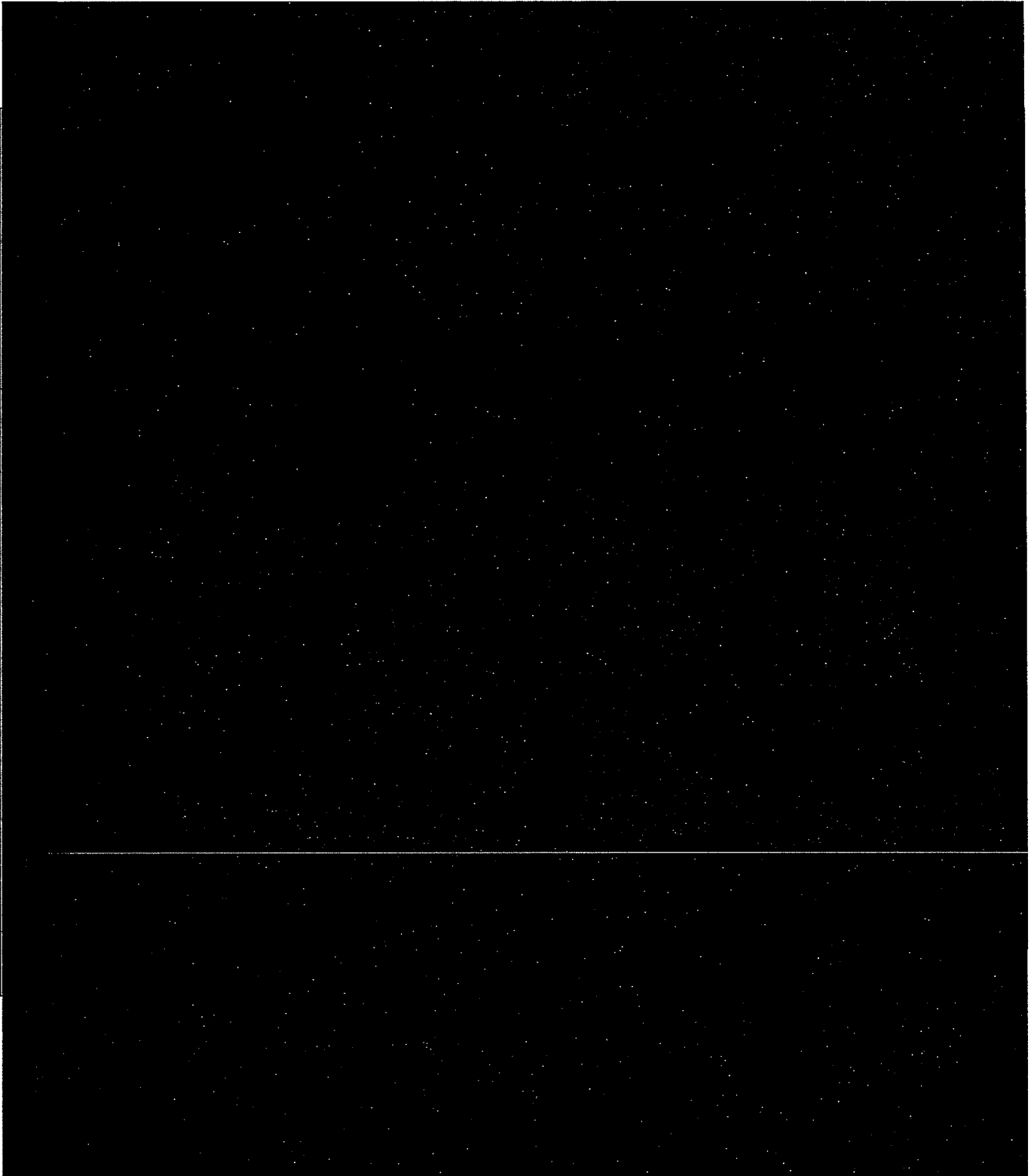


EXHIBIT 11
PEOPLES RURAL TELEPHONE COOPERATIVE, INC.'S
EXPECTED REVENUE SHIFT



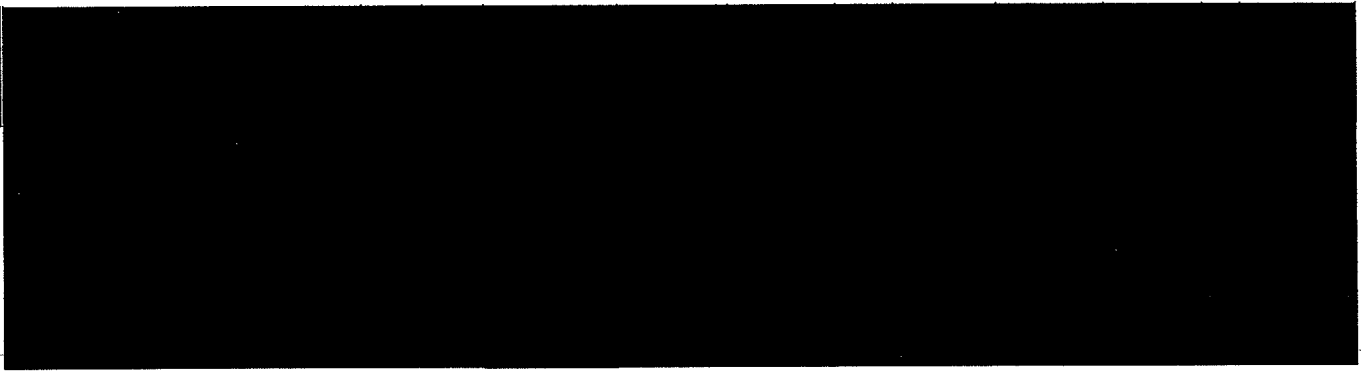


EXHIBIT 12
SOUTH CENTRAL RURAL TELEPHONE COOPERATIVE CORPORATION, INC.'S
EXPECTED REVENUE SHIFT

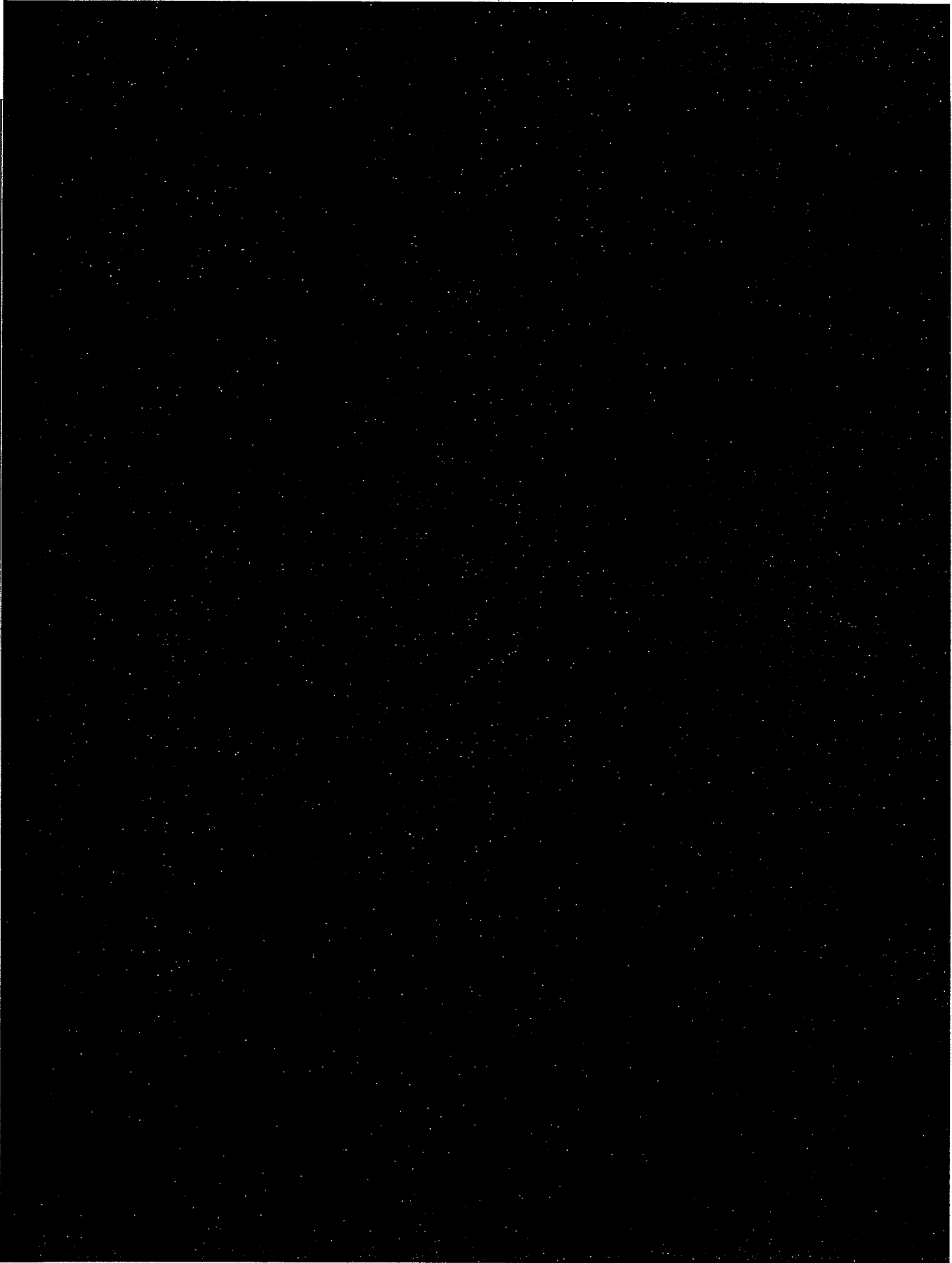
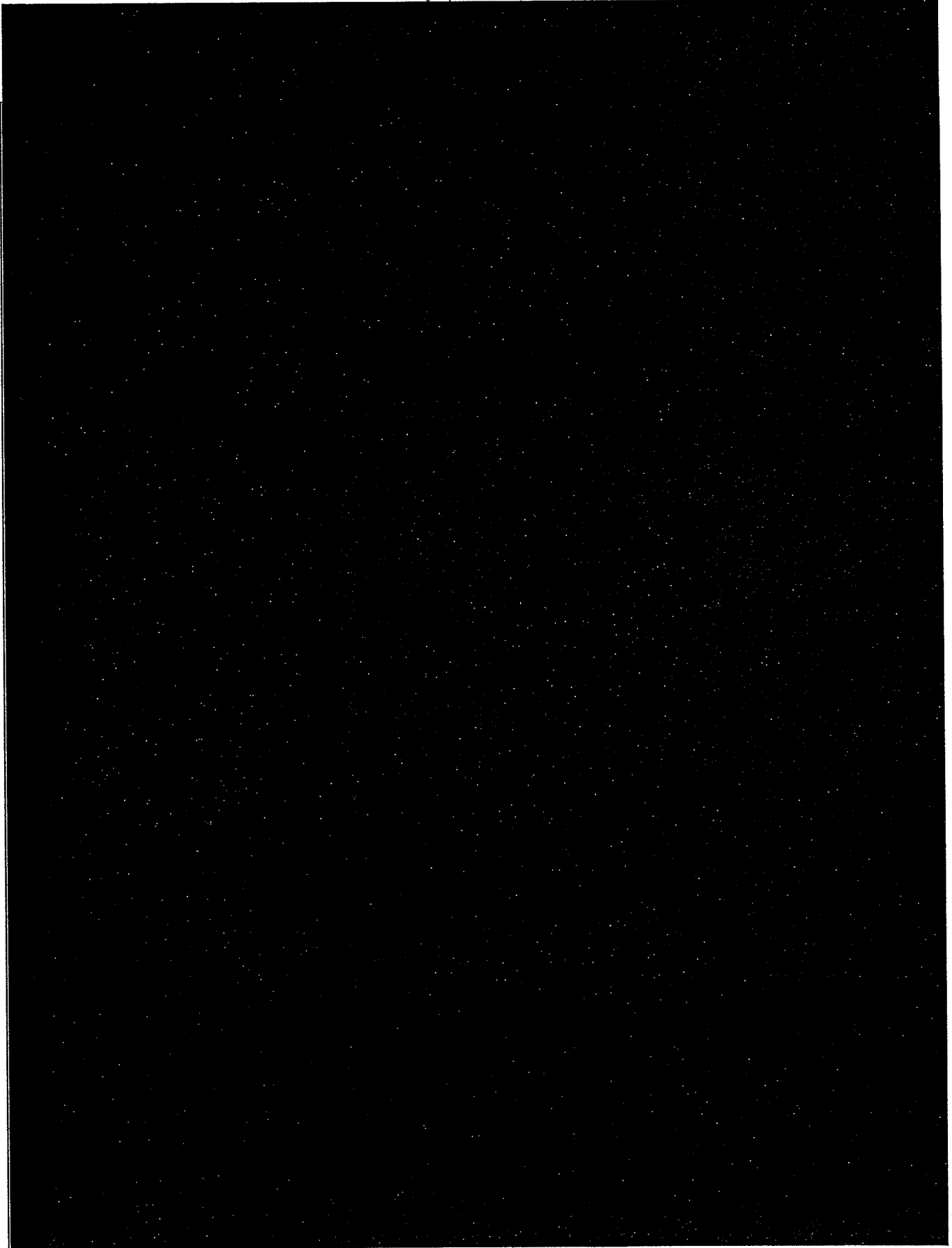
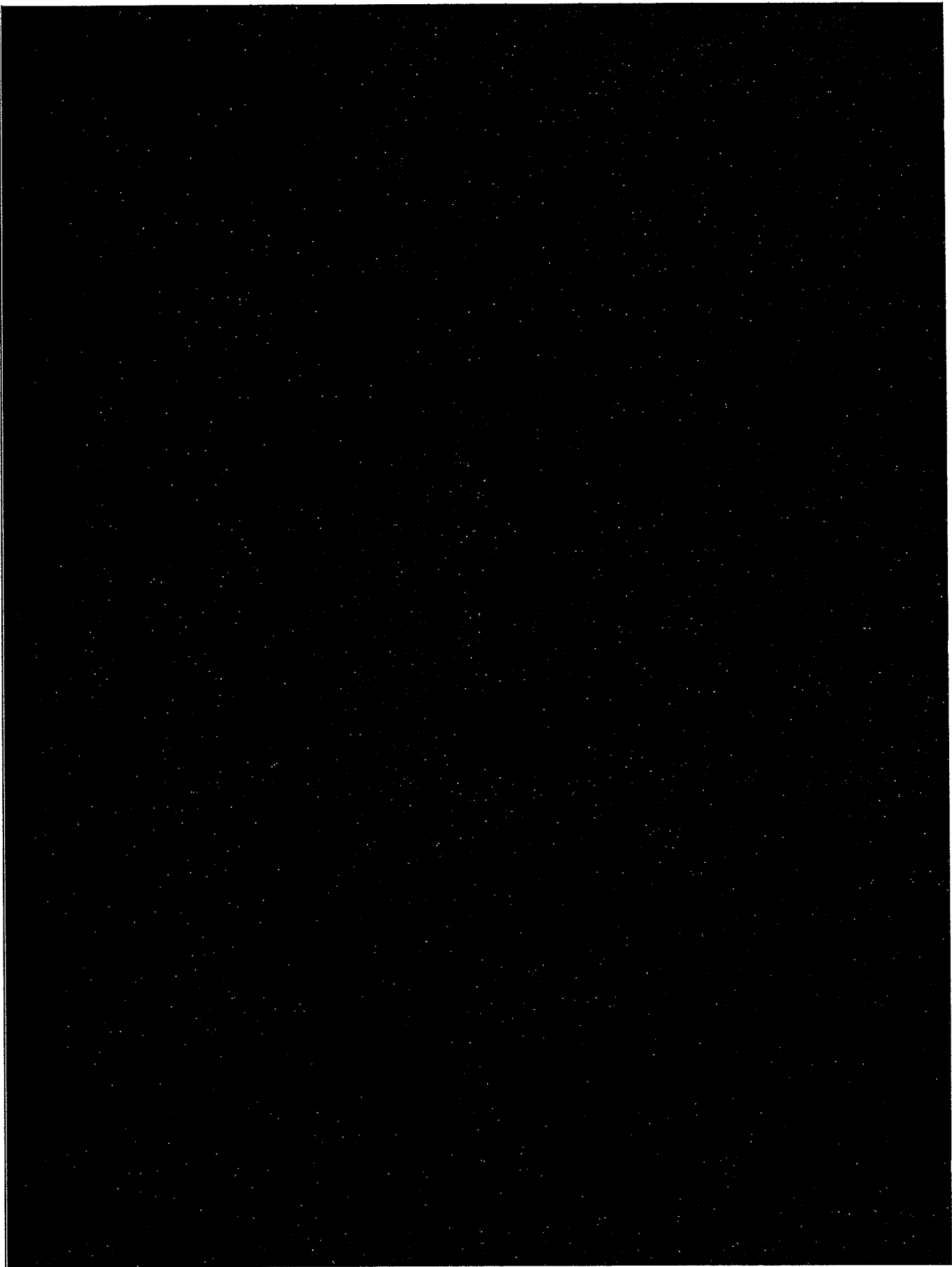




EXHIBIT 13
THACKER-GRIGSBY TELEPHONE COMPANY, INC.'S
EXPECTED REVENUE SHIFT





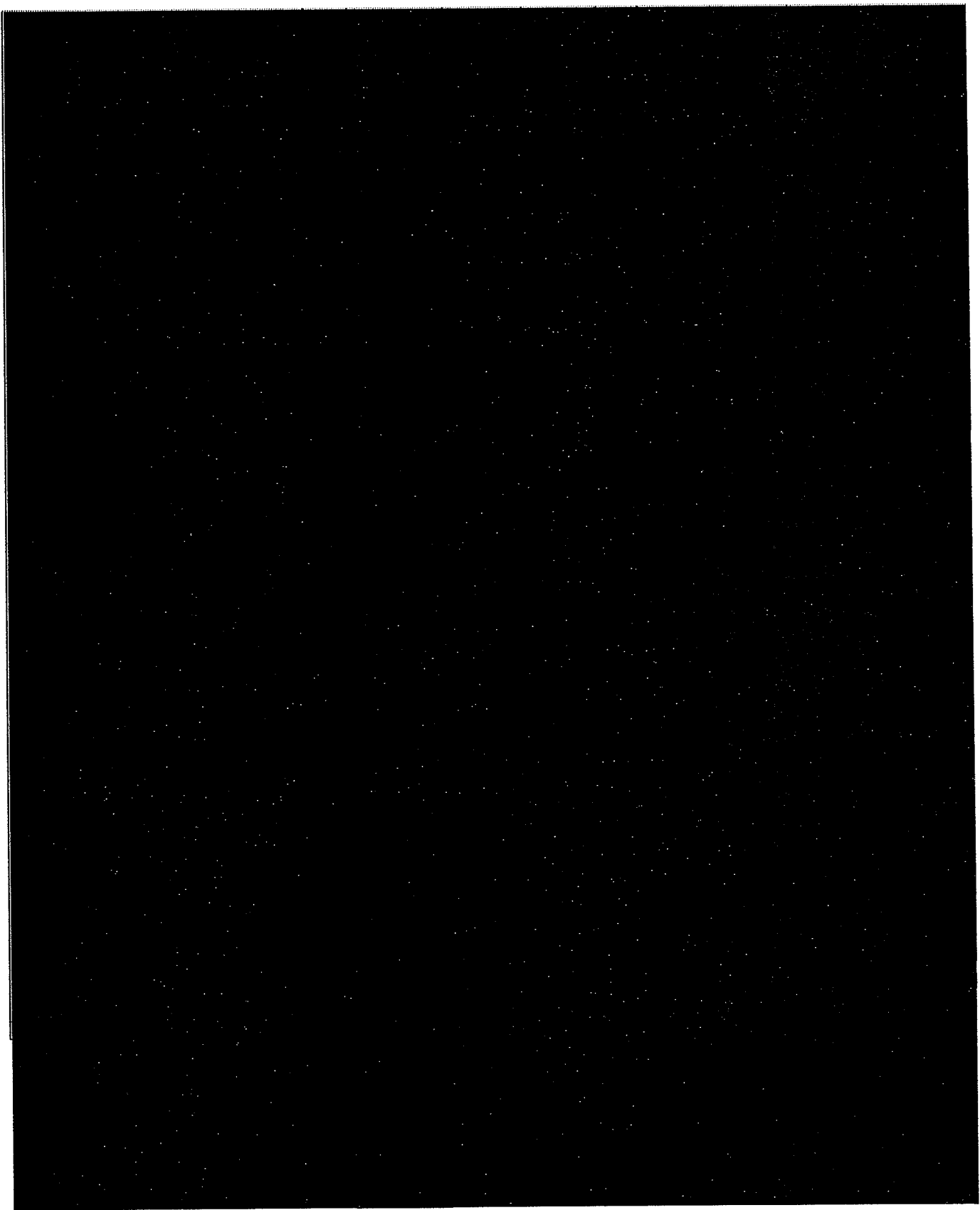


EXHIBIT 14
WEST KENTUCKY RURAL TELEPHONE COOPERATIVE CORPORATION, INC.'S
EXPECTED REVENUE SHIFT

