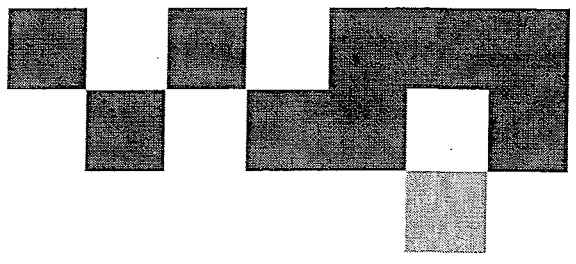
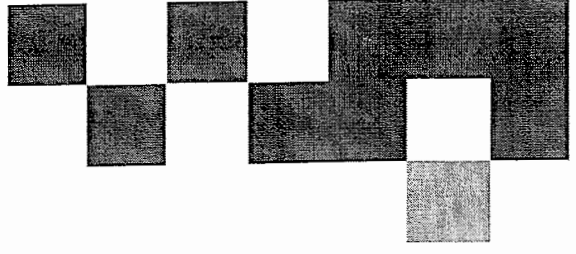
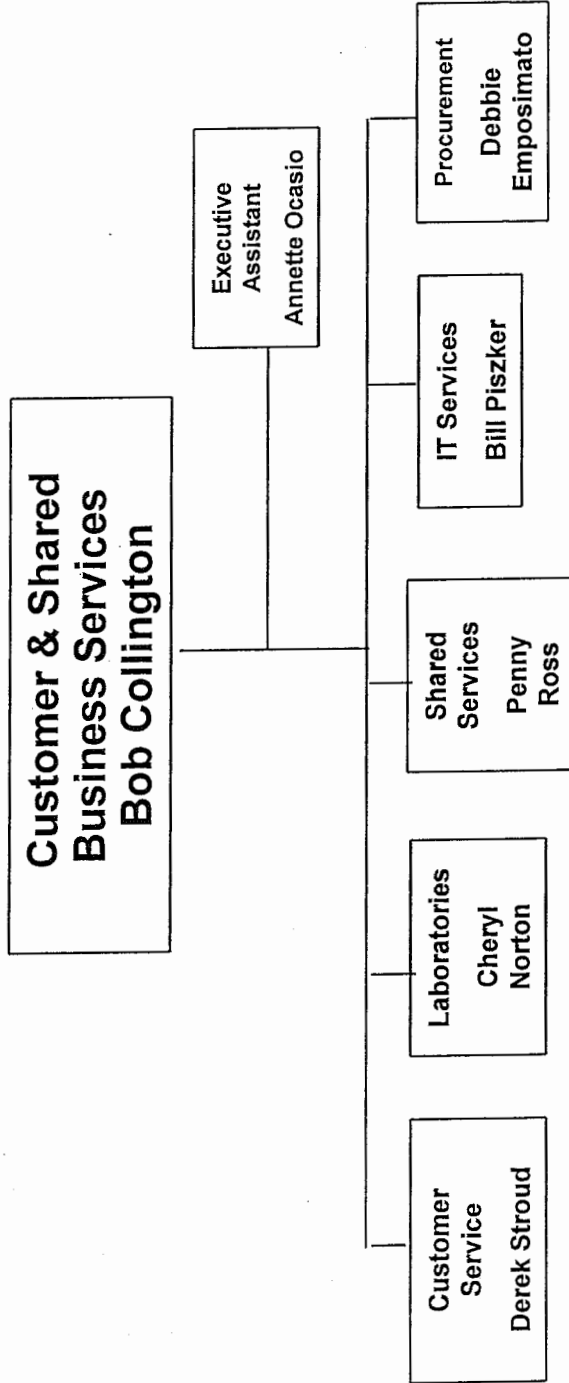




# 3. Customer and Shared Business Services

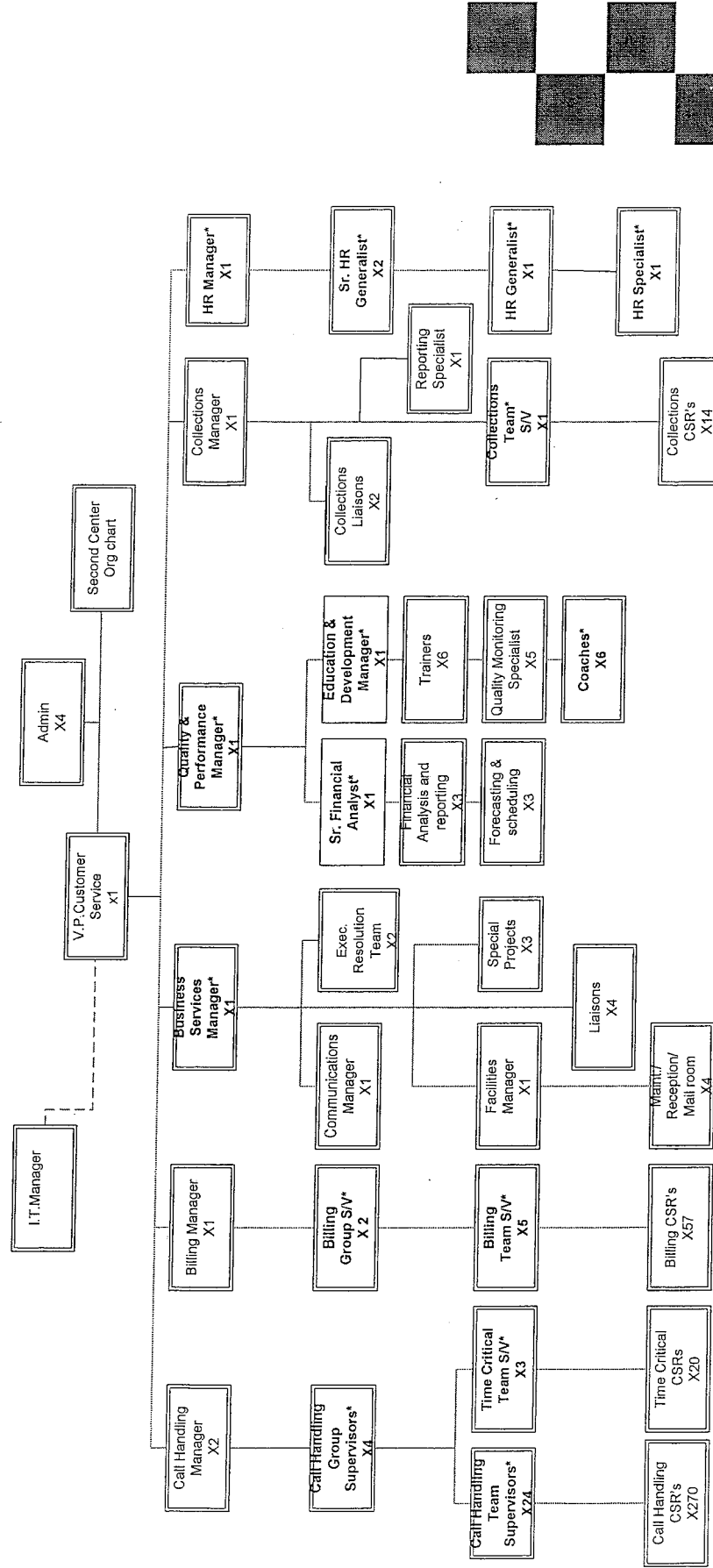


# Customer & Shared Business Services



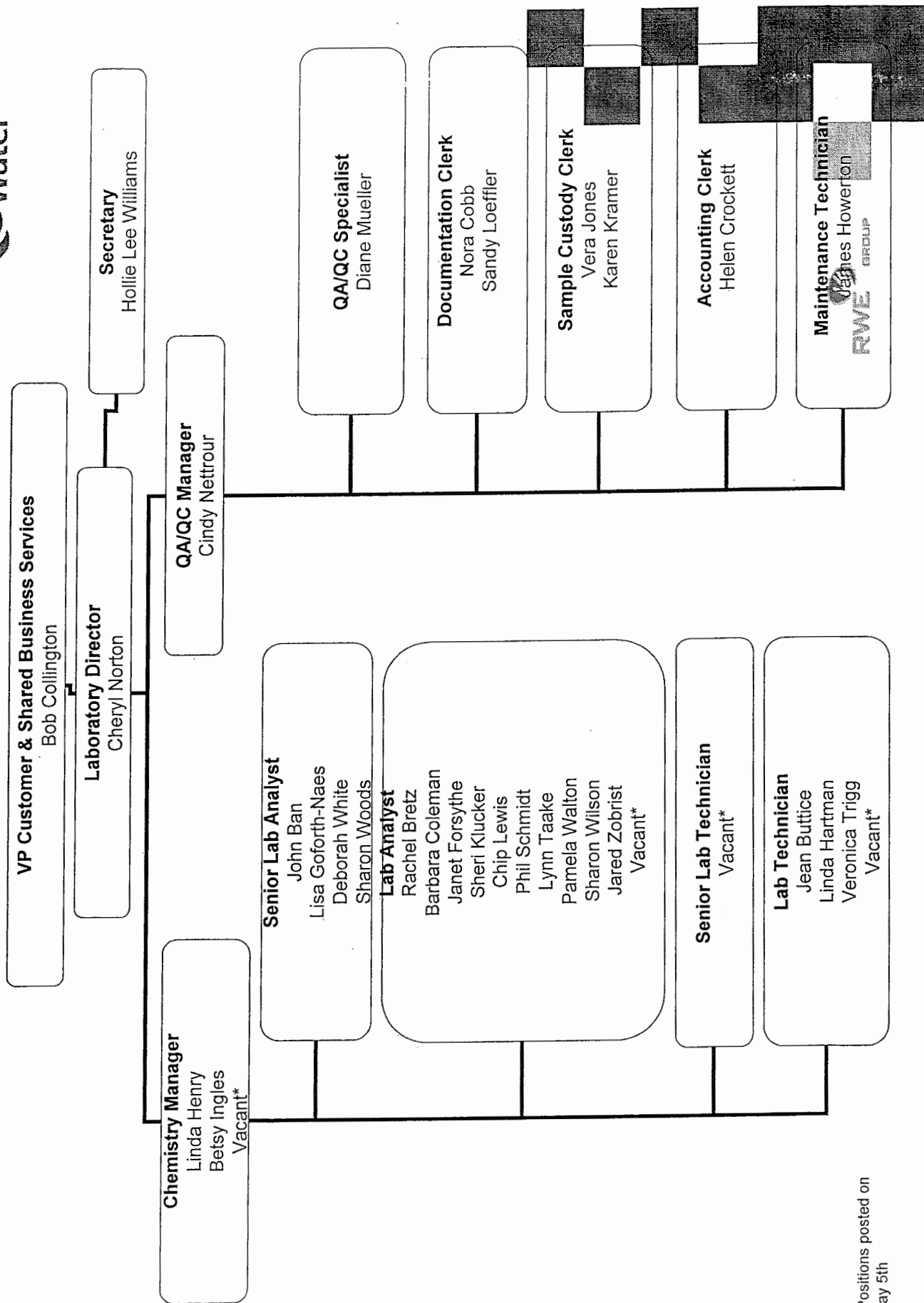


# Customer Service – Alton Call Center



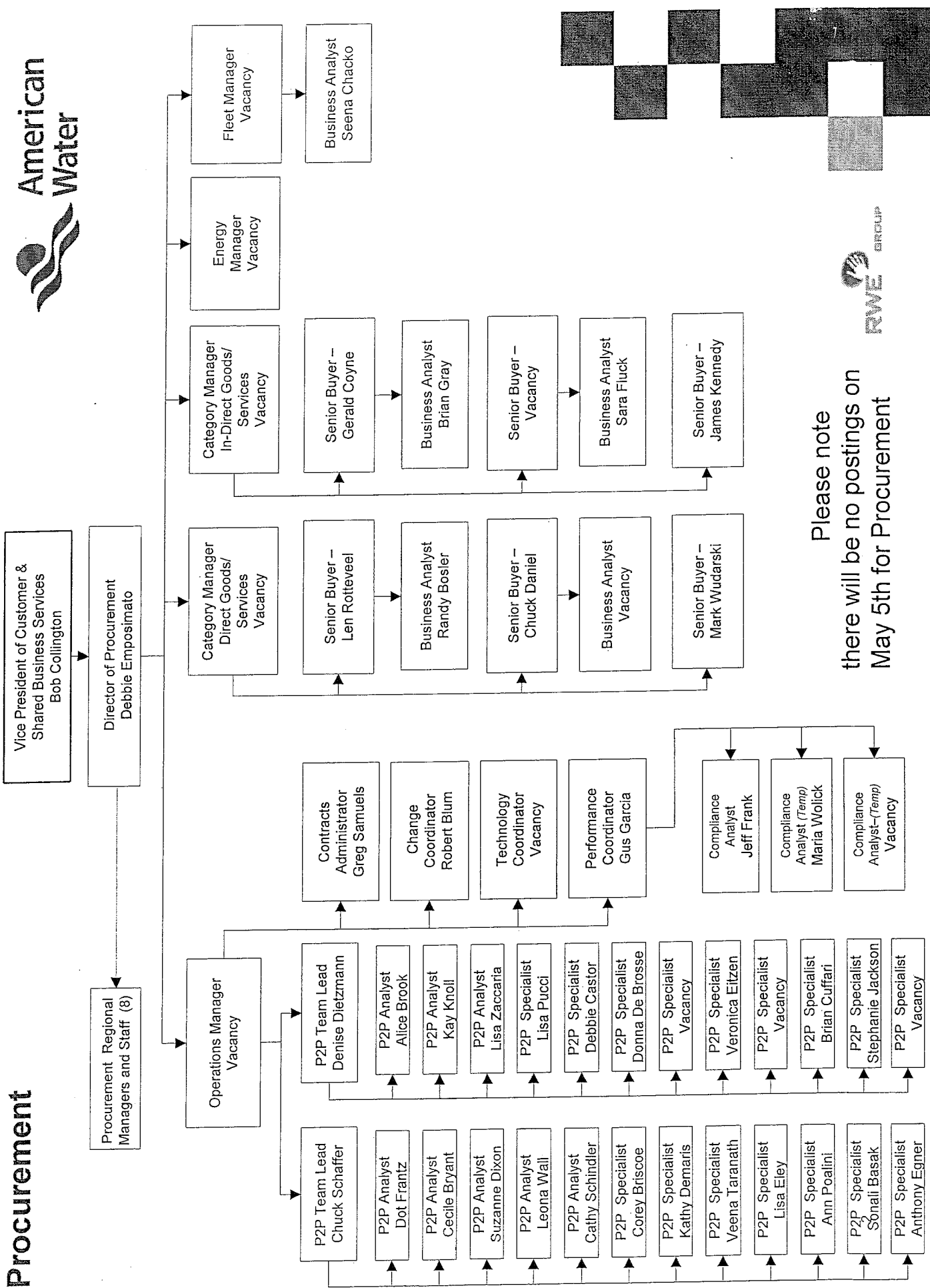
\*Positions posted on May 5th

# Belleville Laboratory



\*Positions posted on  
May 5th

# Procurement

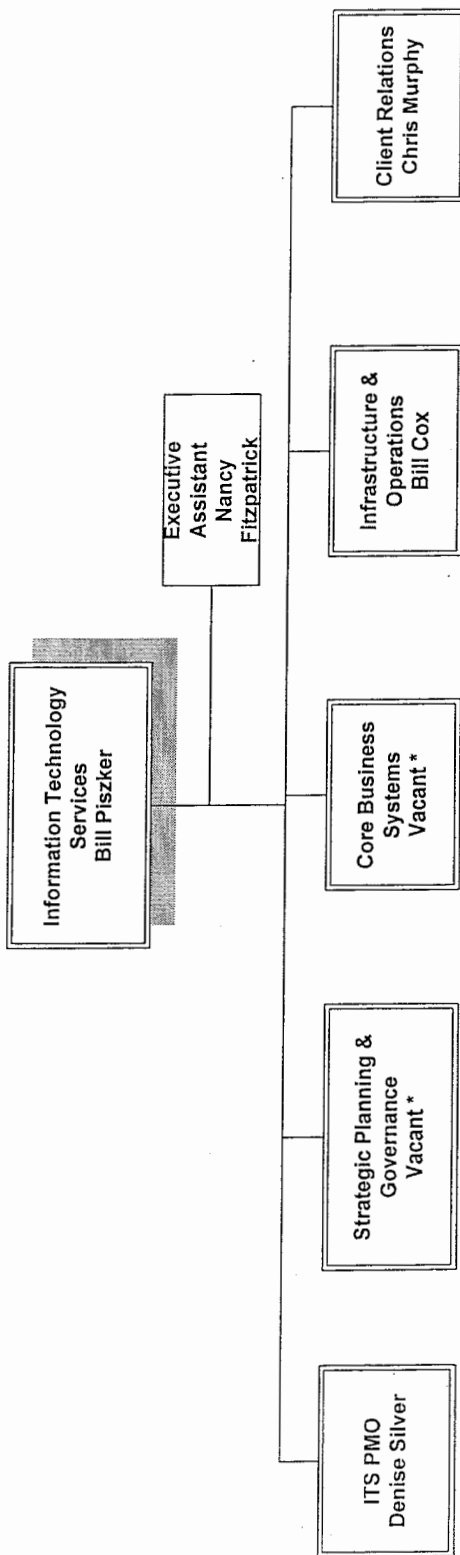


Please note  
there will be no postings on  
May 5th for Procurement

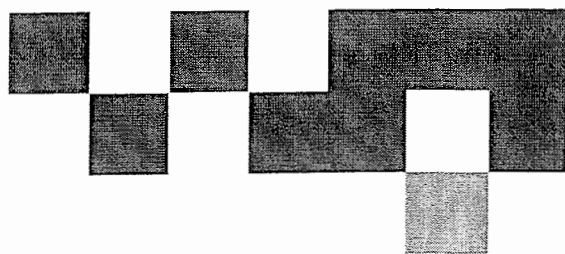




# ITS - Administration

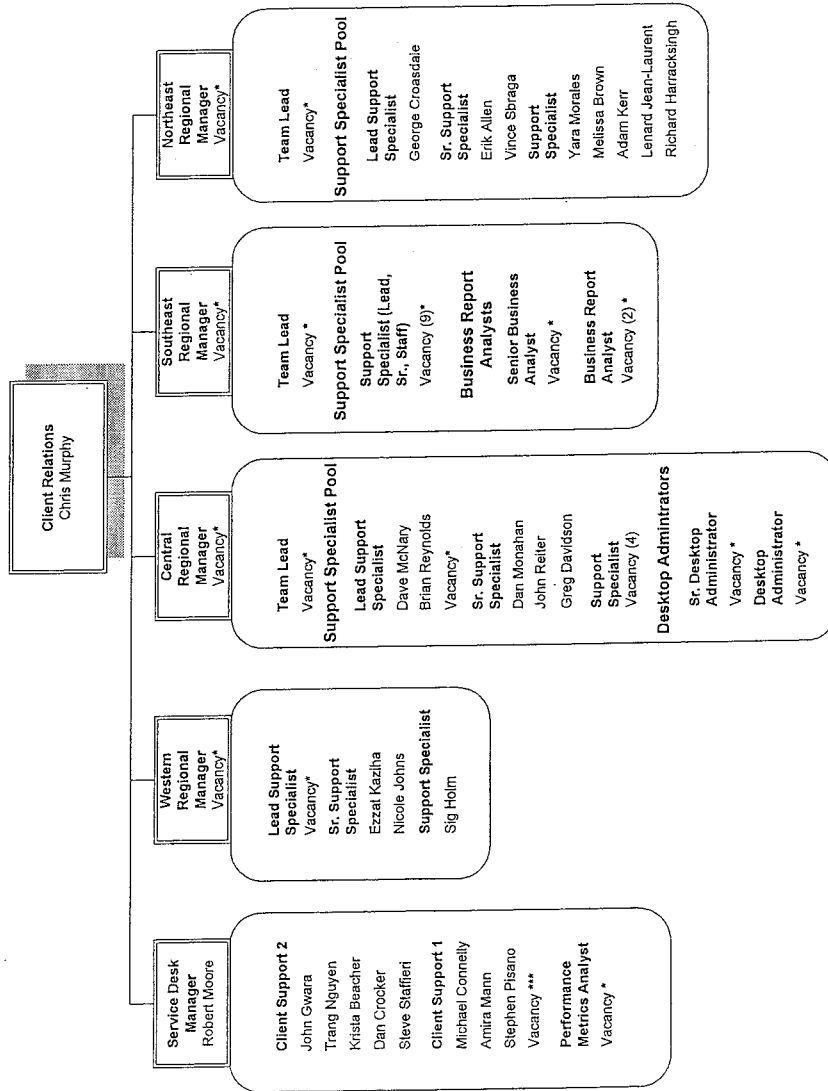


\* Posted on May 5th

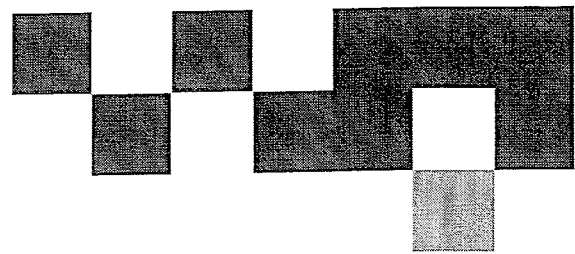




# ITS - Client Relations

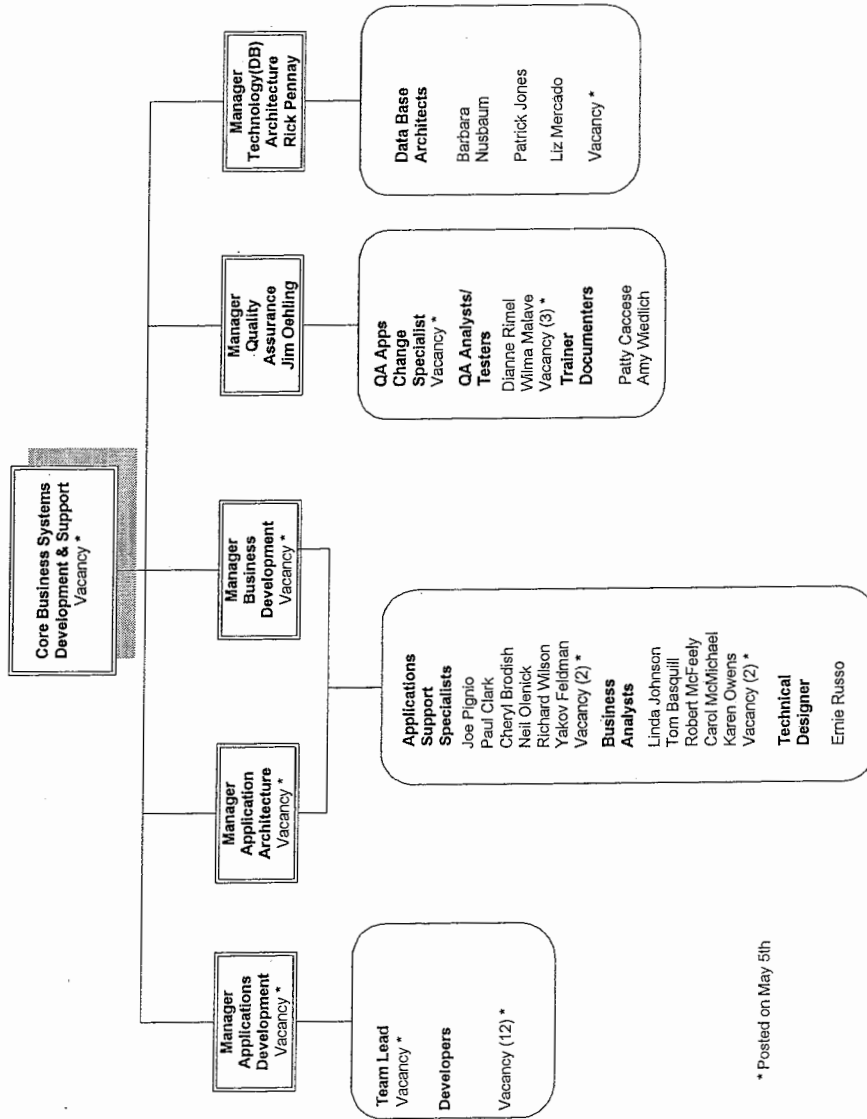


\* Posted on May 5th  
\*\* Previously posted

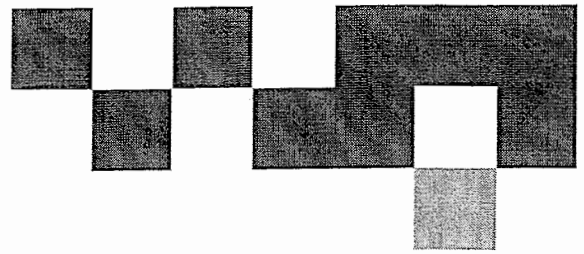




# ITS - Core Business Systems Development & Support



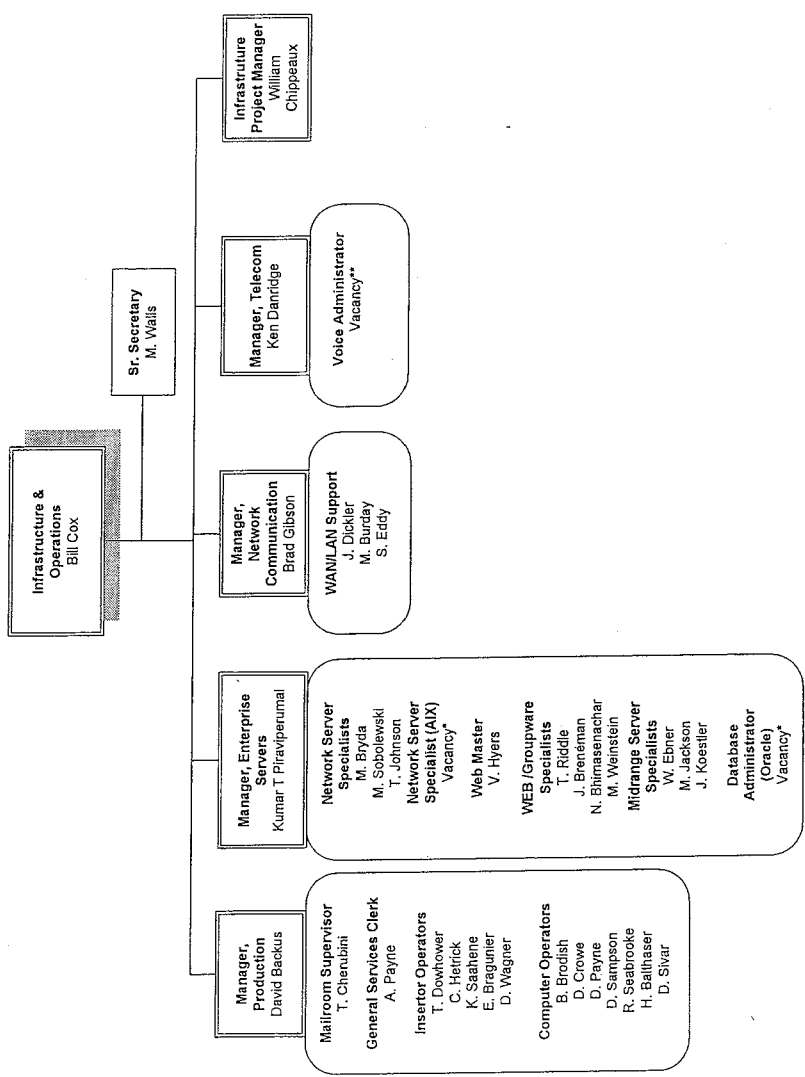
\* Posted on May 5th



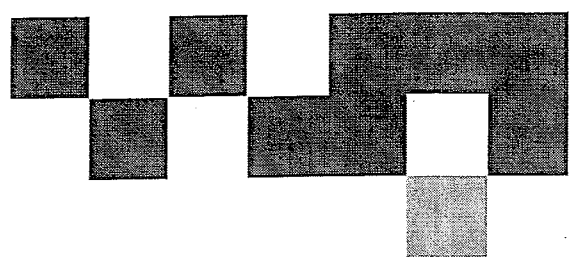




# ITS - Infrastructure & Operations

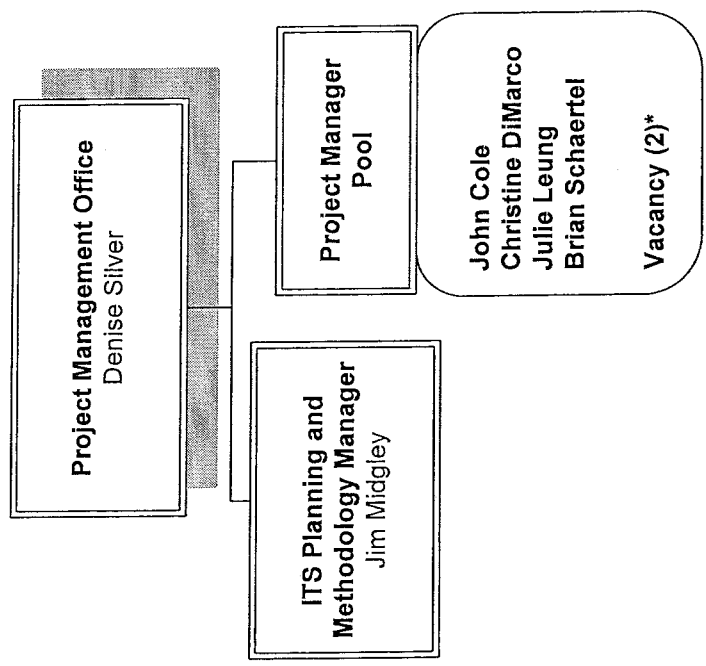


\* Posted on May 8th  
\*\* Previously Posted

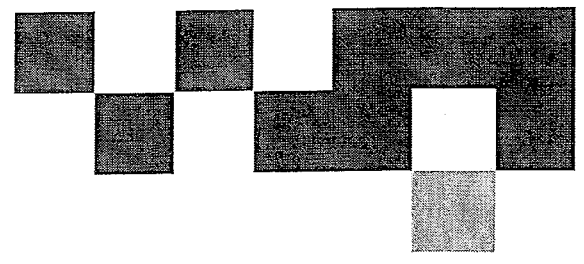




# ITS - Project Management

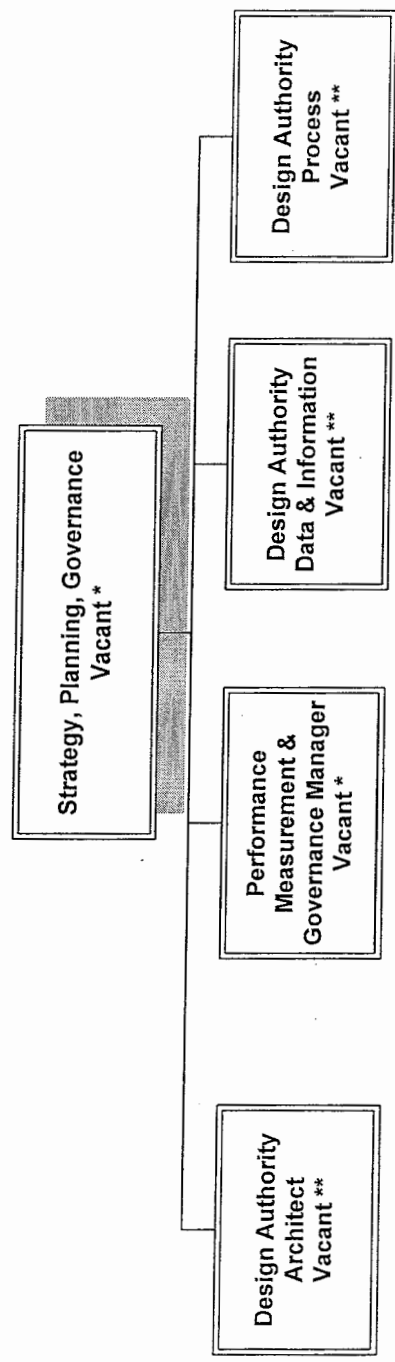


\* Posted on May 5th

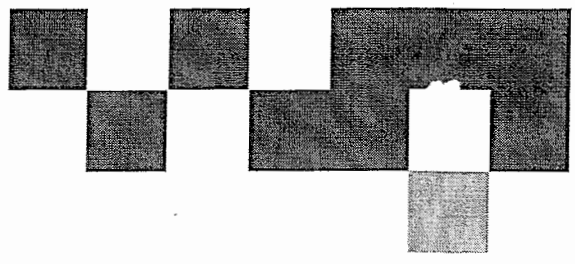




# ITS – Strategy, Planning & Governance



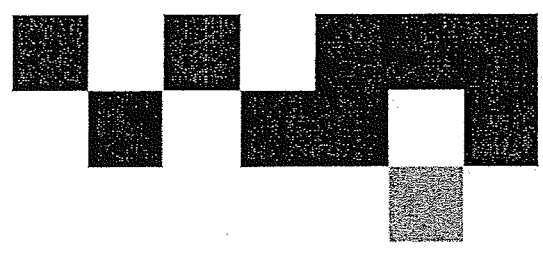
\* Posted on May 5th  
\*\* Previously posted on April 28th & reposted on May 5th



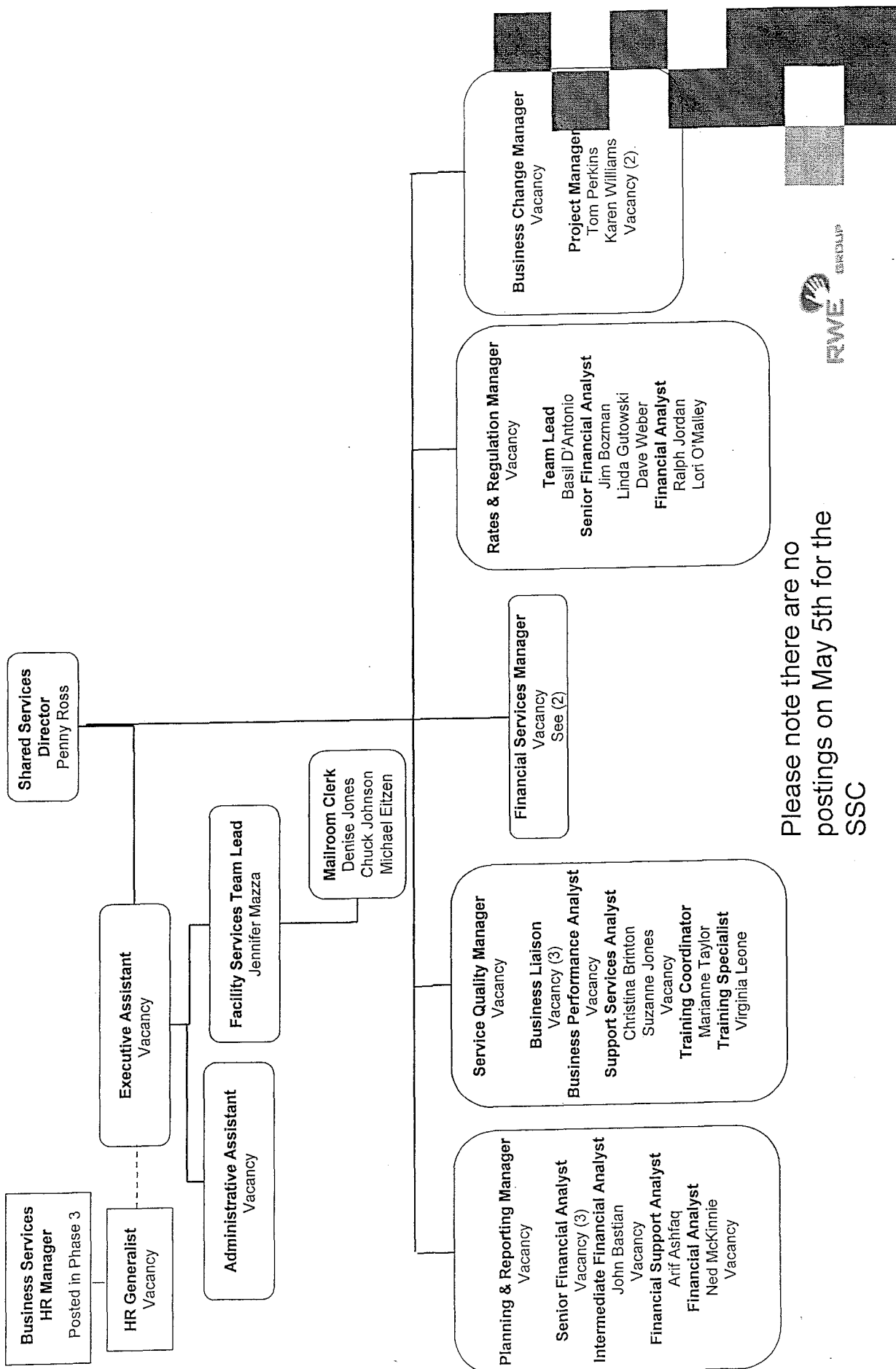


# 1. Shared Financial Services

## Shared Services Center



# Shared Services Center (1)

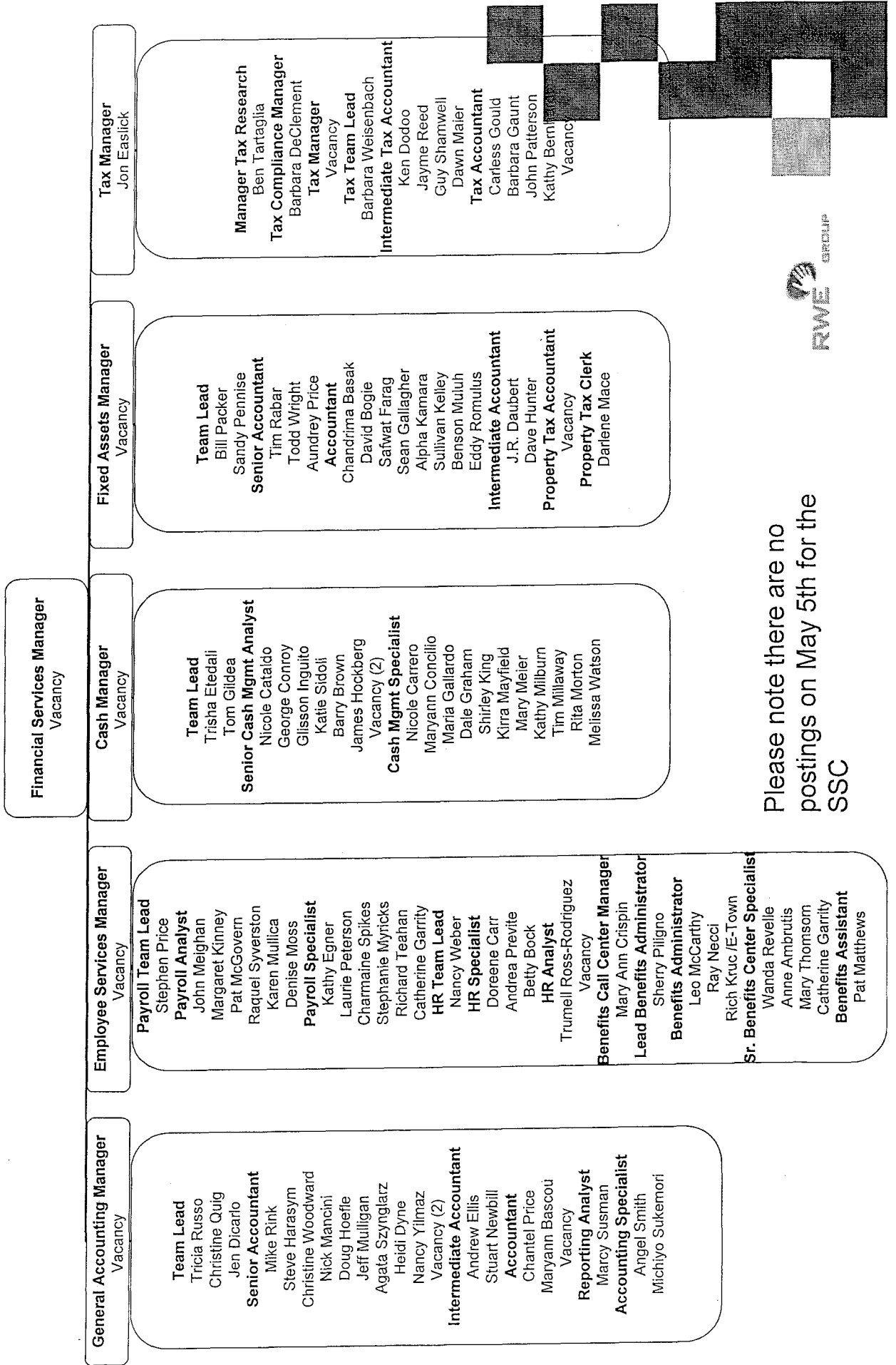


Please note there are no postings on May 5th for the SSC





# Shared Services Center (2)

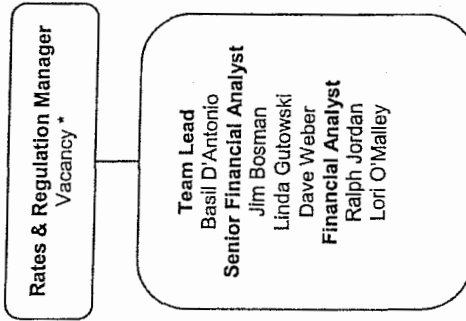


Please note there are no  
postings on May 5th for the  
SSC

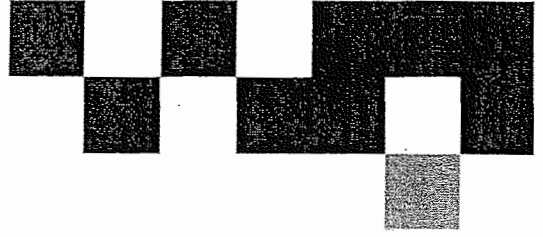


# CUSTOMER & SHARED BUSINESS SERVICES

Shared Services Center (5)

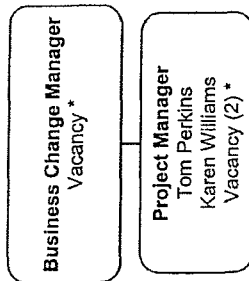


\* Posted on April 28<sup>th</sup>

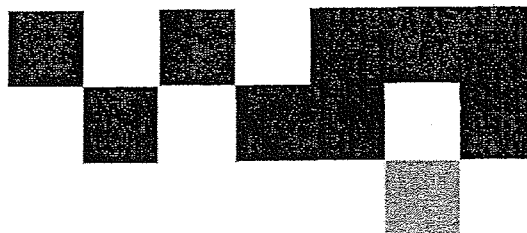


# CUSTOMER & SHARED BUSINESS SERVICES

Shared Services Center (6)



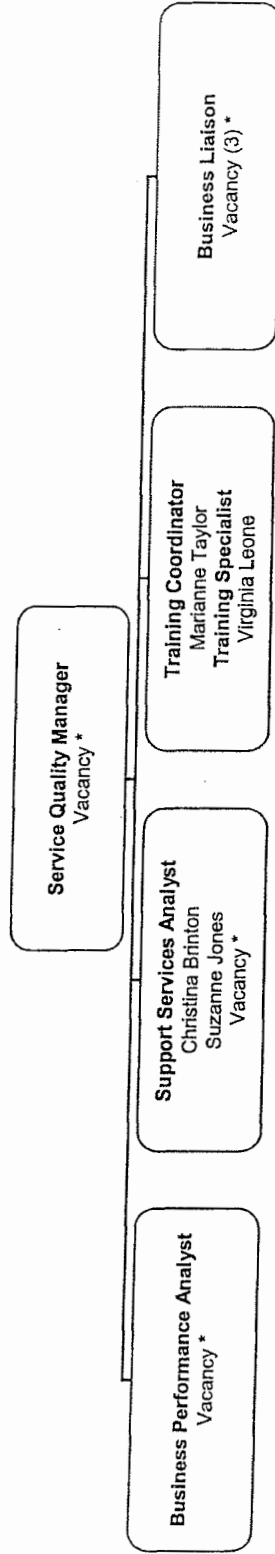
\* Posted on April 28<sup>th</sup>





# CUSTOMER & SHARED BUSINESS SERVICES

Shared Services Center (4)



\* Posted on April 28th

