

Attachment 1

-----Original Message-----

From: Change.Control@bridge.bellsouth.com
[mailto:Change.Control@bridge.bellsouth.com]

Sent: Monday, December 10, 2001 4:44 PM

To: Alan.Flanigan@twtelecom.com; alee@epicus.com;
alejandro@amexcomm.com; amanda.hill@wcom.com; Annette.Cook@espire.net;
annettey@Lightyearcom.com; apatel3@telcordia.com;
Lynn.Arthur@BellSouth.com; avincent@communitytelephone.com;
bbil@4pra.com; BellSouth@quintessent.net; best2@surfsouth.com;
bethh@communitytelephone.com; beverly.lockwood@btitele.com;
billg@telcordia.com; bisinterfacecontrol@kpmg.com;
bmurdo@KMCTELECOM.com; Bob.Buerrosse@allegiancetelecom.com; Bobik,
Richard A, NCAM; Bradbury, Jay M, LGA; Brenda.Gant@KMCTELECOM.com;
Brent.McMahan@networktelephone.net; Seigler, Bernadette M (Bern), NCAM;
BStowe@City.marietta.GA.US; bszafran@covad.com; bwellman@idstelcom.com;
c-david.burley@wcom.com; c-Lorraine.Watson@wcom.com;

c_and_m@bellsouth.net; caren.schaffner@wcom.com; CAshford@birch.com;
cassandrap@networktelephone.net; Catherine.Gray@alltel.com;
cbnaadmin@home.com; cchiavatti@usatelecominc.com; Iacovelli, Christopher
D, NLCIO; CDrake@City.marietta.GA.US; Cecere.Chris@broadband.att.com;
cecilia.ortiz@adelphiacom.com; Cedric.Cox@wcom.com; cflanigan@uslec.com;
changecontrol.bellsouth@onepointcom.com; Chapmanwe@cepb.com;
charles.a.stahlberger@xo.com; charrison@mpowercom.com;
chaynes@trivergent.com; cheryl@eatel.com;
cheryl_acosta@stratosoilandgas.com; chrisg@pvtel.net;
Christine.Schnelle@wcom.com; christine.shelton@cc.gte.com;
clarson@dset.com; clhawk@KMCTELECOM.com; CoDavis@covad.com;
colleen.e.sponseller@wcom.com; Connie@albionconnect.com;
Connie.Nathan@KMCTELECOM.com; conniec@arrowcom.com; Craig@excleron.com;
Craig.B.Douglas@MCI.com; CSoptic@birch.com; csti@bellsouth.net;
daddymax@netbci.com; daisy.ling@wcom.com; DDougherty@birch.com;
Debra.Pasquale@btitele.com; default.user@BellSouth.com;
DElliott@connectsouth.com; desiree@communitytelephone.com;
dfoust@deltacom.com; dgraham@mantiss.com; dkane@aspiretelecom.com;
dmcmanus@trivergent.com; DNapovanice@birch.com; DoBeck@MediaOne.com;
don@amexcomm.com; donna.poe@knology.com; donnas@intetech.com;
Doreen.E.Raia@wcom.com; dpetry@ix.netcom.com; Dwight.Scrivener@wcom.com;
dwilliams@nowcommunications.com; ed.ramsden@cc.gte.com;
EFarnell@broadband.att.com; EGunn@birch.com; Ellen.Neis@mail.sprint.com;
Elliot.Wrann@dsl.net; eodell@dset.com; epadfield@nextlink.com;
ESaeed@northpoint.net; ESingleton@eztalktelephone.com;
evdoty@nextlink.com; eyu@talk.com; Faye.Restaino@dsl.net;
fjohnson@covad.com; fouts@communitytelephone.com; frankb@cellone-ms.com;
Fred.Brigham@wcom.com; Gary@CSII.net; generalg@cris.com;
gerrig@Lightyearcom.com; Glenn.Sonnier@usunwired.com;
gmelvin@trivergent.com; gulfcoast@dotstar.net;
Hwhittington@mpowercom.com; jamesk@onisn.net; jayala@rhythms.net;
jbritton@phonesforall.com; Jdavid4715@aol.com; JDuffey@PSC.STATE.FL.US;
Jeff.Walker@accesscomm.com; Jennifers@universaltelecominc.com;
jfuller@fairpoint.com; JG6837@ctmail.snet.com; jhoze@KMCTELECOM.com;
jim.lee@dsl.net; Jim.Meyers@wcom.com; jjohnson@idstelcom.com;
jmclau@KMCTELECOM.com; JMMaxwell@Intermedia.com;
JoanC@networktelephone.net; JOliver@birch.com; jose.aguilar@btitele.com;
jshields@globalc-inc.com; JtWilson2@att.com; jwengert@newsouth.com;
jwilwerding@birch.com; KAnderson@nwp.com; karen.grim@mail.sprint.com;
karind@covad.com; kathryn_hinds@globalcrossing.com;
Kathryn.Phipps@btitele.com; kcooper@EFTIA.com; Kevin@albionconnect.com;
KGillette-Hoskins@quintessent.net; khudson@nextlink.com;
Kimberly.O.Williams@MCI.com; KKester@STIS.com; kmarshall@telstar.org;
kmiller@northpointcom.com; KPollard@birch.com; kschwart@covad.com;
Timmons, King C (K.C.), NCAM; ktrygges@covad.com;
KUchida@northpoint.net; Kyle.Kopytchak@networktelephone.net;
launch-now.notify@cscoe.accenture.com; lavemek@arrowcom.com;
LCamillo@nwp.com; l davidov@dset.com; len.chandler@btitele.com;
LHamlin@birch.com; LHinton@PrismCSI.net; lijohnso@covad.com;
linda@networkonecom.com; lindak@communitytelephone.com; lisa@annox.com;
Lminasola@MediaOne.com; Lorraine.Watson@wcom.com; lortega@commsouth.net;
lynn@mf.n.net; lynnj@nowcommunications.com; Mandy.S.Jenkins@alltel.com;
mark@annox.com; Mark.Mecca@dsl.net; marybethkeane@kpmg.com;
MatthewBaker@nwp.com; mcbrunnhilde@juno.com; mchappell@kpmg.com;
MConnolly@birch.com; mconquest@itcdeltacom.com;
mdominick@trivergent.com; mer@networkwcs.com; MGimmi@nuvox.com;
michael.dekorte@Lightyearcom.com; Micki.Jones@wcom.com;
microsun@bellsouth.net; mkennedy@newsouth.com; mmclaughlin@dset.com;
MPatyk@connectsouth.com; msykes@telcordia.com; mt7210@momail.sbc.com;
MWagner@birch.com; Nancy.Watt@RHTelCo.com;
Natalie.Franklin@KMCTELECOM.com; NDreier@birch.com;
Nicole.Moorman@adelphiacom.com; nmunsie@commsouth.net;

NStuckey@birch.com; PBarker@aol.com; rBohn@MediaOne.com;
Pkinghorn@eztalktelephone.com; pmckay@momentumbusiness.com;
PPinick@birch.com; prehm@nightfire.com; prichardson@trivergent.com;
PRubino@Z-TEL.com; Quan.Nguyen@KMCTELECOM.com; Rae.Couvillion@wcom.com;
rbennett@floridadigital.net; rbreckin@telcordia.com;
rbuffa@interloop.net; rcostanzo@velocityky.com; Rdupraw@mpowercom.com;
Renee.Clark@espire.net; Renee.Clift@dsl.net; reym@networktelephone.net;
rharsila@commsouth.net; rhonda.calvert@adelpiacom.com;
Rick.Whisamore@wcom.com; rjohnson@epicus.com;
robert@alternativephone.com; Ronald.Klamer@wcom.com;
rturkel@broadriver.com; ruth@mfn.net; RWilson@City.marietta.GA.US;
sandra.kahl@wcom.com; Sandraj@intetech.com; sbowling@caprock.com;
SchubertJ@birch.com; schula.hobbs@dsl.net; Scott.Hibbard@wcom.com;
SELAZER@talk.com; shane@eatel.com; shannon.smith@itchold.com;
sharon.arnett@mail.sprint.com; Sherry.Lichtenberg@wcom.com;
Shirley.Roberts@KMCTELECOM.com; SLively@trivergent.com;
smason@interloop.net; smoore@trivergent.com; snole@kpmg.com;
srober@KMCTELECOM.com; SStapler@itcdeltacom.com; SSullivan@nwp.com;
Stacia.Edwards@KMCTELECOM.com; Steve.Filliaux@btitele.com;
Steve.Moore@mail.sprint.com; steve.sulak@nowcommunications.com;
steve.taff@allegiancetelecom.com; susan.sherfey@btitele.com;
svc-gate@telcordia.com; swargo@rhythms.net; talleylinda@mindspring.com;
tami.m.swenson@accenture.com; Tanya.Finney@espire.net;
Tara.Odems@allegiancetelecom.com; TAYLORJG@LCI.COM; taziz@epicus.com;
tfry@commsouth.net; Tim@excleron.com; timw@networkonecom.com;
Travis.Tindal@om1.al.bst.bls.com; TJStokes@trivergent.com;
Tlescudero@idstel.com; tmontemayer@mantiss.com; tntel@bellsouth.net;
Todd@CSIl.net; tom.hyde@Cbeyond.net; tonyam@communitytelephone.com;
trsmith@trivergent.com; ts1336@sbc.com; TTompson2@broadband.att.com;
Tyra.Hush@wcom.com; usfloridaoss@kpmg.com;
valarie_reck@globalcrossing.com; wendy.hernandez@comporium.com;
WFletcher@birch.com; wmknapek@Intermedia.com; wolfsbrg@cris.com;
Yvette.Brown@espire.net; Zachary.Baudoin@KMCTELECOM.com;
bellsouth@nightfire.com; Cain, Donna, NCAM; cschneider@concretio.com;
Lianne.Griffin@BellSouth.com; ssarem@mpowercom.com;
pwilson@mpowercom.com; Debbie.Timmons@om1.al.bst.bls.com;
Bill.York@wcom.com; donaldsond@epb.net; jason@basicphone.org;
jerry.hill@accesscomm.com; scott.emener@accesscomm.com;
kcaudill@idstel.com; BSNotes@talk.com; Nancy.Welsh@espire.net;
tagteam@telexcelpartners.com; james.d.tomlinson@xo.com;
Jeannie.Seguina@adelphia.com; SCook@City.marietta.GA.US;
dnathanson@natelcomm.com; Mary.I.Mitchell@xo.com; LWysocki@nwp.com;
joanne.baxter@networktelephone.net; tim.koontz@networktelephone.net;
Debbie.Steen@om1.al.bst.bls.com
Subject: ID: Response to AT&T RE: TAG API 7.7 - Release 10.3 & New
Pre-Order Business Rules

Bernadette,

This is in response to your email regarding Pre-order business rules for
Parsed

CSR. As we discussed in our meeting this morning, the **Pre-order business**
rules

will be updated & posted to the web by no later than **12/17/01**. As
committed,

the **Parsed CSR Question & Answer Log** will also be updated and provided to
the

CLEC community by no later than Wednesday, 12/12/01 morning (the Project
Manager will provide to Change Control by COB on Tuesday, 12/11/01).

Once the updated Pre-Order business rules are posted, CLECs should provide

Change Control with the following information:

- any questions/issues with the pre-order business rules
- length of time needed before testing can begin
- if there is a need for a follow-up meeting

Please let us know if you have questions.

Thanks,

Change Management Team

_____ Distributed Message _____

Message sent by: Change Control /m6,mail6a

To unsubscribe from CCP, send a message to
list.manager@bridge.bellsouth.com with the Subject line: UNSUBSCRIBE CCP

For online help, send a message with the subject HELP.

From: Seigler, Bernadette M (Bern) - NCAM [bseigler@att.com]
Sent: Monday, December 10, 2001 5:05 PM
To: Change.Control@bridge.bellsouth.com; Alan.Flanigan@twtelecom.com; alee@epicus.com; alejandro@amexcomm.com; amanda.hill@wcom.com; Annette.Cook@espire.net; annettey@Lightyearcom.com; apatel3@telcordia.com; Lynn.Arthur@BellSouth.com; avincent@communitytelephone.com; bbil@4pra.com; BellSouth@quintessent.net; best2@surfsouth.com; bethh@communitytelephone.com; beverly.lockwood@btitele.com; billg@telcordia.com; blsinterfacecontrol@kpmg.com; bmurdo@KMCTELECOM.com; Bob.Buerrosse@allegiancetelecom.com; Bobik, Richard A - NCAM; Bradbury, Jay M - LGA; Brenda.Gant@KMCTELECOM.com; Brent.McMahan@networktelephone.net; BStowe@City.marietta.GA.US; bszafran@covad.com; bwellman@idstelcom.com; c-david.burley@wcom.com; c-Lorraine.Watson@wcom.com; c_and_m@bellsouth.net; caren.schaffner@wcom.com; CAshford@birch.com; cassandrap@networktelephone.net; Catherine.Gray@alltel.com; cbnaadmin@home.com; cchiavatti@usatelecominc.com; iacovelli, Christopher D - ALINF; CDrake@City.marietta.GA.US; Cecere, Chris - Broadband; cecilia.ortiz@adelphiacom.com; Cedric.Cox@wcom.com; cflanigan@uslec.com; changecontrol.bellsouth@onepointcom.com; Chapmanwe@cep.com; charles.a.stahlberger@xo.com; charison@mpowercom.com; chaynes@trivergent.com; cheryl@eatel.com; cheryl_acosta@stratosoilandgas.com; chrisg@pvitel.net; Christine.Schnelle@wcom.com; christine.shelton@cc.gte.com; clarson@dset.com; cihawk@KMCTELECOM.com; CoDavis@covad.com; colleen.e.sponseller@wcom.com; Connie@albionconnect.com; Connie.Nathan@KMCTELECOM.com; conniec@arrowcom.com; Craig@exceleron.com; Craig.B.Douglas@MCI.com; CSoptic@birch.com; csti@bellsouth.net; daddymax@netbci.com; daisy.ling@wcom.com; DDougherty@birch.com; Debra.Pasquale@btitele.com; default.user@BellSouth.com; DElliott@connectsouth.com; desiree@communitytelephone.com; dfoust@deltacom.com; dgraham@mantiss.com; dkane@aspiretelecom.com; dmcmanus@trivergent.com; DNapovanice@birch.com; DoBeck@MediaOne.com; don@amexcomm.com; donna.poe@knology.com; donnas@intetech.com; Doreen.E.Raia@wcom.com; dpetry@ix.netcom.com; Dwight.Scrivener@wcom.com; dwilliams@nowcommunications.com; ed.ramsden@cc.gte.com; EFarnell@broadband.att.com; EGunn@birch.com; Ellen.Neis@mail.sprint.com; Elliot.Wrann@dsl.net; eodell@dset.com; epadfield@nextlink.com; Saeed, Emelina M - NLNS; ESingleton@eztalktelephone.com; evdoty@nextlink.com; eyu@talk.com; Faye.Restaino@dsl.net; fjohnson@covad.com; fouts@communitytelephone.com; frankb@cellone-ms.com; Fred.Brigham@wcom.com; Gary@CSII.net; generalg@cris.com; gerrig@Lightyearcom.com; Glenn.Sonnier@usunwired.com; gmelvin@trivergent.com; gulfcoast@dotstar.net; Hwhittington@mpowercom.com; jamesk@onisn.net; jayala@rhythms.net; jbritton@phonesforall.com; Jdavid4715@aol.com; JDuffey@PSC.STATE.FL.US; Jeff.Walker@accesscomm.com; Jennifers@universaltelecominc.com; jfuller@fairpoint.com; JG6837@ctmail.snet.com; jhoze@KMCTELECOM.com; jim.lee@dsl.net; Jim.Meyers@wcom.com; jjohnson@idstelcom.com; jmclau@KMCTELECOM.com; JMMaxwell@Intermedia.com; JoanC@networktelephone.net; JOliver@birch.com; jose.aguilar@btitele.com; jshields@globalc-inc.com; JtWilson2@att.com; jwengert@newsouth.com; jwilwerding@birch.com; KAnderson@nwp.com; karen.grim@mail.sprint.com; karind@covad.com; kathryn_hinds@globalcrossing.com; Kathryn.Phipps@btitele.com; kcooper@EFTIA.com; Kevin@albionconnect.com; KGillette-Hoskins@quintessent.net; khudson@nextlink.com; Kimberly.O.Williams@MCI.com; KKester@STIS.com; kmarshall@telstar.org; kmiller@northpointcom.com; KPollard@birch.com; kschwartz@covad.com; Timmons, King C (K.C.) - NCAM; ktrygges@covad.com; Uchida, Karen - NLNS; Kyle.Kopytchak@networktelephone.net; launch-now.notify@cscoe.accenture.com; lavernek@arrowcom.com; Lcamillo@nwp.com; ldavidov@dset.com; len.chandler@btitele.com; LHamlin@birch.com; LHinton@PrismCSI.net; lijohnso@covad.com; linda@networkonecom.com; lindak@communitytelephone.com; lisa@annox.com; Lminasola@MediaOne.com; Lorraine.Watson@wcom.com; lortega@commsouth.net; lynn@mfnet.net; lynnj@nowcommunications.com; Mandy.S.Jenkins@alltel.com; mark@annox.com; Mark.Mecca@dsl.net; marybethkeane@kpmg.com; MatthewBaker@nwp.com; mcbrunnhilde@juno.com; mchappell@kpmg.com; MConnolly@birch.com; mconquest@itcdeltacom.com; mdominick@trivergent.com; mer@networkwcs.com; MGimmi@nuvox.com; michael.dekorte@Lightyearcom.com; Micki.Jones@wcom.com; microsun@bellsouth.net; mkennedy@newsouth.com; mmclaughlin@dset.com;

To: MPatyk@connectsouth.com; msykes@telcordia.com; mt110@momail.sbc.com;
MWagner@birch.com; Nancy.Watt@RHTelCo.com; Natalie.Franklin@KMCTELECOM.com;
NDreier@birch.com; Nicole.Moorman@adelphiacom.com; nmunsie@commsouth.net;
NStuckey@birch.com; PBarker@aol.com; PBohn@MediaOne.com;
Pkinghorn@eztalktelephone.com; pmckay@momentumbusiness.com; PPinick@birch.com;
prehm@nightfire.com; prichardson@trivergent.com; PRubino@Z-TEL.com;
Quan.Nguyen@KMCTELECOM.com; Rae.Couvillion@wcom.com; rbennett@floridadigital.net;
rbreckin@telcordia.com; rbuffa@interloop.net; rcostanzo@velocityky.com;
Rdupraw@mpowercom.com; Renee.Clark@espire.net; Renee.Clift@dsl.net;
reym@networktelephone.net; rharsila@commsouth.net; rhonda.caivert@adelphiacom.com;
Rick.Whisamore@wcom.com; rjohnson@epicus.com; robert@alternativephone.com;
Ronald.Klamer@wcom.com; rturkel@broadriver.com; ruth@mfnet.net;
RWilson@City.marietta.GA.US; sandra.k.evans@mail.sprint.com; sandra.kahl@wcom.com;
Sandrajf@intetech.com; sbowling@caprock.com; SchubertJ@birch.com; schula.hobbs@dsl.net;
Scott.Hibbard@wcom.com; SELEAZER@talk.com; shane@eatel.com; shannon.smith@itchohold.com;
sharon.arnett@mail.sprint.com; Sherry.Lichtenberg@wcom.com;
Shirley.Roberts@KMCTELECOM.com; SLively@trivergent.com; smason@interloop.net;
smoore@trivergent.com; snole@kpmg.com; srober@KMCTELECOM.com;
SStapler@itcdeltacom.com; SSullivan@nwp.com; Stacia.Edwards@KMCTELECOM.com;
Steve.Filliaux@btitele.com; Steve.Moore@mail.sprint.com; steve.sulak@nowcommunications.com;
steve.taff@allegiancetelecom.com; susan.sherfey@btitele.com; svc-gate@telcordia.com;
swargo@rhythms.net; talleylinda@mindspring.com; tami.m.swenson@accenture.com;
Tanya.Finney@espire.net; Tara.Odems@allegiancetelecom.com; TAYLORJG@LCI.COM;
taziz@epicus.com; tfry@commsouth.net; Tim@excleron.com; timw@networkonecom.com;
Travis.Tindal@bridge.bellsouth.com; TJStokes@trivergent.com; Tlescudero@idstelcom.com;
tmontemayer@mantiss.com; tntel@bellsouth.net; Todd@CSII.net; tom.hyde@Cbeyond.net;
tonyam@communitytelephone.com; trsmith@trivergent.com; ts1336@sbc.com; TThompson2
@broadband.att.com; Tyra.Hush@wcom.com; usfloridaoss@kpmg.com;
valarie_reck@globalcrossing.com; wendy.hernandez@comporium.com; WFletcher@birch.com;
wmknapek@intermedia.com; wolfsbrg@cris.com; Yvette.Brown@espire.net;
Zachary.Baudoin@KMCTELECOM.com; bellsouth@nightfire.com; Cain, Donna - NCAM;
cschneider@concretio.com; Lianne.Griffin@BellSouth.com; ssarem@mpowercom.com;
pwillson@mpowercom.com; Debbie.Timmons@bridge.bellsouth.com; Bill.York@wcom.com;
donaldsond@epb.net; jason@basicphone.org; jerry.hill@accesscomm.com;
scott.emener@accesscomm.com; kcaudill@idstelcom.com; BSNotes@talk.com;
Nancy.Welsh@espire.net; tagteam@telexcelpartners.com; james.d.tomlinson@xo.com;
Jeannie.Seguina@adelphia.com; SCook@City.marietta.GA.US; dnathanson@natelcomm.com;
Mary.I.Mitchell@xo.com; LWysocki@nwp.com; joanne.baxter@networktelephone.net
Subject: RE: TAG API 7.7 - Release 10.3 & New Pre-Order Business Rules

BCCM:

This latest version TAG API does not address any of the issues AT&T raised.

Also AT&T is still waiting to see new Pre-Order Business Rules to be published that address Parsed CSR. When will these rules be provided?

Bernadette Seigler
District Manager
AT&T Local Services & Access Management
So. Region OSS Interconnection
V: 404-810-8956
F: 404-810-8605
Pager: 888-858-7243 Pin: 125159

-----Original Message-----

From: Change.Control@bridge.bellsouth.com
[mailto:Change.Control@bridge.bellsouth.com]
Sent: Tuesday, December 04, 2001 5:29 PM
To: Alan.Flanigan@twtelecom.com; alee@epicus.com;

alajandro@amexcomm.com; amanda.hill@wcom.com; Annette.Cook@espire.net;
annettey@Lightyearcom.com; apatel3@telcordia.com;
Lynn.Arthur@BellSouth.com; avincent@communitytelephone.com;
bbil@4pra.com; BellSouth@quintessent.net; best2@surfsouth.com;
bethh@communitytelephone.com; beverly.lockwood@btitele.com;
billg@telcordia.com; blsinterfacecontrol@kpmg.com;
bmurdo@KMCTELECOM.com; Bob.Buerrosse@allegiancetelecom.com; Bobik,
Richard A, NCAM; Bradbury, Jay M, LGA; Brenda.Gant@KMCTELECOM.com;
Brent.McMahan@networktelephone.net; Seigler, Bernadette M (Bern), NCAM;
BStowe@City.marietta.GA.US; bszafran@covad.com; bwellman@idstelcom.com;
c-david.burley@wcom.com; c-Lorraine.Watson@wcom.com;
c_and_m@bellsouth.net; caren.schaffner@wcom.com; CAshford@birch.com;
cassandrap@networktelephone.net; Catherine.Gray@alltel.com;
cbnaadmin@home.com; cchiavatti@usatelecominc.com; lacovelli, Christopher
D, NLCIO; CDrake@City.marietta.GA.US; Cecere.Chris@broadband.att.com;
cecilia.ortiz@adelphiacom.com; Cedric.Cox@wcom.com; cflanigan@uslec.com;
changecontrol.bellsouth@onepointcom.com; Chapmanwe@cepb.com;
charles.a.stahlberger@xo.com; charrison@mpowercom.com;
chaynes@trivergent.com; cheryl@eatel.com;
cheryl_acosta@stratosoilandgas.com; chrisg@pvtel.net;
Christine.Schnelle@wcom.com; christine.shelton@cc.gte.com;
clarson@dset.com; clhawk@KMCTELECOM.com; CoDavis@covad.com;
colleen.e.sponseller@wcom.com; Connie@albionconnect.com;
Connie.Nathan@KMCTELECOM.com; conniec@arrowcom.com; Craig@exceleron.com;
Craig.B.Douglas@MCI.com; CSoptic@birch.com; csti@bellsouth.net;
daddymax@netbci.com; daisy.ling@wcom.com; DDougherty@birch.com;
Debra.Pasquale@btitele.com; default.user@BellSouth.com;
DElliott@connectsouth.com; desiree@communitytelephone.com;
dfoust@deltacom.com; dgraham@mantiss.com; dkane@aspiretelecom.com;
dmcmamus@trivergent.com; DNapovanice@birch.com; DoBeck@MediaOne.com;
don@amexcomm.com; donna.poe@knology.com; donnas@intetech.com;
Doreen.E.Raia@wcom.com; dpetry@ix.netcom.com; Dwight.Scrivener@wcom.com;
dwilliams@nowcommunications.com; ed.ramsden@cc.gte.com;
EFarnell@broadband.att.com; EGunn@birch.com; Ellen.Neis@mail.sprint.com;
Elliot.Wrann@dsl.net; eodell@dset.com; epadfield@nextlink.com;
ESaeed@northpoint.net; ESingleton@eztalktelephone.com;
evdoty@nextlink.com; eyu@talk.com; Faye.Restaino@dsl.net;
fjohnson@covad.com; fouts@communitytelephone.com; frankb@cellone-ms.com;
Fred.Brigham@wcom.com; Gary@CSII.net; generalg@cris.com;
gerrig@Lightyearcom.com; Glenn.Sonnier@usunwired.com;
gmelvin@trivergent.com; gulfcoast@dotstar.net;
Hwhittington@mpowercom.com; jamesk@onisn.net; jayala@rhythms.net;
jbritton@phonesforall.com; Jdavid4715@aol.com; JDuffey@PSC.STATE.FL.US;
Jeff.Walker@accesscomm.com; Jennifers@universaltelecominc.com;
jfuller@fairpoint.com; JG6837@ctmail.snet.com; jhoze@KMCTELECOM.com;
jim.lee@dsl.net; Jim.Meyers@wcom.com; jjohnson@idstelcom.com;
jmclau@KMCTELECOM.com; JMMaxwell@Intermedia.com;
JoanC@networktelephone.net; JOliver@birch.com; jose.aguilar@btitele.com;
jshields@globalc-inc.com; JtWilson2@att.com; jwengert@newsouth.com;
jwilwerding@birch.com; KAnderson@nwp.com; karen.grim@mail.sprint.com;
karind@covad.com; kathryn_hinds@globalcrossing.com;
Kathryn.Phipps@btitele.com; kcooper@EFTIA.com; Kevin@albionconnect.com;
KGillette-Hoskins@quintessent.net; khudson@nextlink.com;
Kimberly.O.Williams@MCI.com; KKester@STIS.com; kmarshall@telstar.org;
kmiller@northpointcom.com; KPollard@birch.com; kschwartz@covad.com;
Timmons, King C (K.C.), NCAM; ktrygges@covad.com;
KUchida@northpoint.net; Kyle.Kopytchak@networktelephone.net;
launch-now.notify@cscocoe.accenture.com; lavernek@arrowcom.com;
LCamillo@nwp.com; ldavidov@dset.com; len.chandler@btitele.com;
LHamlin@birch.com; LHinton@PrismCSI.net; lijohnso@covad.com;
linda@networkonecom.com; lindak@communitytelephone.com; lisa@annox.com;
Lminasola@MediaOne.com; Lorraine.Watson@wcom.com; lortega@commsouth.net;

lynn@mfn.net; lynnj@nowcommunications.com; Mandy.S.Jenkins@alltel.com;
mark@annox.com; Mark.Mecca@dsl.net; marybethkeane@kpmg.com;
MatthewBaker@nwp.com; mcbrunnhilde@juno.com; mchappell@kpmg.com;
MConnolly@birch.com; mconquest@itcdeltacom.com;
mdominick@trivergent.com; mer@networkwcs.com; MGimmi@nuvox.com;
michael.dekorte@Lightyearcom.com; Micki.Jones@wcom.com;
microsun@bellsouth.net; mkennedy@newsouth.com; mmclaughlin@dset.com;
MPatyk@connectsouth.com; msykes@telcordia.com; mt7210@momail.sbc.com;
MWagner@birch.com; Nancy.Watt@RHTelCo.com;
Natalie.Franklin@KMCTELECOM.com; NDreier@birch.com;
Nicole.Moorman@adelphiacom.com; nmunsie@commsouth.net;
NStuckey@birch.com; PBarker@aol.com; PBohn@MediaOne.com;
Pkinghorn@eztalktelephone.com; pmckay@momentumbusiness.com;
PPinick@birch.com; prehm@nightfire.com; prichardson@trivergent.com;
PRubino@Z-TEL.com; Quan.Nguyen@KMCTELECOM.com; Rae.Couvillion@wcom.com;
rbennett@floridadigital.net; rbreckin@telcordia.com;
rbuffa@interloop.net; rcostanzo@velocityky.com; Rdupraw@mpowercom.com;
Renee.Clark@espire.net; Renee.Clift@dsl.net; reym@networktelephone.net;
rharsila@commsouth.net; rhonda.calvert@adelphiacom.com;
Rick.Whisamore@wcom.com; rjohnson@epicus.com;
robert@alternativephone.com; Ronald.Klamer@wcom.com;
rturkel@broadriver.com; ruth@mfn.net; RWilson@City.marietta.GA.US;
sandra.k.evans@mail.sprint.com; sandra.kahl@wcom.com;
Sandrajf@intetech.com; sbowling@caprock.com; SchubertJ@birch.com;
schula.hobbs@dsl.net; Scott.Hibbard@wcom.com; SELEAZER@talk.com;
shane@eatel.com; shannon.smith@itchold.com;
sharon.arnett@mail.sprint.com; Sherry.Lichtenberg@wcom.com;
Shirley.Roberts@KMCTELECOM.com; SLively@trivergent.com;
smason@interloop.net; smoore@trivergent.com; snole@kpmg.com;
srober@KMCTELECOM.com; SStapler@itcdeltacom.com; SSullivan@nwp.com;
Stacia.Edwards@KMCTELECOM.com; Steve.Filliaux@btitele.com;
Steve.Moore@mail.sprint.com; steve.sulak@nowcommunications.com;
steve.taff@allegiancetelecom.com; susan.sherfey@btitele.com;
svc-gate@telcordia.com; swargo@rhythms.net; talleylinda@mindspring.com;
tami.m.swenson@accenture.com; Tanya.Finney@espire.net;
Tara.Odems@allegiancetelecom.com; TAYLORJG@LCI.COM; taziz@epicus.com;
tfry@commsouth.net; Tim@excleron.com; timw@networkonecom.com;
Travis.Tindal@om1.al.bst.bls.com; TJStokes@trivergent.com;
Tlescudero@idstelcom.com; tmontemayer@mantiss.com; tntel@bellsouth.net;
Todd@CSII.net; tom.hyde@Cbeyond.net; tonyam@communitytelephone.com;
trsmith@trivergent.com; ts1336@sbc.com; TThompson2@broadband.att.com;
Tyra.Hush@wcom.com; usfloridaoss@kpmg.com;
valarie_reck@globalcrossing.com; wendy.hernandez@comporium.com;
WFletcher@birch.com; wmknapek@Intermedia.com; wolfsbrg@cris.com;
Yvette.Brown@espire.net; Zachary.Baudoin@KMCTELECOM.com;
bellsouth@nightfire.com; Cain, Donna, NCAM; cschneider@concretio.com;
Lianne.Griffin@BellSouth.com; ssarem@mpowercom.com;
pwilson@mpowercom.com; Debbie.Timmons@om1.al.bst.bls.com;
Bill.York@wcom.com; donaldsond@epb.net; jason@basicphone.org;
jerry.hill@accesscomm.com; scott.emener@accesscomm.com;
kcaudill@idstelcom.com; BSNotes@talk.com; Nancy.Welsh@espire.net;
tagteam@telexcelpartners.com; james.d.tomlinson@xo.com;
Jeannie.Seguina@adelphia.com; SCook@City.marietta.GA.US;
dnathanson@natelcomm.com; Mary.I.Mitchell@xo.com; LWysocki@nwp.com;
joanne.baxter@networktelephone.net
Subject: ID: TAG API 7.7 - Release 10.3

Attention TAG CLECs,

The Change Management Team has been informed that the complete TAG API 7.7 (Version 0) was posted to the TAG secure web site on 11-19-01. If anyone

downloaded TAG API 7.7 prior to 11-19-01, please re-download to ensure you have the complete version.

Please let us know if you have questions.

Thanks,

Change Management Team

Distributed Message

Message sent by: Change Control /m6,mail6a

To unsubscribe from CCP, send a message to
list.manager@bridge.bellsouth.com with the Subject line: UNSUBSCRIBE CCP

For online help, send a message with the subject HELP.

Attachment 2

**Parsed CSR Queries
Update**

| Item | Date | CLEC | Query | Date | BST Response | NOTES |
|-------------|-------------|-------------|--|-------------|---|--------------|
| 001 | 9/17/01 | MCI/WCom | What are BST plans for providing this functionality via industry EDI and CORBA interface guidelines? | 9/19/01 | EDI interface does not offer pre-order. Parsed CSR will be offered via TAG, BST's CORBA interface. | |
| 002 | 9/17/01 | MCI/WCom | What are plans for upgrade to LSOG 5? Or will this version be a hybrid LSOG 4/5? Requirements document does not identify field usage, i.e., required, conditional, optional, prohibited, etc. | 9/19/01 | Parsed CSR will be offered in the most current version - LSOG 4. It will be available in LSOG 5 when implemented. | |
| 003 | 9/17/01 | MCI/WCom | Are field characteristics, i.e., alpha, numeric, alpha/numeric, and special between pre order identical to ordering requirements? | 9/19/01 | Data conversions made by CLECs wh placing data from the CSR on an LSR will still need to be considered by the CLEC. | |
| 004 | 9/17/01 | MCI/WCom | Requirements document does not identify field usage, i.e., required, conditional, optional, prohibited, etc. | 9/19/01 | The CSR is a reference document. | |
| 005 | 9/17/01 | MCI/WCom | Requirements document does not identify field lengths. | 9/19/01 | CSR fields differ from LSR fields. | |
| 006 | 9/17/01 | MCI/WCom | Are field names for Pre Order identical to Order when definition our general usage are the same? | 9/19/01 | Field names on CSR may be similar to those on the LSR. | |
| 007 | 9/17/01 | MCI/WCom | In many instances the requirements document does not identify valid values applicable for specific fields, e.g., SATH, CITY, STATE, LASS, LATH, LASS, LALOC, etc. Are pre order values received in these fields to be populated exactly as received (i.e., with case sensitivity applied) to order as received in pre order CSR transaction? | 9/19/01 | Consult the BellSouth Business Rules determine if data format for LSR. (See item 3) | |
| 008 | 9/17/01 | MCI/WCom | Are field values contained in Pre Order CSR response transaction identical to order initiation requirements? | 9/19/01 | Field values on CSR may be similar to those on the LSR. | |
| 009 | 9/17/01 | MCI/WCom | If the end user's listed and service address is identical, will both be parsed out in response transaction? What if they are not identical, will sets of fields be populated? | 9/19/01 | See Assumption 1 on page 2 of the requirements document. | |
| 010 | 9/17/01 | MCI/WCom | If the end users directory delivery address is identical to either the service or listed address, | 9/19/01 | See Assumption 1 on page 2 of the requirements document. | |

**Parsed CSR Queries
Update**

| Item | Date | CLEC | Query | Date | BST Response | NOTES |
|----------|---------|----------|---|---------|---|-------|
| 011.1-19 | 9/17/01 | MCI/WCom | <p>will all be parsed out in response transaction? What if they are not identical?</p> <p>The following fields were identified by the CLEC community (11/16/00 requirements review session) as valid fields to be utilized by BST for the CSR Inquiry and/or Response transactions (parsed). However, these field requirements are not contained in the BST 9/11 User Requirements document:</p> <ol style="list-style-type: none"> 1. CC – Company Code 2. AGAUTH – Agency Authorization 3. TOS – Type of Service 4. NAME – End User Name (not for directory delivery) 5. NC – Network Channel Code 6. NCI – Network Channel Interface Code 7. SECNCI – Secondary Network Channel Interface Code 8. FEATDES – Feature Description 9. LST – Local Service Termination 10. DGOUT – DID Digits Out 11. HNTYP – Hunting Type 12. HTSEQ – Hunting Sequence 13. SGNL – Signaling 14. DDADLO – Delivery Address Descriptive Location 15. STYC – Style Code 16. TOA – Type of Account 17. LNPL – Listed Name Placement 18. LTXNUM – Line of Text Reference Number 19. BRO – Business/Residence Placement Override | 9/19/01 | <p>Listed below are responses for each field:</p> <ol style="list-style-type: none"> 1. CC – Company Code - shown based on ownership of the account 2. AGAUTH – Agency Authorization - Code - Shown based on ownership of the account 3. TOS – Type of Service - Not on CSR 4. NAME – End User Name (not for directory delivery) - 5. NC – Network Channel Code - Not on CSR 6. NCI – Network Channel Interface Code - Not on CSR 7. SECNCI – Secondary Network Channel Interface Code - Not on CSR 8. FEATDES – Feature Description - See UR6776.0860 9. LST – Local Service Termination 10. DGOUT – DID Digits Out - See UR6776.0880, 0890, 0920 11. HNTYP – Hunting Type - See UR6776.0003B 12. HTSEQ – Hunting Sequence - See UR6776.0003B 13. SGNL – Signaling - See UR6776.0920 14. DDADLO – Delivery Address Descriptive Location - Not on CSR | |

**Parsed CSR Queries
Update**

| Item | Date | CLEC | Query | Date | BST Response | NOTES |
|------|---------|----------|--|---------|--|-------|
| | | | | | 15. STYC – Style Code - Not on CSR 16. TOA – Type of Account - Not on CSR 17. LNPL – Listed Name Placement - Not on CSR 18. LTXNUM – Line of Text Reference Number - Not on CSR 19. BRO – Business/Residence Placement Override - Not on CSR | |
| 012 | 9/17/01 | MCI/WCom | UR6776.0002 How will user select/designate parsed versus unparsed type request? | 9/19/01 | Depending on CLEC implementation the system will provide a an option to choose: View CSR or View Parsed CSR | |
| 013 | 9/17/01 | MCI/WCom | UR6776.0002A Need additional clarification on what last paragraph means, for BST owned accounts. | 9/19/01 | Do not understand what is being asked. | |
| 014 | 9/17/01 | MCI/WCom | UR6776.0003B Does block of data mean that within one transaction both parsed and non-parsed data will be returned? | 9/19/01 | Yes. | |
| 015 | 9/17/01 | MCI/WCom | UR6776.0003C How does this limitation equate to lines of text or access lines? What will be returned if this limitation is hit? What alternative does CLEC have if this limitation occurs? | 9/19/01 | The volume of data presented by Parsed CSR will be consistent with the volume returned on a “View CSR” query. | |
| 016 | 9/17/01 | MCI/WCom | UR6776.0004 What are inquiry requirements? CCNA was recommended to be prohibited for response transaction. | 9/19/01 | If the data is provided on the CSR, it will be provided via Parsed CSR. | |
| 017 | 9/17/01 | MCI/WCom | UR6776.0010 What are inquiry requirements? | 9/19/01 | Do not understand what is being asked. | |
| 018 | 9/17/01 | MCI/WCom | UR6776.0020 Do both options provide parsed only results, or what? The CLEC community requested that TXTYP be required | 9/19/01 | All queries will provided both parsed and unparsed information. | |

**Parsed CSR Queries
Update**

| Item | Date | CLEC | Query | Date | BST Response | NOTES |
|------|---------|----------|--|---------|---|-------|
| 019 | 9/17/01 | MCI/WCom | on response transaction. UR6776.0030 - 31 Date and time sent value on response transaction should not be ECHO but exact time of BST transmission. | 9/19/01 | Under research. | |
| 020 | 9/17/01 | MCI/WCom | UR6776.0040, 45, & 46 If user inputs WTN value in WTN field, are all associated TNs returned? If user inputs WTN in ATN field and WTN=BTN are all details returned? | 9/19/01 | Yes. | |
| 021 | 9/17/01 | MCI/WCom | UR6776.0080 Why is Class of service being returned as unfiled data? COS data should be returned as a 5 A/N field as per OBF guidelines. Identifies the type of service relationship for ordering. CLECs identified COS is a required response transaction field. | 9/19/01 | The Class of Service is located in the Unfiled Data and in the Service & Equipment sections of the CSR. | |
| 022 | 9/17/01 | MCI/WCom | UR6776.0180 Is APT, SUIT, UNIT, LOT, and SLIP an inclusive list of valid values for Room? | 9/19/01 | See BellSouth Business Rules | |
| 023 | 9/17/01 | MCI/WCom | UR6776.0190 Is WNG and PIER an inclusive list of valid values for Building, shouldn't BLDG also be included? In example used by BST, where would Atrium be located? | 9/19/01 | See BellSouth Business Rules | |
| 024 | 9/17/01 | MCI/WCom | UR6776.0200 Will Floor only contain a numeric value? What is inclusive list of valid values for Floor? | 9/19/01 | May be an alpha-numeric value | |
| 025 | 9/17/01 | MCI/WCom | UR6776.0240 Will BST only provide a 5 digit zip code value? | 9/19/01 | No | |
| 026 | 9/17/01 | MCI/WCom | UR6776.0420 What are the valid values? | 9/19/01 | May be an alpha-numeric value | |
| 027 | 9/17/01 | MCI/WCom | UR6776.0440 What are the valid values? | 9/19/01 | May be an alpha-numeric value | |
| 028 | 9/17/01 | MCI/WCom | UR6776.0450 What are the valid values? | 9/19/01 | May be an alpha-numeric value | |
| 029 | 9/17/01 | MCI/WCom | UR6776.0460 What are the valid values? Or are community names spelled in full? | 9/19/01 | May be an alpha-numeric value Community names may be abbreviated | |
| 030 | 9/17/01 | MCI/WCom | UR6776.0461 What are the valid values? | 9/19/01 | May be an alpha-numeric value | |
| 031 | 9/17/01 | MCI/WCom | UR6776.0470 What are the valid values? | 9/19/01 | May be an alpha-numeric value | |
| 032 | 9/17/01 | MCI/WCom | UR6776.0500 What are the valid values? | 9/19/01 | May be an alpha-numeric value | |
| 033 | 9/17/01 | MCI/WCom | UR6776.0650 What are the valid values? | 9/19/01 | May be an alpha-numeric value | |

**Parsed CSR Queries
Update**

| Item | Date | CLEC | Query | Date | BST Response | NOTES |
|-------------|-------------|-------------|---|----------------------|---|---|
| 034 | 9/17/01 | MCI/WCom | UR6776.0670 What are the valid values? | 9/19/01 | May be an alpha-numeric value | |
| 035 | 9/17/01 | MCI/WCom | UR6776.0680 What are the valid values? | 9/19/01 | May be an alpha-numeric value | |
| 036 | 9/17/01 | MCI/WCom | UR6776.0700 What are the valid values? | 9/19/01 | May be an alpha-numeric value | |
| 037 | 9/17/01 | MCI/WCom | UR6776.0720 What are the valid values? | 9/19/01 | May be an alpha-numeric value | |
| | | AT&T | Query | | | |
| 038 | 12/04/01 | AT&T | 1. TXNUM is defined as required, however, there is no corresponding field in the API to communicate this information to BellSouth. | 12/5/01 | INQNUM has been replaced by TXNUM, however, TXNUM will be machine generated returned in the message header as INQNUM. | See User Requirements 0010 for additional information. The most recent distribution of the User Requirements occurred on 9/28/01. |
| 039 | 12/04/01 | AT&T | 2. TXTYP has "suggested valid values". Are these the finalized valid values for this field? | 12/5/01 | TXTYP is optional. The valid values are listed below: E = entire CSR T = Listing Section only | |
| 040 | 12/04/01 | AT&T | 3. ATN and AN have a common definition, "BellSouth Response - The field name should be ATN or AN and this would indicate the CSR to pull." What does this mean, i.e., can the AN be sent in the ATN and vice-versa? | 12/13/01 12/05/01 | The ATN and AN are not interchangeable. Each should be entered in the respective field. The User may input the ATN, AN, or AN coupled with WTN to request system display of the parsed CSR. | See User Requirements 0040, 0045, and 0050 for additional information. The most recent distribution of the User Requirements occurred on 9/28/01. |
| 041 | 12/04/01 | AT&T | 4. DT-SENT is defined as required, however, there is no corresponding field in the API to communicate this information to BellSouth. | 12/5/01 | DT-SENT will be machine generated and returned as dateSent in the messageHeader. | See User Requirement 0030 for additional information. The most recent distribution of the User Requirements occurred on 9/28/01. |
| 042 | 12/04/01 | AT&T | 5. TM-SENT is not defined as being R/C/O. What should it be? | 12/5/01 | TM-SENT will be machine generated. | See User Requirements 0031 for additional information. The most recent distribution of the User Requirements occurred on 9/28/01. |
| 043 | 12/04/01 | AT&T | 6. AGAUTH is defined as optional, however, there is no corresponding field in the API to communicate this information to BellSouth. | 12/5/01 | Agency Authorization is not applicable. | |
| 045 | 12/04/01 | AT&T | 7. WTN is not defined as having multiple iterations, however, the API defined this field | 12/5/01 | The WTN can be iterative. | |

**Parsed CSR Queries
Update**

| Item | Date | CLEC | Query | Date | BST Response | NOTES |
|-------------|-------------|-------------|---|----------------------|---|--|
| 046 | 12/04/01 | AT&T | as being a list, i.e., having multiple iterations. 8. ECCKT is defined as an optional field, however, there is no corresponding field in the API to communicate this information to BellSouth. | 12/5/01 | ECCKT, if applicable, will be returned in the response to the parsed CSR query | See User Requirements 0820, 0860, and 0880 for additional information. The most recent distribution of the User Requirements occurred on 9/28/01. |
| 047 | 12/04/01 | AT&T | Response 1. TXTYP is defined as required, however, there is no corresponding field in the API to receive this information from BellSouth. | 12/5/01 | TXTYP will be echoed back to the user. | See User Requirement 0020 for additional information. The most recent distribution of the User Requirements occurred on 9/28/01. |
| 048 | 12/04/01 | AT&T | 2. D/TRCVD is defined as being required, however, there is no corresponding field in the API to receive this information from BellSouth. | 12/5/01 | D/TRCVD is not supported in OBF and is not required. | See User Requirements 0030 and 0031 for additional information. The most recent distribution of the User Requirements occurred on 9/28/01. |
| 049 | 12/04/01 | AT&T | 3. It is presumed that AGAUTH is NA. Please confirm. | 12/5/01 | AGAUTH is N/A. | |
| 050 | 12/04/01 | AT&T | 4. CS has the definition "Optional when TXTYP was 'E' (CSI only) or 'M' (CSI plus listing)". TXTYP does not have "M" as a valid value. | 12/5/01 | TXTYP is optional. The valid values are listed below: E = entire CSR T = Listing Section only | See User Requirement 0020 for additional information. The most recent distribution of the User Requirements occurred on 9/28/01. |
| 051 | 12/04/01 | AT&T | 5. Does CS equate to bes of the Identification structure? | 12/5/01 | Yes. CS will be returned as Basic Class of Service. | |
| 052 | 12/04/01 | AT&T | 6. TOS is defined as required, however, there is no corresponding field in the API to receive this information from BellSouth. | 12/5/01 | TOS is a field not currently on the BST CSR and will not be shown in the API | See Exceptions provided to CLECs on 10-12-01. |
| 053 | 12/04/01 | AT&T | 7. NAME, field 16, is defined as required, however, there is no corresponding field in the API to receive this information from BellSouth. | 12/13/01 12/05/01 | Name information will be returned from the Directory Section of the CSR following the FID DDA. | NAME = Joe Smith |

**Parsed CSR Queries
Update**

| Item | Date | CLEC | Query | Date | BST Response | NOTES |
|-------------|-------------|-------------|---|----------------------|---|--|
| 054 | 12/04/01 | AT&T | 8. TOA is defined as required, however, there is no corresponding field in the API to receive this information from BellSouth. | 12/5/01 | TOA is a field not currently on the BST CSR and will not be shown in the API. | See Exceptions provided to CLECs on 10-12-01 |
| 056 | 12/04/01 | AT&T | 9. How is LtnList associated to ListedNameList? | 12/5/01 | LtnList will list all LTNs. A later release will associate each LTN with the specific listing. | |
| 057 | 12/04/01 | AT&T | 10. How is NstnList associated to ListedNameList? | 12/5/01 | NstnList will list all NSTNs. A later release will associate each NSTN with the specific listing. | |
| 058 | 12/04/01 | AT&T | 11. LNPL is defined as conditional, however, there is no corresponding field in the API to receive this information from BellSouth. | 12/5/01 | LNPL is a field not currently on the BST CSR and will not be shown in the API. | See Exceptions provided to CLECs on 10-12-01 |
| 059 | 12/04/01 | AT&T | 12. TTITLE2 is not defined as iterative, however, it is defined as iterative in the API. Which definition should be used? | 12/5/01 | Title2 can be iterative. | Example: Dr. John Patterson DDS MS Title 1 = Dr. Title 2 = DDS Title 2 = MS |
| 060 | 12/04/01 | AT&T | 13. LTXNUM is defined as conditional, however, there is no corresponding field in the API to receive this information from BellSouth. | 12/5/01 | LTXNUM is a field not currently on the BST CSR and will not be shown in the API. | See Exceptions provided to CLECs on 10-12-01 |
| 061 | 12/04/01 | AT&T | 14. BRO is defined as conditional, however, there is no corresponding field in the API to receive this information from BellSouth. | 12/5/01 | BRO is a field not currently on the BST CSR and will not be shown in the API. | See Exceptions provided to CLECs on 10-12-01 |
| 062 | 12/04/01 | AT&T | 15. STYC is defined as conditional, however, there is no corresponding field in the API to receive this information from BellSouth. | 12/5/01 | STYC is a field not currently on the BST CSR and will not be shown in the API. | See Exceptions provided to CLECs on 10-12-01 |
| 063 | 12/04/01 | AT&T | 16. last is and element in the Listed Address structure, however, there is no corresponding entry in the matrix. | 12/5/01 | LAST is a valid response returned with Listed Address. | See User Requirement 0461 for additional information. The most recent distribution of the User Requirements occurred on 9/28/01. |
| 064 | 12/04/01 | AT&T | 17. TT is defined for each listing for ordering. Why is the same not true for pre-ordering? | 12/13/01 12/05/01 | Initially, TT will be displayed on the first occurrence. In a later release it | See User Requirement 0461 for additional information. |

**Parsed CSR Queries
Update**

| Item | Date | CLEC | Query | Date | BST Response | NOTES |
|-------------|-------------|-------------|--|----------------------|---|--|
| | | | ordering? | | will be returned for each listing for which it applies. | The most recent distribution of the User Requirements occurred on 9/28/01. |
| 065 | 12/04/01 | AT&T | 18. ADI is defined for each listing for ordering. Why is the same not true for pre-ordering? | 12/13/01 12/05/01 | Initially, ADI will be displayed on the first occurrence. In a later release it will be returned for each listing for which it applies. | See User Requirement 0530 for additional information. The most recent distribution of the User Requirements occurred on 9/28/01. |
| 066 | 12/04/01 | AT&T | 19. DIRTYP is not defined as iterative, however, it is defined as iterative in the API. Which is accurate? | 12/5/01 | DIRTYP can be iterative. | |
| 067 | 12/04/01 | AT&T | 20. DIRQTYA is not defined as iterative, however, it is defined as iterative in the API. Which is accurate? | 12/5/01 | DIRQTYA can be iterative. | |
| 068 | 12/04/01 | AT&T | 21. DDADLO is defined as conditional, however, there is no corresponding field in the API to receive this information from BellSouth. | 12/5/01 | The DDADLO field is not on the BST CSR. It will not be parsed and does not appear in the TAG API. | See Exceptions provided to CLECs on 10-12-01 |
| 069 | 12/04/01 | AT&T | 22. NC is defined as conditional, however, there is no corresponding field in the API to receive this information from BellSouth. | 12/5/01 | The NC field is not on the BST CSR. It will not be parsed and does not appear in the TAG API. | See Exceptions provided to CLECs on 10-12-01 |
| 070 | 12/04/01 | AT&T | 23. NCI is defined as conditional, however, there is no corresponding field in the API to receive this information from BellSouth. | 12/5/01 | The NCI field is not on the BST CSR. It will not be parsed and does not appear in the TAG API. | See Exceptions provided to CLECs on 10-12-01 |
| 071 | 12/04/01 | AT&T | 24. SECNCI is defined as conditional, however, there is no corresponding field in the API to receive this information from BellSouth. | 12/5/01 | The SECNCI field is not on the BST CSR. It will not be parsed and does not appear in the TAG API. | See Exceptions provided to CLECs on 10-12-01 |
| 074 | 12/04/01 | AT&T | 25. FEATDES is defined as conditional, however, there is no corresponding field in the API to receive this information from BellSouth. | 12/5/01 | The FEATDES field is not supported by OBF or the BST CSR. IT cannot be parsed and is not shown in the TAG API. | |
| 075 | 12/04/01 | AT&T | 26. FEATDES is defined as length "35 A/N ???". What does this mean? | 12/5/01 | The FEATDES field is not supported by OBF or the BST CSR. IT cannot be parsed and is not shown in the | |

**Parsed CSR Queries
Update**

| Item | Date | CLEC | Query | Date | BST Response | NOTES |
|------|----------|------|--|---------|---|--|
| 076 | 12/04/01 | AT&T | 27. LST is defined as conditional, however, there is no corresponding field in the API to receive this information from BellSouth. | 12/5/01 | TAG API. The LST field is not supported on the BST CSR. It will not be parsed and does not appear in the TAG API. | See Exceptions provided to CLECs on 10-12-01 |
| 077 | 12/04/01 | AT&T | 28. DGOUT is defined as conditional, however, there is no corresponding field in the API to receive this information from BellSouth. | 12/5/01 | The DGOUT field (DID Digits Out) is not supported on the BST CSR. It cannot be parsed. It does not appear in the TAG API. The data will be provided as feature detail associated with the first trunk in the DID trunk group. | See Exceptions provided to CLECs on 10-12-01 |
| 078 | 12/04/01 | AT&T | 29. DTGN is not defined as iterative, however, it is defined as iterative in the API. Which is accurate? | 12/5/01 | DTGN can be iterative. | |
| 079 | 12/04/01 | AT&T | 30. DRTI is not defined as iterative, however, it is defined as iterative in the API. Which is accurate? | 12/5/01 | DRTI can be iterative | |
| 080 | 12/04/01 | AT&T | 31. DTLI is not defined as iterative, however, it is defined as iterative in the API. Which is accurate? | 12/5/01 | DTLI can be iterative. | |
| 081 | 12/04/01 | AT&T | 32. DTKID is not defined as iterative, however, it is defined as iterative in the API. Which is accurate? | 12/5/01 | DTKID can be iterative. | |
| 082 | 12/04/01 | AT&T | 33. HNTYP is defined as conditional, however, there is no corresponding field in the API to receive this information from BellSouth. | 12/5/01 | The HNTYP field (Hunting Type) will not be returned in the parsed information. It will be provided block of data associated with the S&E Section of the CSR. | See Exceptions provided to CLECs on 10-12-01 |
| 083 | 12/04/01 | AT&T | 34. HTSEQ is defined as conditional, however, there is no corresponding field in the API to receive this information from BellSouth. | 12/5/01 | The HTSEQ field (Hunting Sequence) will not be parsed. It will be provided in the block of data associated with the S&E Section of the CSR. | See Exceptions provided to CLECs on 10-12-01 |
| 084 | 12/04/01 | AT&T | 35. SGNL is defined as conditional, however, there is no corresponding field in the API to receive this information from BellSouth. | 12/5/01 | The SGNL field is not supported on the BST CSR. It cannot be parsed and will not be shown in the API. | See Exceptions provided to CLECs on 10-12-01 |

**Parsed CSR Queries
Update**

| Item | Date | CLEC | Query | Date | BST Response | NOTES |
|-------------|-------------|-------------|---|----------------------|---|--------------|
| 085 | 12/10/01 | XchangeLink | Check to see if TAG requires the ATN on all transactions. | 12/11/01 | TAG requires ATN or AN on all transactions. | |
| 086 | 12/10/01 | XchangeLink | Will HID appear as an aggregate in the S&E or associated with each WTN? | 12/11/01 | HID may appear as an aggregate and per WTN based on how it appears in the unparsed CSR. | |
| 087 | 12/10/01 | XchangeLink | Will DTK appear as an aggregate in the S&E or associated with each WTN? | 12/11/01 | DTK will appear as an aggregate. | |
| 088 | 12/10/11 | XchangeLink | Will DTKID appear as an aggregate in the S&E or associated with each WTN? | 12/11/01 | DTKID will appear per DID Trunk for which it is indicated on the unparsed CSR. | |
| 089 | 12/10/01 | XchangeLink | What is the maximum field length for the variable length fields defined as data blocks? | 12/11/01 | The maximum field length has no fixed limit. | |
| 090 | 12/10/01 | AT&T | Will BST consider extending the TAG API Versions 7.5.012 and 7.6.12 beyond 3/02/02 | 12/13/01 | The retirement of TAG API Versions 7.5.0.12 and 7.6.2.1 will occur as announced previously. | |
| 091 | 12/10/01 | XchangeLink | What is required to initiate a query for Parsed CSR? | 12/13/01 12/05/01 | The ATN and AN are not interchangeable. Each should be entered in the respective field. The User may input the ATN, AN, or AN coupled with WTN to request system display of the parsed CSR. | |
| 092 | 12/13/01 | DSET | CLECs may request either a Parsed CSR or Unparsed CSR for any account according to the TAG API. Will there be a time when CLECs can only request Parsed CSR or will BST allow CLECs to request CSRs either way? | 12/13/01 | There are no plans to remove the capability to view an Unparsed CSR. | |

Attachment 3

From: bseigler@att.com
Sent: Tuesday, November 20, 2001 11:30 AM
To: Alan.Flanigan@twtelecom.com; alee@epicus.com; alejandro@amexcomm.com; amanda.hill@wcom.com; Annette.Cook@espire.net; annettey@Lightyearcom.com; apatel3@telcordia.com; Lynn.Arthur@BellSouth.com; avincent@communitytelephone.com; bbil@4pra.com; BellSouth@quintessent.net; best2@surfsouth.com; bethh@communitytelephone.com; beverly.lockwood@btitele.com; billg@telcordia.com; blsinterfacecontrol@kpmg.com; bmurdo@KMCTELECOM.com; Bob.Buerrosse@allegiancetelecom.com; Bobik, Richard A - NCAM; Bradbury, Jay M - LGA; Brenda.Gant@KMCTELECOM.com; Brent.McMahan@networktelephone.net; BStowe@City.marietta.GA.US; bszafran@covad.com; bwellman@idstelcom.com; c-david.burley@wcom.com; c-Lorraine.Watson@wcom.com; c_and_m@bellsouth.net; caren.schaffner@wcom.com; CAshford@birch.com; cassandrap@networktelephone.net; Catherine.Gray@alltel.com; cbnaadmin@home.com; cchiavatti@usatelecominc.com; Iacovelli, Christopher D - ALINF; CDrake@City.marietta.GA.US; Cecere, Chris - Broadband; cecilia.ortiz@adelphiacom.com; Cedric.Cox@wcom.com; cflanigan@uslec.com; changecontrol.bellsouth@onepointcom.com; Chapmanwe@cep.com; charles.a.stahlberger@xo.com; charrison@mpowercom.com; chaynes@trivergent.com; cheryl@eatei.com; cheryl_acosta@stratsoilandgas.com; chrisg@pvtel.net; Christine.Schnelle@wcom.com; christine.shelton@cc.gte.com; clarson@dset.com; clhawk@KMCTELECOM.com; CoDavis@covad.com; colleen.e.sponseller@wcom.com; Connie@albionconnect.com; Connie.Nathan@KMCTELECOM.com; conniec@arrowcom.com; Craig@exceleron.com; Craig.B.Douglas@MCI.com; CSoptic@birch.com; csti@bellsouth.net; daddymax@netbci.com; daisy.ling@wcom.com; DDougherty@birch.com; Debra.Pasquale@btitele.com; default.user@BellSouth.com; DElliott@connectsouth.com; desiree@communitytelephone.com; dfoust@deltacom.com; dgraham@mantiss.com; dkane@aspiretelecom.com; dmcmanus@trivergent.com; DNapovanice@birch.com; DoBeck@MediaOne.com; don@amexcomm.com; donna.poe@knology.com; donnas@intetech.com; Doreen.E.Raia@wcom.com; dpetry@ix.netcom.com; Dwight.Scrivener@wcom.com; dwilliams@nowcommunications.com; ed.ramsden@cc.gte.com; EFarnell@broadband.att.com; EGunn@birch.com; Ellen.Neis@mail.sprint.com; Elliot.Wrann@dsl.net; eodell@dset.com; epadfield@nextlink.com; ESaeed@northpoint.net; ESingleton@eztalktelephone.com; evdoty@nextlink.com; eyu@talk.com; Faye.Restaino@dsl.net; fjohnson@covad.com; fouts@communitytelephone.com; frankb@cellone-ms.com; Fred.Brigham@wcom.com; Gary@CSII.net; generalg@cris.com; gerrig@Lightyearcom.com; Glenn.Sonnier@usunwired.com; gmelvin@trivergent.com; gulfcoast@dotstar.net; Hwhittington@mpowercom.com; jamesk@onisn.net; jayala@rhythms.net; jbritton@phonesforall.com; Jdavid4715@aol.com; JDuffey@PSC.STATE.FL.US; Jeff.Walker@accesscomm.com; Jennifers@universaltelecominc.com; jfuller@fairpoint.com; JG6837@ctmail.snet.com; jhoze@KMCTELECOM.com; jim.lee@dsl.net; Jim.Meyers@wcom.com; jjohnson@idstelcom.com; jmclau@KMCTELECOM.com; JMMaxwell@Intermedia.com; JoanC@networktelephone.net; joanneb@networktelephone.net; JOliver@birch.com; jose.aguilar@btitele.com; jshields@globalc-inc.com; JtWilson2@att.com; jwengert@newsouth.com; jwilwerding@birch.com; KAnderson@nwp.com; karen.grim@mail.sprint.com; karind@covad.com; kathryn_hinds@globalcrossing.com; Kathryn.Phipps@btitele.com; kcooper@EFTIA.com; Kevin@albionconnect.com; KGillette-Hoskins@quintessent.net; khudson@nextlink.com; Kimberly.O.Williams@MCI.com; KKester@STIS.com; kmarshall@telstar.org; kmiller@northpointcom.com; KPollard@birch.com; kschwart@covad.com; Timmons, King C (K.C.) - NCAM; ktrygges@covad.com; Uchida, Karen - NLNS; Kyle.Kopytchak@networktelephone.net; launch-now.notify@cscocoe.accenture.com; lavernek@arrowcom.com; LCamillo@nwp.com; ldavidov@dset.com; len.chandler@btitele.com; LHamlin@birch.com; LHinton@PrismCSI.net; lijohnso@covad.com; linda@networkonecom.com; lindak@communitytelephone.com; lisa@annox.com; Lminasola@MediaOne.com; Lorraine.Watson@wcom.com; lortega@commsouth.net; lynn@mfn.net; lynnj@nowcommunications.com; Mandy.S.Jenkins@alltel.com; mark@annox.com; Mark.Mecca@dsl.net; Mary.I.Mitchell@xo.com; marybethkeane@kpmg.com; MatthewBaker@nwp.com; mcbrunnhilde@juno.com; mhappell@kpmg.com; MConnolly@birch.com; mconquest@itcdeltacom.com; mdominick@trivergent.com; mer@networkwcs.com; MGimmi@nuvox.com; michael.dekorte@Lightyearcom.com; Micki.Jones@wcom.com; microsun@bellsouth.net; mkennedy@newsouth.com; mmclaughlin@dset.com; MPatyk@connectsouth.com;

To: msykes@telcordia.com; mt7210@momail.sbc.com; MWayner@birch.com; Nancy.Watt@RHTelCo.com; Natalie.Franklin@KMCTELECOM.com; NDreier@birch.com; Nicole.Moorman@adelphiacom.com; nmunsie@commsouth.net; NStuckey@birch.com; PBarker@aol.com; PBohn@MediaOne.com; Pkinghorn@eztalktelephone.com; pmckay@momentumbusiness.com; PPinick@birch.com; prehm@nightfire.com; prichardson@trivergent.com; PRubino@Z-TEL.com; Quan.Nguyen@KMCTELECOM.com; Rae.Couvillion@wcom.com; rbennett@floridadigital.net; rbreckin@telcordia.com; rbuffa@interloop.net; rcostanzo@velocityky.com; Rdupraw@mpowercom.com; Renee.Clark@espire.net; Renee.Cliff@dsl.net; reym@networktelephone.net; rharsila@commsouth.net; rhonda.calvert@adelphiacom.com; Rick.Whisamore@wcom.com; rjohnson@epicus.com; robert@alternativephone.com; Ronald.Klamer@wcom.com; rturkel@broadriver.com; ruth@mfn.net; RWilson@City.marietta.GA.US; sandra.k.evans@mail.sprint.com; sandra.kahl@wcom.com; Sandrajf@intetech.com; sbowling@caprock.com; SchubertJ@birch.com; schula.hobbs@dsl.net; Scott.Hibbard@wcom.com; SELEAZER@talk.com; shane@eatel.com; shannon.smith@itchold.com; sharon.arnett@mail.sprint.com; Sherry.Lichtenberg@wcom.com; Shirley.Roberts@KMCTELECOM.com; SLively@trivergent.com; smason@interloop.net; smoore@trivergent.com; snole@kpmg.com; srober@KMCTELECOM.com; SStapler@itcdeltacom.com; SSullivan@nwp.com; Stacia.Edwards@KMCTELECOM.com; Steve.Filliaux@btitele.com; Steve.Moore@mail.sprint.com; steve.sulak@nowcommunications.com; steve.taff@allegiancetelecom.com; susan.sherfey@btitele.com; svc-gate@telcordia.com; swargo@rhythms.net; talleylinda@mindspring.com; tami.m.swenson@accenture.com; Tanya.Finney@espire.net; Tara.Odems@allegiancetelecom.com; TAYLORJG@LCI.COM; taziz@epicus.com; tfry@commsouth.net; Tim@excleron.com; timw@networkonecom.com; Travis.Tindal@om1.al.bst.bls.com; TJStokes@trivergent.com; Tlescudero@idstelcom.com; tmontemayer@mantiss.com; tntel@bellsouth.net; Todd@CSII.net; tom.hyde@Cbeyond.net; tonyam@communitytelephone.com; trsmith@trivergent.com; ts1336@sbc.com; TThompson2@broadband.att.com; Tyra.Hush@wcom.com; usfloridaoss@kpmg.com; valarie_reck@globalcrossing.com; wendy.hernandez@comporium.com; WFletcher@birch.com; wmknapek@Intermedia.com; wolfsbrg@cris.com; Yvette.Brown@espire.net; Zachary.Baudoin@KMCTELECOM.com; bellsouth@nightfire.com; Cain,Donna - NCAM; cschneider@concretio.com; Lianne.Griffin@BellSouth.com; ssarem@mpowercom.com; pwilson@mpowercom.com; Debbie.Timmons@om1.al.bst.bls.com; Bill.York@wcom.com; donaldsond@epb.net; jason@basicphone.org; jerry.hill@accesscomm.com; scott.emener@accesscomm.com; kcaudill@idstelcom.com; BSNotes@talk.com; Nancy.Welsh@espire.net; tagteam@telexcelpartners.com; james.d.tomlinson@xo.com; Jeannie.Seguina@adelphia.com; SCook@City.marietta.GA.US

Subject: RE: need pre-order rules for Parsed CSR

BCCM:

Here are just a few of the critical pieces of info lacking in what BST has provided in support of Parsed CSR to date:

- * TXNUM is defined as required, but does not appear in the API document.
- * The valid values for-TXTYP are defined as "BellSouth suggested valid values".
- * TOS is defined as required for responses, but is not present in the API document.
- * There is no definition of how lists of information are related, e.g., there is a list of listed TNs and a list of Listed Name - How are these related?

These are just more examples of the poor quality of documents provided by BST to the CLEC community. This bad information increases CLEC costs, decreases CLEC efficiency and elongates the conversion window from BST to CLECs. Bottomline, end users will be negatively impacted.

Who in BST is responsible to review/compare your API docs with Business Rules to ensure they are in synch? When will BST provide updates to the Pre-Order rules?
Bernadette Seigler

District Manager
AT&T Local Services & Access Management
So. Region OSS Interconnection
V: 404-810-8956
F: 404-810-8605
Pager: 888-858-7243 Pin: 125159

> -----Original Message-----

> From: Seigler, Bernadette M (Bern), NCAM
> Sent: Monday, November 19, 2001 5:08 PM
> To: Alan.Flanigan@twtelecom.com; alee@epicus.com;
> alejandro@amexcomm.com; amanda.hill@wcom.com; Annette.Cook@espire.net;
> annettey@Lightyearcom.com; apatel3@telcordia.com;
> Lynn.Arthur@BellSouth.com; avincent@communitytelephone.com; bbil@4pra.com;
> BellSouth@quintessent.net; best2@surfsouth.com;
> bethh@communitytelephone.com; beverly.lockwood@btitele.com;
> billg@telcordia.com; blsinterfacecontrol@kpmg.com; bmurdo@KMCTELECOM.com;
> Bob.Buerrosse@allegiancetelecom.com; Bobik, Richard A, NCAM; Bradbury, Jay
> M, LGA; Brenda.Gant@KMCTELECOM.com; Brent.McMahan@networktelephone.net;
> Seigler, Bernadette M (Bern), NCAM; BStowe@City.marietta.GA.US;
> bszafran@covad.com; bwellman@idstelcom.com; c-david.burley@wcom.com;
> c-Lorraine.Watson@wcom.com; c_and_m@bellsouth.net;
> caren.schaffner@wcom.com; CAshford@birch.com;
> cassandrap@networktelephone.net; Catherine.Gray@alltel.com;
> cbnaadmin@home.com; cchiavatti@usatelecominc.com; lacovelli, Christopher
> D, NLCIO; CDrake@City.marietta.GA.US; Cecere.Chris@broadband.att.com;
> cecilia.ortiz@adelphiacom.com; Cedric.Cox@wcom.com; cflanigan@uslec.com;
> changecontrol.bellsouth@onepointcom.com; Chapmanwe@cep.com;
> charles.a.stahlberger@xo.com; charrison@mpowercom.com;
> chaynes@trivergent.com; cheryl@eatel.com;
> cheryl_acosta@stratosoilandgas.com; chrsg@pvtel.net;
> Christine.Schnelle@wcom.com; christine.shelton@cc.gte.com;
> clarson@dset.com; clhawk@KMCTELECOM.com; CoDavis@covad.com;
> colleen.e.sponseller@wcom.com; Connie@albionconnect.com;
> Connie.Nathan@KMCTELECOM.com; conniec@arrowcom.com; Craig@exceleron.com;
> Craig.B.Douglas@MCI.com; CSoptic@birch.com; csti@bellsouth.net;
> daddymax@netbci.com; daisy.ling@wcom.com; DDougherty@birch.com;
> Debra.Pasquale@btitele.com; default.user@BellSouth.com;
> DElliott@connectsouth.com; desiree@communitytelephone.com;
> dfoust@deltacom.com; dgraham@mantiss.com; dkane@aspiretelecom.com;
> dmcmanus@trivergent.com; DNapovanice@birch.com; DoBeck@MediaOne.com;
> don@amexcomm.com; donna.poe@knology.com; donnas@intetech.com;
> Doreen.E.Raia@wcom.com; dpetry@ix.netcom.com; Dwight.Scrivener@wcom.com;
> dwilliams@nowcommunications.com; ed.ramsden@cc.gte.com;
> EFarnell@broadband.att.com; EGunn@birch.com; Ellen.Neis@mail.sprint.com;
> Elliot.Wrann@dsl.net; eodell@dset.com; epadfield@nextlink.com;
> ESaeed@northpoint.net; ESingleton@eztalktelephone.com;
> evdoty@nextlink.com; eyu@talk.com; Faye.Restaino@dsl.net;
> fjohnson@covad.com; fouts@communitytelephone.com; frankb@cellone-ms.com;
> Fred.Brigham@wcom.com; Gary@CSil.net; generalg@cris.com;
> gerrig@Lightyearcom.com; Glenn.Sonnier@usunwired.com;
> gmelvin@trivergent.com; gulfcoast@dotstar.net; Hwhittington@mpowercom.com;
> jamesk@onisn.net; jayala@rhythms.net; jbritton@phonesforall.com;
> Jdavid4715@aol.com; JDuffey@PSC.STATE.FL.US; Jeff.Walker@accesscomm.com;
> Jennifers@universaltelecominc.com; jfuller@fairpoint.com;
> JG6837@ctmail.snet.com; jhoze@KMCTELECOM.com; jim.lee@dsl.net;
> Jim.Meyers@wcom.com; jjohnson@idstelcom.com; jmclau@KMCTELECOM.com;
> JMMaxwell@Intermedia.com; JoanC@networktelephone.net;
> joanneb@networktelephone.net; JOliver@birch.com; jose.aguilar@btitele.com;
> jshields@globalc-inc.com; JtWilson2@att.com; jwengert@newsouth.com;
> jwilwerding@birch.com; KAnderson@nwp.com; karen.grim@mail.sprint.com;

> karind@covad.com; kathryn_hinds@gloobalcrossing.com;
 > Kathryn.Phipps@btitele.com; kcooper@EFTIA.com; Kevin@albionconnect.com;
 > KGillette-Hoskins@quintessent.net; khudson@nextlink.com;
 > Kimberly.O.Williams@MCI.com; KKester@STIS.com; kmarshall@telstar.org;
 > kmiller@northpointcom.com; KPollard@birch.com; kschwart@covad.com;
 > Timmons, King C (K.C.), NCAM; ktrygges@covad.com; KUchida@northpoint.net;
 > Kyle.Kopytchak@networktelephone.net;
 > launch-now.notify@cscoe.accenture.com; lavernek@arrowcom.com;
 > LCamillo@nwp.com; ldavidov@dset.com; len.chandler@btitele.com;
 > LHamlin@birch.com; LHinton@PrismCSI.net; lijohnso@covad.com;
 > linda@networkonecom.com; lindak@communitytelephone.com; lisa@annox.com;
 > Lminasola@MediaOne.com; Lorraine.Watson@wcom.com; lortega@commsouth.net;
 > lynn@mfnet.net; lynnj@nowcommunications.com; Mandy.S.Jenkins@alltel.com;
 > mark@annox.com; Mark.Mecca@dsl.net; Mary.I.Mitchell@xo.com;
 > marybethkeane@kpmg.com; MatthewBaker@nwp.com; mcbrunnhilde@juno.com;
 > mchappell@kpmg.com; MConnolly@birch.com; mconquest@itcdeltacom.com;
 > mdominick@trivergent.com; mer@networkwcs.com; MGimmi@nuvox.com;
 > michael.dekorte@Lightyearcom.com; Micki.Jones@wcom.com;
 > microsun@bellsouth.net; mkennedy@newsouth.com; mmclaughlin@dset.com;
 > MPatyk@connectsouth.com; msykes@telcordia.com; mt7210@momail.sbc.com;
 > MWagner@birch.com; Nancy.Watt@RHTelCo.com;
 > Natalie.Franklin@KMCTELECOM.com; NDreier@birch.com;
 > Nicole.Moorman@adelphiacom.com; nmunsie@commsouth.net; NStuckey@birch.com;
 > PBarker@aol.com; PBohn@MediaOne.com; Pkinghorn@eztalktelephone.com;
 > pmckay@momentumbusiness.com; PPinick@birch.com; prehm@nightfire.com;
 > prichardson@trivergent.com; PRubino@Z-TEL.com; Quan.Nguyen@KMCTELECOM.com;
 > Rae.Couvillion@wcom.com; rbennett@floridadigital.net;
 > rbreckin@telcordia.com; rbuffa@interloop.net; rcostanzo@velocityky.com;
 > Rdupraw@mpowercom.com; Renee.Clark@espire.net; Renee.Clift@dsl.net;
 > reym@networktelephone.net; rharsila@commsouth.net;
 > rhonda.calvert@adelphiacom.com; Rick.Whisamore@wcom.com;
 > rjohnson@epicus.com; robert@alternativephone.com; Ronald.Klamer@wcom.com;
 > rturkel@broadriver.com; ruth@mfnet.net; RWilson@City.marietta.GA.US;
 > sandra.k.evans@mail.sprint.com; sandra.kahl@wcom.com;
 > Sandrajf@intetech.com; sbowling@caprock.com; SchubertJ@birch.com;
 > schula.hobbs@dsl.net; Scott.Hibbard@wcom.com; SELEAZER@talk.com;
 > shane@eatel.com; shannon.smith@itchold.com; sharon.arnett@mail.sprint.com;
 > Sherry.Lichtenberg@wcom.com; Shirley.Roberts@KMCTELECOM.com;
 > SLively@trivergent.com; smason@interloop.net; smoore@trivergent.com;
 > snole@kpmg.com; srober@KMCTELECOM.com; SStapler@itcdeltacom.com;
 > SSullivan@nwp.com; Stacia.Edwards@KMCTELECOM.com;
 > Steve.Filliaux@btitele.com; Steve.Moore@mail.sprint.com;
 > steve.sulak@nowcommunications.com; steve.taff@allegiancetelecom.com;
 > susan.sherfey@btitele.com; svc-gate@telcordia.com; swargo@rhythms.net;
 > talleylinda@mindspring.com; tami.m.swenson@accenture.com;
 > Tanya.Finney@espire.net; Tara.Odems@allegiancetelecom.com;
 > TAYLORJG@LCL.COM; taziz@epicus.com; tfry@commsouth.net; Tim@excleron.com;
 > timw@networkonecom.com; Travis.Tindal@om1.al.bst.bls.com;
 > TJStokes@trivergent.com; Tlescudero@idstelcom.com;
 > tmontemayer@mantiss.com; intel@bellsouth.net; Todd@CSII.net;
 > tom.hyde@Cbeyond.net; tonyam@communitytelephone.com;
 > trsmith@trivergent.com; ts1336@sbc.com; TThompson2@broadband.att.com;
 > Tyra.Hush@wcom.com; usfloridaoss@kpmg.com;
 > valarie_reck@globalcrossing.com; wendy.hernandez@comporium.com;
 > WFletcher@birch.com; wmknapek@Intermedia.com; wolfsbrg@cris.com;
 > Yvette.Brown@espire.net; Zachary.Baudoin@KMCTELECOM.com;
 > bellsouth@nightfire.com; Cain, Donna, NCAM; cschneider@concretio.com;
 > Lianne.Griffin@BellSouth.com; ssarem@mpowercom.com; pwilson@mpowercom.com;
 > Debbie.Timmons@om1.al.bst.bls.com; Bill.York@wcom.com; donaldsond@epb.net;
 > jason@basicphone.org; jerry.hill@accesscomm.com;
 > scott.emener@accesscomm.com; kcaudill@idstelcom.com; BSNotes@talk.com;
 > Nancy.Welsh@espire.net; tagteam@telexcelpartners.com;

> james.d.tomlinson@xo.com; Jeannie.Seguin@adelphia.com;
> SCook@City.marietta.GA.US
> Subject: need pre-order rules for Parsed CSR
>
> BCCM:
> Glad to see that TAG API 7.7 was finally posted on Friday however we still
> do not have all info needed.
> When will the Pre-Order Business Rules for Parsed CSRs be issued/posted as
> they are not covered in the two docs posted below?
> #1 BellSouth Pre-Order Business Rules Nov 2001 - Version 11 D
>
> #2 BellSouth Pre-Order Business Rules - Data Dictionary Nov 2001 -
> Version 7C
>
> Bernadette Seigler
> District Manager
> AT&T Local Services & Access Management
> So. Region OSS Interconnection
> V: 404-810-8956
> F: 404-810-8605
> Pager: 888-858-7243 Pin: 125159
>
>

Attachment 4

From: bseigler@att.com
Sent: Monday, November 19, 2001 5:08 PM
To: Alan.Flanigan@twtelecom.com; alee@epicus.com; alejandro@amexcomm.com; amanda.hill@wcom.com; Annette.Cook@espire.net; annettey@Lightyearcom.com; apatel3@telcordia.com; Lynn.Arthur@BellSouth.com; avincent@communitytelephone.com; bbil@4pra.com; BellSouth@quintessent.net; best2@surfsouth.com; bethh@communitytelephone.com; beverly.lockwood@btitele.com; billg@telcordia.com; bisinterfacecontrol@kpmg.com; bmurdo@KMCTELECOM.com; Bob.Buerrosse@allegiancetelecom.com; Bobik, Richard A - NCAM; Bradbury, Jay M - LGA; Brenda.Gant@KMCTELECOM.com; Brent.McMahan@networktelephone.net; Seigler, Bernadette M (Bern) - NCAM; BStowe@City.marietta.GA.US; bszafran@covad.com; bwellman@idstelcom.com; c-david.burley@wcom.com; c-Lorraine.Watson@wcom.com; c_and_m@bellsouth.net; caren.schaffner@wcom.com; CAshford@birch.com; cassandrap@networktelephone.net; Catherine.Gray@alltel.com; cbnaadmin@home.com; cchiavatti@usatelecominc.com; lacovelli, Christopher D - ALINF; CDrake@City.marietta.GA.US; Cecere, Chris - Broadband; cecilia.ortiz@adelphiacom.com; Cedric.Cox@wcom.com; cflanigan@uslec.com; changecontrol.bellsouth@onepointcom.com; Chapmanwe@cep.com; charles.a.stahlberger@xo.com; charrison@mpowercom.com; chaynes@trivergent.com; cheryl@eatel.com; cheryl_acosta@stratosoilandgas.com; chrisg@pvtel.net; Christine.Schnelle@wcom.com; christine.shelton@cc.gte.com; clarson@dset.com; clhawk@KMCTELECOM.com; CoDavis@covad.com; colleen.e.sponsor@wcom.com; Connie@albionconnect.com; Connie.Nathan@KMCTELECOM.com; conniec@arrowcom.com; Craig@excleron.com; Craig.B.Douglas@MCI.com; CSoptic@birch.com; csti@bellsouth.net; daddymax@netbci.com; daisy.ling@wcom.com; DDougherty@birch.com; Debra.Pasquale@btitele.com; default.user@BellSouth.com; DElliott@connectsouth.com; desiree@communitytelephone.com; dfoust@deltacom.com; dgraham@mantiss.com; dkane@aspiretelecom.com; dmcmanus@trivergent.com; DNapovanice@birch.com; DoBeck@MediaOne.com; don@amexcomm.com; donna.poe@knology.com; donnas@intetech.com; Doreen.E.Raia@wcom.com; dpetry@ix.netcom.com; Dwight.Scrivener@wcom.com; dwilliams@nowcommunications.com; ed.ramsden@cc.gte.com; EFarnell@broadband.att.com; EGunn@birch.com; Ellen.Neis@mail.sprint.com; Elliot.Wrann@dsl.net; eodell@dset.com; epadfield@nextlink.com; ESaeed@northpoint.net; ESingleton@eztalktelephone.com; evdoty@nextlink.com; eyu@talk.com; Faye.Restaino@dsl.net; fjohanson@covad.com; fouts@communitytelephone.com; frankb@cellone-ms.com; Fred.Brigham@wcom.com; Gary@CSII.net; generalg@cris.com; gerrig@Lightyearcom.com; Glenn.Sonnier@usunwired.com; gmelvin@trivergent.com; gulfcoast@dotstar.net; Hwhittington@mpowercom.com; jamesk@onisn.net; jayala@rhythms.net; jbritton@phonesforall.com; Jdavid4715@aol.com; JDuffey@PSC.STATE.FL.US; Jeff.Walker@accesscomm.com; Jennifers@universaltelecominc.com; jfuller@fairpoint.com; JG6837@ctmail.snet.com; jhoze@KMCTELECOM.com; jim.lee@dsl.net; Jim.Meyers@wcom.com; jjohnson@idstelcom.com; jmclau@KMCTELECOM.com; JMMaxwell@Intermedia.com; JoanC@networktelephone.net; joanneb@networktelephone.net; JOliver@birch.com; jose.aguilar@btitele.com; jshields@globalc-inc.com; JtWilson2@att.com; jwengert@newsouth.com; jwiwerding@birch.com; KAnderson@nwp.com; karen.grim@mail.sprint.com; karind@covad.com; kathryn_hinds@globalcrossing.com; Kathryn.Phipps@btitele.com; kcooper@EFTIA.com; Kevin@albionconnect.com; KGillette-Hoskins@quintessent.net; khudson@nextlink.com; Kimberly.O.Williams@MCI.com; KKester@STIS.com; kmarshall@telstar.org; kmiller@northpointcom.com; KPollard@birch.com; kschwartz@covad.com; Timmons, King C (K.C.) - NCAM; ktrygges@covad.com; Uchida, Karen - NLNS; Kyle.Kopytchak@networktelephone.net; launch-now.notify@cscoe.accenture.com; lavernek@arrowcom.com; LCamillo@nwp.com; ldavidov@dset.com; len.chandler@btitele.com; LHamlin@birch.com; LHinton@PrismCSI.net; lijohnso@covad.com; linda@networkonecom.com; lindak@communitytelephone.com; lisa@annox.com; Lminasola@MediaOne.com; Lorraine.Watson@wcom.com; lortega@commsouth.net; lynn@mf.net; lynnj@nowcommunications.com; Mandy.S.Jenkins@alltel.com; mark@annox.com; Mark.Mecca@dsl.net; Mary.I.Mitchell@xo.com; marybethkeane@kpmg.com; MatthewBaker@nwp.com; mcbrunnhilde@juno.com; mchappell@kpmg.com; MConnolly@birch.com; mconquest@itcdeltacom.com; mdominick@trivergent.com; mer@networkwcs.com; MGimmi@nuvox.com; michael.dekorte@Lightyearcom.com; Micki.Jones@wcom.com; microsun@bellsouth.net; mkennedy@newsouth.com; mmclaughlin@dset.com; MPatyk@connectsouth.com;

To: msykes@telcordia.com; mt7210@momail.sbc.com; MWagner@birch.com; Nancy.Watt@RHTelCo.com; Natalie.Franklin@KMCTELECOM.com; NDreier@birch.com; Nicole.Moorman@adelphiacom.com; nmunsie@commsouth.net; NStuckey@birch.com; PBarker@aol.com; PBohn@MediaOne.com; Pkinghorn@eztalktelephone.com; pmckay@momentumbusiness.com; PPinick@birch.com; prehm@nightfire.com; prichardson@trivergent.com; PRubino@Z-TEL.com; Quan.Nguyen@KMCTELECOM.com; Rae.Couvillion@wcom.com; rbennett@floridadigital.net; rbreckin@telcordia.com; rbuffa@interloop.net; rcostanzo@velocityky.com; Rdupraw@mpowercom.com; Renee.Clark@espire.net; Renee.Clift@dsl.net; reym@networktelephone.net; rharsila@commsouth.net; rhonda.calvert@adelphiacom.com; Rick.Whisamore@wcom.com; rjohnson@epicus.com; robert@alternativephone.com; Ronald.Klamer@wcom.com; rturkel@broadriver.com; ruth@mfn.net; RWilson@City.marietta.GA.US; sandra.k.evans@mail.sprint.com; sandra.kahl@wcom.com; Sandrajf@intetech.com; sbowling@caprock.com; SchubertJ@birch.com; schula.hobbs@dsl.net; Scott.Hibbard@wcom.com; SELEAZER@talk.com; shane@eatel.com; shannon.smith@itchold.com; sharon.arnett@mail.sprint.com; Sherry.Lichtenberg@wcom.com; Shirley.Roberts@KMCTELECOM.com; SLively@trivergent.com; smason@interloop.net; smoore@trivergent.com; snole@kpmg.com; srober@KMCTELECOM.com; SStapler@itcdeltacom.com; SSullivan@nwp.com; Stacia.Edwards@KMCTELECOM.com; Steve.Filliaux@btitele.com; Steve.Moore@mail.sprint.com; steve.sulak@nowcommunications.com; steve.taff@allegiancetelecom.com; susan.sherfey@btitele.com; svc-gate@telcordia.com; swargo@rhythms.net; talleylinda@mindspring.com; tami.m.swenson@accenture.com; Tanya.Finney@espire.net; Tara.Odems@allegiancetelecom.com; TAYLORJG@LCI.COM; taziz@epicus.com; tfry@commsouth.net; Tim@excleron.com; timw@networkonecom.com; Travis.Tindal@om1.al.bst.bls.com; TJStokes@trivergent.com; Tlescuero@idstelcom.com; tmontemayer@mantiss.com; tntel@bellsouth.net; Todd@CSII.net; tom.hyde@Cbeyond.net; tonyam@communitytelephone.com; trsmith@trivergent.com; ts1336@sbc.com; TThompson2@broadband.att.com; Tyra.Hush@wcom.com; usfloridaoss@kpmg.com; valarie_reck@globalcrossing.com; wendy.hernandez@comporium.com; WFletcher@birch.com; wmknapak@Intermedia.com; wolfsbrg@cris.com; Yvette.Brown@espire.net; Zachary.Baudoin@KMCTELECOM.com; bellsouth@nightfire.com; Cain,Donna - NCAM; cschneider@concretio.com; Lianne.Griffin@BellSouth.com; ssarem@mpowercom.com; pwilson@mpowercom.com; Debbie.Timmons@om1.al.bst.bls.com; Bill.York@wcom.com; donaldsond@epb.net; jason@basicphone.org; jerry.hill@accesscomm.com; scott.emener@accesscomm.com; kcaudill@idstelcom.com; BSNotes@talk.com; Nancy.Welsh@espire.net; tagteam@telexcelpartners.com; james.d.tomlinson@xo.com; Jeannie.Seguina@adelphia.com; SCook@City.marietta.GA.US

Subject: need pre-order rules for Parsed CSR

BCCM:

Glad to see that TAG API 7.7 was finally posted on Friday however we still do not have all info needed.

When will the Pre-Order Business Rules for Parsed CSRs be issued/posted as they are not covered in the two docs posted below?

#1 BellSouth Pre-Order Business Rules Nov 2001 - Version 11 D

#2 BellSouth Pre-Order Business Rules - Data Dictionary Nov 2001 - Version 7C

Bernadette Seigler
District Manager
AT&T Local Services & Access Management
So. Region OSS Interconnection
V: 404-810-8956
F: 404-810-8605
Pager: 888-858-7243 Pin: 125159

Attachment 5

Summary of Open PCSR Defect Workarounds
(February 21, 2002)

| CR Number | Date Submitted | Date of Workaround* | Summary of Workaround |
|------------------|-----------------------|----------------------------|--|
| CR 0633 | 01/31/02 | 2/15/02 | Obtain and review an unparsed record to check that data for all trunks is the same |
| CR 0634 | 01/31/02 | 2/15/02 | The CLEC should remove the hyphen before submitting their LSR (This will still result in an incorrect LSR) |
| CR 0635 | 01/31/02 | 2/15/02 | Data is informational only, no workaround required |
| CR 0636 | 01/31/02 | 2/15/02 | CLEC reformat the affected fields using the example in the defect change request |
| CR 0637 | 01/31/02 | 2/15/02 | Obtain and review an unparsed record |
| CR 0638 | 01/31/02 | 2/15/02 | Obtain and review an unparsed record |
| CR 0639 | 01/31/02 | 2/15/02 | Submit LSR, if rejected resubmit |

*** The CCP Defect process requires the publication of workarounds for defects classified as low impact within three business days.**

Attachment 6

Provision of CSR Fields in Parsed Format

| <i>CSR Field</i> | <i>BellSouth</i> | <i>Southwestern Bell Telephone ("SBC")</i> | <i>SBC (formerly Ameritech)</i> | <i>Verizon</i> |
|--|------------------|--|---|----------------|
| TOS -Type of Service | No | Yes | No | Yes |
| NAME -End User Name (not for directory delivery) | No | Yes | Yes | Yes |
| LST - Local Service Termination | No | Yes | Yes | No |
| DGOUT - DID Digits Out | No | Yes | Yes | Yes |
| HNTYP - Hunting Type | No | Yes | No | Yes |
| HTSEQ - Hunting Sequence | No | Yes | No | Yes |
| SGNL - Signaling | No | Yes | No | No |
| STYC - Style Code | No | Yes | Yes | Yes |
| TOA - Type of Account | No | Yes | Yes | No |
| LNPL - Listed Name Placement | No | Yes | Yes | No |
| BRO - Business/Residence Placement Override | No | Yes | Yes | Yes |

Attachment 7



Change Request Form

To be completed by BCCM only: Date Sent: 02/07/02

| | |
|--------------------------|---------|
| (1) CHANGE REQUEST LOG # | CR 0651 |
| (2) STATUS | S |

To be completed by CCM or BellSouth:

| | | | | |
|------------------|---|---|---------------------------------------|--|
| (3) REQUEST TYPE | <input checked="" type="checkbox"/> TYPE 2 (REGULATORY) | <input type="checkbox"/> TYPE 3 (INDUSTRY) | <input type="checkbox"/> TYPE 4 (BST) | <input type="checkbox"/> TYPE 5 (CLEC) |
| | <input type="checkbox"/> TYPE 6 (DEFECT) NOTE: COMPLETE SECTION 2 | <input type="checkbox"/> EXPEDITED FEATURE | <input type="checkbox"/> FLOW-THRU | |

SECTION 1

| | |
|--------------------------------|--|
| (4) COMPANY NAME | BellSouth |
| (5) OCN | |
| (6) CCM NAME | Brenda Files |
| (7) TELEPHONE NUMBER | 205 321 2105 |
| (8) CCM EMAIL ADDRESS | |
| (9) CCM FAX NUMBER | 205 321 5160 |
| (10) ALTERNATE CCM NAME | |
| (11) ALTERNATE PHONE NUMBER | |
| (12) ORIGINATOR'S NAME | William Aguila |
| (13) ORIGINATOR'S PHONE NUMBER | |
| (14) TITLE OF CHANGE REQUEST | Mandate FL DOCKET NO. 731 Translation of BST Hunting Information to LSOG4 format for Parsed CSR |

| | | |
|-----------------------|--|--|
| (15) CATEGORY | <input checked="" type="checkbox"/> ADD NEW FUNCTIONLITY | <input type="checkbox"/> CHANGE EXISTING |
| (16) DESIRED DUE DATE | 03/01/02 | |

Attachment A-1

Jointly Developed by the Change Control Sub-team comprised of BellSouth and CLEC Representatives.



Change Request Form

| | | | |
|---|--|--|--|
| (17) ORIGINATING CCM ASSESSMENT OF IMPACT | <input checked="" type="checkbox"/> HIGH | <input type="checkbox"/> MEDIUM | <input type="checkbox"/> LOW |
| (18) ORIGINATING CCM ASSESSMENT OF PRIORITY | <input type="checkbox"/> URGENT | <input checked="" type="checkbox"/> HIGH | <input type="checkbox"/> MEDIUM <input type="checkbox"/> LOW |

| | | | | |
|--------------------------|---------------------------------|---|--------------------------------|------------------------------|
| (19) INTERFACES IMPACTED | | | | |
| PRE-ORDERING | <input type="checkbox"/> LENS | <input checked="" type="checkbox"/> TAG | <input type="checkbox"/> CSOTS | |
| ORDERING | <input type="checkbox"/> EDI | <input type="checkbox"/> LENS | <input type="checkbox"/> TAG | <input type="checkbox"/> LNP |
| MAINTENANCE | <input type="checkbox"/> TAFI | <input type="checkbox"/> EC-TA Local | | |
| MANUAL | <input type="checkbox"/> Manual | | | |

| | | | | |
|--|---|---|-----------------------------------|---|
| (20) TYPE OF CHANGE (Check one or more, as applicable) | | | | |
| <input checked="" type="checkbox"/> Software | <input type="checkbox"/> Product & Services | <input checked="" type="checkbox"/> Documentation | <input type="checkbox"/> Hardware | <input type="checkbox"/> New or Revised Edits |
| <input checked="" type="checkbox"/> Regulatory | <input type="checkbox"/> Industry Standards | <input type="checkbox"/> Process | <input type="checkbox"/> Other | <input type="checkbox"/> Defect |
| <input type="checkbox"/> Expedited Feature | <input type="checkbox"/> Flow Through | | | |

| | |
|--|--|
| (21) DESCRIPTION OF REQUESTED CHANGE (Including purpose and benefit received from this change. Include attachments if available) | Translation of BST Hunting Information to LSOG4 format for Parsed CSR. |
| (22) REQ TYP(s) IMPACTED: | |
| (23) ACT TYP(s) IMPACTED: | |
| (24) PROVIDE EXAMPLE OF REQUESTED CHANGE: | |
| (25) Identify the LSOG versions that are affected by this change | |

This section to be completed by BellSouth only:

| | |
|---|---|
| (26) Does this request require clarification? | <input type="checkbox"/> YES <input checked="" type="checkbox"/> NO |
| (27) Clarification Request Sent | |
| (28) Clarification Response Due | |

| | |
|---------------------------------|--------------------|
| (29) Change Request Review Date | |
| (30) Target Implementation Date | 3/23/02 – Rel 10.4 |
| (31) Actual Implementation Date | |

Attachment A-1

Jointly Developed by the Change Control Sub-team comprised of BellSouth and CLEC Representatives.



Change Request Form

(32) Change Review Meeting Results 02/11/02 Mandate FL DOCKET NO 731 BellSouth changed request status to TYPE 2-Regulatory.

02/13/02 Scheduled for Release 10.4 on 3/23/02. Also updated description.

(33) CANCELED CHANGE REQUEST DUPLICATE TRAINING CLARIFICATION NOT RECEIVED
(34) CANCELANATION ACKNOWLEDGMENT CLEC BST **DATE:**

(35) APPEAL YES NO
(36) APPEAL CONSIDERATIONS

SECTION 2

This section to be completed by CLEC/BellSouth- External Explanation of Type 6 Defect Change Request

(37) PON #
(38) ERROR MESSAGE:
(39) RELEASE OR API VERSION (If applicable)
(40) DESCRIPTION OF DEFECT SCENARIO:

SECTION 3

This section to be completed by BellSouth - Internal Validation of Defect Change Request

(41) DEFECT VALIDATION RESULTS:
(42) CLARIFICATION NEEDED: YES NO
(43) VALIDATED DEFECT IMPACT LEVEL: HIGH MEDIUM LOW
(44) VALIDATION TYPE: DEFECT FEATURE TRAINING ISSUE DUPLICATE
(45) DEFECT IMPACTS OTHER CLECS? YES NO
(46) INTERFACES IMPACTED BY DEFECT: EDI TAG LNP LENS
 TCIF 7 TCIF 9
(47) TARGET IMPLEMENTATION DATE:
(48) ACTUAL IMPLEMENTATION DATE:

Attachment A-1

Jointly Developed by the Change Control Sub-team comprised of BellSouth and CLEC Representatives.



Change Request Form

Attachment A-4A

Jointly Developed by the Change Control Sub-team comprised
of BellSouth and CLEC Representatives.

Attachment 8



Change Request Form

To be completed by BCCM only: Date Sent: 02/07/02

| |
|---|
| (1) CHANGE REQUEST LOG # CR 0652 |
| (2) STATUS N |

To be completed by CCM or BellSouth:

| | | | | |
|-------------------------|--|---|--|---|
| (3) REQUEST TYPE | <input checked="" type="checkbox"/> TYPE 2 (REGULATORY) | <input type="checkbox"/> TYPE 3 (INDUSTRY) | <input type="checkbox"/> TYPE 4 (BST) | <input type="checkbox"/> TYPE 5 (CLEC) |
| | <input type="checkbox"/> TYPE 6 (DEFECT) NOTE: COMPLETE SECTION 2 | <input type="checkbox"/> EXPEDITED FEATURE | <input type="checkbox"/> FLOW-THRU | |

SECTION 1

| | |
|---------------------------------------|--|
| (4) COMPANY NAME | BellSouth |
| (5) OCN | |
| (6) CCM NAME | Brenda Files |
| (7) TELEPHONE NUMBER | 205 321 2105 |
| (8) CCM EMAIL ADDRESS | |
| (9) CCM FAX NUMBER | 205 321 5160 |
| (10) ALTERNATE CCM NAME | |
| (11) ALTERNATE PHONE NUMBER | |
| (12) ORIGINATOR'S NAME | William Aguila |
| (13) ORIGINATOR'S PHONE NUMBER | |
| (14) TITLE OF CHANGE REQUEST | Mandate FL-DOCKET NO 731 Translate and Parse data for the following information on CSR (TOA, BRO, STYC, DGOUT) |

| | | |
|------------------------------|---|---|
| (15) CATEGORY | <input checked="" type="checkbox"/> ADD NEW FUNCTIONLITY | <input type="checkbox"/> CHANGE EXISTING |
| (16) DESIRED DUE DATE | 03/01/02 | |

Attachment A-1

Jointly Developed by the Change Control Sub-team comprised of BellSouth and CLEC Representatives.



Change Request Form

| | | | |
|---|--|--|--|
| (17) ORIGINATING CCM ASSESSMENT OF IMPACT | <input checked="" type="checkbox"/> HIGH | <input type="checkbox"/> MEDIUM | <input type="checkbox"/> LOW |
| (18) ORIGINATING CCM ASSESSMENT OF PRIORITY | <input type="checkbox"/> URGENT | <input checked="" type="checkbox"/> HIGH | <input type="checkbox"/> MEDIUM <input type="checkbox"/> LOW |

| | | | | |
|---------------------------------|---------------------------------|---|--------------------------------|------------------------------|
| (19) INTERFACES IMPACTED | | | | |
| PRE-ORDERING | <input type="checkbox"/> LENS | <input checked="" type="checkbox"/> TAG | <input type="checkbox"/> CSOTS | |
| ORDERING | <input type="checkbox"/> EDI | <input type="checkbox"/> LENS | <input type="checkbox"/> TAG | <input type="checkbox"/> LNP |
| MAINTENANCE | <input type="checkbox"/> TAFI | <input type="checkbox"/> EC-TA Local | | |
| MANUAL | <input type="checkbox"/> Manual | | | |

(20) TYPE OF CHANGE (Check one or more, as applicable)

| | | | | |
|--|---|---|-----------------------------------|---|
| <input checked="" type="checkbox"/> Software | <input type="checkbox"/> Product & Services | <input checked="" type="checkbox"/> Documentation | <input type="checkbox"/> Hardware | <input type="checkbox"/> New or Revised Edits |
| <input checked="" type="checkbox"/> Regulatory | <input type="checkbox"/> Industry Standards | <input type="checkbox"/> Process | <input type="checkbox"/> Other | <input type="checkbox"/> Defect |
| <input type="checkbox"/> Expedited Feature | <input type="checkbox"/> Flow Through | | | |

| | |
|---|---|
| (21) DESCRIPTION OF REQUESTED CHANGE (Including purpose and benefit received from this change. Include attachments if available) | Mandate FL-DOCKET NO. 731 Translate and Parse data for the following information on CSR (TOA, BRO, STYC, DGOUT). Update to parse CSR document to parse these additional fields. |
| (22) REQ TYP(s) IMPACTED: | |
| (23) ACT TYP(s) IMPACTED: | |
| (24) PROVIDE EXAMPLE OF REQUESTED CHANGE: | |
| (25) Identify the LSOG versions that are affected by this change | |

This section to be completed by BellSouth only:

| | |
|--|---|
| (26) Does this request require clarification? | <input type="checkbox"/> YES <input checked="" type="checkbox"/> NO |
| (27) Clarification Request Sent | |
| (28) Clarification Response Due | |

| | |
|---|--------------------------------------|
| (29) Change Request Review Date | |
| (30) Target Implementation Date | |
| (31) Actual Implementation Date | |
| (32) Change Review Meeting Results | 02/07/02 Being reviewed by BellSouth |

Attachment A-1



Change Request Form

| | |
|--|--|
| | 02/12/02 BellSouth changed this request to a Type 2 Regulatory. 02/13/02 Updated description. |
|--|--|

| | | | |
|-----------------------------------|------------------------------------|-----------------------------------|---|
| (33) CANCELED CHANGE REQUEST | <input type="checkbox"/> DUPLICATE | <input type="checkbox"/> TRAINING | <input type="checkbox"/> CLARIFICATION NOT RECEIVED |
| (34) CANCELANATION ACKNOWLEDGMENT | <input type="checkbox"/> CLEC | <input type="checkbox"/> BST | DATE: |

| | | |
|----------------------------|------------------------------|-----------------------------|
| (35) APPEAL | <input type="checkbox"/> YES | <input type="checkbox"/> NO |
| (36) APPEAL CONSIDERATIONS | | |

SECTION 2

This section to be completed by CLEC/BellSouth- External Explanation of Type 6 Defect Change Request

| | |
|--|--|
| (37) PON # | |
| (38) ERROR MESSAGE: | |
| (39) RELEASE OR API VERSION (If applicable) | |
| (40) DESCRIPTION OF DEFECT SCENARIO: | |

SECTION 3

This section to be completed by BellSouth - Internal Validation of Defect Change Request

| | |
|-------------------------------------|---|
| (41) DEFECT VALIDATION RESULTS: | |
| (42) CLARIFICATION NEEDED: | <input type="checkbox"/> YES <input type="checkbox"/> NO |
| (43) VALIDATED DEFECT IMPACT LEVEL: | <input type="checkbox"/> HIGH <input type="checkbox"/> MEDIUM <input type="checkbox"/> LOW |
| (44) VALIDATION TYPE: | <input type="checkbox"/> DEFECT <input type="checkbox"/> FEATURE <input type="checkbox"/> TRAINING ISSUE <input type="checkbox"/> DUPLICATE |
| (45) DEFECT IMPACTS OTHER CLECS? | <input type="checkbox"/> YES <input type="checkbox"/> NO |
| (46) INTERFACES IMPACTED BY DEFECT: | <input type="checkbox"/> EDI <input type="checkbox"/> TAG <input type="checkbox"/> LNP <input type="checkbox"/> LENS <input type="checkbox"/> TCIF 7 <input type="checkbox"/> TCIF 9 |
| (47) TARGET IMPLEMENTATION DATE: | |
| (48) ACTUAL IMPLEMENTATION DATE: | |

Attachment A-1

Jointly Developed by the Change Control Sub-team comprised of BellSouth and CLEC Representatives.



Change Request Form

Attachment A-4A

Jointly Developed by the Change Control Sub-team comprised
of BellSouth and CLEC Representatives.

Attachment 9



FLORIDA COMMISSION WORKSHOP 2-18-02

PRE-ORDER:

- WHAT IS A PARSED CSR?
 - AS STATED IN TESTIMONY AND EX PARTE TO THE FCC, ITC^ADELTACOM DOES USE THE BELL SOUTH CUSTOMER SERVICE RECORD, TO POPULATE SOME ORDER INFORMATION FOR RESALE AND UNE-P NON-COMPLEX SERVICE REQUESTS.
 - LEVEL OF FUNCTIONS IS NOT EQUAL TO BELL SOUTH RETAIL EXPERIENCE, EXAMPLE IS THE PENDING ORDER FLAG
 - NO EDI PRE-ORDER TOOL EXISTS AT BELL SOUTH
 - THE ITC^ADELTACOM SOFTWARE CAN NOT SUPPORT COMPLEX PRODUCTS, NOR GENERATE LISTINGS. EXAMPLES OF ORDERS NOT SUPPORTED ARE CENTREX, ISDN, TRUNKS, EELS AND FACILITY BASED PRODUCTS.
- THE INITIAL SOFTWARE DESIGN WAS TO CONVERT EXISTING RESALE CUSTOMERS TO UNE-P, A SIMPLE BILLING CHANGE WHICH WAS TO BE TRANSPARENT TO OUR CUSTOMERS. THE CSR WAS USED TO VALIDATE THE ADDRESS AND THE ENGLISH VERSION OF THE USOC'S USED TO MATCH TO AN ITC^AD PRODUCT CODE. WE DO NOT USE USOCS AND FID'S OTHER THAN AS REQUIRED BY THE ILEC FROM WHICH SERVICES ARE BEING ORDERED AND OUR SYSTEMS DO NOT STORE.

BELL SOUTH'S CURRENT VERSION OF PARSED CSR HAS 25 DEFECTS IDENTIFIED BY BELL SOUTH AS BEING OUTSTANDING. CRITICAL TO ITC^AD IS THE HUNG DEFECT. ITC^AD HAS CR 222 STILL OUTSTANDING, WHERE BELL SOUTH RETURNS "UNKNOWN USOC" ON ITS OWN CODE. CR 498 IS A DEFECT WHERE SOME CSR'S ARE DISPLAYED IN LENS BUT NOT IN TAG. I'LL ADDRESS LATE POSTING OF CSR'S IN MY ORDERING COMMENTS, HOWEVER MANY RECORDS ARE NOT CURRENT.

ORDERING:

SINCE FIRST QUARTER OF 2001, ITC'D HAS EXPERIENCED ISSUES WITH THE HUNTING. WORK AROUNDS HAVE BEEN USED AT THE EXPENSE OF ITC'D. SOME EXAMPLES OF CR'S ARE: 462 HUNTING NOT MATCH CSR, 606 REQ TYP M HUNTING DEFECT, WHICH WAS SUBMITTED BY BST AND PROCESSED AS AN EXPEDITED FEATURE "BECAUSE NEGATIVELY IMPACTING CLEC'S END-USERS AND THE BILL". 651 IS A CR FOR TRANSLATION OF HUNTING TO LSOG 4 FOR PARSED CSR. CARRIER NOTIFICATION OF 2-8-02 STATES THE HA TABLES WILL BE UPDATED 3-1-02 FOR RESALE AND UNE-P. BELL SOUTH HAS BEEN AWARE OF THE DEFECT SINCE THE SPRING UNE-P WORKSHOP, SEE ITEM 27. ITC'D HAS HAD TO CALL BECAUSE ORDERS FELL OUT FOR CLARIFICATION, CSR'S POSTED INCORRECT USOC BILLING QUANTITIES, OR CUSTOMER'S SERVICE WAS IMPROPERLY PROVISIONED. BELL SOUTH DOES NOT DISCLOSE ITS EDI LINKAGES, FOR EXAMPLE ITC'D HAD A MAP THAT IMPROPERLY SENT LOGNUM THAT REQUIRES HUNTING PAGE, WE WERE UNABLE TO FIND ANY DOCUMENTATION DISCLOSING THESE TYPE OF EDITS.

AS WE NOTED IN THE LA WORKSHOP, CSR'S ARE INCORRECT AND LATE IN POSTING. IN THE PAST WE SENT BST A LIST EACH WEEK FOR THEIR CORRECTION. FOLLOWING THEIR RESTRUCTURE OF THE ACCOUNT TEAM, WE WERE ADVISED THIS WAS NO LONGER AN ACCEPTED METHOD OF DOING BUSINESS. WE WERE REQUIRED TO CALL OUR CORRECTIONS (THEIR ERRORS) TO THE LCSC NO MORE THAN FIVE PER CALL. WE LATER WERE ABLE TO ESCALATE THE ISSUE AND HAVE SINCE RETURNED TO SENDING THE LIST. APX. 30% OF OUR CORRECTIONS ARE HUNTING RELATED.

METRICS:

AS I TESTIFIED IN AL AND GA, WE BELIEVE THE BST DATA TO BE FLAWED. WE CURRENTLY ARE WORKING SPREADSHEETS OF PON'S WHICH DO NOT APPEAR IN THE RAW DATA FILES. BST'S SEEM AND PMAP SUBJECT MATTER EXPERTS ARE WORKING WITH US TO DETERMINE WHY DIFFERENCES EXIST.

Attachment 10

BellSouth's Count of LSRs in its "Double FOC" Analysis is Inaccurate

| RESALE | | | | | |
|----------------------------------|----------------------------------|---------------------------------|------------------------------|---|---------|
| Period | FT Report Residence Resale | FT Report Business Resale | FT Report Resale Total | BellSouth Data Resale Requests | Error |
| 9/1-9/30 Sep FT Report | 212,130 | 10,172 | 222,302 | 242,529 | +20,227 |
| 10/1 – 10/28 Oct FT Report | 266,809 | 14,367 | 281,176 | 242,248 | -38,928 |
| 10/29–11/27 Nov FT Report | 244,533 | 12,134 | 256,667 | 245,050 | -11,617 |
| 11/28-12/31 Dec FT Report | 221,718 | 9,724 | 231,442 | 265,032 | +33,590 |

| "UNE-P Requests"* | | | |
|----------------------------------|-----------------------|------------------------------------|---------|
| Period | FT Report All UNEs | BellSouth Data "UNE-P Requests" | Error |
| 9/1-9/30 Sep FT Report | 94,392 | 143,073 | +48,681 |
| 10/1 – 10/28 Oct FT Report | 117,270 | 98,242 | -19,028 |
| 10/29–11/27 Nov FT Report | 114,297 | 116,947 | +2,650 |
| 11/28-12/31 Dec FT Report | 119,789 | 158,939 | +39,150 |

* UNE-P Requests are a sub-set of the UNE LSRs reported on the FT report, therefore UNE-P Requests can never be greater than the number of UNE LSRs.

Attachment 11

OBSERVATION 146

BellSouth Florida OSS Testing Evaluation

Date: November 30, 2001

OBSERVATION REPORT

KPMG Consulting has identified an observation as a result of the POP Functional Evaluation (TVV1).

Observation:

KPMG Consulting has experienced a server error that disables the 'Calculate Due Date' function while processing Local Service Requests (LSRs) through RoboTAG. (TVV1)

Background:

BellSouth developed RoboTAG as an electronic interface software that combines Telecommunication Access Gateway (TAG) with a front-end Graphical User Interface (GUI). Accordingly, Competitive Local Exchange Carriers (CLECs) should be able to use RoboTAG for all ordering and pre-ordering functions that are currently electronically enabled.

Prior to submitting an LSR through RobTAG it is necessary to calculate the due date. This procedure validates the desired due date populated on the request. Once the due date is validated the request may be submitted to BellSouth.

When calculating the due date in RoboTAG, KPMG Consulting has received server errors stating that the due date cannot be calculated for the related service request. The following service requests received this server error prior to submission, preventing the due date from being successfully validated:

| PON | Ver | Date Submitted | Request Type (REQTYP) | Activity Type (ACT) | Line Activity (LNA) | The Server Error Message: |
|------------------|------------|-----------------------|------------------------------|----------------------------|----------------------------|--|
| 051021FPLK000016 | 1 | 11/06/01 | Loop/Port (MB) | Conversion to LSP (V) | Conversion as is (W) | "50: Cannot calculate a due date for orders with multiple service addresses" |
| 019011FPRN100026 | 0 | 11/06/01 | Resale (EB) | Conversion as is (W) | Prohibited | |

OBSERVATION 146
BellSouth Florida OSS Testing Evaluation

After receiving the error message listed above, a second attempt to calculate the due date was performed and generated a slightly different error message stating, "50: Cannot calculate due date. Due Date will be returned on the FOC."

Impact:

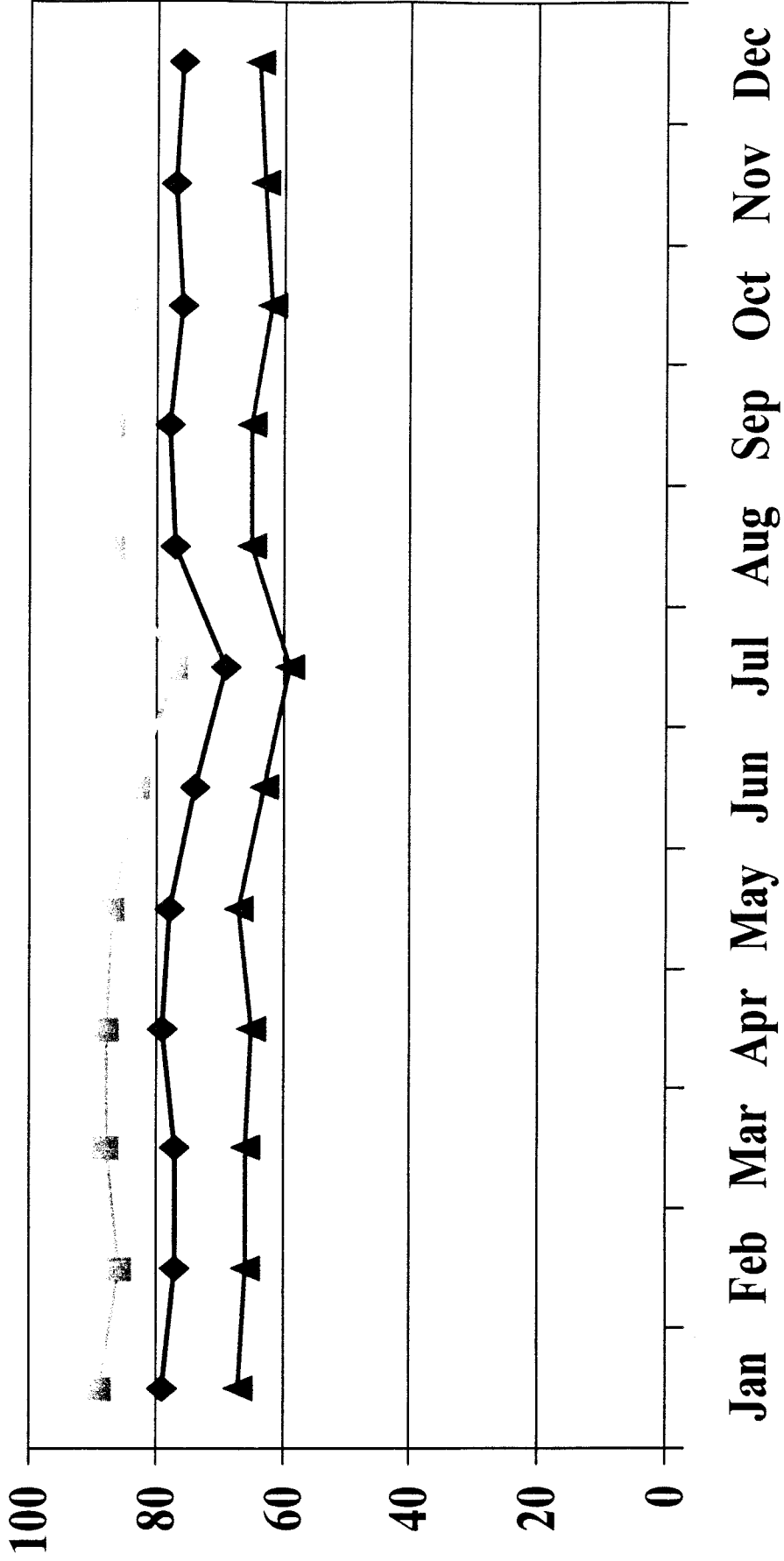
CLECs rely on the 'Calculate Due Date' function in RoboTAG to accurately communicate to customers a date in which their related service will be provisioned. The inability to successfully calculate due dates for service requests may increase operating costs, decrease customer satisfaction, and require additional CLEC resources to research solutions.

Attachment 12

There Was No Improvement in Flow Through in 2001

(Non-LNP Aggregate Results - Percent)

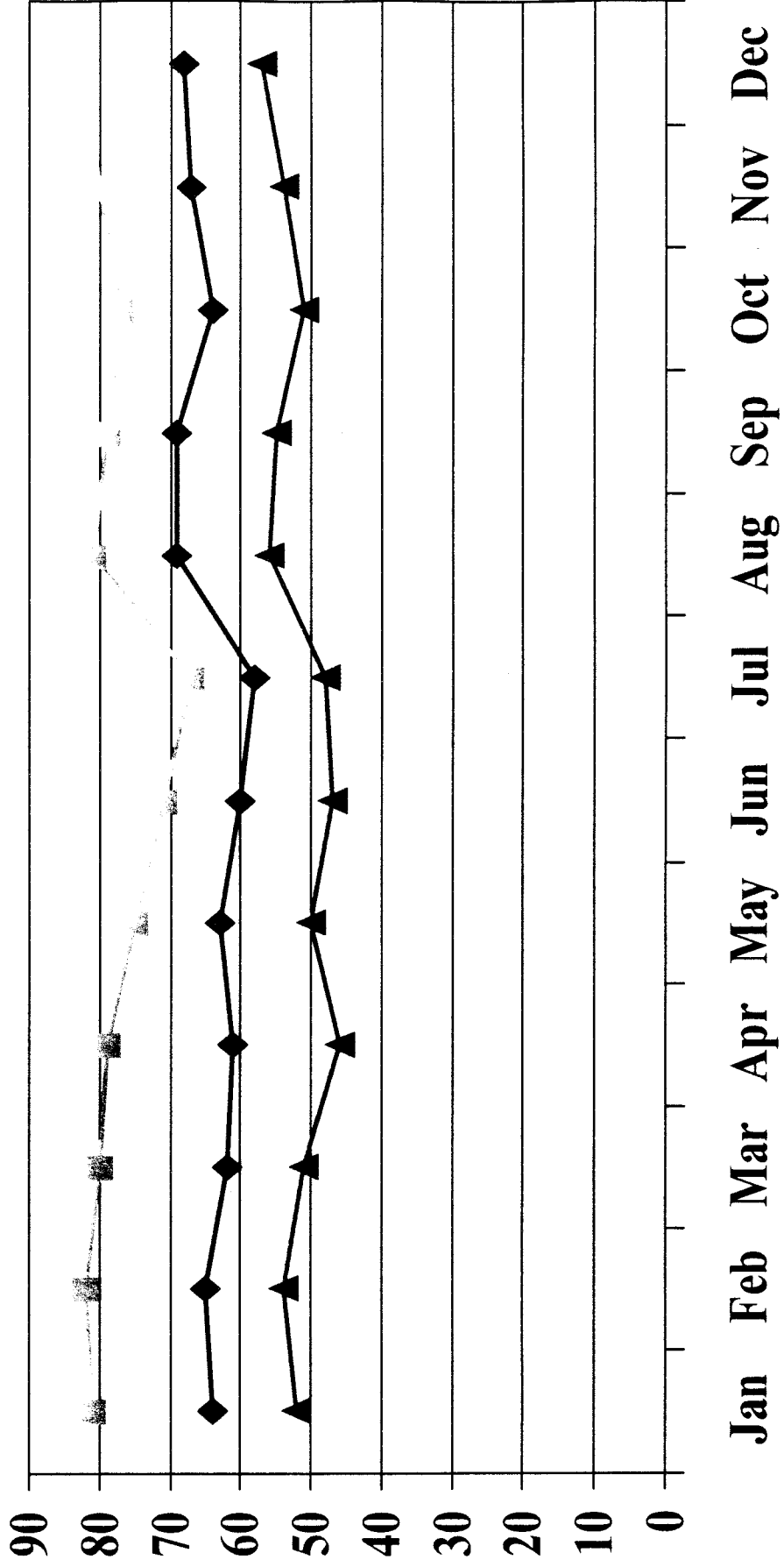
◆ "Achieved" ▲ "Flow Through" ▲ Issued SO



There Was No Improvement in Flow Through in 2001

(UNE Aggregate Results - Percent)

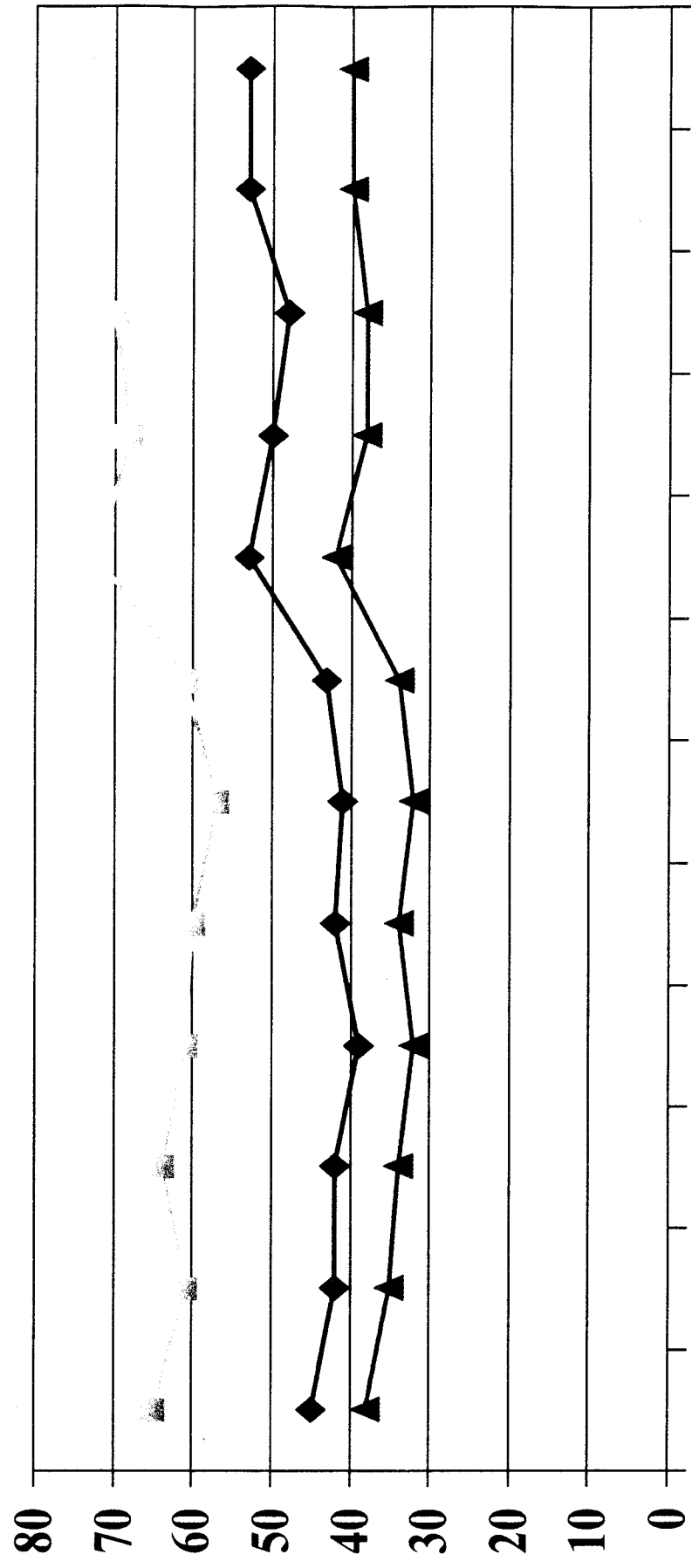
◆ "Achieved" ▲ "Flow Through" ▲ Issued SO



There Was No Improvement in Flow Through in 2001

(Business Aggregate Results - Percent)

◆ "Achieved" ▲ "Flow Through" ▲ Issued SO

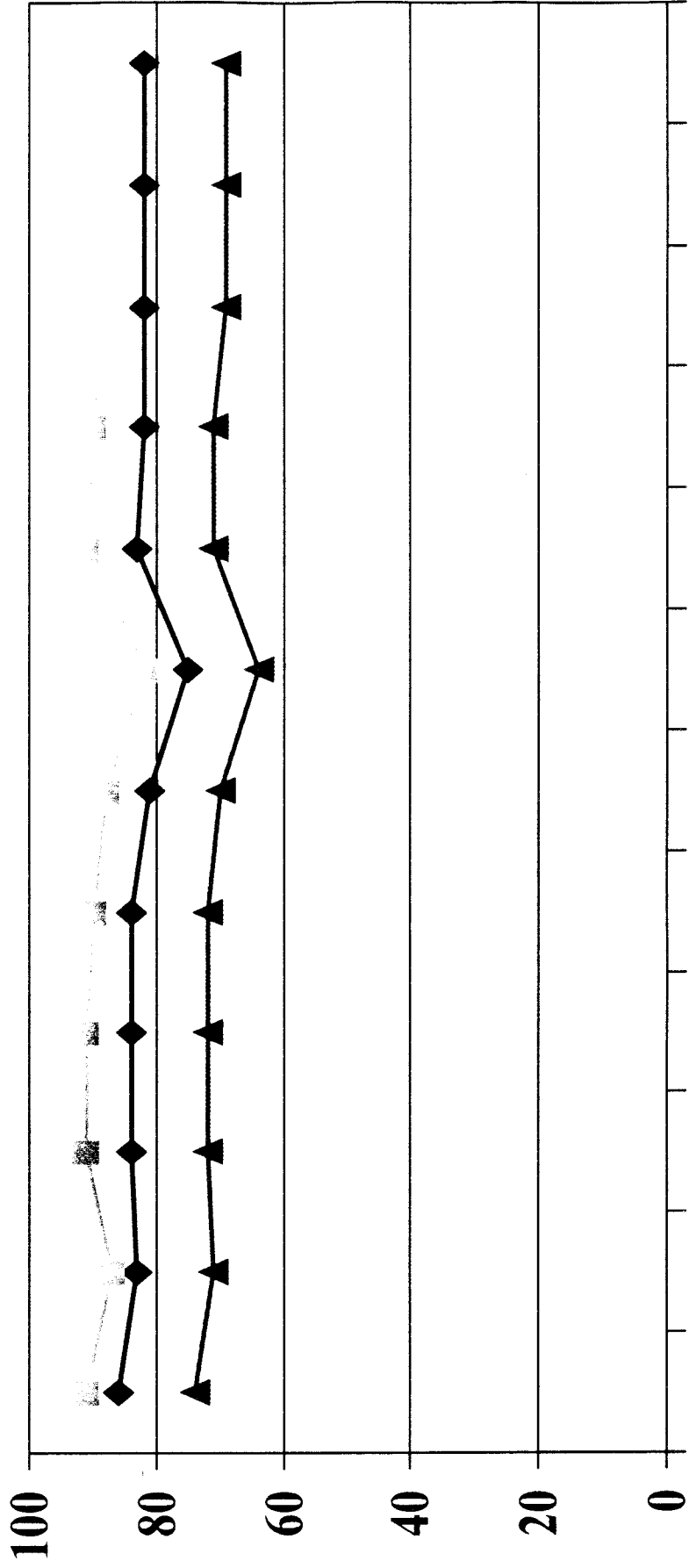


Jan Feb Mar Apr May Jun Jul Aug Sep Oct Nov Dec

There Was No Improvement in Flow Through in 2001

(Residence Aggregate Results - Percent)

◆ "Achieved" ▲ "Flow Through" ▲ Issued SO

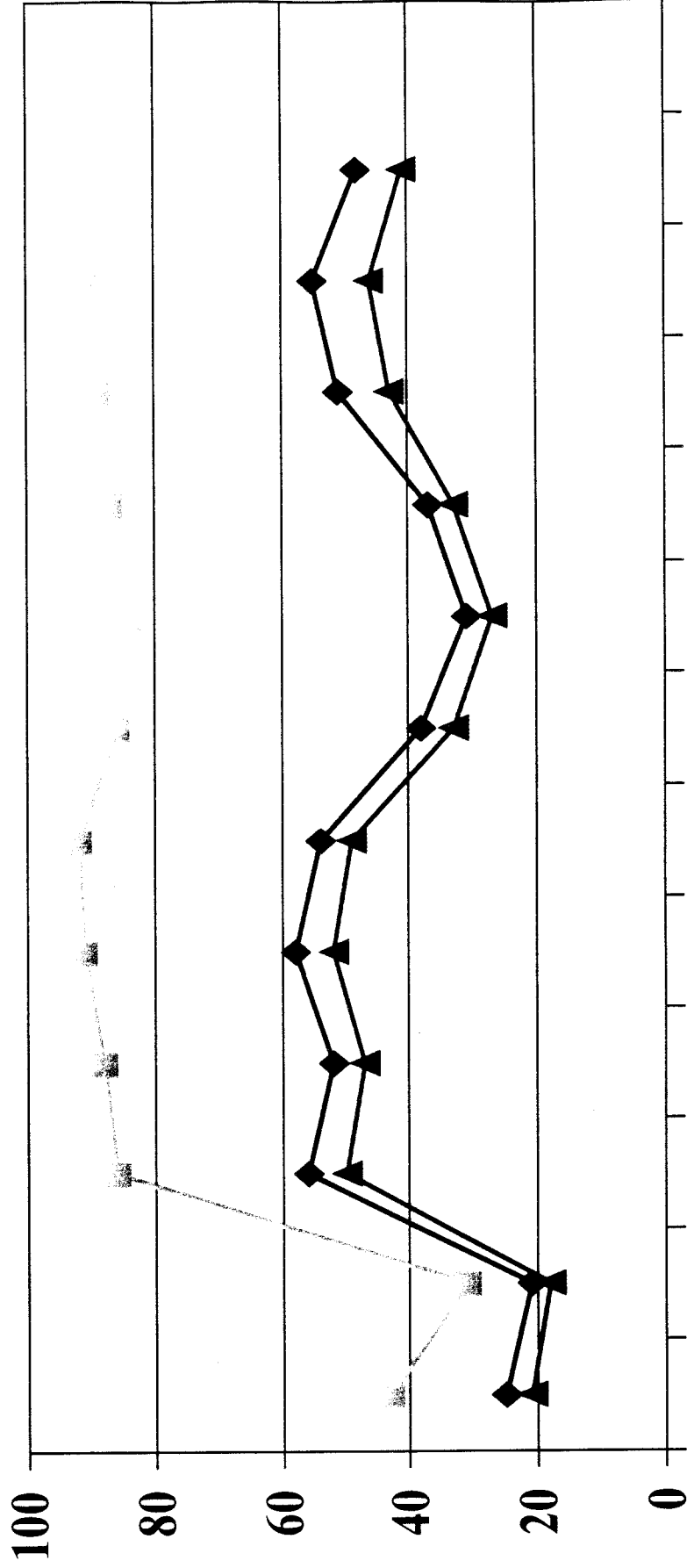


Jan Feb Mar Apr May Jun Jul Aug Sep Oct Nov Dec

There Was No Improvement in Flow Through in 2001

(LNP Results - Percent)

◆ "Achieved" ▲ "Flow Through" ◆ Issued SO



Jan Feb Mar Apr May Jun Jul Aug Sep Oct Nov Dec

BellSouth has stated that all LNP data prior to March 2000 was erroneous

Attachment 13

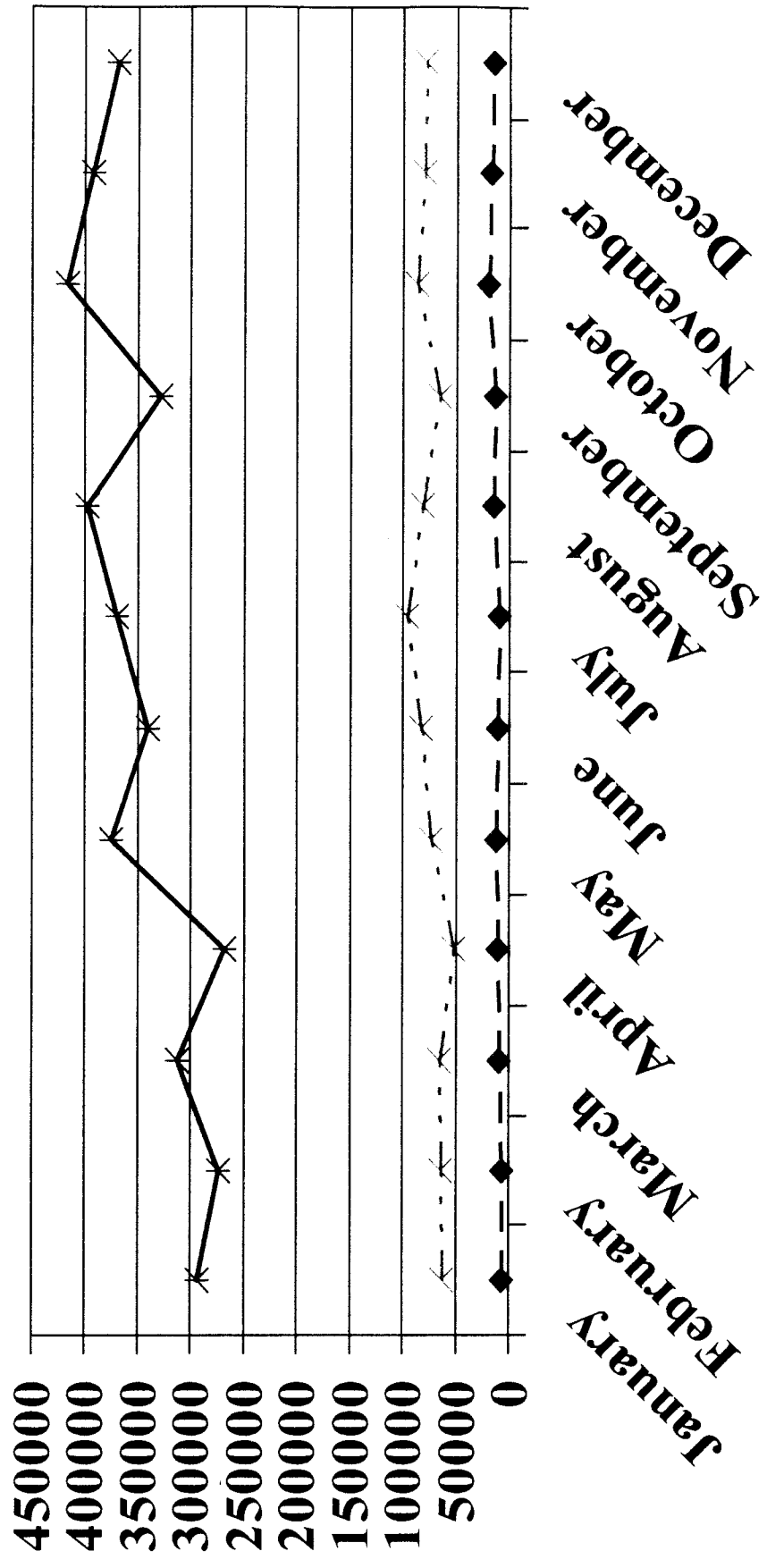
| | Jan, 2001 | Feb, 2001 | Mar, 2001 | Apr, 2001 | May, 2001 | Jun, 2001 | Jul, 2001 | Aug, 2001 | Sep, 2001 | Oct, 2001 | Nov, 2001 | Dec, 2001 |
|----------------|--------------|--------------|--------------|--------------|--------------|--------------|--------------|--------------|--------------|--------------|--------------|--------------|
| LENS LNP | NA | NA | NA | NA | NA | NA | NA | NA | NA | NA | NA | NA |
| LENS UNE | 27% | 26% | 26% | 25% | 25% | 29% | 22% | 25% | 24% | 29% | 32% | 35% |
| LENS BUS | 44% | 47% | 47% | 49% | 45% | 45% | 40% | 37% | 38% | 41% | 34% | 36% |
| LENS RES | 14% | 16% | 15% | 14% | 15% | 19% | 22% | 15% | 15% | 16% | 16% | 16% |
| LENS TOTAL | 18% | 19% | 18% | 18% | 18% | 22% | 23% | 18% | 18% | 19% | 19% | 21% |
| TAG LNP | 64% | 73% | 68% | 76% | 68% | 69% | 71% | 71% | 65% | 60% | 61% | 52%* |
| TAG UNE | 27% | 27% | 30% | 36% | 39% | 51% | 53% | 35% | 30% | 30% | 30% | 26% |
| TAG BUS | 52% | 59% | 65% | 57% | 57% | 55% | 42% | 48% | 40% | 39% | 37% | 43% |
| TAG RES | 9% | 14% | 14% | 12% | 14% | 11% | 16% | 8% | 11% | 11% | 11% | 11% |
| TAG TOTAL | 20% | 24% | 25% | 24% | 28% | 30% | 35% | 25% | 25% | 26% | 26% | 20%* |
| EDI LNP | 66% | 67% | 34% | 37% | 31% | 34% | 48% | 56% | 50% | 32% | 29% | 44% |
| EDI UNE | 50% | 40% | 52% | 34% | 28% | 32% | 30% | 21% | 22% | 26% | 20% | 18% |
| EDI BUS | 61% | 54% | 55% | 53% | 49% | 56% | 51% | 44% | 34% | 37% | 37% | 40% |
| EDI RES | 8% | 11% | 10% | 10% | 9% | 17% | 23% | 17% | 17% | 14% | 15% | 15% |
| EDI TOTAL | 43% | 40% | 25% | 21% | 17% | 26% | 29% | 24% | 24% | 23% | 20% | 23% |
| TOTAL LNP | 66% | 68% | 40% | 43% | 38% | 42% | 55% | 61% | 55% | 42% | 38% | 43% |
| TOTAL UNE | 29% | 29% | 31% | 30% | 30% | 35% | 31% | 25% | 24% | 28% | 27% | 27% |
| TOTAL BUS | 46% | 48% | 48% | 49% | 46% | 46% | 41% | 37% | 37% | 40% | 35% | 36% |
| TOTAL RES | 12% | 20% | 14% | 13% | 14% | 18% | 22% | 15% | 15% | 15% | 15% | 15% |
| GRAND TOTAL | 21% | 23% | 21% | 19% | 19% | 24% | 26% | 21% | 20% | 21% | 20% | 21% |

* The volume data for TAG LNP in December is inaccurate --- prior months were averaging 5-6000 orders, in December only 632 orders were reported. Thus the % values for TAG LNP and TAG TOTAL in December are potentially inaccurate.

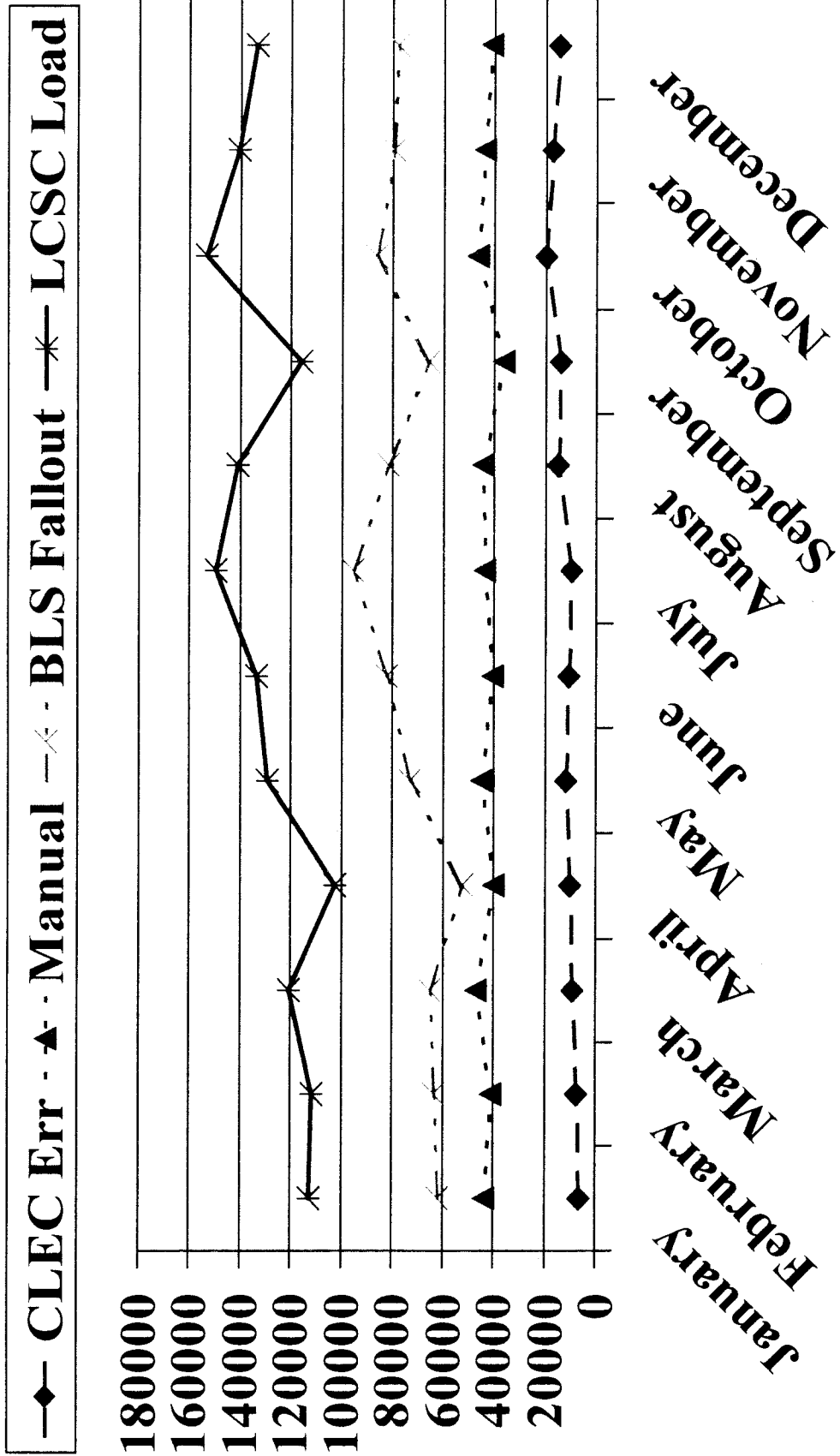
Attachment 14

Electronic LSR Volumes

—◆— CLEC Err —*— BLS Fallout —*— Elect LSRs



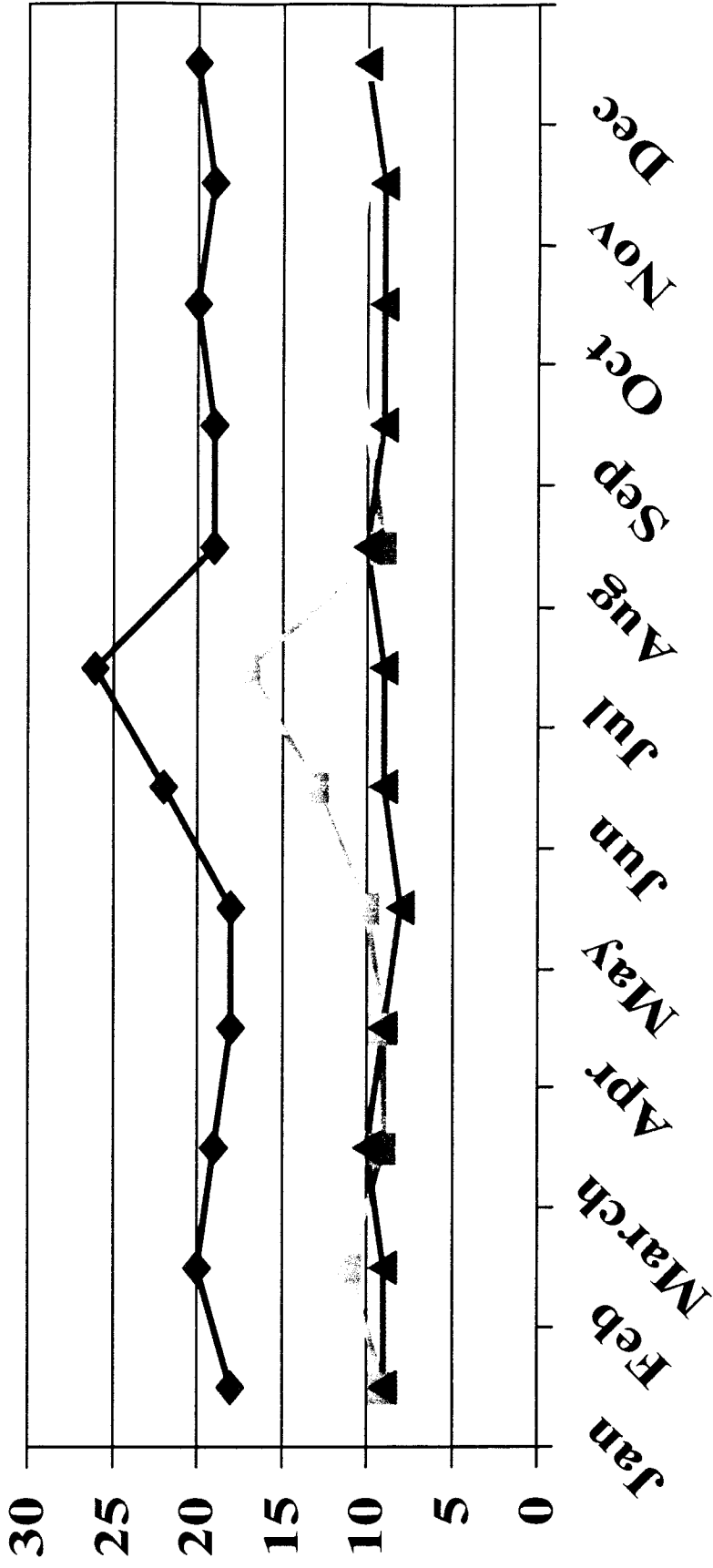
LCSC LSR Load Components



The Design and Operation of BellSouth's ALEC Ordering Interfaces Did Not Improve in 2001

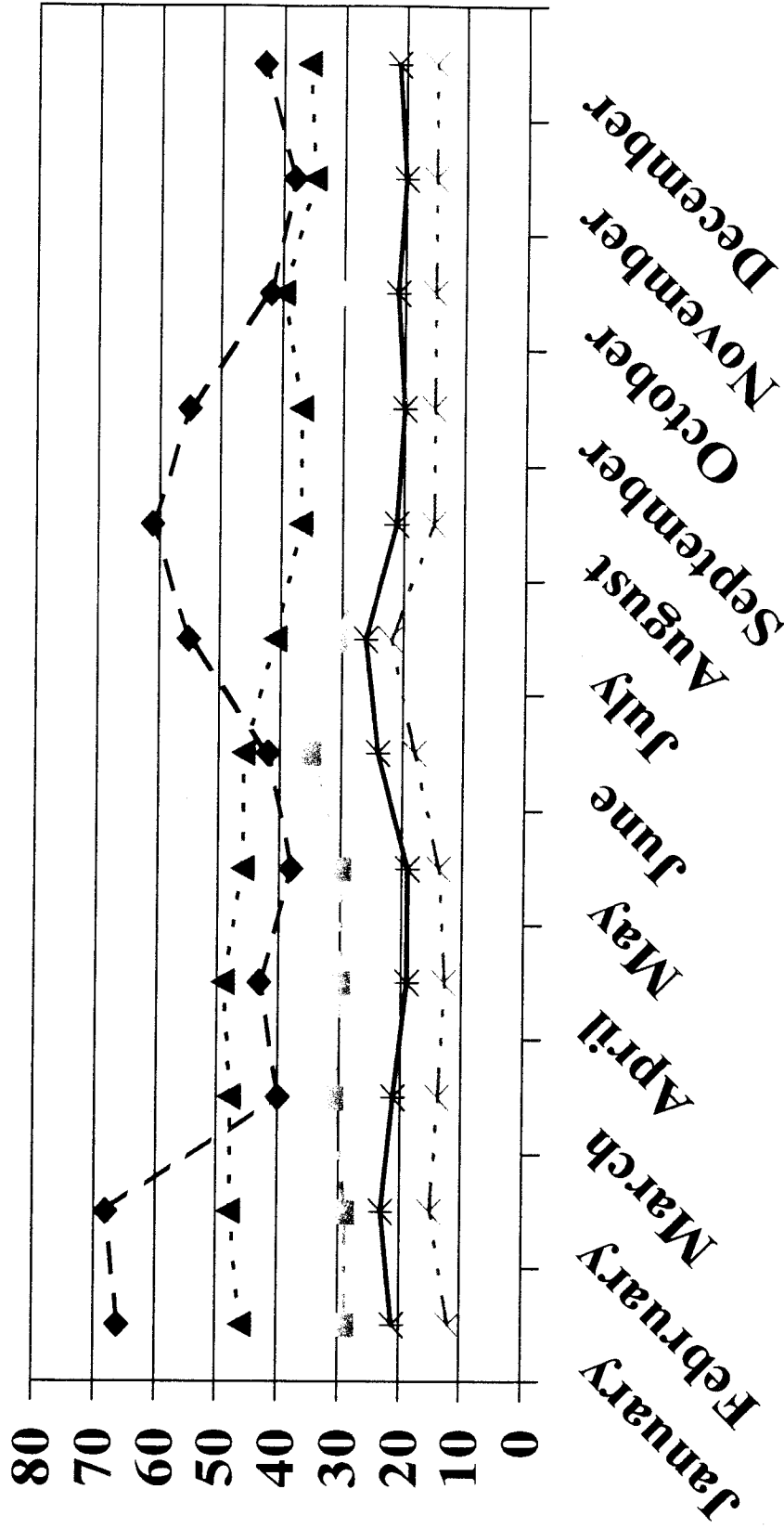
(Non-LNP Aggregate Results - Percent)

◆ Total Fallout ▲ BLS Error ▲ BLS Design



Percent Total Manual Fallout by Product

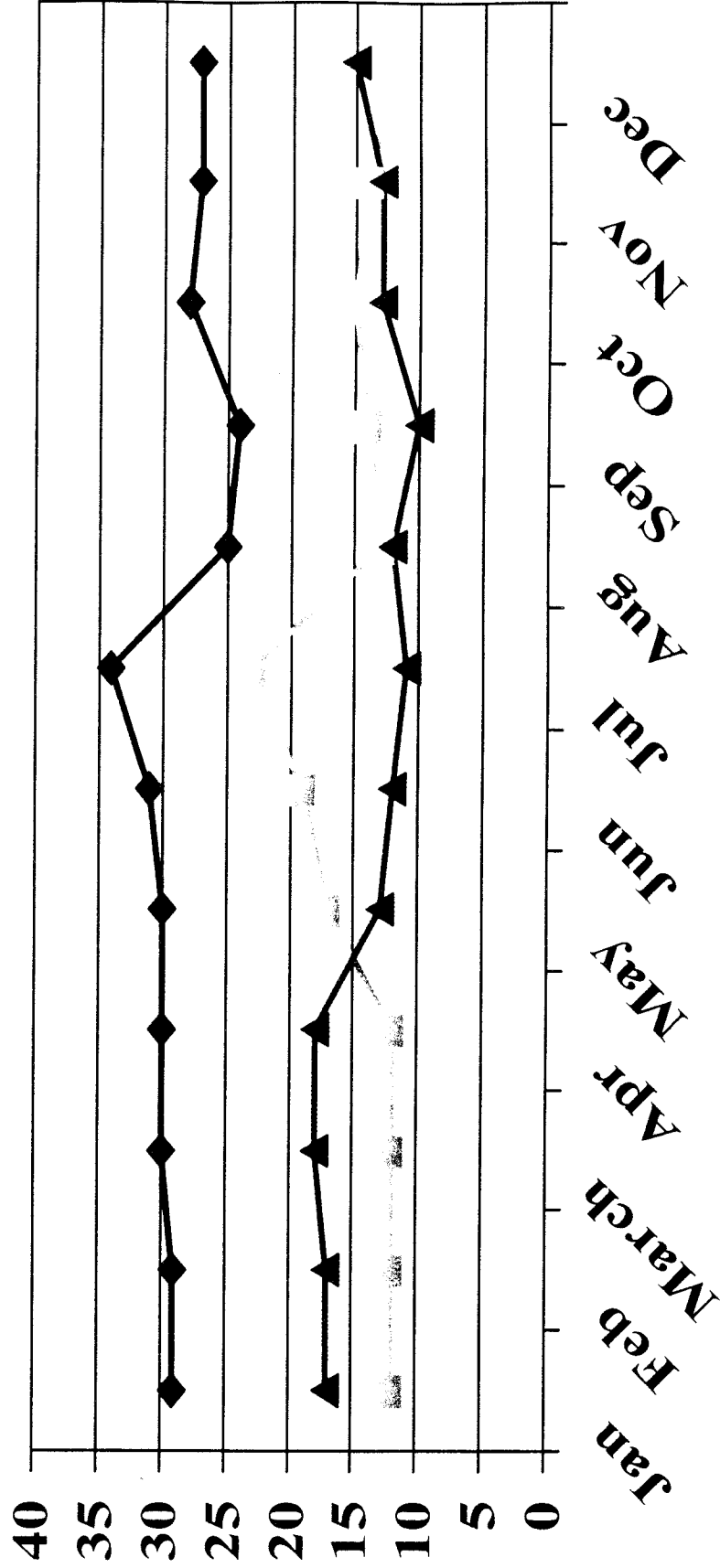
—◆— LNP —▲— BUS —*— RES —*— AGGR
 —◆— UNE —▲— RES —*— AGGR



The Design and Operation of BellSouth's ALEC Ordering Interfaces Did Not Improve in 2001

(UNE Aggregate Results - Percent)

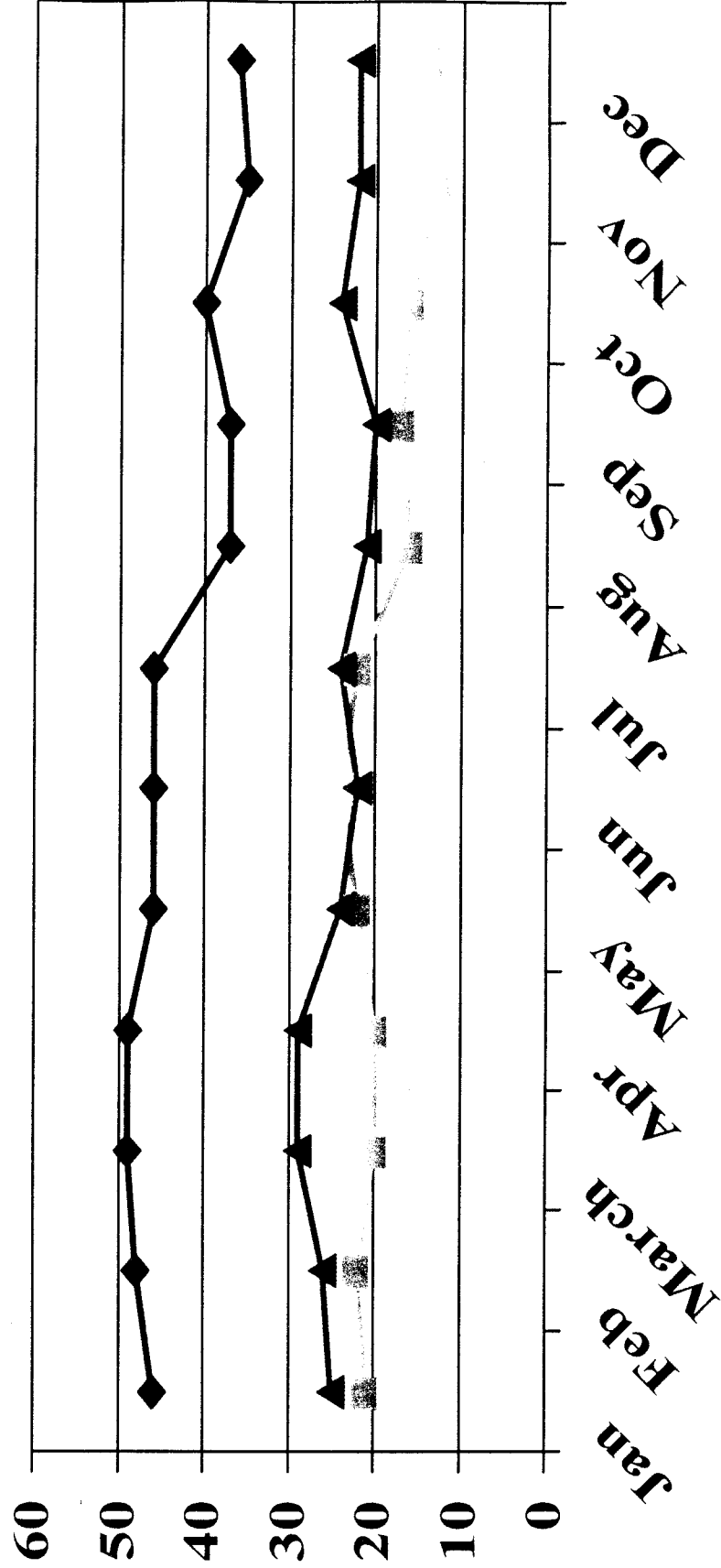
◆ Total Fallout ▲ BLS Error



The Design and Operation of BellSouth's ALEC Ordering Interfaces Did Not Improve in 2001

(Business Aggregate Results - Percent)

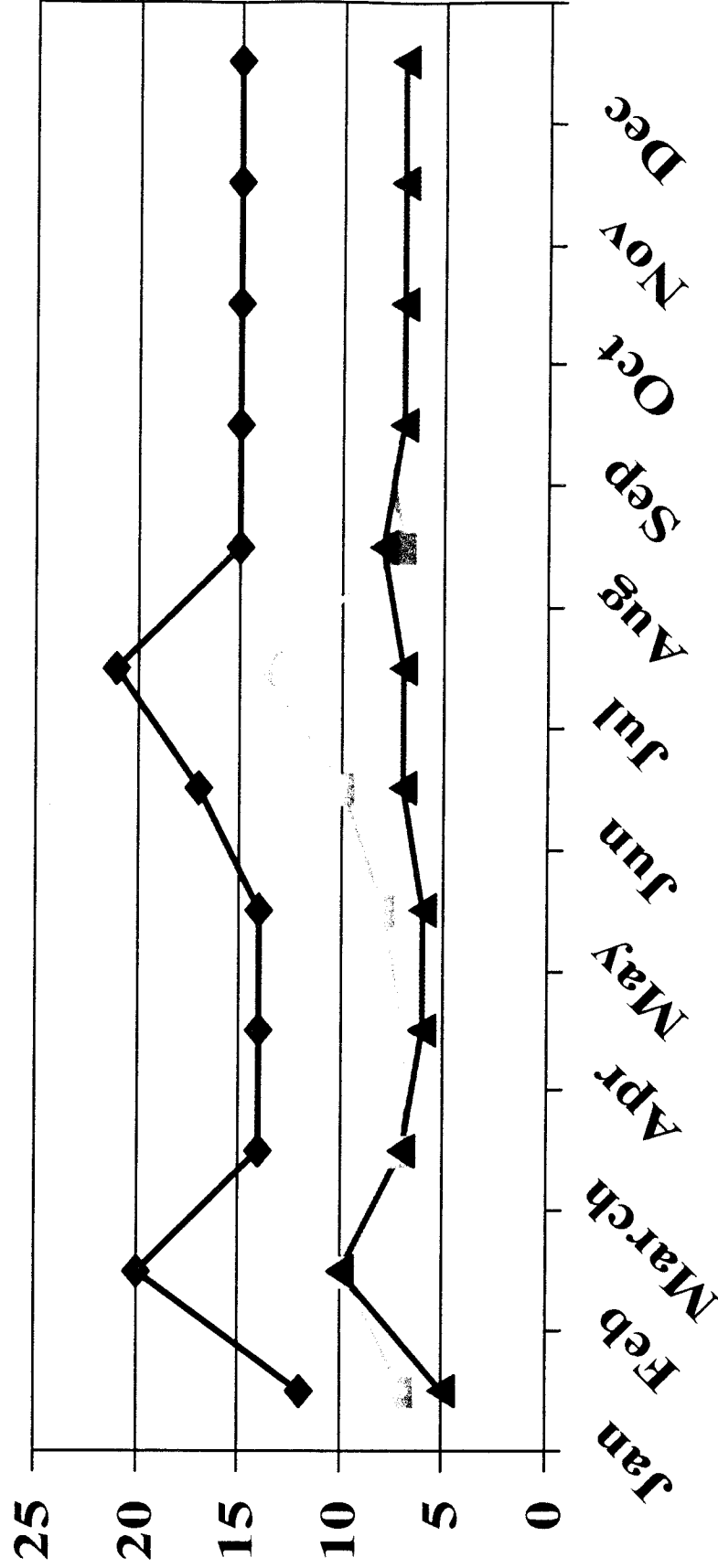
◆ Total Fallout ▲ BLS Error ▲ BLS Design



The Design and Operation of BellSouth's ALEC Ordering Interfaces Did Not Improve in 2001

(Residence Aggregate Results - Percent)

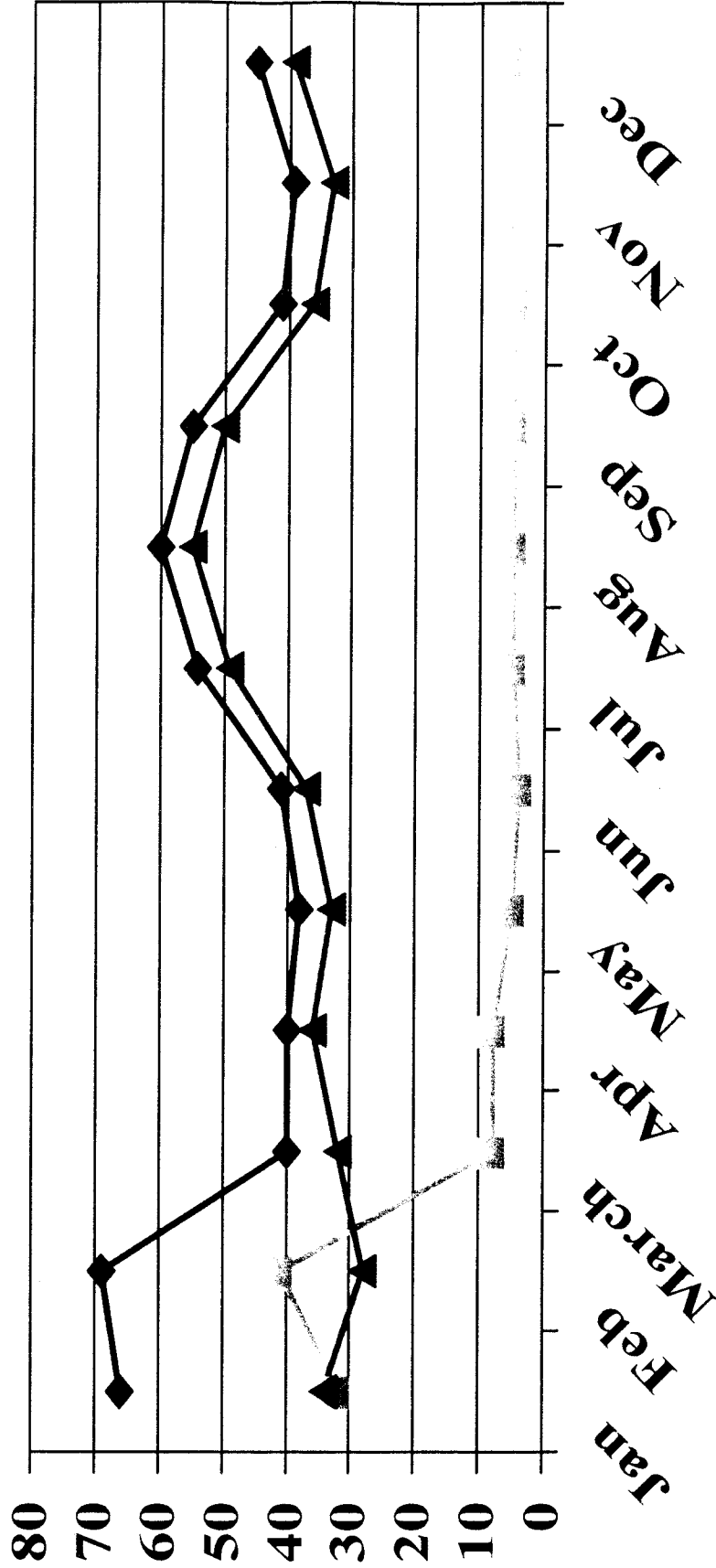
◆ Total Fallout BLS Error ▲ BLS Design



The Design and Operation of BellSouth's ALEC Ordering Interfaces Did Not Improve in 2001

(LNP Results - Percent)

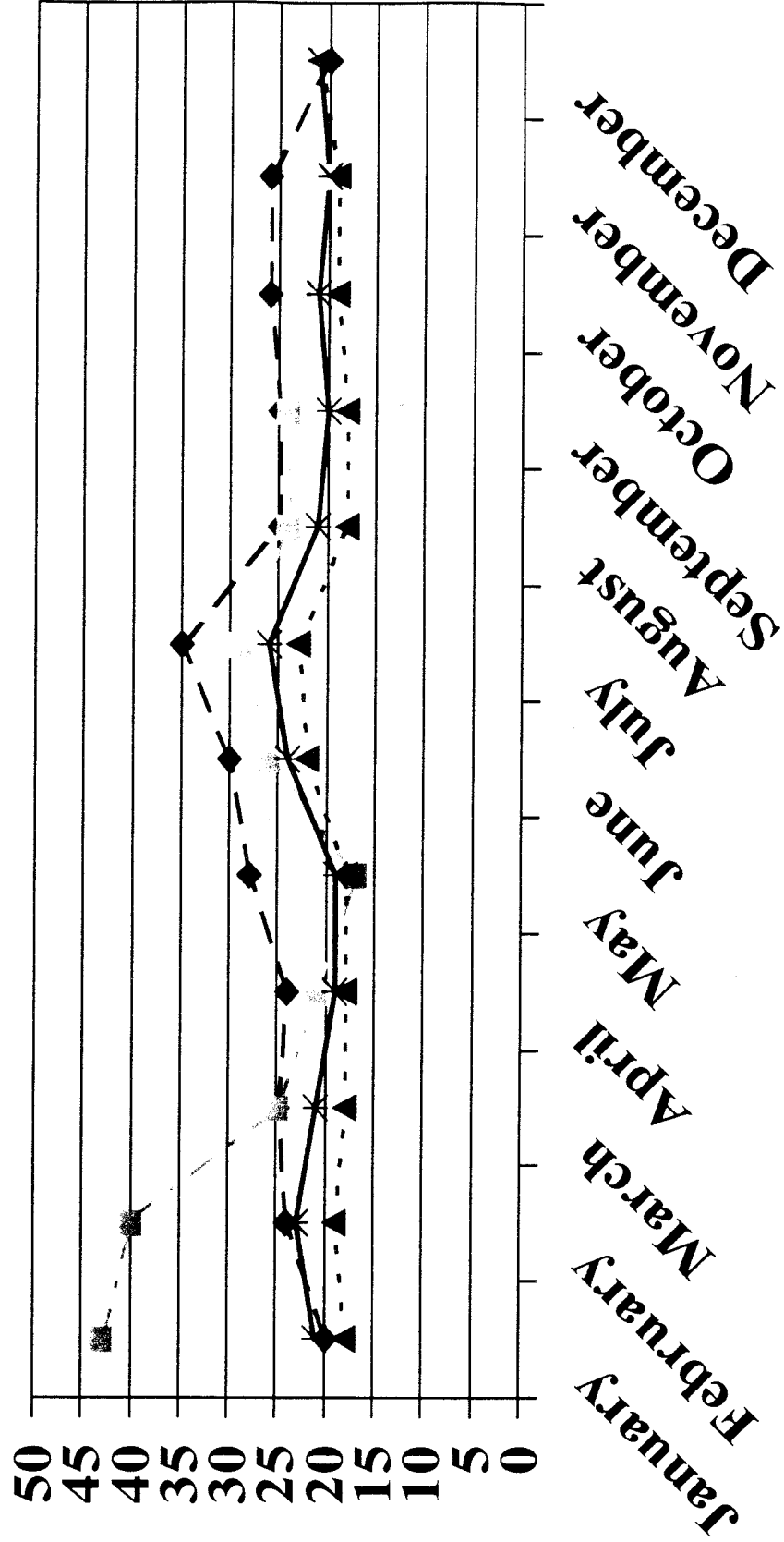
◆ Total Fallout ▲ BLS Error ▲ BLS Design



BellSouth has stated that all LNP data prior to March 2000 was erroneous

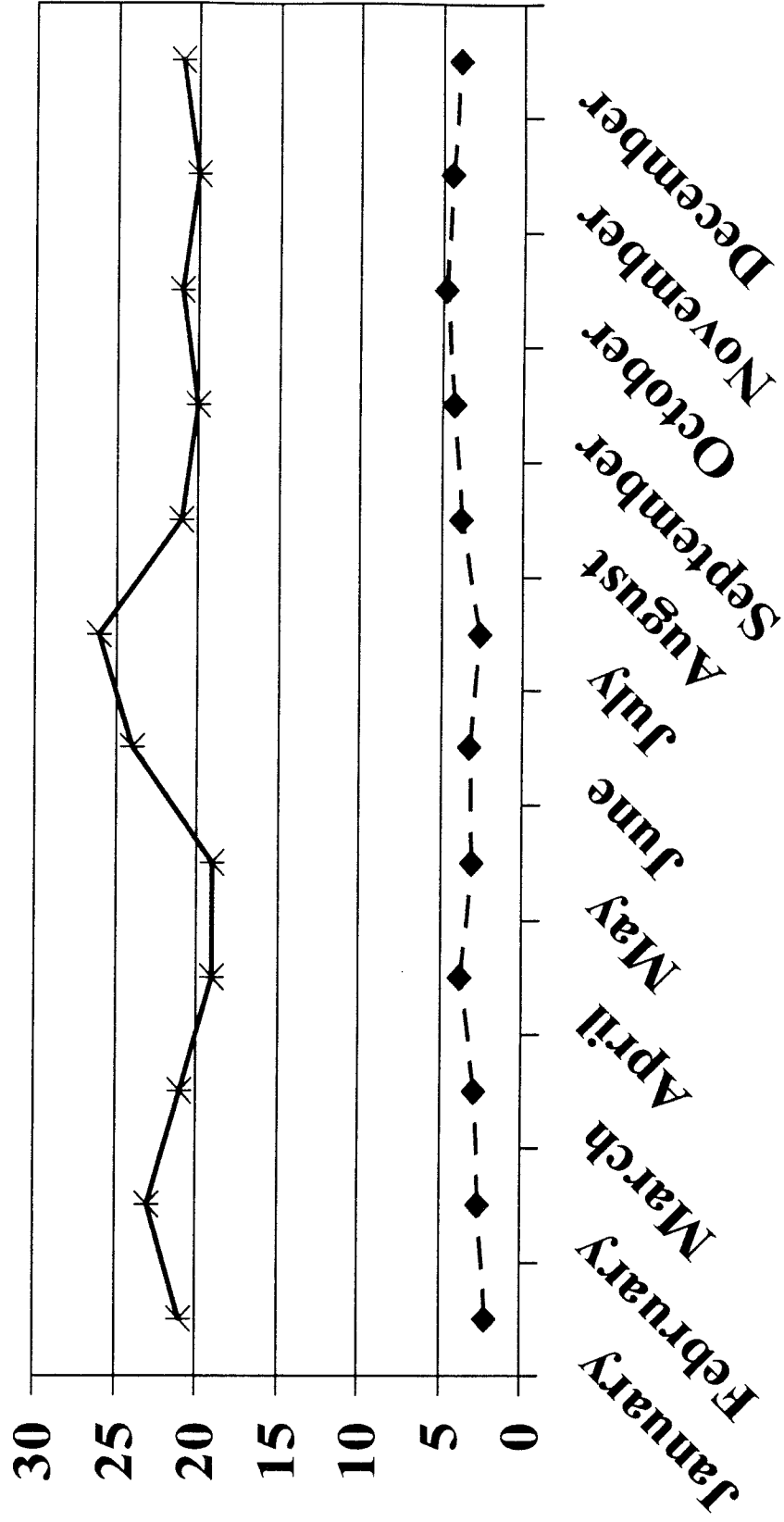
Percent Total Manual Fallout by Interface

—◆— TAG -·-·- EDI -▲- LENS -*- AGGR



Percent CLEC Error Vs. Percent Total Manual Fallout

—◆— CLEC Err —*— BLS Fallout



Attachment 15

High fallout rates provide the largest amount of load to the LCSC for manual processing

| BellSouth Ordering OSS | | | | | | | | | | | | |
|--|-----------|-----------|-----------|-----------|-----------|-----------|-----------|-----------|-----------|-----------|-----------|-----------|
| Total Manual Fallout is the Largest Component of LCSC Volume | | | | | | | | | | | | |
| | Jan, 2001 | Feb, 2001 | Mar, 2001 | Apr, 2001 | May, 2001 | Jun, 2001 | Jul, 2001 | Aug, 2001 | Sep, 2001 | Oct, 2001 | Nov, 2001 | Dec, 2001 |
| Electronic LSRs | 294,160 | 274,360 | 312,955 | 268,859 | 375,577 | 340,758 | 369,798 | 397,640 | 329,044 | 416,635 | 391,998 | 369,038 |
| Total BLS Fallout | 62,131 | 63,607 | 65,174 | 52,245 | 72,935 | 82,371 | 95,816 | 81,694 | 65,618 | 86,782 | 79,562 | 78,241 |
| % BLS Fallout | 21% | 23% | 21% | 19% | 19% | 24% | 26% | 21% | 20% | 21% | 20% | 21% |
| CLEC Error | 6,558 | 7,273 | 9,036 | 10,128 | 11,662 | 10,883 | 9,581 | 15,024 | 13,758 | 19,965 | 17,287 | 14,432 |
| % CLEC Error | 2.2% | 2.6% | 2.9% | 3.8% | 3.1% | 3.2% | 2.6% | 3.8% | 4.2% | 4.8% | 4.4% | 3.9% |
| Manual LSRs | 43,170 | 40,128 | 49,095 | 41,337 | 42,118 | 40,499 | 42,126 | 44,182* | 36,560* | 46,293* | 43,555* | 41,004* |
| Total BLS Fallout | 62,131 | 63,607 | 65,174 | 52,245 | 72,935 | 82,371 | 95,816 | 81,694 | 65,618 | 86,782 | 79,562 | 78,241 |
| CLEC Error | 6,558 | 7,273 | 9,036 | 10,128 | 11,662 | 10,883 | 9,581 | 15,024 | 13,758 | 19,965 | 17,287 | 14,432 |
| TOTAL LCSC | 111,859 | 111,008 | 123,305 | 103,710 | 126,715 | 133,753 | 147,523 | 140,900 | 115,936 | 153,040 | 140,404 | 133,677 |

* Estimated to be 10% of Total CLEC LSRs