

COMMONWEALTH OF KENTUCKY
BEFORE THE PUBLIC SERVICE COMMISSION

In the Matter of:

AN INVESTIGATION INTO THE)
ALLEGED DEFICIENCIES OF)
RIDGEWOOD SUBDIVISION SEWER) CASE NO. 9991
PLANT)

ORDER TO SHOW CAUSE

Ridgewood Subdivision Sewer Plant ("Ridgewood"), a business entity which operates a subdivision treatment facility plant used in the treatment of sewage for the public for compensation, is a utility as defined in KRS 278.010(3).

KRS 278.280 authorizes the Commission to prescribe rules for the performance of any service furnished or supplied by a utility. Pursuant to this authority, the Commission has promulgated a rule, codified at 807 KAR 5:071, Section 7, which requires sewage treatment facilities of a sewage utility to be constructed, installed, maintained and operated in accordance with accepted good engineering practice.

The Commission staff has submitted to the Commission a Utility Inspection Report, attached hereto as Appendix A, which alleges that:

1. On April 28, 1987, an inspection of the Ridgewood Subdivision Sewer Plant for compliance with the Commission's regulations was conducted.

2. The inspection revealed thirteen instances where the plant's maintenance and operation were not in accordance with accepted good engineering practices. A listing of these instances is contained in the Utility Inspection Report.

3. Six of the thirteen deficiencies noted existed when an inspection was conducted by the Commission Staff in October 1986 and have not yet been corrected.

4. Ridgewood violated 807 KAR 5:071, Section 7, by failing to maintain and operate its facility in accordance with accepted good engineering practices.

5. The owners and officers of Ridgewood, in their capacity as individuals, willfully violated 807 KAR 5:071, Section 7, by failing to maintain and operate its facility in accordance with accepted good engineering practices.

WHEREFORE, the Commission on its own Motion, hereby ORDERS that:

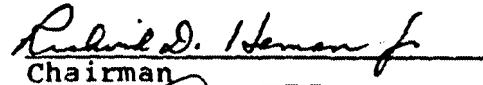
1. Ridgewood, and Mr. Jessie B. Marston, Mr. James E. Terrell, and all other officers of Ridgewood, in their official and individual capacities, shall appear before the Commission on September 24, 1987, at 9:00 a.m., Eastern Daylight Time, in the Commission's offices at Frankfort, Kentucky, for the purposes of presenting evidence concerning the maintenance and operation of the Ridgewood Sewage Treatment Plant, specifically the alleged violations of 807 KAR 5:071, Section 7, and of showing cause why they should not be subject to the penalties prescribed in KRS 278.990 for failure to comply with the Commission's regulations.

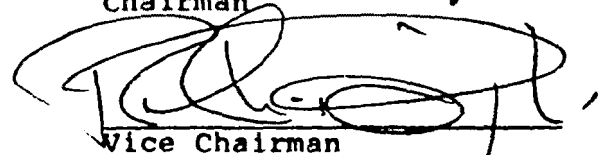
2. The Utility Inspection Report shall be and hereby is included as part of the record of this proceeding.

3. Ridgewood, Mr. Jessie B. Marston, Mr. James E. Terrell and all other officers of Ridgewood shall submit a written response to the allegations contained in the Utility Inspection Report by the close of business two weeks from the date of this Order.

Done at Frankfort, Kentucky, this 25th day of August, 1987.

PUBLIC SERVICE COMMISSION


Chairman


Vice Chairman


Commissioner

ATTEST:

Executive Director

APPENDIX A

Commonwealth of Kentucky
Public Service Commission

UTILITY INSPECTION REPORT

Ridgewood Subdivision Sewer Plant
Frankfort, Kentucky

May 6, 1987

Utility operations, utility maintenance, utility management and their impact on utility services and operating costs are a primary concern of the Commission and this Division. Our ongoing inspection program is to determine if the utility is in compliance with Kentucky Revised Statutes (KRS 278), Public Service Commission (PSC) Regulations (807 KAR) and that adequate, efficient and reasonable service is being provided.

Daily maintenance, daily operations and good operating records are essential in the operation of an efficient utility. Our inspections are intended to determine if the utility is in compliance with PSC regulations in these areas.

On April 28, 1987, Ridgewood Subdivision sewage treatment system was inspected for compliance with KRS 278 and PSC regulations (807 KAR). No person representing the utility was present during the inspection.

The improvements or corrections necessary to bring this facility into compliance with KRS 278 and PSC regulations (807 KAR) are as follows:

1. The hole in the fence next to the manhole needs to be repaired. (807 KAR 5:071, Section 7, 4)

Report - Ridgewood Subdivision

Sewer Plant

Page 2

May 6, 1987

2. The clarifier needs to be cleaned out. (807 KAR 5:071, Section 7, 1)
3. The water surrounding the sewage treatment plant needs to be removed. (807 KAR 5:071, Section 7, 1)
4. One skimmer in the clarifier needs to be repaired. (807 KAR 5:071, Section 7, 1)
5. The diffusers need to be inspected and repaired or replaced as necessary. (807 KAR 5:071, Section 7, 1)
6. The erosion around the manhole at the head of the plant needs to be repaired. (807 KAR 5:071, Section 7, 1)
7. The trough in the clarifier needs to be cleaned. (807 KAR 5:071, Section 7, 1)
8. One blower and motor is missing belts. This blower and motor needs to be made operational. (807 KAR 5:071, Section 7, 1)
9. The digester needs to be cleaned out. (807 KAR 5:071, Section 7, 1)
10. When flow from the lagoon to the chlorine contact chamber begins, chlorine treatment should start. (807 KAR 5:071, Section 7, 1)
11. The sewer line needs to be repaired. (807 KAR 5:071, Section 7, 1)
12. The sewage should not bypass the sewage treatment plant. (807 KAR 5:071, Section 7, 1)
13. The plant is currently being operated without a comminutor. As long as the plant can be operated satisfactorily and produce an acceptable effluent the Commission may not require the use of a comminutor. However, the utility must monitor plant operations and immediately install a functioning comminutor should conditions warrant. (807 KAR 5:071, Section 7, 1)

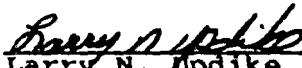
Report - Ridgewood Subdivision
Sewer Plant
Page 3
May 6, 1987

Recommendations

The repair or correction of the deficiencies listed above is necessary in order to restore this facility to an acceptable operating condition. The pertinent section of the Kentucky Administrative Regulations has been listed by each deficiency for your convenience. A written response should be prepared and forwarded to the Commission by June 1, 1987, outlining a correction schedule stating what has been completed or what will be done to correct each deficiency and the related cost of each correction. A starting date and a completion date should be given for corrections that are to be completed after the date this response is mailed.

The deficiencies listed as 1, 2, 3, 4, 5, and 6 are repeated from the October 1986 inspection of the Ridgewood Subdivision Sewer Plant. The utility has not corrected these deficiencies. We, the Commission staff feel that an appropriate amount of time to make these corrections has been allowed. It is therefore recommended that the Commission consider assessing penalties against the utility, its officers, and employees as provided by KRS 278.990.

Submitted,
May 6, 1987

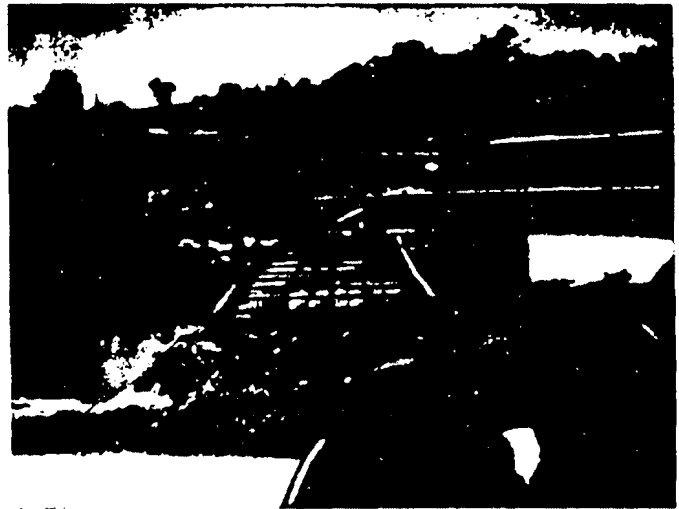

Larry N. Opdike
Utility Investigator

CGR:LNU:aem

EPF



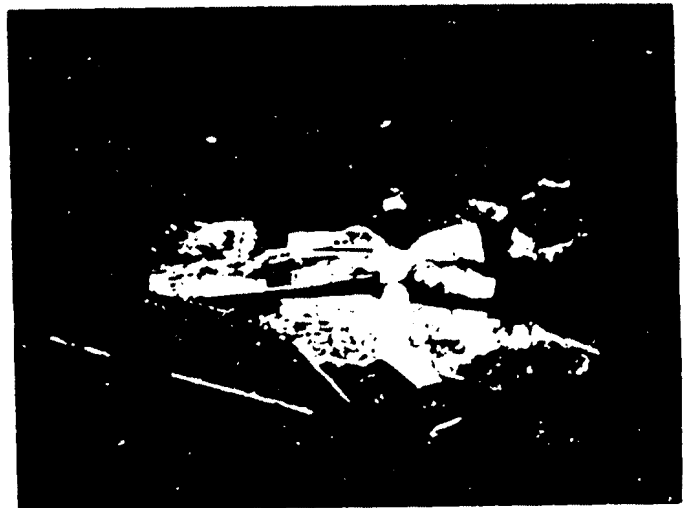
4/28/87
Ridgeview Subdivision Sewer Plant
Fence Repair Needed



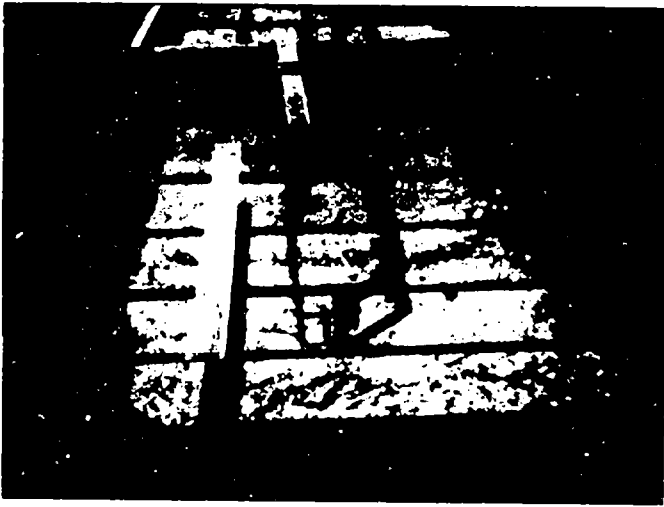
4/28/87
Ridgeview Subdivision Sewer Plant
Aeration Basin Showing Water
Surrounding the Sewer Plant



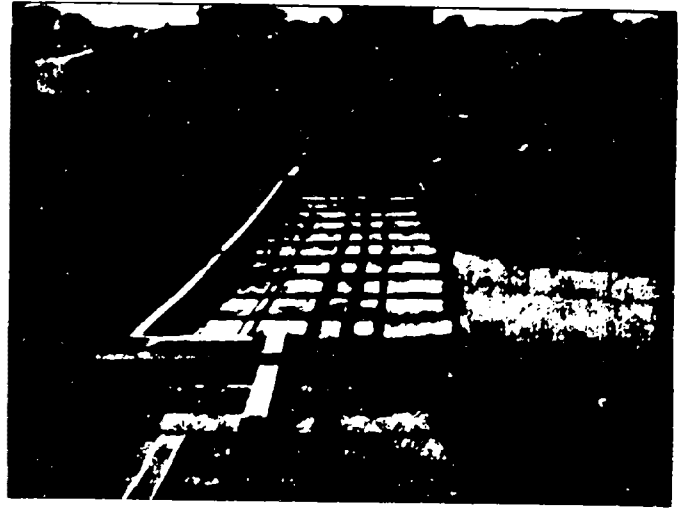
4/28/87
Ridgeview Subdivision Sewer Plant
Sewage Bypassing Treatment Plant



4/28/87
Ridgeview Subdivision Sewer Plant
Broken Sewer Line



4/28/87
Ridgeview Subdivision Sewer Plant
Clarifier



4/28/87
Ridgewood Subdivision Sewer Plant
Aeration Basin & Clarifier



4/28/87
Ridgeview Subdivision Sewer Plant
Lagoon



4/28/87
Ridgeview Subdivision Sewer Plant
Lagoon & Chlorine Contact Basin

4/28/87
Ridgeview Subdivision Sewer Plant
Aeration Basin & Lagoon

4/28/87
Ridgeview Subdivision Sewer Plant
Sewage Emptying into water around
Plant