

Natural Gas Distribution Service Areas

 Overlapping Gas Service Areas

 Municipal Gas Utilities

Local Distribution Companies

 Atmos Energy Corporation

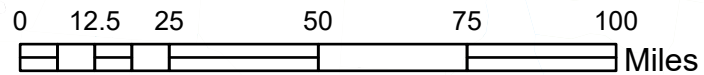
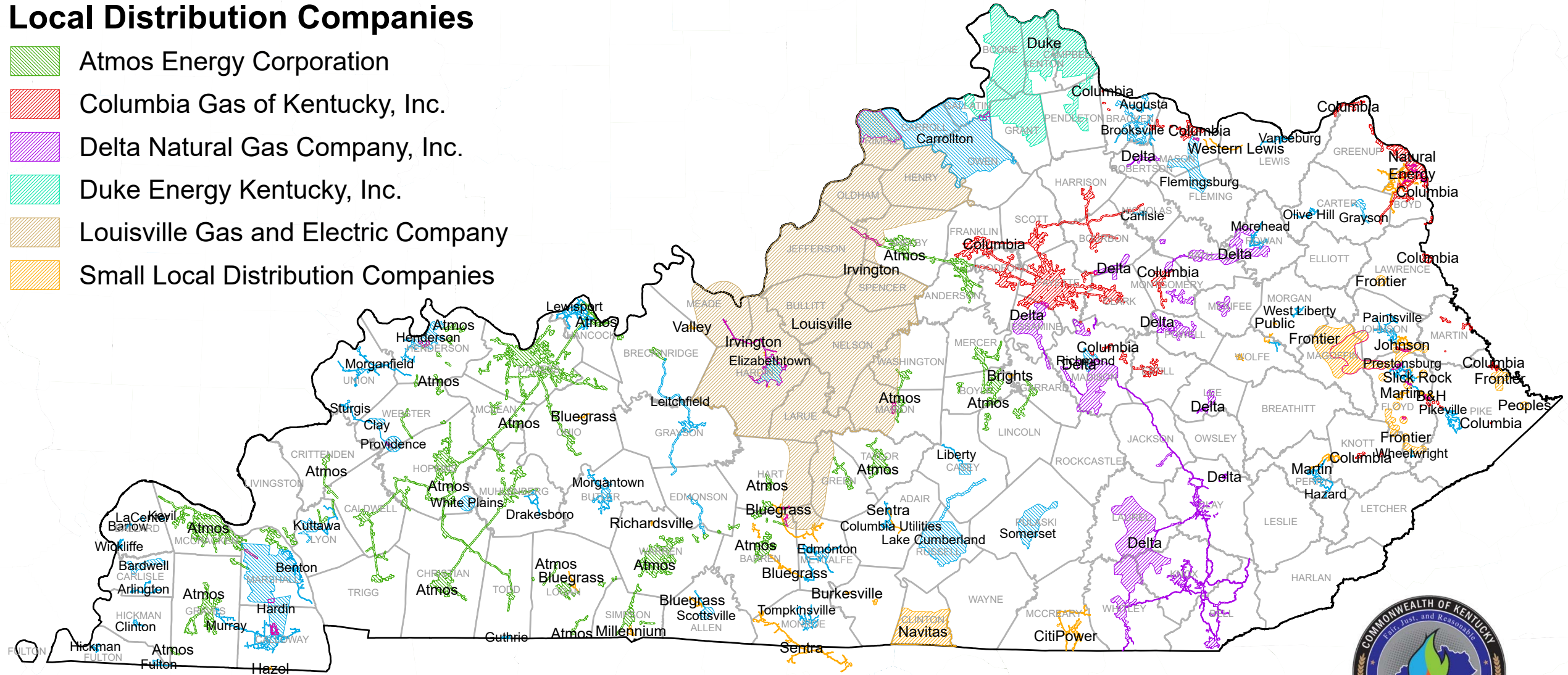
 Columbia Gas of Kentucky, Inc.

 Delta Natural Gas Company, Inc.

 Duke Energy Kentucky, Inc.

 Louisville Gas and Electric Company

 Small Local Distribution Companies



Data Source: Division of Geographic Information (DGI)

Gas distribution service areas do not have legal boundaries, or legally designated service territories. Service areas may overlap. Natural gas transmission utilities, gathering companies, and farm taps on gathering systems are excluded, and underground propane systems with more than 10 customers are included. The Public Service Commission regulates all natural gas distribution utilities for safety.



KY Public Service Commission
March 24, 2026