

RECEIVED

SHEEHAN, BARNETT, DEAN,  
PENNINGTON, LITTLE & DEXTER, P.S.C.

d/b/a THE DANVILLE LAW GROUP  
ATTORNEYS AT LAW  
111 SOUTH FOURTH STREET  
P.O. BOX 1517  
DANVILLE, KENTUCKY 40423-1517

MAR 06 2012

PUBLIC SERVICE  
COMMISSION

Telephone (859) 236-2641  
Fax Number (859) 236-0081

JAMES WILLIAM BARNETT  
JAMES HADDEN DEAN  
HENRY VINCENT PENNINGTON, III  
RAMONA CASTELLVI LITTLE  
STEPHEN ABELL DEXTER

OF COUNSEL  
ELIZABETH NICKELS LENN

RETIRED  
JAMES G. SHEEHAN, JR

March 5, 2012

Mr. Jeff Derouen  
Executive Director  
Public Service Commission  
211 Sower Boulevard  
Frankfort, KY 40602

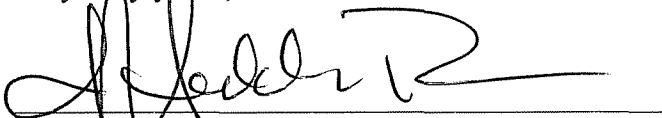
**RE: Public Contact Case No. 2011-00280**

Dear Mr. Derouen:

Pursuant to the order entered on November 7, 2011 and in keeping with compliance with that order, enclosed please find an original and one copy of the required documents, which also includes the quarterly training specific to the NESC and clearance issues.

If you have any questions, please contact me.

Very truly yours,


  
HON. J. HADDEN DEAN

JHD/ebs

Enclosures

CC: L. Allyson Honaker  
Jim Jacobus



A Touchstone Energy Cooperative 

**PSC Case No. 2011-00280**

**In The Matter Of  
Inter-County Energy Cooperative Corporation  
Alleged Failure to Comply With KRS 278.042**

**March 1, 2012**

P. O. Box 87 • Danville, KY 40423-0087 • (859) 236-4561

# INTER-COUNTY ENERGY COOPERATIVE

P. O. Box 87 • Danville, KY 40423-0087

## Case No. 2011-00280

### CONTENT

#### EXHIBIT 1

*Pursuant to the November 7, 2011 Order, Page 3, Paragraph 5, within 30 days of the Order, Inter-County shall provide documentation on the training given as a result of this incident, including the type of training, who attended, and how this training will be implemented into the training program on a regular basis. Inter-County shall continue to provide training specifically on the NESC and clearance issues at least once a quarterly basis.*

**(A) Building Clearances PowerPoint Presentation – February 20, 2012**

**(B) February 20, 2012 Safety Meeting Minutes and Attendance Roster**

#### EXHIBIT 2

*Pursuant to the November 7, 2011 Order, page 4, paragraph 6, within 30 days of the Order, Inter-County shall provide a summary report to the Commission of the system-wide inspection performed as a result of this incident. The report shall contain all potential violations found including this type of violation, the curative action taken and the timeframe in which they were corrected.*

**Inter-County Energy Potential Clearance Findings and Corrections**

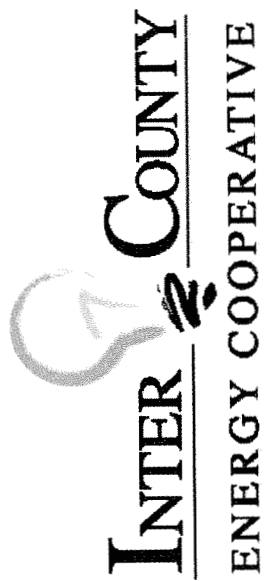
**March 1, 2012 Update**


#### EXHIBIT 3

*Pursuant to the November 7, 2011 Order, page 4, paragraph 8, beginning with the December 2011 issue, Inter-County shall provide information in each issue of its monthly magazine distributed to all customers regarding safety. At least once per year, Inter-County will provide specific information in the magazine on clearance issues. Inter-County shall file a copy of each monthly magazine with the Commission beginning with the December 2011 issue.*

**Kentucky Living – March 2012 – Page 28E**





A Touchstone Energy Cooperative 

# Building Clearances

2/20/2012

- Rule 234C : Clearances of wires, conductors, cables, and rigid live parts from buildings, signs, billboards, chimneys, radio and television antennas, tanks, flagpoles and flags, banners, and other installations except bridges.
- 2 conditions must be met:
  - With wind displacement
  - Without wind displacement

Conductor or cable	Horizontal clearance required when displaced by wind (ft)
Open supply conductor, 0 to 750 V*	3.5
230C2 cable, above 750V (Specialty cable – we do not have)	3.5
230C3 cable, above 750V (Duplex, Triplex, Quadruplex over 750V – we do not have)	3.5
Open supply conductors, over 750 V to 22 KV	4.5

\*Does not include neutral conductors  
Wind displacement is the distance the conductor will move horizontally when a 6lb/ft<sup>2</sup> wind at 60 degree Far or under worst design sag condition

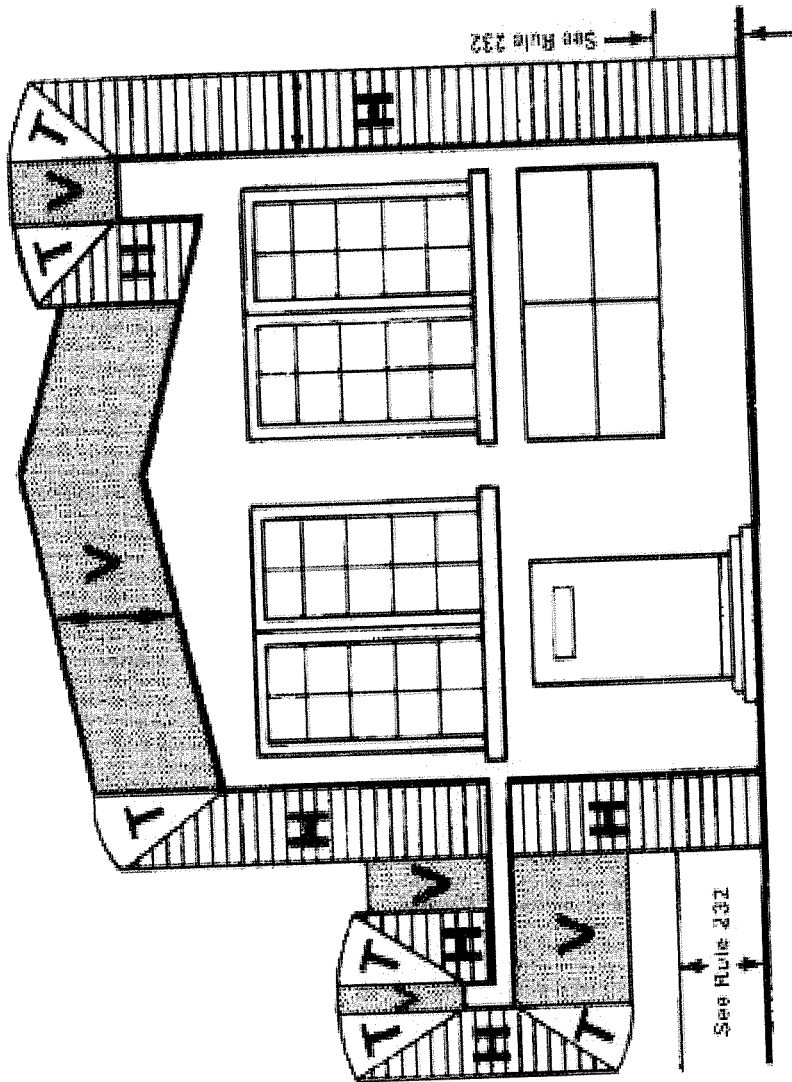
- Rule 234A1: Vertical and horizontal clearances (no wind displacement)
- The vertical and horizontal clearances apply under whichever conditions produces the closest distance.
  - 50 degree, no wind, final sag.
  - Maximum design temperature, no wind, final sag
  - 32 degree with  $\frac{1}{4}$ " of ice, no wind, final sag
  - Minimum design temperature, no wind, initial sag



Table 234-1 : Conductor clearances adjacent but not attached to buildings. Voltages are Ph to gnd. Clearances are with no wind.

Clearance of	Neutrals	Services	Primary
<b>1. Buildings</b>			
<b>a. Horizontal</b>			
(1) To walls, rojections, and guarded windows	4.5	5	7.5
(2) To unguarded windows	4.5	5	7.5
(3) To balconies and areas readily accessible to pedestrians	4.5	5	7.5
<b>b. Vertical</b>			
(1) Over or under roofs or projections not readily accessible to pedestrians	3	3.5	12.5
(2) Over or under balconies, porches, decks, and roofs readily accessible to pedestrians	10.5	11	13.5
(3) Over roofs, ramps, decks, and loading docks accessible to vehicles but not subject to truck traffic	10.5	11	13.5
(4) Over roofs, ramps decks, and loading docks accessible to truck traffic	15.5	16	18.5

H normally 7.5' Primary  
 4.5' Neutral  
 V normally 12.5' Primary  
 3' Neutral  
 Not readily accessible to  
 pedestrians is normal



**LEGEND**

Regions Where Conductors Are Prohibited	Controlling Clearance
H	Horizontal
V	Vertical
T	Transitional (Arc) Vertical (Arc)

**Figure 234-1(a)—Clearance diagram for building**

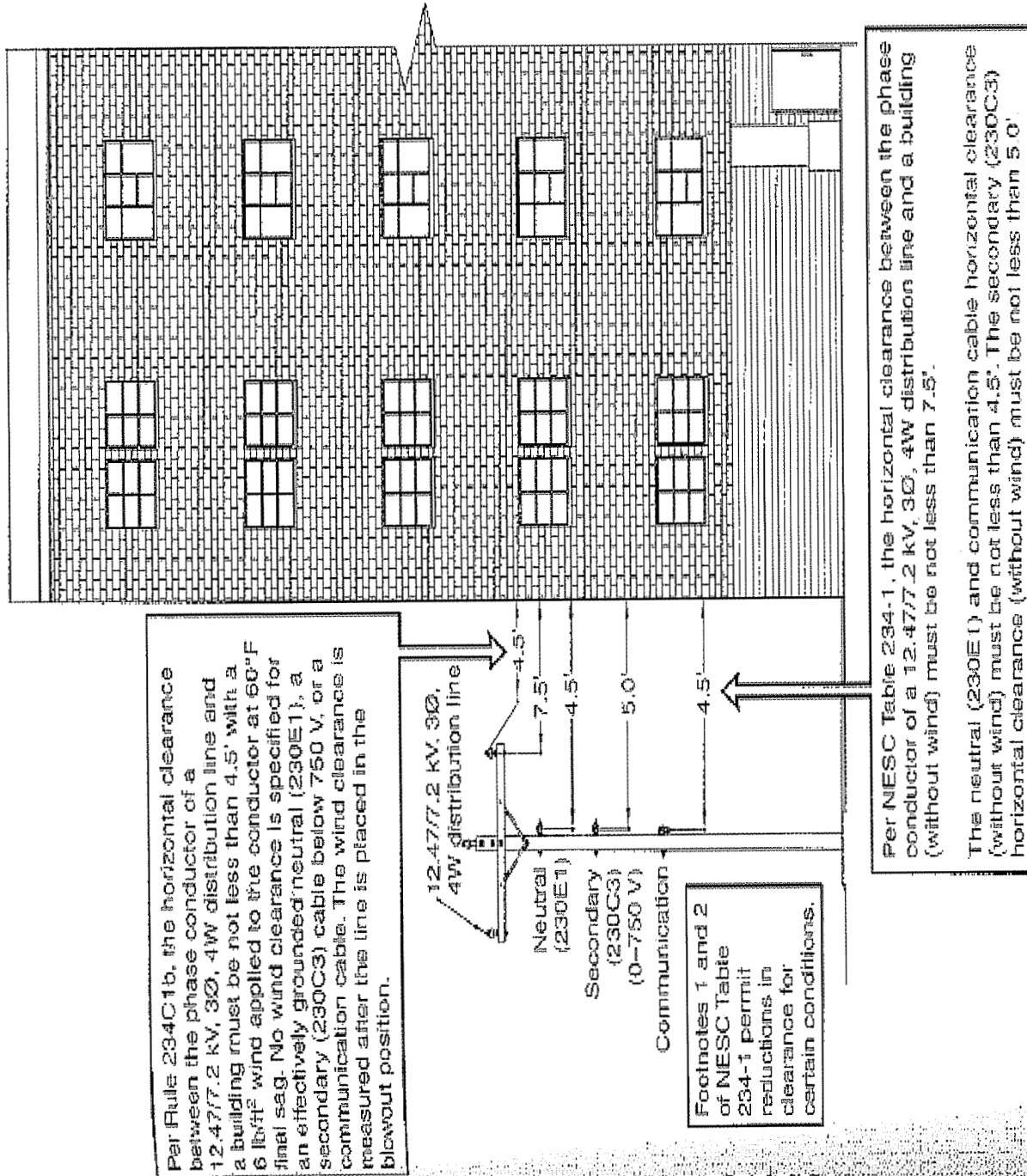
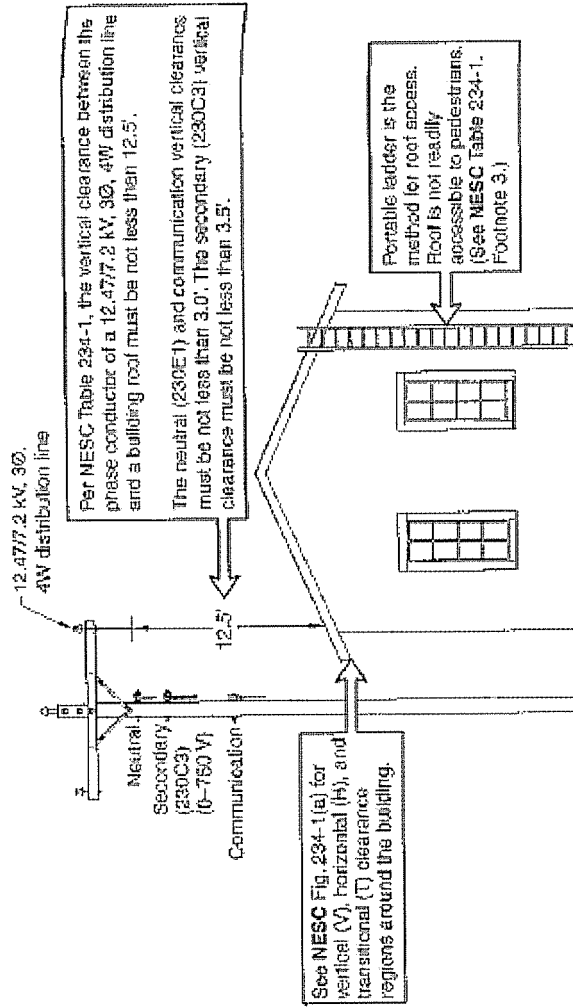


Fig. 234-8. Example of horizontal clearance of a conductor to a building (Rule 234C1).

**238 OVERHEAD LINES**

**Rule 234C**



**Fig. 234-9.** Example of vertical clearance of a conductor to a building (Rule 234C1).

Rule 234C

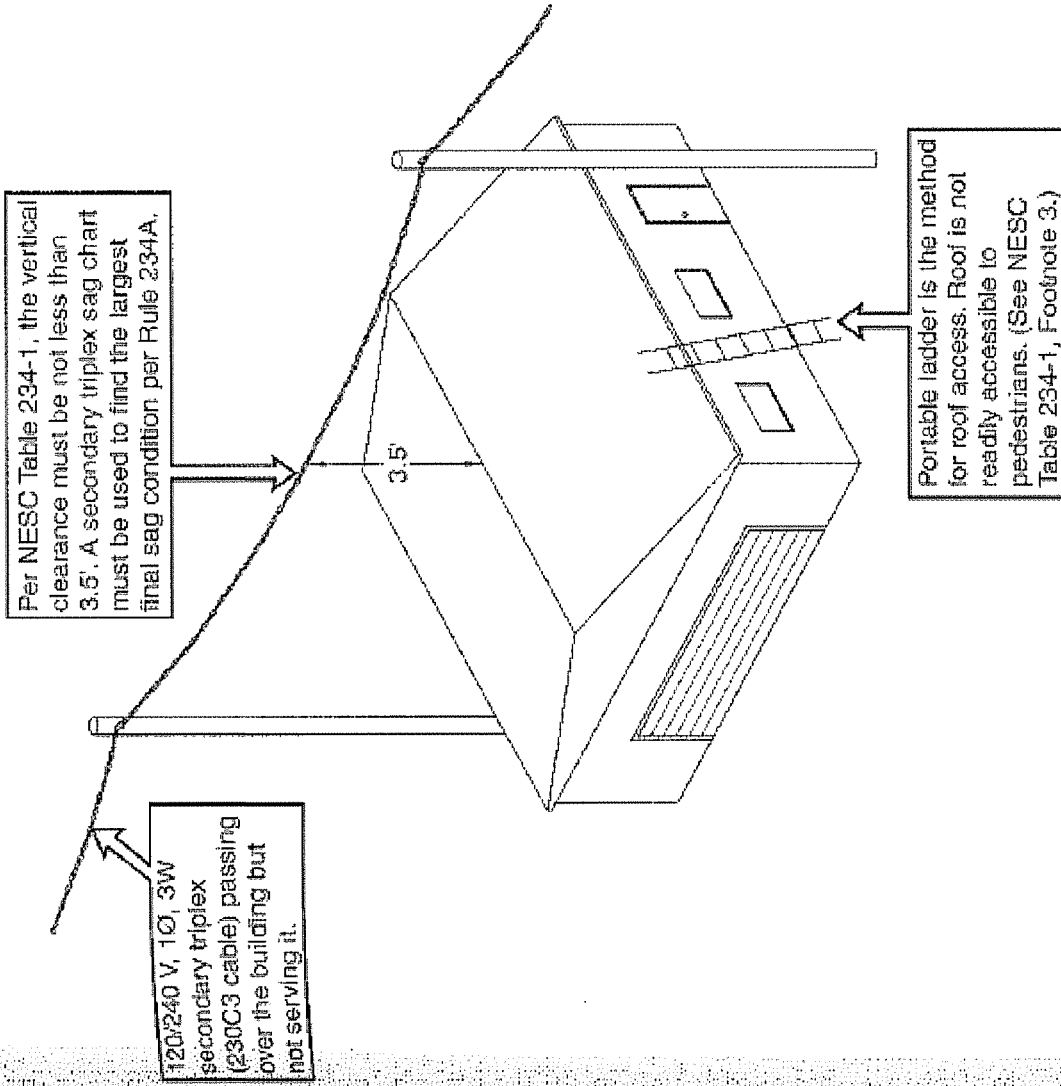
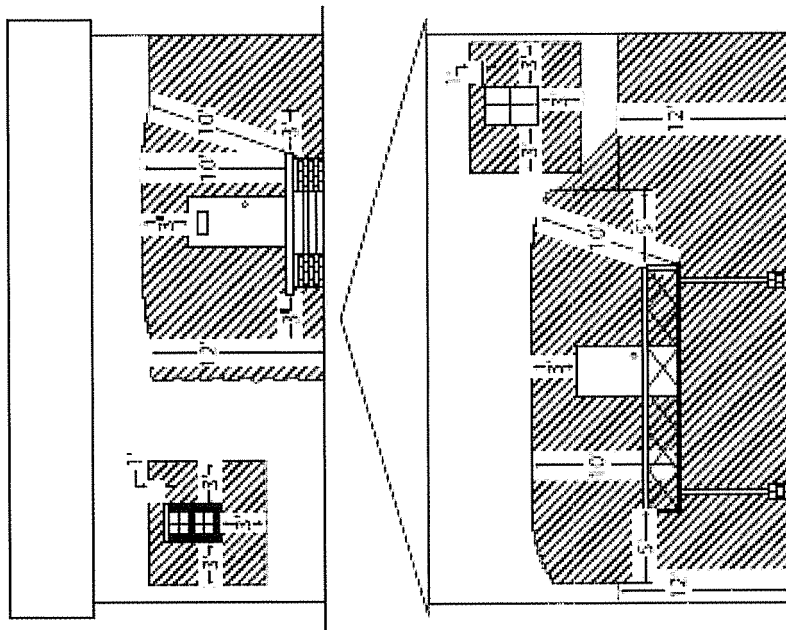


Fig. 234-10. Example of vertical clearance of a supply service drop conductor over a building but not serving it (Rule 234C1).

**MESC Ground Clearance Diagrams\***



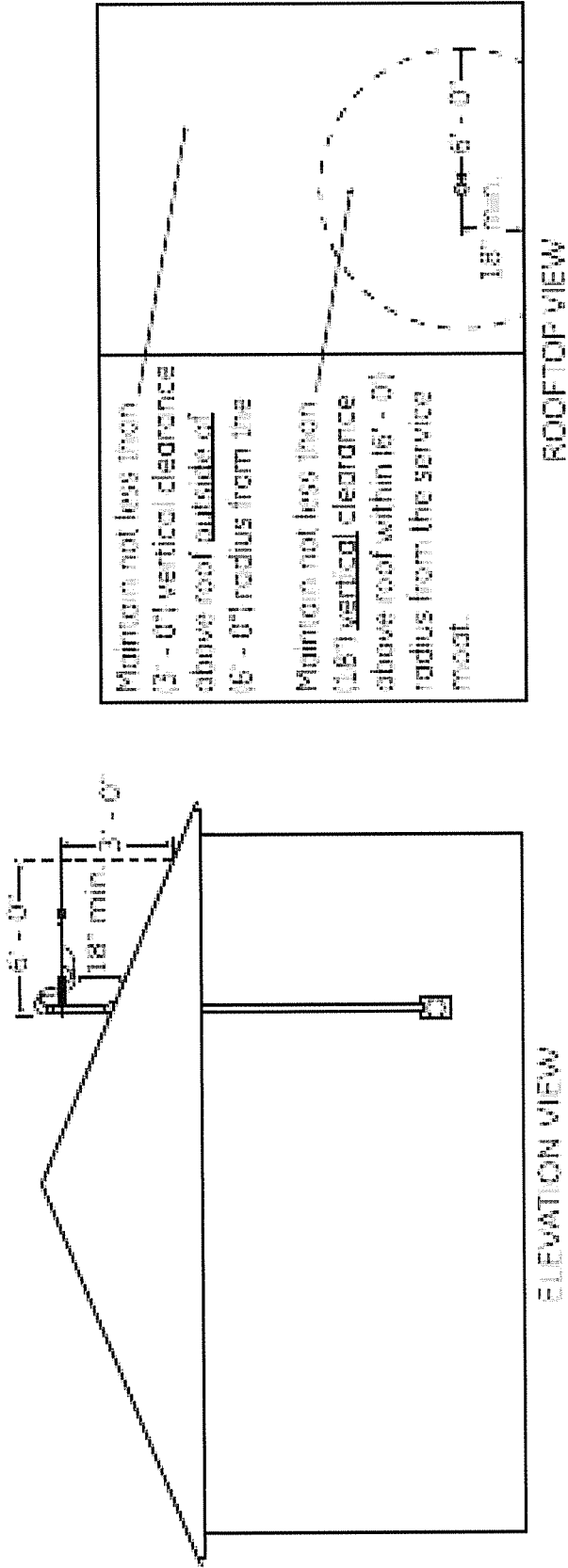
**Figure 14.1 Clearance for Service Drop Cable at Point of Attachment to Residential Home**

**Minimum Clearance Requirements for a Triplex Conductor Attachment to a Residential Home**

- Triplex conductors shall have a clearance of not less than 12' from the ground or 10' from any platform or porch from which they might be reached. (See Figure 14.1 for the minimum attachment height.)

**Note:** 16' is required over driveways (see NESC Table 232-1 for exception)

- Triplex conductors shall have a clearance of not less than 3' from windows, doors, porches, fire escapes, or similar locations.



**Exception #2:**

Eighteen inches of clearance is allowed if:

- The phase-to-phase voltage is less than 300 volts, and
- The conductors do not pass over more than 48 inches of roof overhang, and
- The conductors are terminated at a through-the-roof raceway or approved support, and
- The roof or balcony is not readily accessible.

Figure 14.2 Clearances of Service Drop Cable Termination on Supporting Cable

## MOST IMPORTANTLY

- Be on the lookout for clearance violations
- Report any violations, by service order, to the appropriate staking engineer.
- There are some exceptions that allow reduced clearances.



## Safety Meeting Minutes

February 20, 2012

Charlie Lewis called the meeting to order at 8:00 AM. John Land opened the meeting with prayer. Charlie began the meeting by discussing the following items:

- Grounds will be tested for the Lebanon office today. Make sure they are turned in to the warehouse and have your truck number clearly marked on them. Grounds were tested for the Danville office on Friday, February 17. There were two grounds that failed. These need to have the ends replaced and re-tested. Some trucks need more grounds on them. Each truck should have 4 grounds to use with the grounding bracket on three phase poles. Following the testing of grounds today, Joe will order ends so that more can be made.
- CPR classes that are scheduled for March 30<sup>th</sup> will begin at 10:00 AM. This class is only for new employees or those who missed last year's training.
- Following discussion by the Safety Committee, the dry erase board located next to the Foreman's office will be moved to the radio room. The reason for this is to make the information more available for Bob and Pat in the dispatch office. Please continue marking your location before you leave each day.
- We recently had a near miss involving Danny Masters. Danny was pulling out of a customer's drive onto Hwy 300 when the transformer he had tied onto the back of the truck fell into the roadway. Danny was able to move the transformer out of the road. Kenny Gribbins came by later and picked up the transformer with his digger truck and put some oil dry in the road. After discussing the near miss, Charlie stressed the need to make sure your loads are secure each time you move your vehicle, this includes both the rigging used to tie the secure the load and the attachment point.
- There are new monthly vehicle inspection sheets for non-commercial vehicles. These should be filled out on the first Monday of each month and turned in to Davonne.
- Showed some theft pictures taken of a customer's meter base. The customer had been prying open the meter base to leave our seal intact and inserting blades from butter knives into the lugs. Charlie stressed the need to carefully inspect each theft situation and look carefully. To reinforce this idea, an article was shared from a cooperative in South Carolina that showed customers splicing into underground services before the meter base to steal electricity for marijuana growing operations.

# SAFETY MEETING ROSTER

Date: February 20, 2012

**PRESENTER** 1) Clarence Greene – KAEC  
2) Charlie Lewis & David Phelps

---

**SUBJECT** 1) Forklift Training and Forklift Driving Skills  
2) Line Clearance Training, Emergency Response Plan,  
And Earthquake and Tornado Preparedness

---

Name/Title

Signature

Administrative Department

Jim Jacobus, President/CEO

*Jim Jacobus*

Charlie Lewis, Safety/Loss Control Coordinator

*Charlie Lewis*

Cynthia Luttrell, Executive Assistant

*Cynthia Luttrell*

Melvin Johnson, Facilities Maint. Coordinator

*Melvin Johnson*

Customer Service Department

Sheree Gilliam, Vice President

*Sheree Gilliam*

Chris Bach, Computer System Administrator

*Chris R. Bach*

Teresa Campbell, Customer Accounts Rep

*Teresa Campbell*

Farrah Coleman, Comm/Customer Info Spec

*Child Sick -*

Mary Dotson, Customer Accounts Rep

*Mary Dotson*

Linda Emmons, Customer Accounts Rep

Dan Hitchcock, Manager Customer Service

*Dan Hitchcock*

Hank Smith, Customer Service Advisor

*Hank Smith*

Lori Stocker, Manager Customer Accounts

*Lori Stocker*

Lena Tate, Customer Accounts Rep

*Lena Tate*

Jennifer Turner, Customer Accounts Rep

*Jennifer Turner*

April Whitis, Customer Service Advisor

*April Whitis*

Heather Wilson, Customer Accounts Rep

Melanie Wilson, Customer Accounts Rep

*Melanie Wilson*

Bruce King, 1<sup>st</sup> Class Line Technician

*Bruce King*

John Land, 1<sup>st</sup> Class Line Technician

*John Land*

Ricky Lane, 1<sup>st</sup> Class Line Technician

*Ricky Lane*

Kent Loomer, Crew Leader

*Kent Loomer*

Marty Luttrell, 1<sup>st</sup> Class Line Technician

*Marty Luttrell*

Danny Lynn, 2<sup>nd</sup> Class Line Technician

*Danny Lynn*

Danny Masters, Maintenance Technician

*Danny Masters*

Joe Mattingly, Coordinator Purchasing/Wrhse

*Joe Mattingly*

Tevin McElroy, Engineering Technician

*Tevin McElroy*

Bo McGuffey, Maintenance Technician

*Bo McGuffey*

Curtis Moss, 5<sup>th</sup> Class Line Technician

*Curtis Moss*

David Phelps, Vice President

*David Phelps*

Brian Ping, 1<sup>st</sup> Class Line Technician

*Brian Ping*

Ron Quinn, Plant Accountant

*Ron Quinn*

Danny Renner, Crew Leader

*Danny Renner*

DeWayne Siler, Mapping Technician

*DeWayne Siler*

Mark Taylor, 1<sup>st</sup> Class Line Technician

*Mark Taylor*

David Turner, Maintenance Technician

*David Turner*

Iran Walker, 1<sup>st</sup> Class Line Technician

*Iran Walker*

Bruce Warren, Maintenance Technician

*Bruce Warren*

Clayton Watts, Maintenance Superintendent

*Clayton Watts*

Larry Wheatley, Maintenance Technician

*Larry Wheatley*

Chuck York, Construction Superintendent

*Chuck York*

**Lebanon District Office**

Mary Lou Mayes, District Manager

*Mary Lou Mayes*

Sharon Bach, Office Coordinator

*Sharon Bach*



# Inter-County Energy - Clearance Findings and Corrections

3/1/2012

WO #	STAKED DATE	MEMBER NAME	CLEARANCE ISSUE	DESCRIPTION	COUNTY	COMPLETION
110383	5/2/2011	James Coffey	Neutral 8' over grain bin	Changed OH to UG primary	Lincoln	5/27/2011
110505	5/24/2011	James Beeler	Primary 10' from grain bin	Install 50' Pole and shorten Primary Tap	Casey	6/2/2011
110475	5/13/2011	Lyndal Mattingly	Phase 2' inside clearance window	Move Phase to new cross arm	Nelson	6/13/2011
110499	5/23/2011	Floyd Rowe	Neutral 3' over grain bin	Rerouted 500' Primary away from Grain bins	Lincoln	6/24/2011
110500	5/23/2011	Old Railroad Bed Rd	Primary line 10' inside vertical window at 28' away	Install 55' Pole and shorten Primary Tap	Garrard	6/24/2011
110476	5/13/2011	William Peterson	Primary line over fuel storage tanks	Relocated 307' of primary	Marion	7/12/2011
110372	4/27/2011	Kay Hale	Line over swimming pool / Pool removed after line move	Relocated 118' of primary line	Lincoln	7/21/2011
110657	7/7/2011	Thomas Martin Mattingly	Overhead service too close/changed to underground	Replaced OH service with UG service	Marion	8/1/2011
110474	5/13/2011	Cloyd Brady	Line at 15' of grain bin	Install new pole and relocate primary	Marion	9/28/2011
110611	6/22/2011	Bill & Susan Mattingly	Line at 8' of grain bin	Relocate 312' of OH primary	Marion	9/28/2011
110655	7/7/2011	Joseph Buckman	Primary line close to grain bins	Change out pole and move away from Grain bin	Marion	9/28/2011
110349	4/19/2011	George Burdine	Primary 12' over barn	Change Pole and add pole in line	Lincoln	5/4/2011
110889	9/6/2011	Peterson Grain Bin	Removed OH prim Installed URD prim for clearance	URD Primary to Padmount Xfmer for grain bins	Marion	9/19/2011
110968	9/29/2011	Danny Gentry	Primary line close to grain bins	add pole and reroute line away from grain bin	Laurie	10/4/2011
110655	7/7/2011	Joseph Buckman	Primary line close to grain bins	Change out pole and move away from Grain bin	Marion	9/27/2011
110977	9/30/2011	Katherine Peake	Primary line close to grain bins	Reroute primary line away from grain bins	Marion	10/5/2011
110349	4/19/2011	George Burdine	Clearance issue	Relocate primary close to grain bin	Lincoln	5/2/2011
111068	10/25/2011	Timothy Miller	Rd clearance issue	Add pole in line for rd Clearance	Lincoln	11/2/2011
111037	10/18/2011	John Thompson	Clearance issue at grain bin	Move primary line away from grain bin	Marion	11/8/2011
111069	10/25/2011	W C Brogle	Clearance issue at grain bin	Move primary line away from grain bin	Lincoln	11/8/2011
110986	10/4/2011	Thompson Drive	Clearance issue over road	Change out poles for Clearance	Marion	11/3/2011
111037	10/18/2011	Hourigan Lane	Clearance issue at grain bin	Changed 1-35' & 1-40' pole to 2-60' poles	Marion	11/8/2011
111069	10/25/2011	Norris Rd	Clearance issue at grain bin	Relocated 393' of primary	Lincoln	11/9/2011
111072	10/26/2011	Makers Mark	Clearance from wall on a recently built addition	Reroute 3 phase from building for Clearance	Marion	1/4/2012
111306	1/3/2012	Norman Robbins	Low Service	Rerouted service	Marion	1/5/2012
111307	1/3/2012	Marcus Clark	Low Service	Rerouted service	Marion	1/3/2012
110987	10/4/2011	David Sandusky	Clearance issue at junk yard	Changed out 2 poles for clearance	Marion	11/10/2011
111113	11/7/2011	Airport Rd	Clearance issue at grain bin	Changed out two poles for Clearance	Boyle	11/10/2011
111147	11/14/2011	Dewey Coffey	Clearance issue at grain bin	Changed out two poles for Clearance	Casey	11/30/2011
111149	11/14/2011	Dewey Coffey	Clearance issue at grain bin	Changed out 2 poles for clearance	Casey	12/5/2011
111162	11/11/2011	J W Brogle	Clearance issue at grain bin	Move primary line and change svc to urd	Garrard	12/12/2011
111268	12/14/2011	Farris Rd	Clearance issue	Retire 3 phase and relocate single phase	Marion	12/16/2011
111307	1/3/2012	Marcus Clark	Clearance issue	Change pole for Clearance on svc wire	Marion	1/3/2012
111259	12/13/2011	Terry Cecil	Clearance issue	Add pole in line and reroute svc for clearance	Nelson	1/3/2012
111223	12/7/2011	Sugar Creek Rd	Grain Bin Clearance	Change out 2 poles for Clearance at grain bin	Garrard	1/4/2012
111306	1/3/2012	Jimmy Devine Rd.	Low svc	Add 30-6 pole in line for Clearance	Marion	1/5/2012
120019	1/6/2012	Alfred ODaniel	Driveway Clearance	Added 40-4 pole in line for Clearance	Marion	1/19/2012
120122	2/3/2012	David J Mattingly	Clearance issue over building	Rerouted wire from over top of building	Marion	2/17/2012



INTER-COUNTY ENERGY COOPERATIVE'S

# Kentucky Living

CELEBRATING THE ENERGY  
OF YOUR COMMUNITY

## MULCH MADNESS

New ways to make compost  
—the original organic fertilizer

### DINER DISCOVERIES

Where to find those great  
little restaurants

### NO MOW

Leave the lawn alone,  
for wildlife's sake

### CAN'T

Saving time, money, and flavor  
with the art of preserving food

EXHIBIT 3

Reference Page 28E