

COMMONWEALTH OF KENTUCKY  
BEFORE THE PUBLIC SERVICE COMMISSION

In the Matter of:

MEADE COUNTY RURAL ELECTRIC	)	
COOPERATIVE CORPORATION	)	
_____	)	CASE NO.
	)	2010-00375
ALLEGED FAILURE TO COMPLY WITH	)	
KRS 278.042	)	

O R D E R

Meade County Rural Electric Cooperative Corporation ("Meade County"), a Kentucky cooperative corporation which engages in the distribution of electricity to the public for compensation for lights, heat, power, and other uses, and which was formed pursuant to KRS 279.010 to 279.220, is a utility subject to Commission jurisdiction.<sup>1</sup>

KRS 278.042 requires the Commission to ensure that each electric utility constructs and maintains its plant and facilities in accordance with accepted engineering practices as set forth in the Commission's administrative regulations and Orders and in the most recent edition of the National Electrical Safety Code ("NESC").

KRS 278.030 requires every utility to furnish adequate, efficient and reasonable service. KRS 278.260 permits the Commission, upon its own motion, to investigate any act or practice of a utility that affects or is related to the service of a utility. KRS 278.280(1) further permits the Commission, after conducting such investigation and finding that a practice is unreasonable, unsafe, improper, or inadequate, to determine

---

<sup>1</sup> KRS 278.010(3)(a); KRS 279.210.

the reasonable, safe, proper, or adequate practice or methods to be observed and to correct unreasonable, unsafe, improper or inadequate practices by Order.

Commission Staff submitted an Electric Utility Personal Injury Incident Report ("Report") to the Commission dated September 3, 2009 and attached as an Appendix to this Order. The Report alleges that, on August 12, 2009 at 315 South Highway 259, Harned, in Breckinridge County, Kentucky, Patrick Haste, an employee of Bowlin Energy Services ("BES"), sustained severe burn injuries as a result of an incident at the site of a Meade County electric construction project.

According to the Report, at the time of the August 12, 2009 incident, BES was working under contract with Meade County, installing new conductors on an existing three-phase circuit on Meade County's system. The first-level supervisor or person in charge at the construction site on the day of the incident was BES employee Ronald Douglas.

Before pulling up the new conductor to install it on Meade County's system, the BES crew failed to effectively ground the new conductor. In the process of pulling it up for installation, the new conductor made contact with an existing, energized conductor on Meade County's system. Because of the BES crew's failure to effectively ground the new conductor, it became energized to approximately 7,200 volts.

The new conductor was attached to a tensioner (also called a "brake")—a piece of construction equipment made of steel and other materials. The purpose of a tensioner is to keep the new conductor under control and to prevent it from making contact with any energized equipment during the installation. This tensioner was mounted onto the bed of a utility truck that was constructed of steel and wood. Neither

the tensioner nor the utility truck was effectively grounded by the BES crew prior to the incident. As a result of the failure to effectively ground the tensioner or the utility truck, when the new conductor became energized, it energized both the tensioner and the bed of the utility truck.

While attempting to adjust the tension on the new conductor, Mr. Haste touched the energized truck bed and received very serious shock and burn injuries to his right hand, right arm, and right side. Mr. Haste received emergency medical treatment at the scene of the incident and was later transported to the University of Louisville Hospital, where his right arm was amputated above the elbow. He also received skin grafts for the burns to his right arm and side.

Pursuant to 807 KAR 5:006, Section 26(2), Meade County provided a summary written report ("summary report") regarding the August 12, 2009 incident to Commission Staff on August 18, 2009, which is appended to Commission Staff's Report as Attachment A. According to the summary report, Mr. Haste was wearing fire-retardant clothing at the time of the incident. However, according to the Report, he was not wearing other personal protective equipment such as rubber gloves or rubber sleeves that could have insulated him from the electric charge.

Based on Commission Staff's investigation of the accident and the information provided by Meade County in its summary report, Commission Staff alleges that Meade County has violated KRS 278.042 by violating the following provisions of the most recent edition (2007) of the NESC:

**NESC Section 42: General Rules for Employees:**

- Violation 1. 420. Personal General Precautions  
C. Safeguarding Oneself and Others

Employees who work on or in the vicinity of energized lines shall consider all of the effects of their actions, taking into account their own safety as well as the safety of other employees on the job site, or on some other part of the affected electric system, the property of others, and the public in general.

Violation 2: 420. Personal General Precautions  
D. Energized or Unknown Conditions

Employees shall consider electric supply equipment and lines to be energized, unless they are positively known to be de-energized. Before starting work, employees shall perform preliminary inspections or tests to determine existing conditions. Operating voltages of equipment and lines should be known before working on or in the vicinity of energized parts.

Violation 3: 420. Personal General Precautions  
H. Tools and Protective Equipment

Employees shall use the personal protective equipment, the protective devices, and the special tools provided for their work. Before starting work, these devices and tools shall be carefully inspected to make sure that they are in good condition.

Violation 4: 421. General Operating Routines  
A. Duties of a First-Level Supervisor or Person in Charge

This individual shall:

1. Adopt such precautions as are within the individual's authority to prevent accidents.
2. See that the safety rules and operating procedures are observed by the employees under the direction of this individual.

Violation 5: 422. Overhead Line Operation Procedures  
C. Installing and Removing Wires or Cables

1. Precautions shall be taken to prevent wires or cables that are being installed or removed from contacting energized wires or equipment. Wires or cables that are not bonded to an effective ground and which are being installed or removed in the vicinity of energized conductors shall be considered as being energized.

## NESC Section 44. Additional Rules for supply employees

### Violation 6: 441. Energized Conductors or Parts

NESC Section 44, 441-A-1: Employees shall not approach or bring any conductive object within the minimum approach distance listed in Table 441-1<sup>2</sup> or Table 441-4 to exposed parts unless one of the following is met:

- a. The line or part is de-energized and grounded per Rule 444D;
- b. The employee is insulated from the energized line or part. Electrical protective equipment insulated for the voltage involved, such as tools, gloves, rubber gloves, or rubber gloves with sleeves, shall be considered effective insulation for the employee from the energized part being worked on; or
- c. The energized line or part is insulated from the employee and from any other line or part at a different voltage.

### Violation 7: 443. Work on Energized Lines and Equipment

#### A. General Requirements

6. Equipment or material of a non insulating substance that is not bonded to an effective ground and which extends into an energized area, and which could approach energized equipment closer than the distance specified in Rule 441A, shall be treated as though it is energized at the same voltage as the line or equipment to which it is exposed.

Based on its review of the Report and being otherwise sufficiently advised, the Commission finds that prima facie evidence exists that Meade County has failed to comply with KRS 278.042. We further find that a formal investigation into the incident that is the subject matter of the Report should be conducted and that this investigation should also examine the adequacy, safety, and reasonableness of Meade County's practices related to the construction, installation, and repair of electric facilities as they relate to the facts of this case.

---

<sup>2</sup> See Report at 6.

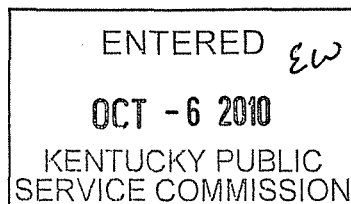
The Commission, on its own motion, HEREBY ORDERS that:

1. Meade County shall submit a written response to the allegations contained in the Report to the Commission within 20 days of the date of this Order.
2. Meade County shall appear on December 2, 2010 at 10:00 a.m., Eastern Standard Time, in Hearing Room 1 of the Commission's offices at 211 Sower Boulevard in Frankfort, Kentucky, for the purpose of presenting evidence concerning the alleged violations of KRS 278.042 and of showing cause why it should not be subject to the penalties prescribed in KRS 278.990(1) for these alleged violations.
3. At the scheduled hearing in this matter, Meade County shall also present evidence on the adequacy, safety, and reasonableness of its practices related to the construction, installation, and repair of electric facilities as they relate to the facts of this case and whether such practices require revision.
4. The December 2, 2010 hearing shall be recorded by videotape only.
5. The Report in the Appendix is made a part of the record in this case.
6. Any requests for an informal conference with Commission Staff shall be set forth in writing and filed with the Commission within 20 days of the date of this Order.

By the Commission

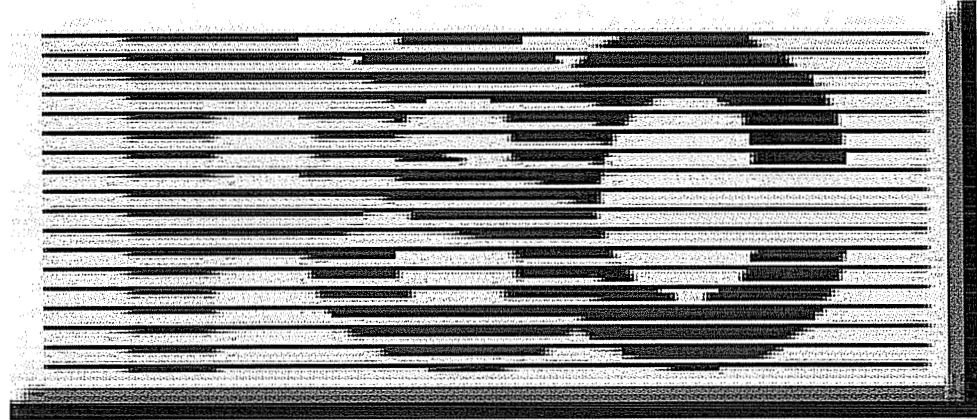
ATTEST:

  
Executive Director



APPENDIX

APPENDIX TO AN ORDER OF THE KENTUCKY PUBLIC SERVICE  
COMMISSION IN CASE NO. 2010-00375 DATED **OCT - 6 2010**



# INCIDENT INVESTIGATION ~ Staff Report

Report Date ~ September 4, 2009

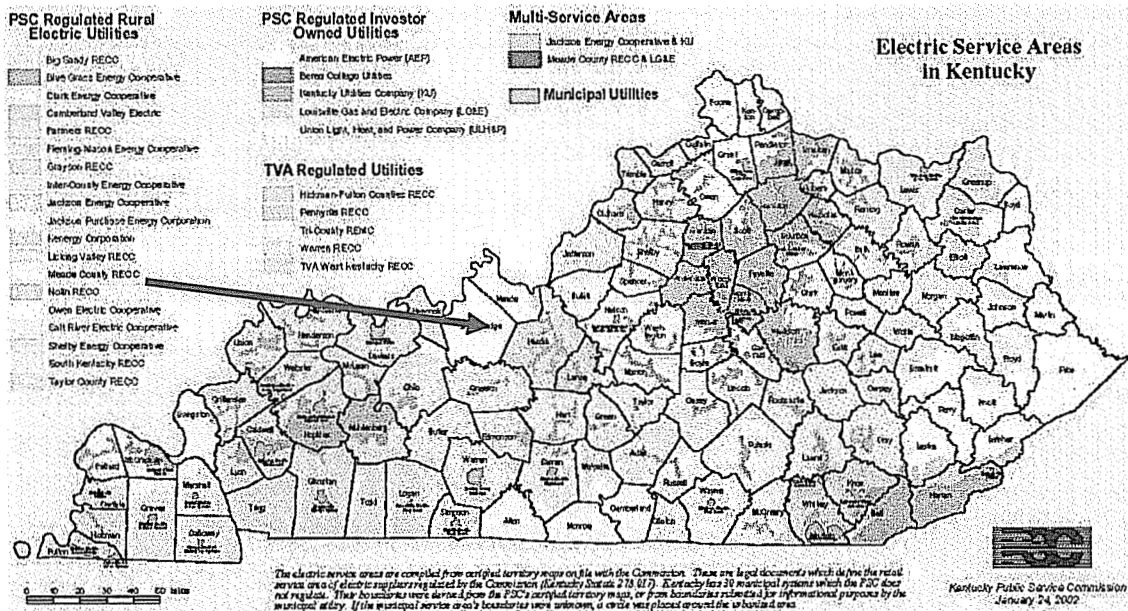
Incident Date ~ August 12, 2009

Serving Utility ~ Meade County RECC

Incident Location ~ Harned, Kentucky

Victim ~ Patrick Haste

PSC Investigator ~ Steve Kingsolver







# Kentucky Public Service Commission

Electric Utility Personal Injury Incident Report

**Utility:**

Meade County RECC

**Reported By:**

David Poe, VP of Engineering

**Incident Occurred:**

August 12, 2009      Approximately 4:30PM

**Utility Notified:**

August 12, 2009      Approximately 5:04PM

**PSC Notified:**

August 12, 2009      Approximately 5:25PM

**PSC Investigated:**

August 13, 2009      Approximately 9:00AM

**Report Received:**

August 19, 2009

**Incident Location:**

315 South Hwy 259  
Harned, KY  
Breckinridge County

**Incident Description:**

Bowlin Energy Services is an electrical line contractor working for Meade County RECC. A Bowlin Energy Services crew was installing new conductors on an existing three phase circuit for Meade County RECC when the new de-energized and not grounded 3/0 ACSR made contact with an existing energized conductor of this circuit. During the process of pulling this new conductor and before the new conductor was accidentally energized, it was noticed that the tension on the conductor needed to be increased. An employee of Bowlin Energy, Patrick Haste, was instructed to go to the wire truck and increase the tension on the conductor being pulled in. Tension is applied to the new conductor being pulled in by what is called a tensioner or brake. This keeps the new conductor under control, and is less likely to become energized, and is less of a safety hazard during the process of pulling in the new conductor. When the victim, Patrick Haste, reached into the bed of the truck to increase the tension on the new conductor, the new conductor had already become energized to approximately 7200 volts and in turn, energized the tensioner or brake. The victim, Patrick Haste, received serious burns to his right hand, right arm and right side.

**Victim:**

**Name:** Patrick Haste Lineman, A Bowlin Energy

**Address:** 122 Railroad Street, Hustonville, KY 40437

**Employer:** Bowlin Energy

**Injuries:** Burns to right hand, right arm and right side.

**Fatality:** No

**Shock and Burn:** Yes

**Age:** 30 years old.

<b><u>Witnesses:</u></b>	<b><u>Name:</u></b>	<b><u>Address:</u></b>	<b><u>Employer:</u></b>
1.)	Ronald Douglas	Gravel Switch, KY	Bowlin Energy
2.)	Bobby Gooch	Waynesburg, KY	Bowlin Energy
3.)	Jerry Conder	Gravel switch, KY	Bowlin Energy
4.)	Kyle Smither	Sanders, KY	Bowlin Energy
5.)	Dallas York	Sanders, KY	Bowlin Energy
6.)	Mike Tucker	Monticello, KY	Bowlin Energy
7.)	Willie Sheppard	Unknown	Bowlin Energy
8.)	Tyler Hale	Unknown	Bowlin Energy
9.)	Brandon Hale	Unknown	Bowlin Energy

<b>Information From:</b>	<b>Name:</b>	<b>Position:</b>	<b>Employer:</b>
	1.) David Poe	VP of Engineering	Meade Co. RECC
	2.) Greg Morgan	Member System Safety	Big Rivers Electric
	3.) Ronald Douglas	Lineman/Foreman	Bowlin Energy
	4.) Bobby Gooch	Lineman, A	Bowlin Energy
	5.) Jerry Conder	Groundman	Bowlin Energy
	6.) Kyle Smither	Groundman	Bowlin Energy
	7.) Dallas York	Lineman, A	Bowlin Energy
	8.) Mike Tucker	Lineman, A	Bowlin Energy

**Probable Violations:**

**KAR 278.042      Service adequacy and safety standards for electric utilities-  
National Electric Safety Code**

**Section 42. General rules for Employees**

**#1**

**420. Personal General Precautions**

**C.      Safeguarding Oneself and Others**

Employees who work on or in the vicinity of energized lines shall consider all of the effects of their actions, taking into account their own safety as well as the safety of other employees on the job site, or on some other part of the affected electric system, the property of others, and the public in general.

**#2**

**420. Personal General Precautions**

**D.      Energized or Unknown Conditions**

Employees shall consider electric supply equipment and lines to be energized, unless they are positively known to be de-energized. Before starting work, employees shall perform preliminary inspections or tests to determine existing conditions. Operating voltages of equipment and lines should be known before working on or in the vicinity of energized parts.

**#3**

**420. Personal General Precautions**

**H.      Tools and Protective Equipment**

Employees shall use the personal protective equipment, the protective devices, and the special tools provided for their work. Before starting work, these devices and tools shall be carefully inspected to make sure that they are in good condition.

**#4**

**421. General Operating Routines**

A. Duties of a First-Level Supervisor or Person in Charge

This individual shall:

1. Adopt such precautions as are within the individual's authority to prevent accidents.
2. See that the safety rules and operating procedures are observed by the employees under the direction of this individual.

**#5**

**422. Overhead Line Operation Procedures**

C. Installing and Removing Wires or Cables

1. Precautions shall be taken to prevent wires or cables that are being installed or removed from contacting energized wires or equipment. Wires or cables that are not bonded to an effective ground and which are being installed or removed in the vicinity of energized conductors shall be considered as being energized.

**Section 44. Additional Rules for supply employees**

**#6**

**441. Energized Conductors or Parts**

Employees shall not approach, or knowingly permit others to approach, any exposed ungrounded part normally energized except as permitted by this rule.

A. Minimum Approach Distance to Live Parts.

1. General.

Employees shall not approach or bring any conductive object within the minimum approach distance listed in Table 441-1 or Table 441-4 to exposed parts unless one of the following is met:

- a. The line or part is de-energized and grounded per Rule 444D.
- b. The employee is insulated from the energized line or part. Electrical protective equipment insulated for the voltage involved, such as tools, gloves, rubber gloves, or rubber gloves with sleeves, shall be considered effective insulation for the employee from the energized part being worked on.
- c. The energized line or part is insulated from the employee and from any other line or part at a different voltage.

**Table 441-1: AC Live Work Minimum Approach Distance<sup>4</sup>**  
 (See Rule 441 in its entirety.)

Voltage in kilovolts phase to phase <sup>1,2</sup>	Distance to employee			
	Phase-to-ground		Phase-to-phase	
	(m)	(ft-in)	(m)	(ft-in)
0 to 0.050 <sup>1</sup>	not specified		not specified	
0.051 to 0.300 <sup>1</sup>	avoid contact		avoid contact	
0.301 to 0.750 <sup>1</sup>	0.31	1-0	0.31	1-0
0.751 to 15	0.65	2-2	0.67	2-3
15.1 to 36.0	0.77	2-7	0.86	2-10
36.1 to 46.0	0.84	2-9	0.96	3-2
46.1 to 72.5	1.00 <sup>3</sup>	3-3 <sup>3</sup>	1.20	3-11

1 For single-phase systems, use the highest voltage available.

2 For single-phase lines off three phase systems, use the phase-to-phase voltage of the system.

3 The 46.1 to 72.5 kV phase-to-ground 3-3 distance contains a 1-3 electrical component and a 2-0 inadvertent movement component.

4 Distances listed are for standard atmospheric conditions. The data used to formulate this table was obtained from test data taken with standard atmospheric conditions. Standard atmospheric conditions are defined as temperatures above freezing, wind less than 15 mi per hr or 24 km per hr, unsaturated air, normal barometer, uncontaminated air, and clean and dry insulators. If standard atmospheric conditions do not exist, extra care must be taken.

**#7**

**443. Work on Energized Lines and Equipment**

**A. General Requirements**

6. Equipment or material of a non insulating substance that is not bonded to an effective ground and which extends into an energized area, and which could approach energized equipment closer than the distance specified in Rule 441A, shall be treated as though it is energized at the same voltage as the line or equipment to which it is exposed.

**Temp & Weather:**

Clear and Sunny

Approximately 80°

**Investigated By:** \_\_\_\_\_ **Name:** \_\_\_\_\_ **Company:** \_\_\_\_\_

**Signed:** 

**Date:** 9-3-09

**Reviewed By:** \_\_\_\_\_ **Name:** \_\_\_\_\_ **Company:** \_\_\_\_\_

**Signed:** 

**Date:** 9/3/09

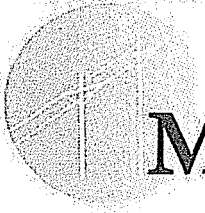
**Attachments:**

- A. Meade County RECC Accident Report**
- B. KPSC Accident Location Maps**
- C. KPSC Photographs of Accident Site**

**Attachment A**

---

**Meade County RECC Accident Report**



# Meade County RECC

P.O. Box 489  
Brandenburg, KY 40108-0489  
(270) 422-2162  
Fax: (270) 422-4705

8/18/09

Mr. Steve Kingsolver  
Kentucky Public Service Commission  
211 Sower Blvd.  
Frankfort, KY 40602

Steve,

Enclosed with this cover letter is the 7-day report resulting from the investigation concerning the electrical contact of an employee of Bowlin Energy, our electrical contractor. You will find drawings, maps, tailgate session description, outage report, and pictures with a CD of those pictures with the report. If you should need further information or have questions, you may contact me at (270) 422-2911, ext. 3149.

Sincerely,

David R. Poe, P.E.  
Vice President of Operations & Engineering

Enclosures





the substation from non-reclose around 3:50 EDT. Willie Sheppard pulled Patrick off of the truck  
with a extendo stick.

Witness # 2

Name Bobby Gooch - Class A lineman, 7 years experience (8 weeks with Bowlin)

12300 Hwy 1247

Waynesburg, KY 40489

Phone: Home \_\_\_\_\_

Cell (606) 510-9957

Statement Mr. Gooch was in the bucket. Ron, the foreman, asked him to check the slack in the rope/wire.

Mr Gooch reported to him that there was about 3' of clearance between it and the hot phase below  
and headed down in the bucket. Patrick went over to tighten it. Then he heard Ron say "its got him!"

Mr. Gooch was still in the bucket when Willie Sheppard pulled Patrick away with the extendo

slick. Mr. Gooch grabbed a fire extenguisher and put out the fire on the truck and grass while the  
others attended to Patrick.

Witness # 3

Name Jerry Conder - groundman/operator (31 years experience)

Address 2279 Elk Cave Rd.

Gravel Switch, Ky 40328

Phone: Home (606) 346-3053

Cell (859) 319-7346

Statement Mr. Conder stated that Ron (forman) asked someone to tighten up the brake. Mr. Conder headed

across the road to the other truck to get the rubber gloves to adjust the brake when he heard

Patrick grunt and then he seen a small flash/fire @ Patrick's hand. Mr. Conder headed back towards

the accident scene and seen Willie Sheppard pull Patrick away from the truck with an extendo

slick. He stated that Patrick was conscious the entire time.

Witness # 4

Name Kyle Smither - groundman (9-10 months experience)

Address 282 Sparta/Sanders Rd.

Sanders, KY 41083

Phone: Home (502) 347-9486

Cell (502) 525-9115

Statement Mr. Smilther stated that he and the rest of the crew (with the exception of Bobby Gooch) was standing

behind the bucket truck when Ron yelled for someone to tighten up the wire. Mr. Smilther left to do

it himself when Patrick cut in front of him and went over to do it himself. Patrick yelled when he

touched the brake. Willie Sheppard pulled him away from the truck using a 'finger' (extendo) stick.

Witness # 5

Name Dallas York - Class A lineman (30 years experience - 24 with Richardson/Bowlin)

Address 284 Sparta/Sanders Rd.

Sanders, Ky 41083

Phone: Home (502) 347-5615

Cell (502) 525-3283

Statement Mr. York was flagging traffic about 250' from the accident scene. He looked over and seen Bobby Gooch using the fire extinguisher around the truck and the truck was smoking. He heard someone yell on the radio for Billy to come and that someone was hurt (Mr. York had a handheld radio with him for flagging purposes.

Witness # 6

Name Mike Tucker - Class A lineman (lineman since 1974, ~ 1 month with Bowlin)

Address 437 Hwy 1805

Monticello, Ky 42733

Phone: Home (606) 348-1831

Cell (606) 307-0442

Statement Mr. Tucker was walking away from the accident location towards Mr. York when he happened to look back and see smoke around the wire truck. He seen Willie Sheppard pull Patrick away from the truck with a stick

Witness # 7,8,9

Names Willie Sheppard, Tyler Hale, Brandon Hale

Address \_\_\_\_\_

Phone: Home \_\_\_\_\_

Cell \_\_\_\_\_

Statement Witnesses were not available; they were at the hospital with the victim during the investigation.

Law  
Enforcement

Breckinridge County Sherriff Department

Fire  
Department

Harned Volunteer Fire Department

EMS

Breckinridge County EMS

Equipment or product

Name/type: Wire stringing truck

Examples: antenna, auger, crane, construction equipment

Manufacturer name 1988 GMC 7000 Series

Model # \_\_\_\_\_ Serial # 5MADN4024AA017089 trailer

Cooperative/Contractor Foreman at scene: Bowlin: Ron Douglas, MCRECC: Keith Mattingly, David Poe, Billy Wardrip

## STATEMENT

The crews were upgrading an existing three-phase line near Harned, KY extending south along Hwy 259/79. The three energized phase wires were set out on arms away from the new wire that were being pulled in with the exception of one that was left attached to the verticle pole the wire truck was next to. The foreman (Ronald Douglas) notified Keith Mattingly (MCRECC's district foreman) that it was clear to remove the non-reclose function from the reclosure at the substation which was done at approximately 3:50 PM, EDT. The first phase wire was apparently pulled into place without any issues. The second phase-wire was being pulled in when the foreman asked Mr. Gooch, who was in the bucket at the time, to check on the clearance between the new wire being pulled and the hot phase wire located beneath it. Mr. Gooch reported there was about 3' of clearance. Ron, who was in his pickup near the wire truck, yelled to the crew, who was standing behind the bucket truck, to tighten up the wire being pulled in. Patrick Haste, a Class A lineman, went over to the wire truck to tighten the brake. The pulled wire contacted the energized one at that time and Mr. Haste became energized along with the brake. Because the wire, brake, or the truck was not grounded, there was no electrical flash or any high fault currents available to operate the reclosure. The 7200 Volts began breaking down the tires on the truck only after the wood of the truck bed began to degrade along with the current that was passing through Patrick allowed. Willie Sheppard, one of the nearby linemen, grabbed an extendo stick and pulled Patrick away from the energized truck. Patrick was tended to by his crew members until the local EMS arrived. The helicopter was called soon after that and he was transported to the University of Louisville Hospital where his right arm was amputated above his elbow. He also suffered burns on his right side where he is receiving skin grafts.

It was noted by the foreman and a couple of crew members that the first wire was pulled in at a tension of 700 lb. in order to supply an adequate amount of tension on the wire and prevent it from sagging. It was also stated that the wire brake on the wire truck was not adjusted between pulls. During the investigation, the tension was informally tested; the wire was easily pulled by one hand through the rollers of the brake.

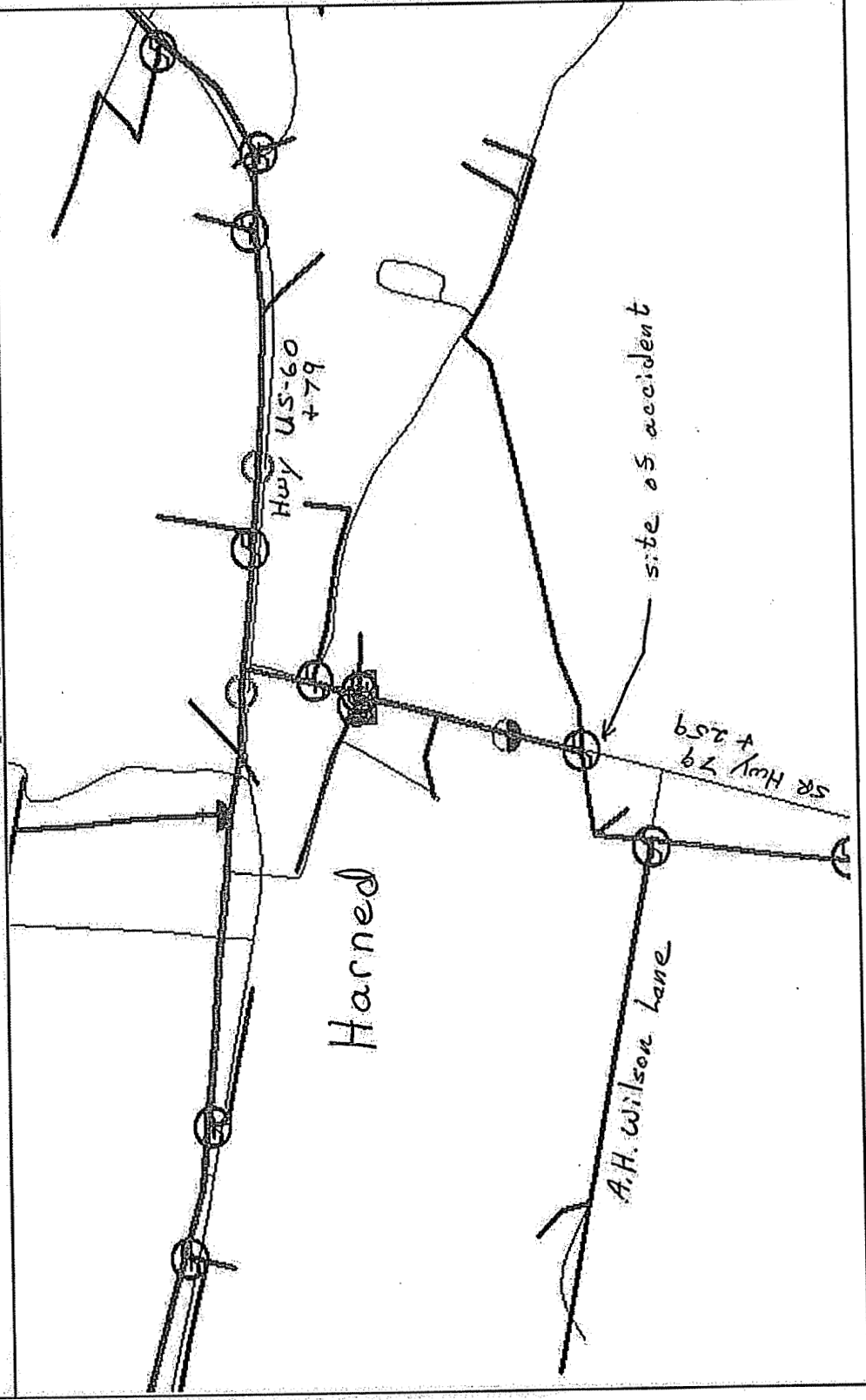
Other miscellaneous information: All Bowlin personnel were wearing Fire-Retardant clothing (pants and shirts), shirts). The total length of the wire pull was 1200 ft. Mr. Steve Kingsolver of the Kentucky Public Service Commission was called and notified of the incident at 5:33 PM EDT, approximately 30 minutes after MCRECC was notified by Ron Douglas.

Measurements/Diagrams:

Accompanying the report.

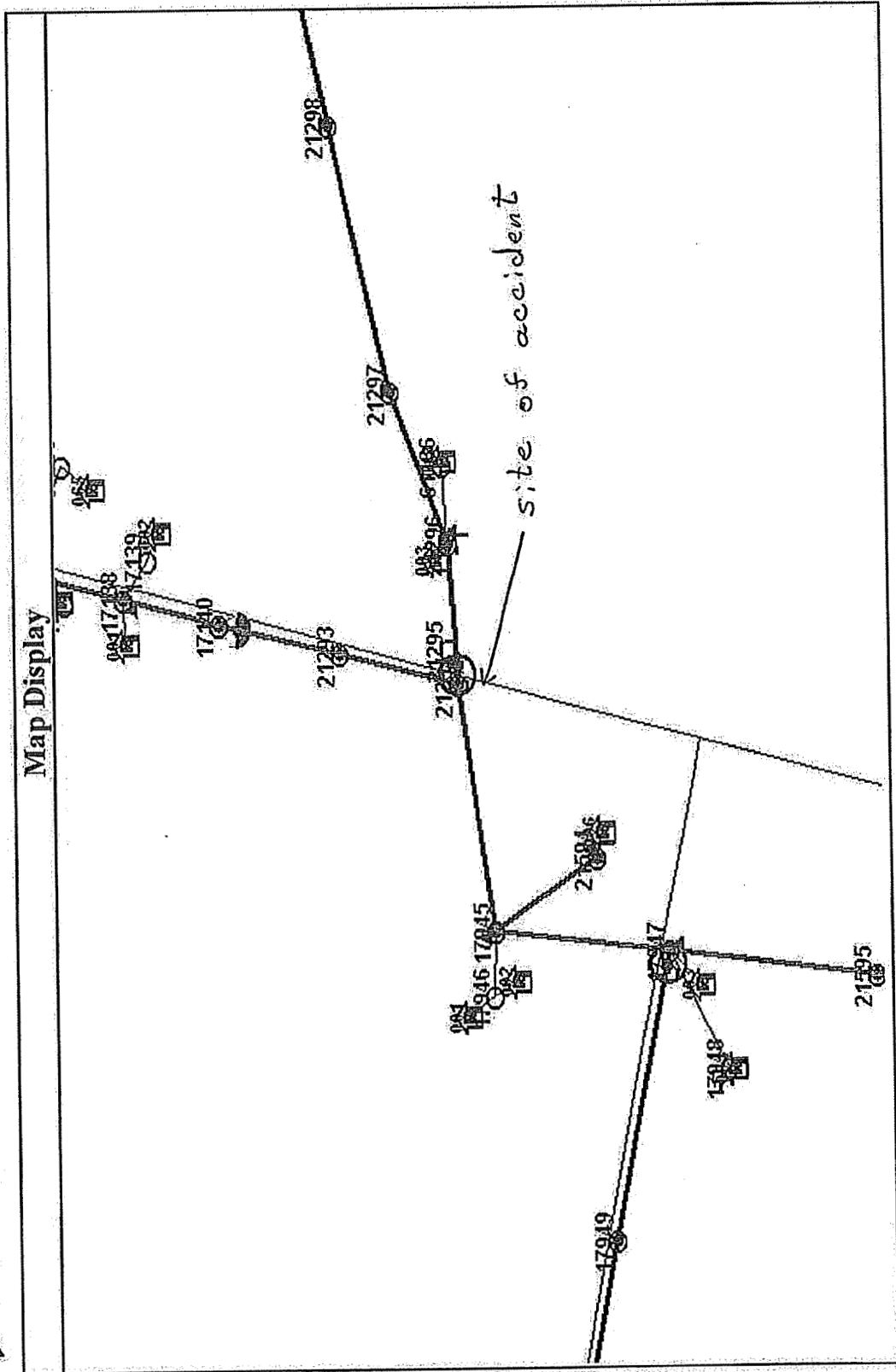


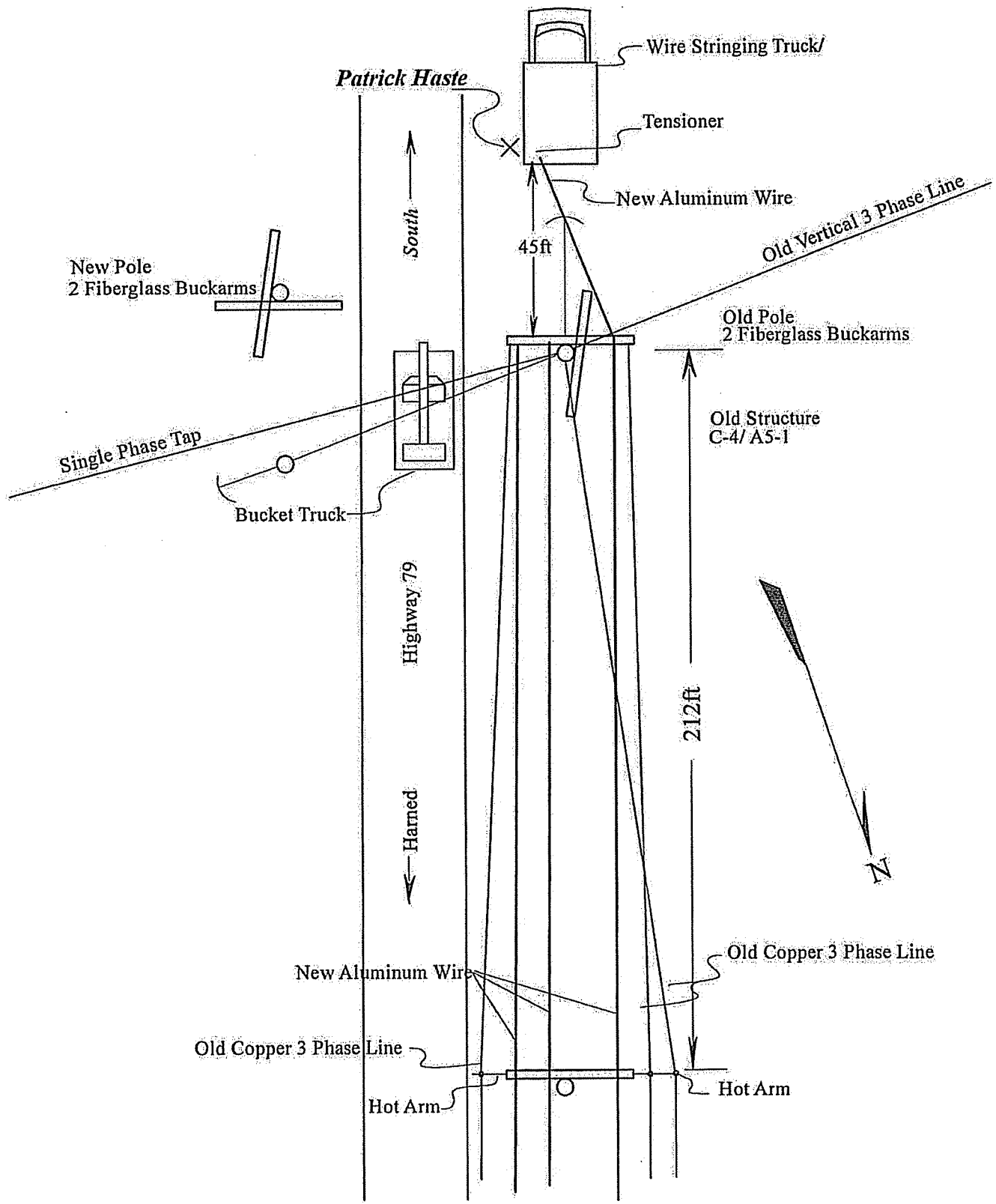
Map Display





Map Display





Bowlin Contact  
8/12/2009

# BOWLIN ENERGY SERVICES, LLC DAILY TIME

R2733.B

JOB # 5001H	DATE 8.18.09	CO-OP meade Co
-------------	--------------	----------------

CODE

A = POLE CHANGE D = Chg TRANSFORMER

B = CONVERSION E = UNDER GROUND

C = RETIREMENT F = OTHER

CITY <u>Hardinsburg</u>
COUNTY <u>Breckinridge</u>

EMPLOYEE #	NAME	CODE	HOURS	
			TOTAL	EQUIP #
	Ronald Douglas		12	1130
	Dallas York		12	1243
	Willie P. Sheppard		12	1183
	Patrick Haste		12	1085
	Bobby Grooch		12	1052
	Jerry Conder		12	Rope Machine
	Brandon Hale		12	
	Kyle Smithers		12	

NOTES: change pole C-1 to C-12 lay out old line put in AMK  
hang guy 5 pull rope & wire

APPROVAL

FOREMAN <u>Ronald Douglas</u>
OP'S MANAGER

ATTENDING EMPLOYEE INITIALS

RD	DY	KS	BG	J.C.
PH	BH	WS		

ON SITE SAFETY MEETING	TIME	JOB#
------------------------	------	------

SAFETY RULES REVIEWED	YES <input checked="" type="checkbox"/>	NO <input type="checkbox"/>	CHECK ONE
TRUCKS AND EQUIPMENT REVIEWED	YES <input checked="" type="checkbox"/>	NO <input type="checkbox"/>	CHECK ONE
SPECIFIC LIMITATIONS DISCUSSED	YES <input checked="" type="checkbox"/>	NO <input type="checkbox"/>	CHECK ONE
PPE INSPECTED BEFORE STARTING	YES <input checked="" type="checkbox"/>	NO <input type="checkbox"/>	CHECK ONE
SPECIAL CONDITIONS AT SITE	YES <input type="checkbox"/>	NO <input checked="" type="checkbox"/>	CHECK ONE

COMMENTS: Howard's live lines Traffic using buckets  
Diggers slip & Falls

SUPERVISOR



Outage Order  
(WORD:\Forms\Outage)

Date off 8/12/09 Time off 5:01 am pm Date on 8/12/09 Time on 5:55 am pm By Guy  
 Name Brock Bd of Ed Account # 33-030-001

Phone # \_\_\_\_\_ Meter # \_\_\_\_\_ Location \_\_\_\_\_

Name \_\_\_\_\_ Account # \_\_\_\_\_

Phone # \_\_\_\_\_ Meter # \_\_\_\_\_ Location \_\_\_\_\_

PROBLEM contractor shorted line out

ACTION TAKEN cleaned up line & made sub ock hot

Big Rivers \_\_\_\_\_ Line Hardware \_\_\_\_\_ Trees out RW \_\_\_\_\_  
 Birds/animals \_\_\_\_\_ Pulled Guy \_\_\_\_\_ Unknown \_\_\_\_\_  
 Broken pole \_\_\_\_\_ Pre-arranged \_\_\_\_\_ Other   
 Conductor \_\_\_\_\_ Public cause \_\_\_\_\_  
 Cutouts/OCB \_\_\_\_\_ Storms  \_\_\_\_\_  
 KVA \_\_\_\_\_ Trees in RW \_\_\_\_\_

OUTAGE HOURS \_\_\_\_\_  
 CONSUMERS AFFECTED 625

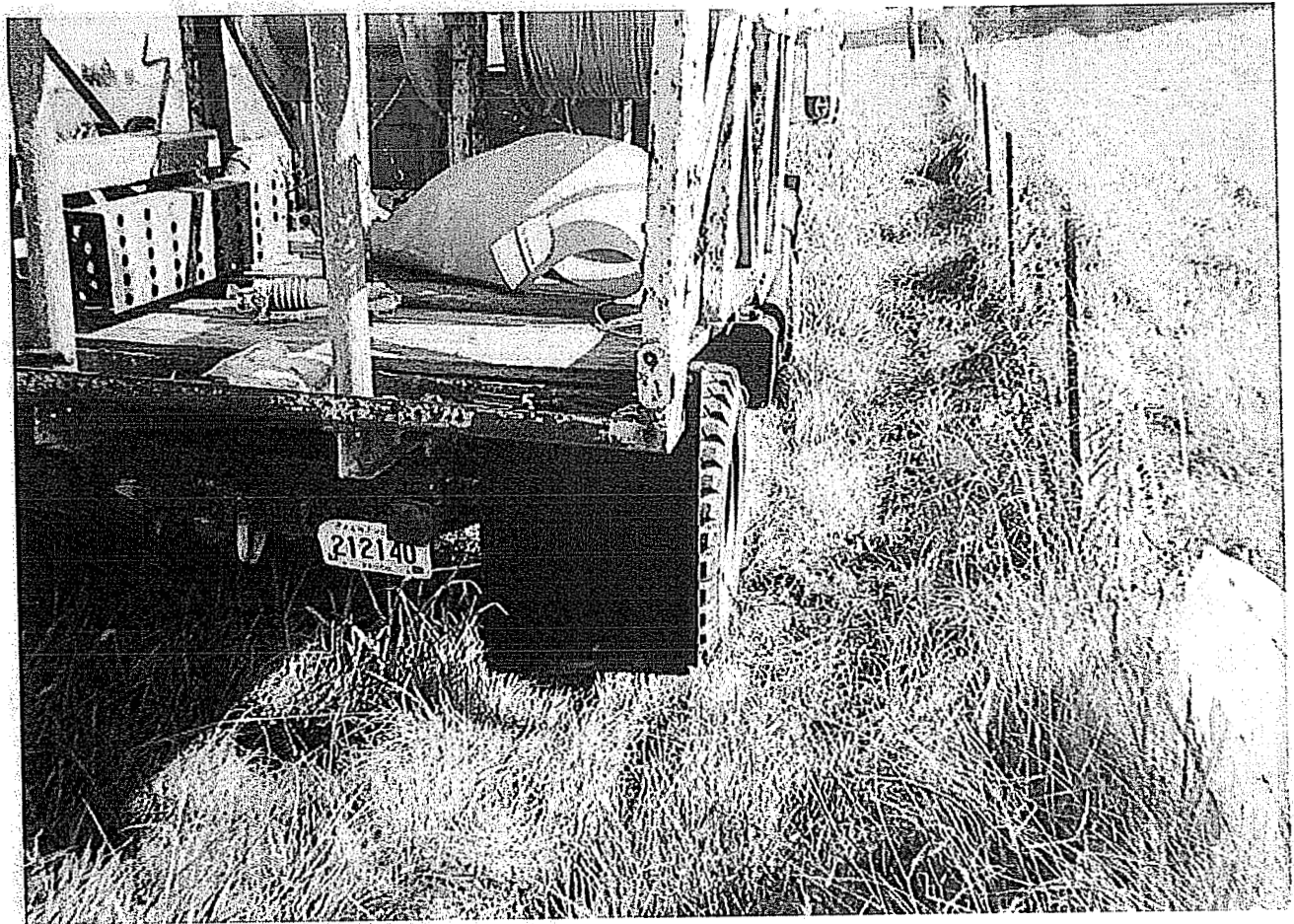
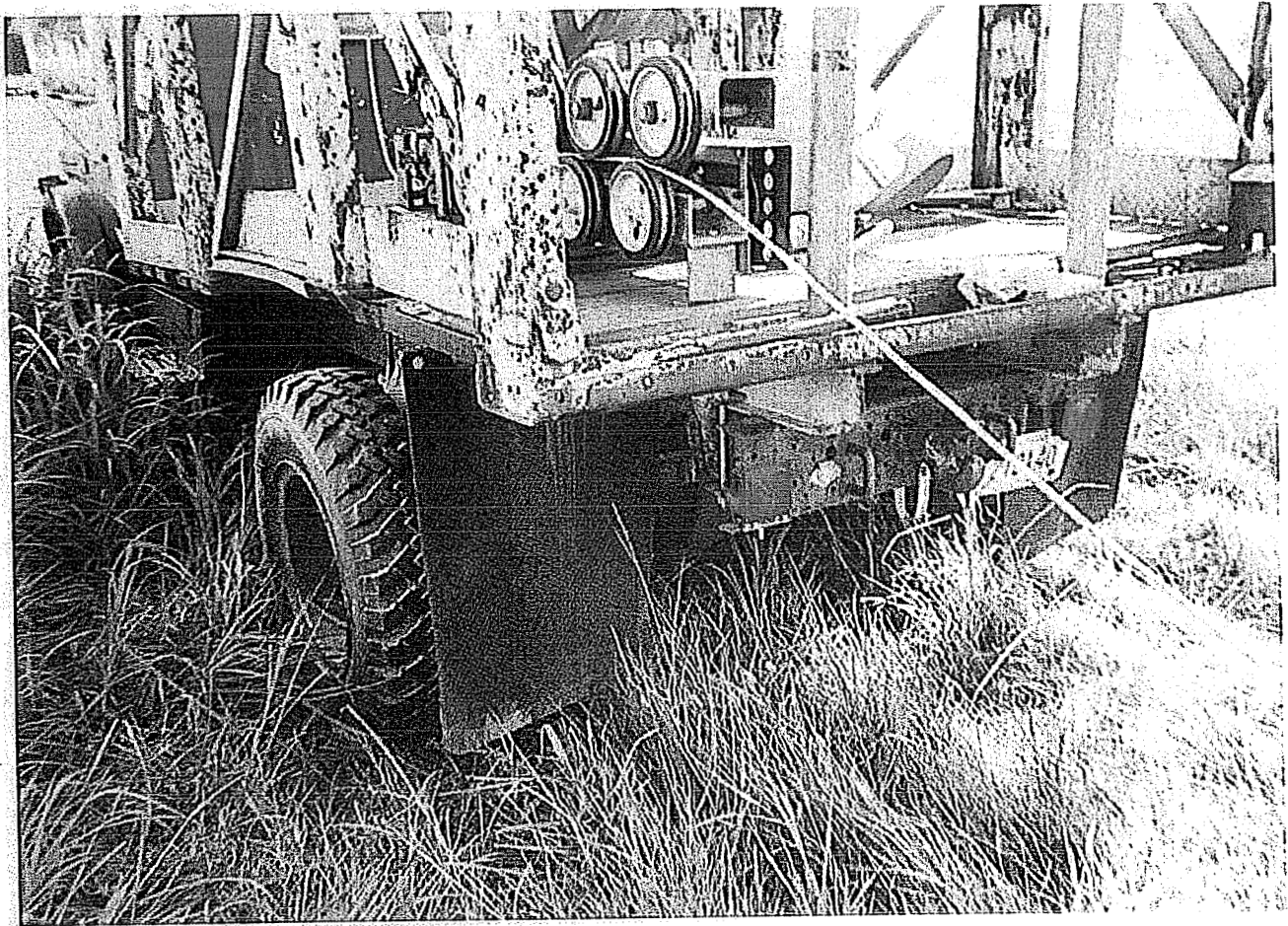
Circuit 1 Substation Harrod Circuit \_\_\_\_\_ Substation \_\_\_\_\_  
 Circuit \_\_\_\_\_ Substation \_\_\_\_\_ Circuit \_\_\_\_\_ Substation \_\_\_\_\_  
 Circuit \_\_\_\_\_ Substation \_\_\_\_\_ Circuit \_\_\_\_\_ Substation \_\_\_\_\_

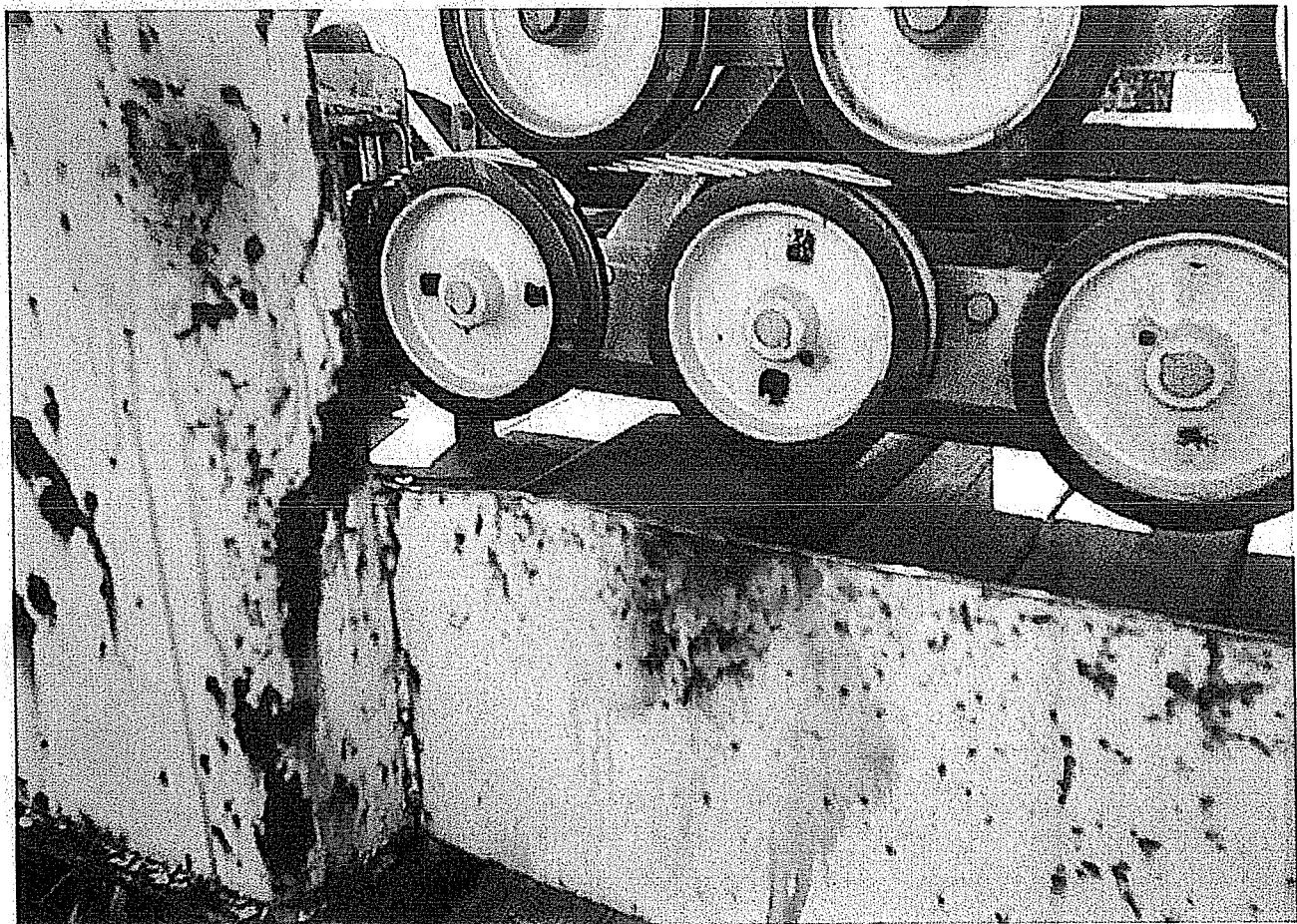
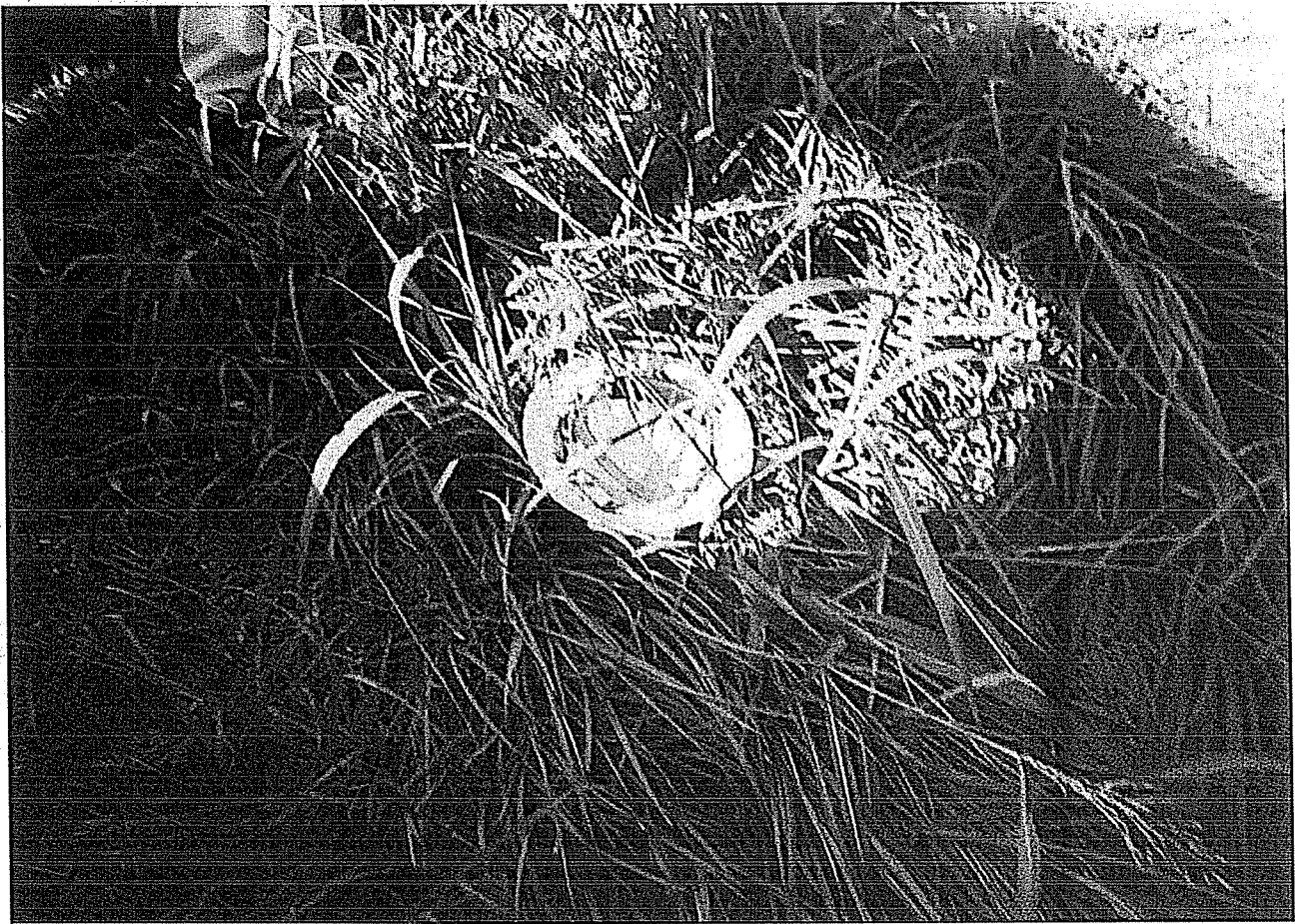
MATERIAL(s) USED:

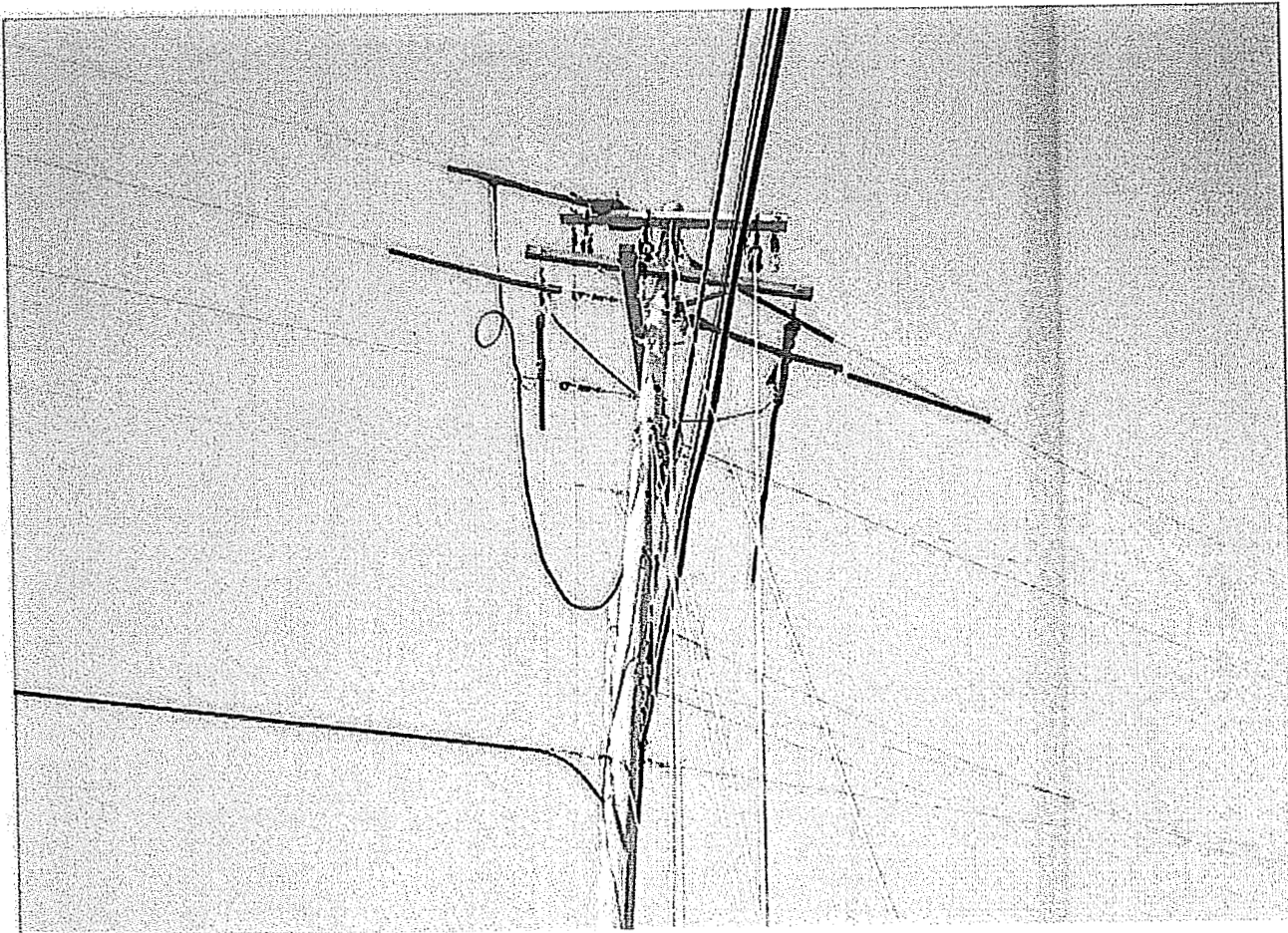
INV CODE	Description	Quantity	Ret'd	INV CODE	Description	Quantity	Ret'd
001	Adapters	_____	_____	310	Eye Nuts	_____	_____
005	Anchors	_____	_____	320	Cross Arm PINS	_____	_____
010	Crossarms	_____	_____	325	Clamp Type Pins	_____	_____
015	Arrestors	_____	_____	330	Pole Top Pins	_____	_____
020	Carriage Bolts	_____	_____	335	Stick Pins	_____	_____
035	Eye Bolts	_____	_____	615	Anchor Rods	_____	_____
040	Machine Bolts	_____	_____	625	Armor & Raplock Tie Rods	_____	_____
050	S. U. Bolts	_____	_____	650	Sec Lites 175W	_____	_____
065	Wood/Steel Braces PR	_____	_____	655	Sec Lites 400W	_____	_____
071	Stirrup Basket	_____	_____	685	Copper Sleeves	_____	_____
075	Service Clamps	_____	_____	690	Aluminum Sleeves	_____	_____
095	D. E. Clamps	_____	_____	695	Guy Wire	_____	_____
105	Clamps, 3 bolt	_____	_____	700	Square Washers	_____	_____
110	Hot Line Clamps	_____	_____	905	Wireholders, K-10	_____	_____
190	K-II Clevis	_____	_____				
195	J-6 Clevis	_____	_____				
210	Connectors	_____	_____				
225	Cutout/Arrestor comb	_____	_____				
230	Cutouts	_____	_____				
235	Disconnect Switch	_____	_____				
240	Guy Attachments	_____	_____				
252	Ugrd Cable Guards 8"	_____	_____				
270	Insulators, 2 1/2"	_____	_____				
275	Insulators, 3"	_____	_____				
280	Pin Type Insulators	_____	_____				
290	Susp & Bell Insulators	_____	_____				

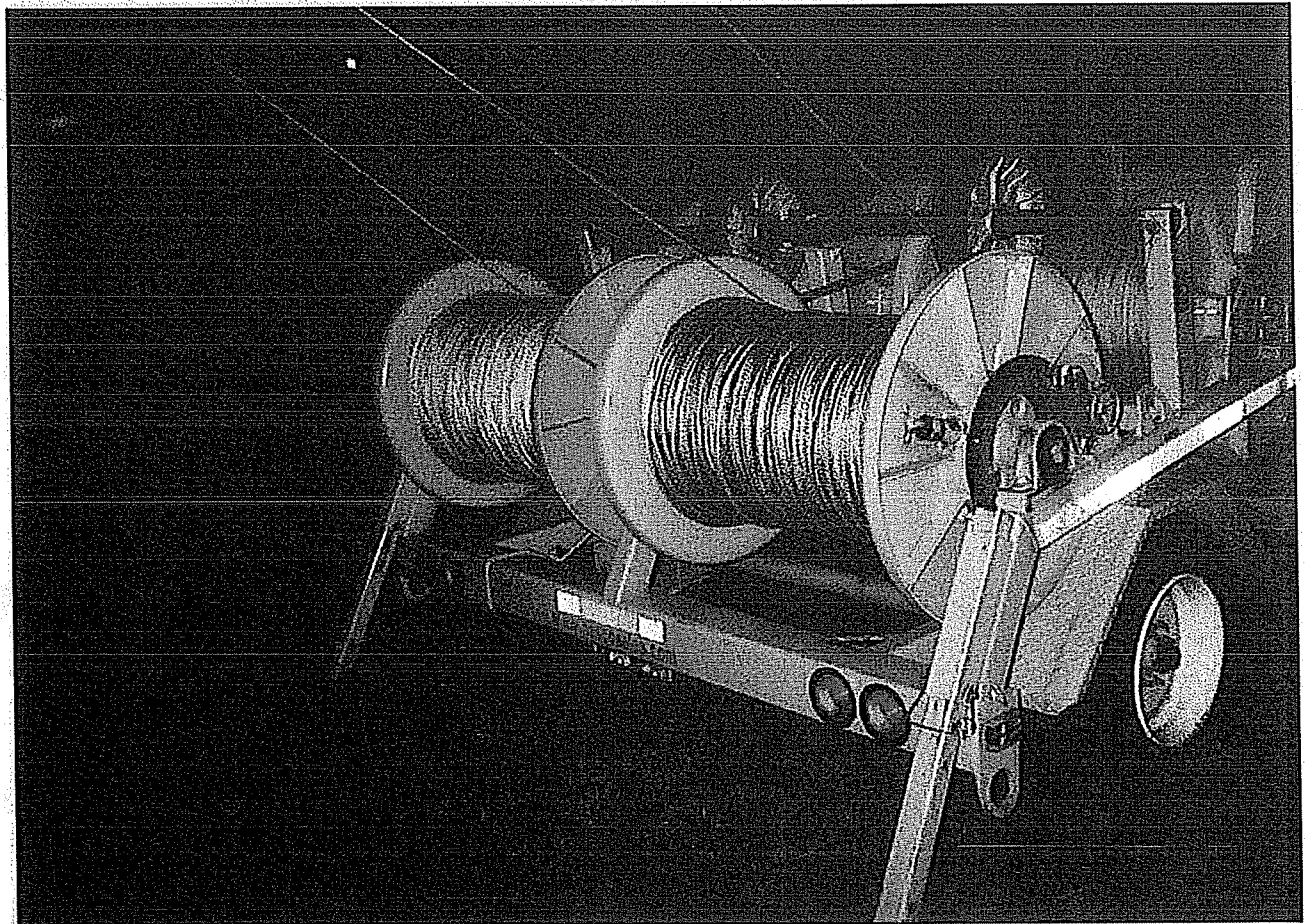
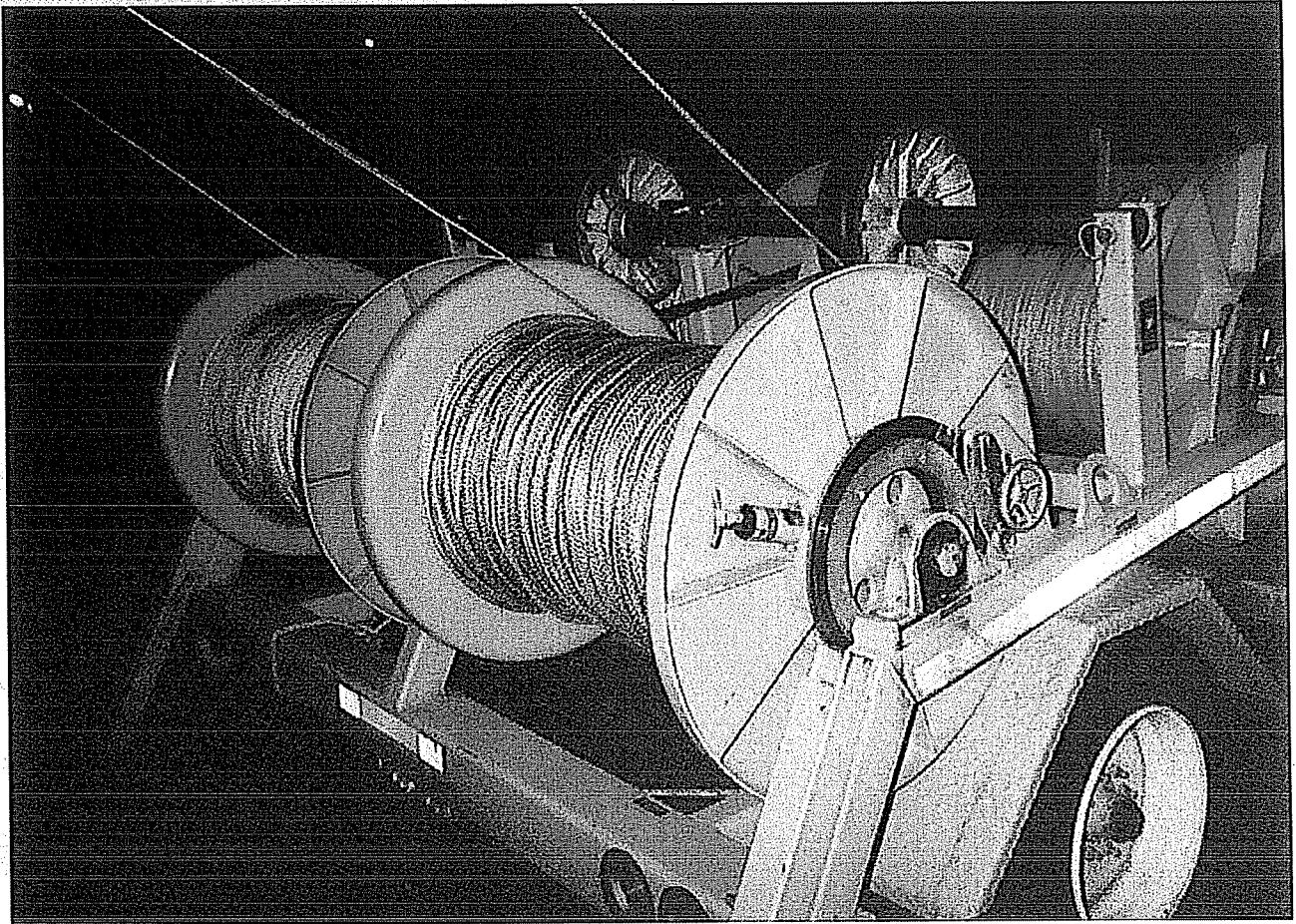
WIRE CODE	DESCRIPTION	Quantity	Ret'd
_____	_____	_____	_____
_____	_____	_____	_____
_____	_____	_____	_____

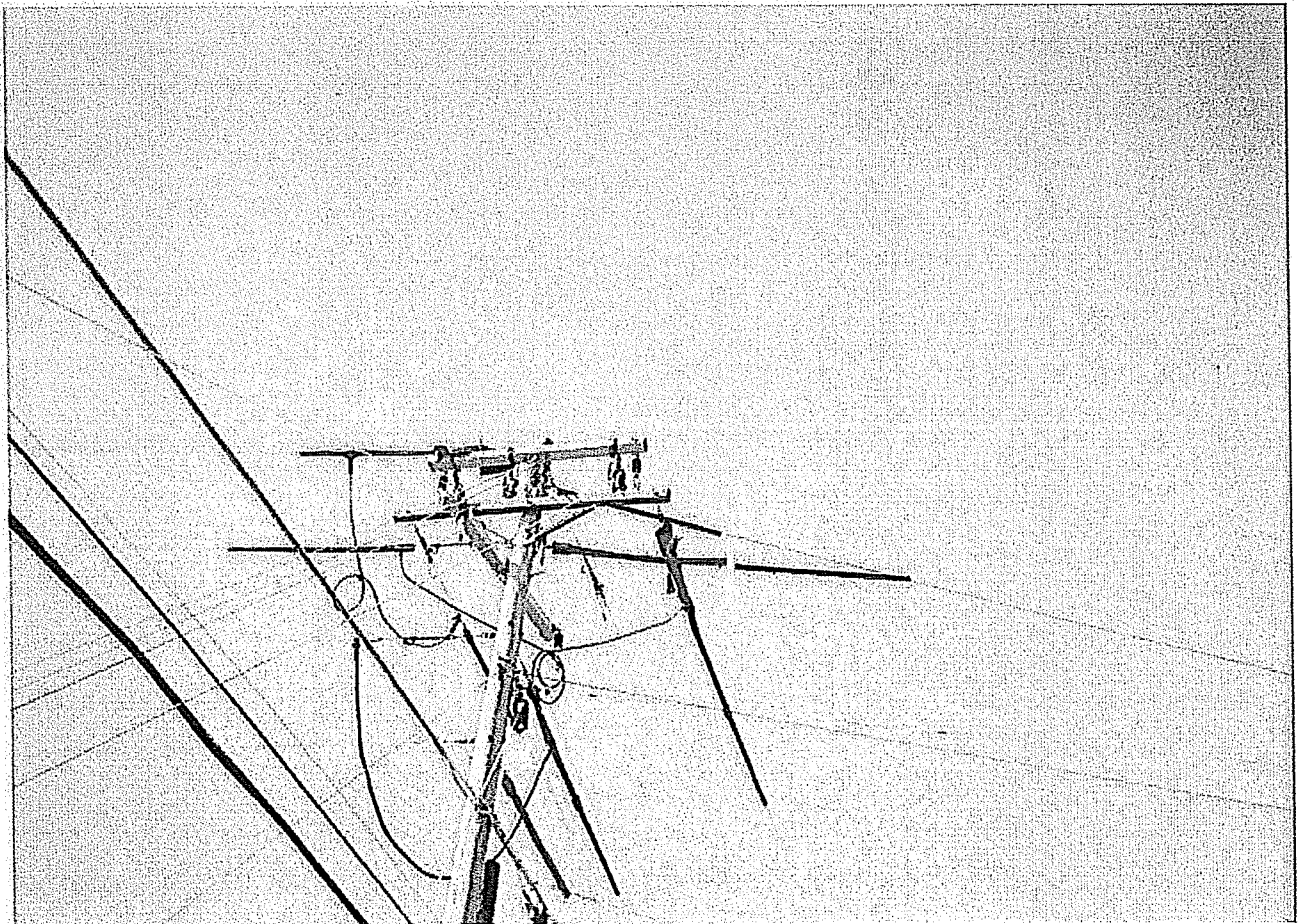
KVA INFORMATION \_\_\_\_\_ OTHER INFORMATION \_\_\_\_\_  
 Up \_\_\_\_\_ Sub \_\_\_\_\_  
 Down \_\_\_\_\_ Feeder \_\_\_\_\_ PH \_\_\_\_\_  
 Pole # \_\_\_\_\_ Phase \_\_\_\_\_ Breaker \_\_\_\_\_

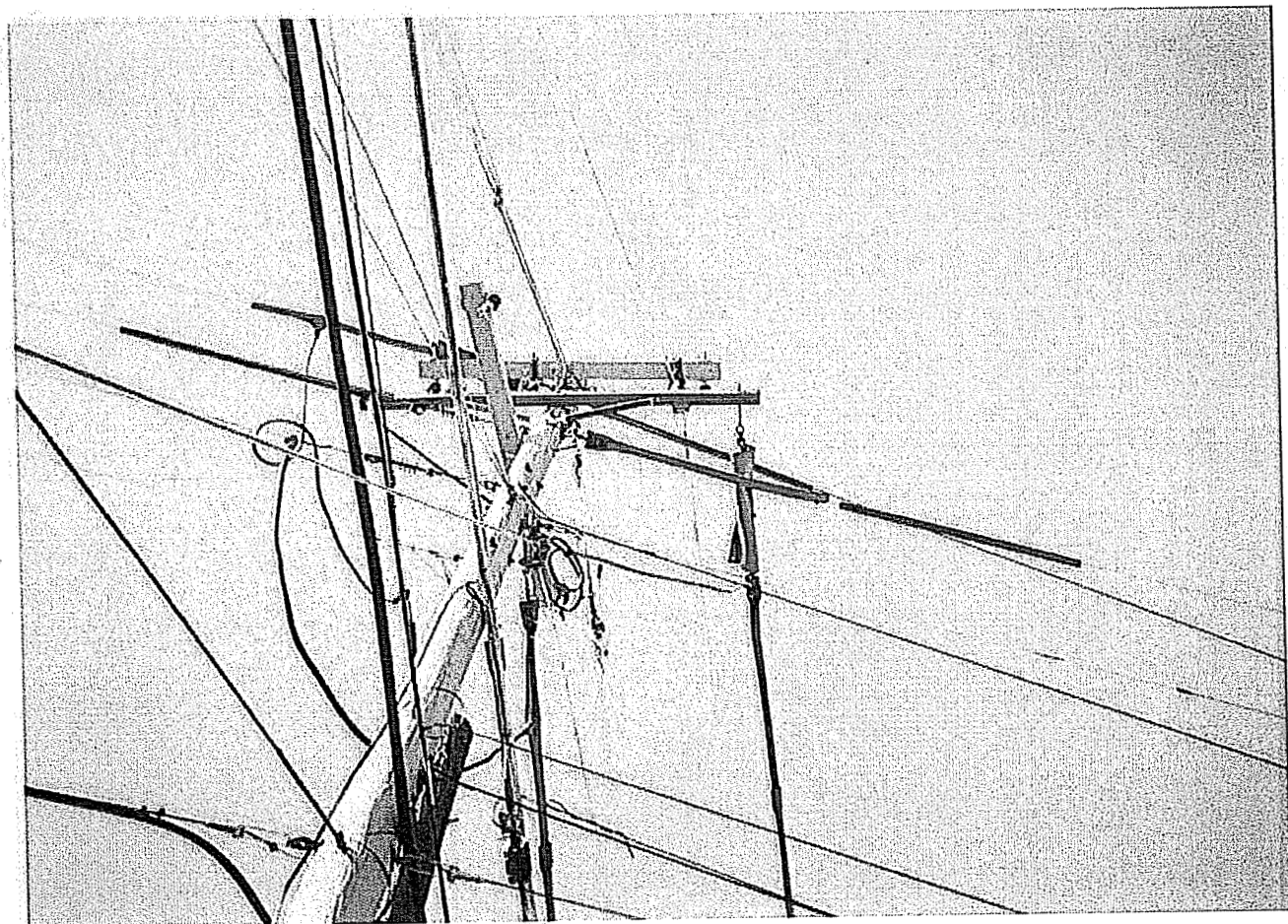
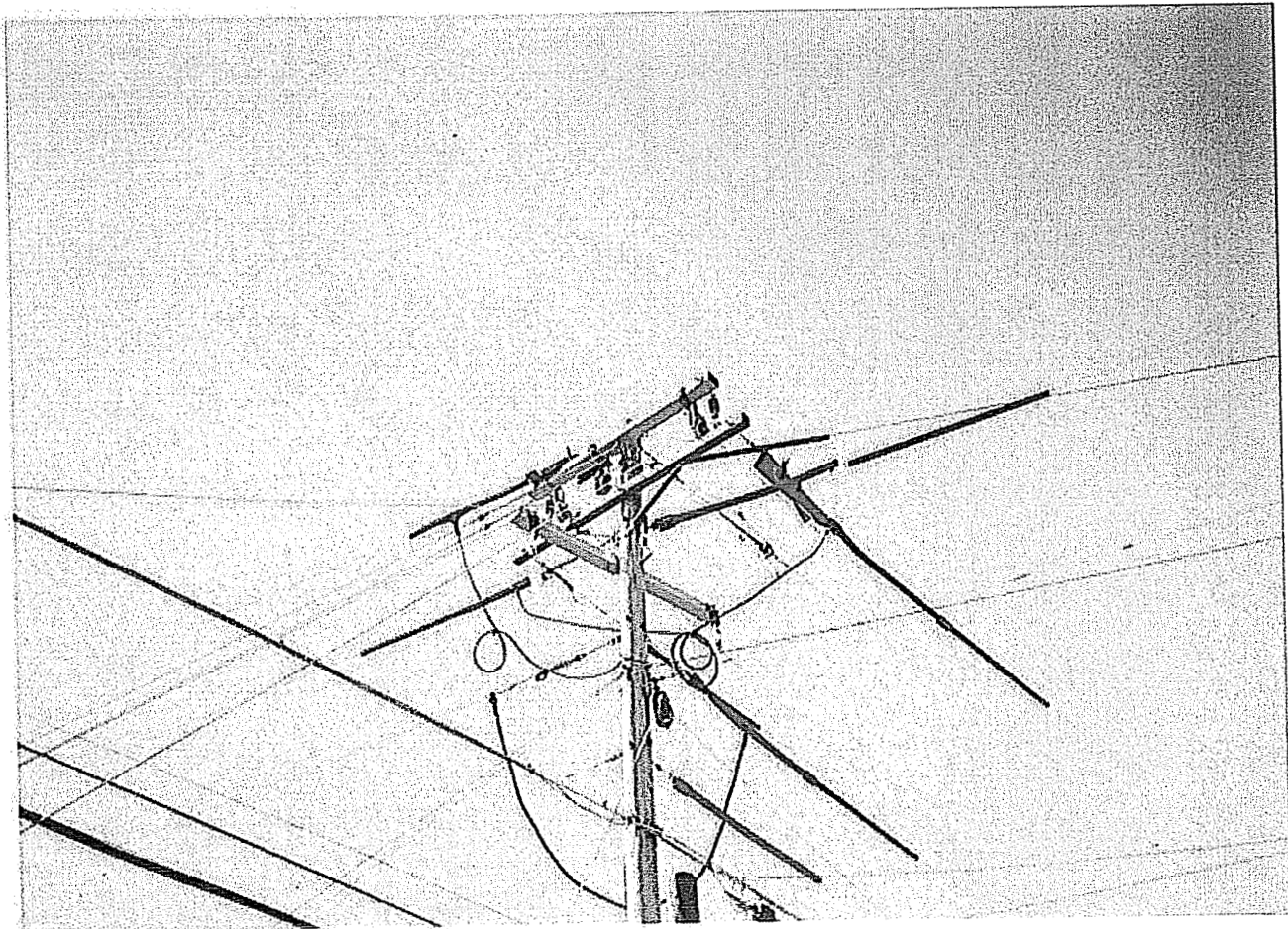


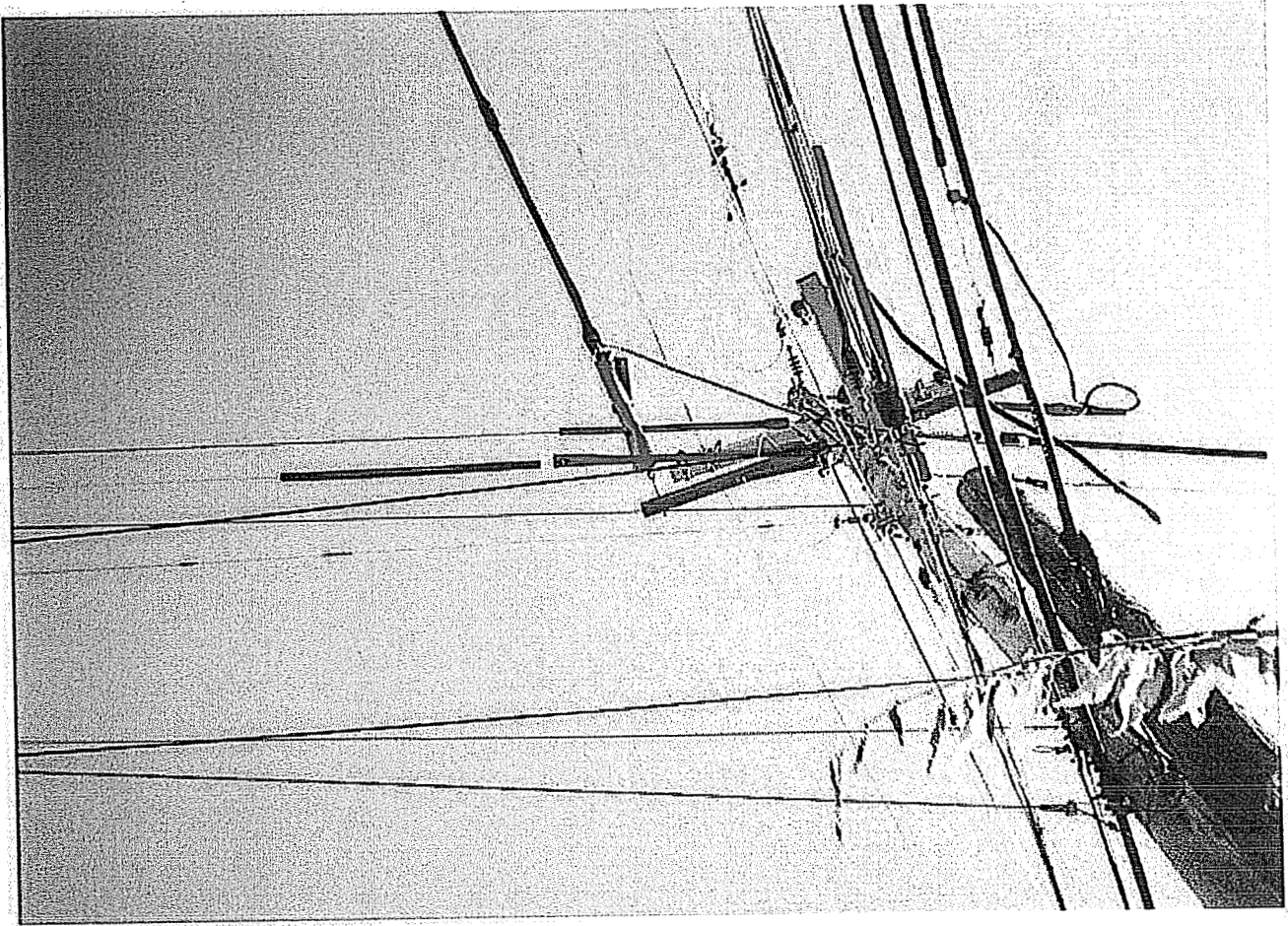




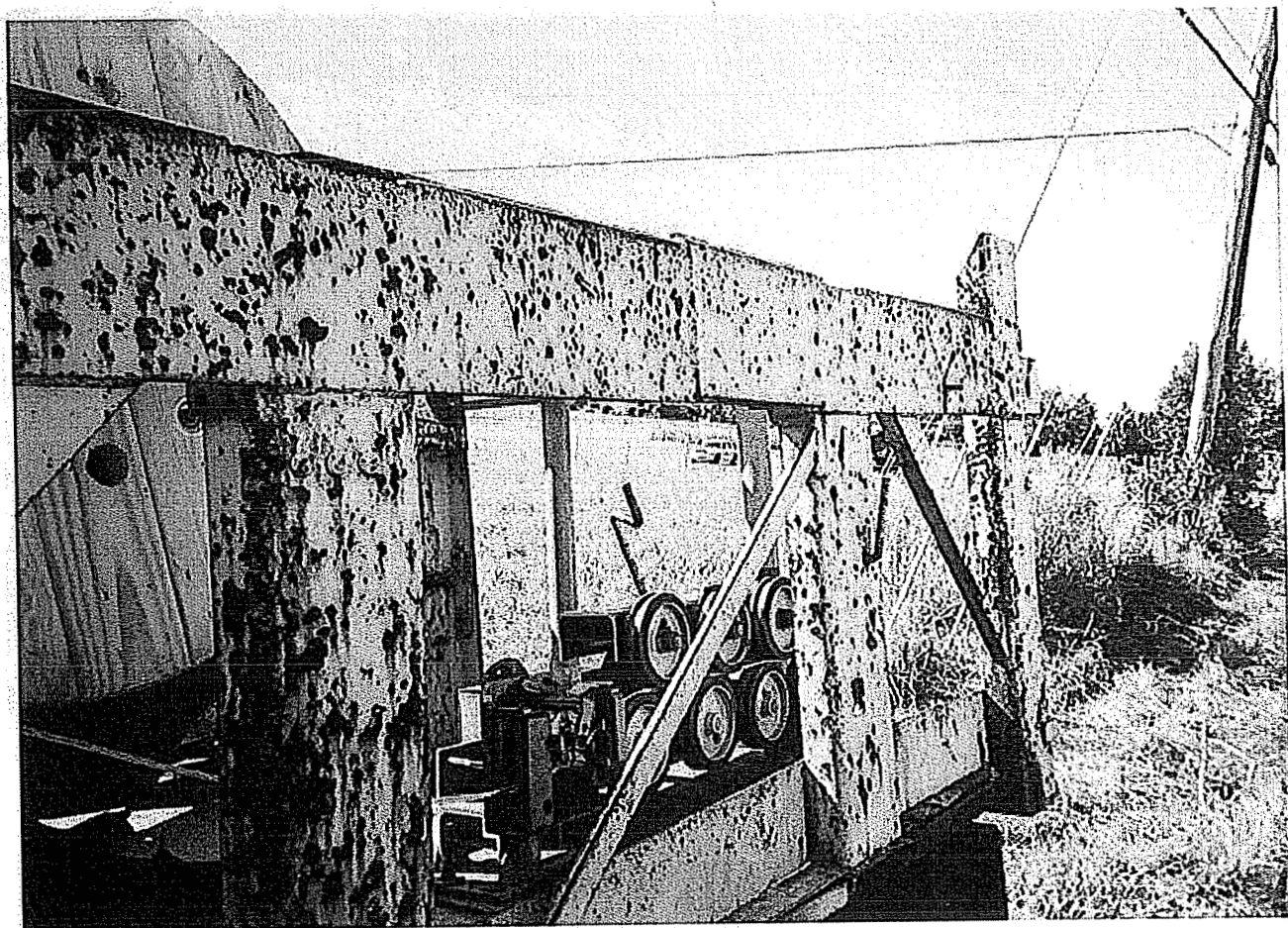
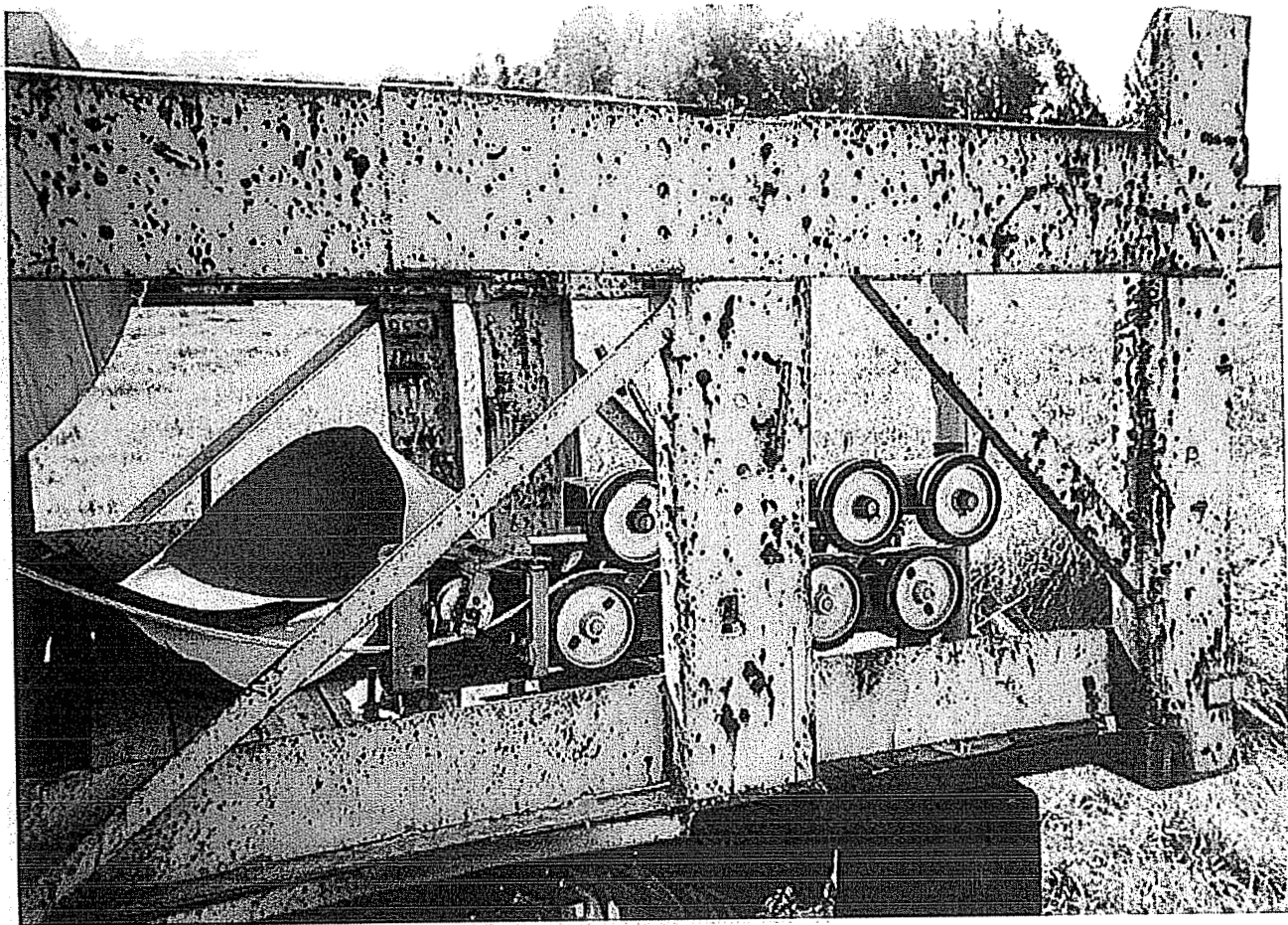


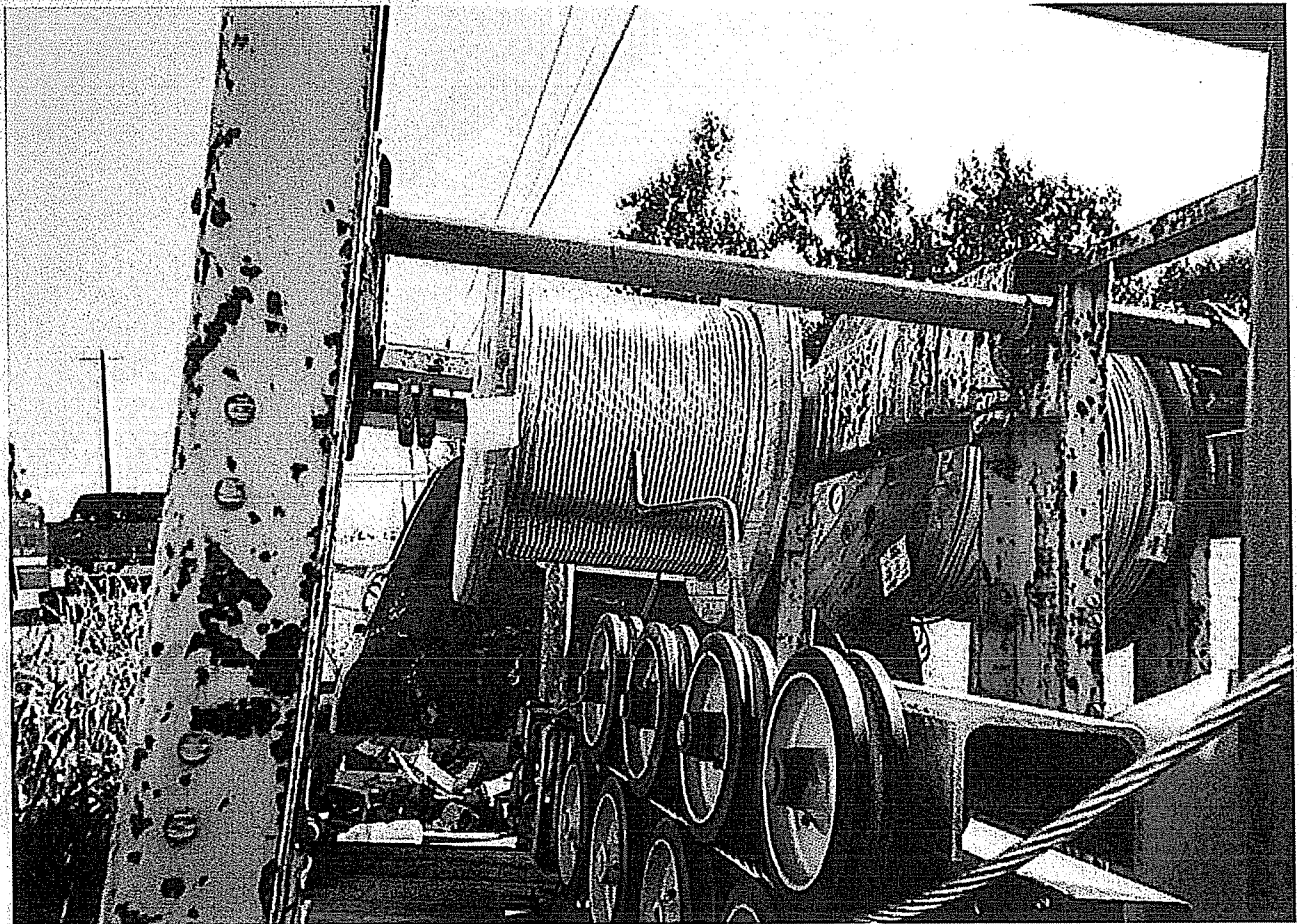


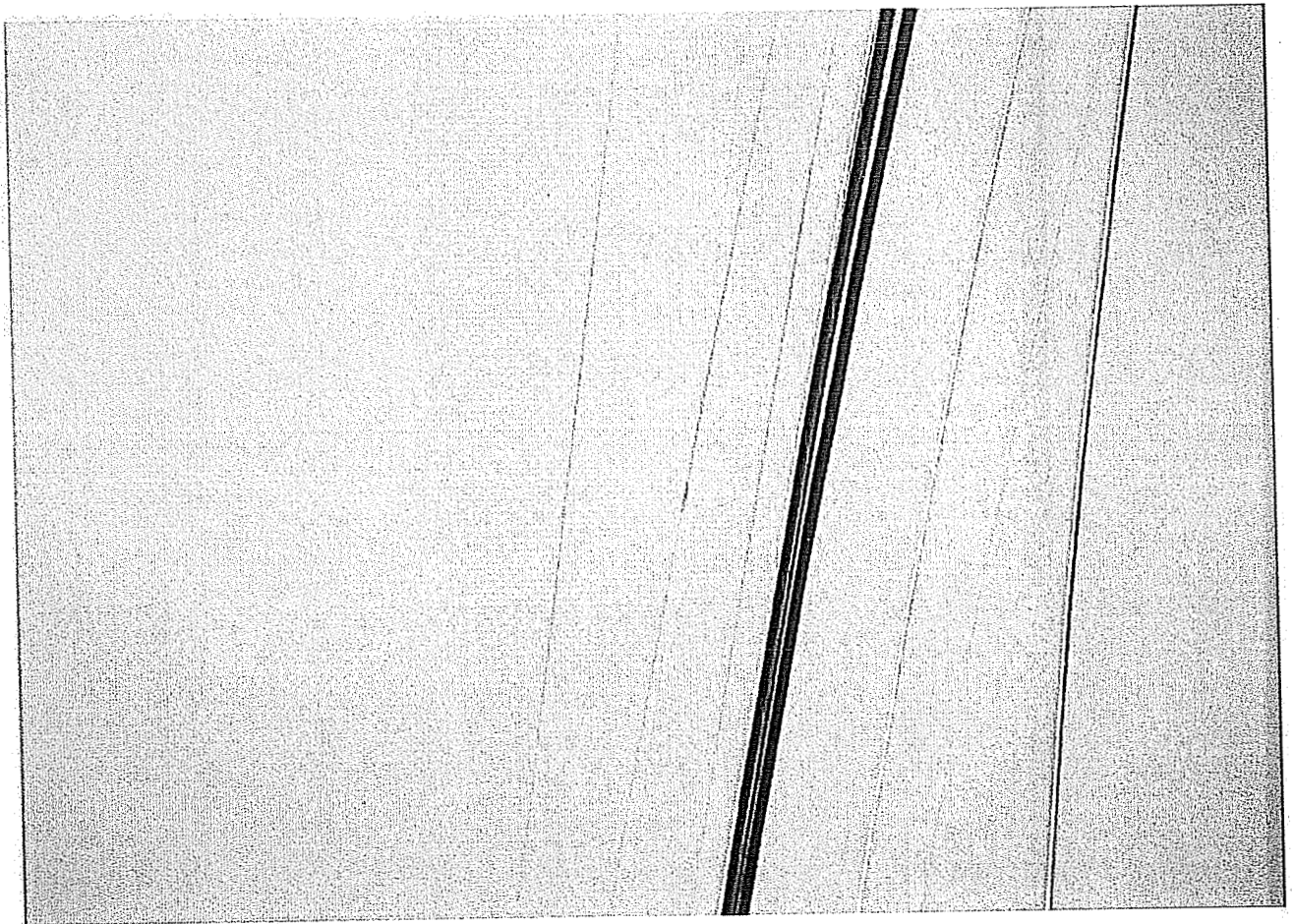
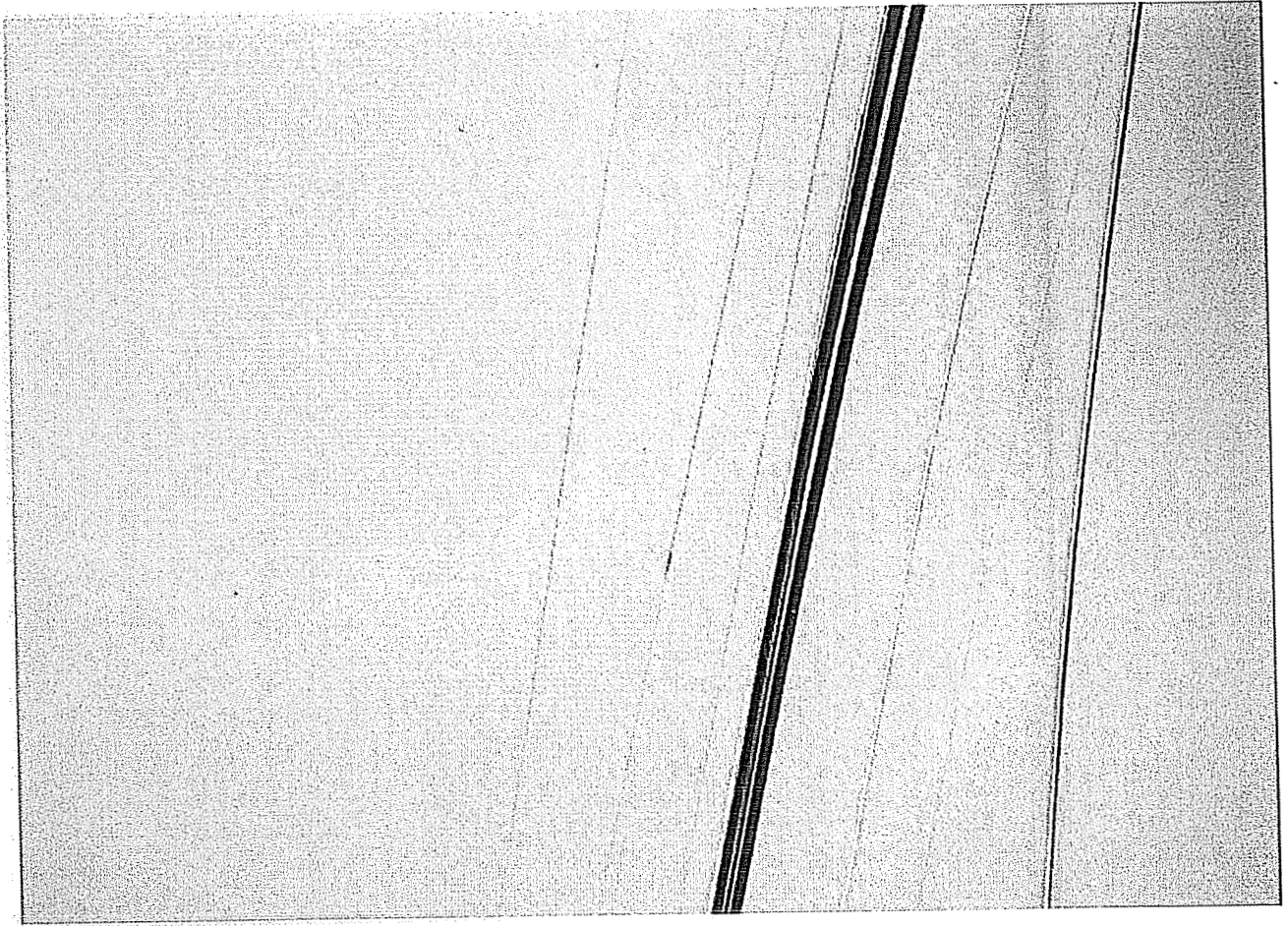


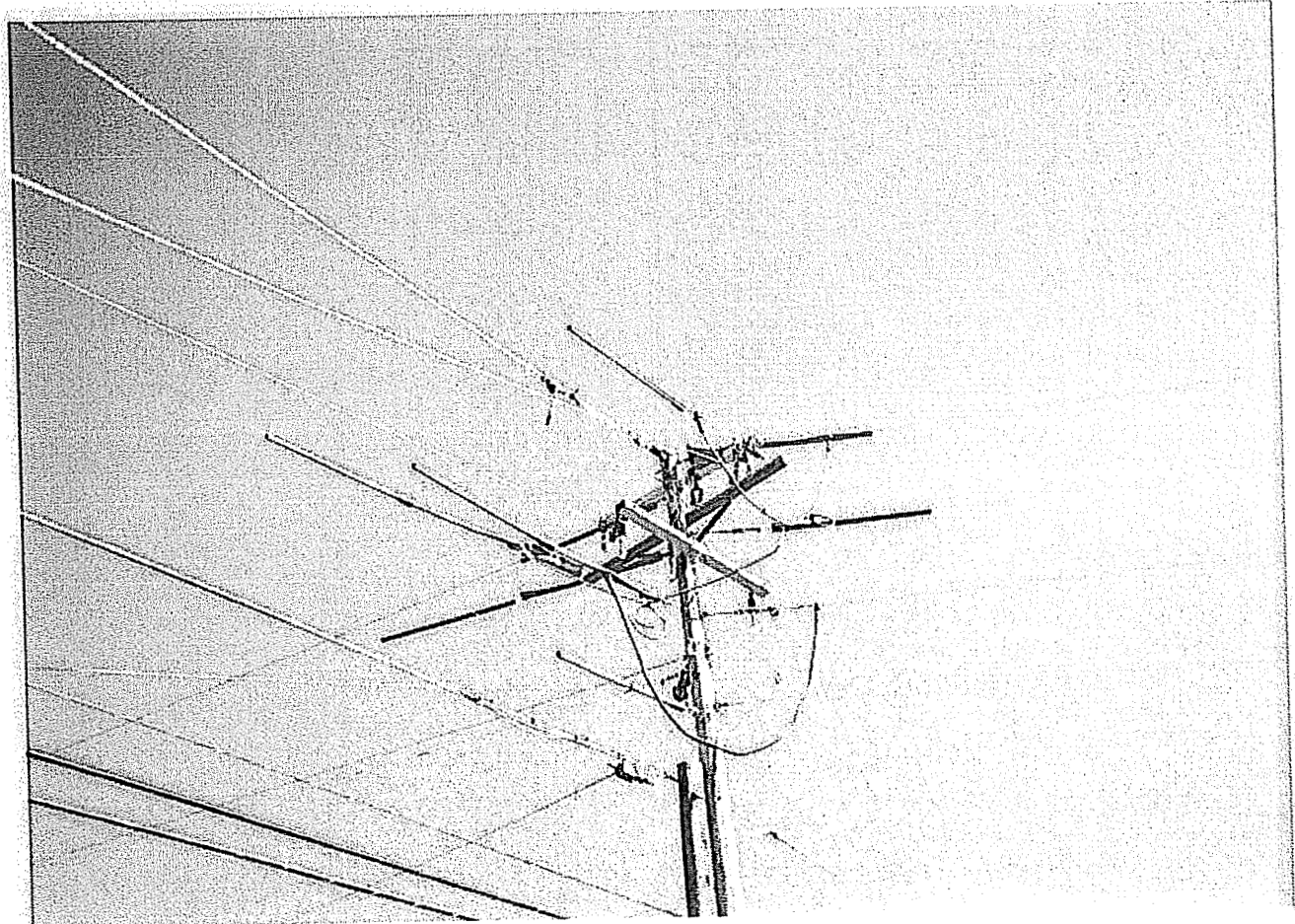
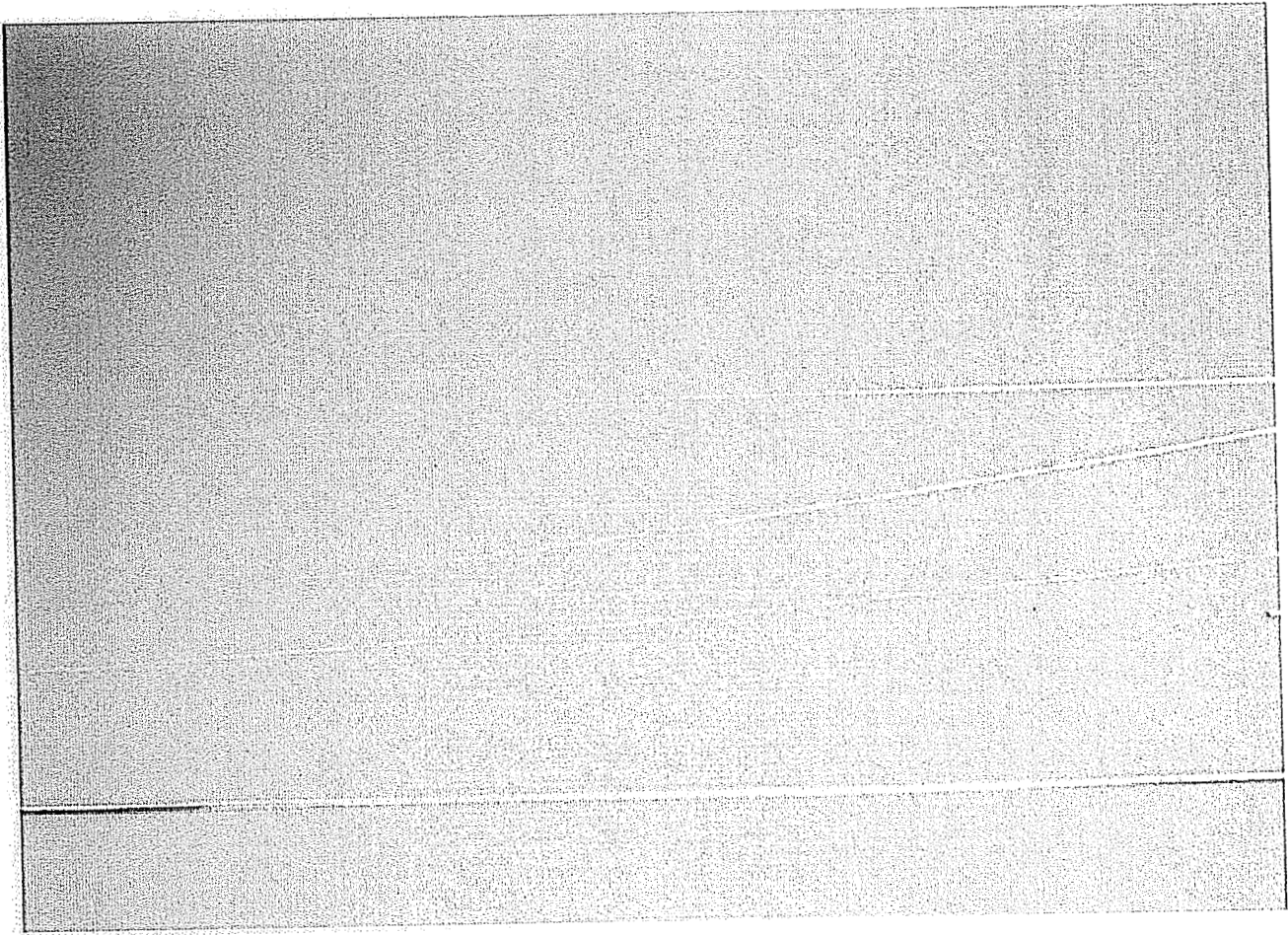


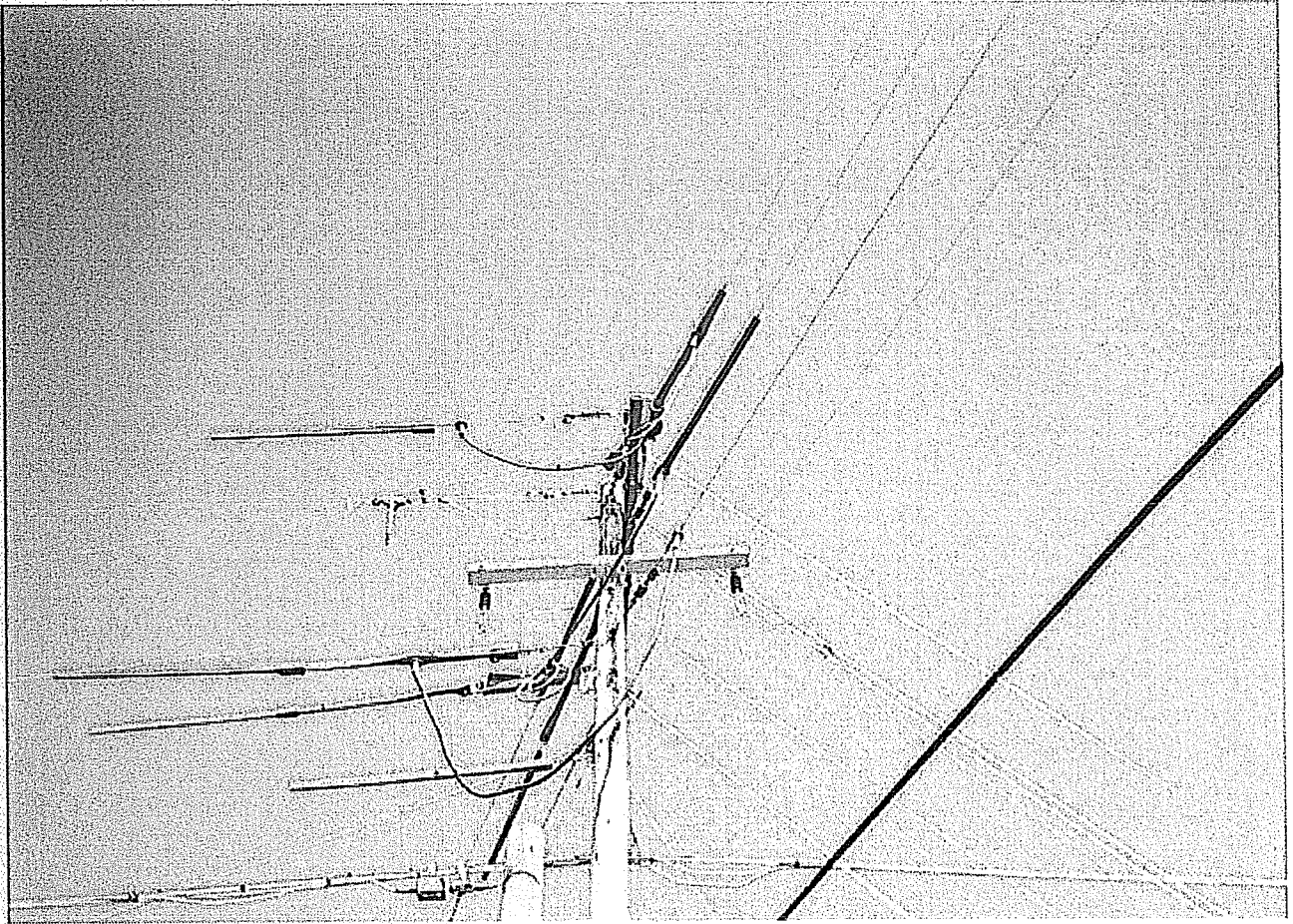




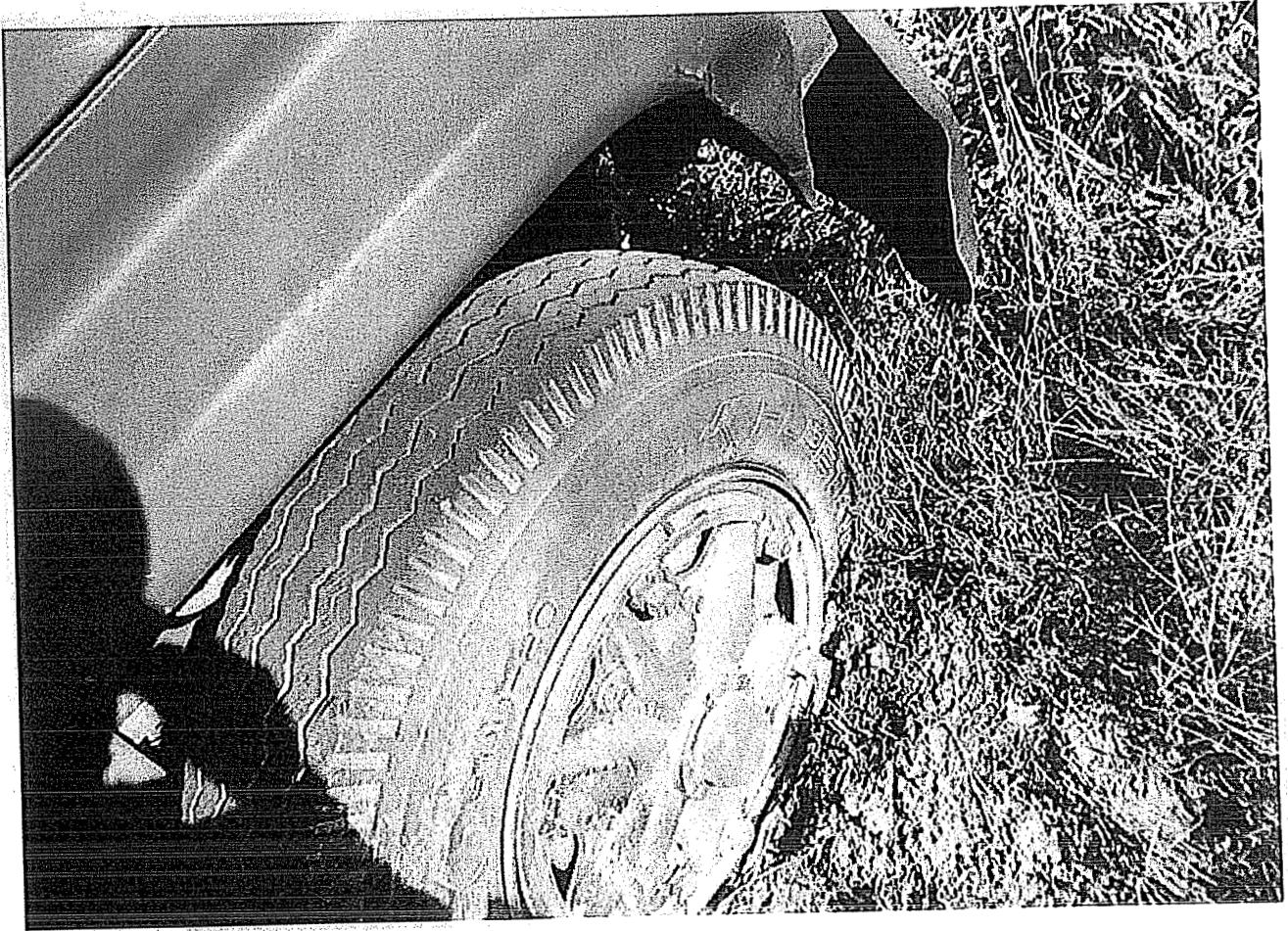


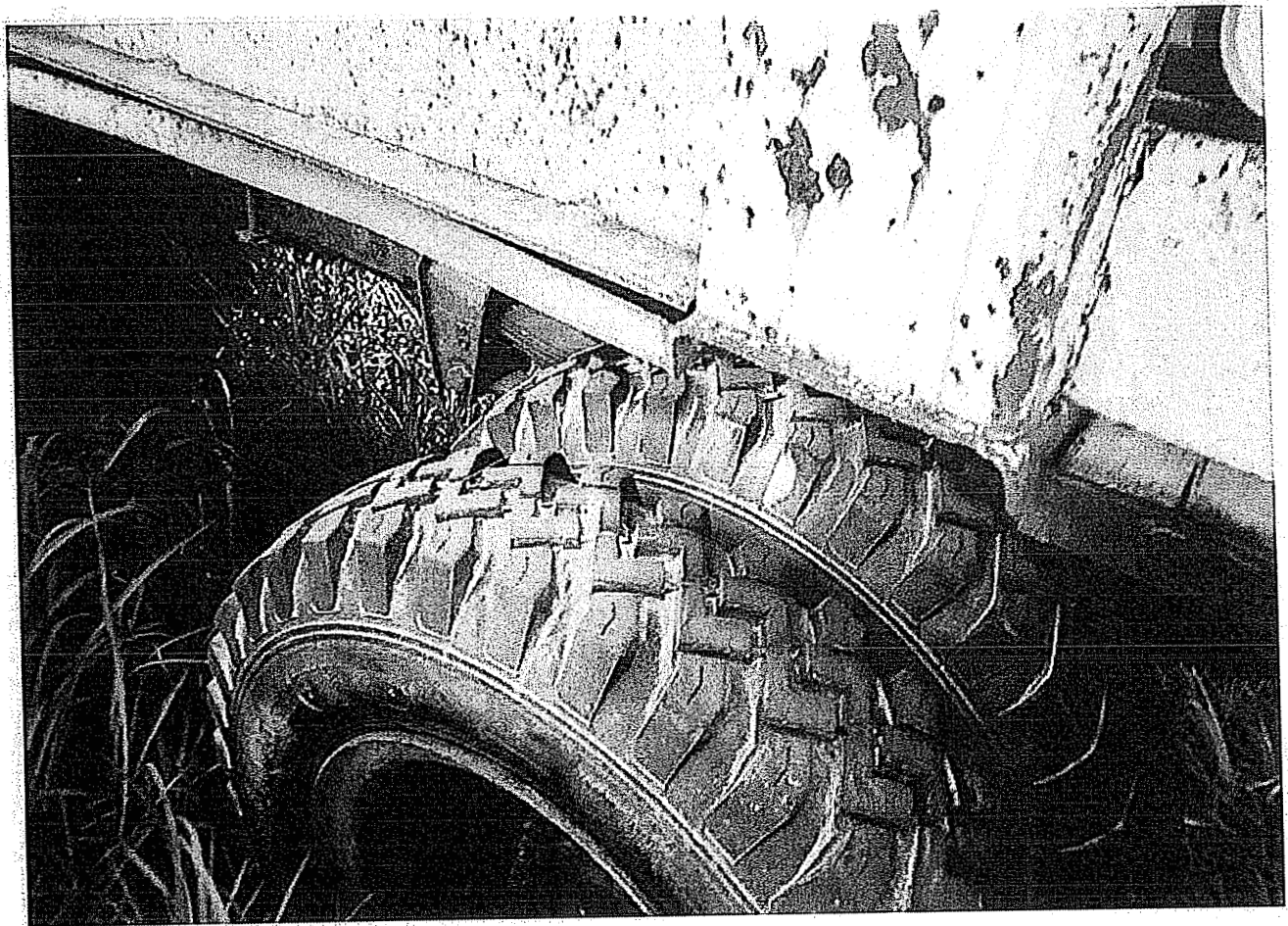
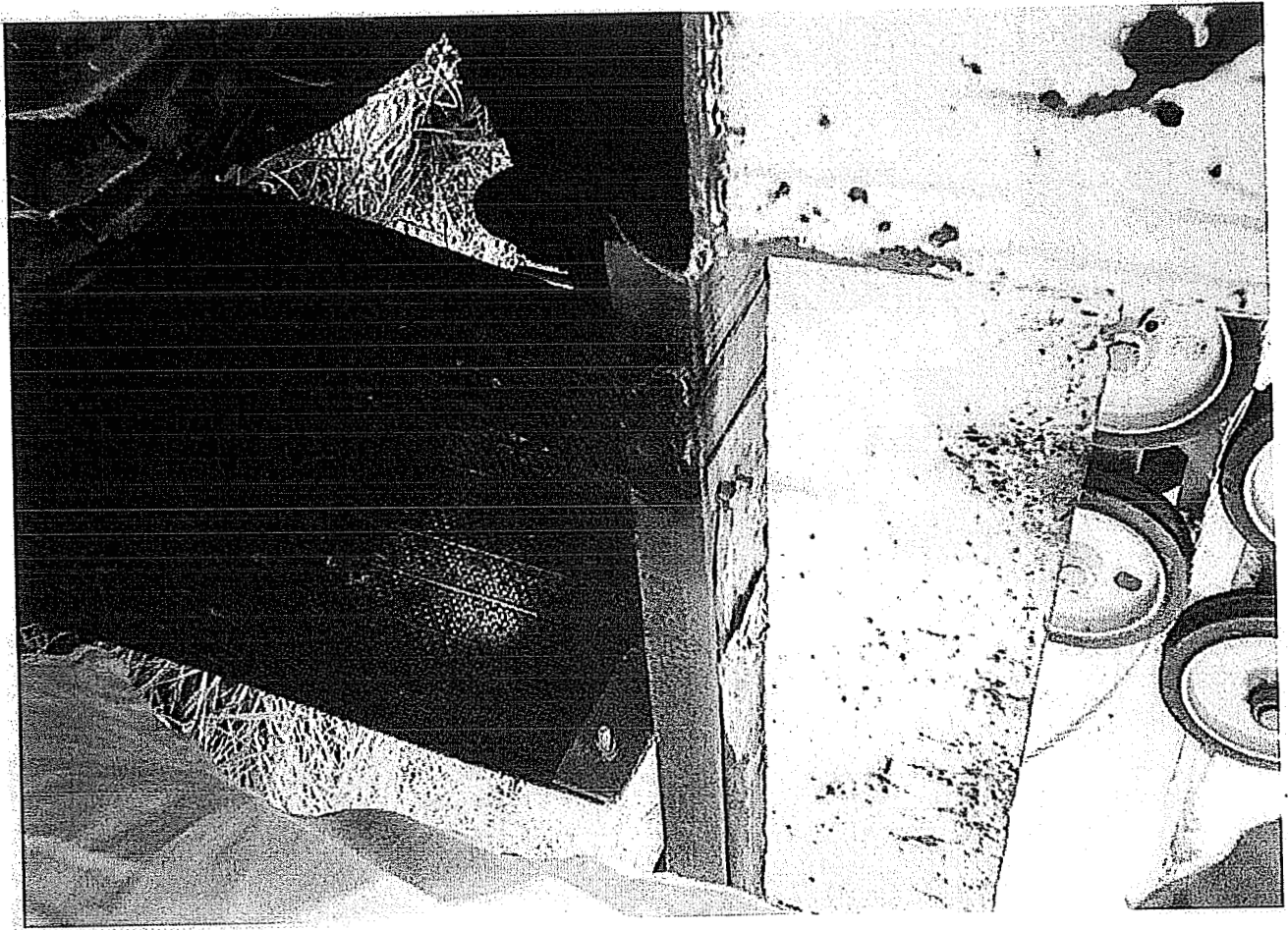




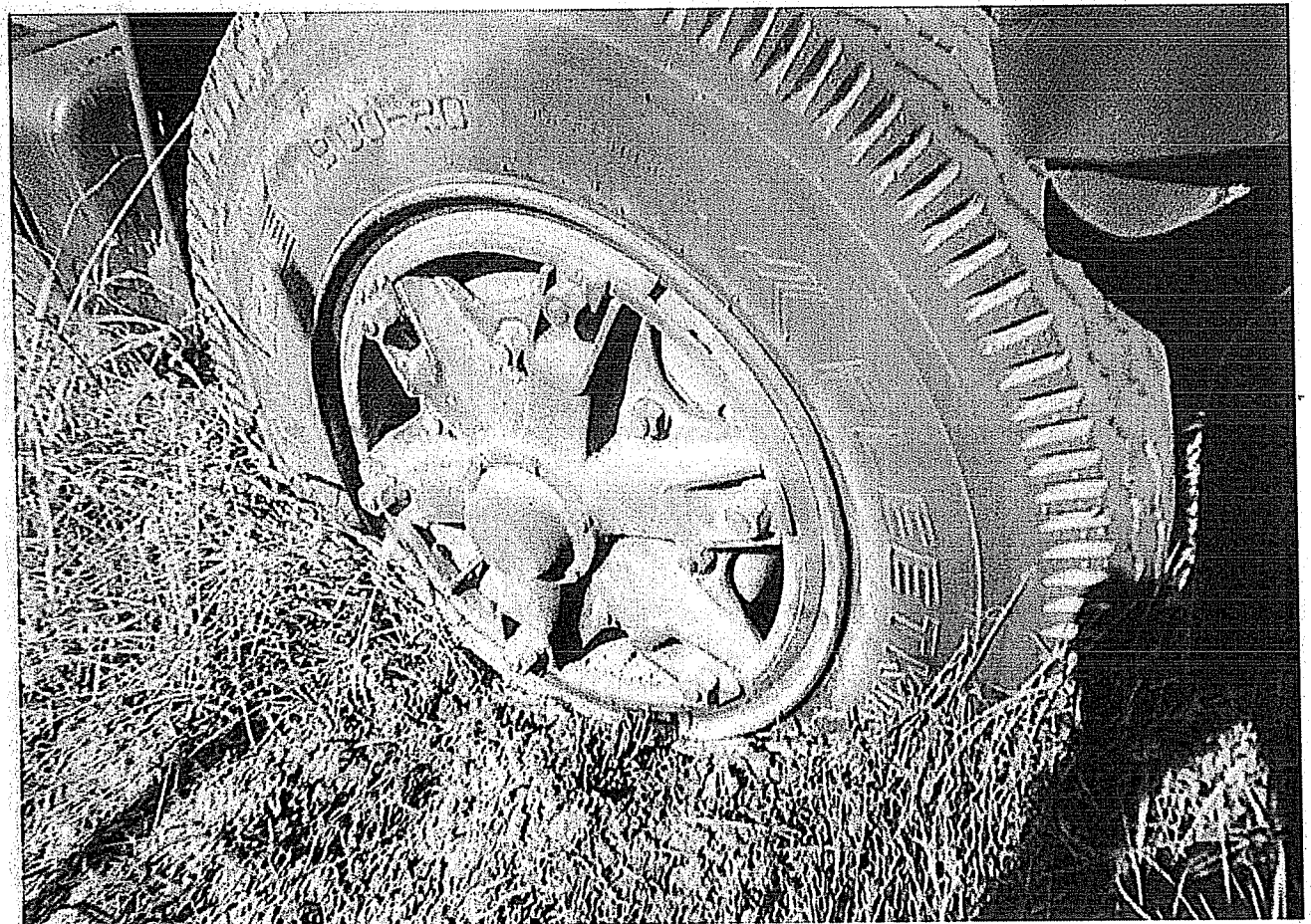


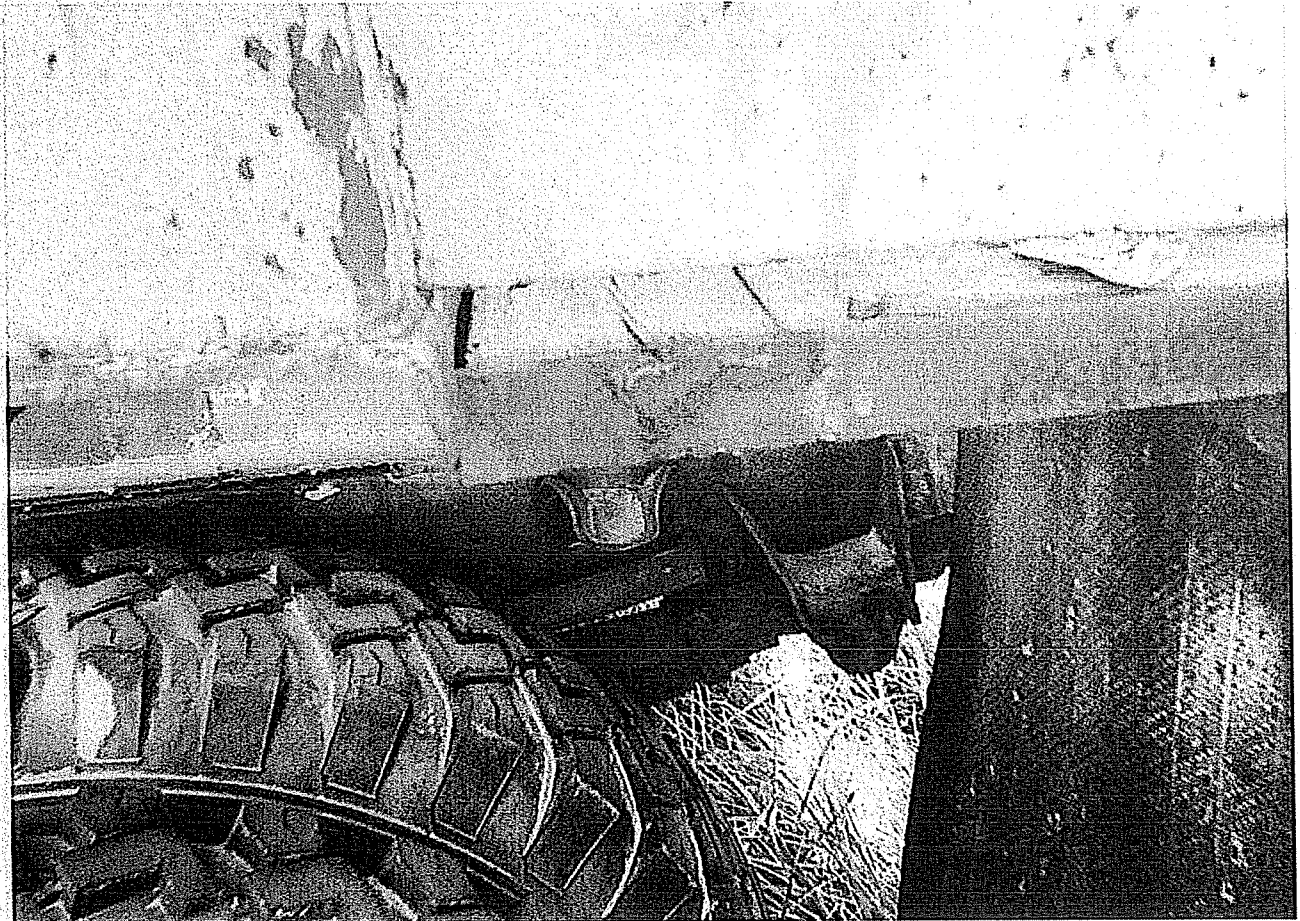


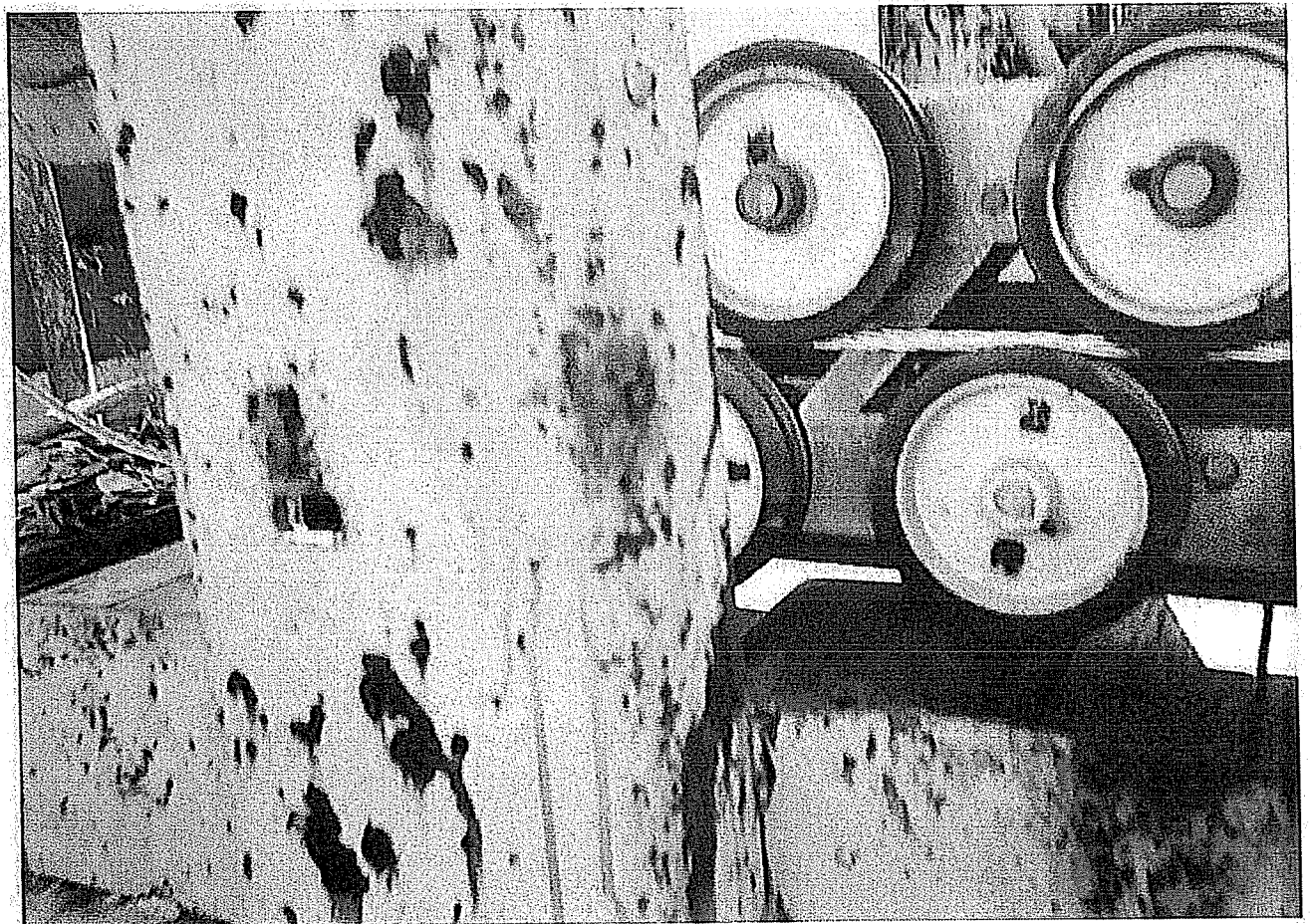
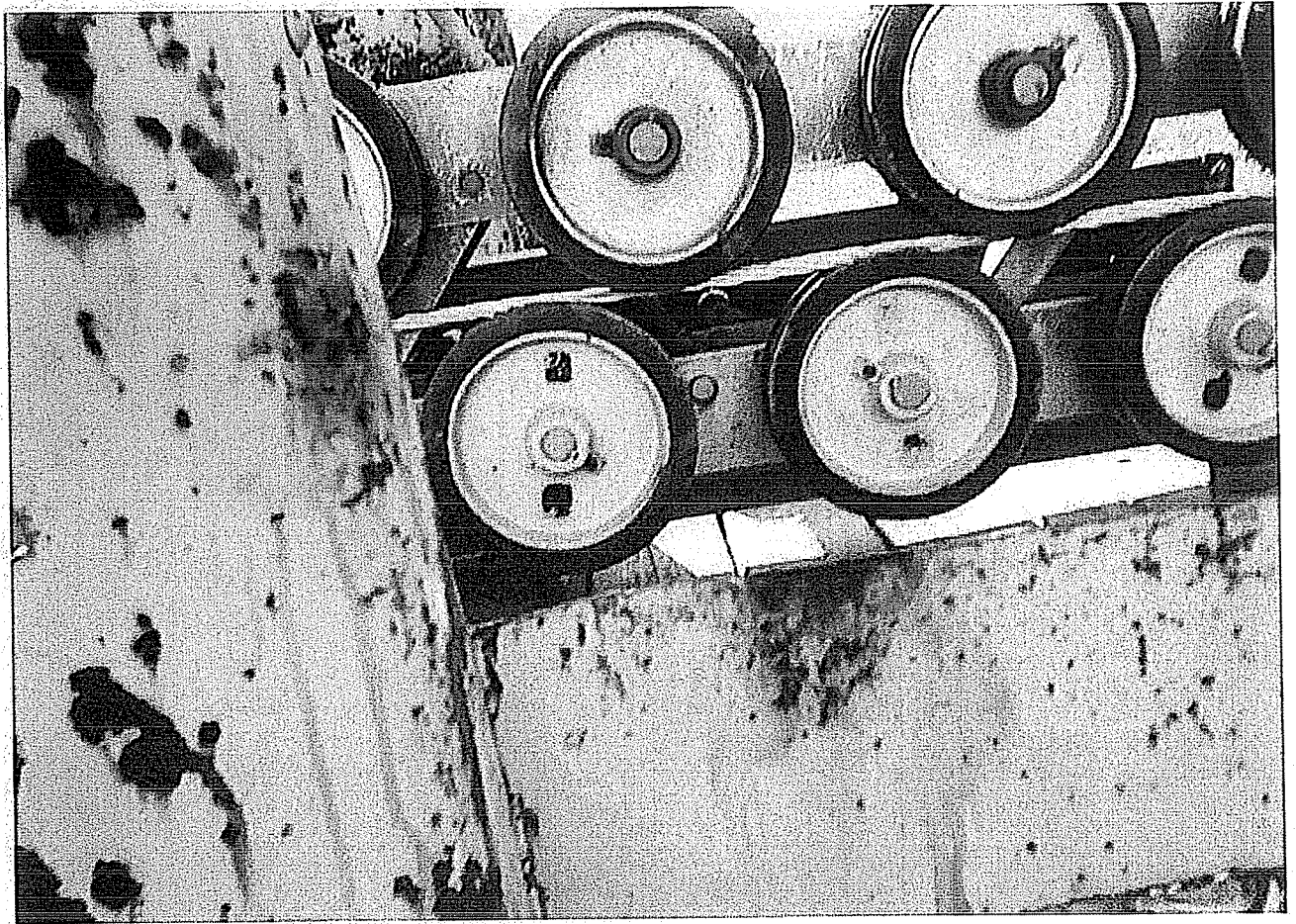


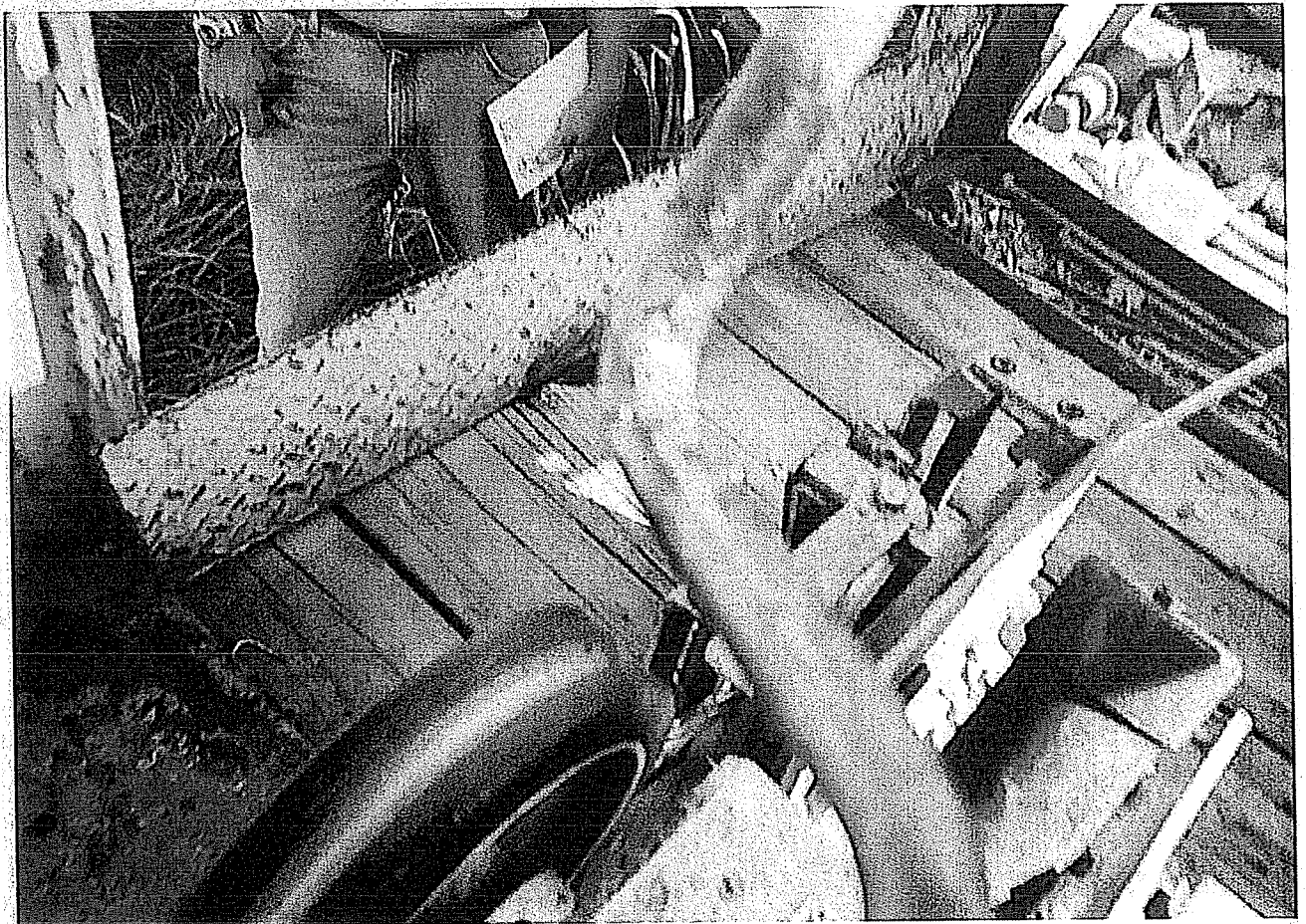
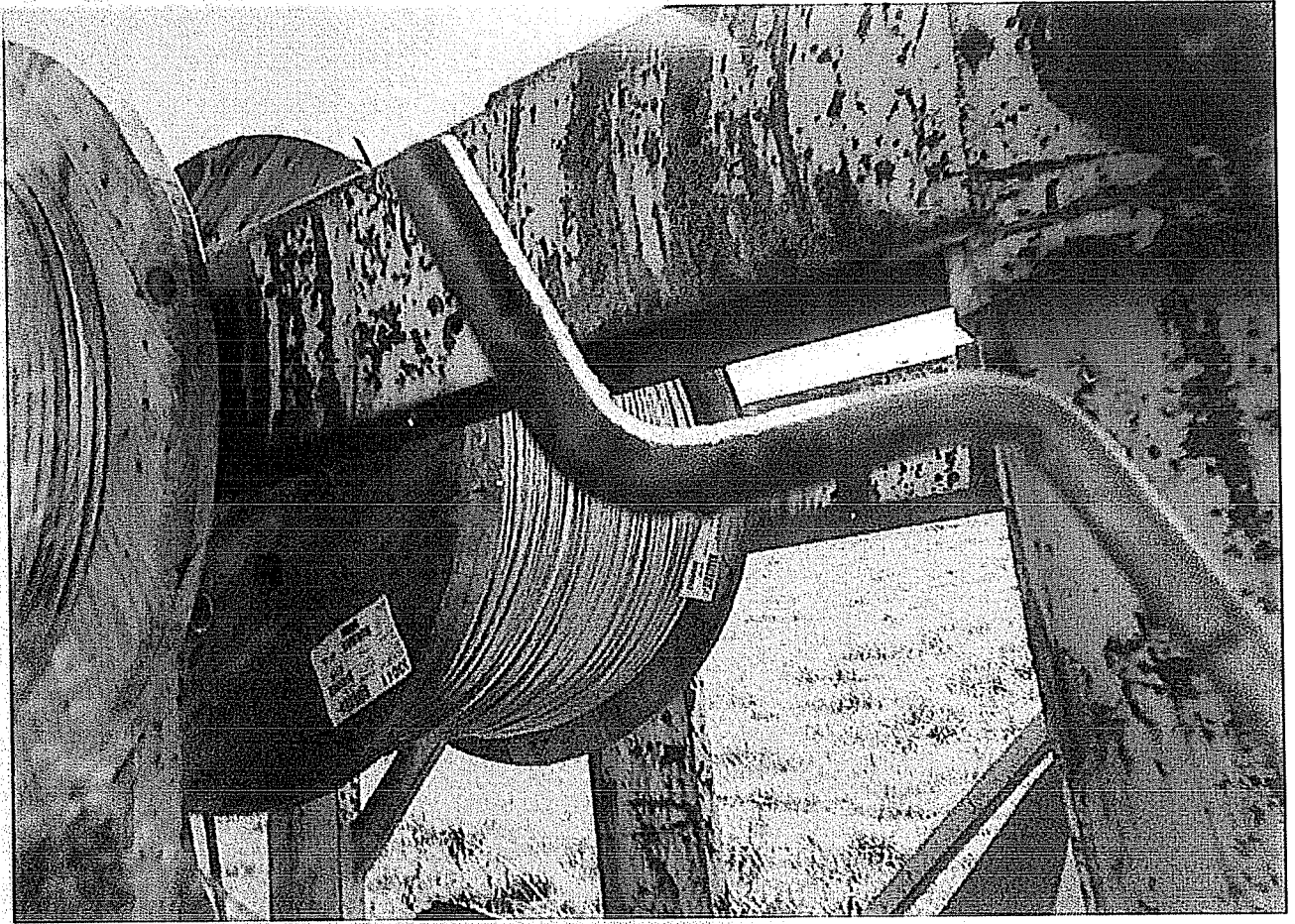








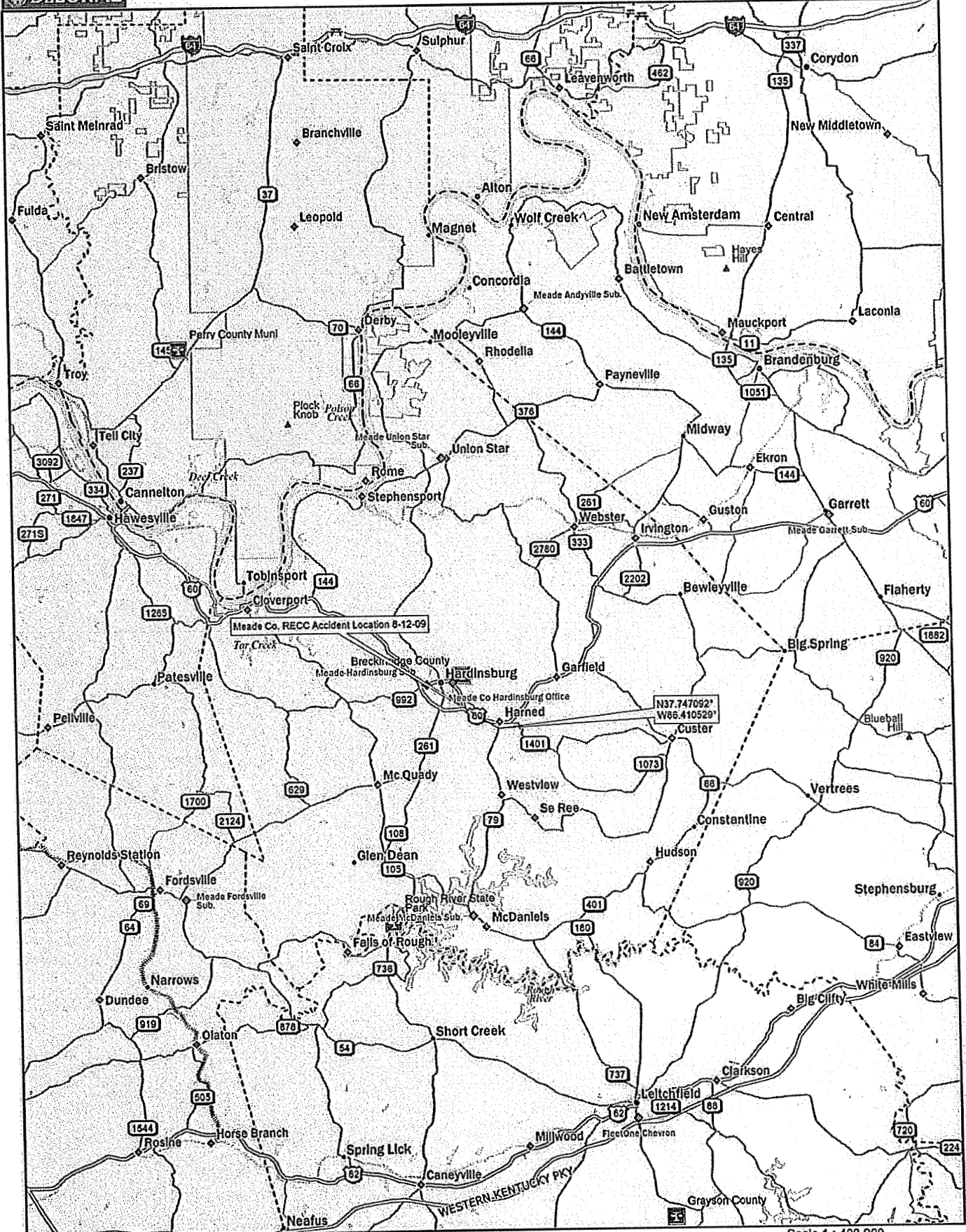




**Attachment B**

---

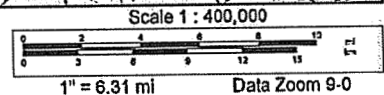
**KPSC Accident Location Maps**

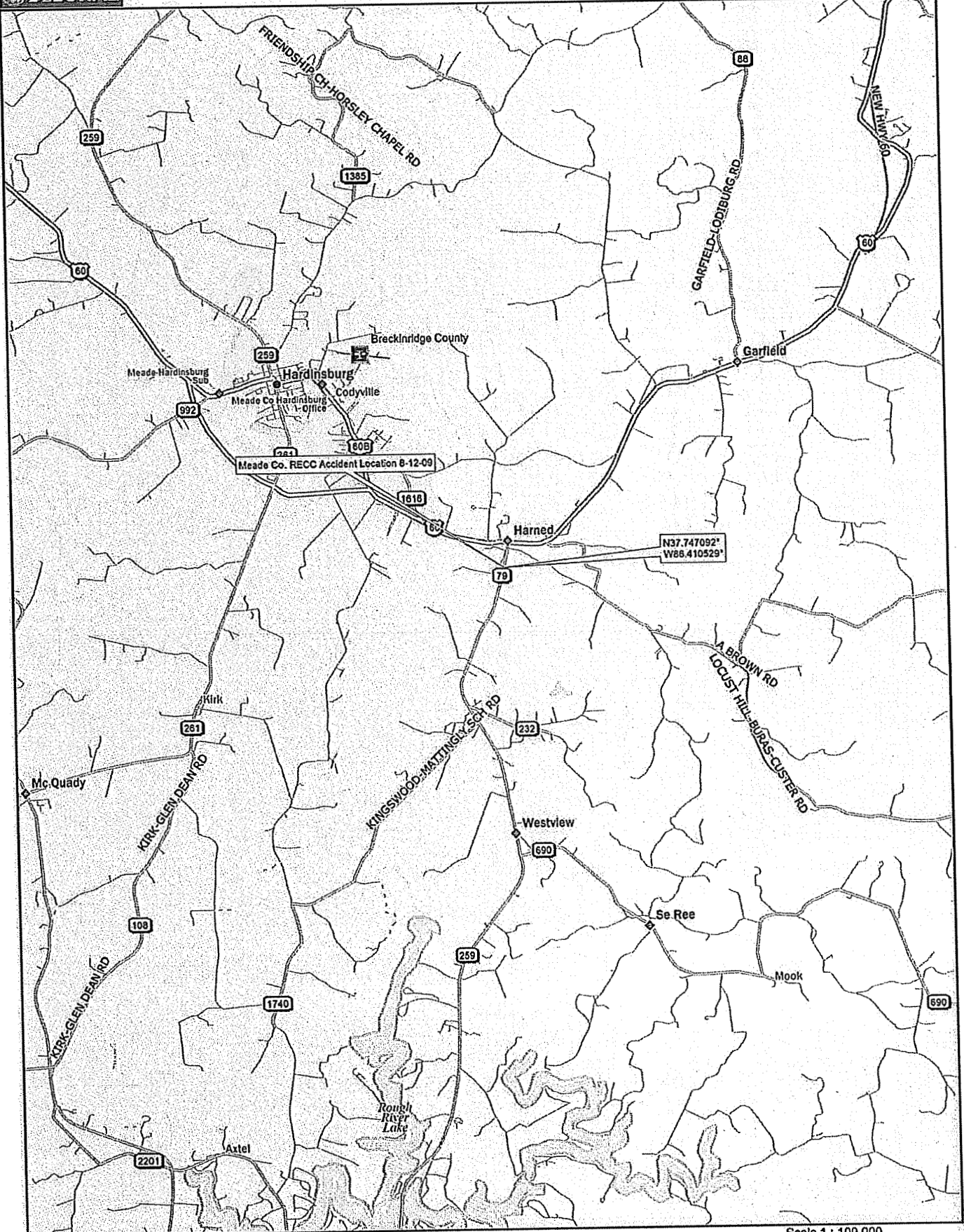


Data use subject to license.

© 2007 DeLorme. Street Atlas USA® 2008 Plus.

www.delorme.com

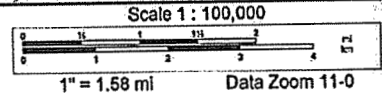




Data use subject to license.

© 2007 DeLorme. Street Atlas USA® 2008 Plus.

www.delorme.com

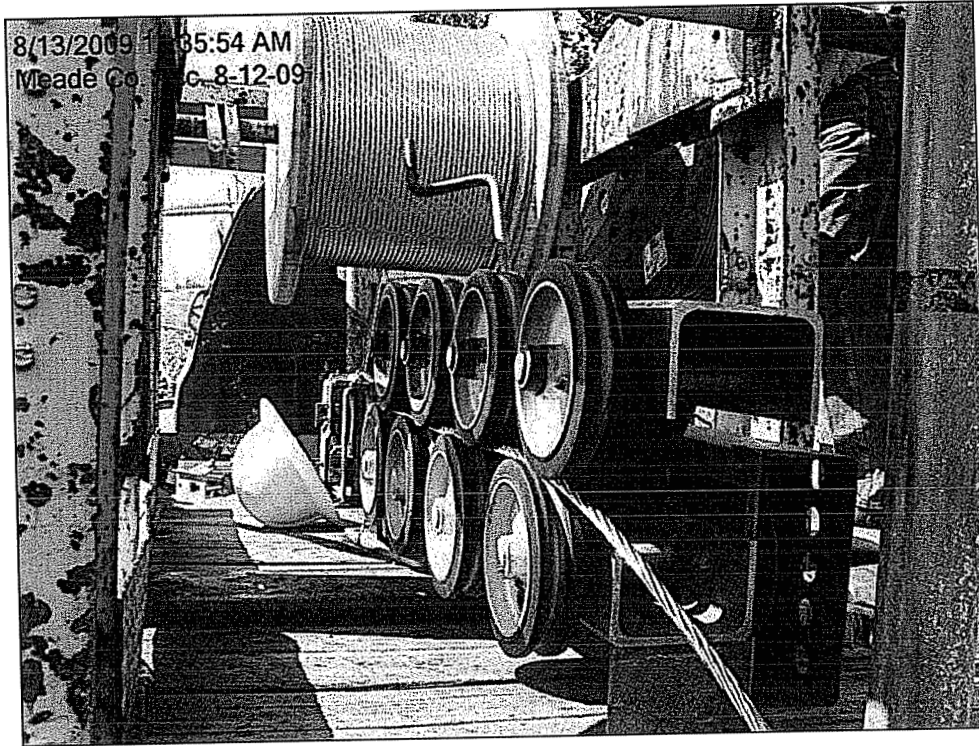


**Attachment C**

---

**KPSC Photographs of Accident Site**

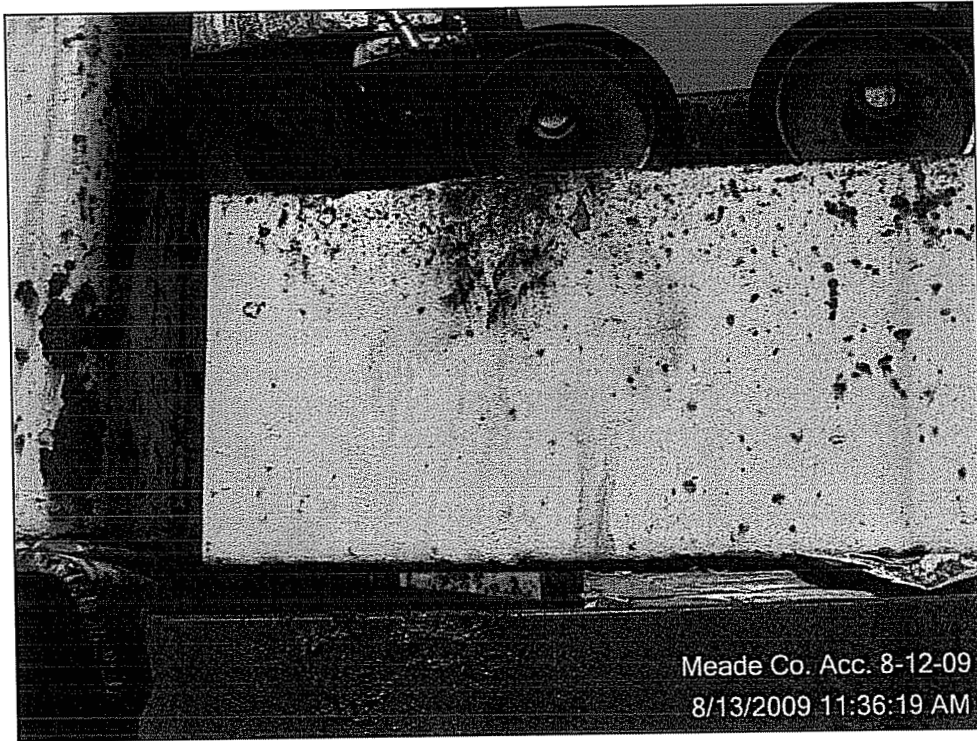




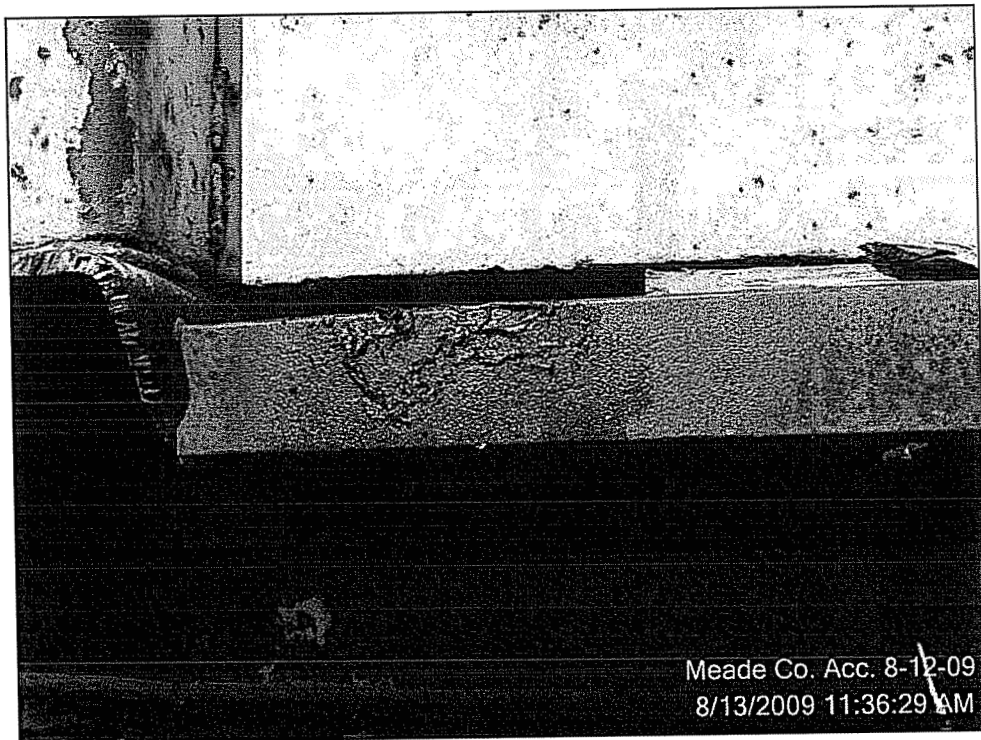
#1



#2



#3



#4



**#5**



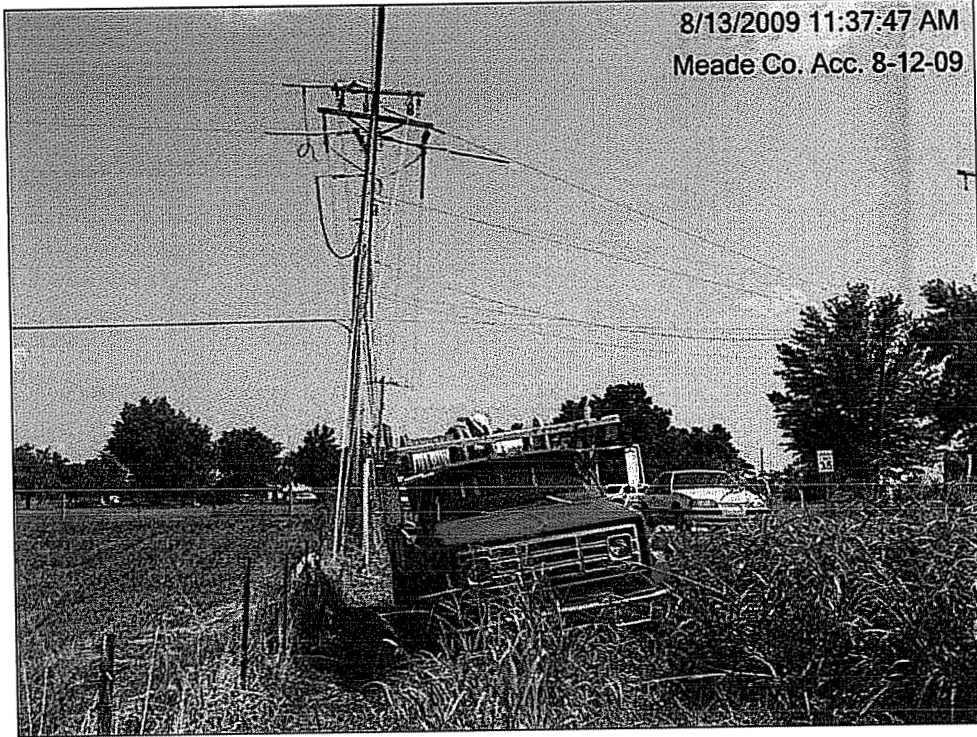
**#6**



#7



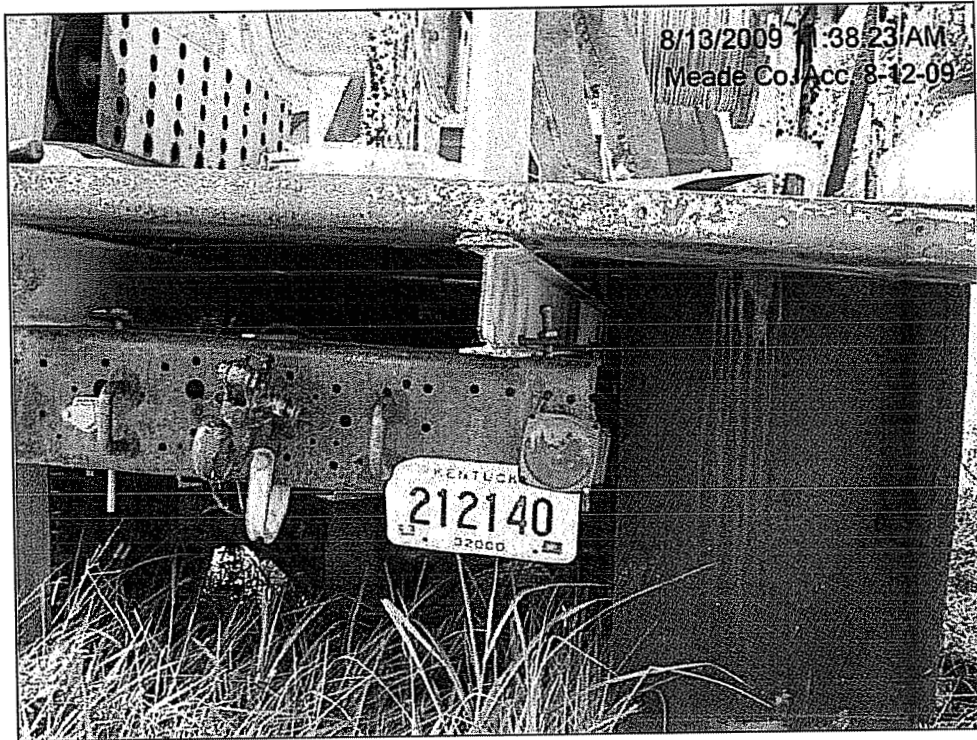
#8



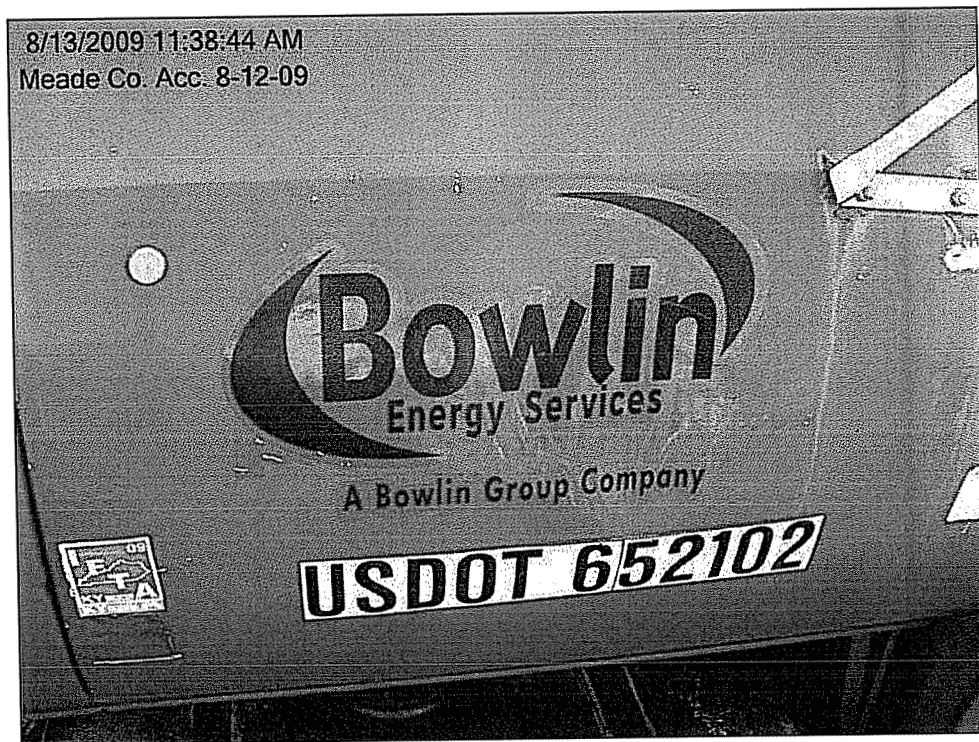
**#9**



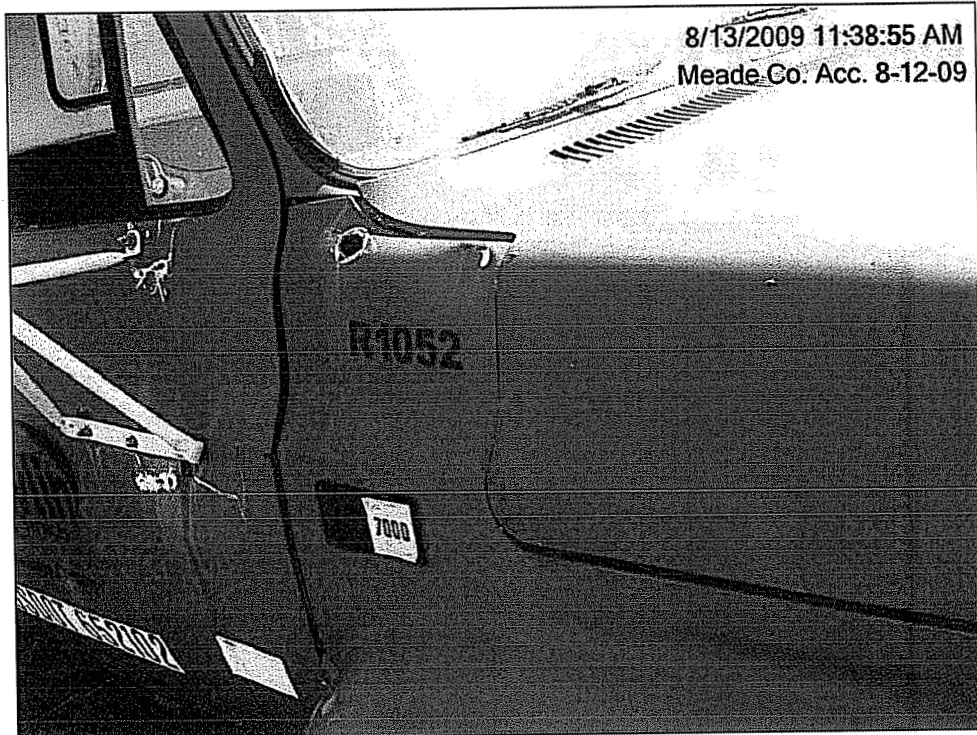
**#10**



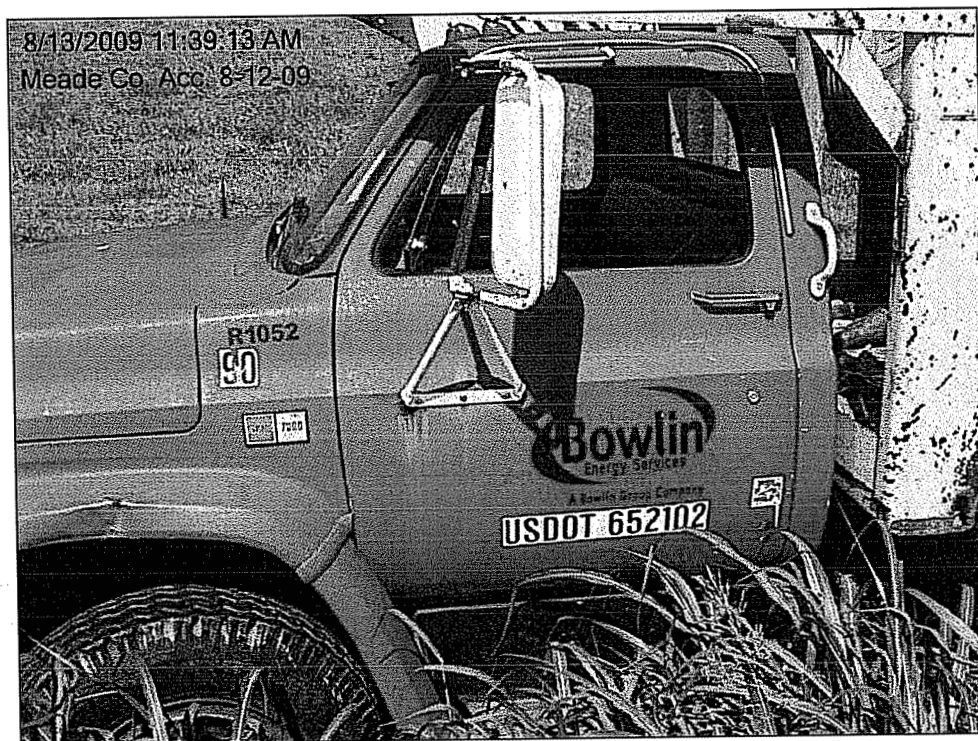
#11



#12



**#13**



**#14**

8/13/2009 11:39:32 AM  
Meade Co. Acc. 8-12-09



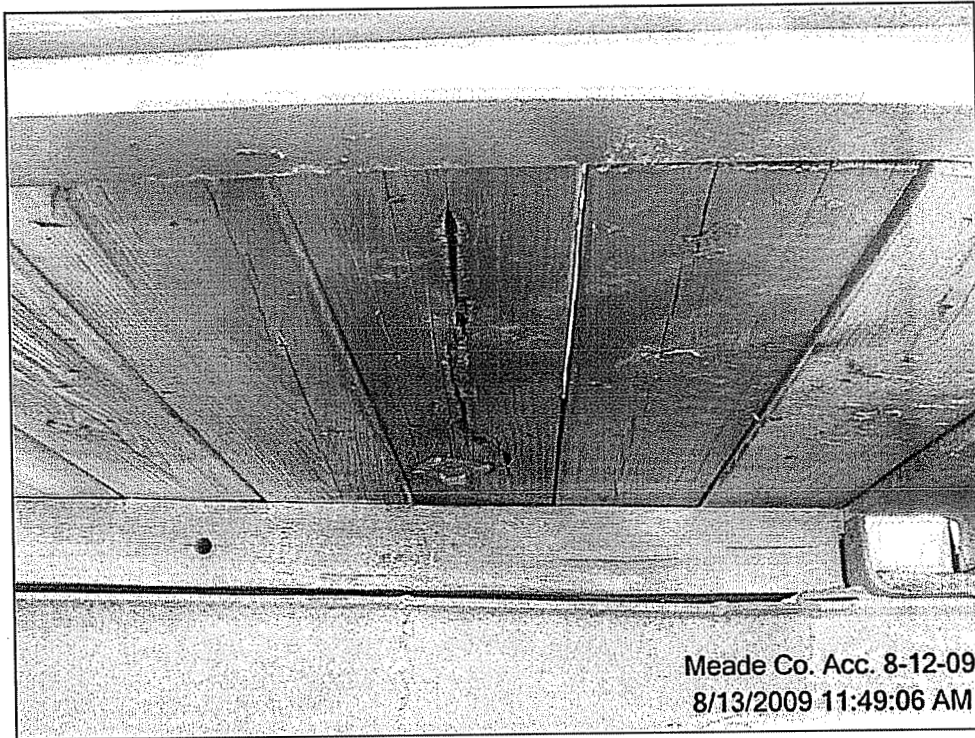
**#15**

8/13/2009 11:40:03 AM  
Meade Co. Acc. 8-12-09



**#16**

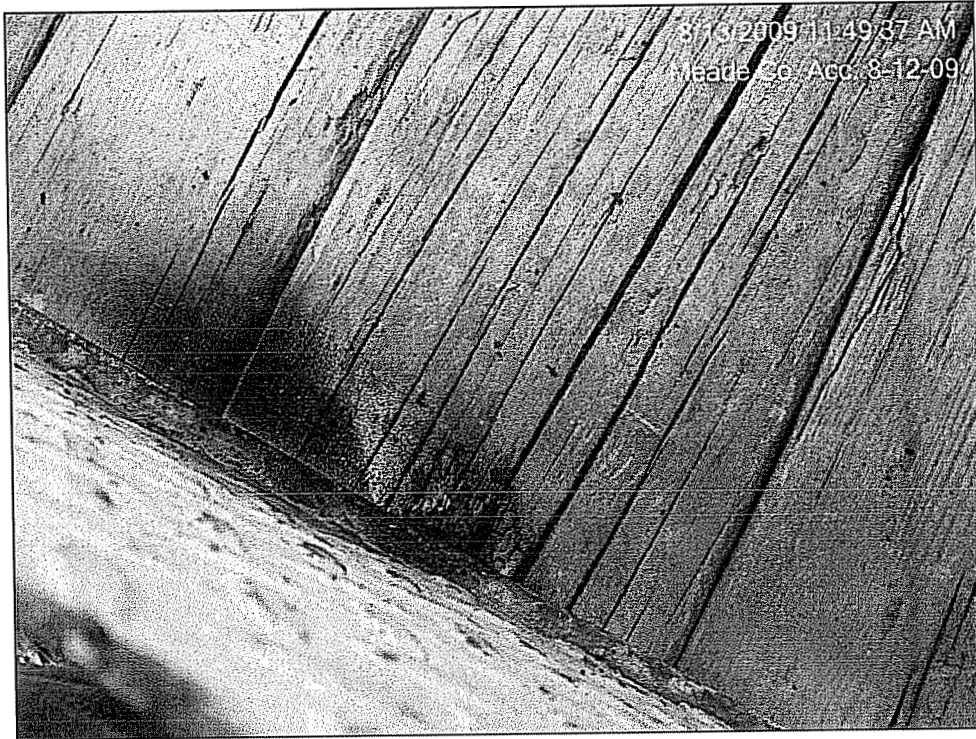




**#17**



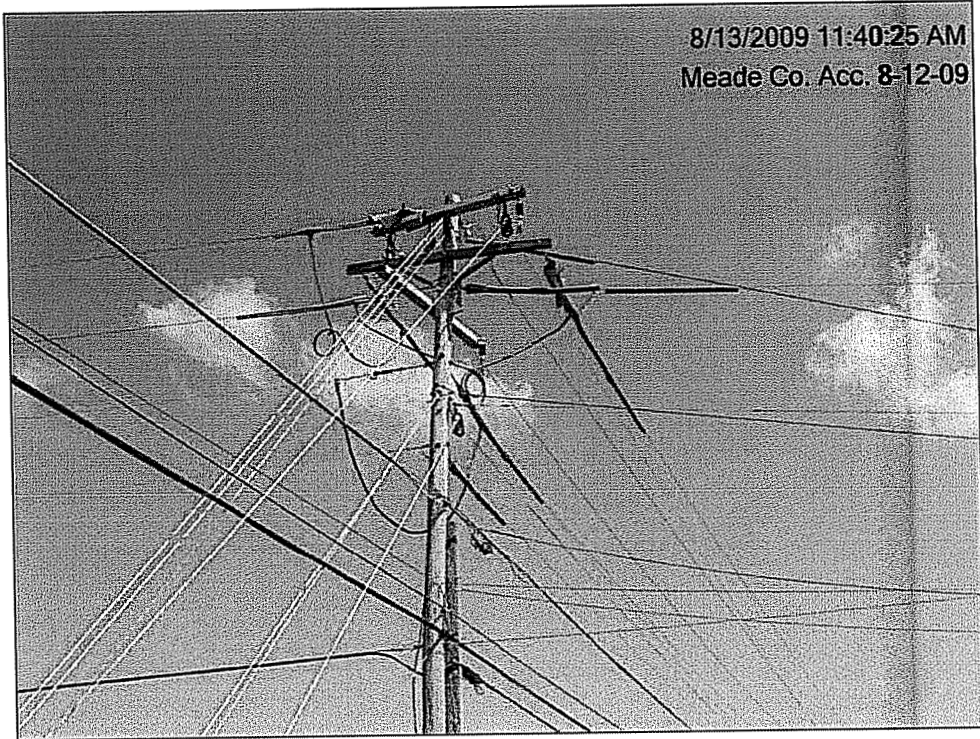
**#18**



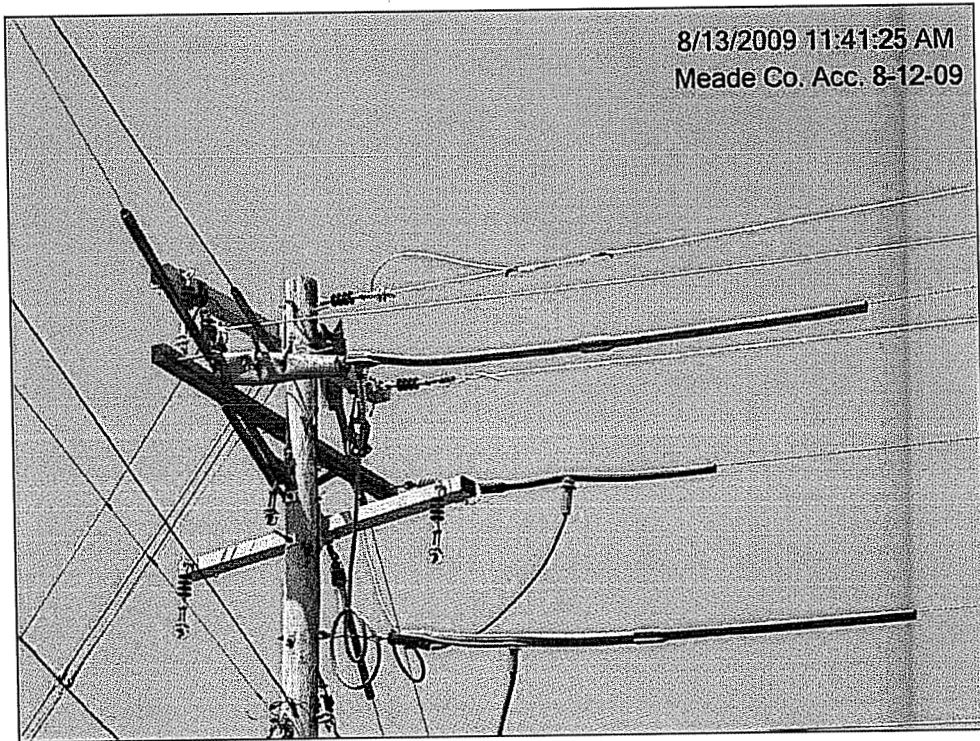
**#19**



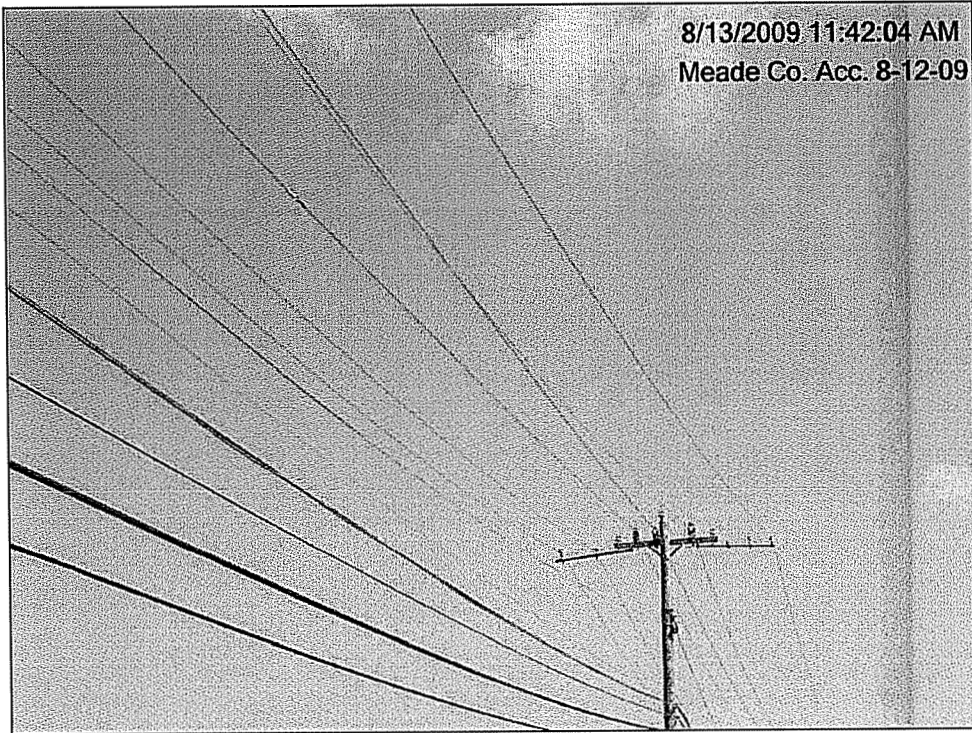
**#20**



**#21**



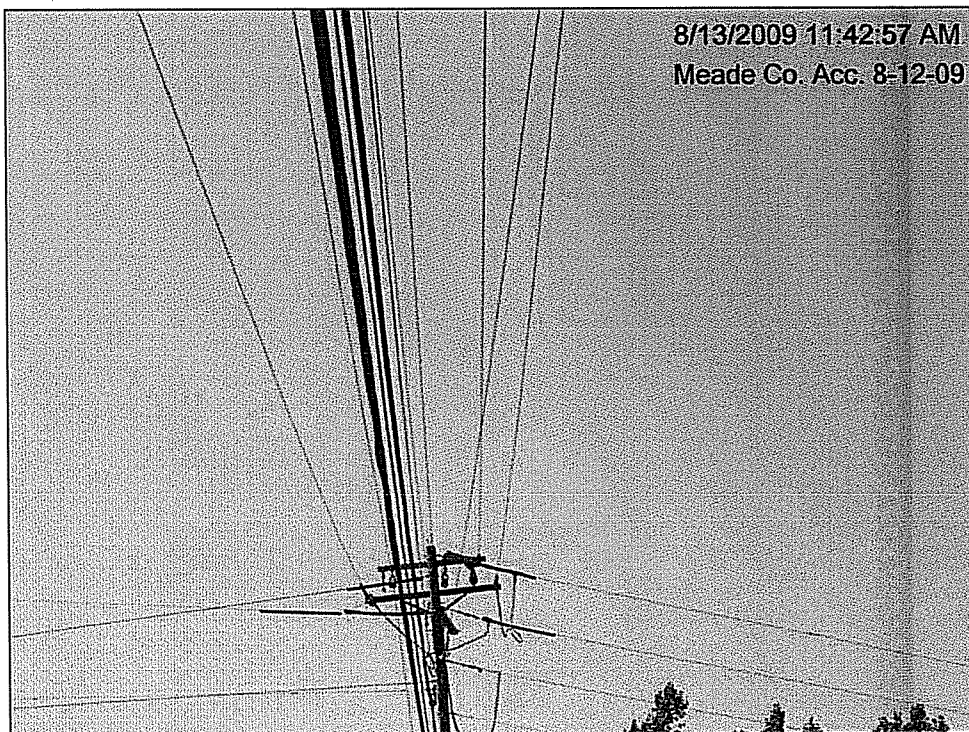
**#22**



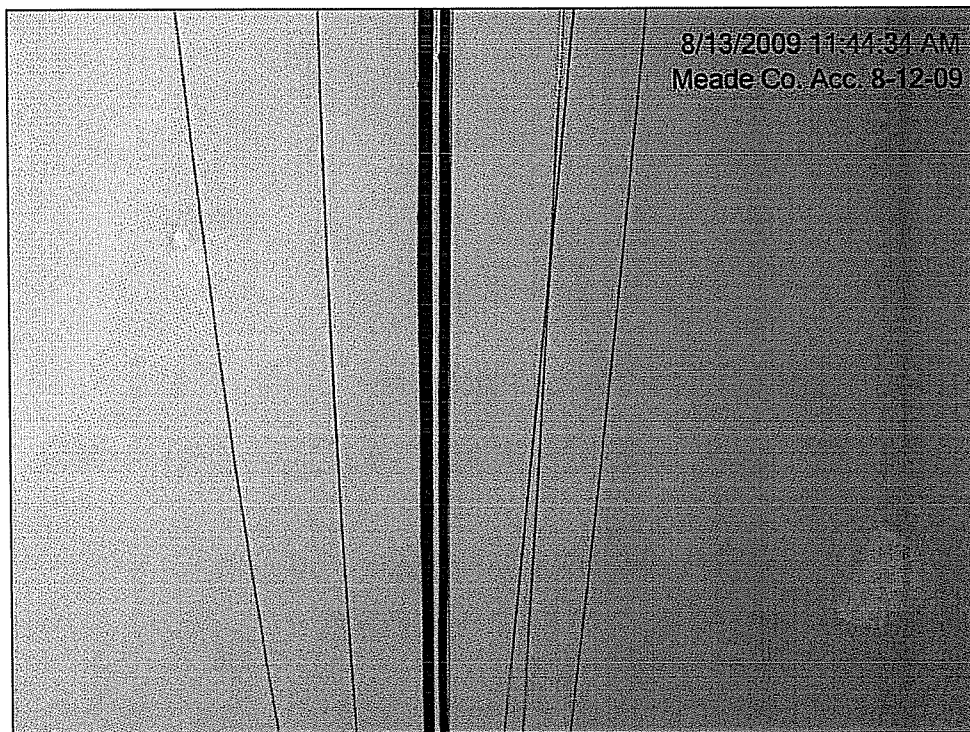
**#23**



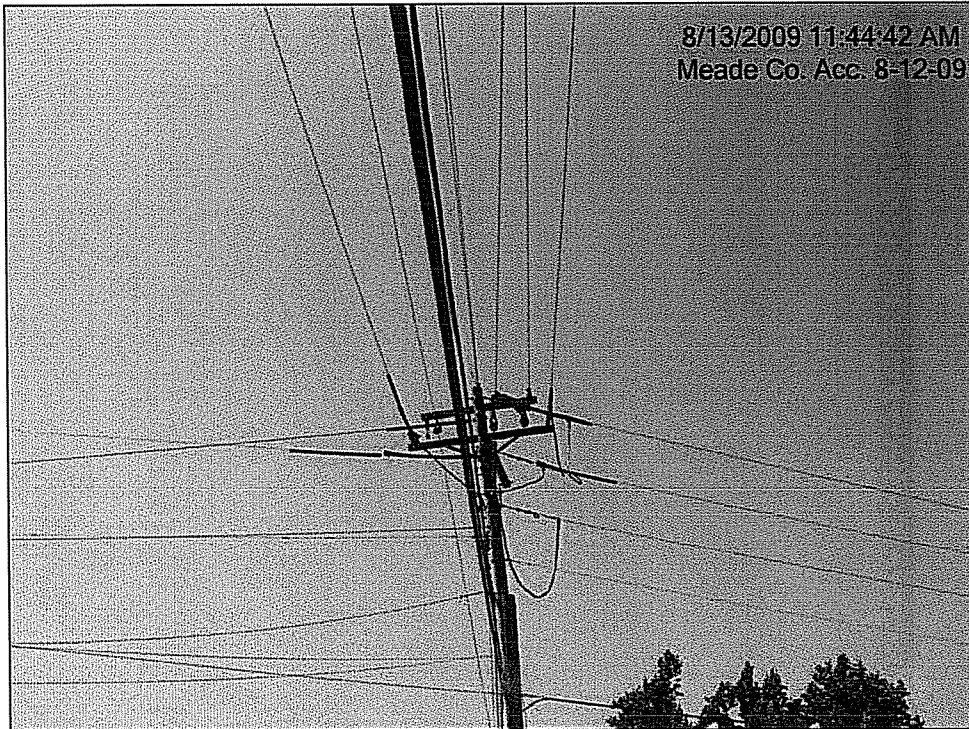
**#24**



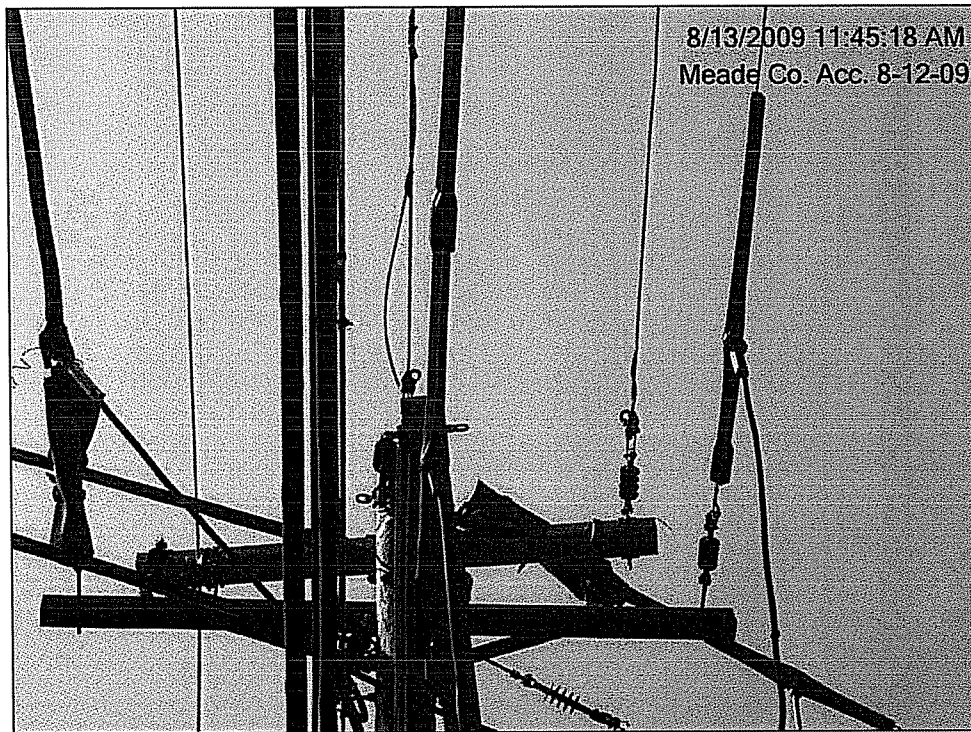
**#25**



**#26**



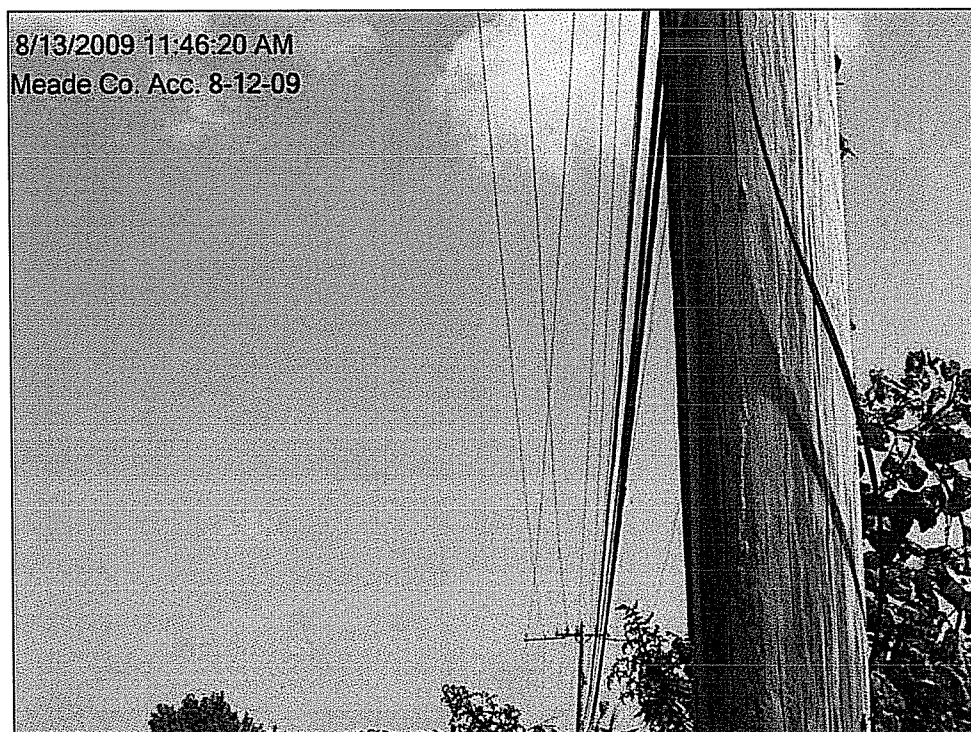
#27



#28



#29



#30

Burns E Mercer  
President & CEO  
Meade County R.E.C.C.  
P. O. Box 489  
Brandenburg, KY 40108-0489