



EAST KENTUCKY POWER COOPERATIVE

RECEIVED

JAN 15 2008

**PUBLIC SERVICE
COMMISSION**

January 15, 2008

HAND DELIVERED

Ms. Elizabeth O'Donnell
Executive Director
Public Service Commission
211 Sower Boulevard
Frankfort, KY 40602

Re: PSC Case No. 2007-00168

Dear Ms. O'Donnell:

Please find enclosed for filing with the Commission in the above-referenced case an original and ten copies of the East Kentucky Power Cooperative, Inc. progress report on the construction of the Cooper Station Unit 2 cooling tower, as directed by the Commission's order in this case dated November 21, 2007

Very truly yours,

A handwritten signature in cursive script that reads "Charles A. Lile".

Charles A. Lile
Corporate Counsel

Enclosures

Cc: Parties of Record

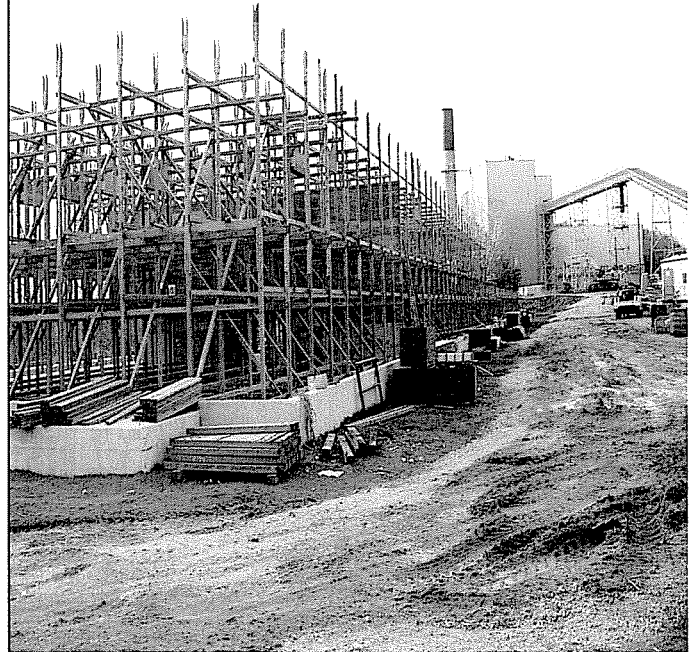


J.S. Cooper Station Low Water Mitigation Project

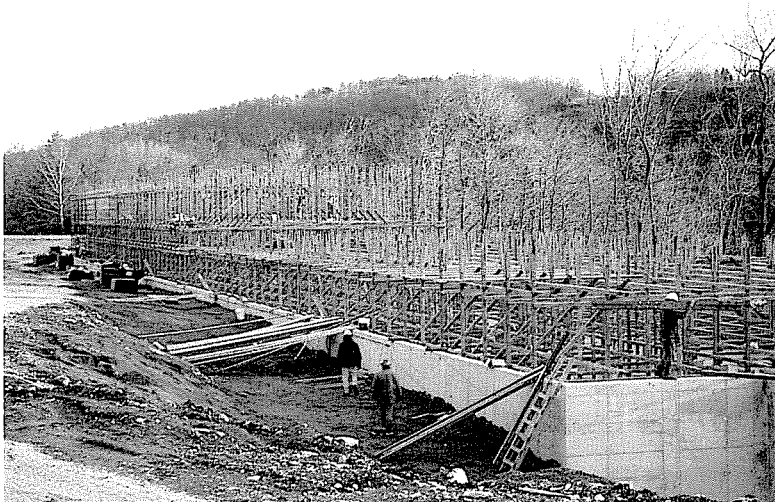
January 10th, 2008

Cooling Tower Progress Report

All cooling tower components, including gearboxes, are on site and the erection of the cooling tower structure is in progress. The temporary electrical service along the tower basin has been installed by EKPC personnel to supply power for Adams Construction. Adams has a fourteen man crew on site and the erection of the wooden structure is progressing as scheduled. Stanley engineer Hank Mann is back on site and Stanley Consultants have prepared the bid package for the electrical portion of the tower. The contract will be awarded by the end of January. Reynolds Inc. has finished the exploratory excavation of the circulating water lines and will have personnel on site Jan. 14th to begin excavation for the service building foundation and receive and stage the piping for the cooling tower. The concrete pipe will begin arriving on January 15th. Baker Concrete has completed the basin work and is currently off site. They will begin work on the foundation and floor of the service building by the end of the month. Hall construction has mounted the four additional pumps and motors for the pump barge. They have completed modifications to the existing header to accept the additional pump flow. The electrical work on the barge is in progress and will be complete by mid January.



- ❖ The cooling tower project is approximately 15% complete.
- ❖ Number of work days to completion: 79
- ❖ There are no construction delays at this time.
- ❖ Project completion date: May 1st 2008



**Lake Cumberland Level
681.19**

Recent low water mark was 678.61 on 10.22.07