

45.5	97,298	0	0.0000	100.0000	0.6806
46.5	92,884	0	0.0000	100.0000	0.6806
47.5	92,305	0	0.0000	100.0000	0.6806
48.5	91,924	2,428	2.6413	97.3587	0.6806
49.5	88,980	339	0.3810	99.6190	0.6626
50.5	49,847	0	0.0000	100.0000	0.6601
51.5	49,136	15,534	31.6143	68.3857	0.6601
52.5	33,510	241	0.7192	99.2808	0.4514
53.5	24,862	1,470	5.9126	94.0874	0.4482
54.5	23,392	5,704	24.3844	75.6156	0.4217
55.5	17,688	356	2.0127	97.9873	0.3188
56.5	17,332	0	0.0000	100.0000	0.3124
57.5	17,332	0	0.0000	100.0000	0.3124
58.5	17,180	352	2.0489	97.9511	0.3124
59.5	16,828	0	0.0000	100.0000	0.3060
60.5	14,691	0	0.0000	100.0000	0.3060
61.5	8,951	0	0.0000	100.0000	0.3060
62.5	1,616	0	0.0000	100.0000	0.3060
63.5	1,616	0	0.0000	100.0000	0.3060
64.5	0	0	0.0000	100.0000	0.3060
65.5	0	0	0.0000	100.0000	0.3060
66.5	0	0	0.0000	100.0000	0.3060
67.5	0	0	0.0000	100.0000	0.3060
68.5	0	0	0.0000	100.0000	0.3060
69.5	0	0	0.0000	100.0000	0.3060
70.5	0	0	0.0000	100.0000	0.3060
71.5	0	0	0.0000	100.0000	0.3060
72.5	0	0	0.0000	100.0000	0.3060
73.5	0	0	0.0000	100.0000	0.3060
74.5	0	0	0.0000	100.0000	0.3060
75.5	0	0	0.0000	100.0000	0.3060
76.5	0	0	0.0000	100.0000	0.3060
77.5	0	0	0.0000	100.0000	0.3060
78.5	0	0	0.0000	100.0000	0.3060
79.5	0	0	0.0000	100.0000	0.3060
80.5	0	0	0.0000	100.0000	0.3060
<b>BAND</b>		<b>1954 - 2004</b>			
0	6,440,295	0	0.0000	100.0000	1.0000
0.5	6,442,430	63	0.0010	99.9990	1.0000
1.5	6,216,896	110	0.0018	99.9982	1.0000
2.5	5,420,528	1,954	0.0360	99.9640	1.0000
3.5	5,417,873	2,277	0.0420	99.9580	0.9996
4.5	5,331,365	2,208	0.0414	99.9586	0.9992
5.5	5,311,726	2,007	0.0378	99.9622	0.9988
6.5	5,251,103	2,450	0.0467	99.9533	0.9984
7.5	5,045,568	2,847	0.0564	99.9436	0.9979
8.5	4,863,394	821	0.0169	99.9831	0.9974
9.5	4,749,343	6,431	0.1354	99.8646	0.9972
10.5	4,703,951	885	0.0188	99.9812	0.9959
11.5	4,339,446	271	0.0062	99.9938	0.9957
12.5	4,225,513	8,722	0.2064	99.7936	0.9956
13.5	4,175,322	9,144	0.2190	99.7810	0.9935

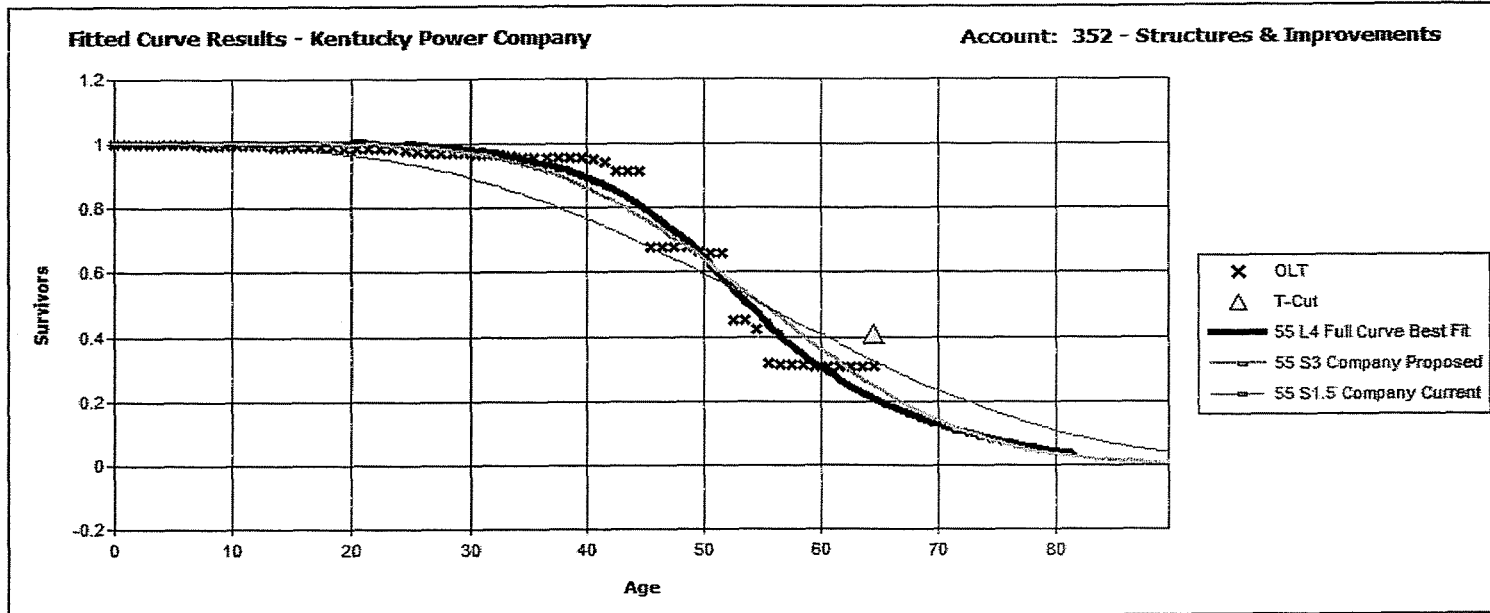
14.5	4,100,383	1,540	0.0376	99.9624	0.9914
15.5	4,098,290	1,452	0.0354	99.9646	0.9910
16.5	4,091,642	0	0.0000	100.0000	0.9906
17.5	4,077,219	734	0.0180	99.9820	0.9906
18.5	3,928,076	8,208	0.2090	99.7910	0.9905
19.5	3,823,374	9,156	0.2395	99.7605	0.9884
20.5	3,698,639	880	0.0238	99.9762	0.9860
21.5	3,645,433	318	0.0087	99.9913	0.9858
22.5	3,494,110	704	0.0201	99.9799	0.9857
23.5	1,895,339	11,644	0.6143	99.3857	0.9855
24.5	1,796,768	7,708	0.4290	99.5710	0.9795
25.5	1,785,920	2,500	0.1400	99.8600	0.9753
26.5	1,784,765	5,102	0.2859	99.7141	0.9739
27.5	1,629,507	359	0.0220	99.9780	0.9711
28.5	1,541,609	1,237	0.0802	99.9198	0.9709
29.5	1,526,049	3,030	0.1986	99.8014	0.9701
30.5	374,614	37	0.0099	99.9901	0.9682
31.5	325,481	25	0.0077	99.9923	0.9681
32.5	325,456	1,985	0.6099	99.3901	0.9680
33.5	312,366	852	0.2728	99.7272	0.9621
34.5	260,894	0	0.0000	100.0000	0.9595
35.5	259,642	325	0.1252	99.8748	0.9595
36.5	227,268	200	0.0880	99.9120	0.9583
37.5	205,479	0	0.0000	100.0000	0.9574
38.5	175,555	0	0.0000	100.0000	0.9574
39.5	175,258	960	0.5478	99.4522	0.9574
40.5	165,852	1,228	0.7404	99.2596	0.9522
41.5	148,035	4,980	3.3641	96.6359	0.9452
42.5	136,083	0	0.0000	100.0000	0.9134
43.5	135,962	44	0.0324	99.9676	0.9134
44.5	133,001	33,904	25.4915	74.5085	0.9131
45.5	97,298	0	0.0000	100.0000	0.6803
46.5	92,884	0	0.0000	100.0000	0.6803
47.5	92,305	0	0.0000	100.0000	0.6803
48.5	91,924	2,428	2.6413	97.3587	0.6803
49.5	88,980	339	0.3810	99.6190	0.6623
50.5	49,847	0	0.0000	100.0000	0.6598
51.5	49,136	15,534	31.6143	68.3857	0.6598
52.5	33,510	241	0.7192	99.2808	0.4512
53.5	24,862	1,470	5.9126	94.0874	0.4480
54.5	23,392	5,704	24.3844	75.6156	0.4215
55.5	17,688	356	2.0127	97.9873	0.3187
56.5	17,332	0	0.0000	100.0000	0.3123
57.5	17,332	0	0.0000	100.0000	0.3123
58.5	17,180	352	2.0489	97.9511	0.3123
59.5	16,828	0	0.0000	100.0000	0.3059
60.5	14,691	0	0.0000	100.0000	0.3059
61.5	8,951	0	0.0000	100.0000	0.3059
62.5	1,616	0	0.0000	100.0000	0.3059
63.5	1,616	0	0.0000	100.0000	0.3059
64.5	0	0	0.0000	100.0000	0.3059

**Best Fit Curve Results**  
**Kentucky Power Company**  
**Account: 352 - Structures & Improvements**

Curve	Life	Sum of Squared Differences
<b>BAND</b>	<b>1954 - 2004</b>	
L4	55.0	1,342.644
S4	54.0	1,788.077
S3	54.0	2,047.828
R4	53.0	2,177.901
L5	54.0	2,307.438
L3	57.0	2,788.629
R3	53.0	3,162.238
R5	53.0	3,949.735
S2	55.0	4,026.436
S5	54.0	4,458.587
R2.5	53.0	4,673.741
S1.5	56.0	5,561.737
L2	61.0	6,267.890
R2	54.0	6,810.722
S1	57.0	7,456.733
L1.5	62.0	8,579.040
S6	53.0	9,275.168
R1.5	55.0	9,435.557
S0.5	58.0	9,594.156
L1	65.0	11,271.285
S0	60.0	12,023.970
R1	57.0	12,501.324
L0.5	69.0	13,479.413
S-0.5	64.0	15,259.618
L0	74.0	15,888.442
R0.5	61.0	15,918.242
O2	79.0	18,725.375
O1	70.0	18,727.805
SQ	52.0	23,071.623
O3	79.0	26,835.524
O4	79.0	44,769.408

**Analytical Parameters**

OLT Placement Band: 1923 - 2004  
 OLT Experience Band: 1954 - 2004  
 Minimum Life Parameter: 4  
 Maximum Life Parameter: 79  
 Life Increment Parameter: 1  
 Max Age (T-Cut): 64.5



**Analytical Parameters**

OLT Placement Band:	1923 - 2004
OLT Experience Band:	1954 - 2004
Minimum Life Parameter:	4
Maximum Life Parameter:	79
Life Increment Parameter:	1
Max Age (T-Cut):	64.5

**SPR Results**  
**Kentucky Power Company**  
**Account: 352 - Structures & Improvements**

Curve	Life	Sum of Squared Differences	Index of Variation
<b>BAND: 1954 - 2004</b>			
R4	79	2.55E+11	11
L4	79	2.56E+11	11
R5	69	2.70E+11	11
S4	73	2.74E+11	11
L5	70	3.02E+11	12
S5	65	3.52E+11	13
S6	59	4.11E+11	14
S3	79	4.86E+11	15
SQ	52	5.03E+11	15
L3	79	2.00E+12	31
R3	79	2.40E+12	33
S2	79	3.25E+12	39
R2.5	79	5.83E+12	52
S1.5	79	6.87E+12	57
R2	79	1.10E+13	72
L2	79	1.15E+13	73
S1	79	1.22E+13	75
R1.5	79	1.95E+13	96
S0.5	79	2.01E+13	97
L1.5	79	2.12E+13	100
S0	79	3.05E+13	119
R1	79	3.08E+13	120
L1	79	3.45E+13	127
S-0.5	79	4.73E+13	149
R0.5	79	4.78E+13	149
L0.5	79	4.93E+13	152
L0	79	6.76E+13	178
O1	79	6.87E+13	179
O2	79	8.84E+13	203
O3	79	1.72E+14	284
O4	79	2.80E+14	362

Minimum Equipment Life Expectancy: 4  
 Maximum Equipment Life Expectancy: 79  
 Life Expectancy Increment: 1  
 Begin Year: 1954  
 End Year: 2004  
 Year Fit Increment: 0

**Plant Balances**

Year	Balance	Year	Balance	Year	Balance	Year	Balance
2004	6,387,065	2003	6,387,065	2002	6,387,065	2001	6,387,417
2000	6,388,269	1999	6,388,269	1998	6,388,642	1997	6,394,832
1996	6,406,115	1995	6,406,115	1994	6,408,704	1993	6,409,226
1992	6,417,964	1991	6,418,946	1990	6,423,785	1989	6,425,033
1988	6,425,033	1987	6,429,762	1986	6,432,774	1985	6,437,639
1984	6,442,316	1983	6,442,316	1982	6,445,294	1981	6,446,838
1980	6,484,086	1979	6,487,090	1978	6,487,331	1977	6,487,331
1976	6,487,331	1975	6,497,325	1974	6,531,417	1973	6,532,758
1972	6,536,389	1971	6,536,389	1970	6,536,389	1969	6,537,068
1968	6,538,203	1967	6,538,203	1966	6,541,430	1965	6,541,430
1964	6,546,680	1963	6,547,731	1962	6,549,110	1961	6,549,441
1960	6,549,829	1959	6,549,829	1958	6,551,477	1957	6,552,115
1956	6,552,115	1955	6,552,115	1954	6,552,436		

**Simulated Balances**

**Curve: R4 ASL: 79 SSD: 2.55E+11 IV: 11**

Year	Balance	Year	Balance	Year	Balance	Year	Balance
2004	6,130,986	2003	6,167,326	2002	6,200,926	2001	6,232,214
2000	6,261,289	1999	6,288,094	1998	6,312,761	1997	6,335,572
1996	6,356,628	1995	6,375,824	1994	6,393,426	1993	6,409,585
1992	6,424,402	1991	6,437,745	1990	6,449,942	1989	6,461,055
1988	6,471,133	1987	6,480,177	1986	6,488,376	1985	6,495,794
1984	6,502,445	1983	6,508,379	1982	6,513,724	1981	6,518,527
1980	6,522,769	1979	6,526,547	1978	6,529,918	1977	6,532,920
1976	6,535,542	1975	6,537,864	1974	6,539,920	1973	6,541,729
1972	6,543,296	1971	6,544,675	1970	6,545,883	1969	6,546,932
1968	6,547,837	1967	6,548,624	1966	6,549,305	1965	6,549,889
1964	6,550,389	1963	6,550,822	1962	6,551,192	1961	6,551,501
1960	6,551,767	1959	6,551,992	1958	6,552,180	1957	6,552,340
1956	6,552,473	1955	6,552,587	1954	6,552,680		

**Curve: L4 ASL: 79 SSD: 2.56E+11 IV: 11**

Year	Balance	Year	Balance	Year	Balance	Year	Balance
2004	6,168,381	2003	6,207,907	2002	6,244,392	2001	6,278,300
2000	6,309,740	1999	6,338,593	1998	6,364,986	1997	6,389,191
1996	6,411,289	1995	6,431,114	1994	6,448,940	1993	6,464,944
1992	6,479,223	1991	6,491,606	1990	6,502,484	1989	6,511,965
1988	6,520,097	1987	6,526,896	1986	6,532,640	1985	6,537,429
1984	6,541,300	1983	6,544,362	1982	6,546,791	1981	6,548,681
1980	6,550,051	1979	6,551,045	1978	6,551,747	1977	6,552,217

1976	6,552,495	1975	6,552,655	1974	6,552,740	1973	6,552,778
1972	6,552,787	1971	6,552,791	1970	6,552,791	1969	6,552,791
1968	6,552,791	1967	6,552,791	1966	6,552,791	1965	6,552,791
1964	6,552,791	1963	6,552,791	1962	6,552,791	1961	6,552,791
1960	6,552,791	1959	6,552,791	1958	6,552,791	1957	6,552,791
1956	6,552,791	1955	6,552,791	1954	6,552,791		

**Curve: R5 ASL: 69 SSD: 2.70E+11 IV: 11**

Year	Balance	Year	Balance	Year	Balance	Year	Balance
2004	6,263,251	2003	6,309,708	2002	6,349,861	2001	6,384,588
2000	6,414,575	1999	6,440,055	1998	6,461,960	1997	6,480,142
1996	6,495,588	1995	6,508,121	1994	6,518,518	1993	6,526,816
1992	6,533,456	1991	6,538,659	1990	6,542,646	1989	6,545,705
1988	6,547,921	1987	6,549,580	1986	6,550,704	1985	6,551,503
1984	6,552,022	1983	6,552,358	1982	6,552,560	1981	6,552,675
1980	6,552,741	1979	6,552,770	1978	6,552,785	1977	6,552,791
1976	6,552,791	1975	6,552,791	1974	6,552,791	1973	6,552,791
1972	6,552,791	1971	6,552,791	1970	6,552,791	1969	6,552,791
1968	6,552,791	1967	6,552,791	1966	6,552,791	1965	6,552,791
1964	6,552,791	1963	6,552,791	1962	6,552,791	1961	6,552,791
1960	6,552,791	1959	6,552,791	1958	6,552,791	1957	6,552,791
1956	6,552,791	1955	6,552,791	1954	6,552,791		

**Curve: S4 ASL: 73 SSD: 2.74E+11 IV: 11**

Year	Balance	Year	Balance	Year	Balance	Year	Balance
2004	6,257,524	2003	6,306,226	2002	6,348,366	2001	6,384,553
2000	6,415,834	1999	6,441,953	1998	6,464,023	1997	6,482,554
1996	6,497,517	1995	6,509,906	1994	6,519,888	1993	6,527,770
1992	6,534,094	1991	6,538,939	1990	6,542,680	1989	6,545,570
1988	6,547,653	1987	6,549,222	1986	6,550,363	1985	6,551,156
1984	6,551,726	1983	6,552,110	1982	6,552,362	1981	6,552,531
1980	6,552,638	1979	6,552,701	1978	6,552,740	1977	6,552,764
1976	6,552,777	1975	6,552,784	1974	6,552,788	1973	6,552,791
1972	6,552,791	1971	6,552,791	1970	6,552,791	1969	6,552,791
1968	6,552,791	1967	6,552,791	1966	6,552,791	1965	6,552,791
1964	6,552,791	1963	6,552,791	1962	6,552,791	1961	6,552,791
1960	6,552,791	1959	6,552,791	1958	6,552,791	1957	6,552,791
1956	6,552,791	1955	6,552,791	1954	6,552,791		

**Curve: L5 ASL: 70 SSD: 3.02E+11 IV: 12**

Year	Balance	Year	Balance	Year	Balance	Year	Balance
2004	6,248,790	2003	6,300,458	2002	6,345,590	2001	6,385,028
2000	6,419,125	1999	6,447,890	1998	6,472,375	1997	6,492,063
1996	6,508,273	1995	6,520,931	1994	6,530,732	1993	6,538,124
1992	6,543,377	1991	6,547,156	1990	6,549,541	1989	6,551,099
1988	6,551,983	1987	6,552,451	1986	6,552,677	1985	6,552,757

1984	6,552,784	1983	6,552,791	1982	6,552,791	1981	6,552,791
1980	6,552,791	1979	6,552,791	1978	6,552,791	1977	6,552,791
1976	6,552,791	1975	6,552,791	1974	6,552,791	1973	6,552,791
1972	6,552,791	1971	6,552,791	1970	6,552,791	1969	6,552,791
1968	6,552,791	1967	6,552,791	1966	6,552,791	1965	6,552,791
1964	6,552,791	1963	6,552,791	1962	6,552,791	1961	6,552,791
1960	6,552,791	1959	6,552,791	1958	6,552,791	1957	6,552,791
1956	6,552,791	1955	6,552,791	1954	6,552,791		

**Curve: S5 ASL: 65 SSD: 3.52E+11 IV: 13**

Year	Balance	Year	Balance	Year	Balance	Year	Balance
2004	6,295,113	2003	6,361,963	2002	6,414,376	2001	6,454,037
2000	6,484,178	1999	6,505,767	1998	6,521,665	1997	6,532,363
1996	6,539,915	1995	6,544,778	1994	6,548,010	1993	6,549,992
1992	6,551,214	1991	6,551,930	1990	6,552,341	1989	6,552,563
1988	6,552,680	1987	6,552,743	1986	6,552,771	1985	6,552,784
1984	6,552,788	1983	6,552,791	1982	6,552,791	1981	6,552,791
1980	6,552,791	1979	6,552,791	1978	6,552,791	1977	6,552,791
1976	6,552,791	1975	6,552,791	1974	6,552,791	1973	6,552,791
1972	6,552,791	1971	6,552,791	1970	6,552,791	1969	6,552,791
1968	6,552,791	1967	6,552,791	1966	6,552,791	1965	6,552,791
1964	6,552,791	1963	6,552,791	1962	6,552,791	1961	6,552,791
1960	6,552,791	1959	6,552,791	1958	6,552,791	1957	6,552,791
1956	6,552,791	1955	6,552,791	1954	6,552,791		

**Curve: S6 ASL: 59 SSD: 4.11E+11 IV: 14**

Year	Balance	Year	Balance	Year	Balance	Year	Balance
2004	6,250,057	2003	6,369,437	2002	6,448,099	2001	6,495,481
2000	6,523,074	1999	6,538,466	1998	6,546,265	1997	6,549,953
1996	6,551,669	1995	6,552,387	1994	6,552,646	1993	6,552,748
1992	6,552,778	1991	6,552,789	1990	6,552,791	1989	6,552,791
1988	6,552,791	1987	6,552,791	1986	6,552,791	1985	6,552,791
1984	6,552,791	1983	6,552,791	1982	6,552,791	1981	6,552,791
1980	6,552,791	1979	6,552,791	1978	6,552,791	1977	6,552,791
1976	6,552,791	1975	6,552,791	1974	6,552,791	1973	6,552,791
1972	6,552,791	1971	6,552,791	1970	6,552,791	1969	6,552,791
1968	6,552,791	1967	6,552,791	1966	6,552,791	1965	6,552,791
1964	6,552,791	1963	6,552,791	1962	6,552,791	1961	6,552,791
1960	6,552,791	1959	6,552,791	1958	6,552,791	1957	6,552,791
1956	6,552,791	1955	6,552,791	1954	6,552,791		

**Curve: S3 ASL: 79 SSD: 4.86E+11 IV: 15**

Year	Balance	Year	Balance	Year	Balance	Year	Balance
2004	6,029,812	2003	6,081,187	2002	6,128,714	2001	6,172,916
2000	6,213,894	1999	6,251,493	1998	6,285,864	1997	6,317,394
1996	6,346,205	1995	6,372,113	1994	6,395,500	1993	6,416,617



1992	6,435,601	1991	6,452,256	1990	6,467,086	1989	6,480,228
1988	6,491,745	1987	6,501,671	1986	6,510,315	1985	6,517,801
1984	6,524,169	1983	6,529,527	1982	6,534,076	1981	6,537,905
1980	6,541,029	1979	6,543,595	1978	6,545,698	1977	6,547,401
1976	6,548,725	1975	6,549,771	1974	6,550,592	1973	6,551,218
1972	6,551,681	1971	6,552,024	1970	6,552,278	1969	6,552,456
1968	6,552,576	1967	6,552,659	1966	6,552,715	1965	6,552,747
1964	6,552,764	1963	6,552,776	1962	6,552,784	1961	6,552,791
1960	6,552,791	1959	6,552,791	1958	6,552,791	1957	6,552,791
1956	6,552,791	1955	6,552,791	1954	6,552,791		

Curve: SQ ASL: 52 SSD: 5.03E+11 IV: 15

Year	Balance	Year	Balance	Year	Balance	Year	Balance
2004	6,552,791	2003	6,552,791	2002	6,552,791	2001	6,552,791
2000	6,552,791	1999	6,552,791	1998	6,552,791	1997	6,552,791
1996	6,552,791	1995	6,552,791	1994	6,552,791	1993	6,552,791
1992	6,552,791	1991	6,552,791	1990	6,552,791	1989	6,552,791
1988	6,552,791	1987	6,552,791	1986	6,552,791	1985	6,552,791
1984	6,552,791	1983	6,552,791	1982	6,552,791	1981	6,552,791
1980	6,552,791	1979	6,552,791	1978	6,552,791	1977	6,552,791
1976	6,552,791	1975	6,552,791	1974	6,552,791	1973	6,552,791
1972	6,552,791	1971	6,552,791	1970	6,552,791	1969	6,552,791
1968	6,552,791	1967	6,552,791	1966	6,552,791	1965	6,552,791
1964	6,552,791	1963	6,552,791	1962	6,552,791	1961	6,552,791
1960	6,552,791	1959	6,552,791	1958	6,552,791	1957	6,552,791
1956	6,552,791	1955	6,552,791	1954	6,552,791		

Curve: L3 ASL: 79 SSD: 2.00E+12 IV: 31

Year	Balance	Year	Balance	Year	Balance	Year	Balance
2004	5,729,675	2003	5,796,576	2002	5,858,850	2001	5,917,094
2000	5,971,421	1999	6,021,629	1998	6,067,952	1997	6,110,865
1996	6,150,563	1995	6,186,860	1994	6,220,262	1993	6,251,091
1992	6,279,540	1991	6,305,440	1990	6,329,363	1989	6,351,466
1988	6,371,833	1987	6,390,472	1986	6,407,716	1985	6,423,656
1984	6,438,293	1983	6,451,704	1982	6,464,059	1981	6,475,410
1980	6,485,688	1979	6,495,025	1978	6,503,504	1977	6,511,152
1976	6,517,895	1975	6,523,896	1974	6,529,195	1973	6,533,818
1972	6,537,731	1971	6,541,083	1970	6,543,911	1969	6,546,223
1968	6,548,064	1967	6,549,525	1966	6,550,653	1965	6,551,469
1964	6,552,030	1963	6,552,404	1962	6,552,630	1961	6,552,737
1960	6,552,781	1959	6,552,791	1958	6,552,791	1957	6,552,791
1956	6,552,791	1955	6,552,791	1954	6,552,791		

Curve: R3 ASL: 79 SSD: 2.40E+12 IV: 33

Year	Balance	Year	Balance	Year	Balance	Year	Balance
2004	5,784,612	2003	5,827,827	2002	5,868,993	2001	5,908,396

2000	5,946,102	1999	5,982,010	1998	6,016,206	1997	6,048,875
1996	6,080,062	1995	6,109,633	1994	6,137,772	1993	6,164,585
1992	6,190,114	1991	6,214,191	1990	6,237,079	1989	6,258,823
1988	6,279,406	1987	6,298,793	1986	6,317,157	1985	6,334,535
1984	6,350,886	1983	6,366,254	1982	6,380,756	1981	6,394,420
1980	6,407,195	1979	6,419,170	1978	6,430,422	1977	6,440,975
1976	6,450,768	1975	6,459,924	1974	6,468,487	1973	6,476,462
1972	6,483,829	1971	6,490,693	1970	6,497,076	1969	6,502,970
1968	6,508,398	1967	6,513,426	1966	6,518,076	1965	6,522,330
1964	6,526,235	1963	6,529,828	1962	6,533,133	1961	6,536,126
1960	6,538,866	1959	6,541,371	1958	6,543,647	1957	6,545,699
1956	6,547,565	1955	6,549,261	1954	6,550,786		

**Curve: S2 ASL: 79 SSD: 3.25E+12 IV: 39**

Year	Balance	Year	Balance	Year	Balance	Year	Balance
2004	5,625,046	2003	5,685,228	2002	5,742,956	2001	5,798,475
2000	5,851,787	1999	5,902,690	1998	5,951,205	1997	5,997,521
1996	6,041,659	1995	6,083,345	1994	6,122,811	1993	6,160,173
1992	6,195,454	1991	6,228,351	1990	6,259,258	1989	6,288,223
1988	6,315,220	1987	6,340,135	1986	6,363,275	1985	6,384,698
1984	6,404,333	1983	6,422,237	1982	6,438,632	1981	6,453,582
1980	6,466,998	1979	6,479,050	1978	6,489,886	1977	6,499,579
1976	6,508,024	1975	6,515,476	1974	6,522,016	1973	6,527,682
1972	6,532,472	1971	6,536,575	1970	6,540,054	1969	6,542,926
1968	6,545,261	1967	6,547,170	1966	6,548,699	1965	6,549,879
1964	6,550,771	1963	6,551,446	1962	6,551,943	1961	6,552,270
1960	6,552,494	1959	6,552,638	1958	6,552,720	1957	6,552,764
1956	6,552,782	1955	6,552,790	1954	6,552,791		

**Curve: R2.5 ASL: 79 SSD: 5.83E+12 IV: 52**

Year	Balance	Year	Balance	Year	Balance	Year	Balance
2004	5,574,858	2003	5,619,602	2002	5,662,628	2001	5,704,167
2000	5,744,266	1999	5,782,835	1998	5,819,924	1997	5,855,692
1996	5,890,173	1995	5,923,241	1994	5,955,045	1993	5,985,675
1992	6,015,161	1991	6,043,350	1990	6,070,470	1989	6,096,546
1988	6,121,572	1987	6,145,488	1986	6,168,462	1985	6,190,524
1984	6,211,627	1983	6,231,793	1982	6,251,135	1981	6,269,683
1980	6,287,362	1979	6,304,259	1978	6,320,442	1977	6,335,937
1976	6,350,657	1975	6,364,729	1974	6,378,190	1973	6,391,037
1972	6,403,240	1971	6,414,899	1970	6,426,032	1969	6,436,629
1968	6,446,698	1967	6,456,304	1966	6,465,470	1965	6,474,164
1964	6,482,428	1963	6,490,311	1962	6,497,822	1961	6,504,925
1960	6,511,689	1959	6,518,126	1958	6,524,259	1957	6,530,051
1956	6,535,565	1955	6,540,809	1954	6,545,788		

**Curve: S1.5 ASL: 79 SSD: 6.87E+12 IV: 57**

Year	Balance	Year	Balance	Year	Balance	Year	Balance
2004	5,412,093	2003	5,471,666	2002	5,529,403	2001	5,585,490
2000	5,639,909	1999	5,692,498	1998	5,743,253	1997	5,792,311
1996	5,839,667	1995	5,885,099	1994	5,928,758	1993	5,970,725
1992	6,011,006	1991	6,049,329	1990	6,085,989	1989	6,121,003
1988	6,154,336	1987	6,185,857	1986	6,215,807	1985	6,244,207
1984	6,270,971	1983	6,296,113	1982	6,319,812	1981	6,342,098
1980	6,362,837	1979	6,382,179	1978	6,400,225	1977	6,417,022
1976	6,432,415	1975	6,446,638	1974	6,459,742	1973	6,471,748
1972	6,482,579	1971	6,492,444	1970	6,501,378	1969	6,509,372
1968	6,516,454	1967	6,522,751	1966	6,528,318	1965	6,533,113
1964	6,537,241	1963	6,540,775	1962	6,543,762	1961	6,546,172
1960	6,548,128	1959	6,549,672	1958	6,550,851	1957	6,551,670
1956	6,552,232	1955	6,552,571	1954	6,552,737		

Curve: R2 ASL: 79 SSD: 1.10E+13 IV: 72

Year	Balance	Year	Balance	Year	Balance	Year	Balance
2004	5,365,106	2003	5,411,377	2002	5,456,268	2001	5,499,947
2000	5,542,437	1999	5,583,660	1998	5,623,645	1997	5,662,515
1996	5,700,290	1995	5,736,855	1994	5,772,325	1993	5,806,772
1992	5,840,221	1991	5,872,519	1990	5,903,861	1989	5,934,269
1988	5,963,731	1987	5,992,185	1986	6,019,774	1985	6,046,515
1984	6,072,361	1983	6,097,332	1982	6,121,519	1981	6,144,939
1980	6,167,523	1979	6,189,350	1978	6,210,469	1977	6,230,898
1976	6,250,546	1975	6,269,538	1974	6,287,899	1973	6,305,618
1972	6,322,657	1971	6,339,108	1970	6,354,994	1969	6,370,288
1968	6,384,995	1967	6,399,183	1966	6,412,864	1965	6,425,993
1964	6,438,625	1963	6,450,795	1962	6,462,510	1961	6,473,730
1960	6,484,518	1959	6,494,895	1958	6,504,870	1957	6,514,402
1956	6,523,562	1955	6,532,367	1954	6,540,796		

Curve: L2 ASL: 79 SSD: 1.15E+13 IV: 73

Year	Balance	Year	Balance	Year	Balance	Year	Balance
2004	5,121,607	2003	5,198,201	2002	5,273,018	2001	5,346,120
2000	5,417,370	1999	5,486,462	1998	5,553,264	1997	5,617,844
1996	5,680,102	1995	5,739,628	1994	5,796,549	1993	5,850,912
1992	5,902,675	1991	5,951,363	1990	5,997,415	1989	6,040,853
1988	6,081,594	1987	6,119,484	1986	6,154,937	1985	6,188,040
1984	6,218,741	1983	6,247,181	1982	6,273,697	1981	6,298,456
1980	6,321,424	1979	6,342,914	1978	6,363,142	1977	6,382,217
1976	6,400,023	1975	6,416,746	1974	6,432,405	1973	6,446,976
1972	6,460,360	1971	6,472,727	1970	6,484,091	1969	6,494,401
1968	6,503,661	1967	6,512,002	1966	6,519,448	1965	6,525,937
1964	6,531,559	1963	6,536,411	1962	6,540,523	1961	6,543,858
1960	6,546,552	1959	6,548,679	1958	6,550,277	1957	6,551,378
1956	6,552,105	1955	6,552,535	1954	6,552,737		

**Curve: S1                      ASL: 79                      SSD: 1.22E+13                      IV: 75**

Year	Balance	Year	Balance	Year	Balance	Year	Balance
2004	5,199,150	2003	5,258,104	2002	5,315,856	2001	5,372,506
2000	5,428,037	1999	5,482,307	1998	5,535,303	1997	5,587,103
1996	5,637,681	1995	5,686,852	1994	5,734,707	1993	5,781,283
1992	5,826,565	1991	5,870,305	1990	5,912,717	1989	5,953,789
1988	5,993,452	1987	6,031,580	1986	6,068,339	1985	6,103,717
1984	6,137,610	1983	6,169,994	1982	6,200,994	1981	6,230,608
1980	6,258,681	1979	6,285,307	1978	6,310,568	1977	6,334,471
1976	6,356,806	1975	6,377,799	1974	6,397,477	1973	6,415,809
1972	6,432,691	1971	6,448,313	1970	6,462,712	1969	6,475,818
1968	6,487,644	1967	6,498,339	1966	6,507,938	1965	6,516,358
1964	6,523,710	1963	6,530,104	1962	6,535,582	1961	6,540,074
1960	6,543,761	1959	6,546,717	1958	6,548,989	1957	6,550,586
1956	6,551,683	1955	6,552,357	1954	6,552,684		

**Curve: R1.5                      ASL: 79                      SSD: 1.95E+13                      IV: 96**

Year	Balance	Year	Balance	Year	Balance	Year	Balance
2004	5,148,112	2003	5,193,200	2002	5,237,252	2001	5,280,391
2000	5,322,629	1999	5,363,905	1998	5,404,246	1997	5,443,737
1996	5,482,401	1995	5,520,136	1994	5,557,040	1993	5,593,167
1992	5,628,533	1991	5,663,019	1990	5,696,780	1989	5,729,834
1988	5,762,164	1987	5,793,732	1986	5,824,646	1985	5,854,917
1984	5,884,511	1983	5,913,446	1982	5,941,787	1981	5,969,553
1980	5,996,687	1979	6,023,251	1978	6,049,278	1977	6,074,786
1976	6,099,706	1975	6,124,120	1974	6,148,047	1973	6,171,480
1972	6,194,377	1971	6,216,809	1970	6,238,781	1969	6,260,273
1968	6,281,270	1967	6,301,838	1966	6,321,969	1965	6,341,629
1964	6,360,850	1963	6,379,659	1962	6,398,060	1961	6,416,005
1960	6,433,551	1959	6,450,712	1958	6,467,481	1957	6,483,816
1956	6,499,790	1955	6,515,403	1954	6,530,631		

**Curve: S0.5                      ASL: 79                      SSD: 2.01E+13                      IV: 97**

Year	Balance	Year	Balance	Year	Balance	Year	Balance
2004	5,006,391	2003	5,061,951	2002	5,116,694	2001	5,170,676
2000	5,223,891	1999	5,276,239	1998	5,327,706	1997	5,378,340
1996	5,428,126	1995	5,476,926	1994	5,524,800	1993	5,571,771
1992	5,617,826	1991	5,662,775	1990	5,706,771	1989	5,749,803
1988	5,791,812	1987	5,832,691	1986	5,872,564	1985	5,911,419
1984	5,949,158	1983	5,985,752	1982	6,021,298	1981	6,055,784
1980	6,089,065	1979	6,121,217	1978	6,152,279	1977	6,182,254
1976	6,210,953	1975	6,238,535	1974	6,265,013	1973	6,290,347
1972	6,314,414	1971	6,337,369	1970	6,359,206	1969	6,379,853
1968	6,399,271	1967	6,417,580	1966	6,434,782	1965	6,450,745
1964	6,465,544	1963	6,479,238	1962	6,491,832	1961	6,503,158
1960	6,513,375	1959	6,522,499	1958	6,530,498	1957	6,537,242
1956	6,542,867	1955	6,547,355	1954	6,550,583		

<b>Curve: L1.5</b>		<b>ASL: 79</b>		<b>SSD: 2.12E+13</b>		<b>IV: 100</b>	
<b>Year</b>	<b>Balance</b>	<b>Year</b>	<b>Balance</b>	<b>Year</b>	<b>Balance</b>	<b>Year</b>	<b>Balance</b>
2004	4,871,729	2003	4,940,889	2002	5,009,180	2001	5,076,631
2000	5,143,158	1999	5,208,602	1998	5,272,849	1997	5,335,882
1996	5,397,607	1995	5,457,731	1994	5,516,285	1993	5,573,255
1992	5,628,585	1991	5,681,897	1990	5,733,446	1989	5,783,202
1988	5,831,062	1987	5,876,846	1986	5,920,807	1985	5,962,958
1984	6,003,180	1983	6,041,509	1982	6,078,149	1981	6,113,162
1980	6,146,416	1979	6,178,105	1978	6,208,362	1977	6,237,230
1976	6,264,506	1975	6,290,416	1974	6,314,965	1973	6,338,119
1972	6,359,744	1971	6,380,047	1970	6,399,046	1969	6,416,666
1968	6,432,913	1967	6,447,938	1966	6,461,780	1965	6,474,336
1964	6,485,734	1963	6,496,072	1962	6,505,402	1961	6,513,634
1960	6,520,949	1959	6,527,427	1958	6,533,112	1957	6,537,976
1956	6,542,203	1955	6,545,850	1954	6,548,952		

<b>Curve: S0</b>		<b>ASL: 79</b>		<b>SSD: 3.05E+13</b>		<b>IV: 119</b>	
<b>Year</b>	<b>Balance</b>	<b>Year</b>	<b>Balance</b>	<b>Year</b>	<b>Balance</b>	<b>Year</b>	<b>Balance</b>
2004	4,813,637	2003	4,865,804	2002	4,917,529	2001	4,968,847
2000	5,019,745	1999	5,070,172	1998	5,120,111	1997	5,169,585
1996	5,218,577	1995	5,267,004	1994	5,314,899	1993	5,362,267
1992	5,409,087	1991	5,455,247	1990	5,500,831	1989	5,545,818
1988	5,590,173	1987	5,633,808	1986	5,676,799	1985	5,719,122
1984	5,760,701	1983	5,801,519	1982	5,841,611	1981	5,880,961
1980	5,919,455	1979	5,957,126	1978	5,993,995	1977	6,030,044
1976	6,065,096	1975	6,099,274	1974	6,132,554	1973	6,164,885
1972	6,196,140	1971	6,226,423	1970	6,255,706	1969	6,283,889
1968	6,310,904	1967	6,336,828	1966	6,361,632	1965	6,385,136
1964	6,407,377	1963	6,428,374	1962	6,448,081	1961	6,466,249
1960	6,482,992	1959	6,498,285	1958	6,512,019	1957	6,523,896
1956	6,534,053	1955	6,542,358	1954	6,548,483		

<b>Curve: R1</b>		<b>ASL: 79</b>		<b>SSD: 3.08E+13</b>		<b>IV: 120</b>	
<b>Year</b>	<b>Balance</b>	<b>Year</b>	<b>Balance</b>	<b>Year</b>	<b>Balance</b>	<b>Year</b>	<b>Balance</b>
2004	4,931,113	2003	4,975,023	2002	5,018,240	2001	5,060,836
2000	5,102,826	1999	5,144,156	1998	5,184,853	1997	5,224,968
1996	5,264,507	1995	5,303,417	1994	5,341,758	1993	5,379,563
1992	5,416,845	1991	5,453,522	1990	5,489,707	1989	5,525,400
1988	5,560,603	1987	5,595,285	1986	5,629,520	1985	5,663,319
1984	5,696,660	1983	5,729,559	1982	5,762,055	1981	5,794,166
1980	5,825,850	1979	5,857,149	1978	5,888,092	1977	5,918,680
1976	5,948,862	1975	5,978,704	1974	6,008,204	1973	6,037,348
1972	6,066,106	1971	6,094,510	1970	6,122,573	1969	6,150,253
1968	6,177,547	1967	6,204,489	1966	6,231,075	1965	6,257,264
1964	6,283,072	1963	6,308,524	1962	6,333,611	1961	6,358,285

1960	6,382,585	1959	6,406,524	1958	6,430,092	1957	6,453,237
1956	6,476,021	1955	6,498,438	1954	6,520,466		

**Curve: L1 ASL: 79 SSD: 3.45E+13 IV: 127**

Year	Balance	Year	Balance	Year	Balance	Year	Balance
2004	4,621,853	2003	4,683,578	2002	4,745,347	2001	4,807,142
2000	4,868,951	1999	4,930,747	1998	4,992,434	1997	5,053,920
1996	5,115,106	1995	5,175,834	1994	5,236,024	1993	5,295,604
1992	5,354,489	1991	5,412,433	1990	5,469,480	1989	5,525,552
1988	5,580,531	1987	5,634,215	1986	5,686,688	1985	5,737,882
1984	5,787,625	1983	5,835,845	1982	5,882,607	1981	5,927,875
1980	5,971,412	1979	6,013,298	1978	6,053,579	1977	6,092,244
1976	6,128,996	1975	6,164,089	1974	6,197,531	1973	6,229,269
1972	6,259,134	1971	6,287,373	1970	6,314,003	1969	6,338,936
1968	6,362,164	1967	6,383,880	1966	6,404,112	1965	6,422,744
1964	6,439,907	1963	6,455,738	1962	6,470,281	1961	6,483,409
1960	6,495,347	1959	6,506,186	1958	6,515,947	1957	6,524,579
1956	6,532,297	1955	6,539,158	1954	6,545,174		

**Curve: S-0.5 ASL: 79 SSD: 4.73E+13 IV: 149**

Year	Balance	Year	Balance	Year	Balance	Year	Balance
2004	4,615,276	2003	4,662,095	2002	4,708,693	2001	4,755,089
2000	4,801,276	1999	4,847,226	1998	4,892,932	1997	4,938,407
1996	4,983,636	1995	5,028,591	1994	5,073,273	1993	5,117,689
1992	5,161,837	1991	5,205,657	1990	5,249,186	1989	5,292,418
1988	5,335,330	1987	5,377,881	1986	5,420,113	1985	5,462,014
1984	5,503,540	1983	5,544,683	1982	5,585,466	1981	5,625,877
1980	5,665,862	1979	5,705,438	1978	5,744,607	1977	5,783,362
1976	5,821,630	1975	5,859,454	1974	5,896,830	1973	5,933,733
1972	5,970,099	1971	6,005,978	1970	6,041,356	1969	6,076,182
1968	6,110,429	1967	6,144,125	1966	6,177,266	1965	6,209,755
1964	6,241,609	1963	6,272,841	1962	6,303,438	1961	6,333,257
1960	6,362,363	1959	6,390,746	1958	6,418,353	1957	6,445,028
1956	6,470,840	1955	6,495,732	1954	6,519,532		

**Curve: R0.5 ASL: 79 SSD: 4.78E+13 IV: 149**

Year	Balance	Year	Balance	Year	Balance	Year	Balance
2004	4,674,010	2003	4,716,708	2002	4,759,049	2001	4,801,083
2000	4,842,816	1999	4,884,220	1998	4,925,302	1997	4,966,096
1996	5,006,604	1995	5,046,793	1994	5,086,704	1993	5,126,339
1992	5,165,716	1991	5,204,792	1990	5,243,623	1989	5,282,209
1988	5,320,545	1987	5,358,624	1986	5,396,473	1985	5,434,112
1984	5,471,523	1983	5,508,706	1982	5,545,689	1981	5,582,483
1980	5,619,058	1979	5,655,446	1978	5,691,654	1977	5,727,684
1976	5,763,515	1975	5,799,170	1974	5,834,656	1973	5,869,968
1972	5,905,083	1971	5,940,022	1970	5,974,790	1969	6,009,367

1968	6,043,754	1967	6,077,960	1966	6,111,991	1965	6,145,817
1964	6,179,463	1963	6,212,923	1962	6,246,202	1961	6,279,274
1960	6,312,163	1959	6,344,866	1958	6,377,387	1957	6,409,698
1956	6,441,826	1955	6,473,773	1954	6,505,523		

**Curve: L0.5 ASL: 79 SSD: 4.93E+13 IV: 152**

Year	Balance	Year	Balance	Year	Balance	Year	Balance
2004	4,450,124	2003	4,506,594	2002	4,563,134	2001	4,619,723
2000	4,676,357	1999	4,733,023	1998	4,789,668	1997	4,846,235
1996	4,902,671	1995	4,958,901	1994	5,014,874	1993	5,070,556
1992	5,125,895	1991	5,180,757	1990	5,235,170	1989	5,289,076
1988	5,342,390	1987	5,395,010	1986	5,446,952	1985	5,498,174
1984	5,548,575	1983	5,598,088	1982	5,646,751	1981	5,694,522
1980	5,741,263	1979	5,786,990	1978	5,831,723	1977	5,875,446
1976	5,917,953	1975	5,959,378	1974	5,999,718	1973	6,038,914
1972	6,076,827	1971	6,113,601	1970	6,149,227	1969	6,183,602
1968	6,216,676	1967	6,248,563	1966	6,279,252	1965	6,308,587
1964	6,336,631	1963	6,363,426	1962	6,388,970	1961	6,413,017
1960	6,435,731	1959	6,457,085	1958	6,476,993	1957	6,495,188
1956	6,511,780	1955	6,526,607	1954	6,539,271		

**Curve: L0 ASL: 79 SSD: 6.76E+13 IV: 178**

Year	Balance	Year	Balance	Year	Balance	Year	Balance
2004	4,278,405	2003	4,329,610	2002	4,380,920	2001	4,432,304
2000	4,483,769	1999	4,535,304	1998	4,586,902	1997	4,638,550
1996	4,690,236	1995	4,741,970	1994	4,793,727	1993	4,845,504
1992	4,897,294	1991	4,949,091	1990	5,000,864	1989	5,052,596
1988	5,104,254	1987	5,155,802	1986	5,207,216	1985	5,258,473
1984	5,309,520	1983	5,360,335	1982	5,410,895	1981	5,461,176
1980	5,511,114	1979	5,560,681	1978	5,609,871	1977	5,658,647
1976	5,706,905	1975	5,754,669	1974	5,801,907	1973	5,848,565
1972	5,894,528	1971	5,939,839	1970	5,984,452	1969	6,028,262
1968	6,071,186	1967	6,113,249	1966	6,154,399	1965	6,194,440
1964	6,233,352	1963	6,271,121	1962	6,307,653	1961	6,342,634
1960	6,376,114	1959	6,407,989	1958	6,438,046	1957	6,465,803
1956	6,491,262	1955	6,514,060	1954	6,533,362		

**Curve: O1 ASL: 79 SSD: 6.87E+13 IV: 179**

Year	Balance	Year	Balance	Year	Balance	Year	Balance
2004	4,416,913	2003	4,458,386	2002	4,499,860	2001	4,541,333
2000	4,582,806	1999	4,624,280	1998	4,665,753	1997	4,707,226
1996	4,748,700	1995	4,790,173	1994	4,831,647	1993	4,873,120
1992	4,914,593	1991	4,956,067	1990	4,997,540	1989	5,039,013
1988	5,080,487	1987	5,121,960	1986	5,163,433	1985	5,204,907
1984	5,246,380	1983	5,287,853	1982	5,329,327	1981	5,370,800
1980	5,412,274	1979	5,453,747	1978	5,495,220	1977	5,536,694

1976	5,578,167	1975	5,619,640	1974	5,661,114	1973	5,702,587
1972	5,744,060	1971	5,785,534	1970	5,827,007	1969	5,868,481
1968	5,909,954	1967	5,951,427	1966	5,992,901	1965	6,034,374
1964	6,075,847	1963	6,117,321	1962	6,158,794	1961	6,200,267
1960	6,241,741	1959	6,283,214	1958	6,324,688	1957	6,366,161
1956	6,407,634	1955	6,449,108	1954	6,490,581		

**Curve: O2 ASL: 79 SSD: 8.84E+13 IV: 203**

Year	Balance	Year	Balance	Year	Balance	Year	Balance
2004	4,151,446	2003	4,198,078	2002	4,244,711	2001	4,291,348
2000	4,337,983	1999	4,384,616	1998	4,431,255	1997	4,477,892
1996	4,524,526	1995	4,571,166	1994	4,617,801	1993	4,664,442
1992	4,711,077	1991	4,757,716	1990	4,804,352	1989	4,850,988
1988	4,897,627	1987	4,944,266	1986	4,990,903	1985	5,037,538
1984	5,084,177	1983	5,130,812	1982	5,177,449	1981	5,224,088
1980	5,270,727	1979	5,317,363	1978	5,363,999	1977	5,410,638
1976	5,457,273	1975	5,503,914	1974	5,550,549	1973	5,597,189
1972	5,643,823	1971	5,690,461	1970	5,737,099	1969	5,783,733
1968	5,830,372	1967	5,877,004	1966	5,923,643	1965	5,970,276
1964	6,016,906	1963	6,063,535	1962	6,110,161	1961	6,156,785
1960	6,203,406	1959	6,250,017	1958	6,296,625	1957	6,343,229
1956	6,389,820	1955	6,436,400	1954	6,482,967		

**Curve: O3 ASL: 79 SSD: 1.72E+14 IV: 284**

Year	Balance	Year	Balance	Year	Balance	Year	Balance
2004	3,412,032	2003	3,460,036	2002	3,508,759	2001	3,558,115
2000	3,608,102	1999	3,658,778	1998	3,710,123	1997	3,762,088
1996	3,814,667	1995	3,867,925	1994	3,921,814	1993	3,976,291
1992	4,031,349	1991	4,087,079	1990	4,143,371	1989	4,200,220
1988	4,257,629	1987	4,315,644	1986	4,374,171	1985	4,433,210
1984	4,492,779	1983	4,552,876	1982	4,613,439	1981	4,674,456
1980	4,735,967	1979	4,797,927	1978	4,860,297	1977	4,923,067
1976	4,986,287	1975	5,049,875	1974	5,113,820	1973	5,178,116
1972	5,242,783	1971	5,307,767	1970	5,373,046	1969	5,438,634
1968	5,504,525	1967	5,570,673	1966	5,637,066	1965	5,703,718
1964	5,770,610	1963	5,837,712	1962	5,905,011	1961	5,972,524
1960	6,040,223	1959	6,108,088	1958	6,176,111	1957	6,244,304
1956	6,312,635	1955	6,381,095	1954	6,449,687		

**Curve: O4 ASL: 79 SSD: 2.80E+14 IV: 362**

Year	Balance	Year	Balance	Year	Balance	Year	Balance
2004	2,805,735	2003	2,847,683	2002	2,890,791	2001	2,934,955
2000	2,980,204	1999	3,026,659	1998	3,074,349	1997	3,123,192
1996	3,173,217	1995	3,224,615	1994	3,277,290	1993	3,331,215
1992	3,386,404	1991	3,443,109	1990	3,501,118	1989	3,560,438
1988	3,621,141	1987	3,683,358	1986	3,746,920	1985	3,811,833



1984	3,878,204	1983	3,946,040	1982	4,015,219	1981	4,085,729
1980	4,157,723	1979	4,231,088	1978	4,305,738	1977	4,381,653
1976	4,459,018	1975	4,537,603	1974	4,617,372	1973	4,698,329
1972	4,780,554	1971	4,863,851	1970	4,948,186	1969	5,033,594
1968	5,120,043	1967	5,207,402	1966	5,295,628	1965	5,384,764
1964	5,474,722	1963	5,565,410	1962	5,656,780	1961	5,748,902
1960	5,841,626	1959	5,934,908	1958	6,028,722	1957	6,123,089
1956	6,217,897	1955	6,313,109	1954	6,408,720		

1988	17,598,890	1987	17,660,502	1986	17,716,250	1985	17,731,035
1984	17,598,570	1983	5,399,902	1982	5,338,681	1981	4,990,983
1980	4,286,400	1979	4,296,964	1978	3,745,732	1977	3,742,204
1976	3,428,448	1975	3,178,198	1974	3,084,113	1973	3,071,012
1972	3,059,756	1971	3,038,663	1970	3,013,769	1969	2,208,829
1968	1,811,392	1967	1,815,887	1966	1,600,564	1965	1,532,720
1964	1,387,916	1963	1,159,345	1962	1,138,586	1961	837,682
1960	835,639	1959	836,659	1958	824,743	1957	779,264
1956	766,023	1955	766,980	1954	766,493	1953	762,593
1952	729,509	1951	716,846	1950	712,382	1949	713,905
1948	681,637	1947	673,406	1946	671,313	1945	665,260
1944	595,214	1943	596,223	1942	124,148	1941	1,444
1940	1,241	1939	1,244	1938	1,246	1937	91

**Curve: R0.5 ASL: 100 SSD: 3.28E+13 IV: 93**

Year	Balance	Year	Balance	Year	Balance	Year	Balance
2004	21,260,634	2003	21,323,353	2002	21,412,740	2001	21,305,929
2000	21,121,408	1999	20,892,350	1998	20,052,941	1997	19,193,643
1996	18,695,730	1995	18,650,195	1994	18,383,826	1993	18,139,964
1992	17,899,591	1991	17,899,023	1990	17,647,961	1989	17,616,886
1988	17,501,701	1987	17,573,202	1986	17,643,038	1985	17,677,004
1984	17,570,458	1983	5,386,618	1982	5,325,610	1981	4,978,583
1980	4,274,140	1979	4,284,677	1978	3,733,397	1977	3,729,708
1976	3,415,989	1975	3,165,561	1974	3,071,308	1973	3,058,371
1972	3,047,776	1971	3,027,918	1970	3,004,974	1969	2,201,626
1968	1,804,658	1967	1,809,464	1966	1,594,523	1965	1,527,015
1964	1,382,593	1963	1,154,184	1962	1,133,500	1961	832,434
1960	829,928	1959	830,576	1958	818,379	1957	772,644
1956	759,160	1955	759,950	1954	759,397	1953	755,538
1952	722,564	1951	710,064	1950	705,860	1949	707,774
1948	676,000	1947	668,359	1946	667,012	1945	661,896
1944	592,915	1943	595,185	1942	123,982	1941	1,436
1940	1,235	1939	1,240	1938	1,244	1937	91

**Curve: O1 ASL: 100 SSD: 5.13E+13 IV: 116**

Year	Balance	Year	Balance	Year	Balance	Year	Balance
2004	20,779,065	2003	20,861,279	2002	20,970,566	2001	20,883,947
2000	20,749,749	1999	20,511,058	1998	19,691,657	1997	18,851,624
1996	18,372,423	1995	18,345,535	1994	18,097,881	1993	17,872,688
1992	17,650,950	1991	17,669,116	1990	17,436,883	1989	17,424,718
1988	17,328,599	1987	17,419,381	1986	17,508,834	1985	17,562,728
1984	17,476,307	1983	5,305,302	1982	5,249,789	1981	4,908,082
1980	4,208,387	1979	4,223,313	1978	3,676,151	1977	3,676,295
1976	3,366,266	1975	3,119,232	1974	3,028,208	1973	3,018,477
1972	3,011,115	1971	2,994,513	1970	2,974,842	1969	2,174,299
1968	1,779,437	1967	1,786,137	1966	1,572,985	1965	1,507,116
1964	1,364,224	1963	1,137,137	1962	1,117,640	1961	817,579
1960	815,906	1959	817,397	1958	806,047	1957	761,135
1956	748,449	1955	750,040	1954	750,298	1953	747,258
1952	715,090	1951	703,380	1950	699,964	1949	702,675
1948	671,689	1947	664,822	1946	664,253	1945	659,920
1944	591,685	1943	594,669	1942	123,901	1941	1,430
1940	1,231	1939	1,237	1938	1,243	1937	91

Curve: O2                      ASL: 100                      SSD: 6.48E+13                      IV: 131

Year	Balance	Year	Balance	Year	Balance	Year	Balance
2004	20,471,938	2003	20,568,599	2002	20,692,308	2001	20,620,051
2000	20,470,062	1999	20,275,387	1998	19,469,608	1997	18,642,622
1996	18,175,998	1995	18,161,463	1994	17,926,015	1993	17,712,816
1992	17,502,863	1991	17,532,686	1990	17,311,986	1989	17,311,208
1988	17,226,372	1987	17,328,369	1986	17,429,015	1985	17,494,075
1984	17,418,734	1983	5,255,004	1982	5,203,001	1981	4,864,663
1980	4,168,000	1979	4,185,732	1978	3,641,198	1977	3,643,788
1976	3,336,096	1975	3,091,217	1974	3,002,232	1973	2,994,498
1972	2,989,116	1971	2,974,474	1970	2,956,740	1969	2,157,872
1968	1,764,312	1967	1,772,187	1966	1,560,140	1965	1,495,285
1964	1,353,338	1963	1,127,077	1962	1,108,327	1961	808,910
1960	807,787	1959	809,825	1958	799,016	1957	754,624
1956	742,437	1955	744,522	1954	745,272	1953	742,720
1952	711,027	1951	699,775	1950	696,811	1949	699,970
1948	669,421	1947	662,977	1946	662,824	1945	658,905
1944	591,058	1943	594,408	1942	123,860	1941	1,427
1940	1,229	1939	1,236	1938	1,243	1937	91

Curve: O3                      ASL: 100                      SSD: 1.34E+14                      IV: 188

Year	Balance	Year	Balance	Year	Balance	Year	Balance
2004	19,272,692	2003	19,421,452	2002	19,597,841	2001	19,578,583
2000	19,481,531	1999	19,339,559	1998	18,585,349	1997	17,807,925
1996	17,389,296	1995	17,422,261	1994	17,234,120	1993	17,067,760
1992	16,904,195	1991	16,980,258	1990	16,805,621	1989	16,850,688
1988	16,811,644	1987	16,959,505	1986	17,106,333	1985	17,217,822
1984	17,188,915	1983	5,055,199	1982	5,016,831	1981	4,691,640
1980	4,006,769	1979	4,035,414	1978	3,501,115	1977	3,513,241

1976	3,214,701	1975	2,978,254	1974	2,897,275	1973	2,897,435
1972	2,899,949	1971	2,893,190	1970	2,883,308	1969	2,091,208
1968	1,702,824	1967	1,715,369	1966	1,507,729	1965	1,446,917
1964	1,308,744	1963	1,085,770	1962	1,069,985	1961	773,113
1960	774,137	1959	778,329	1958	769,668	1957	727,355
1956	717,175	1955	721,255	1954	724,008	1953	723,458
1952	693,724	1951	684,374	1950	683,293	1949	688,335
1948	659,633	1947	654,985	1946	656,620	1945	654,481
1944	588,317	1943	593,261	1942	123,679	1941	1,415
1940	1,220	1939	1,231	1938	1,241	1937	91

Curve: O4 ASL: 100 SSD: 2.44E+14 IV: 254

Year	Balance	Year	Balance	Year	Balance	Year	Balance
2004	17,915,353	2003	18,118,663	2002	18,350,946	2001	18,388,600
2000	18,348,968	1999	18,264,674	1998	17,567,275	1997	16,844,698
1996	16,479,462	1995	16,565,687	1994	16,431,001	1993	16,317,907
1992	16,207,434	1991	16,336,780	1990	16,215,557	1989	16,314,075
1988	16,328,712	1987	16,530,612	1986	16,732,108	1985	16,898,799
1984	16,925,305	1983	4,826,931	1982	4,803,840	1981	4,493,435
1980	3,821,782	1979	3,862,655	1978	3,339,840	1977	3,362,670
1976	3,074,440	1975	2,847,491	1974	2,775,555	1973	2,784,688
1972	2,796,236	1971	2,798,556	1970	2,797,771	1969	2,013,482
1968	1,630,994	1967	1,648,850	1966	1,446,235	1965	1,390,037
1964	1,256,180	1963	1,036,953	1962	1,024,547	1961	730,562
1960	734,008	1959	740,654	1958	734,460	1957	694,549
1956	686,701	1955	693,118	1954	698,233	1953	700,060
1952	672,661	1951	665,590	1950	666,776	1949	674,098
1948	647,638	1947	645,179	1946	648,998	1945	649,041
1944	584,944	1943	591,850	1942	123,457	1941	1,400
1940	1,210	1939	1,224	1938	1,239	1937	90

Kentucky Power Company  
Electric Plant In Service  
Geometric Mean Turnover Analysis

Account 352 - Structures & Improvements

Year	3 Year Band													
	BOY Plant Balance a	Avg. Plant Balance b=(a+(a+1))/2	Single Year Additions c	Single Year Retirements d	Addition Ratio e = c/b	Retirement Ratio f = d/b	Geometric Mean Life Estimate g = 1/sqrt(e*f)	3 Year Band h	Avg. Plant Balance i	Additions j	Retirements k	Addition Ratio l = j/i	Retirement Ratio m = k/i	Geometric Mean Life Estimate n = 1/sqrt(l*m)
1923	-	2,970	5,940	-	2.00000	-	-	-	-	-	-	-	-	-
1924	5,940	5,940	-	-	-	-	-	-	-	-	-	-	-	-
1925	5,940	5,940	-	-	-	-	-	-	-	-	-	-	-	-
1926	5,940	10,775	9,670	-	0.89745	-	1923-25	14,850	5,940	-	0.40000	-	-	-
1927	15,610	16,345	1,470	-	0.06994	-	1924-26	22,655	9,670	-	0.42684	-	-	-
1928	17,080	17,080	-	-	-	-	1925-27	33,060	11,140	-	0.33696	-	-	-
1929	17,080	25,025	15,890	-	0.63497	-	1926-28	44,200	11,140	-	0.25204	-	-	-
1930	32,970	48,016	30,091	-	0.62669	-	1927-29	58,450	17,360	-	0.29701	-	-	-
1931	63,061	63,061	-	-	-	-	1928-30	90,121	45,981	-	0.51022	-	-	-
1932	63,061	63,061	-	-	-	-	1929-31	136,102	45,981	-	0.33784	-	-	-
1933	63,061	63,061	-	-	-	-	1930-32	174,138	30,091	-	0.17280	-	-	-
1934	63,061	63,061	-	-	-	-	1931-33	189,183	-	-	-	-	-	-
1935	63,061	63,061	-	-	-	-	1932-34	189,183	-	-	-	-	-	-
1936	63,061	63,080	37	-	0.00059	-	1933-35	189,183	-	-	-	-	-	-
1937	63,098	63,098	-	-	-	-	1934-36	189,202	37	-	0.00020	-	-	-
1938	63,098	63,577	957	-	0.01505	-	1935-37	189,239	37	-	0.00020	-	-	-
1939	64,055	64,055	-	-	-	-	1936-38	189,754	994	-	0.00524	-	-	-
1940	64,055	65,856	3,601	-	0.05468	-	1937-39	190,730	957	-	0.00502	-	-	-
1941	67,656	67,784	256	-	0.00378	-	1938-40	193,487	4,558	-	0.02356	-	-	-
1942	67,912	71,660	7,495	-	0.10459	-	1939-41	197,695	3,857	-	0.01951	-	-	-
1943	75,407	80,520	10,226	-	0.12700	-	1940-42	205,299	11,352	-	0.05529	-	-	-
1944	85,633	86,806	2,345	-	0.02701	-	1941-43	219,964	17,977	-	0.08173	-	-	-
1945	87,978	88,372	787	-	0.00891	-	1942-44	238,985	20,065	-	0.08396	-	-	-
1946	88,765	89,019	507	-	0.00570	-	1943-45	255,697	13,358	-	0.05224	-	-	-
1947	89,272	89,294	44	-	0.00049	-	1944-46	264,196	3,639	-	0.01377	-	-	-
1948	89,316	90,202	1,771	-	0.01963	-	1945-47	266,684	1,338	-	0.00502	-	-	-
1949	91,087	91,112	50	-	0.00055	-	1946-48	268,514	2,322	-	0.00865	-	-	-
1950	91,137	91,137	-	-	-	-	1947-49	270,608	1,865	-	0.00689	-	-	-
1951	91,137	96,621	10,968	-	0.11352	-	1948-50	272,451	1,821	-	0.00668	-	-	-
1952	102,105	106,233	8,256	-	0.07772	-	1949-51	278,870	11,018	-	0.03951	-	-	-
1953	110,361	111,429	2,135	-	0.01916	-	1950-52	293,991	19,224	-	0.06539	-	-	-
1954	112,496	132,234	39,830	355	0.30121	0.00268	1951-53	314,283	21,359	-	0.06796	-	-	-
1955	151,971	154,169	4,717	321	0.03060	0.00208	1952-54	349,895	50,221	355	0.14353	0.00101	82.87	-
1956	156,367	156,778	822	-	0.00524	-	1953-55	397,831	46,682	676	0.11734	0.00170	70.82	-
1957	157,189	157,768	1,158	-	0.00734	-	1954-56	443,181	45,369	676	0.10237	0.00153	80.03	-
1958	158,347	162,099	8,141	638	0.05022	0.00394	1955-57	468,715	6,697	321	0.01429	0.00068	319.68	-
1959	165,850	165,926	1,799	1,648	0.01084	0.00993	1956-58	476,645	10,121	638	0.02123	0.00134	187.57	-
1960	166,001	167,460	2,917	-	0.01742	-	1957-59	485,792	11,098	2,286	0.02285	0.00471	96.45	-
1961	168,918	169,103	757	388	0.00448	0.00229	1958-60	495,484	12,857	2,286	0.02595	0.00461	91.39	-
1962	169,287	175,039	11,835	331	0.06761	0.00189	1959-61	502,488	5,473	2,036	0.01089	0.00405	150.53	-
1963	180,791	190,844	21,484	1,379	0.11257	0.00723	1960-62	511,601	15,509	7,119	0.03031	0.00141	153.21	-
1964	200,896	204,594	8,446	1,051	0.04128	0.00514	1961-63	534,985	34,076	2,098	0.06370	0.00392	63.27	-
1965	208,291	207,950	4,567	5,250	0.02196	0.02525	1962-64	570,476	41,765	2,761	0.07321	0.00484	53.12	-
1966	207,608	225,229	35,242	-	0.15847	-	1963-65	603,387	34,497	7,680	0.05717	0.01273	37.07	-
1967	242,850	253,294	24,114	3,227	0.09520	0.01274	1964-66	637,772	48,255	6,301	0.07566	0.00988	36.58	-
1968	263,737	280,327	33,180	-	0.11836	-	1965-67	686,472	63,923	8,477	0.09312	0.01235	29.49	-
1969	296,917	297,024	1,349	1,135	0.00454	0.00382	1966-68	758,850	92,536	3,227	0.12194	0.00425	43.91	-
1970	297,131	322,815	52,047	679	0.16123	0.00210	1967-69	830,645	58,643	4,362	0.07060	0.00525	51.94	-
1971	348,499	355,933	14,868	-	0.04177	-	1968-70	900,166	66,576	1,814	0.09818	0.00202	71.83	-
1972	363,367	363,100	886	-	0.00244	-	1969-71	975,772	68,264	1,814	0.06996	0.00186	87.89	-
1973	364,253	396,196	67,516	3,631	0.17041	0.00916	1970-72	1,042,558	67,801	679	0.06503	0.00065	153.66	-
1974	428,138	1,006,595	1,158,254	1,341	1.15067	0.00133	1971-73	1,115,939	83,270	3,631	0.07462	0.00325	64.18	-
1975	1,585,051	1,575,167	14,323	34,092	0.00909	0.02164	1972-74	1,766,600	1,226,656	4,972	0.69436	0.00281	22.62	-
1976	1,585,282	1,604,094	87,818	9,994	0.05462	0.00623	1973-75	2,977,957	1,240,093	39,064	0.41642	0.01312	13.53	-
1977	1,642,906	1,722,870	159,927	-	0.09283	-	1974-76	4,185,855	1,260,195	45,427	0.30106	0.01085	17.49	-
1978	1,802,833	1,802,896	125	-	0.00007	-	1975-77	4,902,130	261,868	44,086	0.05342	0.00899	45.62	-
1979	1,802,958	1,806,677	7,678	241	0.00425	0.00013	1976-78	5,129,859	247,670	9,994	0.04828	0.00195	103.11	-
1980	1,810,395	1,860,346	102,906	3,004	0.05532	0.00161	1977-79	5,332,442	167,730	241	0.03145	0.00005	838.71	-
1981	1,910,297	2,706,247	1,629,148	37,248	0.60200	0.01376	1978-80	5,469,918	110,709	3,245	0.02024	0.00059	288.59	-
1982	3,502,197	3,577,137	151,423	1,544	0.04233	0.00043	1979-81	6,373,270	1,739,732	40,493	0.27297	0.00635	24.01	-
1983	3,652,076	3,680,189	59,204	2,978	0.01609	0.00081	1980-82	8,143,730	1,883,477	41,796	0.23128	0.00513	29.03	-
1984	3,708,302	3,766,092	115,579	-	0.03069	-	1981-83	9,963,573	1,839,775	41,770	0.18465	0.00419	35.94	-
1985	3,823,881	3,869,790	96,494	4,677	0.02494	0.00121	1982-84	11,023,417	326,206	4,522	0.02959	0.00041	287.02	-
1986	3,915,698	3,987,470	148,409	4,865	0.03722	0.00122	1983-85	11,316,070	271,277	7,655	0.02397	0.00068	248.32	-
1987	4,059,242	4,065,511	15,649	3,012	0.00382	0.00074	1984-86	11,623,351	360,482	9,542	0.03101	0.00092	198.18	-
1988	4,071,779	4,072,013	5,196	4,729	0.00128	0.00116	1985-87	11,922,770	260,452	12,554	0.02184	0.00105	208.51	-
1989	4,072,246	4,073,119	1,746	-	0.00043	-	1986-88	12,124,993	169,154	12,606	0.01395	0.00104	262.57	-
1990	4,073,992	4,106,466	66,195	1,248	0.01612	0.00030	1987-89	12,210,642	22,491	7,741	0.00184	0.00063	925.41	-
1991	4,138,939	4,159,055	45,070	4,839	0.01084	0.00116	1988-90	12,251,597	73,137	5,977	0.00597	0.00049	585.98	-
1992	4,179,170	4,236,320	982	982	0.02721	0.00023	1989-91	12,338,639	113,011	6,087	0.00916	0.00049	470.44	-
1993	4,293,470	4,475,216	372,229	8,738	0.08318	0.00195	1990-92	12,501,840	226,547	7,069	0.01812	0.00057	312.40	-
1994	4,656,961	4,681,294	49,187	522	0.01051	0.00011	1991-93	12,870,590	532,581	14,559	0.04138	0.00113	146.16	-
1995	4,705,626	4,762,119	115,575	2,589	0.02427	0.00054	1992-94	13,392,829	536,698	10,242	0.04007	0.00076	180.64	-
1996	4,818,612	4,908,669	180,114	-	0.03669	-	1993-95	13,918,628	536,991	11,849	0.03858	0.00085	174.49	-
1997	4,998,726	5,094,881	203,592	11,283	0.03996	0.00221	1994-96	14,352,082	344,876	3,111	0.02403	0.00022	438.16	-
1998	5,191,035	5,217,270	58,660	6,190	0.01124	0.00119	1995-97	14,765,669	499,281	13,872	0.03381	0.00094	177.42	-
1999	5,243,505	5,252,920	19,202	373	0.00366	0.00007	1996-98	15,220,820	442,366	17,473	0.02906	0.00115	173.13	-
2000	5,262,334	5,304,475	84,281	-	0.01589	-	1997-99	15,565,070	281,454	17,846	0.01808	0.00115	219.62	-
2001	5,346,615	5,346,540	701	852	0.00013	0.00016	1998-00	15,774,664	162,143	6,563	0.01028			

Kentucky Power Company  
Electric Plant In Service  
Geometric Mean Turnover Analysis

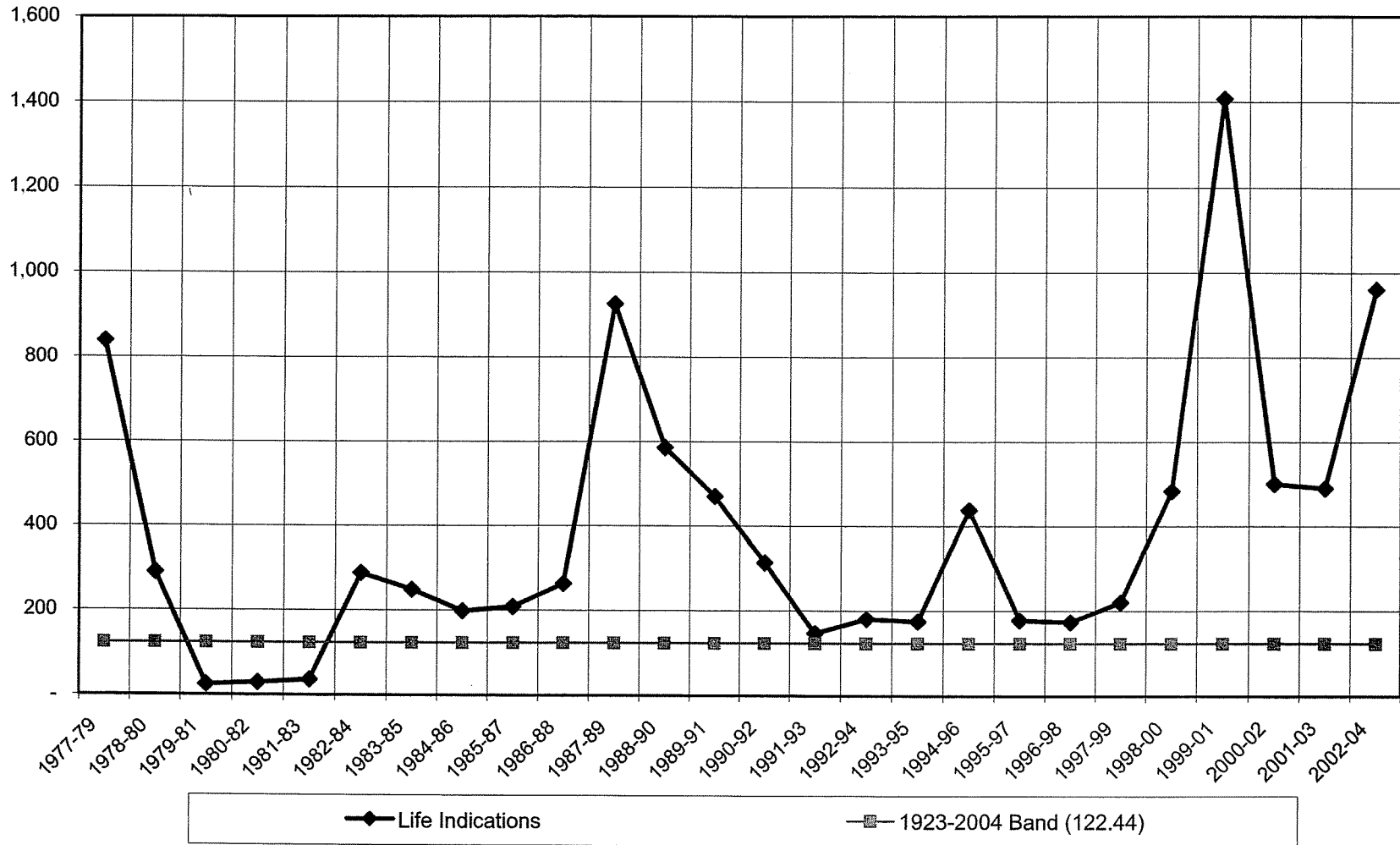
Account 352 - Structures & Improvements

3 Year Band

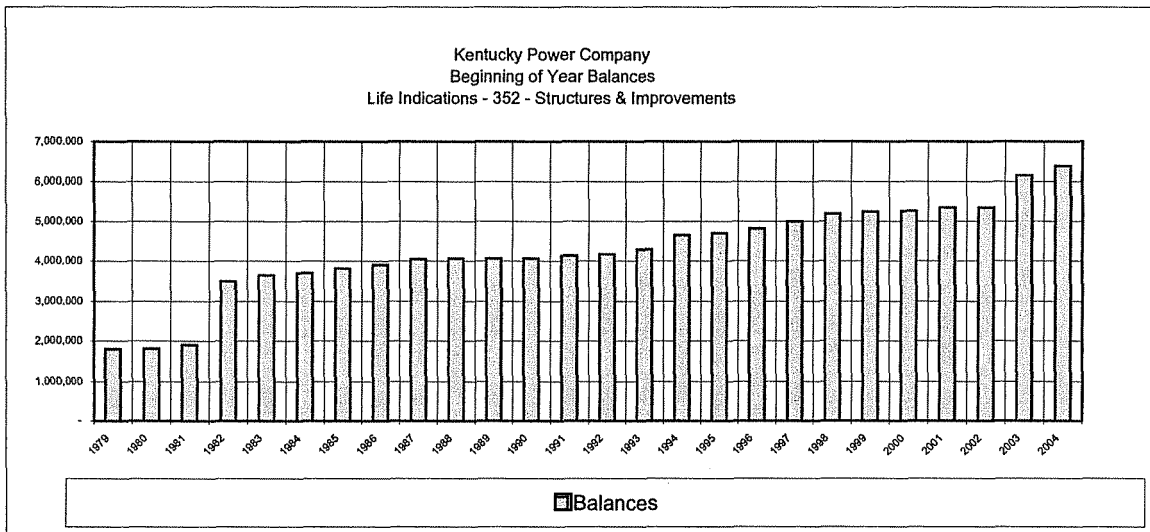
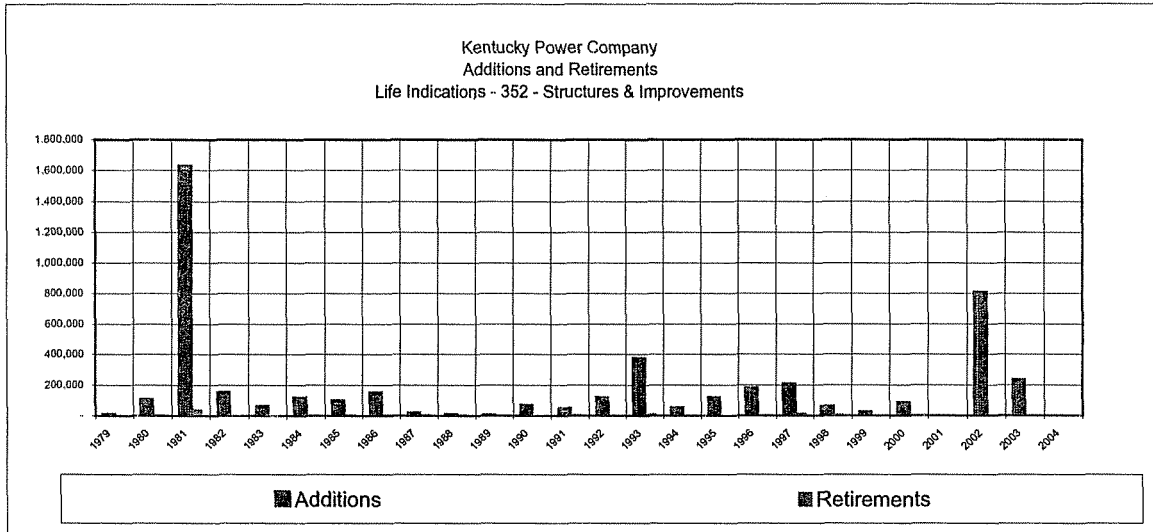
Year	BOY Plant Balance a	Avg. Plant Balance $b = (a + (a+1))/2$	Single Year Additions c	Single Year Retirements d	Addition Ratio e = c/b	Retirement Ratio f = d/b	Geometric Mean Life Estimate g = $1/\sqrt{(e*f)}$	3 Year Band h	Avg. Plant Balance i	Additions j	Retirements k	Addition Ratio l = j/i	Retirement Ratio m = k/i	Geometric Mean Life Estimat n = $1/\sqrt{(l*m)}$
------	---------------------------	--	-------------------------------	---------------------------------	------------------------------	--------------------------------	--	---------------------	----------------------------	----------------	------------------	------------------------------	--------------------------------	---

Data Source:

Kentucky Power Company  
Geometric Mean 3 Year Rolling Band Analysis  
Life Indications - 352 - Structures & Improvements



**Kentucky Power Company  
Electric Plant In Service  
Additions, Retirements and Balances  
Account 352 - Structures & Improvements**



## Kentucky Power Company

### 353 - Station Equipment

#### Company Notes

The actuarial analysis indicate that the current 50 year average service life for this account should be shortened. Based on the analyses, the recommendation is to move to a 40 year average service life following an R1.5 type dispersion.

Scrap sales of substation equipment and reuse salvage are expected from the retirement of investments in this account. However, the cost to the remove the equipment is expected to offset any salvage realized. The recommendation is for a gross salvage of 35% and a gross removal of 35%.

#### Sk Notes

Account analyzed with Actuarial model - Use company recommendation



**Observed Life Table Results**  
**Kentucky Power Company**  
**Account: 353 - Station Equipment**

Age	Exposures	Retirements	Retirement Ratio (%)	Survivor Ratio (%)	Cumulative Survivors
<b>BAND</b>		<b>1916 - 2004</b>			
0	137,200,294	88,272	0.0643	99.9357	1.0000
0.5	134,586,785	162,339	0.1206	99.8794	0.9994
1.5	129,983,587	360,875	0.2776	99.7224	0.9982
2.5	125,197,546	1,088,454	0.8694	99.1306	0.9954
3.5	120,970,436	643,751	0.5322	99.4678	0.9867
4.5	117,841,173	426,983	0.3623	99.6377	0.9815
5.5	115,925,657	351,295	0.3030	99.6970	0.9779
6.5	104,433,206	580,567	0.5559	99.4441	0.9750
7.5	66,961,773	1,007,405	1.5044	98.4956	0.9695
8.5	63,493,651	457,059	0.7198	99.2802	0.9549
9.5	62,182,916	256,687	0.4128	99.5872	0.9481
10.5	59,668,520	1,233,114	2.0666	97.9334	0.9442
11.5	52,650,888	292,124	0.5548	99.4452	0.9246
12.5	50,223,107	233,755	0.4654	99.5346	0.9195
13.5	46,208,259	676,546	1.4641	98.5359	0.9152
14.5	42,525,569	204,730	0.4814	99.5186	0.9018
15.5	41,010,380	335,402	0.8178	99.1822	0.8975
16.5	40,144,063	146,420	0.3647	99.6353	0.8902
17.5	37,825,283	262,774	0.6947	99.3053	0.8869
18.5	37,062,649	479,056	1.2926	98.7074	0.8807
19.5	35,842,693	718,743	2.0053	97.9947	0.8694
20.5	33,901,549	59,628	0.1759	99.8241	0.8519
21.5	32,468,836	655,390	2.0185	97.9815	0.8504
22.5	30,410,318	601,557	1.9781	98.0219	0.8333
23.5	22,577,153	234,172	1.0372	98.9628	0.8168
24.5	16,469,300	347,926	2.1126	97.8874	0.8083
25.5	15,154,957	66,897	0.4414	99.5586	0.7912
26.5	15,033,461	77,951	0.5185	99.4815	0.7877
27.5	12,891,105	312,425	2.4236	97.5764	0.7837
28.5	11,485,861	329,512	2.8688	97.1312	0.7647
29.5	10,392,622	168,720	1.6235	98.3765	0.7427
30.5	9,153,707	52,689	0.5756	99.4244	0.7307
31.5	8,935,899	71,959	0.8053	99.1947	0.7265
32.5	8,694,818	207,042	2.3812	97.6188	0.7206
33.5	8,280,160	168,360	2.0333	97.9667	0.7035
34.5	7,410,905	4,022	0.0543	99.9457	0.6892
35.5	2,130,954	29,635	1.3907	98.6093	0.6888
36.5	2,041,895	25,951	1.2709	98.7291	0.6792
37.5	1,708,083	11,265	0.6595	99.3405	0.6706
38.5	1,690,975	1,131	0.0669	99.9331	0.6661
39.5	1,586,292	22,264	1.4035	98.5965	0.6657
40.5	1,551,818	5,625	0.3625	99.6375	0.6564
41.5	985,232	706	0.0717	99.9283	0.6540
42.5	978,620	163,843	16.7422	83.2578	0.6535
43.5	814,430	117,048	14.3718	85.6282	0.5441
44.5	671,998	254,228	37.8317	62.1683	0.4659

45.5	363,669	287	0.0789	99.9211	0.2896
46.5	362,805	23,804	6.5611	93.4389	0.2894
47.5	330,020	6,012	1.8217	98.1783	0.2704
48.5	324,008	177	0.0546	99.9454	0.2655
49.5	322,934	0	0.0000	100.0000	0.2654
50.5	28,176	54	0.1917	99.8083	0.2654
51.5	20,547	0	0.0000	100.0000	0.2648
52.5	20,547	0	0.0000	100.0000	0.2648
53.5	20,547	0	0.0000	100.0000	0.2648
54.5	20,547	0	0.0000	100.0000	0.2648
55.5	20,547	6,860	33.3869	66.6131	0.2648
56.5	13,687	134	0.9790	99.0210	0.1764
57.5	13,553	0	0.0000	100.0000	0.1747
58.5	13,553	13,553	100.0000	0.0000	0.1747
59.5	0	0	0.0000	100.0000	0.0000
60.5	0	0	0.0000	100.0000	0.0000
61.5	0	0	0.0000	100.0000	0.0000
62.5	0	0	0.0000	100.0000	0.0000
63.5	0	0	0.0000	100.0000	0.0000
64.5	0	0	0.0000	100.0000	0.0000
65.5	0	0	0.0000	100.0000	0.0000
66.5	0	0	0.0000	100.0000	0.0000
67.5	0	0	0.0000	100.0000	0.0000
68.5	0	0	0.0000	100.0000	0.0000
69.5	0	0	0.0000	100.0000	0.0000
70.5	0	0	0.0000	100.0000	0.0000
71.5	0	0	0.0000	100.0000	0.0000
72.5	0	0	0.0000	100.0000	0.0000
73.5	0	0	0.0000	100.0000	0.0000
74.5	0	0	0.0000	100.0000	0.0000
75.5	0	0	0.0000	100.0000	0.0000
76.5	0	0	0.0000	100.0000	0.0000
77.5	0	0	0.0000	100.0000	0.0000
78.5	0	0	0.0000	100.0000	0.0000
79.5	0	0	0.0000	100.0000	0.0000
80.5	0	0	0.0000	100.0000	0.0000
81.5	0	0	0.0000	100.0000	0.0000
82.5	0	0	0.0000	100.0000	0.0000
83.5	0	0	0.0000	100.0000	0.0000
84.5	0	0	0.0000	100.0000	0.0000
85.5	0	0	0.0000	100.0000	0.0000
86.5	0	0	0.0000	100.0000	0.0000
87.5	0	0	0.0000	100.0000	0.0000
<b>BAND</b>		<b>1954 - 2004</b>			
0	135,511,856	88,272	0.0651	99.9349	1.0000
0.5	132,917,821	162,339	0.1221	99.8779	0.9993
1.5	128,618,645	360,875	0.2806	99.7194	0.9981
2.5	123,965,583	1,088,454	0.8780	99.1220	0.9953
3.5	119,781,193	643,751	0.5374	99.4626	0.9866
4.5	116,857,667	426,983	0.3654	99.6346	0.9813
5.5	115,008,022	351,295	0.3055	99.6945	0.9777
6.5	103,521,001	580,567	0.5608	99.4392	0.9747

7.5	66,059,368	1,007,405	1.5250	98.4750	0.9692
8.5	62,646,853	457,059	0.7296	99.2704	0.9545
9.5	61,363,513	256,687	0.4183	99.5817	0.9475
10.5	59,031,988	1,233,114	2.0889	97.9111	0.9435
11.5	52,060,684	292,124	0.5611	99.4389	0.9238
12.5	49,694,407	233,755	0.4704	99.5296	0.9186
13.5	45,754,850	676,546	1.4786	98.5214	0.9143
14.5	42,072,160	204,730	0.4866	99.5134	0.9008
15.5	40,738,951	335,402	0.8233	99.1767	0.8964
16.5	39,873,359	146,420	0.3672	99.6328	0.8890
17.5	37,616,038	262,774	0.6986	99.3014	0.8858
18.5	36,853,404	479,056	1.2999	98.7001	0.8796
19.5	35,634,352	718,743	2.0170	97.9830	0.8682
20.5	33,695,430	59,628	0.1770	99.8230	0.8506
21.5	32,262,717	655,390	2.0314	97.9686	0.8491
22.5	30,204,199	601,557	1.9916	98.0084	0.8319
23.5	22,432,449	234,172	1.0439	98.9561	0.8153
24.5	16,324,596	347,926	2.1313	97.8687	0.8068
25.5	15,010,253	66,897	0.4457	99.5543	0.7896
26.5	14,888,757	77,951	0.5236	99.4764	0.7861
27.5	12,760,117	312,425	2.4484	97.5516	0.7820
28.5	11,377,391	329,512	2.8962	97.1038	0.7628
29.5	10,297,051	168,720	1.6385	98.3615	0.7407
30.5	9,058,136	52,689	0.5817	99.4183	0.7286
31.5	8,932,596	71,959	0.8056	99.1944	0.7244
32.5	8,691,515	207,042	2.3821	97.6179	0.7185
33.5	8,277,563	168,360	2.0339	97.9661	0.7014
34.5	7,408,308	4,022	0.0543	99.9457	0.6871
35.5	2,128,357	29,635	1.3924	98.6076	0.6868
36.5	2,039,298	25,951	1.2725	98.7275	0.6772
37.5	1,708,083	11,265	0.6595	99.3405	0.6686
38.5	1,690,975	1,131	0.0669	99.9331	0.6642
39.5	1,586,292	22,264	1.4035	98.5965	0.6637
40.5	1,551,818	5,625	0.3625	99.6375	0.6544
41.5	985,232	706	0.0717	99.9283	0.6521
42.5	978,620	163,843	16.7422	83.2578	0.6516
43.5	814,430	117,048	14.3718	85.6282	0.5425
44.5	671,998	254,228	37.8317	62.1683	0.4645
45.5	363,669	287	0.0789	99.9211	0.2888
46.5	362,805	23,804	6.5611	93.4389	0.2886
47.5	330,020	6,012	1.8217	98.1783	0.2696
48.5	324,008	177	0.0546	99.9454	0.2647
49.5	322,934	0	0.0000	100.0000	0.2646
50.5	28,176	54	0.1917	99.8083	0.2646
51.5	20,547	0	0.0000	100.0000	0.2641
52.5	20,547	0	0.0000	100.0000	0.2641
53.5	20,547	0	0.0000	100.0000	0.2641
54.5	20,547	0	0.0000	100.0000	0.2641
55.5	20,547	6,860	33.3869	66.6131	0.2641
56.5	13,687	134	0.9790	99.0210	0.1759
57.5	13,553	0	0.0000	100.0000	0.1742
58.5	13,553	13,553	100.0000	0.0000	0.1742

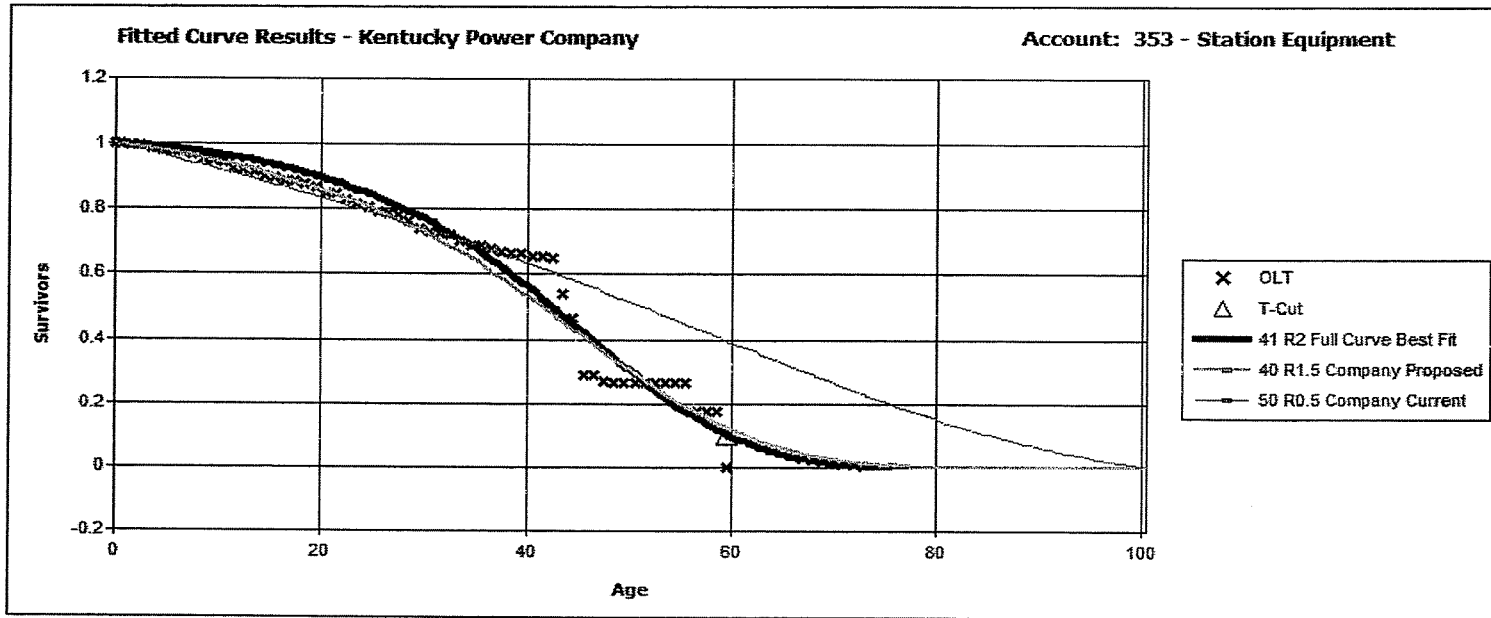
59.5	0	0	0.0000	100.0000	0.0000
------	---	---	--------	----------	--------

**Best Fit Curve Results**  
**Kentucky Power Company**  
**Account: 353 - Station Equipment**

Curve	Life	Sum of Squared Differences
<b>BAND</b>	<b>1954 - 2004</b>	
R2	41.0	1,753.146
R1.5	41.0	1,772.994
S1	42.0	2,292.184
R2.5	42.0	2,371.662
S1.5	42.0	2,448.267
S0.5	42.0	2,509.571
R1	40.0	2,614.119
L2	44.0	3,138.673
S2	42.0	3,176.197
L1.5	44.0	3,191.659
S0	41.0	3,278.712
R3	42.0	3,748.244
L1	44.0	3,933.715
L3	44.0	4,093.026
R0.5	41.0	4,382.844
S-0.5	41.0	4,758.430
L0.5	45.0	4,853.685
S3	43.0	5,506.743
L0	46.0	6,218.644
L4	44.0	6,882.250
O1	41.0	7,094.963
O2	47.0	7,336.022
R4	43.0	7,565.765
S4	43.0	10,061.109
O3	57.0	11,083.252
L5	44.0	11,334.377
R5	43.0	13,587.530
S5	44.0	15,261.398
S6	44.0	19,987.516
O4	57.0	20,165.507
SQ	44.0	31,445.442

**Analytical Parameters**

OLT Placement Band: 1916 - 2004  
 OLT Experience Band: 1954 - 2004  
 Minimum Life Parameter: 4  
 Maximum Life Parameter: 57  
 Life Increment Parameter: 1  
 Max Age (T-Cut): 59.5



**Analytical Parameters**

OLT Placement Band:	1916 - 2004
OLT Experience Band:	1954 - 2004
Minimum Life Parameter:	4
Maximum Life Parameter:	57
Life Increment Parameter:	1
Max Age (T-Cut):	59.5

**SPR Results**  
**Kentucky Power Company**  
**Account: 353 - Station Equipment**

Curve	Life	Sum of Squared Differences	Index of Variation
<b>BAND: 1954 - 2004</b>			
R5	57	1.03E+15	34
S5	57	1.27E+15	38
S6	56	1.53E+15	41
L5	57	1.55E+15	42
SQ	52	2.26E+15	50
S4	57	2.29E+15	51
R4	57	2.42E+15	52
L4	57	4.03E+15	67
S3	57	5.57E+15	79
R3	57	5.82E+15	81
R2.5	57	8.94E+15	100
S2	57	1.04E+16	108
L3	57	1.24E+16	118
R2	57	1.31E+16	121
S1.5	57	1.38E+16	124
S1	57	1.81E+16	142
R1.5	57	1.85E+16	144
S0.5	57	2.29E+16	160
L2	57	2.35E+16	162
R1	57	2.51E+16	168
S0	57	2.88E+16	180
L1.5	57	2.92E+16	181
R0.5	57	3.49E+16	198
L1	57	3.63E+16	201
S-0.5	57	3.69E+16	203
L0.5	57	4.38E+16	221
O1	57	4.66E+16	228
L0	57	5.26E+16	242
O2	57	6.16E+16	262
O3	57	1.11E+17	353
O4	57	1.67E+17	432

Minimum Equipment Life Expectancy: 4  
 Maximum Equipment Life Expectancy: 57  
 Life Expectancy Increment: 1  
 Begin Year: 1954  
 End Year: 2004  
 Year Fit Increment: 0

**Plant Balances**

Year	Balance	Year	Balance	Year	Balance	Year	Balance
2004	123,153,116	2003	123,852,623	2002	124,314,997	2001	124,482,182
2000	124,586,339	1999	124,894,868	1998	125,251,992	1997	125,417,261
1996	126,473,872	1995	126,506,347	1994	126,649,755	1993	127,457,239
1992	127,698,136	1991	129,144,561	1990	129,848,432	1989	129,991,864
1988	130,840,430	1987	131,232,932	1986	131,459,804	1985	131,989,073
1984	132,408,558	1983	132,516,640	1982	132,534,888	1981	132,782,115
1980	133,802,318	1979	134,460,290	1978	134,500,080	1977	134,919,325
1976	135,143,707	1975	135,796,786	1974	135,805,927	1973	135,919,689
1972	136,066,711	1971	136,117,684	1970	136,160,173	1969	136,194,465
1968	136,353,899	1967	136,382,195	1966	136,667,176	1965	136,688,938
1964	136,798,530	1963	136,811,766	1962	136,877,346	1961	136,901,640
1960	136,955,415	1959	136,978,393	1958	137,063,742	1957	137,108,973
1956	137,145,201	1955	137,181,842	1954	137,189,105		

**Simulated Balances**

Curve: R5                      ASL: 57                      SSD: 1.03E+15                      IV: 34

Year	Balance	Year	Balance	Year	Balance	Year	Balance
2004	106,803,761	2003	111,228,707	2002	115,152,156	2001	118,585,967
2000	121,557,448	1999	124,130,074	1998	126,344,415	1997	128,233,939
1996	129,832,154	1995	131,191,980	1994	132,344,092	1993	133,312,991
1992	134,117,168	1991	134,787,254	1990	135,340,270	1989	135,790,022
1988	136,146,377	1987	136,428,802	1986	136,648,489	1985	136,815,681
1984	136,937,729	1983	137,026,774	1982	137,089,829	1981	137,133,066
1980	137,160,737	1979	137,178,342	1978	137,189,029	1977	137,194,979
1976	137,197,954	1975	137,199,413	1974	137,200,058	1973	137,200,294
1972	137,200,294	1971	137,200,294	1970	137,200,294	1969	137,200,294
1968	137,200,294	1967	137,200,294	1966	137,200,294	1965	137,200,294
1964	137,200,294	1963	137,200,294	1962	137,200,294	1961	137,200,294
1960	137,200,294	1959	137,200,294	1958	137,200,294	1957	137,200,294
1956	137,200,294	1955	137,200,294	1954	137,200,294		

Curve: S5                      ASL: 57                      SSD: 1.27E+15                      IV: 38

Year	Balance	Year	Balance	Year	Balance	Year	Balance
2004	108,363,194	2003	113,858,312	2002	118,666,701	2001	122,765,148
2000	126,164,863	1999	128,947,942	1998	131,173,723	1997	132,900,750
1996	134,195,463	1995	135,157,396	1994	135,852,224	1993	136,336,560
1992	136,659,123	1991	136,873,136	1990	137,010,033	1989	137,094,014
1988	137,142,292	1987	137,170,081	1986	137,185,387	1985	137,193,369
1984	137,197,117	1983	137,198,985	1982	137,199,813	1981	137,200,157
1980	137,200,260	1979	137,200,294	1978	137,200,294	1977	137,200,294



1976	137,200,294	1975	137,200,294	1974	137,200,294	1973	137,200,294
1972	137,200,294	1971	137,200,294	1970	137,200,294	1969	137,200,294
1968	137,200,294	1967	137,200,294	1966	137,200,294	1965	137,200,294
1964	137,200,294	1963	137,200,294	1962	137,200,294	1961	137,200,294
1960	137,200,294	1959	137,200,294	1958	137,200,294	1957	137,200,294
1956	137,200,294	1955	137,200,294	1954	137,200,294		

**Curve: S6 ASL: 56 SSD: 1.53E+15 IV: 41**

Year	Balance	Year	Balance	Year	Balance	Year	Balance
2004	117,368,384	2003	123,837,554	2002	128,624,301	2001	131,985,164
2000	134,209,470	1999	135,584,765	1998	136,366,356	1997	136,798,170
1996	137,020,326	1995	137,126,142	1994	137,171,590	1993	137,189,857
1992	137,196,859	1991	137,199,334	1990	137,200,024	1989	137,200,269
1988	137,200,294	1987	137,200,294	1986	137,200,294	1985	137,200,294
1984	137,200,294	1983	137,200,294	1982	137,200,294	1981	137,200,294
1980	137,200,294	1979	137,200,294	1978	137,200,294	1977	137,200,294
1976	137,200,294	1975	137,200,294	1974	137,200,294	1973	137,200,294
1972	137,200,294	1971	137,200,294	1970	137,200,294	1969	137,200,294
1968	137,200,294	1967	137,200,294	1966	137,200,294	1965	137,200,294
1964	137,200,294	1963	137,200,294	1962	137,200,294	1961	137,200,294
1960	137,200,294	1959	137,200,294	1958	137,200,294	1957	137,200,294
1956	137,200,294	1955	137,200,294	1954	137,200,294		

**Curve: L5 ASL: 57 SSD: 1.55E+15 IV: 42**

Year	Balance	Year	Balance	Year	Balance	Year	Balance
2004	100,949,425	2003	106,277,288	2002	111,001,356	2001	115,107,650
2000	118,625,021	1999	121,645,297	1998	124,235,817	1997	126,455,602
1996	128,357,894	1995	130,006,274	1994	131,431,794	1993	132,653,483
1992	133,680,849	1991	134,539,961	1990	135,244,374	1989	135,806,763
1988	136,237,519	1987	136,562,833	1986	136,799,616	1985	136,963,929
1984	137,068,943	1983	137,133,988	1982	137,170,909	1981	137,189,455
1980	137,196,946	1979	137,199,545	1978	137,200,193	1977	137,200,294
1976	137,200,294	1975	137,200,294	1974	137,200,294	1973	137,200,294
1972	137,200,294	1971	137,200,294	1970	137,200,294	1969	137,200,294
1968	137,200,294	1967	137,200,294	1966	137,200,294	1965	137,200,294
1964	137,200,294	1963	137,200,294	1962	137,200,294	1961	137,200,294
1960	137,200,294	1959	137,200,294	1958	137,200,294	1957	137,200,294
1956	137,200,294	1955	137,200,294	1954	137,200,294		

**Curve: SQ ASL: 52 SSD: 2.26E+15 IV: 50**

Year	Balance	Year	Balance	Year	Balance	Year	Balance
2004	137,200,294	2003	137,200,294	2002	137,200,294	2001	137,200,294
2000	137,200,294	1999	137,200,294	1998	137,200,294	1997	137,200,294
1996	137,200,294	1995	137,200,294	1994	137,200,294	1993	137,200,294
1992	137,200,294	1991	137,200,294	1990	137,200,294	1989	137,200,294
1988	137,200,294	1987	137,200,294	1986	137,200,294	1985	137,200,294

1984	137,200,294	1983	137,200,294	1982	137,200,294	1981	137,200,294
1980	137,200,294	1979	137,200,294	1978	137,200,294	1977	137,200,294
1976	137,200,294	1975	137,200,294	1974	137,200,294	1973	137,200,294
1972	137,200,294	1971	137,200,294	1970	137,200,294	1969	137,200,294
1968	137,200,294	1967	137,200,294	1966	137,200,294	1965	137,200,294
1964	137,200,294	1963	137,200,294	1962	137,200,294	1961	137,200,294
1960	137,200,294	1959	137,200,294	1958	137,200,294	1957	137,200,294
1956	137,200,294	1955	137,200,294	1954	137,200,294		

**Curve: S4 ASL: 57 SSD: 2.29E+15 IV: 51**

Year	Balance	Year	Balance	Year	Balance	Year	Balance
2004	96,848,036	2003	101,405,255	2002	105,703,389	2001	109,711,534
2000	113,404,778	1999	116,788,515	1998	119,858,504	1997	122,609,016
1996	125,036,390	1995	127,170,252	1994	129,025,482	1993	130,615,633
1992	131,951,935	1991	133,072,984	1990	134,001,151	1989	134,757,149
1988	135,356,842	1987	135,832,855	1986	136,204,629	1985	136,489,418
1984	136,699,773	1983	136,855,741	1982	136,968,921	1981	137,049,099
1980	137,103,103	1979	137,139,731	1978	137,163,864	1977	137,179,269
1976	137,188,454	1975	137,193,838	1974	137,197,035	1973	137,198,667
1972	137,199,521	1971	137,199,957	1970	137,200,157	1969	137,200,294
1968	137,200,294	1967	137,200,294	1966	137,200,294	1965	137,200,294
1964	137,200,294	1963	137,200,294	1962	137,200,294	1961	137,200,294
1960	137,200,294	1959	137,200,294	1958	137,200,294	1957	137,200,294
1956	137,200,294	1955	137,200,294	1954	137,200,294		

**Curve: R4 ASL: 57 SSD: 2.42E+15 IV: 52**

Year	Balance	Year	Balance	Year	Balance	Year	Balance
2004	98,682,840	2003	101,894,268	2002	104,871,023	2001	107,637,992
2000	110,220,588	1999	112,645,969	1998	114,920,661	1997	117,043,619
1996	119,012,597	1995	120,839,722	1994	122,529,368	1993	124,084,170
1992	125,504,301	1991	126,803,995	1990	127,989,424	1989	129,065,701
1988	130,034,031	1987	130,908,361	1986	131,695,127	1985	132,400,077
1984	133,024,697	1983	133,581,213	1982	134,075,278	1981	134,512,129
1980	134,893,189	1979	135,228,028	1978	135,521,085	1977	135,776,648
1976	135,996,304	1975	136,186,427	1974	136,350,365	1973	136,491,253
1972	136,610,448	1971	136,711,875	1970	136,798,028	1969	136,870,862
1968	136,931,528	1967	136,982,271	1966	137,024,620	1965	137,059,779
1964	137,088,637	1963	137,112,226	1962	137,131,511	1961	137,147,311
1960	137,159,972	1959	137,170,064	1958	137,178,229	1957	137,184,696
1956	137,189,756	1955	137,193,737	1954	137,196,871		

**Curve: L4 ASL: 57 SSD: 4.03E+15 IV: 67**

Year	Balance	Year	Balance	Year	Balance	Year	Balance
2004	89,876,032	2003	94,521,817	2002	98,921,650	2001	103,018,855
2000	106,773,751	1999	110,192,106	1998	113,278,178	1997	116,040,827
1996	118,497,359	1995	120,695,414	1994	122,664,830	1993	124,430,622

1992	126,012,392	1991	127,443,069	1990	128,738,502	1989	129,909,843
1988	130,961,084	1987	131,907,619	1986	132,755,130	1985	133,508,210
1984	134,165,994	1983	134,740,505	1982	135,236,630	1981	135,659,946
1980	136,011,181	1979	136,302,193	1978	136,539,010	1977	136,727,670
1976	136,871,976	1975	136,981,084	1974	137,060,951	1973	137,117,273
1972	137,153,704	1971	137,176,655	1970	137,189,831	1969	137,196,553
1968	137,199,259	1967	137,200,097	1966	137,200,294	1965	137,200,294
1964	137,200,294	1963	137,200,294	1962	137,200,294	1961	137,200,294
1960	137,200,294	1959	137,200,294	1958	137,200,294	1957	137,200,294
1956	137,200,294	1955	137,200,294	1954	137,200,294		

**Curve: S3 ASL: 57 SSD: 5.57E+15 IV: 79**

Year	Balance	Year	Balance	Year	Balance	Year	Balance
2004	88,824,395	2003	92,302,728	2002	95,687,197	2001	98,963,309
2000	102,116,624	1999	105,143,972	1998	108,037,479	1997	110,787,283
1996	113,382,374	1995	115,827,268	1994	118,119,401	1993	120,254,830
1992	122,226,468	1991	124,045,614	1990	125,714,781	1989	127,235,682
1988	128,605,254	1987	129,839,029	1986	130,943,426	1985	131,924,221
1984	132,781,513	1983	133,532,384	1982	134,184,699	1981	134,746,604
1980	135,220,070	1979	135,620,620	1978	135,955,880	1977	136,233,465
1976	136,457,116	1975	136,637,867	1974	136,781,932	1973	136,895,074
1972	136,980,932	1971	137,046,054	1970	137,094,541	1969	137,129,896
1968	137,154,529	1967	137,171,499	1966	137,182,920	1965	137,190,343
1964	137,194,832	1963	137,197,442	1962	137,198,968	1961	137,199,632
1960	137,199,998	1959	137,200,239	1958	137,200,294	1957	137,200,294
1956	137,200,294	1955	137,200,294	1954	137,200,294		

**Curve: R3 ASL: 57 SSD: 5.82E+15 IV: 81**

Year	Balance	Year	Balance	Year	Balance	Year	Balance
2004	92,508,283	2003	95,280,251	2002	97,927,259	2001	100,446,208
2000	102,836,148	1999	105,105,910	1998	107,258,751	1997	109,295,550
1996	111,217,042	1995	113,033,786	1994	114,750,094	1993	116,368,437
1992	117,889,483	1991	119,323,360	1990	120,673,890	1989	121,944,004
1988	123,133,473	1987	124,251,157	1986	125,300,296	1985	126,283,748
1984	127,200,386	1983	128,057,926	1982	128,859,142	1981	129,606,669
1980	130,299,025	1979	130,943,087	1978	131,541,071	1977	132,095,471
1976	132,605,355	1975	133,075,981	1974	133,509,803	1973	133,908,760
1972	134,272,786	1971	134,605,858	1970	134,910,120	1969	135,187,465
1968	135,438,243	1967	135,665,273	1966	135,870,816	1965	136,056,284
1964	136,222,191	1963	136,370,702	1962	136,503,682	1961	136,622,334
1960	136,727,184	1959	136,819,936	1958	136,902,004	1957	136,974,260
1956	137,037,250	1955	137,092,183	1954	137,140,121		

**Curve: R2.5 ASL: 57 SSD: 8.94E+15 IV: 100**

Year	Balance	Year	Balance	Year	Balance	Year	Balance
2004	89,730,860	2003	92,197,529	2002	94,573,419	2001	96,855,662

2000	99,042,697	1999	101,140,490	1998	103,150,337	1997	105,072,301
1996	106,905,603	1995	108,657,698	1994	110,331,015	1993	111,926,693
1992	113,444,155	1991	114,890,850	1990	116,269,219	1989	117,581,095
1988	118,825,316	1987	120,008,953	1986	121,134,209	1985	122,202,812
1984	123,213,511	1983	124,172,575	1982	125,081,943	1981	125,943,559
1980	126,755,926	1979	127,524,551	1978	128,251,304	1977	128,937,782
1976	129,583,201	1975	130,191,850	1974	130,765,552	1973	131,306,035
1972	131,812,532	1971	132,288,627	1970	132,736,203	1969	133,156,503
1968	133,549,425	1967	133,917,596	1966	134,262,814	1965	134,586,154
1964	134,887,860	1963	135,169,686	1962	135,433,337	1961	135,679,727
1960	135,909,174	1959	136,123,021	1958	136,322,754	1957	136,508,992
1956	136,682,370	1955	136,843,590	1954	136,993,764		

**Curve: S2 ASL: 57 SSD: 1.04E+16 IV: 108**

Year	Balance	Year	Balance	Year	Balance	Year	Balance
2004	84,183,713	2003	86,934,550	2002	89,645,445	2001	92,309,335
2000	94,919,142	1999	97,472,613	1998	99,964,818	1997	102,390,026
1996	104,740,950	1995	107,017,832	1994	109,217,377	1993	111,334,984
1992	113,363,878	1991	115,306,947	1990	117,162,335	1989	118,927,562
1988	120,596,384	1987	122,174,139	1986	123,660,813	1985	125,056,010
1984	126,353,990	1983	127,562,739	1982	128,683,706	1981	129,718,488
1980	130,662,522	1979	131,525,348	1978	132,309,739	1977	133,018,610
1976	133,649,991	1975	134,212,902	1974	134,711,346	1973	135,149,308
1972	135,527,223	1971	135,852,588	1970	136,130,582	1969	136,365,069
1968	136,558,238	1967	136,716,256	1966	136,843,978	1965	136,945,258
1964	137,022,516	1963	137,080,677	1962	137,123,325	1961	137,153,518
1960	137,173,468	1959	137,186,088	1958	137,193,622	1957	137,197,680
1956	137,199,492	1955	137,200,104	1954	137,200,294		

**Curve: L3 ASL: 57 SSD: 1.24E+16 IV: 118**

Year	Balance	Year	Balance	Year	Balance	Year	Balance
2004	77,528,731	2003	80,896,052	2002	84,283,773	2001	87,672,755
2000	91,040,353	1999	94,366,174	1998	97,629,979	1997	100,809,738
1996	103,880,567	1995	106,830,330	1994	109,643,887	1993	112,305,452
1992	114,796,490	1991	117,119,743	1990	119,271,573	1989	121,248,882
1988	123,044,321	1987	124,675,113	1986	126,148,411	1985	127,472,543
1984	128,649,575	1983	129,701,930	1982	130,641,215	1981	131,479,042
1980	132,219,957	1979	132,882,025	1978	133,474,078	1977	134,003,696
1976	134,473,575	1975	134,893,466	1974	135,267,857	1973	135,600,093
1972	135,890,501	1971	136,144,297	1970	136,363,873	1969	136,551,727
1968	136,708,116	1967	136,837,103	1966	136,941,455	1965	137,023,777
1964	137,085,587	1963	137,130,466	1962	137,161,649	1961	137,181,736
1960	137,192,885	1959	137,198,147	1958	137,200,027	1957	137,200,294
1956	137,200,294	1955	137,200,294	1954	137,200,294		

**Curve: R2 ASL: 57 SSD: 1.31E+16 IV: 121**

Year	Balance	Year	Balance	Year	Balance	Year	Balance
2004	86,953,575	2003	89,114,862	2002	91,219,580	2001	93,265,116
2000	95,249,475	1999	97,175,127	1998	99,042,035	1997	100,849,052
1996	102,594,257	1995	104,281,688	1994	105,911,935	1993	107,484,819
1992	108,998,786	1991	110,458,414	1990	111,864,657	1989	113,218,186
1988	114,517,357	1987	115,766,886	1986	116,968,122	1985	118,122,011
1984	119,226,774	1983	120,287,361	1982	121,304,882	1981	122,280,722
1980	123,212,895	1979	124,106,016	1978	124,961,436	1977	125,780,230
1976	126,561,078	1975	127,307,655	1974	128,021,339	1973	128,703,172
1972	129,352,249	1971	129,971,533	1970	130,562,286	1969	131,125,549
1968	131,660,745	1967	132,170,057	1966	132,654,906	1965	133,116,152
1964	133,553,529	1963	133,968,693	1962	134,362,946	1961	134,737,132
1960	135,091,186	1959	135,426,188	1958	135,743,600	1957	136,043,970
1956	136,327,491	1955	136,594,913	1954	136,847,631		

Curve: S1.5                      ASL: 57                      SSD: 1.38E+16                      IV: 124

Year	Balance	Year	Balance	Year	Balance	Year	Balance
2004	82,366,040	2003	84,812,206	2002	87,230,669	2001	89,616,481
2000	91,964,625	1999	94,273,384	1998	96,539,302	1997	98,757,994
1996	100,924,190	1995	103,037,866	1994	105,096,381	1993	107,095,972
1992	109,031,639	1991	110,904,799	1990	112,713,955	1989	114,456,531
1988	116,127,251	1987	117,729,680	1986	119,262,985	1985	120,726,060
1984	122,113,779	1983	123,431,323	1982	124,678,760	1981	125,856,574
1980	126,959,861	1979	127,994,840	1978	128,962,897	1977	129,865,140
1976	130,698,134	1975	131,468,333	1974	132,177,786	1973	132,828,563
1972	133,418,801	1971	133,954,207	1970	134,437,918	1969	134,872,243
1968	135,256,741	1967	135,596,651	1966	135,895,158	1965	136,154,888
1964	136,376,813	1963	136,564,724	1962	136,722,425	1961	136,852,378
1960	136,956,034	1959	137,036,855	1958	137,098,174	1957	137,142,316
1956	137,171,518	1955	137,188,928	1954	137,197,413		

Curve: S1                              ASL: 57                              SSD: 1.81E+16                              IV: 142

Year	Balance	Year	Balance	Year	Balance	Year	Balance
2004	80,548,367	2003	82,689,835	2002	84,815,893	2001	86,923,627
2000	89,010,200	1999	91,074,349	1998	93,113,834	1997	95,125,982
1996	97,107,523	1995	99,057,917	1994	100,975,274	1993	102,857,089
1992	104,699,400	1991	106,502,862	1990	108,265,633	1989	109,985,511
1988	111,658,254	1987	113,285,286	1986	114,865,157	1985	116,396,245
1984	117,873,668	1983	119,299,906	1982	120,673,951	1981	121,994,797
1980	123,257,097	1979	124,464,402	1978	125,616,054	1977	126,711,671
1976	127,746,277	1975	128,723,836	1974	129,644,325	1973	130,507,690
1972	131,310,408	1971	132,055,902	1970	132,745,350	1969	133,379,417
1968	133,955,466	1967	134,477,063	1966	134,946,339	1965	135,364,773
1964	135,730,997	1963	136,048,909	1962	136,321,618	1961	136,551,238
1960	136,738,601	1959	136,887,622	1958	137,002,726	1957	137,087,212
1956	137,143,799	1955	137,177,752	1954	137,194,618		

**Curve: R1.5 ASL: 57 SSD: 1.85E+16 IV: 144**

Year	Balance	Year	Balance	Year	Balance	Year	Balance
2004	84,507,096	2003	86,414,106	2002	88,280,829	2001	90,105,111
2000	91,885,415	1999	93,623,502	1998	95,319,175	1997	96,971,213
1996	98,578,361	1995	100,143,132	1994	101,665,892	1993	103,146,322
1992	104,582,922	1991	105,979,060	1990	107,335,292	1989	108,651,873
1988	109,927,521	1987	111,165,816	1986	112,367,383	1985	113,533,065
1984	114,661,571	1983	115,756,261	1982	116,818,201	1981	117,848,467
1980	118,845,362	1979	119,812,658	1978	120,751,221	1977	121,662,057
1976	122,544,193	1975	123,400,385	1974	124,231,752	1973	125,039,127
1972	125,821,819	1971	126,581,968	1970	127,320,626	1969	128,038,391
1968	128,734,612	1967	129,410,776	1966	130,067,662	1965	130,705,473
1964	131,323,688	1963	131,923,441	1962	132,505,300	1961	133,069,862
1960	133,616,449	1959	134,145,857	1958	134,659,075	1957	135,156,313
1956	135,637,087	1955	136,102,191	1954	136,552,391		

**Curve: S0.5 ASL: 57 SSD: 2.29E+16 IV: 160**

Year	Balance	Year	Balance	Year	Balance	Year	Balance
2004	79,163,116	2003	81,063,672	2002	82,953,984	2001	84,832,280
2000	86,696,454	1999	88,545,885	1998	90,379,050	1997	92,193,981
1996	93,988,455	1995	95,762,370	1994	97,514,067	1993	99,241,861
1992	100,943,241	1991	102,618,324	1990	104,265,883	1989	105,884,353
1988	107,470,747	1987	109,025,636	1986	110,548,191	1985	112,036,954
1984	113,488,422	1983	114,904,091	1982	116,282,954	1981	117,624,282
1980	118,923,629	1979	120,183,505	1978	121,403,009	1977	122,581,381
1976	123,714,742	1975	124,805,338	1974	125,852,701	1973	126,856,506
1972	127,813,021	1971	128,724,361	1970	129,590,781	1969	130,411,847
1968	131,184,487	1967	131,910,585	1966	132,590,891	1965	133,225,115
1964	133,810,831	1963	134,349,611	1962	134,842,644	1961	135,290,078
1960	135,689,567	1959	136,042,398	1958	136,350,129	1957	136,612,773
1956	136,828,221	1955	136,996,258	1954	137,117,216		

**Curve: L2 ASL: 57 SSD: 2.35E+16 IV: 162**

Year	Balance	Year	Balance	Year	Balance	Year	Balance
2004	72,857,118	2003	75,190,245	2002	77,555,239	2001	79,948,956
2000	82,367,007	1999	84,803,003	1998	87,251,834	1997	89,707,423
1996	92,162,861	1995	94,611,007	1994	97,044,466	1993	99,455,446
1992	101,833,645	1991	104,172,626	1990	106,464,106	1989	108,699,460
1988	110,865,701	1987	112,959,334	1986	114,972,833	1985	116,898,807
1984	118,724,050	1983	120,450,056	1982	122,072,484	1981	123,588,378
1980	124,987,318	1979	126,277,860	1978	127,461,536	1977	128,541,552
1976	129,515,520	1975	130,397,470	1974	131,195,682	1973	131,919,123
1972	132,573,026	1971	133,171,297	1970	133,721,484	1969	134,226,860
1968	134,685,326	1967	135,099,640	1966	135,471,404	1965	135,801,677
1964	136,089,287	1963	136,337,492	1962	136,548,821	1961	136,725,169
1960	136,867,424	1959	136,978,901	1958	137,063,472	1957	137,124,213
1956	137,163,671	1955	137,186,350	1954	137,197,066		

<b>Curve: R1</b>		<b>ASL: 57</b>		<b>SSD: 2.51E+16</b>		<b>IV: 168</b>	
<b>Year</b>	<b>Balance</b>	<b>Year</b>	<b>Balance</b>	<b>Year</b>	<b>Balance</b>	<b>Year</b>	<b>Balance</b>
2004	82,060,755	2003	83,713,431	2002	85,341,962	2001	86,945,107
2000	88,521,447	1999	90,072,015	1998	91,596,339	1997	93,093,639
1996	94,562,602	1995	96,004,714	1994	97,419,959	1993	98,807,695
1992	100,167,017	1991	101,499,644	1990	102,805,899	1989	104,085,556
1988	105,337,882	1987	106,564,739	1986	107,766,749	1985	108,944,389
1984	110,096,304	1983	111,225,161	1982	112,331,624	1981	113,416,211
1980	114,477,932	1979	115,519,367	1978	116,541,143	1977	117,544,019
1976	118,527,308	1975	119,493,116	1974	120,442,164	1973	121,375,083
1972	122,291,280	1971	123,192,479	1970	124,079,021	1969	124,951,362
1968	125,808,700	1967	126,651,710	1966	127,480,419	1965	128,294,912
1964	129,093,935	1963	129,878,131	1962	130,647,654	1961	131,402,467
1960	132,141,712	1959	132,865,607	1958	133,574,550	1957	134,268,533
1956	134,946,801	1955	135,609,522	1954	136,257,150		

<b>Curve: S0</b>		<b>ASL: 57</b>		<b>SSD: 2.88E+16</b>		<b>IV: 180</b>	
<b>Year</b>	<b>Balance</b>	<b>Year</b>	<b>Balance</b>	<b>Year</b>	<b>Balance</b>	<b>Year</b>	<b>Balance</b>
2004	77,778,002	2003	79,437,509	2002	81,092,075	2001	82,740,808
2000	84,382,846	1999	86,017,479	1998	87,644,241	1997	89,261,970
1996	90,869,524	1995	92,466,764	1994	94,052,860	1993	95,626,764
1992	97,187,123	1991	98,733,862	1990	100,266,271	1989	101,783,333
1988	103,283,142	1987	104,766,058	1986	106,231,225	1985	107,677,797
1984	109,103,313	1983	110,508,345	1982	111,892,198	1981	113,253,766
1980	114,590,263	1979	115,902,676	1978	117,189,999	1977	118,451,231
1976	119,683,271	1975	120,886,847	1974	122,061,313	1973	123,205,327
1972	124,315,663	1971	125,392,894	1970	126,436,267	1969	127,444,407
1968	128,413,619	1967	129,344,184	1966	130,235,350	1965	131,085,585
1964	131,890,777	1963	132,650,451	1962	133,363,808	1961	134,028,806
1960	134,640,555	1959	135,197,256	1958	135,697,621	1957	136,138,486
1956	136,512,564	1955	136,814,817	1954	137,039,900		

<b>Curve: L1.5</b>		<b>ASL: 57</b>		<b>SSD: 2.92E+16</b>		<b>IV: 181</b>	
<b>Year</b>	<b>Balance</b>	<b>Year</b>	<b>Balance</b>	<b>Year</b>	<b>Balance</b>	<b>Year</b>	<b>Balance</b>
2004	72,268,522	2003	74,280,227	2002	76,313,598	2001	78,367,000
2000	80,437,788	1999	82,522,366	1998	84,617,675	1997	86,720,792
1996	88,827,485	1995	90,934,018	1994	93,036,241	1993	95,129,860
1992	97,209,607	1991	99,271,716	1990	101,311,557	1989	103,324,670
1988	105,304,044	1987	107,247,578	1986	109,150,938	1985	111,008,553
1984	112,810,306	1983	114,554,160	1982	116,235,186	1981	117,849,565
1980	119,387,351	1979	120,851,923	1978	122,241,620	1977	123,555,766
1976	124,789,317	1975	125,949,047	1974	127,037,688	1973	128,058,381
1972	129,010,346	1971	129,901,289	1970	130,734,783	1969	131,511,999
1968	132,229,638	1967	132,890,573	1966	133,496,522	1965	134,048,498
1964	134,544,758	1963	134,988,885	1962	135,384,174	1961	135,732,715

1960	136,034,691	1959	136,294,397	1958	136,515,881	1957	136,702,387
1956	136,856,128	1955	136,981,498	1954	137,083,219		

**Curve: R0.5 ASL: 57 SSD: 3.49E+16 IV: 198**

Year	Balance	Year	Balance	Year	Balance	Year	Balance
2004	78,640,152	2003	80,068,188	2002	81,484,222	2001	82,887,488
2000	84,277,476	1999	85,654,447	1998	87,018,377	1997	88,368,839
1996	89,705,076	1995	91,027,858	1994	92,337,211	1993	93,632,954
1992	94,914,355	1991	96,182,444	1990	97,437,244	1989	98,678,907
1988	99,906,712	1987	101,121,946	1986	102,324,759	1985	103,515,215
1984	104,692,995	1983	105,859,178	1982	107,014,150	1981	108,158,147
1980	109,290,815	1979	110,413,340	1978	111,525,967	1977	112,629,074
1976	113,722,527	1975	114,807,235	1974	115,883,463	1973	116,951,695
1972	118,011,483	1971	119,063,869	1970	120,108,885	1969	121,146,856
1968	122,177,216	1967	123,200,544	1966	124,216,655	1965	125,225,657
1964	126,226,981	1963	127,220,807	1962	128,207,318	1961	129,186,526
1960	130,157,846	1959	131,121,498	1958	132,077,786	1957	133,026,444
1956	133,967,393	1955	134,900,492	1954	135,826,089		

**Curve: L1 ASL: 57 SSD: 3.63E+16 IV: 201**

Year	Balance	Year	Balance	Year	Balance	Year	Balance
2004	71,679,925	2003	73,370,291	2002	75,072,094	2001	76,785,057
2000	78,508,706	1999	80,241,787	1998	81,983,766	1997	83,734,042
1996	85,492,247	1995	87,257,105	1994	89,028,043	1993	90,804,412
1992	92,585,666	1991	94,370,806	1990	96,159,115	1989	97,949,880
1988	99,742,426	1987	101,535,886	1986	103,329,150	1985	105,118,299
1984	106,896,461	1983	108,658,264	1982	110,398,026	1981	112,110,613
1980	113,787,487	1979	115,425,986	1978	117,021,741	1977	118,570,119
1976	120,063,282	1975	121,500,760	1974	122,879,830	1973	124,197,776
1972	125,447,695	1971	126,631,269	1970	127,748,123	1969	128,797,267
1968	129,774,061	1967	130,681,643	1966	131,521,776	1965	132,295,328
1964	133,000,140	1963	133,640,416	1962	134,219,618	1961	134,740,136
1960	135,202,073	1959	135,609,892	1958	135,968,291	1957	136,280,807
1956	136,548,703	1955	136,776,562	1954	136,969,335		

**Curve: S-0.5 ASL: 57 SSD: 3.69E+16 IV: 203**

Year	Balance	Year	Balance	Year	Balance	Year	Balance
2004	76,498,799	2003	77,930,268	2002	79,359,279	2001	80,785,401
2000	82,208,175	1999	83,627,247	1998	85,042,384	1997	86,452,941
1996	87,858,584	1995	89,258,874	1994	90,653,703	1993	92,042,420
1992	93,424,311	1991	94,799,516	1990	96,167,499	1989	97,527,731
1988	98,879,421	1987	100,222,569	1986	101,556,960	1985	102,881,920
1984	104,196,467	1983	105,500,806	1982	106,794,420	1981	108,076,925
1980	109,346,998	1979	110,604,994	1978	111,850,359	1977	113,082,680
1976	114,300,508	1975	115,504,032	1974	116,692,988	1973	117,866,751
1972	119,023,782	1971	120,164,114	1970	121,287,460	1969	122,393,313



1968	123,479,675	1967	124,546,713	1966	125,594,146	1965	126,620,989
1964	127,625,333	1963	128,606,898	1962	129,565,372	1961	130,499,615
1960	131,407,120	1959	132,287,363	1958	133,139,233	1957	133,961,428
1956	134,750,284	1955	135,503,097	1954	136,217,463		

**Curve: L0.5 ASL: 57 SSD: 4.38E+16 IV: 221**

Year	Balance	Year	Balance	Year	Balance	Year	Balance
2004	70,298,776	2003	71,837,761	2002	73,387,239	2001	74,946,854
2000	76,516,421	1999	78,094,855	1998	79,681,637	1997	81,276,419
1996	82,878,856	1995	84,487,963	1994	86,103,253	1993	87,724,258
1992	89,350,548	1991	90,981,282	1990	92,615,903	1989	94,253,870
1988	95,894,721	1987	97,537,581	1986	99,181,811	1985	100,825,239
1984	102,464,133	1983	104,095,608	1982	105,716,615	1981	107,324,381
1980	108,914,205	1979	110,484,357	1978	112,031,716	1977	113,553,441
1976	115,044,081	1975	116,503,117	1974	117,928,192	1973	119,317,064
1972	120,665,189	1971	121,972,385	1970	123,237,897	1969	124,460,084
1968	125,634,918	1967	126,763,179	1966	127,844,830	1965	128,879,178
1964	129,862,577	1963	130,795,849	1962	131,679,720	1961	132,513,472
1960	133,293,472	1959	134,019,902	1958	134,692,634	1957	135,309,595
1956	135,864,769	1955	136,353,246	1954	136,767,839		

**Curve: O1 ASL: 57 SSD: 4.66E+16 IV: 228**

Year	Balance	Year	Balance	Year	Balance	Year	Balance
2004	75,219,459	2003	76,422,971	2002	77,626,482	2001	78,829,993
2000	80,033,505	1999	81,237,016	1998	82,440,528	1997	83,644,039
1996	84,847,550	1995	86,051,062	1994	87,254,573	1993	88,458,084
1992	89,661,596	1991	90,865,107	1990	92,068,618	1989	93,272,130
1988	94,475,641	1987	95,679,152	1986	96,882,664	1985	98,086,175
1984	99,289,686	1983	100,493,198	1982	101,696,709	1981	102,900,221
1980	104,103,732	1979	105,307,243	1978	106,510,755	1977	107,714,266
1976	108,917,777	1975	110,121,289	1974	111,324,800	1973	112,528,311
1972	113,731,823	1971	114,935,334	1970	116,138,845	1969	117,342,357
1968	118,545,868	1967	119,749,379	1966	120,952,891	1965	122,156,402
1964	123,359,913	1963	124,563,425	1962	125,766,936	1961	126,970,448
1960	128,173,959	1959	129,377,470	1958	130,580,982	1957	131,784,493
1956	132,988,004	1955	134,191,516	1954	135,395,027		

**Curve: L0 ASL: 57 SSD: 5.26E+16 IV: 242**

Year	Balance	Year	Balance	Year	Balance	Year	Balance
2004	68,917,576	2003	70,305,287	2002	71,702,361	2001	73,108,765
2000	74,524,227	1999	75,947,923	1998	77,379,507	1997	78,818,796
1996	80,265,551	1995	81,718,880	1994	83,178,574	1993	84,644,104
1992	86,115,471	1991	87,591,896	1990	89,072,749	1989	90,557,870
1988	92,047,015	1987	93,539,341	1986	95,034,578	1985	96,532,180
1984	98,031,805	1983	99,533,020	1982	101,035,170	1981	102,538,012
1980	104,040,990	1979	105,542,725	1978	107,041,792	1977	108,536,630

1976	110,025,017	1975	111,505,481	1974	112,976,554	1973	114,436,483
1972	115,882,683	1971	117,313,576	1970	118,727,630	1969	120,122,908
1968	121,495,802	1967	122,844,852	1966	124,168,115	1965	125,463,018
1964	126,724,876	1963	127,951,341	1962	129,140,005	1961	130,286,795
1960	131,385,081	1959	132,430,020	1958	133,416,977	1957	134,338,520
1956	135,180,973	1955	135,929,899	1954	136,566,378		

Curve: O2 ASL: 57 SSD: 6.16E+16 IV: 262

Year	Balance	Year	Balance	Year	Balance	Year	Balance
2004	67,560,520	2003	68,903,194	2002	70,247,915	2001	71,594,298
2000	72,942,216	1999	74,291,331	1998	75,641,319	1997	76,992,155
1996	78,343,541	1995	79,695,402	1994	81,047,694	1993	82,400,330
1992	83,753,173	1991	85,106,161	1990	86,459,177	1989	87,812,405
1988	89,165,633	1987	90,518,999	1986	91,872,258	1985	93,225,592
1984	94,578,958	1983	95,932,323	1982	97,285,722	1981	98,639,054
1980	99,992,419	1979	101,345,784	1978	102,699,186	1977	104,052,518
1976	105,405,881	1975	106,759,246	1974	108,112,611	1973	109,465,981
1972	110,819,342	1971	112,172,707	1970	113,526,073	1969	114,879,445
1968	116,232,803	1967	117,586,169	1966	118,939,534	1965	120,292,900
1964	121,646,241	1963	122,999,493	1962	124,352,858	1961	125,706,075
1960	127,059,178	1959	128,412,187	1958	129,765,126	1957	131,117,721
1956	132,470,227	1955	133,822,290	1954	135,173,889		

Curve: O3 ASL: 57 SSD: 1.11E+17 IV: 353

Year	Balance	Year	Balance	Year	Balance	Year	Balance
2004	54,308,948	2003	55,334,214	2002	56,383,053	2001	57,456,508
2000	58,555,439	1999	59,679,095	1998	60,827,798	1997	62,002,392
1996	63,204,009	1995	64,431,492	1994	65,685,014	1993	66,965,073
1992	68,273,254	1991	69,607,787	1990	70,968,679	1989	72,356,243
1988	73,771,946	1987	75,213,736	1986	76,681,545	1985	78,175,170
1984	79,696,033	1983	81,241,878	1982	82,812,463	1981	84,407,130
1980	86,027,316	1979	87,670,617	1978	89,336,339	1977	91,023,925
1976	92,734,220	1975	94,464,980	1974	96,215,391	1973	97,984,755
1972	99,773,498	1971	101,579,677	1970	103,402,393	1969	105,240,807
1968	107,095,091	1967	108,963,542	1966	110,845,345	1965	112,739,532
1964	114,646,174	1963	116,564,005	1962	118,491,936	1961	120,429,424
1960	122,376,243	1959	124,331,325	1958	126,294,019	1957	128,263,681
1956	130,239,931	1955	132,222,217	1954	134,209,855		

Curve: O4 ASL: 57 SSD: 1.67E+17 IV: 432

Year	Balance	Year	Balance	Year	Balance	Year	Balance
2004	45,116,155	2003	45,872,124	2002	46,651,544	2001	47,456,501
2000	48,288,650	1999	49,147,846	1998	50,035,154	1997	50,952,636
1996	51,902,705	1995	52,885,001	1994	53,900,765	1993	54,952,018
1992	56,041,867	1991	57,169,887	1990	58,337,081	1989	59,545,647
1988	60,799,605	1987	62,097,546	1986	63,440,862	1985	64,831,361

1984	66,273,606	1983	67,765,721	1982	69,308,616	1981	70,903,466
1980	72,555,863	1979	74,262,150	1978	76,023,058	1977	77,839,171
1976	79,715,061	1975	81,646,884	1974	83,634,047	1973	85,676,389
1972	87,776,878	1971	89,931,514	1970	92,138,350	1969	94,396,185
1968	96,706,532	1967	99,064,928	1966	101,468,557	1965	103,915,339
1964	106,405,320	1963	108,934,282	1962	111,499,020	1961	114,096,946
1960	116,727,244	1959	119,386,299	1958	122,070,996	1957	124,778,916
1956	127,508,846	1955	130,258,171	1954	133,024,126		

Kentucky Power Company  
Electric Plant In Service  
Geometric Mean Turnover Analysis

Account 353 - Station Equipment

3 Year Band

Year	BOY Plant Balance a	Avg. Plant Balance b=(a*(n+1))/2	Single Year Additions c	Single Year Retirements d	Addition Ratio e = c/b	Retirement Ratio f = d/b	Geometric Mean Life Estimate g = 1/sqrt(e*f)	3 Year Band h	Avg. Plant Balance i	Additions j	Retirements k	Addition Ratio l = j/i	Retirement Ratio m = k/i	Geometric Mean Life Estimate n = 1/sqrt(l*m)
1916	-	1,299	2,597	-	2.00000	-	-	-	-	-	-	-	-	-
1917	2,597	2,597	-	-	-	-	-	-	-	-	-	-	-	-
1918	2,597	2,597	-	-	-	-	-	1916-18	6,493	2,597	-	0.40000	-	-
1919	2,597	2,597	-	-	-	-	-	1917-19	7,791	-	-	-	-	-
1920	2,597	2,950	706	-	0.23932	-	-	1918-20	8,144	706	-	0.08669	-	-
1921	3,303	3,303	-	-	-	-	-	1919-21	8,850	706	-	0.07977	-	-
1922	3,303	49,437	92,268	-	1.86638	-	-	1920-22	55,690	92,974	-	1.66949	-	-
1923	95,571	95,571	-	-	-	-	-	1921-23	148,311	92,268	-	0.62213	-	-
1924	95,571	102,021	12,899	-	0.12644	-	-	1922-24	247,029	105,167	-	0.42573	-	-
1925	108,470	119,729	22,518	-	0.18807	-	-	1923-25	317,321	35,417	-	0.11161	-	-
1926	130,988	137,846	13,716	-	0.09950	-	-	1924-26	359,596	49,133	-	0.13663	-	-
1927	144,704	144,704	-	-	-	-	-	1925-27	402,279	36,234	-	0.09007	-	-
1928	144,704	144,704	-	-	-	-	-	1926-28	427,254	13,716	-	0.03210	-	-
1929	144,704	144,704	-	-	-	-	-	1927-29	434,112	-	-	-	-	-
1930	144,704	175,412	61,415	-	0.35012	-	-	1928-30	464,820	61,415	-	0.13213	-	-
1931	206,119	206,119	-	-	-	-	-	1929-31	526,235	61,415	-	0.11671	-	-
1932	206,119	206,119	-	-	-	-	-	1930-32	587,650	61,415	-	0.10451	-	-
1933	206,119	207,230	2,222	-	0.01072	-	-	1931-33	619,468	2,222	-	0.00359	-	-
1934	208,341	208,793	904	-	0.00433	-	-	1932-34	622,142	3,126	-	0.00502	-	-
1935	209,245	209,245	-	-	-	-	-	1933-35	625,268	3,126	-	0.00500	-	-
1936	209,245	239,975	61,459	-	0.25611	-	-	1934-36	658,013	62,363	-	0.09477	-	-
1937	270,704	271,067	725	-	0.00267	-	-	1935-37	720,286	62,184	-	0.08633	-	-
1938	271,429	362,419	181,980	-	0.50213	-	-	1936-38	873,460	244,164	-	0.27954	-	-
1939	453,409	453,409	-	-	-	-	-	1937-39	1,086,895	182,705	-	0.16810	-	-
1940	453,409	491,055	75,291	-	0.15333	-	-	1938-40	1,306,883	257,271	-	0.19686	-	-
1941	528,700	559,452	61,504	-	0.10994	-	-	1939-41	1,503,916	136,795	-	0.09096	-	-
1942	590,204	613,368	46,328	-	0.07553	-	-	1940-42	1,663,875	183,123	-	0.11006	-	-
1943	636,532	727,968	182,871	-	0.25121	-	-	1941-43	1,900,788	290,703	-	0.15294	-	-
1944	819,403	833,101	27,395	-	0.03288	-	-	1942-44	2,174,436	256,594	-	0.11800	-	-
1945	846,798	874,602	55,607	-	0.06358	-	-	1943-45	2,435,670	265,873	-	0.10916	-	-
1946	902,405	907,305	9,800	-	0.01080	-	-	1944-46	2,615,007	92,802	-	0.03549	-	-
1947	912,205	914,920	5,430	-	0.00593	-	-	1945-47	2,696,827	70,837	-	0.02627	-	-
1948	917,635	950,571	65,871	-	0.06930	-	-	1946-48	2,772,796	81,101	-	0.02925	-	-
1949	983,506	1,086,375	205,737	-	0.18938	-	-	1947-49	2,951,865	277,038	-	0.09385	-	-
1950	1,189,243	1,210,603	42,720	-	0.03529	-	-	1948-50	3,247,548	314,328	-	0.09679	-	-
1951	1,231,963	1,298,453	132,979	-	0.10241	-	-	1949-51	3,595,430	381,436	-	0.10609	-	-
1952	1,364,942	1,516,953	304,022	-	0.20042	-	-	1950-52	4,026,009	479,721	-	0.11916	-	-
1953	1,668,964	1,678,701	19,474	-	0.01160	-	-	1951-53	4,494,107	456,475	-	0.10157	-	-
1954	1,688,438	1,890,390	415,093	11,189	0.21958	0.00592	27.74	1952-54	5,086,044	738,589	11,189	0.14522	0.00220	55.95
1955	2,092,342	2,101,858	26,294	7,263	0.01251	0.00346	152.10	1953-55	5,670,949	460,861	18,452	0.08127	0.00325	61.50
1956	2,111,373	2,143,036	99,966	36,641	0.04665	0.01710	35.41	1954-56	6,135,283	541,353	55,093	0.08824	0.00698	35.53
1957	2,174,698	2,177,861	42,553	36,228	0.01954	0.01663	55.47	1955-57	6,422,754	168,813	80,132	0.02628	0.01248	55.22
1958	2,181,023	2,245,179	173,543	45,231	0.07730	0.02015	25.34	1956-58	6,566,075	316,062	118,100	0.04814	0.01799	33.99
1959	2,309,335	2,384,527	235,372	85,349	0.09886	0.03579	16.81	1957-59	6,807,566	451,828	166,808	0.06637	0.02450	24.80
1960	2,459,718	2,469,738	43,017	22,978	0.01742	0.00930	78.56	1958-60	7,099,443	452,292	153,558	0.06371	0.02163	26.94
1961	2,479,757	2,486,966	68,192	53,775	0.02742	0.02162	41.07	1959-61	7,341,230	346,941	162,102	0.04726	0.02208	30.96
1962	2,494,174	2,506,976	49,898	24,294	0.01990	0.00969	72.00	1960-62	7,463,679	161,107	101,047	0.02159	0.01354	58.50
1963	2,519,778	2,850,016	726,055	65,580	0.25475	0.02301	13.06	1961-63	7,843,957	844,145	143,649	0.10762	0.01831	22.63
1964	3,180,253	3,226,339	105,408	13,236	0.03267	0.00410	86.38	1962-64	8,583,331	881,361	103,110	0.10268	0.01201	28.47
1965	3,272,425	3,402,969	370,679	109,592	0.10893	0.03220	16.88	1963-65	9,479,323	1,202,142	188,408	0.12682	0.01989	19.92
1966	3,533,512	3,645,233	245,203	21,762	0.06727	0.00597	49.90	1964-66	10,274,540	721,290	144,590	0.07020	0.01407	31.82
1967	3,756,953	3,815,760	402,575	284,981	0.10550	0.07469	11.27	1965-67	10,863,951	1,018,457	416,335	0.09375	0.03332	16.88
1968	3,874,547	3,951,259	181,719	28,296	0.04599	0.00716	55.10	1966-68	11,412,241	829,497	335,039	0.07268	0.02366	21.65
1969	4,027,970	4,031,977	8,167,447	159,434	0.10687	0.01985	7.04	1967-69	15,798,985	8,751,741	472,711	0.55394	0.02992	7.77
1970	12,035,983	12,399,279	760,883	34,292	0.06137	0.00277	76.76	1968-70	24,382,514	9,110,049	222,022	0.37363	0.00911	17.14
1971	12,762,574	12,898,719	314,778	42,489	0.02440	0.00329	111.53	1969-71	33,329,974	9,243,108	236,215	0.27732	0.00709	22.56
1972	13,034,863	13,130,113	241,472	50,973	0.01839	0.00388	118.35	1970-72	38,428,110	1,317,133	127,754	0.03428	0.00332	93.68
1973	13,225,362	13,566,230	828,758	147,022	0.06109	0.01084	38.86	1971-73	39,595,061	1,385,008	240,484	0.03498	0.00607	68.61
1974	13,907,098	14,512,774	1,325,113	113,762	0.09131	0.00784	37.38	1972-74	41,209,116	2,395,343	311,757	0.05813	0.00757	47.69
1975	15,118,449	15,635,929	1,044,100	9,141	0.06678	0.00058	160.05	1973-75	43,714,932	3,197,971	269,925	0.07316	0.00617	47.05
1976	16,153,408	16,413,695	1,173,652	653,079	0.07150	0.03979	18.75	1974-76	46,562,397	3,542,865	775,982	0.07609	0.01667	28.08
1977	16,673,981	17,710,408	2,297,235	224,382	0.12971	0.01267	24.67	1975-77	49,760,031	4,514,987	886,602	0.09074	0.01782	24.87
1978	18,746,834	18,893,222	712,020	419,245	0.03769	0.02219	34.58	1976-78	53,017,324	4,182,907	1,296,706	0.07890	0.02446	22.76
1979	19,038,609	19,553,288	1,067,147	39,790	0.05458	0.00203	94.89	1977-79	56,156,917	4,076,402	683,417	0.07259	0.01217	33.65
1980	20,068,966	22,788,612	6,101,264	657,872	0.26773	0.02887	11.37	1978-80	61,235,121	7,880,431	1,117,007	0.12869	0.01824	20.64
1981	25,510,258	29,583,679	9,167,044	1,020,203	0.30987	0.03449	9.67	1979-81	71,925,578	16,335,455	1,717,965	0.22712	0.02389	13.58
1982	33,657,099	34,262,625	1,458,279	247,227	0.04256	0.00722	57.06	1980-82	86,634,916	16,726,687	1,925,402	0.19307	0.02222	15.27
1983	34,868,151	35,879,414	2,040,773	18,248	0.05888	0.00051	185.93	1981-83	99,725,717	12,666,096	1,285,678	0.12701	0.01289	24.71
1984	36,890,676	37,652,083	1,630,895	108,082	0.04331	0.00287	89.88	1982-84	107,794,121	5,129,947	373,557	0.04759	0.00347	77.87
1985	38,413,489	38,592,317	777,140	419,485	0.02014	0.01087	67.59	1983-85	112,123,813	4,448,808	545,815	0.03968	0.00487	71.95
1986	38,771,144	38,789,792	526,565	529,269	0.01358	0.01365	73.44	1984-86	116,014,191	2,934,600	1,056,836	0.02552	0.00919	65.31
1987	38,768,440	39,883,587	2,417,166	226,872	0.06064	0.00569	53.83	1985-87	117,225,696	3,720,871	1,175,626	0.03174	0.01003	56.05
1988	40,958,734	41,077,526	630,086	392,502	0.01534	0.00956	82.60	1986-88	119,710,905	3,573,817	1,148,643	0.02985	0.00960	59.08
1989	41,196,318	41,504,682	1,465,294	848,566	0.03530	0.02045	37.22	1987-89	122,445,795	4,512,546	1,467,940	0.03685	0.01199	47.58
1990	41,813,046	43,512,083	3,541,506	143,432	0.08139	0.00330	61.05	1988-90	126,094,291	5,636,886	1,38			

Kentucky Power Company  
Electric Plant In Service  
Geometric Mean Turnover Analysis

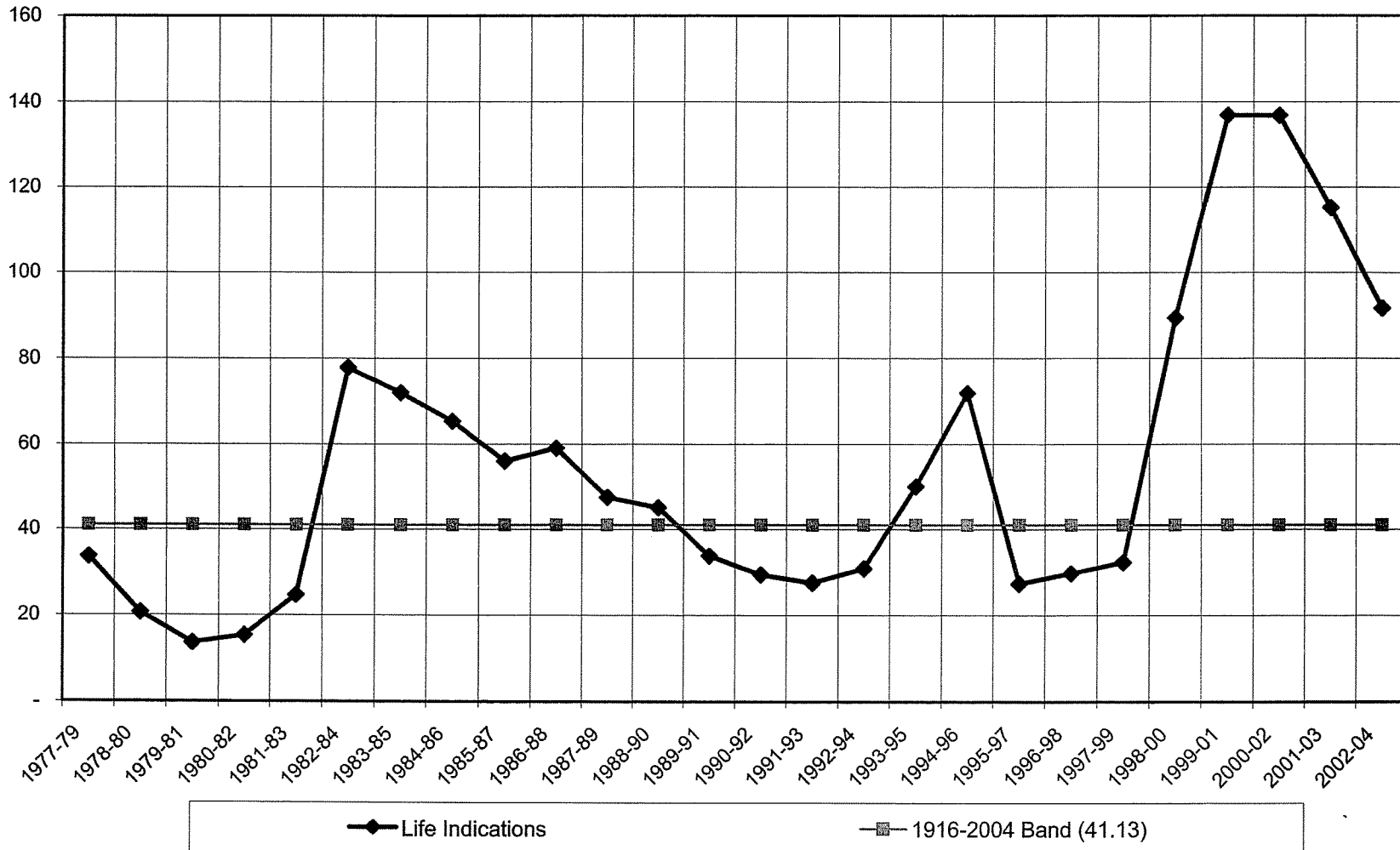
Account 353 - Station Equipment

3 Year Band

Year	BOY Plant	Avg. Plant	Single Year	Single Year	Addition	Retirement	Geometric	3 Year	Avg. Plant	Additions	Retirements	Addition	Retirement	Geometric
	Balance	Balance	Additions	Retirements	Ratio	Ratio	Mean	Band	Balance			Ratio	Ratio	Mean
	a	$b = (a + (a+1))/2$	c	d	e = c/b	f = d/b	Life Estimate $g = 1/\sqrt{(e*f)}$	h	i	j	k	l = j/i	m = k/l	Life Estim $= 1/\sqrt{(l*r)}$
2001	109,752,643	111,418,781	3,436,432	104,157	0.03084	0.00093	186.23	1999-01	327,092,888	7,410,477	769,810	0.02266	0.00235	136.95
2002	113,084,918	115,213,910	4,425,168	167,185	0.03841	0.00145	133.95	2000-02	335,296,842	10,347,112	579,871	0.03086	0.00173	136.88
2003	117,342,901	119,335,144	4,446,859	462,374	0.03726	0.00387	83.22	2001-03	345,967,834	12,308,459	733,716	0.03558	0.00212	115.13
2004	121,327,386	122,240,251	2,525,237	699,507	0.02066	0.00572	91.97	2002-04	356,789,304	11,397,264	1,329,066	0.03194	0.00373	91.67
1916-2004	1,744,034,229	1,805,610,787	137,200,294	14,047,178	0.07599	0.00778	41.13							

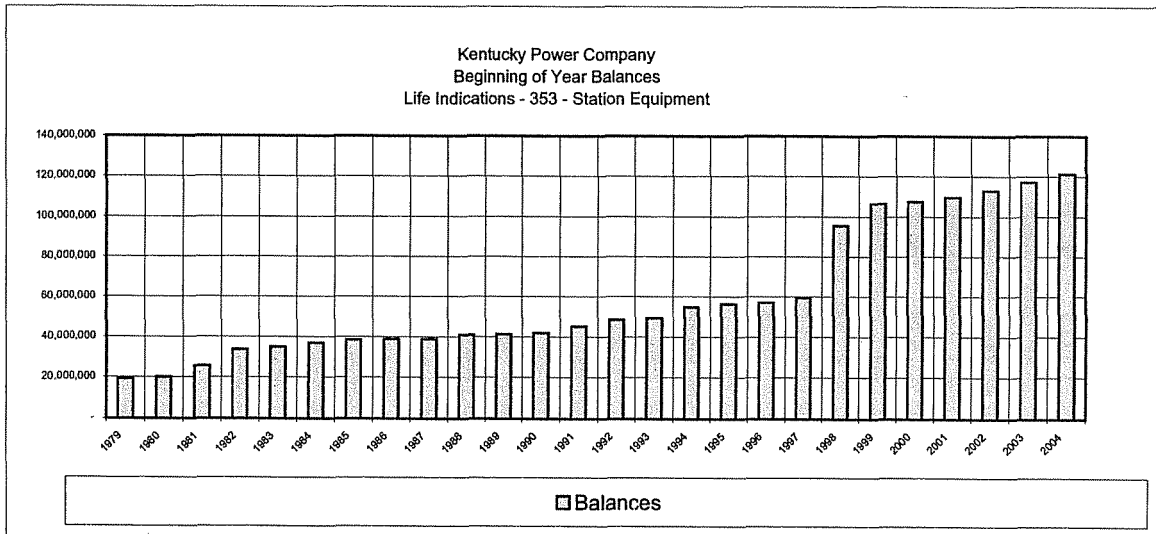
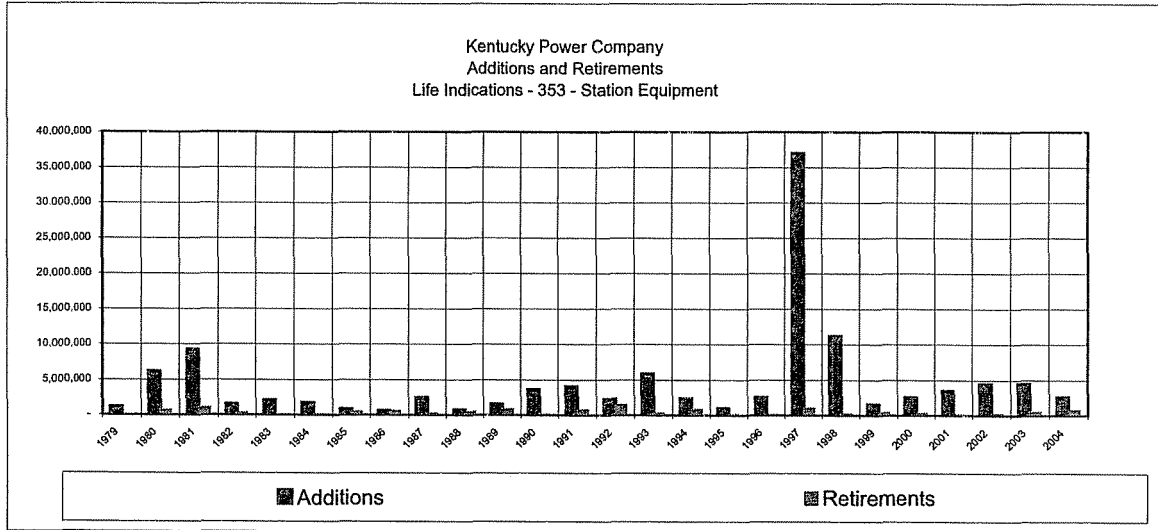
Data Source:

Kentucky Power Company  
Geometric Mean 3 Year Rolling Band Analysis  
Life Indications - 353 - Station Equipment



**Kentucky Power Company  
Electric Plant In Service  
Additions, Retirements and Balances**

**Account 353 - Station Equipment**



**Kentucky Power Company**

**353 - Station Equipment**

**Calculation of Remaining Life  
Based Upon Broad Group/Vintage Group Procedures  
Related to Original Cost as of December 31, 2004**

Survivor Curve .. IOWA: 40 R1.5

<u>Year</u> (1)	<u>Age</u> (2)	<u>Surviving</u> <u>Investment</u> (3)	<u>BG/VG Average</u>		<u>ASL</u> <u>Weights</u> (6)=(3)/(4)	<u>RL</u> <u>Weights</u> (7)=(6)*(5)
			<u>Service</u> <u>Life</u> (4)	<u>Remaining</u> <u>Life</u> (5)		
2004	0.5	2,525,237	40.00	39.59	63,131	2,499,192
2003	1.5	4,440,859	40.00	38.77	111,021	4,304,072
2002	2.5	4,425,166	40.00	37.95	110,629	4,198,836
2001	3.5	3,138,656	40.00	37.15	78,466	2,914,722
2000	4.5	2,485,512	40.00	36.34	62,138	2,258,331
1999	5.5	1,488,533	40.00	35.55	37,213	1,322,841
1998	6.5	11,141,156	40.00	34.76	278,529	9,680,818
1997	7.5	36,890,866	40.00	33.97	922,272	31,331,659
1996	8.5	2,460,717	40.00	33.19	61,518	2,041,995
1995	9.5	853,676	40.00	32.42	21,342	691,918
1994	10.5	2,257,709	40.00	31.65	56,443	1,786,626
1993	11.5	5,784,518	40.00	30.89	144,613	4,467,511
1992	12.5	2,135,657	40.00	30.14	53,391	1,609,113
1991	13.5	3,781,093	40.00	29.39	94,527	2,778,097
1990	14.5	3,006,144	40.00	28.65	75,154	2,152,934
1989	15.5	1,310,459	40.00	27.91	32,761	914,423
1988	16.5	530,915	40.00	27.18	13,273	360,796
1987	17.5	2,172,360	40.00	26.46	54,309	1,437,107
1986	18.5	499,860	40.00	25.75	12,497	321,760
1985	19.5	740,900	40.00	25.04	18,523	463,847
1984	20.5	1,222,401	40.00	24.34	30,560	743,983
1983	21.5	1,373,085	40.00	23.66	34,327	812,052
1982	22.5	1,403,128	40.00	22.98	35,078	805,979
1981	23.5	7,231,608	40.00	22.31	180,790	4,032,765
1980	24.5	5,873,681	40.00	21.65	146,842	3,178,498
1979	25.5	966,417	40.00	21.00	24,160	507,251
1978	26.5	54,599	40.00	20.35	1,365	27,784
1977	27.5	2,064,405	40.00	19.73	51,610	1,018,024
1976	28.5	1,092,819	40.00	19.11	27,320	522,003
1975	29.5	763,727	40.00	18.50	19,093	353,210
1974	30.5	1,070,195	40.00	17.90	26,755	479,004
1973	31.5	165,119	40.00	17.32	4,128	71,494
1972	32.5	169,122	40.00	16.75	4,228	70,809
1971	33.5	207,616	40.00	16.19	5,190	84,020
1970	34.5	700,895	40.00	15.64	17,522	274,057



1969	35.5	5,275,929	40.00	15.11	131,898	1,992,436
1968	36.5	59,424	40.00	14.58	1,486	21,666
1967	37.5	307,861	40.00	14.08	7,697	108,332
1966	38.5	5,843	40.00	13.58	146	1,984
1965	39.5	103,552	40.00	13.10	2,589	33,906
1964	40.5	12,210	40.00	12.63	305	3,855
1963	41.5	560,961	40.00	12.17	14,024	170,696
1962	42.5	5,906	40.00	11.73	148	1,732
1961	43.5	347	40.00	11.30	9	98
1960	44.5	25,384	40.00	10.88	635	6,905
1959	45.5	54,101	40.00	10.48	1,353	14,168
1958	46.5	577	40.00	10.08	14	145
1957	47.5	8,981	40.00	9.70	225	2,178
1956	48.5	0	40.00	9.33	0	0
1955	49.5	897	40.00	8.97	22	201
1954	50.5	294,758	40.00	8.62	7,369	63,539
1953	51.5	7,575	40.00	8.28	189	1,569

123,153,116 3,078,828 92,940,942

AVERAGE SERVICE LIFE 40.00  
AVERAGE REMAINING LIFE 30.19

## Kentucky Power Company

# 354 - Towers & Fixtures

### Company Notes

Prior to year 2000, the investment in this account was separated into categories of investments of equipment serving voltages 69KV and below and investments serving voltages above 69 KV. The investments of 69 KV and below were treated as mass assets and those above 69 KV were tracked by vintage year. In year 2000, the investments related to the mass assets were vintaged and now the entire account is treated as vintaged. However, vintaged retirements related to those assets previously treated as mass assets are not available. Therefore, the simulation method of life analysis was used for property in this account.

The simulation analyses indicate that the investment in this account is experiencing an increasing average service life. The results of the analyses indicate that an R type curve is appropriate for this account. Although the analyses indicate that an R3.0 type curve with a corresponding average service life of 83 to 100 years is the best mathematical fit, there is a very small difference in the index of variation between that life and curve and an R4.0 type curve with average service lives of 55 to 65 years. A move from the current average service life of 45 years to a 100 year life is too extreme. The recommendation is to move to an R4.0 type curve with a 55 year average service life.

There is no reuse value expected from the investment. However, there will be removal costs incurred to remove and replace the towers. The recommendation is for a 0% gross salvage and a 35% gross removal.

### Sk Notes

Account analyzed with SPR model - Use company recommendation