

**SPR Results**  
**Kentucky Power Company**  
**Account: 314 - Turbo-Generator Units**

Curve	Life	Sum of Squared Differences	Index of Variation
<b>BAND: 1963 - 2004</b>			
L2	39	4.37E+13	23
S1.5	36	5.47E+13	26
S2	35	5.86E+13	27
S1	38	6.77E+13	29
L1.5	41	7.48E+13	30
R2.5	35	7.89E+13	31
L3	36	7.99E+13	31
R3	34	9.46E+13	34
R2	36	9.71E+13	34
S0.5	40	1.07E+14	36
L1	45	1.17E+14	38
S3	34	1.38E+14	41
R1.5	39	1.51E+14	43
S0	43	1.58E+14	44
L0.5	49	1.76E+14	46
R1	42	2.17E+14	51
R4	34	2.27E+14	52
L0	55	2.39E+14	54
L4	34	2.41E+14	54
S-0.5	48	2.46E+14	55
R0.5	48	2.87E+14	59
O2	64	3.31E+14	63
O1	57	3.31E+14	63
O3	92	3.48E+14	65
S4	34	3.68E+14	67
L5	34	4.92E+14	77
R5	33	5.49E+14	81
O4	100	5.50E+14	82
S5	34	6.86E+14	91
S6	34	9.71E+14	108
SQ	35	1.68E+15	143

RECEIVED

JAN 27 2006

PUBLIC SERVICE  
COMMISSION

Minimum Equipment Life Expectancy: 1  
Maximum Equipment Life Expectancy: 100  
Life Expectancy Increment: 1  
Begin Year: 1963  
End Year: 2004  
Year Fit Increment: 0

**Plant Balances**

Year	Balance	Year	Balance	Year	Balance	Year	Balance
2004	72,939,287	2003	72,237,731	2002	64,016,574	2001	62,768,844
2000	62,862,529	1999	62,687,266	1998	62,892,504	1997	63,588,450
1996	55,225,573	1995	55,576,504	1994	54,834,108	1993	54,922,826
1992	52,733,723	1991	53,490,375	1990	51,563,207	1989	50,337,356
1988	50,002,787	1987	44,454,252	1986	44,531,667	1985	44,606,786
1984	44,086,190	1983	43,851,868	1982	43,334,013	1981	42,409,987
1980	41,112,315	1979	41,259,757	1978	40,650,746	1977	40,612,415
1976	40,580,287	1975	40,508,256	1974	40,252,563	1973	40,189,423
1972	40,125,655	1971	39,853,275	1970	39,140,193	1969	38,296,204
1968	11,918,467	1967	11,866,089	1966	11,858,931	1965	11,852,211
1964	11,840,365	1963	11,821,004				

**Simulated Balances**

Curve: L2                      ASL: 39                      SSD: 4.37E+13                      IV: 23

Year	Balance	Year	Balance	Year	Balance	Year	Balance
2004	70,943,999	2003	70,820,244	2002	62,426,703	2001	62,161,905
2000	63,339,431	1999	64,319,538	1998	65,507,874	1997	66,673,785
1996	54,766,036	1995	55,750,380	1994	55,640,058	1993	54,412,242
1992	52,666,717	1991	52,774,420	1990	51,599,617	1989	50,111,120
1988	47,778,996	1987	42,877,883	1986	43,289,761	1985	43,231,178
1984	43,216,926	1983	43,434,983	1982	42,770,041	1981	42,118,468
1980	40,514,948	1979	40,721,068	1978	39,948,499	1977	40,103,545
1976	40,238,242	1975	40,304,211	1974	40,084,090	1973	40,114,821
1972	40,124,849	1971	39,908,362	1970	39,236,448	1969	38,241,525
1968	11,885,114	1967	11,847,962	1966	11,851,059	1965	11,849,356
1964	11,839,557	1963	11,820,966				

Curve: S1.5                      ASL: 36                      SSD: 5.47E+13                      IV: 26

Year	Balance	Year	Balance	Year	Balance	Year	Balance
2004	70,082,794	2003	70,165,327	2002	61,956,125	2001	61,851,055
2000	63,161,995	1999	64,248,863	1998	65,517,470	1997	66,738,059
1996	54,861,846	1995	55,856,399	1994	55,739,079	1993	54,489,366
1992	52,711,605	1991	52,781,095	1990	51,566,611	1989	50,041,811
1988	47,678,248	1987	42,756,018	1986	43,156,243	1985	43,097,926
1984	43,093,194	1983	43,327,931	1982	42,682,963	1981	42,051,679
1980	40,466,014	1979	40,687,071	1978	39,927,898	1977	40,094,102
1976	40,238,075	1975	40,310,138	1974	40,092,837	1973	40,124,054
1972	40,133,288	1971	39,915,730	1970	39,242,396	1969	38,246,003
1968	11,887,896	1967	11,849,457	1966	11,851,571	1965	11,849,487
1964	11,839,526	1963	11,820,955				

**Curve: S2                      ASL: 35                      SSD: 5.86E+13                      IV: 27**

Year	Balance	Year	Balance	Year	Balance	Year	Balance
2004	69,069,461	2003	69,283,904	2002	61,213,675	2001	61,252,681
2000	62,711,088	1999	63,946,513	1998	65,363,042	1997	66,728,837
1996	54,992,286	1995	56,118,524	1994	56,123,133	1993	54,983,924
1992	53,303,376	1991	53,455,875	1990	52,309,111	1989	50,835,893
1988	48,507,941	1987	43,604,819	1986	44,007,691	1985	43,935,988
1984	43,904,197	1983	44,100,222	1982	43,406,278	1981	42,717,480
1980	41,067,752	1979	41,220,597	1978	40,391,120	1977	40,487,681
1976	40,564,564	1975	40,574,108	1974	40,300,611	1973	40,282,993
1972	40,251,207	1971	40,000,722	1970	39,302,208	1969	38,287,139
1968	11,914,985	1967	11,865,634	1966	11,859,896	1965	11,852,821
1964	11,840,350	1963	11,821,004				

**Curve: S1                      ASL: 38                      SSD: 6.77E+13                      IV: 29**

Year	Balance	Year	Balance	Year	Balance	Year	Balance
2004	71,884,357	2003	71,787,397	2002	63,395,798	2001	63,107,471
2000	64,235,831	1999	65,142,036	1998	66,234,114	1997	67,284,656
1996	55,245,942	1995	56,088,248	1994	55,829,998	1993	54,451,467
1992	52,559,311	1991	52,528,747	1990	51,228,852	1989	49,634,518
1988	47,217,068	1987	42,256,757	1986	42,634,357	1985	42,566,519
1984	42,565,397	1983	42,815,672	1982	42,195,514	1981	41,597,618
1980	40,051,162	1979	40,316,022	1978	39,603,861	1977	39,817,044
1976	40,007,030	1975	40,122,725	1974	39,944,694	1973	40,010,699
1972	40,049,167	1971	39,854,685	1970	39,199,425	1969	38,216,374
1968	11,868,374	1967	11,837,867	1966	11,845,593	1965	11,847,033
1964	11,838,953	1963	11,820,921				

**Curve: L1.5                      ASL: 41                      SSD: 7.48E+13                      IV: 30**

Year	Balance	Year	Balance	Year	Balance	Year	Balance
2004	71,813,567	2003	71,603,347	2002	63,111,407	2001	62,736,846
2000	63,796,006	1999	64,651,017	1998	65,708,143	1997	66,738,572
1996	54,689,537	1995	55,529,711	1994	55,280,854	1993	53,921,087
1992	52,054,033	1991	52,053,084	1990	50,784,569	1989	49,220,407
1988	46,829,155	1987	41,889,999	1986	42,282,771	1985	42,227,861
1984	42,235,928	1983	42,493,555	1982	41,880,545	1981	41,289,385
1980	39,750,932	1979	40,024,394	1978	39,322,199	1977	39,547,928
1976	39,753,536	1975	39,887,976	1974	39,732,712	1973	39,824,159
1972	39,890,162	1971	39,725,532	1970	39,099,982	1969	38,145,847
1968	11,815,804	1967	11,794,614	1966	11,812,003	1965	11,823,589
1964	11,825,378	1963	11,816,713				

**Curve: R2.5                      ASL: 35                      SSD: 7.89E+13                      IV: 31**

Year	Balance	Year	Balance	Year	Balance	Year	Balance
2004	69,630,996	2003	69,979,584	2002	62,007,382	2001	62,105,048
2000	63,587,624	1999	64,812,442	1998	66,185,124	1997	67,476,428
1996	55,628,727	1995	56,613,350	1994	56,460,580	1993	55,152,087
1992	53,295,574	1991	53,272,347	1990	51,955,782	1989	50,322,453
1988	47,847,469	1987	42,811,528	1986	43,101,038	1985	42,941,122
1984	42,846,141	1983	43,004,158	1982	42,296,065	1981	41,614,980
1980	39,992,257	1979	40,190,037	1978	39,421,166	1977	39,590,905
1976	39,751,053	1975	39,850,778	1974	39,671,092	1973	39,748,238
1972	39,810,027	1971	39,649,679	1970	39,036,063	1969	38,099,235
1968	11,779,194	1967	11,759,522	1966	11,781,528	1965	11,799,878
1964	11,810,387	1963	11,811,566				

Curve: L3 ASL: 36 SSD: 7.99E+13 IV: 31

Year	Balance	Year	Balance	Year	Balance	Year	Balance
2004	68,579,196	2003	68,720,149	2002	60,633,829	2001	60,713,311
2000	62,263,933	1999	63,636,320	1998	65,224,030	1997	66,782,279
1996	55,246,316	1995	56,568,619	1994	56,752,326	1993	55,764,799
1992	54,200,734	1991	54,430,998	1990	53,322,322	1989	51,849,548
1988	49,487,672	1987	44,523,419	1986	44,845,306	1985	44,681,109
1984	44,550,955	1983	44,648,201	1982	43,859,622	1981	43,083,985
1980	41,357,540	1979	41,444,701	1978	40,560,897	1977	40,613,418
1976	40,655,713	1975	40,638,623	1974	40,345,040	1973	40,312,591
1972	40,270,512	1971	40,013,281	1970	39,310,489	1969	38,292,498
1968	11,918,192	1967	11,867,290	1966	11,860,532	1965	11,852,966
1964	11,840,365	1963	11,821,004				

Curve: R3 ASL: 34 SSD: 9.46E+13 IV: 34

Year	Balance	Year	Balance	Year	Balance	Year	Balance
2004	68,083,095	2003	68,672,984	2002	60,955,779	2001	61,313,425
2000	63,048,182	1999	64,511,304	1998	66,102,577	1997	67,589,170
1996	55,918,260	1995	57,059,790	1994	57,037,471	1993	55,835,096
1992	54,063,385	1991	54,103,972	1990	52,831,959	1989	51,226,853
1988	48,766,469	1987	43,735,002	1986	44,019,401	1985	43,843,786
1984	43,723,855	1983	43,848,882	1982	43,101,340	1981	42,375,947
1980	40,705,540	1979	40,852,779	1978	40,031,008	1977	40,145,941
1976	40,249,608	1975	40,291,968	1974	40,054,926	1973	40,075,245
1972	40,081,257	1971	39,866,706	1970	39,201,045	1969	38,215,079
1968	11,862,932	1967	11,826,496	1966	11,832,324	1965	11,835,209
1964	11,830,980	1963	11,818,237				

Curve: R2 ASL: 36 SSD: 9.71E+13 IV: 34

Year	Balance	Year	Balance	Year	Balance	Year	Balance
2004	70,619,728	2003	70,736,637	2002	62,532,643	2001	62,404,157
2000	63,676,363	1999	64,711,619	1998	65,916,840	1997	67,063,669
1996	55,088,230	1995	55,961,915	1994	55,720,462	1993	54,343,189

1992	52,435,303	1991	52,376,681	1990	51,039,385	1989	49,397,455
1988	46,923,498	1987	41,895,275	1986	42,199,802	1985	42,063,755
1984	41,999,615	1983	42,194,328	1982	41,527,682	1981	40,891,612
1980	39,316,370	1979	39,563,650	1978	38,846,342	1977	39,068,734
1976	39,282,671	1975	39,436,653	1974	39,310,861	1973	39,441,201
1972	39,555,372	1971	39,446,127	1970	38,881,363	1969	37,990,713
1968	11,700,700	1967	11,696,645	1966	11,733,745	1965	11,766,662
1964	11,790,991	1963	11,805,283				

**Curve: S0.5 ASL: 40 SSD: 1.07E+14 IV: 36**

Year	Balance	Year	Balance	Year	Balance	Year	Balance
2004	72,731,674	2003	72,511,966	2002	63,997,129	2001	63,589,459
2000	64,604,136	1999	65,402,135	1998	66,390,077	1997	67,338,258
1996	55,196,818	1995	55,941,281	1994	55,591,483	1993	54,127,722
1992	52,156,055	1991	52,052,952	1990	50,687,312	1989	49,032,993
1988	46,562,522	1987	41,556,193	1986	41,897,624	1985	41,805,212
1984	41,789,855	1983	42,036,226	1982	41,422,527	1981	40,839,878
1980	39,318,061	1979	39,617,089	1978	38,947,072	1977	39,211,265
1976	39,458,920	1975	39,637,422	1974	39,526,412	1973	39,660,725
1972	39,766,762	1971	39,636,488	1970	39,037,696	1969	38,099,271
1968	11,778,449	1967	11,770,319	1966	11,799,318	1965	11,819,796
1964	11,827,081	1963	11,818,991				

**Curve: L1 ASL: 45 SSD: 1.17E+14 IV: 38**

Year	Balance	Year	Balance	Year	Balance	Year	Balance
2004	73,574,193	2003	73,212,060	2002	64,561,690	2001	64,023,229
2000	64,917,092	1999	65,607,214	1998	66,501,986	1997	67,374,298
1996	55,169,507	1995	55,859,959	1994	55,471,608	1993	53,982,802
1992	51,997,359	1991	51,890,864	1990	50,531,332	1989	48,891,145
1988	46,440,634	1987	41,455,919	1986	41,818,155	1985	41,746,745
1984	41,751,358	1983	42,016,095	1982	41,418,315	1981	40,847,222
1980	39,332,434	1979	39,633,815	1978	38,962,385	1977	39,221,212
1976	39,460,838	1975	39,629,622	1974	39,508,665	1973	39,634,083
1972	39,733,363	1971	39,600,651	1970	39,005,459	1969	38,079,064
1968	11,766,888	1967	11,755,676	1966	11,782,828	1965	11,803,634
1964	11,814,165	1963	11,813,297				

**Curve: S3 ASL: 34 SSD: 1.38E+14 IV: 41**

Year	Balance	Year	Balance	Year	Balance	Year	Balance
2004	67,195,753	2003	67,698,774	2002	59,951,982	2001	60,339,340
2000	62,160,222	1999	63,761,580	1998	65,536,107	1997	67,241,487
1996	55,816,455	1995	57,218,000	1994	57,455,201	1993	56,500,857
1992	54,956,161	1991	55,194,188	1990	54,084,000	1989	52,601,635
1988	50,223,606	1987	45,235,105	1986	45,524,742	1985	45,319,573
1984	45,140,466	1983	45,182,374	1982	44,333,924	1981	43,495,751
1980	41,706,358	1979	41,732,949	1978	40,792,765	1977	40,794,768

1976	40,793,202	1975	40,739,608	1974	40,416,837	1973	40,361,899
1972	40,302,912	1971	40,033,108	1970	39,321,308	1969	38,297,508
1968	11,920,003	1967	11,867,690	1966	11,860,558	1965	11,852,966
1964	11,840,365	1963	11,821,004				

**Curve: R1.5 ASL: 39 SSD: 1.51E+14 IV: 43**

Year	Balance	Year	Balance	Year	Balance	Year	Balance
2004	72,782,425	2003	72,639,901	2002	64,179,170	2001	63,797,842
2000	64,832,542	1999	65,647,494	1998	66,651,359	1997	67,616,745
1996	55,467,311	1995	56,174,641	1994	55,784,673	1993	54,275,259
1992	52,249,396	1991	52,087,798	1990	50,662,019	1989	48,943,951
1988	46,404,987	1987	41,318,228	1986	41,573,223	1985	41,399,909
1984	41,310,285	1983	41,490,896	1982	40,820,387	1981	40,189,004
1980	38,625,384	1979	38,891,937	1978	38,201,215	1977	38,457,077
1976	38,711,217	1975	38,911,639	1974	38,837,683	1973	39,024,434
1972	39,199,322	1971	39,153,953	1970	38,655,519	1969	37,831,963
1968	11,585,228	1967	11,600,537	1966	11,657,949	1965	11,711,807
1964	11,757,807	1963	11,794,142				

**Curve: S0 ASL: 43 SSD: 1.58E+14 IV: 44**

Year	Balance	Year	Balance	Year	Balance	Year	Balance
2004	73,767,108	2003	73,415,447	2002	64,770,353	2001	64,237,896
2000	65,134,997	1999	65,821,640	1998	66,703,389	1997	67,549,616
1996	55,307,417	1995	55,956,931	1994	55,519,240	1993	53,973,999
1992	51,926,870	1991	51,755,479	1990	50,328,136	1989	48,617,955
1988	46,098,146	1987	41,049,325	1986	41,356,813	1985	41,240,025
1984	41,209,705	1983	41,449,446	1982	40,837,555	1981	40,264,880
1980	38,759,967	1979	39,083,695	1978	38,445,704	1977	38,747,939
1976	39,039,287	1975	39,266,219	1974	39,206,039	1973	39,392,543
1972	39,550,743	1971	39,469,341	1970	38,913,628	1969	38,009,785
1968	11,709,566	1967	11,718,585	1966	11,763,982	1965	11,798,984
1964	11,817,951	1963	11,817,573				

**Curve: L0.5 ASL: 49 SSD: 1.76E+14 IV: 46**

Year	Balance	Year	Balance	Year	Balance	Year	Balance
2004	74,120,635	2003	73,690,993	2002	64,970,084	2001	64,363,868
2000	65,195,892	1999	65,828,396	1998	66,667,777	1997	67,483,293
1996	55,211,808	1995	55,832,858	1994	55,374,491	1993	53,814,596
1992	51,757,466	1991	51,580,704	1990	50,152,254	1989	48,443,705
1988	45,925,603	1987	40,875,030	1986	41,179,174	1985	41,059,697
1984	41,026,749	1983	41,264,854	1982	40,651,016	1981	40,075,387
1980	38,566,700	1979	38,886,059	1978	38,243,749	1977	38,543,231
1976	38,834,112	1975	39,063,336	1974	39,009,736	1973	39,207,601
1972	39,382,467	1971	39,324,722	1970	38,799,455	1969	37,931,216
1968	11,651,641	1967	11,665,921	1966	11,718,601	1965	11,763,540
1964	11,795,219	1963	11,809,810				

<b>Curve: R1</b>		<b>ASL: 42</b>		<b>SSD: 2.17E+14</b>		<b>IV: 51</b>	
<b>Year</b>	<b>Balance</b>	<b>Year</b>	<b>Balance</b>	<b>Year</b>	<b>Balance</b>	<b>Year</b>	<b>Balance</b>
2004	73,655,682	2003	73,340,336	2002	64,712,477	2001	64,170,742
2000	65,059,278	1999	65,743,614	1998	66,632,091	1997	67,497,712
1996	55,252,891	1995	55,868,632	1994	55,400,297	1993	53,822,900
1992	51,738,468	1991	51,527,380	1990	50,061,911	1989	48,311,958
1988	45,747,194	1987	40,638,299	1986	40,875,623	1985	40,693,258
1984	40,602,293	1983	40,789,106	1982	40,131,502	1981	39,518,618
1980	37,977,818	1979	38,271,787	1978	37,613,138	1977	37,905,309
1976	38,200,543	1975	38,446,022	1974	38,420,752	1973	38,659,200
1972	38,888,403	1971	38,899,947	1970	38,459,459	1969	37,694,421
1968	11,485,308	1967	11,517,675	1966	11,592,666	1965	11,664,786
1964	11,729,316	1963	11,784,601				

<b>Curve: R4</b>		<b>ASL: 34</b>		<b>SSD: 2.27E+14</b>		<b>IV: 52</b>	
<b>Year</b>	<b>Balance</b>	<b>Year</b>	<b>Balance</b>	<b>Year</b>	<b>Balance</b>	<b>Year</b>	<b>Balance</b>
2004	67,420,793	2003	68,460,366	2002	61,197,123	2001	61,980,990
2000	64,092,546	1999	65,877,422	1998	67,741,204	1997	69,459,845
1996	57,984,097	1995	59,272,883	1994	59,339,010	1993	58,167,895
1992	56,380,412	1991	56,371,394	1990	55,026,818	1989	53,330,955
1988	50,764,027	1987	45,613,369	1986	45,768,291	1985	45,455,183
1984	45,193,216	1983	45,174,798	1982	44,285,425	1981	43,422,390
1980	41,620,836	1979	41,644,713	1978	40,708,450	1977	40,718,569
1976	40,727,338	1975	40,684,864	1974	40,372,905	1973	40,327,863
1972	40,277,421	1971	40,014,719	1970	39,308,582	1969	38,289,136
1968	11,914,569	1967	11,864,191	1966	11,858,416	1965	11,851,762
1964	11,839,795	1963	11,820,854				

<b>Curve: L0</b>		<b>ASL: 55</b>		<b>SSD: 2.39E+14</b>		<b>IV: 54</b>	
<b>Year</b>	<b>Balance</b>	<b>Year</b>	<b>Balance</b>	<b>Year</b>	<b>Balance</b>	<b>Year</b>	<b>Balance</b>
2004	74,945,152	2003	74,433,503	2002	65,629,540	2001	64,942,225
2000	65,697,145	1999	66,255,591	1998	67,022,599	1997	67,765,130
1996	55,416,164	1995	55,960,694	1994	55,428,631	1993	53,797,179
1992	51,670,732	1991	51,427,883	1990	49,936,666	1989	48,168,804
1988	45,595,091	1987	40,493,025	1986	40,752,997	1985	40,597,734
1984	40,537,449	1983	40,756,836	1982	40,132,628	1981	39,554,732
1980	38,051,633	1979	38,384,635	1978	37,763,595	1977	38,091,838
1976	38,418,414	1975	38,689,189	1974	38,681,747	1973	38,928,183
1972	39,153,042	1971	39,144,549	1970	38,664,952	1969	37,834,520
1968	11,576,981	1967	11,608,086	1966	11,677,346	1965	11,737,871
1964	11,783,104	1963	11,807,453				

<b>Curve: L4</b>		<b>ASL: 34</b>		<b>SSD: 2.41E+14</b>		<b>IV: 54</b>	
------------------	--	----------------	--	----------------------	--	---------------	--

Year	Balance	Year	Balance	Year	Balance	Year	Balance
2004	65,632,605	2003	66,211,178	2002	58,657,431	2001	59,339,207
2000	61,527,135	1999	63,523,631	1998	65,671,235	1997	67,692,222
1996	56,510,095	1995	58,083,835	1994	58,433,836	1993	57,541,865
1992	56,012,829	1991	56,223,074	1990	55,047,463	1989	53,471,344
1988	50,982,864	1987	45,878,921	1986	46,057,698	1985	45,752,262
1984	45,486,162	1983	45,454,599	1982	44,545,237	1981	43,657,237
1980	41,827,667	1979	41,822,464	1978	40,857,662	1977	40,841,041
1976	40,825,644	1975	40,761,680	1974	40,431,092	1973	40,370,454
1972	40,307,505	1971	40,035,273	1970	39,322,203	1969	38,297,831
1968	11,920,094	1967	11,867,716	1966	11,860,558	1965	11,852,966
1964	11,840,365	1963	11,821,004				

Curve: **S-0.5**                      **ASL: 48**                      **SSD: 2.46E+14**                      **IV: 55**

Year	Balance	Year	Balance	Year	Balance	Year	Balance
2004	74,529,316	2003	74,067,350	2002	65,305,174	2001	64,643,762
2000	65,423,242	1999	66,008,494	1998	66,806,647	1997	67,589,136
1996	55,272,186	1995	55,829,274	1994	55,310,857	1993	53,691,863
1992	51,574,182	1991	51,337,790	1990	49,853,338	1989	48,090,707
1988	45,519,465	1987	40,410,854	1986	40,655,242	1985	40,483,896
1984	40,407,059	1983	40,610,486	1982	39,971,001	1981	39,377,541
1980	37,857,355	1979	38,172,386	1978	37,534,906	1977	37,847,811
1976	38,162,498	1975	38,425,764	1974	38,415,920	1973	38,667,014
1972	38,905,406	1971	38,921,567	1970	38,480,583	1969	37,708,252
1968	11,493,320	1967	11,528,364	1966	11,604,730	1965	11,676,542
1964	11,738,768	1963	11,788,868				

Curve: **R0.5**                      **ASL: 48**                      **SSD: 2.87E+14**                      **IV: 59**

Year	Balance	Year	Balance	Year	Balance	Year	Balance
2004	74,718,158	2003	74,245,555	2002	65,465,450	2001	64,775,883
2000	65,528,976	1999	66,092,106	1998	66,873,431	1997	67,646,169
1996	55,311,281	1995	55,838,068	1994	55,292,418	1993	53,647,094
1992	51,502,045	1991	51,238,939	1990	49,729,798	1989	47,942,872
1988	45,346,498	1987	40,207,324	1986	40,417,693	1985	40,215,520
1984	40,111,050	1983	40,290,899	1982	39,631,729	1981	39,021,709
1980	37,487,074	1979	37,790,739	1978	37,146,429	1977	37,457,127
1976	37,775,872	1975	38,049,994	1974	38,057,841	1973	38,334,127
1972	38,606,140	1971	38,665,076	1970	38,276,314	1969	37,566,317
1968	11,392,268	1967	11,438,263	1966	11,528,309	1965	11,616,933
1964	11,699,540	1963	11,774,315				

Curve: **O2**                      **ASL: 64**                      **SSD: 3.31E+14**                      **IV: 63**

Year	Balance	Year	Balance	Year	Balance	Year	Balance
2004	75,615,495	2003	75,038,160	2002	66,158,059	2001	65,372,574
2000	66,037,871	1999	66,521,796	1998	67,232,473	1997	67,943,116
1996	55,548,630	1995	56,017,408	1994	55,420,327	1993	53,728,976



1992	51,542,295	1991	51,242,261	1990	49,700,893	1989	47,885,472
1988	45,263,499	1987	40,099,770	1986	40,287,379	1985	40,066,228
1984	39,946,190	1983	40,113,926	1982	39,445,721	1981	38,829,261
1980	37,290,288	1979	37,592,033	1978	36,948,490	1977	37,262,614
1976	37,587,852	1975	37,871,506	1974	37,891,800	1973	38,183,446
1972	38,473,861	1971	38,554,117	1970	38,189,246	1969	37,505,394
1968	11,347,956	1967	11,400,002	1966	11,496,995	1965	11,593,462
1964	11,684,789	1963	11,769,186				

Curve: O1 ASL: 57 SSD: 3.31E+14 IV: 63

Year	Balance	Year	Balance	Year	Balance	Year	Balance
2004	75,637,058	2003	75,058,707	2002	66,177,635	2001	65,391,154
2000	66,055,491	1999	66,538,502	1998	67,248,314	1997	67,958,126
1996	55,562,870	1995	56,030,856	1994	55,433,022	1993	53,740,957
1992	51,553,591	1991	51,252,859	1990	49,710,864	1989	47,894,840
1988	45,272,271	1987	40,107,951	1986	40,294,973	1985	40,073,231
1984	39,952,629	1983	40,119,818	1982	39,451,069	1981	38,834,063
1980	37,294,574	1979	37,595,779	1978	36,951,730	1977	37,265,369
1976	37,590,135	1975	37,873,325	1974	37,893,219	1973	38,184,491
1972	38,474,579	1971	38,554,580	1970	38,189,557	1969	37,505,624
1968	11,348,141	1967	11,400,095	1966	11,497,009	1965	11,593,423
1964	11,684,741	1963	11,769,157				

Curve: O3 ASL: 92 SSD: 3.48E+14 IV: 65

Year	Balance	Year	Balance	Year	Balance	Year	Balance
2004	75,900,049	2003	75,286,701	2002	66,372,642	2001	65,554,975
2000	66,190,967	1999	66,648,508	1998	67,335,659	1997	68,025,556
1996	55,611,454	1995	56,061,360	1994	55,447,597	1993	53,741,357
1992	51,541,293	1991	51,229,424	1990	49,677,863	1989	47,853,509
1988	45,223,647	1987	40,052,558	1986	40,233,571	1985	40,007,154
1984	39,883,074	1983	40,047,958	1982	39,377,966	1981	38,760,612
1980	37,221,497	1979	37,523,845	1978	36,881,781	1977	37,198,194
1976	37,526,586	1975	37,814,195	1974	37,839,247	1973	38,136,378
1972	38,432,999	1971	38,520,161	1970	38,162,788	1969	37,486,854
1968	11,334,464	1967	11,388,531	1966	11,487,730	1965	11,586,606
1964	11,680,545	1963	11,767,732				

Curve: S4 ASL: 34 SSD: 3.68E+14 IV: 67

Year	Balance	Year	Balance	Year	Balance	Year	Balance
2004	65,991,596	2003	66,948,774	2002	59,722,856	2001	60,668,231
2000	63,052,611	1999	65,191,840	1998	67,450,470	1997	69,562,849
1996	58,450,860	1995	60,061,966	1994	60,403,108	1993	59,451,534
1992	57,819,635	1991	57,895,385	1990	56,565,365	1989	54,824,042
1988	52,165,821	1987	46,891,936	1986	46,904,795	1985	46,441,891
1984	46,031,366	1983	45,872,285	1982	44,854,689	1981	43,878,541
1980	41,979,985	1979	41,922,830	1978	40,920,406	1977	40,877,655

1976	40,845,018	1975	40,770,648	1974	40,434,518	1973	40,371,421
1972	40,307,665	1971	40,035,285	1970	39,322,203	1969	38,297,831
1968	11,920,094	1967	11,867,716	1966	11,860,558	1965	11,852,966
1964	11,840,365	1963	11,821,004				

**Curve: L5                      ASL: 34                      SSD: 4.92E+14                      IV: 77**

Year	Balance	Year	Balance	Year	Balance	Year	Balance
2004	64,529,545	2003	65,706,959	2002	58,845,824	2001	60,220,520
2000	63,011,310	1999	65,471,027	1998	67,945,047	1997	70,188,682
1996	59,161,446	1995	60,837,707	1994	61,226,673	1993	60,289,680
1992	58,622,932	1991	58,613,796	1990	57,165,291	1989	55,295,850
1988	52,520,069	1987	47,149,877	1986	47,089,448	1985	46,573,129
1984	46,124,315	1983	45,937,420	1982	44,898,944	1981	43,906,873
1980	41,996,606	1979	41,931,538	1978	40,924,420	1977	40,879,297
1976	40,845,621	1975	40,770,844	1974	40,434,573	1973	40,371,433
1972	40,307,665	1971	40,035,285	1970	39,322,203	1969	38,297,831
1968	11,920,094	1967	11,867,716	1966	11,860,558	1965	11,852,966
1964	11,840,365	1963	11,821,004				

**Curve: R5                      ASL: 33                      SSD: 5.49E+14                      IV: 81**

Year	Balance	Year	Balance	Year	Balance	Year	Balance
2004	62,280,248	2003	63,754,433	2002	57,106,624	2001	58,648,881
2000	61,614,637	1999	64,288,903	1998	67,010,901	1997	69,498,052
1996	58,665,442	1995	60,463,116	1994	60,907,907	1993	59,992,323
1992	58,343,791	1991	58,366,488	1990	56,962,084	1989	55,138,358
1988	52,400,622	1987	47,058,131	1986	47,016,580	1985	46,513,833
1984	46,076,033	1983	45,899,307	1982	44,870,771	1981	43,888,063
1980	41,985,604	1979	41,926,103	1978	40,922,231	1977	40,878,602
1976	40,845,451	1975	40,770,822	1974	40,434,573	1973	40,371,433
1972	40,307,665	1971	40,035,285	1970	39,322,203	1969	38,297,831
1968	11,920,094	1967	11,867,716	1966	11,860,558	1965	11,852,966
1964	11,840,365	1963	11,821,004				

**Curve: O4                      ASL: 100                      SSD: 5.50E+14                      IV: 82**

Year	Balance	Year	Balance	Year	Balance	Year	Balance
2004	71,844,921	2003	71,378,347	2002	62,601,641	2001	61,911,578
2000	62,677,731	1999	63,269,591	1998	64,095,129	1997	64,927,684
1996	52,643,388	1995	53,209,962	1994	52,714,889	1993	51,126,514
1992	49,041,313	1991	48,843,010	1990	47,404,443	1989	45,690,499
1988	43,166,932	1987	38,093,623	1986	38,367,468	1985	38,235,184
1984	38,206,098	1983	38,467,263	1982	37,893,997	1981	37,372,708
1980	35,927,806	1979	36,323,603	1978	35,775,269	1977	36,185,637
1976	36,609,384	1975	36,993,629	1974	37,116,102	1973	37,511,364
1972	37,907,100	1971	38,094,003	1970	37,836,083	1969	37,258,277
1968	11,169,231	1967	11,252,832	1966	11,381,788	1965	11,510,675
1964	11,634,851	1963	11,752,472				

**Curve: S5                      ASL: 34                      SSD: 6.86E+14                      IV: 91**

Year	Balance	Year	Balance	Year	Balance	Year	Balance
2004	64,140,035	2003	65,749,400	2002	59,282,493	2001	61,012,240
2000	64,129,248	1999	66,888,709	1998	69,617,428	1997	72,035,570
1996	61,070,011	1995	62,686,070	1994	62,915,332	1993	61,762,578
1992	59,867,524	1991	59,644,292	1990	58,003,856	1989	55,962,137
1988	53,030,708	1987	47,522,470	1986	47,345,284	1985	46,736,378
1984	46,219,495	1983	45,986,866	1982	44,921,055	1981	43,914,936
1980	41,998,778	1979	41,931,894	1978	40,924,446	1977	40,879,297
1976	40,845,621	1975	40,770,844	1974	40,434,573	1973	40,371,433
1972	40,307,665	1971	40,035,285	1970	39,322,203	1969	38,297,831
1968	11,920,094	1967	11,867,716	1966	11,860,558	1965	11,852,966
1964	11,840,365	1963	11,821,004				

**Curve: S6                      ASL: 34                      SSD: 9.71E+14                      IV: 108**

Year	Balance	Year	Balance	Year	Balance	Year	Balance
2004	61,885,212	2003	64,605,411	2002	59,384,671	2001	62,122,589
2000	65,791,624	1999	68,680,443	1998	71,327,701	1997	73,669,152
1996	62,716,102	1995	64,377,293	1994	64,576,892	1993	63,258,951
1992	61,081,627	1991	60,530,085	1990	58,587,565	1989	56,311,693
1988	53,221,911	1987	47,618,517	1986	47,389,471	1985	46,754,907
1984	46,226,506	1983	45,989,240	1982	44,921,759	1981	43,915,117
1980	41,998,813	1979	41,931,900	1978	40,924,446	1977	40,879,297
1976	40,845,621	1975	40,770,844	1974	40,434,573	1973	40,371,433
1972	40,307,665	1971	40,035,285	1970	39,322,203	1969	38,297,831
1968	11,920,094	1967	11,867,716	1966	11,860,558	1965	11,852,966
1964	11,840,365	1963	11,821,004				

**Curve: SQ                      ASL: 35                      SSD: 1.68E+15                      IV: 143**

Year	Balance	Year	Balance	Year	Balance	Year	Balance
2004	55,444,908	2003	80,428,106	2002	70,831,659	2001	69,333,505
2000	69,293,415	1999	69,078,215	1998	69,097,576	1997	80,918,580
1996	67,870,739	1995	67,743,924	1994	66,557,051	1993	64,291,091
1992	61,551,782	1991	60,714,793	1990	58,649,272	1989	56,328,957
1988	53,225,884	1987	47,619,261	1986	47,389,578	1985	46,754,921
1984	46,226,506	1983	45,989,240	1982	44,921,759	1981	43,915,117
1980	41,998,813	1979	41,931,900	1978	40,924,446	1977	40,879,297
1976	40,845,621	1975	40,770,844	1974	40,434,573	1973	40,371,433
1972	40,307,665	1971	40,035,285	1970	39,322,203	1969	38,297,831
1968	11,920,094	1967	11,867,716	1966	11,860,558	1965	11,852,966
1964	11,840,365	1963	11,821,004				

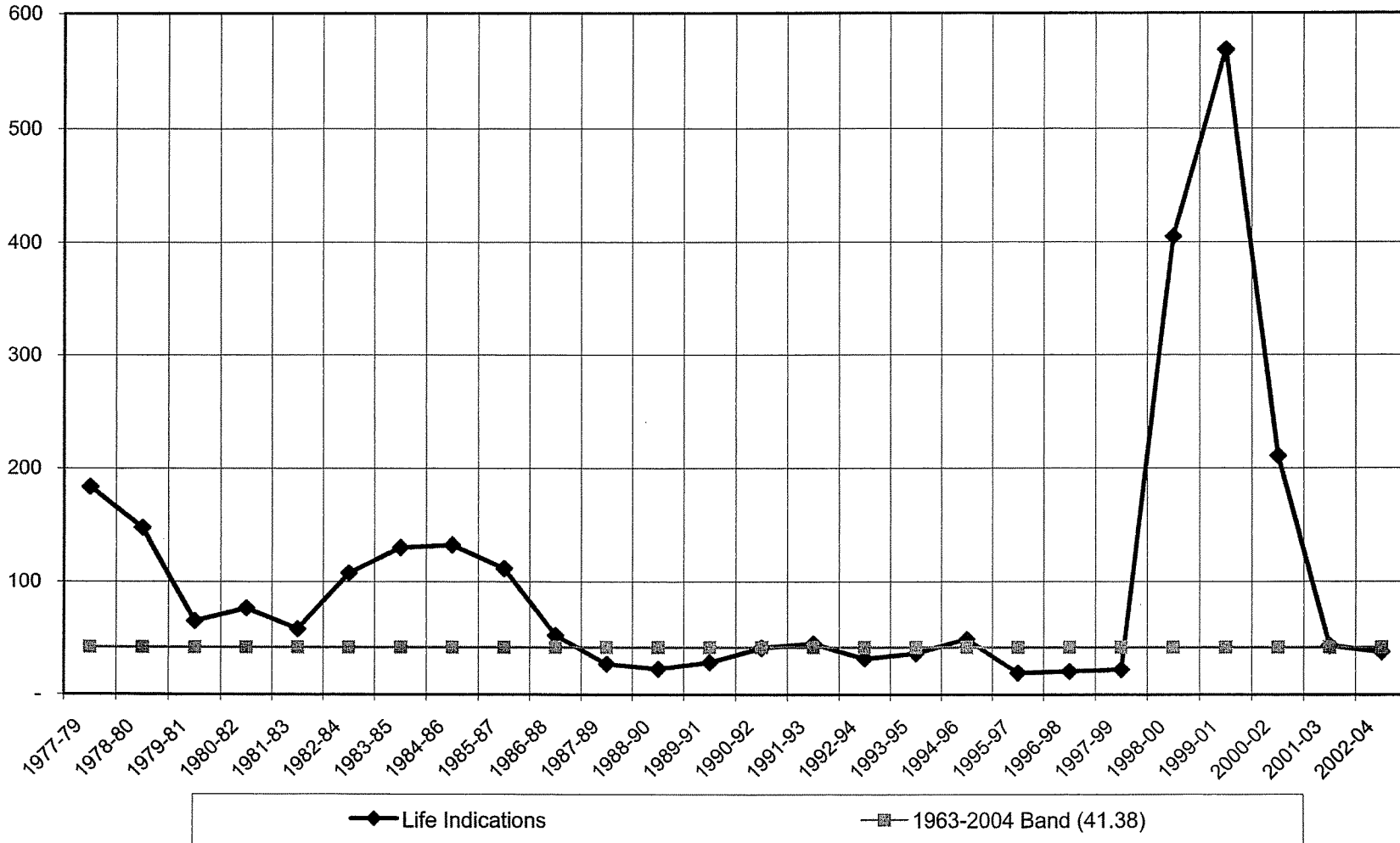
Kentucky Power Company  
Electric Plant In Service  
Geometric Mean Turnover Analysis  
Account 314 - Turbo-Generator Units

3 Year Band

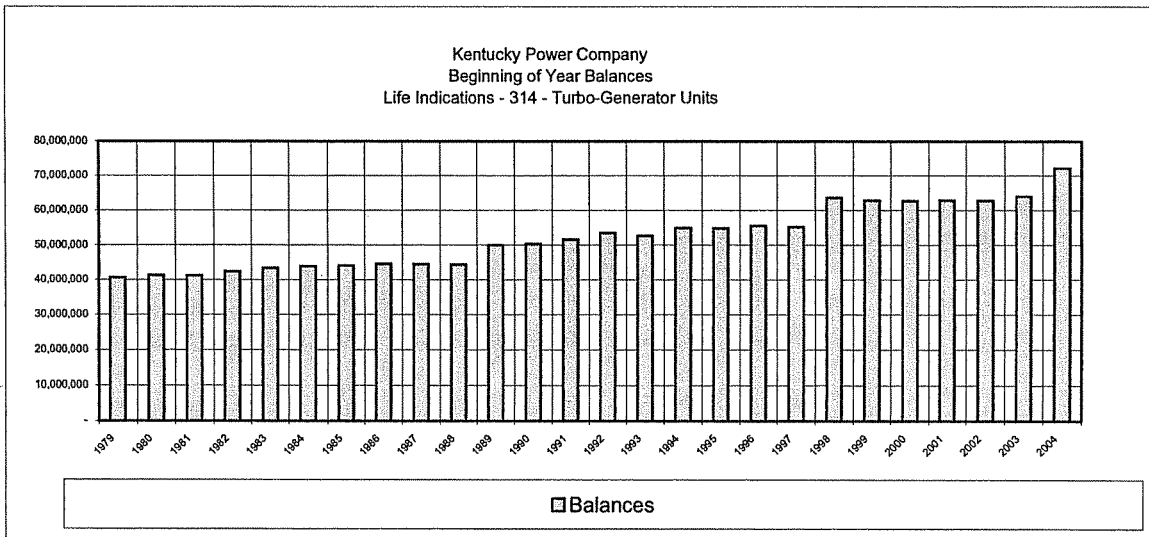
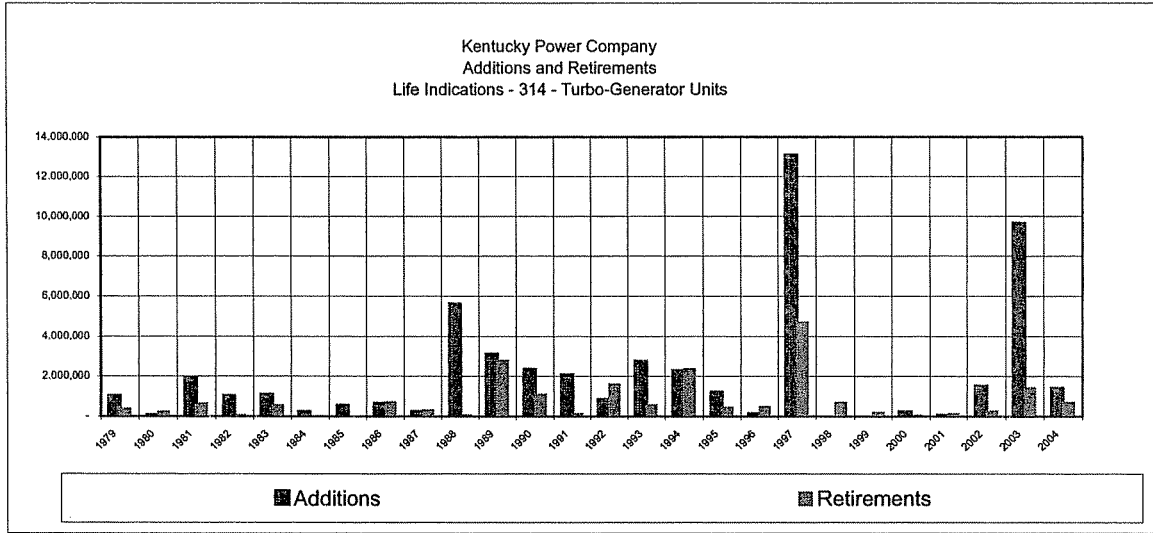
Year	BOY Plant Balance a	Avg. Plant Balance b=(a+(a+1))/2	Single Year Additions c	Single Year Retirements d	Addition Ratio e = c/b	Retirement Ratio f = d/b	Geometric Mean Life Estimate g = 1/sqrt(e*f)	3 Year Band				Addition Ratio l = j/i	Retirement Ratio m = k/l	Geometric Mean Life Estimate = 1/sqrt(l*m)	
								3 Year Band h	Avg. Plant Balance i	Additions j	Retirements k				
1963	-	5,910,502	11,821,004	-	2.00000	-	-	-	-	-	-	-	-	-	-
1964	11,821,004	11,830,685	19,361	-	0.00164	-	-	-	-	-	-	-	-	-	-
1965	11,840,365	11,846,288	12,601	755	0.00106	0.00006	3,840.66	1963-65	29,587,475	11,852,966	755	0.40061	0.00003	312.77	
1966	11,852,211	11,855,571	7,592	872	0.00064	0.00007	4,607.72	1964-66	35,532,544	39,554	1,627	0.00111	0.00005	4,429.32	
1967	11,858,931	11,862,510	7,158	-	0.00060	-	-	1965-67	35,564,369	27,351	1,627	0.00077	0.00005	5,331.32	
1968	11,866,089	11,892,278	52,378	-	0.00440	-	-	1966-68	35,610,359	67,128	872	0.00189	0.00002	4,654.43	
1969	11,918,467	25,107,336	26,377,737	-	1.05060	-	-	1967-69	48,862,124	26,437,273	-	0.54106	-	-	
1970	38,296,204	38,718,199	1,024,372	180,383	0.02646	0.00466	90.07	1968-70	75,717,812	27,454,487	180,383	0.36259	0.00238	34.02	
1971	39,140,193	39,496,734	713,082	-	0.01805	-	-	1969-71	103,322,268	28,115,191	180,383	0.27211	0.00175	45.88	
1972	39,853,275	39,989,465	272,380	-	0.00681	-	-	1970-72	118,204,398	2,009,834	180,383	0.01700	0.00153	196.32	
1973	40,125,655	40,157,539	63,768	-	0.00159	-	-	1971-73	119,643,738	1,049,230	-	0.00877	-	-	
1974	40,189,423	40,220,993	63,140	-	0.00157	-	-	1972-74	120,367,997	399,288	-	0.00332	-	-	
1975	40,252,563	40,380,410	336,271	80,678	0.00833	0.00200	245.31	1973-75	120,758,942	463,179	80,678	0.00384	0.00067	625.08	
1976	40,508,256	40,544,272	74,777	2,746	0.00184	0.00007	2,829.41	1974-76	121,145,674	474,188	83,324	0.00391	0.00069	609.46	
1977	40,580,287	40,596,351	33,676	1,548	0.00083	0.00004	5,622.65	1975-77	121,521,032	444,724	84,872	0.00366	0.00070	625.50	
1978	40,612,415	40,631,581	45,149	6,818	0.00111	0.00017	2,315.85	1976-78	121,772,203	153,602	11,112	0.00126	0.00009	2,947.50	
1979	40,650,746	40,955,252	1,007,454	398,443	0.02460	0.00973	64.64	1977-79	122,183,183	1,086,279	406,809	0.00889	0.00333	183.80	
1980	41,259,757	41,186,036	66,913	214,355	0.00162	0.00520	343.90	1978-80	122,772,868	1,119,516	619,616	0.00912	0.00505	147.41	
1981	41,112,315	41,761,151	1,916,304	618,632	0.04589	0.01481	38.36	1979-81	123,902,439	2,990,671	1,231,430	0.02414	0.00994	64.56	
1982	42,409,987	42,872,000	1,006,642	82,616	0.02348	0.00193	148.66	1980-82	125,819,187	2,989,859	915,603	0.02376	0.00728	76.04	
1983	43,334,013	43,592,941	1,067,481	549,626	0.02449	0.01261	56.91	1981-83	128,226,092	3,990,427	1,250,874	0.03112	0.00976	57.39	
1984	43,851,868	43,969,029	237,266	2,944	0.00540	0.00007	1,663.64	1982-84	130,433,970	2,311,389	635,186	0.01772	0.00487	107.65	
1985	44,086,190	44,346,488	528,415	7,819	0.01192	0.00018	689.92	1983-85	131,908,458	1,833,162	560,389	0.01390	0.00425	130.14	
1986	44,606,786	44,569,227	634,657	709,776	0.01424	0.01593	66.41	1984-86	132,884,744	1,400,338	720,539	0.01054	0.00542	132.29	
1987	44,531,667	44,492,960	229,683	307,098	0.00516	0.00690	167.53	1985-87	133,408,674	1,392,755	1,024,693	0.01044	0.00768	111.67	
1988	44,454,252	47,228,520	5,606,623	58,088	0.11871	0.00123	82.76	1986-88	136,290,706	6,470,963	1,074,962	0.04748	0.00789	51.68	
1989	50,002,787	50,170,072	3,103,073	2,768,504	0.06185	0.05518	17.12	1987-89	141,891,551	8,939,379	3,133,690	0.06300	0.02209	26.81	
1990	50,337,356	50,950,282	2,320,315	1,094,464	0.04554	0.02148	31.97	1988-90	148,348,873	11,030,011	3,921,056	0.07435	0.02643	22.56	
1991	51,563,207	52,526,791	2,065,521	138,353	0.03932	0.00263	98.26	1989-91	153,647,144	7,488,909	4,001,321	0.04874	0.02604	28.07	
1992	53,490,375	53,112,049	836,989	1,593,641	0.01576	0.03001	45.99	1990-92	156,589,122	5,222,825	2,826,458	0.03335	0.01805	40.76	
1993	52,733,723	53,828,275	2,739,309	550,206	0.05089	0.01022	43.85	1991-93	159,467,115	5,641,819	2,282,200	0.03538	0.01431	44.44	
1994	54,922,826	54,878,467	2,265,960	2,354,678	0.04129	0.04291	23.76	1992-94	161,818,791	5,842,258	4,498,525	0.03610	0.02780	31.56	
1995	54,834,108	55,205,306	1,186,873	444,477	0.02150	0.00805	76.01	1993-95	163,912,048	6,192,142	3,349,361	0.03778	0.02043	35.99	
1996	55,576,504	55,401,039	126,815	477,746	0.00229	0.00862	225.08	1994-96	165,484,812	3,579,648	3,276,901	0.02163	0.01980	48.32	
1997	55,225,573	59,407,012	13,047,841	4,684,964	0.21963	0.07886	7.60	1995-97	170,013,356	14,361,529	5,607,187	0.08447	0.03298	18.95	
1998	63,588,450	63,240,477	-	695,946	-	0.01100	-	1996-98	178,048,527	13,174,656	5,858,656	0.07399	0.03290	20.27	
1999	62,892,504	62,789,885	-	205,238	-	0.00327	-	1997-99	185,437,374	13,047,841	5,586,148	0.07036	0.03012	21.72	
2000	62,687,266	62,774,898	227,801	52,538	0.00363	0.00084	573.81	1998-00	188,805,260	227,801	953,722	0.00121	0.00505	405.07	
.001	62,862,529	62,815,687	47,682	141,367	0.00076	0.00225	765.10	1999-01	188,380,469	275,483	399,143	0.00146	0.00212	568.10	
2002	62,768,844	63,392,709	1,505,312	257,582	0.02375	0.00406	101.80	2000-02	188,983,293	1,780,795	451,487	0.00942	0.00239	210.76	
2003	64,016,574	68,127,153	9,648,825	1,427,668	0.14163	0.02096	18.36	2001-03	194,335,548	11,201,819	1,826,617	0.05764	0.00940	42.96	
2004	72,237,731	72,588,509	1,394,539	692,983	0.01921	0.00955	73.84	2002-04	204,108,371	12,548,676	2,378,233	0.06148	0.01165	37.36	
1963-2004	1,790,753,276	1,827,222,920	93,742,739	20,803,452	0.05130	0.01139	41.38								

Data Source:

Kentucky Power Company  
Geometric Mean 3 Year Rolling Band Analysis  
Life Indications - 314 - Turbo-Generator Units



**Kentucky Power Company  
Electric Plant In Service  
Additions, Retirements and Balances  
Account 314 - Turbo-Generator Units**



**Kentucky Power Company**  
**315 - Accessory Electrical Equipment**

KENTUCKY POWER COMPANY  
DEPRECIATION STUDY AS OF DECEMBER 31, 2004  
CALCULATION OF AVERAGE REMAINING LIFE  
BIG SANDY PLANT, ACCOUNT 315  
RETIREMENT YEARS - UNIT 1 2028; UNIT 2 2034

ANNUAL INTERIM RETIREMENT RATE 0.0040

<u>YEAR</u>	<u>AMOUNT RETIRED</u>	<u>REM. LIFE (YEARS)</u>	<u>DOLLAR YEARS</u>	<u>AVERAGE REM. LIFE</u>
2005	54,970	0.5	27,485	
2006	54,970	1.5	82,456	
2007	54,970	2.5	137,426	
2008	54,970	3.5	192,396	
2009	54,970	4.5	247,367	
2010	54,970	5.5	302,337	
2011	54,970	6.5	357,308	
2012	54,970	7.5	412,278	
2013	54,970	8.5	467,248	
2014	54,970	9.5	522,219	
2015	54,970	10.5	577,189	
2016	54,970	11.5	632,160	
2017	54,970	12.5	687,130	
2018	54,970	13.5	742,100	
2019	54,970	14.5	797,071	
2020	54,970	15.5	852,041	
2021	54,970	16.5	907,012	
2022	54,970	17.5	961,982	
2023	54,970	18.5	1,016,952	
2024	54,970	19.5	1,071,923	
2025	54,970	20.5	1,126,893	
2026	54,970	21.5	1,181,864	
2027	54,970	22.5	1,236,834	
2028	1,520,180	23.5	35,724,239	
2029	49,110	24.5	1,203,184	
2030	49,110	25.5	1,252,294	
2031	49,110	26.5	1,301,403	
2032	49,110	27.5	1,350,513	
2033	49,110	28.5	1,399,623	
2034	10,712,553	29.5	316,020,328	
<b>TOTALS</b>	<b>13,742,601</b>		<b>372,791,256</b>	<b>27.13</b>

INTERIM RETIREMENTS:

Total Plant at 12/31/04	13,742,601
Less Retirement of Unit 1 in 2028	-1,465,210
Less Final Retirement in year 2034	<u>-10,712,553</u>
Total Interim Retirements	<u>1,564,838</u>

Note:

Unit 1 Retirement at 2028 based on 65 year life span from 1963.



**SPR Results**  
**Kentucky Power Company**  
**Account: 315 - Accessory Electrical Equipment**

Curve	Life	Sum of Squared Differences	Index of Variation
<b>BAND: 1963 - 2004</b>			
L2	67	2.70E+11	8
R3	55	2.88E+11	8
S1.5	63	2.99E+11	8
S2	56	3.48E+11	9
S1	70	3.56E+11	9
L3	54	3.83E+11	9
L1.5	80	4.37E+11	10
R4	46	4.90E+11	11
R2.5	64	5.65E+11	11
L1	95	5.66E+11	11
S0.5	85	5.75E+11	11
S3	49	7.19E+11	13
S0	100	7.72E+11	13
R2	77	8.61E+11	14
L4	47	8.67E+11	14
R1.5	100	1.25E+12	17
S4	44	1.59E+12	19
R5	42	1.74E+12	20
L5	43	1.87E+12	21
L0.5	100	2.45E+12	24
S5	41	2.62E+12	24
R1	100	3.01E+12	26
S6	40	3.51E+12	28
S-0.5	100	5.88E+12	37
SQ	40	7.09E+12	40
R0.5	100	8.92E+12	45
L0	100	8.94E+12	45
O1	100	1.89E+13	66
O2	100	2.72E+13	79
O3	100	7.59E+13	132
O4	100	1.62E+14	192

Minimum Equipment Life Expectancy: 1  
 Maximum Equipment Life Expectancy: 100  
 Life Expectancy Increment: 1  
 Begin Year: 1963  
 End Year: 2004  
 Year Fit Increment: 0

**Plant Balances**

Year	Balance	Year	Balance	Year	Balance	Year	Balance
2004	13,534,849	2003	13,533,983	2002	13,877,063	2001	13,871,646
2000	13,858,183	1999	13,571,054	1998	13,563,497	1997	13,224,471
1996	12,409,590	1995	12,396,594	1994	12,452,447	1993	12,374,478
1992	12,267,914	1991	12,239,099	1990	12,145,778	1989	11,883,399
1988	11,783,175	1987	11,667,241	1986	11,574,732	1985	11,555,596
1984	11,457,836	1983	11,374,988	1982	11,292,797	1981	11,044,534
1980	10,486,281	1979	10,405,133	1978	10,364,155	1977	10,137,246
1976	10,023,312	1975	9,597,692	1974	9,597,692	1973	9,600,883
1972	9,499,406	1971	9,488,998	1970	9,132,679	1969	8,576,983
1968	2,125,689	1967	2,124,742	1966	2,120,147	1965	2,099,863
1964	2,097,598	1963	2,090,616				

**Simulated Balances**

Curve: L2                      ASL: 67                      SSD: 2.70E+11                      IV: 8

Year	Balance	Year	Balance	Year	Balance	Year	Balance
2004	13,706,403	2003	13,814,152	2002	13,676,064	2001	13,768,417
2000	13,815,945	1999	13,534,974	1998	13,607,418	1997	13,318,368
1996	12,248,304	1995	12,299,066	1994	12,322,663	1993	12,297,501
1992	12,231,623	1991	12,238,268	1990	12,174,180	1989	11,926,122
1988	11,861,511	1987	11,706,599	1986	11,616,594	1985	11,604,633
1984	11,520,255	1983	11,454,048	1982	11,381,264	1981	11,029,812
1980	10,437,657	1979	10,370,150	1978	10,341,018	1977	10,124,155
1976	10,018,691	1975	9,600,007	1974	9,605,621	1973	9,608,501
1972	9,497,705	1971	9,486,808	1970	9,132,208	1969	8,577,686
1968	2,127,216	1967	2,126,846	1966	2,122,632	1965	2,102,565
1964	2,100,403	1963	2,090,614				

Curve: R3                      ASL: 55                      SSD: 2.88E+11                      IV: 8

Year	Balance	Year	Balance	Year	Balance	Year	Balance
2004	13,745,506	2003	13,848,818	2002	13,705,215	2001	13,792,214
2000	13,833,864	1999	13,547,823	1998	13,615,240	1997	13,322,226
1996	12,248,270	1995	12,295,972	1994	12,316,814	1993	12,289,802
1992	12,222,188	1991	12,227,587	1990	12,162,057	1989	11,912,638
1988	11,846,468	1987	11,690,214	1986	11,598,794	1985	11,585,675
1984	11,500,067	1983	11,432,907	1982	11,359,303	1981	11,007,359
1980	10,414,854	1979	10,347,360	1978	10,318,558	1977	10,102,487
1976	9,998,162	1975	9,581,007	1974	9,588,449	1973	9,593,495
1972	9,485,089	1971	9,476,779	1970	9,124,789	1969	8,572,741
1968	2,123,708	1967	2,123,938	1966	2,120,368	1965	2,100,974
1964	2,099,478	1963	2,090,321				

**Curve: S1.5                      ASL: 63                      SSD: 2.99E+11                      IV: 8**

Year	Balance	Year	Balance	Year	Balance	Year	Balance
2004	13,744,881	2003	13,843,663	2002	13,697,358	2001	13,783,154
2000	13,825,085	1999	13,540,112	1998	13,609,468	1997	13,318,975
1996	12,248,109	1995	12,299,501	1994	12,323,977	1993	12,300,627
1992	12,236,479	1991	12,245,160	1990	12,182,722	1989	11,936,093
1988	11,872,429	1987	11,718,173	1986	11,628,368	1985	11,616,418
1984	11,531,569	1983	11,464,775	1982	11,390,993	1981	11,038,526
1980	10,445,177	1979	10,376,539	1978	10,346,268	1977	10,128,369
1976	10,021,947	1975	9,602,464	1974	9,607,391	1973	9,609,766
1972	9,498,565	1971	9,487,400	1970	9,132,589	1969	8,577,925
1968	2,127,345	1967	2,126,907	1966	2,122,647	1965	2,102,570
1964	2,100,399	1963	2,090,614				

**Curve: S2                      ASL: 56                      SSD: 3.48E+11                      IV: 9**

Year	Balance	Year	Balance	Year	Balance	Year	Balance
2004	13,600,206	2003	13,731,494	2002	13,614,950	2001	13,727,840
2000	13,793,804	1999	13,530,350	1998	13,618,505	1997	13,344,301
1996	12,287,151	1995	12,349,685	1994	12,383,144	1993	12,366,619
1992	12,307,419	1991	12,319,081	1990	12,257,908	1989	12,011,162
1988	11,946,051	1987	11,789,325	1986	11,695,995	1985	11,679,743
1984	11,590,082	1983	11,518,035	1982	11,438,816	1981	11,080,740
1980	10,481,826	1979	10,407,799	1978	10,372,407	1977	10,149,773
1976	10,039,042	1975	9,615,777	1974	9,617,470	1973	9,617,166
1972	9,503,839	1971	9,491,047	1970	9,135,068	1969	8,579,583
1968	2,128,415	1967	2,127,534	1966	2,122,968	1965	2,102,695
1964	2,100,433	1963	2,090,616				

**Curve: S1                      ASL: 70                      SSD: 3.56E+11                      IV: 9**

Year	Balance	Year	Balance	Year	Balance	Year	Balance
2004	13,765,891	2003	13,850,698	2002	13,692,004	2001	13,766,993
2000	13,799,584	1999	13,506,724	1998	13,569,617	1997	13,273,887
1996	12,199,090	1995	12,247,621	1994	12,270,364	1993	12,246,269
1992	12,182,118	1991	12,191,680	1990	12,130,669	1989	11,886,165
1988	11,825,030	1987	11,673,746	1986	11,587,243	1985	11,578,633
1984	11,497,406	1983	11,434,145	1982	11,364,003	1981	11,015,045
1980	10,425,057	1979	10,359,627	1978	10,332,211	1977	10,117,000
1976	10,012,916	1975	9,595,502	1974	9,602,170	1973	9,605,954
1972	9,495,880	1971	9,485,526	1970	9,131,325	1969	8,577,087
1968	2,126,814	1967	2,126,590	1966	2,122,500	1965	2,102,502
1964	2,100,384	1963	2,090,613				

**Curve: L3                      ASL: 54                      SSD: 3.83E+11                      IV: 9**

Year	Balance	Year	Balance	Year	Balance	Year	Balance
2004	13,530,828	2003	13,696,447	2002	13,607,896	2001	13,742,638
2000	13,825,187	1999	13,573,381	1998	13,668,808	1997	13,398,115
1996	12,341,511	1995	12,402,168	1994	12,432,037	1993	12,410,833
1992	12,346,364	1991	12,352,739	1990	12,286,461	1989	12,034,944
1988	11,965,443	1987	11,804,925	1986	11,708,518	1985	11,689,793
1984	11,598,169	1983	11,524,578	1982	11,444,172	1981	11,085,154
1980	10,485,518	1979	10,410,885	1978	10,374,963	1977	10,151,873
1976	10,040,725	1975	9,617,063	1974	9,618,408	1973	9,617,839
1972	9,504,332	1971	9,491,423	1970	9,135,343	1969	8,579,766
1968	2,128,515	1967	2,127,577	1966	2,122,982	1965	2,102,698
1964	2,100,433	1963	2,090,616				

Curve: L1.5 ASL: 80 SSD: 4.37E+11 IV: 10

Year	Balance	Year	Balance	Year	Balance	Year	Balance
2004	13,836,656	2003	13,912,960	2002	13,745,724	2001	13,812,242
2000	13,836,469	1999	13,535,603	1998	13,590,484	1997	13,287,073
1996	12,204,748	1995	12,246,091	1994	12,262,248	1993	12,232,046
1992	12,162,630	1991	12,167,459	1990	12,102,385	1989	11,854,332
1988	11,790,277	1987	11,636,747	1986	11,548,465	1985	11,538,791
1984	11,456,977	1983	11,393,757	1982	11,324,080	1981	10,975,975
1980	10,387,211	1979	10,323,317	1978	10,297,921	1977	10,084,990
1976	9,983,546	1975	9,568,986	1974	9,578,712	1973	9,585,782
1972	9,479,151	1971	9,472,358	1970	9,121,634	1969	8,570,642
1968	2,122,306	1967	2,122,900	1966	2,119,644	1965	2,100,512
1964	2,099,223	1963	2,090,236				

Curve: R4 ASL: 46 SSD: 4.90E+11 IV: 11

Year	Balance	Year	Balance	Year	Balance	Year	Balance
2004	13,407,771	2003	13,599,211	2002	13,531,618	2001	13,684,352
2000	13,782,584	1999	13,544,562	1998	13,651,999	1997	13,391,575
1996	12,343,366	1995	12,411,059	1994	12,446,487	1993	12,429,310
1992	12,367,407	1991	12,374,927	1990	12,308,529	1989	12,055,962
1988	11,984,737	1987	11,821,928	1986	11,722,831	1985	11,701,181
1984	11,606,602	1983	11,530,227	1982	11,447,360	1981	11,086,304
1980	10,485,035	1979	10,409,172	1978	10,372,449	1977	10,148,945
1976	10,037,717	1975	9,614,231	1974	9,615,906	1973	9,615,713
1972	9,502,581	1971	9,490,033	1970	9,134,298	1969	8,579,038
1968	2,128,016	1967	2,127,231	1966	2,122,757	1965	2,102,563
1964	2,100,365	1963	2,090,597				

Curve: R2.5 ASL: 64 SSD: 5.65E+11 IV: 11

Year	Balance	Year	Balance	Year	Balance	Year	Balance
2004	13,867,154	2003	13,939,237	2002	13,767,543	2001	13,829,665
2000	13,849,405	1999	13,544,043	1998	13,594,526	1997	13,286,769
1996	12,199,908	1995	12,236,476	1994	12,248,164	1993	12,213,657

1992	12,140,158	1991	12,141,134	1990	12,072,571	1989	11,821,400
1988	11,754,466	1987	11,598,483	1986	11,508,160	1985	11,497,018
1984	11,414,195	1983	11,350,478	1982	11,280,871	1981	10,933,305
1980	10,345,400	1979	10,282,692	1978	10,259,055	1977	10,048,325
1976	9,949,485	1975	9,537,829	1974	9,550,771	1973	9,561,461
1972	9,458,692	1971	9,456,015	1970	9,109,506	1969	8,562,667
1968	2,116,776	1967	2,118,303	1966	2,116,015	1965	2,097,895
1964	2,097,642	1963	2,089,714				

**Curve: L1 ASL: 95 SSD: 5.66E+11 IV: 11**

Year	Balance	Year	Balance	Year	Balance	Year	Balance
2004	13,887,006	2003	13,952,005	2002	13,774,735	2001	13,832,416
2000	13,848,834	1999	13,541,087	1998	13,590,033	1997	13,281,505
1996	12,194,517	1995	12,231,688	1994	12,244,274	1993	12,211,033
1992	12,138,990	1991	12,141,586	1990	12,074,715	1989	11,825,258
1988	11,760,099	1987	11,605,771	1986	11,517,058	1985	11,507,319
1984	11,425,729	1983	11,363,017	1982	11,294,183	1981	10,947,199
1980	10,359,693	1979	10,297,236	1978	10,273,529	1977	10,062,468
1976	9,963,047	1975	9,550,607	1974	9,562,562	1973	9,571,992
1972	9,467,763	1971	9,463,376	1970	9,115,026	1969	8,566,250
1968	2,119,256	1967	2,120,424	1966	2,117,740	1965	2,099,169
1964	2,098,433	1963	2,089,978				

**Curve: S0.5 ASL: 85 SSD: 5.75E+11 IV: 11**

Year	Balance	Year	Balance	Year	Balance	Year	Balance
2004	13,910,411	2003	13,972,097	2002	13,791,746	2001	13,846,589
2000	13,860,341	1999	13,550,108	1998	13,596,766	1997	13,286,212
1996	12,197,829	1995	12,234,155	1994	12,246,161	1993	12,212,459
1992	12,140,224	1991	12,142,870	1990	12,076,279	1989	11,827,340
1988	11,762,869	1987	11,609,288	1986	11,521,489	1985	11,512,752
1984	11,432,207	1983	11,370,538	1982	11,302,591	1981	10,956,415
1980	10,369,818	1979	10,308,295	1978	10,285,367	1977	10,074,936
1976	9,975,800	1975	9,563,452	1974	9,575,274	1973	9,584,165
1972	9,478,953	1971	9,473,026	1970	9,122,451	1969	8,570,890
1968	2,122,235	1967	2,123,207	1966	2,120,210	1965	2,101,180
1964	2,099,800	1963	2,090,486				

**Curve: S3 ASL: 49 SSD: 7.19E+11 IV: 13**

Year	Balance	Year	Balance	Year	Balance	Year	Balance
2004	13,467,564	2003	13,658,413	2002	13,593,415	2001	13,750,022
2000	13,852,342	1999	13,618,078	1998	13,728,667	1997	13,470,657
1996	12,424,177	1995	12,492,490	1994	12,527,409	1993	12,508,634
1992	12,444,077	1991	12,448,152	1990	12,377,650	1989	12,120,347
1988	12,043,930	1987	11,875,640	1986	11,770,930	1985	11,743,752
1984	11,643,818	1983	11,562,337	1982	11,474,695	1981	11,109,264
1980	10,504,065	1979	10,424,762	1978	10,385,043	1977	10,158,977

1976	10,045,584	1975	9,620,307	1974	9,620,520	1973	9,619,152
1972	9,505,088	1971	9,491,806	1970	9,135,502	1969	8,579,813
1968	2,128,524	1967	2,127,577	1966	2,122,982	1965	2,102,698
1964	2,100,433	1963	2,090,616				

**Curve: S0 ASL: 100 SSD: 7.72E+11 IV: 13**

Year	Balance	Year	Balance	Year	Balance	Year	Balance
2004	13,914,269	2003	13,967,949	2002	13,780,260	2001	13,828,419
2000	13,836,126	1999	13,520,539	1998	13,562,483	1997	13,247,747
1996	12,155,713	1995	12,188,953	1994	12,198,466	1993	12,162,971
1992	12,089,472	1991	12,091,348	1990	12,024,451	1989	11,775,648
1988	11,711,780	1987	11,559,308	1986	11,472,966	1985	11,466,012
1984	11,387,535	1983	11,328,193	1982	11,262,872	1981	10,919,523
1980	10,335,872	1979	10,277,396	1978	10,257,594	1977	10,050,328
1976	9,954,469	1975	9,545,342	1974	9,560,264	1973	9,572,085
1972	9,469,559	1971	9,466,031	1970	9,117,533	1969	8,567,466
1968	2,119,783	1967	2,121,404	1966	2,118,983	1965	2,100,450
1964	2,099,473	1963	2,090,398				

**Curve: R2 ASL: 77 SSD: 8.61E+11 IV: 14**

Year	Balance	Year	Balance	Year	Balance	Year	Balance
2004	13,962,603	2003	14,016,273	2002	13,827,993	2001	13,875,088
2000	13,881,349	1999	13,563,835	1998	13,603,549	1997	13,286,326
1996	12,190,794	1995	12,219,798	1994	12,224,959	1993	12,184,928
1992	12,106,797	1991	12,104,076	1990	12,032,611	1989	11,779,183
1988	11,710,751	1987	11,553,846	1986	11,463,145	1985	11,452,160
1984	11,370,046	1983	11,307,414	1982	11,239,296	1981	10,893,575
1980	10,307,641	1979	10,247,108	1978	10,225,896	1977	10,017,830
1976	9,921,737	1975	9,512,941	1974	9,528,862	1973	9,542,613
1972	9,443,022	1971	9,443,598	1970	9,100,358	1969	8,556,626
1968	2,112,642	1967	2,114,889	1966	2,113,348	1965	2,095,982
1964	2,096,499	1963	2,089,329				

**Curve: L4 ASL: 47 SSD: 8.67E+11 IV: 14**

Year	Balance	Year	Balance	Year	Balance	Year	Balance
2004	13,459,389	2003	13,677,542	2002	13,630,561	2001	13,797,646
2000	13,904,801	1999	13,671,261	1998	13,780,044	1997	13,518,806
1996	12,468,482	1995	12,532,859	1994	12,564,067	1993	12,541,846
1992	12,474,232	1991	12,475,403	1990	12,402,207	1989	12,142,332
1988	12,063,405	1987	11,892,640	1986	11,785,512	1985	11,755,956
1984	11,653,786	1983	11,570,254	1982	11,480,828	1981	11,113,903
1980	10,507,496	1979	10,427,246	1978	10,386,793	1977	10,160,154
1976	10,046,341	1975	9,620,762	1974	9,620,770	1973	9,619,282
1972	9,505,151	1971	9,491,833	1970	9,135,514	1969	8,579,818
1968	2,128,524	1967	2,127,577	1966	2,122,982	1965	2,102,698
1964	2,100,433	1963	2,090,616				

**Curve: R1.5                      ASL: 100                      SSD: 1.25E+12                      IV: 17**

Year	Balance	Year	Balance	Year	Balance	Year	Balance
2004	14,030,899	2003	14,070,505	2002	13,869,267	2001	13,904,422
2000	13,899,896	1999	13,572,596	1998	13,603,395	1997	13,278,142
1996	12,175,226	1995	12,197,385	1994	12,196,519	1993	12,151,337
1992	12,068,796	1991	12,062,344	1990	11,987,884	1989	11,732,093
1988	11,661,826	1987	11,503,642	1986	11,412,263	1985	11,401,102
1984	11,319,304	1983	11,257,514	1982	11,190,691	1981	10,846,592
1980	10,262,484	1979	10,204,043	1978	10,185,256	1977	9,979,903
1976	9,886,836	1975	9,481,230	1974	9,500,508	1973	9,517,943
1972	9,422,283	1971	9,426,978	1970	9,088,010	1969	8,548,548
1968	2,107,116	1967	2,110,260	1966	2,109,674	1965	2,093,302
1964	2,094,854	1963	2,088,771				

**Curve: S4                      ASL: 44                      SSD: 1.59E+12                      IV: 19**

Year	Balance	Year	Balance	Year	Balance	Year	Balance
2004	13,289,075	2003	13,585,054	2002	13,606,275	2001	13,830,241
2000	13,982,344	1999	13,782,341	1998	13,913,211	1997	13,663,398
1996	12,615,853	1995	12,675,857	1994	12,697,190	1993	12,661,403
1992	12,578,300	1991	12,563,261	1990	12,474,191	1989	12,199,640
1988	12,107,733	1987	11,925,890	1986	11,809,712	1985	11,773,082
1984	11,665,522	1983	11,578,051	1982	11,485,817	1981	11,116,958
1980	10,509,251	1979	10,428,166	1978	10,387,215	1977	10,160,319
1976	10,046,389	1975	9,620,771	1974	9,620,771	1973	9,619,282
1972	9,505,151	1971	9,491,833	1970	9,135,514	1969	8,579,818
1968	2,128,524	1967	2,127,577	1966	2,122,982	1965	2,102,698
1964	2,100,433	1963	2,090,616				

**Curve: R5                      ASL: 42                      SSD: 1.74E+12                      IV: 20**

Year	Balance	Year	Balance	Year	Balance	Year	Balance
2004	13,241,747	2003	13,579,687	2002	13,626,970	2001	13,864,784
2000	14,022,896	1999	13,822,157	1998	13,949,039	1997	13,694,184
1996	12,640,525	1995	12,694,847	1994	12,711,285	1993	12,671,398
1992	12,585,187	1991	12,567,907	1990	12,477,305	1989	12,201,752
1988	12,109,112	1987	11,926,855	1986	11,810,409	1985	11,773,554
1984	11,665,870	1983	11,578,301	1982	11,485,988	1981	11,117,066
1980	10,509,316	1979	10,428,200	1978	10,387,232	1977	10,160,325
1976	10,046,391	1975	9,620,771	1974	9,620,771	1973	9,619,282
1972	9,505,151	1971	9,491,833	1970	9,135,514	1969	8,579,818
1968	2,128,524	1967	2,127,577	1966	2,122,982	1965	2,102,698
1964	2,100,433	1963	2,090,616				

**Curve: L5                      ASL: 43                      SSD: 1.87E+12                      IV: 21**

Year	Balance	Year	Balance	Year	Balance	Year	Balance
2004	13,267,691	2003	13,598,868	2002	13,644,100	2001	13,883,141
2000	14,044,175	1999	13,846,867	1998	13,975,122	1997	13,720,298
1996	12,665,829	1995	12,717,877	1994	12,731,958	1993	12,689,782
1992	12,600,664	1991	12,580,759	1990	12,487,720	1989	12,209,812
1988	12,115,288	1987	11,931,452	1986	11,813,627	1985	11,775,693
1984	11,667,160	1983	11,578,991	1982	11,486,312	1981	11,117,195
1980	10,509,360	1979	10,428,212	1978	10,387,234	1977	10,160,325
1976	10,046,391	1975	9,620,771	1974	9,620,771	1973	9,619,282
1972	9,505,151	1971	9,491,833	1970	9,135,514	1969	8,579,818
1968	2,128,524	1967	2,127,577	1966	2,122,982	1965	2,102,698
1964	2,100,433	1963	2,090,616				

Curve: L0.5                      ASL: 100                      SSD: 2.45E+12                      IV: 24

Year	Balance	Year	Balance	Year	Balance	Year	Balance
2004	13,573,508	2003	13,640,964	2002	13,466,785	2001	13,528,182
2000	13,548,915	1999	13,246,011	1998	13,300,287	1997	12,997,506
1996	11,916,677	1995	11,960,530	1994	11,980,462	1993	11,955,178
1992	11,891,661	1991	11,903,318	1990	11,846,005	1989	11,606,514
1988	11,551,703	1987	11,408,093	1986	11,330,428	1985	11,332,032
1984	11,262,017	1983	11,211,030	1982	11,153,964	1981	10,818,683
1980	10,242,756	1979	10,191,792	1978	10,179,507	1977	9,979,713
1976	9,891,268	1975	9,489,445	1974	9,511,614	1973	9,530,775
1972	9,435,619	1971	9,439,437	1970	9,098,094	1969	8,554,615
1968	2,110,857	1967	2,114,130	1966	2,113,377	1965	2,096,510
1964	2,097,174	1963	2,089,653				

Curve: S5                      ASL: 41                      SSD: 2.62E+12                      IV: 24

Year	Balance	Year	Balance	Year	Balance	Year	Balance
2004	13,018,572	2003	13,465,094	2002	13,599,857	2001	13,904,469
2000	14,107,467	1999	13,933,766	1998	14,071,932	1997	13,816,303
1996	12,754,059	1995	12,794,559	1994	12,794,954	1993	12,738,730
1992	12,637,223	1991	12,606,489	1990	12,504,884	1989	12,220,607
1988	12,121,537	1987	11,934,679	1986	11,815,103	1985	11,776,248
1984	11,667,314	1983	11,579,021	1982	11,486,316	1981	11,117,195
1980	10,509,360	1979	10,428,212	1978	10,387,234	1977	10,160,325
1976	10,046,391	1975	9,620,771	1974	9,620,771	1973	9,619,282
1972	9,505,151	1971	9,491,833	1970	9,135,514	1969	8,579,818
1968	2,128,524	1967	2,127,577	1966	2,122,982	1965	2,102,698
1964	2,100,433	1963	2,090,616				

Curve: R1                      ASL: 100                      SSD: 3.01E+12                      IV: 26

Year	Balance	Year	Balance	Year	Balance	Year	Balance
2004	13,705,428	2003	13,754,404	2002	13,562,638	2001	13,607,364
2000	13,612,573	1999	13,295,015	1998	13,335,584	1997	13,020,115
1996	11,926,531	1995	11,957,708	1994	11,965,984	1993	11,930,030



1992	11,856,768	1991	11,859,660	1990	11,794,592	1989	11,548,138
1988	11,487,149	1987	11,338,213	1986	11,256,042	1985	11,254,103
1984	11,181,531	1983	11,128,948	1982	11,071,315	1981	10,736,267
1980	10,160,856	1979	10,110,865	1978	10,100,510	1977	9,903,508
1976	9,818,677	1975	9,421,107	1974	9,448,258	1973	9,473,571
1972	9,385,743	1971	9,398,219	1970	9,066,877	1969	8,534,659
1968	2,097,606	1967	2,102,497	1966	2,103,656	1965	2,089,016
1964	2,092,289	1963	2,087,918				

**Curve: S6 ASL: 40 SSD: 3.51E+12 IV: 28**

Year	Balance	Year	Balance	Year	Balance	Year	Balance
2004	13,160,409	2003	13,654,103	2002	13,813,679	2001	14,129,438
2000	14,332,115	1999	14,144,489	1998	14,256,085	1997	13,965,140
1996	12,865,268	1995	12,871,546	1994	12,844,436	1993	12,768,507
1992	12,653,886	1991	12,615,324	1990	12,509,218	1989	12,222,615
1988	12,122,394	1987	11,935,018	1986	11,815,226	1985	11,776,288
1984	11,667,325	1983	11,579,023	1982	11,486,316	1981	11,117,195
1980	10,509,360	1979	10,428,212	1978	10,387,234	1977	10,160,325
1976	10,046,391	1975	9,620,771	1974	9,620,771	1973	9,619,282
1972	9,505,151	1971	9,491,833	1970	9,135,514	1969	8,579,818
1968	2,128,524	1967	2,127,577	1966	2,122,982	1965	2,102,698
1964	2,100,433	1963	2,090,616				

**Curve: S-0.5 ASL: 100 SSD: 5.88E+12 IV: 37**

Year	Balance	Year	Balance	Year	Balance	Year	Balance
2004	13,411,382	2003	13,473,469	2002	13,294,621	2001	13,352,055
2000	13,369,739	1999	13,064,406	1998	13,116,929	1997	12,813,115
1996	11,730,920	1995	11,773,269	1994	11,792,497	1993	11,767,267
1992	11,704,482	1991	11,717,584	1990	11,662,454	1989	11,425,660
1988	11,374,047	1987	11,234,195	1986	11,160,816	1985	11,167,360
1984	11,102,944	1983	11,058,177	1982	11,007,993	1981	10,680,015
1980	10,111,308	1979	10,067,667	1978	10,063,295	1977	9,871,891
1976	9,792,253	1975	9,399,466	1974	9,430,978	1973	9,460,193
1972	9,375,771	1971	9,391,096	1970	9,061,974	1969	8,531,237
1968	2,095,132	1967	2,100,788	1966	2,102,594	1965	2,088,468
1964	2,092,102	1963	2,087,894				

**Curve: SQ ASL: 40 SSD: 7.09E+12 IV: 40**

Year	Balance	Year	Balance	Year	Balance	Year	Balance
2004	12,980,957	2003	12,985,867	2002	14,831,703	2001	14,824,277
2000	14,777,938	1999	14,409,889	1998	14,400,960	1997	14,036,974
1996	12,897,283	1995	12,884,287	1994	12,848,901	1993	12,769,880
1992	12,654,248	1991	12,615,406	1990	12,509,233	1989	12,222,618
1988	12,122,394	1987	11,935,018	1986	11,815,226	1985	11,776,288
1984	11,667,325	1983	11,579,023	1982	11,486,316	1981	11,117,195
1980	10,509,360	1979	10,428,212	1978	10,387,234	1977	10,160,325

1976	10,046,391	1975	9,620,771	1974	9,620,771	1973	9,619,282
1972	9,505,151	1971	9,491,833	1970	9,135,514	1969	8,579,818
1968	2,128,524	1967	2,127,577	1966	2,122,982	1965	2,102,698
1964	2,100,433	1963	2,090,616				

**Curve: R0.5 ASL: 100 SSD: 8.92E+12 IV: 45**

Year	Balance	Year	Balance	Year	Balance	Year	Balance
2004	13,306,963	2003	13,366,695	2002	13,185,809	2001	13,241,528
2000	13,257,964	1999	12,951,647	1998	13,003,482	1997	12,699,300
1996	11,616,330	1995	11,657,649	1994	11,676,261	1993	11,650,798
1992	11,588,131	1991	11,601,743	1990	11,547,528	1989	11,311,910
1988	11,261,737	1987	11,123,651	1986	11,052,357	1985	11,061,407
1984	10,999,944	1983	10,958,563	1982	10,912,223	1981	10,588,391
1980	10,023,799	1979	9,984,403	1978	9,984,756	1977	9,798,482
1976	9,724,358	1975	9,337,348	1974	9,374,975	1973	9,410,938
1972	9,333,866	1971	9,357,189	1970	9,036,642	1969	8,514,830
1968	2,084,043	1967	2,091,335	1966	2,094,931	1965	2,082,751
1964	2,088,508	1963	2,086,653				

**Curve: L0 ASL: 100 SSD: 8.94E+12 IV: 45**

Year	Balance	Year	Balance	Year	Balance	Year	Balance
2004	13,143,644	2003	13,220,365	2002	13,055,911	2001	13,127,479
2000	13,158,783	1999	12,866,763	1998	12,932,209	1997	12,640,797
1996	11,571,452	1995	11,627,091	1994	11,659,256	1993	11,646,596
1992	11,596,049	1991	11,620,983	1990	11,577,197	1989	11,351,420
1988	11,310,494	1987	11,180,916	1986	11,117,400	1985	11,133,241
1984	11,077,480	1983	11,040,691	1982	10,997,691	1981	10,676,218
1980	10,113,780	1979	10,076,050	1978	10,076,749	1977	9,889,598
1976	9,813,370	1975	9,423,260	1974	9,456,608	1973	9,486,348
1972	9,401,004	1971	9,413,659	1970	9,079,859	1969	8,542,119
1968	2,101,868	1967	2,107,395	1966	2,108,705	1965	2,093,653
1964	2,095,809	1963	2,089,298				

**Curve: O1 ASL: 100 SSD: 1.89E+13 IV: 66**

Year	Balance	Year	Balance	Year	Balance	Year	Balance
2004	12,908,505	2003	12,978,992	2002	12,808,983	2001	12,875,697
2000	12,903,363	1999	12,608,284	1998	12,671,382	1997	12,378,491
1996	11,306,136	1995	11,357,593	1994	11,386,540	1993	11,371,566
1992	11,319,495	1991	11,343,827	1990	11,300,465	1989	11,075,680
1988	11,036,319	1987	10,909,086	1986	10,848,670	1985	10,868,711
1984	10,818,357	1983	10,788,170	1982	10,753,127	1981	10,440,515
1980	9,886,746	1979	9,857,942	1978	9,869,002	1977	9,693,462
1976	9,630,045	1975	9,253,593	1974	9,301,697	1973	9,348,308
1972	9,281,988	1971	9,316,163	1970	9,006,412	1969	8,495,004
1968	2,070,481	1967	2,080,174	1966	2,086,206	1965	2,076,486
1964	2,084,729	1963	2,085,389				

**Curve: O2                      ASL: 100                      SSD: 2.72E+13                      IV: 79**

Year	Balance	Year	Balance	Year	Balance	Year	Balance
2004	12,638,958	2003	12,718,820	2002	12,558,106	2001	12,634,036
2000	12,670,899	1999	12,384,887	1998	12,456,936	1997	12,172,881
1996	11,108,896	1995	11,168,371	1994	11,205,320	1993	11,198,311
1992	11,154,143	1991	11,186,331	1990	11,150,779	1989	10,933,680
1988	10,901,885	1987	10,782,127	1986	10,729,092	1985	10,756,464
1984	10,713,390	1983	10,690,419	1982	10,662,532	1981	10,356,932
1980	9,809,874	1979	9,787,568	1978	9,805,083	1977	9,635,906
1976	9,578,744	1975	9,208,381	1974	9,262,435	1973	9,314,988
1972	9,254,566	1971	9,294,586	1970	8,990,560	1969	8,484,587
1968	2,063,350	1967	2,074,357	1966	2,081,697	1965	2,073,276
1964	2,082,808	1963	2,084,751				

**Curve: O3                      ASL: 100                      SSD: 7.59E+13                      IV: 132**

Year	Balance	Year	Balance	Year	Balance	Year	Balance
2004	11,616,886	2003	11,726,887	2002	11,596,512	2001	11,702,961
2000	11,770,774	1999	11,515,644	1998	11,618,534	1997	11,365,271
1996	10,330,497	1995	10,418,044	1994	10,483,393	1993	10,505,016
1992	10,489,586	1991	10,550,655	1990	10,544,131	1989	10,355,862
1988	10,352,690	1987	10,261,470	1986	10,236,841	1985	10,292,678
1984	10,278,137	1983	10,283,689	1982	10,284,322	1981	10,006,850
1980	9,486,818	1979	9,490,814	1978	9,534,665	1977	9,391,651
1976	9,360,363	1975	9,015,308	1974	9,094,256	1973	9,171,847
1972	9,136,451	1971	9,201,466	1970	8,922,063	1969	8,439,607
1968	2,032,568	1967	2,049,154	1966	2,062,097	1965	2,059,274
1964	2,074,401	1963	2,081,948				

**Curve: O4                      ASL: 100                      SSD: 1.62E+14                      IV: 192**

Year	Balance	Year	Balance	Year	Balance	Year	Balance
2004	10,506,040	2003	10,642,452	2002	10,539,187	2001	10,673,422
2000	10,770,010	1999	10,544,030	1998	10,676,487	1997	10,453,189
1996	9,446,879	1995	9,561,933	1994	9,655,634	1993	9,706,317
1992	9,720,500	1991	9,811,779	1990	9,836,046	1989	9,678,707
1988	9,706,581	1987	9,646,662	1986	9,653,529	1985	9,741,263
1984	9,759,010	1983	9,797,132	1982	9,830,609	1981	9,585,760
1980	9,097,252	1979	9,132,106	1978	9,207,052	1977	9,095,110
1976	9,094,724	1975	8,780,042	1974	8,888,996	1973	8,996,906
1972	8,991,926	1971	9,087,413	1970	8,838,119	1969	8,384,487
1968	1,994,839	1967	2,018,223	1966	2,038,013	1965	2,042,051
1964	2,064,050	1963	2,078,496				

Kentucky Power Company  
Electric Plant In Service  
Geometric Mean Turnover Analysis

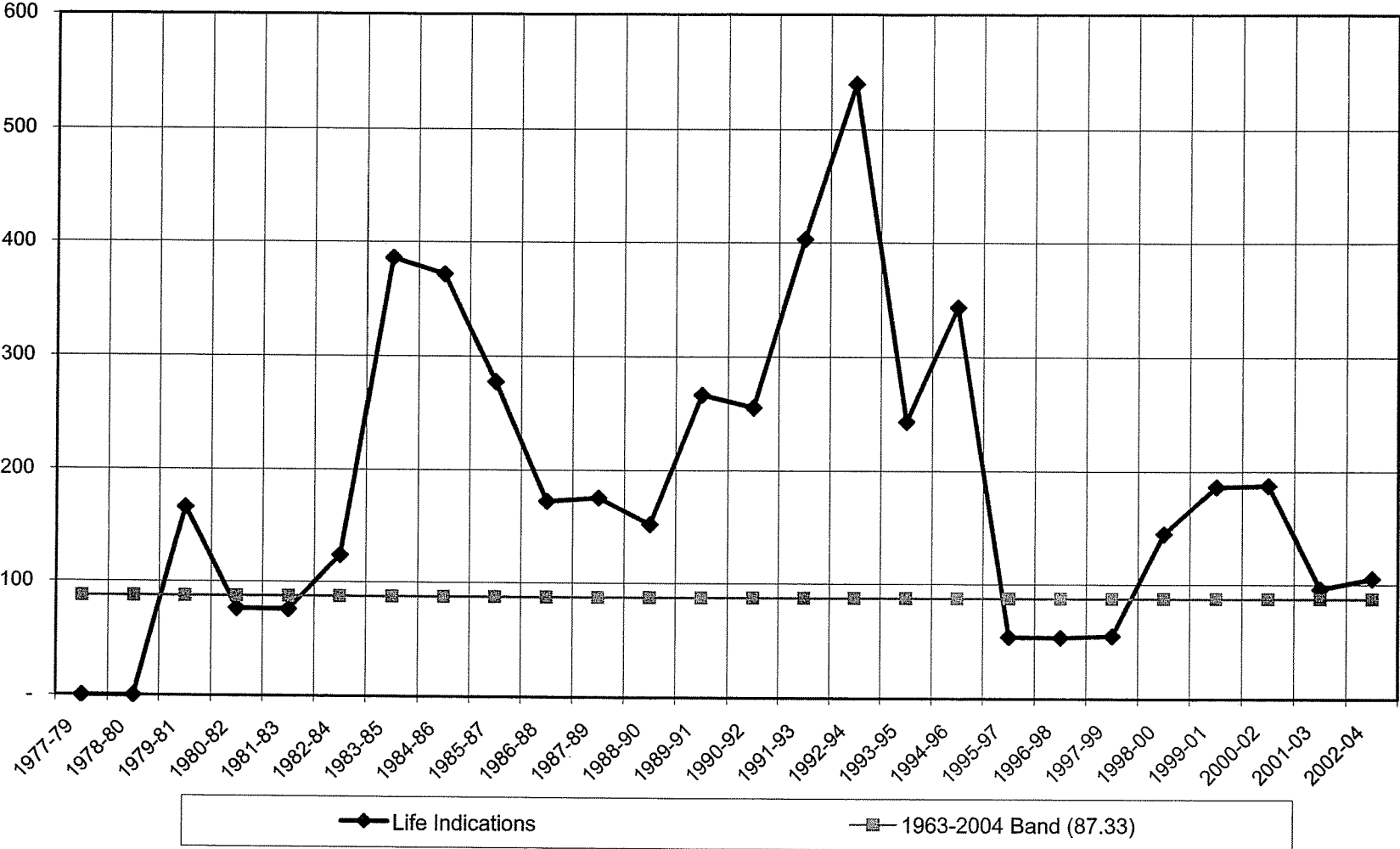
Account 315 - Accessory Electrical Equipment

3 Year Band

Year	BOY Plant Balance a	Avg. Plant Balance b=(a+(a+1))/2	Single Year Additions c	Single Year Retirements d	Addition Ratio e = c/b	Retirement Ratio f = d/b	Geometric Mean Life Estimate g = 1/sqrt(e*f)	3 Year Band h	Avg. Plant Balance i	3 Year Band		Addition Ratio l = j/i	Retirement Ratio m = k/l	Geometric Mean Life Estimate n = 1/sqrt(l*m)
										Additions j	Retirements k			
1963	-	1,045,308	2,090,616	-	2.00000	-	-	-	-	-	-	-	-	-
1964	2,090,616	2,094,107	9,817	2,835	0.00469	0.00135	396.95	-	-	-	-	-	-	-
1965	2,097,598	2,098,731	2,265	-	0.00108	-	-	1963-65	5,238,146	2,102,698	2,835	0.40142	0.00054	67.84
1966	2,099,863	2,110,005	20,284	-	0.00961	-	-	1964-66	6,302,843	32,366	2,835	0.00514	0.00045	657.98
1967	2,120,147	2,122,445	4,595	-	0.00216	-	-	1965-67	6,331,180	27,144	-	0.00429	-	-
1968	2,124,742	2,125,216	947	-	0.00045	-	-	1966-68	6,357,665	25,826	-	0.00406	-	-
1969	2,125,689	5,351,336	6,451,294	-	1.20555	-	-	1967-69	9,598,996	6,456,836	-	0.67266	-	-
1970	8,576,983	8,854,831	555,696	-	0.06276	-	-	1968-70	16,331,383	7,007,937	-	0.42911	-	-
1971	9,132,679	9,310,839	356,319	-	0.03827	-	-	1969-71	23,517,006	7,363,309	-	0.31311	-	-
1972	9,488,998	9,494,202	13,318	2,910	0.00140	0.00031	1,525.08	1970-72	27,659,872	925,333	2,910	0.03345	0.00011	533.03
1973	9,499,406	9,550,145	114,131	12,854	0.01195	0.00133	251.30	1971-73	28,355,185	483,768	15,564	0.01706	0.00055	326.78
1974	9,600,883	9,599,288	1,489	4,680	0.00016	0.00049	3,636.38	1972-74	28,643,634	128,938	20,244	0.00450	0.00071	560.65
1975	9,597,692	9,597,692	-	-	-	-	-	1973-75	28,747,124	115,620	17,334	0.00402	0.00060	642.14
1976	9,597,692	9,810,502	425,620	-	0.04338	-	-	1974-76	29,007,482	427,109	4,680	0.01472	0.00016	648.81
1977	10,023,312	10,080,279	113,934	-	0.01130	-	-	1975-77	29,488,473	539,554	-	0.01830	-	-
1978	10,137,246	10,250,701	226,909	-	0.02214	-	-	1976-78	30,141,482	766,463	-	0.02543	-	-
1979	10,364,155	10,384,644	40,978	-	0.00395	-	-	1977-79	30,715,624	381,821	-	0.01243	-	-
1980	10,405,133	10,445,707	81,148	-	0.00777	-	-	1978-80	31,081,052	349,035	-	0.01123	-	-
1981	10,486,281	10,765,408	607,835	49,582	0.05646	0.00461	62.01	1979-81	31,595,759	729,961	49,582	0.02310	0.00157	166.08
1982	11,044,534	11,168,666	369,121	120,858	0.03305	0.01082	52.88	1980-82	32,379,780	1,058,104	170,440	0.03268	0.00526	76.25
1983	11,292,797	11,333,893	92,707	10,516	0.00818	0.00093	362.99	1981-83	33,267,966	1,069,663	180,956	0.03215	0.00544	75.62
1984	11,374,988	11,416,412	88,302	5,454	0.00773	0.00048	520.22	1982-84	33,918,970	550,130	136,828	0.01622	0.00403	123.63
1985	11,457,836	11,506,716	108,963	11,203	0.00947	0.00097	329.34	1983-85	34,257,021	289,972	27,173	0.00846	0.00079	385.92
1986	11,555,596	11,565,164	38,938	19,802	0.00337	0.00171	416.50	1984-86	34,488,292	236,203	36,459	0.00685	0.00106	371.64
1987	11,574,732	11,620,987	119,792	27,283	0.01031	0.00235	203.27	1985-87	34,692,867	267,693	58,288	0.00772	0.00168	277.74
1988	11,667,241	11,725,208	187,376	71,442	0.01598	0.00609	101.34	1986-88	34,911,359	346,106	118,527	0.00991	0.00340	172.37
1989	11,783,175	11,833,287	100,224	-	0.00847	-	-	1987-89	35,179,482	407,392	98,725	0.01158	0.00281	175.42
1990	11,883,399	12,014,589	286,615	24,236	0.02386	0.00202	144.15	1988-90	35,573,084	574,215	95,678	0.01614	0.00269	151.77
1991	12,145,778	12,192,439	106,173	12,852	0.00871	0.00105	330.06	1989-91	36,040,314	493,012	37,088	0.01368	0.00103	266.53
1992	12,239,099	12,253,507	38,842	10,027	0.00317	0.00082	620.90	1990-92	36,460,534	431,630	47,115	0.01184	0.00129	255.67
1993	12,267,914	12,321,196	115,632	9,068	0.00938	0.00074	380.50	1991-93	36,767,141	260,647	31,947	0.00709	0.00087	402.92
1994	12,374,478	12,413,463	79,021	1,052	0.00637	0.00008	1,361.49	1992-94	36,988,165	233,495	20,147	0.00631	0.00054	539.29
1995	12,452,447	12,424,521	35,386	91,239	0.00285	0.00734	218.66	1993-95	37,159,179	230,039	101,359	0.00619	0.00273	243.35
1996	12,396,594	12,403,092	12,996	-	0.00105	-	-	1994-96	37,241,075	127,403	92,291	0.00342	0.00248	343.44
1997	12,409,590	12,817,031	1,139,691	324,810	0.08992	0.02534	21.07	1995-97	37,644,643	1,188,073	416,049	0.03156	0.01105	53.54
1998	13,224,471	13,393,984	363,986	24,960	0.02718	0.00186	140.52	1996-98	38,614,107	1,516,673	349,770	0.03928	0.00906	53.02
1999	13,563,497	13,567,276	8,929	1,372	0.00066	0.00010	3,876.27	1997-99	39,778,290	1,512,606	351,142	0.03803	0.00883	54.58
2000	13,571,054	13,714,619	368,049	80,920	0.02684	0.00590	79.47	1998-00	40,675,878	740,964	107,252	0.01822	0.00264	144.29
2001	13,858,183	13,864,915	46,339	32,876	0.00334	0.00237	355.23	1999-01	41,146,809	423,317	115,168	0.01029	0.00280	186.35
2002	13,871,646	13,874,355	7,426	2,009	0.00054	0.00014	3,592.07	2000-02	41,453,888	421,814	115,805	0.01018	0.00279	187.56
2003	13,877,063	13,705,523	244,780	587,860	0.01786	0.04289	36.13	2001-03	41,444,792	298,545	622,745	0.00720	0.01503	96.12
2004	13,533,983	13,534,416	4,907	4,041	0.00036	0.00030	3,039.39	2002-04	41,114,294	257,113	593,910	0.00625	0.01445	105.21
1963-2004	414,989,210	421,756,635	15,081,390	1,546,541	0.03576	0.00367	87.33							

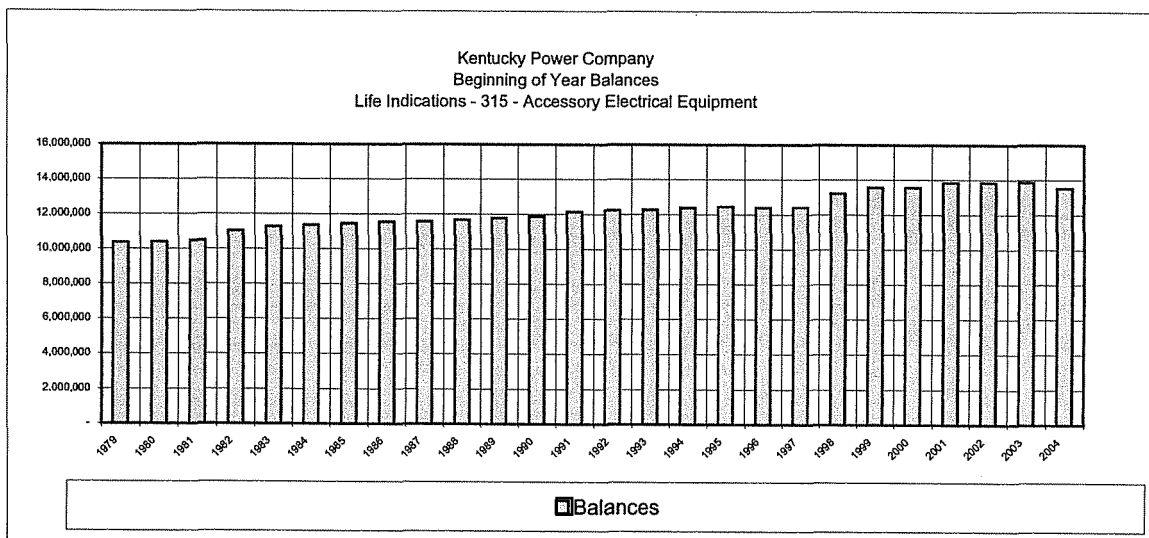
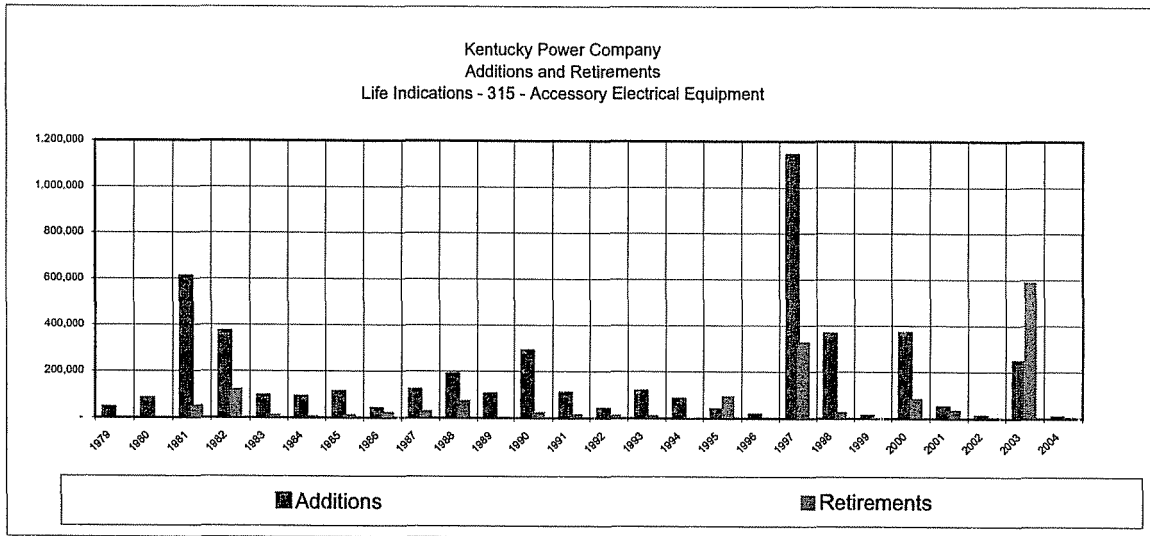
Data Source:

Kentucky Power Company  
Geometric Mean 3 Year Rolling Band Analysis  
Life Indications - 315 - Accessory Electrical Equipment



**Kentucky Power Company  
Electric Plant In Service  
Additions, Retirements and Balances**

**Account 315 - Accessory Electrical Equipment**



**Kentucky Power Company**  
**316 - Miscellaneous Power Plant Equipment**

KENTUCKY POWER COMPANY  
DEPRECIATION STUDY AS OF DECEMBER 31, 2004  
CALCULATION OF AVERAGE REMAINING LIFE  
BIG SANDY PLANT, ACCOUNT 316  
RETIREMENT YEARS - UNIT 1 2028; UNIT 2 2034

ANNUAL INTERIM RETIREMENT RATE 0.0058

<u>YEAR</u>	<u>AMOUNT RETIRED</u>	<u>REM. LIFE (YEARS)</u>	<u>DOLLAR YEARS</u>	<u>AVERAGE REM. LIFE</u>
2005	37,810	0.5	18,905	
2006	37,810	1.5	56,715	
2007	37,810	2.5	94,525	
2008	37,810	3.5	132,335	
2009	37,810	4.5	170,145	
2010	37,810	5.5	207,955	
2011	37,810	6.5	245,765	
2012	37,810	7.5	283,574	
2013	37,810	8.5	321,384	
2014	37,810	9.5	359,194	
2015	37,810	10.5	397,004	
2016	37,810	11.5	434,814	
2017	37,810	12.5	472,624	
2018	37,810	13.5	510,434	
2019	37,810	14.5	548,244	
2020	37,810	15.5	586,054	
2021	37,810	16.5	623,864	
2022	37,810	17.5	661,674	
2023	37,810	18.5	699,484	
2024	37,810	19.5	737,294	
2025	37,810	20.5	775,104	
2026	37,810	21.5	812,914	
2027	37,810	22.5	850,723	
2028	828,981	23.5	19,481,052	
2029	33,221	24.5	813,918	
2030	33,221	25.5	847,139	
2031	33,221	26.5	880,360	
2032	33,221	27.5	913,581	
2033	33,221	28.5	946,803	
2034	4,654,239	29.5	137,300,047	
<b>TOTALS</b>	<b>6,518,954</b>		<b>171,183,628</b>	<b>26.26</b>

INTERIM RETIREMENTS:

Total Plant at 12/31/04	6,518,954
Less Retirement of Unit 1 in 2028	-791,171
Less Final Retirement in year 2034	<u>-4,654,239</u>
Total Interim Retirements	<u>1,073,544</u>

Note:

Unit 1 Retirement at 2028 based on 65 year life span from 1963.



**SPR Results**  
**Kentucky Power Company**  
**Account: 316 - Miscellaneous Power Plant Equipment**

Curve	Life	Sum of Squared Differences	Index of of Variation
<b>BAND: 1963 - 2004</b>			
L1	66	6.31E+10	10
S0.5	58	6.35E+10	11
R2	51	6.80E+10	11
S0	66	6.98E+10	11
L0.5	77	7.73E+10	12
L1.5	58	8.54E+10	12
R2.5	47	9.62E+10	13
R1.5	59	9.97E+10	13
S1	52	1.04E+11	13
L0	92	1.08E+11	14
S-0.5	83	1.37E+11	15
R1	71	1.44E+11	16
S1.5	48	1.72E+11	17
R0.5	89	1.85E+11	18
L2	52	1.91E+11	18
R3	43	2.21E+11	20
O1	100	2.66E+11	21
S2	46	3.25E+11	24
L3	46	5.01E+11	30
O2	100	5.23E+11	30
R4	40	6.52E+11	34
S3	42	6.88E+11	35
L4	41	9.23E+11	40
S4	40	1.32E+12	48
R5	39	1.56E+12	52
L5	39	1.59E+12	53
S5	39	1.99E+12	59
S6	38	2.49E+12	66
SQ	36	3.11E+12	74
O3	100	3.55E+12	79
O4	100	1.09E+13	137

Minimum Equipment Life Expectancy: 1  
 Maximum Equipment Life Expectancy: 100  
 Life Expectancy Increment: 1  
 Begin Year: 1963  
 End Year: 2004  
 Year Fit Increment: 0

**Plant Balances**

<b>Year</b>	<b>Balance</b>	<b>Year</b>	<b>Balance</b>	<b>Year</b>	<b>Balance</b>	<b>Year</b>	<b>Balance</b>
2004	6,806,675	2003	6,172,988	2002	5,792,962	2001	5,764,219
2000	5,709,487	1999	5,645,234	1998	5,614,657	1997	5,659,112
1996	4,825,271	1995	4,794,817	1994	4,808,004	1993	4,140,503
1992	4,119,836	1991	4,062,934	1990	4,025,332	1989	4,001,595
1988	3,837,651	1987	3,821,063	1986	3,801,603	1985	3,704,204
1984	3,605,096	1983	3,532,611	1982	3,541,257	1981	3,473,748
1980	3,359,914	1979	3,358,017	1978	3,337,925	1977	3,328,160
1976	3,275,044	1975	3,260,556	1974	3,129,900	1973	3,167,047
1972	3,075,165	1971	3,016,823	1970	2,929,597	1969	2,733,862
1968	1,048,753	1967	1,040,774	1966	1,038,824	1965	1,023,414
1964	1,017,738	1963	1,013,821				

**Simulated Balances**

**Curve: L1                      ASL: 66                      SSD: 6.31E+10                      IV: 10**

<b>Year</b>	<b>Balance</b>	<b>Year</b>	<b>Balance</b>	<b>Year</b>	<b>Balance</b>	<b>Year</b>	<b>Balance</b>
2004	6,788,670	2003	6,140,090	2002	5,745,645	2001	5,724,461
2000	5,710,048	1999	5,688,963	1998	5,699,243	1997	5,732,858
1996	4,905,401	1995	4,901,925	1994	4,845,272	1993	4,074,792
1992	4,084,912	1991	3,987,486	1990	3,974,552	1989	3,967,524
1988	3,823,206	1987	3,818,035	1986	3,808,689	1985	3,721,319
1984	3,639,928	1983	3,580,094	1982	3,591,041	1981	3,484,858
1980	3,382,050	1979	3,377,560	1978	3,364,464	1977	3,337,950
1976	3,281,009	1975	3,269,348	1974	3,145,280	1973	3,151,924
1972	3,064,679	1971	3,011,828	1970	2,927,697	1969	2,727,571
1968	1,044,064	1967	1,037,776	1966	1,037,030	1965	1,022,711
1964	1,018,213	1963	1,013,376				

**Curve: S0.5                      ASL: 58                      SSD: 6.35E+10                      IV: 11**

<b>Year</b>	<b>Balance</b>	<b>Year</b>	<b>Balance</b>	<b>Year</b>	<b>Balance</b>	<b>Year</b>	<b>Balance</b>
2004	6,786,021	2003	6,138,452	2002	5,744,874	2001	5,724,298
2000	5,710,099	1999	5,688,877	1998	5,698,692	1997	5,731,470
1996	4,903,101	1995	4,898,837	1994	4,841,273	1993	4,069,976
1992	4,079,635	1991	3,981,777	1990	3,968,575	1989	3,961,295
1988	3,816,944	1987	3,811,822	1986	3,802,696	1985	3,715,585
1984	3,634,704	1983	3,575,419	1982	3,587,062	1981	3,481,579
1980	3,379,662	1979	3,376,026	1978	3,363,845	1977	3,338,157
1976	3,282,030	1975	3,271,010	1974	3,147,518	1973	3,154,558
1972	3,067,518	1971	3,014,582	1970	2,930,110	1969	2,729,304
1968	1,045,362	1967	1,039,138	1966	1,038,366	1965	1,023,872
1964	1,019,063	1963	1,013,728				

<b>Curve: R2</b>		<b>ASL: 51</b>		<b>SSD: 6.80E+10</b>		<b>IV: 11</b>	
<b>Year</b>	<b>Balance</b>	<b>Year</b>	<b>Balance</b>	<b>Year</b>	<b>Balance</b>	<b>Year</b>	<b>Balance</b>
2004	6,763,909	2003	6,122,068	2002	5,732,767	2001	5,715,543
2000	5,704,197	1999	5,685,391	1998	5,697,288	1997	5,731,979
1996	4,904,745	1995	4,900,678	1994	4,843,138	1993	4,071,104
1992	4,079,196	1991	3,979,593	1990	3,964,497	1989	3,955,312
1988	3,808,967	1987	3,801,805	1986	3,790,772	1985	3,701,854
1984	3,619,224	1983	3,558,313	1982	3,568,589	1981	3,461,954
1980	3,359,031	1979	3,354,654	1978	3,342,097	1977	3,316,380
1976	3,260,590	1975	3,250,311	1974	3,127,899	1973	3,136,378
1972	3,051,211	1971	3,000,562	1970	2,918,783	1969	2,721,015
1968	1,039,057	1967	1,033,561	1966	1,033,680	1965	1,020,273
1964	1,016,730	1963	1,012,879				

<b>Curve: S0</b>		<b>ASL: 66</b>		<b>SSD: 6.98E+10</b>		<b>IV: 11</b>	
<b>Year</b>	<b>Balance</b>	<b>Year</b>	<b>Balance</b>	<b>Year</b>	<b>Balance</b>	<b>Year</b>	<b>Balance</b>
2004	6,827,366	2003	6,173,039	2002	5,773,069	2001	5,746,521
2000	5,726,809	1999	5,700,476	1998	5,705,541	1997	5,733,873
1996	4,901,325	1995	4,893,182	1994	4,832,051	1993	4,057,520
1992	4,064,283	1991	3,963,965	1990	3,948,688	1989	3,939,765
1988	3,794,090	1987	3,788,059	1986	3,778,346	1985	3,691,021
1984	3,610,172	1983	3,551,278	1982	3,563,565	1981	3,459,011
1980	3,358,194	1979	3,355,942	1978	3,345,287	1977	3,321,302
1976	3,266,948	1975	3,257,830	1974	3,136,208	1973	3,145,126
1972	3,059,860	1971	3,008,614	1970	2,925,579	1969	2,725,927
1968	1,042,792	1967	1,037,239	1966	1,037,067	1965	1,023,123
1964	1,018,739	1963	1,013,660				

<b>Curve: L0.5</b>		<b>ASL: 77</b>		<b>SSD: 7.73E+10</b>		<b>IV: 12</b>	
<b>Year</b>	<b>Balance</b>	<b>Year</b>	<b>Balance</b>	<b>Year</b>	<b>Balance</b>	<b>Year</b>	<b>Balance</b>
2004	6,831,909	2003	6,176,653	2002	5,775,577	2001	5,747,974
2000	5,727,413	1999	5,700,458	1998	5,705,145	1997	5,733,297
1996	4,900,426	1995	4,891,752	1994	4,830,180	1993	4,054,937
1992	4,060,728	1991	3,959,465	1990	3,943,269	1989	3,933,430
1988	3,786,909	1987	3,780,008	1986	3,769,512	1985	3,681,426
1984	3,599,915	1983	3,540,326	1982	3,552,074	1981	3,447,050
1980	3,345,862	1979	3,343,280	1978	3,332,553	1977	3,308,635
1976	3,254,546	1975	3,245,873	1974	3,124,961	1973	3,134,726
1972	3,050,587	1971	3,000,699	1970	2,919,257	1969	2,721,234
1968	1,039,189	1967	1,034,063	1966	1,034,425	1965	1,021,125
1964	1,017,501	1963	1,013,215				

<b>Curve: L1.5</b>		<b>ASL: 58</b>		<b>SSD: 8.54E+10</b>		<b>IV: 12</b>	
--------------------	--	----------------	--	----------------------	--	---------------	--

Year	Balance	Year	Balance	Year	Balance	Year	Balance
2004	6,741,223	2003	6,101,315	2002	5,715,121	2001	5,701,612
2000	5,694,161	1999	5,679,358	1998	5,695,247	1997	5,733,764
1996	4,910,679	1995	4,911,057	1994	4,857,625	1993	4,089,806
1992	4,102,173	1991	4,006,400	1990	3,994,661	1989	3,988,310
1988	3,844,418	1987	3,839,301	1986	3,829,817	1985	3,742,030
1984	3,660,163	1983	3,599,610	1982	3,609,766	1981	3,502,641
1980	3,398,922	1979	3,393,361	1978	3,379,185	1977	3,351,474
1976	3,293,323	1975	3,280,339	1974	3,154,978	1973	3,160,280
1972	3,071,712	1971	3,017,527	1970	2,932,144	1969	2,730,833
1968	1,046,531	1967	1,039,759	1966	1,038,542	1965	1,023,749
1964	1,018,810	1963	1,013,567				

Curve: R2.5 ASL: 47 SSD: 9.62E+10 IV: 13

Year	Balance	Year	Balance	Year	Balance	Year	Balance
2004	6,741,139	2003	6,109,599	2002	5,729,661	2001	5,720,697
2000	5,716,465	1999	5,703,697	1998	5,720,649	1997	5,759,475
1996	4,935,817	1995	4,934,829	1994	4,879,676	1993	4,109,642
1992	4,119,376	1991	4,020,862	1990	4,006,378	1989	3,997,347
1988	3,850,784	1987	3,843,073	1986	3,831,151	1985	3,741,053
1984	3,657,019	1983	3,594,499	1982	3,602,969	1981	3,494,379
1980	3,389,416	1979	3,382,903	1978	3,368,106	1977	3,340,069
1976	3,281,922	1975	3,269,257	1974	3,144,483	1973	3,150,627
1972	3,063,155	1971	3,010,265	1970	2,926,312	1969	2,726,497
1968	1,043,166	1967	1,036,882	1966	1,036,225	1965	1,022,062
1964	1,017,786	1963	1,013,224				

Curve: R1.5 ASL: 59 SSD: 9.97E+10 IV: 13

Year	Balance	Year	Balance	Year	Balance	Year	Balance
2004	6,822,467	2003	6,169,686	2002	5,769,943	2001	5,743,062
2000	5,723,022	1999	5,696,478	1998	5,701,563	1997	5,730,322
1996	4,897,573	1995	4,888,330	1994	4,826,314	1993	4,050,079
1992	4,054,233	1991	3,951,269	1990	3,933,365	1989	3,921,967
1988	3,773,879	1987	3,765,410	1986	3,753,583	1985	3,664,295
1984	3,581,630	1983	3,521,037	1982	3,532,006	1981	3,426,363
1980	3,324,662	1979	3,321,773	1978	3,310,979	1977	3,287,273
1976	3,233,707	1975	3,225,842	1974	3,105,964	1973	3,117,108
1972	3,034,734	1971	2,986,940	1970	2,908,078	1969	2,713,190
1968	1,033,137	1967	1,028,642	1966	1,029,807	1965	1,017,474
1964	1,015,030	1963	1,012,305				

Curve: S1 ASL: 52 SSD: 1.04E+11 IV: 13

Year	Balance	Year	Balance	Year	Balance	Year	Balance
2004	6,731,034	2003	6,092,613	2002	5,707,773	2001	5,695,385
2000	5,688,847	1999	5,674,780	1998	5,691,289	1997	5,730,390
1996	4,908,119	1995	4,909,520	1994	4,857,197	1993	4,090,803

1992	4,104,803	1991	4,010,701	1990	4,000,666	1989	3,995,986
1988	3,853,666	1987	3,850,010	1986	3,841,822	1985	3,755,142
1984	3,674,192	1983	3,614,369	1982	3,625,045	1981	3,518,165
1980	3,414,465	1979	3,408,696	1978	3,394,077	1977	3,365,676
1976	3,306,658	1975	3,292,636	1974	3,166,083	1973	3,170,064
1972	3,080,084	1971	3,024,440	1970	2,937,567	1969	2,734,846
1968	1,049,619	1967	1,042,295	1966	1,040,496	1965	1,025,123
1964	1,019,609	1963	1,013,819				

**Curve: L0 ASL: 92 SSD: 1.08E+11 IV: 14**

Year	Balance	Year	Balance	Year	Balance	Year	Balance
2004	6,861,586	2003	6,201,473	2002	5,795,721	2001	5,763,715
2000	5,739,056	1999	5,708,275	1998	5,709,361	1997	5,734,134
1996	4,898,072	1995	4,886,383	1994	4,822,033	1993	4,044,246
1992	4,047,764	1991	3,944,523	1990	3,926,678	1989	3,915,518
1988	3,767,953	1987	3,760,290	1986	3,749,352	1985	3,661,060
1984	3,579,576	1983	3,520,284	1982	3,532,555	1981	3,428,234
1980	3,327,955	1979	3,326,474	1978	3,316,978	1977	3,294,414
1976	3,241,816	1975	3,234,682	1974	3,115,311	1973	3,126,630
1972	3,044,004	1971	2,995,497	1970	2,915,282	1969	2,718,274
1968	1,036,950	1967	1,032,379	1966	1,033,272	1965	1,020,432
1964	1,017,166	1963	1,013,126				

**Curve: S-0.5 ASL: 83 SSD: 1.37E+11 IV: 15**

Year	Balance	Year	Balance	Year	Balance	Year	Balance
2004	6,872,055	2003	6,211,221	2002	5,804,087	2001	5,770,525
2000	5,744,488	1999	5,712,562	1998	5,712,824	1997	5,737,317
1996	4,900,725	1995	4,888,036	1994	4,823,025	1993	4,044,146
1992	4,046,013	1991	3,941,175	1990	3,921,753	1989	3,909,150
1988	3,760,160	1987	3,751,083	1986	3,738,893	1985	3,649,459
1984	3,566,864	1983	3,506,516	1982	3,517,896	1981	3,412,831
1980	3,311,819	1979	3,309,721	1978	3,299,833	1977	3,277,120
1976	3,224,601	1975	3,217,809	1974	3,099,024	1973	3,111,250
1972	3,029,935	1971	2,983,160	1970	2,905,192	1969	2,711,034
1968	1,031,500	1967	1,027,391	1966	1,028,922	1965	1,016,930
1964	1,014,760	1963	1,012,231				

**Curve: R1 ASL: 71 SSD: 1.44E+11 IV: 16**

Year	Balance	Year	Balance	Year	Balance	Year	Balance
2004	6,870,696	2003	6,210,808	2002	5,804,272	2001	5,771,100
2000	5,745,389	1999	5,713,732	1998	5,714,260	1997	5,739,047
1996	4,902,579	1995	4,889,823	1994	4,824,767	1993	4,045,656
1992	4,047,082	1991	3,941,770	1990	3,921,856	1989	3,908,780
1988	3,759,302	1987	3,749,724	1986	3,737,062	1985	3,647,184
1984	3,564,158	1983	3,503,393	1982	3,514,402	1981	3,408,999
1980	3,307,674	1979	3,305,308	1978	3,295,223	1977	3,272,388

1976	3,219,814	1975	3,213,069	1974	3,094,424	1973	3,106,883
1972	3,025,923	1971	2,979,618	1970	2,902,302	1969	2,708,956
1968	1,029,927	1967	1,025,950	1966	1,027,667	1965	1,015,912
1964	1,014,076	1963	1,011,978				

**Curve: S1.5 ASL: 48 SSD: 1.72E+11 IV: 17**

Year	Balance	Year	Balance	Year	Balance	Year	Balance
2004	6,674,866	2003	6,047,161	2002	5,672,358	2001	5,669,309
2000	5,671,394	1999	5,665,217	1998	5,688,861	1997	5,734,331
1996	4,917,654	1995	4,923,866	1994	4,875,592	1993	4,112,495
1992	4,129,044	1991	4,036,782	1990	4,027,942	1989	4,023,856
1988	3,881,590	1987	3,877,510	1986	3,868,466	1985	3,780,558
1984	3,698,083	1983	3,636,498	1982	3,645,240	1981	3,536,325
1980	3,430,535	1979	3,422,675	1978	3,406,022	1977	3,375,688
1976	3,314,879	1975	3,299,241	1974	3,171,262	1973	3,174,020
1972	3,083,024	1971	3,026,565	1970	2,939,062	1969	2,735,866
1968	1,050,279	1967	1,042,683	1966	1,040,692	1965	1,025,202
1964	1,019,627	1963	1,013,820				

**Curve: R0.5 ASL: 89 SSD: 1.85E+11 IV: 18**

Year	Balance	Year	Balance	Year	Balance	Year	Balance
2004	6,894,404	2003	6,230,883	2002	5,820,777	2001	5,784,277
2000	5,755,578	1999	5,721,276	1998	5,719,494	1997	5,742,322
1996	4,903,957	1995	4,889,321	1994	4,822,636	1993	4,041,889
1992	4,041,659	1991	3,934,873	1990	3,913,647	1989	3,899,444
1988	3,748,981	1987	3,738,549	1986	3,725,210	1985	3,634,801
1984	3,551,359	1983	3,490,304	1982	3,501,168	1981	3,395,759
1980	3,294,519	1979	3,292,359	1978	3,282,633	1977	3,260,301
1976	3,208,366	1975	3,202,395	1974	3,084,633	1973	3,098,089
1972	3,018,246	1971	2,973,164	1970	2,897,170	1969	2,705,200
1968	1,027,068	1967	1,023,508	1966	1,025,687	1965	1,014,444
1964	1,013,158	1963	1,011,662				

**Curve: L2 ASL: 52 SSD: 1.91E+11 IV: 18**

Year	Balance	Year	Balance	Year	Balance	Year	Balance
2004	6,665,537	2003	6,038,764	2002	5,665,506	2001	5,664,465
2000	5,668,873	1999	5,665,188	1998	5,691,361	1997	5,739,266
1996	4,924,805	1995	4,932,897	1994	4,886,067	1993	4,123,922
1992	4,140,925	1991	4,048,620	1990	4,039,260	1989	4,034,241
1988	3,890,719	1987	3,885,176	1986	3,874,608	1985	3,785,239
1984	3,701,434	1983	3,638,665	1982	3,646,380	1981	3,536,605
1980	3,430,157	1979	3,421,860	1978	3,404,978	1977	3,374,581
1976	3,313,820	1975	3,298,294	1974	3,170,465	1973	3,173,381
1972	3,082,532	1971	3,026,202	1970	2,938,805	1969	2,735,698
1968	1,050,185	1967	1,042,641	1966	1,040,681	1965	1,025,203
1964	1,019,630	1963	1,013,820				

**Curve: R3                      ASL: 43                      SSD: 2.21E+11                      IV: 20**

Year	Balance	Year	Balance	Year	Balance	Year	Balance
2004	6,633,926	2003	6,023,519	2002	5,662,974	2001	5,671,400
2000	5,682,627	1999	5,683,411	1998	5,712,014	1997	5,760,847
1996	4,945,955	1995	4,952,528	1994	4,903,686	1993	4,139,119
1992	4,153,424	1991	4,058,563	1990	4,046,876	1989	4,039,731
1988	3,894,400	1987	3,887,324	1986	3,875,366	1985	3,784,765
1984	3,699,841	1983	3,636,014	1982	3,642,838	1981	3,532,332
1980	3,425,219	1979	3,416,369	1978	3,399,064	1977	3,368,361
1976	3,307,468	1975	3,292,014	1974	3,164,427	1973	3,167,775
1972	3,077,539	1971	3,021,942	1970	2,935,370	1969	2,733,103
1968	1,048,121	1967	1,040,879	1966	1,039,285	1965	1,024,206
1964	1,019,047	1963	1,013,636				

**Curve: O1                      ASL: 100                      SSD: 2.66E+11                      IV: 21**

Year	Balance	Year	Balance	Year	Balance	Year	Balance
2004	6,830,684	2003	6,169,019	2002	5,760,508	2001	5,725,572
2000	5,698,541	1999	5,666,010	1998	5,666,112	1997	5,690,956
1996	4,854,420	1995	4,841,399	1994	4,776,400	1993	3,997,117
1992	3,998,141	1991	3,892,652	1990	3,872,757	1989	3,859,951
1988	3,710,903	1987	3,701,902	1986	3,690,060	1985	3,601,183
1984	3,519,283	1983	3,459,786	1982	3,472,259	1981	3,368,496
1980	3,268,895	1979	3,268,403	1978	3,260,407	1977	3,239,858
1976	3,189,743	1975	3,185,634	1974	3,069,754	1973	3,085,115
1972	3,007,215	1971	2,964,091	1970	2,890,070	1969	2,700,028
1968	1,023,166	1967	1,020,274	1966	1,023,141	1965	1,012,605
1964	1,012,042	1963	1,011,286				

**Curve: S2                      ASL: 46                      SSD: 3.25E+11                      IV: 24**

Year	Balance	Year	Balance	Year	Balance	Year	Balance
2004	6,675,843	2003	6,056,875	2002	5,690,200	2001	5,694,677
2000	5,703,660	1999	5,703,716	1998	5,732,898	1997	5,783,162
1996	4,970,426	1995	4,979,781	1994	4,933,841	1993	4,172,273
1992	4,189,570	1991	4,097,275	1990	4,087,645	1989	4,082,131
1988	3,937,862	1987	3,931,269	1986	3,919,280	1985	3,828,029
1984	3,741,911	1983	3,676,490	1982	3,681,284	1981	3,568,386
1980	3,458,657	1979	3,446,942	1978	3,426,613	1977	3,392,850
1976	3,328,905	1975	3,310,458	1974	3,180,028	1973	3,180,692
1972	3,087,969	1971	3,030,134	1970	2,941,569	1969	2,737,572
1968	1,051,383	1967	1,043,330	1966	1,041,021	1965	1,025,333
1964	1,019,660	1963	1,013,821				

**Curve: L3                      ASL: 46                      SSD: 5.01E+11                      IV: 30**

Year	Balance	Year	Balance	Year	Balance	Year	Balance
2004	6,624,372	2003	6,022,799	2002	5,672,660	2001	5,692,393
2000	5,714,976	1999	5,726,699	1998	5,765,427	1997	5,823,014
1996	5,015,352	1995	5,027,696	1994	4,982,848	1993	4,220,719
1992	4,236,088	1991	4,140,804	1990	4,127,423	1989	4,117,713
1988	3,969,057	1987	3,958,100	1986	3,941,944	1985	3,846,853
1984	3,757,296	1983	3,688,878	1982	3,691,121	1981	3,576,099
1980	3,464,640	1979	3,451,543	1978	3,430,119	1977	3,395,495
1976	3,330,877	1975	3,311,905	1974	3,181,072	1973	3,181,437
1972	3,088,500	1971	3,030,514	1970	2,941,838	1969	2,737,752
1968	1,051,487	1967	1,043,380	1966	1,041,038	1965	1,025,336
1964	1,019,660	1963	1,013,821				

Curve: O2 ASL: 100 SSD: 5.23E+11 IV: 30

Year	Balance	Year	Balance	Year	Balance	Year	Balance
2004	6,729,944	2003	6,072,804	2002	5,668,467	2001	5,637,547
2000	5,614,492	1999	5,585,898	1998	5,589,905	1997	5,618,640
1996	4,785,725	1995	4,776,048	1994	4,714,350	1993	3,938,093
1992	3,941,890	1991	3,839,129	1990	3,821,908	1989	3,811,753
1988	3,665,291	1987	3,658,816	1986	3,649,480	1985	3,563,066
1984	3,483,562	1983	3,426,405	1982	3,441,192	1981	3,339,703
1980	3,242,301	1979	3,243,967	1978	3,238,112	1977	3,219,684
1976	3,171,656	1975	3,169,607	1974	3,055,736	1973	3,073,065
1972	2,997,100	1971	2,955,861	1970	2,883,678	1969	2,695,381
1968	1,019,684	1967	1,017,438	1966	1,020,947	1965	1,011,046
1964	1,011,110	1963	1,010,977				

Curve: R4 ASL: 40 SSD: 6.52E+11 IV: 34

Year	Balance	Year	Balance	Year	Balance	Year	Balance
2004	6,524,176	2003	5,952,251	2002	5,626,392	2001	5,665,438
2000	5,702,607	1999	5,724,591	1998	5,770,018	1997	5,831,759
1996	5,026,790	1995	5,040,938	1994	4,997,330	1993	4,235,983
1992	4,251,749	1991	4,156,567	1990	4,143,038	1989	4,132,860
1988	3,983,441	1987	3,971,459	1986	3,954,060	1985	3,857,593
1984	3,766,566	1983	3,696,620	1982	3,697,345	1981	3,580,875
1980	3,468,092	1979	3,453,862	1978	3,431,497	1977	3,396,130
1976	3,330,965	1975	3,311,624	1974	3,180,575	1973	3,180,846
1972	3,087,891	1971	3,029,935	1970	2,941,331	1969	2,737,344
1968	1,051,180	1967	1,043,163	1966	1,040,900	1965	1,025,256
1964	1,019,621	1963	1,013,810				

Curve: S3 ASL: 42 SSD: 6.88E+11 IV: 35

Year	Balance	Year	Balance	Year	Balance	Year	Balance
2004	6,550,461	2003	5,962,339	2002	5,624,531	2001	5,655,518
2000	5,688,463	1999	5,709,533	1998	5,756,827	1997	5,822,247
1996	5,021,686	1995	5,040,393	1994	5,001,039	1993	4,243,460



1992	4,262,538	1991	4,169,971	1990	4,158,423	1989	4,149,606
1988	4,000,865	1987	3,989,044	1986	3,971,293	1985	3,874,036
1984	3,781,938	1983	3,710,668	1982	3,709,931	1981	3,591,952
1980	3,477,639	1979	3,461,954	1978	3,438,229	1977	3,401,623
1976	3,335,369	1975	3,315,087	1974	3,183,243	1973	3,182,861
1972	3,089,374	1971	3,031,000	1970	2,942,072	1969	2,737,840
1968	1,051,509	1967	1,043,382	1966	1,041,038	1965	1,025,336
1964	1,019,660	1963	1,013,821				

Curve: L4 ASL: 41 SSD: 9.23E+11 IV: 40

Year	Balance	Year	Balance	Year	Balance	Year	Balance
2004	6,472,311	2003	5,912,347	2002	5,599,183	2001	5,651,044
2000	5,700,918	1999	5,735,047	1998	5,791,419	1997	5,862,207
1996	5,063,925	1995	5,082,209	1994	5,040,624	1993	4,279,601
1992	4,294,626	1991	4,197,896	1990	4,182,398	1989	4,169,960
1988	4,018,063	1987	4,003,485	1986	3,983,341	1985	3,884,068
1984	3,790,156	1983	3,717,361	1982	3,715,274	1981	3,596,146
1980	3,480,881	1979	3,464,404	1978	3,440,039	1977	3,402,924
1976	3,336,262	1975	3,315,663	1974	3,183,589	1973	3,183,047
1972	3,089,467	1971	3,031,042	1970	2,942,088	1969	2,737,846
1968	1,051,511	1967	1,043,382	1966	1,041,038	1965	1,025,336
1964	1,019,660	1963	1,013,821				

Curve: S4 ASL: 40 SSD: 1.32E+12 IV: 48

Year	Balance	Year	Balance	Year	Balance	Year	Balance
2004	6,496,244	2003	5,950,670	2002	5,651,007	2001	5,714,828
2000	5,774,595	1999	5,816,401	1998	5,878,187	1997	5,952,169
1996	5,154,872	1995	5,172,090	1994	5,127,407	1993	4,361,553
1992	4,370,143	1991	4,265,851	1990	4,241,982	1989	4,220,850
1988	4,060,396	1987	4,037,714	1986	4,010,261	1985	3,904,600
1984	3,805,359	1983	3,728,229	1982	3,722,790	1981	3,601,124
1980	3,484,030	1979	3,466,273	1978	3,441,061	1977	3,403,423
1976	3,336,467	1975	3,315,732	1974	3,183,604	1973	3,183,049
1972	3,089,467	1971	3,031,042	1970	2,942,088	1969	2,737,846
1968	1,051,511	1967	1,043,382	1966	1,041,038	1965	1,025,336
1964	1,019,660	1963	1,013,821				

Curve: R5 ASL: 39 SSD: 1.56E+12 IV: 52

Year	Balance	Year	Balance	Year	Balance	Year	Balance
2004	6,484,137	2003	5,967,129	2002	5,689,577	2001	5,768,299
2000	5,836,650	1999	5,881,287	1998	5,941,593	1997	6,010,646
1996	5,206,463	1995	5,215,703	1994	5,162,860	1993	4,389,340
1992	4,391,111	1991	4,281,188	1990	4,252,804	1989	4,228,319
1988	4,065,399	1987	4,041,012	1986	4,012,394	1985	3,905,960
1984	3,806,221	1983	3,728,763	1982	3,723,123	1981	3,601,320
1980	3,484,142	1979	3,466,333	1978	3,441,090	1977	3,403,436

1976	3,336,472	1975	3,315,733	1974	3,183,604	1973	3,183,049
1972	3,089,467	1971	3,031,042	1970	2,942,088	1969	2,737,846
1968	1,051,511	1967	1,043,382	1966	1,041,038	1965	1,025,336
1964	1,019,660	1963	1,013,821				

**Curve: L5 ASL: 39 SSD: 1.59E+12 IV: 53**

Year	Balance	Year	Balance	Year	Balance	Year	Balance
2004	6,354,820	2003	5,839,727	2002	5,568,034	2001	5,656,484
2000	5,738,292	1999	5,799,066	1998	5,876,366	1997	5,961,371
1996	5,170,687	1995	5,190,360	1994	5,145,159	1993	4,377,182
1992	4,383,056	1991	4,276,270	1990	4,250,252	1989	4,227,484
1988	4,065,683	1987	4,041,948	1986	4,013,592	1985	3,907,143
1984	3,807,202	1983	3,729,459	1982	3,723,542	1981	3,601,533
1980	3,484,229	1979	3,466,362	1978	3,441,097	1977	3,403,437
1976	3,336,472	1975	3,315,733	1974	3,183,604	1973	3,183,049
1972	3,089,467	1971	3,031,042	1970	2,942,088	1969	2,737,846
1968	1,051,511	1967	1,043,382	1966	1,041,038	1965	1,025,336
1964	1,019,660	1963	1,013,821				

**Curve: S5 ASL: 39 SSD: 1.99E+12 IV: 59**

Year	Balance	Year	Balance	Year	Balance	Year	Balance
2004	6,472,972	2003	5,975,414	2002	5,716,437	2001	5,811,398
2000	5,892,980	1999	5,947,136	1998	6,012,973	1997	6,083,556
1996	5,277,366	1995	5,281,558	1994	5,221,585	1993	4,439,628
1992	4,432,512	1991	4,313,966	1990	4,277,717	1989	4,246,493
1988	4,078,102	1987	4,049,505	1986	4,017,812	1985	3,909,248
1984	3,808,102	1983	3,729,776	1982	3,723,621	1981	3,601,546
1980	3,484,230	1979	3,466,362	1978	3,441,097	1977	3,403,437
1976	3,336,472	1975	3,315,733	1974	3,183,604	1973	3,183,049
1972	3,089,467	1971	3,031,042	1970	2,942,088	1969	2,737,846
1968	1,051,511	1967	1,043,382	1966	1,041,038	1965	1,025,336
1964	1,019,660	1963	1,013,821				

**Curve: S6 ASL: 38 SSD: 2.49E+12 IV: 66**

Year	Balance	Year	Balance	Year	Balance	Year	Balance
2004	6,364,985	2003	5,906,338	2002	5,677,483	2001	5,802,269
2000	5,914,363	1999	5,996,450	1998	6,081,219	1997	6,159,462
1996	5,348,936	1995	5,340,838	1994	5,265,734	1993	4,469,339
1992	4,450,897	1991	4,324,431	1990	4,283,276	1989	4,249,204
1988	4,079,347	1987	4,050,025	1986	4,018,013	1985	3,909,318
1984	3,808,124	1983	3,729,782	1982	3,723,622	1981	3,601,546
1980	3,484,230	1979	3,466,362	1978	3,441,097	1977	3,403,437
1976	3,336,472	1975	3,315,733	1974	3,183,604	1973	3,183,049
1972	3,089,467	1971	3,031,042	1970	2,942,088	1969	2,737,846
1968	1,051,511	1967	1,043,382	1966	1,041,038	1965	1,025,336
1964	1,019,660	1963	1,013,821				

<b>Curve: SQ</b>		<b>ASL: 36</b>		<b>SSD: 3.11E+12</b>		<b>IV: 74</b>	
<b>Year</b>	<b>Balance</b>	<b>Year</b>	<b>Balance</b>	<b>Year</b>	<b>Balance</b>	<b>Year</b>	<b>Balance</b>
2004	6,591,756	2003	5,901,749	2002	5,461,962	2001	5,410,381
2000	5,356,995	1999	5,298,581	1998	6,281,020	1997	6,274,475
1996	5,408,731	1995	5,368,767	1994	5,277,153	1993	4,473,493
1992	4,452,203	1991	4,324,772	1990	4,283,356	1989	4,249,219
1988	4,079,349	1987	4,050,025	1986	4,018,013	1985	3,909,318
1984	3,808,124	1983	3,729,782	1982	3,723,622	1981	3,601,546
1980	3,484,230	1979	3,466,362	1978	3,441,097	1977	3,403,437
1976	3,336,472	1975	3,315,733	1974	3,183,604	1973	3,183,049
1972	3,089,467	1971	3,031,042	1970	2,942,088	1969	2,737,846
1968	1,051,511	1967	1,043,382	1966	1,041,038	1965	1,025,336
1964	1,019,660	1963	1,013,821				

<b>Curve: O3</b>		<b>ASL: 100</b>		<b>SSD: 3.55E+12</b>		<b>IV: 79</b>	
<b>Year</b>	<b>Balance</b>	<b>Year</b>	<b>Balance</b>	<b>Year</b>	<b>Balance</b>	<b>Year</b>	<b>Balance</b>
2004	6,344,518	2003	5,703,233	2002	5,313,431	2001	5,296,561
2000	5,287,579	1999	5,273,079	1998	5,291,229	1997	5,334,231
1996	4,514,577	1995	4,517,099	1994	4,467,570	1993	3,702,419
1992	3,716,344	1991	3,623,631	1990	3,616,349	1989	3,616,145
1988	3,479,467	1987	3,482,611	1986	3,482,908	1985	3,406,030
1984	3,335,871	1983	3,287,903	1982	3,311,846	1981	3,219,416
1980	3,130,823	1979	3,141,184	1978	3,144,034	1977	3,134,288
1976	3,094,861	1975	3,101,349	1974	2,995,864	1973	3,021,451
1972	2,953,665	1971	2,920,449	1970	2,856,131	1969	2,675,344
1968	1,004,651	1967	1,005,152	1966	1,011,409	1965	1,004,246
1964	1,007,031	1963	1,009,618				

<b>Curve: O4</b>		<b>ASL: 100</b>		<b>SSD: 1.09E+13</b>		<b>IV: 137</b>	
<b>Year</b>	<b>Balance</b>	<b>Year</b>	<b>Balance</b>	<b>Year</b>	<b>Balance</b>	<b>Year</b>	<b>Balance</b>
2004	5,921,428	2003	5,295,900	2002	4,920,404	2001	4,917,418
2000	4,922,519	1999	4,922,298	1998	4,954,960	1997	5,012,790
1996	4,206,887	1995	4,222,008	1994	4,185,193	1993	3,431,593
1992	3,456,005	1991	3,373,824	1990	3,377,074	1989	3,387,544
1988	3,261,462	1987	3,275,117	1986	3,286,063	1985	3,219,827
1984	3,160,176	1983	3,122,624	1982	3,157,035	1981	3,075,044
1980	2,996,668	1979	3,017,184	1978	3,030,268	1977	3,030,797
1976	3,001,606	1975	3,018,311	1974	2,922,908	1973	2,958,465
1972	2,900,593	1971	2,877,129	1970	2,822,405	1969	2,650,803
1968	986,225	1967	990,073	1966	999,689	1965	995,880
1964	1,002,010	1963	1,007,943				

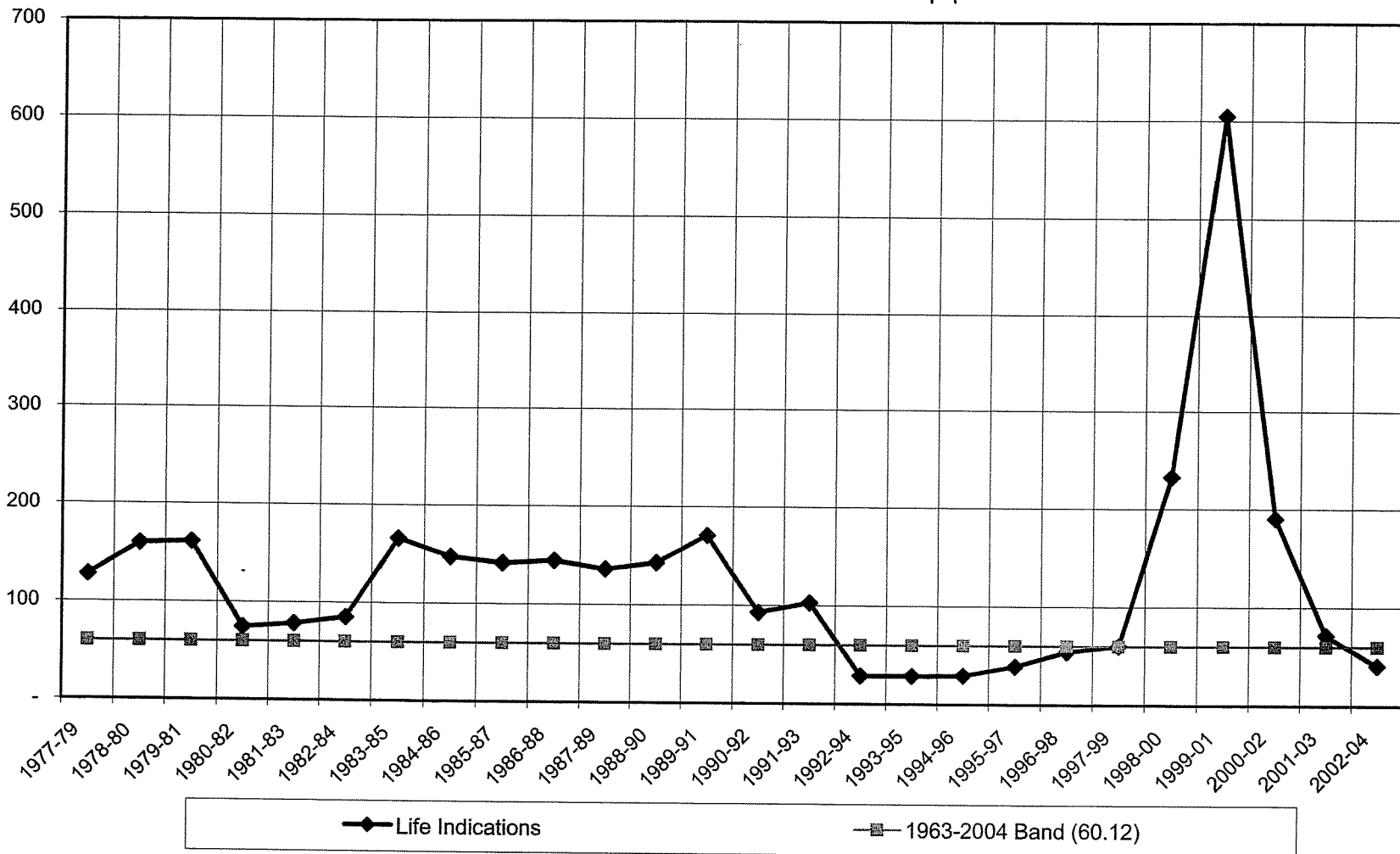
Kentucky Power Company  
Electric Plant In Service  
Geometric Mean Turnover Analysis

Account 316 - Miscellaneous Power Plant Equipment

Year	3 Year Band											Geometric		
	BOY Plant	Avg. Plant	Single Year	Single Year	Addition	Retirement	Geometric	3 Year	Avg. Plant	Additions	Retirements	Addition	Retirement	Geometric
	Balance	Balance	Additions	Retirements	Ratio	Ratio	Mean	Band	Balance	Ratio	Ratio	Ratio	Ratio	Mean
a	b=(a+(e+1))/2	c	d	e = c/b	f = d/b	g = 1/sqrt((e*f))	h	i	j	k	l = j/i	m = k/i	n	
1963	-	506,911	1,013,821	-	2.00000	-	-	-	-	-	-	-	-	-
1964	1,013,821	1,015,780	5,839	1,922	0.00576	0.00189	303.22	-	-	-	-	-	-	-
1965	1,017,738	1,020,576	5,876	-	0.00556	-	-	1963-65	2,543,266	1,025,336	1,922	0.40316	0.00076	57.29
1966	1,023,414	1,031,119	15,702	292	0.01523	0.00028	481.55	1964-66	3,067,475	27,217	2,214	0.00887	0.00072	395.16
1967	1,038,824	1,039,799	2,344	394	0.00225	0.00038	1,091.99	1965-67	3,091,494	23,722	686	0.00767	0.00022	766.36
1968	1,040,774	1,044,764	8,129	150	0.00778	0.00014	946.14	1966-68	3,115,682	26,175	836	0.00840	0.00027	666.05
1969	1,048,753	1,049,308	1,686,335	1,226	0.89162	0.00065	41.60	1967-69	3,975,870	1,696,808	1,770	0.42678	0.00045	72.55
1970	2,733,862	2,831,730	204,242	8,507	0.07213	0.00300	67.93	1968-70	5,767,801	1,898,706	9,883	0.32919	0.00171	42.11
1971	2,929,597	2,973,210	88,954	1,728	0.02992	0.00058	239.81	1969-71	7,696,247	1,979,531	11,461	0.25721	0.00149	51.10
1972	3,016,823	3,045,994	58,425	83	0.01918	0.00003	1,383.22	1970-72	8,850,934	351,621	10,318	0.03973	0.00117	146.94
1973	3,075,165	3,121,106	93,582	1,700	0.02998	0.00054	247.45	1971-73	9,140,310	240,961	3,511	0.02636	0.00038	314.25
1974	3,167,047	3,148,474	555	37,702	0.00018	0.01197	688.29	1972-74	9,315,574	152,562	39,485	0.01638	0.00424	120.02
1975	3,129,900	3,195,228	132,129	1,473	0.04135	0.00046	229.03	1973-75	9,464,808	226,266	40,875	0.02391	0.00432	98.42
1976	3,260,556	3,267,800	20,739	6,251	0.00635	0.00191	287.00	1974-76	9,611,502	153,423	45,426	0.01596	0.00473	115.13
1977	3,275,044	3,301,602	66,965	13,849	0.02028	0.00419	108.42	1975-77	9,764,630	219,833	21,573	0.02251	0.00221	141.79
1978	3,328,160	3,333,043	37,660	27,895	0.01130	0.00837	102.83	1976-78	9,902,445	125,364	47,995	0.01266	0.00485	127.66
1979	3,337,925	3,347,971	25,265	5,173	0.00755	0.00155	292.85	1977-79	9,982,616	129,890	46,917	0.01301	0.00470	127.88
1980	3,358,017	3,358,966	17,868	15,971	0.00532	0.00475	198.84	1978-80	10,039,979	80,793	49,039	0.00805	0.00488	159.51
1981	3,359,914	3,416,831	117,316	3,482	0.03433	0.00102	169.06	1979-81	10,123,768	160,449	24,626	0.01585	0.00243	161.06
1982	3,473,748	3,507,503	122,076	54,567	0.03480	0.01556	42.98	1980-82	10,283,299	257,260	74,020	0.02502	0.00720	74.52
1983	3,541,257	3,536,934	6,160	14,806	0.00174	0.00419	370.35	1981-83	10,461,268	245,552	72,855	0.02347	0.00696	78.21
1984	3,532,611	3,568,854	78,342	5,857	0.02195	0.00164	166.61	1982-84	10,613,290	206,578	75,230	0.01946	0.00709	85.14
1985	3,605,096	3,654,650	101,194	2,086	0.02769	0.00057	251.54	1983-85	10,760,438	185,696	22,749	0.01726	0.00211	165.56
1986	3,704,204	3,752,904	108,695	11,296	0.02896	0.00301	107.10	1984-86	10,976,407	288,231	19,239	0.02626	0.00175	147.40
1987	3,801,603	3,811,333	32,012	12,552	0.00840	0.00329	190.14	1985-87	11,218,887	241,901	25,934	0.02156	0.00231	141.64
1988	3,821,063	3,829,357	29,324	12,736	0.00766	0.00333	198.15	1986-88	11,393,594	170,031	36,584	0.01492	0.00321	144.46
1989	3,837,651	3,919,623	169,870	5,926	0.04334	0.00151	123.54	1987-89	11,560,313	231,206	31,214	0.02000	0.00270	136.08
1990	4,001,595	4,013,464	34,137	10,400	0.00851	0.00259	213.01	1988-90	11,762,444	233,331	29,062	0.01984	0.00247	142.84
1991	4,025,332	4,044,133	41,416	3,814	0.01024	0.00094	321.77	1989-91	11,977,220	245,423	20,140	0.02049	0.00168	170.36
1992	4,062,934	4,091,385	127,431	70,529	0.03115	0.01724	43.16	1990-92	12,148,982	202,984	84,743	0.01671	0.00698	92.63
1993	4,119,836	4,130,170	21,290	623	0.00515	0.00015	1,134.06	1991-93	12,265,688	190,137	74,966	0.01550	0.00611	102.74
1994	4,140,503	4,474,254	803,660	136,159	0.17962	0.03043	13.53	1992-94	12,695,808	952,381	207,311	0.07502	0.01633	28.49
1995	4,808,004	4,801,411	91,614	104,801	0.01908	0.02183	49.00	1993-95	13,405,834	916,564	241,583	0.06837	0.01802	28.49
1996	4,794,817	4,810,044	39,964	9,510	0.00831	0.00198	246.73	1994-96	14,085,708	935,238	250,470	0.06640	0.01778	29.10
1997	4,825,271	5,242,192	865,744	31,903	0.16515	0.00609	31.54	1995-97	14,853,646	997,322	146,214	0.06714	0.00984	38.90
1998	5,659,112	5,636,885	6,545	51,000	0.00116	0.00905	308.53	1996-98	15,689,120	912,253	92,413	0.05815	0.00589	54.03
1999	5,614,657	5,629,946	31,382	805	0.00557	0.00014	1,120.12	1997-99	16,509,022	903,671	83,708	0.05474	0.00507	60.03
2000	5,645,234	5,677,361	64,253	-	0.01132	-	-	1998-00	16,944,191	102,180	51,805	0.00603	0.00306	232.89
2001	5,709,487	5,736,853	59,062	4,330	0.01030	0.00075	358.74	1999-01	17,044,159	154,697	5,135	0.00908	0.00030	604.73
2002	5,764,219	5,778,591	67,283	38,540	0.01164	0.00667	113.48	2000-02	17,192,804	190,598	42,870	0.01109	0.00249	190.20
2003	5,792,962	5,982,975	442,131	62,105	0.07390	0.01038	36.11	2001-03	17,498,419	568,476	104,975	0.03249	0.00600	71.63
2004	6,172,988	6,469,832	698,136	64,449	0.10757	0.00993	30.60	2002-04	18,251,397	1,207,550	165,094	0.06616	0.00905	40.88
1963-2004	148,609,518	152,012,856	7,643,267	836,592	0.05028	0.00550	60.12							

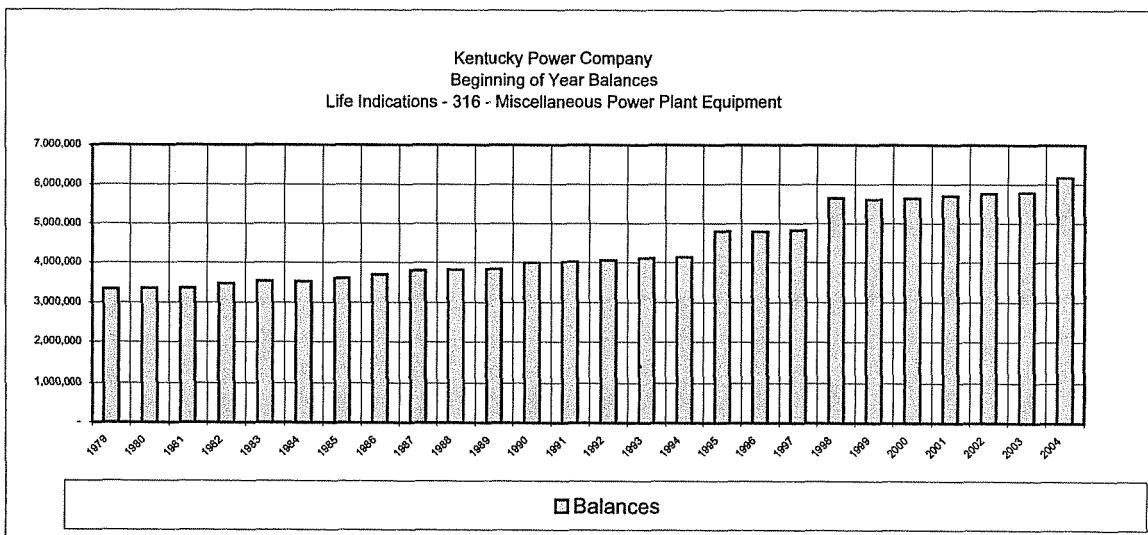
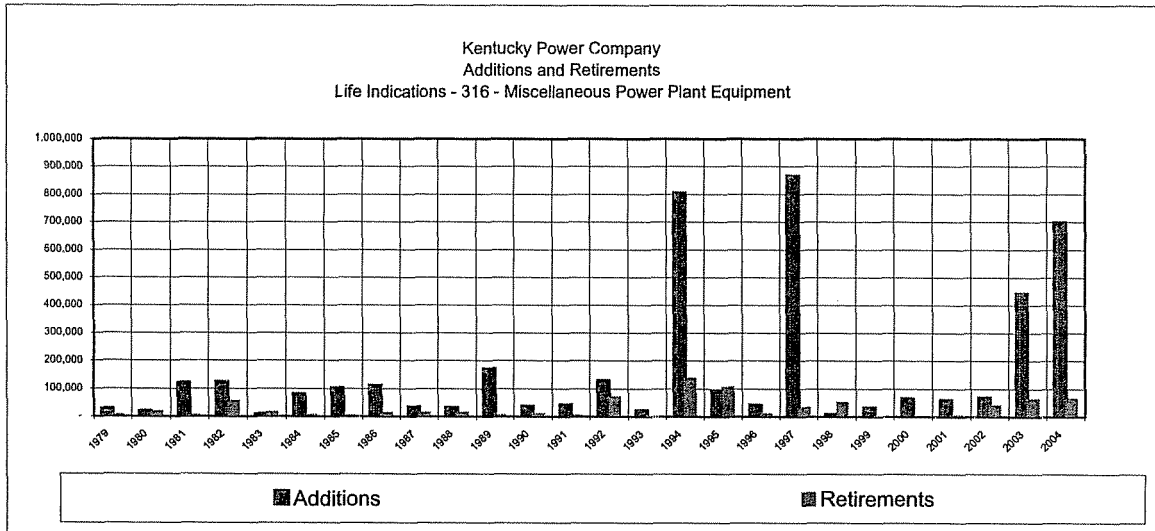
Data Source:

Kentucky Power Company  
Geometric Mean 3 Year Rolling Band Analysis  
Life Indications - 316 - Miscellaneous Power Plant Equipment



**Kentucky Power Company  
Electric Plant In Service  
Additions, Retirements and Balances**

**Account 316 - Miscellaneous Power Plant Equipment**



## **Kentucky Power Company**

# **Transmission**

## Kentucky Power Company

### 350.2 - Land Rights

#### Company Notes

-----  
An actuarial analysis was not performed on this account because of the minimal retirements. The average age of the surviving balance in the account is 21 years. The recommendation is to continue the current average service life and retirement dispersion for the account.

Any retirements from the land rights account would not be expected to produce any salvage and no removal costs should be expected to be incurred. Therefore, the recommendation is 0% for both gross removal and salvage resulting in a recommended 0% net salvage.

#### Sk Notes

lack of retirements - Use company recommendation



## Kentucky Power Company

# 352 - Structures & Improvements

### Company Notes

The average age of the retirements in this account range from 3 years to 59 years. The average age of the surviving balance in the account is 19 years. The actuarial analyses show the retirement dispersion should be moved to an S3.0 type Iowa Curve. The average service life of 55 years should be retained.

There is a possibility of receiving some salvage if substation structures were to be sold. However, the cost of removal and replacement of the buildings and fences are expected to offset any salvage that may be realized. The recommendation is for a 10% gross salvage and a 10% gross removal.

### Sk Notes

Account analyzed with Actuarial model - Use company recommendation

**Observed Life Table Results  
Kentucky Power Company  
Account: 352 - Structures & Improvements**

Age	Exposures	Retirements	Retirement Ratio (%)	Survivor Ratio (%)	Cumulative Survivors
<b>BAND</b>		<b>1923 - 2004</b>			
0	6,552,791	0	0.0000	100.0000	1.0000
0.5	6,552,791	63	0.0010	99.9990	1.0000
1.5	6,319,001	110	0.0017	99.9983	1.0000
2.5	5,511,665	1,954	0.0355	99.9645	1.0000
3.5	5,509,010	2,277	0.0413	99.9587	0.9996
4.5	5,422,452	2,208	0.0407	99.9593	0.9992
5.5	5,401,042	2,007	0.0372	99.9628	0.9988
6.5	5,340,375	2,450	0.0459	99.9541	0.9984
7.5	5,134,333	2,847	0.0555	99.9445	0.9980
8.5	4,951,372	821	0.0166	99.9834	0.9974
9.5	4,834,976	6,431	0.1330	99.8670	0.9973
10.5	4,779,358	885	0.0185	99.9815	0.9959
11.5	4,407,358	271	0.0061	99.9939	0.9957
12.5	4,293,169	8,722	0.2032	99.7968	0.9957
13.5	4,239,377	9,144	0.2157	99.7843	0.9937
14.5	4,164,438	1,540	0.0370	99.9630	0.9915
15.5	4,161,388	1,452	0.0349	99.9651	0.9911
16.5	4,154,740	0	0.0000	100.0000	0.9908
17.5	4,140,280	734	0.0177	99.9823	0.9908
18.5	3,991,137	8,208	0.2057	99.7943	0.9906
19.5	3,886,435	9,156	0.2356	99.7644	0.9886
20.5	3,761,700	880	0.0234	99.9766	0.9863
21.5	3,708,494	318	0.0086	99.9914	0.9860
22.5	3,557,171	704	0.0198	99.9802	0.9859
23.5	1,928,309	11,644	0.6038	99.3962	0.9857
24.5	1,813,848	7,708	0.4250	99.5750	0.9798
25.5	1,803,000	2,500	0.1387	99.8613	0.9756
26.5	1,800,375	5,102	0.2834	99.7166	0.9743
27.5	1,635,447	359	0.0220	99.9780	0.9715
28.5	1,547,549	1,237	0.0799	99.9201	0.9713
29.5	1,531,989	3,030	0.1978	99.8022	0.9705
30.5	374,614	37	0.0099	99.9901	0.9686
31.5	325,481	25	0.0077	99.9923	0.9685
32.5	325,456	1,985	0.6099	99.3901	0.9684
33.5	312,366	852	0.2728	99.7272	0.9625
34.5	260,894	0	0.0000	100.0000	0.9599
35.5	259,642	325	0.1252	99.8748	0.9599
36.5	227,268	200	0.0880	99.9120	0.9587
37.5	205,479	0	0.0000	100.0000	0.9579
38.5	175,555	0	0.0000	100.0000	0.9579
39.5	175,258	960	0.5478	99.4522	0.9579
40.5	165,852	1,228	0.7404	99.2596	0.9526
41.5	148,035	4,980	3.3641	96.6359	0.9456
42.5	136,083	0	0.0000	100.0000	0.9138
43.5	135,962	44	0.0324	99.9676	0.9138
44.5	133,001	33,904	25.4915	74.5085	0.9135

45.5	97,298	0	0.0000	100.0000	0.6806
46.5	92,884	0	0.0000	100.0000	0.6806
47.5	92,305	0	0.0000	100.0000	0.6806
48.5	91,924	2,428	2.6413	97.3587	0.6806
49.5	88,980	339	0.3810	99.6190	0.6626
50.5	49,847	0	0.0000	100.0000	0.6601
51.5	49,136	15,534	31.6143	68.3857	0.6601
52.5	33,510	241	0.7192	99.2808	0.4514
53.5	24,862	1,470	5.9126	94.0874	0.4482
54.5	23,392	5,704	24.3844	75.6156	0.4217
55.5	17,688	356	2.0127	97.9873	0.3188
56.5	17,332	0	0.0000	100.0000	0.3124
57.5	17,332	0	0.0000	100.0000	0.3124
58.5	17,180	352	2.0489	97.9511	0.3124
59.5	16,828	0	0.0000	100.0000	0.3060
60.5	14,691	0	0.0000	100.0000	0.3060
61.5	8,951	0	0.0000	100.0000	0.3060
62.5	1,616	0	0.0000	100.0000	0.3060
63.5	1,616	0	0.0000	100.0000	0.3060
64.5	0	0	0.0000	100.0000	0.3060
65.5	0	0	0.0000	100.0000	0.3060
66.5	0	0	0.0000	100.0000	0.3060
67.5	0	0	0.0000	100.0000	0.3060
68.5	0	0	0.0000	100.0000	0.3060
69.5	0	0	0.0000	100.0000	0.3060
70.5	0	0	0.0000	100.0000	0.3060
71.5	0	0	0.0000	100.0000	0.3060
72.5	0	0	0.0000	100.0000	0.3060
73.5	0	0	0.0000	100.0000	0.3060
74.5	0	0	0.0000	100.0000	0.3060
75.5	0	0	0.0000	100.0000	0.3060
76.5	0	0	0.0000	100.0000	0.3060
77.5	0	0	0.0000	100.0000	0.3060
78.5	0	0	0.0000	100.0000	0.3060
79.5	0	0	0.0000	100.0000	0.3060
80.5	0	0	0.0000	100.0000	0.3060
<b>BAND</b>		<b>1954 - 2004</b>			
0	6,440,295	0	0.0000	100.0000	1.0000
0.5	6,442,430	63	0.0010	99.9990	1.0000
1.5	6,216,896	110	0.0018	99.9982	1.0000
2.5	5,420,528	1,954	0.0360	99.9640	1.0000
3.5	5,417,873	2,277	0.0420	99.9580	0.9996
4.5	5,331,365	2,208	0.0414	99.9586	0.9992
5.5	5,311,726	2,007	0.0378	99.9622	0.9988
6.5	5,251,103	2,450	0.0467	99.9533	0.9984
7.5	5,045,568	2,847	0.0564	99.9436	0.9979
8.5	4,863,394	821	0.0169	99.9831	0.9974
9.5	4,749,343	6,431	0.1354	99.8646	0.9972
10.5	4,703,951	885	0.0188	99.9812	0.9959
11.5	4,339,446	271	0.0062	99.9938	0.9957
12.5	4,225,513	8,722	0.2064	99.7936	0.9956
13.5	4,175,322	9,144	0.2190	99.7810	0.9935