

ESTILL COUNTY WATER DISTRICT NO. 1
Name of Issuing Corporation

CLASSIFICATION OF SERVICE

RATE
PER UNIT

MONTHLY WATER RATES

5/8 inch x 3/4 inch meters

NUMBER OF GALLONS OF WATER OR LESS PER MONTH	MONTHLY CHARGE PER 1,000 GALLONS OR LESS PER MONTH
First 2,000 gallons or less	\$7.00 (minimum monthly charge)
Next 3,000 gallons	3.25
Next 5,000 gallons	3.15
All over 10,000 gallons	1.85

2 inch meters

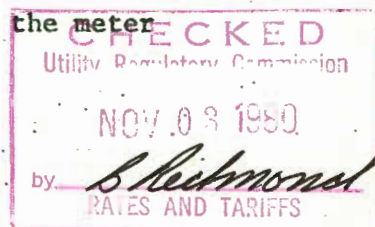
First 10,000 gallons or less	\$19.00 (minimum monthly charge)
All over 10,000 gallons	1.85

The bulk loading station rate is \$2.50 per 1,000 gallons of water regardless of the amount of water purchased

CONNECTION CHARGES

5/8 inch x 3/4 inch meter \$250.00

2 inch meter - the actual cost of installing the meter



Handwritten: 10-83

DATE OF ISSUE July 10, 1979 DATE EFFECTIVE July 10, 1979

ISSUED BY *Griffin M. Edwards* TITLE Chairman, Board of Commissioners
Name of Officer

Issued by authority of an Order of the Public Service Commission of Ky. in
Case No. 7335 dated July 10, 1979