

Linda L. Reynolds

PO Box 1356, Williamsburg, KY 40769

RECEIVED

April 12, 2018

APR 17 2018

Appalachian Wireless
101 Technology Trail
Ivel, KY 41653

PUBLIC SERVICE
COMMISSION

Public Service Commission
211 Sower Blvd.
PO Box 615
Frankfort, KY 40602-0615

Re: Case No. 2018-00095
Application of East Kentucky Network, LLC d/b/a Appalachian Wireless for Issuance of a Certificate of Public Convenience and Necessity to Construct a Cellular Tower in the Commonwealth of Kentucky in the County of Whitley

To Whom This May Concern:

This is in response to your letter dated March 29, 2018. I am requesting intervention by the Commission. The applicant's response did not satisfy my concerns. My major concern is health issues. You can send me all the documentation you can find on the web, and most of it I have read. I read this before I refused to let you put the tower on my property. However, I have lived long enough to see how these things change over time. There is research out there that lets us know there is health risks involved. I am enclosing three articles that reference health risks from cell towers. If there is even an inkling of evidence that says it poses a risk, then I do not wish to have a tower located near my home and property. Not only is it posing a risk for all of us living there now, it diminishes my property values.

I vehemently oppose this tower. I would like to request a public hearing.

Sincerely,



Linda L Reynolds



(<https://www.facebook.com/TheNewsMinute>)

(<https://twitter.com/thenewsminute>)

(<https://plus.google.com/+Thenewsminute>)

(<https://www.youtube.com/channel/UCspQiezi29iIFbCgfGisO9Q>)

Technology

Can radiation from mobile towers cause cancer? The scientific and legal debate continues

(</article/can-radiation-mobile-towers-cause-cancer-scientific-and-legal-debate-continues-60252>)

The Supreme Court recently ordered deactivation of mobile tower after a cancer-stricken man said the radiation was responsible for his ill health.

TNM Staff (<https://www.thenewsminute.com/author-articles/TNM-Staff>) |

Follow @thenewsminute (<https://twitter.com/thenewsminute>) |

Wednesday, April 12, 2017 - 19:29

([whatsapp://send?text=Can radiation from mobile towers cause cancer? The](whatsapp://send?text=Can+radiation+from+mobile+towers+cause+cancer?+The)

scientific and legal debate continues [https://www.thenewsminute.com/article/can-radiation-mobile-towers-cause-cancer-scientific-and-legal-debate-continues-](https://www.thenewsminute.com/article/can-radiation-mobile-towers-cause-cancer-scientific-and-legal-debate-continues-60252)

60252) (https://www.facebook.com/sharer/sharer.php?

u=https://www.thenewsminute.com/article/can-radiation-mobile-towers-cause-cancer-scientific-and-legal-debate-continues-60252)



(https://twitter.com/share?url=https://www.thenewsminute.com/article/can-radiation-mobile-towers-cause-cancer-scientific-and-legal-debate-continues-

60252&text=Can radiation from mobile towers cause cancer? The scientific and legal debate continues) (mailto:?Subject=TheNewsMinute&Body=Can

radiation from mobile towers cause cancer? The scientific and legal debate continues https://www.thenewsminute.com/article/can-radiation-mobile-towers-cause-cancer-scientific-and-legal-debate-continues-60252)

(https://plus.google.com/share?url=Can radiation from mobile towers cause cancer? The scientific and legal debate continues

https://www.thenewsminute.com/article/can-radiation-mobile-towers-cause-cancer-scientific-and-legal-debate-continues-60252)

(http://reddit.com/submit?url=https://www.thenewsminute.com/article/can-radiation-mobile-towers-cause-cancer-scientific-and-legal-debate-continues-60252&title=Can radiation from mobile towers cause cancer? The scientific and legal debate continues)



The NEWS Minute

(<https://www.facebook.com/TheNewsMinute>)

(<https://twitter.com/thenewsminute>)

(<https://plus.google.com/+Thenewsminute>)

(<https://www.youtube.com/channel/UCspQiegi29iIFbCgfGisO9Q>)

PTI photo

Mesothelioma Law Firm

Over 40 years of winning mesothelioma cases. We'll fight for you. baronandbudd.com



In a landmark ruling, the Supreme Court recently ordered in favour of a man who said that the radiation from a mobile tower had affected his health.

According to Dhananjay Mahapatra's report in TOI

(<http://epaperbeta.timesofindia.com/Article.aspx?eid=31809&articlexml=In-a-1st-SC-shuts-down-mobile-tower-12042017001070>), Harish Chandra Tiwari has Hodgkin's Lymphoma, a type of cancer, and he claimed that the harmful radiations from a mobile tower near his workplace affected him.

Not only did the court rule in Tiwari's favour, the SC also asked for the tower to be deactivated in a week.

At a time when there is plenty of research about radiation and how it affects the human body - and plenty that counters it - the SC's decision has thrown open the gate yet again for the debate on the health hazards posed by electromagnetic radiation.



While activists and some organisations have registered strong concerns about it, the government has continued to maintain that low Electro Magnetic Frequency (EMF) from mobile towers does not have adverse health consequences.

The debate

There are two types of radiation: ionizing and non-ionizing. The former kind is the category into which X-rays fall – these are harmful to the body and can cause cancer. Non-ionizing radiation on the other hand is a low energy radiation which generates heat. This is the category into which mobile tower radiation falls.

Over the years, there have been many studies refuting the connection between non-ionizing radiation given out by cell phone towers, and cancer. Oncologists have also said that these radiations are not carcinogenic, but not everyone from the science fraternity agrees.

For instance, Dariusz Leszczynski, a Finnish scientist on WHO's International Agency for Research on Cancer's (IARC) expert committee, said that long-term exposure to mobile phones and cell tower radiation - an average of 30 minutes per day for a decade - increases the risk of brain cancer.

WHO has also classified

(<http://edition.cnn.com/2011/HEALTH/05/31/who.cell.phones/>) EMF radiation from mobiles, mobile towers and wi-fi as category 2(B), or possibly

carcinogenic.  (/)

According to Malini Bhupta's report in Business Standard

([http://www.business-standard.com/article/economy-policy/how-damaging-is-](http://www.business-standard.com/article/economy-policy/how-damaging-is-radiation-from-mobile-towers-115082700010_1.html)

radiation-from-mobile-towers-115082700010_1.html

), the safety standards followed in India are 10 times more stringent than a majority of the world's

countries. Mobile handsets emitting over 1.6 watt/kilogram radiation are not allowed in India. This limit is called the Specific Absorption Rate or SAR.

But like Tiwari, other individuals have also alleged that exposure to cell phone towers has had serious health consequences for them.

For instance, a Hindustan Times ([http://www.hindustantimes.com/health-and-fitness/is-mobile-phone-tower-radiation-a-health-hazard/story-](http://www.hindustantimes.com/health-and-fitness/is-mobile-phone-tower-radiation-a-health-hazard/story-U36Vsl3VpIBQOgo43iyvBN.html)

[U36Vsl3VpIBQOgo43iyvBN.html](http://www.hindustantimes.com/health-and-fitness/is-mobile-phone-tower-radiation-a-health-hazard/story-U36Vsl3VpIBQOgo43iyvBN.html)) report from 2012 tells the story of a family in Jaipur. Two of its members were diagnosed with brain cancer, incidentally after three cell phone towers were erected in their neighbourhood.

Girish Kumar, a professor at IIT Bombay and one of the advocates of cell phone towers' health hazards, had told HT then, "Being exposed to a mobile tower located within 50m of your home or workplace is like being in a microwave oven for 24 hours."

Legally speaking

Tiwari's case is not the first time that the matter has been taken up by the higher judiciary. Bollywood actor Juhi Chawla has been campaigning for a more stringent mobile tower policy for many years now. She and activist Prakash Munshi filed a PIL (<https://www.linkedin.com/pulse/citizens-pil-against->

illegal-mobile-towers-hearing-soon-shirodkar) in the Bombay High Court in 2015 regarding increasing radiation levels as well as illegal towers across the country.

The NEWS Minute (/)

(<http://indiatoday.intoday.in/story/mobile-radiation-bombay-high-court-juhi-chawla/1/813095.html>) in November 2016 that there were no health hazards from mobile towers. Earlier in 2012 though, the Rajasthan High Court had held (<https://twitter.com/thenewsminute>) (<https://www.facebook.com/TheNewsMinute>) (<https://plus.google.com/+Thenewsminute>) (<https://www.youtube.com/channel/UCspQie3i29iIFbCgfGisO9Q>) (<http://www.dnaindia.com/india/report-no-mobile-towers-near-schools-hospitals-directs-rajasthan-high-court-1770422>) mobile towers as a health hazard, and asked operators in the state to remove towers in close proximity of hospitals, schools, colleges and playgrounds, or relocate them.

The matter moved to the Supreme Court where telecom operators challenged the Rajasthan High Court's order. Speaking to Kalyan Parbat and Gulveen Aulakh for Economic Times

(<http://economictimes.indiatimes.com/news/industry/telecom/cell-tower-radiation-sc-to-hear-plea-against-hc-order-banning-towers-from-public-use-buildings/articleshow/18358349.cms>), a spokesperson for the World Health Organisation (WHO) said in the regard that while the electromagnetic fields produced by mobile phones had been classified as “possibly carcinogenic”, there was no conclusive evidence to prove adverse health effects.

He conceded however that “lack of data on the impact of prolonged mobile phone use in excess of 15 years warrants further research.”

The Supreme Court ultimately upheld

(<https://ecfsapi.fcc.gov/file/7520958472.pdf>) the Rajasthan High Court's decision in June 2013.

However, concerns about the radiation from mobile phones and towers continued to be raised in the following years as well. Just last year, the apex court heard

(<http://www.deccanchronicle.com/lifestyle/health-and->

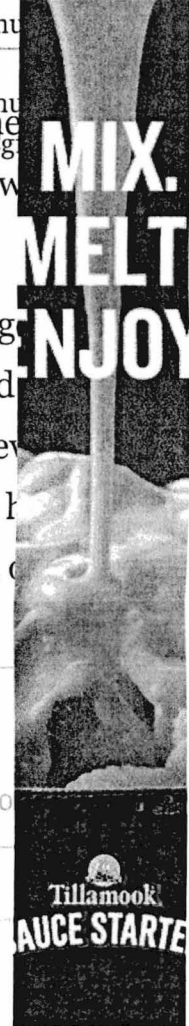
The NEWS Minute examine whether mobile towers cause radiation.html) a "batch of appeals from various High Courts relating to erection of mobile towers in towns and cities."

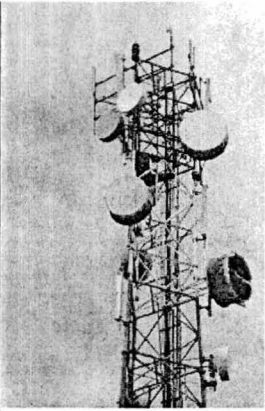
Prashant Bhushan had submitted that in cities like London, the none towers – they were erected outside the city and boosters w y. This wasn't being done in India.

one of the judges hearing the case, observed that a retired judge s book that he used mobile phones for long hours, which could of the reasons behind his cancer and subsequent death. However said that unless the lawyer could submit scientific proof about h radiation from the mobile towers, the court could not pass an c nem.

othelioma Law Firm

ears of winning mesothelioma cases. We'll fight for you. baronandbudd.co





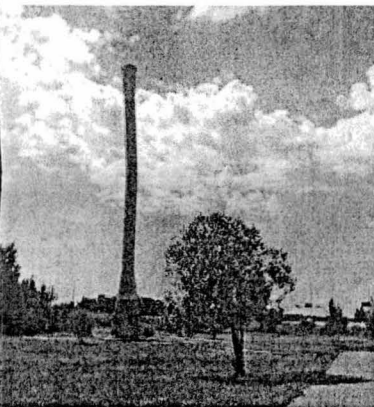
Cell Towers are the base stations which control cell (or mobile) phone communication. The term "cell site" can also be used – to include all cell phone towers, antenna masts and other base station forms.

Each cell tower serves a small area around it, known as a cell. Service providers are scrambling to improve their coverage and to service more users, so they need to keep on building more cell sites.

Increased cellphone traffic also contributes to cell tower density. When a cell becomes too busy, a frequent solution is to divide it into smaller cells, which then require more cell sites.

There are over 300,000 cell sites in the USA alone, and in the U.K. over 60,000, and these figures are more than doubling every 10 years.

Cell tower radiation from chimneys?



Cell sites may take the form of a mast or tower, but may also be disguised, in some cases so they cannot be visually discerned at all.

You might notice the camouflaged "trees", but perhaps not the cell sites on top of buildings, looking like elongated loudspeaker boxes.

You'd very likely fail to notice cell sites installed around chimneys, church steeples, even flagpoles. I have even seen a small cell site installed on the wall of a private house. No doubt the owner was collecting a useful rental, and probably had some screening from the radiation.

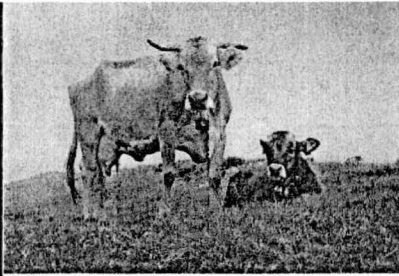
But his neighbours were unprotected.

Where a base station is installed on top of a building where people live or work, those people are usually quite unaware that there is a cell site close by, and of the high levels of radiation that they are subjected to every day.

Cell tower health dangers

The cellular phone industry continues to maintain that cell phone towers pose no health risk, but fewer people believe that these days. Almost all scientists in this field would disagree that cell towers are safe, except those employed by the industry, perhaps.

There is strong evidence that electromagnetic radiation from cell phone towers is damaging to human (and animal) health.



Example: A study into the effects of a cell tower on a herd of dairy cattle was conducted by the Bavarian state government in Germany and published in 1998.

The erection of the tower caused adverse health effects resulting in a measurable drop in milk yield.

Relocating the cattle restored the milk yield. Moving them back to the original pasture recreated the problem. [DairyCowStudy.pdf](#).

A human study (Kempton West) in 2007 measured blood levels of serotonin and melatonin (important hormones involved in brain messaging, mood, sleep regulation and immune system function) both before, and five months after, the activation of a new cell site.

Twenty-five participants lived within 300 metres of the site. Substantial unfavourable changes occurred with respect to both hormones, in almost all participants. [Kempton West Study](#).

Can Cell Towers Cause Cancer?

A study performed by doctors from the German city of Naila monitored 1000 residents who had lived in an area around two cell phone towers for 10 years. During the last 5 years of the study they found that those living within 400 meters of either tower had a newly-diagnosed cancer rate three times higher than those who lived further away.

Breast cancer topped the list, but cancers of the prostate, pancreas, bowel, skin melanoma, lung and blood cancer were all increased. [NailaStudy.pdf](#)



Very few studies have specifically concentrated on cancer risk from cell phone towers. This lack of studies is in itself a cause for concern, especially since anecdotal evidence is plentiful.

For example, in a case known as "Towers of Doom", two cell masts were installed (in 1994) on a five story apartment building in London. Residents complained of many health problems in the following years. Seven of them were diagnosed with cancer.

The cancer rate of the top floor residents (closest to the tower) was 10 times the national average. [Further info](#).

Even the World Health Organisation has conceded that radio-frequency radiation may cause cancer. See [this report](#).

If cell towers are causing cancer, you would expect it to occur after several years of exposure, because damage from radiation exposure accumulates over time. Cancer only occurs when all body defences and repair mechanisms have been exhausted and overwhelmed.

During those years, our bodies would be stressed by that radiation every day. This affects our health in other ways, too.

Other Cell Tower Health Effects

Individuals differ in their response to electromagnetic radiation.

This website uses cookies to improve your experience. We'll assume you're ok with this, but you can opt-out if you wish. [Accept](#) [Read More](#)

For some people, short term effects from cell tower radiation exposure may include headaches, sleep disorders, poor memory, mental excitation, confusion, anxiety, depression, appetite disturbance and listlessness.

A small group of doctors from Bamberg, Germany, conducted their own [study](#) in 2005. They found increasing levels of both minor and serious health problems in patients exposed to higher radiation levels.

These health problems included tumours, diabetes, heart rhythm disturbances, inflammatory conditions, joint and limb pains, frequent infections, headaches, sleep disturbances, depression and memory problems.

Makes you wonder how much more information would be revealed by a well-designed and well-funded government study!

So don't just worry about cancer. Those doctors found that all kinds of illnesses showed a similar pattern: a higher incidence in patients with higher radiation exposure.

The American Academy of Environmental Medicine reports that studies demonstrate "significant harmful biological effects occur from non-thermal RF exposure", and these effects may include genetic damage, reproductive defects, cancer, neurological degeneration and nervous system dysfunction, immune system dysfunction, cognitive effects, protein and peptide damage, kidney damage, and developmental effects – all of which have been reported in peer-reviewed scientific literature. [Further Info](#).

Legal Cell Tower Radiation Levels



The [current legal limit](#) for cell site radiation in the US and the UK is 1000 microwatts per square centimetre.

Other countries have set limits as low as 1 microwatt per square centimetre! Switzerland, Italy, China and others manage perfectly well with a limit of 10 microwatts per square centimetre.

Why such a huge difference? It appears that some governments are more concerned about EMF safety than others.

The truth is that no one really knows what level of cell tower radiation will prove to be safe in the long term.

But isn't that a good reason to set a low limit, not a high one?

It appears that current EMF limits in the US and UK may have been influenced more by economic and political motives than by health and safety concerns.

Cell towers safe distance

It is hard to predict how much radiation you will experience in your house or workplace.

- Different cell sites emit different amounts of radiation.
- Radiation levels from a single cell site also vary, depending on usage at different times of the day.
- Radiation from a single cell tower may be different in different directions.
- Radiation is affected by the lie of the land too, and by shielding and reflections from buildings.

• And finally, the construction of your house affects its resistance to radio-frequency EMF.

This website uses cookies to improve your experience. We'll assume you're ok with this, but you can opt-out if you wish. [Accept](#) [Read More](#)

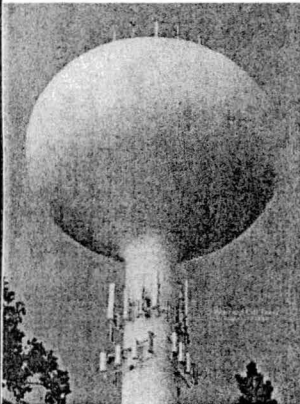
It can also happen that the cell tower you are aware of in your neighbourhood is not actually the closest cell site to your house.

Cell sites are often disguised. And many units are much smaller than the old familiar towers (though not necessarily less potent), and installed in unexpected locations.

So start off by making a careful check of your area, to find all the cell sites. Then use a map to work out the distance from each cell site to your house.

If the closest cell site is more than 400 metres away, you are probably not being harmed by it – although [high risk groups](#) and electro-sensitive people may need to be more cautious.

Cell tower – Personal Protection



If you are still concerned, try to get hold of an [RF \(radio frequency\) gauss meter](#) designed for measuring electromagnetic radiation in the cell phone [frequency](#) (microwave) range.

Another alternative is to order an [EMF survey](#) of your property. (EM Watch conducts EMF surveys in the southern half of England.)

Be aware that in every house there are rooms (and areas within rooms) where EMF radiation is higher or lower, just as some parts of your house may be brighter or darker because of window placement.

An EMF meter, or a survey will tell you which places in your home are safe, and which are not ideal for spending lots of time in.

When you next change your job or your house, find out how far away you are going to be from the nearest cell site, and let that influence your decision. Do the same when you decide where to send your child to school.

If you are still worried about cell tower radiation – here are some things you can do

- Spend less time in rooms where you can see the tower from a window. Rooms on the far side of the house from the tower will usually have lower EMF levels.
- EMFs are cumulative. You can't control the radiation coming from the cell tower, but do what you can to reduce EMF from other sources.
- Get a radio-frequency EMF meter and measure the radiation levels in different parts of your house. (Measurement with a suitable meter is the only sure way to know how much radiation you are receiving at any particular spot.)
- Consider shielding to reduce cell tower EMF – it can be shielded with special window film, metallic mesh curtaining, EMF paint, and metal foil in the roof.

EMF Shielding Video

Shielding RF Radiation with Aluminum Screening

High EMF levels are but one source of stress to the body. If your options for reducing EMF are limited, you can help your body in other ways, for example by minimizing exposure to other kinds of pollution in your air, water and food.

Good nutrition, exercise, and plenty of quality sleep will help your body repair radiation damage.

For more suggestions see our page [EMF Protection Tips](#).

In the long term, we need to find ways of providing cell phone services without exposing people to high levels of cell tower and cell phone radiation.



Many have Liked, Shared or Voted for this page. If you are one of them, thanks so much!

You may find these articles helpful:

[Power Lines and Sub-Station](#)

[EMF Protection Tips](#)

[EMF Health Effects](#)

[Cell Phones](#)

[Smart Meters](#)

[What EMF Does to You](#)

[Measure Radio-Frequency Radiation](#)

photos by: [busyPrinting](#) & [K.Wiklund](#), [Leszek.Leszczynski](#), [garryknight](#), [satguru](#), [Ron Cogswell](#)

Product Categories

- [Cell Phone Radiation Protection](#)
- [EMF Books](#)
- [Ionizing Radiation Meters](#)
- [Low Frequency EMF Meters](#)
- [Other Radiation Shielding](#)
- [Radiation Shielding Fabric](#)
- [Radiation Shielding Paint](#)
- [Radio Frequency EMF Meters](#)
- [Uncategorized](#)

This website uses cookies to improve your experience. We'll assume you're ok with this, but you can opt-out if you wish. [Accept](#) [Read More](#)

Popular Articles

- [Can Smart Meter Radiation Endanger Your Health?](#)
- [EMF Pollution](#)
- [What is EMF](#)
- [What EMF does to Your Body](#)
- [Living Close to Power Lines](#)
- [What kinds of EMF are Harmful?](#)
- [EMF Health Effects](#)
- [EMF Health Dangers - Who is at Risk?](#)
- [Six EMF Protection Tips](#)
- [Cell Tower Health Risks](#)
- [Cell Phone Radiation Health Danger](#)
- [How to Keep Safe from Cell Phone Radiation](#)
- [Is Computer Radiation Damaging Your Health?](#)
- [EMF from Cars and Bikes](#)
- [TV Radiation](#)
- [Radiation from Domestic Appliances](#)
- [Microwave Oven Radiation](#)
- [Poor House Wiring Causes Strong Magnetic Fields](#)
- [EMF Values for Sample Appliances](#)
- [EMF Survey Services](#)
- [EMF Research Quality and Quantity](#)
- [Substation Health Risks](#)

Recent EM Watch Visitors

US 266,805	EG 1,688	PT 790
CA 37,726	IL 1,660	CH 761
GB 37,274	TR 1,608	RS 753
AU 30,533	ID 1,578	HR 712
IN 23,551	NG 1,573	KE 685
PH 15,485	FR 1,402	LK 589
MY 8,293	RU 1,391	TW 587
SG 6,468	ES 1,381	FI 566
ZA 6,024	RO 1,358	IT 559
NZ 5,588	BR 1,352	GH 550
IE 3,305	GR 1,329	BE 550
AE 3,180	TH 1,134	DK 549
IL 2,390	IT 1,118	QA 542
JP 2,341	KR 1,096	VN 538
HK 2,092	SE 1,077	SI 512
DE 1,931	MX 1,073	JM 459
CN 1,890	IR 961	MM 448
SA 1,869	PL 922	NP 443
PK 1,863	BD 878	KW 440
IN 1,817	LB 832	BG 420

FLAG COUNTER

Share this page with your friends...



© 2018 EM Watch. All rights reserved. [Premium WordPress Themes.](#)

EM Watch

Electromagnetic Radiation Health and Safety

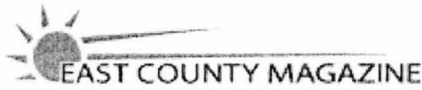
- [Home](#)
- [About](#)
- [Contact](#)
- [Privacy & Disclosures](#)
- [Sitemap](#)
-

- **EMF Risks**
 - [What is EMF](#)
 - [EMF Health Effects](#)
 - [What EMF does to Your Body](#)
 - [What kinds of EMF are Harmful?](#)
 - [Who is Most at Risk?](#)
- **EMF Protection**
 - [Six EMF Protection Tips](#)
 - [How to Keep Safe from Cell Phone Radiation](#)
- **EMF Sources**
 - [Cell Towers](#)
 - [Cell Phones](#)
 - [Computers & Networks](#)
 - [Domestic Appliances](#)
 - [House Wiring](#)
 - [Microwave Ovens](#)
 - [Power Lines](#)
 - [Smart Meters](#)
 - [Substations](#)
 - [Televisions](#)
 - [Transport – Cars and Bikes](#)
- **EMF Services**
 - [EMF Survey Services](#)
- **EMF Products**
 - [Cell Phone Radiation Protection](#)
 - [Low Frequency EMF Meters](#)
 - [Radio Frequency EMF Meters](#)
 - [EMF Books](#)
 - [Radiation Shielding Fabric](#)
 - [Radiation Shielding Paint](#)
 - [Other Radiation Shielding](#)
 - [Ionizing Radiation Meters](#)
- **EMF Research**
 - [EMF Research Quality and Quantity](#)
 - [EMF Values for Sample Appliances](#)


Cell Tower Health Risks

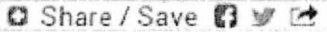
This website uses cookies to improve your experience. We'll assume you're ok with this, but you can opt-out if you wish. [Accept](#) [Read More](#)

- Home
- About/Contact
- Subscribe
- News Center
- Best of East County
- Bookshelf
- News issues
- Citizens Action
- Communities
- Coupons
- Events/Arts
- View our calendar
- Food & Wine
- Green Scene
- Health/Fitness
- Homes & Gardens
- People/Views
- Politics
- Radio
- Wildfires & Emergencies



DANGERS OF LIVING NEAR CELL PHONE TOWERS RAISED

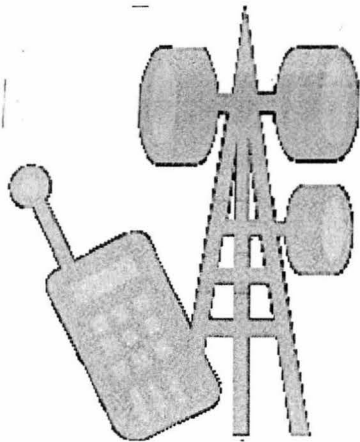
 Printer-friendly version

 Share / Save

November 2008 Articles

La Mesa Council holds hearing Nov. 5 on proposal to erect cell phone tower in Lake Murray area

By Miriam Raftery



When Mom asked me to look into possible health hazards posed by cell phone panel antennas that a church in her neighborhood wants to put up, I expected to find reassuring facts to allay Mom’s concerns. Instead, I found deeply disturbing data that makes me wonder why the public is not being informed about health risks—and why our government seems intent on covering up troubling truths.

Cell phone companies and the U.S. Food and Drug Administration assert that cell phone towers don’t pose health risks to the public. Some studies support this assertion, but other studies suggest just the opposite.

Harvard-trained Dr. Andrew Weil at the University of Arizona’s medical center recently observed, “In January 2008, the National Research Council (NRC), an arm of the National Academy of Sciences and the National Academy of Engineering, issued a report saying that we simply don’t know enough about the potential health risks of long-term exposure to RF energy from cell phones themselves, cell towers, television towers, and other components of our communications system. The scientists who prepared the report emphasized, in particular, the unknown risks to the health of children, pregnant women, and fetuses as well as of workers whose jobs entail high exposure to RF (radiofrequency) energy....Because so much of cell phone technology is new and evolving, we don’t have data on the consequences of 10, 20 or 30 years worth of exposure to the RF energy they emit,” Weil concluded. The report called for long-term safety studies on all wireless devices including cell phones, computers, and cell phone towers.

A 2006 report issued by the World Health Organization (WHO) offered some reassurance and found no scientific evidence that radiofrequency signals from cell towers cause adverse health effects. The report noted that up to five times more of the RF signals from FM radio and television (than from cell towers) are absorbed by the body with no known adverse effects on health in the more than 50 years that radio and TV broadcast stations have been operating.

But an Australian study found that children living near TV and FM broadcast towers, which emit similar radiation to cell towers, developed leukemia at three times the rate of children living over seven miles away.

If you live within a quarter mile of a cell phone antenna or tower, you may be at risk of serious harm to your health, according to a German study cited at www.EMF-Health.com, a site devoted to exposing hazards associated with electromagnetic frequencies from cell phone towers and other sources.

Cancer rates more than tripled among people living within 400 meters of cell phone towers or antennas, a German study found. Those within 100 meters were exposed to radiation at 100 times normal levels. An Israeli study found risk of cancer quadrupled among people living within 350 meters (1,148 feet) of a cell phone transmitter—and seven out of eight cancer victims were women. Both studies focused only on people who had lived at the same address for many years.

Other studies have found that levels of radiation emitted from cell phone towers can damage cell tissues and DNA, causing miscarriage, suppressing immune function, and causing other health problems.

Astoundingly, the federal government does not allow rejection of a cell phone tower based on health risks, according to a 2005 article. A Google search found no evidence that this situation has changed.

Yet over 1.9 million cell phone towers and antennae have been approved nationwide without federal studies to assure safety of those living nearby.

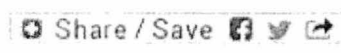
How many cell phone towers and antennas are in your neighborhood? Find out at www.antennasearch.com. I plugged in my address on Mt. Helix, hardly an urban stronghold, and was astounded to discover that there are 96 cell phone towers, 286 antennas and 2 proposals for new towers within four miles of my home!

So how about Mom’s neighborhood, where an Evangelical church insists a new tower is needed? Mom gets perfectly fine cell phone reception, and so do the neighbors she’s spoken with—not surprising since there are already 113 towers and 335 antennas within a four-mile radius.

Churches, schools, fire stations, and other buildings are increasingly erecting cell phone towers or antennas because cell phone companies are willing to pay rental fees of hundreds or even thousands of dollars a month—welcome infusions for cash-strapped budgets. But at what cost to the public’s health? There are young children in Mom’s neighborhood, less than one block from the proposed cell phone antenna site.

In Sweden, the government requires interventions to protect the public from electromagnetic frequencies. Why isn’t the U.S. government paying attention to this potential risk to public safety?

If you wish to share your views on the T-Mobile proposed cell phone tower at 5777 Lake Murray Blvd. (near Marengo Avenue), the La Mesa City Council will hold a public meeting on Wednesday, November 5th at 7 p.m. in Council Chambers at the La Mesa City Hall, 8130 Allison Ave., La Mesa.



Search

DONATE NOW
SUPPORT
INDEPENDENT MEDIA



Recent comments

- Important meeting 1 sec ago
- Some examples of media "collusion" 2 hours 26 min ago
- BLINDED BY PROPAGANDA 2 hours 31 min ago
- Great Tip! We have seen them 4 hours 26 min ago
- Horse Scare & (Pellet Gun Tip) On Property 4 hours 31 min ago
- Fake headline and lies 5 hours 8 min ago
- THE SOUND OF SILENCE 5 hours 43 min ago
- ABOUT TIME 5 hours 47 min ago
- POTUS & SINCLAIR 5 hours 59 min ago
- NICE ARTICLE 6 hours 10 min ago

User login

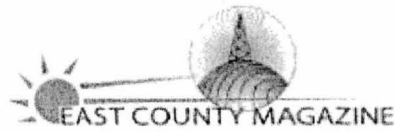
Username or e-mail *

Password *

Create new account
Request new password



Weddings in East County
Tips, articles, & resources
For your special day
Click for details!



Community Links

- » Business Associations
- » Community Organizations
- » County and City Governments
- » East County Sports
- » Immigration and Citizenship
- » Media Resources
- » Neighborhoods
- » Parks and Environmental Resources
- » Police and Sheriff Contacts
- » Senior Services
- » Traffic Links
- » Utilities
- » Veterans & Military
- » Visitors & Tourism
- » Webcams in East County & San Diego's Eastern Region
- » Wildfire Information
- » Youth Resources



East County Magazine

[View our calendar](#)

[Sign up for free newsletter](#)

[Sign up for wildfire alerts](#)

[Listen to our radio show](#)

[Subscribe to our RSS feed](#)

Support East County Magazine - Heartland Coalition (La Mesa - CA) when you search the Web or shop online



with GoodSearch.

Powered by Drupal