

Rubin & Hays

ATTORNEYS AT LAW

Kentucky Home Trust Building, 450 South Third Street, Louisville, Kentucky 40202-1410
Telephone (502) 569-7525 Telefax (502) 569-7555 www.rubinhays.com

CHARLES S. MUSSON
W. RANDALL JONES
CHRISTIAN L. JUCKETT

April 19, 2017

RECEIVED

APR 21 2017

Public Service
Commission

Dr. Talina Mathews
Executive Director
Public Service Commission
P.O. Box 615
Frankfort, Kentucky 40602

Re: Mountain Water District - PSC Case No. 2017-00150

Dear Dr. Mathews:

Enclosed please find the original and ten (10) copies of a supplemental record filing of the Mountain Water District in connection with the above referenced Case. Such filing identifies the make and model of the grinder pumps being purchased by the District with the proceeds of the KIA loan.

If you need any additional information or documentation, please let us know.

Sincerely,

Rubin & Hays

By



W. Randall Jones

WRJ:jl
Enclosures
cc: Distribution List

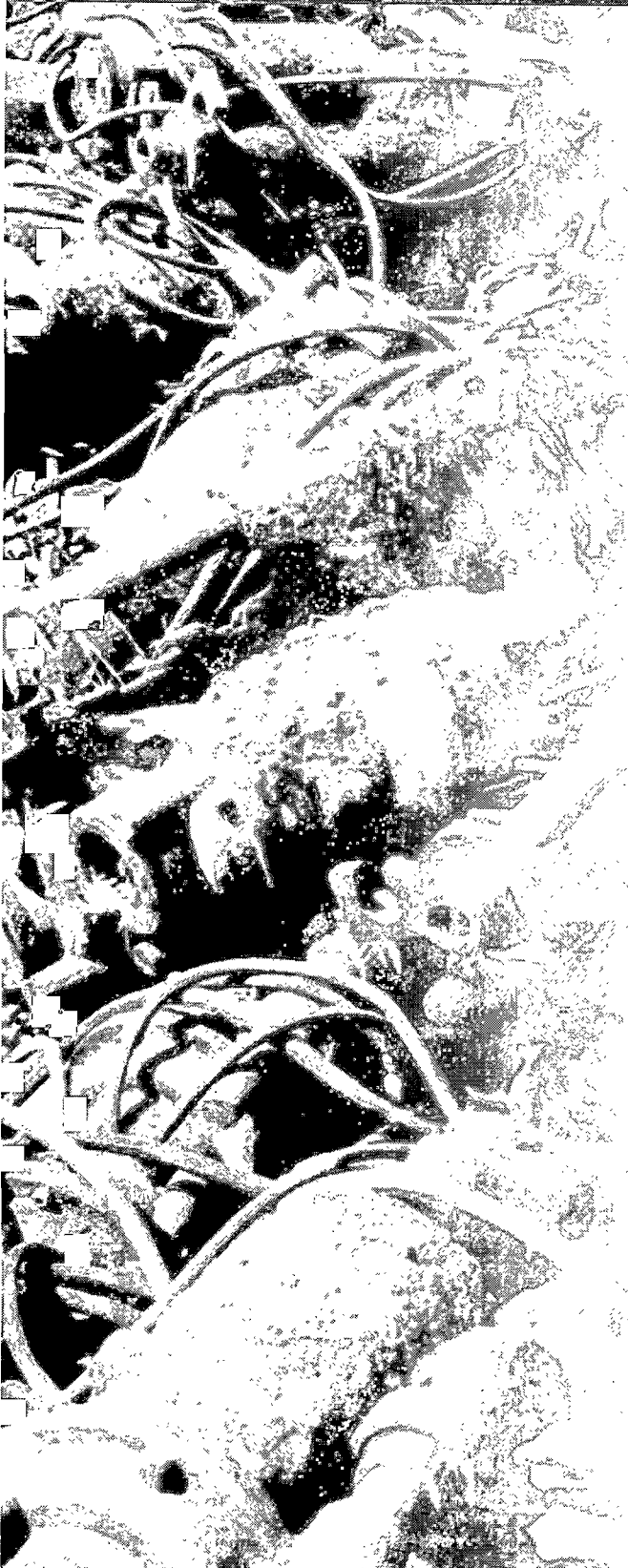
AFTER MARKET GRINDER PUMP

E/One Upgrade

RECEIVED

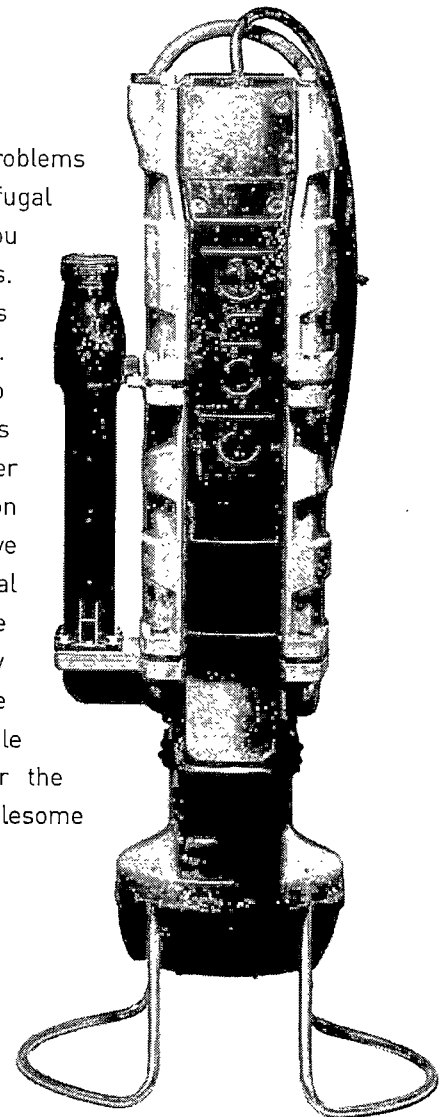
APR 21 2017

Public Service
Commission

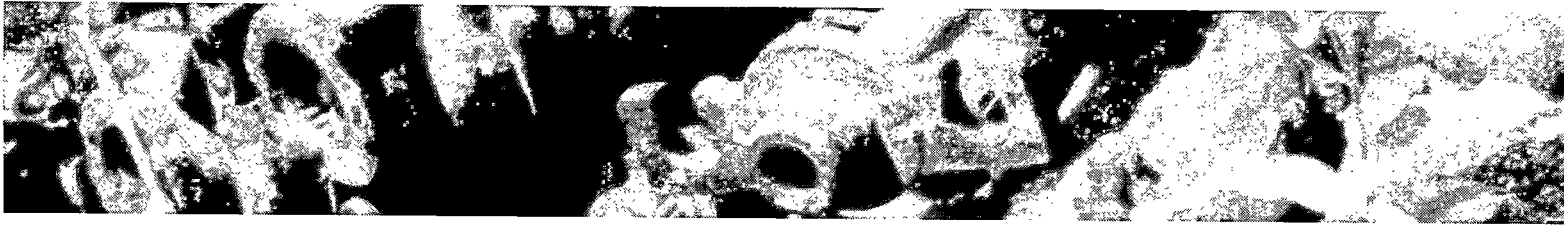


If you're tired of constant service calls resulting from grease-fouled floats, jammed grinders, burned-out motors, and other grinder pump problems, it's time to call E/One.

When you're having too many problems with your system's centrifugal grinder pumps, it can wear you down. And wear out your budgets. Those inferior grinder pumps aren't worth fixing. And fixing. And fixing. The solution is to upgrade. To Environment One's Upgrade, the aftermarket grinder pump that works and goes on working without any preventive maintenance. It's the original grinder pump design, the one others have tried to copy but they just haven't gotten it right. We have it down to a science. A simple science – design a pump for the application. So replace that troublesome pump. **With E/One's Upgrade.**



e one
SYSTEM UPGRADE



Why is the E/One Upgrade Better?

10 REASONS TO SWITCH TO THE E/ONE UPGRADE

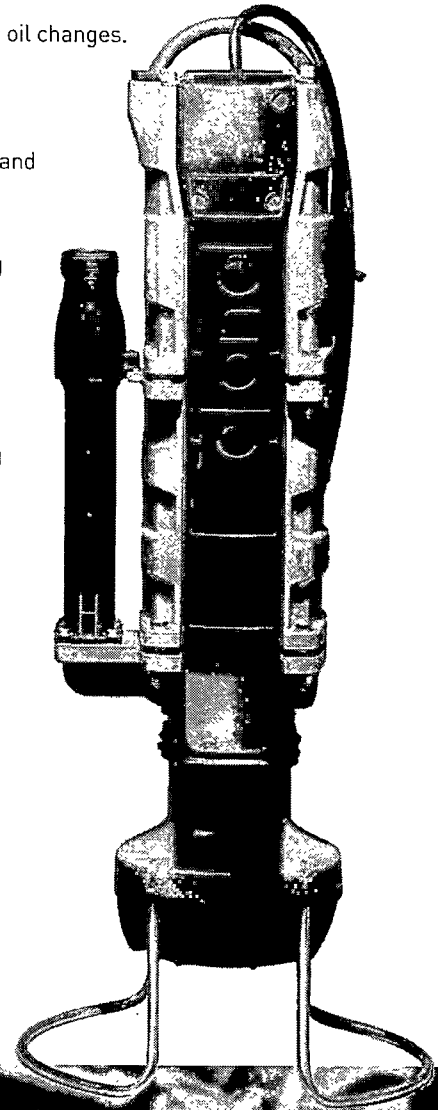
Our Upgrade



Their Grinder Pumps

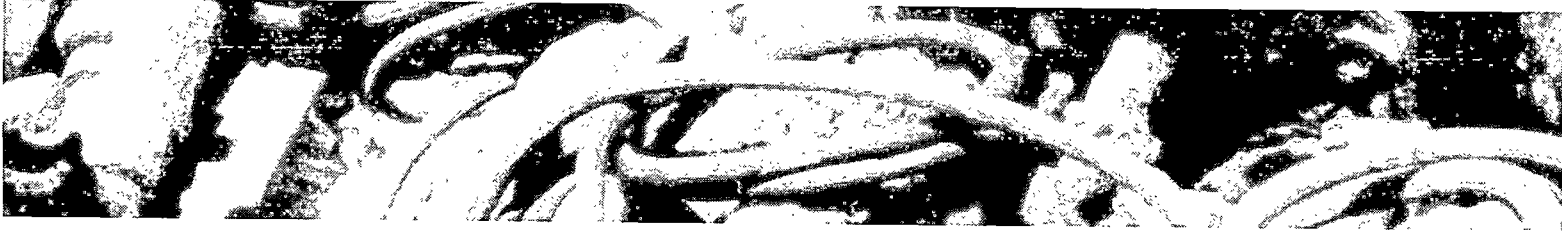
1. Semi-positive displacement pump – provides virtually the same flow regardless of pressure. Scouring velocities are maintained without stressing the pump.
2. Non-jamming grinder – low-speed, high-torque, with large-diameter inlet.
3. Non-contact, non-fouling pressure switch level controls. Proven reliable and maintenance-free.
4. Air-filled motor requires zero preventive maintenance.
5. Built-in check valve and anti-siphon valve.
6. Longest mean time between service calls – 10 years.
7. Lowest operation and maintenance costs.
8. All pump, level and motor controls in one compact assembly, making service simple and convenient.
9. Near-constant flow regardless of pressure – prevents build-up of solids in piping.
10. Zero preventive maintenance.

1. Centrifugal pumps – flows vary dramatically, causing high flows and dangerously short run times to no flow and continuous operation. The result: burned-out motors.
2. Jamming common – high-speed, low-torque, with small-diameter inlet.
3. Float switches – require preventive maintenance to remove grease and oil. Constant source of problems. Mercury float switches difficult to dispose of are an environmental issue.
4. Oil-filled motor requires periodic oil changes.
5. No anti-siphon valve.
6. Constant service calls.
7. Routine preventive maintenance and service calls.
8. Separate pump, level and motor controls, making troubleshooting and repairs more difficult and time consuming.
9. Widely varying flow, reduced as pressure increases, allowing build-up of solids in pipe. Solids build-up causes increased pressure and reduced flow, compounding the problem.
10. Jammed grinders, grease-fouled floats require periodic maintenance.



The E/One Upgrade is the reliable, cost-efficient solution to your grinder pump problems.



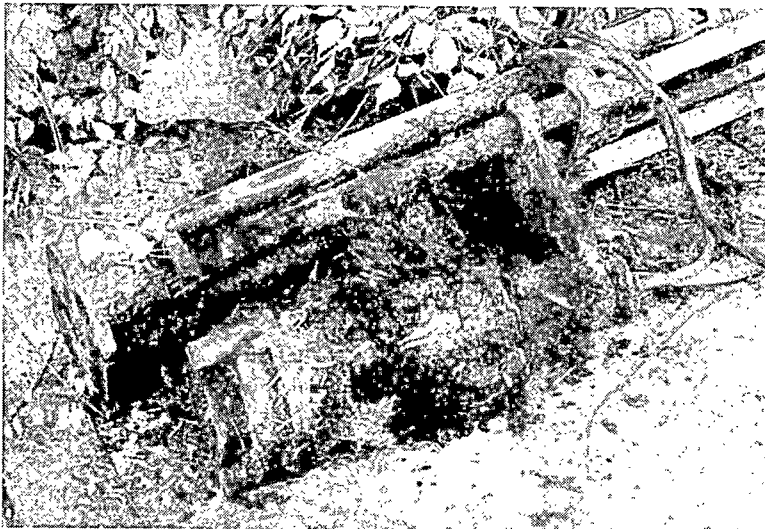


Have you taken control of the maintenance problems with your centrifugal grinder pumps? But at what cost?

MAINTAINING A WASTEWATER COLLECTION SYSTEM IS BUSY ENOUGH when the equipment is working properly. Additional stress and strain on resources from unreliable centrifugal

design doesn't work. They create an ever-changing system curve. They use a small grinder. They use high-speed, low-torque motors. They use floats. And when the design doesn't work,

So if you're dealing with nuisance pumps that are maintenance-intensive and costly to fix, replace them with the Upgrade, the pump with the lowest operation and maintenance costs and



Too many centrifugal pumps end up in the graveyard. E/One pumps keep working reliably year after year with the lowest operation and maintenance costs in the industry.



Top view showing Upgrade retrofit.

pumps is unacceptable. Rinsing down floats, unjamming cutter wheels and replacing pumps regularly in problem locations? All of that preventive maintenance is unnecessary with the Upgrade from Environment One.

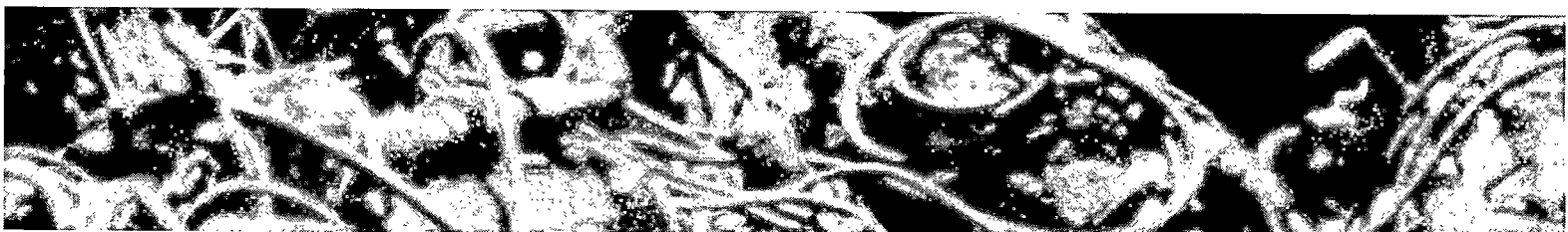
Centrifugal pumps were never intended to be connected parallel in large numbers. The problem with centrifugal grinder pump systems is that the

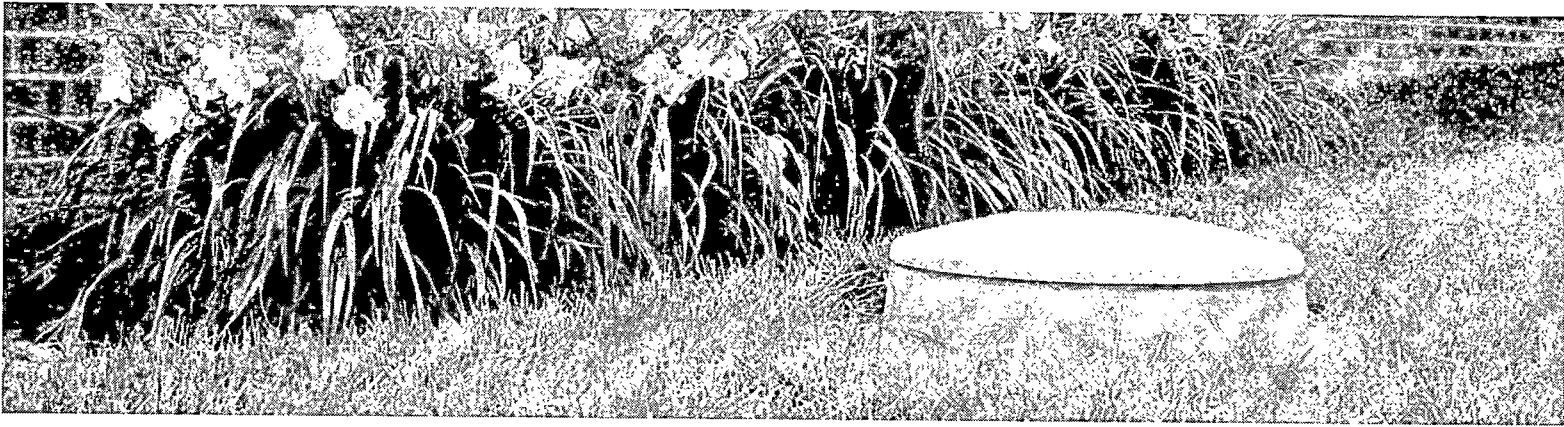
the system doesn't work. The result? Ongoing maintenance headaches and high costs. And unreliable performance.

Fortunately, there is a simple solution. A reliable solution. From Environment One, the company that's been making the industry's most reliable pump for more than 40 years. With more than one million end users daily, E/One is the leader in grinder pump technology.

the longest mean time between service calls – 10 years.

The Upgrade is engineered to fit virtually any other grinder pump well. Its universal design allows ready to connect, easy drop-in changeover. So don't put up with one more maintenance disaster from your centrifugal pump. Call E/One today and start making your life easier and your system costs lower.





SPECIFICATIONS

Installation

The Upgrade is engineered to fit into virtually any other grinder pump wet well. Universal design allows easy drop-in changeover.

Features and Benefits

- The 1 ¼-inch slide face discharge connection can be adapted to any existing discharge piping without changing piping on the outside of the basin.
- Grinder is designed to eliminate jamming and for minimum wear to grinder mechanism.
- The Upgrade's self-contained level control system eliminates troublesome float switches. E/One's pressure switch level control system is the most effective in the industry.
- The internal check valve assembly is designed for non-clog, trouble-free operation.

Operational Information

MOTOR

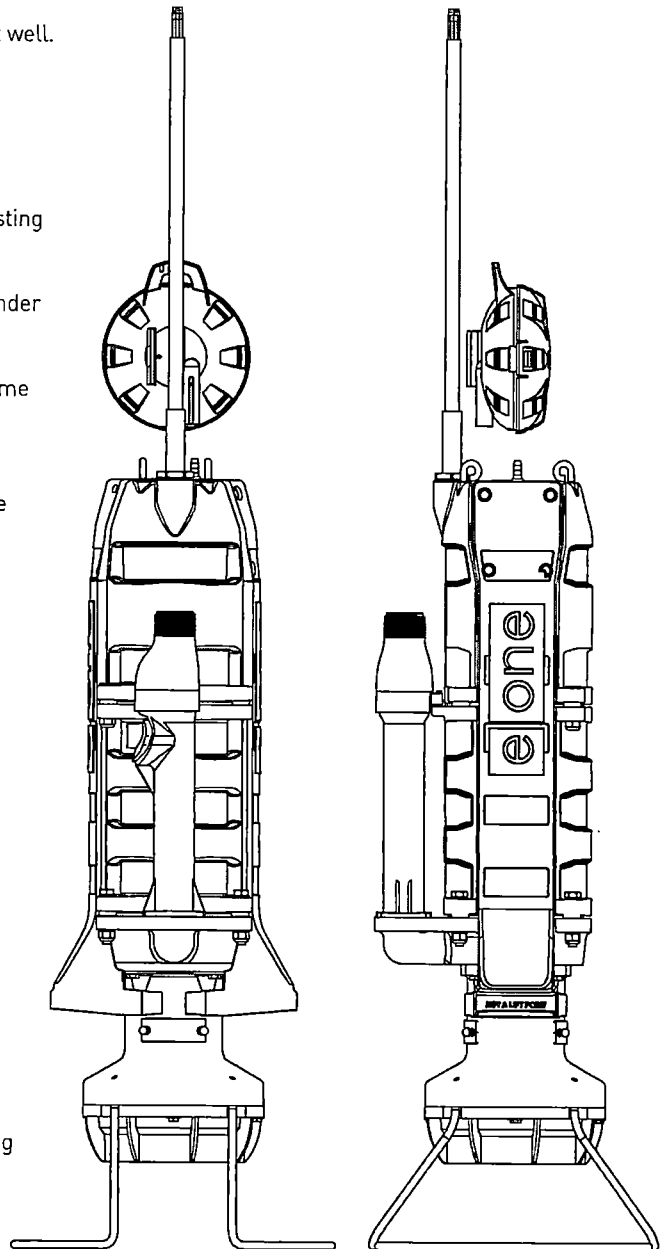
1 hp, 1,725 rpm, high torque, capacitor start, thermally protected 240 volt, 60 Hz, 1 phase; 120 volt motors are also available

ALARM PANEL

For new installations, a NEMA 4X, UL-listed or CSA-approved alarm panel includes power and signal circuit breakers, audible and visual alarms, push-to-silence button, push-to-run button, and terminal strips. For centrifugal replacements, an Upgrade power board is available that consists of DIN RAIL mountable components designed to be installed inside the existing panel.

DISCHARGE

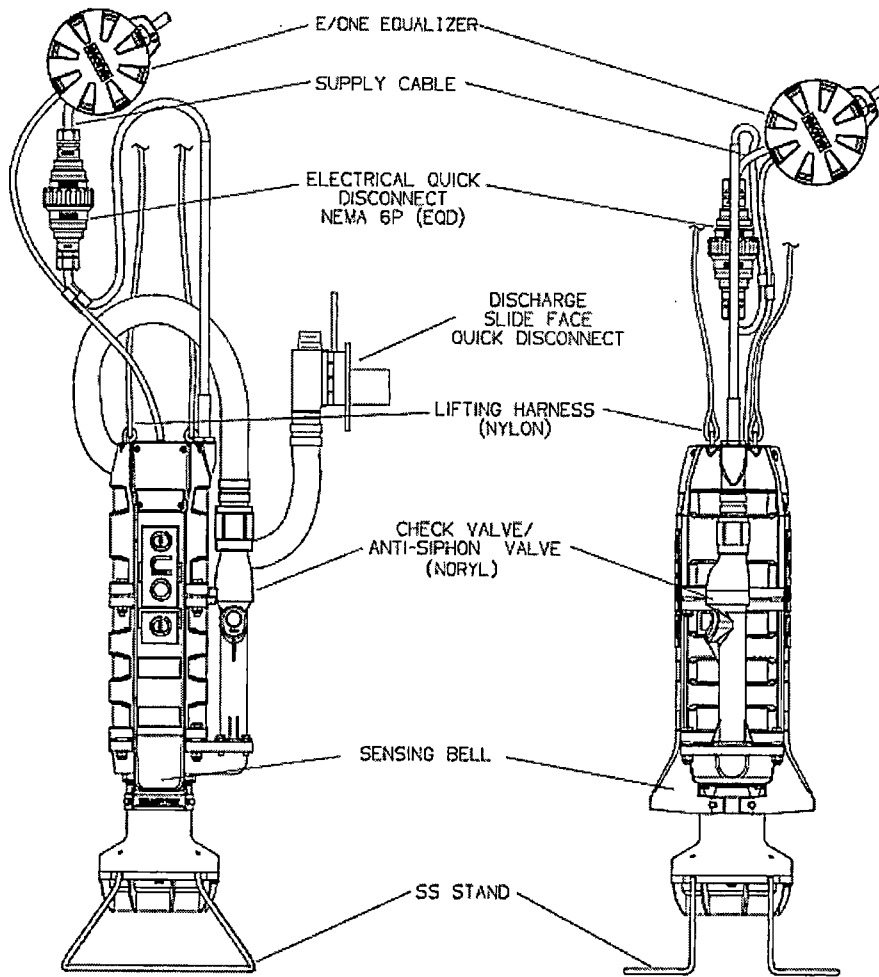
15 gpm at 0 psig / 11 gpm at 40 psig / 9 gpm at 60 psig / 8 gpm at 80 psig



Environment One Corporation
 A Precision Castparts Company
 2773 Balltown Road, Niskayuna, NY USA 12309-1090
 Voice (01) 518.346.6161 Fax 518.346.6188 www.eone.com



LM000366 Rev A



UPGRADE GRINDER PUMP



LNT	GAE	04/24/07	-	
DR BY	CHK'D	DATE	ISSUE	SCALE



UPGRADE FEATURES

NA0055P01

Randy Jones

From: Roy Sawyers <rsawyers@mtwater.org>
Sent: Tuesday, April 04, 2017 12:45 PM
To: Randy Jones
Subject: Fwd: Grinder Pump Stations
Attachments: MW GRINDER PUMP SPECIFICATIONS.DOCX; W-Series Pump.pdf

Sent from my Samsung device

----- Original message -----

From: Jonathan WASCON <jonathanc@wasconinc.com>
Date: 04/03/2017 5:54 PM (GMT-05:00)
To: Roy Sawyers <rsawyers@mtwater.org>, "Springer, Marvin" <mspringer@eone.com>
Subject: RE: Grinder Pump Stations

Roy,

Attached is what I believe they are wanting. The specs is what I think Marvin sent over a couple months ago. Also attached is the drawing of the pump only.

Model Number of Pump – U-Series Extreme Pump Only

Supply Cable EQD Hood – Part#1224

Jonathan Cummings
WASCON, Incorporated
910 East Main Street
Livingston, TN 38570
Office: (931) 823-1388
Mobile: (931) 349-0441
jonathanc@wasconinc.com
www.wasconinc.com

WASCON
SALES and SERVICE