

December 30, 2016

RECEIVED

JAN 3 2017

PUBLIC SERVICE
COMMISSION

Talina Mathews
Executive Director
Public Service Commission
211 Sower Blvd.
Frankfort, KY 40601

Re: Sentra Corporation

Case No. 2017-00028

Dear Ms. Mathews:

Sentra Corporation is submitting a filing for rates to be effective February 1, 2017. If you have any questions please contact Jerrica Whitaker at 859-263-3948 or by email at jwhitaker@mhp.energy.

Respectfully,



D. Michael Wallen
Senior Vice President of Operations

RECEIVED

JAN 03 2017

PUBLIC SERVICE
COMMISSION
Page 1

Sentra Corporation

QUARTERLY REPORT OF GAS COST
RECOVERY RATE CALCULATION

Date Filed: 30-Dec-17

Date Rates to be Effective: February 1, 2017

Reporting Period is Calendar Quarter Ended: October 31, 2016

SCHEDULE I
GAS COST RECOVERY RATE SUMMARY

<u>Component</u>	<u>Unit</u>	<u>Amount</u>
Expected Gas Cost (EGC)	\$/Mcf	4.2355
+ Refund Adjustment (RA)	\$/Mcf	-
+ Actual Adjustment (AA)	\$/Mcf	#DIV/0!
+ Balance Adjustment (BA)	\$/Mcf	-
<u>= Gas Cost Recovery Rate (GCR)</u>	\$/Mcf	<u>#DIV/0!</u>

GCR to be effective for service rendered from: **** 2017

<u>A. EXPECTED GAS COST CALCULATION</u>	<u>Unit</u>	<u>Amount</u>
Total Expected Gas Cost (Schedule II)	\$	122,867.87
+ Sales for the 12 months ended 10/31/2016	Mcf	<u>29,008.90</u>
<u>- Expected Gas Cost (EGC)</u>	\$/Mcf	4.2355
<u>B. REFUND ADJUSTMENT CALCULATION</u>	<u>Unit</u>	<u>Amount</u>
Supplier Refund Adjustment for Reporting Period (Sch. III)	\$/Mcf	\$ -
+ Previous Quarter Supplier Refund Adjustment	\$/Mcf	\$ -
+ Second Previous Quarter Supplier Refund Adjustment	\$/Mcf	\$ -
+ Third Previous Quarter Supplier Refund Adjustment	\$/Mcf	\$ -
<u>= Refund Adjustment (RA)</u>	\$/Mcf	\$ -
<u>C. ACTUAL ADJUSTMENT CALCULATION</u>	<u>Unit</u>	<u>Amount</u>
Actual Adjustment for the Reporting Period (Schedule IV)	\$/Mcf	#DIV/0!
+ Previous Quarter Reported Actual Adjustment	\$/Mcf	
+ Second Previous Quarter Reported Actual Adjustment	\$/Mcf	
+ Third Previous Quarter Reported Actual Adjustment	\$/Mcf	
<u>=Actual Adjustment (AA)</u>	\$/Mcf	<u>#DIV/0!</u>
<u>D. BALANCE ADJUSTMENT CALCULATION</u>	<u>Unit</u>	<u>Amount</u>
Balance Adjustment for the Reporting Period (Schedule V)	\$/Mcf	\$ -
+ Previous Quarter Reported Balance Adjustment	\$/Mcf	
+ Second Previous Quarter Reported Balance Adjustment	\$/Mcf	
+ Third Previous Quarter Reported Balance Adjustment	\$/Mcf	
<u>=Balance Adjustment (BA)</u>	\$/Mcf	<u>\$ -</u>

SCHEDULE II
EXPECTED GAS COST

Actual* Mcf Purchase for 12 months ended

10/31/16

(1) <u>Supplier</u>	(2) NYMEX <u>Dth</u>	(3) Heat <u>Rate</u>	(4) <u>Mcf</u>	(5) ** <u>Rate</u>	<u>Greystone</u>	(6) (2) x (5)+(6) <u>Cost</u>
					<u>Adder</u>	
Greystone, LLC	3.7940	1.0660	1,400.70	4.0444	0.3700	6,183.26
Greystone, LLC	3.7940	1.0660	284.30	4.0444	0.3700	1,255.02
Greystone, LLC	3.7940	1.0660	344.60	4.0444	0.3700	1,521.20
Greystone, LLC	3.7940	1.0660	118.10	4.0444	0.3700	521.34
Greystone, LLC	3.7940	1.0660	543.60	4.0444	0.3700	2,399.67
Greystone, LLC	3.7940	1.0660	729.70	4.0444	0.3700	3,221.19
Greystone, LLC	3.7940	1.0660	1,992.90	4.0444	0.3700	8,797.47
Greystone, LLC	3.7940	1.0660	3,204.80	4.0444	0.3700	14,147.28
Greystone, LLC	3.7940	1.0660	5,943.70	4.0444	0.3700	26,237.89
Greystone, LLC	3.7940	1.0660	7,136.30	4.0444	0.3700	31,502.51
Greystone, LLC	3.7940	1.0660	1,782.00	4.0444	0.3700	7,866.47
Greystone, LLC	3.7940	1.0660	4,352.70	4.0444	0.3700	19,214.58
Totals	45.5280		27,833.40			122,867.87

Line losses are 27,833.40 Mcf and sales of 29,008.90 Mcf. -4.22% for 12 months ended 10/31/2016 based on purchases of Mcf.

	<u>Unit</u>	<u>Amount</u>
Total Expected Cost of Purchases (6) (to Schedule IA.)	\$	\$ 122,867.87
/ Mcf Purchases (4)	Mcf	<u>27,833.40</u>
= Average Expected Cost Per Mcf Purchased	\$/Mcf	\$ 4.4144
x Allowable Mcf Purchases (not to exceed 5%)	Mcf	<u>27,833.40</u>
= Total Expected Gas Cost	\$	\$ 122,867.87

*Or adjusted pursuant to Gas Cost Adjustment Clause and explained herein.

**Supplier's tariff sheets or notices are attached.

SCHEDULE III
SUPPLIER REFUND ADJUSTMENT

Details for the 3 months ended

10/31/2016

<u>Particulars</u>	<u>Unit</u>	<u>Amount</u>
Total supplier refunds received	\$	\$ -
+ Interest	\$	\$ -
<hr/>		
= Refund Adjustment including interest	\$	\$ -
+ Sales for 12 months ended __ 10/31/2016	Mcf	29,009
<hr/>		
=Supplier Refund Adjustment for the Reporting Period (to Schedule IB.)	\$/Mcf	\$ -

SCHEDULE IV
ACTUAL ADJUSTMENT

For the 3 month period ended 10/31/2016

This schedule will not be used until new PGA has been used 6 months

<u>Particulars</u>	<u>Unit</u>	Month 1	Month 2	Month 3
Total Supply Volumes Purchased	Mcf	-	-	-
Total Cost of Volumes Purchased	\$			
/ Total Sales	Mcf	-	-	-
<hr/>				
(may not be less than 95% of supply volumes) (G8*0.95)				
= Unit Cost of Gas	\$/Mcf	#DIV/0!	#DIV/0!	#DIV/0!
- EGC in effect for month	\$/Mcf	\$ -	\$ -	\$ -
= Difference	\$/Mcf	#DIV/0!	#DIV/0!	#DIV/0!
[(Over-)/Under-Recovery]				
x Actual sales during month	Mcf	-	-	-
= Monthly cost difference	\$	#DIV/0!	#DIV/0!	#DIV/0!

	<u>Unit</u>	<u>Amount</u>
Total cost difference (Month 1 + Month 2 + Month 3)	\$	#DIV/0!
+ Sales for 12 months ended <u>10/31/2016</u>	Mcf	<u>29,009</u>
= Actual Adjustment for the Reporting Period (to Schedule IC.)	\$/Mcf	#DIV/0!

*Enter monthly Mcf purchases first
Enter monthly \$ purchases second*

Enter EGC that the Commission approved for months 1, 2, and 3

Enter monthly Mcf sales third

SCHEDULE V
BALANCE ADJUSTMENT

Appendix B
Page 6

For the 3 month period ended 10/31/2016

Line	Particulars	Unit	Amount
	Utility Gas Management		
(1)	Total cost difference from actual adjustment used to compute AA of the GCR effective four quarters prior to the effective date of the currently effective GCR.	\$	-
1			
2 Less:	Dollars amount resulting from the AA of _____ - \$/MCF as used to compute the GCR in effect four quarters prior to the effective date of the currently effective GCR times the sales of 29,009 MCF during the 12 month period the AA was in effect.	\$	0.00
3			
4 Equals:	Balance Adjustment for the AA.	\$	-
(3)	Total Supplier Refund Adjustment including interest used to compute RA of the GCR effective four quarters prior to the effective date of the currently effective GCR.	\$	-
5			
6 Less:	Dollar amount resulting from the RA of _____ - \$/MCF as used to compute the OCR in effect four quarters prior to the effective GCR times the sales of 29,009 MCF during the 12 month period the RA was in effect.	\$	-
7			
8 Equals:	Balance Adjustment for the RA.	\$	-
(3)	Total Balance Adjustment used to compute RA of the GCR effective four quarters prior to the effective date of the currently effective GCR.	\$	-
9			
10 Less:	Dollar amount resulting from the BA of _____ - \$/MCF four quarters prior to the effective date of the currently effective GCR times the sales of 29,009 MCF during the 12 month period the BA was in effect.	\$	-
11			
12 Equals:	Balance Adjustment for the BA.	\$	-
13	Total Balance Adjustment Amount (1) + (2) + (3)	\$	0.00
14 Divided By:	Sales for 12 months ended 10/31/2016	\$	29,009
15 Equals:	Balance Adjustment for the Reporting Period (to Schedule ID).	\$/MCF	0.000000

FUTURES

TradingCharts.com

Free Quotes & Charts for Commodities / Futures

Login:
Premium Subscriber
or Classic Members

HOME | COMMODITY CHARTS | COMMODITY QUOTES | MY MENU | FUTURES NEWS | PREMIUM FEATURES || FOREX CHARTS | FOREX QUOTES || STOCKS

Search

Oil Futures Prices

View By: Sector
 Exchange

- CATTLE / HOGS
- CURRENCY
- FOOD / FIBER
- GRAIN / OILSEED
- INDEX
- INTEREST
- METAL
- OIL / ENERGY
- Popular Markets**
- Crude Oil (e) NYMEX
- Heating Oil (e) NYMEX
- Natural Gas (e) NYMEX
- NYH RBOB Gas(e) NYMEX
- Less Popular**
- Brent Crude Oil (p) NYMEX
- Coal (p) NYMEX
- Crude Oil (p) NYMEX
- Crude Oil Fin (e) NYMEX
- Crude Oil miNY (e) NYMEX
- Ethanol (e) CBOT
- Heating Oil (p) NYMEX
- Heating Oil Fin (e) NYMEX
- Heating Oil miNY (e) NYMEX
- Natural Gas (p) NYMEX
- Natural Gas Fin (e) NYMEX
- Natural Gas miNY (e) NYMEX
- NYH RBOB Gas(p) NYMEX
- NYH RBOB GasFin (e) NYMEX
- NYH RBOB GasmiNY (e) NYMEX
- PJM Electricity (p) NYMEX
- Uranium (e) NYMEX

Quick Links

- Chart/Quote Menu
- My Chart/Quote Menu
- Premium Features:**
- Markets at a Glance
- Advanced Analytical Charts
- Dynamic Intraday Charts
- Spread Charts
- Download EOD Data
- Email Price Alerts

Commodity Futures Price Quotes For Natural Gas (NYMEX)

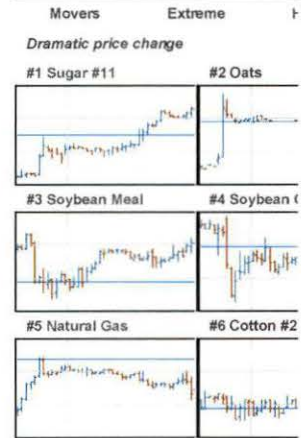
(Price quotes for NYMEX Natural Gas delayed at least 10 minutes as per exchange requirements)
Also available: [electronic Session Quotes](#)

Trade Natural Gas now with:

Click for Chart	Open	High	Low	Last	Time	Set	Chg	Vol	Prior Day Set	Op Int	Opt's
Jan'17	-	3.994	3.664	3.930	18:01 Dec 28	3.930	0.169	15151	3.761	8170	Call Put
Feb'17	-	3.902	3.670	3.898	18:01 Dec 28	3.898	0.132	145053	3.766	175480	Call Put
Mar'17	-	3.828	3.615	3.825	18:01 Dec 28	3.825	0.117	58364	3.708	261988	Call Put
Apr'17	-	3.652	3.495	3.648	18:01 Dec 28	3.648	0.087	44514	3.561	122648	Call Put
May'17	-	3.601	3.478	3.598	18:01 Dec 28	3.598	0.078	25588	3.520	101829	Call Put
Jun'17	-	3.616	3.498	3.610	18:01 Dec 28	3.610	0.073	9731	3.537	41805	Call Put
Jul'17	-	3.633	3.518	3.632	18:01 Dec 28	3.632	0.071	6968	3.561	55345	Call Put
Aug'17	-	3.619	3.510	3.619	18:01 Dec 28	3.619	0.070	4500	3.549	34157	Call Put
Sep'17	-	3.597	3.488	3.595	18:01 Dec 28	3.595	0.070	6629	3.525	34035	Call Put
Oct'17	-	3.618	3.502	3.614	18:01 Dec 28	3.614	0.073	21192	3.541	88297	Call Put
Nov'17	-	3.654	3.557	3.648	18:01 Dec 28	3.648	0.073	9569	3.575	34486	Call Put
Dec'17	-	3.747	3.643	3.742	18:01 Dec 28	3.742	0.067	5690	3.675	36322	Call Put
Jan'18	-	3.822	3.735	3.819	18:01 Dec 28	3.819	0.066	8957	3.753	40365	Call Put
Feb'18	-	3.772	3.682	3.770	18:01 Dec 28	3.770	0.073	6189	3.697	13471	Call Put
Mar'18	-	3.651	3.580	3.648	18:01 Dec 28	3.648	0.056	4481	3.592	34229	Call Put
Apr'18	-	2.977	2.950	2.971	18:01 Dec 28	2.971	0.008	5351	2.963	40465	Call Put
May'18	-	2.899	2.883	2.892	18:01 Dec 28	2.892	-0.003	2530	2.895	11067	Call Put
Jun'18	-	2.916	2.896	2.907	18:01 Dec 28	2.907	-	2206	2.907	8559	Call Put
Jul'18	-	2.933	2.912	2.924	18:01 Dec 28	2.924	-0.001	1165	2.925	13014	Call Put
Aug'18	-	2.925	2.908	2.916	18:01 Dec 28	2.916	-0.004	527	2.920	6377	Call Put
Sep'18	-	2.894	2.888	2.894	18:01 Dec 28	2.894	-0.004	193	2.898	9546	Call Put
Oct'18	-	2.918	2.902	2.910	18:01 Dec 28	2.910	-0.005	2012	2.915	17976	Call Put
Nov'18	-	-	-	2.960	18:01 Dec 28	2.954	-0.006	220	2.960	8406	Call Put
Dec'18	-	3.085	3.079	3.079	18:01 Dec 28	3.079	-0.008	360	3.087	8628	Call Put
Jan'19	-	-	-	3.179	18:01 Dec 28	3.179	-0.009	209	3.188	2795	Call Put
Feb'19	-	-	-	3.148	18:01 Dec 28	3.143	-0.005	1	3.148	912	Call Put
Mar'19	-	-	-	3.073	18:01 Dec 28	3.088	0.006	144	3.082	1387	Call Put
Apr'19	-	-	-	2.683	18:01 Dec 28	2.719	0.022	144	2.697	1831	Call Put
May'19	2.660	2.660	2.660	2.691	18:01 Dec 28	2.691	0.025	1	2.666	578	Call Put
Jun'19	-	-	-	2.717	18:01 Dec 28	2.719	0.025	30	2.694	479	Call Put
Jul'19	-	-	-	2.751	18:01 Dec 28	2.750	0.025	28	2.725	520	Call Put
Aug'19	-	-	-	2.765	18:01 Dec 28	2.762	0.025	-	2.737	498	Call Put
Sep'19	-	-	-	2.764	18:01 Dec 28	2.760	0.025	-	2.735	375	Call Put
Oct'19	2.770	2.770	2.770	2.787	18:01 Dec 28	2.787	0.025	18	2.762	910	Call Put
Nov'19	-	-	-	2.855	18:01 Dec 28	2.854	0.025	6	2.829	411	Call Put
Dec'19	2.970	2.970	2.970	2.989	18:01 Dec 28	2.989	0.022	13	2.967	543	Call Put
Feb'20	-	-	-	3.148	18:01 Dec 28	3.067	0.017	-	3.050	230	Call Put
Mar'20	-	-	-	2.995	18:01 Dec 28	3.002	0.017	-	2.985	309	Call Put
Apr'20	-	-	-	2.692	18:01 Dec 28	2.715	0.015	-	2.700	249	Call Put
May'20	-	-	-	2.685	18:01 Dec 28	2.706	0.015	-	2.691	120	Call Put
Jun'20	-	-	-	2.717	18:01 Dec 28	2.737	0.015	-	2.722	108	Call Put
Jul'20	-	-	-	2.754	18:01 Dec 28	2.772	0.015	-	2.757	186	Call Put
Aug'20	-	-	-	2.783	18:01 Dec 28	2.799	0.015	-	2.784	120	Call Put

REFRESH DATA

Extreme Futures: Movers & Shakers



Lt Crude 53.94	Corn 350 76.14	Sep'20 2.789	Gold 1146.7	Euro 1.04895	2.804	0.015	-	2.789	121	Call Put
Nat Gas 3.814	Cotton #2 76.14	Oct'20 2.822	Copper 2.5040	USD Index 10.822	2.837	0.015	-	2.822	84	Call Put

Month	Greystone	NYMEX	Difference
May-16	\$ 2.35	\$ 1.92	\$ 0.43
Jun-16	\$ 3.10	\$ 2.59	\$ 0.51
Jul-16	\$ 3.28	\$ 2.82	\$ 0.46
16-Aug	\$ 2.87	\$ 2.67	\$ 0.20
16-Sep	\$ 3.16	\$ 2.85	\$ 0.30
16-Oct	\$ 3.29	\$ 2.95	\$ 0.34
Average =	\$	\$ 0.37	