



120 Prosperous Place, Suite 201 ~ Lexington, KY 40509
Phone (800) 977-2363

Remit Payments to:
P.O. Box 841894 ~ Dallas, TX 75284-1894

RECEIVED

OCT 3 2016

PUBLIC SERVICE
COMMISSION

September 30, 2016

Talina Mathews
Executive Director
Public Service Commission
211 Sower Blvd.
Frankfort, KY 40601

Re: Sentra Corporation GCR

Case No. 2016-00357

Dear Ms. Mathews:

Sentra Corporation is submitting an interim filing for rates to be effective November 1, 2016. If you have any questions, I can be reached at mwallen@mhp.energy or on my direct line at 859.263.6727.

Respectfully,

A handwritten signature in blue ink that reads "D. Michael Wallen".

D. Michael Wallen
Senior Vice President of Operations

Sentra Corporation

**QUARTERLY REPORT OF GAS COST
RECOVERY RATE CALCULATION**

Date Filed: **3-Oct-16**

Date Rates to be Effective: **November 1, 2016**

Reporting Period is Calendar Quarter Ended: **July 31, 2016**

SCHEDULE I
GAS COST RECOVERY RATE SUMMARY

<u>Component</u>	<u>Unit</u>	<u>Amount</u>
Expected Gas Cost (EGC)	\$/Mcf	3.8612
+ Refund Adjustment (RA)	\$/Mcf	-
+ Actual Adjustment (AA)	\$/Mcf	#DIV/0!
+ Balance Adjustment (BA)	\$/Mcf	-
= Gas Cost Recovery Rate (GCR)	\$/Mcf	#DIV/0!

GCR to be effective for service rendered from: **** 2016

<u>A. EXPECTED GAS COST CALCULATION</u>	<u>Unit</u>	<u>Amount</u>
Total Expected Gas Cost (Schedule II)	\$	109,567.73
+ Sales for the 12 months ended 7/31/2016	Mcf	28,376.60
- Expected Gas Cost (EGC)	\$/Mcf	3.8612
 <u>B. REFUND ADJUSTMENT CALCULATION</u>	 <u>Unit</u>	 <u>Amount</u>
Supplier Refund Adjustment for Reporting Period (Sch. III)	\$/Mcf	\$ -
+ Previous Quarter Supplier Refund Adjustment	\$/Mcf	\$ -
+ Second Previous Quarter Supplier Refund Adjustment	\$/Mcf	\$ -
+ Third Previous Quarter Supplier Refund Adjustment	\$/Mcf	\$ -
= Refund Adjustment (RA)	\$/Mcf	\$ -
 <u>C. ACTUAL ADJUSTMENT CALCULATION</u>	 <u>Unit</u>	 <u>Amount</u>
Actual Adjustment for the Reporting Period (Schedule IV)	\$/Mcf	#DIV/0!
+ Previous Quarter Reported Actual Adjustment	\$/Mcf	
+ Second Previous Quarter Reported Actual Adjustment	\$/Mcf	
+ Third Previous Quarter Reported Actual Adjustment	\$/Mcf	
= Actual Adjustment (AA)	\$/Mcf	#DIV/0!
 <u>D. BALANCE ADJUSTMENT CALCULATION</u>	 <u>Unit</u>	 <u>Amount</u>
Balance Adjustment for the Reporting Period (Schedule V)	\$/Mcf	\$ -
+ Previous Quarter Reported Balance Adjustment	\$/Mcf	
+ Second Previous Quarter Reported Balance Adjustment	\$/Mcf	
+ Third Previous Quarter Reported Balance Adjustment	\$/Mcf	
= Balance Adjustment (BA)	\$/Mcf	\$ -

SCHEDULE II
EXPECTED GAS COST

Actual* Mcf Purchase for 12 months ended

07/31/16

(1) <u>Supplier</u>	(2) NYMEX <u>Dth</u>	(3) Heat <u>Rate</u>	(4) <u>Mcf</u>	(5) ** <u>Rate</u>	<u>Greystone</u>	(6) (2) x (5)+(6) <u>Cost</u>
					<u>Adder</u>	
Greystone, LLC	3,2000	1.0660	543.60	3.4112	0.4500	2,098.95
Greystone, LLC	3,2000	1.0660	729.70	3.4112	0.4500	2,817.52
Greystone, LLC	3,2000	1.0660	1,992.90	3.4112	0.4500	7,694.99
Greystone, LLC	3,2000	1.0660	3,204.80	3.4112	0.4500	12,374.37
Greystone, LLC	3,2000	1.0660	5,943.70	3.4112	0.4500	22,949.81
Greystone, LLC	3,2000	1.0660	7,136.30	3.4112	0.4500	27,554.68
Greystone, LLC	3,2000	1.0660	1,782.00	3.4112	0.4500	6,880.66
Greystone, LLC	3,2000	1.0660	4,352.70	3.4112	0.4500	16,806.65
Greystone, LLC	3,2000	1.0660	1,175.50	3.4112	0.4500	4,538.84
Greystone, LLC	3,2000	1.0660	568.60	3.4112	0.4500	2,195.48
Greystone, LLC	3,2000	1.0660	669.40	3.4112	0.4500	2,584.69
Greystone, LLC	3,2000	1.0660	277.40	3.4112	0.4500	1,071.10
Totals	38,4000		28,376.60			109,567.73

Line losses are 0.00% for 12 months ended 7/31/2016 based on purchases of 28,376.60 Mcf and sales of 28,376.60 Mcf.

	<u>Unit</u>	<u>Amount</u>
Total Expected Cost of Purchases (6) (to Schedule IA.)	\$	\$ 109,567.73
/ Mcf Purchases (4)	Mcf	<u>28,376.60</u>
= Average Expected Cost Per Mcf Purchased	\$/Mcf	\$ 3.8612
x Allowable Mcf Purchases (not to exceed 5%)	Mcf	<u>28,376.60</u>
= Total Expected Gas Cost	\$	\$ 109,567.73

*Or adjusted pursuant to Gas Cost Adjustment Clause and explained herein.

**Supplier's tariff sheets or notices are attached.

SCHEDULE III
SUPPLIER REFUND ADJUSTMENT

Details for the 3 months ended 7/31/2016

<u>Particulars</u>	<u>Unit</u>	<u>Amount</u>
Total supplier refunds received	\$	\$ -
+ Interest	\$	\$ -
<hr/>		
= Refund Adjustment including interest	\$	\$ -
+ Sales for 12 months ended 7/31/2016	Mcf	28,377
<hr/>		
=Supplier Refund Adjustment for the Reporting Period (to Schedule IB.)	\$/Mcf	\$ -

SCHEDULE IV
ACTUAL ADJUSTMENT

For the 3 month period ended 7/31/2016

This schedule will not be used until new PGA has been used 6 months

<u>Particulars</u>	<u>Unit</u>	Month 1	Month 2	Month 3
Total Supply Volumes Purchased	Mcf	-	-	-
Total Cost of Volumes Purchased	\$			
/ Total Sales	Mcf	-	-	-
<hr/>				
(may not be less than 95% of supply volumes) (G8*0.95)				
= Unit Cost of Gas	\$/Mcf	#DIV/0!	#DIV/0!	#DIV/0!
- EGC in effect for month	\$/Mcf	\$ -	\$ -	\$ -
= Difference	\$/Mcf	#DIV/0!	#DIV/0!	#DIV/0!
[(Over-)/Under-Recovery]				
x Actual sales during month	Mcf	-	-	-
= Monthly cost difference	\$	#DIV/0!	#DIV/0!	#DIV/0!

	<u>Unit</u>	<u>Amount</u>
Total cost difference (Month 1 + Month 2 + Month 3)	\$	#DIV/0!
+ Sales for 12 months ended <u>7/31/2016</u>	Mcf	<u>28,377</u>
= Actual Adjustment for the Reporting Period (to Schedule IC.)	\$/Mcf	#DIV/0!

*Enter monthly Mcf purchases first
Enter monthly \$ purchases second*

Enter EGC that the Commission approved for months 1, 2, and 3

Enter monthly Mcf sales third

SCHEDULE V
BALANCE ADJUSTMENT

Appendix B
Page 6

For the 3 month period ended 7/31/2016

Line	Particulars	Unit	Amount
	Utility Gas Management		-
(1)	Total cost difference from actual adjustment used to compute AA of the GCR effective four quarters prior to the effective date of the currently effective GCR.		-
1		\$	-
2 Less:	Dollars amount resulting from the AA of _____ \$/MCF as used to compute the GCR in effect four quarters prior to the effective date of the currently effective GCR times the sales of 28,377 MCF during the 12 month period the AA was in effect.		
3		\$	0.00
4 Equals:	Balance Adjustment for the AA.	\$	-
(3)	Total Supplier Refund Adjustment including interest used to compute RA of the GCR effective four quarters prior to the effective date of the currently effective GCR.		-
5		\$	-
6 Less:	Dollar amount resulting from the RA of _____ \$/MCF as used to compute the OCR in effect four quarters prior to the effective GCR times the sales of 28,377 MCF during the 12 month period the RA was in effect.		
7		\$	-
8 Equals:	Balance Adjustment for the RA.	\$	-
(3)	Total Balance Adjustment used to compute RA of the GCR effective four quarters prior to the effective date of the currently effective GCR.		-
9		\$	-
10 Less:	Dollar amount resulting from the BA of _____ \$/MCF four quarters prior to the effective date of the currently effective GCR times the sales of 28,377 MCF during the 12 month period the BA was in effect.		
11		\$	-
12 Equals:	Balance Adjustment for the BA.	\$	-
13	Total Balance Adjustment Amount (1) + (2) + (3)	\$	0.00
14 Divided By:	Sales for 12 months ended 7/31/2016	\$	28,377
15 Equals:	Balance Adjustment for the Reporting Period (to Schedule ID).	\$/MCF	0.000000

Premium Subscriber Login . Classic Members

FREE Quotes & Charts for Commodities, Forex, Stocks & Ec

HOME | COMMODITY CHARTS | COMMODITY QUOTES | MY MENU | FUTURES NEWS | PREMIUM FEATURES | FOREX CHARTS | FOREX QUOTES | STOCKS

Search

Oil Futures Prices

View By Sector
 Exchange

- CATTLE / HOGS
- CURRENCY
- FOOD / FIBER
- GRAIN / OILSEED
- INDEX
- INTEREST
- METAL
- OIL / ENERGY
 - Popular Markets
 - Crude Oil (b) NYMEX
 - Heating Oil (b) NYMEX
 - Natural Gas (b) NYMEX
 - NYH RBOB Gas (b) NYMEX
 - Less Popular

Quick Links

- Chart/Quote Menu
- My Chart Quote Menu
- Premium Features
- Markets at a Glance
- Advanced Analytical Charts
- Dynamic Intraday Charts
- Spread Charts
- Download EOD Data
- Email Price Alerts

Commodity Futures Price Quotes For
Natural Gas (Globex) (NYMEX)

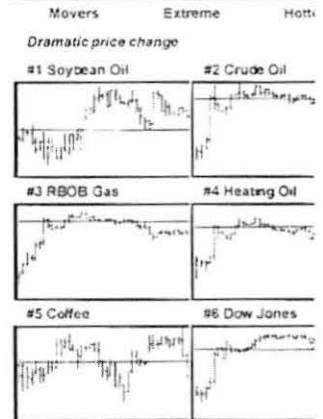
Click to view NYMEX Natural Gas (Globex) data from at least 12 months prior to the current contract period.

Trade Natural Gas (Globex) now with

Click for Chart	Open	High	Low	Last	Time	Set	Chg	Vol	Prior Day Set	Op Int	Op's
Nov'16	3.010	3.032	2.958	2.968	09:33 Sep 29	-	-0.034	20409	3.002	290283	Call Put
Dec'16	3.199	3.218	3.158	3.169	09:33 Sep 29	-	-0.030	5267	3.199	96195	Call Put
Jan'17	3.350	3.350	3.288	3.297	09:32 Sep 29	-	-0.030	3073	3.327	161996	Call Put
Feb'17	3.341	3.345	3.294	3.304	09:33 Sep 29	-	-0.027	928	3.331	42619	Call Put
Mar'17	3.293	3.298	3.249	3.256	09:33 Sep 29	-	-0.027	1708	3.283	100299	Call Put
Apr'17	3.045	3.047	3.012	3.017	09:33 Sep 29	-	-0.019	1411	3.036	90345	Call Put
May'17	3.007	3.007	2.975	2.979	09:32 Sep 29	-	-0.016	644	2.995	34320	Call Put
Jun'17	3.031	3.034	3.002	3.008	09:32 Sep 29	-	-0.015	510	3.023	31421	Call Put
Jul'17	3.060	3.060	3.031	3.035	09:32 Sep 29	-	-0.015	299	3.050	19400	Call Put
Aug'17	3.058	3.064	3.039	3.040	09:32 Sep 29	-	-0.014	259	3.054	16758	Call Put
Sep'17	3.045	3.045	3.020	3.020	09:32 Sep 29	-	-0.017	514	3.037	19599	Call Put
Oct'17	3.060	3.062	3.037	3.039	09:32 Sep 29	-	-0.016	673	3.055	43402	Call Put
Nov'17	3.109	3.110	3.087	3.087	09:32 Sep 29	-	-0.016	672	3.103	15526	Call Put
Dec'17	3.240	3.240	3.219	3.220	09:32 Sep 29	-	-0.012	677	3.232	20451	Call Put
Jan'18	3.337	3.339	3.324	3.329	09:32 Sep 29	-	-0.004	496	3.333	16263	Call Put
Feb'18	3.291	3.291	3.291	3.291	09:32 Sep 29	-	-0.005	189	3.296	4324	Call Put
Mar'18	3.206	3.206	3.206	3.206	09:32 Sep 29	-	-0.008	247	3.214	14544	Call Put
Apr'18	2.808	2.808	2.795	2.795	09:31 Sep 28	-	-0.012	56	2.807	16910	Call Put
May'18	2.756	2.761	2.748	2.751	09:32 Sep 29	-	-0.008	132	2.759	5990	Call Put
Jun'18	2.766	2.766	2.766	2.766	09:32 Sep 29	-	-0.008	1	2.774	3252	Call Put
Jul'18	2.790	2.790	2.790	2.790	09:31 Sep 29	-	-0.013	1	2.803	3564	Call Put
Aug'18	2.797	2.797	2.797	2.797	09:31 Sep 29	-	-0.012	1	2.809	1828	Call Put
Sep'18	2.786	2.786	2.786	2.786	09:31 Sep 29	-	-0.009	1	2.795	4023	Call Put
Oct'18	2.816	2.816	2.816	2.816	09:32 Sep 29	-	-0.008	5	2.824	8353	Call Put
Nov'18	2.863	2.863	2.863	2.863	08:27 Sep 29	-	-0.011	1	2.874	3992	Call Put
Dec'18	3.000	3.000	3.000	3.000	09:32 Sep 29	-	-0.014	1	3.014	2558	Call Put
Jan'19	-	-	-	3.175*	17:24 Sep 23	-	-	-	3.119	1288	Call Put
Feb'19	-	-	-	3.093*	13:57 Sep 27	-	-	-	3.084	470	Call Put
Mar'19	-	-	-	3.083*	17:24 Sep 23	-	-	-	3.019	481	Call Put
Apr'19	-	-	-	2.758*	17:24 Sep 23	-	-	-	2.684	557	Call Put
May'19	-	-	-	2.757*	17:24 Sep 23	-	-	-	2.676	337	Call Put
Jun'19	-	-	-	2.834*	17:24 Sep 23	-	-	-	2.706	302	Call Put
Jul'19	-	-	-	2.810*	17:24 Sep 23	-	-	-	2.740	344	Call Put
Aug'19	-	-	-	2.883*	17:24 Sep 23	-	-	-	2.753	415	Call Put
Sep'19	-	-	-	2.871*	17:24 Sep 23	-	-	-	2.741	292	Call Put
Oct'19	-	-	-	2.850*	17:24 Sep 23	-	-	-	2.769	289	Call Put
Nov'19	-	-	-	2.960*	17:24 Sep 23	-	-	-	2.834	318	Call Put
Dec'19	-	-	-	3.010*	17:24 Sep 23	-	-	-	2.979	323	Call Put
Feb'20	-	-	-	3.095*	16:26 Sep 27	-	-	-	3.069	198	Call Put
Mar'20	-	-	-	3.025*	14:00 Sep 27	-	-	-	3.004	141	Call Put
Apr'20	-	-	-	2.831*	17:24 Sep 23	-	-	-	2.712	222	Call Put
May'20	-	-	-	2.988*	17:24 Sep 23	-	-	-	2.705	111	Call Put
Jun'20	-	-	-	2.831*	17:24 Sep 23	-	-	-	2.737	91	Call Put
Jul'20	-	-	-	2.831*	17:24 Sep 23	-	-	-	2.774	178	Call Put
Aug'20	-	-	-	2.831*	17:24 Sep 23	-	-	-	2.802	114	Call Put

REFRESH DATA

Extreme Futures: Movers & Shakers



Lt Crude 47.27	Corn 331	Gold 1321.8	Euro 1.12485	SP500 mini 2161.50	2.807	116	Call Put
Nat Gas 2.967	Cotton #2 58.19	Copper 2.1955	USD Index 95.520	DJ 18249	2.841	77	Call Put

<u>Month</u>	<u>Greystone</u>	<u>NYMEX</u>	<u>Difference</u>
Feb-16	\$ 2.54	\$ 1.99	\$ 0.55
Mar-16	\$ 2.10	\$ 1.73	\$ 0.37
Apr-16	\$ 2.29	\$ 1.92	\$ 0.37
May-16	\$ 2.35	\$ 1.92	\$ 0.43
Jun-16	\$ 3.10	\$ 2.59	\$ 0.51
Jul-16	\$ 3.28	\$ 2.82	\$ 0.46

Average = \$ 0.45