



SALT RIVER ELECTRIC

A Touchstone Energy Cooperative 

111 West Brashear Avenue • Bardstown, Kentucky 40004
(502) 348-3931 • (502) 955-9732 • Fax (502) 348-1993

RECEIVED

APR - 7 2016

Public Service
Commission

April 1, 2016

Mr. Jeff Derouen
Executive Director
KY Public Service Commission
PO Box 615
Frankfort KY 40602-0615

Re: KY PSC Case No. 2016-00019
Fuel Adjustment Clause
May 1, 2015, through October 31, 2015
Salt River Electric Cooperative Corporation

Dear Mr. Derouen:

Enclosed are the originals and four (4) copies of the following with regard to the above-named case:

- Hearing Notice published in the April 2016 edition of *Kentucky Living Magazine*
- Affidavit of Mailing of Hearing Notice from *Kentucky Living Magazine* editor

Sincerely,

Kathy Brown
Executive Assistant

Enclosures

RECEIVED

AFFIDAVIT OF MAILING
OF HEARING NOTICE

APR 07 2016
PUBLIC SERVICE
COMMISSION

Notice is hereby given that the April issue of *KENTUCKY LIVING*, bearing official notice of hearing of PSC Case No. 2016-00019, for the purposes of examining the application of the Fuel Adjustment Clause of SALT RIVER ELECTRIC COOPERATIVE CORPORATION from May 1, 2015, through October 31, 2015, was entered as direct mail at Florence, Kentucky on March 29, 2016.



Anita Travis Richter
Editor
Kentucky Living

County of Jefferson
State of Kentucky

Sworn to and subscribed before me, a Notary Public,

This 29th day of March, 2016.

My commission expires 2-12-19



Notary Public, State of Kentucky

P.O. Box 32170
Louisville, KY 40232

4515 Bishop Lane
Louisville, KY 40218

(502) 451-2430
(800) KY-LIVING
(800) 595-4846
Fax: (502) 459-1611

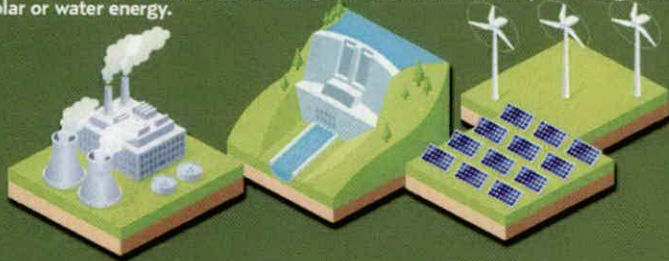
ENERGY 101

Understanding 'The GRID'

Getting electricity from a power plant to your home, farm, business or industry requires a series of coordinated processes across many miles of interconnected wires. This massive system of generation, transmission and distribution is simply called "the Grid," the largest, most complicated machine ever built by man.

GENERATION

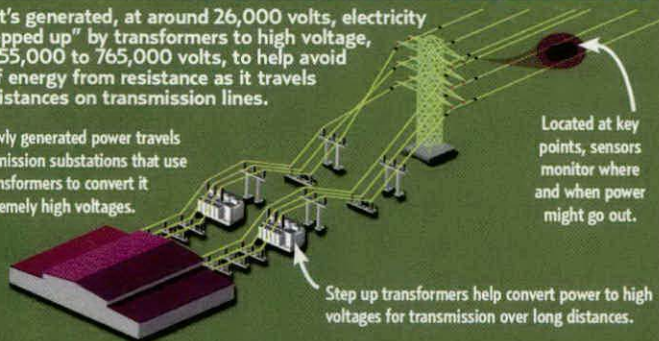
Electricity starts at a generator which can be powered by a burning fossil fuel, like coal or natural gas, by maintaining a nuclear reaction, or by collecting wind, solar or water energy.



TRANSMISSION

After it's generated, at around 26,000 volts, electricity is "stepped up" by transformers to high voltage, from 155,000 to 765,000 volts, to help avoid loss of energy from resistance as it travels long distances on transmission lines.

The newly generated power travels to transmission substations that use transformers to convert it to extremely high voltages.

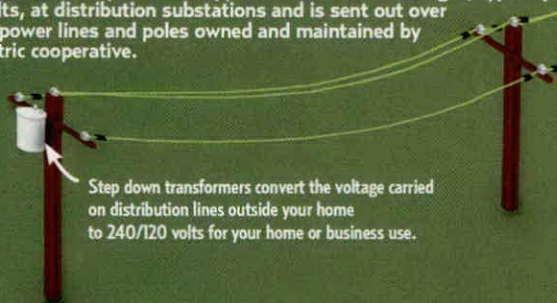


Located at key points, sensors monitor where and when power might go out.

Step up transformers help convert power to high voltages for transmission over long distances.

DISTRIBUTION

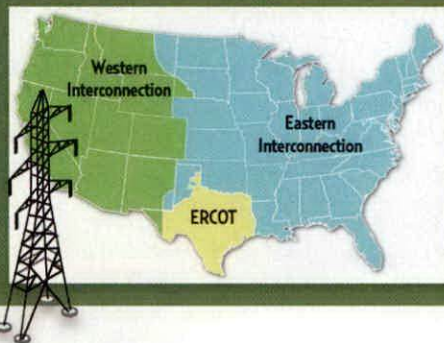
Transmitted electricity is then stepped down to lower voltages, typically 7,200 volts, at distribution substations and is sent out over the local power lines and poles owned and maintained by your electric cooperative.



Step down transformers convert the voltage carried on distribution lines outside your home to 240/120 volts for your home or business use.

INTERCONNECTIONS

The electric grid operates in three sections: the Western Interconnection, the Eastern Interconnection, and the Electric Reliability Council of Texas (ERCOT). The grid includes approximately 3,000 utilities and other entities, 7,000 power plants and 450,000 miles of transmission lines.



SOURCES: U.S. DEPARTMENT OF ENERGY; NRECA

RECEIVED

HEARING NOTICE

APR 7 2016

Public Service
Commission

A public hearing will be held on Thursday, April 7, 2016, at 9 a.m., Eastern Daylight Time, at the offices of the Kentucky Public Service Commission, 211 Sower Boulevard, Frankfort, Kentucky, to examine the application of the fuel adjustment clause of the following corporations for the period of May 1, 2015, through October 31, 2015. Individuals interested in attending this hearing shall notify the Public Service Commission in writing of their intent to attend no later than April 5, 2016. If no notices of intent to attend are received by this date, this hearing will be cancelled. Written notice of intent to attend this hearing should be sent to: Executive Director, Kentucky Public Service Commission, P.O. Box 615, Frankfort, Kentucky 40602.

Big Sandy RECC

Case No. 2016-00007

Blue Grass Energy Cooperative

Case No. 2016-00008

Clark Energy Cooperative

Case No. 2016-00009

Cumberland Valley Electric

Case No. 2016-00010

Farmers RECC

Case No. 2016-00011

Fleming-Mason Energy Cooperative

Case No. 2016-00012

Grayson RECC

Case No. 2016-00013

Inter-County Energy Cooperative

Case No. 2016-00014

Jackson Energy Cooperative

Case No. 2016-00015

Licking Valley RECC

Case No. 2016-00016

Meade County RECC

Case No. 2016-00025

Nolin RECC

Case No. 2016-00017

Owen Electric Cooperative

Case No. 2016-00018

Salt River Electric Cooperative

Case No. 2016-00019

Shelby Energy Cooperative

Case No. 2016-00020

South Kentucky RECC

Case No. 2016-00021

Taylor County RECC

Case No. 2015-00022