

# Goss ■ Samford PLLC



**Mark David Goss**  
mdgoss@gosssamfordlaw.com  
(859) 368-7740

October 20, 2014

*Via Hand-Delivery*

RECEIVED

Mr. Jeffrey Derouen  
Executive Director  
Kentucky Public Service Commission  
P.O. Box 615  
211 Sower Boulevard  
Frankfort, KY 40602

OCT 20 2014

PUBLIC SERVICE  
COMMISSION

Re: In the Matter of: An Application of South Kentucky Rural Electric Cooperative Corporation for a Certificate of Public Convenience and Necessity to Construct a New Headquarters Facility and For Approval to Transfer Ownership of Certain Assets or, in the Alternative, a Determination That Such Approval is Unnecessary  
PSC Case No. 2014-00355

Dear Mr. Derouen:

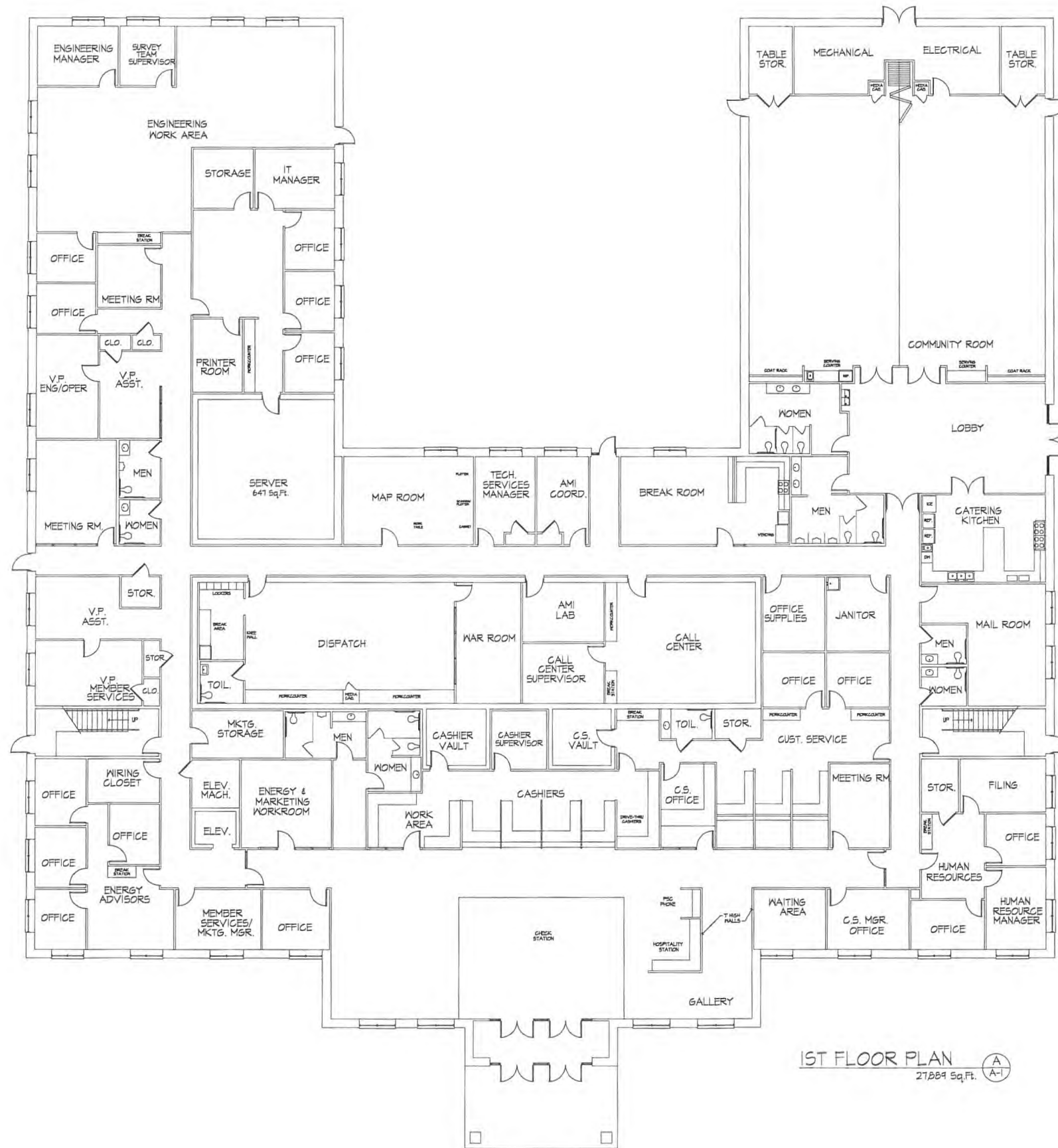
Enclosed please find for filing with the Commission in the above-referenced case one original (in paper medium) and twelve (12) copies (eleven (11) in paper medium and one (1) in portable document format on electronic storage medium) of certain plans and specifications and drawings which have been signed, sealed, and dated by an engineer registered in Kentucky related to South Kentucky Rural Electric Cooperative Corporation's Application. These documents are submitted in response to Ms. Linda Faulkner's letter dated October 17, 2014, and to address the filing deficiency discussed in said letter. Please return a file-stamped copy of the enclosed documents to me.

Do not hesitate to contact me if you have any questions.

Very truly yours,

Mark David Goss

Enclosures



1ST FLOOR PLAN (A-A1)  
27,889 Sq.Ft.



**SOUTH KENTUCKY RECC**  
SOMERSET, KENTUCKY

**RECEIVED**  
OCT 20 2014  
PUBLIC SERVICE  
COMMISSION



**OFFICE BUILDING**  
1st FLOOR - 27,889 Sq.Ft.  
2nd FLOOR - 9,175 Sq.Ft.  
TOTAL 37,064 Sq.Ft.

DATE	REVISION	BY

DESIGN DOCUMENTS: We warrant that we have prepared these documents in accordance with the applicable laws and regulations of the Commonwealth of Kentucky. We warrant that these documents are complete and correct as of the date of preparation. We warrant that we have not prepared these documents in violation of any applicable laws or regulations. We warrant that we have not prepared these documents in violation of any applicable laws or regulations. We warrant that we have not prepared these documents in violation of any applicable laws or regulations.

PROJECT NO.	1952-12
DESIGNED BY	BLL
DRAWN BY	BLL
CHECKED BY	MSF
REVIEWED BY	MSF
DATE	AUGUST 2014
SCALE	AS NOTED

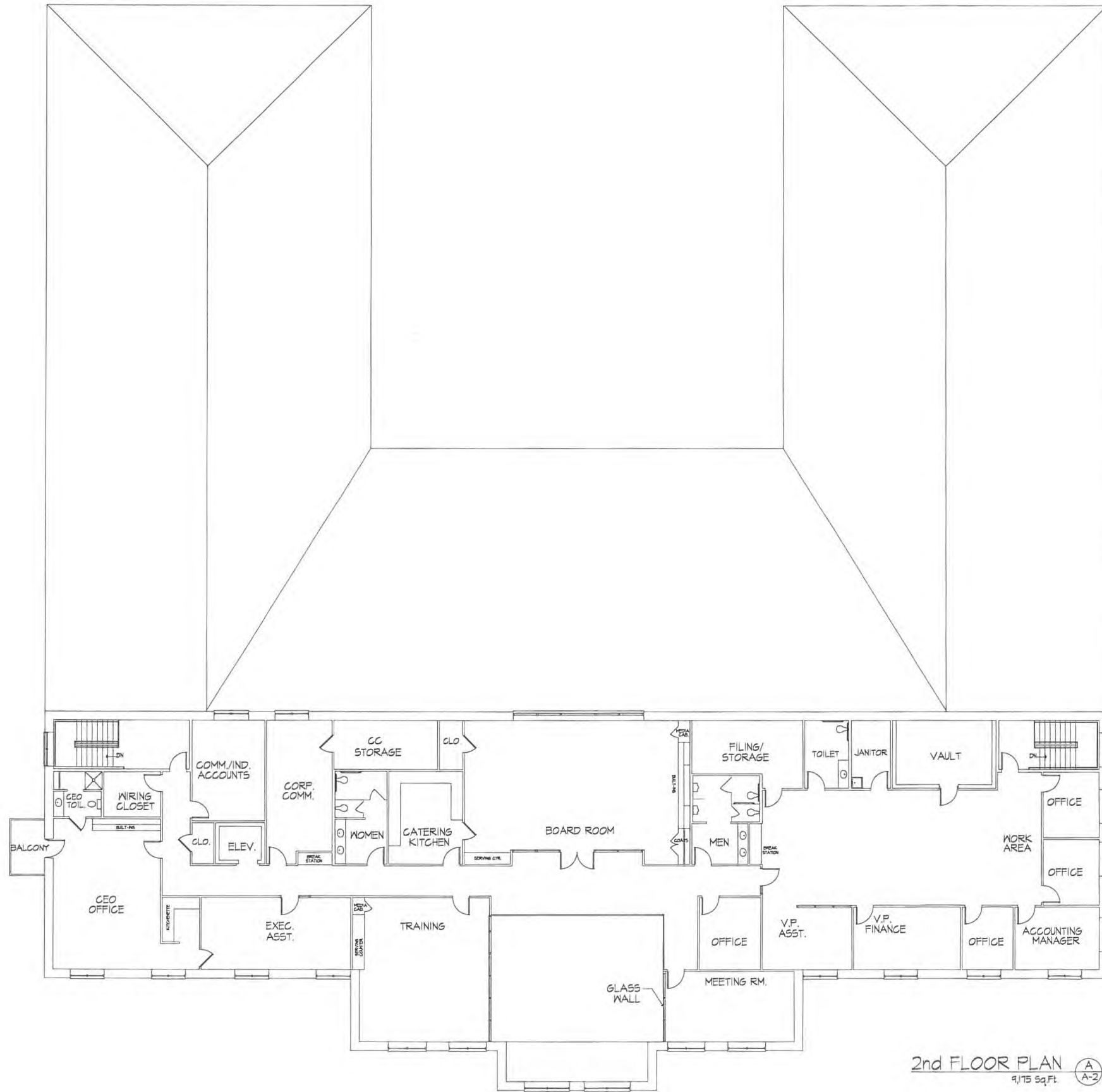
**Engineers  
Architects  
Planners**

**OF KENTUCKY, INC.**

624 Wellington Way  
Lexington, KY 40503  
www.msfa.com

Phone: (859)223-6664  
Fax: (859)223-2607

DRAWING NO.	<b>A-1</b>
SHEET	OF



2nd FLOOR PLAN A  
A-2  
1/175 Sq.Ft.



**SOUTH KENTUCKY RECC**  
SOMERSET, KENTUCKY

PROJECT NO.	DESIGNED BY	DRAWN BY	CHECKED BY	REVIEWED BY	DATE	SCALE
4552-12	BLL	BLL	MEF	MEF	AUGUST 2014	AS NOTED

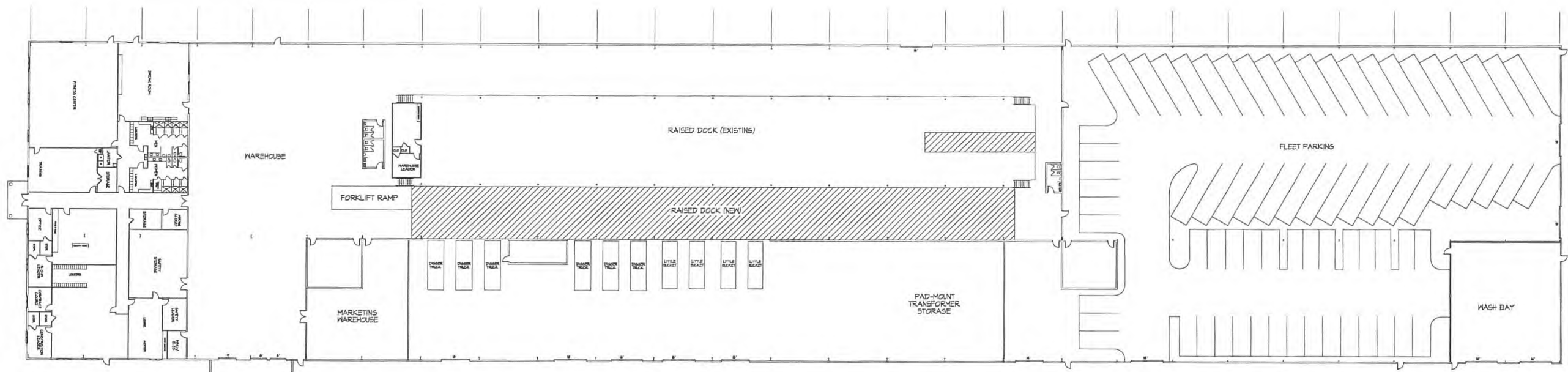
DATE	REVISION	BY

DESIGN DOCUMENTS  
The design professionals warrant any and all responsibility and liability for problems which arise from future design documents.  
This document discloses neither material considered confidential by MSE of Kentucky, Inc. and on which rights to reproduce the document or any part thereof, or to disclose any information contained therein to third parties, is to be used for any purpose without the written permission of MSE of Kentucky, Inc.

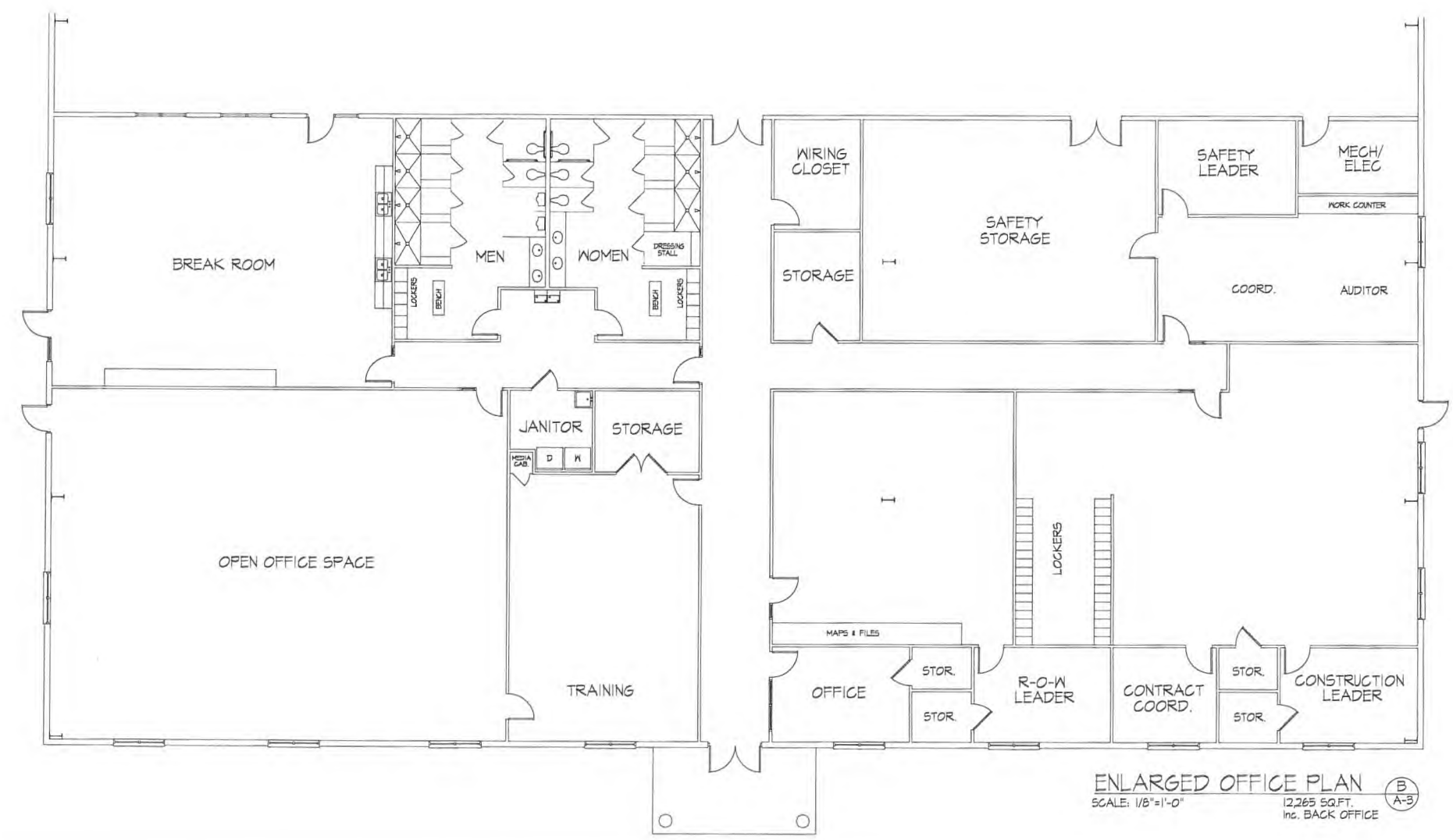
**MSE**  
OF KENTUCKY, INC.  
Engineers  
Architects  
Planners  
624 Wellington Way  
Lexington, KY 40503  
www.mselex.com  
Phone: (859)223-5694  
Fax: (859)223-2807



DRAWING NO.  
**A-2**  
SHEET OF



WAREHOUSE FLOOR PLAN (A)  
N.T.S. 123,124 Sq.Ft. (A-3)



ENLARGED OFFICE PLAN (B)  
SCALE: 1/8"=1'-0" 12,265 SQ.FT. inc. BACK OFFICE (A-3)



PROJECT NO. 4552-12

**SOUTH KENTUCKY RECC**  
SOMERSET, KENTUCKY

DATE	REVISION	BY

DESIGN DOCUMENTS:  
The design professional accepts any and all responsibility and liability for problems which arise from failure to use the design documents as intended. The design professional will not be responsible for any errors or omissions in the design documents which are not the result of the design professional's negligence or willful misconduct.  
The engineer discloses subject matter considered confidential by RECC of Kentucky, Inc. and on which copyright © 2014 is claimed. All rights are reserved. No part of this document may be reproduced or transmitted in any form or by any means, electronic, mechanical, photocopying, recording, or by any information storage and retrieval system, without the written permission of RECC of Kentucky, Inc.

PROJECT NO. 4552-12	DESIGNED BY: BLL
DRAWN BY: MGF	CHECKED BY: MGF
DATE: JULY 2014	SCALE: AS NOTED

**nse**  
OF KENTUCKY, INC.  
Engineers  
Architects  
Planners  
624 Wellington Way  
Lexington, KY 40503  
www.nsetex.com  
Phone: (659)223-5684  
Fax: (659)223-2607



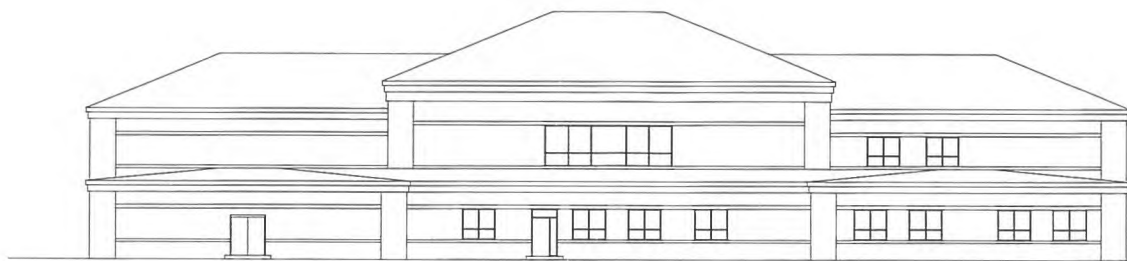
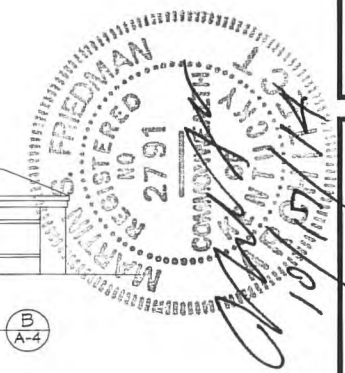
DRAWING NO.  
**A-3**  
SHEET OF



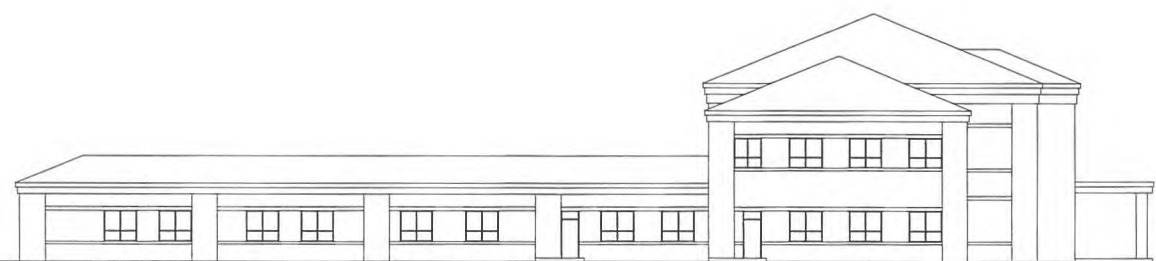
FRONT ELEVATION (A)  
A-4



RIGHT SIDE ELEVATION (B)  
A-4



REAR ELEVATION (C)  
A-4



LEFT SIDE ELEVATION (D)  
A-4

**SOUTH KENTUCKY RECC**  
SOMERSET, KENTUCKY

PROJECT NO.	DESIGNED BY	DRAWN BY	CHECKED BY	REVIEWED BY	DATE	SCALE
4552-12	BLL	BLL	M5F		AUGUST 2014	AS NOTED

DATE	REVISION	BY

DESIGN DOCUMENTS: THE USER SHALL BE RESPONSIBLE FOR PROBLEMS WHICH RESULT FROM THE USE OF THESE DOCUMENTS IN ANY STATE, JURISDICTION, AND THE USER SHALL BE RESPONSIBLE FOR OBTAINING ALL NECESSARY PERMITS AND APPROVALS FROM THE APPROPRIATE AGENCIES. THE USER SHALL BE RESPONSIBLE FOR OBTAINING ALL NECESSARY PERMITS AND APPROVALS FROM THE APPROPRIATE AGENCIES. THE USER SHALL BE RESPONSIBLE FOR OBTAINING ALL NECESSARY PERMITS AND APPROVALS FROM THE APPROPRIATE AGENCIES.

**MS&E**  
OF KENTUCKY, INC.

Engineers  
Architects  
Planners

624 Wellington Way  
Lexington, KY 40503  
www.ms&e.com

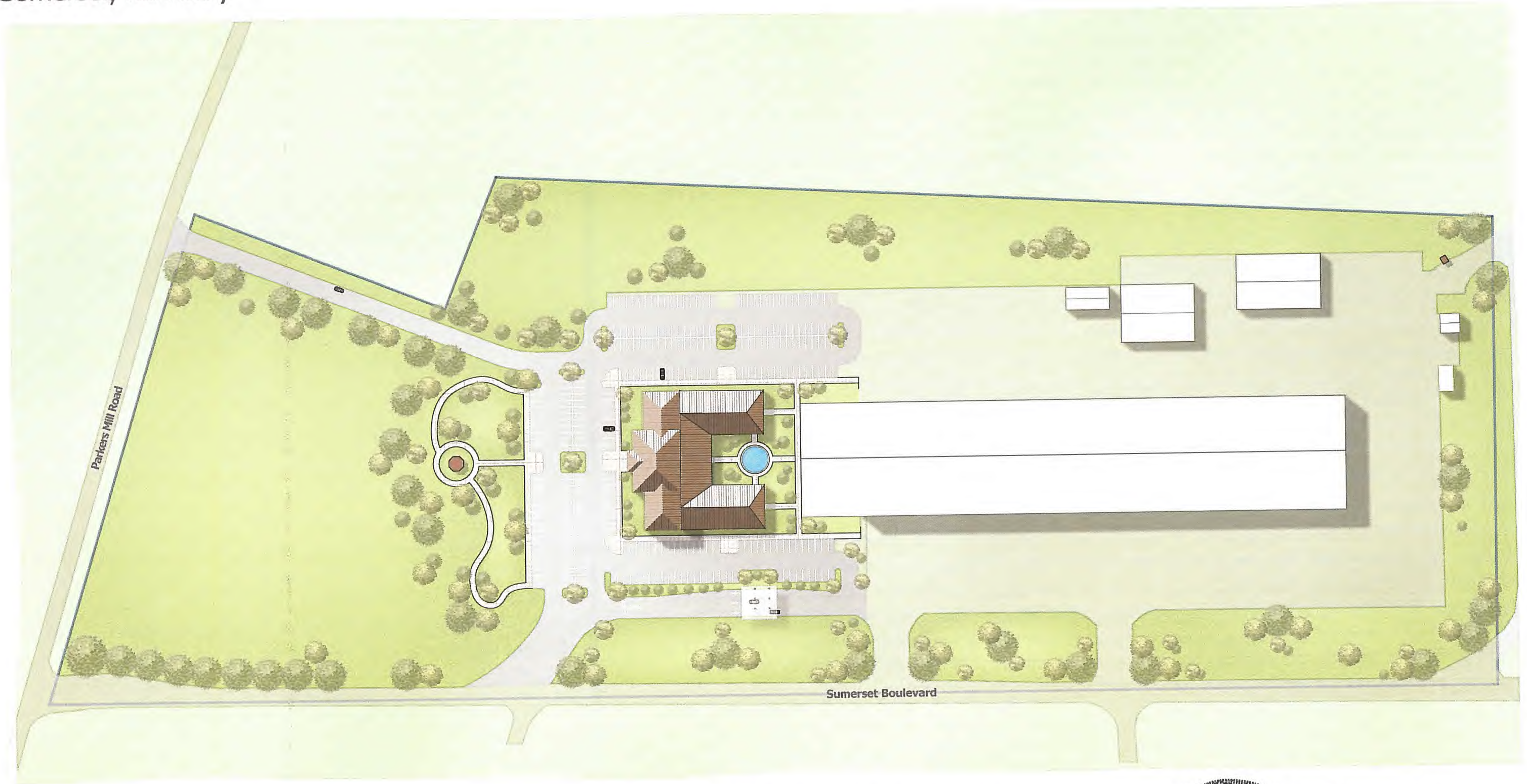
Phone: (609)223-5694  
Fax: (609)223-2607

**SK** South Kentucky  
**RECC**

DRAWING NO.  
**A-4**  
SHEET OF

# South Kentucky RECC

Somerset, Kentucky



## Conceptual Site Rendering