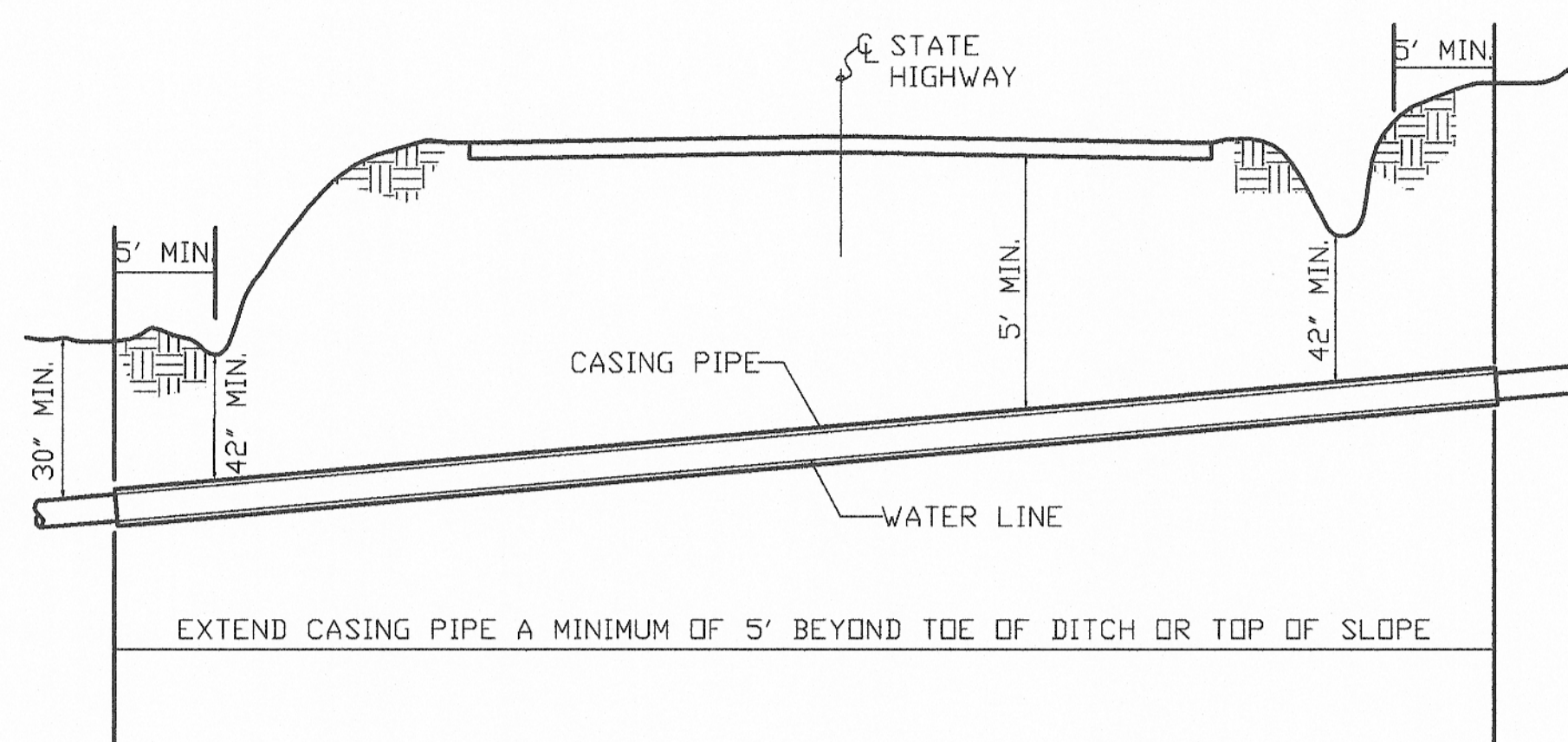
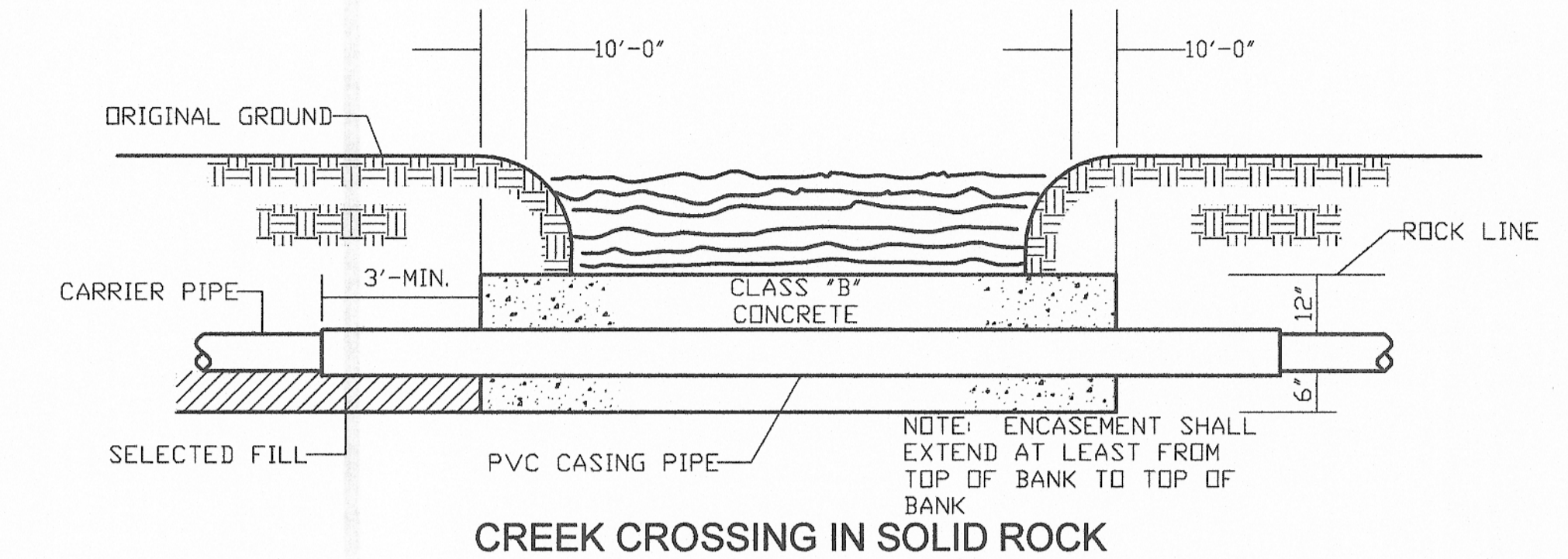


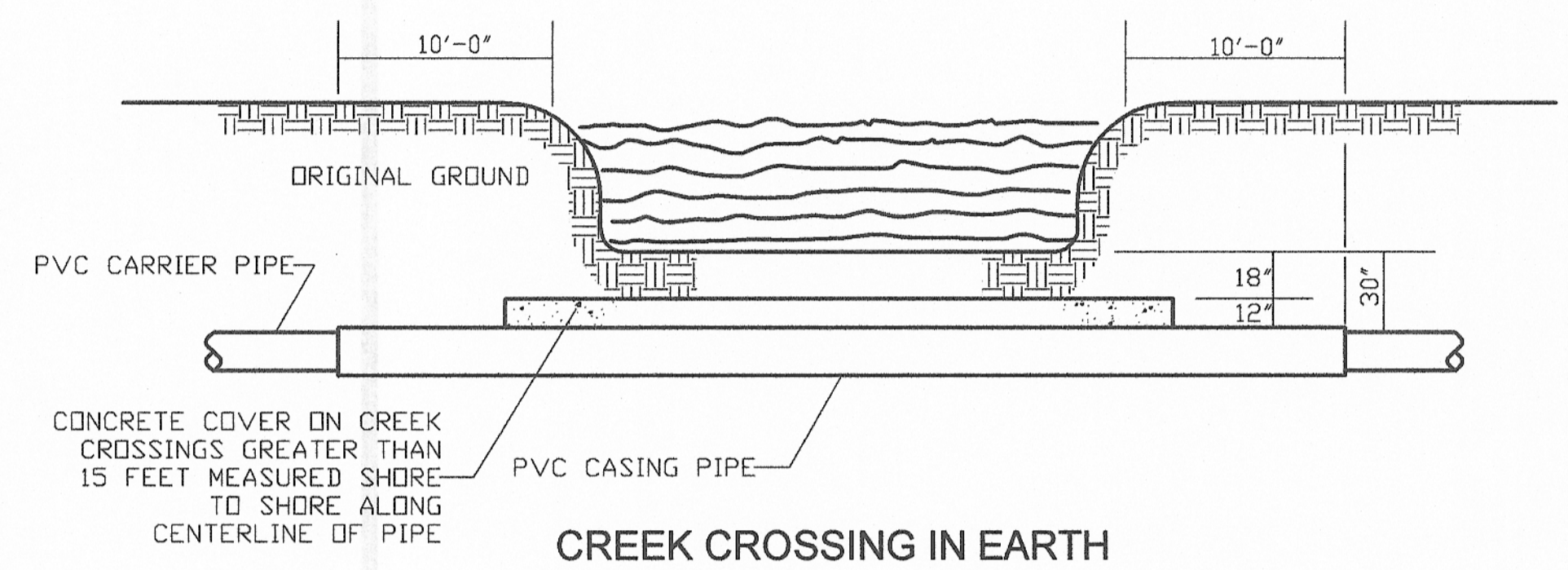
BACKFILLING DETAILS
N.T.S



TYP. STATE HIGHWAY ENCASED BORE CROSSING
N.T.S

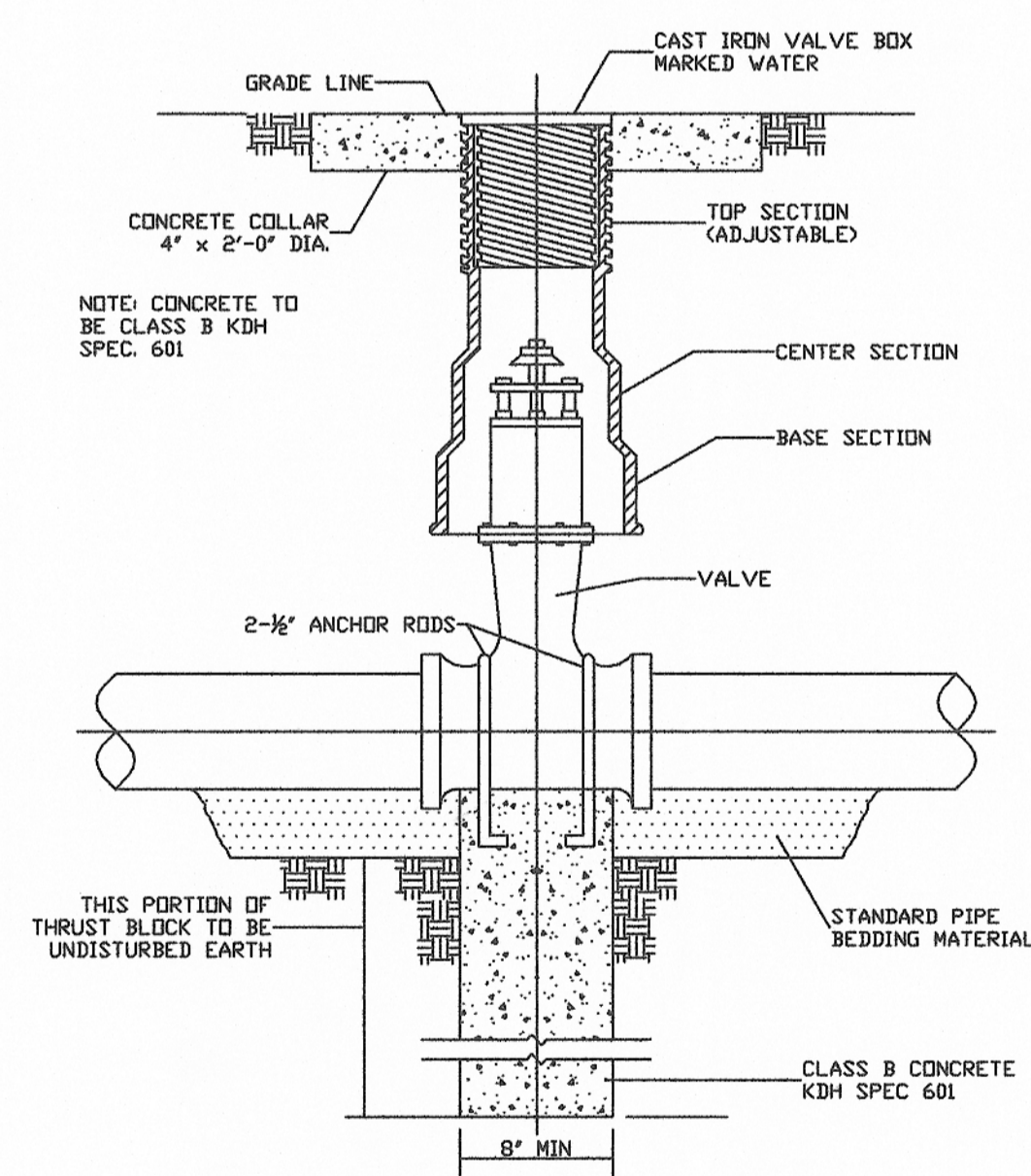


CREEK CROSSING IN SOLID ROCK

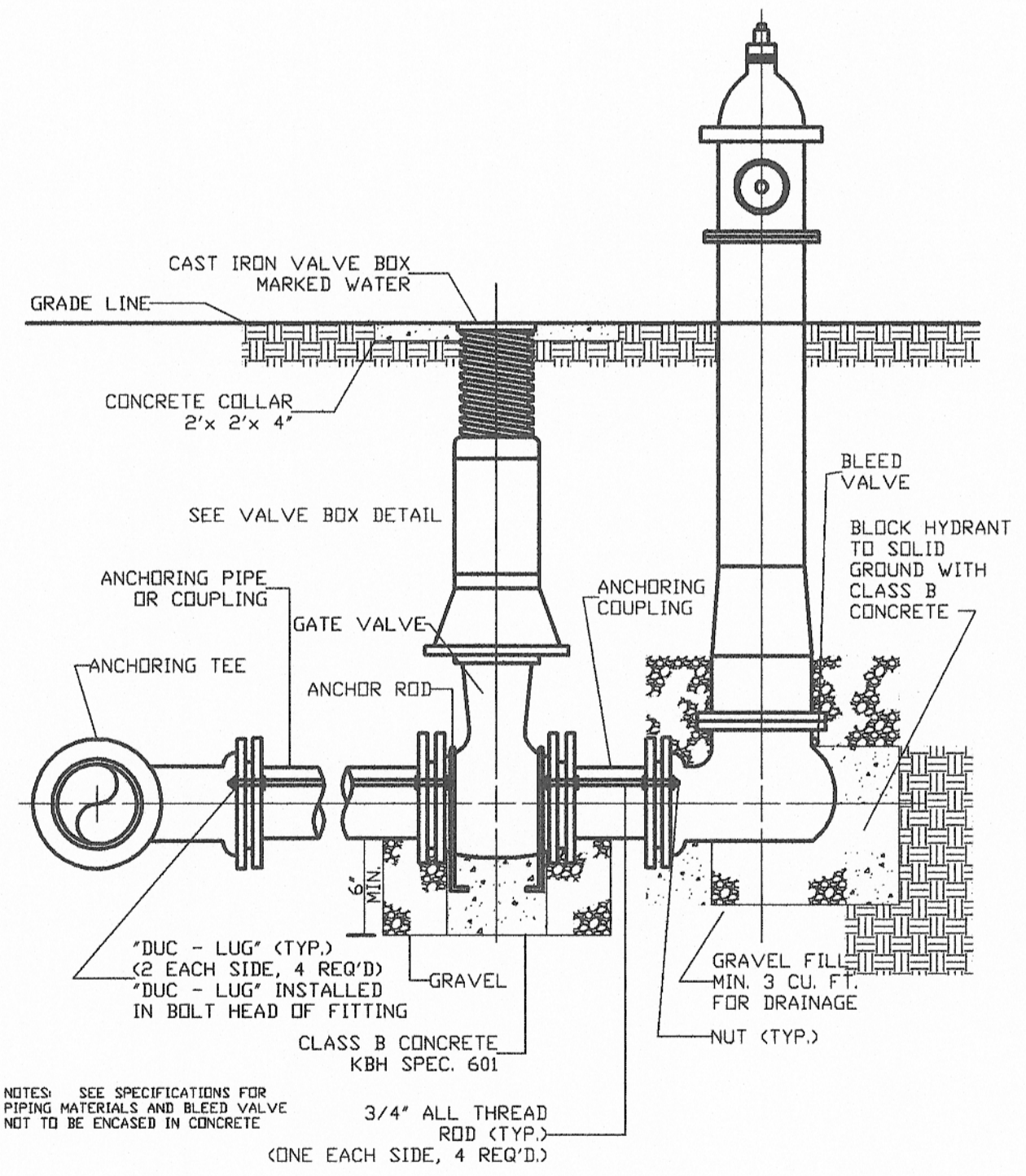


CREEK CROSSING IN EARTH

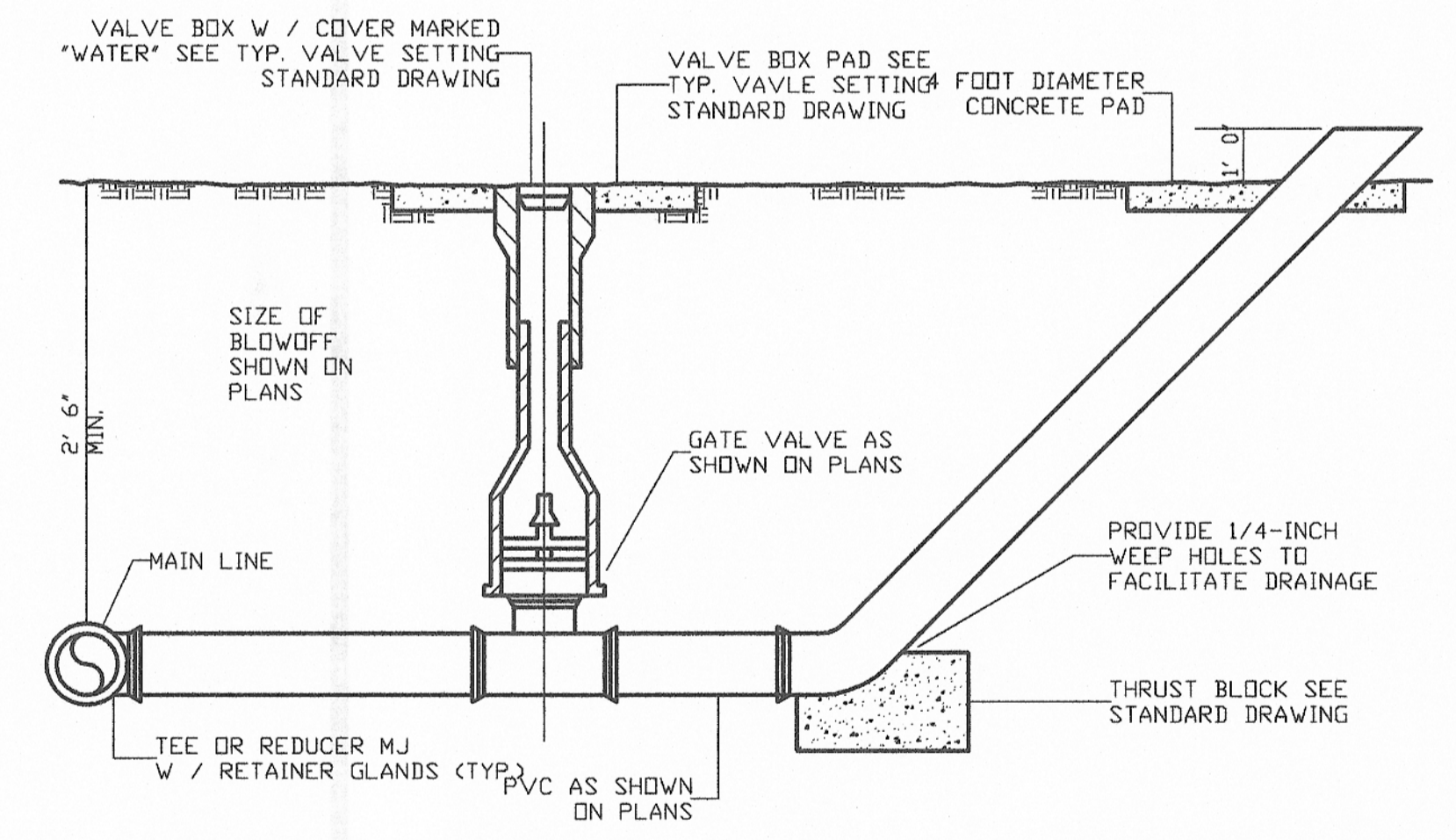
CREEK CROSSING DETAILS
N.T.S



GATE VALVE DETAIL
N.T.S



FLUSH HYDRANT DETAIL
N.T.S



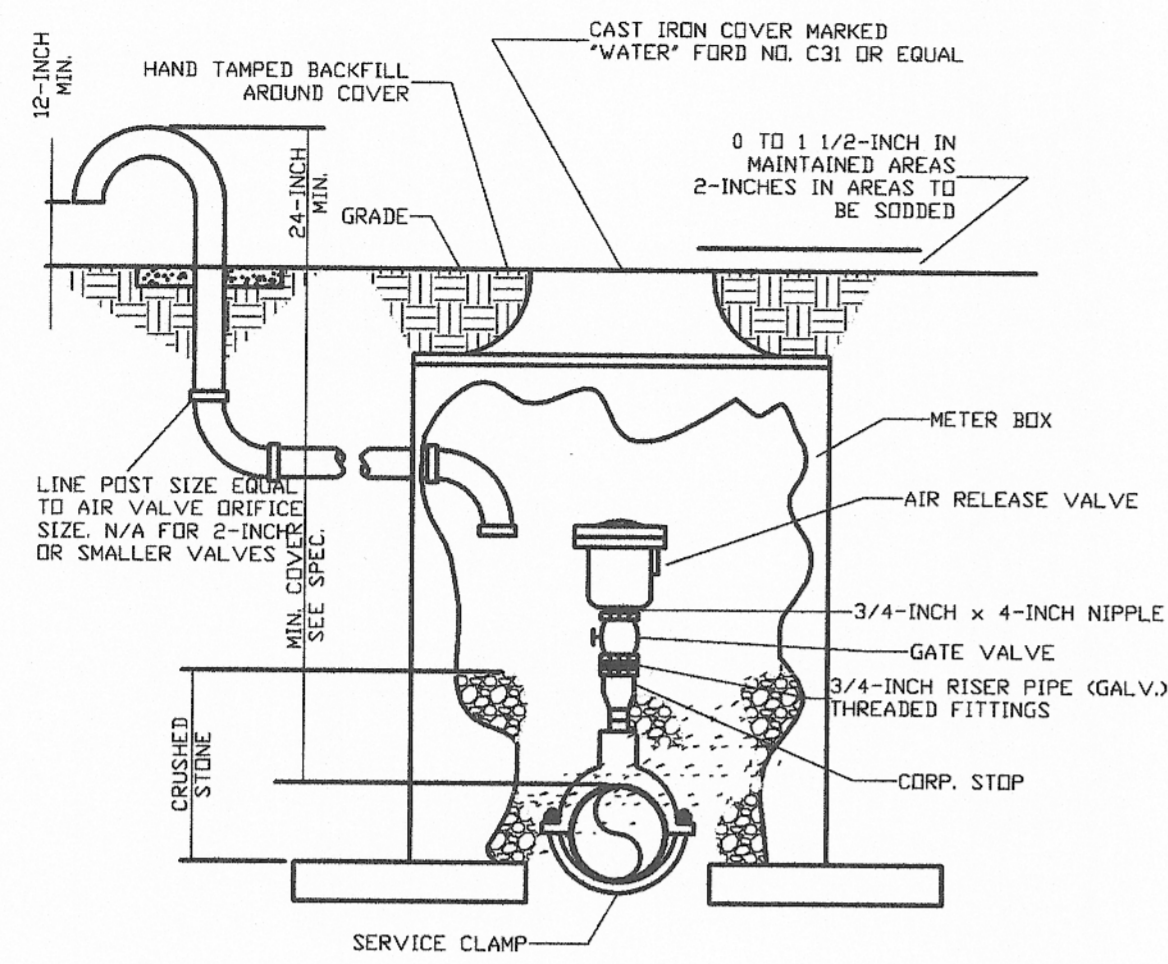
BLOWOFF DETAIL
N.T.S

PHASE 11-2 WATER LINE EXTENSIONS
ADAIR COUNTY WATER DISTRICT
ADAIR COUNTY, KENTUCKY

STANDARD DRAWINGS

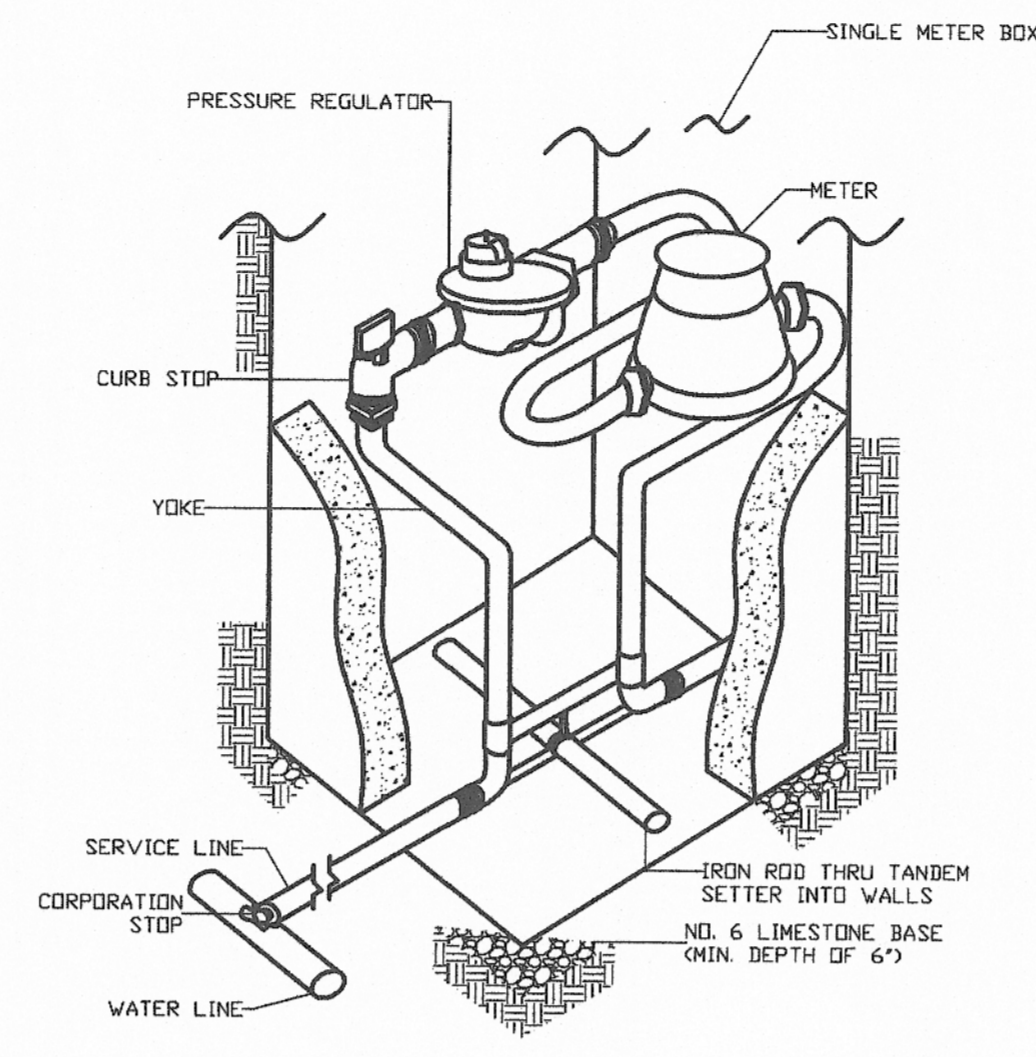
			556 CARLTON DRIVE LAWRENCEBURG, KY 40342	
	DRAWN BY: JRC	DATE: JAN 2010	REVISED	SHEET
	CHECKED BY: DSB	SCALE: AS SHOWN		SD-1

CHECKED BY: DMB PROJECT: 1049



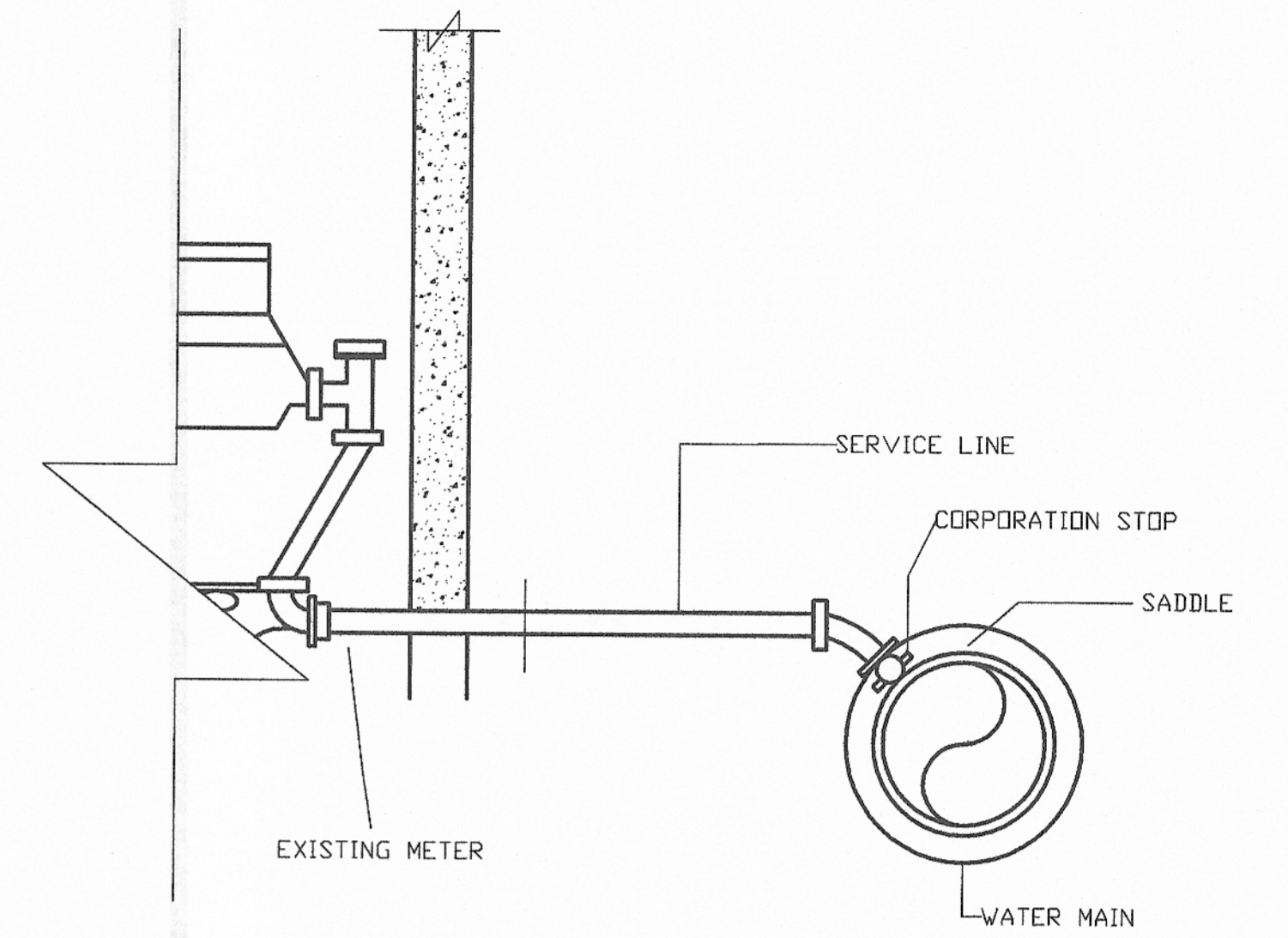
NOTE: WHERE THE WATER LINE IS LOCATED IN A STREET OR ROAD, THE AIR RELEASE VALVE AND BOX ARE TO BE LOCATED OFF THE ROAD AS DIRECTED BY THE ENGINEER AND CONNECTED TO THE MAINLINE BY 3/4-INCH SERVICE PIPE. NOTE: 2 INCH SERVICE PIPE SHALL BE USED FOR ALL SERVICE PIPES. PAY ITEM: 4 REQ'D. TO SUPPORT BOX OFF MAINLINE.

AIR RELEASE VALVE
N.T.S



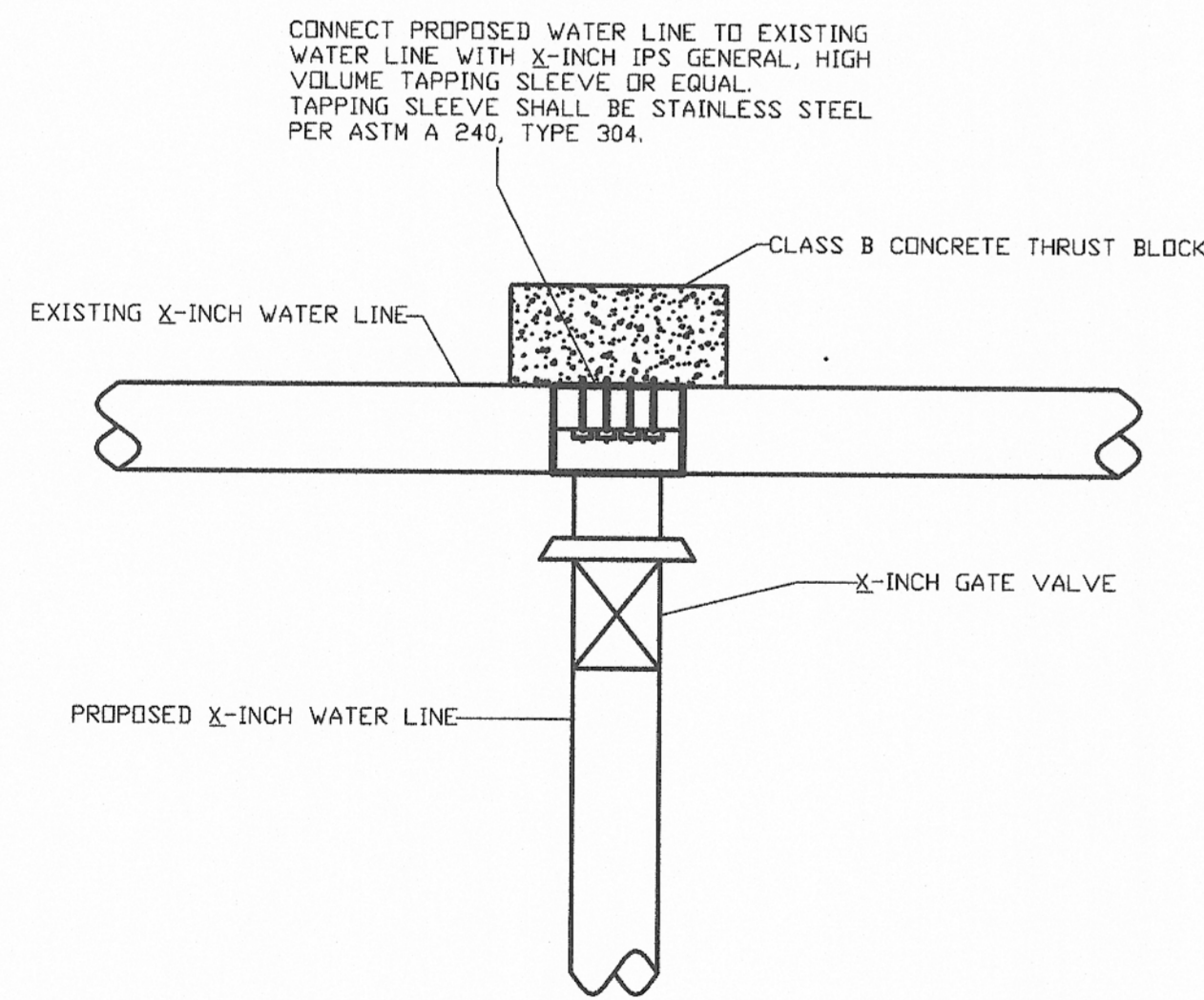
NOTE: METER SETTING SHALL BE PLACED 6" INSIDE PROPERTY LINE UNLESS OTHERWISE DIRECTED BY ENGINEER.

TANDEM METER SETTING AND CONNECTION DETAIL
N.T.S

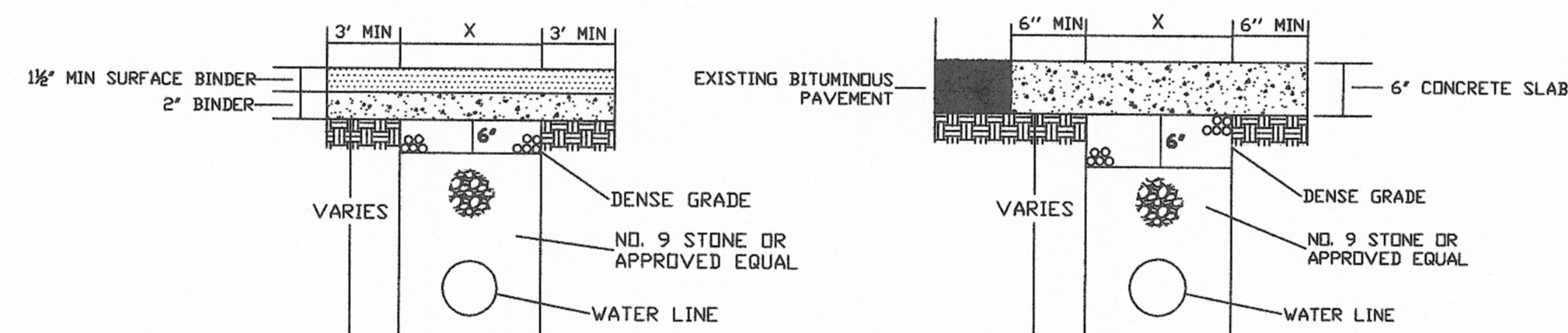


CONNECT NEW SERVICE LINE TO NEW WATER MAIN AND EXTEND TO AND CONNECT TO EXISTING METER.

METER RECONNECTION DETAIL
N.T.S

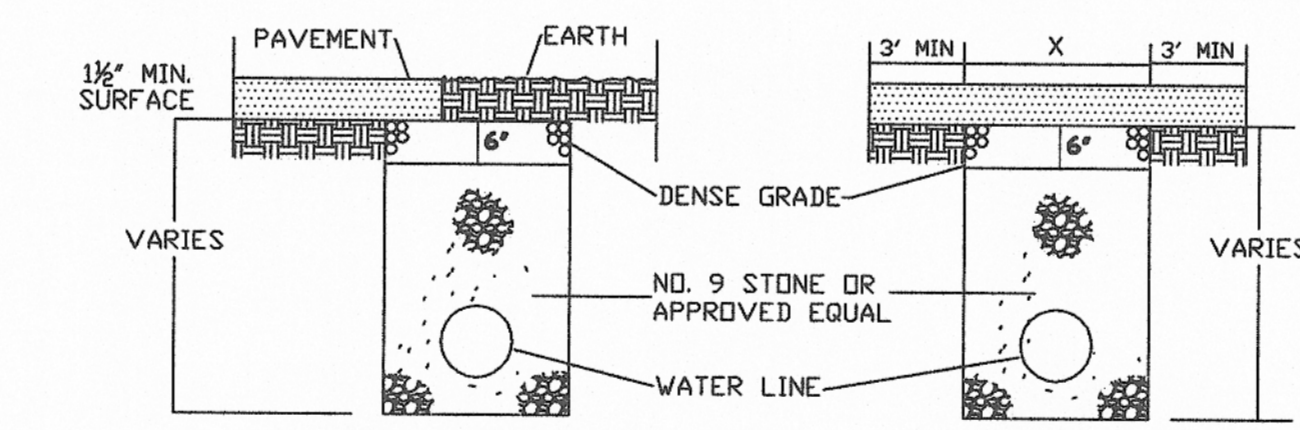


WATER LINE CONNECTION DETAIL
N.T.S



BITUMINOUS SURFACE 2" +

BITUMINOUS SURFACE REPLACED WITH CONCRETE

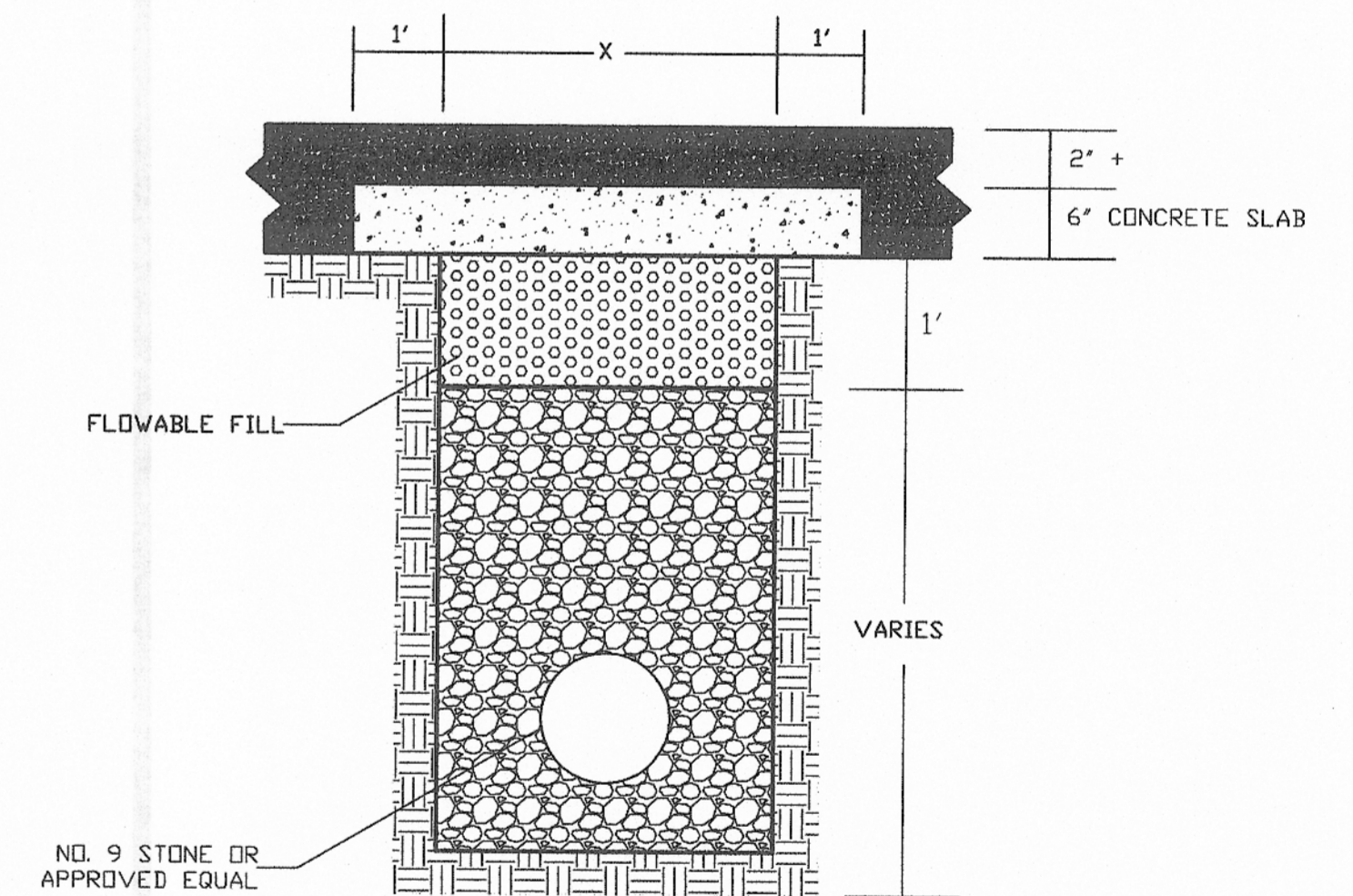


PARTIAL PAVEMENT REPLACEMENT

BITUMINOUS SURFACE LESS THAN 2"

ANY TRENCH THAT DISTURBS PAVEMENT SHALL BE BACKFILLED WITH STONE
REPLACE BITUMINOUS PAVEMENT WITH SAME TYPE AND DEPTH AS EXISTING PAVEMENT
X = WIDTH OF EXCAVATION

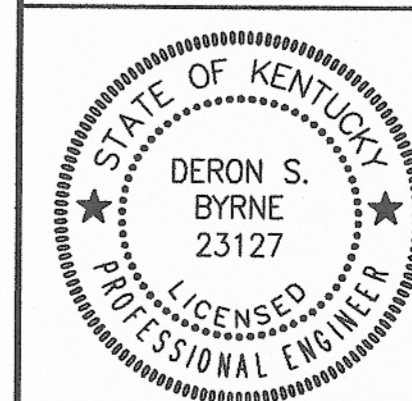
PAVEMENT REPLACEMENT DETAILS
N.T.S



STATE HIGHWAY PAVEMENT REPLACEMENT
N.T.S

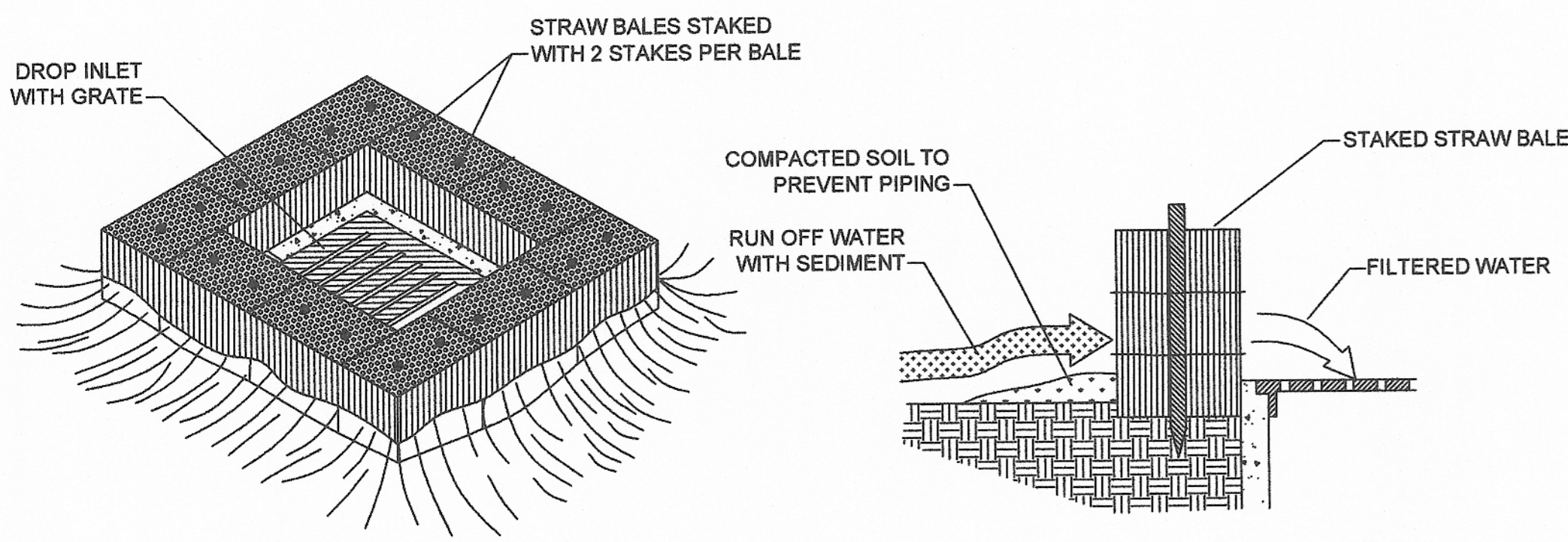
PHASE 11-2 WATER LINE EXTENSIONS
ADAIR COUNTY WATER DISTRICT
ADAIR COUNTY, KENTUCKY

STANDARD DRAWINGS

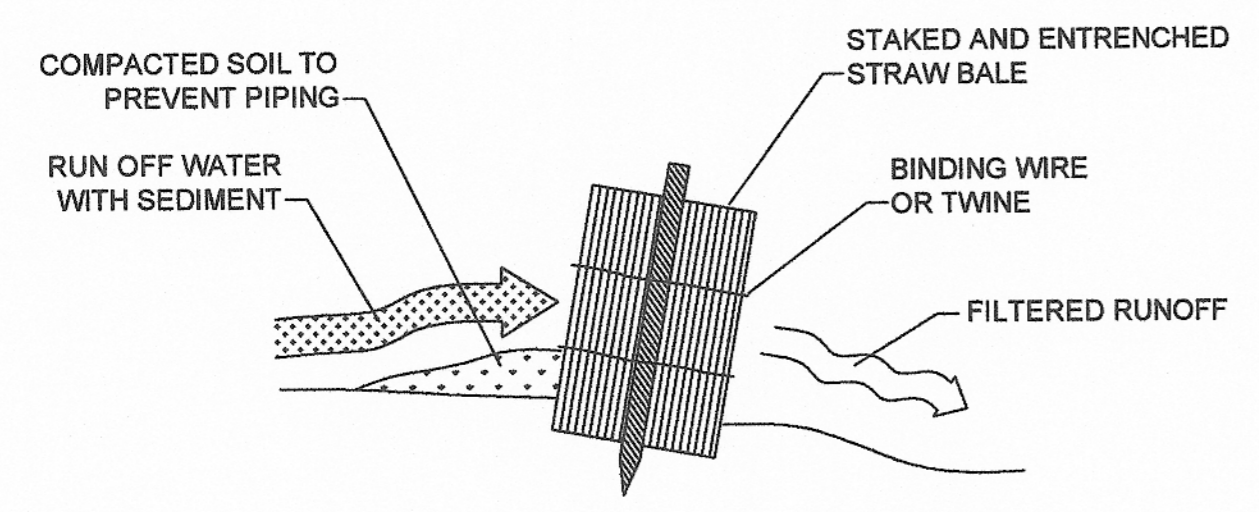


Monarch Engineering, Inc.
556 CARLTON DRIVE
LAWRENCEBURG, KY 40342

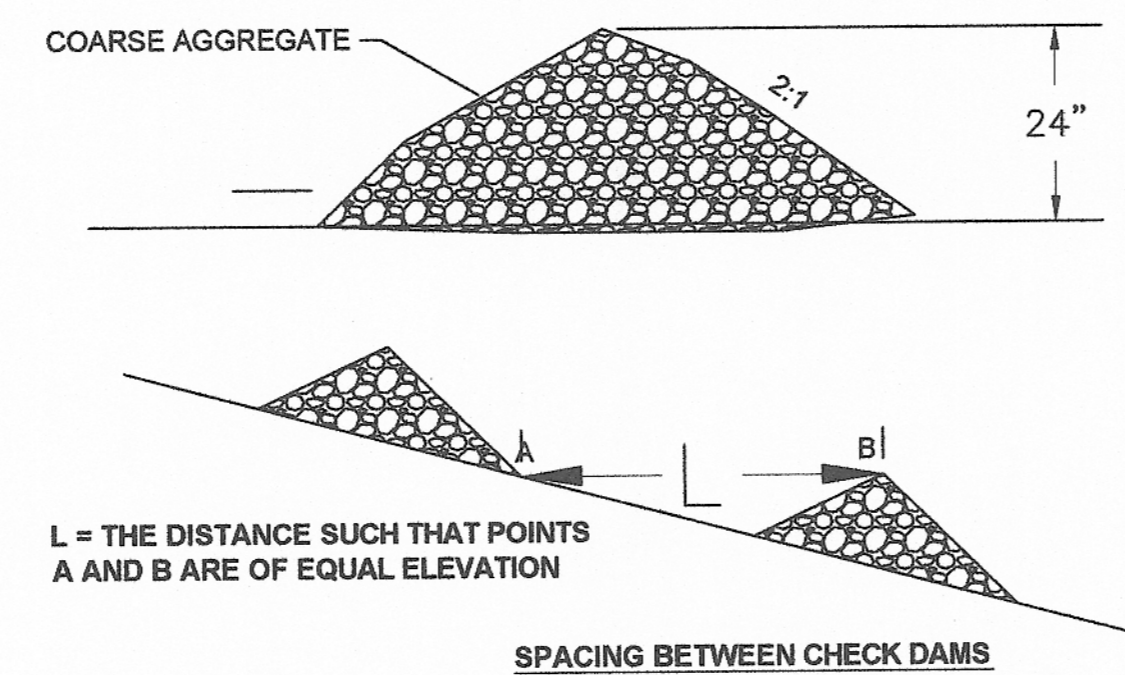
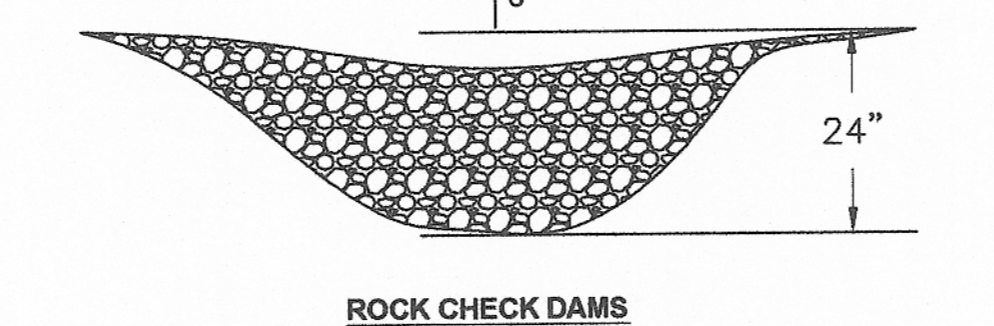
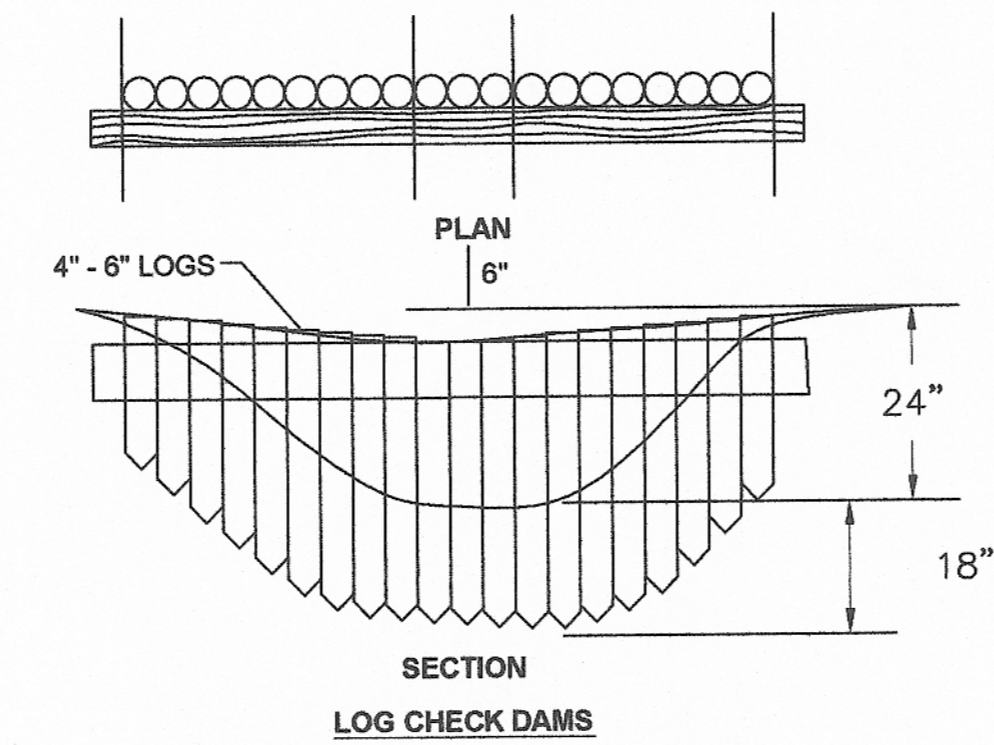
DRAWN BY: JRC	DATE: JAN 2010	REVISED	SHEET
CHECKED BY: DSB	SCALE: AS SHOWN		SD-2
CHECKED BY: DMB	PROJECT: 1049		



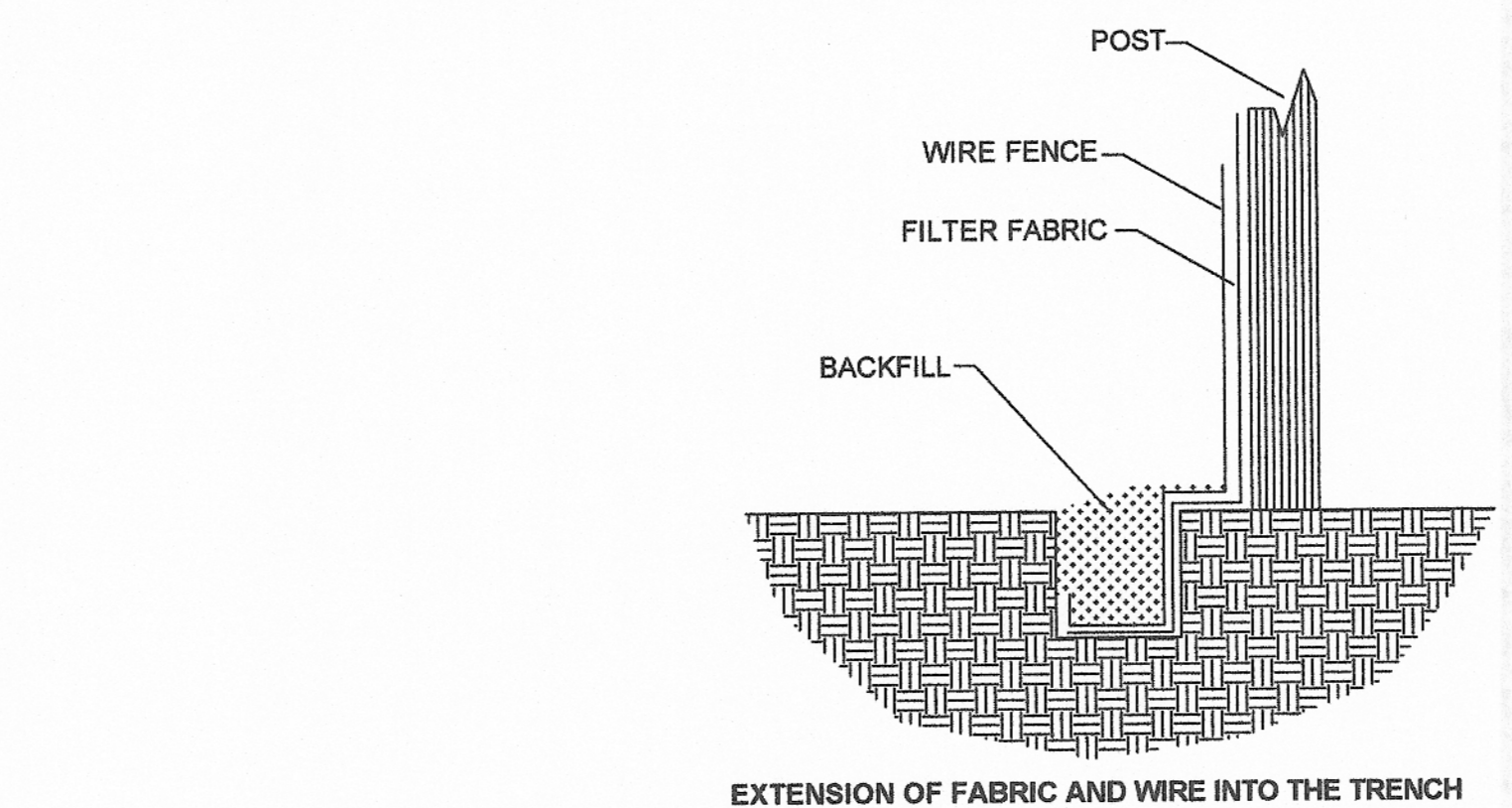
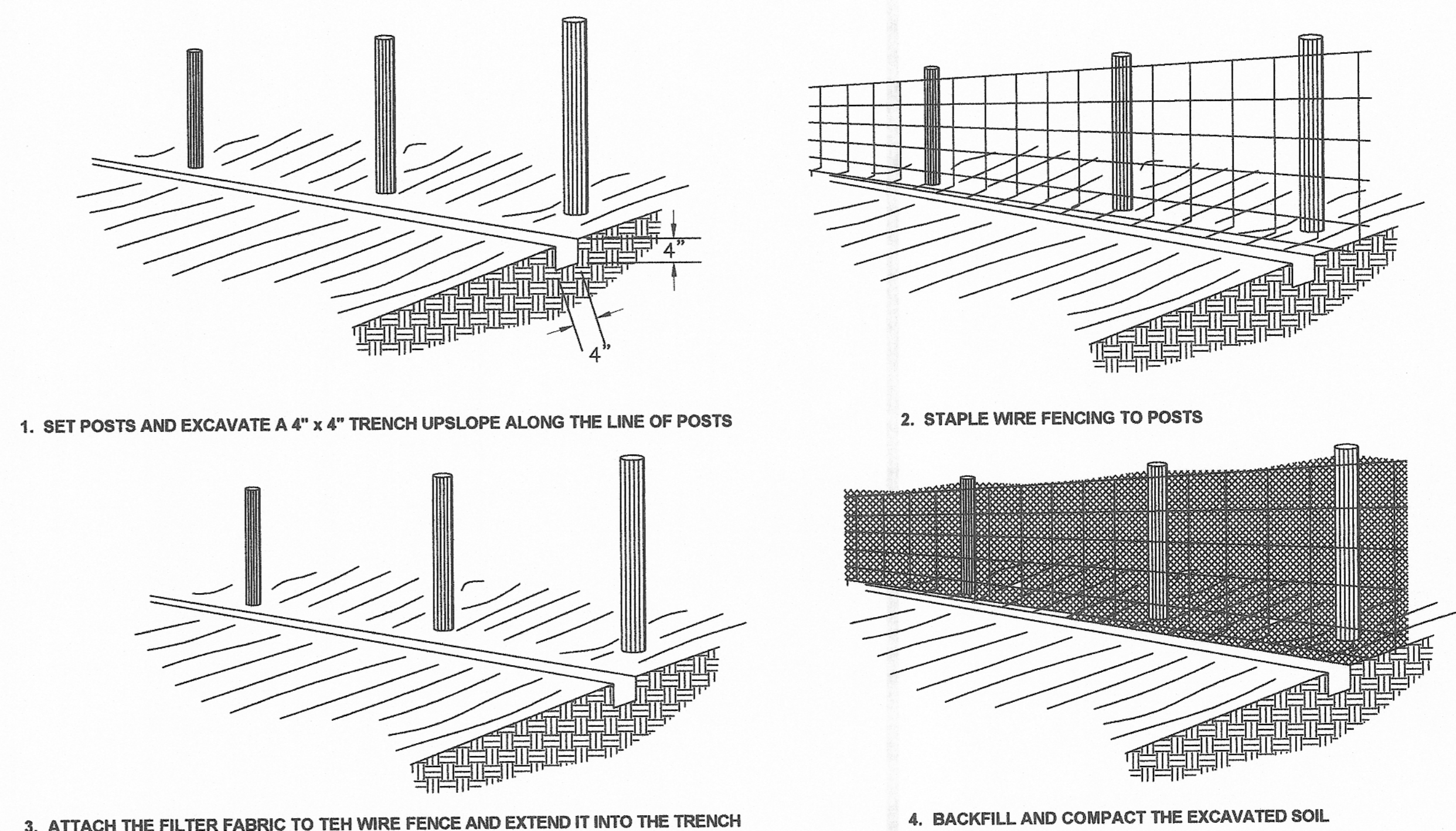
STRAW BALE DROP INLET SEDIMENT FILTER
N.T.S.



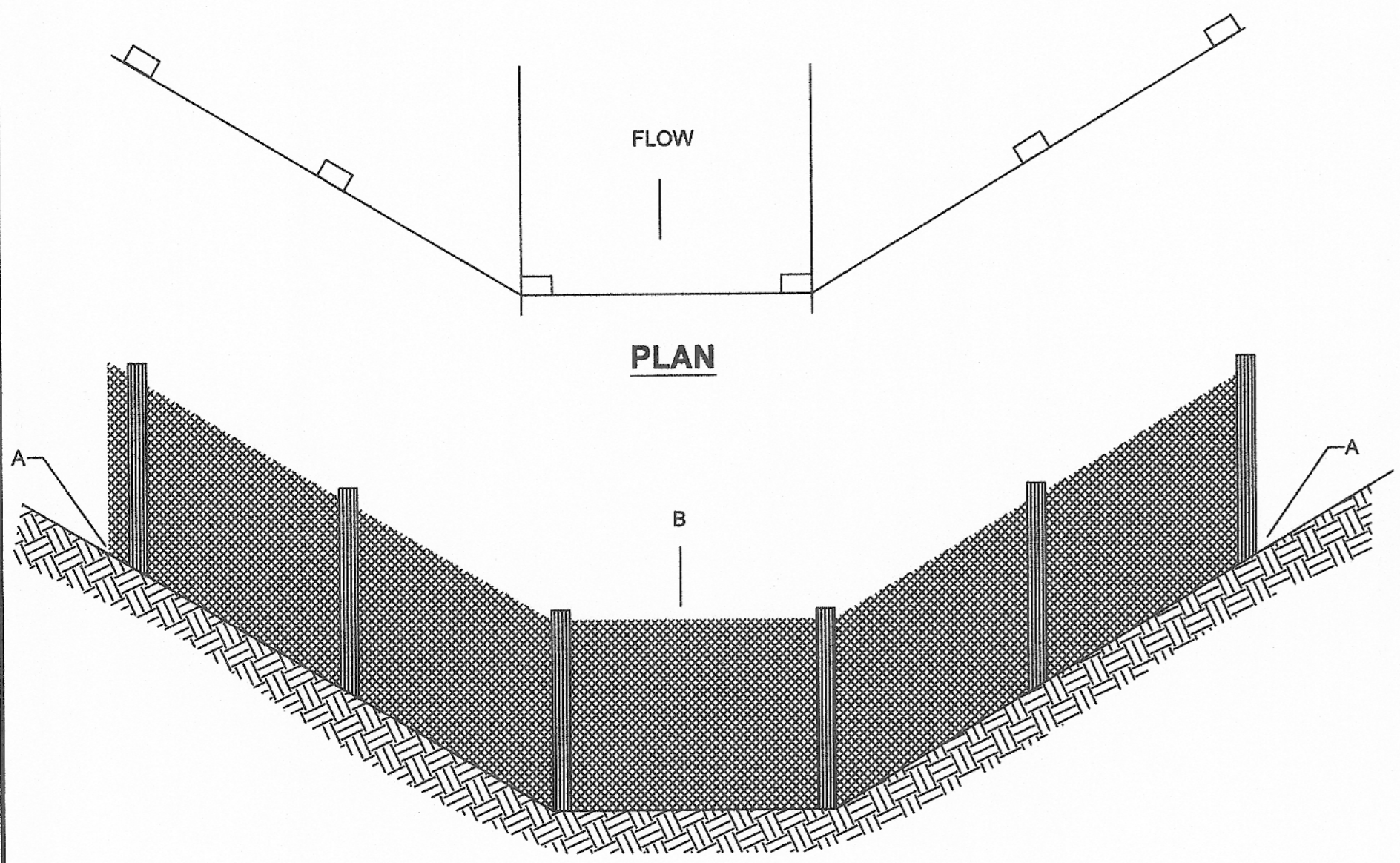
STRAW BALE INSTALLATION PROCEDURES
N.T.S.



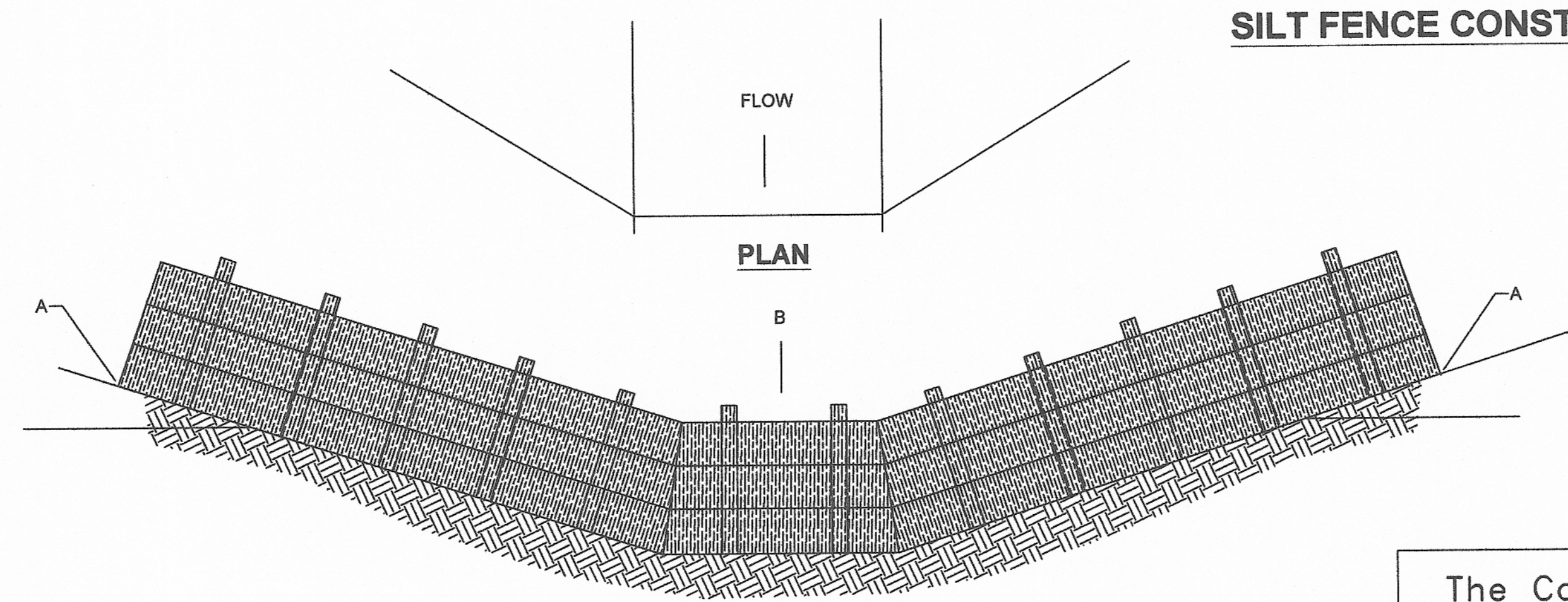
CHECK DAM DETAILS
N.T.S.



SILT FENCE CONSTRUCTION PROCEDURES
N.T.S.



PLACEMENT OF FILTER BARRIER
N.T.S.



PLACEMENT OF STRAW BALE BARRIER
N.T.S.

EROSION CONTROL DETAILS
N.T.S.

The Contractor shall do all work and take all measures necessary to control soil erosion resulting from construction operations, and shall prevent the flow of sediment from the construction site, and shall contain construction materials (including excavation and backfill) within their protected working area so as to prevent damage to the adjacent wetlands and water courses. The Contractor shall use any of the acceptable methods necessary to control soil erosion and prevent the flow of sediment to the maximum extent possible. These methods shall include, but not be limited to, the use of water diversion structures, diversion ditches, and settling basins.

Monarch Engineering, Inc.
556 CARLTON DRIVE
LAWRENCEBURG, KY 40342

DESCRIPTION: **EROSION CONTROL DETAILS**
CUSTOMER: **COLUMBIA/ADAIR UTILITIES DISTRICT
ADAIR COUNTY, KENTUCKY**

PROJECT NO. 1049
DATE: JAN 2010
DRAWN BY: JRC
CHECKED BY: DSB
CHECKED BY: DMB
SCALE: AS NOTED

SHEET: **EC-1**



COLUMBIA/ADAIR UTILITIES DISTRICT PHASE 11-2 WATER LINE EXTENSIONS & CONNECTOR LINES ADAIR COUNTY, KENTUCKY

TABLE OF CONTENTS

COVER	
LOCATION MAP	LM-1
PLAN SHEETS	1 - 16
SHEPHERD BOOSTER PUMP STATION	PS-1 - PS-2
STANDARD DETAILS	SD-1 - SD-2
EROSION CONTROL DETAILS	EC-1

COLUMBIA/ADAIR UTILITIES DISTRICT BOARD MEMBERS:

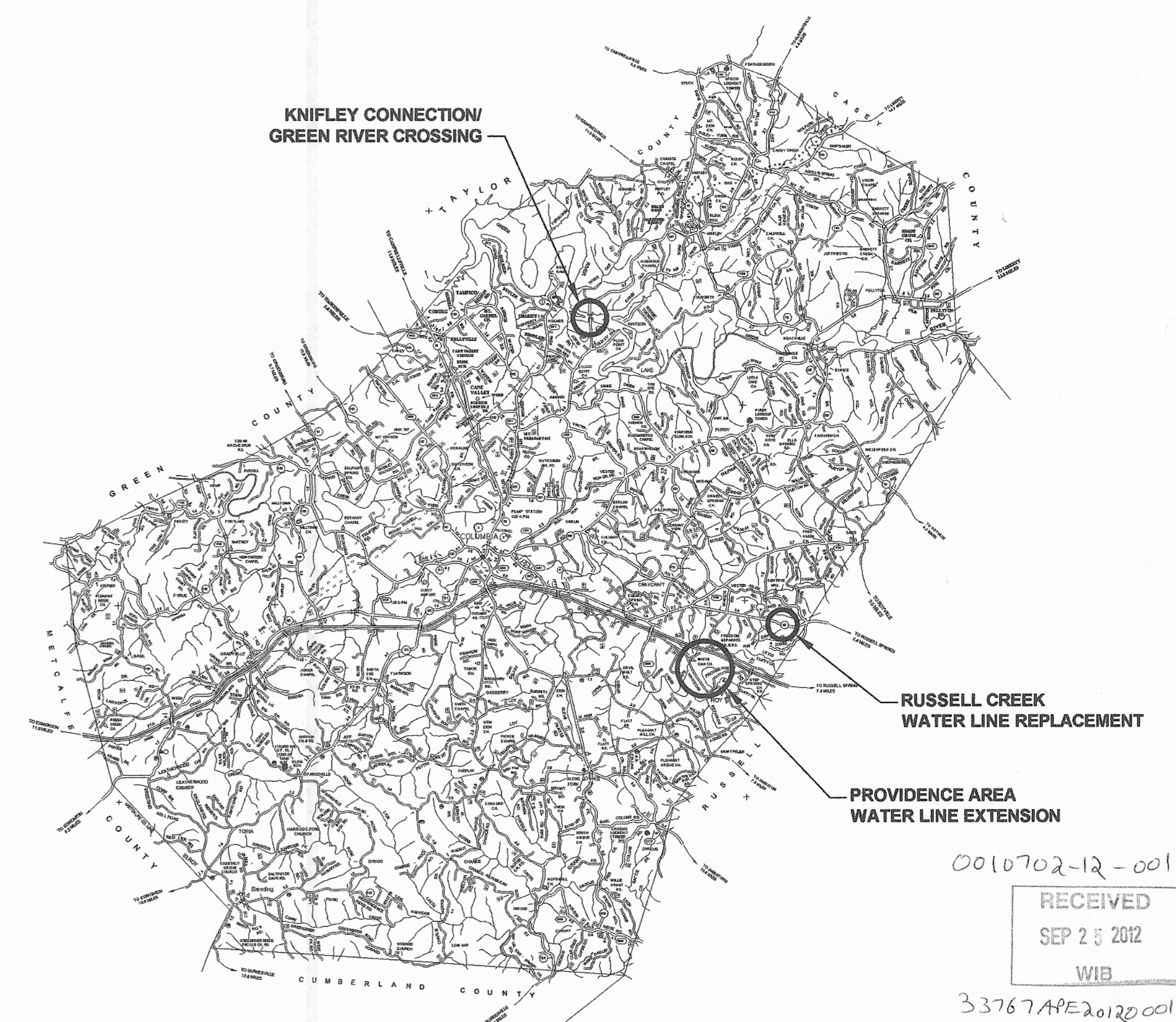
ROBERT FLOWERS, CHAIRMAN
TIM BAKER, VICE CHAIRMAN
RUDY HIGGINBOTHAM, SECRETARY/TREASURER
DAVID JONES
BARRY STOTTS
MANAGER
LENNON STONE
ATTORNEY
MARSHALL LOY

OCTOBER 2011

M
Monarch Engineering, Inc.

556 CARLTON DRIVE
LAWRENCEBURG, KY 40342

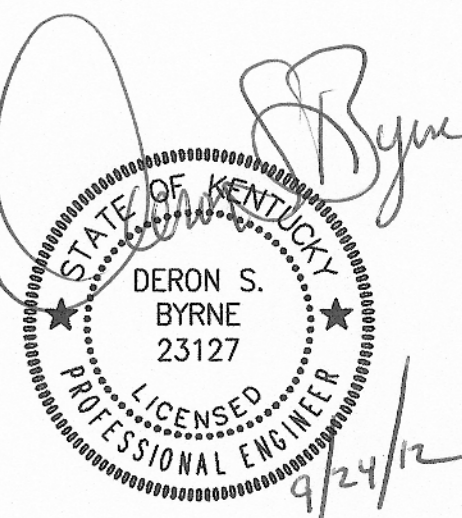
LOCATION MAP



0010702-12-001

RECEIVED
SEP 25 2012
WIB

33767APE2012001





DESCRIPTION:

**COUNTYWIDE WATER SYSTEM
EXTENSIONS & IMPROVEMENTS**

CUSTOMER:

**COLUMBIA/ADAIR UTILITIES DISTRICT
ADAIR COUNTY, KENTUCKY**

PROJECT NO. 1049
DATE: JAN 2010
DRAWN BY: JRC
CHECKED BY: DSB
CHECKED BY: DMB
SCALE: N.T.S.

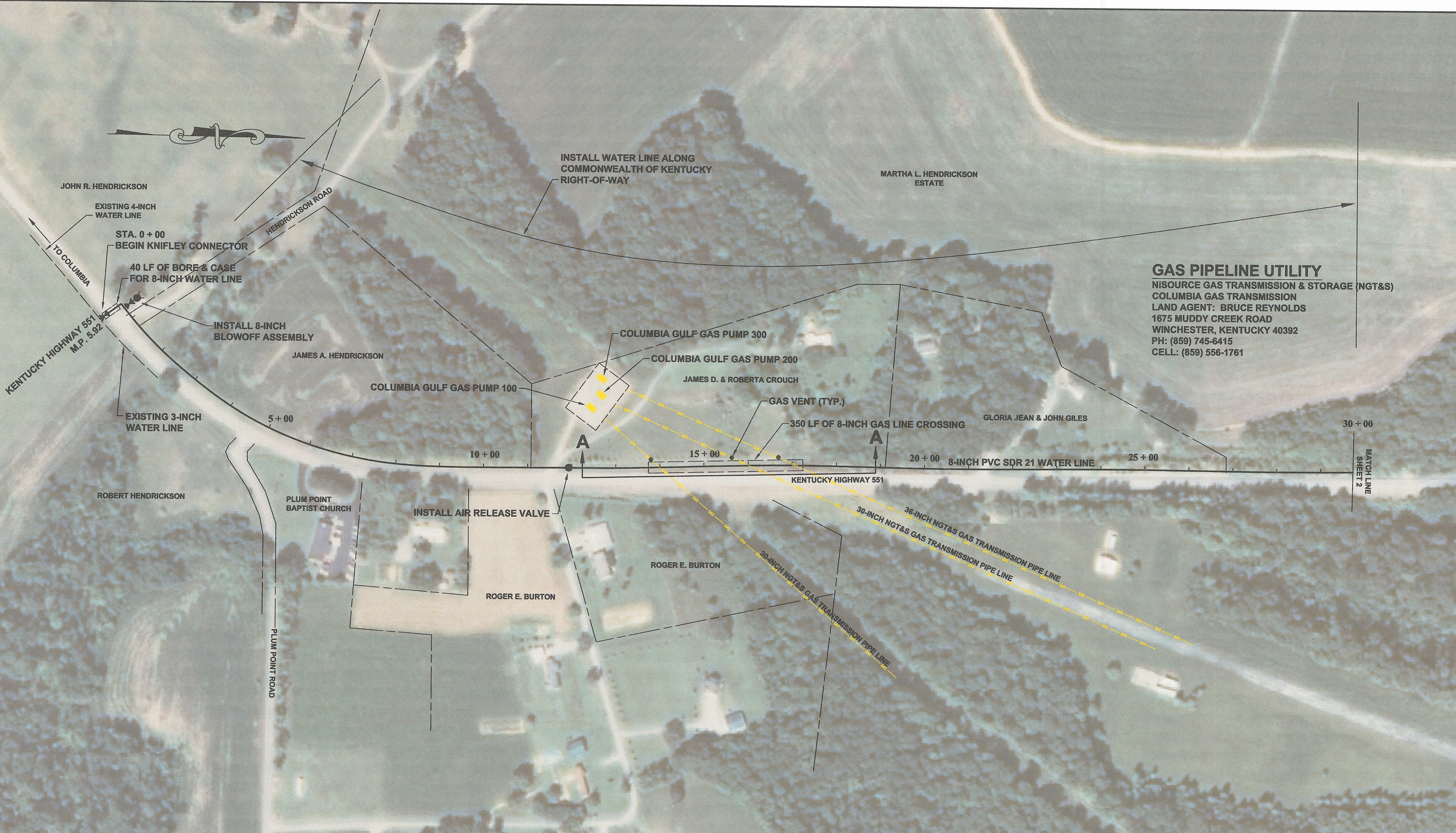
SHEET:

LM-1



Monarch Engineering, Inc.

556 CARLTON DRIVE
LAWRENCEBURG, KY 40342



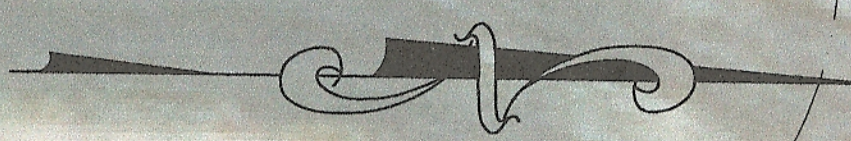
GAS PIPELINE UTILITY
 NISOURCE GAS TRANSMISSION & STORAGE (NGT&S)
 COLUMBIA GAS TRANSMISSION
 LAND AGENT: BRUCE REYNOLDS
 1675 MUDDY CREEK ROAD
 WINCHESTER, KENTUCKY 40392
 PH: (859) 745-6415
 CELL: (859) 556-1761

**WATER SYSTEM EXTENSIONS
 COLUMBIA/ADAIR UTILITIES DISTRICT
 ADAIR COUNTY, KENTUCKY**

KNIFLEY CONNECTION/GREEN RIVER CROSSING

			Monarch Engineering, Inc. 556 CARLTON DRIVE LAWRENCEBURG, KY 40342
	DRAWN BY: JRC	DATE: JAN 2010	REVISED
	CHECKED BY: DSB	SCALE: 1"=100'	PROJECT: 1049

SHEET
1



INSTALL WATER LINE ALONG
COMMONWEALTH OF KENTUCKY
RIGHT-OF-WAY

MARTHA L. HENDRICKSON
ESTATE

KENTUCKY HIGHWAY 551
M.P. 6.68

US ARMY CORP OF ENGINEERS

8-INCH BLOWOFF
ASSEMBLY

61 + 00

MATCH LINE
SHEET 3

55 + 00

60 + 00

8-INCH BLOWOFF
ASSEMBLY

50 + 00

20'-0" LIMIT OF
DISTURBANCE (TYP.)

800

45 + 00

8-INCH GATE VALVE (TYP.)

700

700

30 + 00

MATCH LINE
SHEET 1

35 + 00 8-INCH PVC SDR 21 WATER LINE

40 + 00

KENTUCKY HIGHWAY 551

STEPHEN & JACQUELINE WOODS

STA. 40 + 00
BEGIN 8-INCH BALL & SOCKET
END 8-INCH PVC SDR 21 WATER LINE

US ARMY CORP OF ENGINEERS

**EROSION CONTROL
LEGEND**

SILT FENCE
x ⊗ x x ⊗ x

LIMITS OF DISTURBANCE
- - - - -

STRAW BALE
▨

PROPERTY LINE/BOUNDARY
- - - - -

TOPOGRAPHIC LINES
- - - - -

**WATER SYSTEM EXTENSIONS
COLUMBIA/ADAIR UTILITIES DISTRICT
ADAIR COUNTY, KENTUCKY**

KNIFLEY CONNECTION/GREEN RIVER CROSSING

Monarch Engineering, Inc.
556 CARLTON DRIVE
LAWRENCEBURG, KY 40342

STATE OF KENTUCKY
DERON S. BYRNE
23127
LICENSED PROFESSIONAL ENGINEER

DRAWN BY: JRC	DATE: JAN 2010	REVISED	SHEET
CHECKED BY: DSB	SCALE: 1"=100'		2
CHECKED BY: DMB	PROJECT: 1049		