



PO Box 55  
Irvington, KY 40146  
270-547-2455

May 8, 2013

Jeff Derouen  
Executive Director  
Public Service Commission  
PO Box 615  
Frankfort, KY 40602

RECEIVED

MAY - 9 2013

PUBLIC SERVICE  
COMMISSION

The information attached is in response to case #2013-00038. The enclosed information is 99% complete except for a digital copy of an addition to one subdivision and the Operations and Maintenance manual (Dimp). Therefore, Irvington Gas requested an extension of time to complete till June 1<sup>st</sup> for the remaining data.

Sincerely

A handwritten signature in black ink, appearing to read "Kerry R. Kasey". The signature is fluid and cursive, with a large initial "K" and "R".

Kerry R Kasey  
President

# PSC responses

**Question #1** Please see attached information

**Question #2** Section 13(17) (g) (1) Sample gas at the furthest point from injection point. We do not have an injection point because our propane is odorized prior to delivery into our bulk plants.

Section 13(17) (g) (2) See answer to above question.

Section 13(17) (g) (4) See answer to above question.

**Question #3** According to PHMSA website Training Guide for Operators of Small LP Gas Systems (April 2001 Ed.) chapter 2 page three it states "The LP-Gas Code specifies that LP gas be odorized prior to delivery to the bulk plant. It goes on to require verification by "sniff-testing or other means, and the results shall be documented" when gas is delivered to the bulk plant or in the case where a delivery bypasses the bulk plant. If the documentation required by the LP-Gas Code is not available to the LP gas system operator, then the operator will need to do his own sniff tests to verify odorization and document the results. Please find in the attached documentation copies of the Bill of Lading showing a sniff test on every delivery.

**Question #4** Yes, NFPA 58 4.2.1 states "All LP gases shall be odorized prior to delivery to a bulk plant by the addition of a warning agent of such character that the gases are detectable, by a distinct odor, to a concentration in air of not more than one-fifth the lower limit of flammability". Copies of bills of lading attached.

**Question #5** No

**Question #6** No. We perform a sniff test on propane every time we fill our trucks and make a delivery. We do not record a sniff test on every delivery we make.

**Question #7** See answer to question 6. We do not use different propane for our subdivisions than what is delivered every day to our bulk customers.

**Question #8** We are the only supplier to our systems. Copies of deliveries attached.

**Question #9** Monthly during the heating season and during the off season, once.

**Question #10** Less than 2%

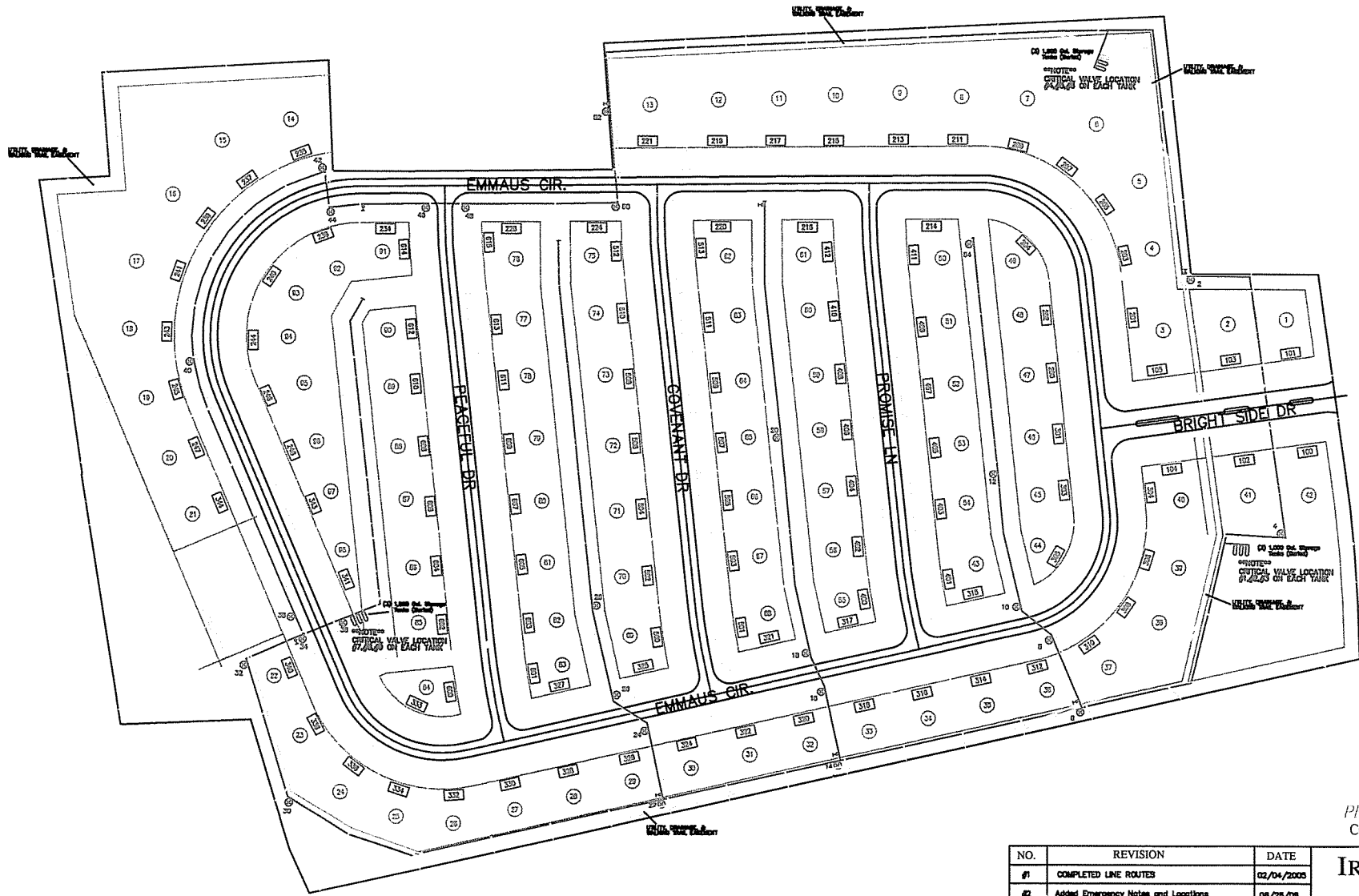
**Question #11** Does the customers have to have propane to heat the home.

**Question #12** No

**Question #13** We are in the process working through PHMSA and SHRIMP to have a Operations and Maintenance Manual.

49 CFR 192.11(c) States In the event of a conflict between this part and ANSI/NFPA 58 and 59, ANSI/NFPA 58 and 59 prevail. We believe 49 CFR 192.625 and NFPA 58 4.2.1 conflict which according to 49 CFR 192.11(c) NFPA must prevail.





**LEGEND**

⊙ 14	PIPE CAUTION MARKER AND NUMBER
—	HIGH PRESSURE LINE
—	UTILITY GAS LINES
—	MSP PLASTIC LINE
—	INSULATING FLANGE
—	VALVE
000	3 PROPAANE GAS STORAGE TANKS (1000 GAL. EACH)

\*\*\*NOTE\*\*\*  
 EACH TANK HAS A CRITICAL VALVE ON IT. THERE ARE 0 CRITICAL VALVES IN THIS SUBD.  
 ALL CRITICAL VALVES MUST BE TURNED "OFF" TO STOP COMPLETE GAS SUPPLY TO THE AREA.



11,127 of Gas Lines  
 PROJECT BRIGHT SIDE SUBD.  
 CONTACT # (270) 547-9554

\*\*\*NOTE\*\*\*  
 ALL OF PROPAANE GAS LINES ARE TO BE BURIED 36" DEEP EXACTLY.  
 ALL BUILDING CODES AND RULES SHOULD BE USED IN CONSTRUCTION.  
 \*\* ONE CALL SYSTEM CONTRACT #7051 \*\*

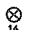





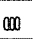
NO.	REVISION	DATE
#1	COMPLETED LINE ROUTES	02/04/2005
#2	Added Emergency Notes and Locations	08/25/08

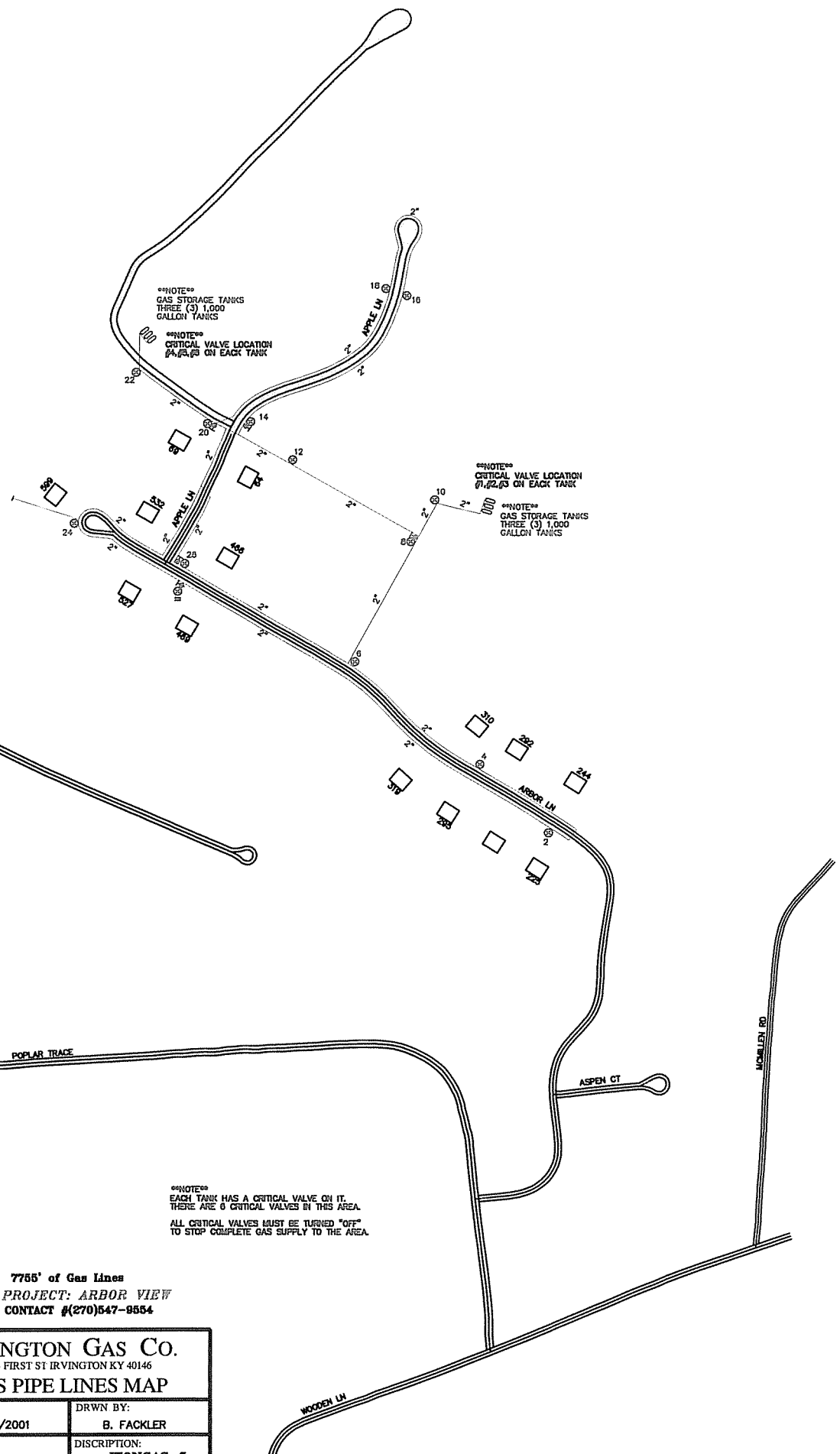
**IRVINGTON GAS CO.**  
 401 S FIRST ST IRVINGTON KY 40146

**BRIGHT-SIDE PROJECT**

DATE: 01/25/2003	DRWN. BY: B. FACKLER
SCALE: NONE	ENG. BY: ITONGAS-4

**LEGEND**

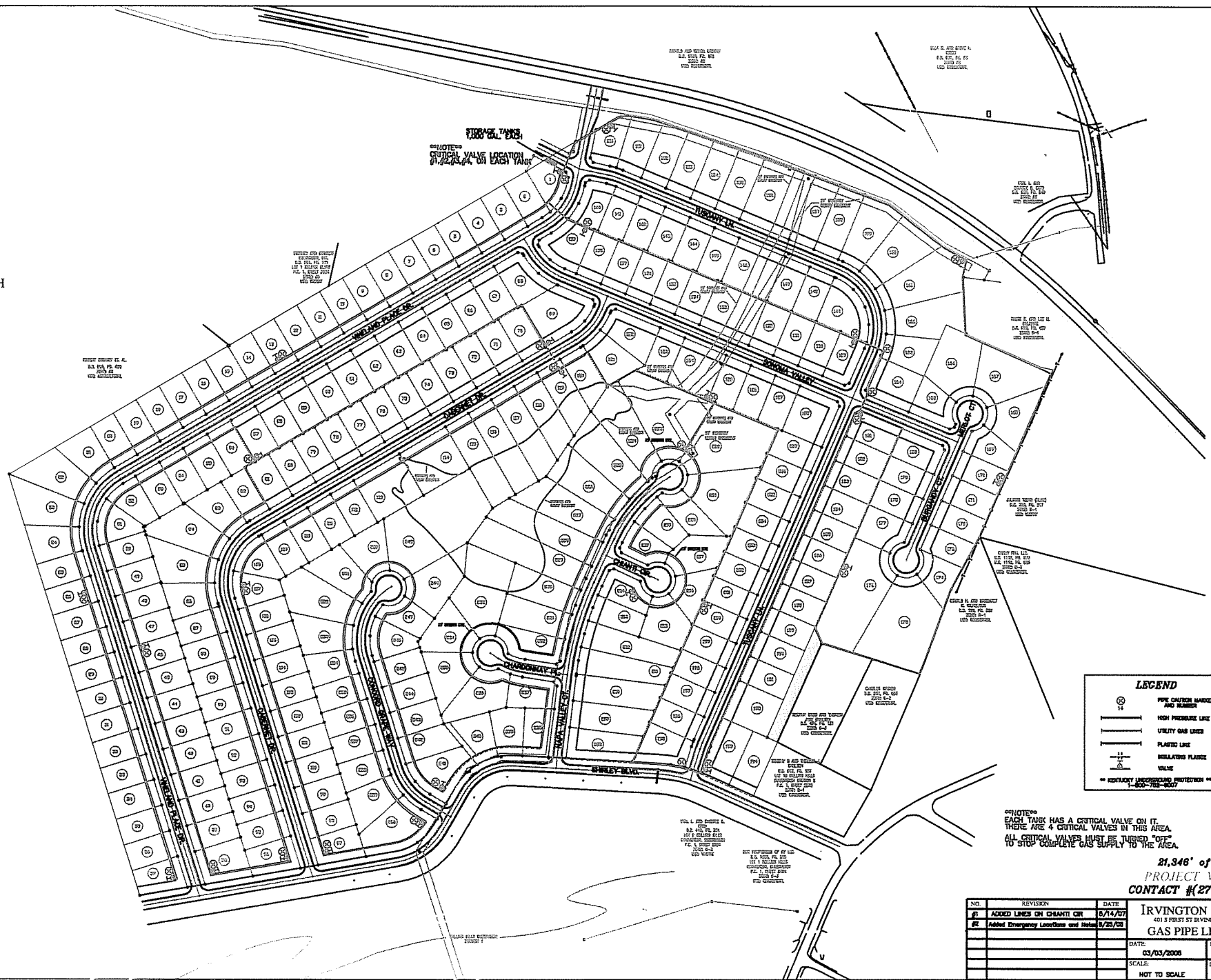
-  PIPE CAUTION MARKER AND NUMBER
-  HIGH PRESSURE LINE
-  UTILITY GAS LINE
-  MRP PLASTIC LINE
-  INSULATING FLANGE
-  VALVE
-  3 GAS STORAGE TANKS  
1000 GAL. EACH



7755' of Gas Lines  
 PROJECT: ARBOR VIEW  
 CONTACT # (270) 547-8554

NOTE: EACH TANK HAS A CRITICAL VALVE ON IT. THERE ARE 6 CRITICAL VALVES IN THIS AREA. ALL CRITICAL VALVES MUST BE TURNED "OFF" TO STOP COMPLETE GAS SUPPLY TO THE AREA.

NO.	REVISION	DATE	IRVINGTON GAS CO.	
#1	Added Emergency Locations and Notes	08/25/08	401 S FIRST ST IRVINGTON KY 40146	
			<b>GAS PIPE LINES MAP</b>	
			DATE: 08/4/2001	DRWN BY: B. FACKLER
			SCALE: NONE	DISCRPTION: ITONGAS-5



**NOTES**  
 CRITICAL VALVE LOCATION  
 TO BE LOCATED ON EACH VALVE

**LEGEND**

	PIPE CRITICAL MARKER AND NUMBER
	HIGH PRESSURE LINE
	UTILITY GAS LINES
	PLASTIC LINE
	ISOLATION PLANCE
	VALVE
	CONTAINMENT PROTECTION "11-500-712-0027"

**NOTES**  
 EACH TANK HAS A CRITICAL VALVE ON IT.  
 THERE ARE 4 CRITICAL VALVES IN THIS AREA.  
 ALL CRITICAL VALVES MUST BE TURNED "OFF"  
 TO STOP COMPLETE GAS SUPPLY TO THE AREA.

**21,346' of Gas Line**  
**PROJECT VINELAND**  
**CONTACT # (270) 547-9554**

NO.	REVISION	DATE
01	ADDED LINES ON CHARDWAY DR	5/14/07
02	Added Emergency LineCare and Meter	5/25/08

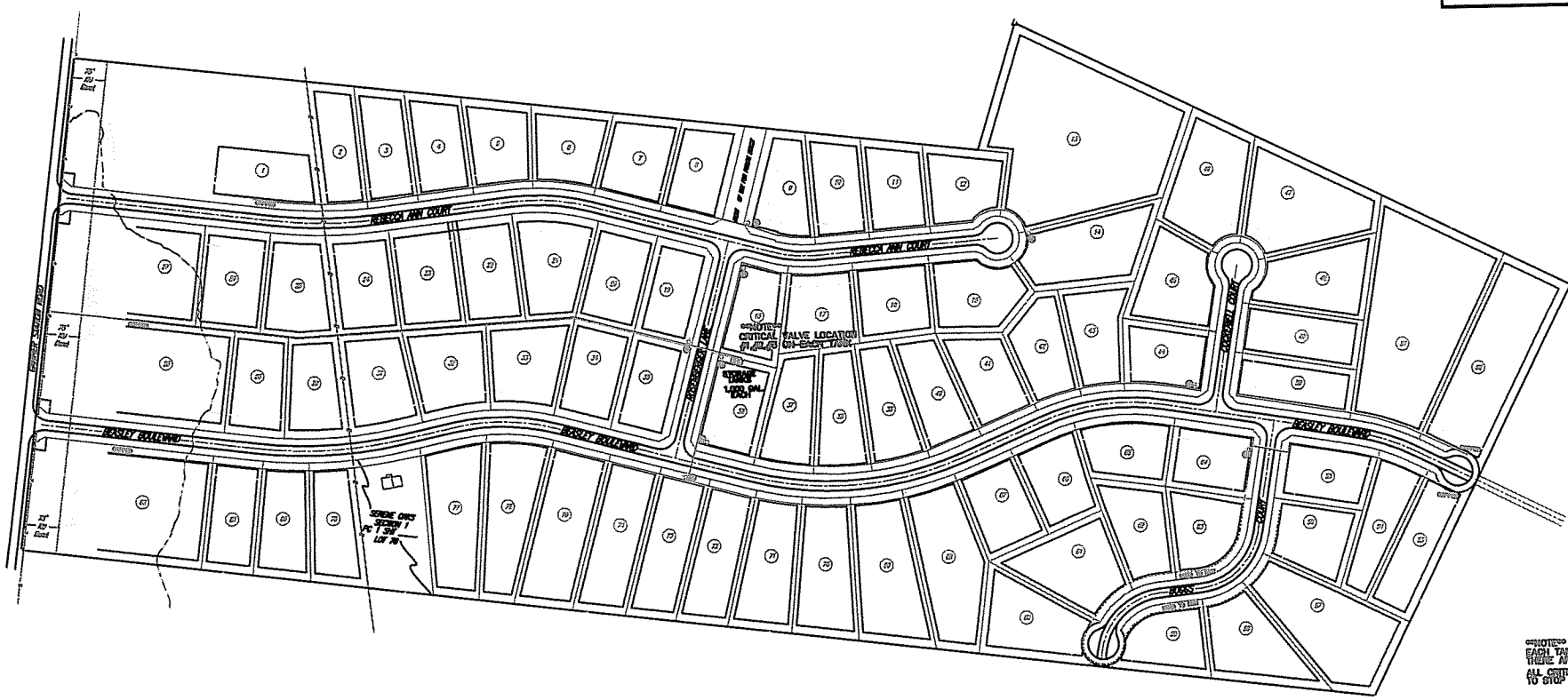
  

DATE:	03/03/2008	DRAWN BY:	B. FADLER
SCALE:	NOT TO SCALE	DWG. NO.	ITONGAS-6

**IRVINGTON GAS CO.**  
 401 S FIRST ST IRVINGTON KY 40346  
**GAS PIPE LINES MAP**

**LEGEND**

- Dr. & USL Limit
- Drainage & Utility Easement
- Easement Line
- Building Line (BL)
- Utility Pole
- Existing Overhead Utility Line
- Approximate Location of 600 Elevation Contour Line



NOTES:  
EACH TANK HAS A CRITICAL VALVE ON IT.  
THERE ARE 3 CRITICAL VALVES IN THIS AREA.  
ALL CRITICAL VALVES MUST BE TURNED OFF  
TO STOP COMPLETE GAS FLOW TO THE AREA.

9304' of Gas Lines  
PROJECT :  
SERENE OAKS SUBD.  
CONTACT # (270)647-9554

**LEGEND**

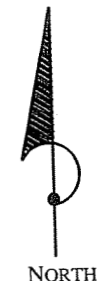
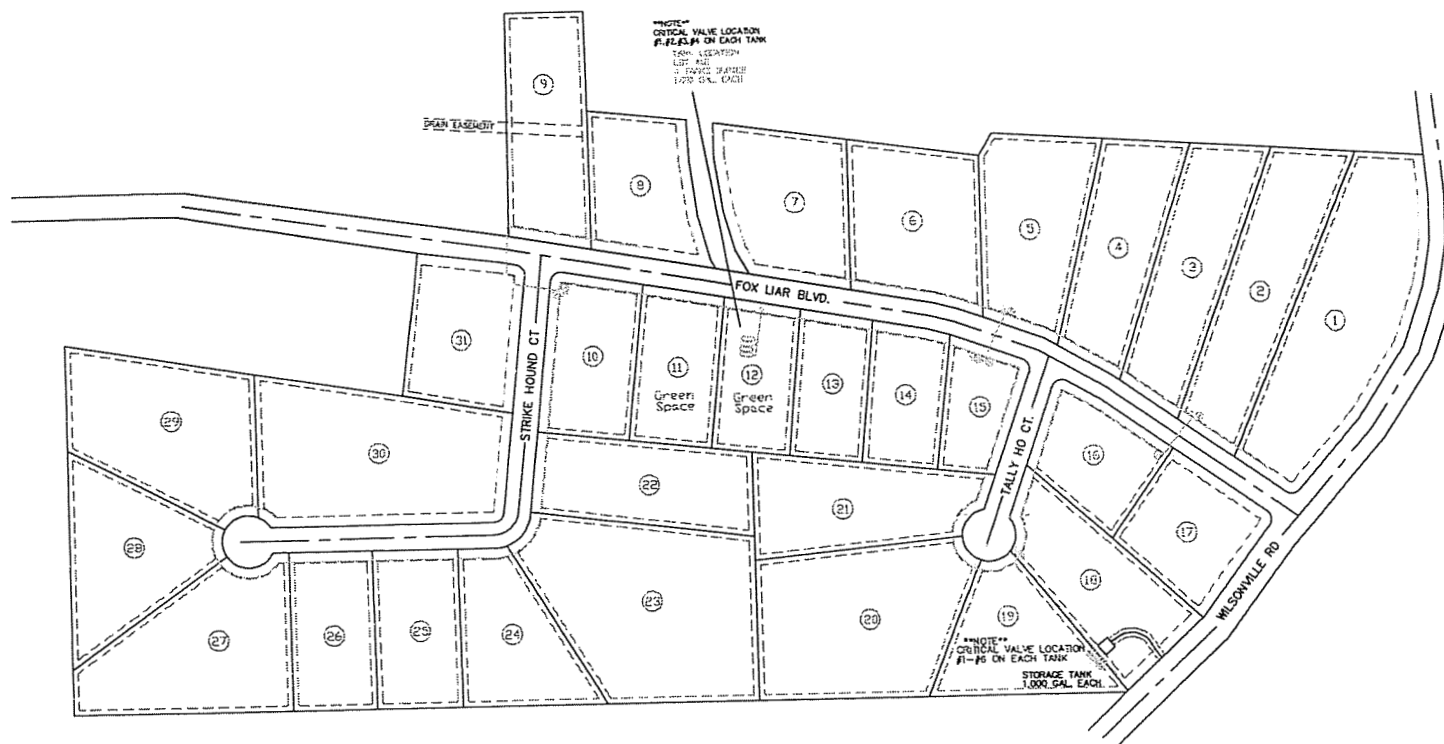
- ⊙ 14 PIPE CAUTION MARKER AND NUMBER
- HIGH PRESSURE LINE
- UTILITY GAS LINES
- MHP PLASTIC LINE
- INSULATING FLANGE
- VALVE
- ⊙ STORAGE TANKS

CONTACT #647-9554

\*GENERAL NOTES\*  
BURIED GAS LINES ARE 18'  
FROM EDGE OF ROADWAY

NO.	REVISION	DATE		
#1	Added Emergency Notes	8/25/05	IRVINGTON GAS CO. 401 S FIRST ST IRVINGTON KY 40146 GAS PIPE LINES MAP	
			DATE: 11/05/2008	DRWN. BY: EL FACKLER
			SCALE: APPROX. 1"=120'	DWG. NO. ITONGAS-7





\*\*NOTE\*\*  
EACH TANK HAS A CRITICAL VALVE ON IT.  
THERE ARE 6 CRITICAL VALVES IN THIS AREA.  
ALL CRITICAL VALVES MUST BE TURNED "OFF"  
TO STOP COMPLETE GAS SUPPLY TO THE AREA.

**LEGEND**

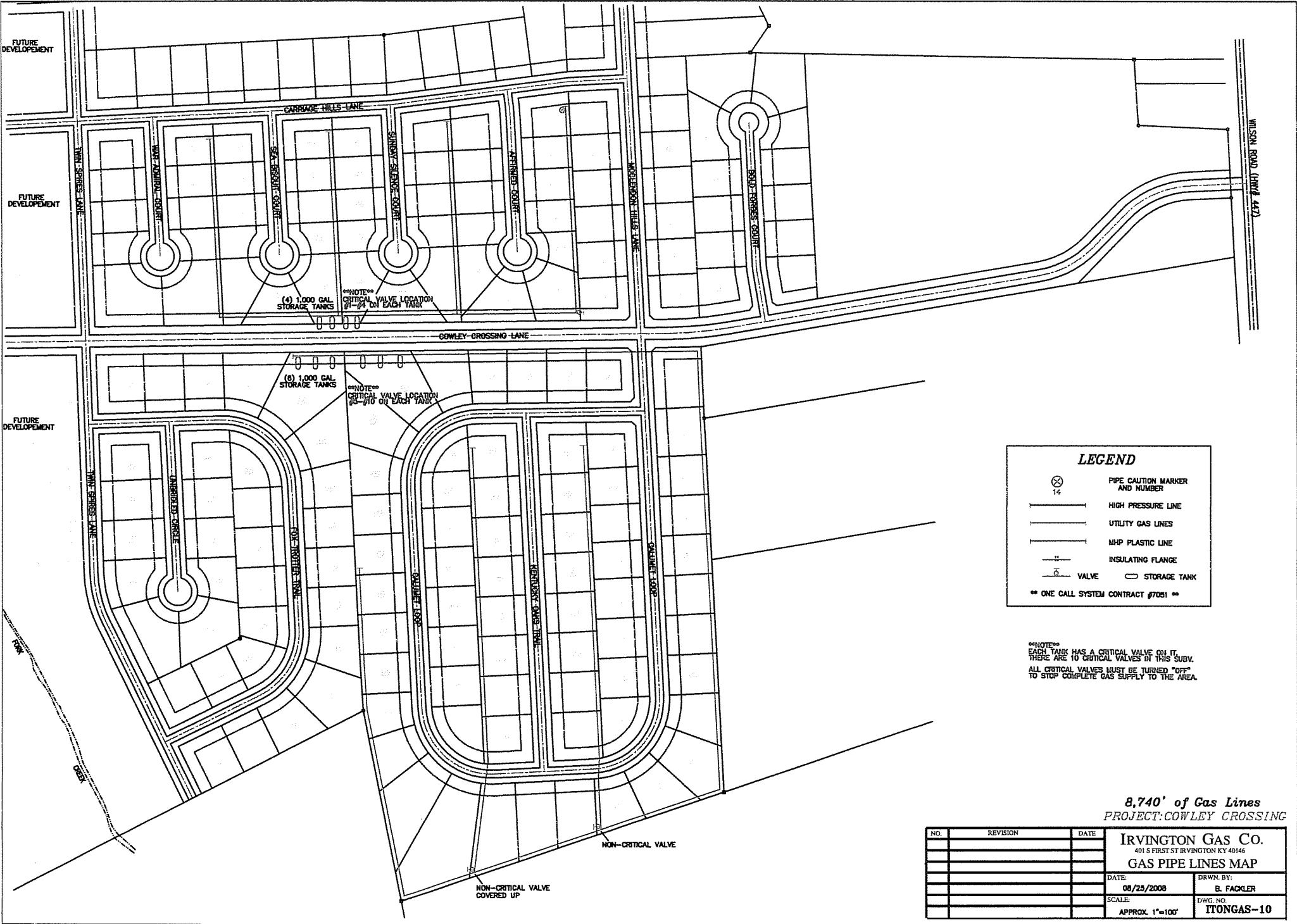
- PIPE CAUTION MARKER AND NUMBER
- HIGH PRESSURE LINE
- UTILITY GAS LINES
- MHP PLASTIC LINE
- INSULATING FLANGE
- VALVE
- STORAGE TANK

\*\*CONTACT #547-9554\*\*

5169' of Gas Line  
PROJECT: FOX LAIR  
CONTACT # (270) 547-9554

NO.	REVISION	DATE	DATE	DRWN. BY:
#1	Added Emergency Locations & Notes	06/25/06		BL FACKLER
#2	Updated Tank Field and Notes	05/07/12		
			DATE:	
			11/22/2006	
			SCALE:	DWG. NO.
			APPROX. 1"=100'	ITONGAS-8

IRVINGTON GAS CO.  
401 S FIRST ST IRVINGTON KY 40346  
GAS PIPE LINES MAP



(4) 1,000 GAL STORAGE TANKS  
 \*\*NOTE\*\* CRITICAL VALVE LOCATION 21" - 24" ON EACH TANK

(6) 1,000 GAL STORAGE TANKS  
 \*\*NOTE\*\* CRITICAL VALVE LOCATION 23" - 24" ON EACH TANK

**LEGEND**

- PIPE CAUTION MARKER AND NUMBER
- HIGH PRESSURE LINE
- UTILITY GAS LINES
- MHP PLASTIC LINE
- INSULATING FLANGE
- VALVE
- STORAGE TANK

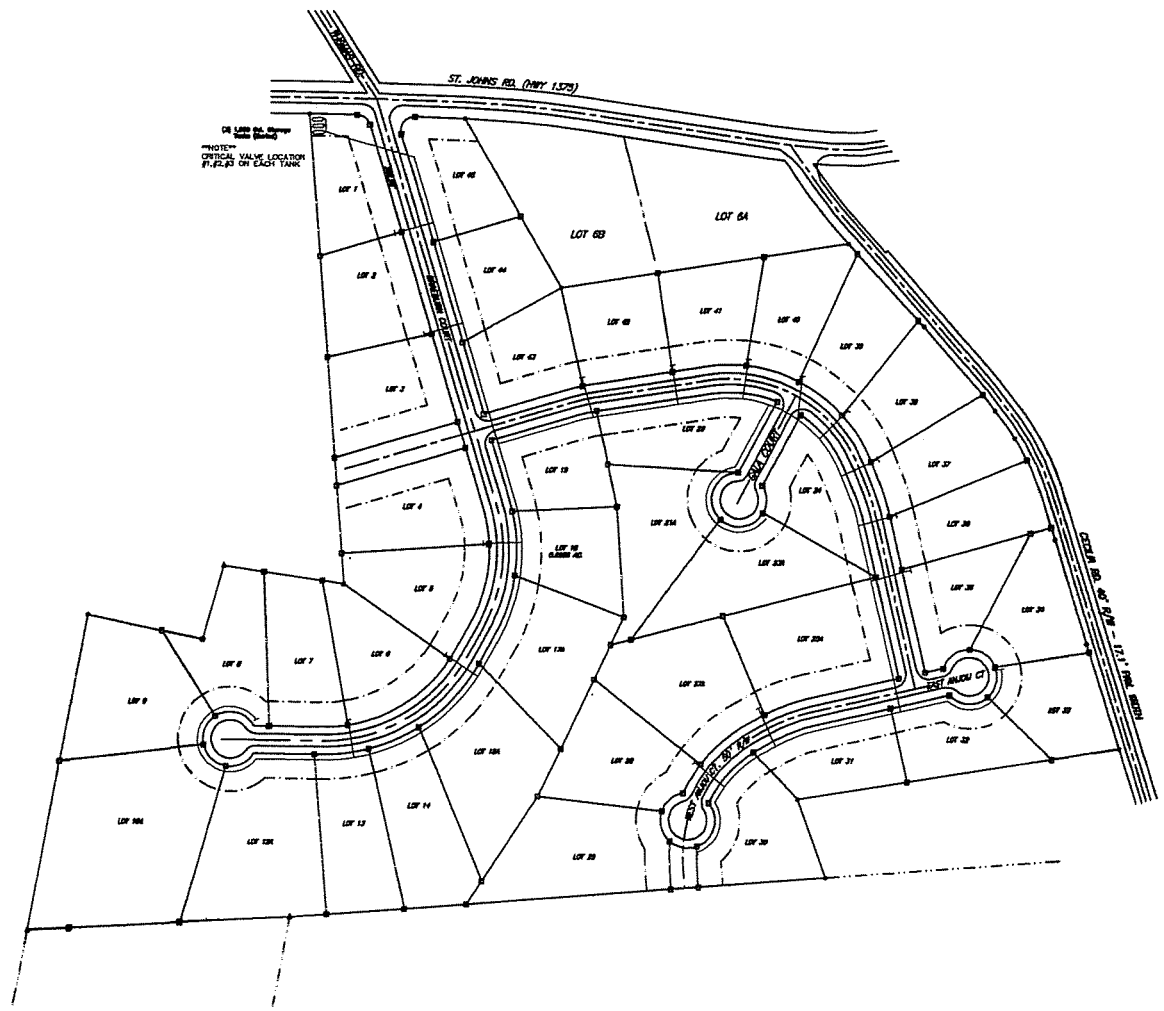
\*\* ONE CALL SYSTEM CONTRACT #77051 \*\*

\*\*NOTE\*\* EACH TANK HAS A CRITICAL VALVE ON IT. THERE ARE NO CRITICAL VALVES IN THIS SUBV. ALL CRITICAL VALVES MUST BE TURNED "OFF" TO STOP COMPLETE GAS SUPPLY TO THE AREA.

8,740' of Gas Lines  
 PROJECT: COWLEY CROSSING

NO.	REVISION	DATE

<b>IRVINGTON GAS CO.</b>	
401 S FIRST ST IRVINGTON KY 40146	
<b>GAS PIPE LINES MAP</b>	
DATE:	DRWN. BY:
08/25/2008	B. FACKLER
SCALE:	DWG. NO.
APPROX. 1"=100'	ITONGAS-10

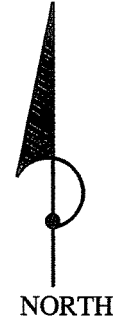


OR SEE THE...  
 \*\*\*NOTE\*\*\*  
 CRITICAL VALVE LOCATION  
 PLACES ON EACH TANK

**LEGEND**

- P1 PIPE CAUTION MARKER AND NUMBER
- HIGH PRESSURE LINE
- UTILITY GAS LINES
- PLASTIC LINE
- INSULATING FLANGE
- X VALVE

\*\*\* KENTUCKY UNDERGROUND PROTECTION \*\*\*  
 1-800-732-3007  
 \*\* TICKET #002304016 \*\*



\*\*\*NOTE\*\*\*  
 EACH TANK HAS A CRITICAL VALVE ON IT.  
 THERE ARE 3 CRITICAL VALVES IN THIS AREA.  
 ALL CRITICAL VALVES MUST BE TURNED "OFF"  
 TO STOP COMPLETE GAS SUPPLY TO THE AREA.

\*\*\*' of Gas Lines  
 \*\*\*' Service Lines  
**PROJECT: THE ORCHARD**  
 CONTACT # (270) 647-9554

NO.	REVISION	DATE

<b>IRVINGTON GAS CO.</b> 401 S FIRST ST. INVINGTON KY 40146	
<b>GAS PIPE LINES MAP</b>	
DATE: 05/02/2013	DRWN. BY: B. FACLER
SCALE: APPROX. 1"=100'	DWG. NO. ITONGAS-12

# ENERGY SERVICES, LLC

## SEYMOUR TERMINAL

10523 E. Co. Rd. 975 N. • Seymour, IN 47274

(812) 445-3404

TRUCK MANIFEST #: 10022588

STRAIGHT BILL OF LADING	EMERGENCY RESPONSE
-------------------------	--------------------

**CUSTOMER:**

**ENERGY - Wholesale**  
10523 East County Road 975 North  
Seymour, IN 47274  
812-445-3404

**FOR CHEMICAL EMERGENCY**  
SPILL, LEAK, FIRE, EXPOSURE, OR ACCIDENT  
Call PERS - 24 Hours  
(800) 633-8253

**SUPPLIER: ENERGY SERVICES LLC**

**DESTINATION:**

**I.B.G. - Elizabethtown Ky.**  
**Elizabethtown, KY 00000**

**CONSIGNEE:**

**I.B.G. - Elizabethtown Ky.**  
**Elizabethtown, KY 00000**

<b>PRODUCT DESCRIPTION &amp; CLASS</b>	<b>DATE:</b> 11/30/2012	<b>TIME IN:</b> 2:26:12PM	<b>TIME OUT:</b> 2:44:49PM
--	-------------------------	---------------------------	----------------------------

**1 CARGO TANK**

<b>GRAVITY</b>	<b>FACTOR</b>	<b>NET GALLONS @60F</b>
0.503	4.19	9,212

**LIQUEFIED PETROLEUM GAS**  
**2.1 UN 1075**  
**NON CORROSIVE**

ORDER #

<b>WATER CAPACITY</b> 10,500	<b>% FILLED</b> 88%	<b>GROSS WT.</b> 79,820	<b>TARE WT.</b> 41,220	<b>NET WT.</b> 38,600
---------------------------------	------------------------	----------------------------	---------------------------	--------------------------

The product loaded hereon has been odorized in the amount of 1.38 pounds of ethyl mercaptan.

"This is to certify that the above named materials are properly classified, described, packaged, marked and labeled, and are in proper condition for transportation, according to the applicable regulations of the Department of Transportation"

SNIFF TEST PERFORMED

ORDER CHECKED BY: **John Wetzel**

RECEIVED FOR DELIVERY BY: *Knox Napier*

CARRIER: **T&T Trans. LLC**

DRIVER NAME: **Knox Napier**

TRAILER NO: **1624**

CUSTOMER COPY

# ENERGY SERVICES, LLC

## SEYMOUR TERMINAL

10523 E. Co. Rd. 975 N. • Seymour, IN 47274

(812) 445-3404

TRUCK MANIFEST #: 10022581

### STRAIGHT BILL OF LADING

### EMERGENCY RESPONSE

CUSTOMER:

ENERGY - Wholesale  
10523 East County Road 975 North  
Seymour, IN 47274  
812-445-3404

FOR CHEMICAL EMERGENCY  
SPILL, LEAK, FIRE, EXPOSURE, OR ACCIDENT  
Call PERS - 24 Hours  
(800) 633-8253

SUPPLIER: ENERGY SERVICES LLC

DESTINATION:

I.B.G.- Irvington Ky.

Irvington, KY 00000

CONSIGNEE:

I.B.G.- Irvington Ky.

Irvington, KY 00000

PRODUCT DESCRIPTION & CLASS

DATE: 11/30/2012

TIME IN: 10:18:30AM

TIME OUT: 10:32:37AM

GRAVITY

FACTOR

NET GALLONS @60F

0.503

4.19

9,174

1 CARGO TANK

LIQUEFIED PETROLEUM GAS

2.1 UN 1075

NON CORROSIVE

ORDER #

WATER CAPACITY  
10,601

% FILLED  
87%

GROSS WT.  
79,660

TARE WT.  
41,220

NET WT.  
38,440

The product loaded hereon has been odorized in the amount of 1.37 pounds of ethyl mercaptan.

"This is to certify that the above named materials are properly classified, described, packaged, marked and labeled, and are in proper condition for transportation, according to the applicable regulations of the Department of Transportation"

SNIFF TEST PERFORMED

ORDER CHECKED BY: John Wetzel

RECEIVED FOR DELIVERY BY: *Paul Stei*

CARRIER: Wischmeier Trucking Inc.

DRIVER NAME: William J Tice JR

TRAILER NO: 042

CUSTOMER COPY

# ENERGY SERVICES, LLC

## SEYMOUR TERMINAL

10523 E. Co. Rd. 975 N. • Seymour, IN 47274

(812) 445-3404

TRUCK MANIFEST #: 10022574

<b>STRAIGHT BILL OF LADING</b>	<b>EMERGENCY RESPONSE</b>
--------------------------------	---------------------------

CUSTOMER:

**ENERGY - Wholesale**  
10523 East County Road 975 North  
Seymour, IN 47274  
812-445-3404

FOR CHEMICAL EMERGENCY  
SPILL, LEAK, FIRE, EXPOSURE, OR ACCIDENT  
Call PERS - 24 Hours  
(800) 633-8253

SUPPLIER: **ENERGY SERVICES LLC**

DESTINATION:

**L.B.G. - Constantine Ky.**

Constantine, KY 00000

CONSIGNEE:

**L.B.G. - Constantine Ky.**

Constantine, KY 00000

PRODUCT DESCRIPTION & CLASS	DATE: 11/30/2012	TIME IN: 3:54:25AM	TIME OUT: 4:07:39AM
-----------------------------	------------------	--------------------	---------------------

	GRAVITY	FACTOR	NET GALLONS @60F
1 CARGO TANK	0.503	4.19	9,270

**LIQUEFIED PETROLEUM GAS**  
2.1 UN 1075  
NON CORROSIVE

ORDER #

WATER CAPACITY 11,600	% FILLED 80%	GROSS WT. 79,880	TARE WT. 41,040	NET WT. 38,840
--------------------------	-----------------	---------------------	--------------------	-------------------

The product loaded hereon has been odorized in the amount of 1.39 <sup>WST</sup> pounds of ethyl mercaptan.

"This is to certify that the above named materials are properly classified, described, packaged, marked and labeled, and are in proper condition for transportation, according to the applicable regulations of the Department of Transportation"

SNIFF TEST PERFORMED

ORDER CHECKED BY: **John Wetzel**

RECEIVED FOR DELIVERY BY: *William E. Taylor*

CARRIER: <b>T&amp;L Trans. LLC</b>	DRIVER NAME: <b>William Taylor</b>	TRAILER NO.: <b>1605</b>
---------------------------------------	---------------------------------------	-----------------------------

CUSTOMER COPY

**ENERGY SERVICES, LLC**  
**SEYMOUR TERMINAL**  
 10523 E. Co. Rd. 975 N. • Seymour, IN 47274  
 (812) 445-3404

TRUCK MANIFEST # 002650

**STRAIGHT BILL OF LADING** **EMERGENCY**

**CUSTOMER:**

ENERGY - Wholesale  
 10523 East County Road 975 North  
 Seymour, IN 47274  
 812-445-3404

**FOR CHEMICAL EMERGENCY**  
 SPILL, LEAK, FIRE, EXPOSURE, OR ACCIDENT  
 Call PERS - 24 Hours --  
 (800) 633-8253

**SUPPLIER: INERGY SERVICES LLC**

**DESTINATION:**

I.B.G. - Elizabethtown Ky.  
 Elizabethtown, KY 00000

**CONSIGNEE:**

I.B.G. - Elizabethtown Ky.  
 Elizabethtown, KY 00000

<b>PRODUCT DESCRIPTION &amp; CLASS</b>	<b>DATE:</b> 12/07/2012	<b>TIME IN:</b> 11:12:46AM	<b>TIME OUT:</b> 11:30:31AM
--	-------------------------	----------------------------	-----------------------------

	<b>GRAVITY</b>	<b>FACTOR</b>	<b>NET GALLONS @60F</b>
<b>1 CARGO TANK</b>	0.503	4.19	9,232

**LIQUEFIED PETROLEUM GAS**  
 2.1 UN 1075  
 NON CORROSIVE

<b>ORDER #</b>				
<b>WATER CAPACITY</b>	<b>% FILLED</b>	<b>GROSS WT.</b>	<b>TARE WT.</b>	<b>NET WT.</b>
10,500	88%	79,480	40,800	38,680

The product loaded hereon has been odorized in the amount of 1.38 pounds of ethyl mercaptan.

"This is to certify that the above named materials are properly classified, described, packaged, marked and labeled, and are in proper condition for transportation, according to the applicable regulations of the Department of Transportation"

**SNIFF TEST PERFORMED**

**ORDER CHECKED BY:** John Wetzel

**RECEIVED FOR DELIVERY BY:** *Knox Napier*

<b>CARRIER:</b> T & T Trans. LLC	<b>DRIVER NAME:</b> Knox Napier	<b>TRAILER NO:</b> 1624
-------------------------------------	------------------------------------	----------------------------

**ENERGY SERVICES, LLC**  
**SEYMOUR TERMINAL**  
 10523 E. Co. Rd. 975 N. • Seymour, IN 47274  
 (812) 445-3404

**TRUCK MANIFEST**

10022647

<b>STRAIGHT BILL OF LADING</b>	<b>EMERGENCY RESPONSE</b>
--------------------------------	---------------------------

**CUSTOMER:**

ENERGY - Wholesale  
 10523 East County Road 975 North  
 Seymour, IN 47274  
 812-445-3404

**FOR CHEMICAL EMERGENCY**  
 SPILL, LEAK, FIRE, EXPOSURE, OR ACCIDENT  
 Call PERS - 24 Hours  
 (800) 633-8253

**SUPPLIER: ENERGY SERVICES LLC**

**DESTINATION:**

**CONSIGNEE:**

I.B.G.- Irvington Ky.  
 Irvington, KY 00000

I.B.G.- Irvington Ky.  
 Irvington, KY 00000

<b>PRODUCT DESCRIPTION &amp; CLASS</b>	<b>DATE:</b> 12/07/2012	<b>TIME IN:</b> 9:16:18AM	<b>TIME OUT:</b> 9:32:01AM
--	-------------------------	---------------------------	----------------------------

**1 CARGO TANK**

**LIQUEFIED PETROLEUM GAS**  
**2.1 UN 1075**  
**NON CORROSIVE**

GRAVITY	FACTOR	NET GALLONS @60F
0.503	4.19	9,647
77-40-45-69-64		
81-62-65-72-69		

ORDER #

<b>WATER CAPACITY</b> 11,600	<b>% FILLED</b> 83%	<b>GROSS WT.</b> 79,840	<b>TARE WT.</b> 39,420	<b>NET WT.</b> 40,420
---------------------------------	------------------------	----------------------------	---------------------------	--------------------------

The product loaded hereon has been odorized in the amount of 1.41 pounds of ethyl mercaptan.

"This is to certify that the above named materials are properly classified, described, packaged, marked and labeled, and are in proper condition for transportation, according to the applicable regulations of the Department of Transportation"

SNIFF TEST PERFORMED

**ORDER CHECKED BY:** John Wetzel

**RECEIVED FOR DELIVERY BY:** Kyle Groves

<b>CARRIER:</b> PineLine Transport	<b>DRIVER NAME:</b> Kyle Groves	<b>TRAILER NO.:</b> 5
---------------------------------------	------------------------------------	--------------------------



**SEYMOUR TERMINAL**  
 10523 E. Co. Rd. 975 N. • Seymour, IN 47274  
 (812) 445-3404

**TRUCK MANIFEST #: 10022629**

<b>STRAIGHT BILL OF LADING</b>	<b>EMERGENCY RESPONSE</b>
--------------------------------	---------------------------

**CUSTOMER:**

**INERGY - Wholesale**  
 10523 East County Road 975 North  
 Seymour, IN 47274  
 812-445-3404

**FOR CHEMICAL EMERGENCY**  
 SPILL, LEAK, FIRE, EXPOSURE, OR ACCIDENT  
 Call PERS - 24 Hours  
 (800) 633-8253

**SUPPLIER: INERGY SERVICES LLC**

**DESTINATION:**

**I.B.G. Brandenburg, KY.**  
 3340 Rv Pass Road  
 Brandenburg, KY 00001

**CONSIGNEE:**

**I.B.G. Brandenburg, KY.**  
 3340 Rv Pass Road  
 Brandenburg, KY 00001

<b>PRODUCT DESCRIPTION &amp; CLASS</b>	<b>DATE:</b> 12/06/2012	<b>TIME IN:</b> 9:03:52AM	<b>TIME OUT:</b> 9:18:11AM
--	-------------------------	---------------------------	----------------------------

<b>1 CARGO TANK</b>	<b>GRAVITY</b>	<b>FACTOR</b>	<b>NET GALLONS @60F</b>
	0.503	4.19	9,337
<b>LIQUEFIED PETROLEUM GAS</b>	<i>START 26%</i>		
<b>2.1 UN 1075</b>	<i>END 65%</i>		
<b>NON CORROSIVE</b>			

**ORDER #**

<b>WATER CAPACITY</b> 11,200	<b>% FILLED</b> 83%	<b>GROSS WT.</b> 79,900	<b>TARE WT.</b> 40,780	<b>NET WT.</b> 39,120
---------------------------------	------------------------	----------------------------	---------------------------	--------------------------

The product loaded hereon has been odorized in the amount of 1.40 pounds of ethyl mercaptan.

"This is to certify that the above named materials are properly classified, described, packaged, marked and labeled, and are in proper condition for transportation, according to the applicable regulations of the Department of Transportation"

SNIFF TEST PERFORMED

<b>ORDER CHECKED BY:</b> John Wetzel	<b>RECEIVED FOR DELIVERY BY:</b> <i>Richard Harding</i>
<b>CARRIER:</b> Pipeline Transport	<b>DRIVER NAME:</b> Richard Harding
	<b>TRAILER NO:</b> 300

**SEYMOUR TERMINAL**  
 10523 E. Co. Rd. 975 N. • Seymour, IN 47274  
 (812) 445-3404

TRUCK MANIFEST #: 10022625

<b>STRAIGHT BILL OF LADING</b>	<b>EMERGENCY RESPONSE</b>
--------------------------------	---------------------------

**CUSTOMER:**

**INERGY - Wholesale**  
 10523 East County Road 975 North  
 Seymour, IN 47274  
 812-445-3404

**FOR CHEMICAL EMERGENCY:**  
 SPILL, LEAK, FIRE, EXPOSURE, OR ACCIDENT  
 Call PERS - 24 Hours  
 (800) 633-8253

SUPPLIER: **INERGY SERVICES LLC**

**DESTINATION:**

**I.B.G.- Irvington Ky.**  
  
**Irvington, KY 00000**

**CONSIGNEE:**

**I.B.G.- Irvington Ky.**  
  
**Irvington, KY 00000**

<b>PRODUCT DESCRIPTION &amp; CLASS</b>	<b>DATE:</b> 12/06/2012	<b>TIME IN:</b> 3:22:59AM	<b>TIME OUT:</b> 3:36:28AM
--	-------------------------	---------------------------	----------------------------

**1 CARGO TANK**

**LIQUEFIED PETROLEUM GAS**  
**2.1 UN 1075**  
**NON CORROSIVE**

<b>GRAVITY</b>	<b>FACTOR</b>	<b>NET GALLONS @60F</b>
0.503	4.19	9,279
START	25	16 - 17
END	40	40 - 30

<b>ORDER #</b>
----------------

<b>WATER CAPACITY</b> 11,200	<b>% FILLED</b> 83%	<b>GROSS WT.</b> 79,900	<b>TARE WT.</b> 41,020	<b>NET WT.</b> 38,880
---------------------------------	------------------------	----------------------------	---------------------------	--------------------------

The product loaded hereon has been odorized in the amount of 1.30 pounds of ethyl mercaptan.

"This is to certify that the above named materials are properly classified, described, packaged, marked and labeled, and are in proper condition for transportation, according to the applicable regulations of the Department of Transportation"

SNIFF TEST PERFORMED

**ORDER CHECKED BY:** John Wetzel

**RECEIVED FOR DELIVERY BY:** *Richard Harding*

<b>CARRIER:</b> Pinnacle Transport	<b>DRIVER NAME:</b> Richard Harding	<b>TRAILER NO.:</b> 300
---------------------------------------	--	----------------------------

**ENERGY SERVICES, LLC**

**SEYMOUR TERMINAL**

10523 E. Co. Rd. 975 N. • Seymour, IN 47274  
(812) 445-3404

TRUCK MANIFEST #: 10022590

<b>STRAIGHT BILL OF LADING</b>	<b>EMERGENCY RESPONSE</b>
--------------------------------	---------------------------

**CUSTOMER:**

**ENERGY - Wholesale**  
10523 East County Road 975 North  
Seymour, IN 47274  
812-445-3404

FOR CHEMICAL EMERGENCY  
SPILL, LEAK, FIRE, EXPOSURE, OR ACCIDENT  
Call PERS - 24 Hours  
(800) 633-8253

SUPPLIER: **ENERGY SERVICES LLC**

**DESTINATION:**

**I.B.G. Brandenburg, KY.**  
3340 Rv Pass Road  
Brandenburg, KY 00001

**CONSIGNEE:**

**I.B.G. Brandenburg, KY.**  
3340 Rv Pass Road  
Brandenburg, KY 00001

<b>PRODUCT DESCRIPTION &amp; CLASS</b>	<b>DATE:</b> 11/30/2012	<b>TIME IN:</b> 4:01:10PM	<b>TIME OUT:</b> 4:17:08PM
--	-------------------------	---------------------------	----------------------------

<b>GRAVITY</b>	<b>FACTOR</b>	<b>NET GALLONS @60F</b>
0.503	4.19	9,107

**1 CARGO TANK**

**LIQUEFIED PETROLEUM GAS**  
2.1 UN 1075  
NON CORROSIVE

ORDER #

<b>WATER CAPACITY</b> 10,601	<b>% FILLED</b> 86%	<b>GROSS WT.</b> 79,740	<b>TARE WT.</b> 41,580	<b>NET WT.</b> 38,160
---------------------------------	------------------------	----------------------------	---------------------------	--------------------------

The product loaded hereon has been odorized in the amount of 1.36 pounds of ethyl mercaptan.

"This is to certify that the above named materials are properly classified, described, packaged, marked and labeled, and are in proper condition for transportation, according to the applicable regulations of the Department of Transportation"

SNIFF TEST PERFORMED

ORDER CHECKED BY: **John Wetzel**

RECEIVED FOR DELIVERY BY: *[Signature]*

CARRIER: **Wischmeier Trucking Inc.**

DRIVER NAME: **William J Ticen JR**

TRAILER NO: **042**

**SEYMOUR TERMINAL**  
 10523 E. Co. Rd. 975 N. • Seymour, IN 47274  
 (812) 445-3404

**TRUCK MANIFEST #:** 10022713

**STRAIGHT THROUGH LOADING**

**EMERGENCY RESPONSE**

**FOR CHEMICAL EMERGENCY**  
**SPILL, LEAK, FIRE, EXPOSURE, OR ACCIDENT**  
 Call PERS - 24 Hours  
 (800) 633-8253

**Energy Services**  
 10523 East County Road 975 North  
 Seymour, IN 47274  
 812-445-3404

**SUPPLIER ENERGY SERVICES LLC**

**DESTINATION:**

**CONSIGNEE:**

I.B.G. - Elizabethtown Ky.

I.B.G. - Elizabethtown Ky.

Elizabethtown, KY 00000

Elizabethtown, KY 00000

<b>PRODUCT DESCRIPTION &amp; CLASS</b>	<b>DATE:</b> 12/12/2012	<b>TIME IN:</b> 4:23:31PM	<b>TIME OUT:</b> 4:39:23PM
--	-------------------------	---------------------------	----------------------------

**1 CARGO TANK**

<b>GRAVITY</b>	<b>FACTOR</b>	<b>NET GALLONS @60F</b>
0.503	4.19	9,222

**LIQUEFIED PETROLEUM GAS**  
 2.1 UN 1075  
 NON CORROSIVE

ORDER #

<b>WATER CAPACITY</b> 11,600	<b>% FILLED</b> 80%	<b>GROSS WT.</b> 79,840	<b>TARE WT.</b> 41,200	<b>NET WT.</b> 38,640
---------------------------------	------------------------	----------------------------	---------------------------	--------------------------

The product loaded hereon has been odorized in the amount of 1.38 <sup>WST</sup> pounds of ethyl mercaptan.

"This is to certify that the above named materials are properly classified, described, packaged, marked and labeled, and are in proper condition for transportation, according to the applicable regulations of the Department of Transportation"

SNIFF TEST PERFORMED

ORDER CHECKED BY: John Wetzel

RECEIVED FOR DELIVERY BY: *William Taylor*

<b>CARRIER:</b> I.A.T. Trans. LLC	<b>DRIVER NAME:</b> William Taylor	<b>TRAILER NO.:</b> 1605
--------------------------------------	---------------------------------------	-----------------------------

**SEYMOUR TERMINAL**  
 10523 E. Co. Rd. 975 N. • Seymour, IN 47274  
 (812) 445-3404

TRUCK MANIFEST #:

10022710

<b>STRAIGHT BILL OF LADING</b>		<b>EMERGENCY RESPONSE</b>
CUSTOMER:		FOR CHEMICAL EMERGENCY SPILL, LEAK, FIRE, EXPOSURE, OR ACCIDENT Call PERS - 24 Hours (800) 633-8253
Inergy Services 10523 East County Road 975 North Seymour, IN 47274 812-445-3404		SUPPLIER: INERGY SERVICES LLC

DESTINATION:	CONSIGNEE:
I.B.G.- Irvington Ky. Irvington, KY 00000	I.B.G.- Irvington Ky. Irvington, KY 00000

PRODUCT DESCRIPTION & CLASS	DATE: 12/12/2012	TIME IN: 2:09:02PM	TIME OUT: 2:23:45PM
1 CARGO TANK LIQUEFIED PETROLEUM GAS 2.1 UN 1075 NON CORROSIVE	GRAVITY	FACTOR	NET GALLONS
	0.503	4.19	9,742
	62-70-70-70-67		
	68-85-85-70-67		

ORDER #			
WATER CAPACITY	% FILLED	GROSS WT.	TARE WT.
11,600	84%	79,800	38,980
		NET WT. 40,820	

The product loaded hereon has been odorized in the amount of 1.40 pounds of ethyl mercaptan.

"This is to certify that the above named materials are properly classified, described, packaged, marked and labeled, and are in proper condition for transportation, according to the applicable regulations of the Department of Transportation"

ORDER CHECKED BY: John Wetzel	RECEIVED FOR DELIVERY BY: Kyle Groves	TRAILER NO: 5
GARRIER: Pipeline Transport	DRIVER NAME: Kyle Groves	

**SEYMOUR TERMINAL**  
 10523 E. Co. Rd. 975 N. • Seymour, IN 47274  
 (812) 445-3404

**TRUCK MANIFEST #: 10022709**

<b>STRAIGHT BILL OF LADING</b>	<b>EMERGENCY RESPONSE</b>
--------------------------------	---------------------------

**CUSTOMER:**  
 Inergy Services  
 10523 East County Road 975 North  
 Seymour, IN 47274  
 812-445-3404

FOR CHEMICAL EMERGENCY  
 SPILL, LEAK, FIRE, EXPOSURE, OR ACCIDENT  
 Call PERS - 24 Hours  
 (800) 633-8253

**SUPPLIER INERGY SERVICES LLC**

<b>DESTINATION:</b> I.B.G. Brandenburg, KY. 3340 Rv Pass Road Brandenburg, KY 00001	<b>CONSIGNEE:</b> I.B.G. Brandenburg, KY. 3340 Rv Pass Road Brandenburg, KY 00001
--	--

<b>PRODUCT DESCRIPTION &amp; CLASS</b>	<b>DATE:</b> 12/12/2012	<b>TIME IN:</b> 1:30:45PM	<b>TIME OUT:</b> 1:47:19PM
--	-------------------------	---------------------------	----------------------------

<b>GRAVITY</b>	<b>FACTOR</b>	<b>NET GALLONS @60F</b>
0.503	4.19	9,499

*70%  
E 60%*

**1 CARGO TANK**  
**LIQUEFIED PETROLEUM GAS**  
 2.1 UN 1075  
**NON CORROSIVE**

<b>ORDER #</b>			
<b>WATER CAPACITY</b> 10,800	<b>% FILLED</b> 88%	<b>GROSS WT.</b> 79,800	<b>TARE WT.</b> 40,000 <b>NET WT.</b> 39,800

The product loaded hereon has been odorized in the amount of 1.42 pounds of ethyl mercaptan.

"This is to certify that the above named materials are properly classified, described, packaged, marked and labeled, and are in proper condition for transportation, according to the applicable regulations of the Department of Transportation"

SNIFF TEST PERFORMED

<b>ORDER CHECKED BY:</b> John Wetzel	<b>RECEIVED FOR DELIVERY BY:</b> <i>[Signature]</i>	<b>TRAILER NO:</b> 76
<b>CARRIER:</b> Pipeline Transport	<b>DRIVER NAME:</b> Trevor R Thayer	

# SEYMOUR TERMINAL

10523 E. Co. Rd. 975 N. • Seymour, IN 47274  
(812) 445-3404

TRUCK MANIFEST #: 10022704

<b>STRAIGHT BILL OF LADING</b>	<b>EMERGENCY RESPONSE</b>
--------------------------------	---------------------------

**CUSTOMER:**

Inergy Services  
10523 East County Road 975 North  
Seymour, IN 47274  
812-445-3404

FOR CHEMICAL EMERGENCY  
SPILL, LEAK, FIRE, EXPOSURE, OR ACCIDENT  
Call PERS - 24 Hours  
(800) 633-8253

SUPPLIER: **INERGY SERVICES LLC**

**DESTINATION:**

I.B.G. - Constantine Ky.  
Constantine, KY 00000

**CONSIGNEE:**

I.B.G. - Constantine Ky.  
Constantine, KY 00000

<b>PRODUCT DESCRIPTION &amp; CLASS</b>	<b>DATE:</b> 12/12/2012	<b>TIME IN:</b> 11:01:03AM	<b>TIME OUT:</b> 11:17:35AM
--	-------------------------	----------------------------	-----------------------------

	GRAVITY	FACTOR	NET GALLONS @80F
<b>1 CARGO TANK</b>	0.503	4.19	9,227

**LIQUEFIED PETROLEUM GAS**  
**2.1 UN 1075**  
**NON CORROSIVE**

ORDER #

<b>WATER CAPACITY</b> 10,500	<b>% FILLED</b> 88%	<b>GROSS WT.</b> 79,700	<b>TARE WT.</b> 41,040	<b>NET WT.</b> 38,660
---------------------------------	------------------------	----------------------------	---------------------------	--------------------------

The product loaded hereon has been odorized in the amount of 1.35 pounds of ethyl mercaptan.

"This is to certify that the above named materials are properly classified, described, packaged, marked and labeled, and are in proper condition for transportation, according to the applicable regulations of the Department of Transportation"

SNIFF TEST PERFORMED

ORDER CHECKED BY: **John Wetzel**

RECEIVED FOR DELIVERY BY: *[Signature]*

CARRIER: **I.&I. Trans. LLC**

DRIVER NAME: **Knox Napier**

TRAILER NO: **1624**

CUSTOMER COPY

**SEYMOUR TERMINAL**  
 10523 E. Co. Rd. 975 N. • Seymour, IN 47274  
 (812) 445-3404

TRUCK MANIFEST #: **10022700**

<b>STRAIGHT BILL OF LADING</b>	<b>EMERGENCY RESPONSE</b>
--------------------------------	---------------------------

<b>CUSTOMER:</b>  Inergy Services 10523 East County Road 975 North Seymour, IN 47274 812-445-3404	FOR CHEMICAL EMERGENCY SPILL, LEAK, FIRE, EXPOSURE, OR ACCIDENT Call PERS - 24 Hours (800) 633-8253  SUPPLIER: <b>INERGY SERVICES LLC</b>
--	--

<b>DESTINATION:</b>  I.B.G.- Irvington Ky.  Irvington, KY 00000	<b>CONSIGNEE:</b>  I.B.G.- Irvington Ky.  Irvington, KY 00000
---	---

PRODUCT DESCRIPTION & CLASS	DATE: 12/12/2012	TIME IN: 8:53:27AM	TIME OUT: 9:07:01AM
-----------------------------	------------------	--------------------	---------------------

	GRAVITY	FACTOR	NET GALLONS @80F
<b>1 CARGO TANK</b>	0.503	4.19	<b>9,704</b>
<b>LIQUEFIED PETROLEUM GAS</b>	63-70-60-70-66		
<b>2.1 UN 1075</b>	7284-84-70-67		
<b>NON-CORROSIVE</b>			

ORDER # \_\_\_\_\_

WATER CAPACITY 11,600	% FILLED 84%	GROSS WT. 79,900	TARE WT. 39,240	NET WT. 40,660
--------------------------	-----------------	---------------------	--------------------	-------------------

The product loaded hereon has been odorized in the amount of 1.45 pounds of ethyl mercaptan.

"This is to certify that the above named materials are properly classified, described, packaged, marked and labeled, and are in proper condition for transportation, according to the applicable regulations of the Department of Transportation"

SNIFF TEST PERFORMED

ORDER CHECKED BY: <b>John Wetzel</b>	RECEIVED FOR DELIVERY BY: <i>Kyle Groves</i>
--------------------------------------	--

CARRIER: <b>Pipeline Transport</b>	DRIVER NAME: <b>Kyle Groves</b>	TRAILER NO: <b>5</b>
---------------------------------------	------------------------------------	-------------------------



**SEYMOUR TERMINAL**  
 10523 E. Co. Rd. 975 N. • Seymour, IN 47274  
 (812) 445-3404

TRUCK MANIFEST #: **10022681**

<b>STRAIGHT BILL OF LADING</b>	<b>EMERGENCY RESPONSE</b>
--------------------------------	---------------------------

<b>CUSTOMER:</b> Inergy Services 10523 East County Road 975 North Seymour, IN 47274 812-445-3404	<b>FOR CHEMICAL EMERGENCY</b> SPILL, LEAK, FIRE, EXPOSURE, OR ACCIDENT Call PERS - 24 Hours (800) 633-8253  <b>SUPPLIER: INERGY SERVICES LLC</b>
--	---

<b>DESTINATION:</b> I.B.G.- Irvington Ky.  Irvington, KY 00000	<b>CONSIGNEE:</b> I.B.G.- Irvington Ky.  Irvington, KY 00000
---	---

<b>PRODUCT DESCRIPTION &amp; CLASS</b>	<b>DATE:</b> 12/11/2012	<b>TIME IN:</b> 8:27:28AM	<b>TIME OUT:</b> 8:41:01AM
--	-------------------------	---------------------------	----------------------------

PRODUCT DESCRIPTION & CLASS	GRAVITY	FACTOR	NET GALLONS
<b>1 CARGO TANK</b> - <i>Bobtail loaded</i> <b>LIQUEFIED PETROLEUM GAS</b> <b>2.1 UN 1075</b> <b>NON CORROSIVE</b>	0.503	4.19	<del>9,685</del> <b>9,695</b>
	67 - 61 - 51 - 73 - 69		
	71 - 80 - 70 - 73 - 69		

<b>ORDER #</b>
----------------

<b>WATER CAPACITY</b> 11,600	<b>% FILLED</b> 84%	<b>GROSS WT</b> 70,840	<b>TARE WT.</b> 39,220	<b>NET WT.</b> 40,620
---------------------------------	------------------------	---------------------------	---------------------------	--------------------------

The product loaded hereon has been odorized in the amount of 1.45 pounds of ethyl mercaptan.

"This is to certify that the above named materials are properly classified, described, packaged, marked and labeled, and are in proper condition for transportation, according to the applicable regulations of the Department of Transportation"

SNIFF TEST PERFORMED

ORDER CHECKED BY: John Wetzel      RECEIVED FOR DELIVERY BY: Kyle Groves

<b>CARRIER:</b> Pipeline Transport	<b>DRIVER NAME:</b> Kyle Groves	<b>TRAILER NO.:</b> 5
---------------------------------------	------------------------------------	--------------------------

**SEYMOUR TERMINAL**  
**10523 E. Co. Rd. 975 N. • Seymour, IN 47274**  
**(812) 445-3404**

TRUCK MANIFEST #: **10022665**

<b>STRAIGHT BILL OF LADING</b>	<b>EMERGENCY RESPONSE</b>
--------------------------------	---------------------------

**CUSTOMER:**

**INERGY - Wholesale**  
**10523 East County Road 975 North**  
**Seymour, IN 47274**  
**812-445-3404**

**FOR CHEMICAL EMERGENCY**  
**SPILL, LEAK, FIRE, EXPOSURE, OR ACCIDENT**  
**Call PERS - 24 Hours**  
**(800) 633-8253**

**SUPPLIER: INERGY SERVICES LLC**

**DESTINATION:**

**I.B.G.- Irvington Ky.**  
**Irvington, KY 00000**

**CONSIGNEE:**

**I.B.G.- Irvington Ky.**  
**Irvington, KY 00000**

<b>PRODUCT DESCRIPTION &amp; CLASS</b>	<b>DATE:</b> 12/10/2012	<b>TIME IN:</b> 5:28:36AM	<b>TIME OUT:</b> 5:44:49AM
--	-------------------------	---------------------------	----------------------------

**1 CARGO TANK**  
**LIQUEFIED PETROLEUM GAS**  
**2.1 UN 1075**  
**NON CORROSIVE**

	GRAVITY	FACTOR	NET GALLONS @60F
	0.503	4.19	9,446
S% 80		55 45	60 60
E°D 80		7 72	60 60

ORDER #

<b>WATER CAPACITY</b> 10,800	<b>% FILLED</b> 87%	<b>GROSS WT.</b> 79,860	<b>TARE WT.</b> 40,280	<b>NET WT.</b> 39,580
---------------------------------	------------------------	----------------------------	---------------------------	--------------------------

The product loaded hereon has been odorized in the amount of 1.41 pounds of ethyl mercaptan.

"This is to certify that the above named materials are properly classified, described, packaged, marked and labeled, and are in proper condition for transportation, according to the applicable regulations of the Department of Transportation"

SNIFF TEST PERFORMED

**ORDER CHECKED BY:** John Wetzel

**RECEIVED FOR DELIVERY BY:** *[Signature]*

**CARRIER:**  
Pinnacle Transport

**DRIVER NAME:**  
Trevor R Thayer

**TRAILER NO:**  
76

INERG

# SEYMOUR TERMINAL

10523 E. Co. Rd. 975 N. • Seymour, IN 47274  
(812) 445-3404

TRUCK MANIFEST #: 10022674

<b>STRAIGHT BILL OF LADING</b>	<b>EMERGENCY RESPONSE</b>
--------------------------------	---------------------------

**CUSTOMER:**

**INERGY - Wholesale**  
10523 East County Road 975 North  
Seymour, IN 47274  
812-445-3404

**FOR CHEMICAL EMERGENCY**  
SPILL, LEAK, FIRE, EXPOSURE, OR ACCIDENT  
Call PERS - 24 Hours  
(800) 633-8253

SUPPLIER: **INERGY SERVICES LLC**

**DESTINATION:**

**I.B.G. - Irvington Ky.**  
  
Irvington, KY 00000

**CONSIGNEE:**

**I.B.G. - Irvington Ky.**  
  
Irvington, KY 00000

<b>PRODUCT DESCRIPTION &amp; CLASS</b>	<b>DATE:</b> 12/10/2012	<b>TIME IN:</b> 10:58:24AM	<b>TIME OUT:</b> 11:16:52AM
--	-------------------------	----------------------------	-----------------------------

	GRAVITY	FACTOR	NET GALLONS @60F
<b>1 CARGO TANK</b>	0.503	4.19	9,470
	50% 80	72.72	6060
<b>LIQUEFIED PETROLEUM GAS</b>	E 10% 80	72.72	7476
<b>2.1 UN 1075</b>			
<b>NON CORROSIVE</b>			

ORDER #

<b>WATER CAPACITY</b> 10,800	<b>% FILLED</b> 88%	<b>GROSS WT.</b> 79,780	<b>TARE WT.</b> 40,100	<b>NET WT.</b> 39,680
---------------------------------	------------------------	----------------------------	---------------------------	--------------------------

The product loaded hereon has been odorized in the amount of 1.42 pounds of ethyl mercaptan.

"This is to certify that the above named materials are properly classified, described, packaged, marked and labeled, and are in proper condition for transportation, according to the applicable regulations of the Department of Transportation"

SNIFF TEST PERFORMED

ORDER CHECKED BY: **John Wetzel**

RECEIVED FOR DELIVERY BY: *[Signature]*

<b>CARRIER:</b> Pipeline Transport	<b>DRIVER NAME:</b> Trevor R Thayer	<b>TRAILER NO:</b> 76
---------------------------------------	--	--------------------------

CUSTOMER COPY

# ENERGY SERVICES, LLC

## SEYMOUR TERMINAL

10523 E. Co. Rd. 975 N. • Seymour, IN 47274

(812) 445-3404

TRUCK MANIFEST #: 10022820

STRAIGHT BILL OF LADING	EMERGENCY RESPONSE
-------------------------	--------------------

**CUSTOMER:**

Inergy Services  
10523 East County Road 975 North  
Seymour, IN 47274  
812-445-3404

FOR CHEMICAL EMERGENCY  
SPILL, LEAK, FIRE, EXPOSURE, OR ACCIDENT  
Call PERS - 24 Hours  
(800) 633-8253

**SUPPLIER: INERGY SERVICES LLC**

**DESTINATION:**

I.B.G. - Elizabethtown Ky.

Elizabethtown, KY 00000

**CONSIGNEE:**

I.B.G. - Elizabethtown Ky.

Elizabethtown, KY 00000

PRODUCT DESCRIPTION & CLASS	DATE: 12/22/2012	TIME IN: 4:07:19PM	TIME OUT: 4:23:37PM
-----------------------------	------------------	--------------------	---------------------

	GRAVITY	FACTOR	NET GALLONS @60F
1 CARGO TANK	0.503	4.19	9,275

LIQUEFIED PETROLEUM GAS  
2.1 UN 1075  
NON CORROSIVE

ORDER #

WATER CAPACITY 10,500	% FILLED 88%	GROSS WT. 79,460	TARE WT. 40,600	NET WT. 38,860
--------------------------	-----------------	---------------------	--------------------	-------------------

The product loaded hereon has been odorized in the amount of 1.39 pounds of ethyl mercaptan.

"This is to certify that the above named materials are properly classified, described, packaged, marked and labeled, and are in proper condition for transportation, according to the applicable regulations of the Department of Transportation"

SNIFF TEST PERFORMED

ORDER CHECKED BY: John Wetzel

RECEIVED FOR DELIVERY BY: 

CARRIER: I&I Trans. LLC

DRIVER NAME: Knox Napier

TRAILER NO: 1624

CUSTOMER COPY

# ENERGY SERVICES, LLC

## SEYMOUR TERMINAL

10523 E. Co. Rd. 975 N. • Seymour, IN 47274

(812) 445-3404

TRUCK MANIFEST #: 10022816

<b>STRAIGHT BILL OF LADING</b>	<b>EMERGENCY RESPONSE</b>
--------------------------------	---------------------------

**CUSTOMER:**

Inergy Services  
10523 East County Road 975 North  
Seymour, IN 47274  
812-445-3404

FOR CHEMICAL EMERGENCY  
SPILL, LEAK, FIRE, EXPOSURE, OR ACCIDENT  
Call PERS - 24 Hours  
(800) 633-8253

SUPPLIER: INERGY SERVICES LLC

**DESTINATION:**

I.B.G. Brandenburg, KY.  
3340 Ry Pass Road  
Brandenburg, KY 00001

**CONSIGNEE:**

I.B.G. Brandenburg, KY.  
3340 Ry Pass Road  
Brandenburg, KY 00001

<b>PRODUCT DESCRIPTION &amp; CLASS</b>	<b>DATE:</b> 12/22/2012	<b>TIME IN:</b> 10:30:00AM	<b>TIME OUT:</b> 10:45:29AM
--	-------------------------	----------------------------	-----------------------------

	GRAVITY	FACTOR	NET GALLONS @60F
1 CARGO TANK	0.503	4.19	9,260

LIQUEFIED PETROLEUM GAS  
2.1 UN 1075  
NON CORROSIVE

ORDER #

<b>WATER CAPACITY</b> 10,500	<b>% FILLED</b> 88%	<b>GROSS WT.</b> 79,600	<b>TARE WT.</b> 40,800	<b>NET WT.</b> 38,800
---------------------------------	------------------------	----------------------------	---------------------------	--------------------------

The product loaded hereon has been odorized in the amount of 1.39 pounds of ethyl mercaptan.

"This is to certify that the above named materials are properly classified, described, packaged, marked and labeled, and are in proper condition for transportation; according to the applicable regulations of the Department of Transportation"

SNIFF TEST PERFORMED

ORDER CHECKED BY: John Wetzel

RECEIVED FOR DELIVERY BY: *[Signature]*

<b>CARRIER:</b> T & T Trans. LLC	<b>DRIVER NAME:</b> Knox Napier	<b>TRAILER NO.:</b> 1624
-------------------------------------	------------------------------------	-----------------------------

# INERGY SERVICES, LLC

## SEYMOUR TERMINAL

10523 E. Co. Rd. 975 N. • Seymour, IN 47274

(812) 445-3404

TRUCK MANIFEST #: **10022901**

<b>STRAIGHT BILL OF LADING</b>	<b>EMERGENCY RESPONSE</b>
--------------------------------	---------------------------

**CUSTOMER:**

Inergy Services  
10523 East County Road 975 North  
Seymour, IN 47274  
812-445-3404

FOR CHEMICAL EMERGENCY  
SPILL, LEAK, FIRE, EXPOSURE, OR ACCIDENT  
Call PERS - 24 Hours  
(800) 633-8253

SUPPLIER: **INERGY SERVICES LLC**

**DESTINATION:**

I.B.G.- Irvington Ky.

Irvington, KY 00000

**CONSIGNEE:**

I.B.G.- Irvington Ky.

Irvington, KY 00000

<b>PRODUCT DESCRIPTION &amp; CLASS</b>	<b>DATE:</b> 12/29/2012	<b>TIME IN:</b> 9:14:13AM	<b>TIME OUT:</b> 9:27:21AM
--	-------------------------	---------------------------	----------------------------

**1 CARGO TANK**

**LIQUEFIED PETROLEUM GAS**

**2.1 UN 1075**

**NON CORROSIVE**

*Bobtail -  
Loaded -*

GRAVITY: 0.503      FACTOR: 4.19      NET GALLONS: **9,384**

*51-30-35-52-49 Start  
54-52-50-52-49 End*

ORDER #

WATER CAPACITY <b>11,600</b>	% FILLED <b>81%</b>	GROSS WT. <b>79,820</b>	TARE WT. <b>40,500</b>	NET WT. <b>39,320</b>
------------------------------	---------------------	-------------------------	------------------------	-----------------------

The product loaded hereon has been odorized in the amount of 1.40 pounds of ethyl mercaptan.

"This is to certify that the above named materials are properly classified, described, packaged, marked and labeled, and are in proper condition for transportation, according to the applicable regulations of the Department of Transportation"

SNIFF TEST PERFORMED

ORDER CHECKED BY: **John Wetzel**

RECEIVED FOR DELIVERY BY: *Kyle Groves*

CARRIER: <b>Prime Transport</b>	DRIVER NAME: <b>Kyle Groves</b>	TRAILER NO: <b>5</b>
---------------------------------	---------------------------------	----------------------

...NE, LLC  
...nty Rd. 975 N.  
...mour, IN 47274

TRUCK MANIFEST #: 10022175

STRAIGHT BILL OF LADING

EMERGENCY RESPONSE  
FOR CHEMICAL EMERGENCY  
SPILL, LEAK, FIRE, EXPOSURE, OR ACCIDENT  
Call PERS - 24 Hours  
(800) 633-8253

ENERGY - Wholesale  
10523 East County Road 975 North  
Seaman, IN 47274  
812-445-3404

SUPPLIER: ENERGY-PROPANE - L.L.C

DESTINATION: I.B.G. - Elizabethtown Ky.  
Elizabethtown, KY 00000

CONSIGNEE: I.B.G. - Elizabethtown Ky.  
Elizabethtown, KY 00000

PRODUCT DESCRIPTION & CLASS	DATE: 08/10/2012	TIME IN: 12:44:08PM	TIME OUT: 1:06:41PM
	GRAVITY	FACTOR	NET GALLONS @60F
	0.503	4.19	8.907

1 CARGO TANK  
LIQUEFIED PETROLEUM GAS  
2.1 UN 1075  
NON CORROSIVE

ORDER #				
WATER CAPACITY 10,500	% FILLED 85%	GROSS WT. 79,760	TARE WT. 42,440	NET WT. 37,320

The product loaded hereon has been odorized in the amount of 1.33 pounds of ethyl mercaptan.

"This is to certify that the above named materials are properly classified, described, packaged, marked and labeled, and are in proper condition for transportation, according to the applicable regulations of the Department of Transportation"

SNIFF TEST PERFORMED

ORDER CHECKED BY: John Wetzel

RECEIVED FOR DELIVERY BY: *James Jordan*

CARRIER: I & T Trans. I.C.

DRIVER NAME: Darrell W Jordan

TRAILER NO: 1613

CUSTOMER COPY

Send  
This fax was

**PROFANE, LLC**  
 10523 East County Rd. 975 N.  
 Seymour, IN 47274

INVOICE

TRUCK MANIFEST #: **10022216**

**STRAIGHT BILL OF LADING**

**EMERGENCY RESPONSE**

**CUSTOMER:**  
**INERGY - Wholesale**  
**10523 East County Road 975 North**  
**Seymour, IN 47274**  
**812-445-3404**

**FOR CHEMICAL EMERGENCY**  
**SPILL, LEAK, FIRE, EXPOSURE, OR ACCIDENT**  
**Call PERS - 24 Hours**  
**(800) 633-8253**

**SUPPLIER: INERGY SERVICES LLC**

**DESTINATION:**

**CONSIGNEE:**

**I.B.G.- Irvington Ky.**

**I.B.G.- Irvington Ky.**

**Irvington, KY 00000**

**Irvington, KY 00000**

<b>PRODUCT DESCRIPTION &amp; CLASS</b>	<b>DATE:</b> 08/27/2012	<b>TIME IN:</b> 12:27:03PM	<b>TIME OUT:</b> 12:42:48PM
--	-------------------------	----------------------------	-----------------------------

	GRAVITY	FACTOR	NET GALLONS @60F
1 CARGO TANK	0.503	4.19	9,041 SM

**LIQUEFIED PETROLEUM GAS**  
**2.1 UN 1075**  
**NON CORROSIVE**

Start 00000  
 End 34979

ORDER #

<b>WATER CAPACITY</b> 10,601	<b>% FILLED</b> 85%	<b>GROSS WT.</b> 78,800	<b>TARE WT.</b> 40,920	<b>NET WT.</b> 37,880
---------------------------------	------------------------	----------------------------	---------------------------	--------------------------

The product loaded hereon has been odorized in the amount of 1.35 pounds of ethyl mercaptan.  
 SM

"This is to certify that the above named materials are properly classified, described, packaged, marked and labeled, and are in proper condition for transportation, according to the applicable regulations of the Department of Transportation"

SNIFF TEST PERFORMED

ORDER CHECKED BY: **John Wetzel**

RECEIVED FOR DELIVERY BY: *Steve Moore*

CARRIER: **Wischmeier Trucking Inc.**

DRIVER NAME: **Steve Moore**

TRAILER NO: **060**

CUSTOMER COPY



# PROPANE, LLC

10523 East County Rd. 975 N.  
Seymour, IN 47274

TRUCK MANIFEST #: 10022221

## STRAIGHT BILL OF LADING

## EMERGENCY RESPONSE

FOR CHEMICAL EMERGENCY  
SPILL, LEAK, FIRE, EXPOSURE, OR ACCIDENT  
Call PERS - 24 Hours  
(800) 633-8253

**BUYER:**  
ENERGY - Wholesale  
10523 East County Road 975 North  
Seymour, IN 47274  
812-445-3404

**SUPPLIER:** INERGY SERVICES LLC

### DESTINATION:

I.B.G. - Elizabethtown Ky.  
Elizabethtown, KY 00000

### CONSIGNEE:

I.B.G. - Elizabethtown Ky.  
Elizabethtown, KY 00000

PRODUCT DESCRIPTION & CLASS	DATE: 08/28/2012	TIME IN: 7:15:34PM	TIME OUT: 7:35:52PM
-----------------------------	------------------	--------------------	---------------------

GRAVITY	FACTOR	NET GALLONS @60F
0.503	4.19	9,122

1 CARGO TANK

LIQUEFIED PETROLEUM GAS  
2.1 UN 1075  
NON CORROSIVE

ORDER #

WATER CAPACITY 10,500	% FILLED 87%	GROSS WT. 79,720	TARE WT. 41,500	NET WT. 38,220
--------------------------	-----------------	---------------------	--------------------	-------------------

The product loaded hereon has been odorized in the amount of 1.37 pounds of ethyl mercaptan.

"This is to certify that the above named materials are properly classified, described, packaged, marked and labeled, and are in proper condition for transportation, according to the applicable regulations of the Department of Transportation"

SNIFF TEST PERFORMED

ORDER CHECKED BY: John Wetzel

RECEIVED FOR DELIVERY BY: *Knox Napier*

CARRIER: I.A.I. Trans. LLC

DRIVER NAME: Knox Napier

TRAILER NO: 1624

CUSTOMER COPY

# PROPANE, LLC

10523 East County Rd. 975 N.  
Seymour, IN 47274

TRUCK MANIFEST #: 10022218

### STRAIGHT BILL OF LADING

### EMERGENCY RESPONSE

FROM:

**ENERGY - Wholesale**  
10523 East County Road 975 North  
Seymour, IN 47274  
812-445-3404

FOR CHEMICAL EMERGENCY  
SPILL, LEAK, FIRE, EXPOSURE, OR ACCIDENT  
Call PERS - 24 Hours  
(800) 633-8253

SUPPLIER: **ENERGY SERVICES LLC**

DESTINATION:

**I.B.G.- Irvington Ky.**  
**Irvington, KY 00000**

CONSIGNEE:

**I.B.G.- Irvington Ky.**  
**Irvington, KY 00000**

PRODUCT DESCRIPTION & CLASS	DATE: 08/28/2012	TIME IN: 9:18:26AM	TIME OUT: 9:33:31AM
-----------------------------	------------------	--------------------	---------------------

1 CARGO TANK

LIQUEFIED PETROLEUM GAS  
2.1 UN 1075  
NON CORROSIVE

GRAVITY	FACTOR	NET GALLONS @60F
0.503	4.19	9,045 SM

Start - - 5 3 3  
End - - 15 10 15

ORDER #

WATER CAPACITY	% FILLED	GROSS WT.	TARE WT.	NET WT.
10,601	85%	79,140	41,240	37,900

The product loaded hereon has been odorized in the amount of 1.35 pounds of ethyl mercaptan.  
SM

"This is to certify that the above named materials are properly classified, described, packaged, marked and labeled, and are in proper condition for transportation, according to the applicable regulations of the Department of Transportation"

SNIFF TEST PERFORMED

ORDER CHECKED BY: **John Wetzel**

RECEIVED FOR DELIVERY BY: *Steve Moore*

CARRIER: **Wischmeier Trucking Inc.**

DRIVER NAME: **Steve Moore**

TRAILER NO: **060**

# PROPANE, LLC

10523 East County Rd. 975 N.  
Seymour, IN 47274

TRUCK MANIFEST #: 10022222

## STRAIGHT BILL OF LADING

## EMERGENCY RESPONSE

CUSTOMER:

**INERGY - Wholesale**  
10523 East County Road 975 North  
Seymour, IN 47274  
812-445-3404

FOR CHEMICAL EMERGENCY  
SPILL, LEAK, FIRE, EXPOSURE, OR ACCIDENT  
Call PERS - 24 Hours  
(800) 633-8253

SUPPLIER: **INERGY SERVICES LLC**

DESTINATION:

**I.B.G.- Irvington Ky.**  
  
Irvington, KY 00000

CONSIGNEE:

**I.B.G.- Irvington Ky.**  
  
Irvington, KY 00000

PRODUCT DESCRIPTION & CLASS	DATE: 08/29/2012	TIME IN: 8:49:33AM	TIME OUT: 9:04:00AM
-----------------------------	------------------	--------------------	---------------------

GRAVITY	FACTOR	NET GALLONS @60F
0.503	4.19	9,408

1 CARGO TANK

LIQUEFIED PETROLEUM GAS  
2.1 UN 1075  
NON CORROSIVE

9-20-9-4-4 Start  
21-40-25-44 End

ORDER #

WATER CAPACITY	% FILLED	GROSS WT.	TARE WT.	NET WT.
11,600	81%	79,800	40,380	39,420

The product loaded hereon has been odorized in the amount of 1.41 pounds of ethyl mercaptan.

"This is to certify that the above named materials are properly classified, described, packaged, marked and labeled, and are in proper condition for transportation, according to the applicable regulations of the Department of Transportation"

SNIFF TEST PERFORMED

ORDER CHECKED BY: **John Wetzel**

RECEIVED FOR DELIVERY BY: *Kyle Groves*

CARRIER: **Pipeline Transport**

DRIVER NAME: **Kyle Groves**

TRAILER NO: **5**

CUSTOMER COPY

# PROPANE, LLC

10523 East County Rd. 975 N.  
Seymour, IN 47274

INVOICE

TRUCK MANIFEST #: 10022227

## STRAIGHT BILL OF LADING

## EMERGENCY RESPONSE

CUSTOMER:

**INERGY - Wholesale**  
10523 East County Road 975 North  
Seymour, IN 47274  
812-445-3404

FOR CHEMICAL EMERGENCY  
SPILL, LEAK, FIRE, EXPOSURE, OR ACCIDENT  
Call PERS - 24 Hours  
(800) 633-8253

SUPPLIER: **INERGY SERVICES LLC**

DESTINATION:

CONSIGNEE:

**I.B.G. Brandenburg, KY.**  
3340 Rv Pass Road  
Brandenburg, KY 00001

**I.B.G. Brandenburg, KY.**  
3340 Rv Pass Road  
Brandenburg, KY 00001

PRODUCT DESCRIPTION & CLASS	DATE: 08/29/2012	TIME IN: 3:03:36PM	TIME OUT: 3:20:22PM
-----------------------------	------------------	--------------------	---------------------

GRAVITY	FACTOR	NET GALLONS
---------	--------	-------------

1 CARGO TANK

1.503

4.19

9,446

LIQUEFIED PETROLEUM GAS  
2.1 UN 1075  
NON CORROSIVE

3% Start

62% End

ORDER #

WATER CAPACITY 11,600	% FILLED 81%	GROSS WT. 79,800	TARE WT. 40,220	NET WT. 39,580
--------------------------	-----------------	---------------------	--------------------	-------------------

The product loaded hereon has been odorized in the amount of 1.41 pounds of ethyl mercaptan.

"This is to certify that the above named materials are properly classified, described, packaged, marked and labeled, and are in proper condition for transportation, according to the applicable regulations of the Department of Transportation"

SNIFF TEST PERFORMED

ORDER CHECKED BY: **John Wetzel**

RECEIVED FOR DELIVERY BY: *Kyle Groves*

CARRIER: **Pipeline Transport**

DRIVER NAME: **Kyle Groves**

TRAILER NO: **5**

CUSTOMER COPY

**ENERGY SERVICES, LLC**  
**SEYMOUR TERMINAL**  
 10523 E. Co. Rd. 975 N. • Seymour, IN 47274  
 (812) 445-3404

TRUCK MANIFEST #: **10022275**

**STRAIGHT BILL OF LADING**

**EMERGENCY RESPONSE**

CUSTOMER:

**ENERGY - Wholesale**  
 10523 East County Road 975 North  
 Seymour, IN 47274  
 812-445-3404

FOR CHEMICAL EMERGENCY  
 SPIEL, LEAK, FIRE, EXPOSURE, OR ACCIDENT  
 Call PERS - 24 Hours  
 (800) 633-8253

SUPPLIER: **ENERGY SERVICES LLC**

DESTINATION:

**I.B.G. Brandenburg, KY.**  
 3340 Rv Pass Road  
 Brandenburg, KY 00001

CONSIGNEE:

**I.B.G. Brandenburg, KY.**  
 3340 Rv Pass Road  
 Brandenburg, KY 00001

PRODUCT DESCRIPTION & CLASS	DATE: <b>09/30/2012</b>	TIME IN: <b>3:17:13PM</b>	TIME OUT: <b>3:36:00PM</b>
-----------------------------	-------------------------	---------------------------	----------------------------

GRAVITY	FACTOR	NET GALLONS
<b>0.503</b>	<b>4.19</b>	<b>9,165</b>

**1 CARGO TANK**

**LIQUEFIED PETROLEUM GAS**  
**2.1 UN 1075**  
**NON CORROSIVE**

ORDER #

WATER CAPACITY <b>10,500</b>	% FILLED <b>87%</b>	GROSS WT. <b>79,780</b>	TARE WT. <b>41,380</b>	NET WT. <b>38,400</b>
---------------------------------	------------------------	----------------------------	---------------------------	--------------------------

The product loaded hereon has been odorized in the amount of 1.37 pounds of ethyl mercaptan.

"This is to certify that the above named materials are properly classified, described, packaged, marked and labeled, and are in proper condition for transportation, according to the applicable regulations of the Department of Transportation"

SNIFF TEST PERFORMED

ORDER CHECKED BY:

**John Wetzel**

RECEIVED FOR DELIVERY BY:

*Knox Napier*

CARRIER: **T&T Trans. LLC**

DRIVER NAME: **Knox Napier**

TRAILER NO: **1624**

**ENERGY SERVICES, LLC**  
**SEYMOUR TERMINAL**  
 10523 E. Co. Rd. 975 N. • Seymour, IN 47274  
 (812) 445-3404

TRUCK MANIFEST #: 10022345

**STRAIGHT BILL OF LADING**

**EMERGENCY RESPONSE**

FOR CHEMICAL EMERGENCY  
 SPILL, LEAK, FIRE, EXPOSURE, OR ACCIDENT  
 Call PERS - 24 Hours  
 (800) 633-8253

**CUSTOMER:**

**ENERGY - Wholesale**  
 10523 East County Road 975 North  
 Seymour, IN 47274  
 812-445-3404

**SUPPLIER: ENERGY SERVICES LLC**

**CONSIGNEE:**

**I.B.G. - Elizabethtown Ky.**

**DESTINATION:**

**I.B.G. - Elizabethtown Ky.**

**Elizabethtown, KY 00000**

**Elizabethtown, KY 00000**

<b>PRODUCT DESCRIPTION &amp; CLASS</b>	<b>DATE:</b> 10/20/2012	<b>TIME IN:</b> 10:03:37AM	<b>TIME OUT:</b> 10:20:47AM
	<b>GRAVITY</b> 0.503	<b>FACTOR</b> 4.10	<b>NET GALLONS @60F</b> 9.265

**LOADING TANK**

**LIQUEFIED PETROLEUM GAS**  
 2.1 UN 1075  
 NON CORROSIVE

<b>WATER CAPACITY</b> 10,500	<b>% FILLED</b> 88%	<b>GROSS WT.</b> 79,800	<b>TARE WT.</b> 40,980	<b>NET WT.</b> 38,820
------------------------------	---------------------	-------------------------	------------------------	-----------------------

The product loaded hereon has been odorized in the amount of 1.39 pounds of ethyl mercaptan.

This is to certify that the above named materials are properly classified, described, packaged, marked and labeled, and are in proper condition for transportation, according to the applicable regulations of the Department of Transportation.

SNIFF TEST PERFORMED

RECEIVED FOR DELIVERY BY:

*Knox Napier*

ORDER CHECKED BY: **John Wetzel**

DRIVER NAME: **Knox Napier**

TRAILER NO: 1624

CARRIER: **Trans. I.I.C.**

CUSTOMER COPY

**ENERGY SERVICES, LLC**  
**SEYMOUR TERMINAL**  
 10523 E. Co. Rd. 975 N. • Seymour, IN 47274  
 (812) 445-3404

TRUCK MANIFEST #: 10022433

<b>STRAIGHT BILL OF LADING</b>	<b>EMERGENCY RESPONSE</b>
<b>CUSTOMER:</b> INERGY - Wholesale 10523 East County Road 975 North Seymour, IN 47274 812-445-3404	FOR CHEMICAL EMERGENCY SPILL, LEAK, FIRE, EXPOSURE, OR ACCIDENT Call PERS - 24 Hours (800) 633-8253
	<b>SUPPLIER: INERGY SERVICES LLC</b>

<b>DESTINATION:</b> I.B.G. - Elizabethtown Ky. Elizabethtown, KY 00000	<b>CONSIGNEE:</b> I.B.G. - Elizabethtown Ky. Elizabethtown, KY 00000
--	--

<b>PRODUCT DESCRIPTION &amp; CLASS</b>	<b>DATE:</b> 11/09/2012	<b>TIME IN:</b> 4:08:41AM	<b>TIME OUT:</b> 4:21:26AM
--	-------------------------	---------------------------	----------------------------

	<b>GRAVITY</b>	<b>FACTOR</b>	<b>NET GALLONS @60F</b>
<b>1 CARGO TANK</b>	0.503	4.19	9,131

**LIQUEFIED PETROLEUM GAS**  
 2.1 UN 1075  
 NON CORROSIVE

<b>ORDER #</b>				
<b>WATER CAPACITY</b> 11,600	<b>% FILLED</b> 79%	<b>GROSS WT.</b> 79,820	<b>TARE WT.</b> 41,560	<b>NET WT.</b> 38,260

The product loaded hereon has been odorized in the amount of 1.37 <sup>WST</sup> pounds of ethyl mercaptan.

"This is to certify that the above named materials are properly classified, described, packaged, marked and labeled, and are in proper condition for transportation, according to the applicable regulations of the Department of Transportation"

SNIFF TEST PERFORMED

ORDER CHECKED BY: **John Wetzel**

RECEIVED FOR DELIVERY BY: *William E. Taylor*

<b>CARRIER:</b> T&T Trans. LLC	<b>DRIVER NAME:</b> William Taylor	<b>TRAILER NO.:</b> 1605
-----------------------------------	---------------------------------------	-----------------------------



**ENERGY SERVICES, LLC**  
**SEYMOUR TERMINAL**

10523 E. Co. Rd. 975 N. • Seymour, IN 47274  
(812) 445-3404

TRUCK MANIFEST #: 10022421

**STRAIGHT BILL OF LADING**

**EMERGENCY RESPONSE**

FOR CHEMICAL EMERGENCY  
SPILL, LEAK, FIRE, EXPOSURE, OR ACCIDENT  
Call PERS - 24 Hours  
(800) 633-8253

**CUSTOMER:**

ENERGY - Wholesale  
10523 East County Road 975 North  
Seymour, IN 47274  
812-445-3404

SUPPLIER: **ENERGY SERVICES LLC**

**DESTINATION:**

I.B.G. - Irvington Ky.  
Irvington, KY 00000

**CONSIGNEE:**

I.B.G. - Irvington Ky.  
Irvington, KY 00000

PRODUCT DESCRIPTION & CLASS	DATE	TIME IN	TIME OUT	GRAVITY	FACTOR	NET GALLONS @60F
	11/08/2012	8:23:05AM	8:36:16AM	0.503	4.19	9,093

1 CARGO TANK  
LIQUEFIED PETROLEUM GAS  
2.1 UN 1075  
NON CORROSIVE

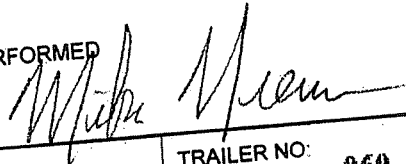
WATER CAPACITY	% FILLED	GROSS WT.	TARE WT.	NET WT.
10,601	86%	79,820	41,720	38,100

The product loaded hereon has been odorized in the amount of 1.36 pounds of ethyl mercaptan.

"This is to certify that the above named materials are properly classified, described, packaged, marked and labeled, and are in proper condition for transportation, according to the applicable regulations of the Department of Transportation"

SNIFF TEST PERFORMED

RECEIVED FOR DELIVERY BY:



ORDER CHECKED BY: **John Wetzel**

DRIVER NAME: **Michael Nieman**

TRAILER NO: **060**

CARRIER: **Wischmeier Trucking Inc.**



00.  
00.  
00.  
00.  
00.  
00.

**ENERGY SERVICES, LLC**  
**SEYMOUR TERMINAL**  
 10523 E. Co. Rd. 975 N. • Seymour, IN 47274  
 (812) 445-3404

TRUCK MANIFEST #: **10022425**

<b>STRAIGHT BILL OF LADING</b>	<b>EMERGENCY RESPONSE</b>
<b>CUSTOMER:</b>  <b>INERGY - Wholesale</b> <b>10523 East County Road 975 North</b> <b>Seymour, IN 47274</b> <b>812-445-3404</b>	<b>FOR CHEMICAL EMERGENCY</b> SPILL, LEAK, FIRE, EXPOSURE, OR ACCIDENT Call PERS - 24 Hours (800) 633-8253
	<b>SUPPLIER: INERGY SERVICES LLC</b>

<b>DESTINATION:</b>  <b>I.B.G. Brandenburg, KY.</b> <b>3340 Rv Pass Road</b> <b>Brandenburg, KY 00001</b>	<b>CONSIGNEE:</b>  <b>I.B.G. Brandenburg, KY.</b> <b>3340 Rv Pass Road</b> <b>Brandenburg, KY 00001</b>
---	---

<b>PRODUCT DESCRIPTION &amp; CLASS</b>	<b>DATE:</b> 11/08/2012	<b>TIME IN:</b> 1:25:24PM	<b>TIME OUT:</b> 1:40:05PM
--	-------------------------	---------------------------	----------------------------

	<b>GRAVITY</b>	<b>FACTOR</b>	<b>NET GALLONS @60F</b>
<b>1 CARGO TANK</b>	0.503	4.19	9,208

**LIQUEFIED PETROLEUM GAS**  
**2.1 UN 1075**  
**NON CORROSIVE**

<b>ORDER #</b>
----------------

<b>WATER CAPACITY</b> 10,601	<b>% FILLED</b> 87%	<b>GROSS WT.</b> 79,800	<b>TARE WT.</b> 41,220	<b>NET WT.</b> 38,580
---------------------------------	------------------------	----------------------------	---------------------------	--------------------------

The product loaded hereon has been odorized in the amount of 1.38 pounds of ethyl mercaptan.

"This is to certify that the above named materials are properly classified, described, packaged, marked and labeled, and are in proper condition for transportation, according to the applicable regulations of the Department of Transportation"

SNIFF TEST PERFORMED

ORDER CHECKED BY: **John Wetzel**

RECEIVED FOR DELIVERY BY: *Michael Nieman*

<b>CARRIER:</b> Wischmeier Trucking Inc.	<b>DRIVER NAME:</b> Michael Nieman	<b>TRAILER NO:</b> 060
---	---------------------------------------	---------------------------

**IRVING SERVICES, LLC**  
**FOUR TERMINAL**  
 E. Co. Rd. 975 N. • Seymour, IN 47274  
 (812) 445-3404

TRUCK MANIFEST #: 10022456

<b>STRAIGHT BILL OF LADING</b>	<b>EMERGENCY RESPONSE</b>
--------------------------------	---------------------------

**CUSTOMER:**

**INERGY - Wholesale**  
 10523 East County Road 975 North  
 Seymour, IN 47274  
 812-445-3404

FOR CHEMICAL EMERGENCY  
 SPILL, LEAK, FIRE, EXPOSURE, OR ACCIDENT  
 Call PERS - 24 Hours  
 (800) 633-8253

SUPPLIER: **INERGY SERVICES LLC**

**DESTINATION:**

**I.B.G.- Irvington Ky.**  
  
**Irvington, KY 00000**

**CONSIGNEE:**

**I.B.G.- Irvington Ky.**  
  
**Irvington, KY 00000**

<b>PRODUCT DESCRIPTION &amp; CLASS</b>	<b>DATE:</b> 11/12/2012	<b>TIME IN:</b> 12:26:28PM	<b>TIME OUT:</b> 12:40:11PM
--	-------------------------	----------------------------	-----------------------------

**1 CARGO TANK**

**LIQUEFIED PETROLEUM GAS**  
**2.1 UN 1075**  
**NON CORROSIVE**

GRAVITY	FACTOR	NET GALLONS @60F
0.503	4.19	9,222

Start 9 0 10 5 3  
 End 0 26 25 12

ORDER #

<b>WATER CAPACITY</b> 10,600	<b>% FILLED</b> 87%	<b>GROSS WT.</b> 79,960	<b>TARE WT.</b> 41,320	<b>NET WT.</b> 38,640
---------------------------------	------------------------	----------------------------	---------------------------	--------------------------

The product loaded hereon has been odorized in the amount of 1.38 pounds of ethyl mercaptan.

"This is to certify that the above named materials are properly classified, described, packaged, marked and labeled, and are in proper condition for transportation, according to the applicable regulations of the Department of Transportation"

SNIFF TEST PERFORMED

ORDER CHECKED BY: **John Wetzel**

RECEIVED FOR DELIVERY BY: *James Maxie*

CARRIER: **Wischnieter Trucking Inc.**

DRIVER NAME: **James Maxie**

TRAILER NO: **049**

**OUR TERMINAL**  
 Co. Rd. 975 N. • Seymour, IN 47274  
 (812) 445-3404

TRUCK MANIFEST #: 10022465

**STRAIGHT BILL OF LADING**

**EMERGENCY RESPONSE**

FOR CHEMICAL EMERGENCY  
 SPILL, LEAK, FIRE, EXPOSURE, OR ACCIDENT  
 Call PERS - 24 Hours  
 (800) 633-8253

**CUSTOMER:**

**ENERGY - Wholesale**  
 10523 East County Road 975 North  
 Seymour, IN 47274  
 812-445-3404

**SUPPLIER: INERGY SERVICES LLC**

**DESTINATION:**

**I.B.G. Brandenburg, KY.**  
 3340 Rv Pass Road  
 Brandenburg, KY 00001

**CONSIGNEE:**

**I.B.G. Brandenburg, KY.**  
 3340 Rv Pass Road  
 Brandenburg, KY 00001

<b>PRODUCT DESCRIPTION &amp; CLASS</b>	<b>DATE:</b> 11/13/2012	<b>TIME IN:</b> 8:18:27AM	<b>TIME OUT:</b> 8:31:54AM
	<b>GRAVITY</b>	<b>FACTOR</b>	<b>NET GALLONS @60F</b>
	0.503	4.19	9,327

**1 CARGO TANK**

**LIQUEFIED PETROLEUM GAS**  
 2.1 UN 1075  
 NON CORROSIVE

<b>WATER CAPACITY</b> 11,600		<b>% FILLED</b> 80%	<b>GROSS WT.</b> 79,900	<b>TARE WT.</b> 40,820	<b>NET WT.</b> 39,080
The product loaded hereon has been odorized in the amount of <u>1.40</u> <sup>WST</sup> pounds of ethyl mercaptan.					
*This is to certify that the above named materials are properly classified, described, packaged, marked and labeled, and are in proper condition for transportation, according to the applicable regulations of the Department of Transportation*					
<b>ORDER CHECKED BY:</b> John Wetzel		<input checked="" type="checkbox"/> <b>SNIFF TEST PERFORMED</b>			
<b>CARRIER:</b> T&T Trans. LLC		<b>DRIVER NAME:</b> William Taylor		<b>RECEIVED FOR DELIVERY BY:</b> <i>[Signature]</i>	
				<b>TRAILER NO:</b> 1605	

CUSTOMER COPY

**INERGY SERVICES, LLC**  
**SEYMOUR TERMINAL**  
 10523 E. Co. Rd. 975 N. • Seymour, IN 47274  
 (812) 445-3404

TRUCK MANIFEST #: **10022459**

**STRAIGHT BILL OF LADING**

**EMERGENCY RESPONSE**

FOR CHEMICAL EMERGENCY  
 SPILL, LEAK, FIRE, EXPOSURE, OR ACCIDENT  
 Call PERS - 24 Hours  
 (800) 633-8253

**CUSTOMER:**

**INERGY - Wholesale**  
 10523 East County Road 975 North  
 Seymour, IN 47274  
 812-445-3404

SUPPLIER: **INERGY SERVICES LLC**

**DESTINATION:**

**L.B.G. - Elizabethtown Ky.**  
 Elizabethtown, KY 00000

**CONSIGNEE:**

**L.B.G. - Elizabethtown Ky.**  
 Elizabethtown, KY 00000

<b>PRODUCT DESCRIPTION &amp; CLASS</b>	<b>DATE:</b> 11/12/2012	<b>TIME IN:</b> 6:16:38PM	<b>TIME OUT:</b> 6:30:33PM
	<b>GRAVITY</b>	<b>FACTOR</b>	<b>NET GALLONS @80F</b>
	0.503	4.19	9,160

**1 CARGO TANK**  
**LIQUEFIED PETROLEUM GAS**  
 2.1 UN 1075  
 NON CORROSIVE

<b>ORDER #</b>			
<b>WATER CAPACITY</b> 10,500	<b>% FILLED</b> 87%	<b>GROSS WT.</b> 79,920	<b>TARE WT.</b> 41,540
			<b>NET WT.</b> 38,380

The product loaded hereon has been odorized in the amount of 1.37 pounds of ethyl mercaptan.

"This is to certify that the above named materials are properly classified, described, packaged, marked and labeled, and are in proper condition for transportation, according to the applicable regulations of the Department of Transportation"

SNIFF TEST PERFORMED

ORDER CHECKED BY: **John Wetzel**

RECEIVED FOR DELIVERY BY:

*Darrell Jordan*

CARRIER: **T&T Trans. LLC**

DRIVER NAME: **Darrell W Jordan**

TRAILER NO: **1613**

**INERGY SERVICES, LLC**  
**SEYMOUR TERMINAL**  
 10523 E. Co. Rd. 975 N. • Seymour, IN 47274  
 (812) 445-3404

TRUCK MANIFEST #: 10022440

**STRAIGHT BILL OF LADING** **EMERGENCY RESPONSE**

**CUSTOMER:**  
**INERGY - Wholesale**  
 10523 East County Road 975 North  
 Seymour, IN 47274  
 812-445-3404

FOR CHEMICAL EMERGENCY  
 SPILL, LEAK, FIRE, EXPOSURE, OR ACCIDENT  
 Call PERS - 24 Hours  
 (800) 633-8253

**SUPPLIER: INERGY SERVICES LLC**

**DESTINATION:**  
 I.B.G.- Irvington Ky.  
 Irvington, KY 00000

**CONSIGNEE:**  
 I.B.G.- Irvington Ky.  
 Irvington, KY 00000

<b>PRODUCT DESCRIPTION &amp; CLASS</b>	<b>DATE:</b> 11/09/2012	<b>TIME IN:</b> 12:10:18PM	<b>TIME OUT:</b> 12:27:15PM
--	-------------------------	----------------------------	-----------------------------

<b>GRAVITY</b>	<b>FACTOR</b>	<b>NET GALLONS @80F</b>
0.503	4.19	9,208

**1 CARGO TANK**  
**LIQUEFIED PETROLEUM GAS**  
 2.1 UN 1075  
 NON CORROSIVE

<b>ORDER #</b>				
<b>WATER CAPACITY</b> 10,500	<b>% FILLED</b> 88%	<b>GROSS WT.</b> 79,840	<b>TARE WT.</b> 41,260	<b>NET WT.</b> 38,580

The product loaded hereon has been odorized in the amount of 1.38 pounds of ethyl mercaptan.

"This is to certify that the above named materials are properly classified, described, packaged, marked and labeled, and are in proper condition for transportation, according to the applicable regulations of the Department of Transportation"

SNIFF TEST PERFORMED

**ORDER CHECKED BY:** John Wetzel

**RECEIVED FOR DELIVERY BY:** *Knox Napier*

**CARRIER:** T&T Trans. I.I.C.

**DRIVER NAME:** Knox Napier

**TRAILER NO:** 1624

# ENERGY SERVICES, LLC

## SEYMOUR TERMINAL

10523 E. Co. Rd. 975 N. • Seymour, IN 47274

(812) 445-3404

TRUCK MANIFEST #: 10022472

STRAIGHT BILL OF LADING	EMERGENCY RESPONSE
-------------------------	--------------------

**CUSTOMER:**

**ENERGY - Wholesale**  
10523 East County Road 975 North  
Seymour, IN 47274  
812-445-3404

**FOR CHEMICAL EMERGENCY**  
SPILL, LEAK, FIRE, EXPOSURE, OR ACCIDENT  
Call PERS - 24 Hours  
(800) 633-8253

**SUPPLIER: ENERGY SERVICES LLC**

**DESTINATION:**

**I.B.G. - Irvington Ky.**  
**Irvington, KY 00000**

**CONSIGNEE:**

**I.B.G. - Irvington Ky.**  
**Irvington, KY 00000**

<b>PRODUCT DESCRIPTION &amp; CLASS</b>	<b>DATE:</b> 11/13/2012	<b>TIME IN:</b> 2:13:51PM	<b>TIME OUT:</b> 2:28:14PM
--	-------------------------	---------------------------	----------------------------

<b>GRAVITY</b>	<b>FACTOR</b>	<b>NET GALLONS @60F</b>
0.503	4.19	9,189

**1 CARGO TANK**

**LIQUEFIED PETROLEUM GAS**  
**2.1 UN 1075**  
**NON CORROSIVE**

ORDER #

<b>WATER CAPACITY</b> 11,100	<b>% FILLED</b> 83%	<b>GROSS WT.</b> 79,860	<b>TARE WT.</b> 41,360	<b>NET WT.</b> 38,500
---------------------------------	------------------------	----------------------------	---------------------------	--------------------------

The product loaded hereon has been odorized in the amount of 1.38 pounds of ethyl mercaptan.

"This is to certify that the above named materials are properly classified, described, packaged, marked and labeled, and are in proper condition for transportation, according to the applicable regulations of the Department of Transportation"

SNIFF TEST PERFORMED

ORDER CHECKED BY: **John Wetzel**

RECEIVED FOR DELIVERY BY: *William Myska*

CARRIER: **Trans. LLC**

DRIVER NAME: **William Myska**

TRAILER NO: **1237**

CUSTOMER COPY

ENERGY SERVICES, LLC

SEYMOUR TERMINAL

10523 E. Co. Rd. 975 N. • Seymour, IN 47274

(812) 445-3404

TRUCK MANIFEST #: 10022467

STRAIGHT BILL OF LADING      EMERGENCY RESPONSE

CUSTOMER:

ENERGY - Wholesale  
10523 East County Road 975 North  
Seymour, IN 47274  
812-445-3404

FOR CHEMICAL EMERGENCY  
SPILL, LEAK, FIRE, EXPOSURE, OR ACCIDENT  
Call PERS - 24 Hours  
(800) 633-8253

SUPPLIER: ENERGY SERVICES LLC

DESTINATION:

I.B.G.- Irvington Ky.  
Irvington, KY 00000

CONSIGNEE:

I.B.G.- Irvington Ky.  
Irvington, KY 00000

PRODUCT DESCRIPTION & CLASS	DATE: 11/13/2012	TIME IN: 9:02:50AM	TIME OUT: 9:18:48AM
-----------------------------	------------------	--------------------	---------------------

	GRAVITY	FACTOR	NET GALLONS @60F
1 CARGO TANK	0.503	4.19	9,155

LIQUEFIED PETROLEUM GAS  
2.1 UN 1075  
NON CORROSIVE

ORDER #

WATER CAPACITY 10,500	% FILLED 87%	GROSS WT. 79,740	TARE WT. 41,380	NET WT. 38,360
--------------------------	-----------------	---------------------	--------------------	-------------------

The product loaded hereon has been odorized in the amount of 1.37 pounds of ethyl mercaptan.

"This is to certify that the above named materials are properly classified, described, packaged, marked and labeled, and are in proper condition for transportation, according to the applicable regulations of the Department of Transportation"

SNIFF TEST PERFORMED

ORDER CHECKED BY: John Wetzel

RECEIVED FOR DELIVERY BY: *[Signature]*

CARRIER: T&I Trans. LLC

DRIVER NAME: Knox Napier

TRAILER NO: 1624

IRVINGTON GAS CO.  
270-547-2455 & 270-877-2661  
PO BOX 55  
IRVINGTON, KY 40146

BRIGHT SIDE COMMUNITY  
C/O: EDDIE HOWARD  
59 DAWSON RD  
RADCLIFF, KY 4016095025

DATE 01/16/12 11:16:49  
ACCOUNT # BRISID01  
REFERENCE 32953  
DRIVER # 204  
TRUCK UNIT ID 6  
SALE # 2815 DATE 01/16/12 12:12:56  
COUNT: START 0.0 END 2217.5  
NET DELIVERY 2217.5 GALLONS  
1075 PREMIUM PROPANE LPG 1

\*\* DUPLICATE TICKET \*\*

TANK 29118 PERCENT FULL 80%  
STORAGE TANK GAS FOR MTR  
HAZMAT CHARGE \$ 3.17  
State Sales : 6.000% \$ 0.19  
DELIVERY TOTAL DUE \$ 3.36  
PREVIOUS BALANCE \$ 0.00  
TOTAL DUE \$ 3.36

\*\*PAY ONLINE AT IRVINGTONGAS.COM\*\*

LONGITUDE -85.911678  
LATITUDE 37.766788

1



IRVINGTON GAS CO.  
270-547-2455 & 270-877-2661  
PO BOX 55  
IRVINGTON, KY 40146

BRIGET SIDE COMMUNITY  
C/O: EDDIE HOWARD  
59 DAWSON RD  
RADCLIFF, KY 401695025

DATE 01/26/12 14:47:00  
ACCOUNT # BRISID01  
REFERENCE 15508  
DRIVER # 007  
TRUCK UNIT ID 2  
SALE # 5190 DATE 01/26/12 15:12:19  
COUNT: START 0.0 END 819.9  
NET DELIVERY 819.9 GALLONS  
1075 PREMIUM PROPANE LPG 1

\*\* DUPLICATE TICKET \*\*

TANK 29118 PERCENT FULL 80%  
STORAGE TANK GAS FOR MTR  
HAZMAT CHARGE \$ 3.17  
State Sales : 6.000% \$ 0.19  
DELIVERY TOTAL DUE \$ 3.36  
PREVIOUS BALANCE \$ 0.00  
TOTAL DUE \$ 3.36

\*\*DAY ONLINE AT IRVINGTONGAS.COM\*\*

LONGITUDE -85.911712  
LATITUDE 37.766842

1

IRVINGTON GAS CO.  
270-547-2455 & 270-877-2661  
PO BOX 55  
IRVINGTON, KY 40146

BRIGHT SIDE COMMUNITY  
C/O: EDDIE HOWARD  
59 DAWSON RD  
RADCLIFF, KY 4016095025

DATE 02/06/12 14:23:52  
ACCOUNT # BRISID01  
REFERENCE 24014  
DRIVER # 950  
TRUCK UNIT ID 7  
SALE # 3847 DATE 02/06/12 15:00:38  
COUNT: START 0.0 END 1626.0  
NET DELIVERY 1626.0 GALLONS  
1075 PREMIUM PROPANE LPG 1

\*\* DUPLICATE TICKET \*\*

TANK 29118 PERCENT FULL 80%  
STORAGE TANK GAS FOR MTR  
HAZMAT CHARGE \$ 3.17  
State Sales : 6.000% \$ 0.19  
DELIVERY TOTAL DUE \$ 3.36  
PREVIOUS BALANCE \$ 0.00  
TOTAL DUE \$ 3.36

\*\*PAY ONLINE AT IRVINGTONGAS.COM\*\*

LONGITUDE -85.912143  
LATITUDE 37.768262

1

IRVINGTON GAS CO.  
270-547-2455 & 270-877-2661  
PO BOX 55  
IRVINGTON, KY 40146

BRIGHT SIDE COMMUNITY  
C/O: EDDIE HOWARD  
59 DAWSON RD  
RADCLIFF, KY 4016095025

DATE 02/06/12 14:23:52  
ACCOUNT # BRISID01  
REFERENCE 24014  
DRIVER # 950  
TRUCK UNIT ID 7  
SALE # 3847 DATE 02/06/12 15:00:38  
COUNT: START 0.0 END 1626.0  
NET DELIVERY 1626.0 GALLONS  
1075 PREMIUM PROPANE LPG 1

\*\* DUPLICATE TICKET \*\*

TANK 29118 PERCENT FULL 80%  
STORAGE TANK GAS FOR MTR  
HAZMAT CHARGE \$ 3.17  
State Sales : 6.000% \$ 0.19  
DELIVERY TOTAL DUE \$ 3.36  
PREVIOUS BALANCE \$ 0.00  
TOTAL DUE \$ 3.36

\*\*PAY ONLINE AT IRVINGTONGAS.COM\*\*

LONGITUDE -85.912143  
LATITUDE 37.768262

1

IRVINGTON GAS CO.  
270-547-2455 & 270-877-2661  
PO BOX 55  
IRVINGTON, KY 40146

BRIGHT SIDE COMMUNITY  
C/O: EDDIE HOWARD  
59 DAWSON RD  
RADCLIFF, KY 4016095025

DATE 02/23/12 13:14:45  
ACCOUNT # BRISID01  
REFERENCE 33603  
DRIVER # 204  
TRUCK UNIT ID 6  
SALE # 3432 DATE 02/23/12 13:52:37  
COUNT: START 0.0 END 1812.3  
NET DELIVERY 1812.3 GALLONS  
1075 PREMIUM PROPANE LPG 1

\*\* DUPLICATE TICKET \*\*

TANK 29118 PERCENT FULL 80%  
STORAGE TANK GAS FOR MTR  
HAZMAT CHARGE \$ 3.17  
State Sales : 6.000% \$ 0.19  
DELIVERY TOTAL DUE \$ 3.36  
PREVIOUS BALANCE \$ 0.00  
TOTAL DUE \$ 3.36

\*\*PAY ONLINE AT IRVINGTONGAS.COM\*\*

LONGITUDE -85.912448  
LATITUDE 37.768340

1

IRVINGTON GAS CO.  
270-547-2455 & 270-877-2661  
PO BOX 55  
IRVINGTON, KY 40146

BRIGET SIDE COMMUNITY  
C/O: EDDIE HOWARD  
59 DAWSON RD  
RADCLIFF, KY 4016095025

DATE 03/12/12 13:19:13  
ACCOUNT # BRISID01  
REFERENCE 33663  
DRIVER # 204  
TRUCK UNIT ID 6  
SALE # 3488 DATE 03/12/12 13:40:27  
COUNT: START 0.0 END 601.9  
NET DELIVERY 601.9 GALLONS  
1075 PREMIUM PROPANE LPG 1

\*\* DUPLICATE TICKET \*\*

TANK 29118 PERCENT FULL 50%  
STORAGE TANK GAS FOR MTR  
HAZMAT CHARGE \$ 3.17  
State Sales : 6.000% \$ 0.19  
DELIVERY TOTAL DUE \$ 3.36  
PREVIOUS BALANCE \$ 0.00  
TOTAL DUE \$ 3.36

\*\*PAY ONLINE AT IRVINGGAS.COM\*\*

LONGITUDE -85.913022  
LATITUDE 37.768340

1

IRVINGTON GAS CO.  
270-547-2455 & 270-877-2661  
PO BOX 55  
IRVINGTON, KY 40146

BRIGHT SIDE COMMUNITY  
C/O: EDDIE HOWARD  
59 DAWSON RD  
RADCLIFF, KY 4016095025

DATE 04/27/12 14:22:41  
ACCOUNT # BRISID01  
REFERENCE 16133  
DRIVER # 007  
TRUCK UNIT ID 2  
SALE # 5778 DATE 04/27/12 16:02:43  
COUNT: START 0.0 END 2909.2  
NET DELIVERY 2909.2 GALLONS  
1075 PREMIUM PROPANE LPG 1

\*\* DUPLICATE TICKET \*\*

TANK 29118 PERCENT FULL 80%  
STORAGE TANK GAS FOR MTR  
HAZMAT CHARGE \$ 3.17  
State Sales : 6.000% \$ 0.19  
DELIVERY TOTAL DUE \$ 3.36  
PREVIOUS BALANCE \$ 0.00  
TOTAL DUE \$ 3.36

\*\*PAY ONLINE AT IRVINGTONGAS.COM\*\*

LONGITUDE -85.912098  
LATITUDE 37.768253

1

IRVINGTON GAS CO.  
270-547-2455 & 270-877-2661  
PO BOX 55  
IRVINGTON, KY 40146

BRIGHT SIDE COMMUNITY  
C/O: EDDIE HOWARD  
59 DAWSON RD  
RADCLIFF, KY 4016095025

DATE 08/29/12 09:26:48  
ACCOUNT # BRISID01  
REFERENCE 404  
DRIVER # 204  
TRUCK UNIT ID 6  
SALE # 3921 DATE 08/29/12 10:26:59  
COUNT: START 0.0 END 2372.9  
NET DELIVERY 2372.9 GALLONS  
1075 PREMIUM PROPANE LPG 1

\*\* DUPLICATE TICKET \*\*

TANK 29118 PERCENT FULL 80%  
STORAGE TANK GAS FOR MTR  
HAZMAT CHARGE \$ 3.17  
State Sales : 6.000% \$ 0.19  
DELIVERY TOTAL DUE \$ 3.36  
PREVIOUS BALANCE \$ 0.00  
TOTAL DUE \$ 3.36

\*\*PAY ONLINE AT IRVINGTONGAS.COM\*\*

LONGITUDE -85.911163  
LATITUDE 37.766782

|

IRVINGTON GAS CO.  
270-547-2455 & 270-877-2661  
PO BOX 55  
IRVINGTON, KY 40146

BRIGHT SIDE COMMUNITY  
C/O: EDDIE HOWARD  
59 DAWSON RD  
RADCLIFF, KY 4016095025

DATE 11/01/12 12:59:58  
ACCOUNT # BRISID01  
REFERENCE 975  
DRIVER # 204  
TRUCK UNIT ID 6  
SALE # 4478 DATE 11/01/12 13:59:37  
COUNT: START 0.0 END 2293.6  
NET DELIVERY 2293.6 GALLONS  
1075 PREMIUM PROPANE LPG 1

\*\* DUPLICATE TICKET \*\*

TANK 29118 PERCENT FULL 80%  
STORAGE TANK GAS FOR MER  
HAZMAT CHARGE \$ 3.17  
State Sales : 6.000% \$ 0.19  
DELIVERY TOTAL DUE \$ 3.36  
PREVIOUS BALANCE \$ 0.00  
TOTAL DUE \$ 3.36

\*\*PAY ONLINE AT IRVINGONGAS.COM\*\*

LONGITUDE -85.911240  
LATITUDE 37.766748

!



IRVINGTON GAS CO.  
270-547-2455 & 270-877-2661  
PO BOX 55  
IRVINGTON, KY 40146

BRIGHT SIDE COMMUNITY  
C/O: EDDIE HOWARD  
59 DAWSON RD  
RADCLIFF, KY 4016095025

DATE 11/27/12 10:27:53  
ACCOUNT # BRISID01  
REFERENCE 17526  
DRIVER # 007  
TRUCK UNIT ID 2  
SALE # 7098 DATE 11/27/12 12:16:48  
COUNT: START 0.0 END 2379.1  
NET DELIVERY 2379.1 GALLONS  
1075 PREMIUM PROPANE LPG 1

\*\* DUPLICATE TICKET \*\*

TANK 29118 PERCENT FULL 80%  
STORAGE TANK GAS FOR MTR  
HAZMAT CHARGE \$ 3.17  
State Sales : 6.000% \$ 0.19  
DELIVERY TOTAL DUE \$ 3.36  
PREVIOUS BALANCE \$ 0.00  
TOTAL DUE \$ 3.36

\*\*PAY ONLINE AT IRVINGTONGAS.COM\*\*

LONGITUDE -85.912133  
LATITUDE 37.768248

|

IRVINGTON GAS CO.  
270-547-2455 & 270-877-2661  
PO BOX 55  
IRVINGTON, KY 40146

THE ORCHARD  
SAINT JOHN'S ROAD  
ELIZABETHTOWN, KY 42701

DATE 07/16/12 09:57:52  
ACCOUNT # ORCTHE01  
REFERENCE 16316  
DRIVER # 007  
TRUCK UNIT ID 2  
SALE # 5951 DATE 07/16/12 10:08:54  
COUNT: START 0.0 END 478.1  
NET DELIVERY 478.1 GALLONS  
1075 PREMIUM PROPANE LPG 1

\*\* DUPLICATE TICKET \*\*

TANK ORCHARD PERCENT FULL 80%

Residential Propane

HAZMAT CHARGE	\$	0.00
DELIVERY TOTAL DUE	\$	0.00
PREVIOUS BALANCE	\$	0.00
TOTAL DUE	\$	0.00

\*\*PAY ONLINE AT IRVINGTONGAS.COM\*\*

LONGITUDE -85.942085  
LATITUDE 37.698865

!

IRVINGTON GAS CO.  
270-547-2455 & 270-877-2661  
PO BOX 55  
IRVINGTON, KY 40146

BRIGHT SIDE COMMUNITY  
C/O: EDDIE HOWARD  
59 DAWSON RD  
RADCLIFF, KY 4016095025

DATE 12/14/12 15:33:22  
ACCOUNT # BRISID01  
REFERENCE 17794  
DRIVER # 007  
TRUCK UNIT ID 2  
SALE # 7356 DATE 12/14/12 16:12:24  
COUNT: START 0.0 END 1110.9  
NET DELIVERY 1110.9 GALLONS  
1075 PREMIUM PROPANE LPG 1

\*\* DUPLICATE TICKET \*\*

TANK 29118 PERCENT FULL 80%  
STORAGE TANK GAS FOR MTR  
HAZMAT CHARGE \$ 3.17  
State Sales : 6.000% \$ 0.19  
DELIVERY TOTAL DUE \$ 3.36  
PREVIOUS BALANCE \$ 0.00  
TOTAL DUE \$ 3.36

\*\*PAY ONLINE AT IRVINGTONGAS.COM\*\*

LONGITUDE -85.912135  
LATITUDE 37.768270

1

IRVINGTON GAS CO.  
270-547-2455 & 270-877-2661  
PO BOX 55  
IRVINGTON, KY 40146

ARBOR VIEW SUBDIVISON  
MC SMITH FARMS INC  
500 ASPEN CT  
ELIZABETHTOWN, KY 4270180950

DATE 01/03/12 11:09:41  
ACCOUNT # SUBARB01  
REFERENCE 15085  
DRIVER # 007  
TRUCK UNIT ID 2  
SALE # 4796 DATE 01/03/12 11:36:41  
COUNT: START 0.0 END 1320.1  
NET DELIVERY 1320.1 GALLONS  
1075 PREMIUM PROPANE LPG 1

\*\* DUPLICATE TICKET \*\*

TANK 2550 PERCENT FULL 70%

Residential Propane

HAZMAT CHARGE	\$	3.17
DELIVERY TOTAL DUE	\$	3.17
PREVIOUS BALANCE	\$	-44.69
CREDIT AMOUNT	\$	41.52

\*\*PAY ONLINE AT IRVINGTONGAS.COM\*\*

LONGITUDE -85.818565  
LATITUDE 37.741090

(

IRVINGTON GAS CO.  
270-547-2455 & 270-877-2661  
PO BOX 55  
IRVINGTON, KY 40146

ARBOR VIEW SUBDIVISON  
MCSMITH FARMS INC  
500 ASPEN CT  
ELIZABETHTOWN, KY 4270180950

DATE 02/08/12 14:31:52  
ACCOUNT # SUBARB01  
REFERENCE 15689  
DRIVER # 007  
TRUCK UNIT ID 2  
SALE # 5360 DATE 02/08/12 15:03:45  
COUNT: START 0.0 END 1570.6  
NET DELIVERY 1570.6 GALLONS  
1075 PREMIUM PROPANE LPG 1

\*\* DUPLICATE TICKET \*\*

TANK 2550 PERCENT FULL 80%

Residential Propane

HAZMAT CHARGE	\$	0.00
DELIVERY TOTAL DUE	\$	0.00
PREVIOUS BALANCE	\$	-44.69
CREDIT AMOUNT	\$	44.69

\*\*PAY ONLINE AT IRVINGTONGAS.COM\*\*

LONGITUDE -85.818617  
LATITUDE 37.741155

|

IRVINGTON GAS CO.  
270-547-2455 & 270-877-2661  
PO BOX 55  
IRVINGTON, KY 40146

ARBOR VIEW SUBDIVISON  
MCSMITH FARMS INC  
500 ASPEN CT  
ELIZABETHTOWN, KY 4270180950

DATE 02/09/12 14:49:38  
ACCOUNT # SUBARB01  
REFERENCE 15710  
DRIVER # 007  
TRUCK UNIT ID 2  
SALE # 5379 DATE 02/09/12 15:25:01  
COUNT: START 0.0 END 1788.8  
NET DELIVERY 1788.8 GALLONS  
1075 PREMIUM PROPANE LPG 1

\*\* DUPLICATE TICKET \*\*

TANK 2550 PERCENT FULL 80%

Residential Propane

HAZMAT CHARGE	\$	0.00
DELIVERY TOTAL DUE	\$	0.00
PREVIOUS BALANCE	\$	-44.69
CREDIT AMOUNT	\$	44.69

\*\*PAY ONLINE AT IRVINGTONGAS.COM\*\*

LONGITUDE -85.815743  
LATITUDE 37.739733

!

IRVINGTON GAS CO.  
270-547-2455 & 270-877-2661  
PO BOX 55  
IRVINGTON, KY 40146

ARBOR VIEW SUBDIVISON  
MCSMITH FARMS INC  
500 ASPEN CT  
ELIZABETHTOWN, KY 4270180950

DATE 04/25/12 13:04:17  
ACCOUNT # SUBARB01  
REFERENCE 16119  
DRIVER # 007  
TRUCK UNIT ID 2  
SALE # 5764 DATE 04/25/12 13:54:56  
COUNT: START 0.0 END 2481.9  
NET DELIVERY 2481.9 GALLONS  
1075 PREMIUM PROPANE LPG 1

\*\* DUPLICATE TICKET \*\*

TANK 2550 PERCENT FULL 80%

Residential Propane

HAZMAT CHARGE	\$	3.17
DELIVERY TOTAL DUE	\$	3.17
PREVIOUS BALANCE	\$	-44.69
CREDIT AMOUNT	\$	41.52

\*\*PAY ONLINE AT IRVINGGAS.COM\*\*

LONGITUDE -85.818597  
LATITUDE 37.741113

1

IRVINGTON GAS CO.  
270-547-2455 & 270-877-2661  
PO BOX 55  
IRVINGTON, KY 40146

ARBOR VIEW SUBDIVISON  
MCSMITH FARMS INC  
500 ASPEN CT  
ELIZABETHTOWN, KY 4270180950

DATE 11/20/12 14:29:20  
ACCOUNT # SUBARB01  
REFERENCE 17438  
DRIVER # 007  
TRUCK UNIT ID 2  
SALE # 7017 DATE 11/20/12 14:54:22  
COUNT: START 0.0 END 1208.3  
NET DELIVERY 1208.3 GALLONS  
1075 PREMIUM PROPANE LPG 1

\*\* DUPLICATE TICKET \*\*

TANK 2550 PERCENT FULL 80%  
Residential Propane  
HAZMAT CHARGE \$ 3.17  
DELIVERY TOTAL DUE \$ 3.17  
PREVIOUS BALANCE \$ -44.69  
CREDIT AMOUNT \$ 41.52

\*\*PAY ONLINE AT IRVINGTONGAS.COM\*\*

LONGITUDE -85.815733  
LATITUDE 37.739758  
|



IRVINGTON GAS CO.  
270-547-2455 & 270-877-2661  
PO BOX 55  
IRVINGTON, KY 40146

ARBOR VIEW SUBDIVISION  
MC SMITH FARMS INC  
500 ASPEN CT  
ELIZABETHTOWN, KY 4270180950

DATE 11/27/12 14:17:17  
ACCOUNT # SUBARB01  
REFERENCE 17533  
DRIVER # 007  
TRUCK UNIT ID 2  
SALE # 7105 DATE 11/27/12 14:50:53  
COUNT: START 0.0 END 1566.9  
NET DELIVERY 1566.9 GALLONS  
1075 PREMIUM PROPANE LPG 1

\*\* DUPLICATE TICKET \*\*

TANK 2550 PERCENT FULL 80%  
Residential Propane  
HAZMAT CHARGE \$ 0.00  
DELIVERY TOTAL DUE \$ 0.00  
PREVIOUS BALANCE \$ -44.69  
CREDIT AMOUNT \$ 44.69

\*\*PAY ONLINE AT IRVINGTONGAS.COM\*\*

LONGITUDE -85.818575  
LATITUDE 37.741130

1

IRVINGTON GAS CO.  
270-547-2455 & 270-877-2661  
PO BOX 55  
IRVINGTON, KY 40146

ARBOR VIEW SUBDIVISON  
MCSMITH FARMS INC  
500 ASPEN CT  
ELIZABETHTOWN, KY 4270180950

DATE 12/14/12 13:47:18  
ACCOUNT # SUBARB01  
REFERENCE 17792  
DRIVER # 007  
TRUCK UNIT ID 2  
SALE # 7354 DATE 12/14/12 14:04:56  
COUNT: START 0.0 END 669.7  
NET DELIVERY 669.7 GALLONS  
1075 PREMIUM PROPANE LPG 1

\*\* DUPLICATE TICKET \*\*

TANK 2550 PERCENT FULL 80%  
Residential Propane  
HAZMAT CHARGE \$ 3.17  
DELIVERY TOTAL DUE \$ 3.17  
PREVIOUS BALANCE \$ -44.69  
CREDIT AMOUNT \$ 41.52

\*\*\*PAY ONLINE AT IRVINGGAS.COM\*\*\*

LONGITUDE -85.815690  
LATITUDE 37.739790

|

IRVINGTON GAS CO.  
270-547-2455 & 270-877-2661  
PO BOX 55  
IRVINGTON, KY 40146

ARBOR VIEW SUBDIVISON  
MCSMITH FARMS INC  
500 ASPEN CT  
ELIZABETHTOWN, KY 4270180950

DATE 12/17/12 12:46:46  
ACCOUNT # SUBARB01  
REFERENCE 17803  
DRIVER # 007  
TRUCK UNIT ID 2  
SALE # 7365 DATE 12/17/12 13:02:51  
COUNT: START 0.0 END 667.5  
NET DELIVERY 667.5 GALLONS  
1075 PREMIUM PROPANE LPG 1

\*\* DUPLICATE TICKET \*\*

TANK 2550 PERCENT FULL 85%

Residential Propane

HAZMAT CHARGE	\$	3.17
DELIVERY TOTAL DUE	\$	3.17
PREVIOUS BALANCE	\$	-44.69
CREDIT AMOUNT	\$	41.52

**\*\*PAY ONLINE AT IRVINGTONGAS.COM\*\***

LONGITUDE -85.818600  
LATITUDE 37.741090

!

IRVINGTON GAS CO.  
270-547-2455 & 270-877-2661  
PO BOX 55  
IRVINGTON, KY 40146

VINELAND  
DUMMY TANK  
VINE GROVE, KY 40175

DATE 01/16/12 09:49:21  
ACCOUNT # VINELA01  
REFERENCE 32951  
DRIVER # 204  
TRUCK UNIT ID 6  
SALE # 2813 DATE 01/16/12 10:22:37  
COUNT: START 0.0 END 1326.6  
NET DELIVERY 1326.6 GALLONS  
1075 PREMIUM PROPANE LPG 1

\*\* DUPLICATE TICKET \*\*

TANK 9326 PERCENT FULL 80%  
STORAGE TANK GAS FOR MTR  
HAZMAT CHARGE \$ 3.17  
State Sales : 6.000% \$ 0.19  
DELIVERY TOTAL DUE \$ 3.36  
PREVIOUS BALANCE \$ 0.00  
TOTAL DUE \$ 3.36

\*\*PAY ONLINE AT IRVINGTONGAS.COM\*\*

LONGITUDE -85.972737  
LATITUDE 37.823353

|

IRVINGTON GAS CO.  
270-547-2455 & 270-877-2661  
PO BOX 55  
IRVINGTON, KY 40146

VINELAND  
DUMMY TANK  
VINE GROVE, KY 40175

DATE 01/31/12 15:33:42  
ACCOUNT # VINELAND1  
REFERENCE 33231  
DRIVER # 204  
TRUCK UNIT ID 6  
SALE # 3081 DATE 01/31/12 16:03:22  
COUNT: START 0.0 END 1138.4  
NET DELIVERY 1138.4 GALLONS  
1075 PREMIUM PROPANE LPG 1

\*\* DUPLICATE TICKET \*\*

TANK 9326 PERCENT FULL 80%  
STORAGE TANK GAS FOR MTR  
HAZMAT CHARGE \$ 3.17  
State Sales : 6.000% \$ 0.19  
DELIVERY TOTAL DUE \$ 3.36  
PREVIOUS BALANCE \$ 0.00  
TOTAL DUE \$ 3.36

\*\*\*PAY ONLINE AT IRVINGTONGAS.COM\*\*\*

LONGITUDE -85.972775  
LATITUDE 37.823375

!

IRVINGTON GAS CO.  
270-547-2455 & 270-877-2661  
PO BOX 55  
IRVINGTON, KY 40146

VINELAND  
DUMMY TANK  
VINE GROVE, KY 40175

DATE 02/10/12 15:22:46  
ACCOUNT # VINELA01  
REFERENCE 33424  
DRIVER # 204  
TRUCK UNIT ID 6  
SALE # 3266 DATE 02/10/12 15:41:57  
COUNT: START 0.0 END 671.3  
NET DELIVERY 671.3 GALLONS  
1075 PREMIUM PROPANE LPG 1

\*\* DUPLICATE TICKET \*\*

TANK 9326 PERCENT FULL 80%  
STORAGE TANK GAS FOR MTR  
HAZMAT CHARGE \$ 3.17  
State Sales : 6.000% \$ 0.19  
DELIVERY TOTAL DUE \$ 3.36  
PREVIOUS BALANCE \$ 0.00  
TOTAL DUE \$ 3.36

\*\*PAY ONLINE AT IRVINGTONGAS.COM\*\*

LONGITUDE -85.972762  
LATITUDE 37.823350

|

IRVINGTON GAS CO.  
270-547-2455 & 270-877-2661  
PO BOX 55  
IRVINGTON, KY 40146

VINELAND  
DUMMY TANK  
VINE GROVE, KY 40175

DATE 02/23/12 11:10:45  
ACCOUNT # VINELAG01  
REFERENCE 33600  
DRIVER # 204  
TRUCK UNIT ID 6  
SALE # 3429 DATE 02/23/12 11:32:41  
COUNT: START 0.0 END 949.9  
NET DELIVERY 949.9 GALLONS  
1075 PREMIUM PROPANE LPG 1

\*\* DUPLICATE TICKET \*\*

TANK 9326 PERCENT FULL 80%  
STORAGE TANK GAS FOR MTR  
HAZMAT CHARGE \$ 3.17  
State Sales : 6.000% \$ 0.19  
DELIVERY TOTAL DUE \$ 3.36  
PREVIOUS BALANCE \$ 0.00  
TOTAL DUE \$ 3.36

\*\*PAY ONLINE AT IRVINGTONGAS.COM\*\*

LONGITUDE -85.972783  
LATITUDE 37.823353

|

IRVINGTON GAS CO.  
270-547-2455 & 270-877-2661  
PO BOX 55  
IRVINGTON, KY 40146

VINELAND  
DUMMY TANK  
VINE GROVE, KY 40175

DATE 04/25/12 13:11:12  
ACCOUNT # VINELA01  
REFERENCE 33705  
DRIVER # 204  
TRUCK UNIT ID 6  
SALE # 3528 DATE 04/25/12 13:58:36  
COUNT: START 0.0 END 2181.1  
NET DELIVERY 2181.1 GALLONS  
1075 PREMIUM PROPANE LPG 1

\*\* DUPLICATE TICKET \*\*

TANK 9326 PERCENT FULL 80%  
STORAGE TANK GAS FUR MTR  
HAZMAT CHARGE \$ 3.17  
State Sales : 6.000% \$ 0.19  
DELIVERY TOTAL DUE \$ 3.36  
PREVIOUS BALANCE \$ 0.00  
TOTAL DUE \$ 3.36

\*\*PAY ONLINE AT IRVINGTONGAS.COM\*\*

LONGITUDE -85.972763  
LATITUDE 37.823358

|



IRVINGTON GAS CO.  
270-547-2455 & 270-877-2661  
PO BOX 55  
IRVINGTON, KY 40146

VINELAND  
DUMMY TANK  
VINE GROVE, KY 40175

DATE 07/11/12 15:02:34  
ACCOUNT # VINELA01  
REFERENCE 16300  
DRIVER # 007  
TRUCK UNIT ID 2  
SALE # 5935 DATE 07/11/12 15:39:53  
COUNT: START 0.0 END 1508.4  
NET DELIVERY 1508.4 GALLONS  
1075 PREMIUM PROPANE LPG 1

\*\* DUPLICATE TICKET \*\*

TANK 9326 PERCENT FULL 80%  
STORAGE TANK GAS FOR MTR  
HAZMAT CHARGE \$ 3.17  
State Sales : 6.000% \$ 0.19  
DELIVERY TOTAL DUE \$ 3.36  
PREVIOUS BALANCE \$ 0.00  
TOTAL DUE \$ 3.36

\*\*PAY ONLINE AT IRVINGGAS.COM\*\*

LONGITUDE -85.973035  
LATITUDE 37.823405

1

IRVINGTON GAS CO.  
270-547-2455 & 270-877-2661  
PO BOX 55  
IRVINGTON, KY 40146

VINELAND  
DUMMY TANK  
VINE GROVE, KY 40175

DATE 08/27/12 14:45:34  
ACCOUNT # VINELA01  
REFERENCE 8055  
DRIVER # 300  
TRUCK UNIT ID 5  
SALE # 7690 DATE 08/27/12 15:04:19  
COUNT: START 0.0 END 893.4  
NET DELIVERY 893.4 GALLONS  
1075 PREMIUM PROPANE LPG 1

\*\* DUPLICATE TICKET \*\*

TANK 9326 PERCENT FULL 82%  
STORAGE TANK GAS FOR MFR  
HAZMAT CHARGE \$ 0.00  
DELIVERY TOTAL DUE \$ 0.00  
PREVIOUS BALANCE \$ 0.00  
TOTAL DUE \$ 0.00

\*\*PAY ONLINE AT IRVINGTONGAS.COM\*\*

LONGITUDE -85.972792  
LATITUDE 37.823355

!

IRVINGTON GAS CO.  
270-547-2455 & 270-877-2661  
PO BOX 55  
IRVINGTON, KY 40146

VINELAND  
DUMMY TANK  
VINE GROVE, KY 40175

DATE 11/08/12 11:08:22  
ACCOUNT # VINELA01  
REFERENCE 1060  
DRIVER # 204  
TRUCK UNIT ID 6  
SALE # 4554 DATE 11/08/12 11:45:24  
COUNT: START 0.0 END 1594.0  
NET DELIVERY 1594.0 GALLONS  
1075 PREMIUM PROPANE LPG 1

\*\* DUPLICATE TICKET \*\*

TANK 9326 PERCENT FULL 80%  
STORAGE TANK GAS FOR MTR  
HAZMAT CHARGE \$ 3.17  
State Sales : 6.000% \$ 0.19  
DELIVERY TOTAL DUE \$ 3.36  
PREVIOUS BALANCE \$ 0.00  
TOTAL DUE \$ 3.36

\*\*\*PAY ONLINE AT IRVINGTONGAS.COM\*\*\*

LONGITUDE -85.972753  
LATITUDE 37.823382

!

IRVINGTON GAS CO.  
170-547-2455 & 270-877-2661  
PO BOX 55  
IRVINGTON, KY 40146

VINELAND  
DUMMY TANK  
VINE GROVE, KY 40175

DATE 11/17/12 09:27:26  
ACCOUNT # VINELA01  
REFERENCE 17419  
DRIVER # 007  
TRUCK UNIT ID 2  
SALE # 7000 DATE 11/17/12 09:48:48  
COUNT: START 0.0 END 823.5  
NET DELIVERY 823.5 GALLONS  
1075 PREMIUM PROPANE LFG 1

\*\* DUPLICATE TICKET \*\*

TANK 9326 PERCENT FULL 80%  
STORAGE TANK GAS FOR MTR  
HAZMAT CHARGE \$ 3.17  
State Sales : 6.000% \$ 0.19  
DELIVERY TOTAL DUE \$ 3.36  
PREVIOUS BALANCE \$ 0.00  
TOTAL DUE \$ 3.36

\*\*\*PAY ONLINE AT IRVINGTONGAS.COM\*\*\*

LONGITUDE -85.973047  
LATITUDE 37.823378

1

IRVINGTON GAS CO.  
270-547-2455 & 270-877-2661  
PO BOX 55  
IRVINGTON, KY 40146

VINELAND  
DUMMY TANK  
VINE GROVE, KY 40175

DATE 11/26/12 14:51:21  
ACCOUNT # VINELA01  
REFERENCE 1198  
DRIVER # 204  
TRUCK UNIT ID 6  
SALE # 4682 DATE 11/26/12 15:03:15  
COUNT: START 0.0 END 419.4  
NET DELIVERY 419.4 GALLONS  
1075 PREMIUM PROPANE LPG 1

\*\* DUPLICATE TICKET \*\*

TANK 9326 PERCENT FULL 80%  
STORAGE TANK GAS FOR MTR  
HAZMAT CHARGE \$ 3.17  
State Sales : 6.000% \$ 0.19  
DELIVERY TOTAL DUE \$ 3.36  
PREVIOUS BALANCE \$ 0.00  
TOTAL DUE \$ 3.36

\*\*\*PAY ONLINE AT IRVINGTONGAS.COM\*\*\*

LONGITUDE -85.972758  
LATITUDE 37.823402

|

IRVINGTON GAS CO.  
270-547-2455 & 270-877-2661  
PO BOX 55  
IRVINGTON, KY 40146

VINELAND  
DUMMY TANK  
VINE GROVE, KY 40175

DATE 12/14/12 08:40:01  
ACCOUNT # VINELA01  
REFERENCE 1485  
DRIVER # 204  
TRUCK UNIT ID 6  
SALE # 4962 DATE 12/14/12 09:01:26  
COUNT: START 0.0 END 959.4  
NET DELIVERY 959.4 GALLONS  
1075 PREMIUM PROPANE LPG 1

\*\* DUPLICATE TICKET \*\*

TANK 9326 PERCENT FULL 80%  
STORAGE TANK GAS FUR MTR  
HAZMAT CHARGE \$ 3.17  
State Sales : 6.000% \$ 0.19  
DELIVERY TOTAL DUE \$ 3.36  
PREVIOUS BALANCE \$ 0.00  
TOTAL DUE \$ 3.36

\*\*\*PAY ONLINE AT IRVINGGAS.COM\*\*\*

LONGITUDE -85.972752  
LATITUDE 37.823377

!

IRVINGTON GAS CO.  
270-547-2455 & 270-877-2661  
PO BOX 55  
IRVINGTON, KY 40146

VINELAND  
DUMMY TANK  
VINE GROVE, KY 40175

DATE 12/26/12 10:07:36  
ACCOUNT # VINELA01  
REFERENCE 1597  
DRIVER # 204  
TRUCK UNIT ID 6  
SALE # 5068 DATE 12/26/12 10:24:37  
COUNT: START 0.0 END 741.9  
NET DELIVERY 741.9 GALLONS  
1075 PREMIUM PROPANE LPG 1

\*\* DUPLICATE TICKET \*\*

TANK 9326 PERCENT FULL 80%  
STORAGE TANK GAS PUR MTR  
HAZMAT CHARGE \$ 3.17  
State Sales : 6.000% \$ 0.19  
DELIVERY TOTAL DUE \$ 3.36  
PREVIOUS BALANCE \$ 0.00  
TOTAL DUE \$ 3.36

\*\*PAY ONLINE AT IRVINGTONGAS.COM\*\*

LONGITUDE -85.972725  
LATITUDE 37.823357

|

IRVINGTON GAS CO.  
270-547-2455 & 270-877-2661  
PO BOX 55  
IRVINGTON, KY 40146

SERENE OAK SUBDIVISON  
STORAGE TANKS ONLY  
ELIZABETHTOWN, KY 42701

DATE 01/16/12 11:37:41  
ACCOUNT # SUBSER01  
REFERENCE 15309  
DRIVER # 007  
TRUCK UNIT ID 2  
SALE # 5007 DATE 01/16/12 11:59:55  
COUNT: START 0.0 END 808.2  
NET DELIVERY 808.2 GALLONS  
1075 PREMIUM PROPANE LPG 1

\*\* DUPLICATE TICKET \*\*

TANK NO TANK01 PERCENT FULL 80%  
Residential Propane  
HAZMAT CHARGE \$ 3.17  
DELIVERY TOTAL DUE \$ 3.17  
PREVIOUS BALANCE \$ 0.00  
TOTAL DUE \$ 3.17

\*\*PAY ONLINE AT IRVINGTONGAS.COM\*\*

LONGITUDE -85.898023  
LATITUDE 37.643877

1



IRVINGTON GAS CO.  
270-547-2455 & 270-877-2661  
PO BOX 55  
IRVINGTON, KY 40146

SERENE OAK SUBDIVISON  
STORAGE TANKS ONLY  
ELIZABETHTOWN, KY 42701

DATE 02/13/12 13:14:03  
ACCOUNT # SUBSER01  
REFERENCE 15743  
DRIVER # 007  
TRUCK UNIT ID 2  
SALE # 5409 DATE 02/13/12 13:38:16  
COUNT: START 0.0 END 1230.8  
NET DELIVERY 1230.8 GALLONS  
1075 PREMIUM PROPANE LPG 1

\*\* DUPLICATE TICKET \*\*

TANK NO TANK01 PERCENT FULL 80%  
Residential Propane  
OUT OF GAS CHARGE \$ 35.00  
HAZMAT CHARGE \$ 3.17  
DELIVERY TOTAL DUE \$ 38.17  
PREVIOUS BALANCE \$ 0.00  
TOTAL DUE \$ 38.17

\*\*PAY ONLINE AT IRVINGTONGAS.COM\*\*

LONGITUDE -85.898027  
LATITUDE 37.643922

|

IRVINGTON GAS CO.  
270-547-2455 & 270-877-2661  
PO BOX 55  
IRVINGTON, KY 40146

SERENE OAK SUBDIVISION  
STORAGE TANKS ONLY  
ELIZABETHTOWN, KY 42701

DATE 02/13/12 13:42:33  
ACCOUNT # SUBSER01  
REFERENCE 15744  
DRIVER # 007  
TRUCK UNIT ID 2  
SALE # 5410 DATE 02/13/12 13:42:44  
COUNT: START 0.0 END 0.0  
NET DELIVERY 0.0 GALLONS  
1075 PREMIUM PROPANE LPG 1

\*\* DUPLICATE TICKET \*\*

TANK NO TANK01 PERCENT FULL 80%  
Residential Propane  
AFTER HOUR DELIVERY \$ 50.00  
HAZMAT CHARGE \$ 3.17  
OFT OF GAS CHARGE \$ 35.00  
DELIVERY TOTAL DUE \$ 88.17  
PREVIOUS BALANCE \$ 38.17  
TOTAL DUE \$ 126.34

\*\*\*PAY ONLINE AT IRVINGTONGAS.COM\*\*\*

LONGITUDE -85.898030  
LATITUDE 37.643907

!

IRVINGTON GAS CO.  
770-547-2455 & 270-877-2661  
PO BOX 55  
IRVINGTON, KY 40146

SERENE OAK SUBDIVISION  
STORAGE TANKS ONLY  
ELIZABETHTOWN, KY 42701

DATE 04/25/12 13:22:04  
ACCOUNT # SUBSER01  
REFERENCE 24318  
DRIVER # 950  
TRUCK UNIT ID 7  
SALE # 4138 DATE 04/25/12 14:08:19  
COUNT: START 0.0 END 1459.2  
NET DELIVERY 1459.2 GALLONS  
1075 PREMIUM PROPANE LPG 1

\*\* DUPLICATE TICKET \*\*

TANK NO TANK01 PERCENT FULL 80%

Residential Propane

HAZMAT CHARGE	\$	3.17
DELIVERY TOTAL DUE	\$	3.17
PREVIOUS BALANCE	\$	0.00
TOTAL DUE	\$	3.17

\*\*PAY ONLINE AT IRVINGTONGAS.COM\*\*

LONGITUDE -85.898043  
LATITUDE 37.643875

|

IRVINGTON GAS CO.  
270-547-2455 & 270-877-2661  
PO BOX 55  
IRVINGTON, KY 40146

SERENE OAK SUBDIVISON  
STORAGE TANKS ONLY  
ELIZABETHTOWN, KY 42701

DATE 07/13/12 10:44:52  
ACCOUNT # SUBSER01  
REFERENCE 16305  
DRIVER # 007  
TRUCK UNIT ID 2  
SALE # 5940 DATE 07/13/12 11:09:51  
COUNT: START 0.0 END 550.2  
NET DELIVERY 550.2 GALLONS  
1075 PREMIUM PROPANE LPG 1

\*\* DUPLICATE TICKET \*\*

TANK NO TANK01 PERCENT FULL 80%

Residential Propane

HAZMAT CHARGE	\$	3.17
DELIVERY TOTAL DUE	\$	3.17
PREVIOUS BALANCE	\$	0.00
TOTAL DUE	\$	3.17

\*\*PAY ONLINE AT IRVINGTONGAS.COM\*\*

LONGITUDE -85.898060  
LATITUDE 37.643932

|

IRVINGTON GAS CO.  
270-547-2455 & 270-877-2661  
PO BOX 55  
IRVINGTON, KY 40146

SERENE OAK SUBDIVISON  
STORAGE TANKS ONLY  
ELIZABETHTOWN, KY 42701

DATE 11/15/12 15:58:12  
ACCOUNT # SUBSER01  
REFERENCE 17397  
DRIVER # 007  
TRUCK UNIT ID 2  
SALE # 6979 DATE 11/15/12 16:31:19  
COUNT: START 0.0 END 1330.9  
NET DELIVERY 1330.9 GALLONS  
1075 PREMIUM PROPANE LPG 1

\*\* DUPLICATE TICKET \*\*

TANK NO TANK01 PERCENT FULL 85%  
Residential Propane  
HAZMAT CHARGE \$ 0.00  
HAZMAT CHARGE \$ 0.00  
DELIVERY TOTAL DUE \$ 0.00  
PREVIOUS BALANCE \$ 0.00  
TOTAL DUE \$ 0.00

\*\*PAY ONLINE AT IRVINGTONGAS.COM\*\*

LONGITUDE -85.898020  
LATITUDE 37.643953

!

IRVINGTON GAS CO.  
270-547-2455 & 270-877-2661  
PO BOX 55  
IRVINGTON, KY 40146

SERENE OAK SUBDIVISON  
STORAGE TANKS ONLY  
ELIZABETHTOWN, KY 42701

DATE 12/13/12 11:47:58  
ACCOUNT # SUBSER01  
REFERENCE 25372  
DRIVER # 950  
TRUCK UNIT ID 7  
SALE # 5161 DATE 12/13/12 12:13:02  
COUNT: START 0.0 END 1014.8  
NET DELIVERY 1014.8 GALLONS  
1075 PREMIUM PROPANE LPG 1

\*\* DUPLICATE TICKET \*\*

TANK NO TANK01 PERCENT FULL 85%  
Residential Propane  
HAZMAT CHARGE \$ 3.17  
DELIVERY TOTAL DUE \$ 3.17  
PREVIOUS BALANCE \$ 0.00  
TOTAL DUE \$ 3.17

---

\*\*PAY ONLINE AT IRVINGTONGAS.COM\*\*  
LONGITUDE -85.898017  
LATITUDE 37.643903

|

IRVINGTON GAS CO.  
270-547-2455 & 270-877-2661  
PO BOX 55  
IRVINGTON, KY 40146

FOX LAIR  
DUMMY TANKS  
TAYLORSVILLE, KY 40071

DATE 01/16/12 11:10:22  
ACCOUNT # LAIFOX01  
REFERENCE 23711

IRVINGTON GAS CO.  
270-547-2455 & 270-877-2661  
PO BOX 55  
IRVINGTON, KY 40146

FOX LAIR  
DUMMY TANKS  
TAYLORSVILLE, KY 40071

DATE 01/16/12 11:14:23  
ACCOUNT # LAIFOX01  
REFERENCE 23711  
DRIVER # 950  
TRUCK UNIT ID 7

SALE # 3561 DATE 01/16/12 11:47:48  
COUNT: START 0.0 END 1392.6  
NET DELIVERY 1392.6 GALLONS  
1075 PREMIUM PROPANE LPG 1

\*\* DUPLICATE TICKET \*\*

TANK FOX PERCENT FULL 85%

Gas Sales In Office

PRICE/GALLONS	\$ 1.9990
PRODUCT SUBTOTAL	\$ 2783.81
HAZMAT CHARGE	\$ 3.17
State Sales : 6.000%	\$ 167.22
DELIVERY TOTAL DUE	\$ 2954.20
IF PAID BY 02/15/12	\$ 2954.20
PREVIOUS BALANCE	\$ 0.00
TOTAL DUE	\$ 2954.20

\*\*PAY ONLINE AT IRVINGTONGAS.COM\*\*

LONGITUDE -85.380963  
LATITUDE 38.109067

!

IRVINGTON GAS CO.  
270-547-2455 & 270-877-2661  
PO BOX 55  
IRVINGTON, KY 40146

FOX LAIR  
DUMMY TANKS  
TAYLORSVILLE, KY 40071

DATE 03/02/12 10:46:55  
ACCOUNT # LAIFOX01  
REFERENCE 24227  
DRIVER # 950  
TRUCK UNIT ID 7  
SALE # 4050 DATE 03/02/12 11:45:36  
COUNT: START 0.0 END 2314.4  
NET DELIVERY 2314.4 GALLONS  
1075 PREMIUM PROPANE LFG 1

\*\* DUPLICATE TICKET \*\*

TANK FOX PERCENT FULL 85%

Gas Sales In Office

PRICE/GALLONS	\$ 1.9990
PRODUCT SUBTOTAL	\$ 4626.49
HAZMAT CHARGE	\$ 3.17
State Sales : 6.000%	\$ 277.78
DELIVERY TOTAL DUE	\$ 4907.44
IF PAID BY 04/01/12	\$ 4907.44
PREVIOUS BALANCE	\$ 0.00
TOTAL DUE	\$ 4907.44

\*\*PAY ONLINE AT IRVINGTONGAS.COM\*\*

LONGITUDE -85.379653  
LATITUDE 38.111710

1



IRVINGTON GAS CO.  
270-547-2455 & 270-877-2661  
PO BOX 55  
IRVINGTON, KY 40146

FOX LAIR  
DUMMY TANKS  
TAYLORSVILLE, KY 40071

DATE 12/13/12 09:39:22  
ACCOUNT # IAIFOK01  
REFERENCE 1479  
DRIVER # 204  
TRUCK UNIT ID 6  
SALE # 4956 DATE 12/13/12 10:49:37  
COUNT: START 0.0 END 2612.1  
NET DELIVERY 2612.1 GALLONS  
1075 PREMIUM PROPANE LPG 1

\*\* DUPLICATE TICKET \*\*

TANK FOX PERCENT FULL 80%

Gas Sales In Office

PRICE/GALLONS	\$ 1.6490
PRODUCT SUBTOTAL	\$ 4307.35
HAZMAT CHARGE	\$ 3.17
State Sales : 6.000%	\$ 258.63
DELIVERY TOTAL DUE	\$ 4569.15
PREVIOUS BALANCE	\$ 0.00
TOTAL DUE	\$ 4569.15

\*\*PAY ONLINE AT IRVINGTONGAS.COM\*\*

LONGITUDE -85.380972  
LATITUDE 38.109068

|

IRVINGTON GAS CO.  
270-547-2455 & 270-877-2661  
PO BOX 55  
IRVINGTON, KY 40146

FOX LAIR  
DUMMY TANKS  
TAYLORSVILLE, KY 40071

DATE 12/13/12 13:58:14  
ACCOUNT # LAIFOX01  
REFERENCE 1482  
DRIVER # 204  
TRUCK UNIT ID 6  
SALE # 4959 DATE 12/13/12 14:23:59  
COUNT: START 0.0 END 961.3  
NET DELIVERY 961.3 GALLONS  
1075 PREMIUM PROPANE LPG 1

\*\* DUPLICATE TICKET \*\*

TANK FOX PERCENT FULL 80%

Gas Sales In Office

PRICE/GALLONS	\$ 1.6490
PRODUCT SUBTOTAL	\$ 1585.18
HAZMAT CHARGE	\$ 3.17
State Sales : 6.000%	\$ 95.30
DELIVERY TOTAL DUE	\$ 1683.65
PREVIOUS BALANCE	\$ 4569.15
TOTAL DUE	\$ 6252.80

\*\*PAY ONLINE AT IRVINGTONGAS.COM\*\*

LONGITUDE -85.380930  
LATITUDE 38.109097

1

IRVINGTON GAS CO.  
270-547-2455 & 270-877-2661  
PO BOX 55  
IRVINGTON, KY 40146

COWLEY CROSSINGS  
RADCLIFF, KY 40160

DATE 01/18/12 10:25:26  
ACCOUNT # CROCCOW01  
REFERENCE 32990  
DRIVER # 204  
TRUCK UNIT ID 6  
SALE # 2848 DATE 01/18/12 10:58:38  
COUNT: START 0.0 END 1196.2  
NET DELIVERY 1196.2 GALLONS  
1075 PREMIUM PROPANE LPG 1

\*\* DUPLICATE TICKET \*\*

TANK 10042 PERCENT FULL 80%  
STORAGE TANK GAS FOR MTR  
HAZMAT CHARGE \$ 3.17  
State Sales : 6.000% \$ 0.19  
DELIVERY TOTAL DUE \$ 3.36  
PREVIOUS BALANCE \$ 600.00  
TOTAL DUE \$ 603.36

\*\*PAY ONLINE AT IRVINGTONGAS.COM\*\*

LONGITUDE -85.918795  
LATITUDE 37.778698

1

IRVINGTON GAS CO.  
270-547-2455 & 270-877-2661  
PO BOX 55  
IRVINGTON, KY 40146

COWLEY CROSSINGS  
RADCLIFF, KY 40160

DATE 01/18/12 12:08:52  
ACCOUNT # CROCCW01  
REFERENCE 32991  
DRIVER # 204  
TRUCK UNIT ID 6  
SALE # 2849 DATE 01/18/12 12:47:28  
COUNT: START 0.0 END 1663.7  
NET DELIVERY 1663.7 GALLONS  
1075 PREMIUM PROPANE LPG 1

\*\* DUPLICATE TICKET \*\*

TANK 10042 PERCENT FULL 80%  
STORAGE TANK GAS FOR MTR  
HAZMAT CHARGE \$ 3.17  
State Sales : 6.000% \$ 0.19  
DELIVERY TOTAL DUE \$ 3.36  
PREVIOUS BALANCE \$ 603.36  
TOTAL DUE \$ 606.72

\*\*PAY ONLINE AT IRVINGTONGAS.COM\*\*

LONGITUDE -85.918577  
LATITUDE 37.778717

|

IRVINGTON GAS CO.  
270-547-2455 & 270-877-2661  
PO BOX 55  
IRVINGTON, KY 40146

COWLEY CROSSINGS  
RADCLIFF, KY 40160

DATE 08/29/12 11:12:20  
ACCOUNT # CROCDW01  
REFERENCE 405  
DRIVER # 204  
TRUCK UNIT ID 6  
SALE # 3922 DATE 08/29/12 12:08:14  
COUNT: START 0.0 END 2436.6  
NET DELIVERY 2436.6 GALLONS  
1075 PREMIUM PROPANE LPG 1

\*\* DUPLICATE TICKET \*\*

TANK 10042 PERCENT FULL 80%  
STORAGE TANK GAS FOR MTR  
HAZMAT CHARGE \$ 3.17  
State Sales : 6.000% \$ 0.19  
DELIVERY TOTAL DUE \$ 3.36  
PREVIOUS BALANCE \$ 0.00  
TOTAL DUE \$ 3.36

\*\*PAY ONLINE AT IRVINGTONGAS.COM\*\*

LONGITUDE -85.918683  
LATITUDE 37.778682  
|

IRVINGTON GAS CO.  
270-547-2455 & 270-877-2661  
PO BOX 55  
IRVINGTON, KY 40146

THE ORCHARD  
SAINT JOHN'S ROAD  
ELIZABETHTOWN, KY 42701

DATE 01/16/12 09:08:26  
ACCOUNT # ORCTHE01  
REFERENCE 15305  
DRIVER # 007  
TRUCK UNIT ID 2  
SALE # 5003 DATE 01/16/12 09:30:19  
COUNT: START 0.0 END 1019.7  
NET DELIVERY 1019.7 GALLONS  
1075 PREMIUM PROPANE LBS 1

\*\* DUPLICATE TICKET \*\*

TANK ORCHARD PERCENT FULL 80%

Residential Propane

HAZMAT CHARGE	\$	3.17
DELIVERY TOTAL DUE	\$	3.17
PREVIOUS BALANCE	\$	0.00
TOTAL DUE	\$	3.17

\*\*PAY ONLINE AT IRVINGTONGAS.COM\*\*

LONGITUDE -85.941703  
LATITUDE 37.698758

1

IRVINGTON GAS CO.  
270-547-2455 & 270-877-2661  
PO BOX 55  
IRVINGTON, KY 40146

THE ORCHARD  
SAINT JOHN'S ROAD  
ELIZABETHTOWN, KY 42701

DATE 04/25/12 10:12:26  
ACCOUNT # ORCTHE01  
REFERENCE 16115  
DRIVER # 007  
TRUCK UNIT ID 2  
SALE # 5761 DATE 04/25/12 10:39:31  
COUNT: START 0.0 END 1400.8  
NET DELIVERY 1400.8 GALLONS  
1075 PREMIUM PROPANE LPG 1

\*\* DUPLICATE TICKET \*\*

TANK ORCHARD PERCENT FULL 85%

Residential Propane

HAZMAT CHARGE	\$	3.17
DELIVERY TOTAL DUE	\$	3.17
PREVIOUS BALANCE	\$	0.00
TOTAL DUE	\$	3.17

\*\*PAY ONLINE AT IRVINGTONGAS.COM\*\*

LONGITUDE -85.942057  
LATITUDE 37.698822

1

IRVINGTON GAS CO.  
270-547-2455 & 270-877-2661  
PO BOX 55  
IRVINGTON, KY 40146

THE ORCHARD  
SAINT JOHN'S ROAD  
ELIZABETHTOWN, KY 42701

DATE 07/16/12 09:57:52  
ACCOUNT # ORCITHE01  
REFERENCE 16316  
DRIVER # 007  
TRUCK UNIT ID 2  
SALE # 5951 DATE 07/16/12 10:08:54  
COUNT: START 0.0 END 478.1  
NET DELIVERY 478.1 GALLONS  
1075 PREMIUM PROPANE LPG 1

\*\* DUPLICATE TICKET \*\*

TANK ORCHARD PERCENT FULL 80%

Residential Propane

HAZMAT CHARGE	\$	0.00
DELIVERY TOTAL DUE	\$	0.00
PREVIOUS BALANCE	\$	0.00
TOTAL DUE	\$	0.00

\*\*PAY ONLINE AT IRVINGTONGAS.COM\*\*

LONGITUDE -85.942085  
LATITUDE 37.698865

1



IRVINGTON GAS CO.  
270-547-2455 & 270-877-2661  
PO BOX 55  
IRVINGTON, KY 40146

THE ORCHARD  
SAINT JOHN'S ROAD  
ELIZABETHTOWN, KY 42701

DATE 11/08/12 10:20:30  
ACCOUNT # ORCTHE01  
REFERENCE 17327  
DRIVER # 007  
TRUCK UNIT ID 2  
SALE # 6912 DATE 11/08/12 10:40:03  
COUNTY: START 0.0 END 800.1  
NET DELIVERY 800.1 GALLONS  
1075 PREMIUM PROPANE LPG 1

\*\* DUPLICATE TICKET \*\*

TANK ORCHARD PERCENT FULL 80%  
Residential Propane  
HAZMAT CHARGE \$ 3.17  
DELIVERY TOTAL DUE \$ 3.17  
PREVIOUS BALANCE \$ 0.00  
TOTAL DUE \$ 3.17

\*\*\*PAY ONLINE AT IRVINGTONGAS.COM\*\*\*

LONGITUDE -85.942022  
LATITUDE 37.698823

1

IRVINGTON GAS CO.  
270-547-2455 & 270-877-2661  
PO BOX 55  
IRVINGTON, KY 40146

THE ORCEARD  
SAINT JOHN'S ROAD  
ELIZABETHTOWN, KY 42701

DATE 12/13/12 12:33:34  
ACCOUNT # ORCTHE01  
REFERENCE 17778  
DRIVER # 007  
TRUCK UNIT ID 2  
SALE # 7341 DATE 12/13/12 12:46:55  
COUNT: START 0.0 END 457.2  
NET DELIVERY 457.2 GALLONS  
1075 PREMIUM PROPANE LPG 1

\*\* DUPLICATE TICKET \*\*

TANK ORCEARD PERCENT FULL 80%

Residential Propane

HAZMAT CHARGE	\$	0.00
DELIVERY TOTAL DUE	\$	0.00
PREVIOUS BALANCE	\$	0.00
TOTAL DUE	\$	0.00

\*\*PAY ONLINE AT IRVINGTONGAS.COM\*\*

LONGITUDE -85.941858  
LATITUDE 37.698783

|