

RECEIVED

MAR 1 2013

PUBLIC SERVICE  
COMMISSION

NOTARIZED PROOF OF PUBLICATION

STATE OF KENTUCKY

COUNTY OF Franklin

Before me, a Notary Public, in and for said County and State, this 28<sup>th</sup> day of February, 2013, came Holly Willard

personally known to me, who being duly sworn, states as follows: That she is the Advertising Assistant of the Kentucky Press Service, Inc; that she has personal knowledge of the contents of this affidavit; and that the publications included on the attached list published the Legal Notice for Kenergy.

Holly M. Willard  
Signed

Bonnie J. Howard  
Notary Public

My commission expires 9-18-16

Calhoun McLean Co. News—2/21/13  
Central City Leader News—2/19/13  
Eddyville Herald Ledger—2/20/13  
Hardinsburg Herald News—2/20/13  
Hartford Ohio Co. Times-News—2/20/13  
Hawesville Hancock Clarion—2/21/13  
Henderson Gleaner—2/24/13  
Madisonville Messenger—2/24/13  
Marion Crittenden Press—2/21/13  
Morganfield Union Co. Advocate—2/20/13  
Owensboro Messenger Inquirer—2/24/13  
Princeton Times Leader—2/20/13  
Providence Journal Enterprise—2/20/13  
Smithland Livingston Ledger—2/19/13

RECEIVED  
MAR 1 2013  
PUBLIC SERVICE  
COMMISSION

*Kenergy*

**Classic/Sports/Collector Cars**

**MUSTANG '99 GT Convertible Anniversary Collectors Edition** mi 5 speed manual trans garage kept - \$7800/obo call 314-6261

**Off Road Vehicles**

sakl Mule '01 good tires & bat \$4,000 270-295-7253

**LEGALS**

**Legals**

**PUBLIC NOTICE**

following Estate has been pro d in the McLean District Court: ite of: Jon Bradshaw, Amy L. ryer, 2081 Locust St., Owens- ), KY 42301 and Nada V. Brad- w, 717 Vandiver Rd., Island, KY 50 appointed Co-Executors. At- ey: Darren L. Brawner, 2645 Jerica St., Suite 200, Owens- ), KY 42301.

sons having claims against said estate should present same, veri- fied according to law, to the per- al representative no later than (6) months from date of ap- intment.

Stephanie J. King-Logsdon, Clerk McLean District & Circuit Courts

**u'll Find It FIRST**  
**The Classifieds**

**0955 Legals**

**PUBLIC NOTICE**

The following Estate has been pro- bated in the McLean District Court: Estate of: Madeline Nicole Jones a minor. Billy Jones, 240 Briarcliff Dr., Calhoun, KY 42327, appointed as Guardian.

Persons having claims against said estate should present same, veri- fied according to law, to the per- sonal representative no later than six (6) months from date of ap- pointment.

Stephanie J. King-Logsdon, Clerk McLean District & Circuit Courts

**PUBLIC NOTICE**

The following Estate has been pro- bated in the McLean District Court: Estate of: Madge Collins Rhodes, deceased. Kathy Diane Townsend, 2237 Boarman Dr., Owensboro, KY 42301, appointed Executrix. An- gela L. Thompson, Reynolds & Reynolds, LLP, 2200 E. Parrish Ave, Bldg. C, Suite LL104, Owensboro, KY 42303, Attorney.

Persons having claims against said estate should present same, veri- fied according to law, to the per- sonal representative no later than six (6) months from date of ap- pointment.

Stephanie J. King-Logsdon, Clerk McLean District & Circuit Courts

**0955 Legals**

**PUBLIC NOTICE**

The following Estate has been pro- bated in the McLean District Court: Estate of: Patrick Ray Jones a minor. Billy Jones, 240 Briarcliff Dr., Calhoun, KY 42327, appointed as Guardian.

Persons having claims against said estate should present same, veri- fied according to law, to the per- sonal representative no later than six (6) months from date of ap- pointment.

Stephanie J. King-Logsdon, Clerk McLean District & Circuit Courts

**Something Missing?**  
**Let McLean Co. News Classifieds help you find it.**  
**Toll Free:**  
**1-866-926-6161**

**Advertisement for McLean County Schools Local Planning Committee Meeting**

The McLean County Schools' Local Planning Committee (LPC) will conduct a **PUBLIC MEETING** on March 5th at 5:30 PM CST at the McLean County Middle School Library, 1901 Hwy. 136 East, Calhoun, KY 42327. This is the first of a series of meetings to develop a District Facilities Plan for McLean County Schools. The Kentucky Department of Education will be conducting a training session for LPC members at this first meeting. This meeting and future meetings will be informal gatherings to encourage local participation through community suggestions relative to future utilization of existing school facilities and construction of new school facilities. These community suggestions or recommendations will be closely monitored by the Local Planning Committee in the development of a proposed District Facility Plan for the McLean County School District.  
*The public is welcome and invited to this series of meetings.*

**SPECIAL OCCASIONS**

**BOARMAN TAX SERVICE**  
(Johanna & Judith) low Fees  
711 E. 6th St. 683-7373

Personal & Business  
Tax Preparation  
Robert F. Kuphal CPA  
Free Second Look & Free E-Filing!  
3520 New Hartford Rd. Suite# 301  
Mon-Fri. 8-5 Sat. 9-3pm 684-5158

**AAA TAX SERVICE- 926-5967**  
**1806 TRIPLETT STREET**  
E-File Provider Pat Henning  
**GREAT SERVICE - BEST PRICES**

Julia H. Wiman, CPA 270-314-7757  
Over 22 yrs. exp. - Lic. KY & IN  
Tax & Accounting Services  
julawiman@roadrunner.com

Find the car of your  
dreams -- Look in the  
McLean County News  
Classifieds today.

**Advertisement for McLean County Schools Local Planning Committee Meeting and Public Forum**

The McLean County Schools' Local Planning Committee (LPC) will **PUBLIC FORUM** on March 12th and March 19th, 2013 at 5:30 PM Calhoun Elementary School, 755 Main Street, Calhoun, KY 42327 **first & second** in a series of three forums to develop a District Fa for McLean County Schools. This meeting and future meetings wi al gatherings to encourage local participation through commur tions relative to future utilization of existing school facilities and of new school facilities. These Forums will be followed by a me Local Facilities Planning Committee at this same location. The j will be to solicit public comment concerning a District Facilities munity suggestions or recommendations will be closely monit Local Planning Committee. The public is welcome and invited to l meetings.

**PUBLIC NOTICE**

This notice is intended to inform the residents of The City of Live tucky that the city, is in the process of closing out the City of Liv and Generators Project. The project was funded in part by the Ke munity Development Block Grant Program. A public hearing w The City of Livermore office on February 26, 2013 at 10 a.m. Th this hearing is to review past use of funds and program perform are any questions or comments about the project, please direc following:

Mayor Sonny Renfrow  
P.O. Box 279  
Livermore, KY 42352  
(270)278-2113  
TOO: 1-800-648-6057

**Discrimination Clause**  
The City of Livermore does not discriminate on the basis of ra tional origin, sex, age, religion or disability, and provides, upon r onable accommodation, including auxiliary aids and services, to dividual with a disability an equal opportunity to participate ir programs and activities. Any persons requiring special needs assistance should contact Mayor Sonny Renfrow at (270)278- five days prior to the meeting. The TOO number for the hearin 1/800-648-6057.

Written comments will be received until the date of the hearing.

**PUBLIC NOTICE**  
**CASE NO. 2013-00035**

**APPLICATION OF KENERGY CORP.**  
**ADJUSTMENT IN EXISTING RATES**

Road, Henderson, KY 42420, will file an application for an adjust- tucky Public Service Commission in Case No. 2013-00035. The pro- w-through to Kenergy's customers the wholesale power expense ll result from the rate increase Big Rivers Electric Corporation propos- rates contained in this notice are the rates proposed by Kenergy lic Service Commission may order rates to be charged that differ from ay result in rates for members other than the rates proposed by ice.

s are as follows:

	<b>Present Rate Schedule</b>	<b>Proposed Rate Schedule</b>
<b>ee-Phase):</b>		
Point	\$12.00 per month \$0.077904	\$ 14.40 per month \$0.09350
<b>ase:</b>		
Point	\$ 17.00 per month \$0.076587	\$ 20.40 per month \$0.09192
<b>ts (0 - 1,000 KW):</b>		
Point	\$ 35.00 per month	\$ 42.01 per month
	\$ 4.44	\$ 5.33
<b>WH</b>	\$ 0.067279	\$ 0.08075
<b>WH</b>	\$ 0.051605	\$ 0.06194

**Present Rate Schedule Proposed Rate Schedule**

<b>Not Available for New Installations after April 1, 2011:</b>			
<b>Pedestal Mounted Pole</b>			
STEEL 25 FT PEDESTAL MT POLE	\$	6.94	\$ 8.33
STEEL 30 FT PEDESTAL MT POLE	\$	7.81	\$ 9.37
STEEL 39 FT PEDESTAL MT POLE	\$	13.13	\$ 15.76
<b>Available for New Installations after April 1, 2011:</b>			
WOOD 30 FT DIRECT BURIAL POLE	\$	4.35	\$ 5.22
ALUMINUM 28 FT DIRECT BURIAL	\$	8.94	\$ 10.73
<b>Not Available for New Installations after April 1, 2011:</b>			
FLUTED FIBERGLASS 15 FT POLE	\$	9.55	\$ 11.46
FLUTED ALUMINUM 14FT POLE	\$	10.49	\$ 12.59
<b>Street Lighting Service(per month)</b>			
<b>Not available for New Installations after April 1, 2011 - Existing Fixture will be Replaced with Nearest Equivalent Lumen Fixture upon Failure:</b>			
7000 LUMEN-175W-MERCURY VAPOR	\$	8.50	\$ 10.20
20000 LUMEN-400W-MERCURY VAPOR	\$	12.45	\$ 14.94
<b>Available for New Installations after April 1, 2011:</b>			
9500 LUMEN-100W-HPS STREET LGT	\$	8.01	\$ 9.6
27000 LUMEN-250W-HPS ST LIGHT	\$	11.89	\$ 14.27
<b>Not Available for New Installations after April 1, 2011 - Existing Fixture will be Replaced with Nearest Equivalent Lumen Fixture upon Failure:</b>			
9000 LUMEN-100W MH	\$	7.55	\$ 9.01
24000 LUMEN-400W MH	\$	15.98	\$ 19.11
<b>Underground Service with Non-Std. Pole</b>			
UG NON-STD POLE-GOVT & DISTRICT	\$	5.59	\$ 6.7
<b>Overhead Service to Street Lighting Districts</b>			
OH FAC-STREET LIGHT DISTRICT	\$	2.33	\$ 2.8
<b>Decorative Underground Service</b>			
<b>Not Available for New Installations after April 1, 2011:</b>			
6300 LUMEN-DECOR-70W-HPS ACORN	\$	11.04	\$ 13.2
6300 LUMEN DECOR-70W-HPS LANTERN	\$	11.04	\$ 13.2
12600 LUMEN HPS-70W-2 DECOR FIX	\$	19.56	\$ 23.4
<b>Available for New Installations after April 1, 2011:</b>			
28000 LUMEN - HPS ACORN GL 14 FT POLE	\$	21.16	\$ 25.4

*Kenergy*



**PUBLIC NOTICE FOR INVOLUNTARY TERMINATION OF MEDICARE/MEDICAID PROVIDER AGREEMENT**

Greenville, Kentucky 42645.  
 On February 12, 2013 the estate of Nadine M. Pace, 110 Brank Street, Greenville, Kentucky 42645 to Steve Russell, Executor, 110 Brank Street, Greenville, Kentucky 42345. Attorney representing estate: Beau Marks, P.O. Box 569, Greenville, Kentucky 45.

**PUBLIC NOTICE**  
 There will be a called meeting for the City Council of Central City on Monday, March 4, at 5:00 p.m. at City Hall, 214 North 1st Street, Central City, Kentucky 42330. For the purpose of taking comments on a proposed water rate increase set forth by the United States Department of Agriculture Rural Development. 2-19c

Notice is hereby given that effective February 27, 2013 the agreement between Muhlenberg Community Hospital, located in Greenville, Kentucky, and the Secretary of Health and Human Services, as a provider of services in the Health Insurance for the Aged and Disabled Program (Medicare), is terminated. The Centers for Medicare and Medicaid Services has determined that Muhlenberg Community Hospital is not in compliance with the following conditions of coverage:

- 42 CFR 482.13 Patients' Rights
- 42 CFR 482.23 Nursing Services

The Medicare program will not make payment to Muhlenberg Community Hospital for services to patients on or after February 27, 2013. For patients serviced prior to February 27, 2013, payment may continue for a maximum of 30 days for services. Such payment is specifically limited to covered services through the close of business February 27, 2013.

Sandra M. Pace  
 Associate Regional Administrator  
 Division of Survey and Certification



**PUBLIC NOTICE**  
 CASE NO. 2013-00035

**REGULATION OF KENERGY CORP. ADJUSTMENT IN EXISTING RATES**

Henderson, KY 42420, will file an application for an adjust- Public Service Commission in Case No. 2013-00035. The pro- gress to Kenergy's customers the wholesale power expense t from the rate increase Big Rivers Electric Corporation propos- contained in this notice are the rates proposed by Kenergy. The Public Service Commission may order rates to be charged that differ from the rates proposed by Kenergy for members other than the rates proposed by Kenergy.

as follows:

	<u>Present Rate Schedule</u>	<u>Proposed Rate Schedule</u>
1,000 KW):		
	\$ 12.00 per month	\$ 14.40 per month
	\$0.077904	\$0.09350
	\$ 17.00 per month	\$ 20.40 per month
	\$0.076587	\$0.09192
	\$ 35.00 per month	\$ 42.01 per month
	\$ 4.44	\$ 5.33
	\$ 0.067279	\$ 0.08075
	\$ 0.051605	\$ 0.06194
	\$ 0.045679	\$ 0.05482

	<u>Present Rate Schedule</u>	<u>Proposed Rate Schedule</u>
<b>Not Available for New Installations after April 1, 2011:</b>		
<b>Pedestal Mounted Pole</b>		
STEEL 25 FT PEDESTAL MT POLE	\$ 6.94	\$ 8.33
STEEL 30 FT PEDESTAL MT POLE	\$ 7.81	\$ 9.37
STEEL 39 FT PEDESTAL MT POLE	\$ 13.13	\$ 15.76
<b>Available for New Installations after April 1, 2011:</b>		
WOOD 30 FT DIRECT BURIAL POLE	\$ 4.35	\$ 5.22
ALUMINUM 28 FT DIRECT BURIAL	\$ 8.94	\$ 10.73
<b>Not Available for New Installations after April 1, 2011:</b>		
FLUTED FIBERGLASS 15 FT POLE	\$ 9.55	\$ 11.46
FLUTED ALUMINUM 14FT POLE	\$ 10.49	\$ 12.59
<b>Street Lighting Service(per month)</b>		
<b>Not available for New Installations after April 1, 2011 - Existing Fixture will be Replaced with the Nearest Equivalent Lumen Fixture upon Failure:</b>		
7000 LUMEN-175W-MERCURY VAPOR	\$ 8.50	\$ 10.20
20000 LUMEN-400W-MERCURY VAPOR	\$ 12.45	\$ 14.94
<b>Available for New Installations after April 1, 2011:</b>		
9500 LUMEN-100W-HPS STREET LGT	\$ 8.01	\$ 9.61
27000 LUMEN-250W-HPS ST LIGHT	\$ 11.89	\$ 14.27
<b>Not Available for New Installations after April 1, 2011 - Existing Fixture will be Replaced with the Nearest Equivalent Lumen Fixture upon Failure:</b>		
9000 LUMEN-100W MH	\$ 7.55	\$ 9.06
24000 LUMEN-400W MH	\$ 15.98	\$ 19.18
<b>Underground Service with Non-Std. Pole</b>		
UG NON-STD POLE-GOVT & DISTRICT	\$ 5.59	\$ 6.71
<b>Overhead Service to Street Lighting Districts</b>		
OH FAC-STREET LIGHT DISTRICT	\$ 2.33	\$ 2.80
<b>Decorative Underground Service</b>		
<b>Not Available for New Installations after April 1, 2011:</b>		
6300 LUMEN-DECOR-70W-HPS ACORN	\$ 11.04	\$ 13.25
6300 LUMEN DECOR-70W-HPS LANTERN	\$ 11.04	\$ 13.25
12600 LUMEN HPS-70W-2 DECOR FIX	\$ 19.56	\$ 23.48
<b>Available for New Installations after April 1, 2011:</b>		
28000 LUMEN - HPS ACORN GL 14 FT POLE	\$ 21.16	\$ 25.40
<b>Special Street Lighting Districts</b>		

Kenergy

**PUBLIC NOTICE**  
**CASE NO. 2013-00035**

**APPLICATION OF KENERGY CORP.**  
**FOR AN ADJUSTMENT IN EXISTING RATES**

...on Road, Henderson, KY 42420, will file an application for an adjust-  
 Kentucky Public Service Commission in Case No. 2013-00035. The  
 ed to flow through to Kenergy's customers the wholesale power  
 265, which will result from the rate increase Big Rivers Electric  
 No. 2012-00535. The rates contained in this notice are the rates pro-  
 ever the Kentucky Public Service Commission may order rates to be  
 posed rates. Such action may result in rates for members other than  
 y and contained in this notice.

...as are as follows:

	<u>Present Rate Schedule</u>	<u>Proposed Rate Schedule</u>
<b>Three Phase</b>		
by Point	\$12.00 per month \$0.077904	\$ 14.40 per month \$0.09350
<b>Phase</b>		
by Point	\$ 17.00 per month \$0.076587	\$ 20.40 per month \$0.09192
<b>Rate (0 - 1,000 KW)</b>		
by Point	\$ 35.00 per month \$ 4.44	\$ 42.01 per month \$ 5.33
<b>per KWH</b>	\$ 0.067279	\$ 0.08075
<b>per KWH</b>	\$ 0.051605	\$ 0.06194
<b>per KWH</b>	\$ 0.045678	\$ 0.05482
	\$ .50 per KW	\$ .60 per KW
<b>Rate (1,001 KW &amp; Over)</b>		
(above 00%)		
by Point	\$ 750.00 per month \$ 9.38	\$ 900.15 per month \$11.26
<b>per KWH</b>	\$ 0.040129	\$ 0.04816
<b>per KWH</b>	\$ 0.036866	\$ 0.04425
<b>per KWH</b>	\$ 0.034895	\$ 0.04188
	\$ .50 per KW	\$ .60 per KW
<b>Rate (1,001 KW &amp; Over)</b>		
(above 00%)		
by Point	\$ 750.00 per month \$ 5.28	\$ 900.15 per month \$ 6.34
	\$ 0.055613	\$ 0.06675

**Not Available for New Installations after April 1, 2011:**

**Pedestal Mounted Pole**

	<u>Present Rate Schedule</u>	<u>Proposed Rate</u>
STEEL 25 FT PEDESTAL MT POLE	\$ 6.94	\$ 8.31
STEEL 30 FT PEDESTAL MT POLE	\$ 7.81	\$ 9.31
STEEL 39 FT PEDESTAL MT POLE	\$ 13.13	\$ 15.71

**Available for New Installations after April 1, 2011:**

WOOD 30 FT DIRECT BURIAL POLE	\$ 4.35	\$ 5.21
ALUMINUM 28 FT DIRECT BURIAL	\$ 8.94	\$ 10.71

**Not Available for New Installations after April 1, 2011:**

FLUTED FIBERGLASS 15 FT POLE	\$ 9.55	\$ 11.41
FLUTED ALUMINUM 14FT POLE	\$ 10.49	\$ 12.51

**Street Lighting Service(per month)**

**Not available for New Installations after April 1, 2011 - Existing Fixture will be Replaced with**

**Equivalent Lumen Fixture upon Failure:**

7000 LUMEN-175W-MERCURY VAPOR	\$ 8.50	\$ 10.21
20000 LUMEN-400W-MERCURY VAPOR	\$ 12.45	\$ 14.91

**Available for New Installations after April 1, 2011:**

9500 LUMEN-100W-HPS STREET LGT	\$ 8.01	\$ 9.61
27000 LUMEN-250W-HPS ST LIGHT	\$ 11.89	\$ 14.21

**Not Available for New Installations after April 1, 2011 - Existing Fixture will be Replaced with**

**Nearest Equivalent Lumen Fixture upon Failure:**

9000 LUMEN-100W MH	\$ 7.55	\$ 9.01
24000 LUMEN-400W MH	\$ 15.98	\$ 19.11

**Underground Service with Non-Std. Pole**

UG NON-STD POLE-GOVT & DISTRICT	\$ 5.59	\$ 6.71
---------------------------------	---------	---------

**Overhead Service to Street Lighting Districts**

OH FAC-STREET LIGHT DISTRICT	\$ 2.33	\$ 2.81
------------------------------	---------	---------

**Decorative Underground Service**

**Not Available for New Installations after April 1, 2011:**

6300 LUMEN-DECOR-70W-HPS ACORN	\$ 11.04	\$ 13.21
6300 LUMEN DECOR-70W-HPS LANTERN	\$ 11.04	\$ 13.21
12600 LUMEN HPS-70W-2 DECOR FIX	\$ 19.56	\$ 23.41

**Available for New Installations after April 1, 2011:**

28000 LUMEN - HPS ACORN GL 14 FT POLE	\$ 21.16	\$ 25.41
---------------------------------------	----------	----------

**Special Street Lighting Districts**

**Not Available for New Installations after April 1, 2011:**

BASKETT STREET LIGHTING	\$ 2.94	\$ 3.51
MEADOW HILL STREET LIGHTING	\$ 2.68	\$ 3.21
SPOTTSVILLE STREET LIGHTING	\$ 3.32	\$ 3.91

Present Rate Schedule

Proposed Rate

**Renewable Resource Energy Service Rider**

Per Kilowatt Hour Premium of:

Non-Direct Served Customers:

per Kilowatt Hour Premium of: \$ 0.026722 \$ 0.026088

Direct Served Customers (excluding Class A) \$ 0.030495 \$ 0.025

**Large Industrial Customers Served Under Special Contract**

**Dedicated Delivery Points (Class A)**

Base Energy Charge per KWH \$ 0.039480 \$ 0.047648

**Dedicated Delivery Points (Class B)**

Demand Charge per KW \$10.50 \$12.41

Energy Charge per KWH \$ 0.024674 \$ 0.030166

**Dedicated Delivery Points (Class C)**

Demand Charge per KW \$ 10.50 \$ 12.41

Energy Charge per KWH \$ 0.027508 \$ 0.033

**Small Power Production or Cogeneration (100 KW or less):**

(Customer Sells Power to Kenergy)

Base Payment per KWH \$ 0.029736 \$ 0.03

**Small Power Production or Cogeneration(Over 100KW):**

**PUBLIC NOTICE**  
CASE NO. 2013-00035

**APPLICATION OF KENERGY CORP.  
FOR AN ADJUSTMENT IN EXISTING RATES**

Kenergy, 1000 North Road, Henderson, KY 42420, will file an application for an adjustment of its rates with the Kentucky Public Service Commission in Case No. 2013-00035. The proposed rates will result in a rate increase for Kenergy's customers. The proposed rates will result in a rate increase for Kenergy's customers. The proposed rates will result in a rate increase for Kenergy's customers.

The proposed rates are as follows:

	<u>Present Rate Schedule</u>	<u>Proposed Rate Schedule</u>
<b>Residential (Phase):</b>		
Point	\$12.00 per month \$0.077904	\$14.40 per month \$0.09350
Base:		
Point	\$17.00 per month \$0.076587	\$20.40 per month \$0.09192
<b>Commercial (0 - 1,000 KW):</b>		
Point	\$35.00 per month \$4.44	\$42.01 per month \$5.33
MH	\$0.067279	\$0.08075
MH	\$0.051605	\$0.06194
per KWH	\$0.045679 \$.50 per KW	\$0.05482 \$.60 per KW
<b>Commercial (1,001 KW &amp; Over):</b>		
Point	\$750.00 per month \$9.38	\$900.15 per month \$11.26
per KWH	\$0.040129	\$0.04816
per KWH	\$0.036866	\$0.04425
per KWH	\$0.034895 \$.50 per KW	\$0.04188 \$.60 per KW
Point	\$750.00 per month \$5.28	\$900.15 per month \$6.34
per KWH	\$0.055613	\$0.06675
per KWH	\$0.04872 \$.50 per KW	\$0.05845 \$.60 per KW

Present Rate Schedule    Proposed Rate Schedule

Existing rates after December 1, 2012 - Will Be Replaced with the

7000 LUMEN-175W-MERCURY VAPOR	\$ 8.50	\$ 10.20
20000 LUMEN-400W-MERCURY VAPOR	\$ 12.45	\$ 14.94
9500 LUMEN-100W-HPS STREET LGT	\$ 8.01	\$ 9.61
27000 LUMEN-250W-HPS ST LIGHT	\$ 11.89	\$ 14.27
9000 LUMEN-100W MH	\$ 7.55	\$ 9.06
24000 LUMEN-400W MH	\$ 15.98	\$ 19.18
OH FAC-STREET LIGHT DISTRICT	\$ 2.33	\$ 2.80
6300 LUMEN-DECOR-70W-HPS ACORN	\$ 11.04	\$ 13.25
6300 LUMEN DECOR-70W-HPS LANTERN	\$ 11.04	\$ 13.25
12600 LUMEN HPS-70W-2 DECOR FIX	\$ 19.56	\$ 23.48
28000 LUMEN - HPS ACORN GL 14 FT POLE	\$ 21.16	\$ 25.40
BASKETT STREET LIGHTING	\$ 2.94	\$ 3.53
MEADOW HILL STREET LIGHTING	\$ 2.68	\$ 3.22
SPOTTSVILLE STREET LIGHTING	\$ 3.32	\$ 3.98
per KWH	\$ 6.88	\$ 8.26

**Not Available for New Installations after April 1, 2011:**

<b>Pedestal Mounted Pole</b>		
STEEL 25 FT PEDESTAL MT POLE	\$ 6.94	\$ 8.33
STEEL 30 FT PEDESTAL MT POLE	\$ 7.81	\$ 9.37
STEEL 39 FT PEDESTAL MT POLE	\$ 13.13	\$ 15.76

**Available for New Installations after April 1, 2011:**

WOOD 30 FT DIRECT BURIAL POLE	\$ 4.35	\$ 5.22
ALUMINUM 28 FT DIRECT BURIAL	\$ 8.94	\$ 10.73

**Not Available for New Installations after April 1, 2011:**

FLUTED FIBERGLASS 15 FT POLE	\$ 9.55	\$ 11.46
FLUTED ALUMINUM 14FT POLE	\$ 10.49	\$ 12.59

**Street Lighting Service(per month)**

Not available for New Installations after April 1, 2011 - Existing Fixture will be Replaced with

**Nearest Equivalent Lumen Fixture upon Failure:**

7000 LUMEN-175W-MERCURY VAPOR	\$ 8.50	\$ 10.20
20000 LUMEN-400W-MERCURY VAPOR	\$ 12.45	\$ 14.94

**Available for New Installations after April 1, 2011:**

9500 LUMEN-100W-HPS STREET LGT	\$ 8.01	\$ 9.61
27000 LUMEN-250W-HPS ST LIGHT	\$ 11.89	\$ 14.27

**Not Available for New Installations after April 1, 2011 - Existing Fixture will be Replaced with**

**Nearest Equivalent Lumen Fixture upon Failure:**

9000 LUMEN-100W MH	\$ 7.55	\$ 9.06
24000 LUMEN-400W MH	\$ 15.98	\$ 19.18

**Underground Service with Non-Std. Pole**

UG NON-STD POLE-GOVT & DISTRICT	\$ 5.59	\$ 6.71
---------------------------------	---------	---------

**Overhead Service to Street Lighting Districts**

OH FAC-STREET LIGHT DISTRICT	\$ 2.33	\$ 2.80
------------------------------	---------	---------

**Decorative Underground Service**

**Not Available for New Installations after April 1, 2011:**

6300 LUMEN-DECOR-70W-HPS ACORN	\$ 11.04	\$ 13.25
6300 LUMEN DECOR-70W-HPS LANTERN	\$ 11.04	\$ 13.25
12600 LUMEN HPS-70W-2 DECOR FIX	\$ 19.56	\$ 23.48

**Available for New Installations after April 1, 2011:**

28000 LUMEN - HPS ACORN GL 14 FT POLE	\$ 21.16	\$ 25.40
---------------------------------------	----------	----------

**Special Street Lighting Districts**

**Not Available for New Installations after April 1, 2011:**

BASKETT STREET LIGHTING	\$ 2.94	\$ 3.53
MEADOW HILL STREET LIGHTING	\$ 2.68	\$ 3.22
SPOTTSVILLE STREET LIGHTING	\$ 3.32	\$ 3.98

Present Rate Schedule    Proposed Rate Schedule

**Renewable Resource Energy Service Rider**

Per Kilowatt Hour Premium of:		
Non-Direct Served Customers:		
per Kilowatt Hour Premium of:	\$ 0.026722	\$ 0.026088
Direct Served Customers (excluding Class A)	\$ 0.030495	\$ 0.025

**Large Industrial Customers Served Under Special Contract**

<b>Dedicated Delivery Points (Class A)</b>		
Base Energy Charge per KWH	\$ 0.039480	\$ 0.047648
<b>Dedicated Delivery Points (Class B)</b>		
Demand Charge per KW	\$10.50	\$12.41
Energy Charge per KWH	\$ 0.024674	\$ 0.030166

**Dedicated Delivery Points (Class C)**

Demand Charge per KW	\$ 10.50	\$ 12.41
Energy Charge per KWH	\$ 0.027508	\$ 0.033

**Small Power Production or Cogeneration (100 KW or less):**

(Customer Sells Power to Kenergy)		
Base Payment per KWH	\$ 0.029736	\$ 0.03

**Small Power Production or Cogeneration(Over 100KW):**

(Customer Buys Power from Kenergy)		
The Charges for On-Peak Maintenance Service shall be the greater of:		
(1) per KW of Scheduled Demand per Week	\$ 2.238	\$ 3.955
per KWH of Maintenance Energy	\$ 0.029736	\$ 0.03

or		
(2) % of Market Price	110%	110%

The Charges for Off-Peak Maintenance Service shall be:		
per KW of Scheduled Demand per Week	\$ 2.238	\$ 3.955

**Excess Demand:**

To Import Energy from a 3rd Party:		
(1) % of Actual Cost Incurred	110%	110%

when Power is not Imported the Greater of:		
Charge per KW times highest Excess Demand	\$9.697	\$16.95

or % of Highest Price Received for Off-System	110%	110%
<b>Residential Deposit Amount</b>	\$217.00	\$262.00

The amount and percent changes by rate class are as follows:

**Big Rivers      Retail**  
**Flow-Through    Percent**

*Kenergy*

**Legal Notices**

**Legal Notices**

**Legal Notices**

**Legal Notices**

**Legal Notices**

**NOTICE OF INTENTION TO MINE**

Pursuant to Application Number 892-9001 NW

Pursuant to provisions of KRS 350.055, notice is hereby given that Armstrong Coal Company, Inc., 407 Brown Road, Madisonville, Kentucky 42431 has applied for a permit for a reclamation operation affecting 309.8 acres located 3.5 miles southeast of

0.9 miles north of the junction of State Route 69 and Matanzas Road and Williams Creek.

is located on the Equality U.S.G.S. 7 1/2 minute quadrangle map. The mineral refuse pile. The surface area to be disturbed is owned by Armstrong

is now filed for public inspection at the Division of Mine Reclamation and Enforcement's Regional Office, 625 Hospital Drive, Madisonville, KY 42431. Written requests for a permit conference must be filed with the Director, Division of Mine Reclamation, 127 South, Frankfort, KY 40601.

Comments on this application; all comments, objections and/or requests for a permit conference must be received within 30 days of this date.

**NOTICE OF INTENTION TO MINE**

Pursuant to Application Number 892-9000 MA1

In accordance with the provisions of KRS 350.070, notice is hereby given that Armstrong Company, Inc., 407 Brown Road, Madisonville, Kentucky 42431 has applied for a major revision to an existing surface coal mining and reclamation operation located 2.2 miles east of Bens Lick in Ohio County. The major revision will not add any surface disturbance acres and will add an additional 19.9 acres making a total area of 157.0 acres within the revised permit boundary.

The proposed revision area is approximately 0.9 miles south of Kentucky Highway 69's intersection with Midway Road and located approximately one (1) mile west of Bens Lick Creek.

The proposed amendment is located on the Hartford USGS 7 1/2 -minute quadrangle map. The major revision will underlie land owned by Western Land Company, LLC.

The major revision proposes to add auger mining area to the existing permit.

The application has been filed for public inspection at the Division of Mine Reclamation and Enforcement's Madisonville Regional Office, 625 Hospital Drive, Madisonville, KY 42431. Written comments, objections, or requests for a permit conference must be filed with the Director, Division of Mine Permits, #2 Hudson Hollow, Frankfort, KY 40601.

**PUBLIC NOTICE**

CASE NO. 2013-00035

**THE APPLICATION OF KENERGY CORP. FOR AN ADJUSTMENT IN EXISTING RATES**

At Henderson, KY 42420, will file an application for an adjustment of rates with the Kentucky Public Service Commission in Case No. 2013-00035. The proposed rates are to flow-through to Kenergy's customers the wholesale power expense which will result from the rate increase Big Rivers Electric Corporation proposes. The rates contained in this notice are the rates proposed by Kenergy. The Kentucky Public Service Commission may order rates to be charged that differ from the rates proposed by Kenergy. Action may result in rates for members other than the rates proposed by Kenergy in this notice.

Proposed rates are as follows:

**Present Rate Schedule Proposed Rate Schedule**

	Present Rate Schedule	Proposed Rate Schedule
<b>Single &amp; Three-Phase):</b>		
Delivery Point	\$12.00 per month	\$ 14.40 per month
per kWh	\$0.077904	\$0.09350
<b>Single Phase:</b>		
Delivery Point	\$ 17.00 per month	\$ 20.40 per month
per kWh	\$0.076587	\$0.09192
<b>Large Points (0 - 1,000 KW):</b>		
Delivery Point	\$ 35.00 per month	\$ 42.01 per month
per kWh	\$ 4.44	\$ 5.33
per kWh	\$ 0.067279	\$ 0.08075
per kWh	\$ 0.051605	\$ 0.06194
per kWh	\$ 0.045679	\$ 0.05482
per kWh	\$ 0.50 per kWh	\$ .60 per kWh

**Present Rate Schedule Proposed Rate Schedule**

	Present Rate Schedule	Proposed Rate Schedule
<b>Not Available for New Installations after April 1, 2011:</b>		
<b>Pedestal Mounted Pole</b>		
STEEL 25 FT PEDESTAL MT POLE	\$ 6.94	\$ 9.33
STEEL 30 FT PEDESTAL MT POLE	\$ 7.81	\$ 9.91
STEEL 39 FT PEDESTAL MT POLE	\$ 13.13	\$ 15.71
<b>Available for New Installations after April 1, 2011:</b>		
WOOD 30 FT DIRECT BURIAL POLE	\$ 4.35	\$ 5.33
ALUMINUM 28 FT DIRECT BURIAL	\$ 8.94	\$ 10.71
<b>Not Available for New Installations after April 1, 2011:</b>		
FLUTED FIBERGLASS 15 FT POLE	\$ 9.55	\$ 11.46
FLUTED ALUMINUM 14FT POLE	\$ 10.49	\$ 12.59
<b>Street Lighting Service(per month)</b>		
<b>Not available for New Installations after April 1, 2011 - Existing Fixture will be Replaced with Nearest Equivalent Lumen Fixture upon Failure:</b>		
7000 LUMEN-175W-MERCURY VAPOR	\$ 8.50	\$ 10.20
20000 LUMEN-400W-MERCURY VAPOR	\$ 12.45	\$ 14.94
<b>Available for New Installations after April 1, 2011:</b>		
9500 LUMEN-100W-HPS STREET LGT	\$ 8.01	\$ 9.61
27000 LUMEN-250W-HPS ST LIGHT	\$ 11.89	\$ 14.27
<b>Not Available for New Installations after April 1, 2011 - Existing Fixture will be Replaced with Nearest Equivalent Lumen Fixture upon Failure:</b>		
9000 LUMEN-100W MH	\$ 7.55	\$ 9.06
24000 LUMEN-400W MH	\$ 15.98	\$ 19.18
<b>Underground Service with Non-Std. Pole</b>		
UG NON-STD POLE-GOVT & DISTRICT	\$ 5.59	\$ 6.71
<b>Overhead Service to Street Lighting Districts</b>		
OH FAC-STREET LIGHT DISTRICT	\$ 2.33	\$ 2.80
<b>Decorative Underground Service</b>		
<b>Not Available for New Installations after April 1, 2011:</b>		
6300 LUMEN-DECOR-70W-HPS ACORN	\$ 11.04	\$ 13.25
6300 LUMEN DECOR-70W-HPS LANTERN	\$ 11.04	\$ 13.25
12600 LUMEN HPS-70W-2 DECOR FIX	\$ 19.56	\$ 23.47
<b>Available for New Installations after April 1, 2011:</b>		
28000 LUMEN - HPS ACORN GL 14 FT-POLE	\$ 21.16	\$ 25.39
<b>Special Street Lighting Districts</b>		
<b>Not Available for New Installations after April 1, 2011:</b>		
BASKETT STREET LIGHTING	\$ 2.94	\$ 3.53

# Girls beat Breck 55-

—Continued on page 10  
 stomach virus, and all five seniors missed practice Wednesday," Hancock coach Mike Orr said. "I actually had the virus Thursday night and Friday myself."

Grayson County led 17-5 after one quarter, 34-14 at halftime and 47-29 after three, before pulling farther away in the fourth.

"We were short handed and sick so I'm just going to take this game for what it's worth, which is basically nothing," Orr said "Beth (Rates) wasn't herself, and we started two freshman. We'll just turn the page on this game."

The Lady Hornets made just 1 of 17 shots from behind the arc, and finished 10 of 25 (40%) from the field for the game. Hancock was 12 of 23 from the charity stripe, while Grayson was 8 of 16.

Rates led the Lady Hornets with 13 points, nine rebounds, two assists and two steals, and Audry Hawkins had six points, six boards, our assists and two blocks. Ashlee Orr had six points and two steals, and Mollie

Bozarth had four boards, two boards, and Kelsie had four points boards, and Tori three points and boards.

Kaylan Shull led County with 22 po

## Lady Cougars f in Hardinsburg

By Steve Wimmer

The HCMS sixth grade Lady Cougars struggled to score during a 21-4 loss to St. Romuald in Hardinsburg last Thursday.

The home team led 10-0 at halftime and 16-2 after three quarters.

Kierra Duncan and Claire Westerfield led Hancock County with two points each.

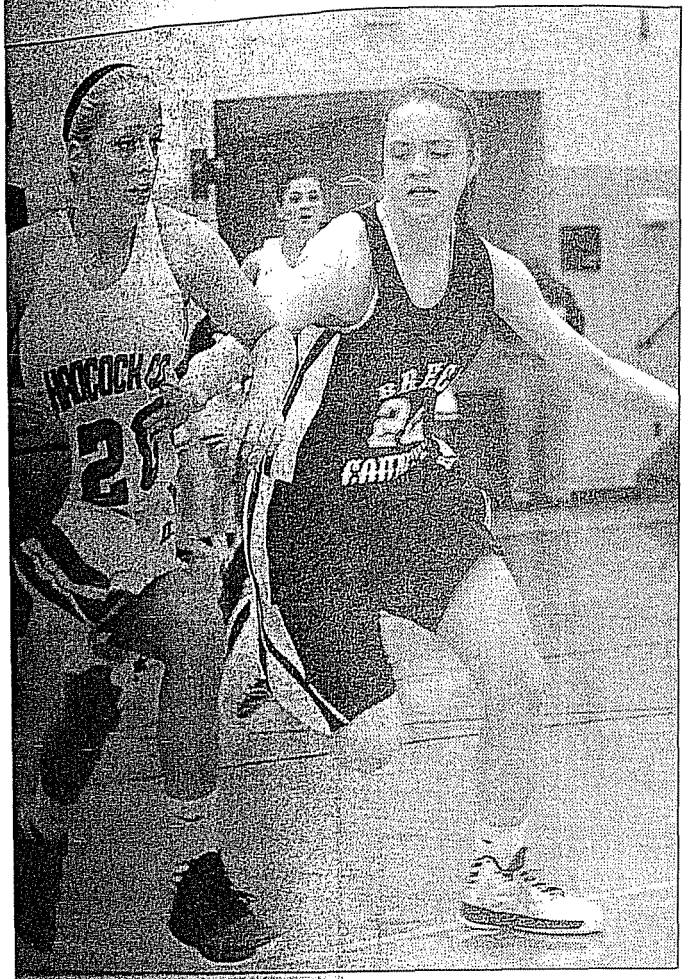
Jarboe led St. Romuald with 10 points.

Hancock County a tough Breck County team here 12. Breck won 34-9

Breck led 18-0 a and 28-7 after three

Tatum Mersch Lady Cougars w points, and Jayda and Alexis Hall each. Westerfield free throw.

Kayla led Breck points.



...the hall for HCMS during the district tourney here Monday.

**PUBLIC NOTICE**  
 CASE NO. 2013-00035

...APPLICATION OF KENERGY CORP.  
 ...AN ADJUSTMENT IN EXISTING RATES

...Hawesville, Ky. 42420, will file an application for an adjust-  
 ...Kenergy Public Service Commission in Case No. 2013-00035. The pro-  
 ...through to Kenergy's customers the wholesale power expense  
 ...from the rate increase. Big Rivers Electric Corporation propos-  
 ...contained in this notice are the rates proposed by Kenergy  
 ...Service Commission may order rates to be charged that differ from  
 ...may occur in rates for members other than the rates proposed by

...are as follows:

	Present Rate Schedule	Proposed Rate Schedule
...	\$12.00 per month	\$ 14.40 per month
...	\$0.077904	\$0.09350
...	\$ 17.00 per month	\$ 20.40 per month
...	\$0.076587	\$0.09192
...	\$ 35.00 per month	\$ 42.01 per month
...	\$ 4.44	\$ 5.33
...	\$ 0.067279	\$ 0.08075
...	\$ 0.051605	\$ 0.06194
...	\$ 0.045679	\$ 0.05482
...	\$ .60 per KW	\$ .60 per KW

	Present Rate Schedule	Proposed Rate Schedule
Not Available for New Installations after April 1, 2011:		
Pedestal Mounted Pole		
STEEL 25 FT PEDESTAL MT POLE	\$ 6.94	\$ 8.33
STEEL 30 FT PEDESTAL MT POLE	\$ 7.81	\$ 9.37
STEEL 39 FT PEDESTAL MT POLE	\$ 13.13	\$ 15.76
Available for New Installations after April 1, 2011:		
WOOD 30 FT DIRECT BURIAL POLE	\$ 4.35	\$ 5.22
ALUMINUM 28 FT DIRECT BURIAL	\$ 8.94	\$ 10.73
Not Available for New Installations after April 1, 2011:		
FLUTED FIBERGLASS 15 FT POLE		
FLUTED ALUMINUM 14FT POLE	\$ 9.55	\$ 11.46
	\$ 10.49	\$ 12.59
Street Lighting Service(per month)		
Not available for New Installations after April 1, 2011 - Existing Fixture will be Replaced with Nearest Equivalent Lumen Fixture upon Failure:		
7000 LUMEN-175W-MERCURY VAPOR	\$ 8.50	\$ 10.20
20000 LUMEN-400W-MERCURY VAPOR	\$ 12.45	\$ 14.94
Available for New Installations after April 1, 2011:		
9500 LUMEN-100W-HPS STREET LGT	\$ 8.01	\$ 9.61
27000 LUMEN-250W-HPS ST LIGHT	\$ 11.89	\$ 14.27
Not Available for New Installations after April 1, 2011 - Existing Fixture will be Replaced with Nearest Equivalent Lumen Fixture upon Failure:		
9000 LUMEN-100W MH	\$ 7.55	\$ 9.06
24000 LUMEN-400W MH	\$ 15.98	\$ 19.18
Underground Service with Non-Std. Pole		
UG NON-STD POLE-GOVT & DISTRICT	\$ 5.59	\$ 6.71
Overhead Service to Street Lighting Districts		
OH FAC-STREET LIGHT DISTRICT	\$ 2.33	\$ 2.80
Decorative Underground Service		
Not Available for New Installations after April 1, 2011:		
6300 LUMEN-DECOR-70W-HPS ACORN	\$ 11.04	\$ 13.25
6300 LUMEN DECOR-70W-HPS LANTERN	\$ 11.04	\$ 13.25
12600 LUMEN HPS-70W-2 DECOR FIX	\$ 19.56	\$ 23.48
Available for New Installations after April 1, 2011:		
28000 LUMEN - HPS ACORN GL 14 FT POLE	\$ 21.16	\$ 25.40
Special Street Lighting Districts		
Not Available for New Installations after April 1, 2011:		
BASKETT STREET LIGHTING	\$ 2.94	\$ 3.53
MEADOW HILL STREET LIGHTING	\$ 2.68	\$ 3.22





**PUBLIC NOTICE**  
**CASE NO. 2013-00035**

**THE APPLICATION OF KENERGY CORP.**  
**FOR AN ADJUSTMENT IN EXISTING RATES**

Id Corydon Road, Henderson, KY 42420, will file an application for an adjustment with the Kentucky Public Service Commission in Case No. 2013-00035. The proposed rates are designed to flow-through to Kenergy's customers the wholesale power expense which will result from the rate increase Big Rivers Electric Corporation proposed in Case No. 535. The rates contained in this notice are the rates proposed by Kenergy. The Kentucky Public Service Commission may order rates to be charged that differ from the rates proposed by Kenergy. Such action may result in rates for members other than the rates proposed by Kenergy in this notice.

used rates are as follows:

**Present Rate Schedule Proposed Rate Schedule**

	Present Rate Schedule	Proposed Rate Schedule
<b>Single &amp; Three-Phase:</b>		
Delivery Point	\$12.00 per month	\$ 14.40 per month
Per KW	\$0.077904	\$0.09350
<b>Single Phase:</b>		
Delivery Point	\$ 17.00 per month	\$ 20.40 per month
Per KW	\$0.076587	\$0.09192
<b>Delivery Points (0 - 1,000 KW):</b>		
Delivery Point	\$ 35.00 per month	\$ 42.01 per month
Per KW	\$ 4.44	\$ 5.33
per KWH	\$ 0.067279	\$ 0.08075
per KWH	\$ 0.051605	\$ 0.06194
KW, per KWH	\$ 0.045679	\$ 0.05482
per KW	\$ .50 per KW	\$ .60 per KW

**Delivery Points (1,001 KW & Over):**

	Present Rate Schedule	Proposed Rate Schedule
Delivery Point	\$ 750.00 per month	\$ 900.15 per month
Per KW	\$ 9.38	\$11.26
per KWH	\$ 0.040129	\$ 0.04816
per KWH	\$ 0.036866	\$ 0.04425
per KWH	\$ 0.034895	\$ 0.04188
per KW	\$ .50 per KW	\$ .60 per KW
<b>Delivery Points (below 50%):</b>		
Delivery Point	\$ 750.00 per month	\$ 900.15 per month
Per KW	\$ 5.28	\$ 6.34
per KWH	\$0.055613	\$ 0.06675
per KWH	\$0.04872	\$ 0.05845
per KW	\$ .50 per KW	\$ .60 per KW

**Present Rate Schedule Proposed Rate Schedule**

	Present Rate Schedule	Proposed Rate Schedule
per month		
Available after December 1, 2012 - Will Be Replaced with the		
WATER VAPOR	\$ 8.50	\$ 10.20
WATER VAPOR	\$ 10.18	\$ 12.22
WATER VAPOR	\$ 12.45	\$ 14.94
FLUORIDE (MH)	\$ 8.01	\$ 9.61
FLUORIDE (MH)	\$ 7.55	\$ 9.06
FLUORIDE (MH)	\$ 16.20	\$ 19.44
HEAD	\$	\$
WATER VAPOR	\$ 6.88	\$

**Not Available for New Installations after April 1, 2011:**

	Present Rate Schedule	Proposed Rate Schedule
<b>Pedestal Mounted Pole</b>		
STEEL 25 FT PEDESTAL MT POLE	\$ 6.94	\$
STEEL 30 FT PEDESTAL MT POLE	\$ 7.81	\$
STEEL 39 FT PEDESTAL MT POLE	\$ 13.13	\$

**Available for New Installations after April 1, 2011:**

WOOD 30 FT DIRECT BURIAL POLE	\$ 4.35	\$
ALUMINUM 28 FT DIRECT BURIAL	\$ 8.94	\$

**Not Available for New Installations after April 1, 2011:**

FLUTED FIBERGLASS 15 FT POLE	\$ 9.55	\$
FLUTED ALUMINUM 14FT POLE	\$ 10.49	\$

**Street Lighting Service(per month)**

**Not available for New Installations after April 1, 2011 - Existing Fixture will be Replaced**

	Present Rate Schedule	Proposed Rate Schedule
<b>Nearest Equivalent Lumen Fixture upon Failure:</b>		
7000 LUMEN-175W-MERCURY VAPOR	\$ 8.50	\$
20000 LUMEN-400W-MERCURY VAPOR	\$ 12.45	\$

**Available for New Installations after April 1, 2011:**

9500 LUMEN-100W-HPS STREET LGT	\$ 8.01	\$
27000 LUMEN-250W-HPS ST LIGHT	\$ 11.89	\$

**Not Available for New Installations after April 1, 2011 - Existing Fixture will be Replaced**

	Present Rate Schedule	Proposed Rate Schedule
<b>Nearest Equivalent Lumen Fixture upon Failure:</b>		
9000 LUMEN-100W MH	\$ 7.55	\$
24000 LUMEN-400W MH	\$ 15.98	\$

**Underground Service with Non-Std. Pole**

UG NON-STD POLE-GOVT & DISTRICT	\$ 5.59	\$
---------------------------------	---------	----

**Overhead Service to Street Lighting Districts**

OH FAC-STREET LIGHT DISTRICT	\$ 2.33	\$
------------------------------	---------	----

**Decorative Underground Service**

**Not Available for New Installations after April 1, 2011:**

6300 LUMEN-DECOR-70W-HPS ACORN	\$ 11.04	\$
6300 LUMEN DECOR-70W-HPS LANTERN	\$ 11.04	\$
12600 LUMEN HPS-70W-2 DECOR FIX	\$ 19.56	\$

**Available for New Installations after April 1, 2011:**

28000 LUMEN - HPS ACORN GL 14 FT POLE	\$ 21.16	\$
---------------------------------------	----------	----

**Special Street Lighting Districts**

**Not Available for New Installations after April 1, 2011:**

BASKETT STREET LIGHTING	\$ 2.94	\$
MEADOW HILL STREET LIGHTING	\$ 2.68	\$
SPOTTSVILLE STREET LIGHTING	\$ 3.32	\$

**Present Rate Schedule Proposed Rate Schedule**

**Renewable Resource Energy Service Rider**

Per Kilowatt Hour Premium of:		
Non-Direct Served Customers:		
per Kilowatt Hour Premium of:	\$ 0.026722	\$ 0.026088
Direct Served Customers (excluding Class A)	\$ 0.030495	\$ 0.025

**Large Industrial Customers Served Under Special Contract**

**Dedicated Delivery Points (Class A)**

Base Energy Charge per KWH	\$ 0.039480	\$ 0.047648
----------------------------	-------------	-------------

**Dedicated Delivery Points (Class B)**

Demand Charge per KW	\$10.50	\$12.41
Energy Charge per KWH	\$ 0.024674	\$ 0.030166

**Dedicated Delivery Points (Class C)**

Demand Charge per KW	\$ 10.50	\$ 12.41
Energy Charge per KWH	\$ 0.027508	\$ 0.033

**Small Power Production or Cogeneration (100 KW or less):**

(Customer Sells Power to Kenergy)		
Base Payment per KWH	\$ 0.029736	\$ 0.03

**Small Power Production or Cogeneration(Over 100KW):**

(Customer Buys Power from Kenergy)		
The Charges for On-Peak Maintenance Service shall be the greater of:		
(1) per KW of Scheduled Demand per Week	\$ 2.238	\$ 3.955
per KWH of Maintenance Energy	\$ 0.029736	\$ 0.03
or		
(2) % of Market Price	110%	110%

The Charges for Off-Peak Maintenance Service shall be:		
per KW of Scheduled Demand per Week	\$ 2.238	\$ 3.955
Excess Demand:		

to Import Energy from a 3rd Party:		
(1) % of Actual Cost Incurred	110%	110%
when Power is not Imported the Greater of:		
Charge per KW times highest Excess Demand	\$9.697	\$16.95
or % of Highest Price Received for Off-System	110%	110%

<b>Residential Deposit Amount</b>	\$217.00	\$262.00
-----------------------------------	----------	----------

The amount and percent changes by rate class are as follows:

# ESS Classifieds

*Kenergy*

Thursday, February

The Office of the City Clerk in the City Building, Marion, Kentucky, where it is available for public inspection.

PREPARED BY:  
ROBERT B. FRAZER  
CITY ATTORNEY  
FRAZER, ROGERS & PEEK  
ATTORNEYS - AT - LAW  
P.O. BOX 361  
MARION, KY 42064  
270/965-2261  
February 18, 2013 (1t-33-c)

Ordinance  
NOTICE OF PASSAGE AND SUMMARY OF ORDINANCE  
ORDINANCE NO. 13-02: AN ORDINANCE AMENDING ORDINANCE 01-23, 328 NORTH MAIN STREET  
Notice is hereby given that the City Council of the City of Marion, Kentucky, at its regular meeting held February 18, 2013 at 6:00 o'clock p.m., gave second reading and passed and adopted an Ordinance relating to the Marion Code of Ordinances, which Ordinance had been given its first reading at its regular meeting of the City Council held on January 14, 2013, at 6:00 o'clock p.m. A summary of the Ordinance is as follows: This Ordinance amends Ordinance No. 01-23 such that the property located at 328 North Main Street is amended from R-3 Residential to C-2 General Business District. The full text of the Ordinance is on file in the Office of the City Clerk in the City Building, Marion, Kentucky, where it is available for public inspection.

PREPARED BY:  
ROBERT B. FRAZER  
CITY ATTORNEY  
FRAZER ROGERS & PEEK  
ATTORNEYS - AT - LAW  
P.O. BOX 361  
MARION, KY 42064  
270/965-2261  
February 18, 2013 (1t-33-c)

Ordinance  
NOTICE OF PASSAGE AND SUMMARY OF ORDINANCE  
ORDINANCE NO. 13-03: AN ORDINANCE ESTABLISHING PARKING LIMITS IN DOWNTOWN BUSINESS AREA

Notice is hereby given that the City Council of the City of Marion, Kentucky, at its regular meeting held on February 18, 2013 at 6:00 o'clock p.m., gave second reading and passed and adopted an Ordinance relating to the Marion Code of Ordinances, which Ordinance had been given its first reading at its regular meeting of the City Council held on January 14, 2013, at 6:00 o'clock p.m. A summary of the Ordinance is as follows: This Ordinance establishes parking limits at designated parking spots in the downtown business area, zoned as C-1. The City Administrator shall be charged with the authority to establish the parking spot where parking shall not be greater than fifteen (15) minutes and shall cause signs to be placed to notify the public. Any person violating this ordinance shall be guilty of a violation and shall be subject to a fine of \$10.00. The full text of the Ordinance is on file in the Office of the City Clerk in the City Building, Marion, Kentucky, where it is available for public inspection.

PREPARED BY:  
ROBERT B. FRAZER  
CITY ATTORNEY  
FRAZER ROGERS & PEEK  
ATTORNEYS - AT - LAW  
P.O. BOX 361  
MARION, KY 42064  
270/965-2261  
February 18, 2013 (1t-33-c)

Call Alma Hopkins, Rector-Hayden Re FARM - 2328 Ci Georgetown, 238 sq. ft. home, 3br, 3, just off I-75, \$1,50C Hopkins, 859-608 Hayden Realtors.

FARM - 2856 W. K) thiana, 47.9 acr ft.newer home with geothermal, 2 ba Call Alma Hopkins, Rector-Hayden Re

FARM - 3212 Lo Georgetown, 103.1 home, 4 barns, la fencing, lays well; Alma Hopkins, Rector-Hayden Re

FARM - 446 Georgetown, 97 home, large tob. ba barns, pond, good well, \$550,000. Cal 859-608-2003, Recaltors.

## statewide

### FARM FOR SALE

FARM - 1092 Indian Creek Road, Sadieville, 114 acres, older 1567 sq. ft. home, workshop, storage bldg, small creek, several small ponds, 50% wooded \$299,900.

## PUBLIC NOTICE CASE NO. 2013-00035

### NOTICE OF KENERGY CORP. STATEMENT IN EXISTING RATES

id, Henderson, KY 42420, will file an application for an Kentucky Public Service Commission in Case No. 2013- signed to flow-through to Kenergy's customers the whole- 7,265, which will result from the rate increase Big Rivers No. 2012-00535. The rates contained in this notice are however, the Kentucky Public Service Commission may in the proposed rates. Such action may result in rates sed by Kenergy and contained in this notice.

as follows:

Present Rate Schedule	Proposed Rate Schedule
2.00 per month 077904	\$ 14.40 per month \$0.09350
7.00 per month 076587	\$ 20.40 per month \$0.09192
0 KW): 5.00 per month	\$ 42.01 per month
1.44	\$ 5.33
067279	\$ 0.08075
051605	\$ 0.06194
045679	\$ 0.05482
3per KW	\$ .60 per KW

### Present Rate Schedule Proposed Rate Schedule

Not Available for New Installations after April 1, 2011:		
<b>Pedestal Mounted Pole</b>		
STEEL 25 FT PEDESTAL MT POLE	\$ 6.94	\$ 8.33
STEEL 30 FT PEDESTAL MT POLE	\$ 7.81	\$ 9.37
STEEL 39 FT PEDESTAL MT POLE	\$ 13.13	\$ 15.76
Available for New Installations after April 1, 2011:		
WOOD 30 FT DIRECT BURIAL POLE	\$ 4.35	\$ 5.22
ALUMINUM 28 FT DIRECT BURIAL	\$ 8.94	\$ 10.73
Not Available for New Installations after April 1, 2011:		
FLUTED FIBERGLASS 15 FT POLE	\$ 9.55	\$ 11.46
FLUTED ALUMINUM 14FT POLE	\$ 10.49	\$ 12.59
<b>Street Lighting Service(per month)</b>		
Not available for New Installations after April 1, 2011 - Existing Fixture will be Replaced with the Nearest Equivalent Lumen Fixture upon Failure:		
7000 LUMEN-175W-MERCURY VAPOR	\$ 8.50	\$ 10.20
20000 LUMEN-400W-MERCURY VAPOR	\$ 12.45	\$ 14.94
Available for New Installations after April 1, 2011:		
9500 LUMEN-100W-HPS STREET LGT	\$ 8.01	\$ 9.61
27000 LUMEN-250W-HPS ST LIGHT	\$ 11.89	\$ 14.27
Not Available for New Installations after April 1, 2011 - Existing Fixture will be Replaced with the Nearest Equivalent Lumen Fixture upon Failure:		
9000 LUMEN-100W MH	\$ 7.55	\$ 9.06
24000 LUMEN-400W MH	\$ 15.98	\$ 19.18
<b>Underground Service with Non-Std. Pole</b>		
UG NON-STD POLE-GOVT & DISTRICT	\$ 5.59	\$ 6.71
<b>Overhead Service to Street Lighting Districts</b>		
OH FAC-STREET LIGHT DISTRICT	\$ 2.33	\$ 2.80
<b>Decorative Underground Service</b>		
Not Available for New Installations after April 1, 2011:		
6300 LUMEN-DECOR-70W-HPS ACORN	\$ 11.04	\$ 13.25
6300 LUMEN DECOR-70W-HPS LANTERN	\$ 11.04	\$ 13.25
12600 LUMEN HPS-70W-2 DECOR FIX	\$ 19.56	\$ 23.48
Available for New Installations after April 1, 2011:		
28000 LUMEN - HPS ACORN GL 14 FT POLE	\$ 21.16	\$ 25.40
<b>Special Street Lighting Districts</b>		
Not Available for New Installations after April 1, 2011:		
BASKETT STREET LIGHTING	\$ 2.94	\$ 3.53

*Kenergy*

# Classifieds

## Legal Notices

### NOTICE OF INTENTION TO MINE

Pursuant to Application Number 913-9004

Pursuant to 350.055, notice is hereby given that Kenergy Corp., LLC, 12312 Olive Boulevard, St. Louis, Missouri, 63141, has applied for a permit to construct a coal processing facility affecting approximately 78.9 acres and no new acreage is affected by this transfer.

The operation is located approximately 1.21 miles southeast of Casey Creek, State Route KY-2094 and State Route 109 junction with State Route 1508, and adjacent to the east bank of the Ohio River. The operation is located in the Dekoven USGS 7.5 minute quadrangle map.

The operation is located on the Waverly U.S.G.S. map. The surface area to be disturbed is approximately 1.21 miles southeast of Casey Creek, State Route KY-2094 and State Route 109 junction with State Route 1508, and adjacent to the east bank of the Ohio River. The operation is located in the Dekoven USGS 7.5 minute quadrangle map. The application has been filed for public inspection at the Department for Natural Resources (DNR) Madisonville Regional Office, 625 Hospital Drive, Madisonville, Kentucky 42431-1683. Written comments or objections must be filed with the Director of the DNR Division of Mine Permits, 2 Hudson Hollow, Frankfort, Kentucky 40601-4321. All comments or objections must be received within 15 days of today's date. (11)

### NOTICE OF INTENTION TO MINE

Pursuant to Application Number 913-6003, Transfer

In accordance with the provisions of 405 KAR 8:010, notice is hereby given that Alcoa Fuels, Inc., 4700 Darlington Road, Newburgh, IN 47630 intends to transfer permit number 913-6002 to Armstrong Logistics Services, LLC, 407 Brown Road, Madisonville, KY 42431. The new Permit Number will be 913-6003. The operation disturbs 78.9 acres and no new acreage is affected by this transfer.

The operation is located 0.4 miles southwest of Caseyville in Union County, approximately three miles southwest of the State Route 109 junction with State Route 1508, and adjacent to the east bank of the Ohio River. The operation is located in the Dekoven USGS 7.5 minute quadrangle map.

The application has been filed for public inspection at the Department for Natural Resources (DNR) Madisonville Regional Office, 625 Hospital Drive, Madisonville, Kentucky 42431-1683. Written comments or objections must be filed with the Director of the DNR Division of Mine Permits, 2 Hudson Hollow, Frankfort, Kentucky 40601-4321. All comments or objections must be received within 15 days of today's date. (14)

**Subscribe Today**  
**389-1833**

**Public Notice**  
Pursuant to 405 KAR 8:010, Section 16(5), the following is a summary of permitting decisions made by the Department for Natural Resources, Division of Mine Permits with respect to applications to conduct surface coal mining and reclamation operations in Union County.  
River View Coal, LLC  
9139003  
1/29/2013 (22)

**Public Notice**  
An ordinance #02112013 of the City of Uniontown, Kentucky adopting Union County Fiscal Courts ordinance #06-01, the entire ordinance may be viewed at the City Hall in Uniontown during normal business hours. (21)

Time Warner Cable's agreements with program broadcasters to carry their services and stations will expire from time to time. We are usually able to renew or extensions of such agreements, but to comply with applicable regulations, we must you when an agreement is about to expire. The existing agreements are due to expire soon, and we are required to cease carriage of one or more of these services or stations in the near future.

El Entertainment, Encore, Encore (West), Action, Encore Action (West), Encore Drama, Drama (West), Encore Love, Encore Love (West), Suspense, Encore Suspense (West), Encore Family, Westerns, Encore Westerns (West), IFC, Lit LMN, Music Choice, NHL Center Ice, Smith HD, Starz, Starz (West), Starz Cinema, Starz C (West), Starz Edge, Starz HD, Starz in Black, Starz Kids Family, Style, WE, You Too TV, Zap2it.

Time Warner Cable will offer a Free Preview of HB Cinemax 3/29/13 - 3/31/13. It is available to all Digital subscribers and may contain PG, PG-13, TV-14, TVMA rated programs. If you wish to have this Preview blocked and for parental control information, visit [twc.com](http://twc.com) or call 1-800-TWCABLE. Programming is subject to change and not all services available in all areas. Restrictions may apply.

For up-to-date listings of our packages and channels visit our website at [www.timewarnercable.com](http://www.timewarnercable.com).

### PUBLIC NOTICE

CASE NO. 2013-00035

#### THE APPLICATION OF KENERGY CORP. FOR AN ADJUSTMENT IN EXISTING RATES

Corydon Road, Henderson, KY: 42420, will file an application for an adjustment with the Kentucky Public Service Commission in Case No. 2013-00035. The proposed rates are designed to flow-through to Kenergy's customers the wholesale cost of \$53,657,265, which will result from the rate increase Big Rivers Energy Services in Case No. 2012-00535. The rates contained in this notice are the proposed rates; however, the Kentucky Public Service Commission may order a different rate from the proposed rates. Such action may result in rates for members of the public that differ from the proposed rates and contained in this notice.

	Present Rate Schedule	Proposed Rate Schedule
<b>Single &amp; Three-Phase:</b>		
Delivery Point	\$12.00 per month	\$ 14.40 per month
	\$0.077904	\$0.09350
<b>Single Phase:</b>		
Delivery Point	\$ 17.00 per month	\$ 20.40 per month
	\$0.076587	\$0.09192
<b>Points (0 - 1,000 KW):</b>		
Delivery Point	\$ 35.00 per month	\$ 42.01 per month
	\$ 4.44	\$ 5.33
per KWH	\$ 0.067279	\$ 0.08075
per KWH	\$ 0.051605	\$ 0.06194
per KWH	\$ 0.045679	\$ 0.05482
	\$ .50 per KW	\$ .60 per KW

### Present Rate Schedule Proposed Rate Schedule

	Present Rate Schedule	Proposed Rate Schedule
<b>Not Available for New Installations after April 1, 2011:</b>		
<b>Pedestal Mounted Pole</b>		
STEEL 25 FT PEDESTAL MT POLE	\$ 6.94	\$ 8.3
STEEL 30 FT PEDESTAL MT POLE	\$ 7.81	\$ 9.3
STEEL 39 FT PEDESTAL MT POLE	\$ 13.13	\$ 15.7
<b>Available for New Installations after April 1, 2011:</b>		
WOOD 30 FT DIRECT BURIAL POLE	\$ 4.35	\$ 5.2
ALUMINUM 28 FT DIRECT BURIAL	\$ 8.94	\$ 10.7
<b>Not Available for New Installations after April 1, 2011:</b>		
FLUTED FIBERGLASS 15 FT POLE	\$ 9.55	\$ 11.41
FLUTED ALUMINUM 14FT POLE	\$ 10.49	\$ 12.51
<b>Street Lighting Service(per month)</b>		
<b>Not available for New Installations after April 1, 2011 - Existing Fixture will be Replaced with 1 Nearest Equivalent Lumen Fixture upon Failure:</b>		
7000 LUMEN-175W-MERCURY VAPOR	\$ 8.50	\$ 10.21
20000 LUMEN-400W-MERCURY VAPOR	\$ 12.45	\$ 14.94
<b>Available for New Installations after April 1, 2011:</b>		
9500 LUMEN-100W-HPS STREET LGT	\$ 8.01	\$ 9.6
27000 LUMEN-250W-HPS ST LIGHT	\$ 11.89	\$ 14.27
<b>Not Available for New Installations after April 1, 2011 - Existing Fixture will be Replaced with 2 Nearest Equivalent Lumen Fixture upon Failure:</b>		
9000 LUMEN-100W MH	\$ 7.55	\$ 9.06
24000 LUMEN-400W MH	\$ 15.98	\$ 19.18
<b>Underground Service with Non-Std. Pole</b>		
UG NON-STD POLE-GOVT & DISTRICT	\$ 5.59	\$ 6.71
<b>Overhead Service to Street Lighting Districts</b>		
OH FAC-STREET LIGHT DISTRICT	\$ 2.33	\$ 2.80
<b>Decorative Underground Service</b>		
<b>Not Available for New Installations after April 1, 2011:</b>		
6300 LUMEN-DECOR-70W-HPS ACORN	\$ 11.04	\$ 13.25
6300 LUMEN DECOR-70W-HPS LANTERN	\$ 11.04	\$ 13.25
12600 LUMEN HPS-70W-2 DECOR FIX	\$ 19.56	\$ 23.48
<b>Available for New Installations after April 1, 2011:</b>		
28000 LUMEN - HPS ACORN GL 14 FT POLE	\$ 21.16	\$ 25.40
<b>Special Street Lighting Districts</b>		
<b>Not Available for New Installations after April 1, 2011:</b>		

**0856 Sport Utility Vehicles**  
 Ford Edge LTD '11, AWD, black, 50K mi. \$26,500 Great Cond! 314-8118

GMC Jimmy 1992, New Starter, Good Tires! Runs & Looks Good! \$3,250. 264-1785 or 925-8627

GMC Yukon Chassis '01 3rd Row 4x4, fully loaded, leather, DVD, 160K mi. \$7,000/lim. 925-7157

Toyota Highlander '09 4x4, 3rd row seating, 71K mi. \$18,600. 315-7984

Toyota Highlander '04 LTD, 3rd row seat, extra clean \$9,800. 276-9131

**0861 Trucks for Sale**  
 Chevy 1600 HD '02 Crew Cab, 4x4, 180K, loaded. \$8,600. 314-9009

Chevy Avalanche '04 114K mi, sun roof, heated seats, new tires \$12,600. Call 314-2840

Ford F-150 Heritage '03 4x4, ext. cab, 5.4L, Extra Clean \$8,995. 276-9131

Ford F-250 Lariat 2005 AWD Super Duty Crew Cab, 4 dr., 6 liter, diesel, Auto, loaded, leather seats, tonneau hard cover, 130K mi. \$16,500. Call 270-929-9159

Ford F250 Lariat '11 Diesel, white, loaded, new tires, 70K miles. \$34,500. 270-318-7578

Ford F250 5.0 FIA Crew Cab, 112K mi, All Power windows, dual disc, Good Mary updates. \$19,600. Call 313-7510

**0864 Trucks for Sale**  
 Ford Lariat '07 Super Cab, 4x4, loaded, 72K, 1 owner, \$17,500. See @ 1722 Triplett St. 314-9404

GMC extended cab 4x4 Z71 '98 Auto, air, 3rd door, 214K mi., serviced every 4,000 miles \$4,500. Call 316-5478 or 316-4211

**0868 Cars for Sale**  
 Cadillac CTS '03, Silver, 97K miles for \$7,995. Call (270)993-6293

Chevy Malibu LS '99 4 door, 131K, Nice Car! \$3500. 925-3806

Dodge Avenger Sport '99 Great condition! \$4,100. 231-6159

Ford Taurus Limited '10 72K, loaded, SHARP \$13,995. 270-275-9131

Ford Taurus Wagon '00 low miles, 93K, One owner. \$4,200. 929-1402

GRAND AM GT 2004 \$4,900. See @ 2326 W. 2nd St.

Mercury Sable '03, All Power, 128K, Clean. \$4,000. (270)313-1750.

**0872 Classic/Sports/Collector Cars**  
 OWENSBORO MOTOR  
 1600 W. 2nd St. 685-1638  
 '05 Grand Marquis \$8,990;  
 '02 Mustang Convertible \$8,990;  
 '02 Monte Carlo SS \$5,990;  
 '02 Town Car \$5,990; '00 Solara \$6,990; 04 LS \$5,990; TRUCKS & VANS '02 F-150 Crew Cab \$10,990;  
 '04 Trail Blazer 4x4 \$9,990;  
 '03 Sport Track 4x4 \$9,990;  
 '02 Navigator 4x4 \$8990; '05 Pacifica \$8,990; '03 Escape \$6,990;  
 '00 Sienna \$5,990 '98 Grand Cherokee \$4,990; '99 Explorer \$3,450; '98 E-150 \$3,990; '92 F-150 SC, 4x4, \$2,990; '94 C-1500 X-Cab \$2,450.

Wanted to Buy- Impalla '06 LT or LTZ 270-485-4895

**0872 Classic/Sports/Collector Cars**  
 70 Kamann Ghia Coupe project, new parts, \$2,500 obo 91 S-10, V6, \$2,200 obo, '98 Blazer, 2dr., \$4,000 obo 270-685-0238 or 929-2951

**0880 Off Road Vehicles**  
 Kawasaki Mule '01 good tires & battery, \$4,000. 270-295-7253

For Sale Austin Work Room. Set blinds. We fabricate spreads, all kinds for home. If into with start-up. C 270-929-0975

**You'll Find it FIRST In The Classifieds**

**Something Missing? Let us help you find it!**

**CONSIDER IT SOLD CLASSIFIEDS**

926-6161  
800-633-2008

**LEGAL NOTICE FOR RFP 02-2013 REQUEST PROPOSALS OWENSBORO RIVERPORT AUTHORITY**

Notice is hereby given that the Owensboro Riverport Authority is requesting proposals for: RAILROAD ACCESS REPAIR. A MANDATORY meeting to discuss the scope of work will be held at 2300 Harbor Road, Owensboro, Kentucky 42301, on Thursday, March 14, 2013 at 8:00 a.m. All proposals shall be submitted by Kentucky Transportation Cabinet prequalified contractors before 2:00 p.m., local time, Tuesday, April 9, 2013. All late proposals will be returned unopened. Owensboro Riverport Authority reserves the right to postpone, accept or reject any and all proposals and to waive any informality in the RFP process as Owensboro Riverport Authority deems in its own best interest.

**Chilled Water System Replacement BID #2856**

The City of Owensboro is seeking a reputable contract of a 25 ton roof top chiller and chilled water system for the Museum of Fine Arts, 901 Frederica Street in Owensboro pre-bid meeting held at 9:00 a.m. prevailing local time 2012 at the Owensboro Museum of Fine Arts. Although mandatory, attendance is strongly encouraged as the sites will be available for inspection. Specification file and may be obtained RBS Design Group, P.S.I Owensboro, KY 42301, 270-683-1158, upon deposit Dollars for each set of documents. Additional sets in cost of One Hundred and Fifty Dollars per set, non-check will be required of all bidders to whom an award direct or through the prime contractor. Check covering payable to the order of RBS Design Group, P.S.C. Big the Purchasing Department on or before 2:00 P.M. Thursday, March 14, 2013. The City of Owensboro reserves the right to accept or reject any and all proposals and to waive any irregular

Pamela Canary, Purchasing Agent

**Classifieds Get The Job Done**

**LEGAL NOTICE FOR RFP 01-2013 REQUEST FOR PROPOSALS OWENSBORO RIVERPORT AUTHORITY**

Notice is hereby given that the Owensboro Riverport Authority is requesting proposals for: ENTRANCE ROAD REPLACEMENT AND ASPHALT RESURFACE PROJECT. A MANDATORY meeting to discuss the scope of work will be held at 2300 Harbor Road, Owensboro, Kentucky 42301, on March 13, 2013 at 8:00 a.m. All proposals shall be submitted by Kentucky Transportation Cabinet prequalified contractors before 2:00 p.m., local time, Tuesday, April 9, 2013. All late proposals will be returned unopened. Owensboro Riverport Authority reserves the right to postpone, accept or reject any and all proposals and to waive any informality in the RFP process as Owensboro Riverport Authority deems in its own best interest.

**PUBLIC NOTICE CASE NO. 2013-00035**

**THE APPLICATION OF KENERGY CORP. FOR AN ADJUSTMENT IN EXISTING RATES**

4402 Old Conroy Road, Henderson, KY 42420, will file an application for an adjustment of rates with the Kentucky Public Service Commission in Case No. 2013-00035. The proposed rates are designed to allow through to Kenergy's customers the wholesale power expense of \$0.077904, which will result from the rate increase Big Rivers Electric Corporation proposed in Case No. 2012-00035. The rates contained in this notice are the rates proposed by Kenergy to the Kentucky Public Service Commission. The Public Service Commission may order rates to be charged that differ from those proposed. Such action may result in rates for members other than the rates proposed by Kenergy. The proposed rates are as follows:

	Present Rate Schedule	Proposed Rate Schedule
Residential Single Phase	\$12.00 per month	\$14.40 per month
Residential Single Phase	\$0.077904	\$0.093500
Residential Single Phase	\$17.00 per month	\$20.40 per month
Residential Single Phase	\$0.076587	\$0.09192
Residential Single Phase (1,000 KW)	\$35.00 per month	\$42.01 per month
Commercial Single Phase	\$4.44	\$5.33
Commercial Single Phase	\$0.067279	\$0.08075
Commercial Single Phase	\$0.041605	\$0.06194
Commercial Single Phase	\$0.045679	\$0.05482
Commercial Single Phase	\$1.00 per KW	\$1.60 per KW

	Present Rate Schedule	Proposed Rate
<b>Not Available for New Installations after April 1, 2011:</b>		
<b>Pedestal Mounted Pole</b>		
STEEL 25 FT PEDESTAL MT POLE	\$ 6.94	\$
STEEL 30 FT PEDESTAL MT POLE	\$ 7.81	\$
STEEL 39 FT PEDESTAL MT POLE	\$ 13.13	\$
<b>Available for New Installations after April 1, 2011:</b>		
WOOD 30 FT DIRECT BURIAL POLE	\$ 4.35	\$
ALUMINUM 28 FT DIRECT BURIAL	\$ 8.94	\$
<b>Not Available for New Installations after April 1, 2011:</b>		
FLUTED FIBERGLASS 15 FT POLE	\$ 9.55	\$
FLUTED ALUMINUM 14FT POLE	\$ 10.49	\$
<b>Street Lighting Service(per month)</b>		
<b>Not available for New Installations after April 1, 2011 - Existing Fixture will be Replaced Nearest Equivalent Lumen Fixture upon Failure:</b>		
7000 LUMEN-175W-MERCURY VAPOR	\$ 8.50	\$
20000 LUMEN-400W-MERCURY VAPOR	\$ 12.45	\$
<b>Available for New Installations after April 1, 2011:</b>		
9500 LUMEN-100W-HPS STREET LGT	\$ 8.01	\$
27000 LUMEN-250W-HPS ST LIGHT	\$ 11.89	\$
<b>Not Available for New Installations after April 1, 2011 - Existing Fixture will be Replaced Nearest Equivalent Lumen Fixture upon Failure:</b>		
9000 LUMEN-100W MH	\$ 7.55	\$
24000 LUMEN-400W MH	\$ 15.98	\$
<b>Underground Service with Non-Std. Pole</b>		
UG NON-STD POLE-GOVT & DISTRICT	\$ 5.59	\$
<b>Overhead Service to Street Lighting Districts</b>		
OH FAC-STREET LIGHT DISTRICT	\$ 2.33	\$
<b>Decorative Underground Service</b>		
<b>Not Available for New Installations after April 1, 2011:</b>		
6300 LUMEN-DECOR-70W-HPS ACORN	\$ 11.04	\$
6300 LUMEN DECOR-70W-HPS LANTERN	\$ 11.04	\$
12600 LUMEN HPS-70W-2 DECOR FIX	\$ 19.56	\$
<b>Available for New Installations after April 1, 2011:</b>		
28000 LUMEN - HPS ACORN GL 14 FT POLE	\$ 21.16	\$
<b>Special Street Lighting Districts</b>		
<b>Not Available for New Installations after April 1, 2011:</b>		
BASKETT STREET LIGHTING	\$ 2.94	\$
MFADON HILL STREET LIGHTING	\$ 2.68	\$

<p><b>Home Electronics</b></p> <p><b>Sony TV</b> Large screen in cabinet. 16 speakers. (2002) Call 270-886-2256.</p> <p><b>Something/Jewelry</b></p> <p><b>Dooney and Bourke</b> A giraffe print necklace and Bourke necklace. Red interior. Two pockets in front, zipper compartments and a cell phone. Asking \$100. 139-3323.</p>	<p><b>Clothing/Jewelry</b></p> <p><b>Dooney and Bourke</b> Large Dooney and Bourke purse. Giraffe print. Red interior. Two large pockets in front. Two zipper compartments and one cell phone pocket. Excellent condition. Like new. 270-839-2232.</p> <p><b>Miscellaneous</b></p> <p><b>Bug deflector</b> Bug guard fits Silverado Truck \$35.00 Call 270-484-5197.</p>	<p><b>Miscellaneous</b></p> <p><b>Board Games</b> Board games for sale. Several different board games including... Channel Surfing, Scene It?, Ultimate TV Trivia, I Love the 80s, Would You Rather and CSI. Asking \$30 for the lot. 270-839-2232.</p> <p><b>Firewood</b> For sale. 270-365-3603 or 270-625-8341</p> <p><b>High Speed Internet</b> \$39.99 per month. Call Beasley Antenna &amp; Satellite at 877-726-4077</p>	<p><b>Miscellaneous</b></p> <p><b>Jeff Gordon</b> The early years 18 x 24 print \$50.00 call 270-885-3775 or 889-7715.</p> <p><b>Lot For Sale</b> At Riverside cemetery. Paid \$1090. Make offer. 270-885-8082</p> <p><b>Magazines</b> Just Cross stitch, Country Cross Stitch, Cross Switcher 20 magazines for \$20.00 270-885-7789.</p>	<p><b>Miscellaneous</b></p> <p><b>Metal Storage</b> Shelving 88 1/4 x 42 x 18. Heavy duty. No nuts or bolts. 5 Openings, 5 Units. \$200 each. 270-522-9789.</p> <p><b>Ping Pong Table</b> Full size ping pong table in great shape. \$75.00 Call 270-839-7944.</p> <p><b>Sears Sewing Machine</b> Zig zag with instruction book. In wood cabinet. \$100. 270-886-8035.</p>	<p><b>Miscellaneous</b></p> <p><b>Sawmills</b> From only \$3997. Make/save money with your own bandmill. Cut lumber any dimension. In stock ready to ship. FREE Info/DVD: www.NorwoodSawmills.com 1-800-578-1363 Ext.300N</p>	<p><b>Miscellaneous</b></p> <p><b>Two Beautiful Tru</b> Bird pictures. The print size is 20" x 16" Oven-birds and Pink Lady's Slipper. Water Thrushes and Yellow Lady's Slipper. R.L Conner 1975. Purchased from Staten Decorating. Paid over \$100.00 each, asking \$25.00 each OBO. 270-886-4514.</p>
--	--	---	---	--	---	---

**Medical**

**Injection**

Call 270-886-2256

**Yard Sale**

**Sat., Feb. 23 • 8 a.m.-?**

106 East Main Street, Princeton

**Proceeds To Benefit**  
**Good Samaritan House of Hope**  
**Building Fund**

Ann's Floral Shop will also be holding an inventory reduction sale next door.

**To donate an item contact**  
**Amy Lewis 270-704-6609**

**ABC Finance will hold a public sale on Monday, February 25, 2013 at 10:00 a.m.**

**For Sale "AS IS" will be:**

**1993 Ford Ranger**

2 wheel drive  
VIN 1FTCR14U3PPB65791

Can be seen at  
**430 HWY 62 WEST**  
**PRINCETON, KY 42445**

ABC Finance reserves the right to refuse any and all bids.

**O/O Looking for Something Different? Check Out B-LAK EXPRESS LLC**

- CDL/A REQUIRED
- SIGN-ON BONUS
- LOTS OF DROP & HOOK
- EXCELLENT OPPORTUNITIES

Call 800-544-9078

**B-LAK EXPRESS LLC**

**FAX**

**We can send your**

The Times Lea  
will send your FAX

**ONLY \$1 per**

Just bring in your docu  
our friendly staff will be  
sist you.

**THE TIMES LEADER**

607 W. Washington St.  
Princeton, KY 42445  
270-365-5588

Mond  
7 a.m

**Public Notice**

**PUBLIC NOTICE**  
CASE NO: 2013-00035

**APPLICATION OF KENERGY CORP.  
AN ADJUSTMENT IN EXISTING RATES**

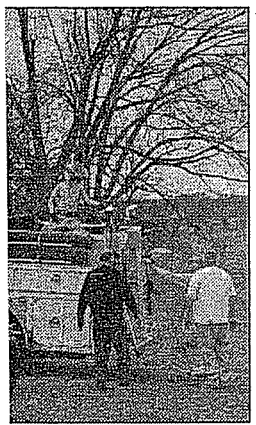
Don Road, Henderson, KY 42420, will file an application for an adjust-  
Kentucky Public Service Commission in Case No. 2013-00035. The pro-  
flow-through to Kenergy's customers the wholesale power expense  
will result from the rate increase Big Rivers Electric Corporation propos-  
rates contained in this notice are the rates proposed by Kenergy  
Public Service Commission may order rates to be charged that differ from  
n may result in rates for members other than the rates proposed by  
notice.

rates are as follows:

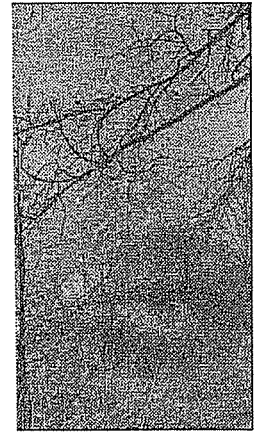
	<u>Present Rate Schedule</u>	<u>Proposed Rate Schedule</u>
<b>Phase:</b>		
<b>Base Point</b>	\$12.00 per month \$0.077904	\$14.40 per month \$0.09350
<b>Phase:</b>		
<b>Base Point</b>	\$17.00 per month \$0.076587	\$20.40 per month \$0.09192
<b>Base Point</b>		
<b>Base Point</b>	\$35.00 per month	\$42.01 per month
	\$4.44	\$5.33
<b>Base Point</b>	\$0.067279	\$0.08075
<b>Base Point</b>	\$0.051605	\$0.06194
<b>Base Point</b>	\$0.045679	\$0.05482
	\$ .50 per KW	\$ .60 per KW

	<u>Present Rate Schedule</u>	<u>Proposed Rate Sch</u>
<b>Not Available for New Installations after April 1, 2011:</b>		
<b>Pedestal Mounted Pole</b>		
STEEL 25 FT PEDESTAL MT POLE	\$ 6.94	\$ 8.31
STEEL 30 FT PEDESTAL MT POLE	\$ 7.81	\$ 9.31
STEEL 39 FT PEDESTAL MT POLE	\$ 13.13	\$ 15.71
<b>Available for New Installations after April 1, 2011:</b>		
WOOD 30 FT DIRECT BURIAL POLE	\$ 4.35	\$ 5.21
ALUMINUM 28 FT DIRECT BURIAL	\$ 8.94	\$ 10.71
<b>Not Available for New Installations after April 1, 2011:</b>		
FLUTED FIBERGLASS 15 FT POLE	\$ 9.55	\$ 11.46
FLUTED ALUMINUM 14 FT POLE	\$ 10.49	\$ 12.56
<b>Street Lighting Service(per month)</b>		
<b>Not available for New Installations after April 1, 2011 - Existing Fixture will be Replaced with Nearest Equivalent Lumen Fixture upon Failure:</b>		
7000 LUMEN-175W-MERCURY VAPOR	\$ 8.50	\$ 10.20
20000 LUMEN-400W-MERCURY VAPOR	\$ 12.45	\$ 14.94
<b>Available for New Installations after April 1, 2011:</b>		
9500 LUMEN-100W-HPS STREET LGT	\$ 8.01	\$ 9.61
27000 LUMEN-250W-HPS ST LIGHT	\$ 11.89	\$ 14.27
<b>Not Available for New Installations after April 1, 2011 - Existing Fixture will be Replaced with Nearest Equivalent Lumen Fixture upon Failure:</b>		
9000 LUMEN-100W MH	\$ 7.55	\$ 9.06
24000 LUMEN-400W MH	\$ 15.98	\$ 19.18
<b>Underground Service with Non-Std. Pole</b>		
UG NON-STD POLE-GOVT & DISTRICT	\$ 5.59	\$ 6.71
<b>Overhead Service to Street Lighting Districts</b>		
OH FAC-STREET LIGHT DISTRICT	\$ 2.33	\$ 2.80
<b>Decorative Underground Service</b>		
<b>Not Available for New Installations after April 1, 2011:</b>		
6300 LUMEN-DECOR-70W-HPS ACORN	\$ 11.04	\$ 13.25
6300 LUMEN DECOR-70W-HPS LANTERN	\$ 11.04	\$ 13.25
12600 LUMEN HPS-70W-2 DECOR FIX	\$ 19.56	\$ 23.48
<b>Available for New Installations after April 1, 2011:</b>		
28000 LUMEN - HPS ACORN GL 14 FT POLE	\$ 21.16	\$ 25.40
<b>Special Street Lighting Districts</b>		
<b>Not Available for New Installations after April 1, 2011:</b>		
BASKETT STREET LIGHTING	\$ 2.94	\$ 3.53

nergy



**Fire Department lay to fight one of travel from Martin nberland Cemetery**



**Flames burned through a field and into the hillside along Old Slaughters Road, off of 138 near Dixon. So after this photo was taken heavy rains moved into the area and helped fire fighters finish the job they had started.**  
(J-E photo by Matt Hughes)

**PUBLIC NOTICE  
NO. 2013-00035**

**ANNOUNCEMENT OF KENERGY CORP.  
ADJUSTMENT IN EXISTING RATES**

Henderson, KY 42420, will file an application for an order with the Kentucky Public Service Commission in Case No. 2013-00035, which will result from the rate increase Big Rivers 2012-00535. The rates contained in this notice are proposed rates. Such action may result in rates by Kenergy and contained in this notice.

as follows:

Present Rate Schedule	Proposed Rate Schedule
0 per month 7904	\$ 14.40 per month \$0.09350
10 per month 3587	\$ 20.40 per month \$0.09192
KW): 00 per month	\$ 42.01 per month
14	\$ 5.33

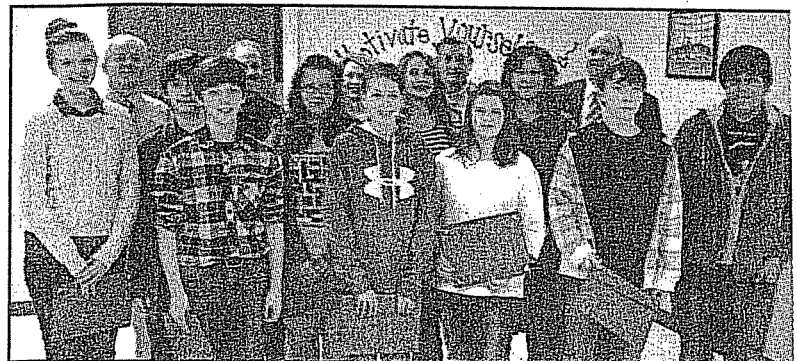
	Present Rate Schedule	Proposed Rate Schedule
<b>Not Available for New Installations after April 1, 2011:</b>		
<b>Pedestal Mounted Pole :</b>		
STEEL 25 FT PEDESTAL MT POLE	\$ 6.94	\$ 8.33
STEEL 30 FT PEDESTAL MT POLE	\$ 7.81	\$ 9.37
STEEL 39 FT PEDESTAL MT POLE	\$ 13.13	\$ 15.76
<b>Available for New Installations after April 1, 2011:</b>		
WOOD 30 FT DIRECT BURIAL POLE	\$ 4.35	\$ 5.22
ALUMINUM 28 FT DIRECT BURIAL	\$ 8.94	\$ 10.73
<b>Not Available for New Installations after April 1, 2011:</b>		
FLUTED FIBERGLASS 15 FT POLE	\$ 9.55	\$ 11.46
FLUTED ALUMINUM 14FT POLE	\$ 10.49	\$ 12.59
<b>Street Lighting Service(per month)</b>		
<b>Not available for New Installations after April 1, 2011 - Existing Fixture will be Replaced with the Nearest Equivalent Lumen Fixture upon Failure:</b>		
7000 LUMEN-175W-MERCURY VAPOR	\$ 8.50	\$ 10.20
20000 LUMEN-400W-MERCURY VAPOR	\$ 12.45	\$ 14.94
<b>Available for New Installations after April 1, 2011:</b>		
9500 LUMEN-100W-HPS STREET LGT	\$ 8.01	\$ 9.61
27000 LUMEN-250W-HPS ST LIGHT	\$ 11.89	\$ 14.27
<b>Not Available for New Installations after April 1, 2011 - Existing Fixture will be Replaced with the Nearest Equivalent Lumen Fixture upon Failure:</b>		
9000 LUMEN-100W MH	\$ 7.55	\$ 9.06
24000 LUMEN-400W MH	\$ 15.98	\$ 19.18
<b>Underground Service with Non-Std. Pole</b>		
UG NON-STD POLE-GOVT & DISTRICT	\$ 5.59	\$ 6.71
<b>Overhead Service to Street Lighting Districts</b>		
OH FAC-STREET LIGHT DISTRICT	\$ 2.33	\$ 2.80
<b>Decorative Underground Service</b>		
<b>Not Available for New Installations after April 1, 2011:</b>		
6300 LUMEN-DECOR-70W-HPS ACORN	\$ 11.04	\$ 13.25
6300 LUMEN DECOR-70W-HPS LANTERN	\$ 11.04	\$ 13.25
12600 LUMEN HPS-70W-2 DECOR FIX	\$ 19.56	\$ 23.48

**ers available  
Citizen**

Center in Marion, Ky will  
Saturday, March 2, 2013  
of Crittenden and Liv-  
the day of handout. The  
cat at the several partier-  
s are limited, there will be  
ouchers are good for 90  
mat Clinic (Marion), Fla-  
on County Animal Hospi-  
Clinic (Princeton) Rogers  
Veterinary Clinic (Stur-  
vidence), Williams Veter-

**LCMS students recognized for outstanding performance on EXPLORE tes**

Sixteen Livingston County Middle School students were recognized at the February board of education meeting for their outstanding performance on the EXPLORE test. The EXPLORE test is a precursor to the ACT test and serves to measure the educational progress of students to being college and career ready. Data gained from the test may suggest that schools adjust programs, institute teaching strategies, make interventions for individual students as well as groups of students for the goal is that every student be college/career ready when he or she graduates.



From the results of the last EXPLORE test taken in the fall, the following LCMS students are on track to being college and career ready: Cierra Henry, Chaney Adams, Brenden Mitchell, Tristen Brown, Ashton Dove, Bobby Sayle, Alexis Molina, Kalynn Campbell, Tyler Ray, Zack Wood, Rache Chery, Emily Owens, Lauren Schmitt, Hailey Stafford, Jacob Snead and Cameron Bryan. The Livingston County Board of Education is proud of these students and presented them with a certificate of outstanding achievement for their accomplishments

**PUBLIC NOTICE  
CASE NO. 2013-00035**

**ICATION OF KENERGY CORP.  
JUSTMENT IN EXISTING RATES**  
Henderson, KY 42420 will file an application for an adjust-  
Public Service Commission in Case No. 2013-00035. The pro-  
ough to Kenergy's customers the wholesale power expense  
t from the rate increase Big Rivers Electric Corporation propos-  
contained in this notice and the rates proposed by Kenergy  
Service Commission may order rates to be charged that differ from  
result in rates for members other than the rates proposed by

Present Rate Schedule	Proposed Rate Schedule
\$12.00 per month	\$14.40 per month
\$0.077904	\$0.09350
\$17.00 per month	\$20.40 per month
\$0.078887	\$0.09192
\$35.00 per month	\$42.01 per month
\$4.44	\$5.33
\$6.507270	\$0.08075
\$0.061608	\$0.06194
\$0.045573	\$0.05482
\$0.04466	\$0.60 per KW
\$75.00 per month	\$90.15 per month
\$11.26	\$11.26
\$0.04818	\$0.04818
\$0.04425	\$0.04425

	Present Rate Schedule	Proposed Rate Schedule
<b>Not Available for New Installations after April 1, 2011:</b>		
<b>Pedestal Mounted Pole</b>		
STEEL 25 FT PEDESTAL MT POLE	\$ 6.94	\$ 8.33
STEEL 30 FT PEDESTAL MT POLE	\$ 7.81	\$ 9.37
STEEL 39 FT PEDESTAL MT POLE	\$ 13.13	\$ 15.76
<b>Available for New Installations after April 1, 2011:</b>		
WOOD 30 FT DIRECT BURIAL POLE	\$ 4.35	\$ 5.22
ALUMINUM 28 FT DIRECT BURIAL	\$ 8.94	\$ 10.73
<b>Not Available for New Installations after April 1, 2011:</b>		
FLUTED FIBERGLASS 15 FT POLE	\$ 9.55	\$ 11.46
FLUTED ALUMINUM 14FT POLE	\$ 10.49	\$ 12.59
<b>Street Lighting Service(per month)</b>		
<b>Not available for New Installations after April 1, 2011 - Existing Fixture will be Replaced with the Nearest Equivalent Lumen Fixture upon Failure:</b>		
7000 LUMEN-175W-MERCURY VAPOR	\$ 8.50	\$ 10.20
20000 LUMEN-400W-MERCURY VAPOR	\$ 12.45	\$ 14.94
<b>Available for New Installations after April 1, 2011:</b>		
9500 LUMEN-100W-HPS STREET LGT	\$ 8.01	\$ 9.61
27000 LUMEN-250W-HPS ST LIGHT	\$ 11.89	\$ 14.27
<b>Not Available for New Installations after April 1, 2011 - Existing Fixture will be Replaced with the Nearest Equivalent Lumen Fixture upon Failure:</b>		
9000 LUMEN-100W MH	\$ 7.55	\$ 9.06
24000 LUMEN-400W MH	\$ 15.98	\$ 19.18
<b>Underground Service with Non-Std. Pole</b>		
UG NON-STD POLE-GOVT & DISTRICT	\$ 5.59	\$ 6.71
<b>Overhead Service to Street Lighting Districts</b>		
OH FAC-STREET LIGHT DISTRICT	\$ 2.33	\$ 2.80
<b>Decorative Underground Service</b>		
<b>Not Available for New Installations after April 1, 2011:</b>		
6300 LUMEN-DECOR-70W-HPS ACORN	\$ 11.04	\$ 13.25
6300 LUMEN DECOR-70W-HPS LANTERN	\$ 11.04	\$ 13.25
12600 LUMEN HPS-70W-2 DECOR FIX	\$ 19.56	\$ 23.48
<b>Available for New Installations after April 1, 2011:</b>		
28000 LUMEN - HPS ACORN GL 14 FT POLE	\$ 21.16	\$ 25.40
<b>Special Street Lighting Districts</b>		
<b>Not Available for New Installations after April 1, 2011:</b>		
BASKETT STREET LIGHTING	\$ 2.94	\$ 3.53
MEADOW HILL STREET LIGHTING	\$ 2.68	\$ 3.22
SPOTTSVILLE STREET LIGHTING	\$ 3.32	\$ 3.98
	<b>Present Rate Schedule</b>	<b>Proposed Rate Schedule</b>
<b>Renewable Resource Energy Service Rider</b>		
Per Kilowatt Hour Premium of:		
Non-Direct Served Customers:		
per Kilowatt Hour Premium of:	\$ 0.026722	\$ 0.026088
Direct Served Customers (excluding Class A)	\$ 0.030495	\$ 0.025
<b>Large Industrial Customers Served Under Special Contract</b>		
<b>Dedicated Delivery Points (Class A)</b>		
Base Energy Charge per KWH	\$ 0.039480	\$ 0.047648