



# Meade County RECC

P.O. Box 489  
Brandenburg, KY 40108-0489  
(270) 422-2162  
Fax: (270) 422-4705

5/19/14

Mr. Jeff Derouen  
Executive Director  
Kentucky Public Service Commission  
211 Sower Blvd.  
P.O. Box 615  
Frankfort KY 40602-0615

RECEIVED

MAY 21 2014

PUBLIC SERVICE  
COMMISSION

RE: Case No. 2012-00310  
Case No. 2012-00311  
Case No. 2012-00312

Dear Mr. Derouen:

Please find the substation and downline voltage charts requested during the 5/14/14 telephone conference call regarding case numbers 2012 -00310, 00311, and 00312. Pages 1-9 are charts of the three phase voltages at the Battletown substation for June-July 2008, February-March 2010, and March-April 2014. The first two sets represent the time before Hilltop Quarry's upgrade, which took place in the last quarter of 2011. The third set is charts during the last period of PSC requested downline monitoring.

The final two pages, 10 and 11, are annual downline monitoring charts for 2008 and 2011, both occurring before Hilltop's upgrade. These charts are the results of recordings performed on a different feeder than the one supplying the quarry and the complainants.

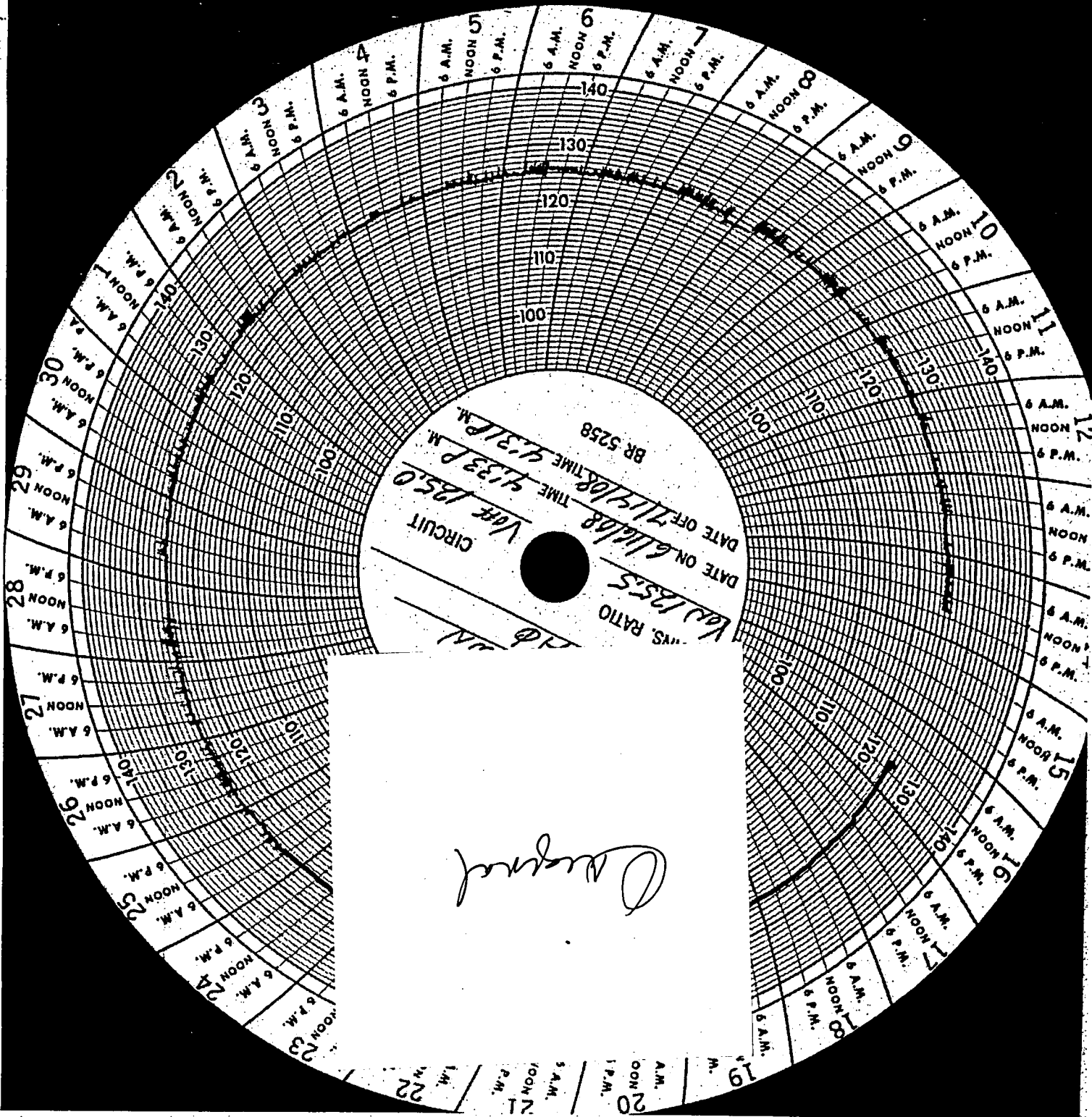
The patterns are the same as the ones depicted in prior monitoring on the Big Bend feeder, which shows more voltage fluctuation during the business hours as compared to non-business times. You will also note the difference in the two types of charts. The downline charts are from a digital recorder which detects the slightest variation whereas the substation charts are the result of older pen-type chart recorders that do not react or recover as quickly.

As per the Commission's request, we are submitting the attached data and ten (10) copies. A copy of this letter and the data will be sent to Mona Corrin Jarboe, Steven L. Miles and David Ballentine Bell at their addresses via first class mail.

If you have any questions, please do not hesitate to contact us.

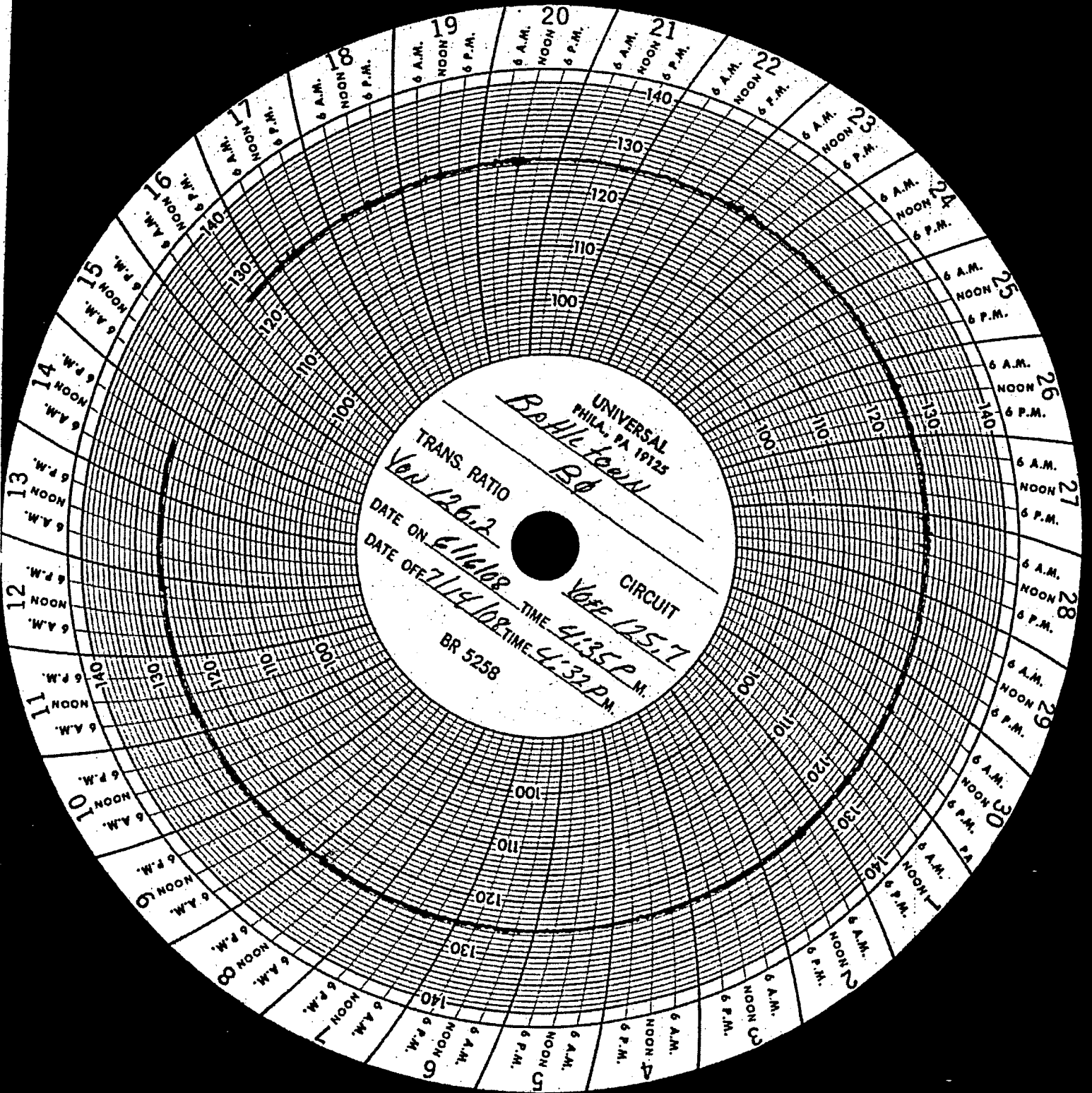
Sincerely,

David R. Poe  
Vice President of Operations & Engineering

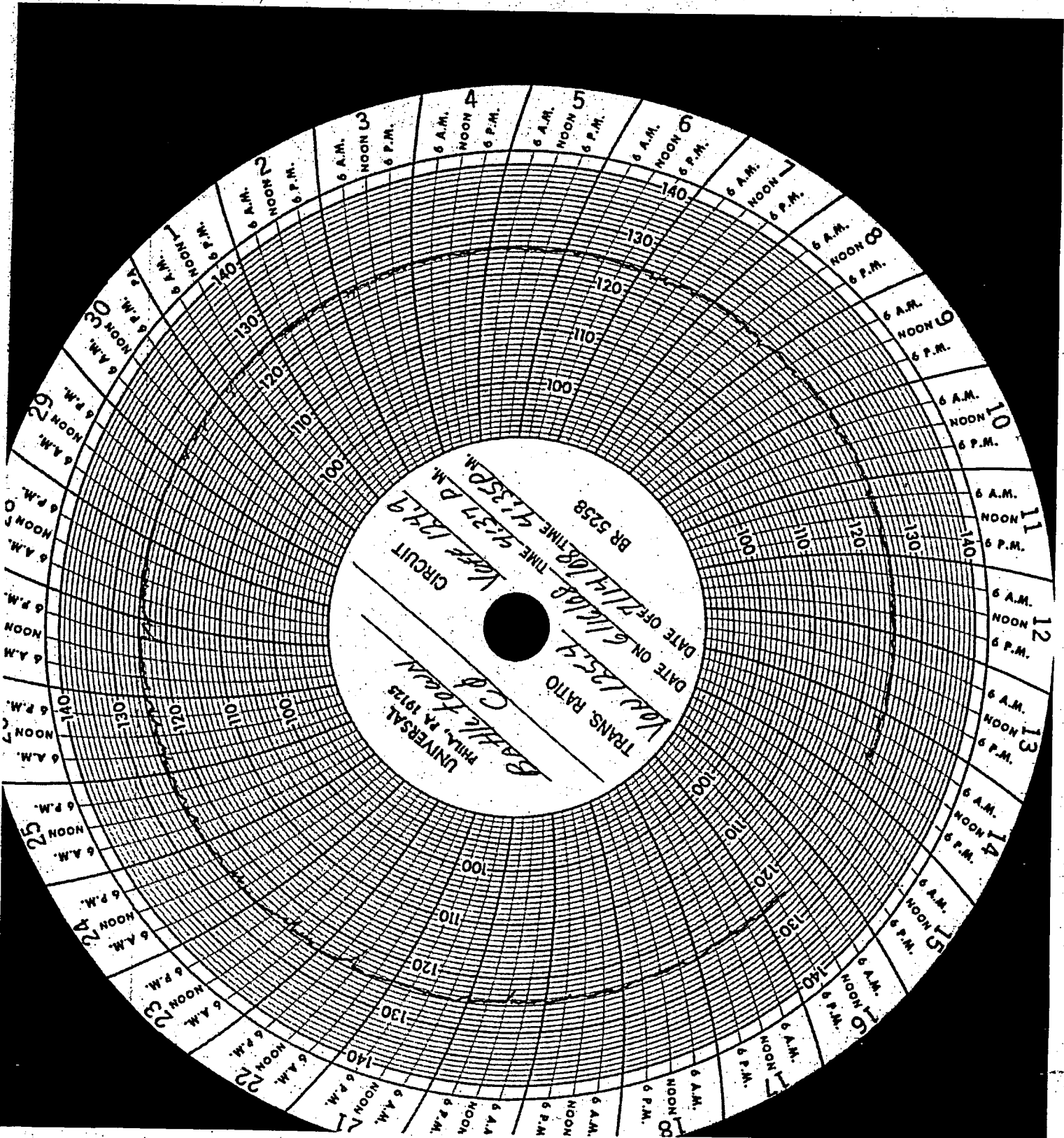


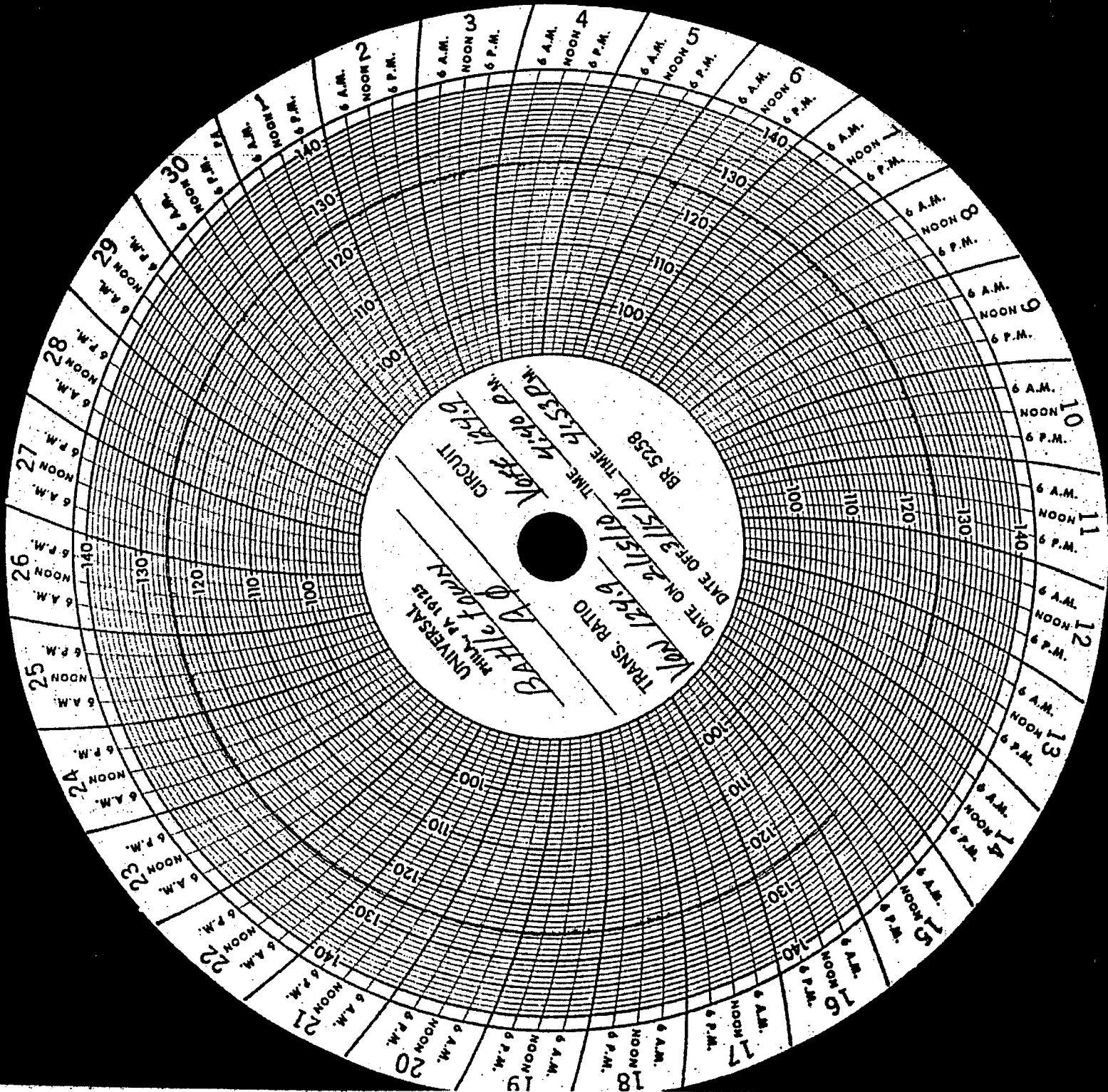
TRANS. RATIO  
 Vol 135.5  
 DATE ON 6/11/68  
 TIME 4:33 P.M.  
 CIRCUIT  
 Vol 135.0  
 DATE OFF 7/11/68  
 TIME 4:31 P.M.  
 BR 5258

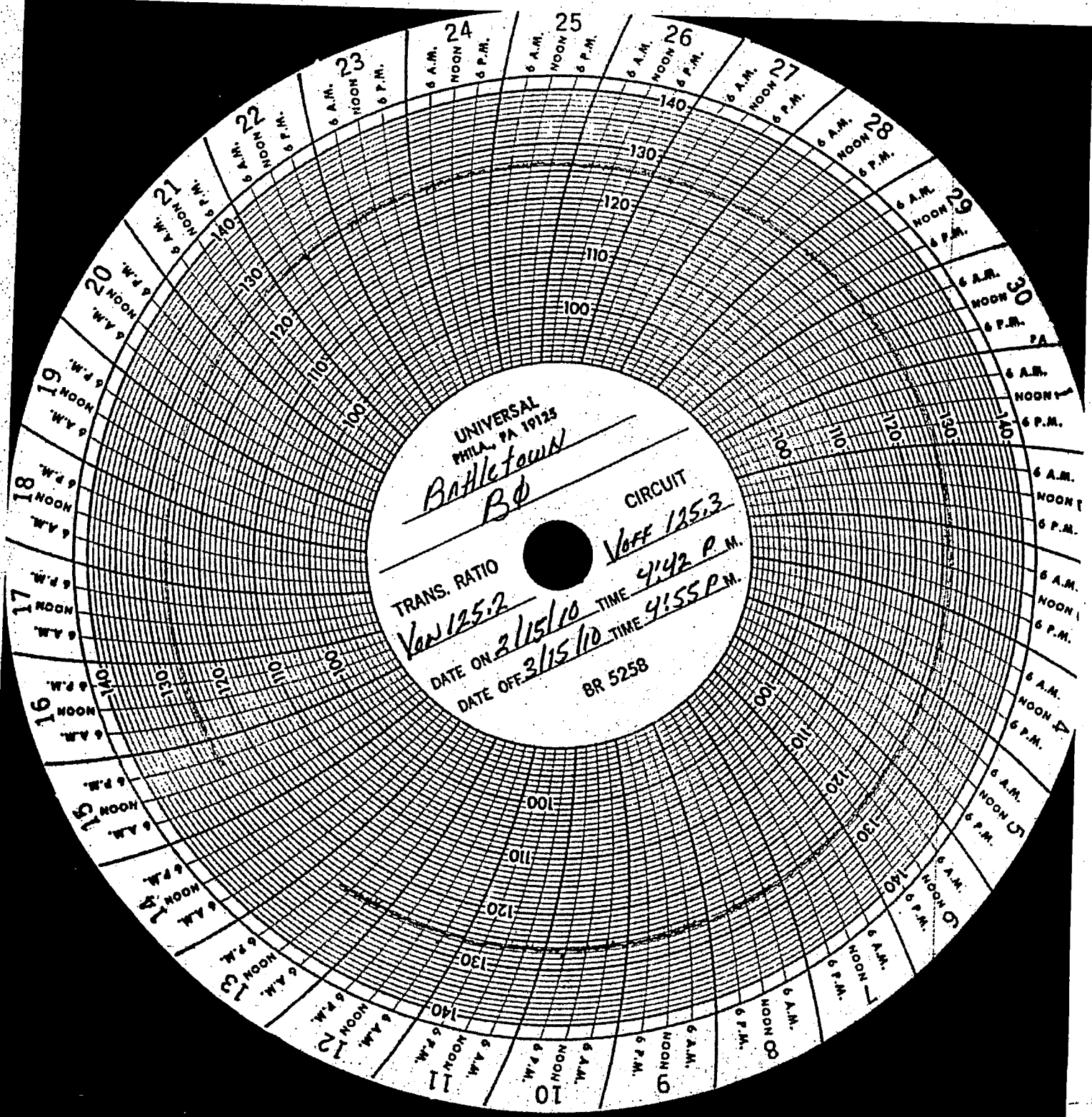
Original



UNIVERSAL  
MILA., PA 19125  
*Bohile Loren*  
TRANS. RATIO  
*Von 126.2*  
DATE ON *6/16/68*  
DATE OFF *7/14/68*  
CIRCUIT  
*Vose 125.7*  
BR 5258  
TIME *4:35 P.M.*  
TIME *4:32 P.M.*







UNIVERSAL  
PHILA. PA 19125

Battletown  
B0

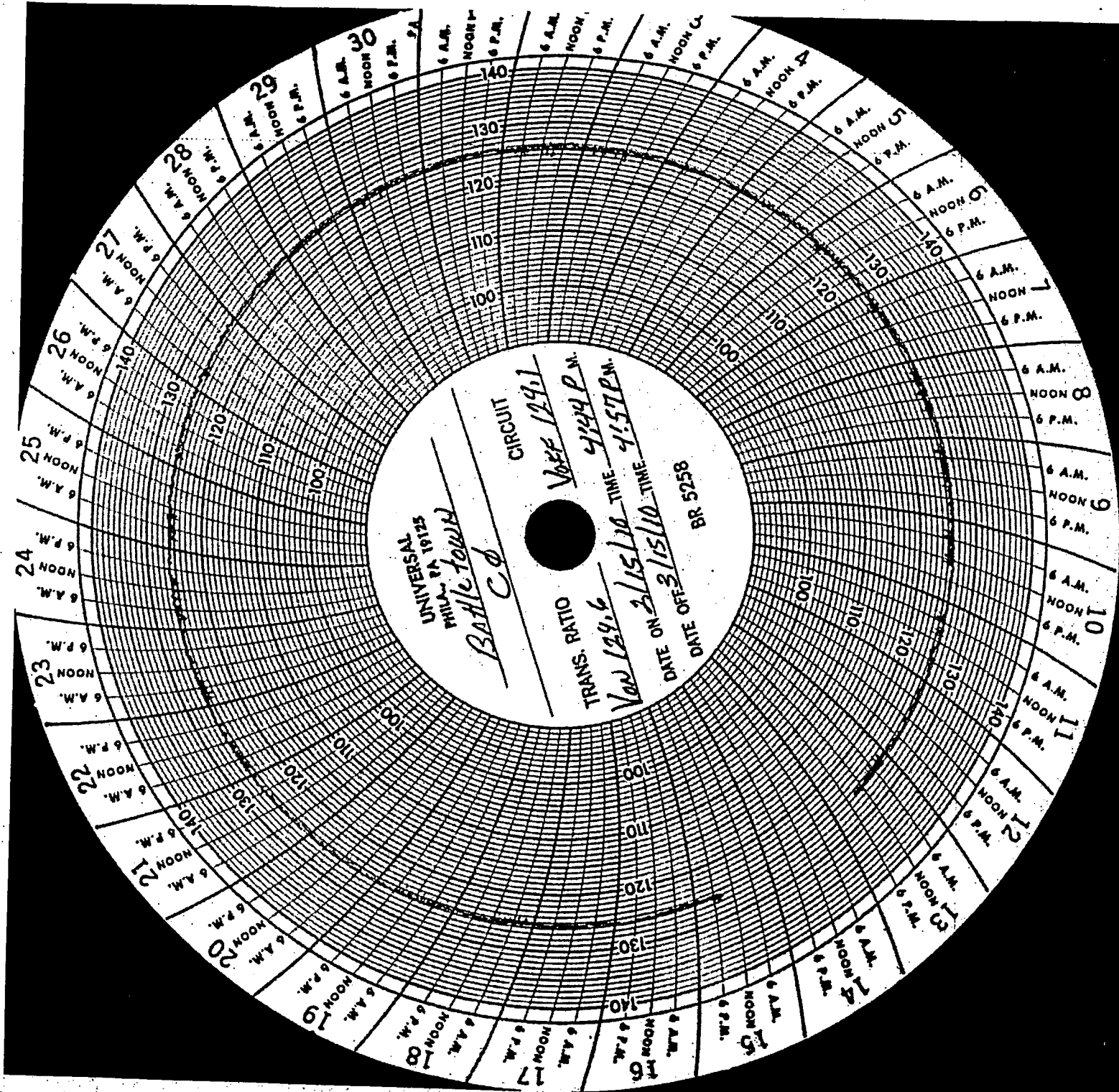
TRANS. RATIO  
Van 125.2

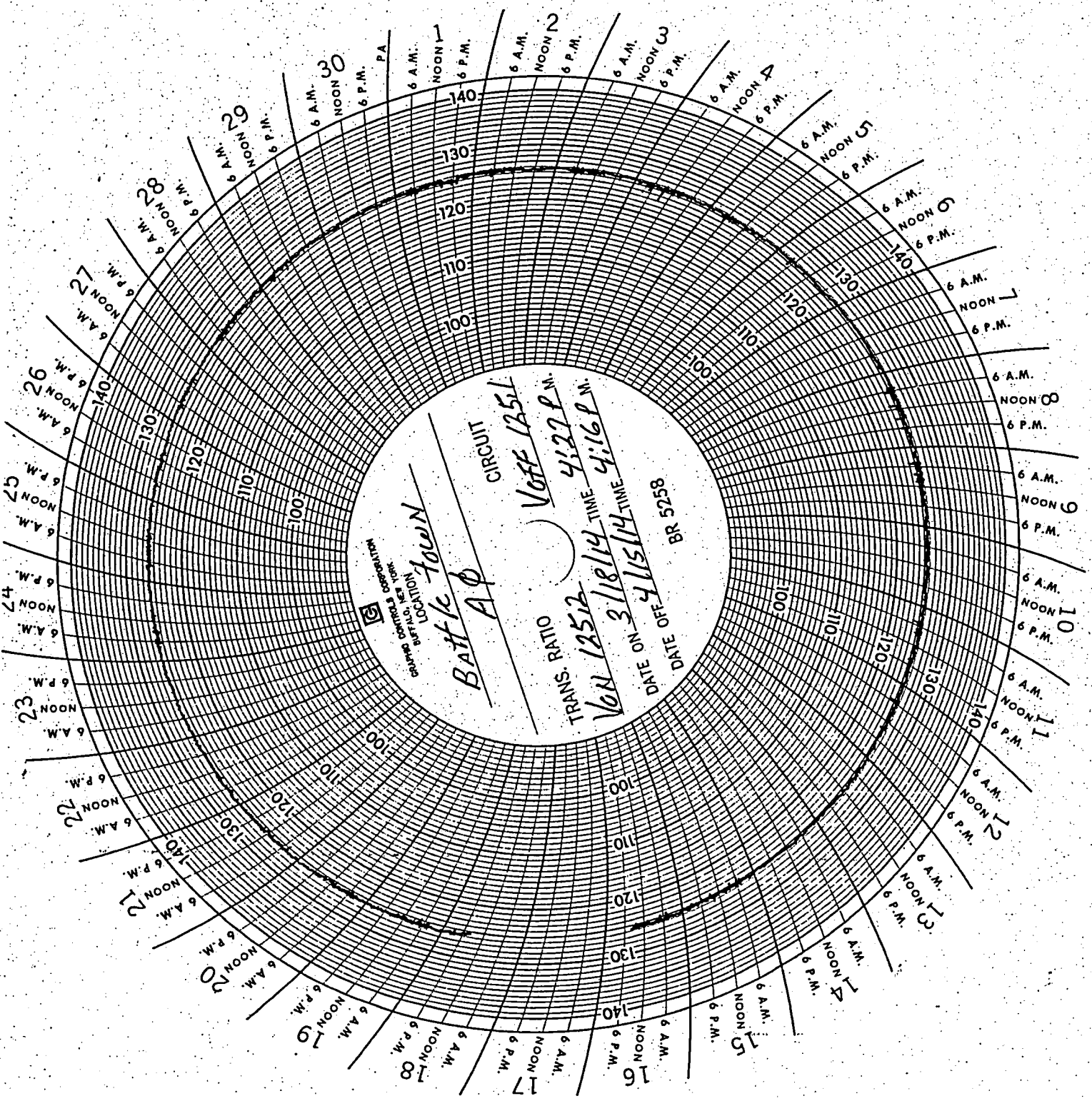
CIRCUIT  
Voff 125.3

DATE ON 2/15/10  
DATE OFF 3/15/10

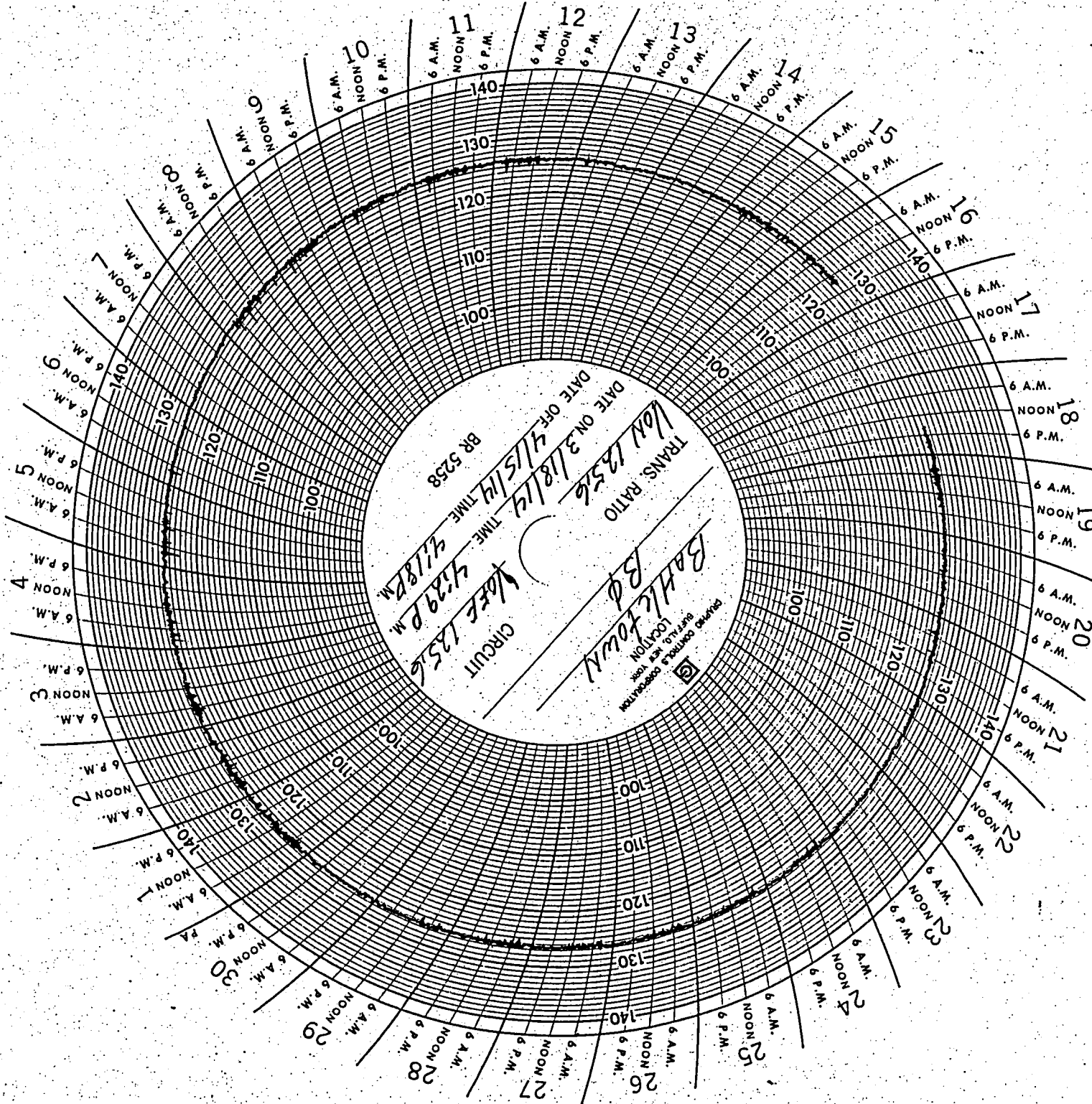
TIME 4:42 P.M.  
TIME 4:55 P.M.

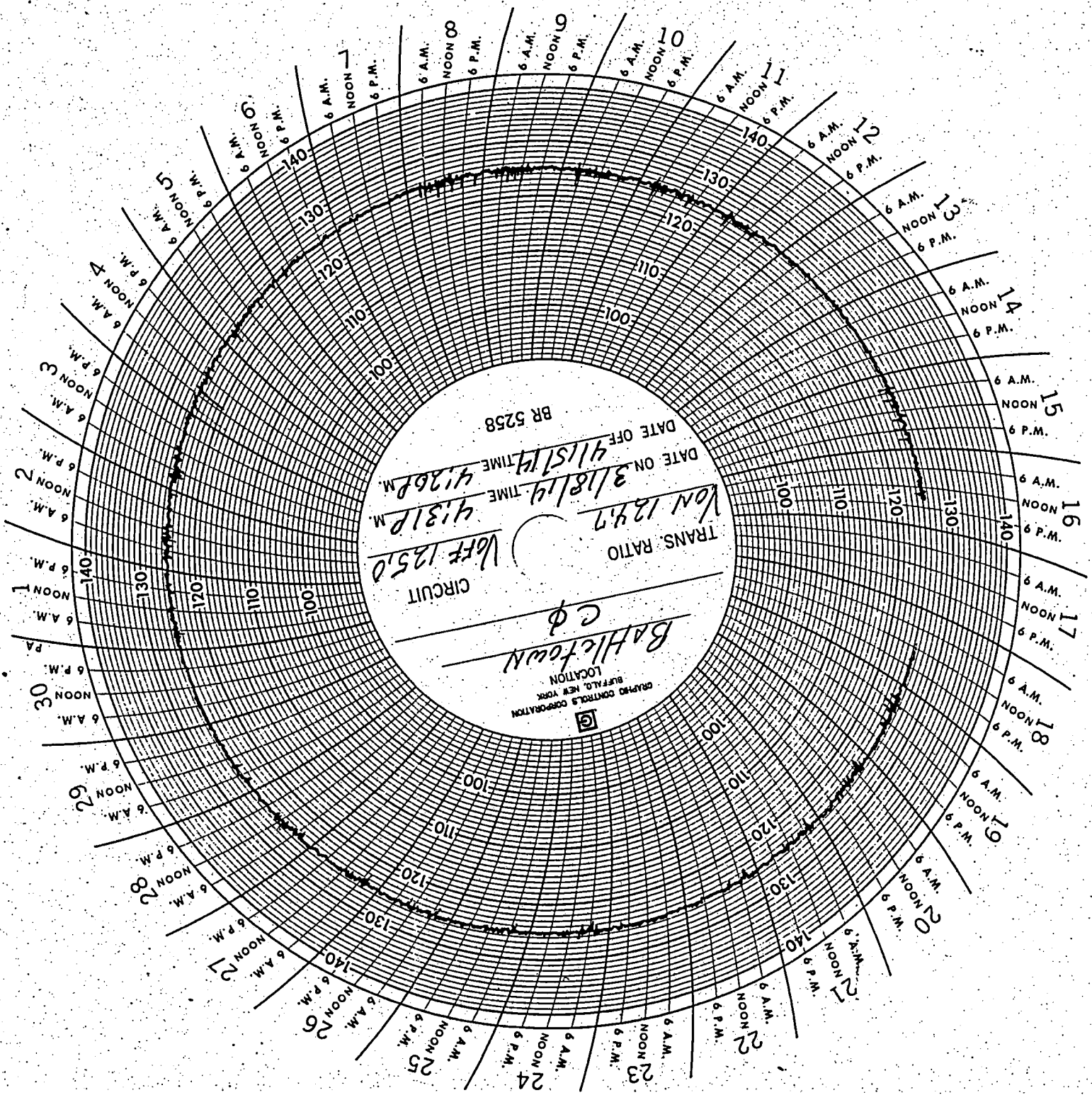
BR 5258











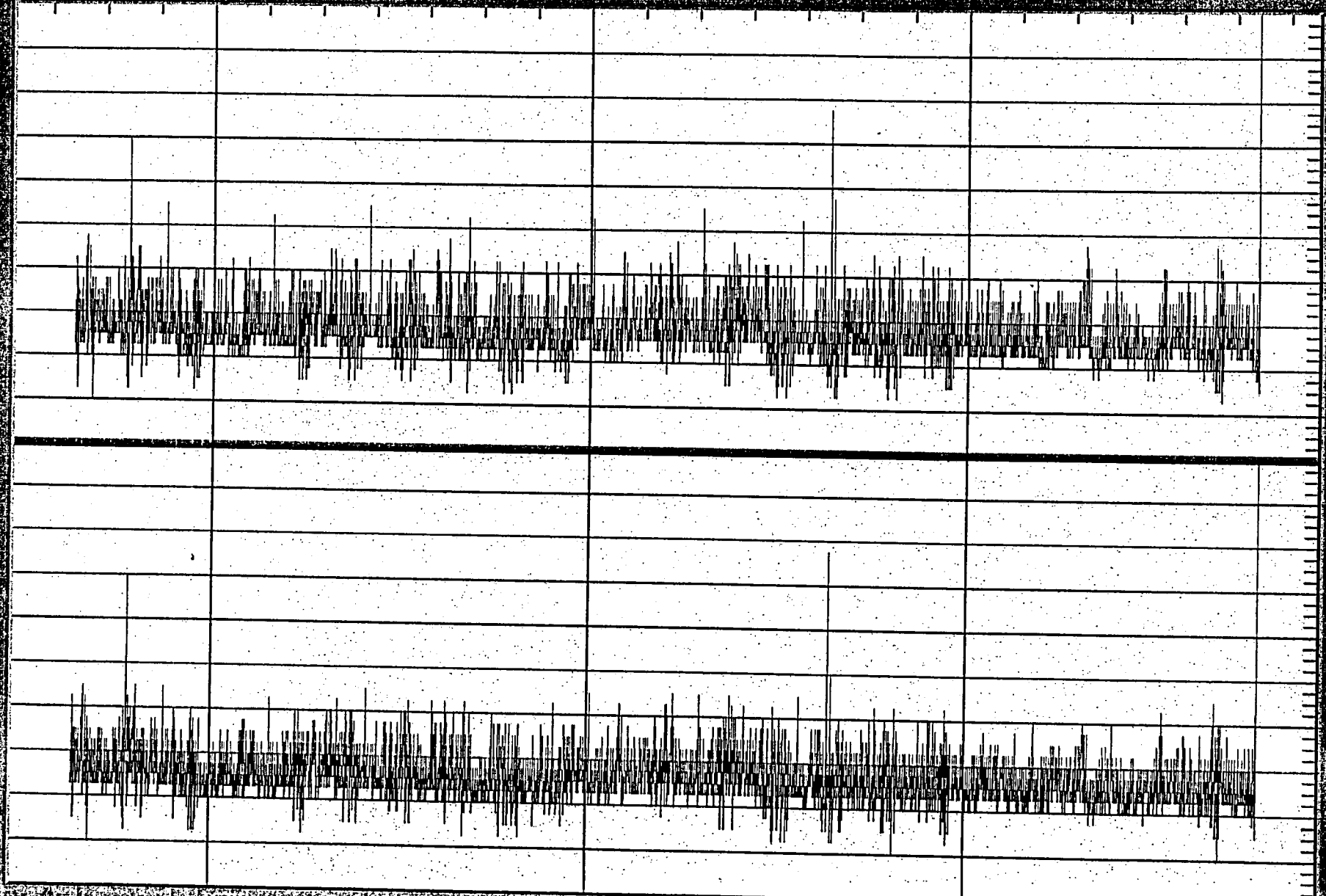
acct 47-91-16 Battletown, FDR 2, Pole 11024

RMS Voltage

Min

Ave

Max



G12 V

G11 V

Dec 2008

1 Mon

8 Mon

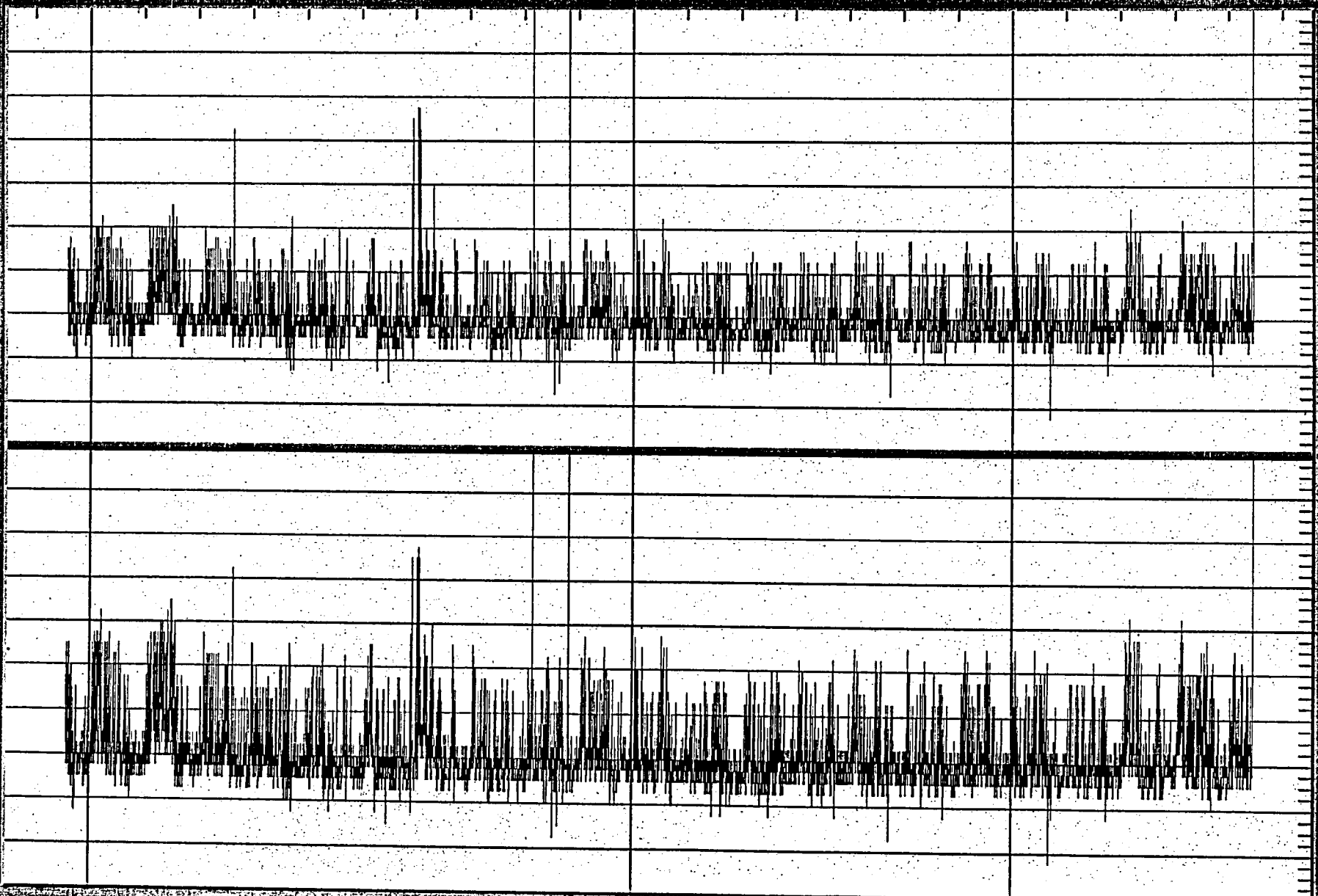
15 Mon

Page 10

acc T. 1164, FDR2, B&TELECOM

RINGS Voltage

Max Ave Mid



CH2 V  
CH1 V

0  
2  
4  
6  
8  
10  
12  
14  
16  
18  
20  
22  
24  
26  
28  
30  
30  
28  
26  
24  
22  
20  
18  
16  
14  
12  
10  
8  
6  
4  
2  
0

May 2011

15 Sun

22 Sun

1 Wed

Phase 11