

JOHN N. HUGHES
Attorney at Law
Professional Service Corporation
124 West Todd Street
Frankfort, Kentucky 40601

Telephone: (502) 227-7270

jnhughes@fewpb.net

Telefax (502) 875-7059

September 28, 2012

Jeff Derouen
Executive Director
Public Service Commission
211 Sower Blvd.
Frankfort, KY 40601

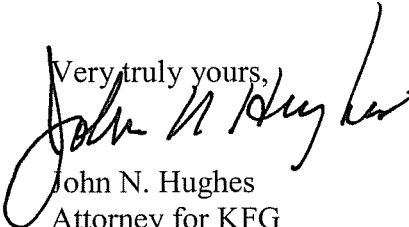
RECEIVED
SEP 28 2012
PUBLIC SERVICE
COMMISSION

Re: KY Frontier Gas
Case 2011-00443

Dear Mr. Derouen:

KY Frontier Gas, LLC provides the tear sheets and affidavits of publication of two additional customer notices published in the newspapers in the service area, which were recently received.

Please contact me if you have any questions about this matter.

Very truly yours,

John N. Hughes
Attorney for KFG

Attachments

The Licking Valley Courier
West Liberty, Ky.
Telephone (606) 743-3551

The Wolfe County News
Campton, Ky.
Telephone (606) 668-3595

The Elliott County News
Sandy Hook, Ky.
Telephone (606) 738-5574

THE COURIER PUBLISHING CO.

EARL W. KINNER, PUBLISHER AND MANAGER
WEST LIBERTY, KY.

Affidavit

I, Earl Kinner, Editor of The Licking Valley Courier, newspaper published in West Liberty, Kentucky, and having the largest general circulation of any newspaper in Morgan County, Kentucky, do hereby certify that from my own knowledge and a check of the files of this newspaper that the advertisement of

Ky. Frontier Gas, LLC / Gas Rate Adjustment

was inserted in The Licking Valley Courier

on Sept. 6, 13, 20, 2012.

Earl W. Kinner

Subscribed and sworn to before me, a Notary Public, by Earl Kinner this 21st day of
September, 2012.

Gregory Neil Kinner
Notary Public

November 12, 2012

My Commission Expires

Breathitt Advocate

Invoice

PO Box 1015
Jackson, KY 41339

Date	Invoice #
8/30/2012	2030

Bill To
Kentucky Frontier Gas LLC Attn: Betty Royse Po Box 408 Prestonsburg, KY 41653

Affidavit of Service Rendered
State of Kentucky County of Breathitt The undersigned having been duly sworn, deposes that the following billed ads were printed in the Breathitt Advocate at the date shown in the item section of this invoice on the page number listed on this invoice. <i>Bobby Thorpe</i> - Bobby Thorpe Subscribed and sworn before me this <u>4</u> day of <u>Sept</u> 20 <u>12</u> . <i>Bobby</i> - Notary Public My commission expires <u>4/26/2014</u>

P.O. Number	Terms	Rep	Ship	Via	F.O.B	Project

Quantity	Item Code	Description	Price Each	Amount
3	Legal Ad 2012	Legal Notice 8/16, 8/23, 8/31	300.00	900.00

			Total	\$900.00
--	--	--	--------------	----------

**KENTUCKY FRONTIER GAS, LLC
NOTICE TO CUSTOMERS
GAS RATE ADJUSTMENT
NON-RECURRING FEE CHANGES
TARIFF CHANGES**

Pursuant to the regulations of the Public Service Commission (Commission), Kentucky Frontier Gas, LLC proposes that it intends to adopt an increase in its natural gas rates. The rates are proposed to become effective September 15, 2012, or when approved by the Commission. The rates proposed will consolidate the existing rates of Auxier Rural Gas Company (Rural Gas Company), Belfry Gas Company, Cow Creek Gas Company, Cow Creek/Sigma, Dema Gas Company, East Kentucky Utilities, Peoples Gas, and Mike Little Gas Company into Kentucky Frontier Gas. Farm tap charges and tariffs will also be consolidated into one tariff of Kentucky Frontier Gas, LLC. The affected farm tap companies are: Abert, Haysville, KLC Enterprises. Quality Gas and Interstate Gas. Farm tap rates are not being adjusted in this case. One rate schedule and tariff will apply to all customers, who will become customers of Kentucky Frontier Gas, LLC. The average monthly customer bill will change depending on the current company rate being charged. The average change in the monthly bill and the percentage change in the monthly bill are listed in the rate schedule below. Changes to current non-recurring charges are also being proposed for disconnection and farm tap customers. These changes are listed in the schedule below. A Pipeline Replacement Program (PRP) recovery fee and mechanism and an Automated Meter Reading Recovery (AMR) surcharge are proposed. A new monthly customer charge is proposed. A new Large Commercial rate and customer charge is proposed. Changes in existing tariffs to consolidate and make uniform all service regulations are also being proposed. These tariff changes can be reviewed in the application at the addresses listed below.

Further information may be obtained from the Commission or Kentucky Frontier Gas, LLC. The rates contained in this notice are the rates proposed by Kentucky Frontier Gas, LLC. However, the Public Service Commission may order rates to be charged that differ from these proposed rates. Such action may result in rates for consumers other than the rates in this notice. Such action by the Commission may result in the rates being higher or lower than those proposed by Kentucky Frontier Gas, LLC.

Any corporation, association, body politic or person may by timely motion, within 30 days of this Notice, request intervention in this case. Intervention beyond the 30 day period may be granted for good cause shown. The Motion must be submitted to the Public Service Commission, 211 Sewell Blvd., Box 615, Frankfort, KY 40602 and should state the grounds for the request including the interest and status of the party. Interventions may obtain copies of the Application and any testimony filed by contacting Kentucky Frontier Gas, LLC at the address below. A copy of the Application is available for public review at the office of Kentucky Frontier Gas, LLC and at the Public Service Commission, 211 Sewell Blvd., Frankfort, KY 40601. (502) 564-3940.

Larry Rich
Kentucky Frontier Gas, LLC
P.O. Box 308
Prentissburg, KY 40377
Phone:
(606) 886-2431

CURRENT RATES: minimum bill

Auxier Road	\$6.36 1 st mcf
Belfry Gas	\$4.27 1 st mcf
Blaine	\$14.18 1 st mcf
BTU Gas	\$3.90 1 st mcf
Cow Creek/Sigma	\$6.25 1 st mcf
Cow Creek	\$3.18 1 st mcf
Dema Gas	\$7.47 1 st mcf
East KY Utilities	\$10.00 1 st mcf
Mike Little Gas	\$5.50 1 st mcf
People's Gas	\$4.40 1 st mcf

Proposed Rate: \$10.00 Customer Charge, plus \$4.18 per mcf per month

PROPOSED RATES/Average monthly bill comparison/%change

Company	Now \$/Yr	Now \$/Mo	+\$/mo
	Prop \$/Yr	Prop \$/Mo	% increase
	\$10.00	Mo Chrg	
	\$4.18 per MCF	\$5.25 gas cost mcf	
Auxier	\$634.42	\$52.87	\$4.28
	\$685.80	\$57.15	8.1%
Belfry	\$496.80	\$41.40	\$15.75
	\$685.80	\$57.15	38.0%
Blaine	\$675.00	\$56.25	\$0.90
	\$685.80	\$57.15	1.6%
BTU	\$504.36	\$42.03	\$15.12
	\$685.80	\$57.15	36.0%
Cow Creek/Sigma	\$608.40	\$50.70	\$6.45
	\$685.80	\$57.15	12.7%
Cow Creek	\$505.62	\$42.14	\$15.02
	\$685.80	\$57.15	35.6%
Dema	\$705.30	\$58.78	\$(1.63)
	\$685.80	\$57.15	-2.8%
East KY utilities	\$687.48	\$57.29	\$(0.14)
	\$685.80	\$57.15	-0.2%

*Subscribe to the Advocate
Call 693-0175*

10th Haddix & Big Branch Reunion
Saturday, September 1st, 2012 12:00 P.M. Kiwanis Shelter @ the Kiwanis Park. Directions: Follow the road on the river side between Shellmart and Noble's Auto Mart or the old road beside the KFC. For more information call: 666-7836 Welcome!!!!

Mike Little	\$496.80	\$19.07	\$0.00
	\$495.80	\$17.15	16.5%
Peoples	\$705.30	\$11.73	\$15.42
	\$685.80	\$7.15	37.0%
Large Commercial	\$3.18 per mcf		Flow Rate Classification

Proposed Customer Charge	\$10.00 per month per residential customer. New charge
	\$4.50 per customer Large Commercial. New charge
Proposed Pipeline Replacement Fee	\$1.50 per month per customer. New charge
Proposed AMR surcharge	\$1.00 per month per customer. New charge

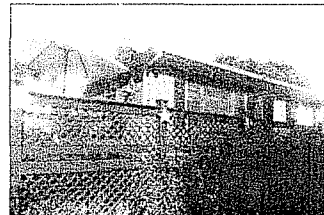
Non-Recurring Fees - Current Rates

Auxier	Reconnection charge \$100.00, transfer of service charge \$20.00, service charge late payment \$25.00, returned check fee \$15.00, Meter trailer connection fee \$75.00
Belfry	Reconnection charge \$50.00, reconnection fee to establishment of service \$35.00, transfer of service charge \$25.00, trip charge - late payment \$15.00, late payment charge 10%, returned check fee \$25.00, transfer charge \$20.00, Connection charge \$35.00, meter relocation fee \$35.00
BTU	Reconnection charge \$25.00, transfer of service charge \$20.00, service charge - late payment \$25.00, returned check fee \$20.00, tap fee actual cost
Cow Creek	Reconnection charge \$65.00, transfer of service charge \$20.00, service charge - late payment 15%, returned check fee \$10.00, Connection charge \$25.00, temporary service charge \$65.00
Dema	Reconnection charge \$50.00, reconnection fee to establishment of service \$25.00, transfer of service charge \$25.00, service charge - late payment \$15.00, returned check fee \$20.00, Meter trailer connection fee \$75.00
East KY Utilities	Reconnection charge \$50.00, reconnection fee to establishment of service \$35.00, transfer of service charge \$25.00, trip charge - late payment \$25.00, late payment charge 10%, returned check fee \$20.00, transfer charge \$25.00, Connection charge \$75.00
Mike Little	Reconnection charge \$50.00, late payment charge 10%, returned check fee \$12.50, trip charge \$35.00, Connection charge \$65.00
Peoples Gas	Late Payment fee 10%, Revenue Fee \$35.00, Connect fee \$45.00, Service fee \$15.00
Abert, Haysville, KLC Enterprises, Interstate Gas, Quality Gas	New service tap \$150.00, Reconnection charge \$50.00, reconnection charge - late payment \$10.00, late payment charge 10%, returned check fee \$25.00, trip charge \$15.00

PROPOSED CONSOLIDATED NON-RECURRING FEES - ALL CUSTOMERS

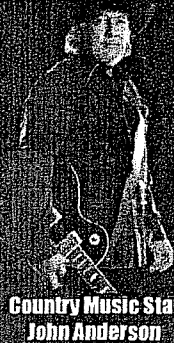
Turn on fee	\$100.00 to initiate service at a location for seasonal/temporary turn on
Reconnection Fee	\$100.00 to restore service within 12 months of disconnection/termination for non-payment
Relocate meter	\$35.00 hr plus costs - move meter at customer request
Transfer Service Fee	\$30.00 to change tenants (change to new customer)
Returned Check Charge	\$30.00 for a check returned for insufficient funds, plus any fees assessed by the bank
Late Payment Charge	12% of the current monthly charges
Service (trip) Charge	\$100.00 for any special trip made to collect delinquent bills/terminate service
Farm Tap Fee	\$200 to initiate a farm tap off a high-pressure pipeline
Special meter reading charge	\$100.00 for reread
Meter test fee	\$35.00/hr plus costs
Deposit	212lbs annual average residential bill

House For Sale



For sale by owner
3Br, 1 Bathroom,
garage, storage
sheds, Deck with
sun setter. All
fenced in. Must
see! Call for appt
568-1211 (House
in Jackson)

**Free In Concert at the
2012 Breathitt Heritage Fair**



Country Music Star
John Anderson

**Country
Music Star
John
Anderson
Sat. Oct. 6th
at 8PM
Douthitt
Park**

**KENTUCKY FRONTIER GAS, LLC
NOTICE TO CUSTOMERS
GAS RATE ADJUSTMENT
NON-RECURRING FEE CHANGES
TARIFF CHANGES**

Pursuant to the regulations of the Public Service Commission (Commission), Kentucky Frontier Gas, LLC proposes that it intends to adopt an increase in its natural gas rates. The rates are proposed to become effective September 15, 2012, or when approved by the Commission. The rates proposed will consolidate the existing rates of Auxier Road Gas Company, Belfry Gas Company, Cow Creek Gas Company, Cow Creek/Sigma, Derna Gas Company, East Kentucky Utilities, People's Gas, City of Blaine and Mike Little Gas Company into Kentucky Frontier Gas, LLC. The affected farm tap companies are: Alart, Harpsville, KLC Enterprises, Quality Gas and Inherstate Gas. Farm tap rates are not being adjusted in this case. The rate schedule and tariff will apply to all customers, who will become customers of Kentucky Frontier Gas, LLC. The average monthly customer bill will change depending on the current rate and any rate being changed. The average change in the monthly bill and the percentage change in the monthly bill are listed in the rate schedule below. Changes to current fees (non-recurring charges) are also being proposed for distribution and farm tap customers. These changes are listed in the schedule below. A Pipeline Replacement Program (PRP) recovery fee and mechanism and an Automated Meter Reading Recovery (AMR) surcharge are proposed. A new monthly customer charge is proposed. A new Large Commercial rate and customer charge is proposed. Changes in existing tariffs to consolidate and make uniform all service regulations are also being proposed. These tariff changes can be reviewed in the application at the addresses listed below.

Further information may be obtained from the Commission or Kentucky Frontier Gas, LLC. The rates contained in this notice are the rates proposed by Kentucky Frontier Gas, LLC. However, the Public Service Commission may order rates to be charged that differ from these proposed rates. Such action may result in rates for consumers other than the rates in this notice. Such action by the Commission may result in rates being higher or lower than those proposed by Kentucky Frontier Gas, LLC.

Any corporation, association, levy, public or person may file a motion within 30 days of this notice to request intervention in this case. Intervention beyond the 30 day period may be granted for good cause shown. The Motion must be submitted to the Public Service Commission 211 Second Street, Box 615, Frankfort, KY 40602 and should state the grounds for the request including the interest and status of the party. Intervenor may obtain copies of the Application and any testimony filed by contacting Kentucky Frontier Gas, LLC at the addresses below. A copy of the Application is available for public review at the office of Kentucky Frontier Gas, LLC and at the Public Service Commission 211 Second Street, Frankfort, KY 40601 (502) 564-3940.

Larry Holt,
Kentucky Frontier Gas, LLC
P. O. Box 408
Frankfort, KY 40601
Phone:
(502) 806-2431

CURRENT RATES: minimum bill

Auxier Road	\$6.36 1 st mcf
Belfry Gas	\$4.27 1 st mcf
Blaine	\$14.18 1 st mcf
BTU Gas	\$3.90 1 st mcf
Cow Creek/Sigma	\$6.25 1 st mcf
Cow Creek	\$3.18 1 st mcf
Derna Gas	\$7.47 1 st mcf
East KY Utilities	\$10.00 1 st mcf
Mike Little Gas	\$5.50 1 st mcf
People's Gas	\$4.40 1 st mcf

Proposed Rate: \$10.00 Customer Charge, plus \$4.18 per mcf per month

PROPOSED RATES/Average monthly bill comparison/%change

Company	Now \$/Yr	Now \$/Mo	+\$/mo.
	Prop \$/Yr	Prop \$/Mo	% increase
	\$10.00	Mo Chrg	
	\$4.18 per MCF	\$5.25 gas cost mcf	
Auxier	\$634.42	\$52.87	\$4.28
	\$685.80	\$57.15	8.1%
Belfry	\$496.80	\$41.40	\$15.75
	\$685.80	\$57.15	38.0%
Blaine	\$675.00	\$56.25	\$0.90
	\$685.80	\$57.15	1.6%
BTU	\$504.36	\$42.03	\$15.12
	\$685.80	\$57.15	36.0%
Cow Creek/Sigma	\$608.40	\$50.70	\$6.45
	\$685.80	\$57.15	12.7%
Cow Creek	\$505.62	\$42.14	\$15.02
	\$685.80	\$57.15	35.6%
Derna	\$705.30	\$58.78	\$(1.63)
	\$685.80	\$57.15	-2.8%
East KY utilities	\$687.48	\$57.29	\$(0.14)
	\$685.80	\$57.15	-0.2%

**Subscribe to the Advocate
Call 693-0175**

10th Haddix & Big Branch Reunion
Saturday, September 1st, 2012 12.00 P.M. Kiwanis Shelter @ the Kiwanis Park. Directions: Follow the road on the river side between Shellmart and Noble's Auto Mart or the old road beside the KFC. For more information call 666-7836 Welcome!!!!

Mike Little	\$5.99 1 st	\$4.00 1 st	\$1.99
	\$685.80	\$57.15	16.5%
People's	\$4.40 1 st	\$4.17 1 st	\$15.42
	\$685.80	\$57.15	37.6%
Large Commercial	\$3.35 per mcf		New Tariff Classification

Process to establish charge	\$3.00 per month per residential customer	New charge
	\$5.00 per customer Large Commercial	New charge
Processed Pipeline Reconnection fee	\$1.50 per month per customer	New charge
Processed AMR surcharge	\$1.00 per month per customer	New charge

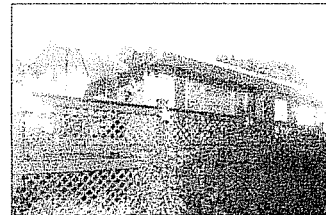
Non-Recurring Fees - Current Rates

Auxier	Reconnection charge \$100.00 transfer of service charge \$20.00 service charge late payment \$25.00 returned check fee \$15.00 Mobile trailer connection fee \$75.00
Belfry	Reconnection charge \$50.00 reconnection fee to establishment of service \$35.00 transfer of service charge \$25.00 trip charge - late payment \$35.00 late payment charge 10% returned check fee \$25.00 transfer charge \$20.00 Connection charge \$35.00 meter relocation fee \$45.00
Blaine	Reconnection charge \$25.00 transfer of service charge \$20.00 service charge - late payment \$25.00 returned check fee \$20.00 tap fee actual cost
Cow Creek	Reconnection charge \$75.00 transfer of service charge \$20.00 service charge late payment 15% returned check fee \$10.00 Collection charge \$25.00 temporary service charge \$65.00
Derna	Reconnection charge \$50.00 reconnection fee to establishment of service \$25.00 transfer of service charge \$25.00 service charge - late payment \$15.00 returned check fee \$20.00 Mobile trailer connection fee \$75.00
East KY Utilities	Reconnection charge \$50.00 reconnection fee to establishment of service \$35.00 transfer of service charge \$25.00 trip charge - late payment \$25.00 late payment charge 10% returned check fee \$20.00 transfer charge \$25.00 Connection charge \$75.00
Mike Little	Reconnection charge \$40.00 late payment charge 10% returned check fee \$12.50 trip charge \$15.00 Connection charge \$65.00
People's Gas	Late Payment fee 10% Reconnection fee \$15.00 Connection fee \$45.00 Service fee \$15.00
Alart Harpsville KLC Enterprises, Inherstate Gas, Quality Gas	New service tap \$150.00 Reconnection charge \$50.00 reconnection charge - late payment \$40.00 late payment charge 10% returned check fee \$25.00 trip charge \$15.00

PROPOSED CONSOLIDATED NON-RECURRING FEES - ALL CUSTOMERS

Turn on fee	\$100.00 to initiate service at a location for seasonal/temporary turn on
Reconnection Fee	\$100.00 to restore service within 12 months of disconnection/termination for non-payment
Mobile trailer	\$25.00 in plus costs - meter at customer request
Transfer Service Fee	\$30.00 to change tenants (change to new customer)
Returned Check Charge	\$30.00 for a check returned for insufficient funds plus any fees assessed by the bank
Late Payment Charge	12% of the current monthly charges
Service (trip) Charge	\$100.00 for any special trip made to collect delinquent bills/restore service
Farm Tap Fee	\$200 to initiate a farm tap off a high pressure pipeline
Special meter reading charge	\$100.00 for record
Meter test fee	\$35.00 in plus costs
Deposit	212ths annual average residential bill

House For Sale



For sale by owner
3Br, 1 Bathroom,
garage, storage
sheds, Deck with
sun setter. All
fenced in. Must
see! Call for appt.
568-1211 (House
in Jackson)

2012 Farm, Home & Family Night

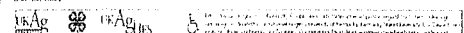


The Breathitt County Extension Office will host a special event for you and your family to celebrate the 2012 FARM, HOME & FAMILY NIGHT on Thursday, August 23rd, 2012 beginning at 5:00 pm at the Breathitt High School. There will be various educational exhibits for the entire family to enjoy and a special raffle will be held. We will have a special FREE raffle drawing at 7:30 pm. It's everything FREE! We hope you will bring a friend or family member to enjoy the evening.

August 23, 2012
Breathitt High School
5:00 PM - 7:30 PM

- Fall Vegetable Gardening
- Beekeeping
- Plate It Up (Nutrition)
- 4-H Fun
- Breathitt County History
- Kids Activities
- And many exhibits

Sponsored by:
Breathitt County Cooperative Extension
1155 Main Street, P.O. Box 612
Frankfort, KY 40601
606.696.5823



**KENTUCKY FRONTIER GAS, LLC
NOTICE TO CUSTOMERS
GAS RATE ADJUSTMENT
NON-RECURRING FEE CHANGES
TARIFF CHANGES**

Pursuant to the regulations of the Public Service Commission (Commission), Kentucky Frontier Gas, LLC proposes that it intends to adopt an increase in its natural gas rates. The rates are proposed to become effective September 15, 2012, or when approved by the Commission. The rates proposed will consolidate the existing rates of Auxier Road Gas Company, BTU Gas Company, Dolly Gas Company, Cow Creek Gas Company, Cow Creek/Sigma, Dema Gas Company, East Kentucky Utilities, Peoples Gas, City of Blaine and Mike Little Gas Company into Kentucky Frontier Gas, LLC. The rates of farm tap companies are: Alart, Haysouth, KLC, Peoples Gas and Interstate Gas. Farm tap rates are not being adjusted in this case. One rate schedule and tariff will apply to all customers, who will become customers of Kentucky Frontier Gas, LLC. The average monthly customer bill will change depending on the current company rate being charged. The average change in the monthly bill and the percentage change in the monthly bill are listed in the rate schedule below. Changes to current fees (non-recurring charges) are also being proposed for destination and farm tap customers. These changes are listed in the schedule below. A Pipeline Replacement Program (PRP) recovery fee and non-hazardous and an Automatic Meter Reading Recovery (AMR) surcharge are proposed. A new monthly customer charge is proposed. A new Large Commercial rate and customer charges is proposed. Changes in existing tariffs to consolidate and make uniform all service regulations are also being proposed. These tariff changes can be reviewed in the application of the addresses listed below.

Further information may be obtained from the Commission or Kentucky Frontier Gas, LLC. The rates contained in this notice are the rates proposed by Kentucky Frontier Gas, LLC. However, the Public Service Commission may order rates to be charged that differ from those proposed rates. Such action by the Commission may result in the rates being higher or lower than those proposed by Kentucky Frontier Gas, LLC.

Any corporation, association, body politic or person may by timely motion, within 30 days of the filing, request intervention in this case. Intervention beyond the 30-day period may be granted for good cause shown. The Motion must be submitted to the Public Service Commission, 211 Sewer Blvd., Box 615, Frankfort, KY 40602 and should state the grounds for the request, including the interest and status of the party. Intervenor may obtain copies of the Application and any testimony filed by Kentucky Frontier Gas, LLC at its address below. A copy of the Application is available for public review at the office of Kentucky Frontier Gas, LLC and at the Public Service Commission, 211 Sewer Blvd., Frankfort, KY 40601. (502) 564-3940.

Larry Rich
Kentucky Frontier Gas, LLC
P. O. Box 488
Protestantburg, KY 41653
Phone
(606) 886-2431

CURRENT RATES, minimum bill

Auxier Road	\$6.36 1 st mcf
Belfry Gas	\$4.27 1 st mcf
Blaine	\$14.181 st mcf
BTU Gas	\$3.90 1 st mcf
Cow Creek/Sigma	\$6.25 1 st mcf
Cow Creek	\$3.18 1 st mcf
Dema Gas	\$7.47 1 st mcf
East KY Utilities	\$10.001 st mcf
Mike Little Gas	\$5.50 1 st mcf
Peoples Gas	\$4.40 1 st mcf

Proposed Rate: \$10.00 Customer Charge, plus \$4.18 per mcf per month

PROPOSED RATES/Average monthly bill comparison/% change

Company	Now \$/Yr			Now \$/Mo			+\$/mo		
	Prop \$/Yr	Prop \$/Mo	% increase	Prop \$/Mo	Mo Chrg	% increase	Prop \$/Mo	% increase	
	\$10.00								
	\$4.18 per MCF	\$5.25 gas cost							
Auxier	\$634.42	\$52.87	\$4.28	\$685.80	\$57.15	8.1%			
Belfry	\$496.80	\$41.40	\$15.75	\$685.80	\$57.15	38.0%			
Blaine	\$675.00	\$56.25	\$0.90	\$685.80	\$57.15	1.6%			
BTU	\$504.36	\$42.03	\$15.12	\$685.80	\$57.15	36.0%			
Cow Creek/Sigma	\$608.40	\$50.70	\$6.45	\$685.80	\$57.15	12.7%			
Cow Creek	\$505.62	\$42.14	\$15.02	\$685.80	\$57.15	35.6%			
Dema	\$705.30	\$58.78	\$(1.63)	\$685.80	\$57.15	-2.8%			
East KY utilities	\$687.48	\$57.29	\$(0.14)	\$685.80	\$57.15	-0.2%			



**BYSL
Fall Soccer
Registration**

**Saturday, August 18
McDonald's of Jackson
10 a.m. - 12 p.m.**

**Teams for ages 4 to 18
Registration Fee: \$40
Practices: Tuesdays and Thursdays
Must have birth certificate to register new players
For info call Missy at 295-7218 or Scott at 666-8443
*** Players must have turned 4 by August 1, 2012 in order to play this season! *****

Mike Little	\$599.00	\$49.07	\$9.08
	\$685.80	\$57.15	16.5%
Peoples	\$500.00	\$41.63	\$14.42
	\$685.80	\$57.15	37.0%

Large Commercial \$3.00 per mcf New rate classification

Processed Customer Charge \$10.00 per month per residential customer New charge \$5.00 per customer Large Commercial New charge

Processed Pipeline Replacement fee \$1.00 per month per customer New charge Processed AMR surcharge \$1.00 per month per customer New charge

Non-Recurring Fees, Current Rates

Auxier Reconnection charge \$100.00 transfer of service charge \$20.00 service change late payment \$25.00 returned check fee \$15.00 Mobile meter connection fee \$75.00

Belfry Reconnection charge \$50.00 reconnection fee re-establishment of service \$35.00 transfer of service charge \$25.00 late charge late payment \$15.00 late payment charge 10% returned check fee \$25.00 transfer charge \$20.00 connection charge \$35.00 meter relocation fee \$35.00

Blaine Reconnection charge \$25.00 transfer of service charge \$20.00 service change late payment \$25.00 returned check fee \$20.00 tap fee actual cost

Cow Creek Reconnection charge \$65.00 transfer of service charge \$20.00 service change late payment 15% returned check fee \$10.00 collection charge \$25.00 temporary service charge \$65.00

Dema Reconnection charge \$50.00 reconnection fee re-establishment of service \$25.00 transfer of service charge \$25.00 service change late payment \$15.00 returned check fee \$20.00 Mobile meter connection fee \$75.00

East KY Utilities Reconnection charge \$50.00 reconnection fee re-establishment of service \$35.00 transfer of service charge \$25.00 tap charge late payment \$15.00 late payment charge 10% returned check fee \$25.00 transfer charge \$25.00 connection charge \$35.00

Mike Little Reconnection charge \$50.00 late payment charge 10% returned check fee \$12.50 tap charge \$35.00 connection charge \$65.00

Peoples Gas Late Payment fee 10% Deceased Fee \$45.00 Camp Fee \$45.00 Service Fee \$45.00

Alart, Haysouth, KLC, Enterprises, Interstate Gas, Quality Gas New service tap \$150.00 Reconnection charge \$50.00 reconnection charge late payment \$10.00 late payment charge 10% returned check fee \$25.00 tap charge \$15.00

PROPOSED CONSOLIDATED NON-RECURRING FEES - ALL CUSTOMERS

Turn on Fee \$100.00 to initiate service at a location for seasonal/temporary turn on

Reconnection Fee \$100.00 to restore service within 12 months of disconnection/termination for non-payment

Relocate meter \$35.00/hr plus costs - move meter at customer request

Transfer Service Fee \$30.00 to change tenants (change to new customer)

Returned Check Charge \$30.00 for a check returned for insufficient funds, plus any fees assessed by the bank

Late Payment Charge 12% of the current monthly charges

Service (trap) Charge \$100.00 for any special trap made to collect disjuncted, full-termable service

Farm Tap Fee \$200 to initiate a farm tap off a high-pressure pipeline

Special meter reading charge \$100.00 for read

Meter test fee \$35.00/hr plus costs

Deposit 2/12ths annual average residential bill

Tickets can also be purchased at Citizens Bank Of Jackson and Jiffy Mart of Jackson