

COMMONWEALTH OF KENTUCKY  
BEFORE THE PUBLIC SERVICE COMMISSION

In The Matter Of:

APPLICATION OF KENTUCKY POWER  
COMPANY FOR APPROVAL OF ITS  
2011 ENVIRONMENTAL COMPLIANCE  
PLAN, FOR APPROVAL OF ITS  
AMENDED ENVIRONMENTAL COST  
RECOVERY SURCHARGE TARIFF, AND  
FOR THE GRANTING OF A  
CERTIFICATE OF PUBLIC  
CONVENIENCE AND NECESSITY FOR  
THE CONSTRUCTION AND  
ACQUISITION OF RELATED  
FACILITIES

CASE NO. 2011-00401

RECEIVED

FEB 22 2012

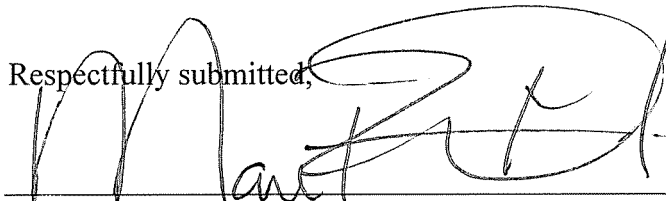
PUBLIC SERVICE  
COMMISSION

**Notice of Filing Of Supplemental Response**  
**To Identified Data Request**

Kentucky Power Company files the following four page document inadvertently omitted from its prior response to Sierra Club 1-1.

This the 22<sup>nd</sup> day of February, 2012.

Respectfully submitted,



Mark R. Overstreet  
R. Benjamin Crittenden  
STITES & HARBISON, PLLC  
421 West Main Street  
P.O. Box 634  
Frankfort, KY 40602-0634  
Telephone: (502) 223-3477  
COUNSEL FOR KENTUCKY POWER  
COMPANY

**CERTIFICATE OF SERVICE**

I hereby certify that a copy of the foregoing was served by hand delivery or overnight delivery upon the following parties of record, this the 22<sup>nd</sup> day of February, 2012.

Michael L. Kurtz  
Kurt J. Boehm  
Boehm, Kurtz & Lowry  
Suite 1510  
36 East Seventh Street  
Cincinnati, OH 45202

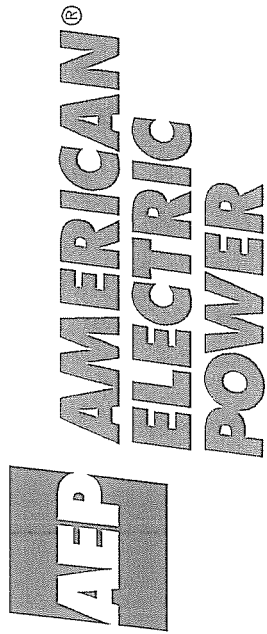
Joe F. Childers  
Joe F. Childers & Associates  
300 The Lexington Building  
201 West Short Street  
Lexington, KY 40507

Jennifer Black Hans  
Dennis G. Howard II  
Lawrence W. Cook  
Assistant Attorney General  
Office for Rate Intervention  
P.O. Box 2000  
Frankfort, KY 40602-2000

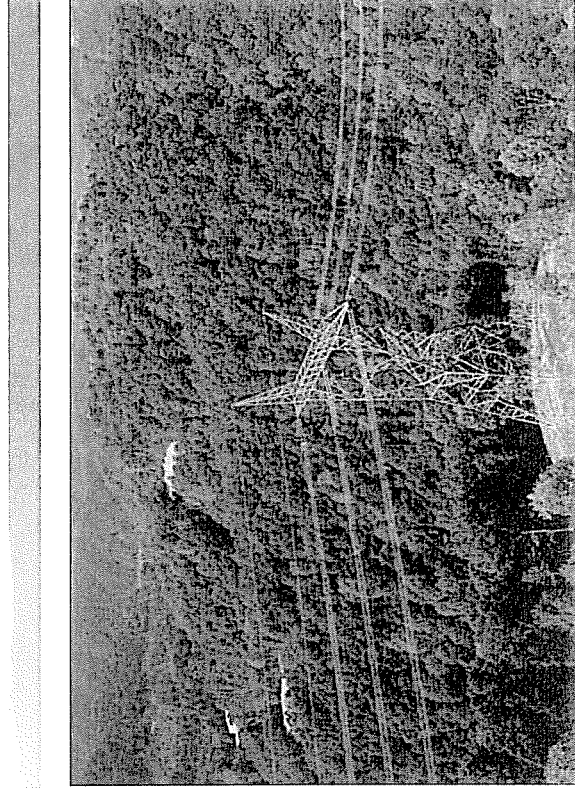
Kristin Henry  
Sierra Club  
85 Second Street  
San Francisco, CA 94105



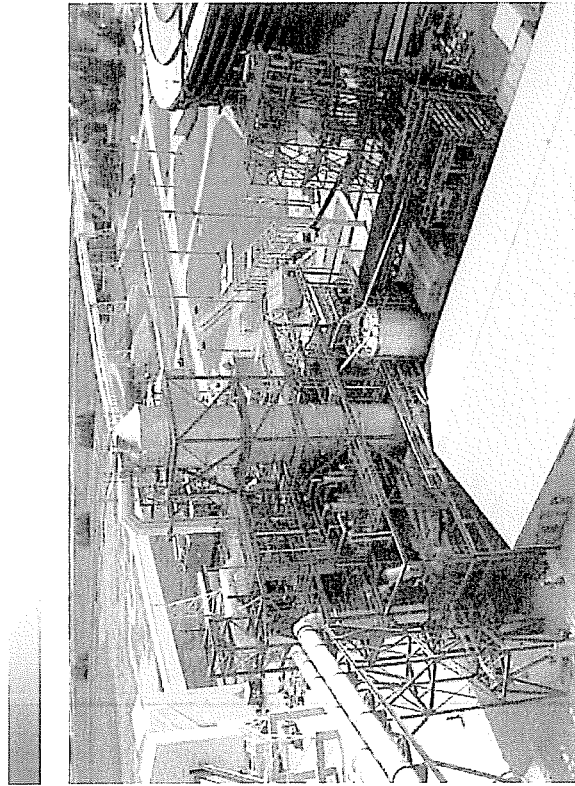
Mark R. Overstreet



Moody's Presentation  
March 2, 2010



765-kV Transmission Line - Wyoming-Jacksons Ferry (WV)



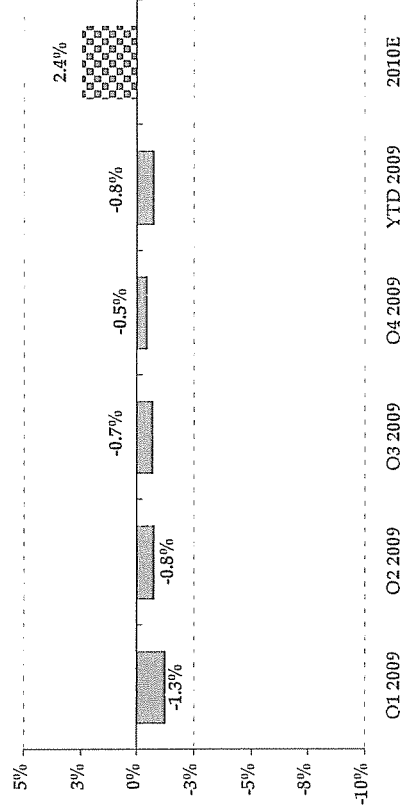
Carbon Capture & Storage Project - Mountaineer Plant (WV)

# Normalized load trends

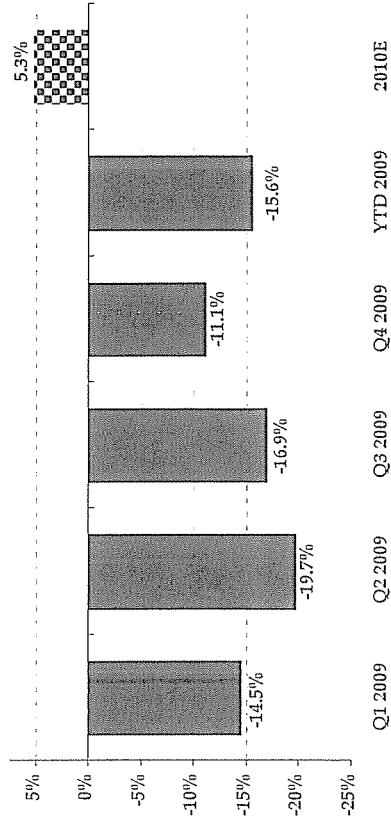
AEP Residential Normalized GWh Growth  
% Change vs. Prior year



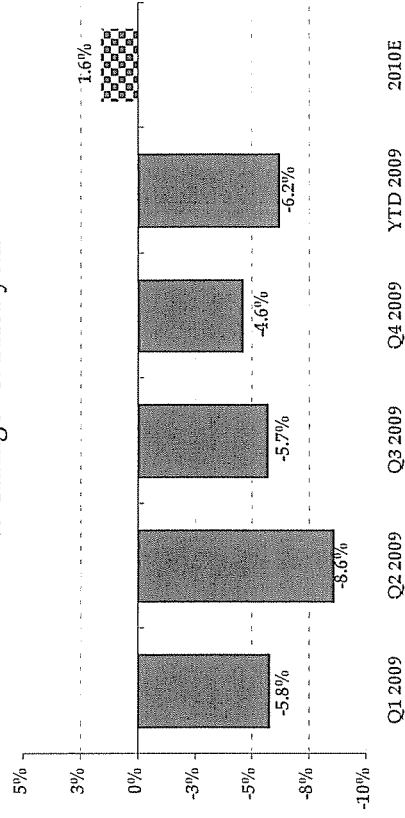
AEP Commercial Normalized GWh Growth  
% Change vs. Prior year



AEP Industrial Normalized GWh Growth  
% Change vs. Prior year



AEP Normalized GWh Growth<sup>1</sup>  
% Change vs. Prior year

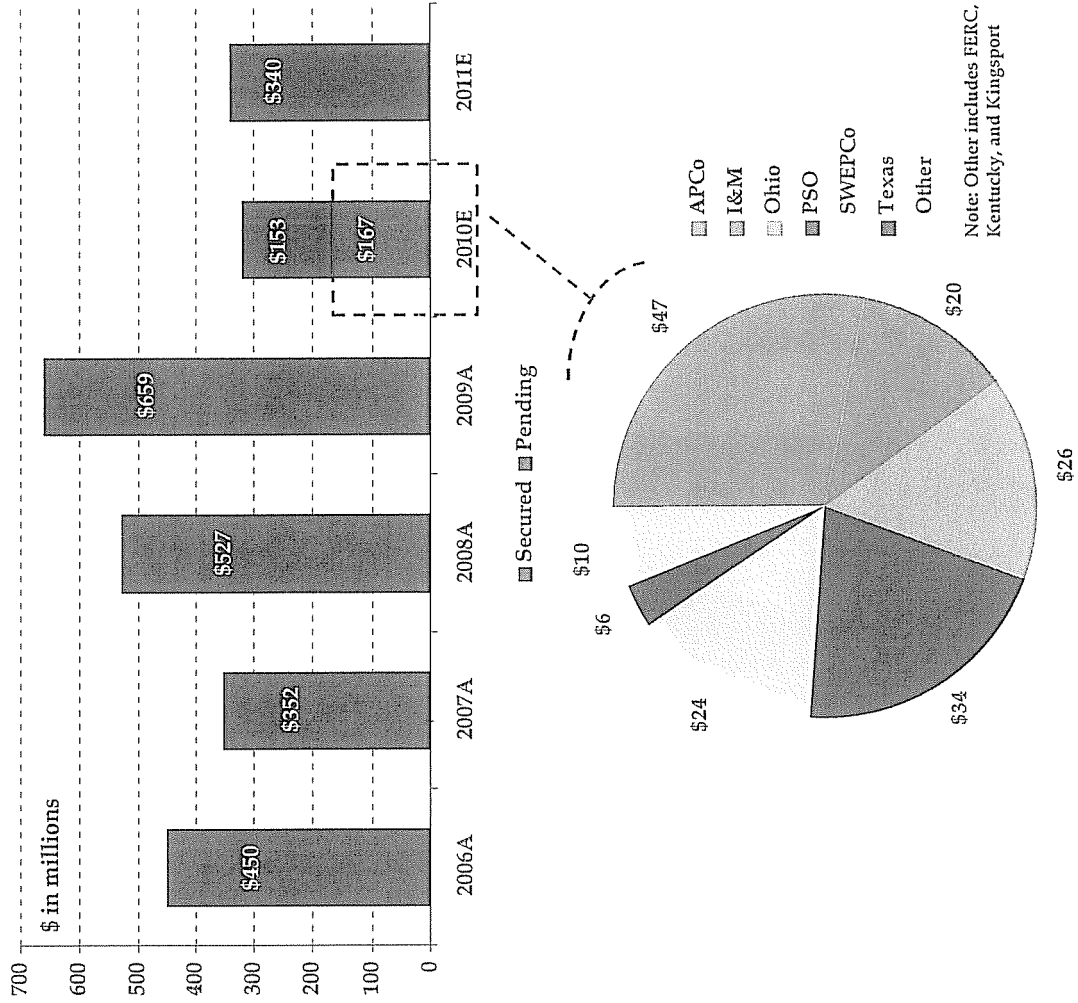


1. Includes firm wholesale load

# Regulatory update

## Summary Rate Case Information

- Kentucky General Rate Case
  - ▶ Requesting an increase of \$123.6M
  - ▶ Rates effective subject to refund – July 2010
  - ▶ Order expected in the second half of 2010



# Utility operations capital expenditures

