

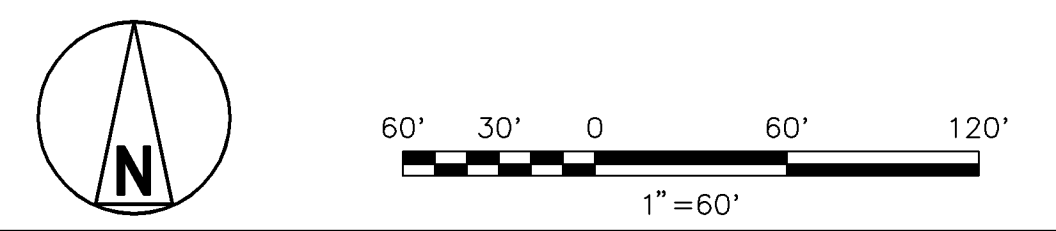
EXISTING FACILITIES LEGEND		
ID	FACILITY	REMARKS
A	UNIT 1 BOILER	
B	UNIT 2 BOILER	
C	UNIT 3 BOILER	
D	COMMON WFGD	
E	UNIT 1 CHIMNEY	NOT IN USE EXCEPT AS VENT
F	UNIT 1 COOLING TOWER	
G	UNIT 2 COOLING TOWER	
H	COAL CONVEYOR	
I	UNIT 3 SCR	FUTURE, BY OTHERS
J	PARKING LOT	TO BE REFIGURED
K	UNIT 2 CHIMNEY	NOT IN USE
L	UNIT 3 CHIMNEY	USED AS BYPASS/VENT
M	COMMON CHIMNEY	
N	SOUTH SUBSTATION	
O	WAREHOUSE NO. 3	TO BE DEMOLISHED
P	LANDFILL	
Q	AMMONIA FACILITY	FUTURE, BY OTHERS
R	FIRE WATER TANK & PUMPHOUSE	
S	TRAINING BUILDING	

NEW FACILITIES LEGEND		
ID	FACILITY	REMARKS
1	UNIT 1 PJFF	
2	UNIT 2 PJFF	
3	UNIT 3 PJFF	
4	UNIT 3 AQCS AREA ELECTRICAL BUILDING	
5	UNIT 3 FLY ASH TRANSFER EQUIPMENT AREA	
6	UNIT 1 SCR	
7	UNIT 2 SCR	
8	UNIT 1/2 AQCS AREA ELECTRICAL BUILDING	
9	UNIT 1/2 FLY ASH TRANSFER EQUIPMENT AREA	
10	COMMON FLY ASH STORAGE SILOS	
11	ASH TRUCK LOADOUT AREA	
12	FLY ASH PIPERACK	
13	FIRE WATER STORAGE TANK	

NOTES:  
 1. SCALE IS APPROXIMATE. EXISTING SITE WAS TRACED FROM KU DRAWING BR0-C-00401, REV A.  
 2. REFER TO SITE ARRANGEMENT DRAWINGS BCDS-1001 AND BCDS-1002 FOR ADDITIONAL DETAIL.

05/02/11 15:16:08  
 2/15/2017 E1  
 A340 16.1b (LMS Tech)

NO	DATE	REVISIONS AND RECORD OF ISSUE	DRN	DES	CHK	PDE	APP
B	21/APR/11	ISSUED FOR CLIENT REVIEW	JWS	JDC	MEH		
A	14/APR/11	ISSUED FOR IN-HOUSE REVIEW	HWB	JDC	MEH		



**BLACK & VEATCH**  
CORPORATION

DRAWN: JWS  
 CHECKED: DATE

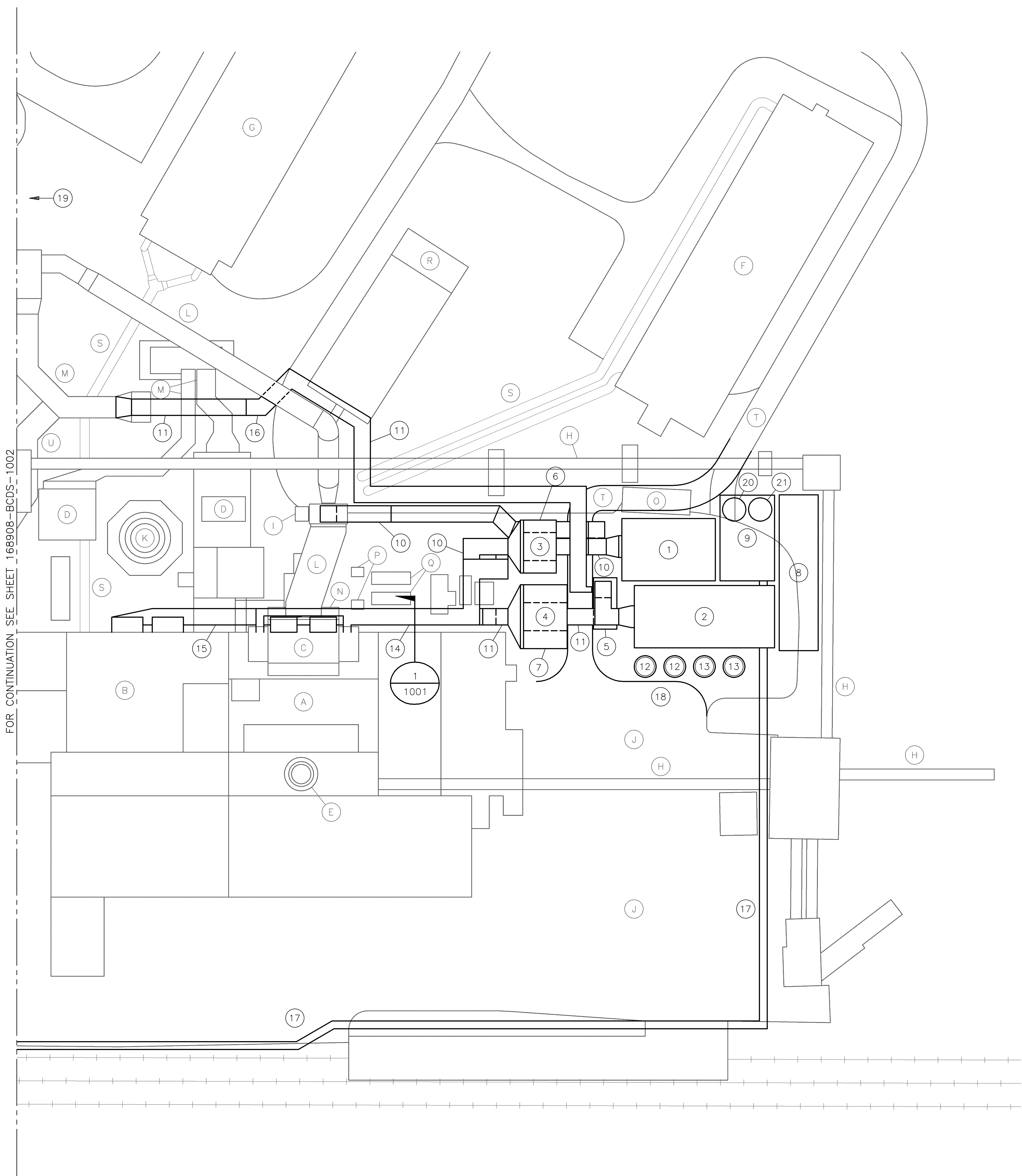
**LG&E/KU-E.W. BROWN STATION**  
 PHASE II: AIR QUALITY CONTROL STUDY

PROJECT: 168908-BCDS-1000  
 DRAWING NUMBER: B  
 REV: B

**SITE PLOT PLAN**

**NOT TO BE USED FOR CONSTRUCTION**

THE DISTRIBUTION AND USE OF THE NATIVE FORMAT CAD FILE OF THIS DRAWING IS UNCONTROLLED. THE USER SHALL VERIFY TRACEABILITY OF THIS DRAWING TO THE LATEST CONTROLLED VERSION.

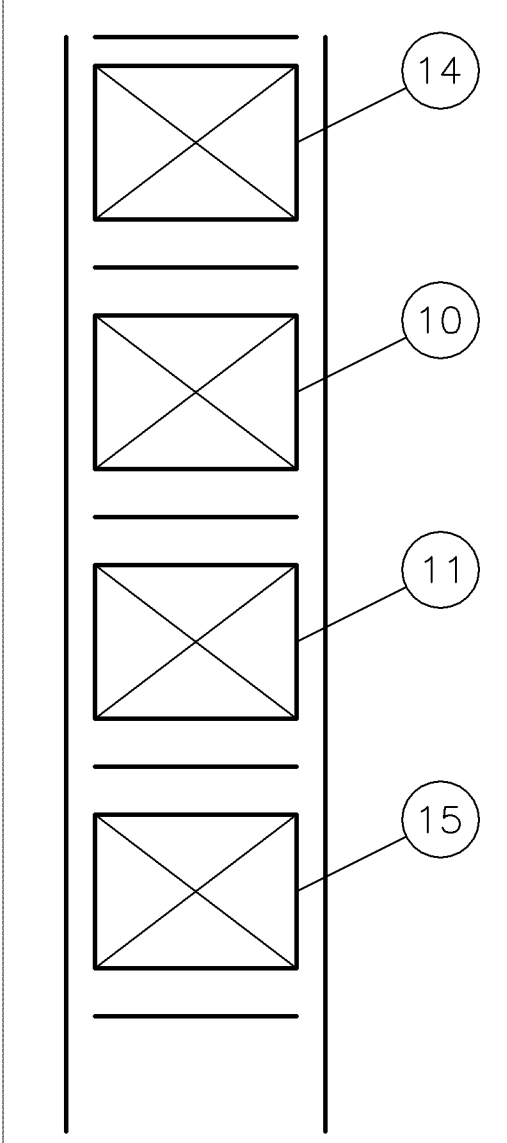


FOR CONTINUATION SEE SHEET 168908-BCDS-1002

EXISTING FACILITIES LEGEND		
ID	FACILITY	REMARKS
A	UNIT 1 BOILER	
B	UNIT 2 BOILER	
C	UNIT 1 ELECTROSTATIC PRECIPITATOR	TO BE ABANDONED
D	UNIT 2 ELECTROSTATIC PRECIPITATOR	TO BE ABANDONED
E	UNIT 1 CHIMNEY	NOT IN USE EXCEPT AS VENT (NOTE 2)
F	UNIT 1 COOLING TOWER	
G	UNIT 2 COOLING TOWER	
H	COAL CONVEYOR 3	
I	UNIT 1 ID FAN	TO BE REVISED IN PLACE
J	PARKING LOT	TO BE RECONFIGURED
K	UNIT 2 CHIMNEY	NOT IN USE
L	UNIT 1 EXHAUST DUCTWORK	TO BE REMOVED AS REQUIRED
M	UNIT 2 EXHAUST DUCTWORK	TO BE REMOVED AS REQUIRED
N	WATER TREATMENT ANNEX ROOM	TO BE DEMOLISHED
O	ORIGINAL OIL STORAGE BUILDING	TO BE DEMOLISHED
P	UNIT 1 CIRCULATING WATER PUMPS	
Q	CHEMICAL TANKS	TO BE REMOVED
R	NEW OIL STORAGE BUILDING	
S	CIRC WATER PIPING	
T	UNIT 1 COOLING TOWER ROAD	TO BE REESTABLISHED
U	UNIT 2 BYPASS DUCT	TO BE USED FOR UNIT 1 & 2

NEW FACILITIES LEGEND		
ID	FACILITY	REMARKS
1	UNIT 1 PJFF	
2	UNIT 2 PJFF	
3	UNIT 1 AIR HEATER AND PREHEAT COIL	BENEATH SCR
4	UNIT 2 AIR HEATER AND PREHEAT COIL	BENEATH SCR
5	UNIT 2 ID FAN	
6	UNIT 1 SCR	
7	UNIT 2 SCR	
8	UNIT 1/2 AGCS AREA ELECTRICAL BUILDING	
9	UNIT 1/2 FLY ASH TRANSFER EQUIPMENT AREA	
10	UNIT 1 EXHAUST DUCTWORK	
11	UNIT 2 EXHAUST DUCTWORK	
12	UNIT 1/2 SORBENT SILO AND TRANSFER EQUIPMENT	
13	UNIT 1/2 PAC SILO AND TRANSFER EQUIPMENT	
14	UNIT 1 COMBUSTION AIR DUCTWORK	
15	UNIT 2 COMBUSTION AIR DUCTWORK	
16	UNIT 1 BYPASS DUCT TO UNIT 2 DUCT	
17	UNIT 1/UNIT 2 COMMON FLY ASH PIPERACK	
18	BULK TRUCK UNLOADING STATION	
19	UNIT 1/UNIT 2 MAIN AUX TRANSFORMER	SEE DWG 1002
20	UNIT 1 FLY ASH TRANSFER TANK	
21	UNIT 2 FLY ASH TRANSFER TANK	

- NOTES:**
- SCALE IS APPROXIMATE. EXISTING SITE WAS TRACED FROM KU DRAWING BR0-C-00401, REV A.
  - UNIT 1 CHIMNEY (ITEM E) USED AS BOILER VENT FOR UNIT 1.



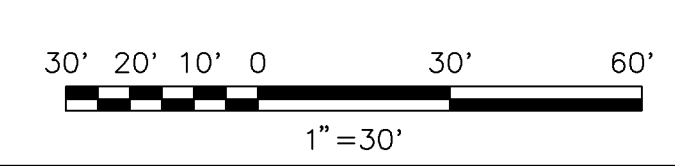
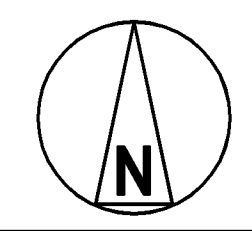
SECTION 1

**NOT TO BE USED FOR CONSTRUCTION**

THE DISTRIBUTION AND USE OF THE NATIVE FORMAT CAD FILE OF THIS DRAWING IS UNCONTROLLED. THE USER SHALL VERIFY TRACEABILITY OF THIS DRAWING TO THE LATEST CONTROLLED VERSION.

168908-BCDS-1001  
 05/02/11 15:16:27  
 E1  
 (LMS Tech)

NO	DATE	REVISIONS AND RECORD OF ISSUE	DRN	DES	CHK	PDE	APP
B	21/APR/11	ISSUED FOR CLIENT REVIEW	JWS	JDC	MEH		
A	14/APR/11	ISSUED FOR IN-HOUSE REVIEW	HWS	JDC	MEH		



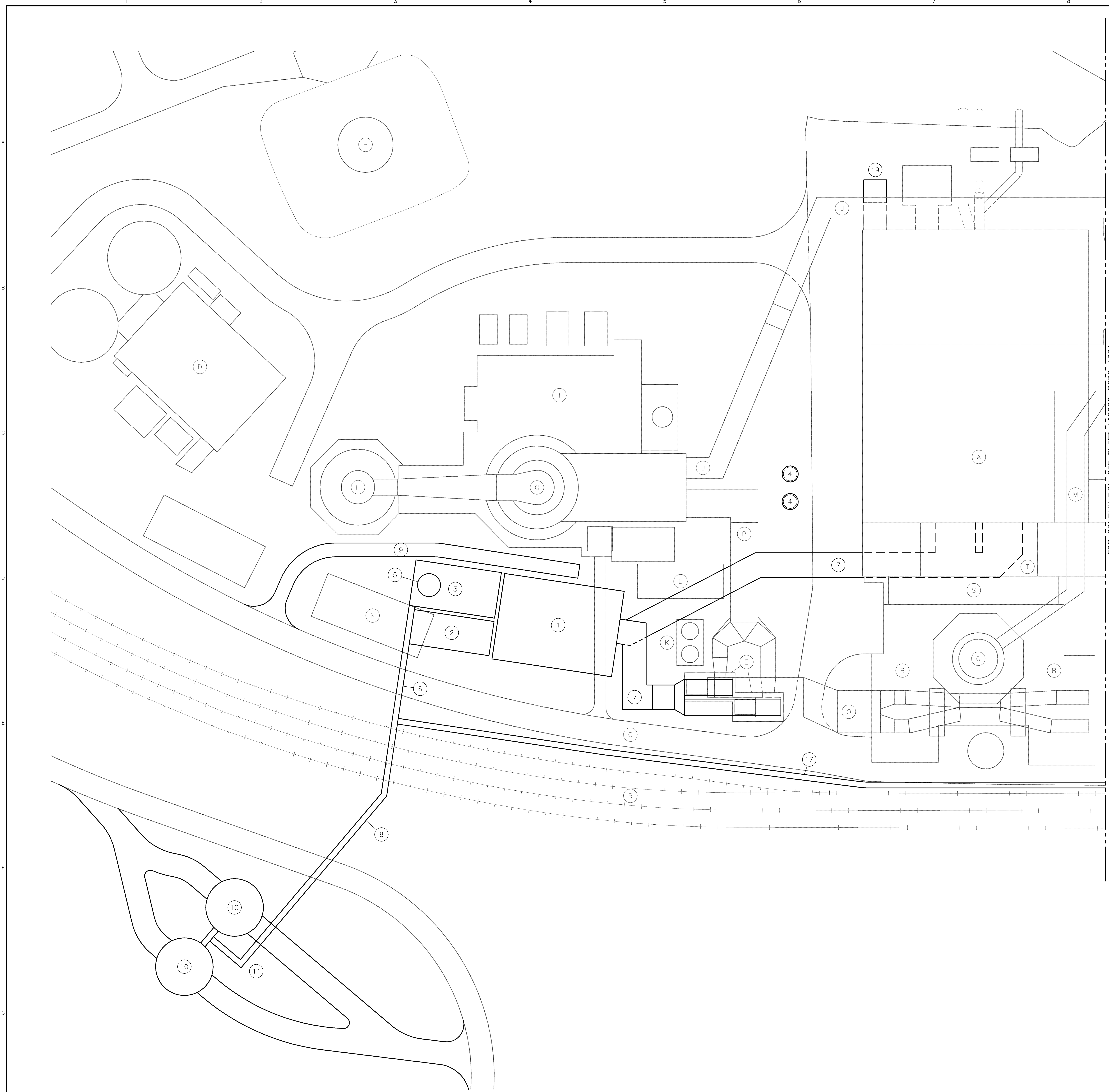
**BLACK & VEATCH CORPORATION**

DRAWN: JWS  
 CHECKED: DATE

LG&E/KU-E.W. BROWN STATION  
 PHASE II: AIR QUALITY CONTROL STUDY

SITE ARRANGEMENT  
 UNIT 1 AND UNIT 2

PROJECT	DRAWING NUMBER	REV
168908-BCDS-1001		B
CODE	AREA	



FOR CONTINUATION SEE SHEET 168908-BCDS-1001

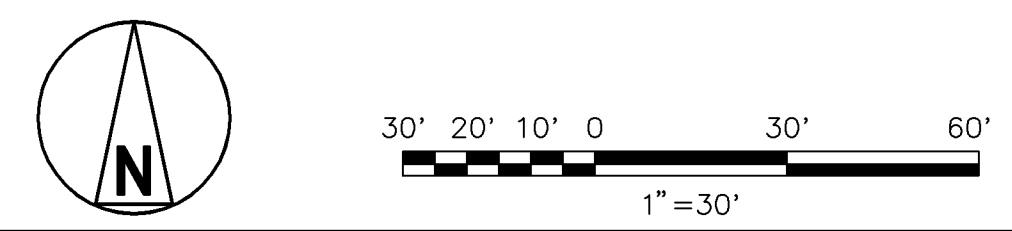
EXISTING FACILITIES LEGEND		
ID	FACILITY	REMARKS
A	UNIT 3 BOILER	
B	UNIT 3 SECONDARY ELECTROSTATIC PRECIPITATOR	ABANDON IN PLACE
C	COMMON WET FGD	
D	LIMESTONE PREP AREA	
E	UNIT 3 ID FANS	
F	COMMON CHIMNEY	
G	UNIT 3 CHIMNEY	USED AS BYPASS/VENT (NOTE 2)
H	FUEL OIL TANK	
I	COMMON FGD PUMP BUILDING	
J	UNIT 1 & 2 EXHAUST DUCT	
K	UNIT 3 SORBENT SILO	FUTURE, BY OTHERS
L	RESERVED FOR UNIT 3 SO3 MITIGATION EQUIPMENT	FUTURE, BY OTHERS
M	UNIT 2 BYPASS DUCT	TO BE USED BY U1 & U2
N	WAREHOUSE NO. 3	TO BE DEMOLISHED
O	UNIT 3 ID INLET DUCTS	RETAIN AS REQUIRED FOR BYPASS VENT
P	UNIT 3 EXHAUST DUCT	
Q	MAIN ACCESS ROAD	
R	ONSITE RAIL SPUR	
S	UNIT 3 PRIMARY ESP	DEMOLISHED AS REQ'D
T	UNIT 3 SCR	FUTURE, BY OTHERS

NEW FACILITIES LEGEND		
ID	FACILITY	REMARKS
1	UNIT 3 PUFF	
2	UNIT 3 AQCS AREA ELECTRICAL BUILDING	
3	UNIT 3 FLY ASH HANDLING EQUIPMENT	
4	UNIT 3 PAC SILO & TRANSFER EQUIPMENT	
5	UNIT 3 FLY ASH TRANSFER TANK	
6	UNIT 3 FLY ASH PIPERACK	
7	UNIT 3 EXHAUST DUCTWORK	
8	COMMON FLY ASH PIPERACK	OVER ROAD & R.R.
9	ACCESS ROAD TO WFGD	
10	FLY ASH STORAGE SILO	
11	ASH TRUCK LOADOUT AREA	
17	UNIT 1/UNIT 2 FLY ASH PIPERACK	
19	UNIT 1/UNIT 2 MAIN AUX TRANSFORMER	SEE DWG 1001

- NOTES:
- SCALE IS APPROXIMATE. EXISTING SITE WAS TRACED FROM KU DRAWING BR0-C-00401, REV A.
  - UNIT 3 CHIMNEY (ITEM G) USED AS BOILER VENT FOR UNITS 2 AND 3 AND BYPASS CHIMNEY FOR UNITS 1 AND 2.

05/02/11 15:15:49  
 2/MS/2011 E1  
 ACD 16.1b (LMS Tech)

NO	DATE	REVISIONS AND RECORD OF ISSUE	DRN	DES	CHK	PDE	APP
B	21/APR/11	ISSUED FOR CLIENT REVIEW	JWS	JDC	MEH		
A	14/APR/11	ISSUED FOR IN-HOUSE REVIEW	JWS	JDC	MEH		



**BLACK & VEATCH**  
CORPORATION

DRAWN: JWS  
CHECKED: DATE

**LG&E/KU-E.W. BROWN STATION**  
PHASE II: AIR QUALITY CONTROL STUDY

PROJECT: 168908-BCDS-1002  
DRAWING NUMBER: B

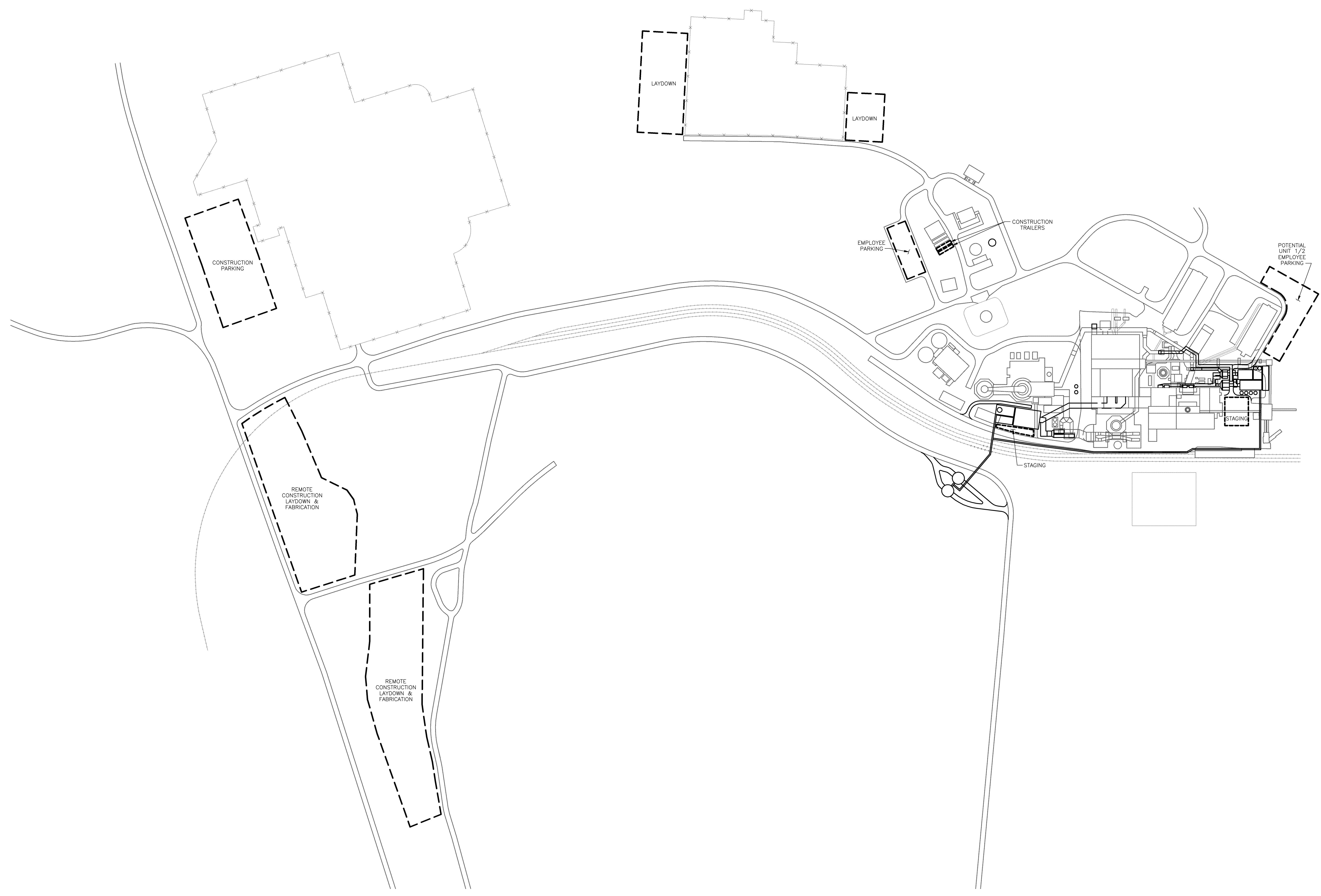
**SITE ARRANGEMENT**  
UNIT 3

CODE: AREA:

**NOT TO BE USED FOR CONSTRUCTION**

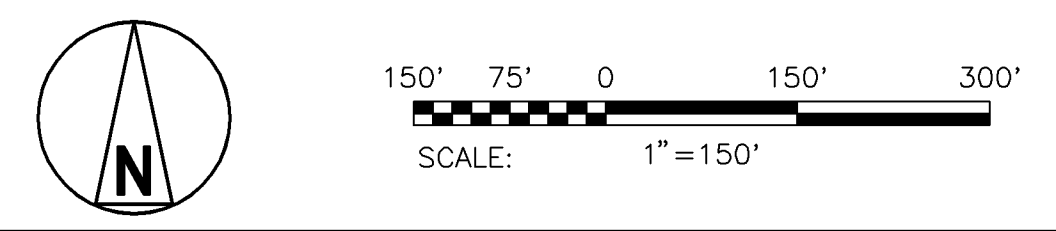
THE DISTRIBUTION AND USE OF THE NATIVE FORMAT CAD FILE OF THIS DRAWING IS UNCONTROLLED. THE USER SHALL VERIFY TRACEABILITY OF THIS DRAWING TO THE LATEST CONTROLLED VERSION.

- NOTES:
- SCALE IS APPROXIMATE. EXISTING SITE WAS TRACED FROM KU DRAWING BRO-C-00301, REV A.
  - REFER TO SITE ARRANGEMENT DRAWINGS 168908-BCDS-1001 AND 168908-BCDS-1002 AND SITE PLOT PLAN BCDS-1000 FOR ADDITIONAL DETAIL.



168908-BCDS-1003  
 05/02/11 15:13:21  
 E1  
 ACAD 16.1b (LMS Tech)

NO	DATE	REVISIONS AND RECORD OF ISSUE	DRN	DES	CHK	PDE	APP
B	21/APR/11	ISSUED FOR CLIENT REVIEW	JWS	JDC	MEH		
A	14/APR/11	ISSUED FOR IN-HOUSE REVIEW	HWB	JDC	MEH		



**BLACK & VEATCH**  
CORPORATION

DRAWN: JWS  
CHECKED: DATE

**LG&E/KU-E.W. BROWN STATION**  
**PHASE II: AIR QUALITY CONTROL STUDY**

CONSTRUCTION FACILITIES  
PLOT PLAN

PROJECT	DRAWING NUMBER	REV
168908-BCDS-1003		B
CODE	AREA	

**NOT TO BE USED FOR CONSTRUCTION**

THE DISTRIBUTION AND USE OF THE NATIVE FORMAT CAD FILE OF THIS DRAWING IS UNCONTROLLED. THE USER SHALL VERIFY TRACEABILITY OF THIS DRAWING TO THE LATEST CONTROLLED VERSION.