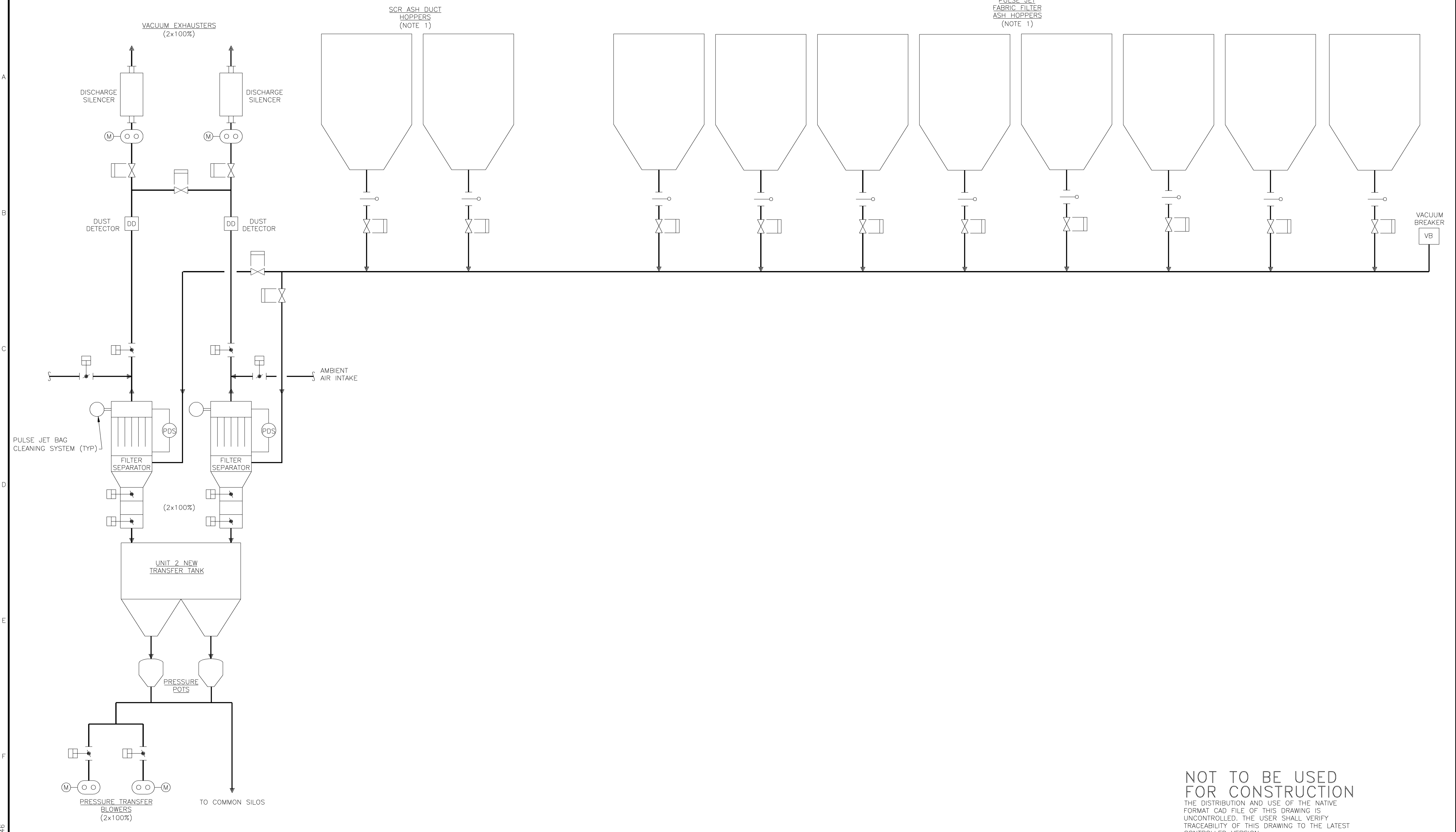


- NOTES:
1. NUMBER OF HOPPERS TO BE CONFIRMED DURING DETAILED DESIGN.
 2. SIZE AND QUANTITY OF ADDITIONAL EQUIPMENT REQUIRED TO BE DETERMINED DURING DETAILED DESIGN.



NOT TO BE USED FOR CONSTRUCTION
 THE DISTRIBUTION AND USE OF THE NATIVE FORMAT CAD FILE OF THIS DRAWING IS UNCONTROLLED. THE USER SHALL VERIFY TRACEABILITY OF THIS DRAWING TO THE LATEST CONTROLLED VERSION.

WIL51161 ACAD 16.1s (LMS Tech)
 24/06/11 11:20:46
 D1
 I=1

NO	DATE	REVISIONS AND RECORD OF ISSUE	DRN	DES	CHK	PDE	APP
B	6/APR/11	ISSUED FOR CLIENT REVIEW	PMW	SAT	MRW		
A	16/MAR/11	ISSUED FOR IN HOUSE REVIEW	PRP	SAT	MRW		

BLACK & VEATCH CORPORATION

CHECKED: _____ DATE: _____

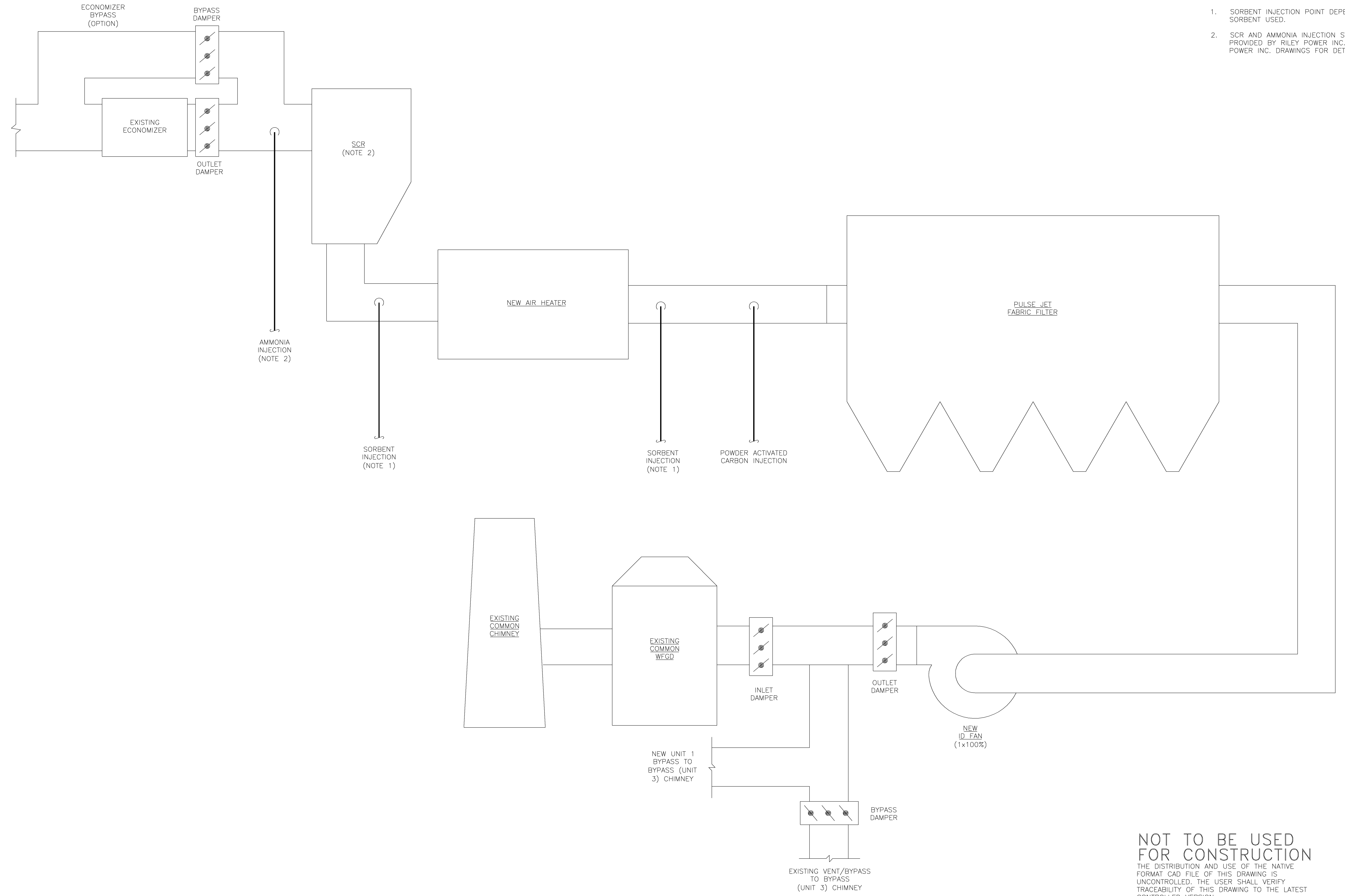
DRAWN: PRP

LG&E/KU - E.W. BROWN STATION
PHASE II: AIR QUALITY CONTROL STUDY

UNIT 2 PROCESS FLOW DIAGRAM
 FLY ASH HANDLING

PROJECT	DRAWING NUMBER	REV
168908-B2ASB-M2022		B
CODE	AREA	

- NOTES:**
1. SORBENT INJECTION POINT DEPENDENT ON SORBENT USED.
 2. SCR AND AMMONIA INJECTION SYSTEMS ARE PROVIDED BY RILEY POWER INC. REFER TO RILEY POWER INC. DRAWINGS FOR DETAILS.



NOT TO BE USED FOR CONSTRUCTION
 THE DISTRIBUTION AND USE OF THE NATIVE FORMAT CAD FILE OF THIS DRAWING IS UNCONTROLLED. THE USER SHALL VERIFY TRACEABILITY OF THIS DRAWING TO THE LATEST CONTROLLED VERSION.

WLS1161 ACAD 16.1s (LMS Tech)
 04/27/11 11:48:28

NO	DATE	REVISIONS AND RECORD OF ISSUE	DRN	DES	CHK	PDE	APP
B	6/APR/11	ISSUED FOR CLIENT REVIEW	PMW	SAT	MRW		
A	16/MAR/11	ISSUED FOR IN HOUSE REVIEW	PRP	SAT	MRW		

BLACK & VEATCH CORPORATION

CHECKED: _____ DATE: _____
 DRAWN: PRP

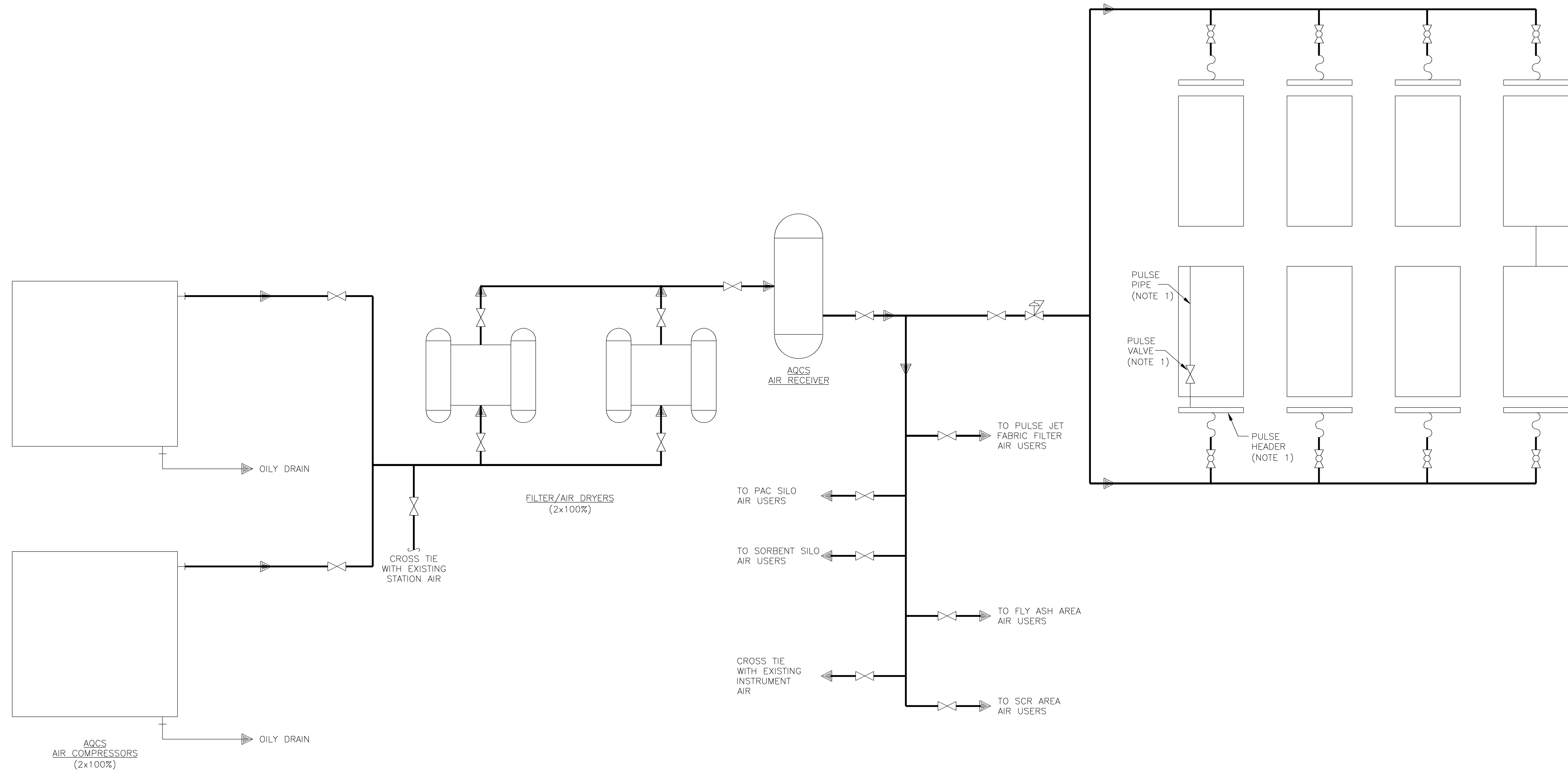
LG&E/KU – E.W. BROWN STATION
PHASE II: AIR QUALITY CONTROL STUDY

UNIT 2 PROCESS FLOW DIAGRAM
 INDUCED DRAFT

PROJECT	DRAWING NUMBER	REV
168908-B2CCE-M2145		B
CODE	AREA	

NOTES:

1. EACH COMPARTMENT WILL HAVE MORE THAN ONE PULSE HEADER AND MULTIPLE PULSE VALVES AND PULSE PIPES. ONE SET IS SHOWN FOR CLARITY.
2. NUMBER OF COMPARTMENTS TO BE CONFIRMED DURING DETAILED DESIGN.



NOT TO BE USED FOR CONSTRUCTION

THE DISTRIBUTION AND USE OF THE NATIVE FORMAT CAD FILE OF THIS DRAWING IS UNCONTROLLED. THE USER SHALL VERIFY TRACEABILITY OF THIS DRAWING TO THE LATEST CONTROLLED VERSION.

WIL51161 D1 ACAD 16.1s (LMS Tech)
 04/06/11 13:04:16

NO	DATE	REVISIONS AND RECORD OF ISSUE	DRN	DES	CHK	PDE	APP
B	6/APR/11	ISSUED FOR CLIENT REVIEW	PMW	SAT	MRW		
A	16/MAR/11	ISSUED FOR IN HOUSE REVIEW	PRF	SAT	MRW		

BLACK & VEATCH CORPORATION

DRAWN: HWB
 CHECKED: _____ DATE: _____

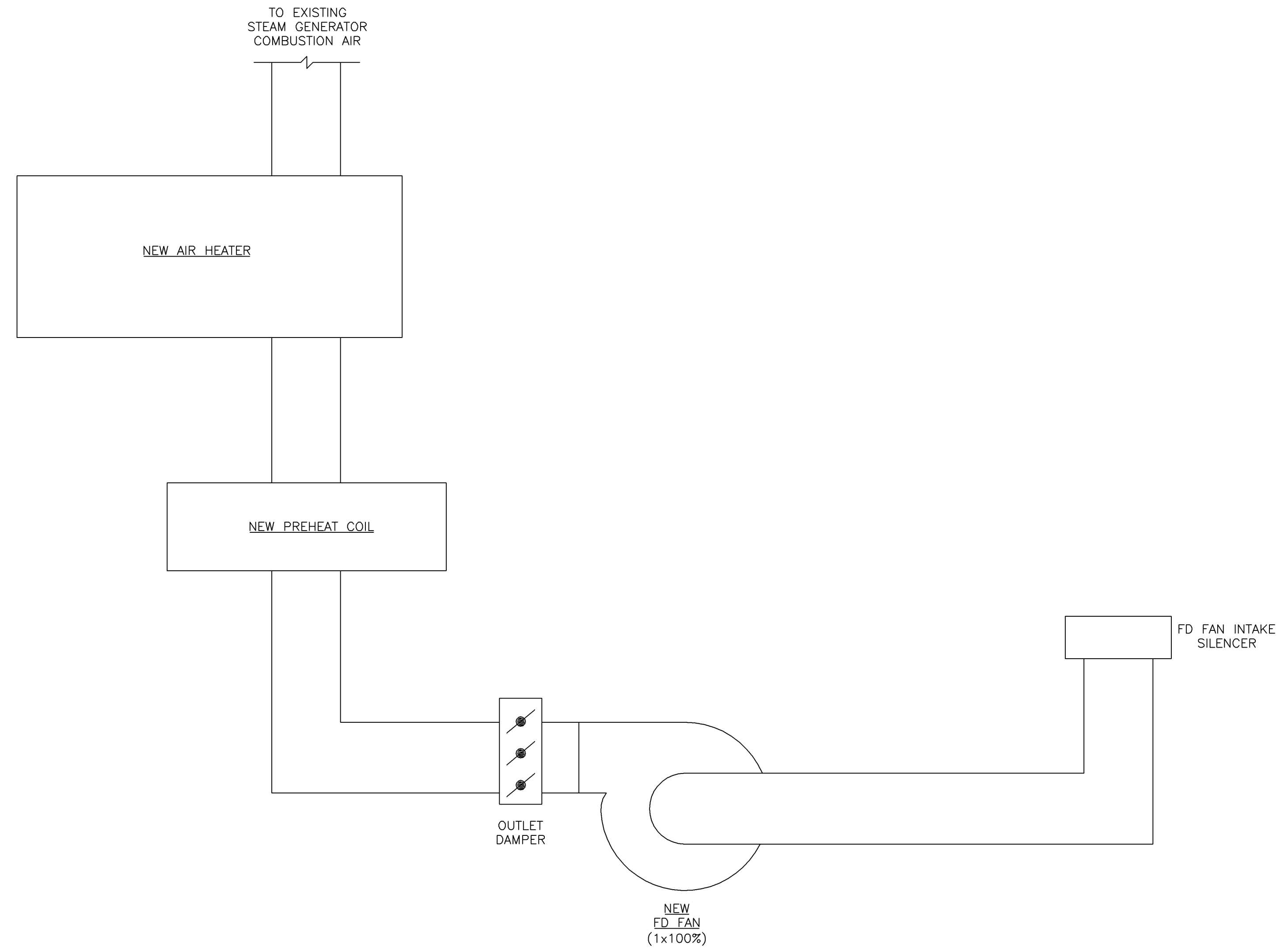
**LG&E/KU – E.W. BROWN STATION
 PHASE II: AIR QUALITY CONTROL STUDY**

UNIT 2 PROCESS FLOW DIAGRAM
 AQCS COMPRESSED AIR

PROJECT	DRAWING NUMBER	REV
168908-B2CAB-M2182		B
CODE	AREA	

1 2 3 4 5 6 7 8 9 10

A
B
C
D
E
F



NOT TO BE USED FOR CONSTRUCTION
 THE DISTRIBUTION AND USE OF THE NATIVE FORMAT CAD FILE OF THIS DRAWING IS UNCONTROLLED. THE USER SHALL VERIFY TRACEABILITY OF THIS DRAWING TO THE LATEST CONTROLLED VERSION.

WLS1161 ACAD 16.1s (LMS Tech)
 04/27/11 12:42:40
 D1
 1=1

NO	DATE	REVISIONS AND RECORD OF ISSUE	DRN	DES	CHK	PDE	APP
B	6/APR/11	ISSUED FOR CLIENT REVIEW	PMW	SAT	MRW		
A	16/MAR/11	ISSUED FOR IN HOUSE REVIEW	PRP	SAT	MRW		

BLACK & VEATCH CORPORATION

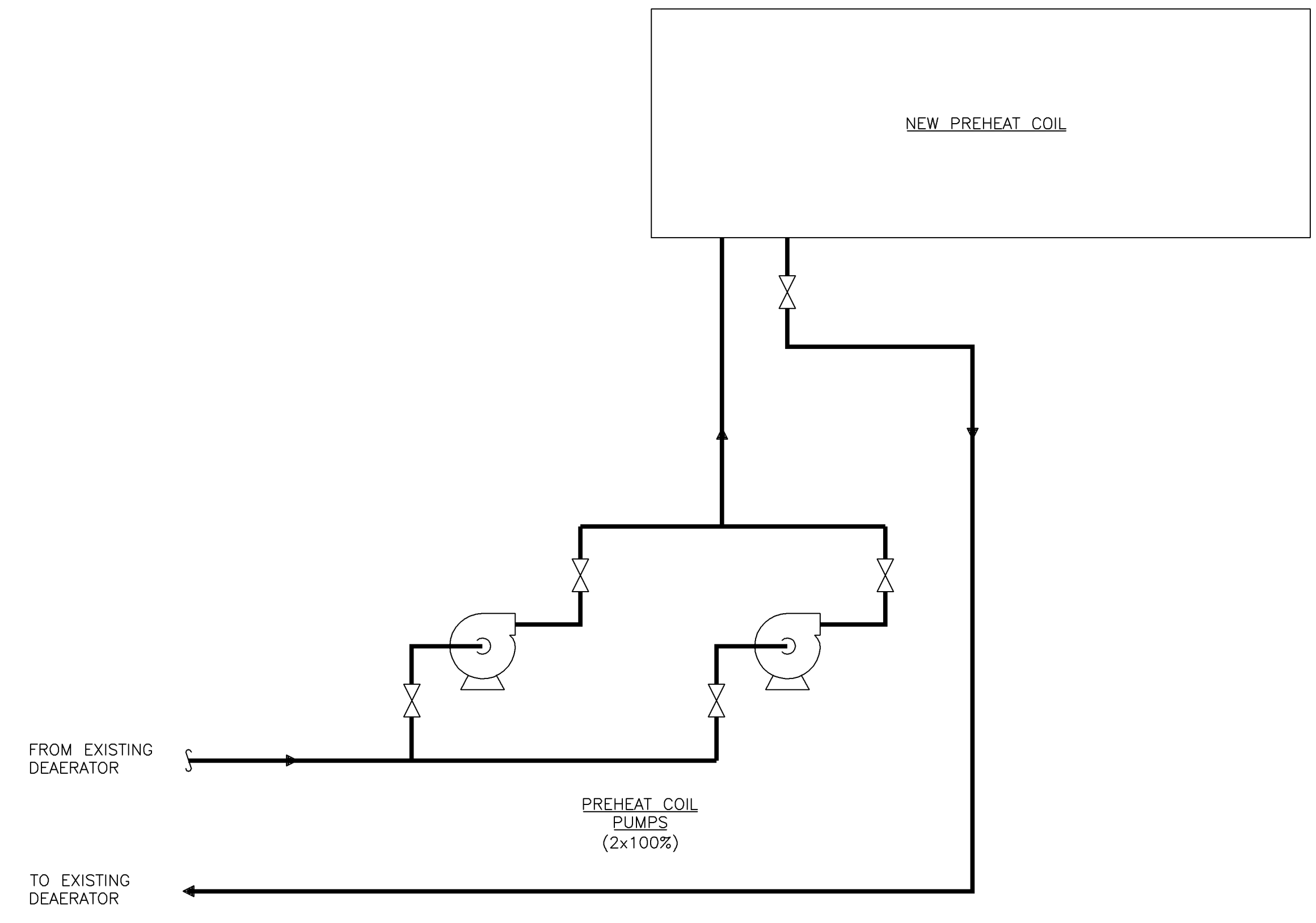
CHECKED: _____ DATE: _____

DRAWN: PRP

LG&E/KU – E.W. BROWN STATION
PHASE II: AIR QUALITY CONTROL STUDY

UNIT 2 PROCESS FLOW DIAGRAM
 COMBUSTION AIR

PROJECT	DRAWING NUMBER	REV
168908-B2SGB-M2582		B
CODE	AREA	



NOT TO BE USED FOR CONSTRUCTION
 THE DISTRIBUTION AND USE OF THE NATIVE FORMAT CAD FILE OF THIS DRAWING IS UNCONTROLLED. THE USER SHALL VERIFY TRACEABILITY OF THIS DRAWING TO THE LATEST CONTROLLED VERSION.

WLS1161 ACAD 16.1s (LMS Tech)
 04/27/11 12:44:03

NO	DATE	REVISIONS AND RECORD OF ISSUE	DRN	DES	CHK	PDE	APP
B	6/APR/11	ISSUED FOR CLIENT REVIEW	PMW	SAT		MRW	
A	16/MAR/11	ISSUED FOR IN HOUSE REVIEW	PRP	SAT		MRW	

BLACK & VEATCH CORPORATION

CHECKED: _____ DATE: _____

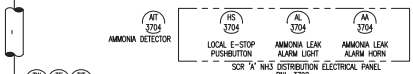
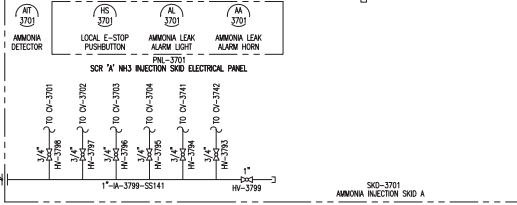
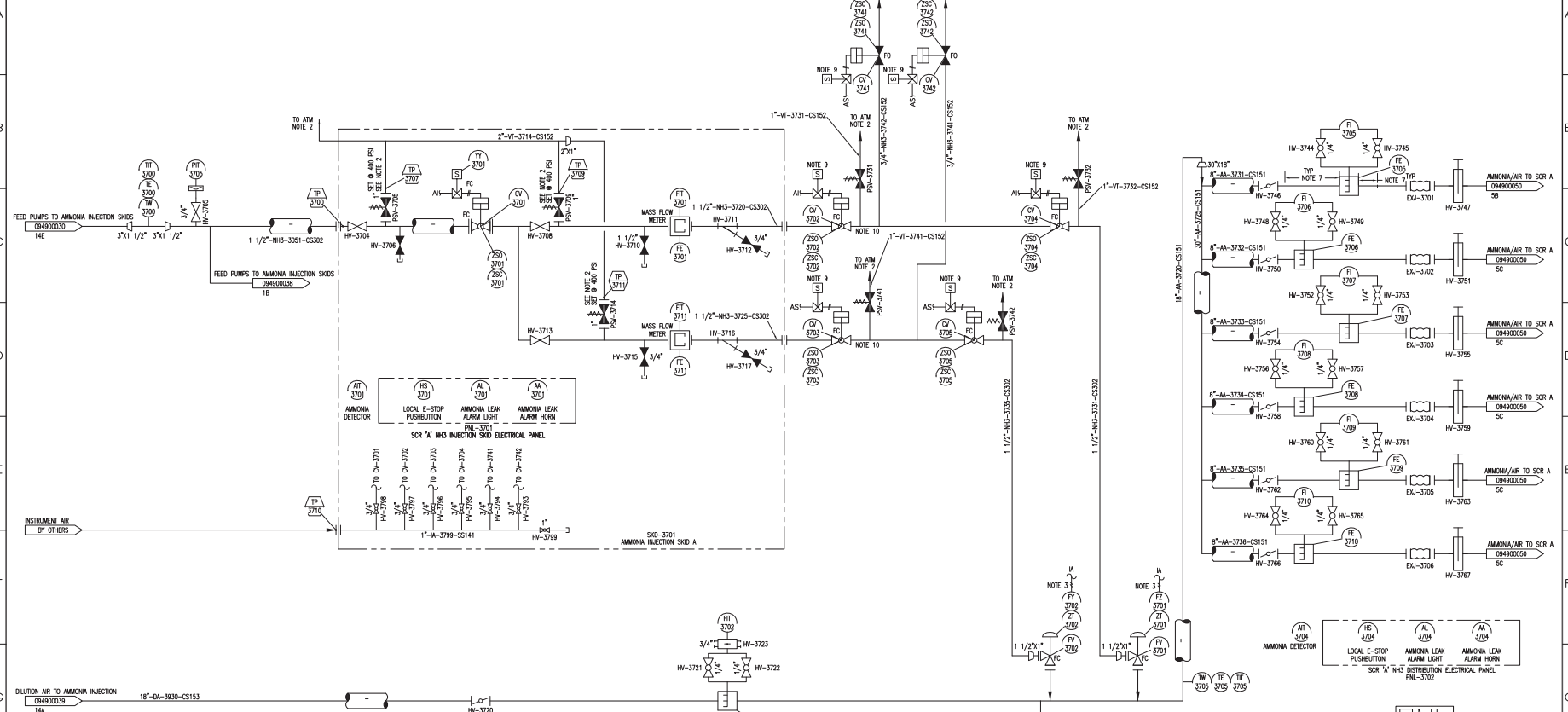
DRAWN: PRP

LG&E/KU – E.W. BROWN STATION
 PHASE II: AIR QUALITY CONTROL STUDY

UNIT 2 PROCESS FLOW DIAGRAM
 AIR PREHEAT

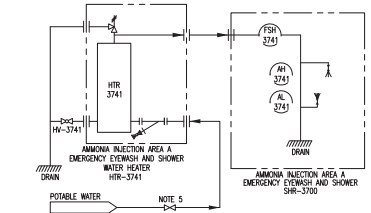
PROJECT	DRAWING NUMBER	REV
168908-B2SGC-M2583		B
CODE	AREA	

DWG NO: 502651-094900037



PNL-3703
NH3 INJECTION/DEPLETION AIR TO REACTOR TIES

- NOTE:
1. IF AMMONIA INJECTION SKIDS ARE IN CLOSE PROXIMITY TO EACH OTHER, ONLY ONE EMERGENCY SHOWER SKID IS REQUIRED.
 2. NH3 VENTS ARE FIELD INSTALLED BY CONTRACTOR IN ACCORDANCE TO CGA CODE G-2 Sec 19.4 AND ANSI M1.1 Sec 4.3. LOCATE ALL VENTS 10' ABOVE NEAREST WORKING PLATFORM WITHIN 40'.
 3. INSTRUMENT AIR PROVIDED VIA SKID CONNECTION TP-3710.
 4. EACH PNEUMATIC VALVE IS EQUIPPED WITH A FILTER REGULATOR (NOT SHOWN FOR CLARITY).
 5. POTABLE WATER ISOLATION VALVE IS BY OTHERS.
 6. ALL PIPE SIZES AND NUMBER OF LANCES PRELIMINARY.
 7. ALLOW A QUARTER TURN FROM STRAIGHT PIPE RUN AND 1" DIAMETER STRAIGHT PIPE RUN CONSTRUCTION FROM FLOW ELONG.
 8. ALL INTERCONNECTING AMMONIA PIPING BY OTHERS.
 9. VALVE SOLENOID SHALL BE WIRED DIRECTLY TO MFT RELAY CONTACTS.
 10. MINIMIZE DISTANCE FROM THIS VALVE TO CORRESPONDING INJECTION VALVE.



THIS DRAWING IS CONCEPTUAL IN NATURE AND IS NOT A COMPLETE OR FINAL WORK PRODUCT. THE ILLUSTRATED PROCESSES, SYSTEMS, DIMENSIONS, PARTS AND EQUIPMENT SET FORTH ON THIS DRAWING ARE PRELIMINARY AND SUBJECT TO REVISION. THIS DRAWING IS NOT SUITABLE FOR PROCUREMENT, MANUFACTURE OR INSTALLATION.

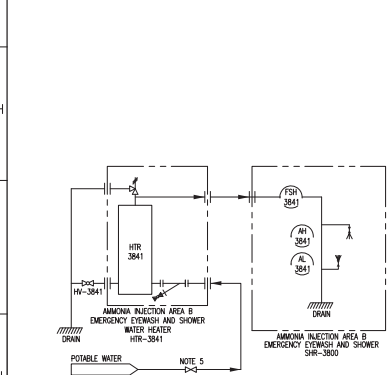
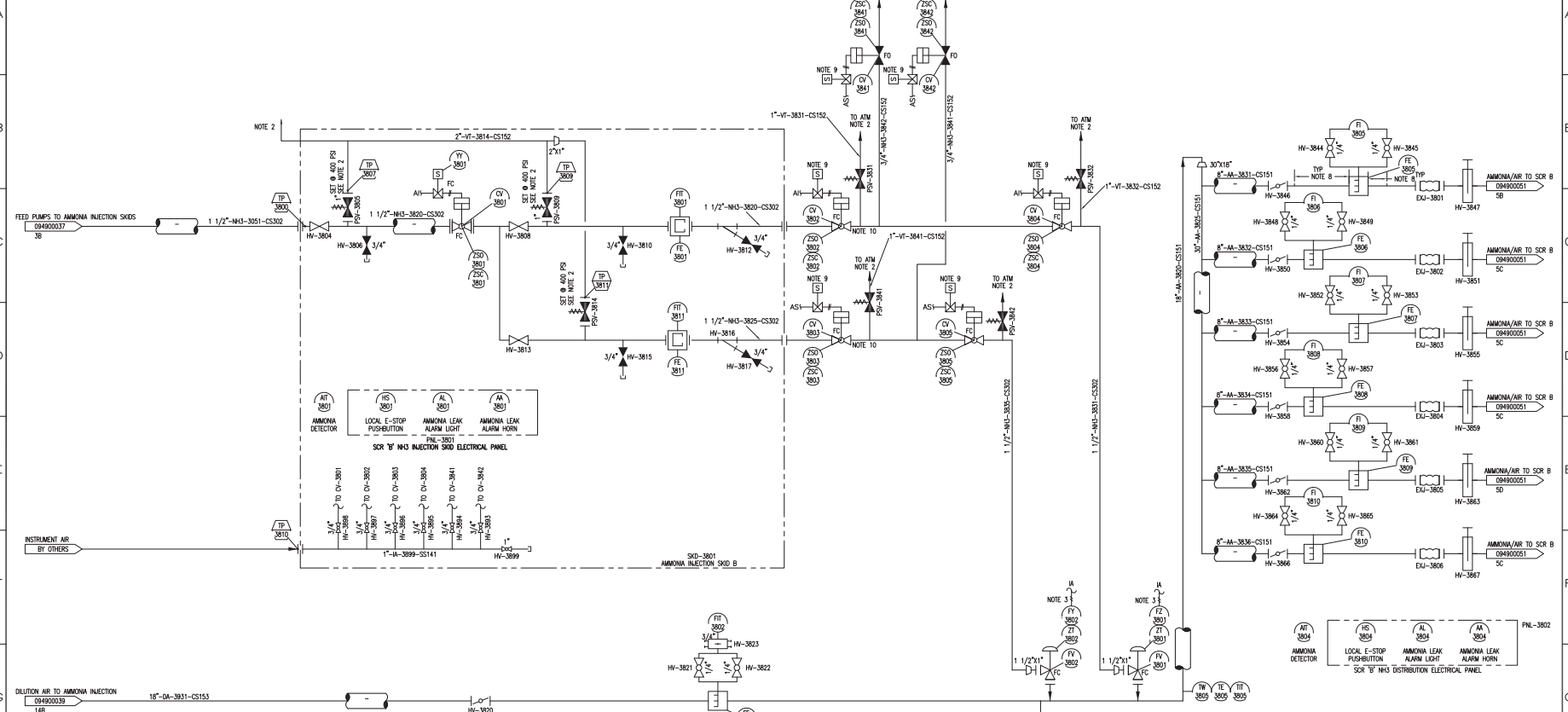
REVISION	NO.	BY	CHK.	DATE	APPRO.	DATE

Copyright 2011 Riley Power Inc. - All Rights Reserved
 This drawing is not approved for construction unless it complies with the specifications and conditions of the contract.
 THIS DRAWING IS NOT APPROVED FOR CONSTRUCTION UNLESS IT COMPLES WITH THE SPECIFICATIONS AND CONDITIONS OF THE CONTRACT.

DO NOT SCALE
 USE DIMENSIONS ONLY

RILEY POWER INC.
 PIPING AND INSTRUMENTATION DIAGRAMS
 AMMONIA INJECTION SYSTEM A
 LG&E/KU
 BROWN STATION - UNITS 1 & 2
 HERRINGTON LAKE, KENTUCKY
 DATE: 02/17/11
 SCALE: AS SHOWN
 DWG NO: 502651-094900037-PO

DWG NO: 502651-094900038



AMMONIA DETECTOR
LOCAL E-STOP PUSHBUTTON
AMMONIA LEAK ALARM LIGHT
AMMONIA LEAK ALARM HORN
PNL-3801
SCR 'B' NH3 INJECTION SKID ELECTRICAL PANEL

AMMONIA DETECTOR
LOCAL E-STOP PUSHBUTTON
AMMONIA LEAK ALARM LIGHT
AMMONIA LEAK ALARM HORN
PNL-3802
SCR 'B' NH3 DISTRIBUTION ELECTRICAL PANEL

PNL-3803
SCR 'B' NH3 INJECTION/DILUTION AIR TEMPERATURE PANEL

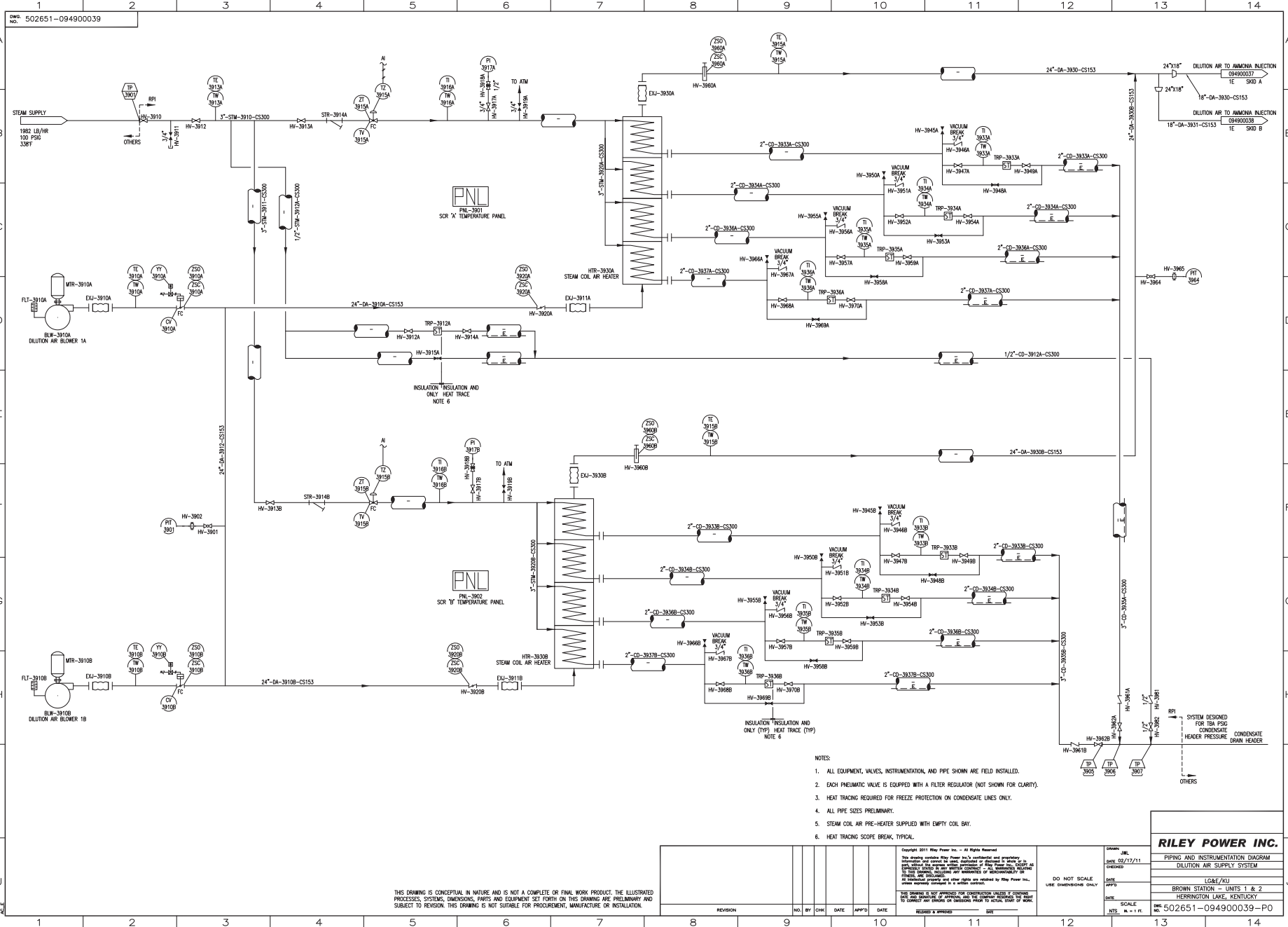
NOTE:

1. IF AMMONIA INJECTION SKIDS ARE IN CLOSE PROXIMITY TO EACH OTHER, ONLY ONE EMERGENCY SHOWER FACILITY IS REQUIRED.
2. NH3 VENTS ARE FIELD INSTALLED BY CONTRACTOR IN ACCORDANCE TO CGA CODE 2-2-26: 18A AND 18B AND 18.1.56. E.S. LOCATE ALL VENTS AT LEAST 10 FEET ABOVE WORKING PLATFORM WITHIN 40'.
3. INSTRUMENT AIR PROVIDED VIA SHD CONNECTION 39-2110.
4. EACH PNEUMATIC VALVE IS EQUIPPED WITH A FILTER REGULATOR (NOT SHOWN FOR CLARITY).
5. POTABLE WATER ISOLATION VALVE BY OTHERS.
6. ALL PIPE SIZES AND NUMBER OF LANCES PRELIMINARY.
7. ALLOW 4 DIAMETER UPSTREAM STRAIGHT PIPE RUN AND 1 DIAMETER STRAIGHT PIPE RUN DOWNSTREAM FROM FLOW ELEMENT.
8. ALL INSTRUMENTING AMMONIA PIPING BY OTHERS.
9. VALVE SIZINGS SHALL BE MADE DIRECTLY TO MFT RELAY CONTACTS.
10. MINIMIZE DISTANCE FROM THIS VALVE TO CORRESPONDING INJECTION VALVE.

THIS DRAWING IS CONCEPTUAL IN NATURE AND IS NOT A COMPLETE OR FINAL WORK PRODUCT. THE ILLUSTRATED PROCESSES, SYSTEMS, DIMENSIONS, PARTS AND EQUIPMENT SET FORTH ON THIS DRAWING ARE PRELIMINARY AND SUBJECT TO REVISION. THIS DRAWING IS NOT SUITABLE FOR PROCUREMENT, MANUFACTURE OR INSTALLATION.

REVISION				NO.	BY	CHK	DATE	APPRO.	DATE
<p>Copyright 2011 Riley Power Inc. - All Rights Reserved This drawing contains Riley Power Inc.'s confidential and proprietary information and shall not be used, disclosed or distributed in whole or in part without the written consent of Riley Power Inc. RIGOROUS SAFETY AND QUALITY STANDARDS ARE MAINTAINED THROUGHOUT THE ENTIRE PROJECT. ALL DIMENSIONS, PARTS AND EQUIPMENT SHALL BE AS SPECIFIED UNLESS OTHERWISE NOTED. ANY CHANGES TO THIS DRAWING SHALL BE APPROVED BY RILEY POWER INC. BEFORE CONSTRUCTION. THIS DRAWING IS NOT SUITABLE FOR PROCUREMENT, MANUFACTURE OR INSTALLATION.</p>									
<p>DO NOT SCALE USE DIMENSIONS ONLY</p>									
<p>DATE: 02/17/11 DRAWN BY: JML CHECKED BY: JML SCALE: AS SHOWN DATE: 02/17/11 DRAWN BY: JML CHECKED BY: JML</p>									

RILEY POWER INC.
 PIPING AND INSTRUMENTATION DIAGRAM
 AMMONIA INJECTION SYSTEM B
 LG&E/KU
 BROWN STATION - UNITS 1 & 2
 HERRINGTON LAKE, KENTUCKY
 DWG NO: 502651-094900038-PO



THIS DRAWING IS CONCEPTUAL IN NATURE AND IS NOT A COMPLETE OR FINAL WORK PRODUCT. THE ILLUSTRATED PROCESSES, SYSTEMS, DIMENSIONS, PARTS AND EQUIPMENT SET FORTH ON THIS DRAWING ARE PRELIMINARY AND SUBJECT TO REVISION. THIS DRAWING IS NOT SUITABLE FOR PROCUREMENT, MANUFACTURE OR INSTALLATION.

- NOTES:
1. ALL EQUIPMENT, VALVES, INSTRUMENTATION, AND PIPE SHOWN ARE FIELD INSTALLED.
 2. EACH PNEUMATIC VALVE IS EQUIPPED WITH A FILTER REGULATOR (NOT SHOWN FOR CLARITY).
 3. HEAT TRACING REQUIRED FOR FREEZE PROTECTION ON CONDENSATE LINES ONLY.
 4. ALL PIPE SIZES PRELIMINARY.
 5. STEAM COIL AIR PRE-HEATER SUPPLIED WITH EMPTY COIL BAY.
 6. HEAT TRACING SCOPE BREWM, TYPICAL.

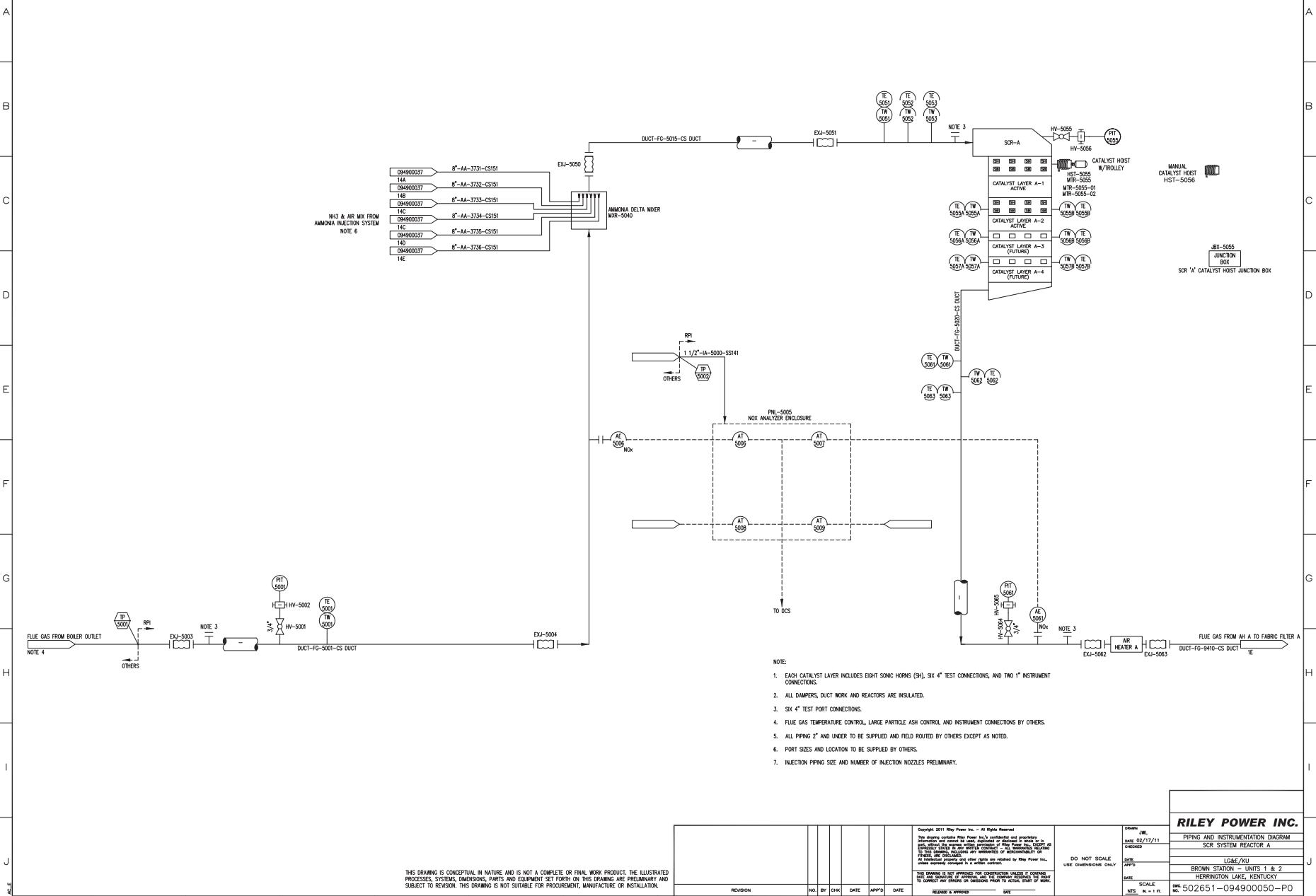
REVISION	NO.	BY	CHK	DATE	APPRO.	DATE

RILEY POWER INC.
 PIPING AND INSTRUMENTATION DIAGRAM
 DILUTION AIR SUPPLY SYSTEM
 LGE/KU
 BROWN STATION - UNITS 1 & 2
 HERRINGTON LAKE, KENTUCKY
 HW 502651-094900039-PO

Copyright 2011 Riley Power Inc. - All Rights Reserved
 This drawing is not approved for construction unless it contains the name, printed name and title of the person who has approved it for construction.

DATE: 02/17/11
 CHECKED: [Signature]
 APP'D: [Signature]
 SCALE: AS SHOWN
 DO NOT SCALE
 USE DIMENSIONS ONLY

DWG No. 502651-094900050

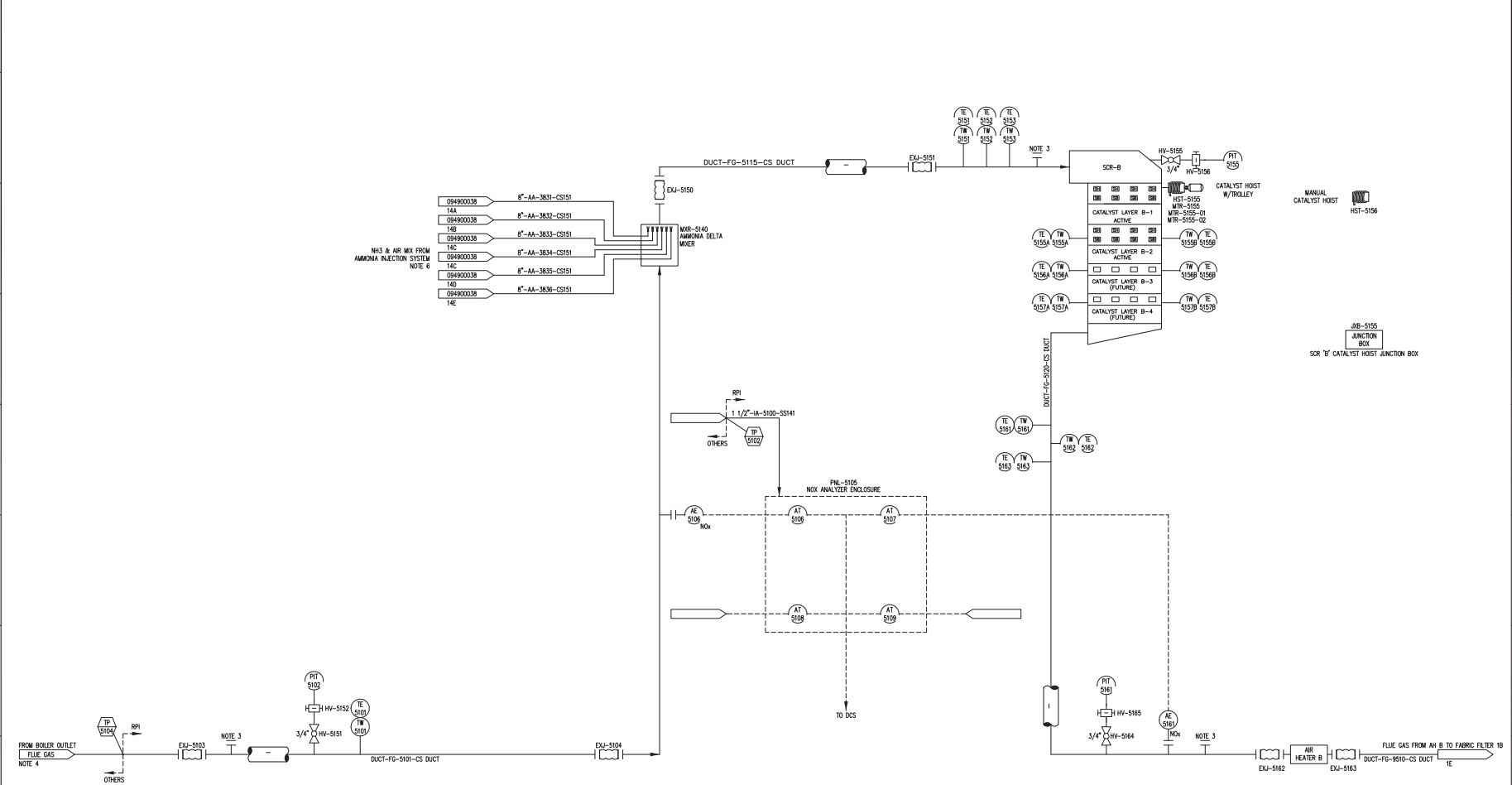


- NOTE:
1. EACH CATALYST LAYER INCLUDES EIGHT SONIC HORNS (SH), SIX 4" TEST CONNECTIONS, AND TWO 1" INSTRUMENT CONNECTIONS.
 2. ALL DAMPERS, DUCT WORK AND REACTORS ARE INSULATED.
 3. SIX 4" TEST PORT CONNECTIONS.
 4. FLUE GAS TEMPERATURE CONTROL, LARGE PARTICLE ASH CONTROL AND INSTRUMENT CONNECTIONS BY OTHERS.
 5. ALL PIPING 2" AND UNDER TO BE SUPPLIED AND FIELD ROUTED BY OTHERS EXCEPT AS NOTED.
 6. PORT SIZES AND LOCATION TO BE SUPPLIED BY OTHERS.
 7. INJECTION PIPING SIZE AND NUMBER OF INJECTION NOZZLES PRELIMINARY.

THIS DRAWING IS CONCEPTUAL IN NATURE AND IS NOT A COMPLETE OR FINAL WORK PRODUCT. THE ILLUSTRATED PROCESSES, SYSTEMS, DIMENSIONS, PARTS AND EQUIPMENT SET FORTH ON THIS DRAWING ARE PRELIMINARY AND SUBJECT TO REVISION. THIS DRAWING IS NOT SUITABLE FOR PROCUREMENT, MANUFACTURE OR INSTALLATION.

Copyright 2011 Riley Power Inc. - All Rights Reserved This drawing contains the Riley Power Inc. confidential information. This drawing and contents are the property of Riley Power Inc. and are not to be distributed or disclosed to third parties without the written permission of Riley Power Inc. NO PART OF THIS DRAWING, INCLUDING ANY DIMENSIONS OR DIMENSIONALITY OR OTHER INFORMATION, IS TO BE REPRODUCED OR TRANSMITTED IN ANY FORM OR BY ANY MEANS, ELECTRONIC OR MECHANICAL, INCLUDING PHOTOCOPYING, RECORDING, OR BY ANY INFORMATION STORAGE AND RETRIEVAL SYSTEM, WITHOUT THE WRITTEN PERMISSION OF RILEY POWER INC.		DRAWN: JBL DATE: 02/13/11 CHECKED: DATE: APP'D: DATE: SCALE: AS SHOWN NOTE: N/A = 1 ft.
REVISION NO. BY CHG. DATE APP'D. DATE		RILEY POWER INC. PIPING AND INSTRUMENTATION DIAGRAM SCR SYSTEM REACTOR A LG/E/KU BROWN STATION - UNITS 1 & 2 HERRINGTON LAKE, KENTUCKY DWG No. 502651-094900050-PO

DWG No. 502651-094900051



- NOTE:
1. EACH CATALYST LAYER INCLUDES EIGHT SONIC HORNS (SH), SIX 4" TEST CONNECTIONS, AND TWO 1" INSTRUMENT CONNECTIONS.
 2. ALL DAMPERS, DUCT WORK AND REACTORS ARE INSULATED.
 3. SIX 4" TEST PORT CONNECTIONS.
 4. FLUE GAS TEMPERATURE CONTROL, LARGE PARTICLE ASH CONTROL AND INSTRUMENT CONNECTIONS BY OTHERS.
 5. ALL PIPING 2" AND UNDER TO BE SUPPLIED AND FIELD ROUTED BY OTHERS EXCEPT AS NOTED.
 6. INJECTION PIPING SIZE AND NUMBER OF INJECTION NOZZLES PRELIMINARY.

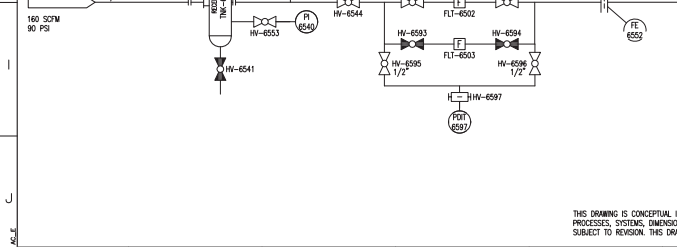
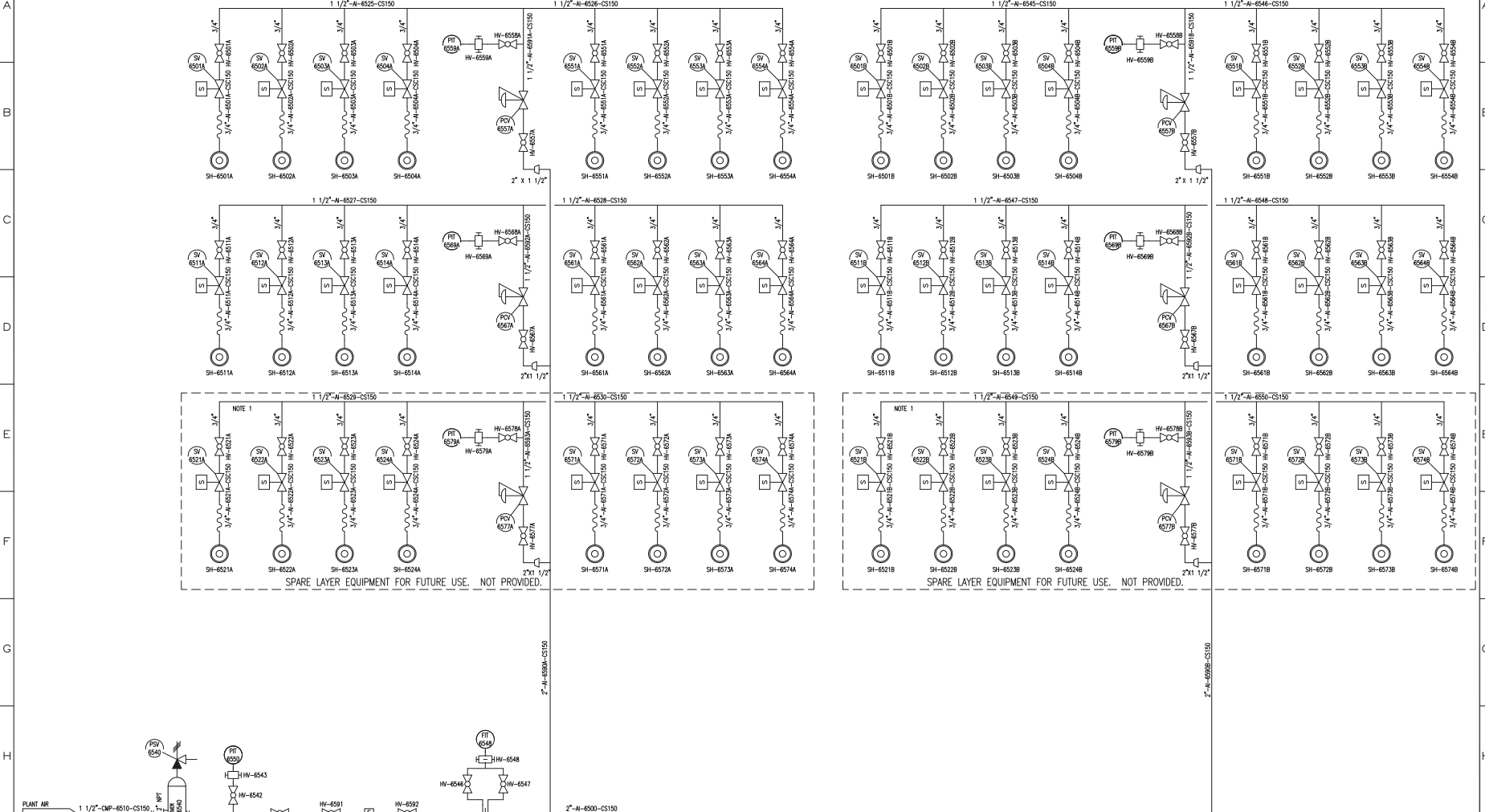
THIS DRAWING IS CONCEPTUAL IN NATURE AND IS NOT A COMPLETE OR FINAL WORK PRODUCT. THE ILLUSTRATED PROCESSES, SYSTEMS, DIMENSIONS, PARTS AND EQUIPMENT SET FORTH ON THIS DRAWING ARE PRELIMINARY AND SUBJECT TO REVISION. THIS DRAWING IS NOT SUITABLE FOR PROCUREMENT, MANUFACTURE OR INSTALLATION.

Copyright 2011 Ryle Power Inc. - All Rights Reserved This drawing is the property of Ryle Power Inc. and is not to be reproduced, stored in a retrieval system, or transmitted in any form or by any means, electronic, mechanical, photocopying, recording, or by any information storage and retrieval system, without the prior written permission of Ryle Power Inc.				DRAWN: JBL DATE: 02/17/11 CHECKED:	
THIS DRAWING IS NOT PROVIDED FOR CONSTRUCTION UNLESS IT CONTAINS AN UNLESS OTHERWISE SPECIFIED TO THE CONTRARY.				DO NOT SCALE USE DIMENSIONS ONLY	
REVISIONS:				DATE: LG/E/KU APP'D: BROWN STATION - UNITS 1 & 2 HERRINGTON LAKE, KENTUCKY	
SCALE:				DWG No. 502651-094900051-PO	

DRW NO: 502651-094900065

SCR A

SCR B



- NOTES:
1. CAPPED CONNECTORS PROVIDED FOR FUTURE SONIC HORNS.
 2. ALL PIPING 2" AND UNDER SHALL BE SUPPLIED AND FIELD ROUTED BY OTHERS EXCEPT AS NOTED.
 3. ALL COMPRESSED AIR PIPING SHALL BE DESIGNED AND PROCURED BY OTHERS.

THIS DRAWING IS CONCEPTUAL IN NATURE AND IS NOT A COMPLETE OR FINAL WORK PRODUCT. THE ILLUSTRATED PROCESSES, SYSTEMS, DIMENSIONS, PARTS AND EQUIPMENT SET FORTH ON THIS DRAWING ARE PRELIMINARY AND SUBJECT TO REVISION. THIS DRAWING IS NOT SUITABLE FOR PROCUREMENT, MANUFACTURE OR INSTALLATION.

REVISION	NO.	BY	CHK.	DATE	APPRO.	DATE

Copyright 2011 Riley Power Inc. - All Rights Reserved
 This drawing was prepared by Riley Power Inc. for the customer's use only. It is not to be used for any other purpose without the written consent of Riley Power Inc. All rights reserved. No part of this drawing may be reproduced or transmitted in any form or by any means, electronic or mechanical, including photocopying, recording, or by any information storage and retrieval system, without the prior written permission of Riley Power Inc. This drawing is not intended for construction unless it contains the word "CONSTRUCTION" in the title block. If the word "CONSTRUCTION" is not present, this drawing is for informational purposes only.

DO NOT SCALE
 USE DIMENSIONS ONLY

DATE: 02/17/11
 DRAWN BY: JML
 CHECKED BY: JML
 APP'D BY: JML
 SCALE: N/A = 1" = 1'-0"
 NTE: N/A = 1" = 1'-0"

RILEY POWER INC.
 PIPING AND INSTRUMENTATION DIAGRAM
 SONIC HORN SYSTEM
 LG&E/KU
 BROWN STATION - UNITS 1 & 2
 HERRINGTON LAKE, KENTUCKY
 NO: 502651-094900065-PO