

ID	FACILITY	REMARKS
(A)	UNIT 1 BOILER	
(B)	UNIT 2 BOILER	
(C)	UNIT 1 COLD-SIDE ELECTROSTATIC PRECIPITATOR	
(D)	UNIT 2 HOT-SIDE ELECTROSTATIC PRECIPITATOR	
(E)	UNIT 1 WET FGD	
(F)	UNIT 2 WET FGD	
(G)	UNIT 1 ID FANS	
(H)	UNIT 2 ID FANS	
(J)	UNIT 1 & 2 COMMON CHIMNEY	ABANDONED
(K)	ADMINISTRATION BUILDING	
(L)	UNIT 1 CHIMNEY	
(M)	UNIT 2 COOLING TOWER	
(N)	UNIT 1 & 2 RESERVE AUX TRANSFORMER	
(P)	UNIT 1 FGD PUMP BUILDING	
(Q)	UNIT 2 FGD PUMP BUILDING	
(R)	UNIT 1 & 2 COAL CONVEYOR	
(S)	UNIT 3 & 4 COAL CONVEYOR	
(T)	UNIT 1 UNIT AUX TRANSFORMER	
(U)	UNIT 2 UNIT AUX TRANSFORMER	
(V)	UNIT 1 MAIN TRANSFORMER	
(W)	UNIT 2 MAIN TRANSFORMER	
(X)	UNIT 1 SCR	
(Y)	SKYWALK AND GROUND LEVEL CROSSOVER	SKYWALK TO BE REROUTED
(Z)	ELECTRICAL BUILDING	
(AA)	UNIT 1 SORBENT SILO	
(BB)	UNIT 1/UNIT 2 COMMON FLY ASH BUILDING	

ID	FACILITY	REMARKS
(1)	UNIT 1 PULSE JET FABRIC FILTERS (PJFF)	
(2)	UNIT 2 PULSE JET FABRIC FILTERS (PJFF)	
(3)	UNIT 1 PJFF ELECTRICAL BUILDING	BENEATH PJFF
(4)	UNIT 2 PJFF ELECTRICAL BUILDING	BENEATH PJFF
(5)	UNIT 2 SCR	
(6)	UNIT 1 BOOSTER FAN	
(7)	UNIT 2 BOOSTER FAN	
(8)	UNIT 1 PAC SILO AND TRANSFER EQUIPMENT	
(9)	AMMONIA INJECTION SKID	
(10)	POWER DISTRIBUTION CENTER	
(11)	BYPASS DUCT	TEMPORARY
(12)	UNIT 2 PAC SILO AND TRANSFER EQUIPMENT	
(13)	UNIT 2 SORBENT SILO AND TRANSFER EQUIPMENT	
(14)	COMMON AGC RESERVE AUX TRANSFORMER	
(15)	COMMON AGC RESERVE AUX TRANSFORMER	
(16)	UNIT 1 AGC UNIT AUX TRANSFORMER	
(17)	UNIT 2 AGC UNIT AUX TRANSFORMER	
(18)	UNIT 1 FAN VARIABLE FREQUENCY DRIVE ENCLOSURE	BENEATH PJFF
(19)	UNIT 2 FAN VARIABLE FREQUENCY DRIVE ENCLOSURE	BENEATH PJFF
(20)	EXHAUST DUCT	

- NOTES:
- SCALE IS APPROXIMATE. EXISTING SITE WAS TRACED FROM KU DRAWING GHQ-M-06118, REV B.
 - UNIT 2 SCR CONSTRUCTION WILL BE COMPLETED PRIOR TO UNIT 1 CONSTRUCTION.
 - BYPASS DUCTWORK (ITEM 11) WILL BE INSTALLED TO ISOLATE DUCTWORK TO THE NORTH. THAT DUCTWORK WILL BE DEMOLISHED TO MAKE ROOM FOR NEW CONSTRUCTION. BYPASS DUCT WILL BE ABANDONED OR REMOVED WHEN FABRIC FILTERS ARE PLACED INTO OPERATION.
 - SIZE OF FABRIC FILTERS AND ASSOCIATED EQUIPMENT TO BE CONFIRMED DURING DETAILED DESIGN.

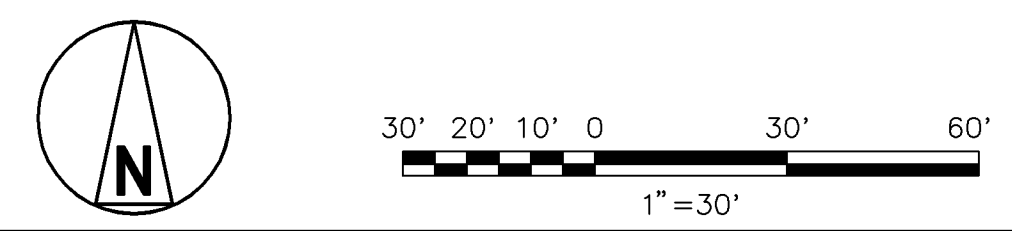
FOR CONTINUATION SEE SHEET 168908-GCDS-1002

NOT TO BE USED FOR CONSTRUCTION

THE DISTRIBUTION AND USE OF THE NATIVE FORMAT CAD FILE OF THIS DRAWING IS UNCONTROLLED. THE USER SHALL VERIFY TRACABILITY OF THIS DRAWING TO THE LATEST CONTROLLED VERSION.

168908-1001
 04/26/11 10:39:00
 E1
 (LMS Tech)

NO	DATE	REVISIONS AND RECORD OF ISSUE	DRN	DES	CHK	PDE	APP
B	01/MAR/11	ISSUED FOR CLIENT REVIEW	JWS	MEH			MEH
A	16/FEB/11	ISSUED FOR IN-HOUSE REVIEW	PRP	MEH			MEH



BLACK & VEATCH CORPORATION

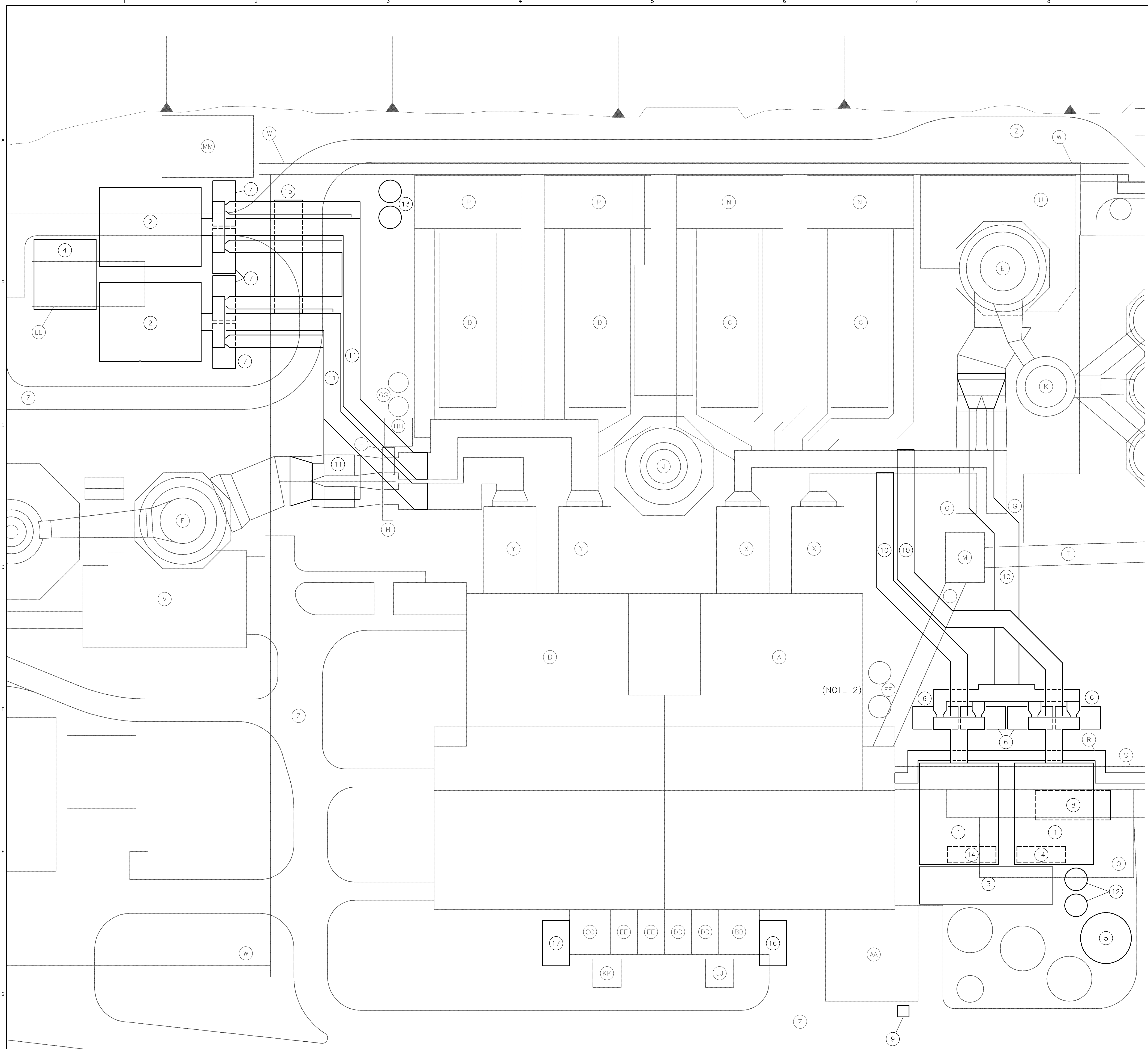
DRAWN: HWB
 CHECKED: DATE

LG&E/KU - GHENT STATION
PHASE II: AIR QUALITY CONTROL STUDY

PROJECT: 168908-GCDS-1001
 DRAWING NUMBER: 168908-GCDS-1001
 REV: B

SITE ARRANGEMENT
UNIT 1 AND UNIT 2

CODE: AREA:



EXISTING FACILITIES LEGEND		
ID	FACILITY	REMARKS
(A)	UNIT 3 BOILER	
(B)	UNIT 4 BOILER	
(C)	UNIT 3 HOT-SIDE ELECTROSTATIC PRECIPITATORS	
(D)	UNIT 4 HOT-SIDE ELECTROSTATIC PRECIPITATORS	
(E)	UNIT 3 WET FGD	
(F)	UNIT 4 WET FGD	
(G)	UNIT 3 ID FANS	TO BE BYPASSED
(H)	UNIT 4 ID FANS	TO BE BYPASSED
(J)	UNIT 3 & 4 COMMON CHIMNEY	ABANDONED
(K)	UNIT 2 & 3 COMMON CHIMNEY	
(L)	UNIT 4 CHIMNEY	
(M)	COAL TRANSFER TOWER	
(N)	UNIT 3 SCR	
(P)	UNIT 4 SCR	
(R)	MAINTENANCE SHOP BUILDING	TO BE DEMOLISHED & RELOCATED
(S)	SKYWALK	TO BE REROUTED AS SHOWN
(T)	CROSSOVER AND GROUND LEVEL UTILITY CORRIDOR	
(U)	UNIT 3 & 4 COAL CONVEYOR	
(V)	UNIT 3 FGD PUMP BUILDING	
(W)	UNIT 4 FGD PUMP BUILDING	
(X)	PIPERACK	
(Y)	UNIT 3 AIR HEATER	
(Z)	UNIT 4 AIR HEATER	
(AA)	PLANT ROADS	
(BB)	WATER TREATING AND SERVICE BUILDING	
(CC)	UNIT 3 MAIN TRANSFORMER	
(DD)	UNIT 4 MAIN TRANSFORMER	
(EE)	UNIT 3 UNIT AUX TRANSFORMER	
(FF)	UNIT 4 UNIT AUX TRANSFORMER	
(GG)	UNIT 3 SORBENT SILOS	SEE NOTE 2
(HH)	UNIT 4 SORBENT SILOS	
(JJ)	SEWAGE TREATMENT STATION	
(KK)	UNIT 3 FGD AUX TRANSFORMER	
(LL)	UNIT 4 FGD AUX TRANSFORMER	
(MM)	WAREHOUSE	TO BE RELOCATED
(NN)	UNIT 3/UNIT 4 COMMON FLY ASH HANDLING BUILDING	

NEW FACILITIES LEGEND		
ID	FACILITY	REMARKS
(1)	UNIT 3 PULSE JET FABRIC FILTER (PJFF)	
(2)	UNIT 4 PULSE JET FABRIC FILTER (PJFF)	
(3)	UNIT 3 PJFF ELECTRICAL BUILDING	
(4)	UNIT 4 PJFF ELECTRICAL BUILDING	
(5)	BOILER CLEANING FRAC TANK	
(6)	UNIT 3 ID FANS	
(7)	UNIT 4 ID FANS	
(8)	UNIT 3 FLY ASH TRANSFER STATION	BENEATH PJFF
(9)	REMOTE SORBENT UNLOADING STATION	SEE NOTE 2
(10)	UNIT 3 EXHAUST DUCTWORK	
(11)	UNIT 4 EXHAUST DUCTWORK	
(12)	UNIT 3 PAC SILO AND TRANSFER EQUIPMENT	
(13)	UNIT 4 PAC SILO AND TRANSFER EQUIPMENT	
(14)	UNIT 3 FAN VARIABLE FREQUENCY DRIVE ENCLOSURE	BENEATH PJFF
(15)	UNIT 4 FAN VARIABLE FREQUENCY DRIVE ENCLOSURE	
(16)	UNIT 3 AQC UNIT AUX TRANSFORMER	
(17)	UNIT 4 AQC UNIT AUX TRANSFORMER	

- NOTES:
- SCALE IS APPROXIMATE. EXISTING SITE WAS TRACED FROM KU DRAWING GHO-M-06118, REV. B.
 - EXISTING UNIT 3 SORBENT SILOS AND FORWARDING EQUIPMENT (ITEM FF) WILL BE RELOCATED TO BE ACCESSIBLE BY TRUCK OR REMOTE TRUCK UNLOADING WILL BE PROVIDED (ITEM 9).
 - SIZE OF FABRIC FILTERS AND ASSOCIATED EQUIPMENT TO BE CONFIRMED DURING DETAILED DESIGN.

FOR CONTINUATION SEE SHEET 168908-GCDS-1001

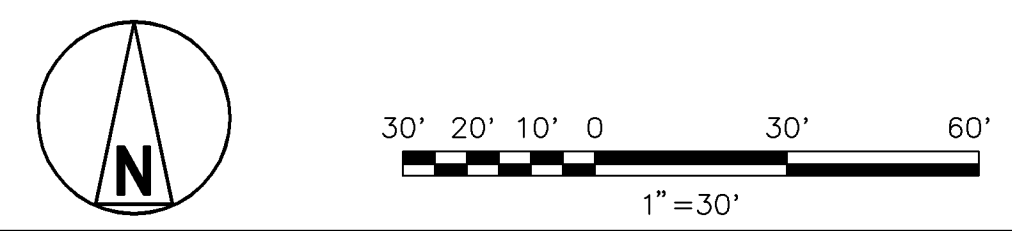
(NOTE 2)

NOT TO BE USED FOR CONSTRUCTION

THE DISTRIBUTION AND USE OF THE NATIVE FORMAT CAD FILE OF THIS DRAWING IS UNCONTROLLED. THE USER SHALL VERIFY TRACABILITY OF THIS DRAWING TO THE LATEST CONTROLLED VERSION.

168908-1001
 04/04/11 10:38:46
 E1
 168908-1001

NO	DATE	REVISIONS AND RECORD OF ISSUE	DRN	DES	CHK	PDE	APP
B	01/MAR/11	ISSUED FOR CLIENT REVIEW	JWS	MEH			
A	16/FEB/11	ISSUED FOR IN-HOUSE REVIEW	PRF	MEH			



BLACK & VEATCH CORPORATION

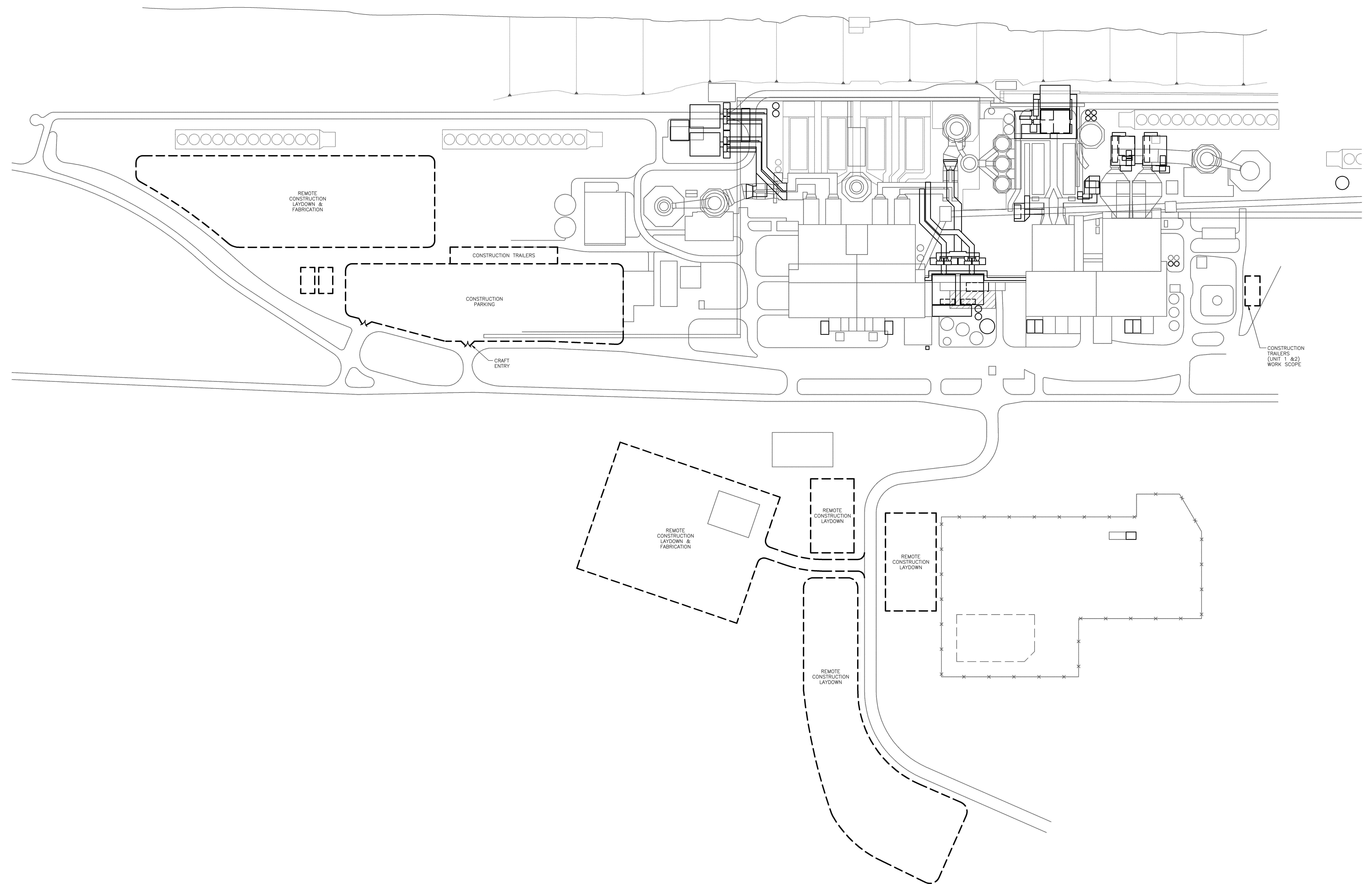
DRAWN: HWB
 CHECKED: DATE

LG&E/KU - GHENT STATION
 PHASE II: AIR QUALITY CONTROL STUDY

PROJECT: 168908-GCDS-1002
 DRAWING NUMBER: B

SITE ARRANGEMENT
 UNIT 3 AND UNIT 4

- NOTES:
- SCALE IS APPROXIMATE. EXISTING SITE WAS TRACED FROM KU DRAWING CHO-M-06118, REV. B.
 - REFER TO SITE ARRANGEMENT DRAWINGS 168908-GCDS-1001 AND 168908-GCDS-1002 AND SITE PLOT PLAN GCDS-1000 FOR ADDITIONAL DETAIL.

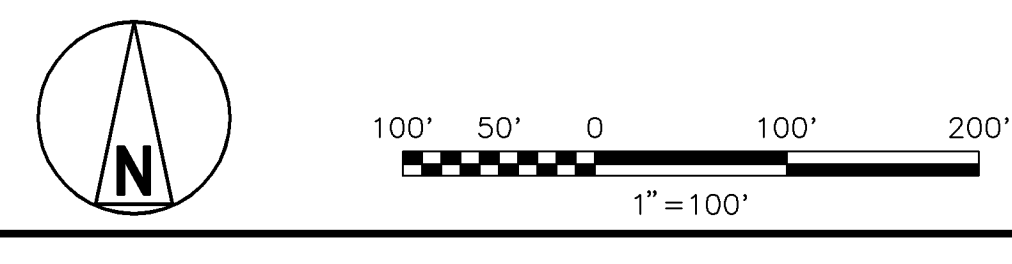


NOT TO BE USED FOR CONSTRUCTION

THE DISTRIBUTION AND USE OF THE NATIVE FORMAT CAD FILE OF THIS DRAWING IS UNCONTROLLED. THE USER SHALL VERIFY TRACEABILITY OF THIS DRAWING TO THE LATEST CONTROLLED VERSION.

A300 16.1b (LMS Tech)
 04/26/11 10:21:15

NO	DATE	REVISIONS AND RECORD OF ISSUE	DRN	DES	CHK	PDE	APP
B	01/MAR/11	ISSUED FOR CLIENT REVIEW	JWS	MEH			MEH
A	23/FEB/11	ISSUED FOR IN-HOUSE REVIEW	PRP	MEH			MEH



BLACK & VEATCH CORPORATION

DRAWN: HWB
 CHECKED: DATE

LG&E/KU - GHENT STATION PHASE II: AIR QUALITY CONTROL STUDY		PROJECT 168908-GCDS-1003	DRAWING NUMBER 168908-GCDS-1003	REV B
CONSTRUCTION FACILITIES PLOT PLAN		CODE	AREA	