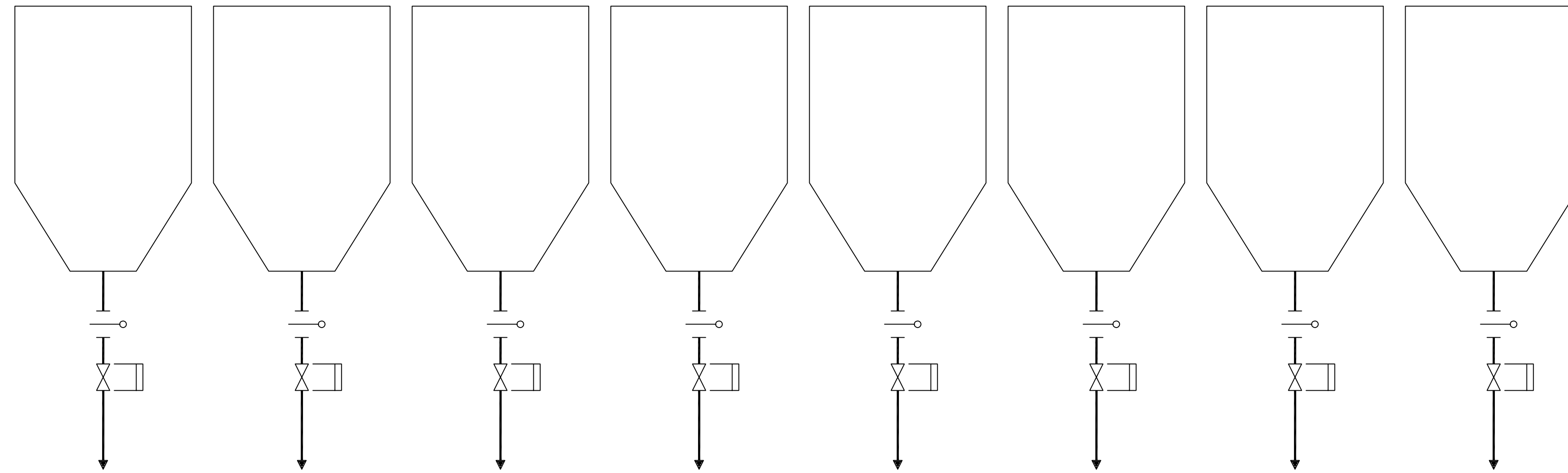


NOTES:

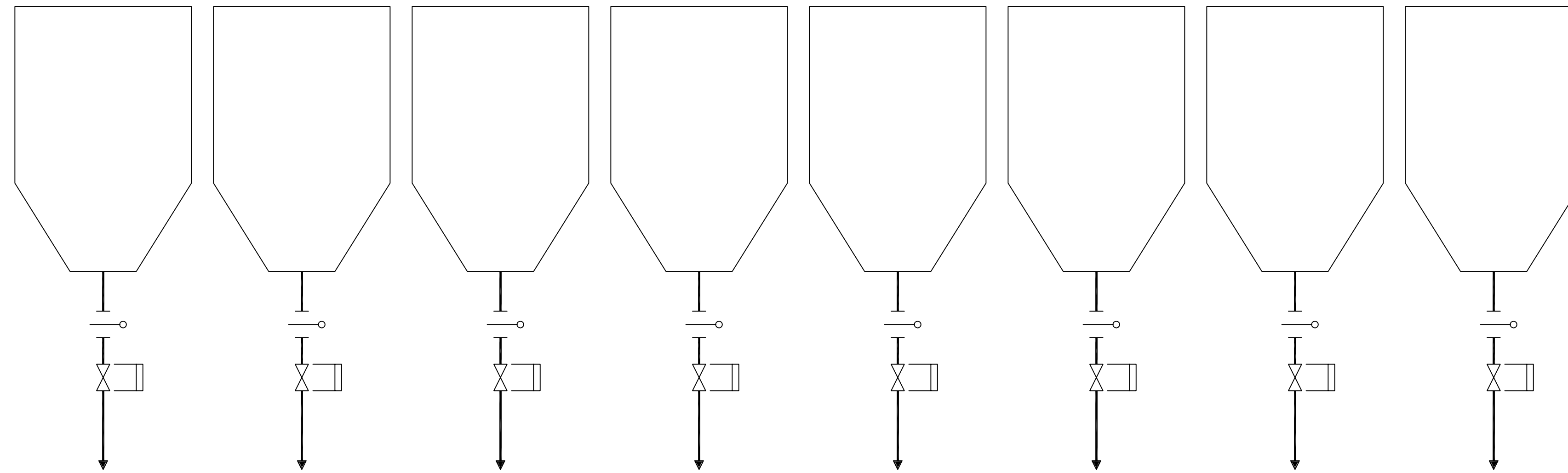
1. NUMBER OF HOPPERS TO BE CONFIRMED DURING DETAILED DESIGN.
2. SIZE AND QUANTITY OF ADDITIONAL EQUIPMENT REQUIRED TO BE DETERMINED DURING DETAILED DESIGN.

PULSE-JET  
FABRIC FILTER  
ASH HOPPERS



TO EXISTING  
ASH SYSTEM  
(NOTE 1)

PULSE-JET  
FABRIC FILTER  
ASH HOPPERS



TO EXISTING  
ASH SYSTEM  
(NOTE 1)

**NOT TO BE USED  
FOR CONSTRUCTION**

THE DISTRIBUTION AND USE OF THE NATIVE  
FORMAT CAD FILE OF THIS DRAWING IS  
UNCONTROLLED. THE USER SHALL VERIFY  
TRACEABILITY OF THIS DRAWING TO THE LATEST  
CONTROLLED VERSION.

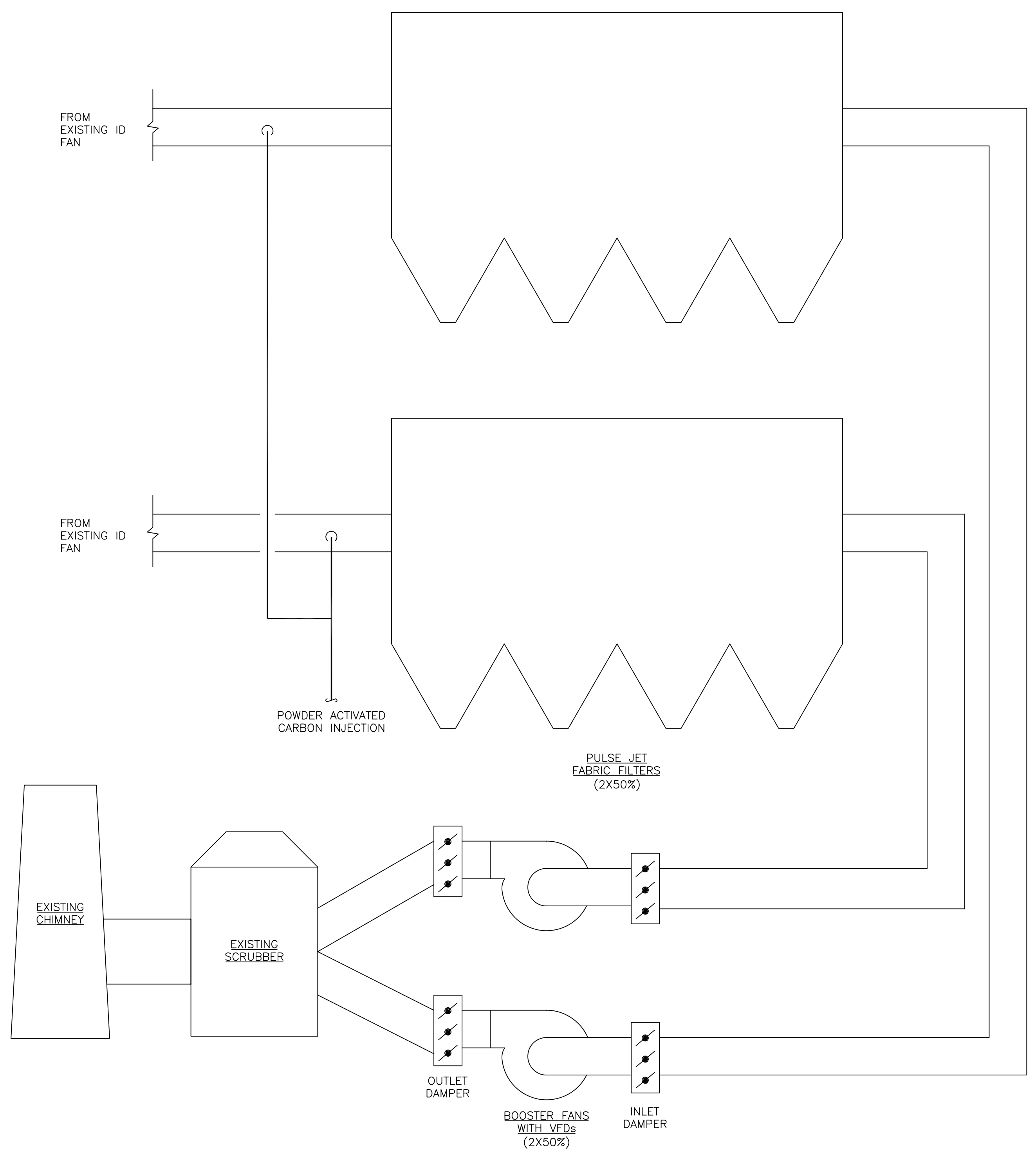
PR03292 D1 ACAD 16.1s (LWS Tech)  
 02/21/11 14:40:03

NO	DATE	REVISIONS AND RECORD OF ISSUE	DRN	DES	CHK	PDE	APP
B	21/FEB/11	ISSUED FOR CLIENT REVIEW	PRP	SAT	MRW		
A	04/FEB/11	ISSUED FOR IN HOUSE REVIEW	HWB	NCM	MRW		

<b>BLACK &amp; VEATCH</b> CORPORATION	
DRAWN	HWB
CHECKED	DATE

<b>LG&amp;E/KU – GHENT STATION</b> PHASE 1I: AIR QUALITY CONTROL STUDY	
UNIT 1 PROCESS FLOW DIAGRAM FLY ASH HANDLING	

PROJECT	DRAWING NUMBER	REV
	168908-G1ASB-M2022	B
CODE		
AREA		



**NOT TO BE USED FOR CONSTRUCTION**  
 THE DISTRIBUTION AND USE OF THE NATIVE FORMAT CAD FILE OF THIS DRAWING IS UNCONTROLLED. THE USER SHALL VERIFY TRACEABILITY OF THIS DRAWING TO THE LATEST CONTROLLED VERSION.

PR03292  
 02/21/11 14:40:22  
 ACAD 16.1s (LWS Tech)  
 D1  
 02/21/11 14:40:22

NO	DATE	REVISIONS AND RECORD OF ISSUE	DRN	DES	CHK	PDE	APP
B	21/FEB/11	ISSUED FOR CLIENT REVIEW	PRP	SAT	MRW		
A	04/FEB/11	ISSUED FOR IN HOUSE REVIEW	HWB	NCM	MRW		

**BLACK & VEATCH CORPORATION**

CHECKED: \_\_\_\_\_ DATE: \_\_\_\_\_

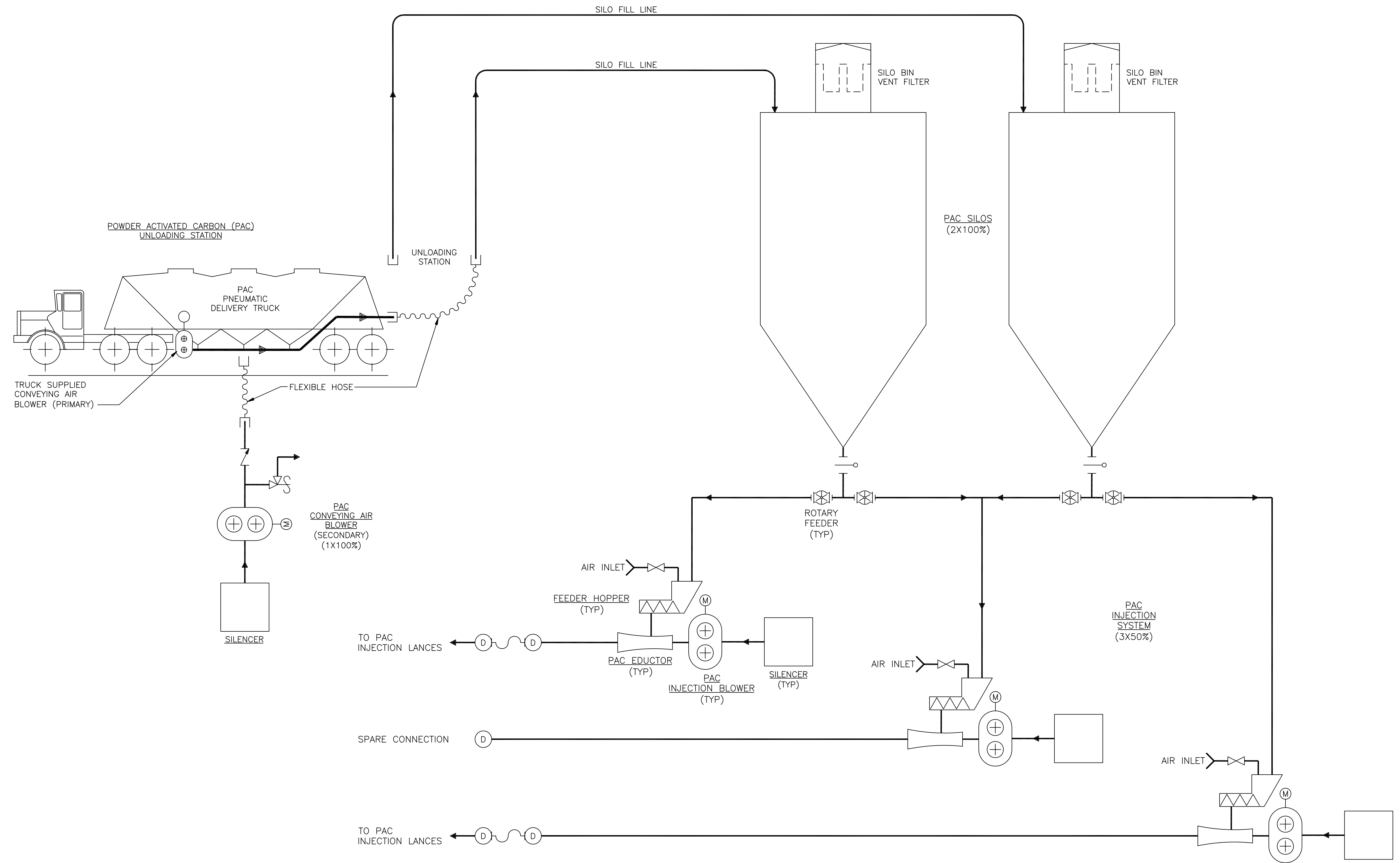
DRAWN: HWB

**LG&E/KU - GHENT STATION**  
 PHASE 1I: AIR QUALITY CONTROL STUDY

**UNIT 1 PROCESS FLOW DIAGRAM**  
 INDUCED DRAFT

PROJECT	DRAWING NUMBER	REV
168908-G1CCE-M2145		B
CODE	AREA	

A  
B  
C  
D  
E  
F



**NOT TO BE USED FOR CONSTRUCTION**  
 THE DISTRIBUTION AND USE OF THE NATIVE FORMAT CAD FILE OF THIS DRAWING IS UNCONTROLLED. THE USER SHALL VERIFY TRACEABILITY OF THIS DRAWING TO THE LATEST CONTROLLED VERSION.

PR03292 ACAD 16.1s (LWS Tech)  
 02/21/11 14:40:39

NO	DATE	REVISIONS AND RECORD OF ISSUE	DRN	DES	CHK	PDE	APP
B	21/FEB/11	ISSUED FOR CLIENT REVIEW	PRP	SAT	MRW		
A	04/FEB/11	ISSUED FOR IN HOUSE REVIEW	HWB	NCM	MRW		

**BLACK & VEATCH CORPORATION**

CHECKED: \_\_\_\_\_ DATE: \_\_\_\_\_

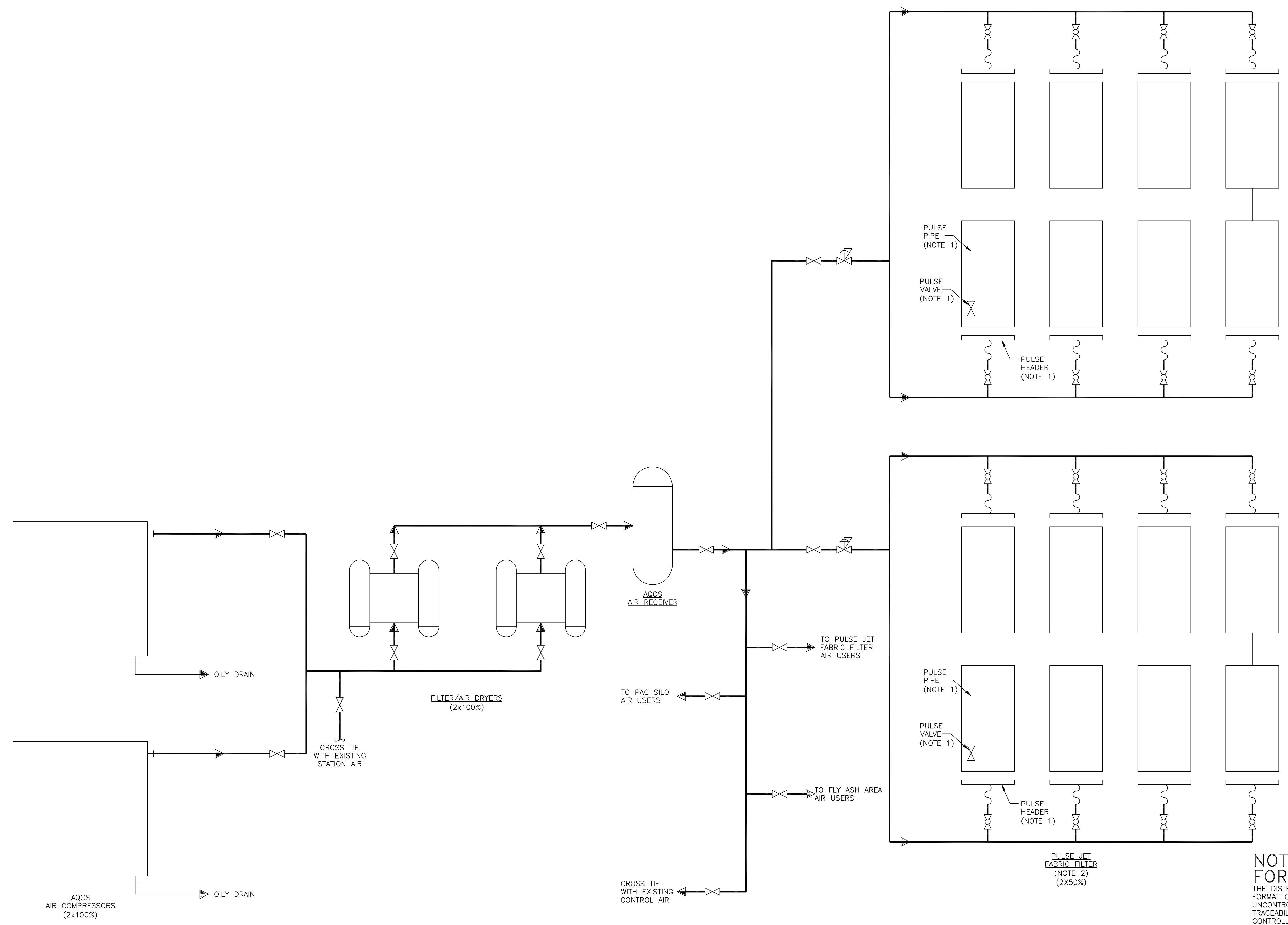
DRAWN: HWB

**LG&E/KU - GHENT STATION**  
 PHASE 1I: AIR QUALITY CONTROL STUDY

UNIT 1 PROCESS FLOW DIAGRAM  
 POWDER ACTIVATED CARBON INJECTION

PROJECT	DRAWING NUMBER	REV
168908-G1CCH-M2148A		B
CODE	AREA	

- NOTES:**
1. EACH COMPARTMENT WILL HAVE MORE THAN ONE PULSE HEADER AND MULTIPLE PULSE VALVES AND PULSE PIPES. ONE SET IS SHOWN FOR CLARITY.
  2. NUMBER OF COMPARTMENTS TO BE CONFIRMED DURING DETAILED DESIGN.



**NOT TO BE USED FOR CONSTRUCTION**  
 THE DISTRIBUTION AND USE OF THE NATIVE FORMAT CAD FILE OF THIS DRAWING IS UNCONTROLLED. THE USER SHALL VERIFY TRACEABILITY OF THIS DRAWING TO THE LATEST CONTROLLED VERSION.

PR03292  
 A:\SLO\15  
 04/04/11 11:21:27  
 ACAD 16.1s (LWS Tech)

NO	DATE	REVISIONS AND RECORD OF ISSUE	DRN	DES	CHK	PDE	APP
B	21/FEB/11	ISSUED FOR CLIENT REVIEW	PRP	SAT	MRW		
A	04/FEB/11	ISSUED FOR IN HOUSE REVIEW	HWB	NCM	MRW		

**BLACK & VEATCH CORPORATION**

DRAWN: HWB  
 CHECKED: \_\_\_\_\_  
 DATE: \_\_\_\_\_

**LG&E/KU - GHENT STATION**  
**PHASE 1I: AIR QUALITY CONTROL STUDY**

UNIT 1 PROCESS FLOW DIAGRAM  
 AQCS COMPRESSED AIR

PROJECT	DRAWING NUMBER	REV
168908-G1CAB-M2182		B
CODE		
AREA		